

Data File : BM018136.D
 Acq On : 13 Dec 2018 19:30
 Operator : JU/SJ
 Sample : J6271-08
 Misc :
 ALS Vial : 5 Sample Multiplier: 1

Instrument :
 BNA_M
 ClientSampleId :
 F9F15

Quant Time: Dec 14 01:55:36 2018
 Quant Method : Z:\SVOASRV\HPCHEM1\BNA_M\METHODS\SOM-EPA-BM121318MA.M
 Quant Title : SVOA CALIBRATION
 QLast Update : Fri Dec 14 01:52:41 2018
 Response via : Initial Calibration

Internal Standards	R.T.	QIon	Response	Conc	Units	Dev(Min)
1) 1,4-Dichlorobenzene-d4	7.51	152	118460	20.00	ng/ul	0.00
18) Naphthalene-d8	10.27	136	542589	20.00	ng/ul	0.00
35) Acenaphthene-d10	14.17	164	330484	20.00	ng/ul	0.00
61) Phenanthrene-d10	16.93	188	767287	20.00	ng/ul	0.00
77) Chrysene-d12	21.15	240	892818	20.00	ng/ul	0.00
85) Perylene-d12	23.31	264	993331	20.00	ng/ul	0.00

System Monitoring Compounds

3) 1,4-Dioxane-d8	3.10	96	16949	6.83	ng/uL	0.00
5) Phenol-d5	6.70	99	333919	29.33	ng/ul	0.00
7) Bis-(2-Chloroethyl)ether-d	6.86	67	199872	32.74	ng/ul	0.00
9) 2-Chlorophenol-d4	7.05	132	283271	31.47	ng/ul	0.00
13) 4-Methylphenol-d8	8.23	113	290521	31.46	ng/ul	0.00
19) Nitrobenzene-d5	8.67	128	151549	34.00	ng/ul	0.00
22) 2-Nitrophenol-d4	9.38	143	176179	33.39	ng/ul	0.00
26) 2,4-Dichlorophenol-d3	9.91	165	287232	31.50	ng/ul	0.00
29) 4-Chloroaniline-d4	10.43	131	381140	47.29	ng/ul	0.00
43) Dimethylphthalate-d6	13.59	166	1020844	34.92	ng/ul	0.00
46) Acenaphthylene-d8	13.86	160	1263574	35.47	ng/ul	0.00
51) 4-Nitrophenol-d4	14.41	143	164856	31.25	ng/ul	0.00
57) Fluorene-d10	15.17	176	900760	37.09	ng/ul	0.00
62) 4,6-Dinitro-2-methylphenol	15.32	200	175811	30.07	ng/ul	0.00
70) Anthracene-d10	17.03	188	1402756	36.18	ng/ul	0.00
78) Pyrene-d10	19.34	212	1630249	38.08	ng/ul	0.00
89) Benzo(a)pyrene-d12	23.18	264	1958725	35.60	ng/ul	0.00

Target Compounds

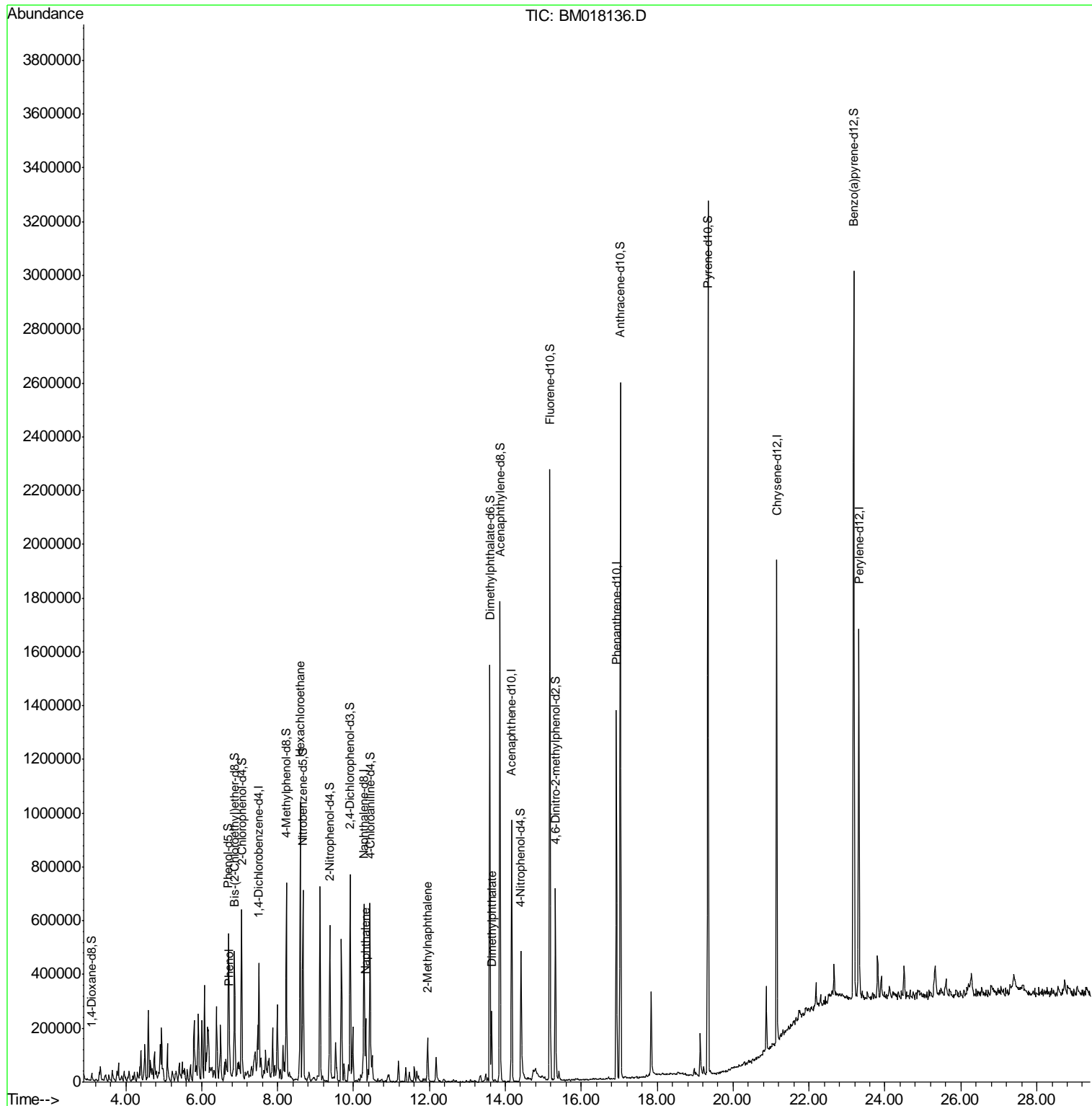
					Qvalue
6) Phenol	6.73	94	47789	4.269	ng/ul 92
17) Hexachloroethane	8.60	117	75275	21.419	ng/ul# 6
28) Naphthalene	10.33	128	86276	2.955	ng/ul# 95
34) 2-Methylnaphthalene	11.96	142	90402	4.174	ng/ul 93
44) Dimethylphthalate	13.64	163	164773	5.920	ng/ul 97

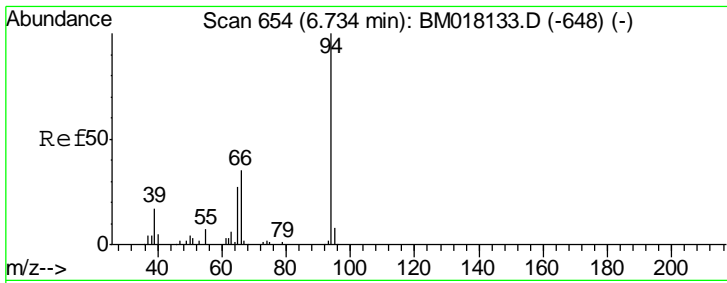
(#) = qualifier out of range (m) = manual integration (+) = signals summed

Data File : BM018136.D
Acq On : 13 Dec 2018 19:30
Operator : JU/SJ
Sample : J6271-08
Misc :
ALS Vial : 5 Sample Multiplier: 1

Instrument :
BNA_M
ClientSampleId :
F9F15

Quant Time: Dec 14 01:55:36 2018
Quant Method : Z:\SVOASRV\HPCHEM1\BNA_M\METHODS\SOM-EPA-BM121318MA.M
Quant Title : SVOA CALIBRATION
QLast Update : Fri Dec 14 01:52:41 2018
Response via : Initial Calibration

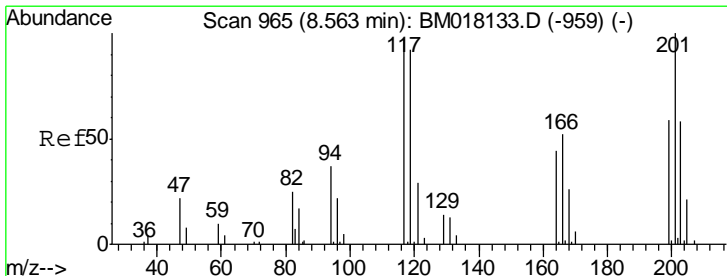
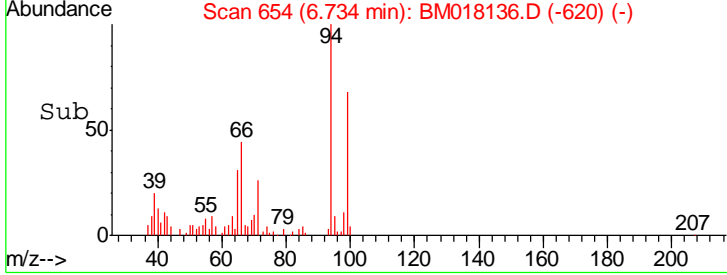
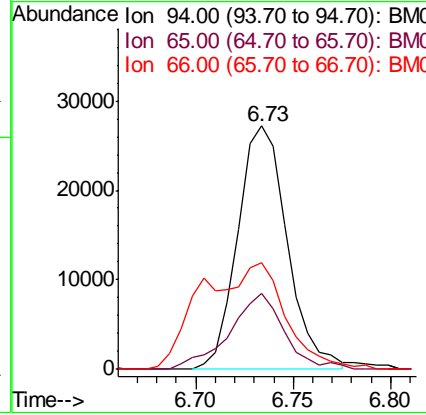
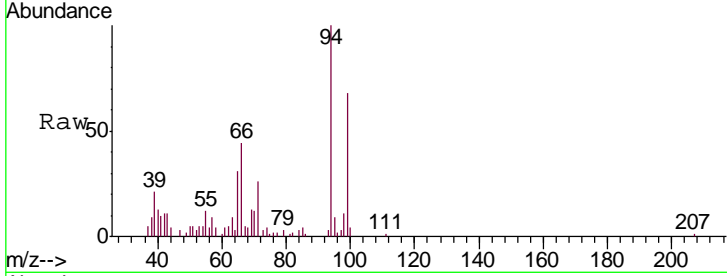




#6
 Phenol
 Concen: 4.269 ng/ul
 RT: 6.73 min Scan# 654
 Delta R.T. 0.00 min
 Lab File: BM018136.D
 Acq: 13 Dec 2018 19:30

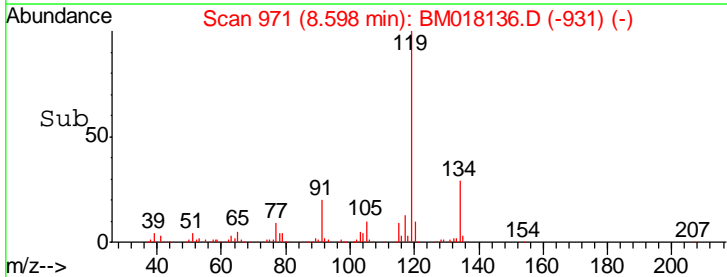
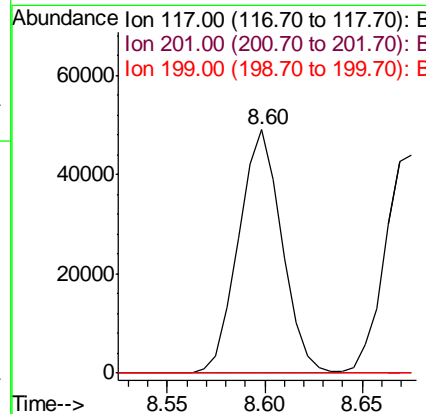
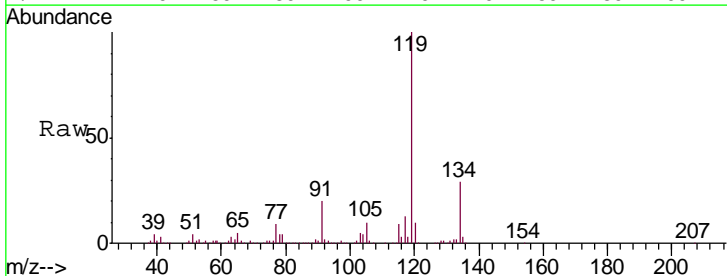
Instrument :
 BNA_M
 ClientSampled :
 F9F15

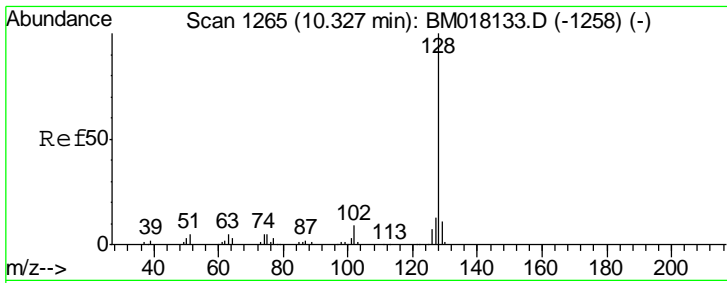
Tgt Ion	Resp	Lower	Upper
94	47789		
65	31.2	22.0	33.0
66	43.6	30.3	45.5



#17
 Hexachloroethane
 Concen: 21.419 ng/ul
 RT: 8.60 min Scan# 971
 Delta R.T. 0.04 min
 Lab File: BM018136.D
 Acq: 13 Dec 2018 19:30

Tgt Ion	Resp	Lower	Upper
117	75275		
201	0.0	82.7	124.1#
199	0.0	50.7	76.1#

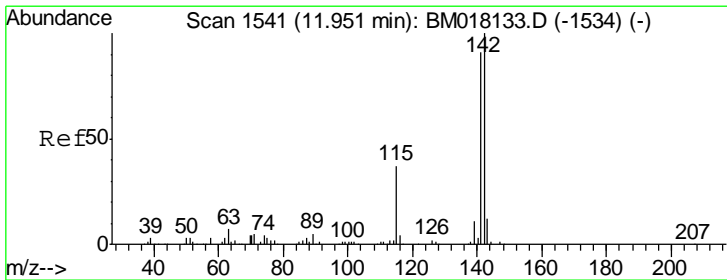
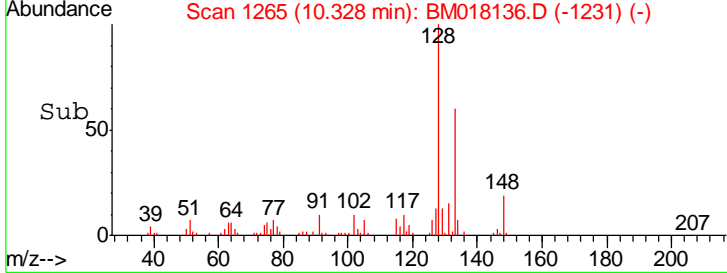
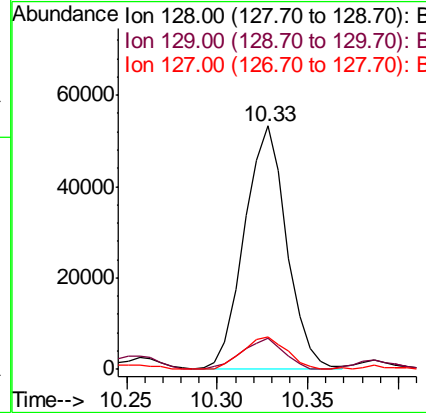
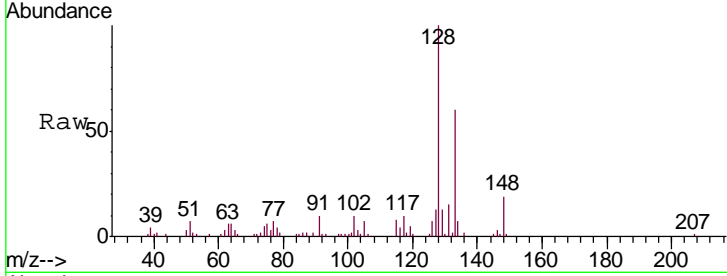




#28
 Naphthalene
 Concen: 2.955 ng/ul
 RT: 10.33 min Scan# 1265
 Delta R.T. 0.00 min
 Lab File: BM018136.D
 Acq: 13 Dec 2018 19:30

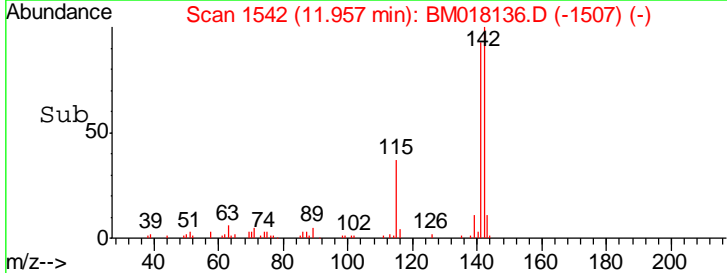
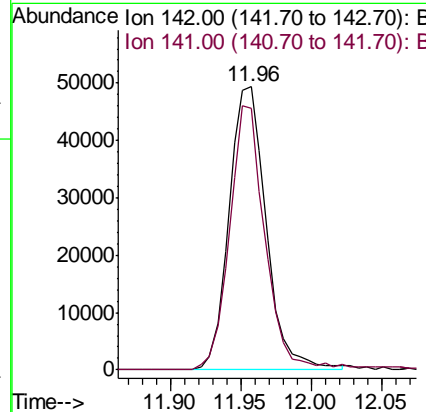
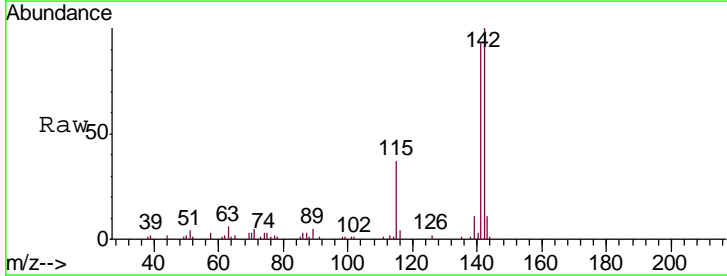
Instrument :
 BNA_M
 ClientSampled :
 F9F15

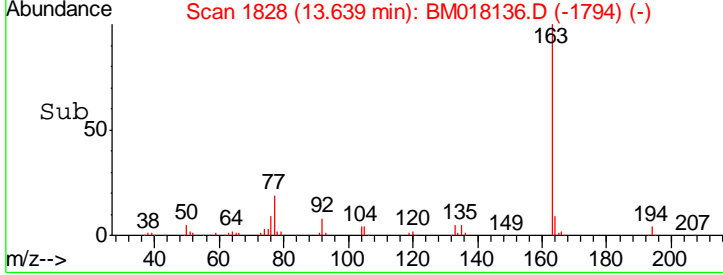
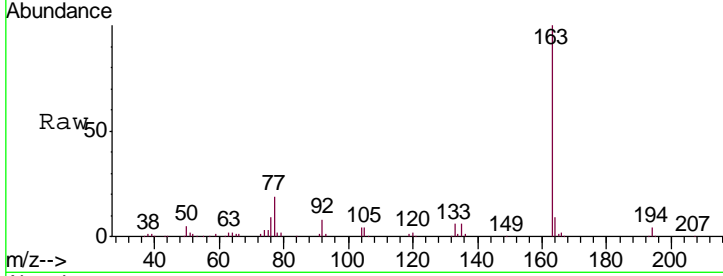
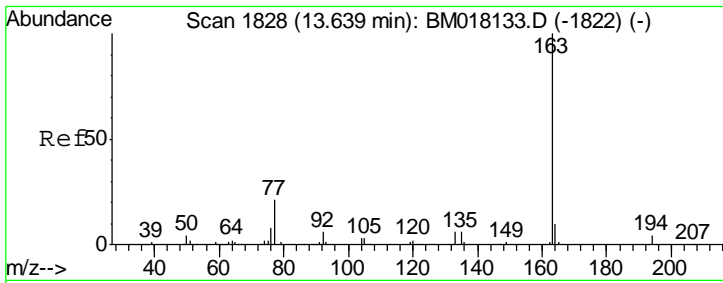
Tgt Ion	Resp	Lower	Upper
128	100		
129	12.8	8.2	12.4#
127	13.2	9.7	14.5



#34
 2-Methylnaphthalene
 Concen: 4.174 ng/ul
 RT: 11.96 min Scan# 1542
 Delta R.T. 0.01 min
 Lab File: BM018136.D
 Acq: 13 Dec 2018 19:30

Tgt Ion	Resp	Lower	Upper
142	100		
141	92.6	69.0	103.4





#44
 Dimethylphthalate
 Concen: 5.920 ng/ul
 RT: 13.64 min Scan# 1828
 Delta R.T. 0.00 min
 Lab File: BM018136.D
 Acq: 13 Dec 2018 19:30

Instrument :
 BNA_M
 ClientSampleId :
 F9F15

Tgt Ion: 163 Resp: 164773

Ion	Ratio	Lower	Upper
163	100		
194	3.9	3.7	5.5
164	9.1	8.2	12.4

