

Data Path : Z:\svoasrv\HPCHEM1\BNA_M\Data\BM121323\
 Data File : BM043321.D
 Acq On : 14 Dec 2023 03:00
 Operator : MA/JU
 Sample : PB157638BS
 Misc :
 ALS Vial : 17 Sample Multiplier: 1

Instrument :
 BNA_M
 ClientSampleId :
 SLCS638

Manual Integrations
 APPROVED

Reviewed By :Yogesh Patel 12/14/2023
 Supervised By :mohammad ahmed 12/15/2023

Quant Time: Dec 14 03:31:46 2023
 Quant Method : Z:\svoasrv\HPCHEM1\BNA_M\Methods\SFAM-EPA-BM120723.MA.M
 Quant Title : SVOA CALIBRATION
 QLast Update : Wed Dec 13 22:33:14 2023
 Response via : Initial Calibration

Compound	R.T.	QIon	Response	Conc	Units	Dev(Min)
Internal Standards						
1) 1,4-Dichlorobenzene-d4	7.998	152	411117	20.000	ng/u1	0.00
20) Naphthalene-d8	10.810	136	1919832	20.000	ng/u1	0.00
38) Acenaphthene-d10	14.627	164	1094440	20.000	ng/u1	0.00
64) Phenanthrene-d10	17.368	188	2109201	20.000	ng/u1	# 0.00
79) Chrysene-d12	21.539	240	1460500	20.000	ng/u1	# 0.00
88) Perylene-d12	23.956	264	1291103	20.000	ng/u1	0.00
System Monitoring Compounds						
3) 1,4-Dioxane-d8	3.399	96	69316	6.617	ng/uL	0.00
4) Pyridine-d5	3.816	84	1092629	35.154	ng/u1	0.00
7) Phenol-d5	7.163	99	1559910	38.219	ng/u1	0.00
9) Bis-(2-Chloroethyl)eth...	7.340	67	960556	38.017	ng/u1	0.00
11) 2-Chlorophenol-d4	7.528	132	1172196	37.673	ng/u1	0.00
15) 4-Methylphenol-d8	8.716	113	1218222	37.728	ng/u1	0.00
21) Nitrobenzene-d5	9.175	128	602800	36.838	ng/u1	0.00
24) 2-Nitrophenol-d4	9.892	143	639764	40.545	ng/u1	0.00
28) 2,4-Dichlorophenol-d3	10.428	165	1152752	32.776	ng/u1	0.00
31) 4-Chloroaniline-d4	10.951	131	1633347	32.276	ng/u1	0.00
46) Dimethylphthalate-d6	14.045	166	3259423	33.974	ng/u1	0.00
49) Acenaphthylene-d8	14.322	160	3872171	34.887	ng/u1	0.00
54) 4-Nitrophenol-d4	14.827	143	645564	37.552	ng/u1	0.00
60) Fluorene-d10	15.616	176	2718307	32.504	ng/u1	0.00
65) 4,6-Dinitro-2-methylph...	15.739	200	312235	26.897	ng/u1	0.00
73) Anthracene-d10	17.468	188	3923857	34.387	ng/u1	0.00
81) Pyrene-d10	19.751	212	3906899	41.807	ng/u1	0.00
92) Benzo(a)pyrene-d12	23.797	264	2669386	35.432	ng/u1	0.00
Target Compounds						
2) 1,4-Dioxane	3.434	88	148154	12.876	ng/uL	94
5) Pyridine	3.834	79	1171887	36.685	ng/u1	99
6) Benzaldehyde	7.146	77	786919m	37.460	ng/u1	
8) Phenol	7.187	94	1592917	39.463	ng/u1	100
10) Bis(2-Chloroethyl)ether	7.434	93	1255628	38.580	ng/u1	100
12) 2-Chlorophenol	7.563	128	1231141	39.002	ng/u1	99
13) 2-Methylphenol	8.445	108	1211303	38.807	ng/u1	98
14) 2,2'-oxybis(1-Chloropr...	8.528	45	2148789	39.710	ng/u1	99
16) Acetophenone	8.834	105	1891849	36.453	ng/u1	98
17) N-Nitroso-di-n-propyla...	8.822	70	1062593	37.354	ng/u1	98
18) 4-Methylphenol	8.781	108	1313620	38.788	ng/u1	99
19) Hexachloroethane	9.075	117	505917	37.811	ng/u1#	81
22) Nitrobenzene	9.216	77	1519964	38.633	ng/u1	100
23) Isophorone	9.739	82	2986105	35.620	ng/u1	98
25) 2-Nitrophenol	9.922	139	694420	40.154	ng/u1	94
26) 2,4-Dimethylphenol	9.981	107	1216360	35.874	ng/u1	97
27) Bis(2-Chloroethoxy)met...	10.228	93	1770296	35.916	ng/u1	100
29) 2,4-Dichlorophenol	10.457	162	1132914	33.188	ng/u1	95
30) Naphthalene	10.857	128	4065425	34.500	ng/u1	99
32) 4-Chloroaniline	10.975	127	1385098	29.018	ng/u1	100
33) Hexachlorobutadiene	11.128	225	583107	27.414	ng/u1	99
34) Caprolactam	11.763	113	433256m	42.685	ng/u1	
35) 4-Chloro-3-methylphenol	12.092	107	1316044	36.715	ng/u1	97
36) 2-Methylnaphthalene	12.463	142	2772210	32.699	ng/u1	99

Data Path : Z:\svoasrv\HPCHEM1\BNA_M\Data\BM121323\
 Data File : BM043321.D
 Acq On : 14 Dec 2023 03:00
 Operator : MA/JU
 Sample : PB157638BS
 Misc :
 ALS Vial : 17 Sample Multiplier: 1

Instrument :
 BNA_M
 ClientSampleId :
 SLCS638

Manual Integrations
 APPROVED

Reviewed By :Yogesh Patel 12/14/2023
 Supervised By :mohammad ahmed 12/15/2023

Quant Time: Dec 14 03:31:46 2023
 Quant Method : Z:\svoasrv\HPCHEM1\BNA_M\Methods\SFAM-EPA-BM120723.MA.M
 Quant Title : SVOA CALIBRATION
 QLast Update : Wed Dec 13 22:33:14 2023
 Response via : Initial Calibration

Compound	R.T.	QIon	Response	Conc	Units	Dev(Min)
37) 1-Methylnaphthalene	12.680	142	2737928	31.817	ng/ul	99
39) 1,2,4,5-Tetrachloroben...	12.822	216	1165421	31.474	ng/ul#	96
40) Hexachlorocyclopentadiene	12.792	237	536927	25.555	ng/ul	98
41) 2,4,6-Trichlorophenol	13.063	196	814592	35.354	ng/ul	97
42) 2,4,5-Trichlorophenol	13.133	196	889895	35.486	ng/ul	99
43) 1,1'-Biphenyl	13.469	154	3524347	36.402	ng/ul#	98
44) 2-Chloronaphthalene	13.510	162	2717303	36.207	ng/ul	97
45) 2-Nitroaniline	13.722	65	947387	47.771	ng/ul	95
47) Dimethylphthalate	14.092	163	3321613	35.300	ng/ul	99
48) 2,6-Dinitrotoluene	14.222	165	687460	39.654	ng/ul	97
50) Acenaphthylene	14.351	152	4605156	36.710	ng/ul	99
51) 3-Nitroaniline	14.545	138	780800	40.596	ng/ul	94
52) Acenaphthene	14.692	153	2980580	36.021	ng/ul	100
53) 2,4-Dinitrophenol	14.745	184	197512	24.817	ng/ul#	83
55) 4-Nitrophenol	14.845	109	508413	40.900	ng/ul	95
56) Dibenzofuran	15.027	168	3869495	34.234	ng/ul	95
57) 2,4-Dinitrotoluene	14.998	165	976804	39.462	ng/ul	89
58) 2,3,4,6-Tetrachlorophenol	15.245	232	651298	31.246	ng/ul#	86
59) Diethylphthalate	15.451	149	3509442	37.079	ng/ul	97
61) Fluorene	15.674	166	3357571	34.315	ng/ul	100
62) 4-Chlorophenyl-phenyle...	15.669	204	1493333	30.893	ng/ul	91
63) 4-Nitroaniline	15.704	138	824717	42.677	ng/ul	97
66) 4,6-Dinitro-2-methylph...	15.757	198	346752	27.318	ng/ul#	89
67) N-Nitrosodiphenylamine	15.886	169	2716558	38.407	ng/ul	100
68) 4-Bromophenyl-phenylether	16.563	248	861372	33.772	ng/ul	94
69) Hexachlorobenzene	16.663	284	989986	32.712	ng/ul#	92
70) Atrazine	16.839	200	581524	29.154	ng/ul	95
71) Pentachlorophenol	17.010	266	539000	30.247	ng/ul	99
72) Phenanthrene	17.410	178	4894002	37.210	ng/ul	100
74) Anthracene	17.504	178	4927913	37.195	ng/ul	99
75) 1,2,3,4-Tetrachloroben...	13.427	216	1181273	35.401	ng/uL	99
76) Pentachlorobenzene	14.939	250	1149594	33.901	ng/uL	97
77) Carbazole	17.774	167	4543548	41.749	ng/ul	98
78) Di-n-butylphthalate	18.339	149	6201034	43.805	ng/ul	99
80) Fluoranthene	19.415	202	5030741	46.929	ng/ul#	92
82) Pyrene	19.780	202	5154573	46.225	ng/ul#	94
83) Butylbenzylphthalate	20.686	149	2642311	59.569	ng/ul	97
84) 3,3'-Dichlorobenzidine	21.456	252	1245109	35.871	ng/ul	98
85) Benzo(a)anthracene	21.521	228	4251121	37.964	ng/ul	100
86) Bis(2-ethylhexyl)phtha...	21.456	149	4036982	57.655	ng/ul#	98
87) Chrysene	21.574	228	3805512	38.050	ng/ul	99
89) Di-n-octyl phthalate	22.403	149	6410073	72.180	ng/ul	100
90) Benzo(b)fluoranthene	23.221	252	3525103	38.267	ng/ul#	98
91) Benzo(k)fluoranthene	23.268	252	3386079	36.906	ng/ul#	97
93) Benzo(a)pyrene	23.850	252	3119892	36.641	ng/ul#	97
94) Indeno(1,2,3-cd)pyrene	26.480	276	3686273	38.007	ng/ul#	92
95) Dibenzo(a,h)anthracene	26.503	278	3065560	37.801	ng/ul#	95
96) Benzo(g,h,i)perylene	27.256	276	2885773	39.492	ng/ul#	94

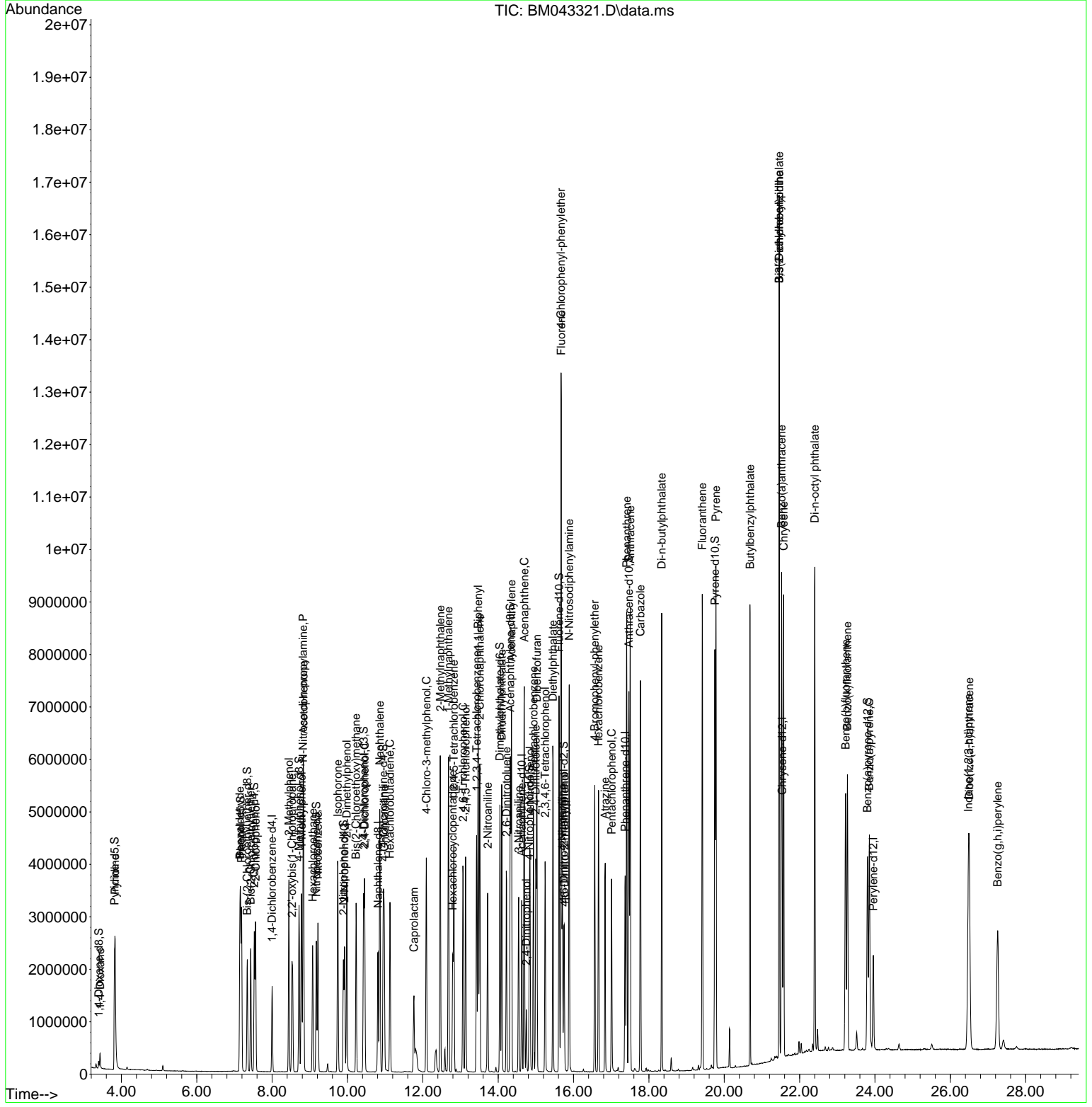
(#) = qualifier out of range (m) = manual integration (+) = signals summed

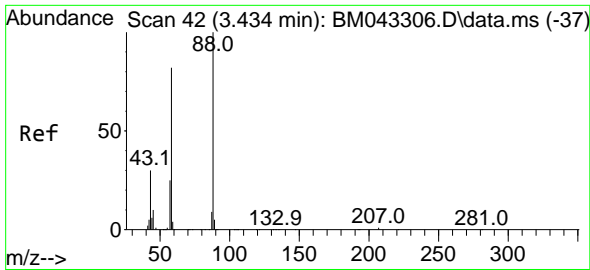
Data Path : Z:\svoasrv\HPCHEM1\BNA_M\Data\BM121323\
 Data File : BM043321.D
 Acq On : 14 Dec 2023 03:00
 Operator : MA/JU
 Sample : PB157638BS
 Misc :
 ALS Vial : 17 Sample Multiplier: 1

Instrument :
 BNA_M
 ClientSampleId :
 SLCS638

Quant Time: Dec 14 03:31:46 2023
 Quant Method : Z:\svoasrv\HPCHEM1\BNA_M\Methods\SFAM-EPA-BM120723.MA.M
 Quant Title : SVOA CALIBRATION
 QLast Update : Wed Dec 13 22:33:14 2023
 Response via : Initial Calibration

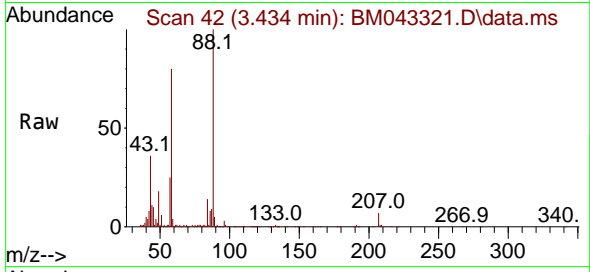
Manual Integrations
APPROVED
 Reviewed By :Yogesh Patel 12/14/2023
 Supervised By :mohammad ahmed 12/15/2023





#2
 1,4-Dioxane
 Concen: 12.876 ng/uL
 RT: 3.434 min Scan# 41
 Delta R.T. 0.000 min
 Lab File: BM043321.D
 Acq: 14 Dec 2023 03:00

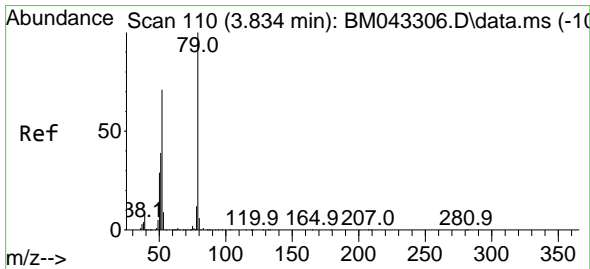
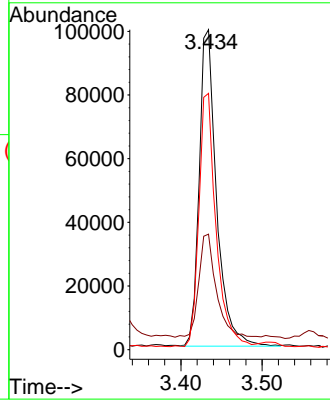
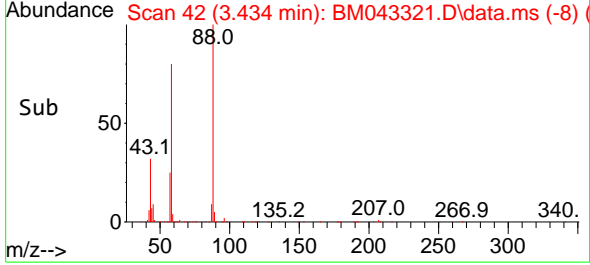
Instrument :
 BNA_M
 ClientSampleId :
 SLCS638



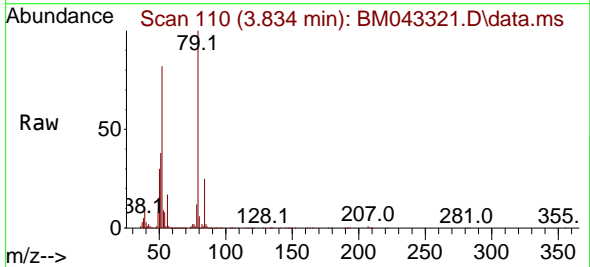
Tgt Ion: 88 Resp: 148154
 Ion Ratio Lower Upper
 88 100
 43 36.1 25.0 37.4
 58 80.1 60.6 90.8

Manual Integrations
 APPROVED

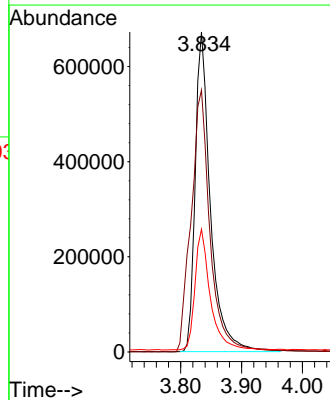
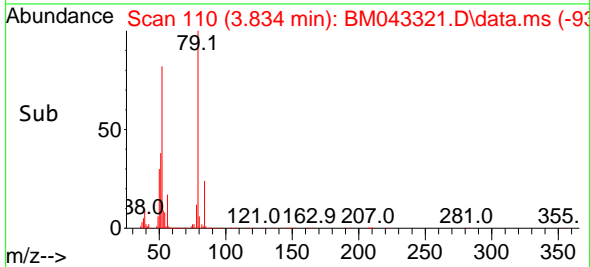
Reviewed By :Yogesh Patel 12/14/2023
 Supervised By :mohammad ahmed 12/15/2023

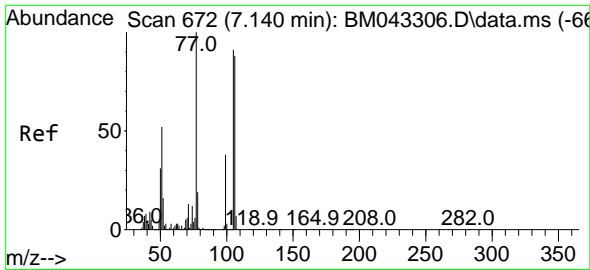


#5
 Pyridine
 Concen: 36.685 ng/uL
 RT: 3.834 min Scan# 110
 Delta R.T. 0.000 min
 Lab File: BM043321.D
 Acq: 14 Dec 2023 03:00



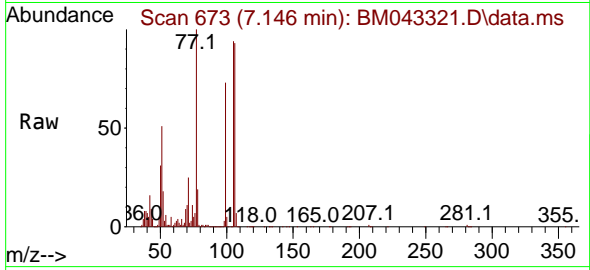
Tgt Ion: 79 Resp: 1171887
 Ion Ratio Lower Upper
 79 100
 52 81.9 64.9 97.3
 51 38.4 31.0 46.4





#6
Benzaldehyde
Concen: 37.460 ng/ul m
RT: 7.146 min Scan# 6
Delta R.T. 0.006 min
Lab File: BM043321.D
Acq: 14 Dec 2023 03:00

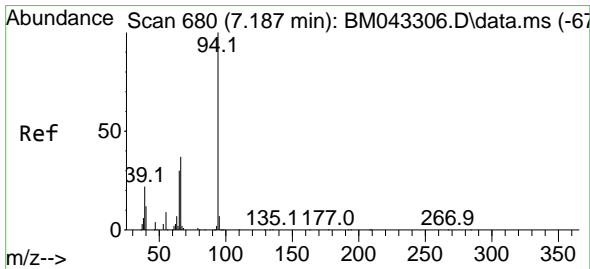
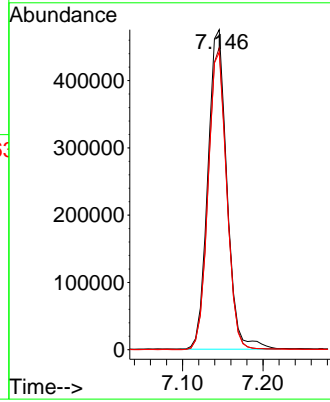
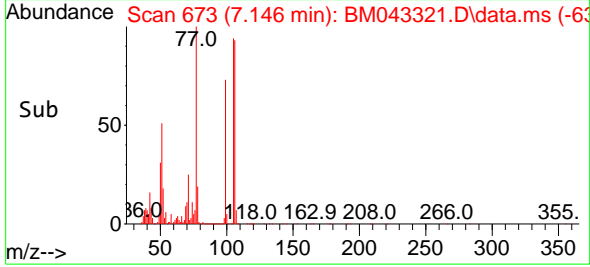
Instrument :
BNA_M
ClientSampleId :
SLCS638



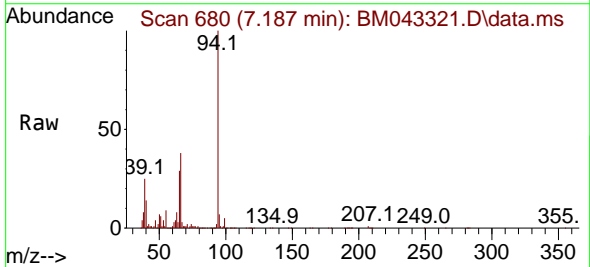
Tgt Ion: 77 Resp: 786919
Ion Ratio Lower Upper
77 100
105 94.3 76.3 114.5
106 92.9 74.6 112.0

Manual Integrations
APPROVED

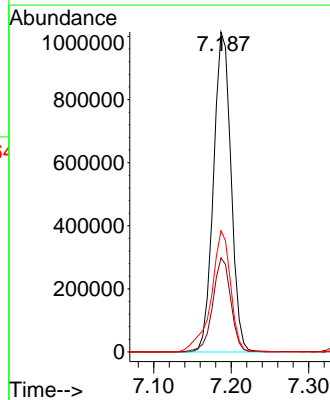
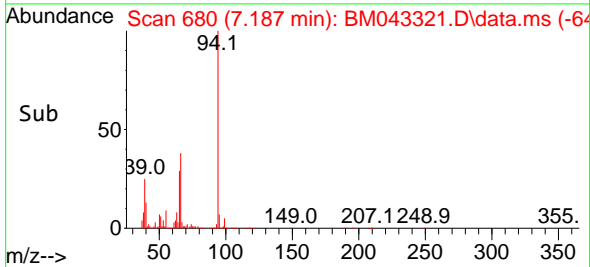
Reviewed By :Yogesh Patel 12/14/2023
Supervised By :mohammad ahmed 12/15/2023

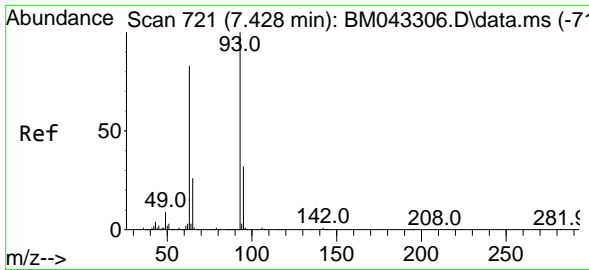


#8
Phenol
Concen: 39.463 ng/ul
RT: 7.187 min Scan# 680
Delta R.T. 0.000 min
Lab File: BM043321.D
Acq: 14 Dec 2023 03:00



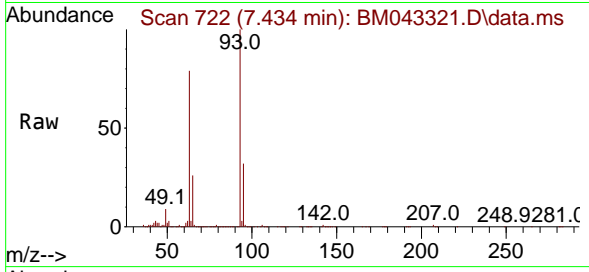
Tgt Ion: 94 Resp: 1592917
Ion Ratio Lower Upper
94 100
65 29.4 23.5 35.3
66 37.9 29.9 44.9





#10
 Bis(2-Chloroethyl)ether
 Concen: 38.580 ng/ul
 RT: 7.434 min Scan# 721
 Delta R.T. 0.006 min
 Lab File: BM043321.D
 Acq: 14 Dec 2023 03:00

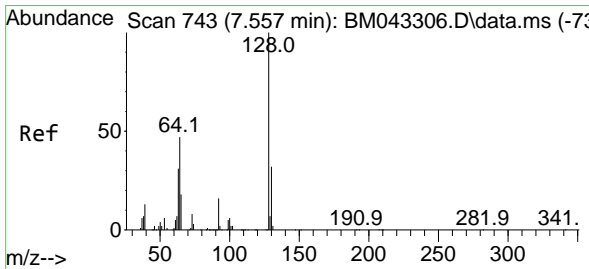
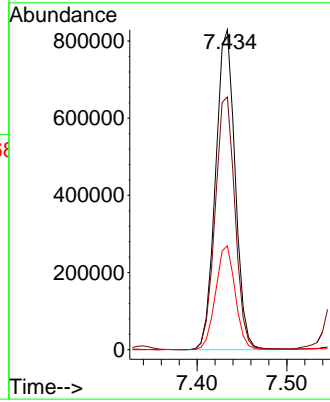
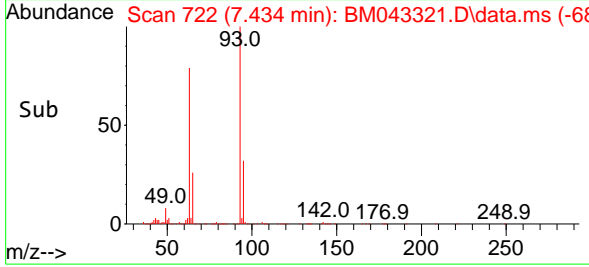
Instrument :
 BNA_M
 ClientSampleId :
 SLCS638



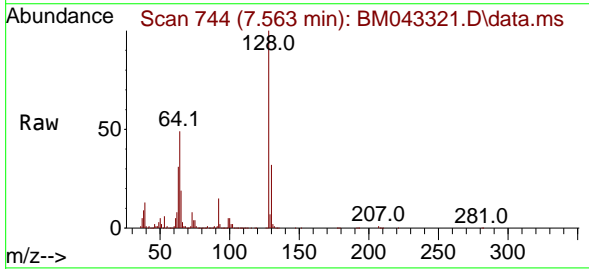
Tgt Ion: 93 Resp: 1255628
 Ion Ratio Lower Upper
 93 100
 63 79.0 63.0 94.4
 95 32.5 26.0 39.0

Manual Integrations
 APPROVED

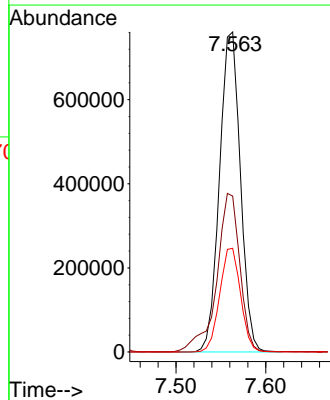
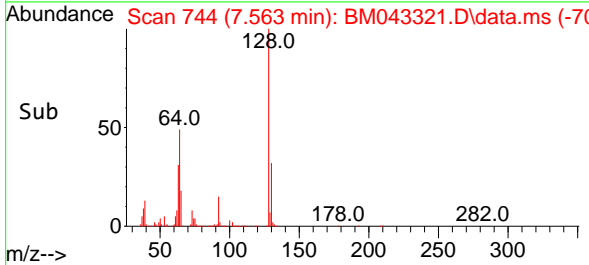
Reviewed By :Yogesh Patel 12/14/2023
 Supervised By :mohammad ahmed 12/15/2023

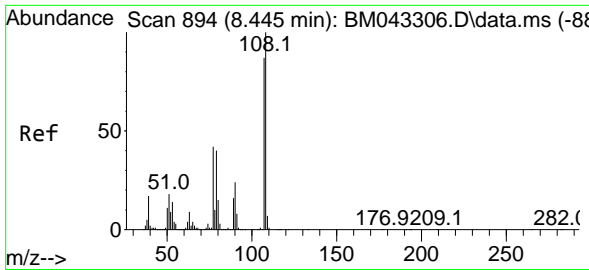


#12
 2-Chlorophenol
 Concen: 39.002 ng/ul
 RT: 7.563 min Scan# 744
 Delta R.T. 0.006 min
 Lab File: BM043321.D
 Acq: 14 Dec 2023 03:00



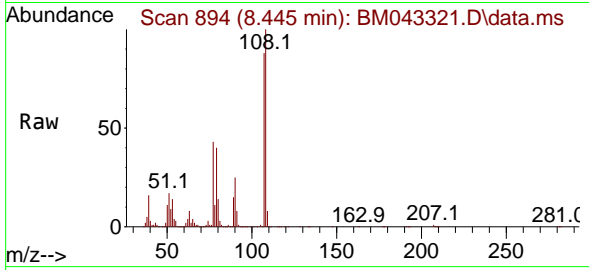
Tgt Ion:128 Resp: 1231141
 Ion Ratio Lower Upper
 128 100
 64 48.7 38.3 57.5
 130 32.4 26.6 40.0





#13
 2-Methylphenol
 Concen: 38.807 ng/ul
 RT: 8.445 min Scan# 894
 Delta R.T. 0.000 min
 Lab File: BM043321.D
 Acq: 14 Dec 2023 03:00

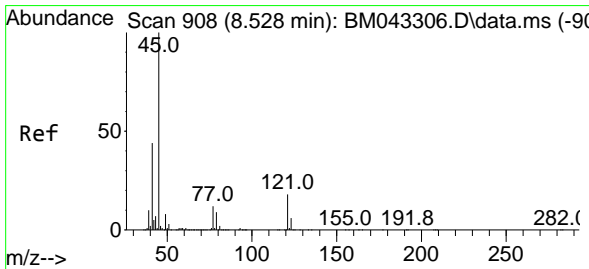
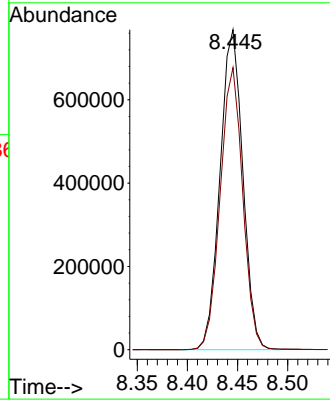
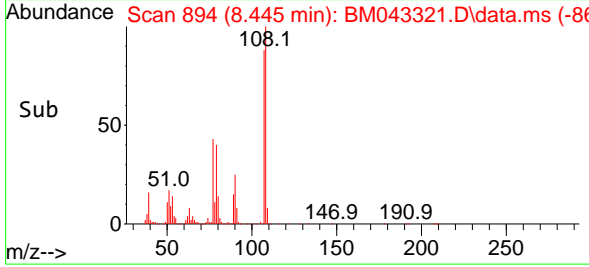
Instrument :
 BNA_M
 ClientSampleId :
 SLCS638



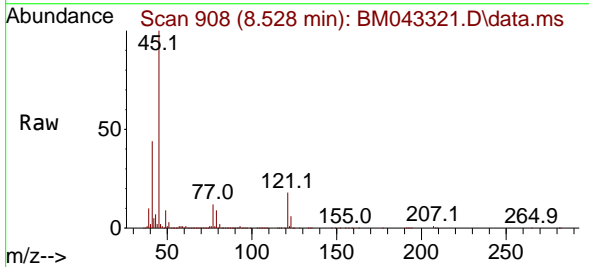
Tgt Ion: 108 Resp: 121130
 Ion Ratio Lower Upper
 108 100
 107 88.1 71.8 107.6

Manual Integrations
 APPROVED

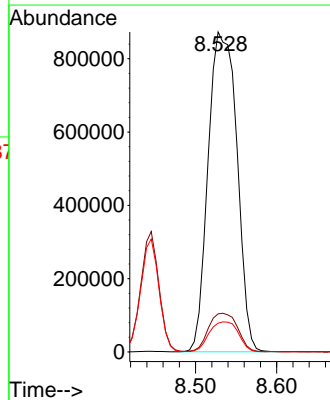
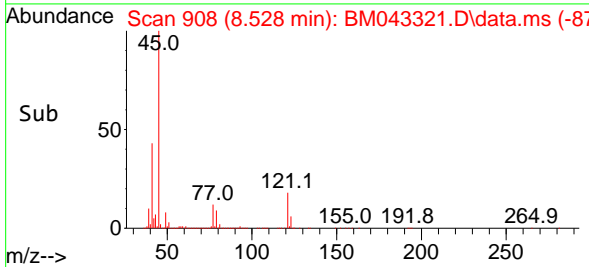
Reviewed By :Yogesh Patel 12/14/2023
 Supervised By :mohammad ahmed 12/15/2023

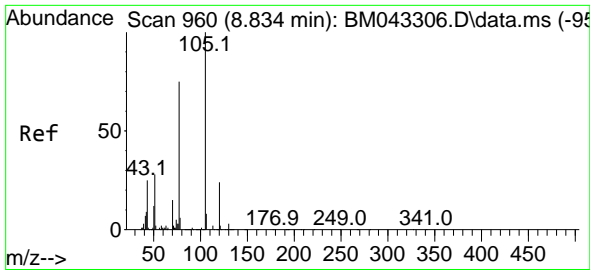


#14
 2,2'-oxybis(1-Chloropropane)
 Concen: 39.710 ng/ul
 RT: 8.528 min Scan# 908
 Delta R.T. 0.000 min
 Lab File: BM043321.D
 Acq: 14 Dec 2023 03:00



Tgt Ion: 45 Resp: 2148789
 Ion Ratio Lower Upper
 45 100
 77 11.9 10.2 15.2
 79 9.0 7.2 10.8





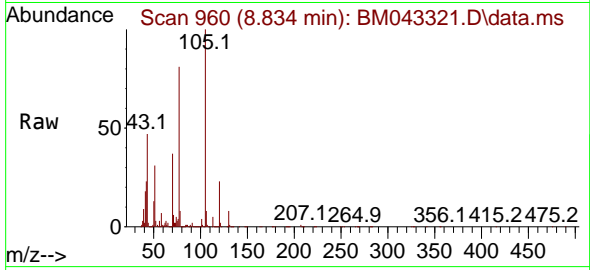
#16
 Acetophenone
 Concen: 36.453 ng/ul
 RT: 8.834 min Scan# 901
 Delta R.T. 0.000 min
 Lab File: BM043321.D
 Acq: 14 Dec 2023 03:00

Instrument :

BNA_M

ClientSampleId :

SLCS638



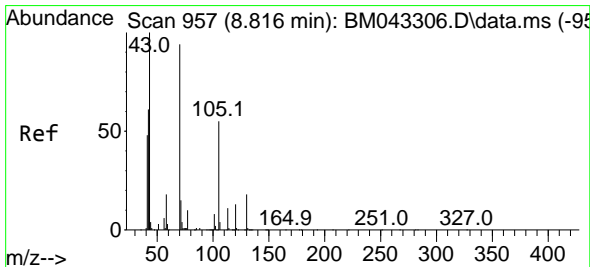
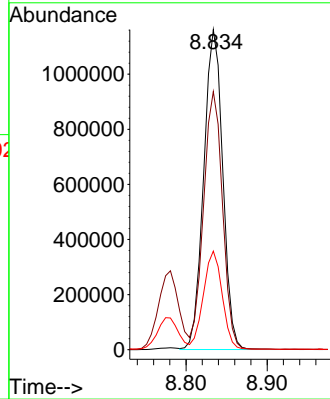
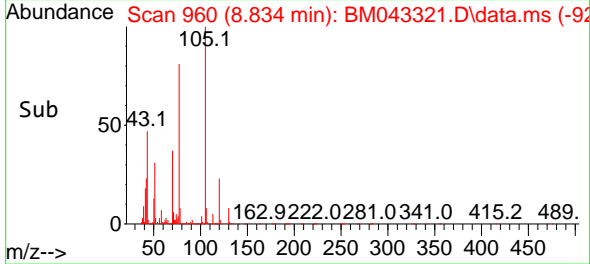
Tgt Ion: 105 Resp: 1891849
 Ion Ratio Lower Upper
 105 100
 77 80.6 62.7 94.1
 51 30.8 23.8 35.8

Manual Integrations

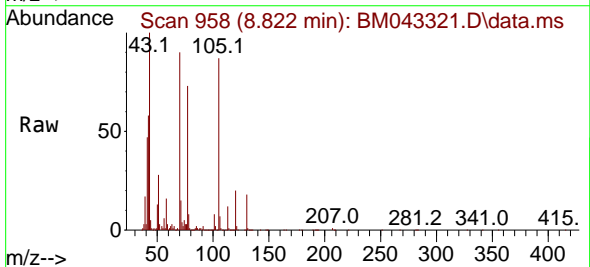
APPROVED

Reviewed By :Yogesh Patel 12/14/2023

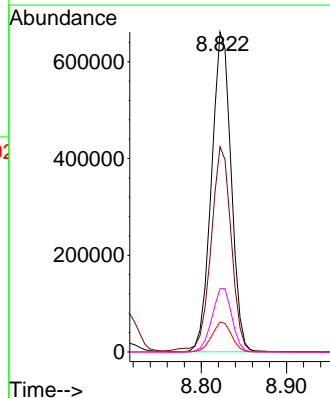
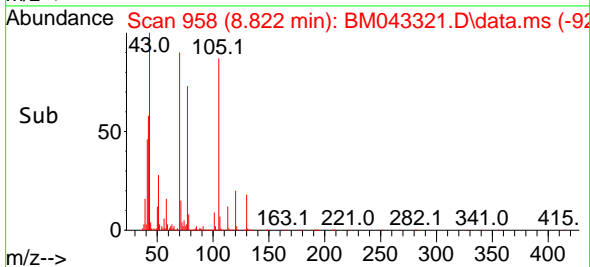
Supervised By :mohammad ahmed 12/15/2023

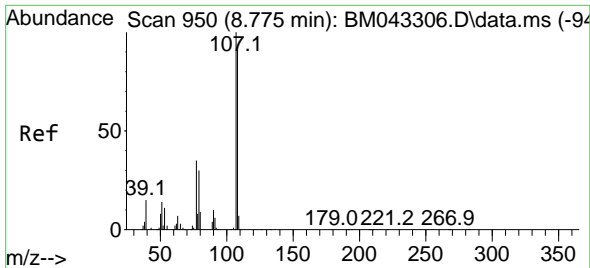


#17
 N-Nitroso-di-n-propylamine
 Concen: 37.354 ng/ul
 RT: 8.822 min Scan# 958
 Delta R.T. 0.006 min
 Lab File: BM043321.D
 Acq: 14 Dec 2023 03:00



Tgt Ion: 70 Resp: 1062593
 Ion Ratio Lower Upper
 70 100
 42 64.1 52.3 78.5
 101 9.4 7.0 10.6
 130 19.7 16.2 24.2





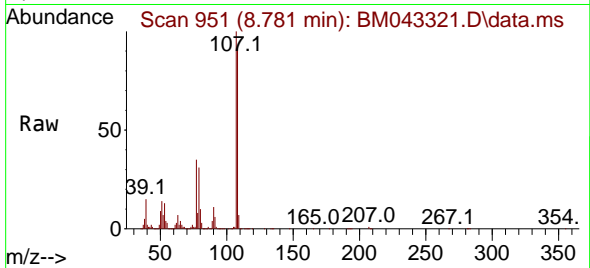
#18
 4-Methylphenol
 Concen: 38.788 ng/uI
 RT: 8.781 min Scan# 951
 Delta R.T. 0.006 min
 Lab File: BM043321.D
 Acq: 14 Dec 2023 03:00

Instrument :

BNA_M

ClientSampleId :

SLCS638



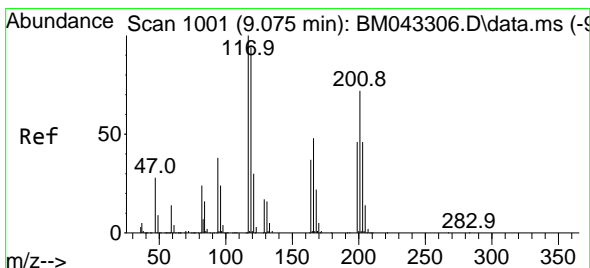
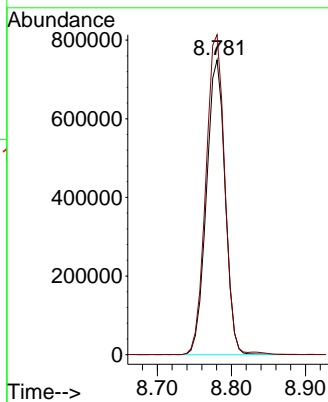
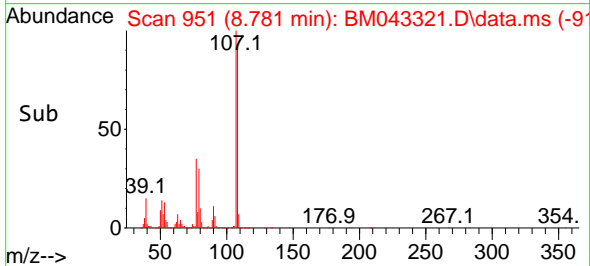
Tgt Ion:108 Resp: 1313620
 Ion Ratio Lower Upper
 108 100
 107 108.6 86.4 129.6

Manual Integrations

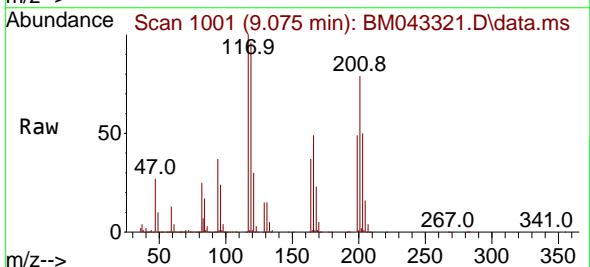
APPROVED

Reviewed By :Yogesh Patel 12/14/2023

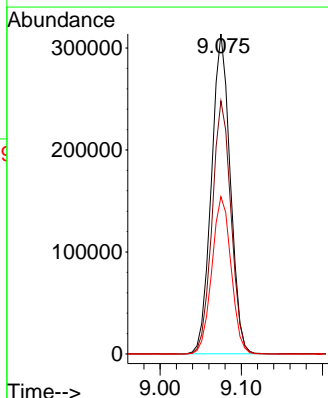
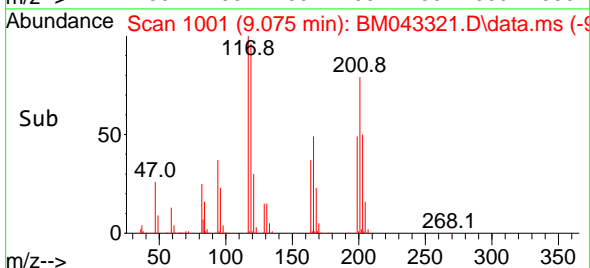
Supervised By :mohammad ahmed 12/15/2023

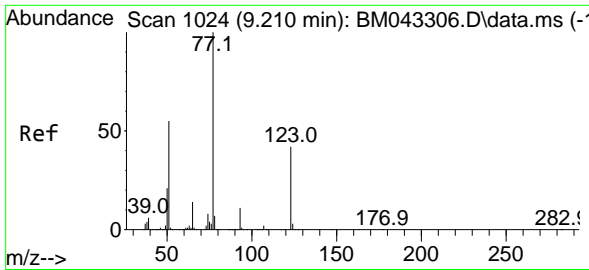


#19
 Hexachloroethane
 Concen: 37.811 ng/uI
 RT: 9.075 min Scan# 1001
 Delta R.T. 0.000 min
 Lab File: BM043321.D
 Acq: 14 Dec 2023 03:00



Tgt Ion:117 Resp: 505917
 Ion Ratio Lower Upper
 117 100
 201 79.1 79.2 118.8#
 199 49.1 49.8 74.8#





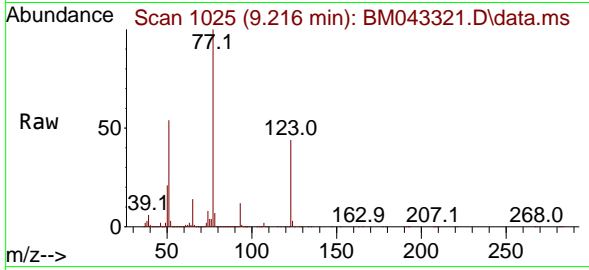
#22
 Nitrobenzene
 Concen: 38.633 ng/u1
 RT: 9.216 min Scan# 1024
 Delta R.T. 0.006 min
 Lab File: BM043321.D
 Acq: 14 Dec 2023 03:00

Instrument :

BNA_M

ClientSampleId :

SLCS638



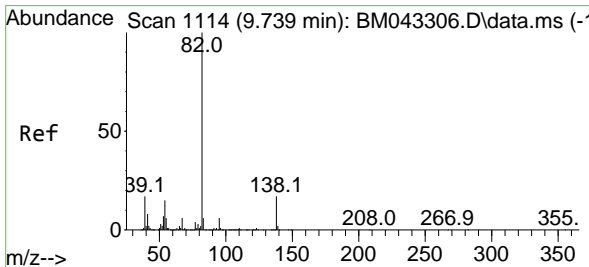
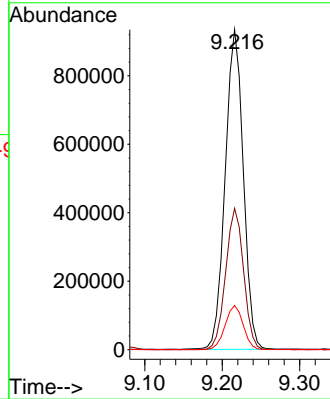
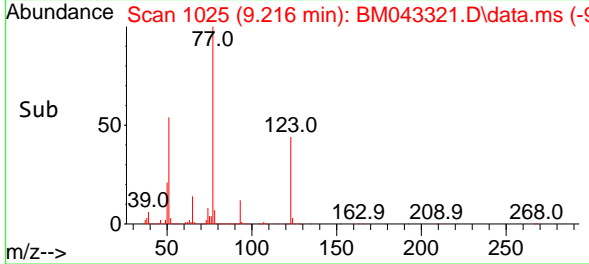
Tgt Ion: 77 Resp: 151996
 Ion Ratio Lower Upper
 77 100
 123 44.1 35.6 53.4
 65 13.8 11.0 16.4

Manual Integrations

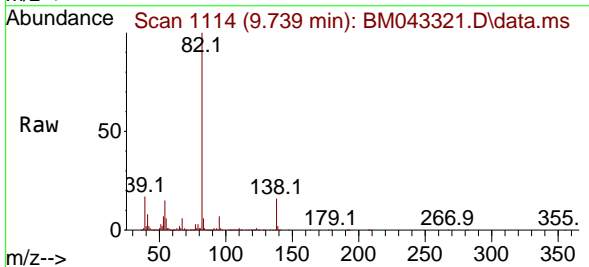
APPROVED

Reviewed By :Yogesh Patel 12/14/2023

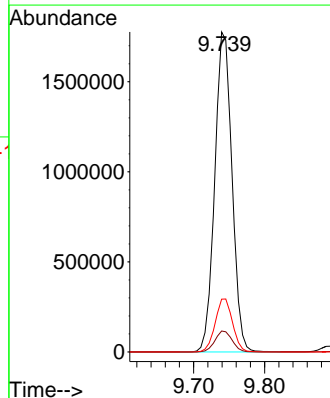
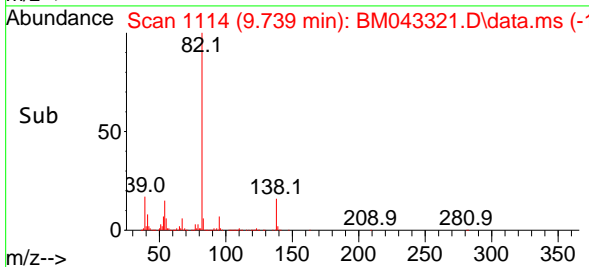
Supervised By :mohammad ahmed 12/15/2023

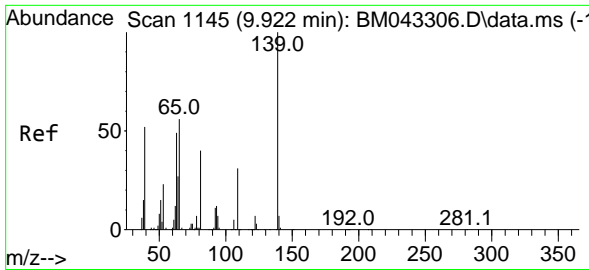


#23
 Isophorone
 Concen: 35.620 ng/u1
 RT: 9.739 min Scan# 1114
 Delta R.T. 0.000 min
 Lab File: BM043321.D
 Acq: 14 Dec 2023 03:00



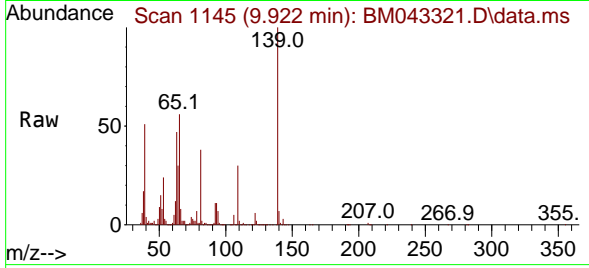
Tgt Ion: 82 Resp: 2986105
 Ion Ratio Lower Upper
 82 100
 95 6.6 5.2 7.8
 138 16.5 14.0 21.0





#25
 2-Nitrophenol
 Concen: 40.154 ng/uI
 RT: 9.922 min Scan# 1145
 Delta R.T. 0.000 min
 Lab File: BM043321.D
 Acq: 14 Dec 2023 03:00

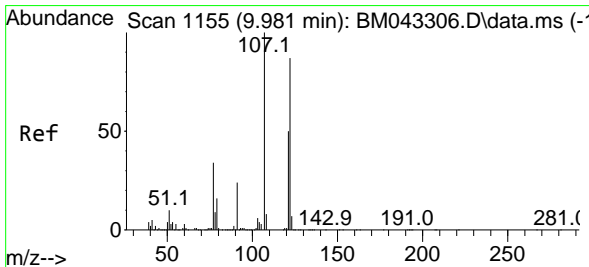
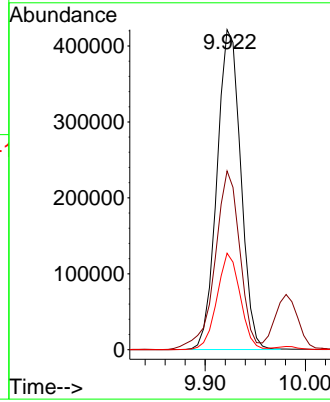
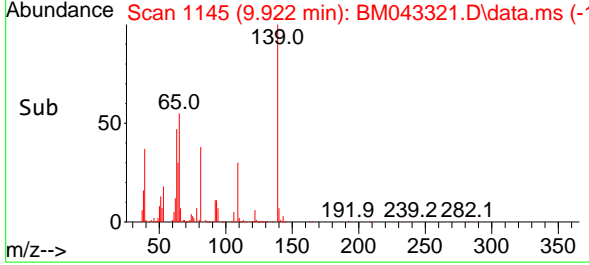
Instrument :
 BNA_M
 ClientSampleId :
 SLCS638



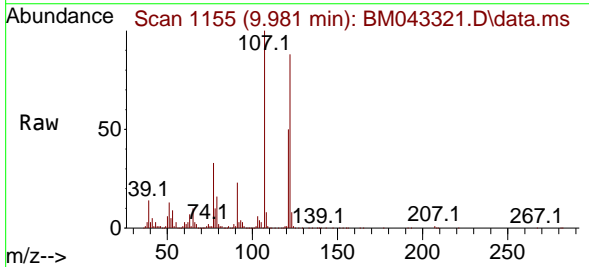
Tgt Ion:139 Resp: 694420
 Ion Ratio Lower Upper
 139 100
 65 55.9 40.6 60.8
 109 30.2 22.6 33.8

Manual Integrations
APPROVED

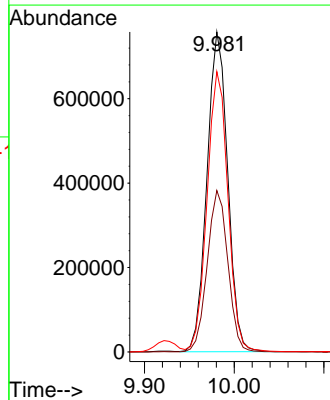
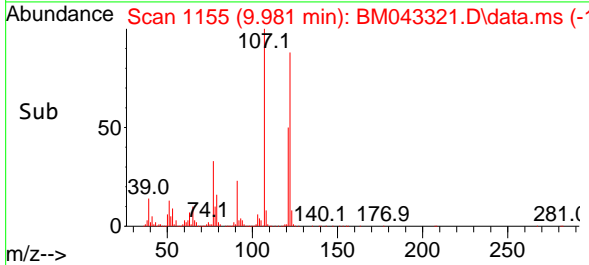
Reviewed By :Yogesh Patel 12/14/2023
 Supervised By :mohammad ahmed 12/15/2023

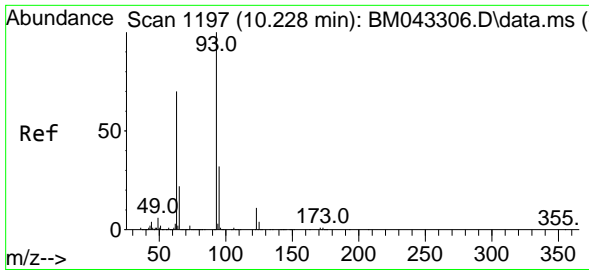


#26
 2,4-Dimethylphenol
 Concen: 35.874 ng/uI
 RT: 9.981 min Scan# 1155
 Delta R.T. 0.000 min
 Lab File: BM043321.D
 Acq: 14 Dec 2023 03:00



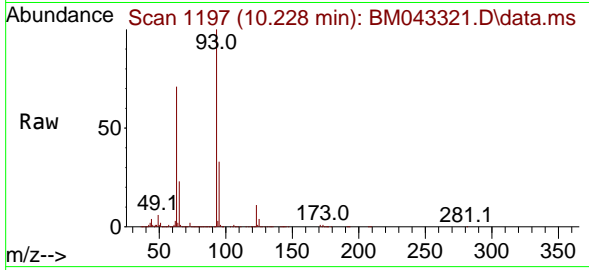
Tgt Ion:107 Resp: 1216360
 Ion Ratio Lower Upper
 107 100
 121 50.4 42.2 63.2
 122 87.6 72.0 108.0





#27
 Bis(2-Chloroethoxy)methane
 Concen: 35.916 ng/ul
 RT: 10.228 min Scan# 1197
 Delta R.T. 0.000 min
 Lab File: BM043321.D
 Acq: 14 Dec 2023 03:00

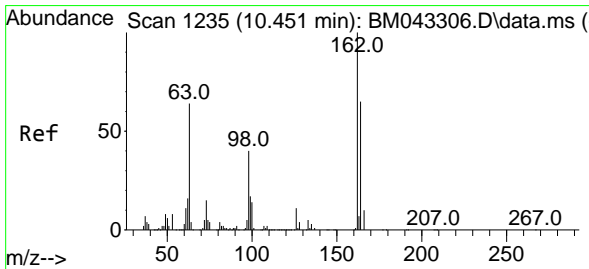
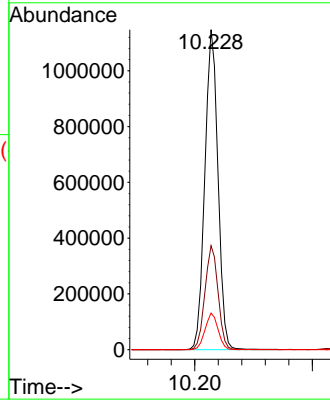
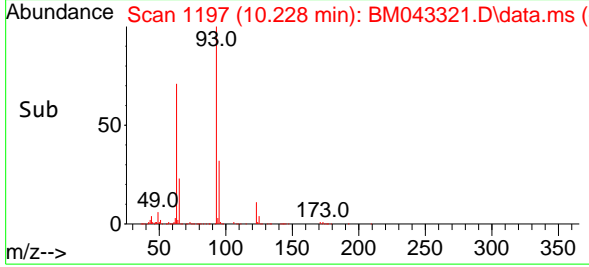
Instrument :
 BNA_M
 ClientSampleId :
 SLCS638



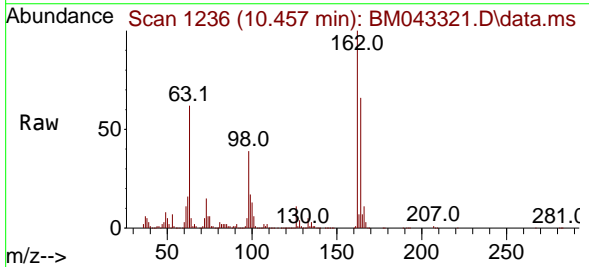
Tgt Ion: 93 Resp: 1770290
 Ion Ratio Lower Upper
 93 100
 95 32.5 26.2 39.2
 123 11.5 9.2 13.8

Manual Integrations
 APPROVED

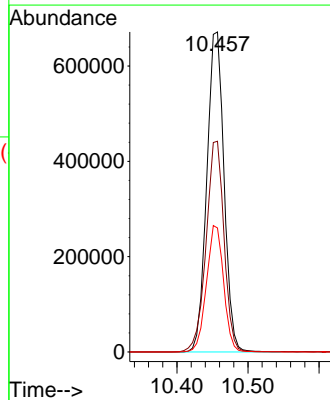
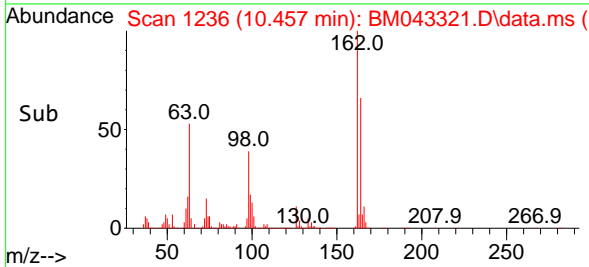
Reviewed By :Yogesh Patel 12/14/2023
 Supervised By :mohammad ahmed 12/15/2023

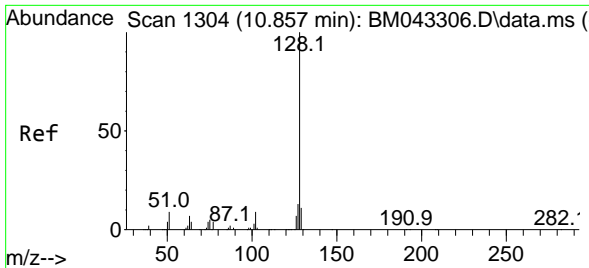


#29
 2,4-Dichlorophenol
 Concen: 33.188 ng/ul
 RT: 10.457 min Scan# 1236
 Delta R.T. 0.006 min
 Lab File: BM043321.D
 Acq: 14 Dec 2023 03:00



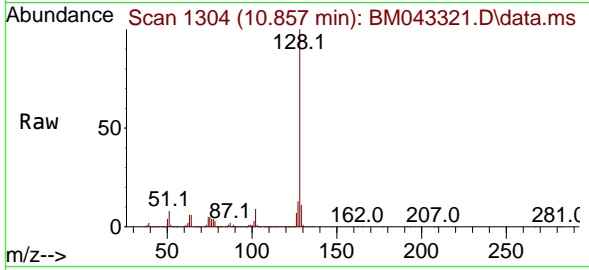
Tgt Ion:162 Resp: 1132914
 Ion Ratio Lower Upper
 162 100
 164 65.9 51.4 77.0
 98 38.8 26.9 40.3





#30
 Naphthalene
 Concen: 34.500 ng/u1
 RT: 10.857 min Scan# 1304
 Delta R.T. 0.000 min
 Lab File: BM043321.D
 Acq: 14 Dec 2023 03:00

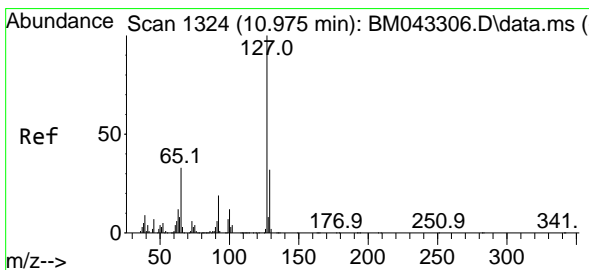
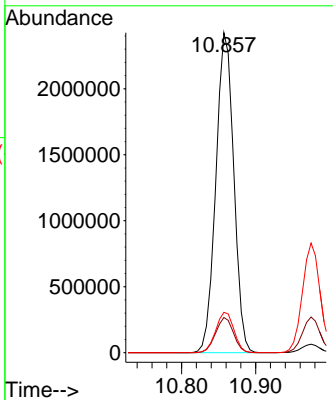
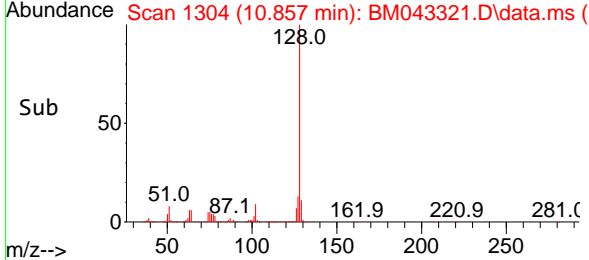
Instrument : BNA_M
 ClientSampleId : SLCS638



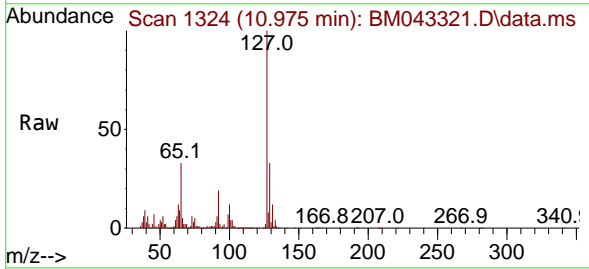
Tgt Ion:128 Resp: 406542
 Ion Ratio Lower Upper
 128 100
 129 11.0 9.0 13.4
 127 12.6 10.4 15.6

Manual Integrations
 APPROVED

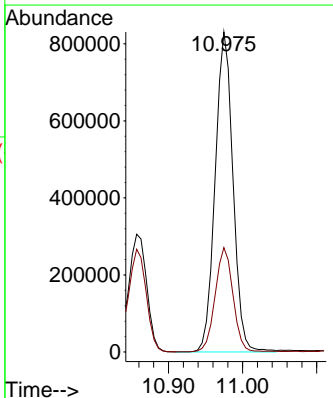
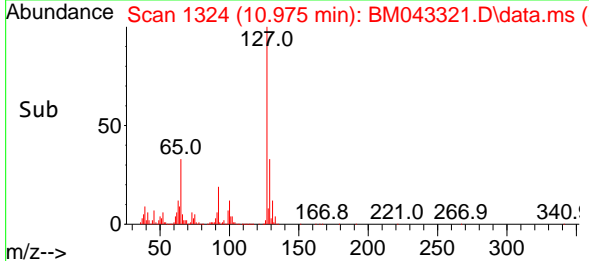
Reviewed By :Yogesh Patel 12/14/2023
 Supervised By :mohammad ahmed 12/15/2023

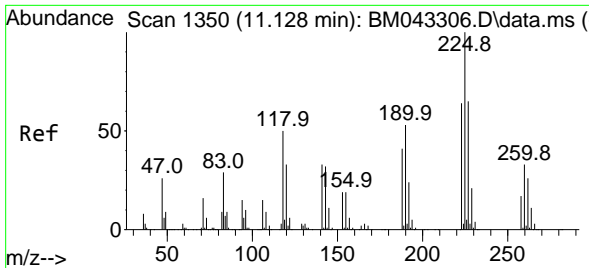


#32
 4-Chloroaniline
 Concen: 29.018 ng/u1
 RT: 10.975 min Scan# 1324
 Delta R.T. 0.000 min
 Lab File: BM043321.D
 Acq: 14 Dec 2023 03:00



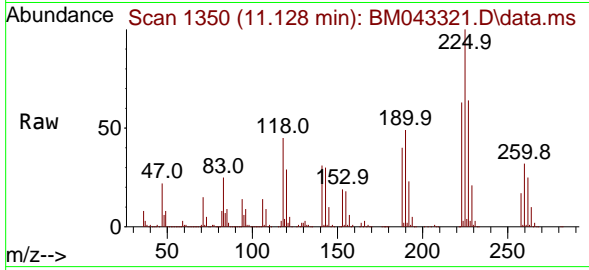
Tgt Ion:127 Resp: 1385098
 Ion Ratio Lower Upper
 127 100
 129 32.6 26.0 39.0





#33
 Hexachlorobutadiene
 Concen: 27.414 ng/ul
 RT: 11.128 min Scan# 111
 Delta R.T. 0.000 min
 Lab File: BM043321.D
 Acq: 14 Dec 2023 03:00

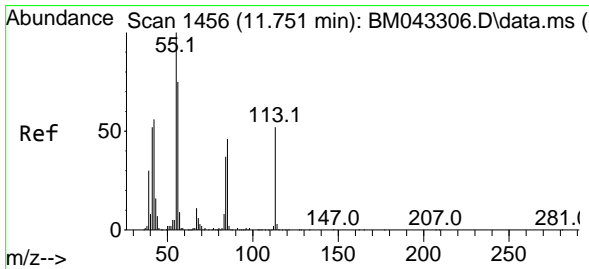
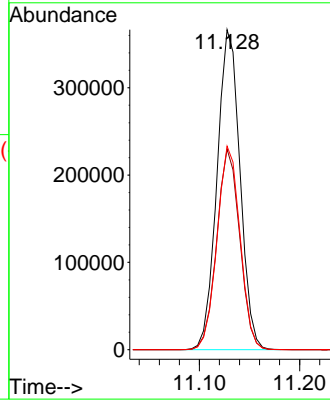
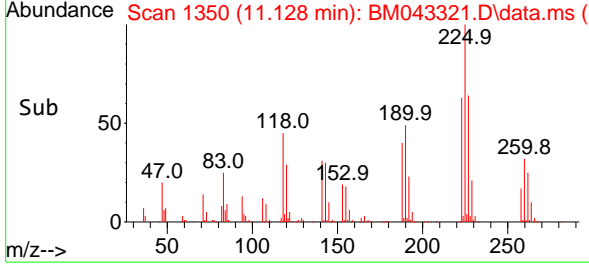
Instrument :
 BNA_M
 ClientSampleId :
 SLCS638



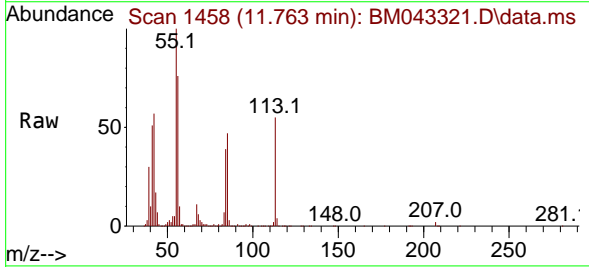
Tgt Ion:225 Resp: 58310
 Ion Ratio Lower Upper
 225 100
 223 62.6 50.2 75.4
 227 63.6 52.0 78.0

Manual Integrations
 APPROVED

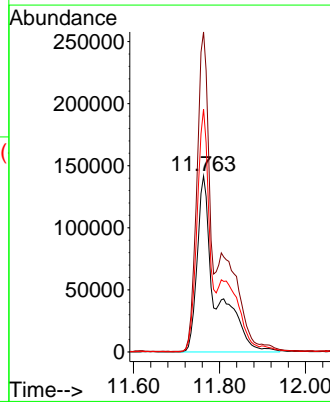
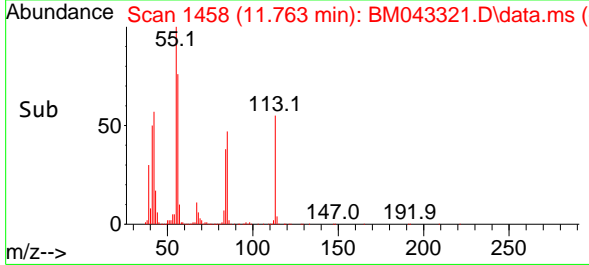
Reviewed By :Yogesh Patel 12/14/2023
 Supervised By :mohammad ahmed 12/15/2023

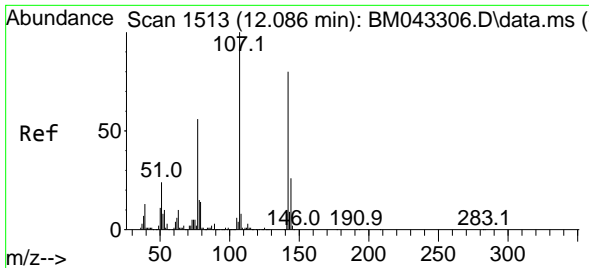


#34
 Caprolactam
 Concen: 42.685 ng/ul m
 RT: 11.763 min Scan# 1458
 Delta R.T. 0.012 min
 Lab File: BM043321.D
 Acq: 14 Dec 2023 03:00



Tgt Ion:113 Resp: 433256
 Ion Ratio Lower Upper
 113 100
 55 182.1 139.5 209.3
 56 138.2 103.5 155.3





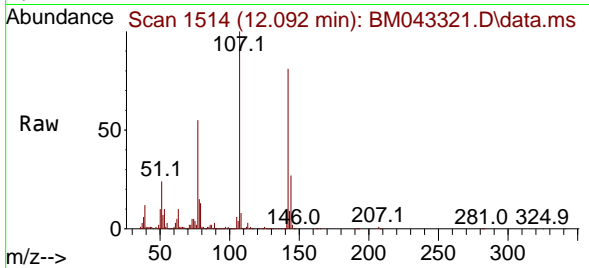
#35
 4-Chloro-3-methylphenol
 Concen: 36.715 ng/ul
 RT: 12.092 min Scan# 1514
 Delta R.T. 0.006 min
 Lab File: BM043321.D
 Acq: 14 Dec 2023 03:00

Instrument :

BNA_M

ClientSampleId :

SLCS638



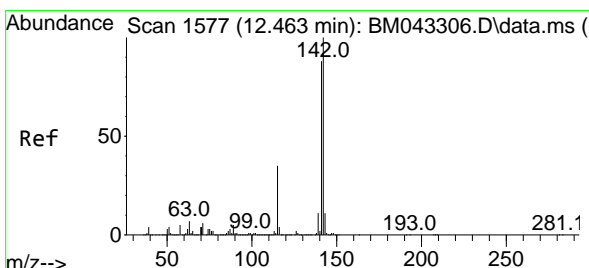
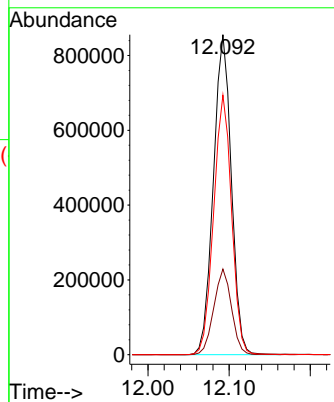
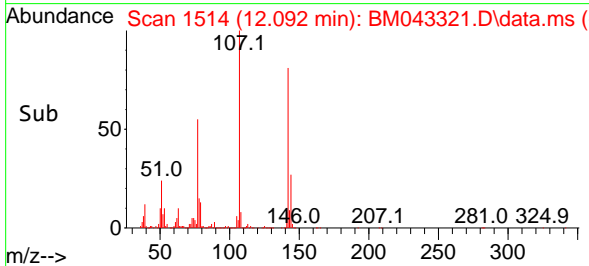
Tgt Ion:107 Resp: 131604
 Ion Ratio Lower Upper
 107 100
 144 26.8 22.0 33.0
 142 81.1 67.3 100.9

Manual Integrations

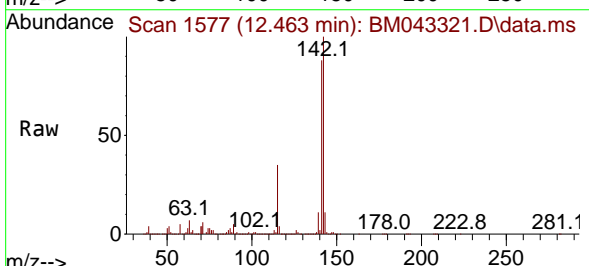
APPROVED

Reviewed By :Yogesh Patel 12/14/2023

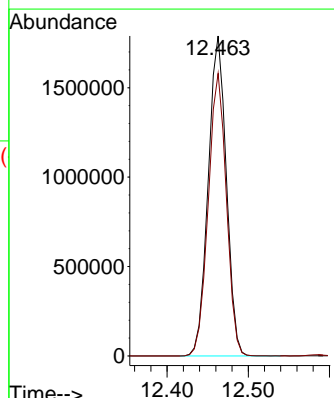
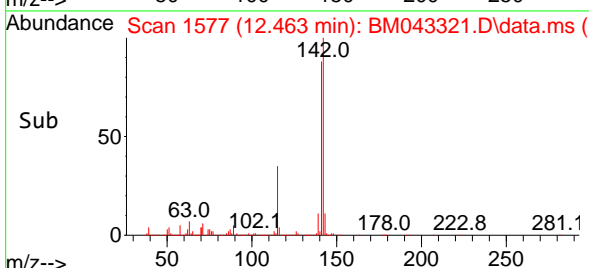
Supervised By :mohammad ahmed 12/15/2023

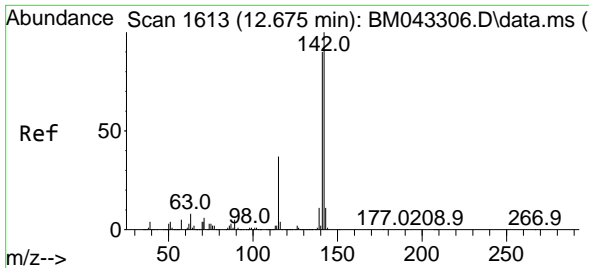


#36
 2-Methylnaphthalene
 Concen: 32.699 ng/ul
 RT: 12.463 min Scan# 1577
 Delta R.T. 0.000 min
 Lab File: BM043321.D
 Acq: 14 Dec 2023 03:00



Tgt Ion:142 Resp: 2772210
 Ion Ratio Lower Upper
 142 100
 141 88.3 70.0 105.0





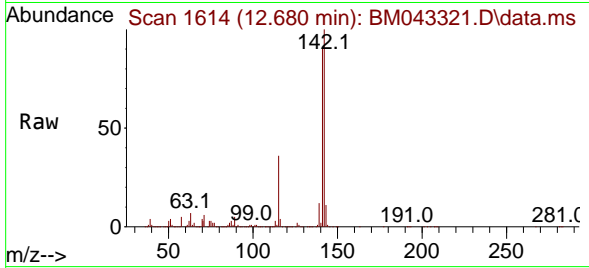
#37
 1-Methylnaphthalene
 Concen: 31.817 ng/ul
 RT: 12.680 min Scan# 1614
 Delta R.T. 0.006 min
 Lab File: BM043321.D
 Acq: 14 Dec 2023 03:00

Instrument :

BNA_M

ClientSampleId :

SLCS638



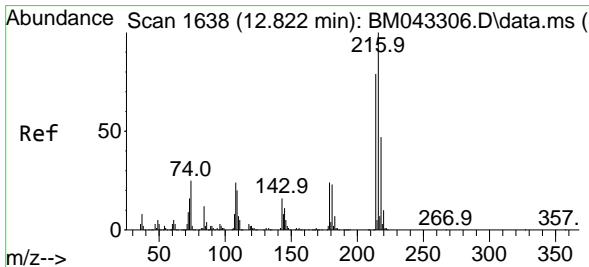
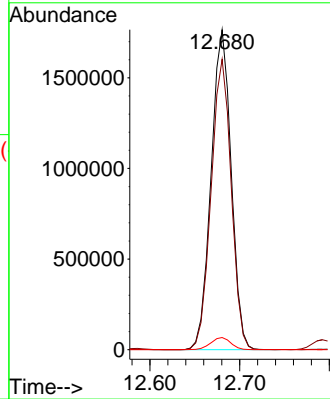
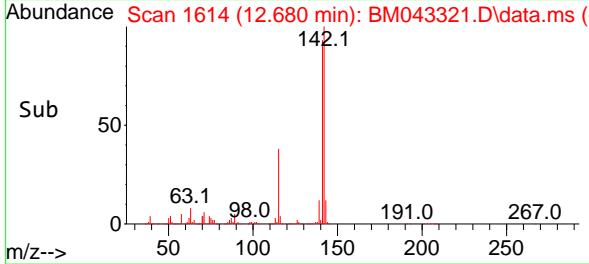
Tgt Ion:142 Resp: 2737928
 Ion Ratio Lower Upper
 142 100
 141 90.8 71.9 107.9
 116 3.8 2.8 4.2

Manual Integrations

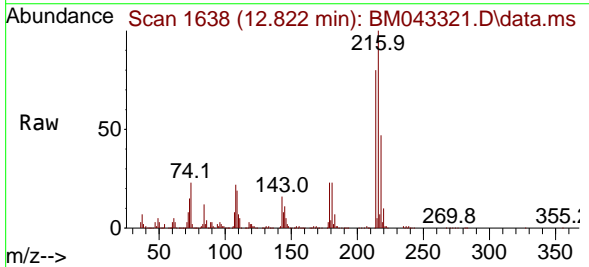
APPROVED

Reviewed By :Yogesh Patel 12/14/2023

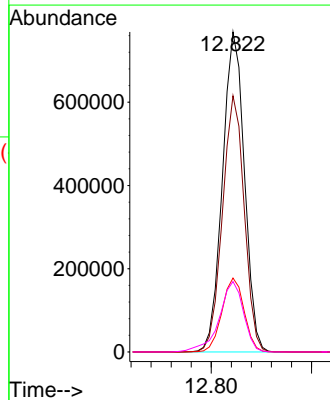
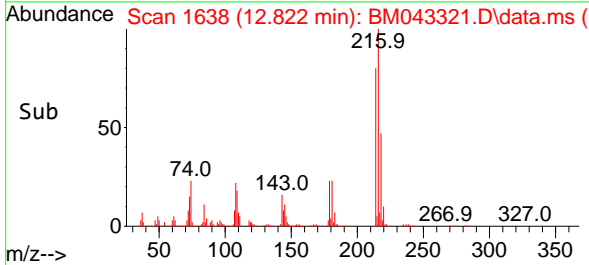
Supervised By :mohammad ahmed 12/15/2023

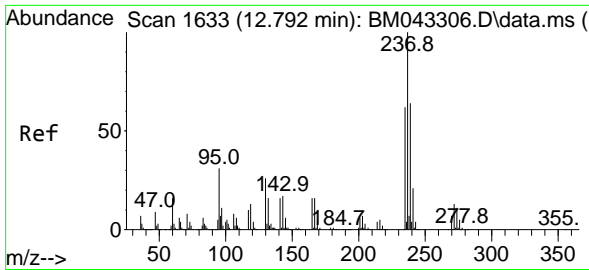


#39
 1,2,4,5-Tetrachlorobenzene
 Concen: 31.474 ng/ul
 RT: 12.822 min Scan# 1638
 Delta R.T. 0.000 min
 Lab File: BM043321.D
 Acq: 14 Dec 2023 03:00



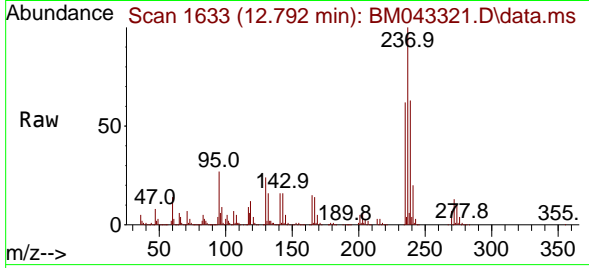
Tgt Ion:216 Resp: 1165421
 Ion Ratio Lower Upper
 216 100
 214 80.0 63.1 94.7
 179 23.1 16.4 24.6
 108 22.0 13.6 20.4#





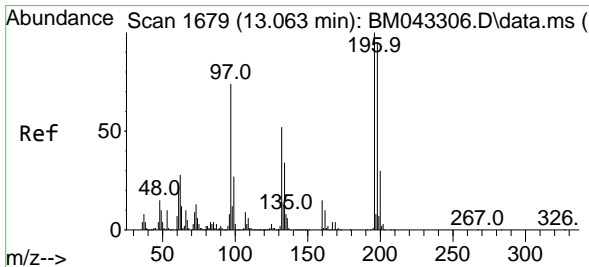
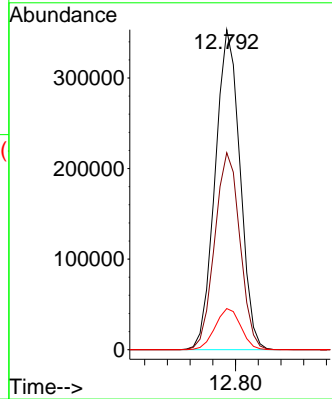
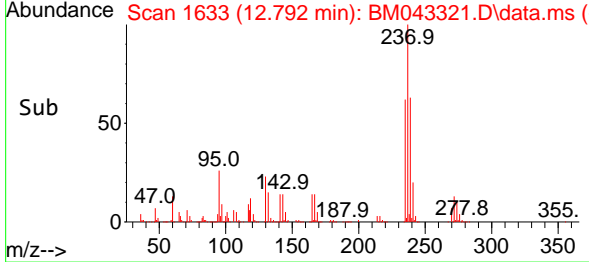
#40
 Hexachlorocyclopentadiene
 Concen: 25.555 ng/ul
 RT: 12.792 min Scan# 1633
 Delta R.T. 0.000 min
 Lab File: BM043321.D
 Acq: 14 Dec 2023 03:00

Instrument : BNA_M
 ClientSampleId : SLCS638

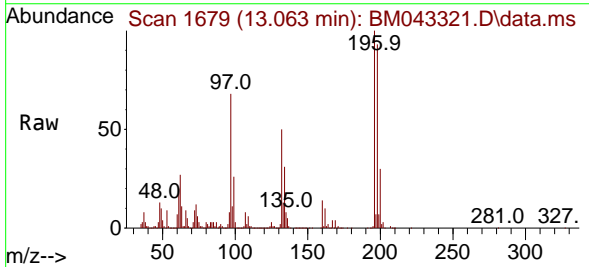


Tgt Ion:237 Resp: 53692
 Ion Ratio Lower Upper
 237 100
 235 61.5 50.5 75.7
 272 12.8 10.6 16.0

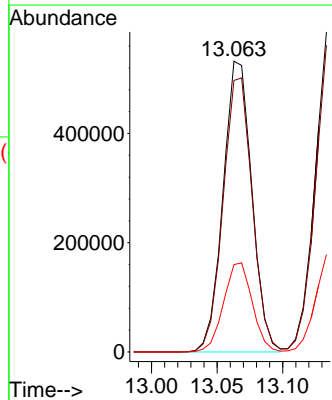
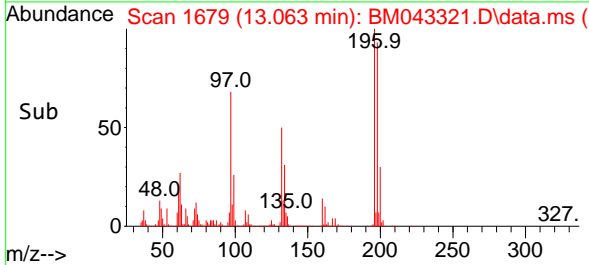
Manual Integrations
APPROVED
 Reviewed By :Yogesh Patel 12/14/2023
 Supervised By :mohammad ahmed 12/15/2023

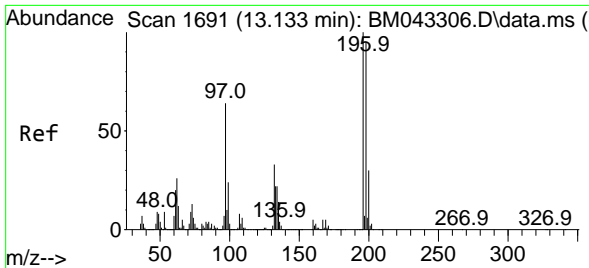


#41
 2,4,6-Trichlorophenol
 Concen: 35.354 ng/ul
 RT: 13.063 min Scan# 1679
 Delta R.T. 0.000 min
 Lab File: BM043321.D
 Acq: 14 Dec 2023 03:00



Tgt Ion:196 Resp: 814592
 Ion Ratio Lower Upper
 196 100
 198 93.4 77.0 115.4
 200 30.1 25.0 37.4





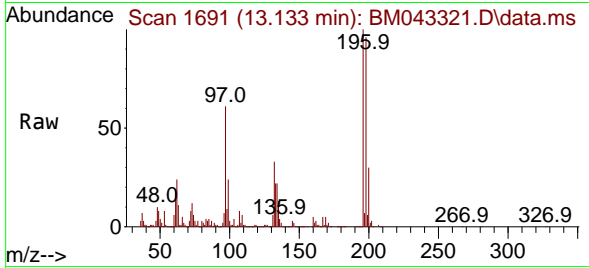
#42
 2,4,5-Trichlorophenol
 Concen: 35.486 ng/ul
 RT: 13.133 min Scan# 1691
 Delta R.T. 0.000 min
 Lab File: BM043321.D
 Acq: 14 Dec 2023 03:00

Instrument :

BNA_M

ClientSampleId :

SLCS638



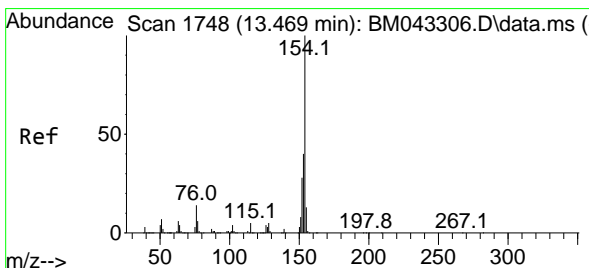
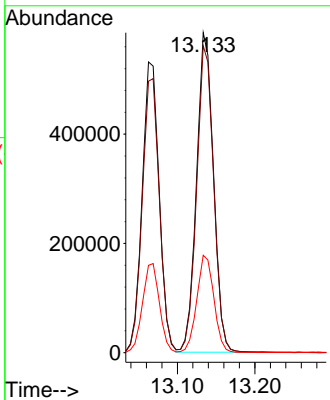
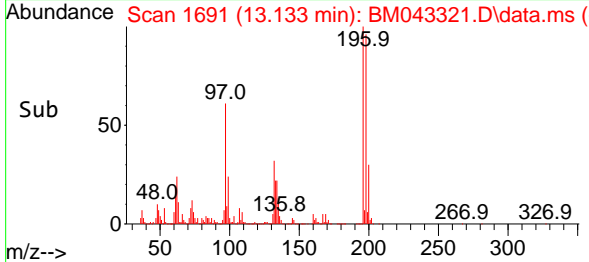
Tgt Ion:196 Resp: 88989
 Ion Ratio Lower Upper
 196 100
 198 95.9 76.1 114.1
 200 30.5 24.6 36.8

Manual Integrations

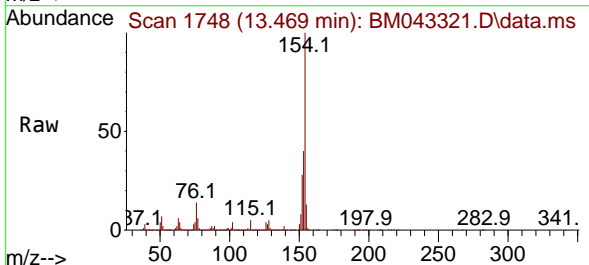
APPROVED

Reviewed By :Yogesh Patel 12/14/2023

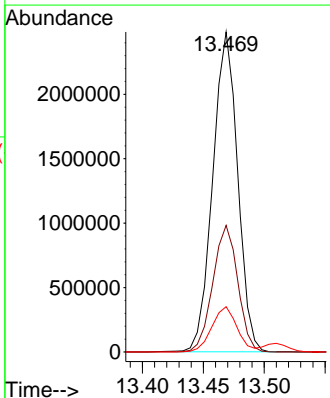
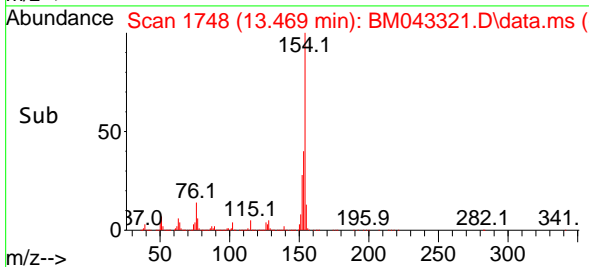
Supervised By :mohammad ahmed 12/15/2023

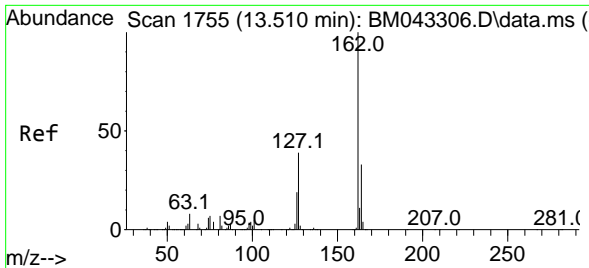


#43
 1,1'-Biphenyl
 Concen: 36.402 ng/ul
 RT: 13.469 min Scan# 1748
 Delta R.T. 0.000 min
 Lab File: BM043321.D
 Acq: 14 Dec 2023 03:00



Tgt Ion:154 Resp: 3524347
 Ion Ratio Lower Upper
 154 100
 153 39.6 31.8 47.6
 76 14.2 9.3 13.9#





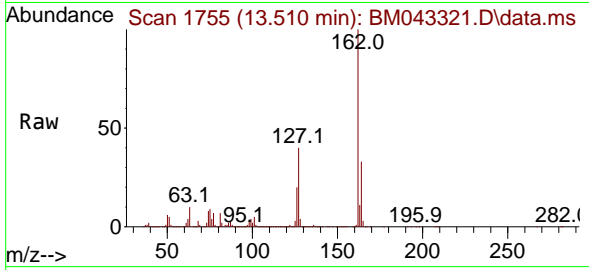
#44
 2-Chloronaphthalene
 Concen: 36.207 ng/ul
 RT: 13.510 min Scan# 1755
 Delta R.T. 0.000 min
 Lab File: BM043321.D
 Acq: 14 Dec 2023 03:00

Instrument :

BNA_M

ClientSampleId :

SLCS638



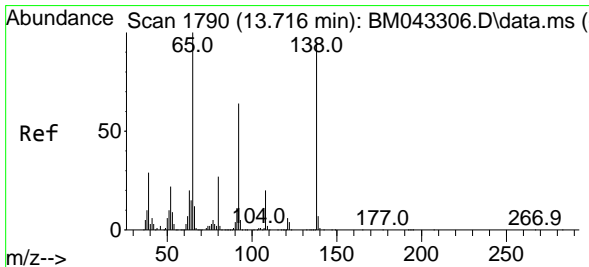
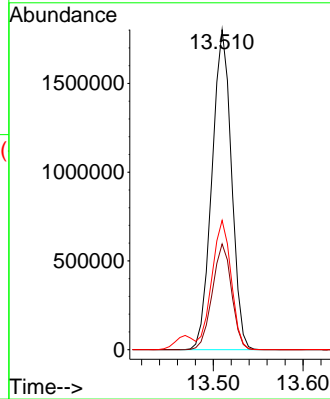
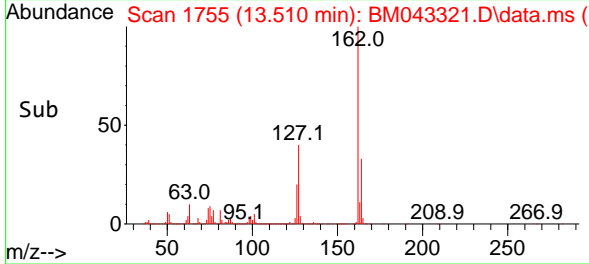
Tgt Ion:162 Resp: 271730
 Ion Ratio Lower Upper
 162 100
 164 33.0 26.4 39.6
 127 40.4 30.0 45.0

Manual Integrations

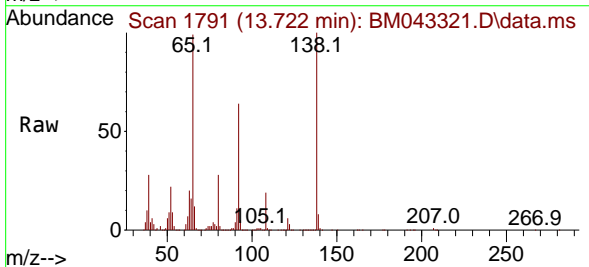
APPROVED

Reviewed By :Yogesh Patel 12/14/2023

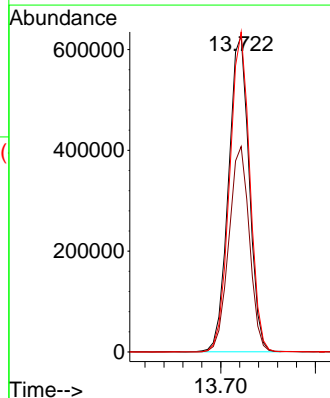
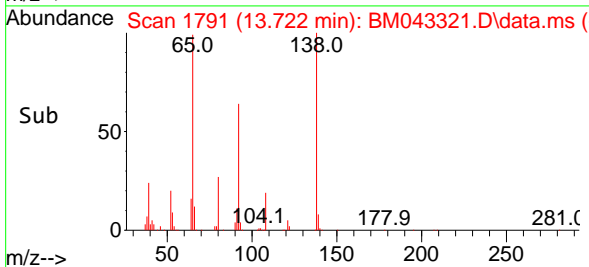
Supervised By :mohammad ahmed 12/15/2023

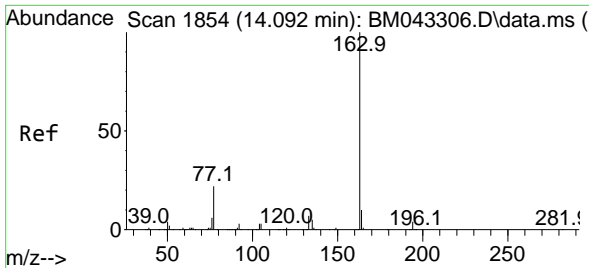


#45
 2-Nitroaniline
 Concen: 47.771 ng/ul
 RT: 13.722 min Scan# 1791
 Delta R.T. 0.006 min
 Lab File: BM043321.D
 Acq: 14 Dec 2023 03:00



Tgt Ion: 65 Resp: 947387
 Ion Ratio Lower Upper
 65 100
 92 65.0 53.4 80.0
 138 101.2 86.2 129.2





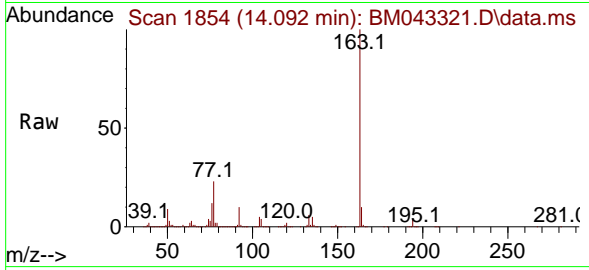
#47
 Dimethylphthalate
 Concen: 35.300 ng/ul
 RT: 14.092 min Scan# 1854
 Delta R.T. 0.000 min
 Lab File: BM043321.D
 Acq: 14 Dec 2023 03:00

Instrument :

BNA_M

ClientSampleId :

SLCS638



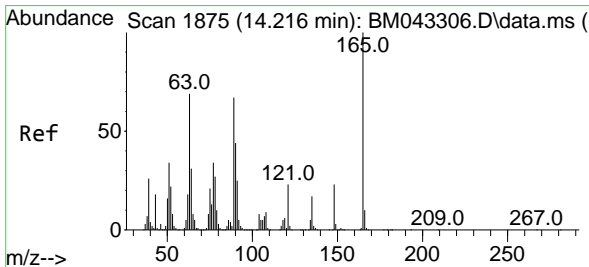
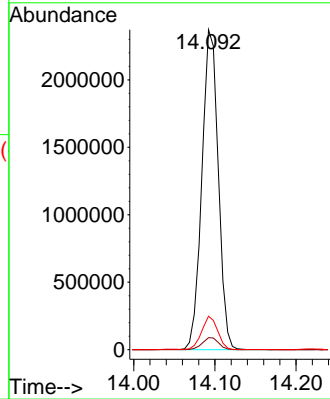
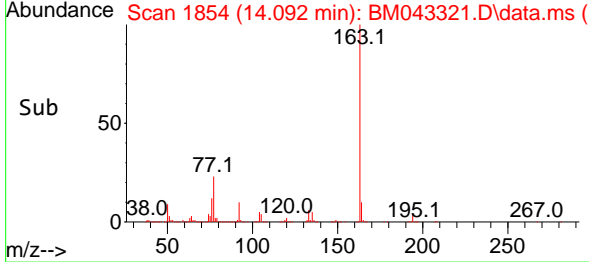
Tgt Ion:163 Resp: 332161
 Ion Ratio Lower Upper
 163 100
 194 3.8 3.3 4.9
 164 10.5 7.9 11.9

Manual Integrations

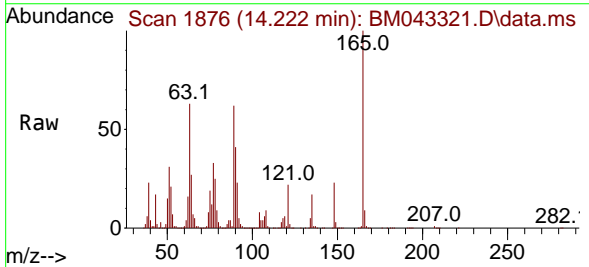
APPROVED

Reviewed By :Yogesh Patel 12/14/2023

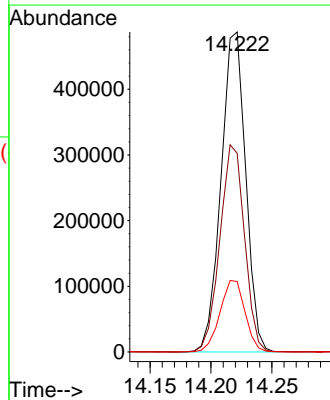
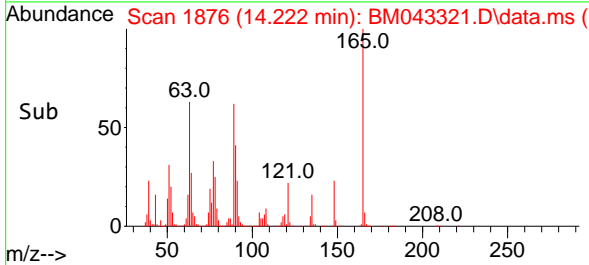
Supervised By :mohammad ahmed 12/15/2023

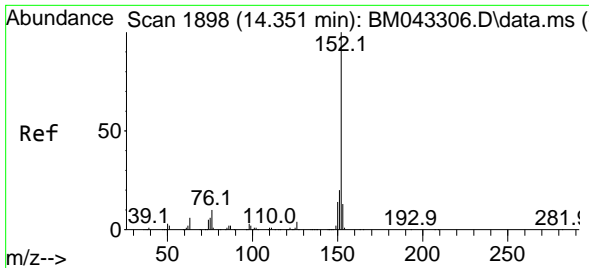


#48
 2,6-Dinitrotoluene
 Concen: 39.654 ng/ul
 RT: 14.222 min Scan# 1876
 Delta R.T. 0.006 min
 Lab File: BM043321.D
 Acq: 14 Dec 2023 03:00



Tgt Ion:165 Resp: 687460
 Ion Ratio Lower Upper
 165 100
 89 62.1 47.5 71.3
 121 22.0 17.1 25.7





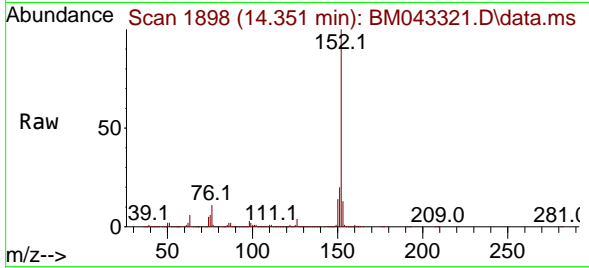
#50
 Acenaphthylene
 Concen: 36.710 ng/uI
 RT: 14.351 min Scan# 1898
 Delta R.T. 0.000 min
 Lab File: BM043321.D
 Acq: 14 Dec 2023 03:00

Instrument :

BNA_M

ClientSampleId :

SLCS638



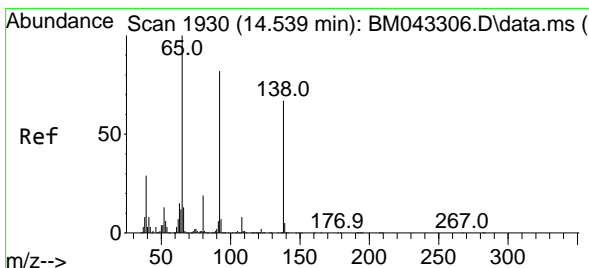
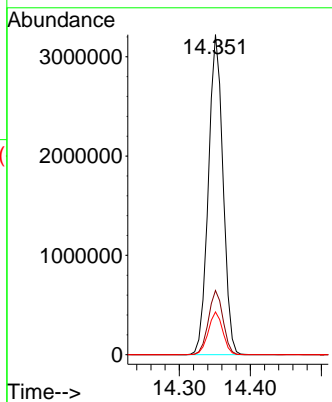
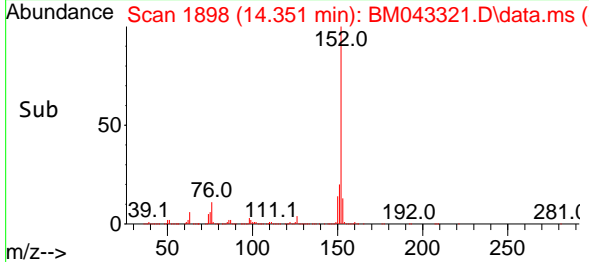
Tgt Ion:152 Resp: 4605150
 Ion Ratio Lower Upper
 152 100
 151 20.1 16.0 24.0
 153 13.3 10.3 15.5

Manual Integrations

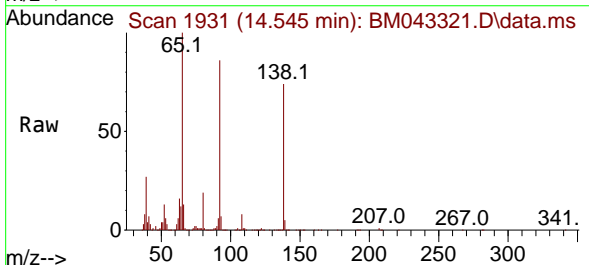
APPROVED

Reviewed By :Yogesh Patel 12/14/2023

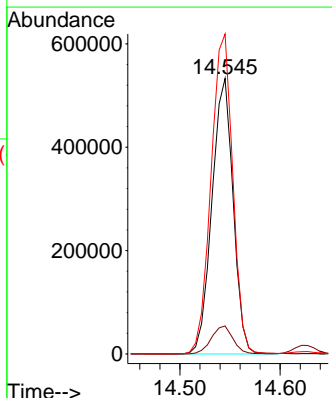
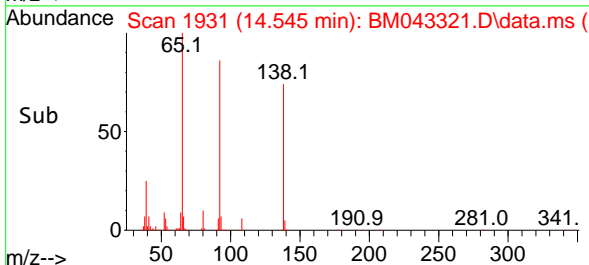
Supervised By :mohammad ahmed 12/15/2023

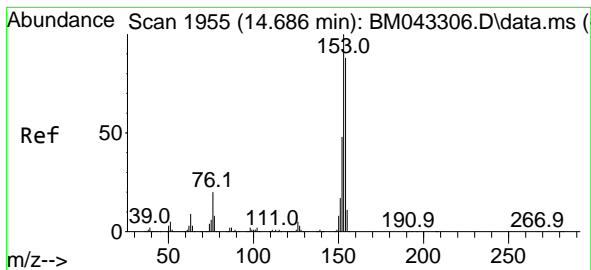


#51
 3-Nitroaniline
 Concen: 40.596 ng/uI
 RT: 14.545 min Scan# 1931
 Delta R.T. 0.006 min
 Lab File: BM043321.D
 Acq: 14 Dec 2023 03:00



Tgt Ion:138 Resp: 780800
 Ion Ratio Lower Upper
 138 100
 108 10.2 9.4 14.0
 92 116.2 87.9 131.9





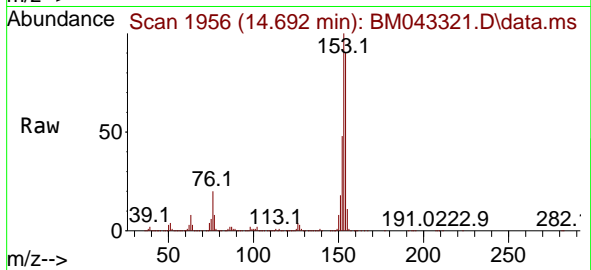
#52
 Acenaphthene
 Concen: 36.021 ng/u1
 RT: 14.692 min Scan# 1956
 Delta R.T. 0.006 min
 Lab File: BM043321.D
 Acq: 14 Dec 2023 03:00

Instrument :

BNA_M

ClientSampleId :

SLCS638



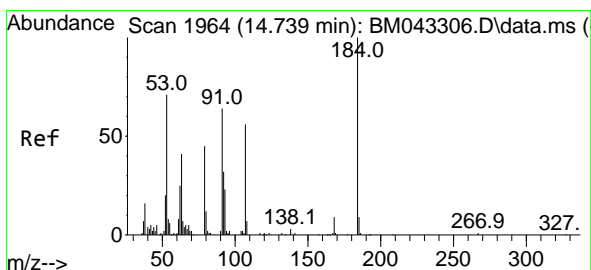
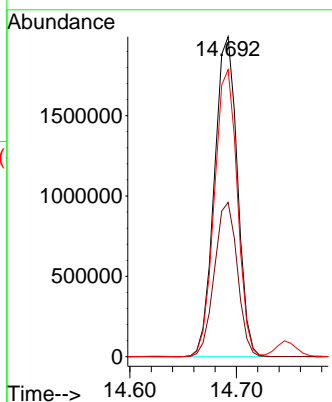
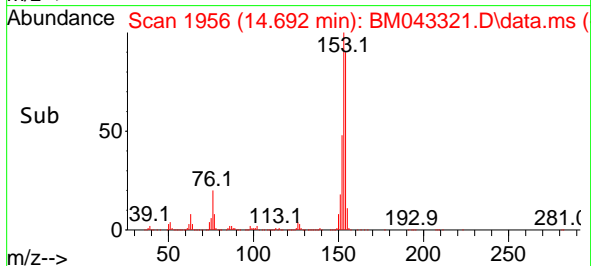
Tgt Ion:153 Resp: 2980580
 Ion Ratio Lower Upper
 153 100
 152 48.2 38.6 58.0
 154 89.7 71.6 107.4

Manual Integrations

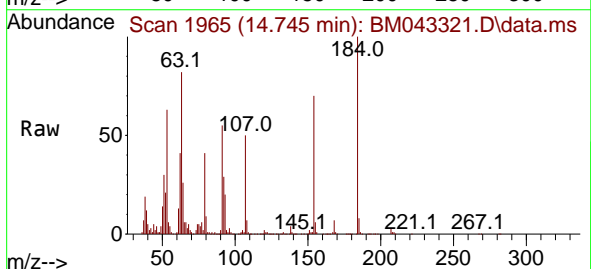
APPROVED

Reviewed By :Yogesh Patel 12/14/2023

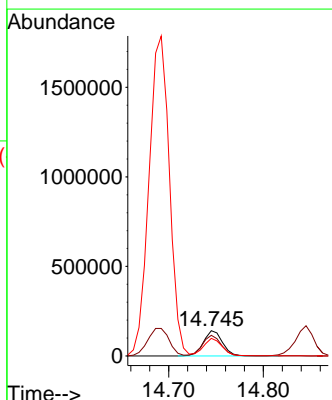
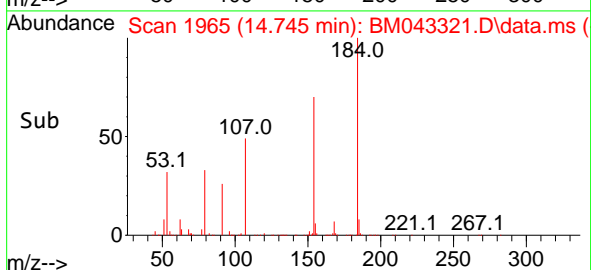
Supervised By :mohammad ahmed 12/15/2023

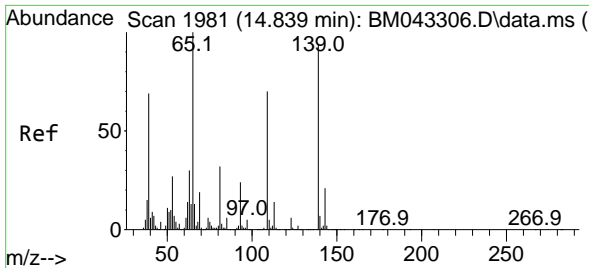


#53
 2,4-Dinitrophenol
 Concen: 24.817 ng/u1
 RT: 14.745 min Scan# 1965
 Delta R.T. 0.006 min
 Lab File: BM043321.D
 Acq: 14 Dec 2023 03:00



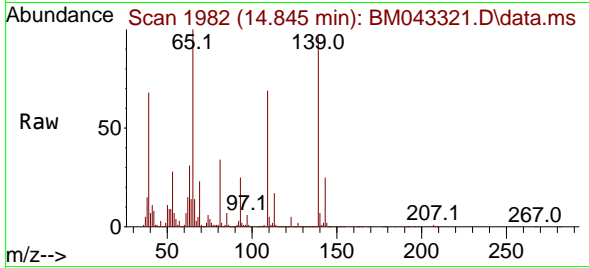
Tgt Ion:184 Resp: 197512
 Ion Ratio Lower Upper
 184 100
 63 81.5 52.2 78.4#
 154 69.6 47.8 71.8





#55
 4-Nitrophenol
 Concen: 40.900 ng/u1
 RT: 14.845 min Scan# 1981
 Delta R.T. 0.006 min
 Lab File: BM043321.D
 Acq: 14 Dec 2023 03:00

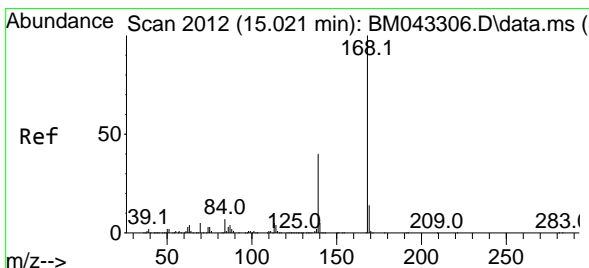
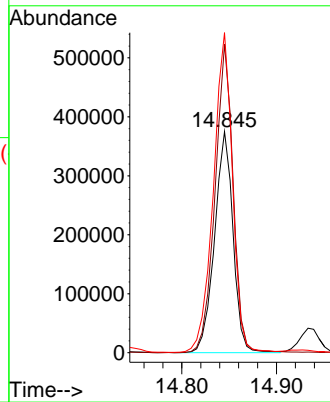
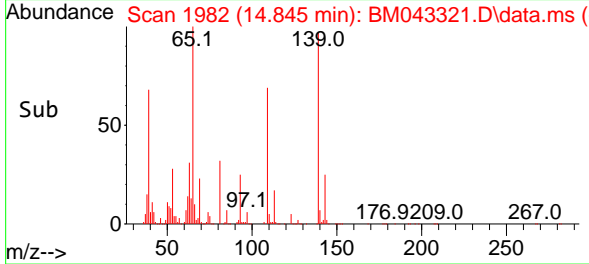
Instrument :
 BNA_M
 ClientSampleId :
 SLCS638



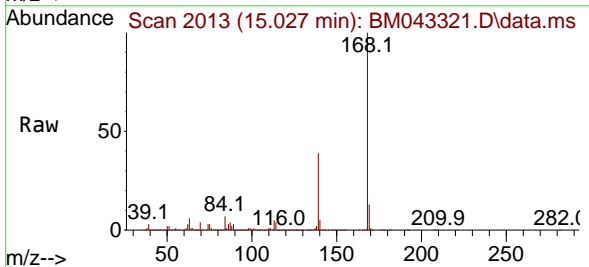
Tgt Ion:109 Resp: 50841
 Ion Ratio Lower Upper
 109 100
 139 139.7 114.7 172.1
 65 144.8 109.5 164.3

Manual Integrations
 APPROVED

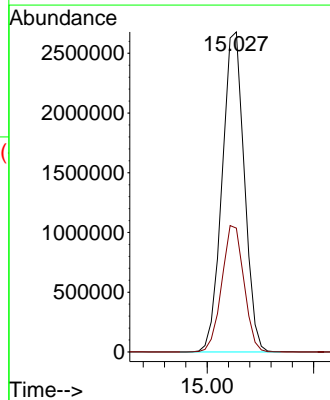
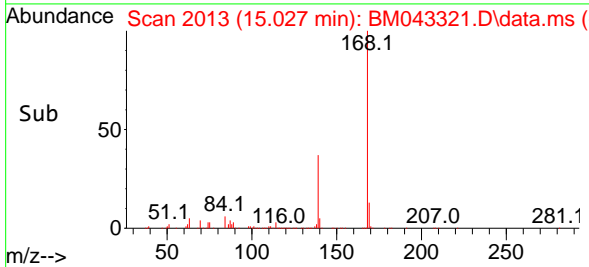
Reviewed By :Yogesh Patel 12/14/2023
 Supervised By :mohammad ahmed 12/15/2023

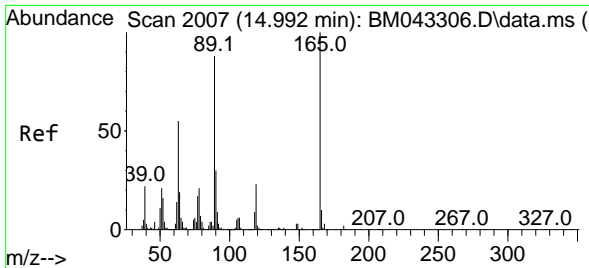


#56
 Dibenzofuran
 Concen: 34.234 ng/u1
 RT: 15.027 min Scan# 2013
 Delta R.T. 0.006 min
 Lab File: BM043321.D
 Acq: 14 Dec 2023 03:00



Tgt Ion:168 Resp: 3869495
 Ion Ratio Lower Upper
 168 100
 139 38.7 28.6 43.0





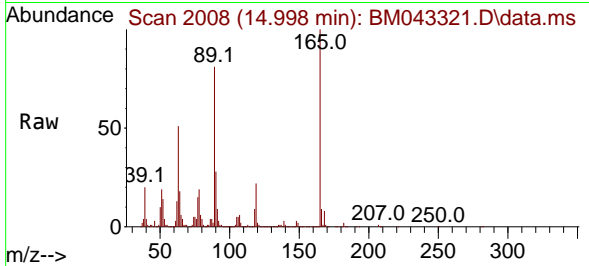
#57
 2,4-Dinitrotoluene
 Concen: 39.462 ng/ul
 RT: 14.998 min Scan# 2008
 Delta R.T. 0.006 min
 Lab File: BM043321.D
 Acq: 14 Dec 2023 03:00

Instrument :

BNA_M

Client SampleId :

SLCS638



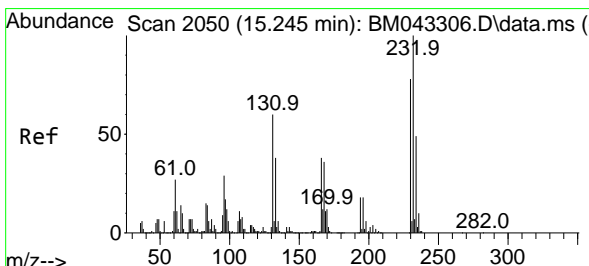
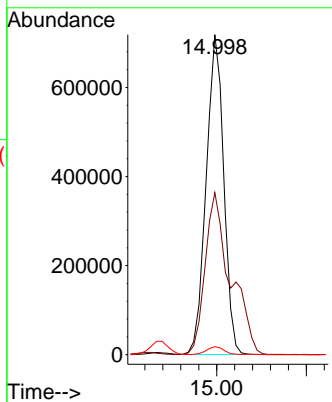
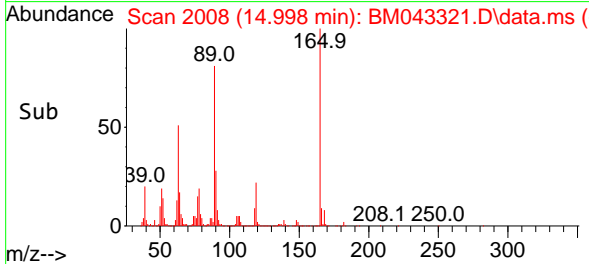
Tgt Ion:165 Resp: 976804
 Ion Ratio Lower Upper
 165 100
 63 50.7 34.6 52.0
 182 2.5 2.1 3.1

Manual Integrations

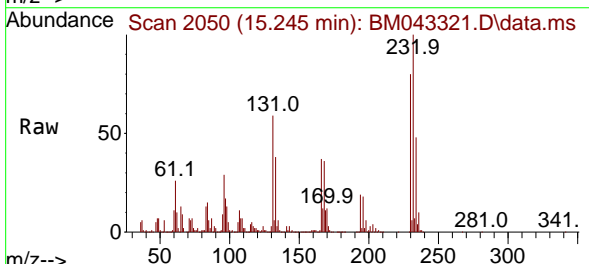
APPROVED

Reviewed By :Yogesh Patel 12/14/2023

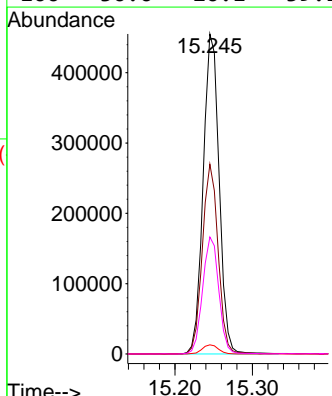
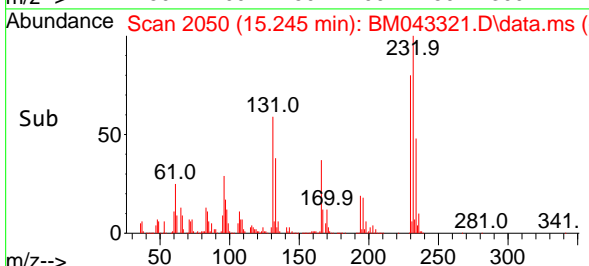
Supervised By :mohammad ahmed 12/15/2023

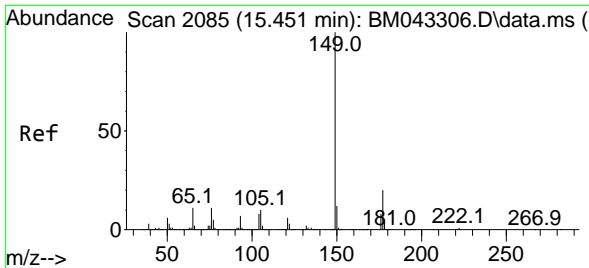


#58
 2,3,4,6-Tetrachlorophenol
 Concen: 31.246 ng/ul
 RT: 15.245 min Scan# 2050
 Delta R.T. 0.000 min
 Lab File: BM043321.D
 Acq: 14 Dec 2023 03:00



Tgt Ion:232 Resp: 651298
 Ion Ratio Lower Upper
 232 100
 131 59.3 37.0 55.4#
 130 2.8 1.9 2.9
 166 36.6 26.1 39.1





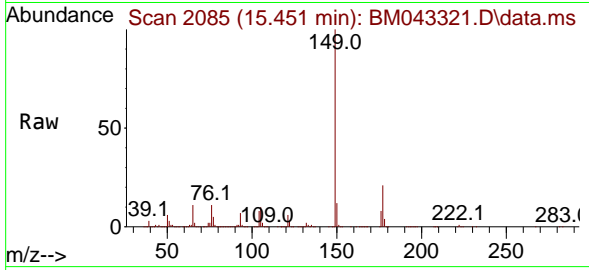
#59
 Diethylphthalate
 Concen: 37.079 ng/u1
 RT: 15.451 min Scan# 2085
 Delta R.T. 0.000 min
 Lab File: BM043321.D
 Acq: 14 Dec 2023 03:00

Instrument :

BNA_M

ClientSampleId :

SLCS638



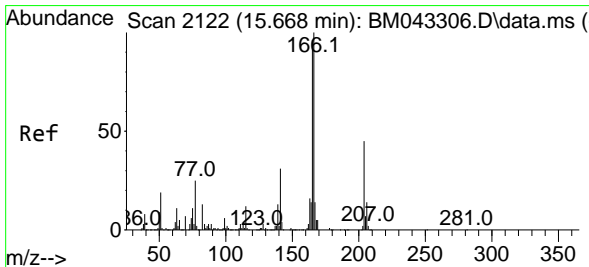
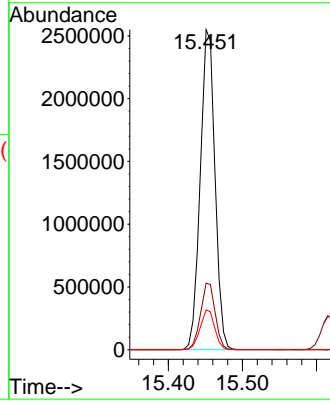
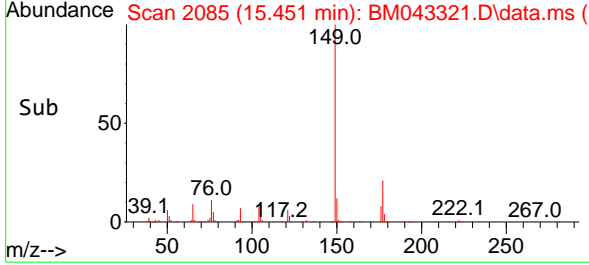
Tgt Ion:149 Resp: 350944
 Ion Ratio Lower Upper
 149 100
 177 20.8 18.2 27.2
 150 12.5 10.0 15.0

Manual Integrations

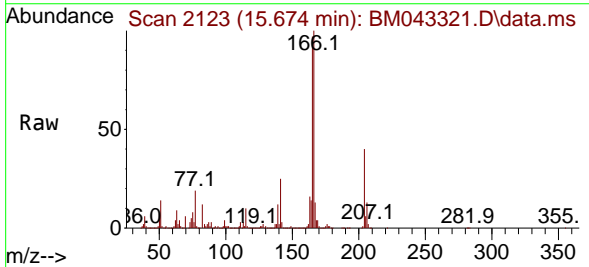
APPROVED

Reviewed By :Yogesh Patel 12/14/2023

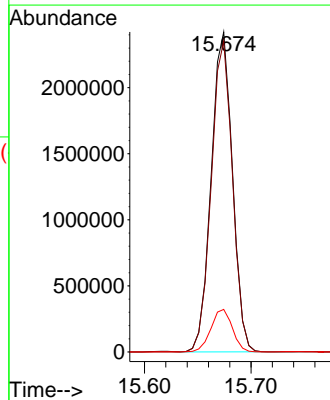
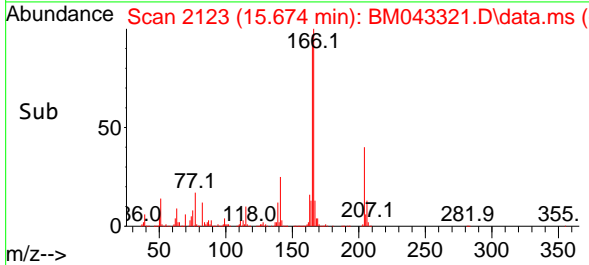
Supervised By :mohammad ahmed 12/15/2023

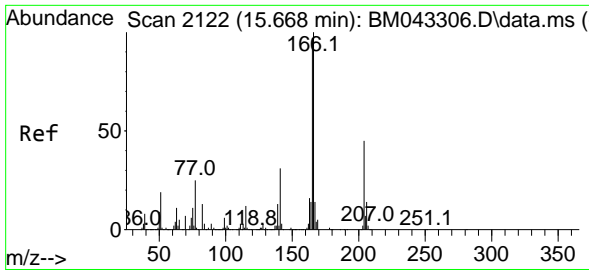


#61
 Fluorene
 Concen: 34.315 ng/u1
 RT: 15.674 min Scan# 2123
 Delta R.T. 0.006 min
 Lab File: BM043321.D
 Acq: 14 Dec 2023 03:00



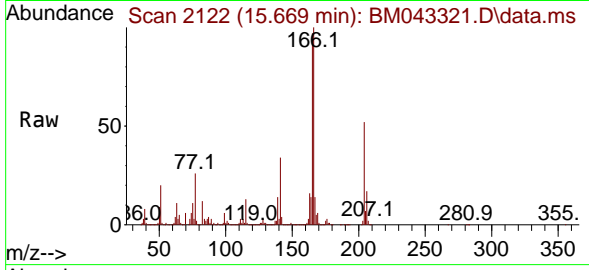
Tgt Ion:166 Resp: 3357571
 Ion Ratio Lower Upper
 166 100
 165 97.2 77.5 116.3
 167 13.3 10.7 16.1





#62
 4-Chlorophenyl-phenylether
 Concen: 30.893 ng/ul
 RT: 15.669 min Scan# 2122
 Delta R.T. 0.000 min
 Lab File: BM043321.D
 Acq: 14 Dec 2023 03:00

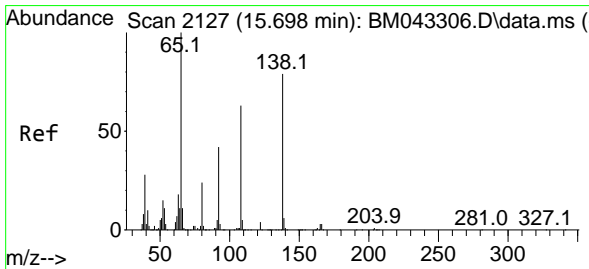
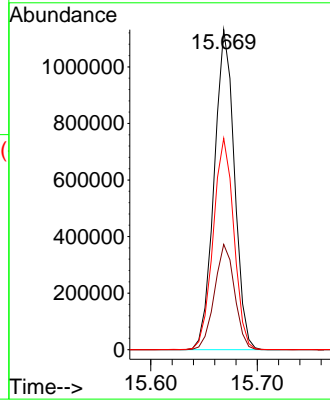
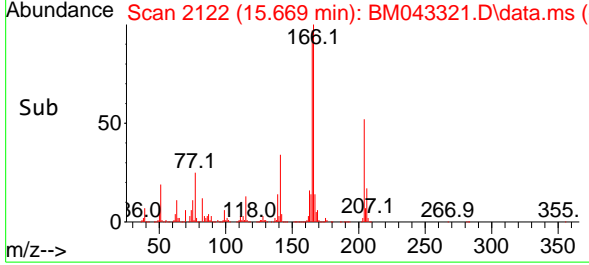
Instrument :
 BNA_M
 ClientSampleId :
 SLCS638



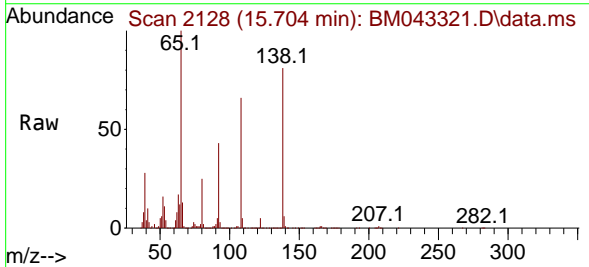
Tgt Ion:204 Resp: 149333
 Ion Ratio Lower Upper
 204 100
 206 32.9 26.2 39.2
 141 66.1 44.2 66.4

Manual Integrations
 APPROVED

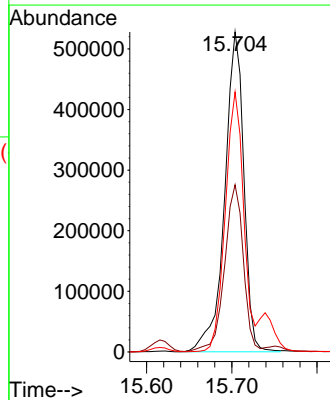
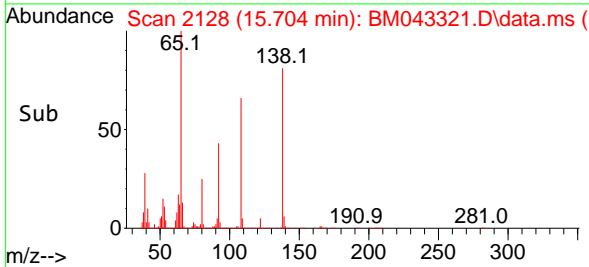
Reviewed By :Yogesh Patel 12/14/2023
 Supervised By :mohammad ahmed 12/15/2023

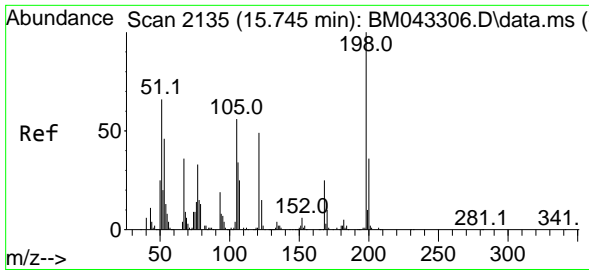


#63
 4-Nitroaniline
 Concen: 42.677 ng/ul
 RT: 15.704 min Scan# 2128
 Delta R.T. 0.006 min
 Lab File: BM043321.D
 Acq: 14 Dec 2023 03:00



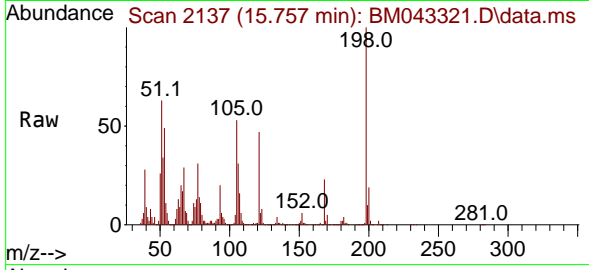
Tgt Ion:138 Resp: 824717
 Ion Ratio Lower Upper
 138 100
 92 52.2 40.1 60.1
 108 81.2 63.0 94.6





#66
 4,6-Dinitro-2-methylphenol
 Concen: 27.318 ng/ul
 RT: 15.757 min Scan# 2137
 Delta R.T. 0.012 min
 Lab File: BM043321.D
 Acq: 14 Dec 2023 03:00

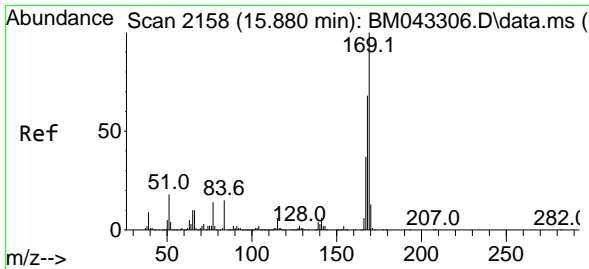
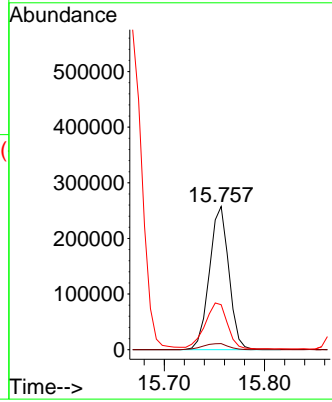
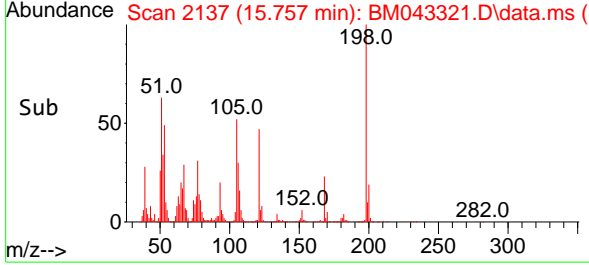
Instrument :
 BNA_M
 ClientSampleId :
 SLCS638



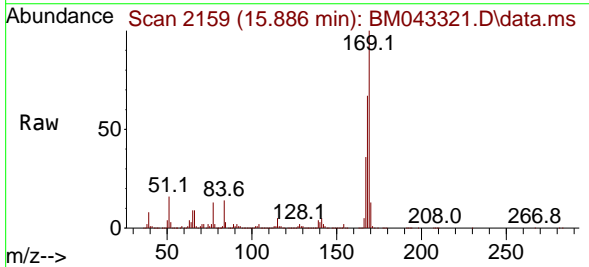
Tgt Ion:198 Resp: 346752
 Ion Ratio Lower Upper
 198 100
 182 4.2 3.2 4.8
 77 31.4 20.1 30.1

Manual Integrations
 APPROVED

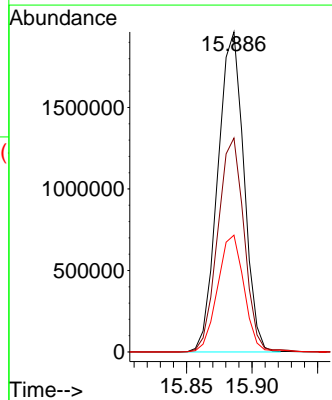
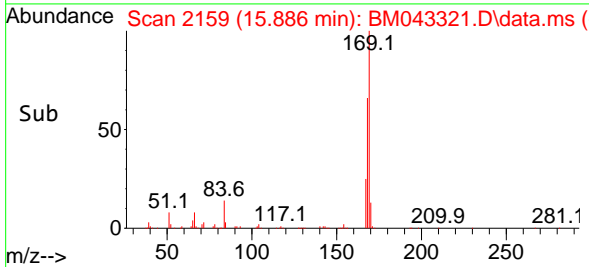
Reviewed By :Yogesh Patel 12/14/2023
 Supervised By :mohammad ahmed 12/15/2023

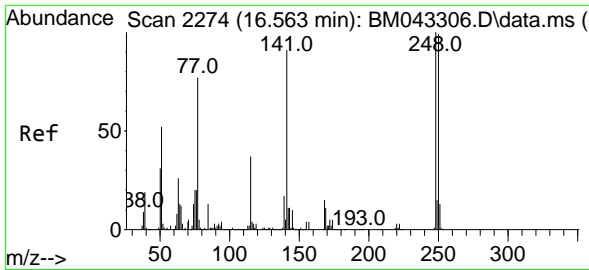


#67
 N-Nitrosodiphenylamine
 Concen: 38.407 ng/ul
 RT: 15.886 min Scan# 2159
 Delta R.T. 0.006 min
 Lab File: BM043321.D
 Acq: 14 Dec 2023 03:00



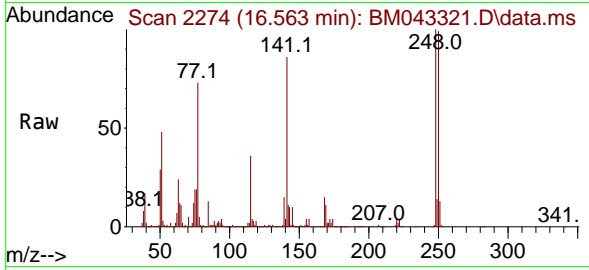
Tgt Ion:169 Resp: 2716558
 Ion Ratio Lower Upper
 169 100
 168 66.8 53.4 80.2
 167 36.5 29.4 44.0





#68
 4-Bromophenyl-phenylether
 Concen: 33.772 ng/ul
 RT: 16.563 min Scan# 2274
 Delta R.T. 0.000 min
 Lab File: BM043321.D
 Acq: 14 Dec 2023 03:00

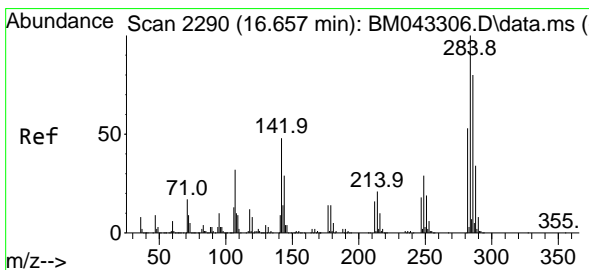
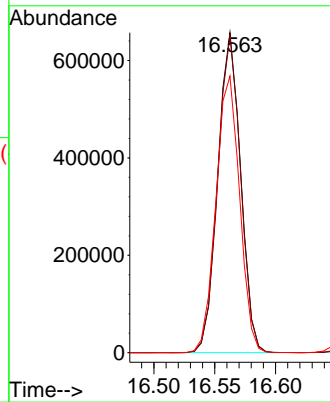
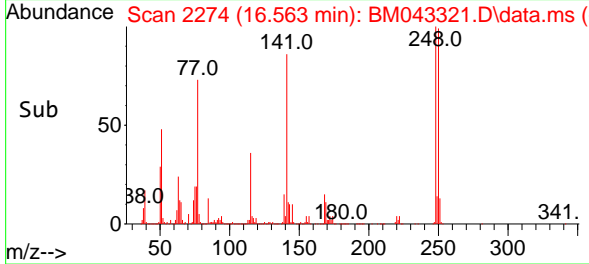
Instrument :
 BNA_M
 ClientSampleId :
 SLCS638



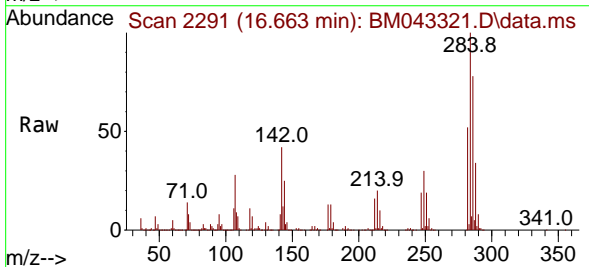
Tgt Ion:248 Resp: 861372
 Ion Ratio Lower Upper
 248 100
 250 99.2 78.9 118.3
 141 86.5 60.2 90.2

Manual Integrations
 APPROVED

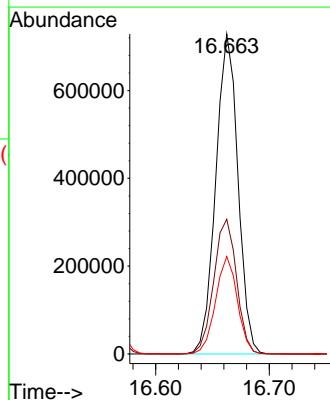
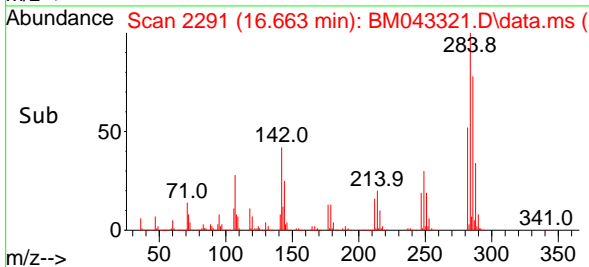
Reviewed By :Yogesh Patel 12/14/2023
 Supervised By :mohammad ahmed 12/15/2023

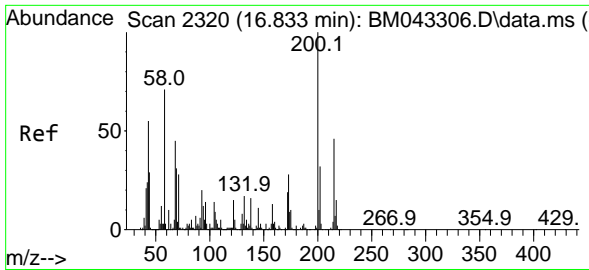


#69
 Hexachlorobenzene
 Concen: 32.712 ng/ul
 RT: 16.663 min Scan# 2291
 Delta R.T. 0.006 min
 Lab File: BM043321.D
 Acq: 14 Dec 2023 03:00



Tgt Ion:284 Resp: 989986
 Ion Ratio Lower Upper
 284 100
 142 42.1 26.7 40.1#
 249 30.4 24.0 36.0





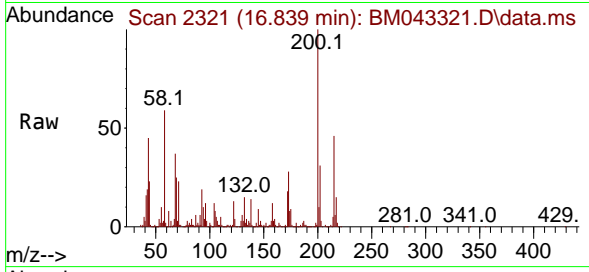
#70
 Atrazine
 Concen: 29.154 ng/uI
 RT: 16.839 min Scan# 21
 Delta R.T. 0.006 min
 Lab File: BM043321.D
 Acq: 14 Dec 2023 03:00

Instrument :

BNA_M

ClientSampleId :

SLCS638



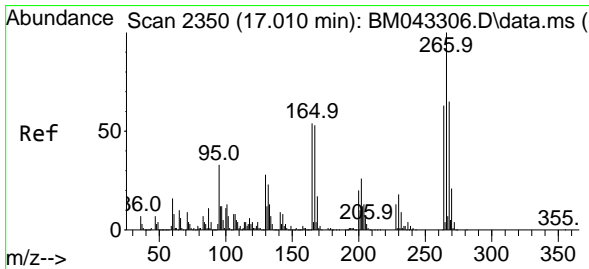
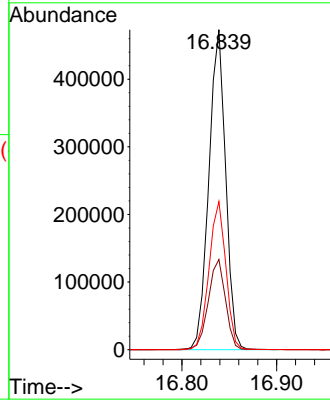
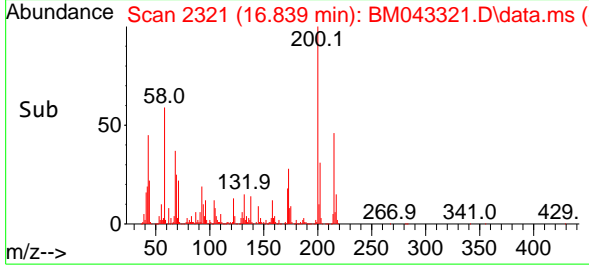
Tgt Ion:200 Resp: 581524
 Ion Ratio Lower Upper
 200 100
 173 28.2 20.6 30.8
 215 46.3 39.4 59.2

Manual Integrations

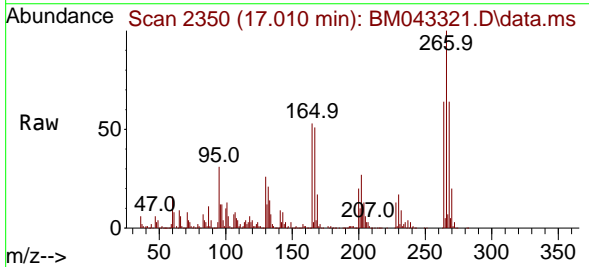
APPROVED

Reviewed By :Yogesh Patel 12/14/2023

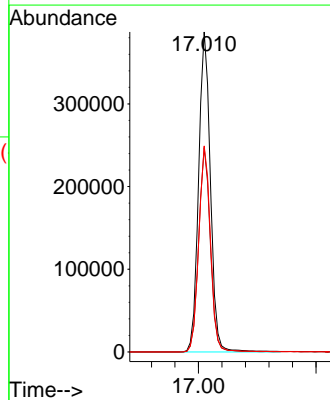
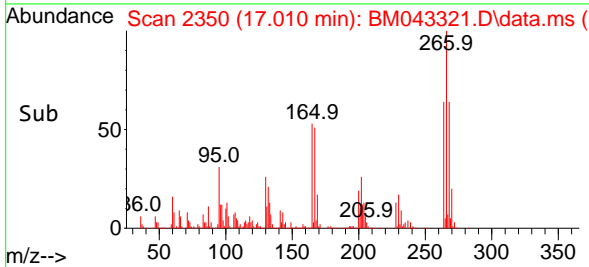
Supervised By :mohammad ahmed 12/15/2023

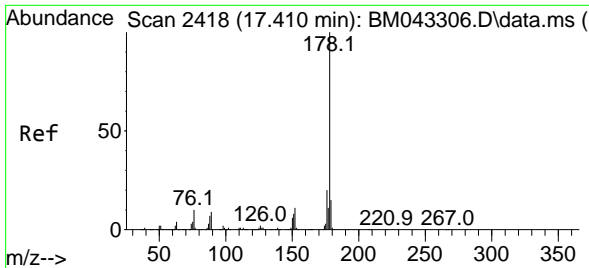


#71
 Pentachlorophenol
 Concen: 30.247 ng/uI
 RT: 17.010 min Scan# 2350
 Delta R.T. 0.000 min
 Lab File: BM043321.D
 Acq: 14 Dec 2023 03:00



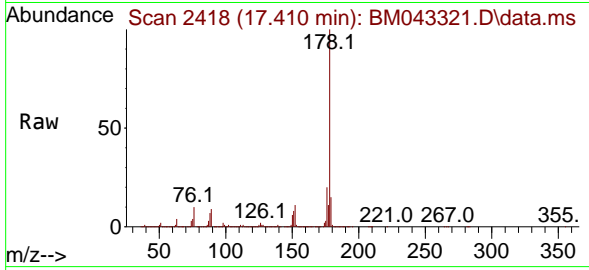
Tgt Ion:266 Resp: 539000
 Ion Ratio Lower Upper
 266 100
 264 63.9 50.5 75.7
 268 64.4 50.4 75.6





#72
 Phenanthrene
 Concen: 37.210 ng/u1
 RT: 17.410 min Scan# 2418
 Delta R.T. 0.000 min
 Lab File: BM043321.D
 Acq: 14 Dec 2023 03:00

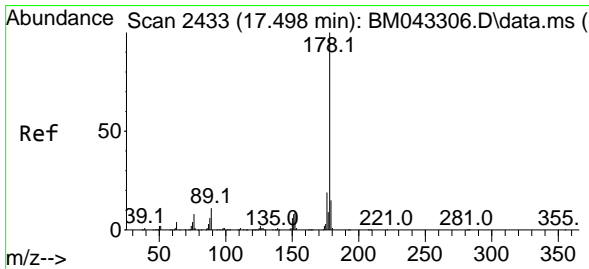
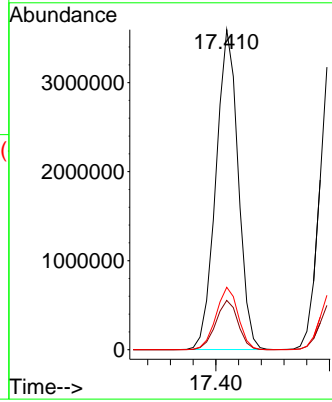
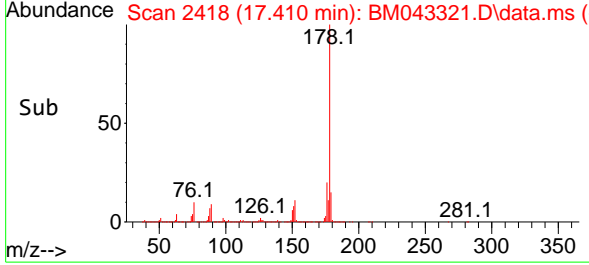
Instrument :
 BNA_M
 ClientSampleId :
 SLCS638



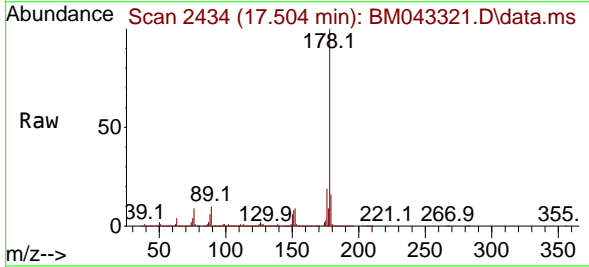
Tgt Ion:178 Resp: 489400
 Ion Ratio Lower Upper
 178 100
 179 15.4 12.2 18.2
 176 19.5 15.7 23.5

Manual Integrations
APPROVED

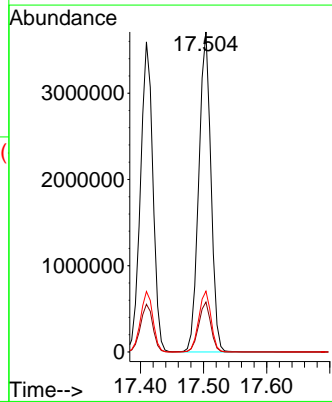
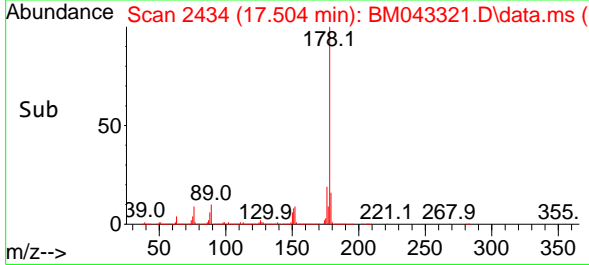
Reviewed By :Yogesh Patel 12/14/2023
 Supervised By :mohammad ahmed 12/15/2023

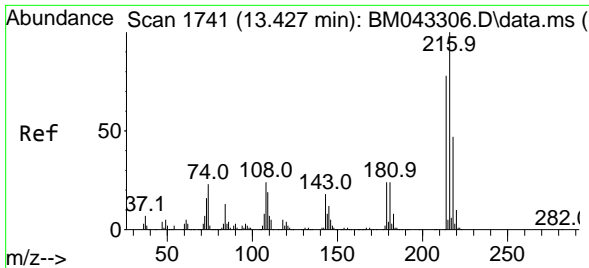


#74
 Anthracene
 Concen: 37.195 ng/u1
 RT: 17.504 min Scan# 2434
 Delta R.T. 0.006 min
 Lab File: BM043321.D
 Acq: 14 Dec 2023 03:00



Tgt Ion:178 Resp: 4927913
 Ion Ratio Lower Upper
 178 100
 179 15.6 12.1 18.1
 176 19.0 15.1 22.7





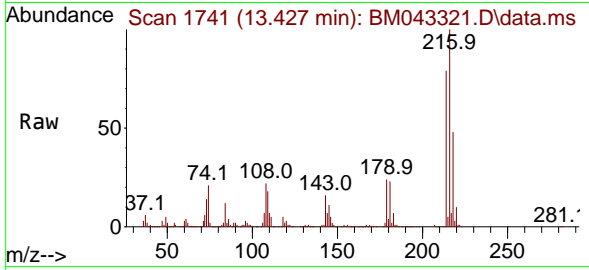
#75
 1,2,3,4-Tetrachlorobenzene
 Concen: 35.401 ng/uL
 RT: 13.427 min Scan# 11
 Delta R.T. 0.000 min
 Lab File: BM043321.D
 Acq: 14 Dec 2023 03:00

Instrument :

BNA_M

ClientSampleId :

SLCS638



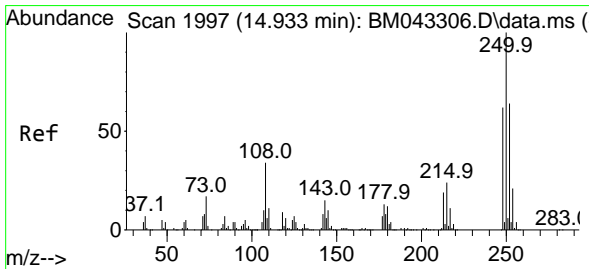
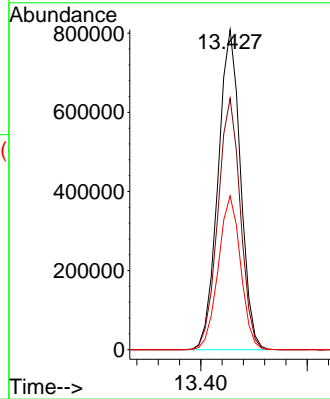
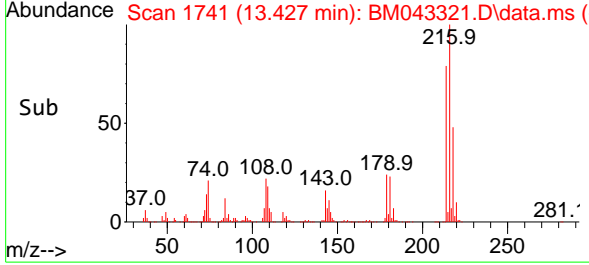
Tgt Ion:216 Resp: 118127
 Ion Ratio Lower Upper
 216 100
 214 78.5 62.2 93.2
 218 48.1 37.6 56.4

Manual Integrations

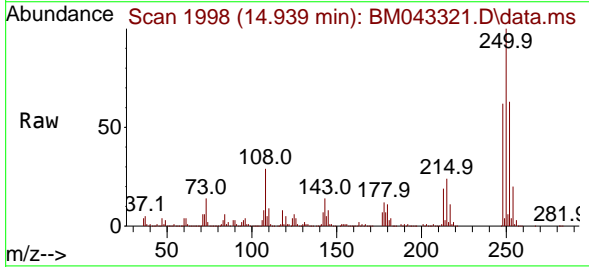
APPROVED

Reviewed By :Yogesh Patel 12/14/2023

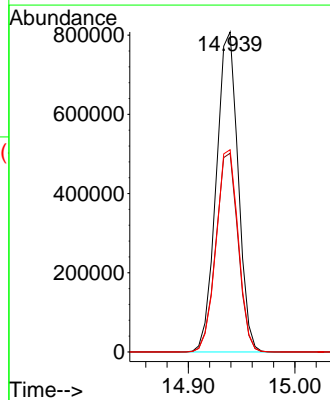
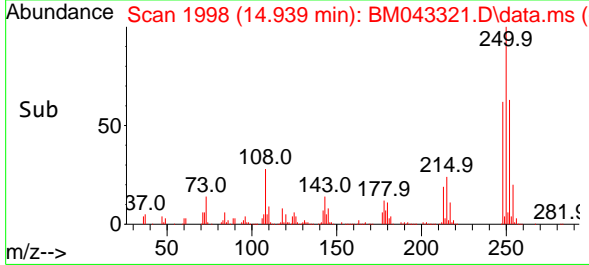
Supervised By :mohammad ahmed 12/15/2023

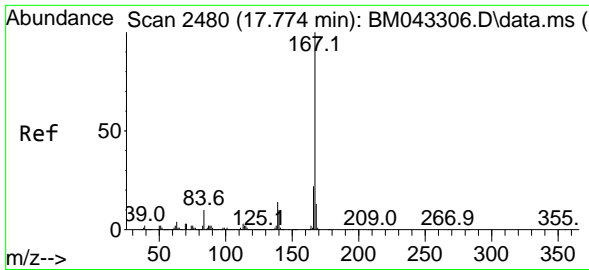


#76
 Pentachlorobenzene
 Concen: 33.901 ng/uL
 RT: 14.939 min Scan# 1998
 Delta R.T. 0.006 min
 Lab File: BM043321.D
 Acq: 14 Dec 2023 03:00



Tgt Ion:250 Resp: 1149594
 Ion Ratio Lower Upper
 250 100
 248 62.1 51.8 77.8
 252 63.2 51.9 77.9





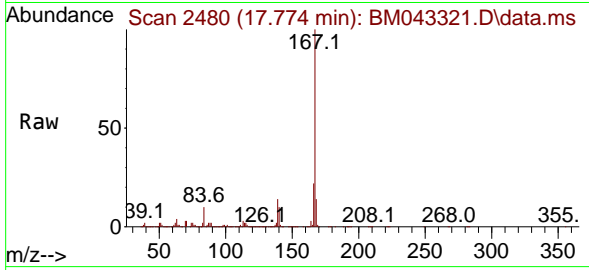
#77
 Carbazole
 Concen: 41.749 ng/u1
 RT: 17.774 min Scan# 2480
 Delta R.T. 0.000 min
 Lab File: BM043321.D
 Acq: 14 Dec 2023 03:00

Instrument :

BNA_M

ClientSampleId :

SLCS638



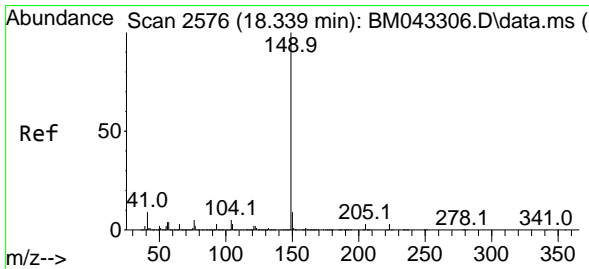
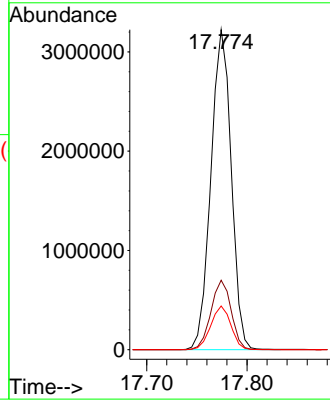
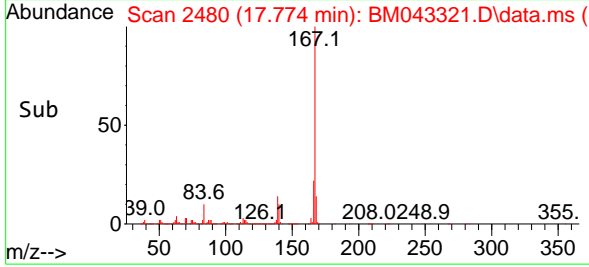
Tgt Ion:167 Resp: 454354
 Ion Ratio Lower Upper
 167 100
 166 21.7 17.1 25.7
 139 13.7 9.9 14.9

Manual Integrations

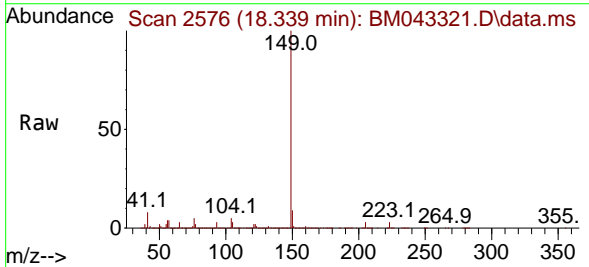
APPROVED

Reviewed By :Yogesh Patel 12/14/2023

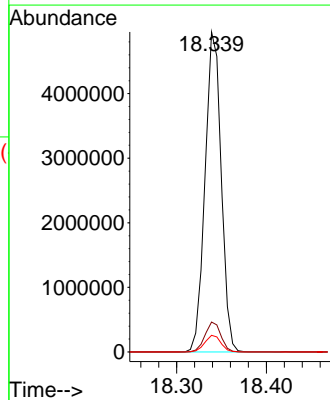
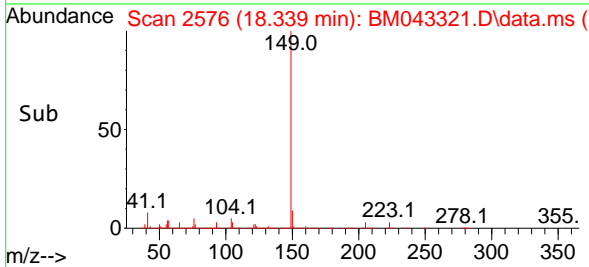
Supervised By :mohammad ahmed 12/15/2023

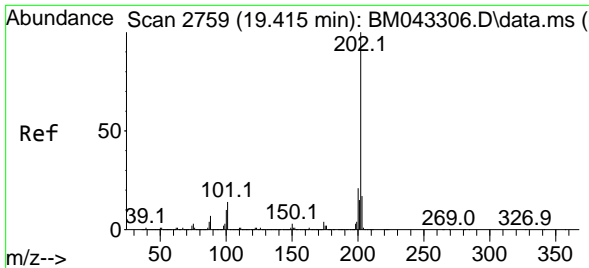


#78
 Di-n-butylphthalate
 Concen: 43.805 ng/u1
 RT: 18.339 min Scan# 2576
 Delta R.T. 0.000 min
 Lab File: BM043321.D
 Acq: 14 Dec 2023 03:00



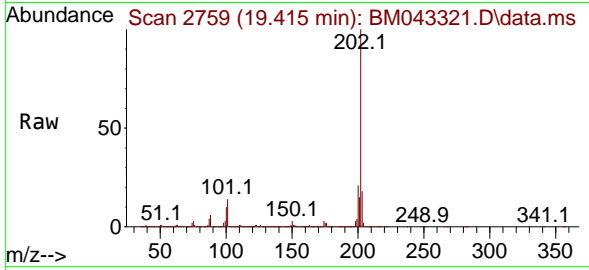
Tgt Ion:149 Resp: 6201034
 Ion Ratio Lower Upper
 149 100
 150 9.4 7.2 10.8
 104 5.2 3.8 5.6





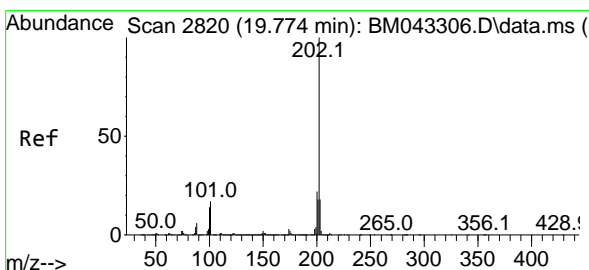
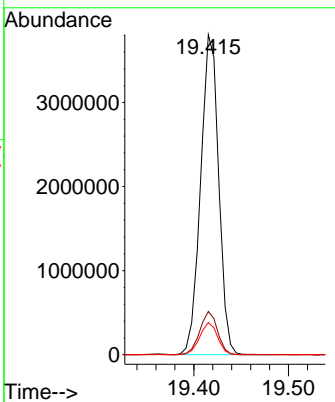
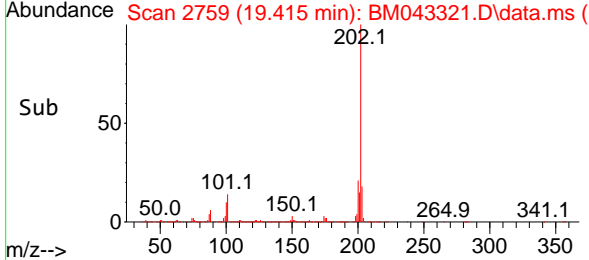
#80
 Fluoranthene
 Concen: 46.929 ng/u1
 RT: 19.415 min Scan# 21
 Delta R.T. 0.000 min
 Lab File: BM043321.D
 Acq: 14 Dec 2023 03:00

Instrument : BNA_M
 ClientSampleId : SLCS638

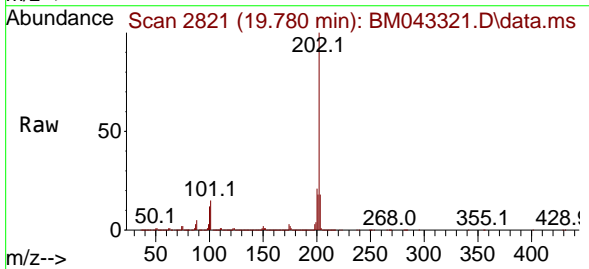


Tgt Ion:202 Resp: 503074
 Ion Ratio Lower Upper
 202 100
 101 13.5 8.2 12.2
 100 10.0 6.1 9.1

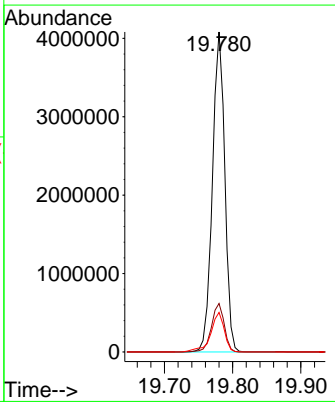
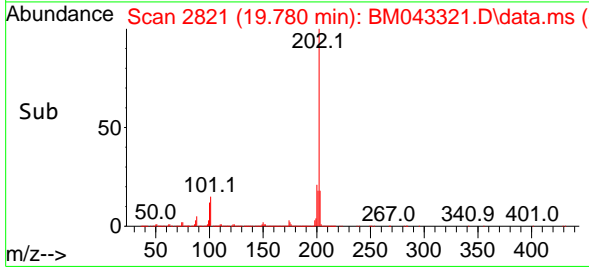
Manual Integrations
APPROVED
 Reviewed By :Yogesh Patel 12/14/2023
 Supervised By :mohammad ahmed 12/15/2023

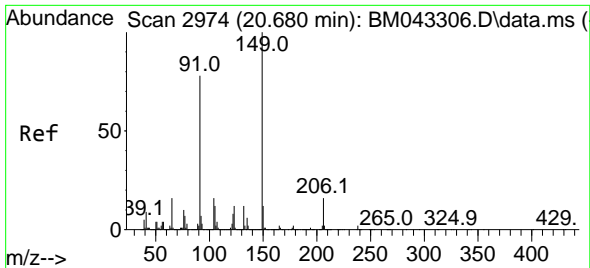


#82
 Pyrene
 Concen: 46.225 ng/u1
 RT: 19.780 min Scan# 2821
 Delta R.T. 0.006 min
 Lab File: BM043321.D
 Acq: 14 Dec 2023 03:00



Tgt Ion:202 Resp: 5154573
 Ion Ratio Lower Upper
 202 100
 101 15.1 10.2 15.2
 100 12.3 8.2 12.2





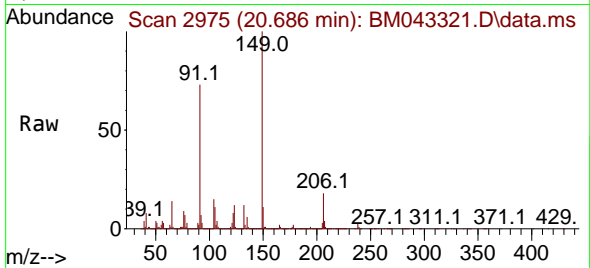
#83
 Butylbenzylphthalate
 Concen: 59.569 ng/ul
 RT: 20.686 min Scan# 2975
 Delta R.T. 0.006 min
 Lab File: BM043321.D
 Acq: 14 Dec 2023 03:00

Instrument :

BNA_M

ClientSampleId :

SLCS638

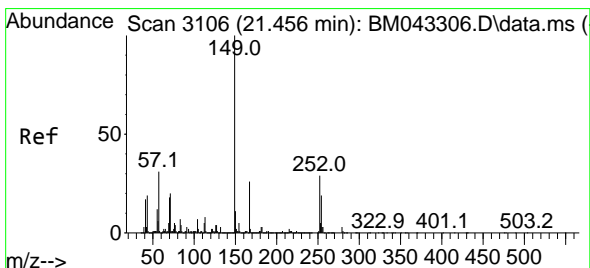
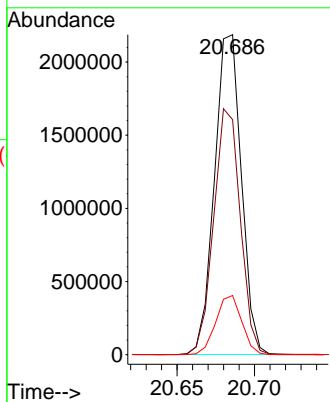
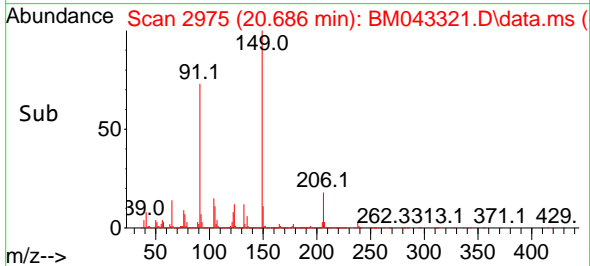


Tgt Ion:149 Resp: 264231
 Ion Ratio Lower Upper
 149 100
 91 73.4 56.9 85.3
 206 18.5 16.1 24.1

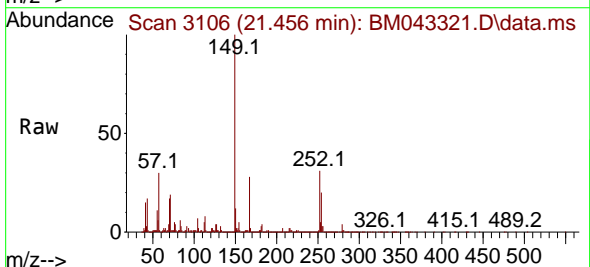
Manual Integrations

APPROVED

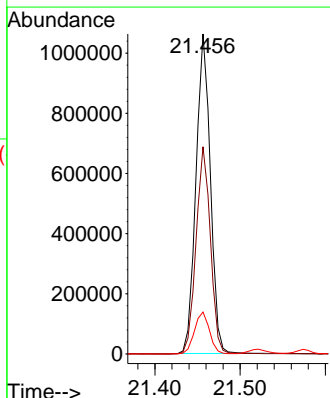
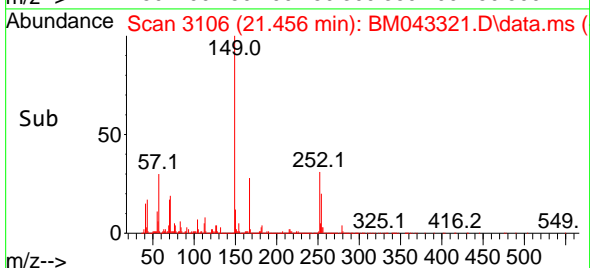
Reviewed By :Yogesh Patel 12/14/2023
 Supervised By :mohammad ahmed 12/15/2023

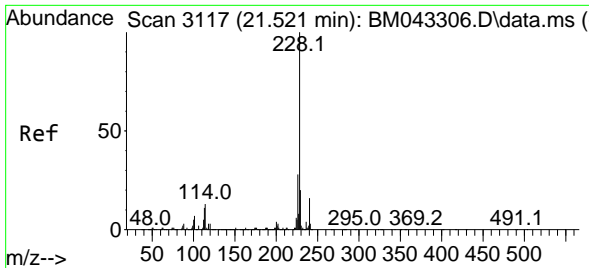


#84
 3,3'-Dichlorobenzidine
 Concen: 35.871 ng/ul
 RT: 21.456 min Scan# 3106
 Delta R.T. 0.000 min
 Lab File: BM043321.D
 Acq: 14 Dec 2023 03:00



Tgt Ion:252 Resp: 1245109
 Ion Ratio Lower Upper
 252 100
 254 64.8 51.3 76.9
 126 13.1 8.8 13.2





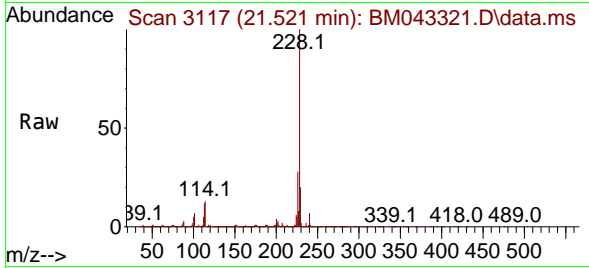
#85
 Benzo(a)anthracene
 Concen: 37.964 ng/uI
 RT: 21.521 min Scan# 3117
 Delta R.T. 0.000 min
 Lab File: BM043321.D
 Acq: 14 Dec 2023 03:00

Instrument :

BNA_M

ClientSampleId :

SLCS638



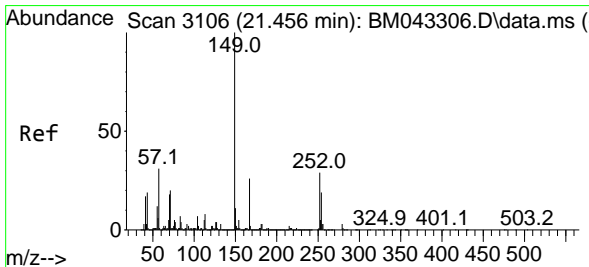
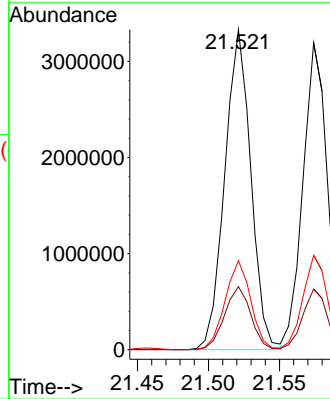
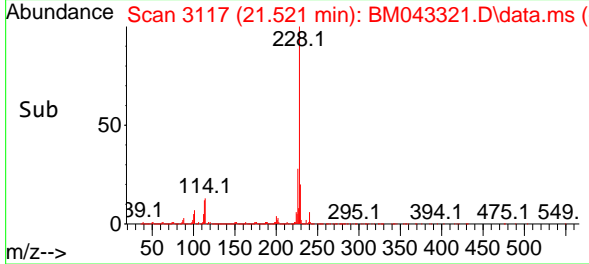
Tgt Ion:228 Resp: 425112
 Ion Ratio Lower Upper
 228 100
 229 19.7 15.8 23.8
 226 27.8 22.2 33.4

Manual Integrations

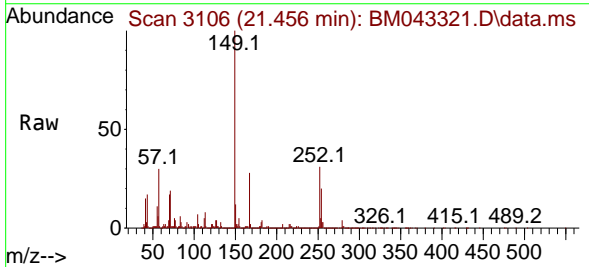
APPROVED

Reviewed By :Yogesh Patel 12/14/2023

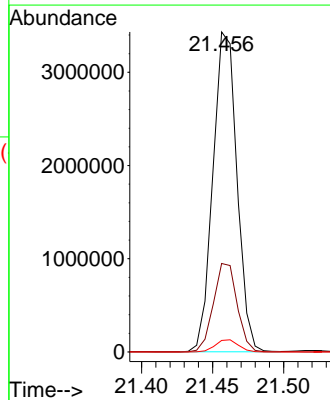
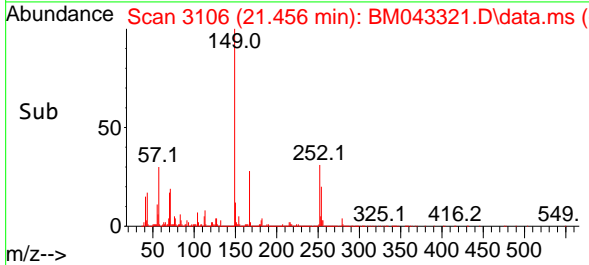
Supervised By :mohammad ahmed 12/15/2023

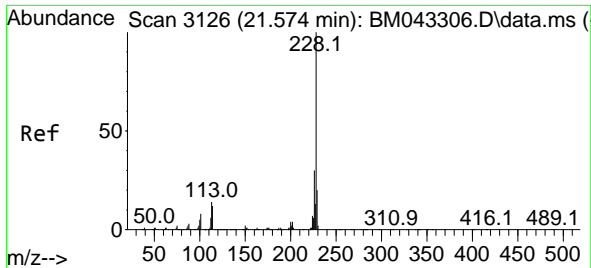


#86
 Bis(2-ethylhexyl)phthalate
 Concen: 57.655 ng/uI
 RT: 21.456 min Scan# 3106
 Delta R.T. 0.000 min
 Lab File: BM043321.D
 Acq: 14 Dec 2023 03:00



Tgt Ion:149 Resp: 4036982
 Ion Ratio Lower Upper
 149 100
 167 27.6 22.6 34.0
 279 3.6 3.7 5.5#





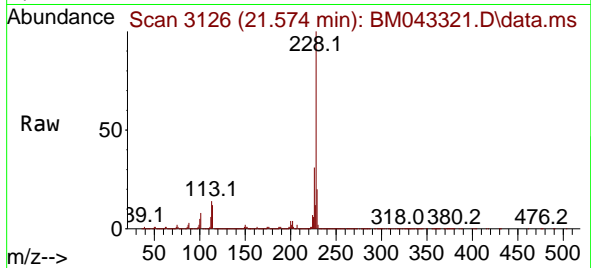
#87
 Chrysene
 Concen: 38.050 ng/u1
 RT: 21.574 min Scan# 3126
 Delta R.T. 0.000 min
 Lab File: BM043321.D
 Acq: 14 Dec 2023 03:00

Instrument :

BNA_M

ClientSampleId :

SLCS638

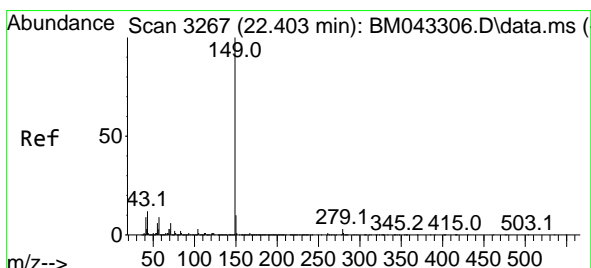
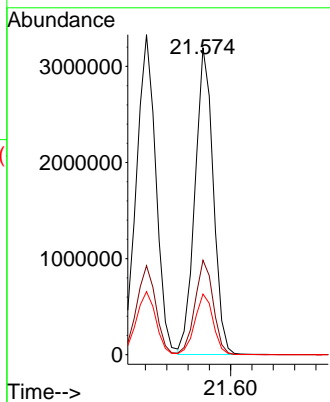
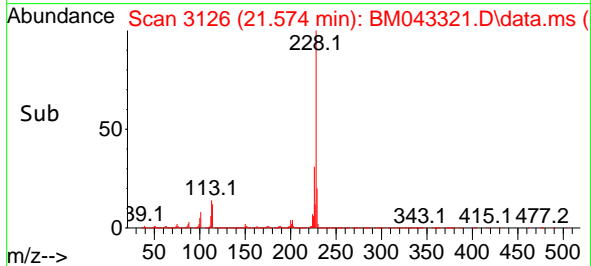


Tgt Ion:228 Resp: 380551
 Ion Ratio Lower Upper
 228 100
 226 30.7 24.8 37.2
 229 19.8 16.2 24.2

Manual Integrations

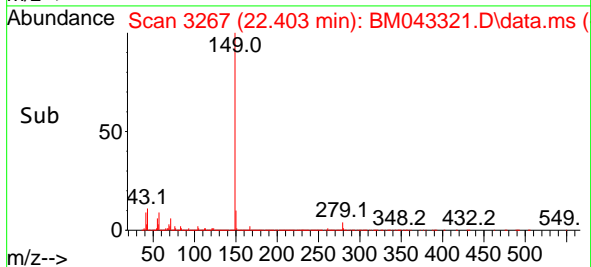
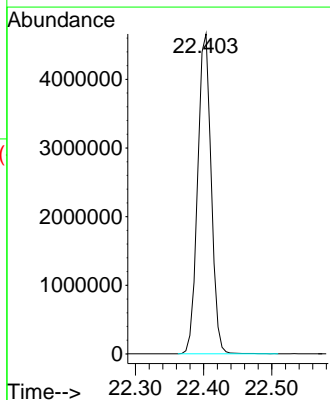
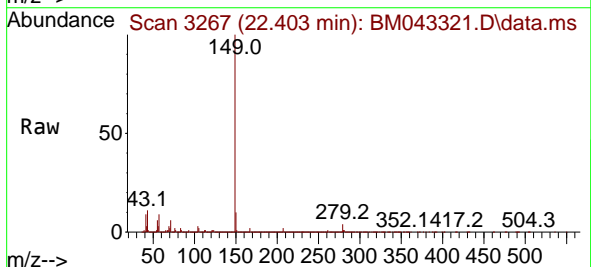
APPROVED

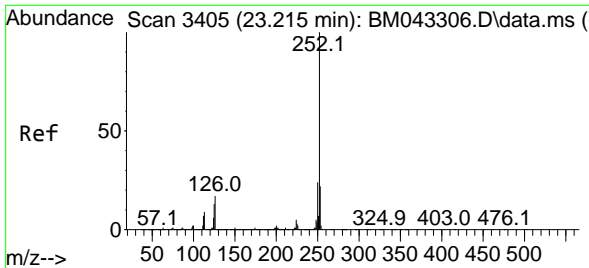
Reviewed By :Yogesh Patel 12/14/2023
 Supervised By :mohammad ahmed 12/15/2023



#89
 Di-n-octyl phthalate
 Concen: 72.180 ng/u1
 RT: 22.403 min Scan# 3267
 Delta R.T. 0.000 min
 Lab File: BM043321.D
 Acq: 14 Dec 2023 03:00

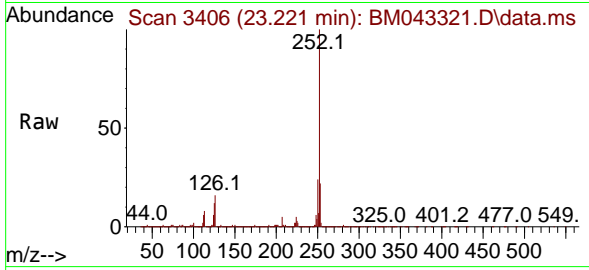
Tgt Ion:149 Resp: 6410073





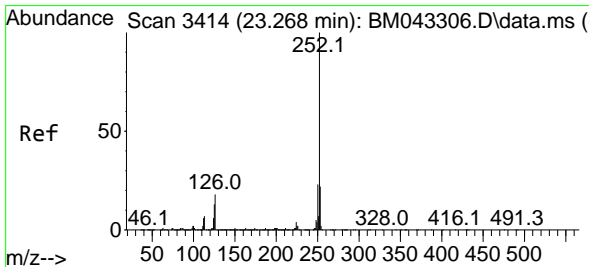
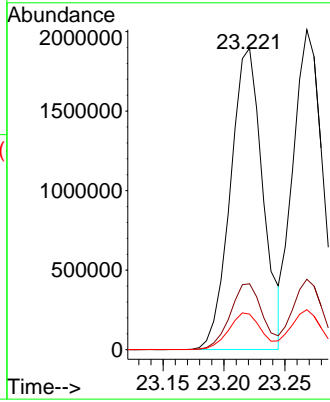
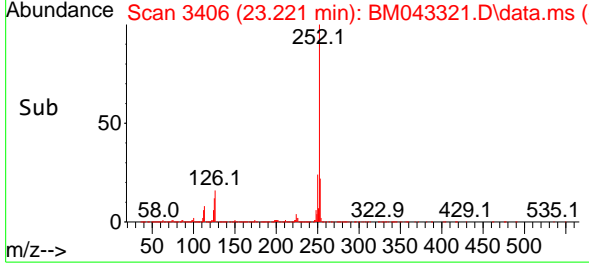
#90
 Benzo(b)fluoranthene
 Concen: 38.267 ng/ul
 RT: 23.221 min Scan# 3405
 Delta R.T. 0.006 min
 Lab File: BM043321.D
 Acq: 14 Dec 2023 03:00

Instrument : BNA_M
 ClientSampleId : SLCS638

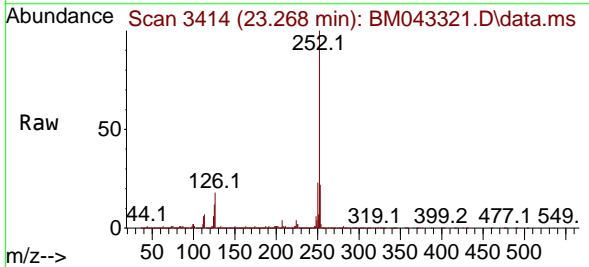


Tgt Ion:252 Resp: 352510
 Ion Ratio Lower Upper
 252 100
 253 21.9 17.4 26.2
 125 11.8 7.2 10.8

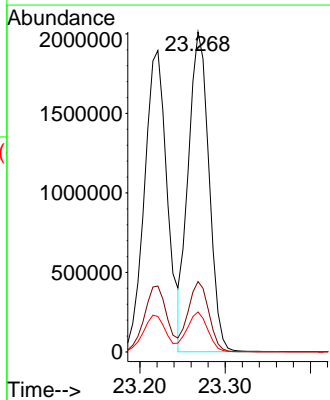
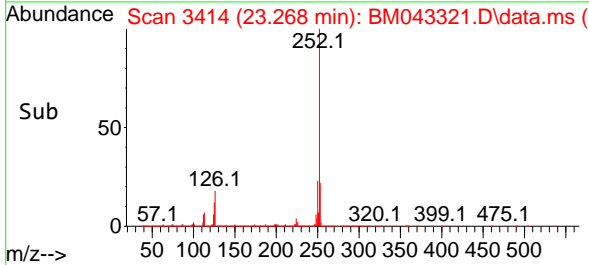
Manual Integrations
APPROVED
 Reviewed By :Yogesh Patel 12/14/2023
 Supervised By :mohammad ahmed 12/15/2023

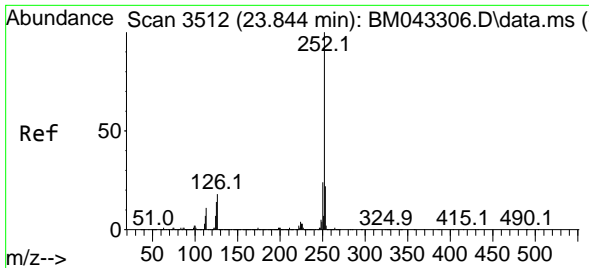


#91
 Benzo(k)fluoranthene
 Concen: 36.906 ng/ul
 RT: 23.268 min Scan# 3414
 Delta R.T. 0.000 min
 Lab File: BM043321.D
 Acq: 14 Dec 2023 03:00



Tgt Ion:252 Resp: 3386079
 Ion Ratio Lower Upper
 252 100
 253 22.0 17.9 26.9
 125 12.5 7.7 11.5





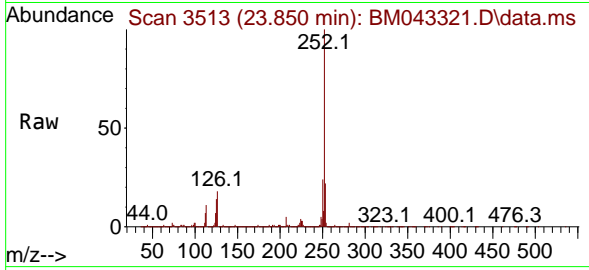
#93
 Benzo(a)pyrene
 Concen: 36.641 ng/u1
 RT: 23.850 min Scan# 311989
 Delta R.T. 0.006 min
 Lab File: BM043321.D
 Acq: 14 Dec 2023 03:00

Instrument :

BNA_M

ClientSampleId :

SLCS638



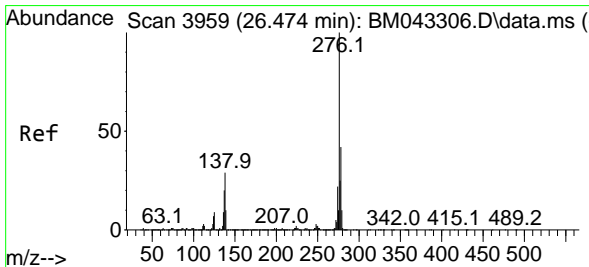
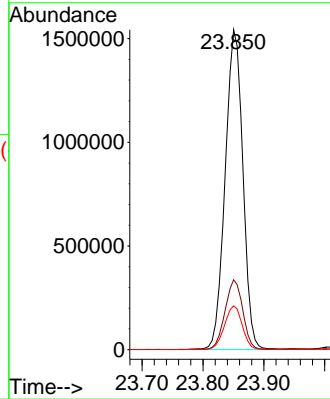
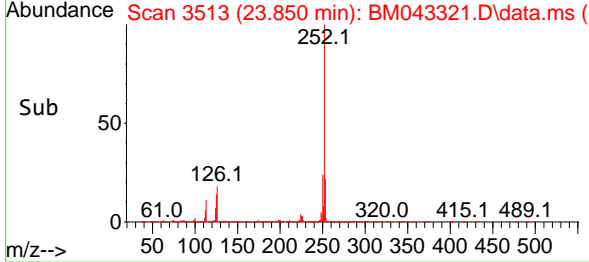
Tgt Ion:252 Resp: 311989
 Ion Ratio Lower Upper
 252 100
 253 21.8 17.8 26.6
 125 13.7 8.4 12.6

Manual Integrations

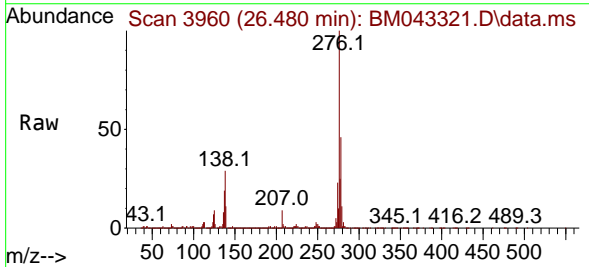
APPROVED

Reviewed By :Yogesh Patel 12/14/2023

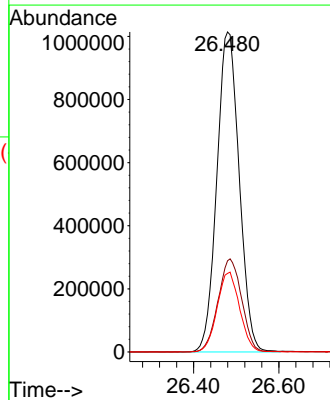
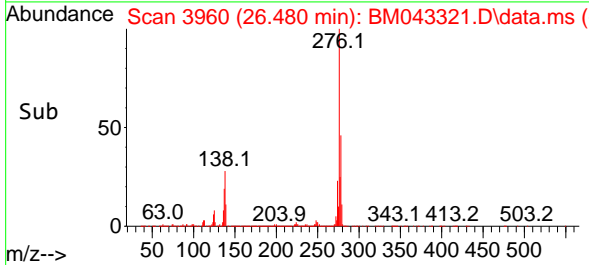
Supervised By :mohammad ahmed 12/15/2023

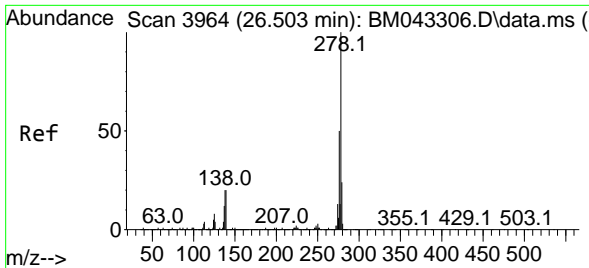


#94
 Indeno(1,2,3-cd)pyrene
 Concen: 38.007 ng/u1
 RT: 26.480 min Scan# 3960
 Delta R.T. 0.006 min
 Lab File: BM043321.D
 Acq: 14 Dec 2023 03:00



Tgt Ion:276 Resp: 3686273
 Ion Ratio Lower Upper
 276 100
 138 28.5 16.9 25.3#
 277 24.6 19.5 29.3





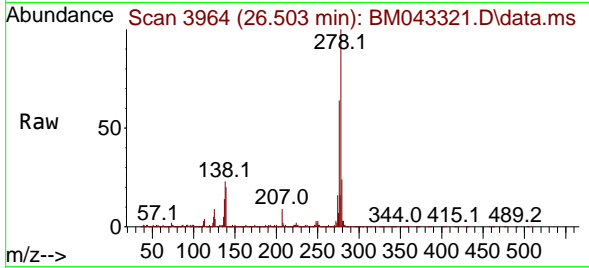
#95
 Dibenzo(a,h)anthracene
 Concen: 37.801 ng/ul
 RT: 26.503 min Scan# 3964
 Delta R.T. 0.000 min
 Lab File: BM043321.D
 Acq: 14 Dec 2023 03:00

Instrument :

BNA_M

ClientSampleId :

SLCS638



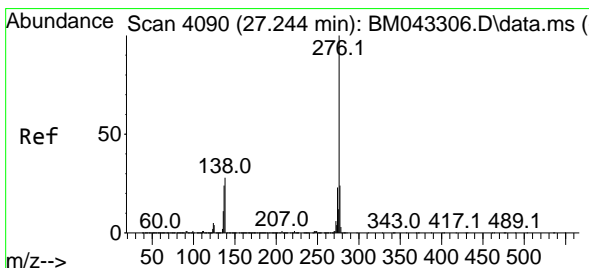
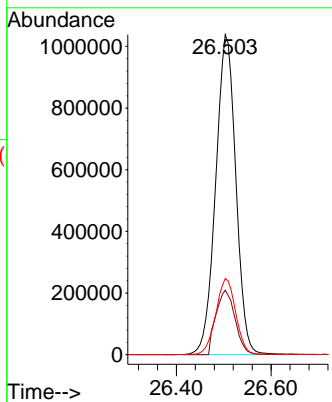
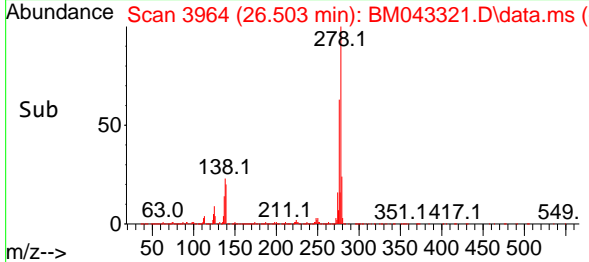
Tgt Ion:278 Resp: 3065560
 Ion Ratio Lower Upper
 278 100
 139 20.1 11.9 17.9#
 279 23.8 19.4 29.2

Manual Integrations

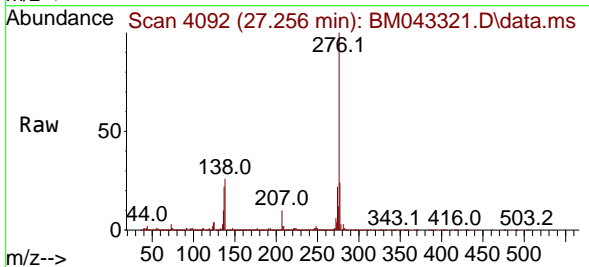
APPROVED

Reviewed By :Yogesh Patel 12/14/2023

Supervised By :mohammad ahmed 12/15/2023



#96
 Benzo(g,h,i)perylene
 Concen: 39.492 ng/ul
 RT: 27.256 min Scan# 4092
 Delta R.T. 0.012 min
 Lab File: BM043321.D
 Acq: 14 Dec 2023 03:00



Tgt Ion:276 Resp: 2885773
 Ion Ratio Lower Upper
 276 100
 138 25.6 16.2 24.2#
 277 23.7 18.7 28.1

