

Data Path : Z:\SVOASRV\HPCHEM1\BNA M\DATA\BM121820\
 Data File : BM028197.D
 Acq On : 19 Dec 2020 15:09
 Operator : JU/CG
 Sample : L5071-15
 Misc :
 ALS Vial : 41 Sample Multiplier: 1

Instrument :
 BNA_M
 ClientSampleId :
 A54K8

Integration Parameters: LSCINT.P

Integrator: RTE
 Smoothing : OFF
 Sampling : 1
 Start Thrs: 0.2
 Stop Thrs : 0

Filtering: 5
 Min Area: 0.1 % of largest Peak
 Max Peaks: 100
 Peak Location: TOP

If leading or trailing edge < 100 prefer < Baseline drop else tangent >
 Peak separation: 5

Method : Z:\SVOASRV\HPCHEM1\BNA_M\METHODS\SOM-EPA-BM121520MA.M
 Title : SVOA CALIBRATION

Signal : TIC

peak #	R.T. min	first scan	max scan	last scan	PK TY	peak height	corr. area	corr. % max.	% of total
1	3.416	36	39	45	rBV	17404	24434	1.69%	0.132%
2	3.910	120	123	125	rBV4	1346	1624	0.11%	0.009%
3	3.993	134	137	142	rBV5	1308	1679	0.12%	0.009%
4	4.122	157	159	167	rVB8	1850	3221	0.22%	0.017%
5	4.228	171	177	183	rBV	11976	16857	1.17%	0.091%
6	4.469	212	218	224	rBV2	15195	22015	1.53%	0.119%
7	4.904	287	292	298	rBV	10118	15041	1.04%	0.081%
8	5.234	342	348	354	rVB2	4317	7505	0.52%	0.040%
9	5.734	430	433	437	rVB2	1373	1485	0.10%	0.008%
10	6.163	499	506	509	rBV5	2139	3791	0.26%	0.020%
11	6.234	516	518	520	rBV2	2178	2064	0.14%	0.011%
12	6.957	638	641	645	rBV4	1181	1678	0.12%	0.009%
13	7.340	698	706	719	rBV	300467	496067	34.39%	2.672%
14	7.516	730	736	744	rBV	231239	359907	24.95%	1.939%
15	7.569	744	745	752	rVB5	1752	2020	0.14%	0.011%
16	7.722	765	771	780	rVB	306354	496866	34.44%	2.676%
17	7.810	780	786	791	rBV4	6659	10888	0.75%	0.059%
18	8.204	845	853	860	rBV	492209	773588	53.63%	4.167%
19	8.263	860	863	868	rVB2	4034	5401	0.37%	0.029%
20	8.428	886	891	893	rBV3	1019	1529	0.11%	0.008%
21	8.904	966	972	983	rBV	334212	544242	37.73%	2.932%
22	9.039	994	995	999	rVB3	1749	1450	0.10%	0.008%
23	9.381	1045	1053	1060	rBV	249318	425413	29.49%	2.291%
24	9.534	1077	1079	1086	rVB2	2323	3147	0.22%	0.017%
25	9.769	1115	1119	1123	rBV	5800	8050	0.56%	0.043%
26	10.104	1168	1176	1185	rBV	201292	328859	22.80%	1.771%
27	10.645	1261	1268	1277	rBV	324938	537689	37.27%	2.896%
28	11.033	1326	1334	1342	rBV	618044	1032953	71.61%	5.564%
29	11.157	1348	1355	1364	rBV	244577	411815	28.55%	2.218%
30	11.780	1459	1461	1467	rVB3	1170	1695	0.12%	0.009%
31	11.839	1467	1471	1476	rBV3	839	1617	0.11%	0.009%
32	12.492	1578	1582	1587	rVB4	1905	2880	0.20%	0.016%
33	12.604	1596	1601	1605	rBV	4882	6939	0.48%	0.037%
34	13.192	1698	1701	1705	rBV3	2277	2773	0.19%	0.015%

Data Path : Z:\SVOASRV\HPCHEM1\BNA M\DATA\BM121820\
 Data File : BM028197.D
 Acq On : 19 Dec 2020 15:09
 Operator : JU/CG
 Sample : L5071-15
 Misc :
 ALS Vial : 41 Sample Multiplier: 1

Instrument :
 BNA_M
 ClientSampleId :
 A54K8

Integration Parameters: LSCINT.P

Integrator: RTE
 Smoothing : OFF
 Sampling : 1
 Start Thrs: 0.2
 Stop Thrs : 0

Filtering: 5
 Min Area: 0.1 % of largest Peak
 Max Peaks: 100
 Peak Location: TOP

If leading or trailing edge < 100 prefer < Baseline drop else tangent >
 Peak separation: 5

Method : Z:\SVOASRV\HPCHEM1\BNA_M\METHODS\SOM-EPA-BM121520MA.M
 Title : SVOA CALIBRATION

35	13.439	1739	1743	1749	rBV6	3617	6330	0.44%	0.034%
36	13.645	1775	1778	1781	rBV2	2224	2984	0.21%	0.016%
37	13.710	1784	1789	1795	rVB2	4912	6917	0.48%	0.037%
38	14.227	1871	1877	1881	rBV	498254	671811	46.57%	3.619%
39	14.274	1881	1885	1891	rVB	185618	246757	17.11%	1.329%
40	14.451	1911	1915	1921	rBV4	6515	10181	0.71%	0.055%
41	14.527	1921	1928	1937	rVV	623861	874397	60.62%	4.710%
42	14.704	1954	1958	1965	rBV5	2402	3826	0.27%	0.021%
43	14.827	1973	1979	1987	rBV2	796501	1211609	83.99%	6.526%
44	14.998	2000	2008	2019	rBV	125425	198145	13.74%	1.067%
45	15.598	2107	2110	2115	rBV4	1815	2825	0.20%	0.015%
46	15.639	2115	2117	2122	rVB5	1670	1854	0.13%	0.010%
47	15.810	2140	2146	2155	rVB	745474	1029589	71.37%	5.546%
48	15.921	2160	2165	2173	rBV	150615	213359	14.79%	1.149%
49	16.045	2184	2186	2191	rVB2	8519	9889	0.69%	0.053%
50	16.192	2208	2211	2214	rBV5	1597	2033	0.14%	0.011%
51	16.498	2260	2263	2269	rVB5	1634	2348	0.16%	0.013%
52	16.674	2289	2293	2296	rBV4	1361	2167	0.15%	0.012%
53	17.062	2356	2359	2362	rVB3	1134	1497	0.10%	0.008%
54	17.286	2394	2397	2400	rBV4	2342	2555	0.18%	0.014%
55	17.339	2400	2406	2411	rVV3	3650	6071	0.42%	0.033%
56	17.415	2416	2419	2421	rBV4	1769	2047	0.14%	0.011%
57	17.551	2436	2442	2448	rBV	958558	1297099	89.92%	6.987%
58	17.645	2452	2458	2465	rVV2	742251	1071323	74.27%	5.771%
59	18.057	2527	2528	2532	rBV4	1602	1785	0.12%	0.010%
60	18.186	2548	2550	2553	rVB3	2076	1626	0.11%	0.009%
61	18.404	2582	2587	2593	rBV4	31645	47159	3.27%	0.254%
62	18.592	2617	2619	2621	rBV3	1898	1813	0.13%	0.010%
63	18.886	2667	2669	2670	rBV2	2720	2403	0.17%	0.013%
64	19.186	2718	2720	2725	rBV6	3593	5955	0.41%	0.032%
65	19.545	2778	2781	2784	rBV3	10432	11077	0.77%	0.060%
66	19.662	2798	2801	2806	rVB7	8777	9454	0.66%	0.051%
67	19.903	2837	2842	2850	rBV	975875	1295632	89.82%	6.979%
68	21.345	3084	3087	3096	rBV	298513	457566	31.72%	2.465%
69	21.550	3119	3122	3126	rVB	113408	110877	7.69%	0.597%
70	21.662	3136	3141	3146	rBV	1099838	1397166	96.86%	7.526%
71	23.874	3511	3517	3525	rVB	706364	1345053	93.24%	7.245%

Data Path : Z:\SVOASRV\HPCHEM1\BNA M\DATA\BM121820\
Data File : BM028197.D
Acq On : 19 Dec 2020 15:09
Operator : JU/CG
Sample : L5071-15
Misc :
ALS Vial : 41 Sample Multiplier: 1

Instrument :
BNA_M
ClientSampleId :
A54K8

Integration Parameters: LSCINT.P
Integrator: RTE
Smoothing : OFF Filtering: 5
Sampling : 1 Min Area: 0.1 % of largest Peak
Start Thrs: 0.2 Max Peaks: 100
Stop Thrs : 0 Peak Location: TOP

If leading or trailing edge < 100 prefer < Baseline drop else tangent >
Peak separation: 5

Method : Z:\SVOASRV\HPCHEM1\BNA_M\METHODS\SOM-EPA-BM121520MA.M
Title : SVOA CALIBRATION

72	24.027	3537	3543	3551	rVB	755342	1442527	100.00%	7.770%
----	--------	------	------	------	-----	--------	---------	---------	--------

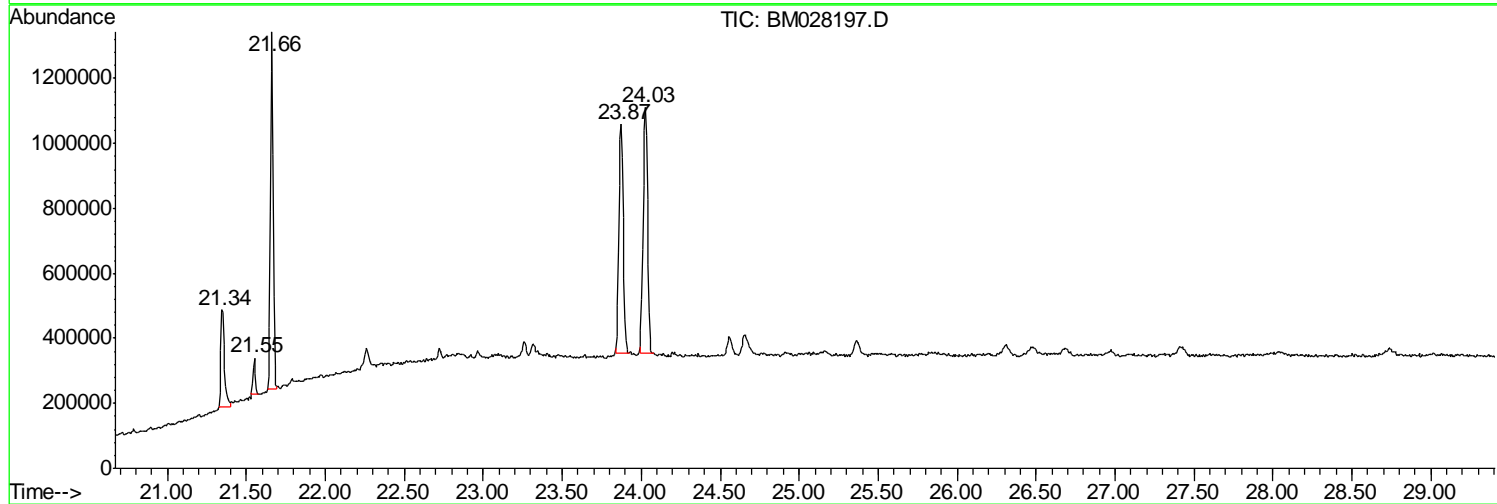
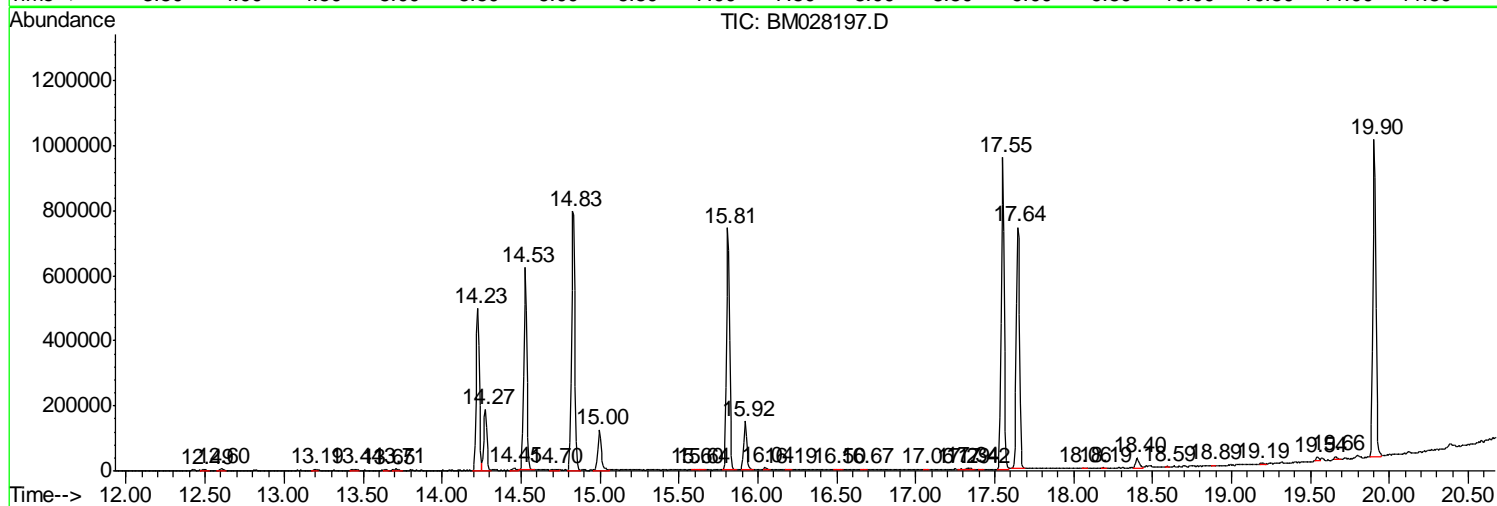
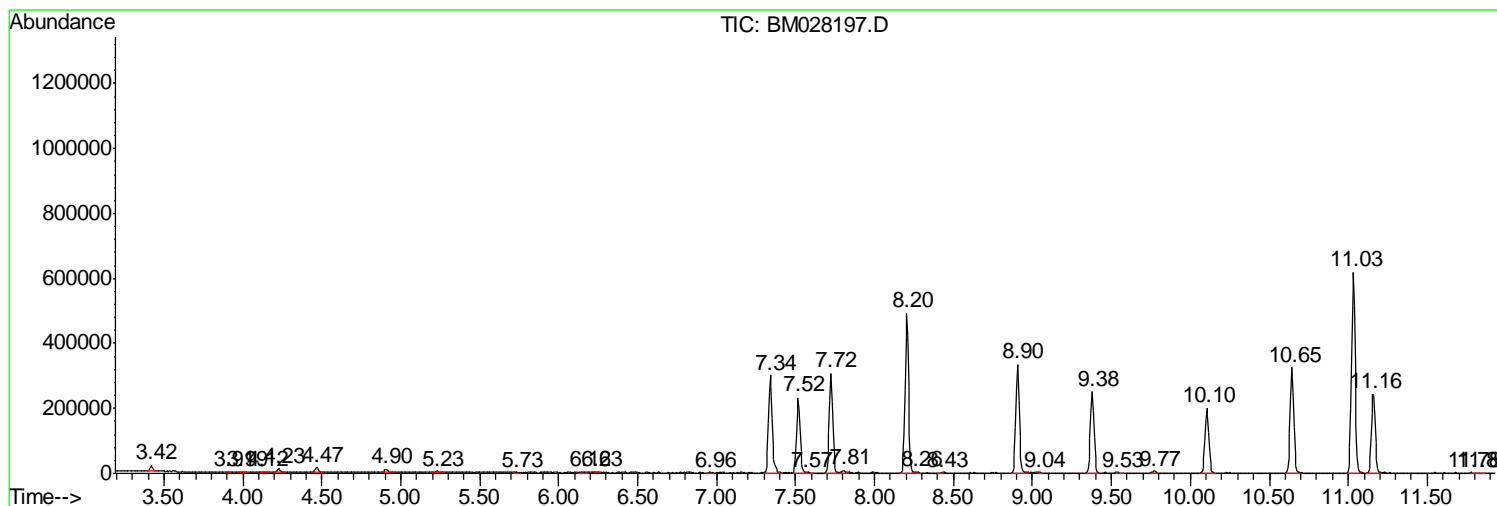
Sum of corrected areas: 18564888

Data Path : Z:\SVOASRV\HPCHEM1\BNA M\DATA\BM121820\
 Data File : BM028197.D
 Acq On : 19 Dec 2020 15:09
 Operator : JU/CG
 Sample : L5071-15
 Misc :
 ALS Vial : 41 Sample Multiplier: 1

Instrument :
 BNA_M
 ClientSampled :
 A54K8

Quant Method : Z:\SVOASRV\HPCHEM1\BNA_M\METHODS\SOM-EPA-BM121520MA.M
 Quant Title : SVOA CALIBRATION

TIC Library : C:\DATABASE\NIST11.L
 TIC Integration Parameters: LSCINT.P



Data Path : Z:\SVOASRV\HPCHEM1\BNA M\DATA\BM121820\
 Data File : BM028197.D
 Acq On : 19 Dec 2020 15:09
 Operator : JU/CG
 Sample : L5071-15
 Misc :
 ALS Vial : 41 Sample Multiplier: 1

Instrument :
 BNA_M
 ClientSampleId :
 A54K8

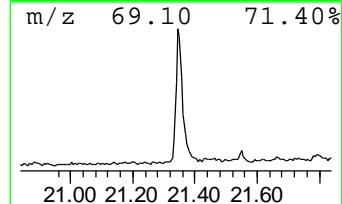
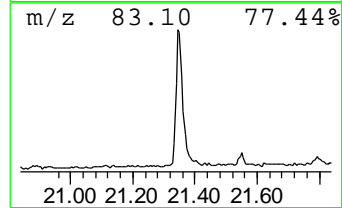
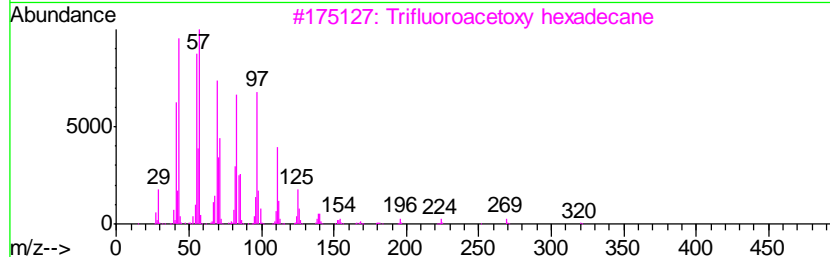
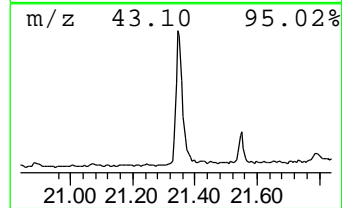
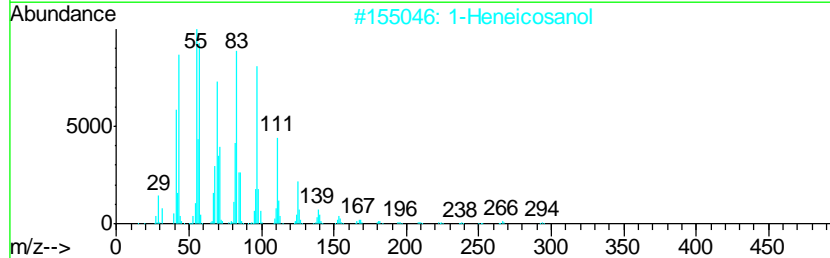
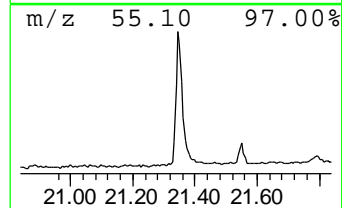
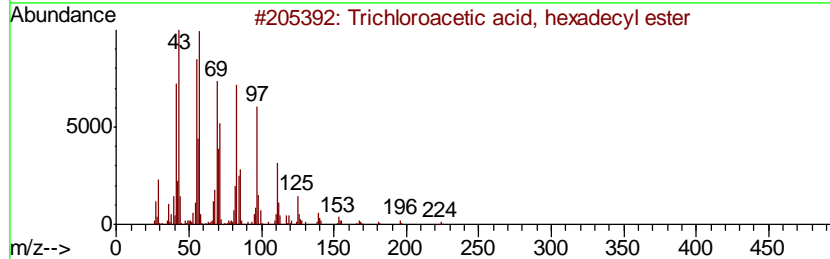
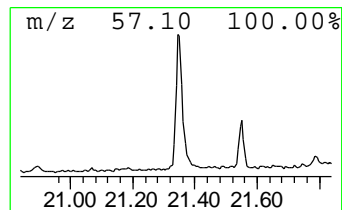
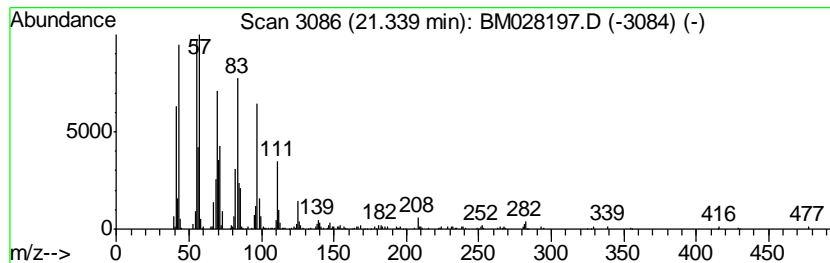
Quant Method : Z:\SVOASRV\HPCHEM1\BNA_M\METHODS\SOM-EPA-BM121520MA.M
 Quant Title : SVOA CALIBRATION

TIC Library : C:\DATABASE\NIST11.L
 TIC Integration Parameters: LSCINT.P

 Peak Number 1 Trichloroacetic acid, hexad... Concentration Rank 1

R.T.	EstConc	Area	Relative to ISTD	R.T.
21.34	6.55 ng/ul	457566	Chrysene-d12	21.66

Hit#	of	Tentative ID	MW	MolForm	CAS#	Qual
1	5	Trichloroacetic acid, hexadecyl ...	386	C18H33Cl3O2	074339-54-1	95
2		1-Heneicosanol	312	C21H44O	015594-90-8	94
3		Trifluoroacetoxy hexadecane	338	C18H33F3O2	006222-03-3	94
4		Heptadecyl heptafluorobutyrate	452	C21H35F7O2	959085-66-6	94
5		Bromoacetic acid, octadecyl ester	390	C20H39BrO2	018992-03-5	94



Data Path : Z:\SVOASRV\HPCHEM1\BNA_M\DATA\BM121820\
Data File : BM028197.D
Acq On : 19 Dec 2020 15:09
Operator : JU/CG
Sample : L5071-15
Misc :
ALS Vial : 41 Sample Multiplier: 1

Instrument :
BNA_M
ClientSampleId :
A54K8

Quant Method : Z:\SVOASRV\HPCHEM1\BNA_M\METHODS\SOM-EPA-BM121520MA.M
Quant Title : SVOA CALIBRATION

TIC Library : C:\DATABASE\NIST11.L
TIC Integration Parameters: LSCINT.P

TIC Top Hit name	RT	EstConc	Units	Response	--Internal Standard--			
					#	RT	Resp	Conc
Trichloroacetic a...	21.34	6.5	ng/ul	457566	5	21.66	1397170	20.0