

Data Path : Z:\SVOASRV\HPCHEM1\BNA_M\DATA\BM122018\
 Data File : BM018337.D
 Acq On : 20 Dec 2018 19:21
 Operator : JU/SJ
 Sample : J6389-03
 Misc :
 ALS Vial : 8 Sample Multiplier: 1

Instrument :
 BNA_M
 ClientSampleId :
 P001-SS012-1218-01

Quant Time: Dec 21 01:26:22 2018
 Quant Method : Z:\SVOASRV\HPCHEM1\BNA_M\METHODS\8270-BM121518.M
 Quant Title : ASP BNA STANDARDS FOR 5 POINT CALIBRATION
 QLast Update : Sat Dec 15 21:39:37 2018
 Response via : Initial Calibration

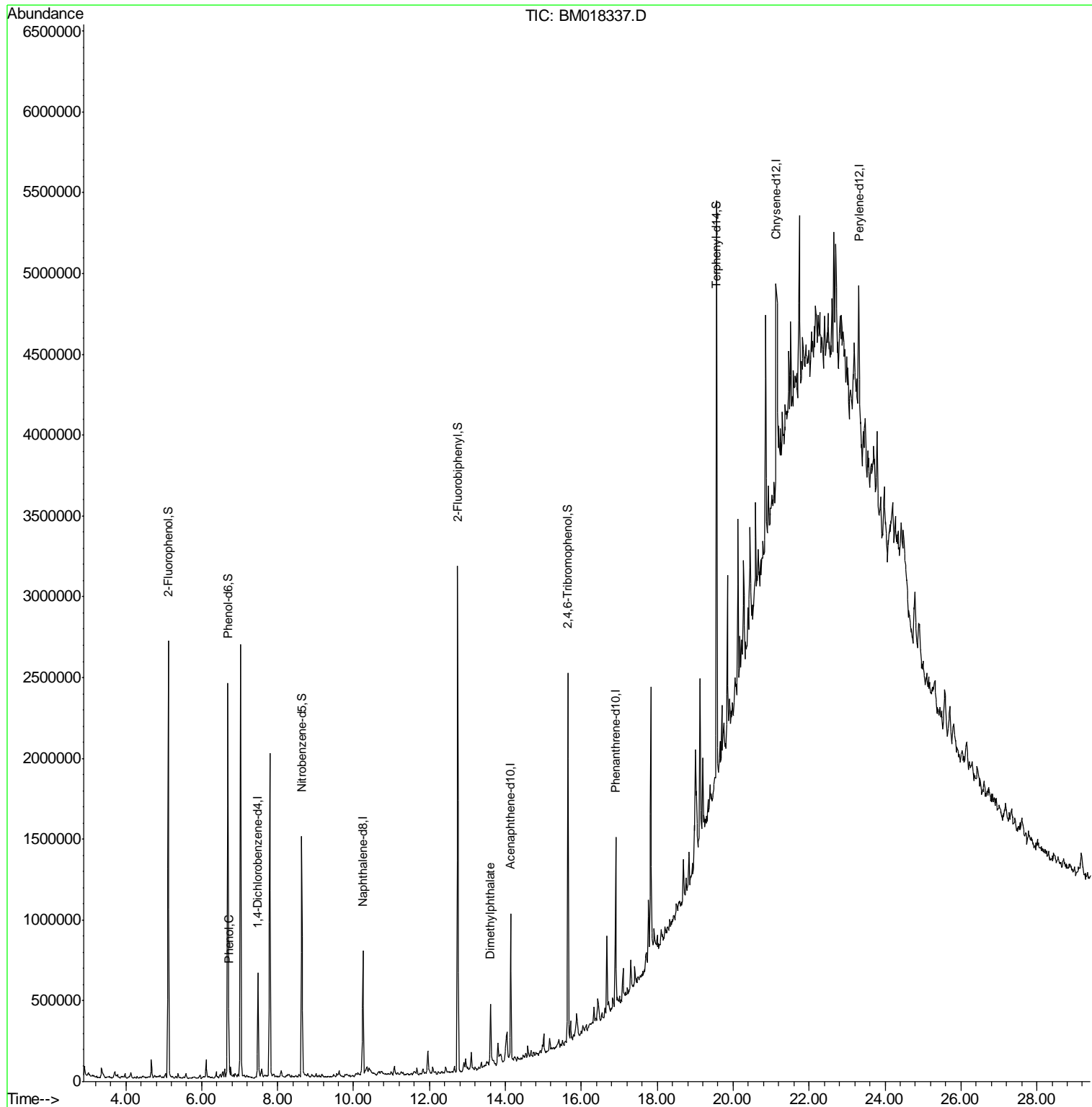
Internal Standards	R.T.	QIon	Response	Conc	Units	Dev(Min)
1) 1,4-Dichlorobenzene-d4	7.48	152	151811	20.00	ng	-0.02
21) Naphthalene-d8	10.25	136	578161	20.00	ng	-0.02
39) Acenaphthene-d10	14.14	164	280029	20.00	ng	-0.02
64) Phenanthrene-d10	16.90	188	540741	20.00	ng	-0.02
76) Chrysene-d12	21.13	240	563673	20.00	ng	-0.01
87) Perylene-d12	23.31	264	547007	20.00	ng	0.00
System Monitoring Compounds						
5) 2-Fluorophenol	5.12	112	1033587	113.73	ng	0.00
7) Phenol-d6	6.69	99	1346571	106.61	ng	-0.01
23) Nitrobenzene-d5	8.64	82	870078	77.19	ng	-0.02
42) 2,4,6-Tribromophenol	15.65	330	368160	89.58	ng	-0.02
45) 2-Fluorobiphenyl	12.74	172	1492776	69.05	ng	-0.02
79) Terphenyl-d14	19.56	244	1539024	61.75	ng	-0.01
Target Compounds						
10) Phenol	6.72	94	86448	6.462	ng	97
50) Dimethylphthalate	13.61	163	199914	8.587	ng	99

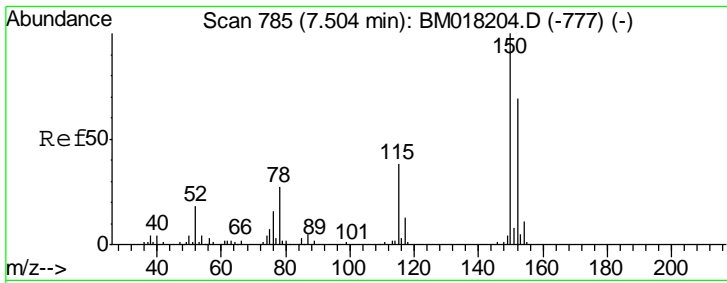
(#) = qualifier out of range (m) = manual integration (+) = signals summed

Data Path : Z:\SVOASRV\HPCHEM1\BNA_M\DATA\BM122018\
 Data File : BM018337.D
 Acq On : 20 Dec 2018 19:21
 Operator : JU/SJ
 Sample : J6389-03
 Misc :
 ALS Vial : 8 Sample Multiplier: 1

Instrument :
 BNA_M
 ClientSampleId :
 P001-SS012-1218-01

Quant Time: Dec 21 01:26:22 2018
 Quant Method : Z:\SVOASRV\HPCHEM1\BNA_M\METHODS\8270-BM121518.M
 Quant Title : ASP BNA STANDARDS FOR 5 POINT CALIBRATION
 QLast Update : Sat Dec 15 21:39:37 2018
 Response via : Initial Calibration

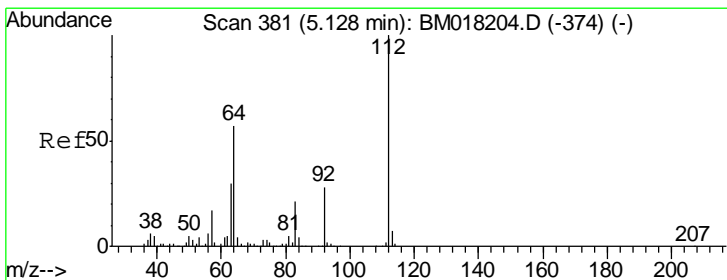
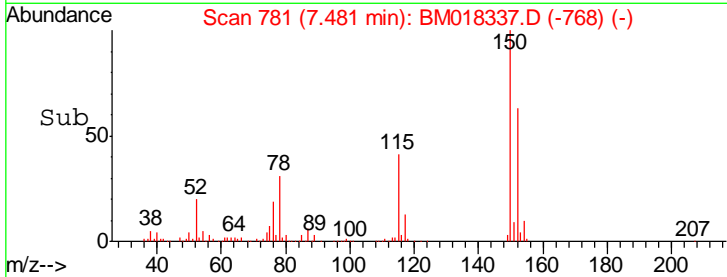
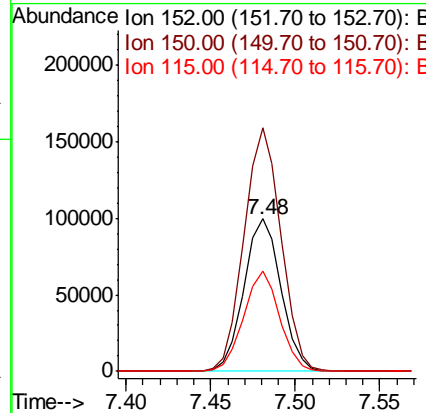
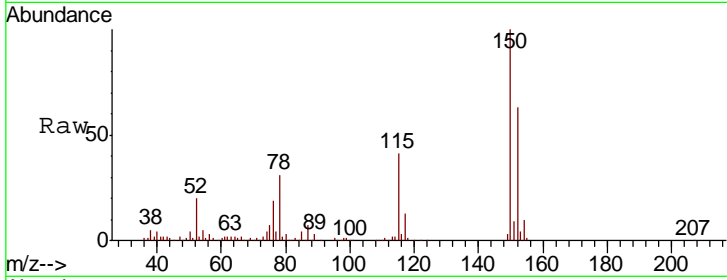




#1
 1,4-Dichlorobenzene-d4
 Concen: 20.000 ng
 RT: 7.48 min Scan# 781
 Delta R.T. -0.02 min
 Lab File: BM018337.D
 Acq: 20 Dec 2018 19:21

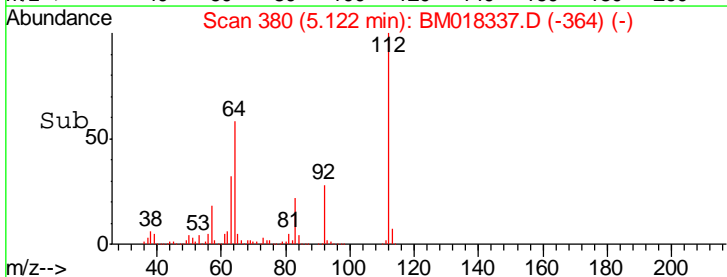
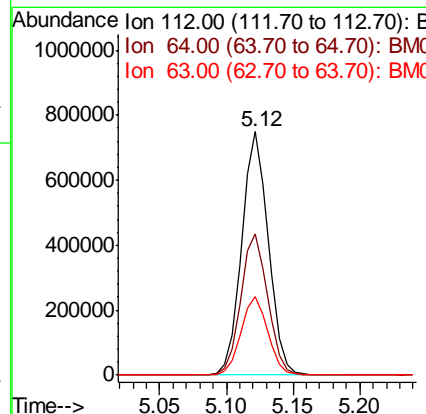
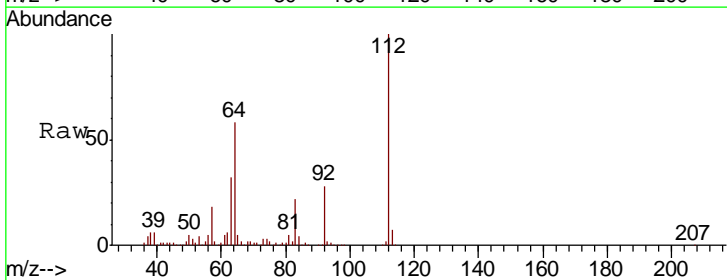
Instrument :
 BNA_M
ClientSampleId :
 P001-SS012-1218-01

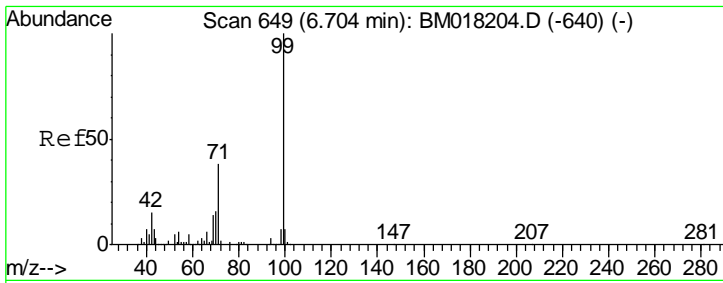
Tgt Ion	Resp	Lower	Upper
152	151811		
150	159.7	116.1	174.1
115	65.3	44.6	67.0



#5
 2-Fluorophenol
 Concen: 113.733 ng
 RT: 5.12 min Scan# 380
 Delta R.T. -0.01 min
 Lab File: BM018337.D
 Acq: 20 Dec 2018 19:21

Tgt Ion	Resp	Lower	Upper
112	1033587		
64	58.0	45.4	68.2
63	32.3	24.0	36.0

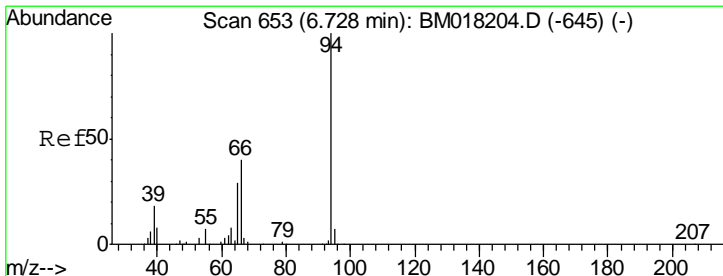
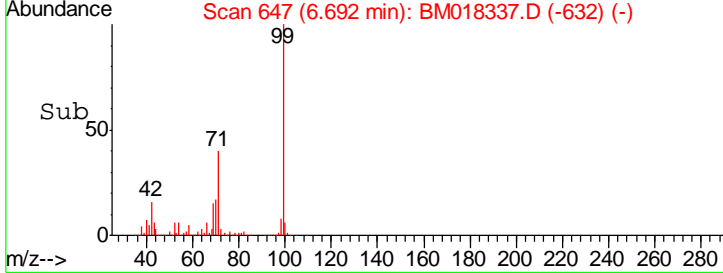
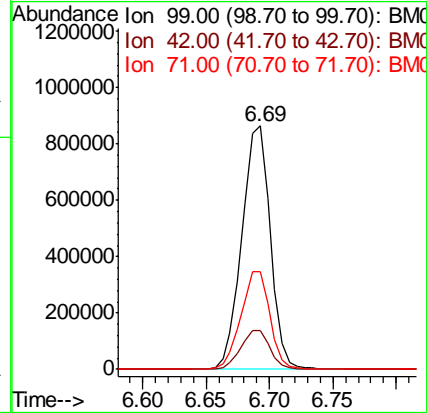
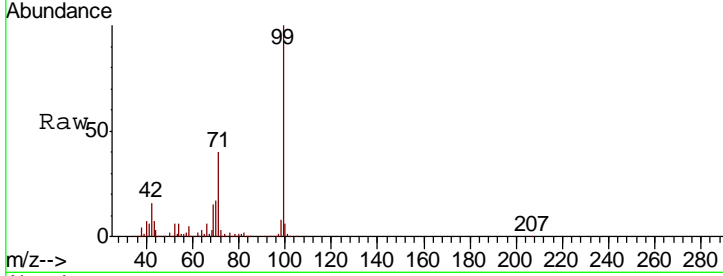




#7
 Phenol-d6
 Concen: 106.605 ng
 RT: 6.69 min Scan# 647
 Delta R.T. -0.01 min
 Lab File: BM018337.D
 Acq: 20 Dec 2018 19:21

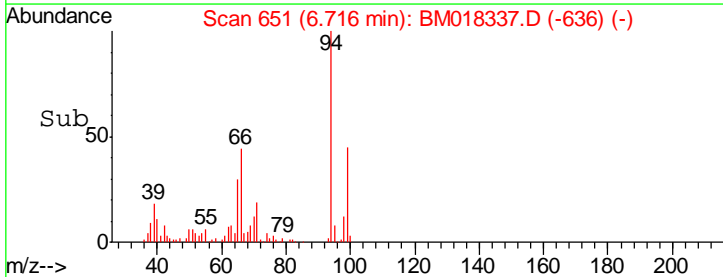
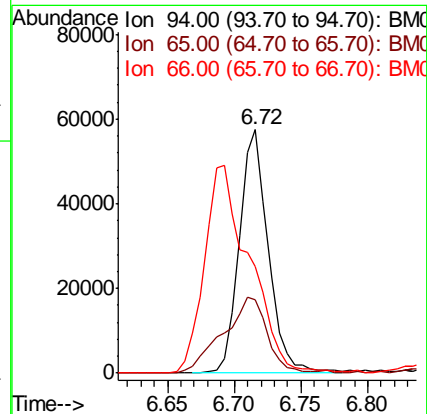
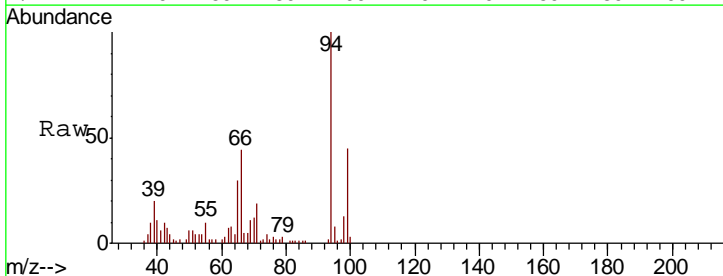
Instrument :
 BNA_M
 ClientSampleId :
 P001-SS012-1218-01

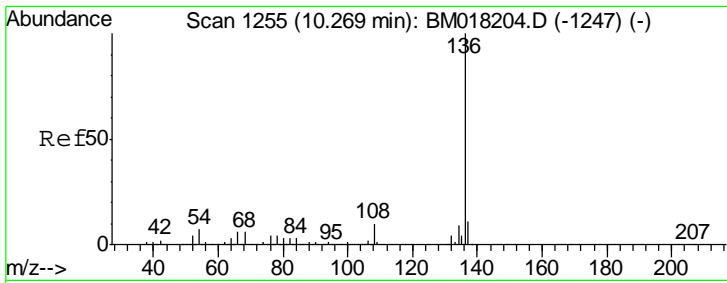
Tgt Ion	Resp	Lower	Upper
99	1346571		
42	16.2	12.3	18.5
71	40.0	30.2	45.2



#10
 Phenol
 Concen: 6.462 ng
 RT: 6.72 min Scan# 651
 Delta R.T. -0.01 min
 Lab File: BM018337.D
 Acq: 20 Dec 2018 19:21

Tgt Ion	Resp	Lower	Upper
94	86448		
65	30.0	9.5	49.5
66	43.9	21.3	61.3

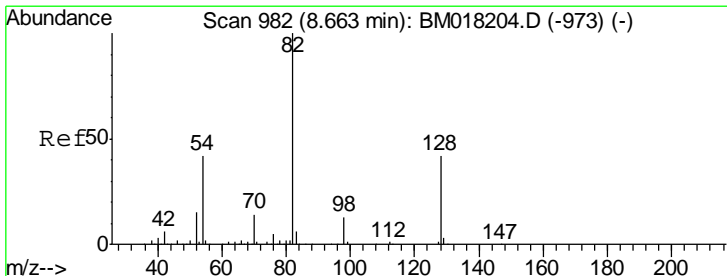
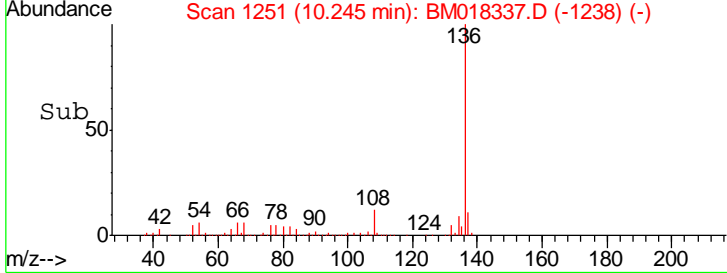
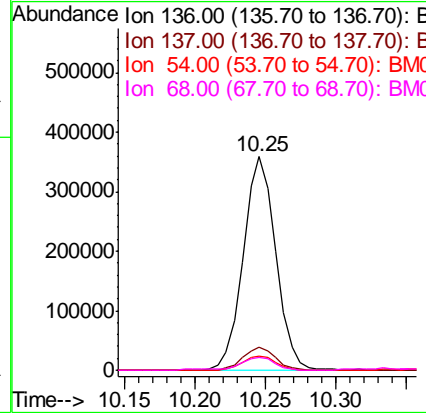
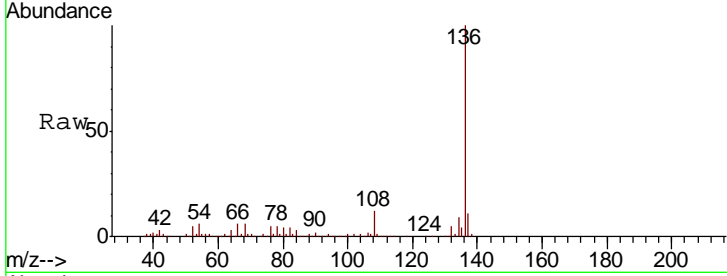




#21
 Naphthalene-d8
 Concen: 20.000 ng
 RT: 10.25 min Scan# 1251
 Delta R.T. -0.02 min
 Lab File: BM018337.D
 Acq: 20 Dec 2018 19:21

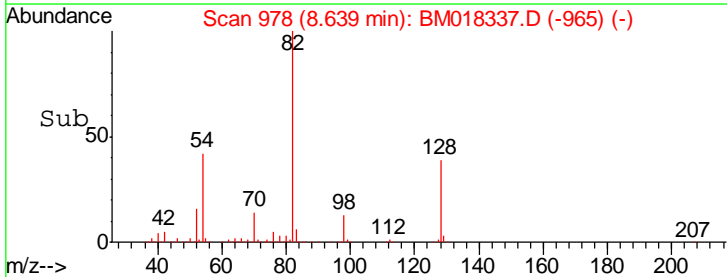
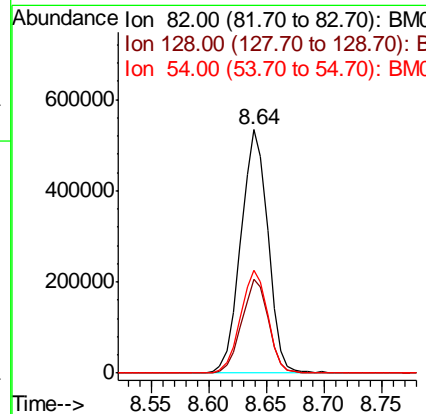
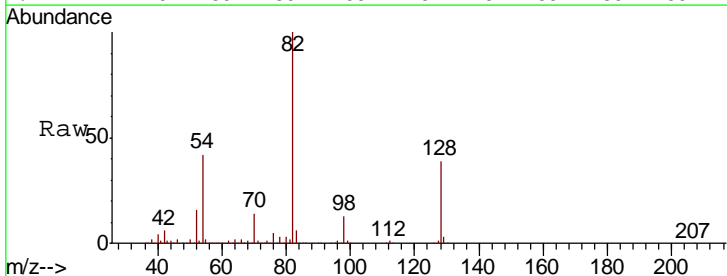
Instrument :
 BNA_M
 ClientSampled :
 P001-SS012-1218-01

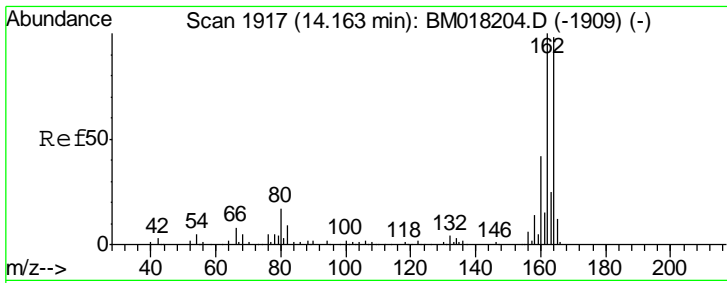
Tgt Ion	Resp	Lower	Upper
136	578161		
137	11.0	9.2	13.8
54	6.4	5.2	7.8
68	6.1	5.0	7.6



#23
 Nitrobenzene-d5
 Concen: 77.192 ng
 RT: 8.64 min Scan# 978
 Delta R.T. -0.02 min
 Lab File: BM018337.D
 Acq: 20 Dec 2018 19:21

Tgt Ion	Resp	Lower	Upper
82	870078		
128	38.7	33.4	50.2
54	42.3	33.4	50.2

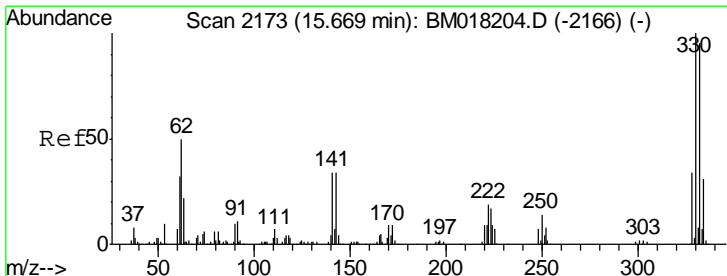
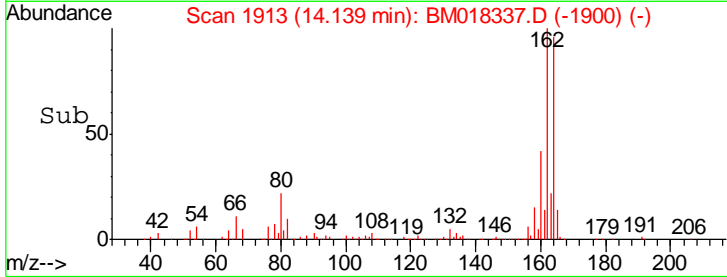
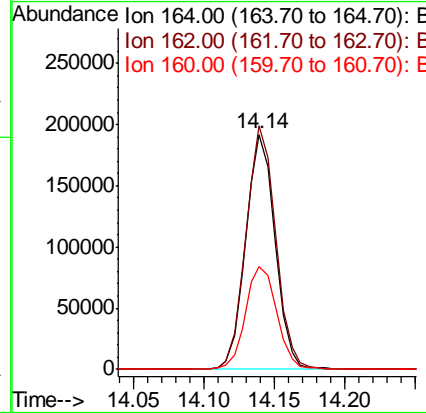
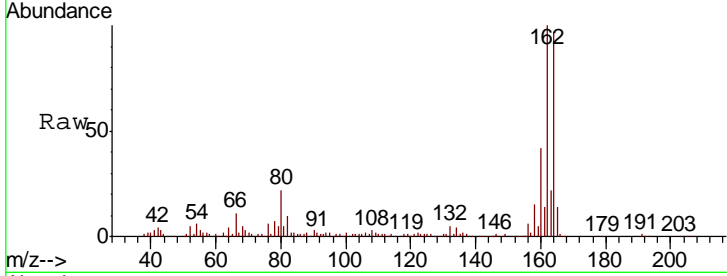




#39
 Acenaphthene-d10
 Concen: 20.000 ng
 RT: 14.14 min Scan# 1913
 Delta R.T. -0.02 min
 Lab File: BM018337.D
 Acq: 20 Dec 2018 19:21

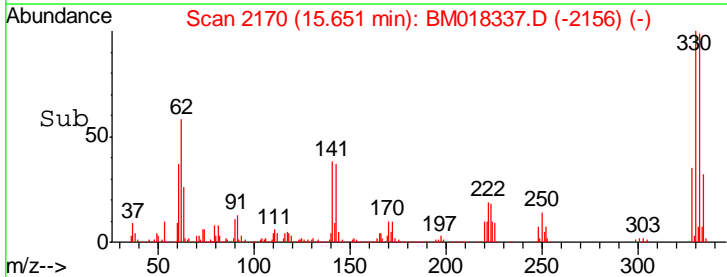
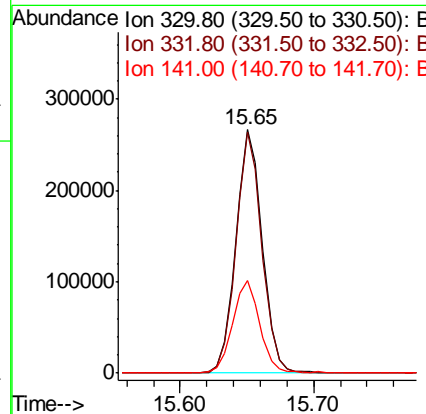
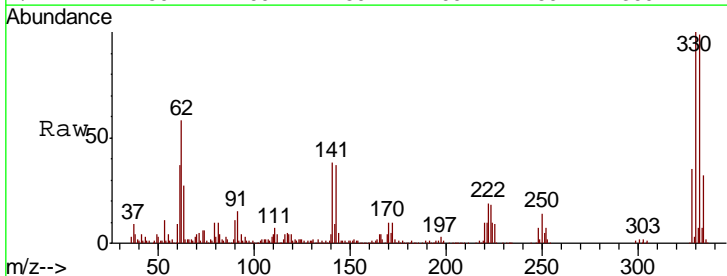
Instrument :
 BNA_M
 ClientSampled :
 P001-SS012-1218-01

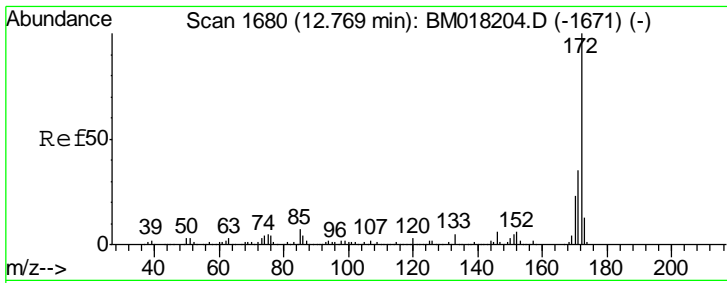
Tgt Ion	Resp	Lower	Upper
164	100		
162	103.5	81.8	122.6
160	43.6	34.6	51.8



#42
 2,4,6-Tribromophenol
 Concen: 89.576 ng
 RT: 15.65 min Scan# 2170
 Delta R.T. -0.02 min
 Lab File: BM018337.D
 Acq: 20 Dec 2018 19:21

Tgt Ion	Resp	Lower	Upper
330	100		
332	97.0	78.6	118.0
141	38.1	27.1	40.7



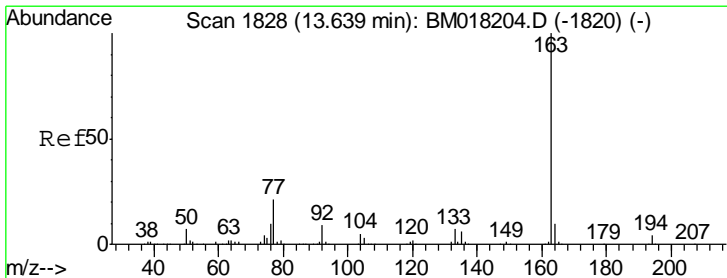
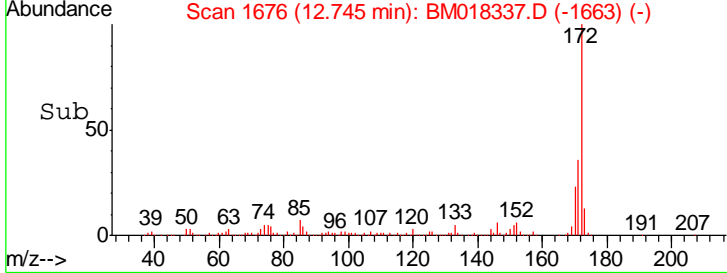
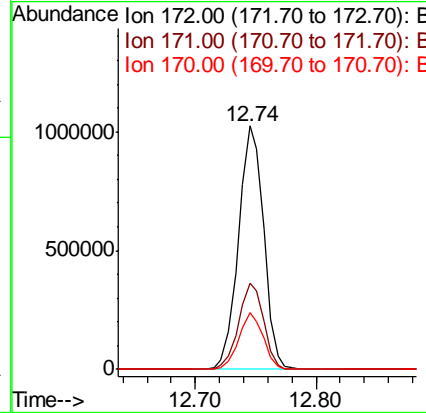
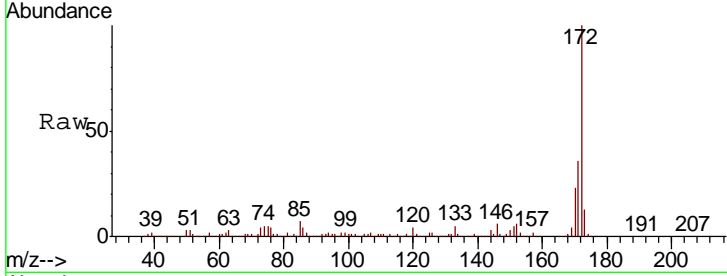


#45
 2-Fluorobiphenyl
 Concen: 69.046 ng
 RT: 12.74 min Scan# 1676
 Delta R.T. -0.02 min
 Lab File: BM018337.D
 Acq: 20 Dec 2018 19:21

Instrument :
 BNA_M
 ClientSampled :
 P001-SS012-1218-01

Tgt Ion:172 Resp: 1492776

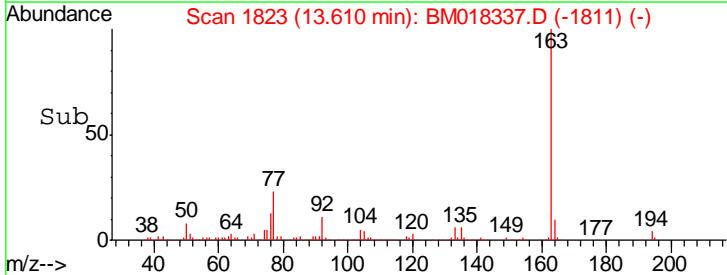
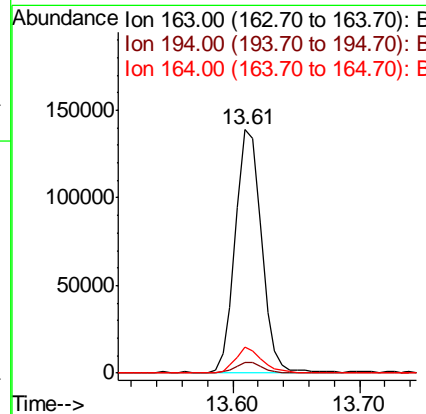
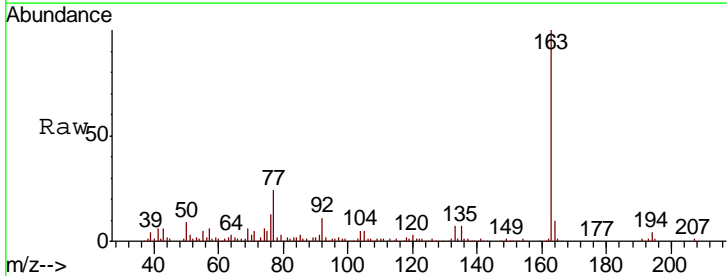
Ion	Ratio	Lower	Upper
172	100		
171	35.6	28.3	42.5
170	23.2	18.1	27.1

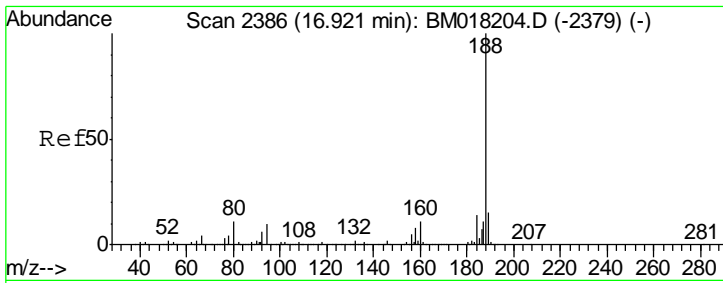


#50
 Dimethylphthalate
 Concen: 8.587 ng
 RT: 13.61 min Scan# 1823
 Delta R.T. -0.03 min
 Lab File: BM018337.D
 Acq: 20 Dec 2018 19:21

Tgt Ion:163 Resp: 199914

Ion	Ratio	Lower	Upper
163	100		
194	4.2	3.1	4.7
164	10.5	7.9	11.9

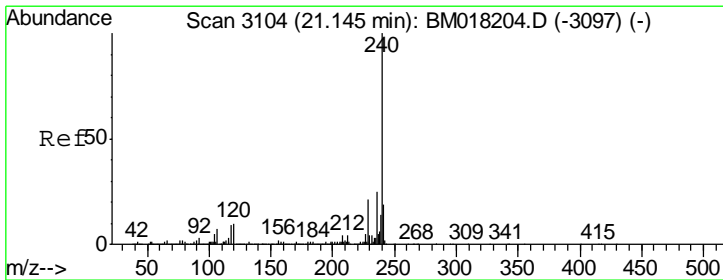
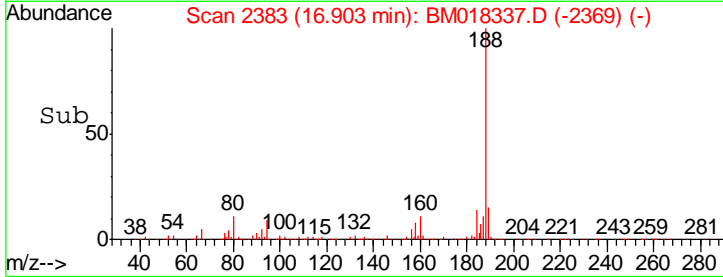
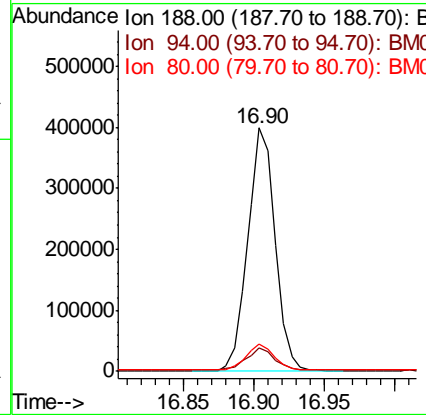
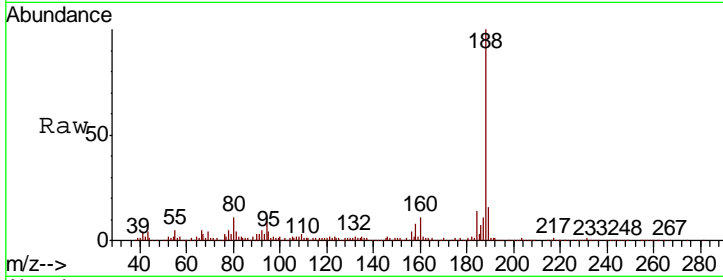




#64
 Phenanthrene-d10
 Concen: 20.000 ng
 RT: 16.90 min Scan# 2383
 Delta R.T. -0.02 min
 Lab File: BM018337.D
 Acq: 20 Dec 2018 19:21

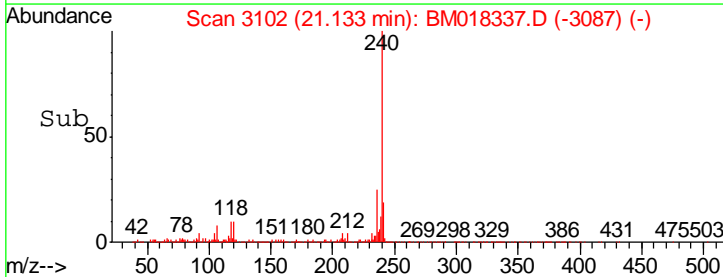
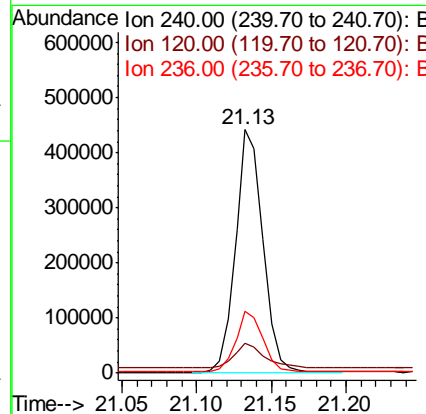
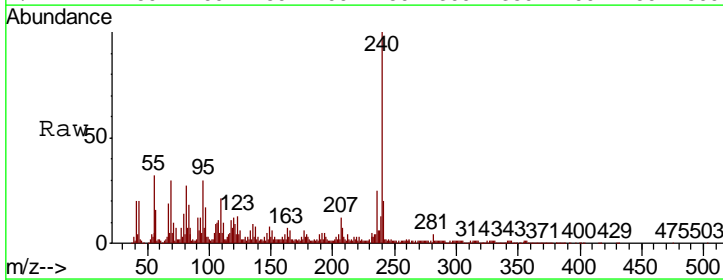
Instrument :
 BNA_M
 ClientSampled :
 P001-SS012-1218-01

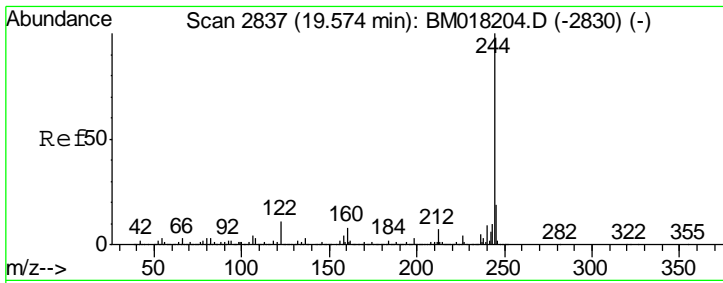
Tgt Ion	Resp	Lower	Upper
188	100		
94	9.4	8.0	12.0
80	11.5	9.0	13.6



#76
 Chrysene-d12
 Concen: 20.000 ng
 RT: 21.13 min Scan# 3102
 Delta R.T. -0.01 min
 Lab File: BM018337.D
 Acq: 20 Dec 2018 19:21

Tgt Ion	Resp	Lower	Upper
240	100		
120	12.0	8.2	12.2
236	25.2	20.3	30.5



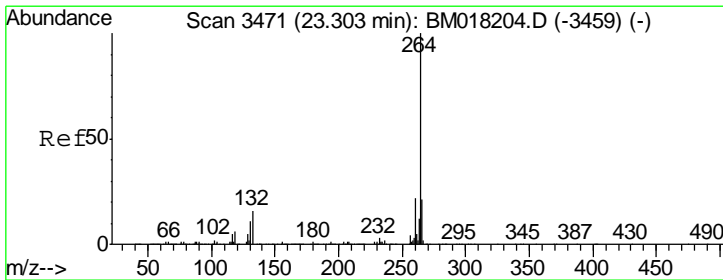
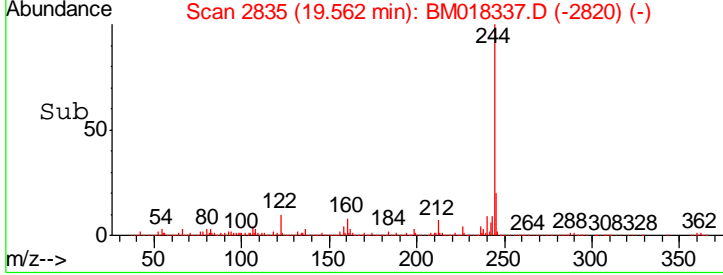
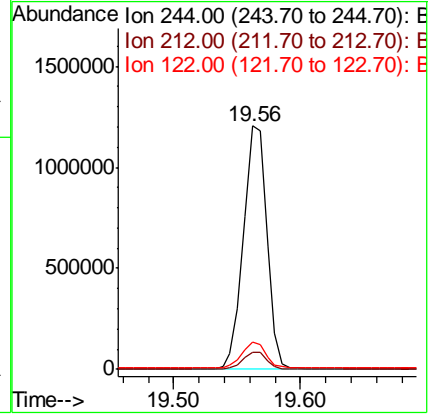
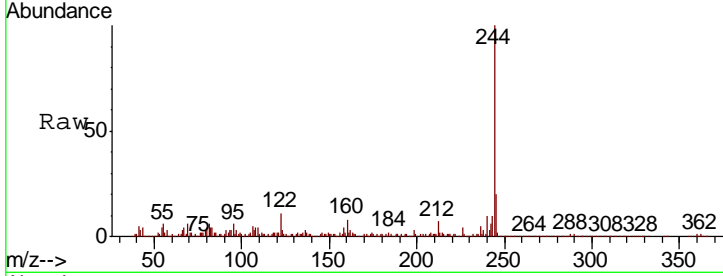


#79
 Terphenyl-d14
 Concen: 61.751 ng
 RT: 19.56 min Scan# 2835
 Delta R.T. -0.01 min
 Lab File: BM018337.D
 Acq: 20 Dec 2018 19:21

Instrument :
 BNA_M
 ClientSampled :
 P001-SS012-1218-01

Tgt Ion: 244 Resp: 1539024

Ion	Ratio	Lower	Upper
244	100		
212	7.2	5.8	8.8
122	11.0	9.0	13.6



#87
 Perylene-d12
 Concen: 20.000 ng
 RT: 23.31 min Scan# 3472
 Delta R.T. 0.01 min
 Lab File: BM018337.D
 Acq: 20 Dec 2018 19:21

Tgt Ion: 264 Resp: 547007

Ion	Ratio	Lower	Upper
264	100		
260	23.9	17.5	26.3
265	22.8	17.3	25.9

