

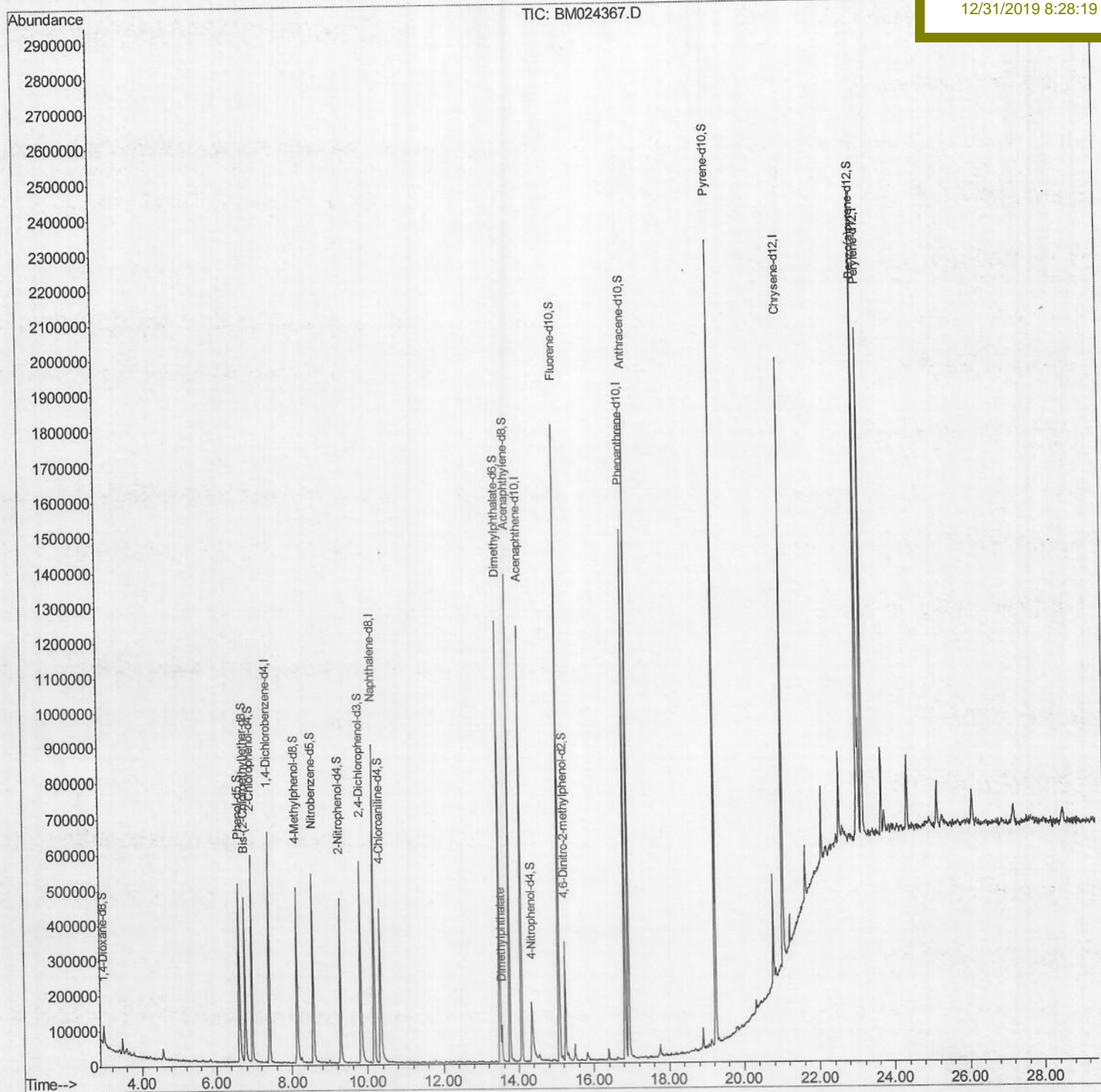
Data Path : Z:\svoasrv\HPCHEM1\BNA M\Data\BM123019\  
 Data File : BM024367.D  
 Acq On : 30 Dec 2019 11:14  
 Operator : JU  
 Sample : K6278-19  
 Misc :  
 ALS Vial : 3 Sample Multiplier: 1

Instrument :  
 BNA\_M  
 ClientSampled :  
 C0C72

Quant Time: Dec 30 14:19:14 2019  
 Quant Method : Z:\SVOASRV\HPCHEM1\BNA\_M\METHODS\SOM-EPA-BM121719MA.M  
 Quant Title : SVOA CALIBRATION  
 QLast Update : Mon Dec 30 14:11:26 2019  
 Response via : Initial Calibration

Manual Integrations  
 APPROVED

mohammad  
 12/31/2019 8:28:19 AM



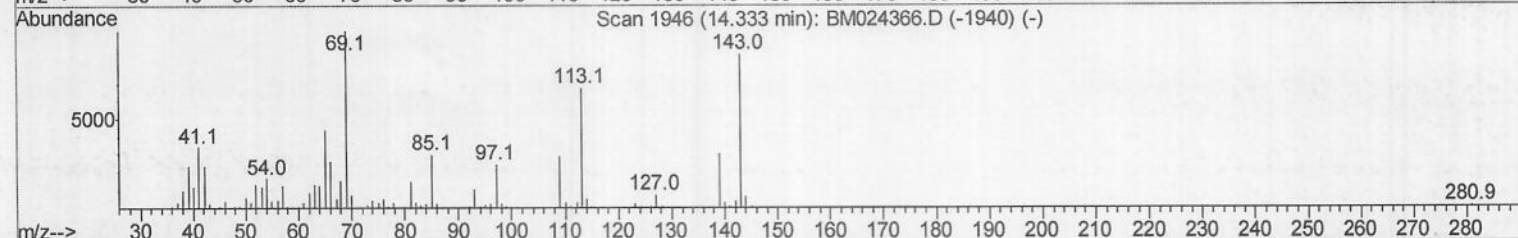
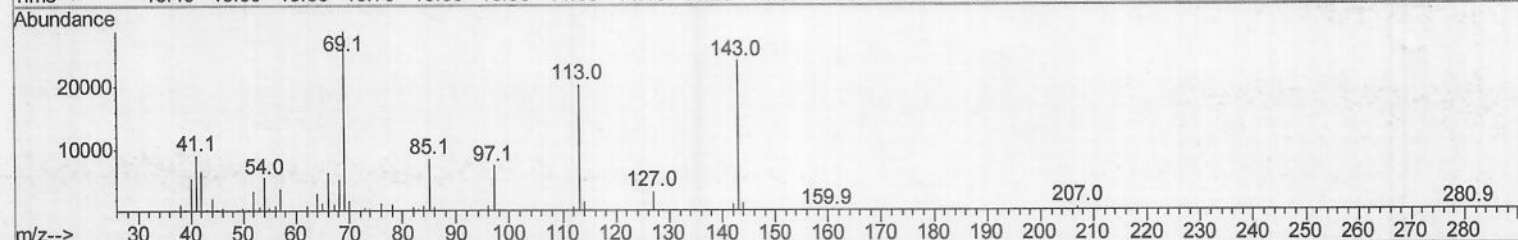
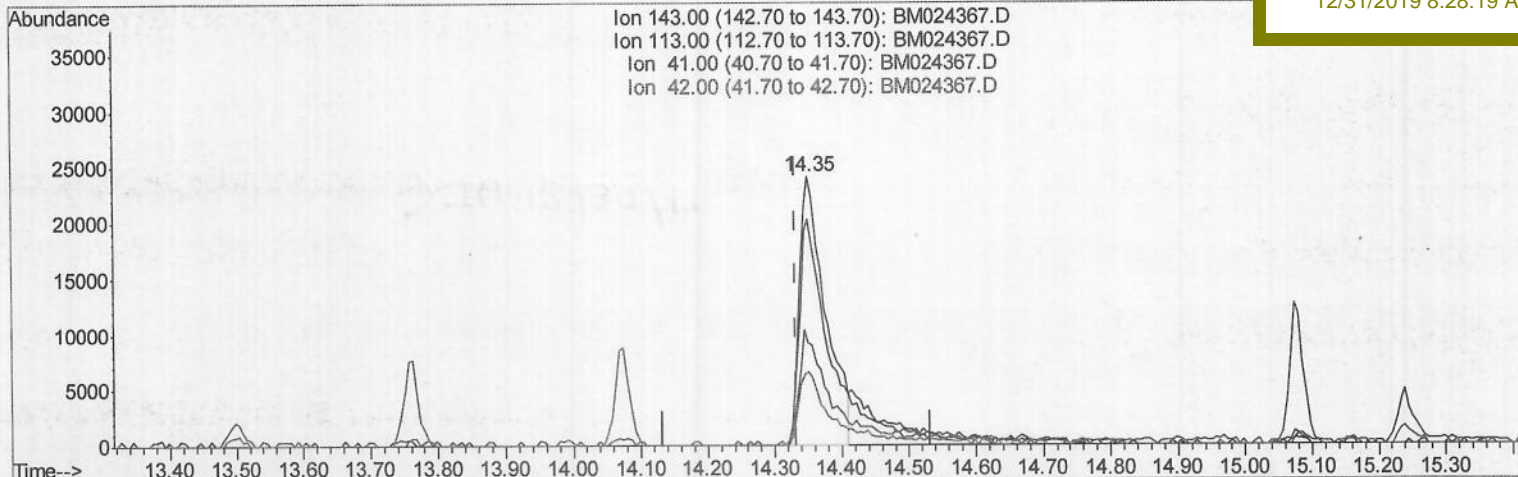
Data Path : Z:\svoasrv\HPCHEM1\BNA M\Data\BM123019\  
 Data File : BM024367.D  
 Acq On : 30 Dec 2019 11:14  
 Operator : JU  
 Sample : K6278-19  
 Misc :  
 ALS Vial : 3 Sample Multiplier: 1

Instrument :  
 BNA\_M  
 ClientSampleId :  
 C0C72

Quant Time: Dec 30 14:18:05 2019  
 Quant Method : Z:\SVOASRV\HPCHEM1\BNA\_M\METHODS\SOM-EPA-BM121719MA.M  
 Quant Title : SVOA CALIBRATION  
 QLast Update : Mon Dec 30 14:11:26 2019  
 Response via : Initial Calibration

Manual Integrations  
 APPROVED

mohammad  
 12/31/2019 8:28:19 AM



TIC: BM024367.D

(52) 4-Nitrophenol-d4 (S)

14.351min (+0.018) 12.49ng/ul

response 64708

Ion	Exp%	Act%
143.00	100	100
113.00	73.60	84.14
41.00	33.90	38.00
42.00	22.80	27.24



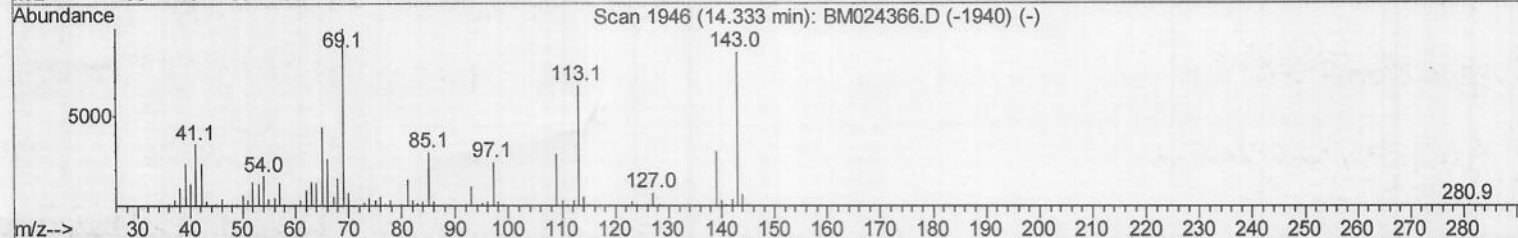
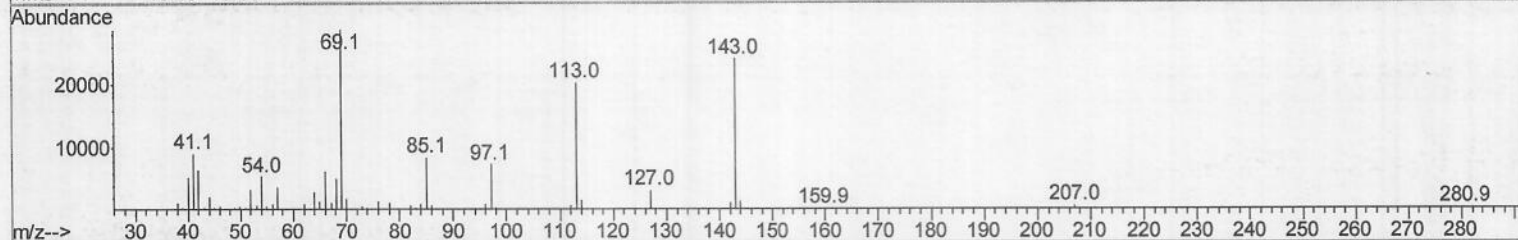
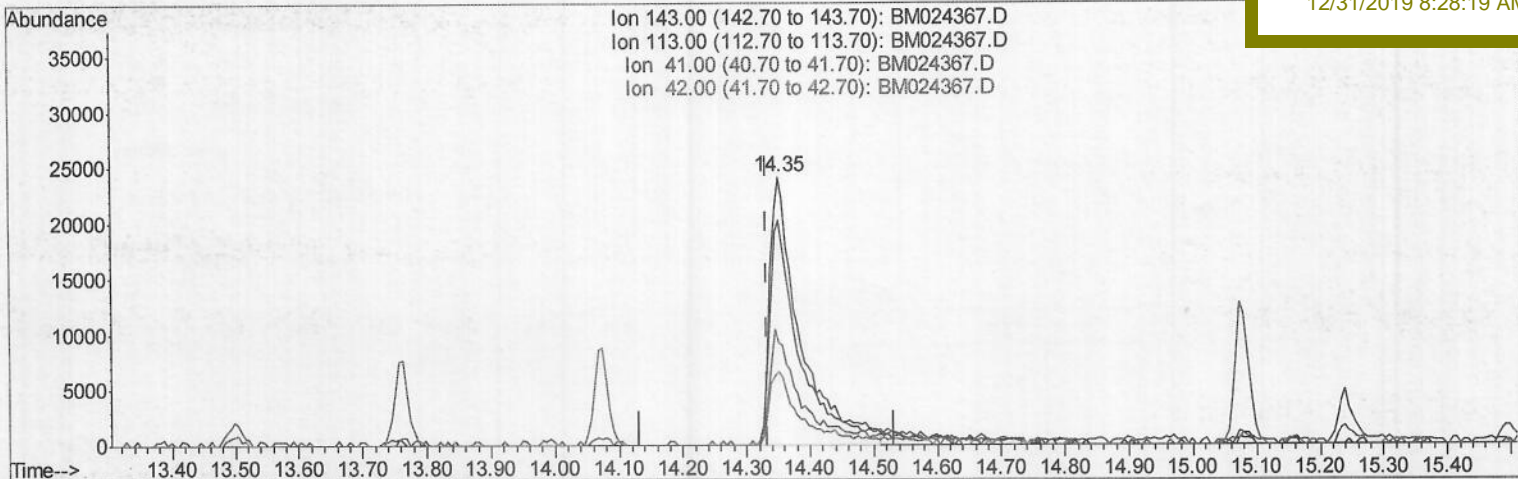
Data Path : Z:\svoasrv\HPCHEM1\BNA M\Data\BM123019\  
 Data File : BM024367.D  
 Acq On : 30 Dec 2019 11:14  
 Operator : JU  
 Sample : K6278-19  
 Misc :  
 ALS Vial : 3 Sample Multiplier: 1

Instrument :  
 BNA\_M  
 ClientSampled :  
 C0C72

Quant Time: Dec 30 14:18:05 2019  
 Quant Method : Z:\SVOASRV\HPCHEM1\BNA\_M\METHODS\SOM-EPA-BM121719MA.M  
 Quant Title : SVOA CALIBRATION  
 QLast Update : Mon Dec 30 14:11:26 2019  
 Response via : Initial Calibration

Manual Integrations  
 APPROVED

mohammad  
 12/31/2019 8:28:19 AM



TIC: BM024367.D

(52) 4-Nitrophenol-d4 (S)

14.351min (+0.018) 15.38ng/ul m > JU 12/30/19

response 79704

Ion	Exp%	Act%
143.00	100	100
113.00	73.60	84.14
41.00	33.90	38.00
42.00	22.80	27.24

Data Path : Z:\svoasrv\HPCHEM1\BNA M\Data\BM123019\  
 Data File : BM024367.D  
 Acq On : 30 Dec 2019 11:14  
 Operator : JU  
 Sample : K6278-19  
 Misc :  
 ALS Vial : 3 Sample Multiplier: 1

Instrument :  
 BNA\_M  
 Client Sampled :  
 C0C72

Quant Time: Dec 30 14:19:14 2019  
 Quant Method : Z:\SVOASRV\HPCHEM1\BNA\_M\METHODS\SOM-EPA-BM121719MA.M  
 Quant Title : SVOA CALIBRATION  
 QLast Update : Mon Dec 30 14:11:26 2019  
 Response via : Initial Calibration

Manual Integrations  
 APPROVED

mohammad  
 12/31/2019 8:28:19 AM

Internal Standards	R.T.	QIon	Response	Conc	Units	Dev (Min)
-----						
1) 1,4-Dichlorobenzene-d4	7.41	152	172052	20.00	ng/ul	0.00
18) Naphthalene-d8	10.17	136	694518	20.00	ng/ul	0.00
36) Acenaphthene-d10	14.07	164	390288	20.00	ng/ul	0.00
62) Phenanthrene-d10	16.83	188	792330	20.00	ng/ul	0.00
78) Chrysene-d12	21.05	240	755128	20.00	ng/ul	0.00
86) Perylene-d12	23.17	264	929841	20.00	ng/ul	0.00
System Monitoring Compounds						
3) 1,4-Dioxane-d8	2.99	96	33396	8.57	ng/uL	0.00
5) Phenol-d5	6.62	99	331354	20.34	ng/ul	0.00
7) Bis-(2-Chloroethyl) ether-d	6.76	67	248136	25.40	ng/ul	0.00
9) 2-Chlorophenol-d4	6.95	132	254239	21.88	ng/ul	0.00
13) 4-Methylphenol-d8	8.14	113	207916	15.61	ng/ul	0.00
19) Nitrobenzene-d5	8.56	128	130020	26.05	ng/ul	0.00
22) 2-Nitrophenol-d4	9.28	143	145387	26.50	ng/ul	0.00
26) 2,4-Dichlorophenol-d3	9.82	165	233242	21.87	ng/ul	0.00
29) 4-Chloroaniline-d4	10.34	131	292841	22.60	ng/ul	0.00
44) Dimethylphthalate-d6	13.50	166	819850	28.41	ng/ul	0.00
47) Acenaphthylene-d8	13.76	160	904504	26.15	ng/ul	0.00
52) 4-Nitrophenol-d4	14.35	143	79704m	15.38	ng/ul	0.02
58) Fluorene-d10	15.08	176	667308	26.38	ng/ul	0.00
63) 4,6-Dinitro-2-methylphenol	15.24	200	72162	14.93	ng/ul	0.00
71) Anthracene-d10	16.93	188	942882	26.15	ng/ul	0.00
79) Pyrene-d10	19.24	212	1069046	29.72	ng/ul	0.00
90) Benzo(a)pyrene-d12	23.04	264	1212151	26.24	ng/ul	0.00
Target Compounds						Ovalue
45) Dimethylphthalate	13.55	163	60080	2.003	ng/ul	96
-----						

(#) = qualifier out of range (m) = manual integration (+) = signals summed

JU 12/30/19