

Data Path : Z:\SVOASRV\HPCHEM1\BNA M\DATA\BM010920\  
 Data File : BM024444.D  
 Acq On : 10 Jan 2020 02:50  
 Operator : JU  
 Sample : K6466-07  
 Misc :  
 ALS Vial : 24 Sample Multiplier: 1

Instrument :  
 BNA\_M  
 ClientSampleId :  
 H0BQ4

Integration Parameters: LSCINT.P

Integrator: RTE  
 Smoothing : OFF  
 Sampling : 1  
 Start Thrs: 0.2  
 Stop Thrs : 0

Filtering: 5  
 Min Area: 0.1 % of largest Peak  
 Max Peaks: 100  
 Peak Location: TOP

If leading or trailing edge < 100 prefer < Baseline drop else tangent >  
 Peak separation: 5

Method : Z:\SVOASRV\HPCHEM1\BNA\_M\METHODS\SOM-EPA-BM010820MA.M  
 Title : SVOA CALIBRATION

Signal : TIC

peak #	R.T. min	first scan	max scan	last scan	PK TY	peak height	corr. area	corr. % max.	% of total
1	6.681	641	645	654	rVB	273738	462159	6.72%	0.674%
2	6.839	667	672	681	rVB	938696	1444880	21.00%	2.108%
3	7.034	699	705	716	rBV	1074162	1654650	24.05%	2.414%
4	7.492	777	783	792	rVB	1389071	2118593	30.80%	3.090%
5	8.198	898	903	912	rVB	732533	1100566	16.00%	1.605%
6	8.628	970	976	983	rVB	1293598	2025232	29.44%	2.954%
7	9.345	1091	1098	1106	rBV	833268	1296568	18.85%	1.891%
8	9.880	1183	1189	1198	rBV	1367603	2164087	31.46%	3.157%
9	10.251	1246	1252	1262	rVB	1688452	2762873	40.16%	4.030%
10	10.386	1271	1275	1284	rVB2	84286	149102	2.17%	0.217%
11	11.851	1520	1524	1529	rVB3	25661	40201	0.58%	0.059%
12	12.751	1675	1677	1680	rVB4	7140	6909	0.10%	0.010%
13	12.986	1716	1717	1721	rBV	7971	8071	0.12%	0.012%
14	13.421	1788	1791	1794	rVB2	7510	8128	0.12%	0.012%
15	13.445	1794	1795	1799	rBV	6761	6921	0.10%	0.010%
16	13.557	1808	1814	1819	rBV	2566308	3521286	51.19%	5.136%
17	13.604	1819	1822	1828	rVB	144576	189984	2.76%	0.277%
18	13.821	1852	1859	1866	rBV	2900099	4072040	59.19%	5.940%
19	14.139	1906	1913	1920	rVV	2227439	3327663	48.37%	4.854%
20	14.192	1920	1922	1928	rVB3	8797	9562	0.14%	0.014%
21	14.339	1941	1947	1959	rBV2	157954	288356	4.19%	0.421%
22	14.510	1970	1976	1979	rVB5	4611	9811	0.14%	0.014%
23	14.568	1982	1986	1987	rBV	6563	6923	0.10%	0.010%
24	14.992	2054	2058	2064	rVB4	6771	11412	0.17%	0.017%
25	15.045	2064	2067	2072	rBV4	5411	7144	0.10%	0.010%
26	15.139	2076	2083	2090	rBV	3513660	4948298	71.93%	7.218%
27	15.251	2095	2102	2111	rBV	744047	1051258	15.28%	1.533%
28	15.380	2119	2124	2128	rVB4	36689	53629	0.78%	0.078%
29	15.704	2174	2179	2180	rVV4	6418	8296	0.12%	0.012%
30	15.833	2199	2201	2207	rVB5	7723	12287	0.18%	0.018%
31	15.921	2213	2216	2222	rVB6	15222	25833	0.38%	0.038%
32	16.274	2275	2276	2284	rBV6	4633	8885	0.13%	0.013%
33	16.480	2310	2311	2316	rBV5	6597	7992	0.12%	0.012%
34	16.574	2321	2327	2329	rBV5	8549	11801	0.17%	0.017%

Data Path : Z:\SVOASRV\HPCHEM1\BNA M\DATA\BM010920\  
 Data File : BM024444.D  
 Acq On : 10 Jan 2020 02:50  
 Operator : JU  
 Sample : K6466-07  
 Misc :  
 ALS Vial : 24 Sample Multiplier: 1

Instrument :  
 BNA\_M  
 ClientSampleId :  
 H0BQ4

## Integration Parameters: LSCINT.P

Integrator: RTE  
 Smoothing : OFF  
 Sampling : 1  
 Start Thrs: 0.2  
 Stop Thrs : 0

Filtering: 5  
 Min Area: 0.1 % of largest Peak  
 Max Peaks: 100  
 Peak Location: TOP

If leading or trailing edge < 100 prefer < Baseline drop else tangent >  
 Peak separation: 5

Method : Z:\SVOASRV\HPCHEM1\BNA\_M\METHODS\SOM-EPA-BM010820MA.M  
 Title : SVOA CALIBRATION

35	16.668	2340	2343	2347	rBV3	10599	15127	0.22%	0.022%
36	16.698	2347	2348	2353	rVB4	6589	8035	0.12%	0.012%
37	16.768	2357	2360	2363	rBV4	5572	7775	0.11%	0.011%
38	16.886	2371	2380	2389	rVB	2644206	3545412	51.54%	5.172%
39	16.986	2389	2397	2407	rBV	4041897	5498794	79.93%	8.021%
40	17.309	2449	2452	2455	rBV4	7433	9372	0.14%	0.014%
41	17.827	2534	2540	2546	rBV	209179	282879	4.11%	0.413%
42	18.115	2585	2589	2592	rBV6	10370	19028	0.28%	0.028%
43	18.262	2611	2614	2619	rVB4	13866	20303	0.30%	0.030%
44	18.427	2639	2642	2645	rBV4	5802	7374	0.11%	0.011%
45	18.503	2650	2655	2659	rVB6	8609	14974	0.22%	0.022%
46	18.545	2659	2662	2665	rVB5	7853	8008	0.12%	0.012%
47	18.586	2665	2669	2672	rBV5	7193	11137	0.16%	0.016%
48	18.686	2682	2686	2691	rVB4	22440	32109	0.47%	0.047%
49	18.856	2712	2715	2718	rVB5	8452	7855	0.11%	0.011%
50	18.921	2721	2726	2731	rVB	43030	61989	0.90%	0.090%
51	18.968	2731	2734	2737	rBV5	11208	14920	0.22%	0.022%
52	19.121	2756	2760	2765	rBV3	85702	120582	1.75%	0.176%
53	19.174	2765	2769	2772	rVB2	35652	54901	0.80%	0.080%
54	19.286	2782	2788	2796	rBV	5009329	6490621	94.35%	9.468%
55	19.427	2810	2812	2815	rBV4	7718	7447	0.11%	0.011%
56	19.627	2844	2846	2848	rBV3	10910	9878	0.14%	0.014%
57	19.903	2891	2893	2895	rVB3	13927	11751	0.17%	0.017%
58	20.403	2975	2978	2983	rBV6	23009	34760	0.51%	0.051%
59	20.850	3050	3054	3064	rBV2	364424	652514	9.49%	0.952%
60	21.092	3089	3095	3100	rBV	3258789	3908275	56.81%	5.701%
61	21.303	3128	3131	3138	rBV	139930	171063	2.49%	0.250%
62	21.727	3200	3203	3208	rBV	258190	317856	4.62%	0.464%
63	22.174	3276	3279	3286	rVB	375201	475269	6.91%	0.693%
64	22.662	3358	3362	3372	rVB	487971	729904	10.61%	1.065%
65	23.091	3428	3435	3444	rVB	4144846	6879127	100.00%	10.034%
66	23.221	3449	3457	3467	rVB	2566348	5093623	74.04%	7.430%
67	23.815	3553	3558	3564	rBV	396496	693779	10.09%	1.012%
68	24.521	3674	3678	3686	rVB3	268966	518360	7.54%	0.756%

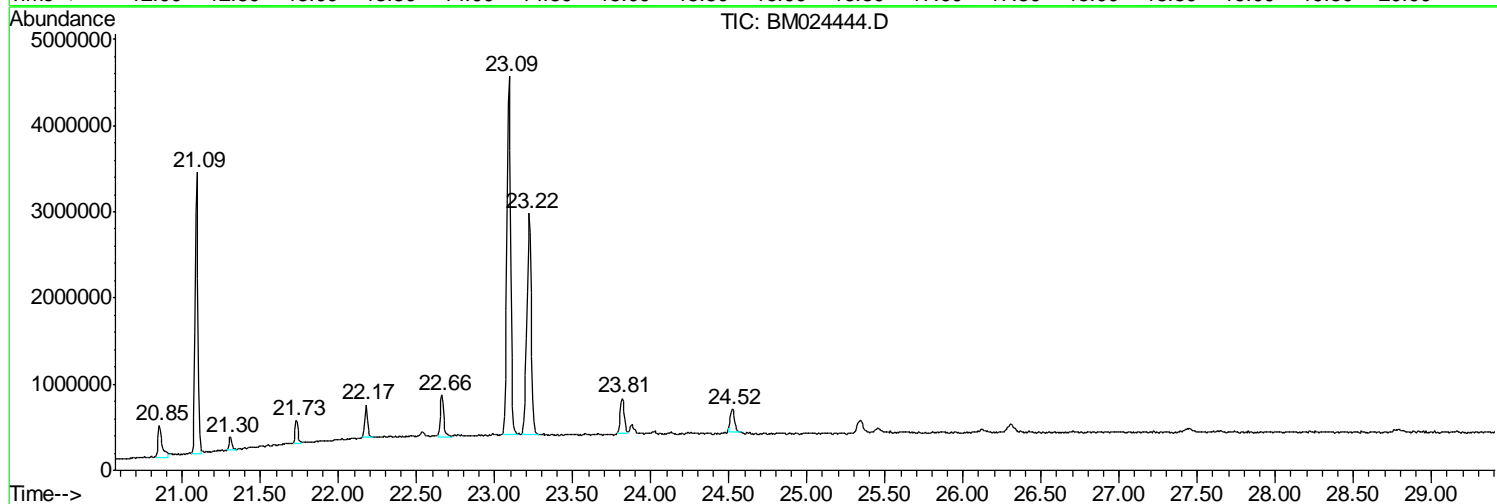
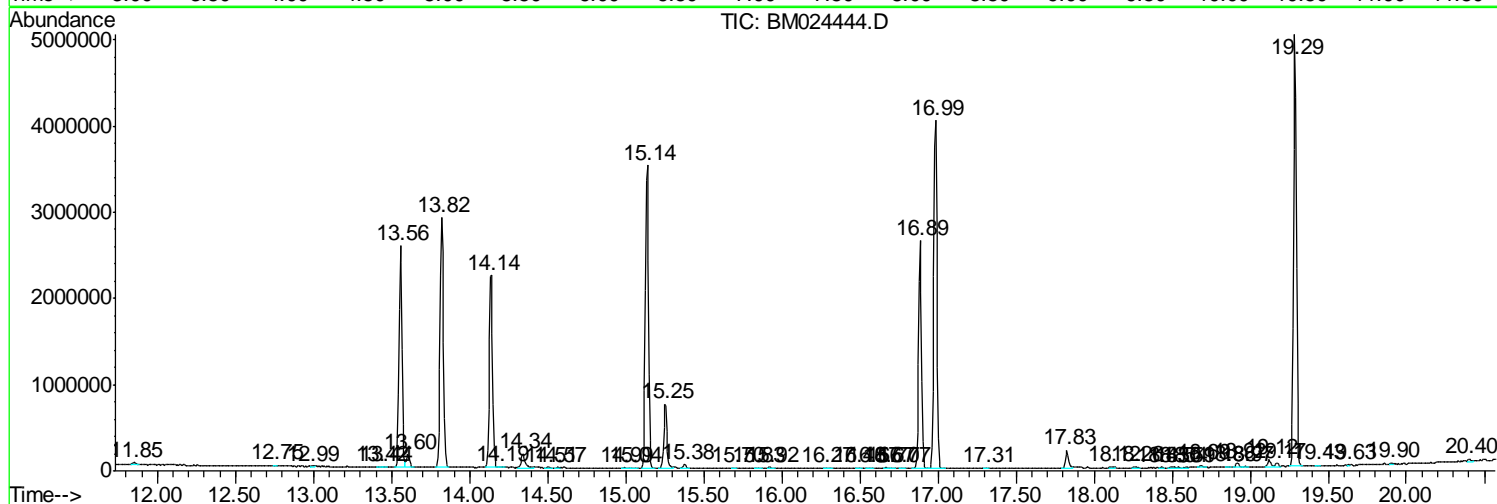
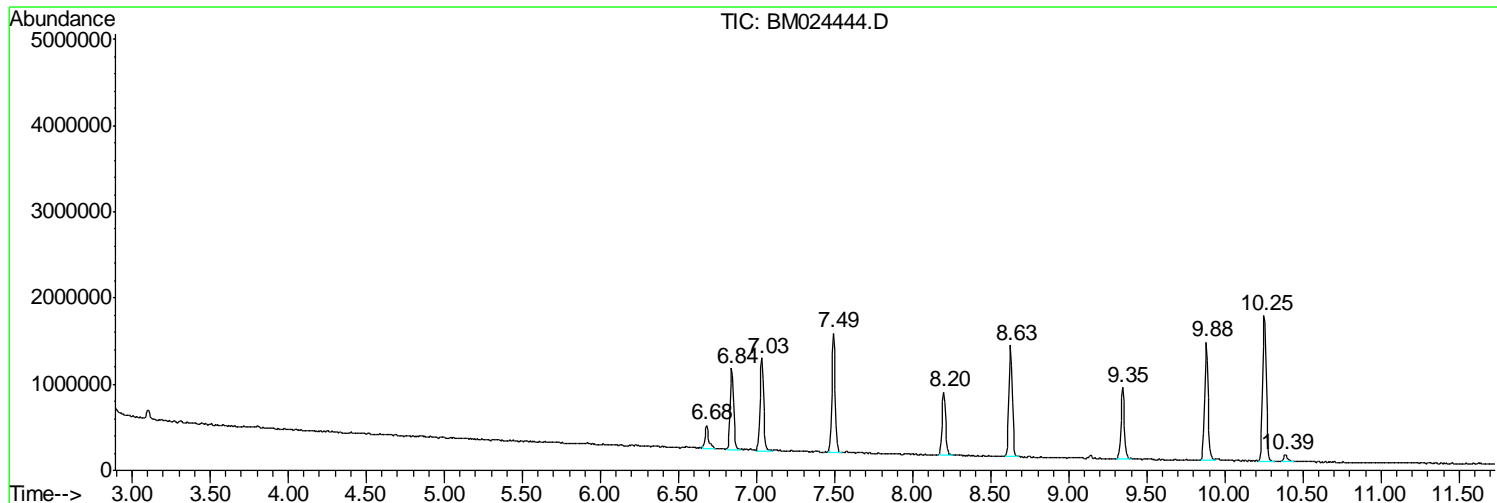
Sum of corrected areas: 68556201

Data Path : Z:\SVOASRV\HPCHEM1\BNA M\DATA\BM010920\  
 Data File : BM024444.D  
 Acq On : 10 Jan 2020 02:50  
 Operator : JU  
 Sample : K6466-07  
 Misc :  
 ALS Vial : 24 Sample Multiplier: 1

**Instrument :**  
 BNA\_M  
**ClientSampleId :**  
 H0BQ4

Quant Method : Z:\SVOASRV\HPCHEM1\BNA\_M\METHODS\SOM-EPA-BM010820MA.M  
 Quant Title : SVOA CALIBRATION

TIC Library : C:\DATABASE\NIST11.L  
 TIC Integration Parameters: LSCINT.P



Data Path : Z:\SVOASRV\HPCHEM1\BNA M\DATA\BM010920\  
 Data File : BM024444.D  
 Acq On : 10 Jan 2020 02:50  
 Operator : JU  
 Sample : K6466-07  
 Misc :  
 ALS Vial : 24 Sample Multiplier: 1

Instrument :  
 BNA\_M  
 ClientSampled :  
 H0BQ4

Quant Method : Z:\SVOASRV\HPCHEM1\BNA\_M\METHODS\SOM-EPA-BM010820MA.M  
 Quant Title : SVOA CALIBRATION

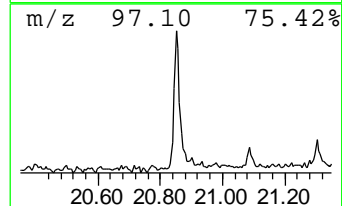
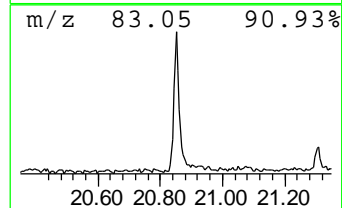
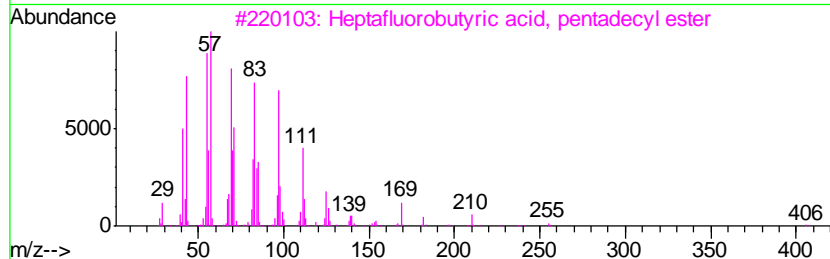
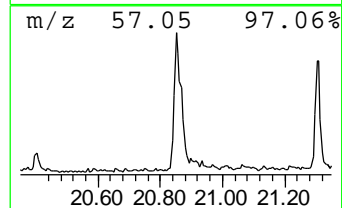
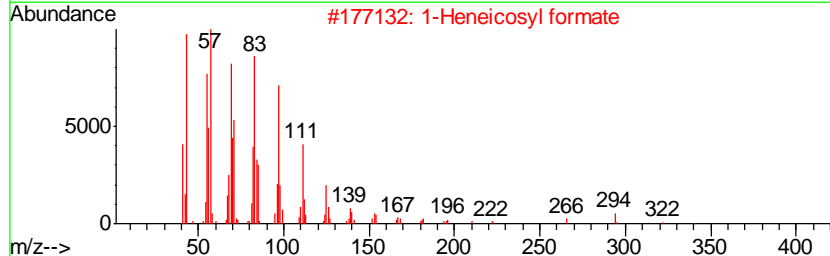
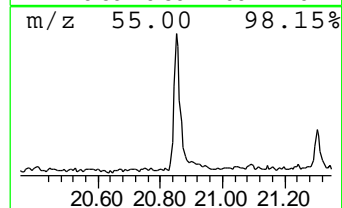
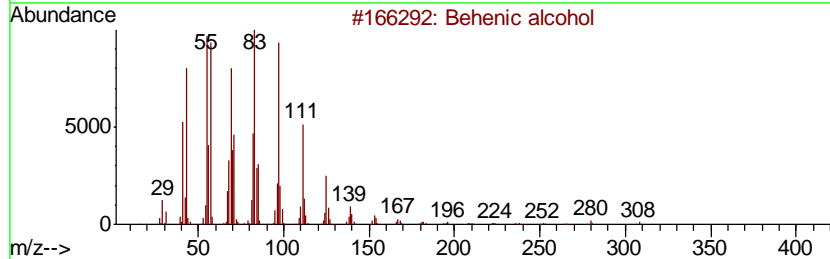
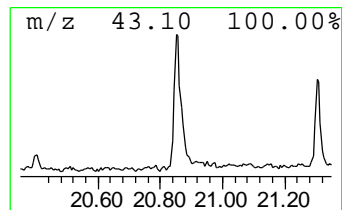
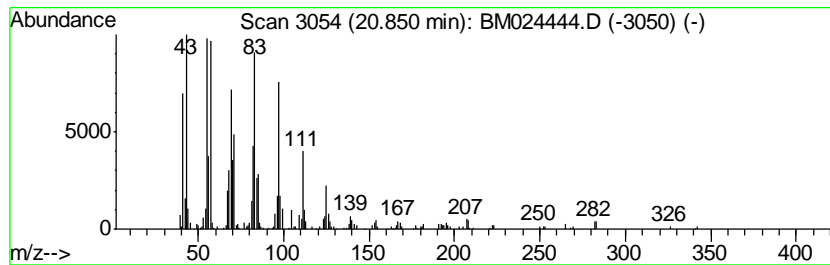
TIC Library : C:\DATABASE\NIST11.L  
 TIC Integration Parameters: LSCINT.P

\*\*\*\*\*  
 Peak Number 1 Behenic alcohol Concentration Rank 1

R.T.	EstConc	Area	Relative to ISTD	R.T.
20.85	3.34 ng/ul	652514	Chrysene-d12	21.09

Hit#	of	Tentative ID	MW	MolForm	CAS#	Qual
1	5	Behenic alcohol	326	C22H46O	000661-19-8	95
2		1-Heneicosyl formate	340	C22H44O2	077899-03-7	94
3		Heptafluorobutyric acid, pentade...	424	C19H31F7O2	959261-23-5	94
4		n-Tetracosanol-1	354	C24H50O	000506-51-4	94
5		1-Heptacosanol	396	C27H56O	002004-39-9	94



Data Path : Z:\SVOASRV\HPCHEM1\BNA M\DATA\BM010920\  
 Data File : BM024444.D  
 Acq On : 10 Jan 2020 02:50  
 Operator : JU  
 Sample : K6466-07  
 Misc :  
 ALS Vial : 24 Sample Multiplier: 1

Instrument :  
 BNA\_M  
 ClientSampled :  
 H0BQ4

Quant Method : Z:\SVOASRV\HPCHEM1\BNA\_M\METHODS\SOM-EPA-BM010820MA.M  
 Quant Title : SVOA CALIBRATION

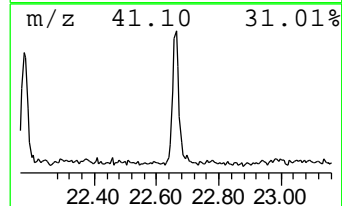
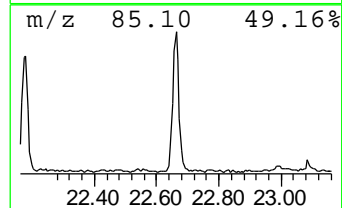
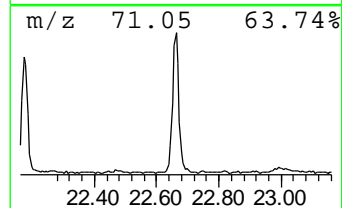
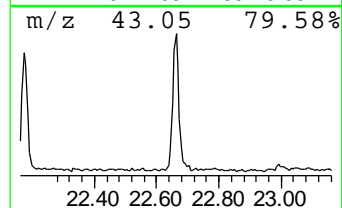
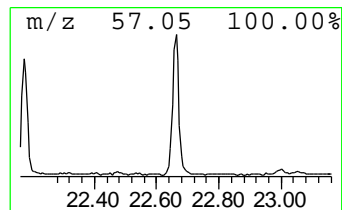
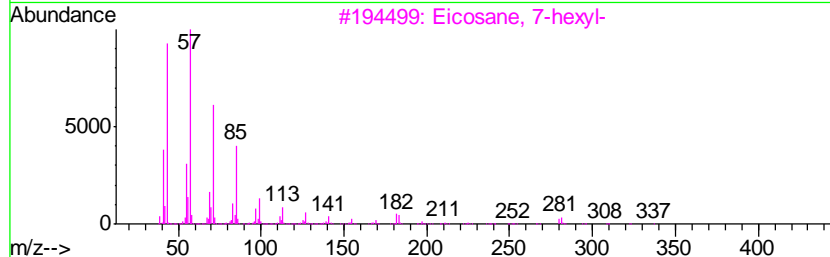
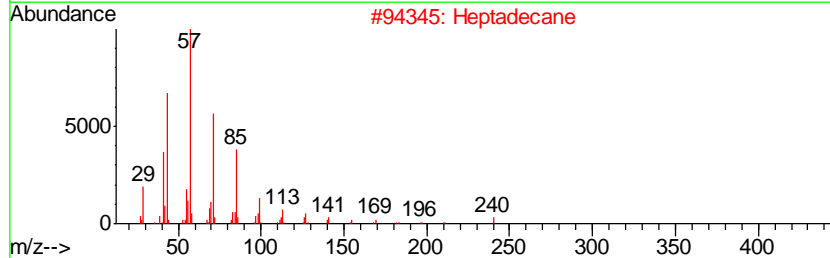
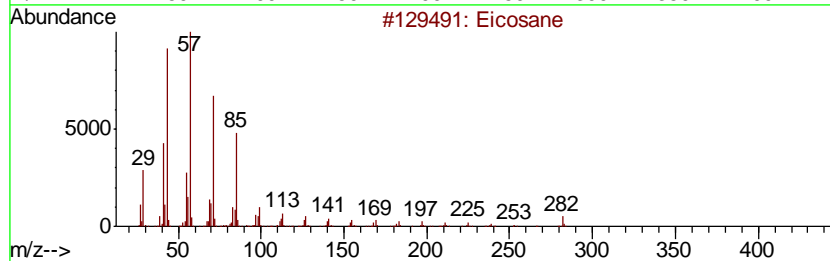
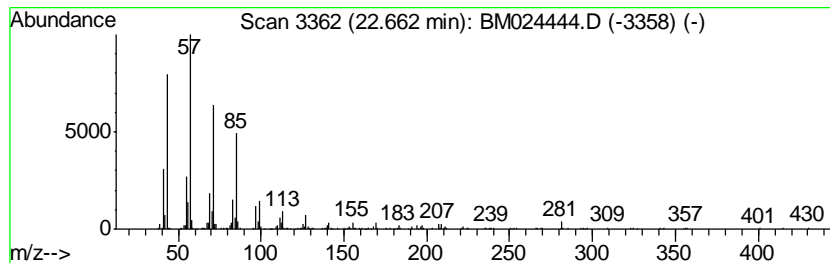
TIC Library : C:\DATABASE\NIST11.L  
 TIC Integration Parameters: LSCINT.P

\*\*\*\*\*  
 Peak Number 2 (DEL) Alkane: Straight-Chai... Concentration Rank 2

R.T.	EstConc	Area	Relative to ISTD	R.T.
22.66	2.87 ng/ul	729904	Perylene-d12	23.22

Hit#	of	Tentative ID	MW	MolForm	CAS#	Qual
1	5	Eicosane	282	C20H42	000112-95-8	95
2		Heptadecane	240	C17H36	000629-78-7	91
3		Eicosane, 7-hexyl-	366	C26H54	055333-99-8	91
4		Tetracosane, 11-decyl-	479	C34H70	055429-84-0	90
5		Hexacosane	366	C26H54	000630-01-3	90



Data Path : Z:\SVOASRV\HPCHEM1\BNA M\DATA\BM010920\  
 Data File : BM024444.D  
 Acq On : 10 Jan 2020 02:50  
 Operator : JU  
 Sample : K6466-07  
 Misc :  
 ALS Vial : 24 Sample Multiplier: 1

Instrument :  
 BNA\_M  
 ClientSampleId :  
 H0BQ4

Quant Method : Z:\SVOASRV\HPCHEM1\BNA\_M\METHODS\SOM-EPA-BM010820MA.M  
 Quant Title : SVOA CALIBRATION

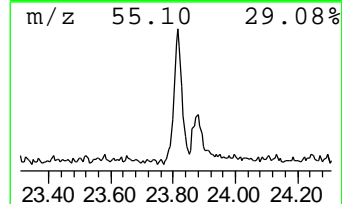
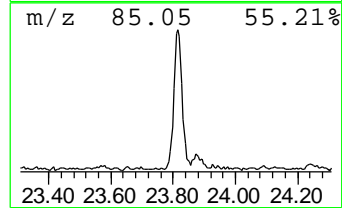
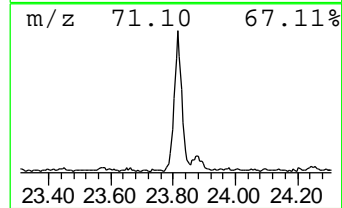
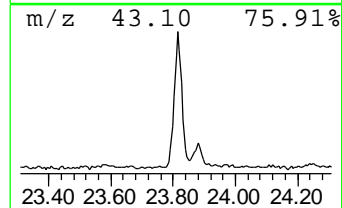
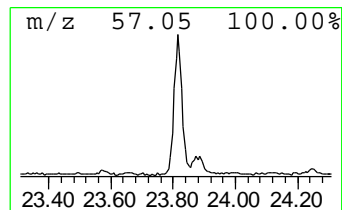
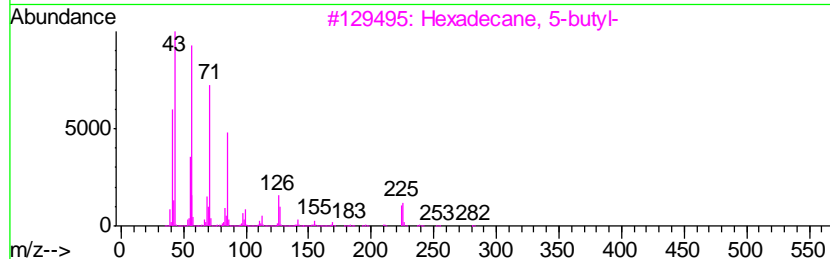
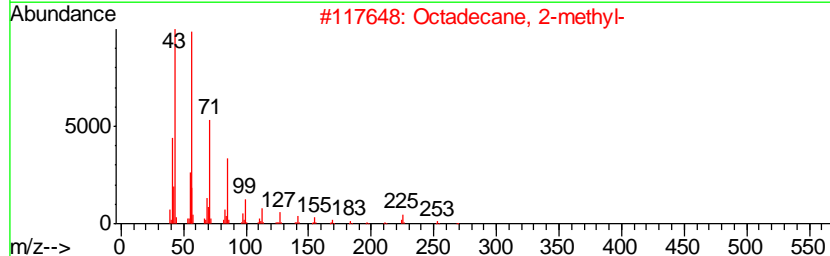
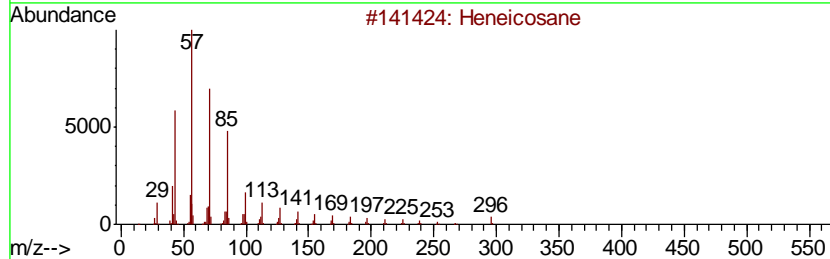
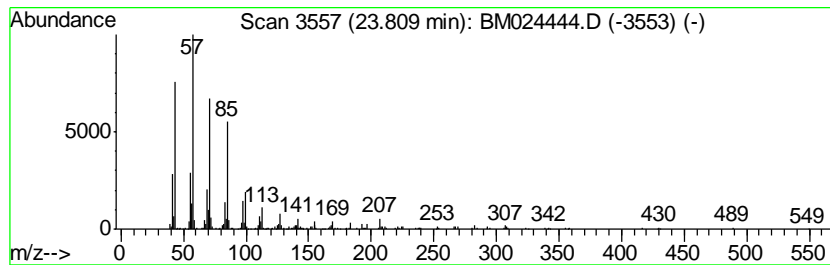
TIC Library : C:\DATABASE\NIST11.L  
 TIC Integration Parameters: LSCINT.P

\*\*\*\*\*  
 Peak Number 3 (DEL) Alkane: Straight-Chai... Concentration Rank 3

R.T.	EstConc	Area	Relative to ISTD	R.T.
23.81	2.72 ng/ul	693779	Perylene-d12	23.22

Hit#	of	Tentative ID	MW	MolForm	CAS#	Qual
1	5	Heneicosane	296	C21H44	000629-94-7	96
2		Octadecane, 2-methyl-	268	C19H40	001560-88-9	93
3		Hexadecane, 5-butyl-	282	C20H42	006912-07-8	93
4		Tricosane	324	C23H48	000638-67-5	91
5		Octacosane	394	C28H58	000630-02-4	90



Data Path : Z:\SVOASRV\HPCHEM1\BNA M\DATA\BM010920\  
 Data File : BM024444.D  
 Acq On : 10 Jan 2020 02:50  
 Operator : JU  
 Sample : K6466-07  
 Misc :  
 ALS Vial : 24 Sample Multiplier: 1

Instrument :  
 BNA\_M  
 ClientSampleID :  
 H0BQ4

Quant Method : Z:\SVOASRV\HPCHEM1\BNA\_M\METHODS\SOM-EPA-BM010820MA.M  
 Quant Title : SVOA CALIBRATION

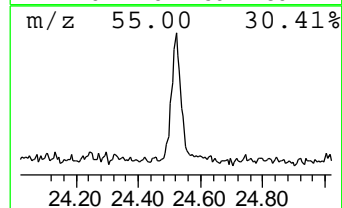
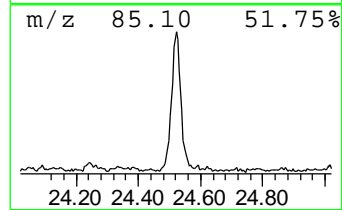
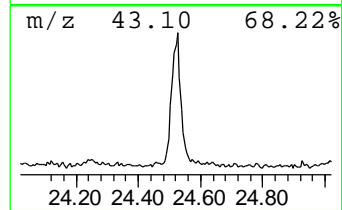
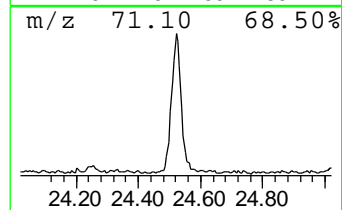
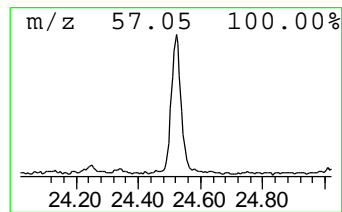
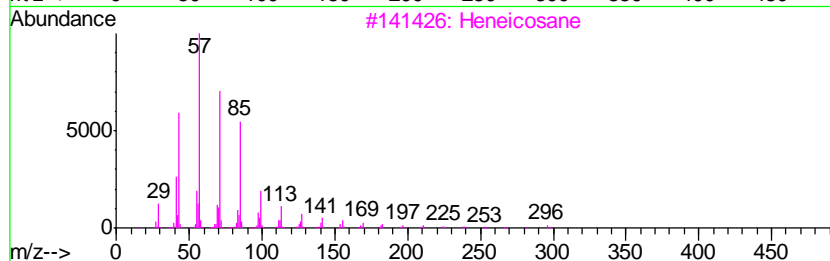
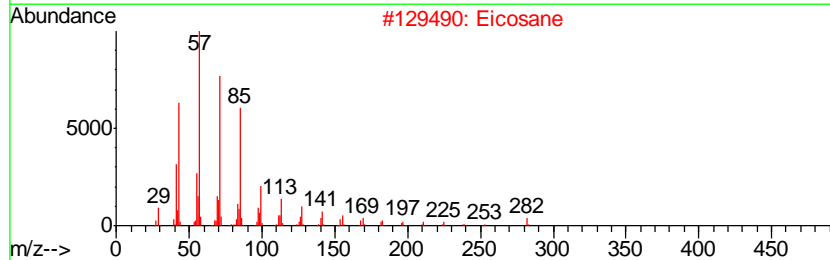
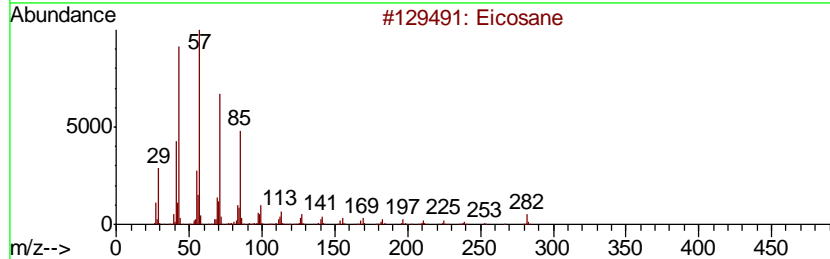
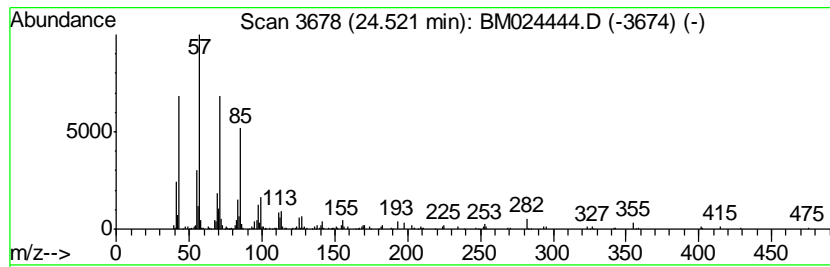
TIC Library : C:\DATABASE\NIST11.L  
 TIC Integration Parameters: LSCINT.P

\*\*\*\*\*  
 Peak Number 4 (DEL) Alkane: Straight-Chai... Concentration Rank 4

R.T.	EstConc	Area	Relative to ISTD	R.T.
24.52	2.04 ng/ul	518360	Perylene-d12	23.22

Hit#	of	Tentative ID	MW	MolForm	CAS#	Qual
1	5	Eicosane	282	C20H42	000112-95-8	93
2		Eicosane	282	C20H42	000112-95-8	90
3		Heneicosane	296	C21H44	000629-94-7	87
4		Heneicosane, 11-decyl-	437	C31H64	055320-06-4	87
5		Octacosane	394	C28H58	000630-02-4	87



Data Path : Z:\SVOASRV\HPCHEM1\BNA\_M\DATA\BM010920\  
Data File : BM024444.D  
Acq On : 10 Jan 2020 02:50  
Operator : JU  
Sample : K6466-07  
Misc :  
ALS Vial : 24 Sample Multiplier: 1

Instrument :  
BNA\_M  
ClientSampleId :  
H0BQ4

Quant Method : Z:\SVOASRV\HPCHEM1\BNA\_M\METHODS\SOM-EPA-BM010820MA.M  
Quant Title : SVOA CALIBRATION

TIC Library : C:\DATABASE\NIST11.L  
TIC Integration Parameters: LSCINT.P

TIC Top Hit name	RT	EstConc	Units	Response	--Internal Standard--			
					#	RT	Resp	Conc
Behenic alcohol	20.85	3.3	ng/ul	652514	5	21.09	3908280	20.0
(DEL) Alkane: Str...	22.66	2.9	ng/ul	729904	6	23.22	5093620	20.0
(DEL) Alkane: Str...	23.81	2.7	ng/ul	693779	6	23.22	5093620	20.0
(DEL) Alkane: Str...	24.52	2.0	ng/ul	518360	6	23.22	5093620	20.0