

Data Path : Z:\SVOASRV\HPCHEM1\BNA M\DATA\BM021320\  
 Data File : BM024873.D  
 Acq On : 14 Feb 2020 02:45  
 Operator : CG/JU  
 Sample : L1404-15  
 Misc :  
 ALS Vial : 18 Sample Multiplier: 1

Instrument :  
 BNA\_M  
 ClientSampleId :  
 CB6N9

Integration Parameters: LSCINT.P

Integrator: RTE  
 Smoothing : OFF  
 Sampling : 1  
 Start Thrs: 0.2  
 Stop Thrs : 0

Filtering: 5  
 Min Area: 0.1 % of largest Peak  
 Max Peaks: 100  
 Peak Location: TOP

If leading or trailing edge < 100 prefer < Baseline drop else tangent >  
 Peak separation: 5

Method : Z:\SVOASRV\HPCHEM1\BNA\_M\METHODS\SOM-EPA-BM020620MA.M  
 Title : SVOA CALIBRATION

Signal : TIC

peak #	R.T. min	first scan	max scan	last scan	PK TY	peak height	corr. area	corr. % max.	% of total
1	6.598	620	631	646	rVB	1153263	1923871	19.02%	1.205%
2	6.751	651	657	673	rVB	1077493	1718234	16.98%	1.076%
3	6.940	682	689	698	rBV	1345326	2165270	21.40%	1.356%
4	7.398	760	767	778	rBV	1713260	2723013	26.92%	1.705%
5	8.110	879	888	900	rBV	1262065	1978257	19.56%	1.239%
6	8.534	951	960	974	rBV	1187354	1963720	19.41%	1.230%
7	9.028	1034	1044	1050	rBV	148857	230974	2.28%	0.145%
8	9.251	1075	1082	1090	rBV	1019609	1701533	16.82%	1.066%
9	9.786	1166	1173	1184	rVV	1539713	2607711	25.78%	1.633%
10	10.151	1227	1235	1241	rBV	2164035	3549596	35.09%	2.223%
11	10.292	1252	1259	1274	rBV	1078035	1985129	19.62%	1.243%
12	11.827	1514	1520	1528	rVB	104181	172549	1.71%	0.108%
13	13.363	1773	1781	1786	rVV	111843	199433	1.97%	0.125%
14	13.469	1794	1799	1805	rVV	2734439	3853209	38.09%	2.413%
15	13.733	1836	1844	1854	rBV	3106692	4771986	47.17%	2.988%
16	13.880	1862	1869	1879	rVB2	95093	230586	2.28%	0.144%
17	14.045	1891	1897	1903	rBV	3233909	4601532	45.49%	2.882%
18	14.110	1903	1908	1913	rBV	358274	480084	4.75%	0.301%
19	14.269	1929	1935	1947	rBV	954730	1615123	15.97%	1.011%
20	14.451	1957	1966	1972	rBV2	215038	404163	4.00%	0.253%
21	15.051	2061	2068	2073	rVV	4150382	5783180	57.17%	3.621%
22	15.104	2073	2077	2083	rVV	370575	527074	5.21%	0.330%
23	15.180	2083	2090	2097	rVV	1137787	1708552	16.89%	1.070%
24	15.268	2102	2105	2112	rVV4	96375	207975	2.06%	0.130%
25	15.404	2124	2128	2140	rVB	135340	223334	2.21%	0.140%
26	15.551	2144	2153	2163	rBV	124849	276914	2.74%	0.173%
27	16.115	2239	2249	2254	rBV3	96529	236252	2.34%	0.148%
28	16.362	2286	2291	2299	rVV5	136854	356581	3.52%	0.223%
29	16.457	2303	2307	2316	rVB	162522	293367	2.90%	0.184%
30	16.557	2316	2324	2328	rBV3	112590	254216	2.51%	0.159%
31	16.615	2330	2334	2340	rVB	208163	292752	2.89%	0.183%
32	16.798	2354	2365	2369	rBV	3589964	5284747	52.24%	3.309%
33	16.845	2369	2373	2377	rVV	4229060	5667527	56.02%	3.549%
34	16.898	2377	2382	2386	rVV	3996385	5622739	55.58%	3.521%

Data Path : Z:\SVOASRV\HPCHEM1\BNA M\DATA\BM021320\  
 Data File : BM024873.D  
 Acq On : 14 Feb 2020 02:45  
 Operator : CG/JU  
 Sample : L1404-15  
 Misc :  
 ALS Vial : 18 Sample Multiplier: 1

Instrument :  
 BNA\_M  
 ClientSampleId :  
 CB6N9

## Integration Parameters: LSCINT.P

Integrator: RTE  
 Smoothing : OFF  
 Sampling : 1  
 Start Thrs: 0.2  
 Stop Thrs : 0

Filtering: 5  
 Min Area: 0.1 % of largest Peak  
 Max Peaks: 100  
 Peak Location: TOP

If leading or trailing edge < 100 prefer < Baseline drop else tangent >  
 Peak separation: 5

Method : Z:\SVOASRV\HPCHEM1\BNA\_M\METHODS\SOM-EPA-BM020620MA.M  
 Title : SVOA CALIBRATION

35	16.933	2386	2388	2396	rVV	877642	1026084	10.14%	0.643%
36	17.209	2430	2435	2440	rBV	255902	380494	3.76%	0.238%
37	17.386	2460	2465	2470	rVB3	108728	172842	1.71%	0.108%
38	17.680	2509	2515	2519	rVV	579896	824221	8.15%	0.516%
39	17.727	2519	2523	2531	rVB	828064	1169845	11.56%	0.733%
40	17.804	2531	2536	2541	rBV	245120	343586	3.40%	0.215%
41	17.868	2541	2547	2551	rVV2	770164	1268903	12.54%	0.795%
42	17.909	2551	2554	2559	rVB	417581	533979	5.28%	0.334%
43	18.033	2571	2575	2580	rVV4	80848	170579	1.69%	0.107%
44	18.186	2596	2601	2605	rVV	436118	612286	6.05%	0.383%
45	18.221	2605	2607	2614	rVB3	129556	182600	1.81%	0.114%
46	18.439	2636	2644	2649	rBV2	184491	329188	3.25%	0.206%
47	18.492	2649	2653	2656	rVV	178788	247859	2.45%	0.155%
48	18.527	2656	2659	2664	rVB	137647	178639	1.77%	0.112%
49	18.615	2669	2674	2678	rVV	383642	631687	6.24%	0.396%
50	18.674	2678	2684	2687	rVV2	210288	447779	4.43%	0.280%
51	18.704	2687	2689	2693	rVV	154156	206985	2.05%	0.130%
52	18.751	2693	2697	2705	rVB3	268048	515159	5.09%	0.323%
53	18.874	2705	2718	2723	rBV	5598740	7667938	75.80%	4.802%
54	19.027	2740	2744	2748	rVV2	318905	423852	4.19%	0.265%
55	19.115	2756	2759	2765	rVB2	145756	223369	2.21%	0.140%
56	19.209	2769	2775	2777	rVV	5878995	8415465	83.19%	5.270%
57	19.239	2777	2780	2784	rVV	4748810	6012222	59.43%	3.765%
58	19.274	2784	2786	2789	rVV3	166948	207622	2.05%	0.130%
59	19.315	2789	2793	2800	rVB2	229246	426052	4.21%	0.267%
60	19.421	2807	2811	2819	rBV	269178	393967	3.89%	0.247%
61	19.580	2830	2838	2843	rBV5	386617	918336	9.08%	0.575%
62	19.709	2855	2860	2862	rVV3	298891	497743	4.92%	0.312%
63	19.745	2862	2866	2870	rVB	647713	934518	9.24%	0.585%
64	19.845	2880	2883	2887	rVV	392292	457912	4.53%	0.287%
65	19.898	2887	2892	2896	rVV2	584843	852907	8.43%	0.534%
66	19.939	2897	2899	2903	rVV2	136725	181540	1.79%	0.114%
67	20.039	2912	2916	2920	rVV	325893	380360	3.76%	0.238%
68	20.086	2920	2924	2929	rBV	321415	436651	4.32%	0.273%
69	20.321	2958	2964	2967	rBV6	238474	434232	4.29%	0.272%
70	20.492	2989	2993	3000	rVB	427581	677302	6.70%	0.424%
71	20.656	3015	3021	3025	rBV3	410815	746329	7.38%	0.467%

Data Path : Z:\SVOASRV\HPCHEM1\BNA M\DATA\BM021320\  
 Data File : BM024873.D  
 Acq On : 14 Feb 2020 02:45  
 Operator : CG/JU  
 Sample : L1404-15  
 Misc :  
 ALS Vial : 18 Sample Multiplier: 1

Instrument :  
 BNA\_M  
 ClientSampleId :  
 CB6N9

## Integration Parameters: LSCINT.P

Integrator: RTE  
 Smoothing : OFF  
 Sampling : 1  
 Start Thrs: 0.2  
 Stop Thrs : 0

Filtering: 5  
 Min Area: 0.1 % of largest Peak  
 Max Peaks: 100  
 Peak Location: TOP

If leading or trailing edge < 100 prefer < Baseline drop else tangent >  
 Peak separation: 5

Method : Z:\SVOASRV\HPCHEM1\BNA\_M\METHODS\SOM-EPA-BM020620MA.M  
 Title : SVOA CALIBRATION

72	20.698	3025	3028	3031	rVV	462773	561778	5.55%	0.352%
73	20.733	3031	3034	3037	rVV	344203	437172	4.32%	0.274%
74	20.774	3037	3041	3052	rVB5	895281	1906426	18.85%	1.194%
75	21.009	3074	3081	3085	rBV2	5591766	10116203	100.00%	6.335%
76	21.050	3085	3088	3096	rVB	2674019	3365585	33.27%	2.108%
77	21.162	3104	3107	3113	rBV	265289	309624	3.06%	0.194%
78	21.221	3114	3117	3122	rBV3	267919	335184	3.31%	0.210%
79	21.321	3130	3134	3140	rBV3	225832	411823	4.07%	0.258%
80	21.550	3168	3173	3177	rVV	572045	809530	8.00%	0.507%
81	21.597	3179	3181	3185	rVB	269890	295944	2.93%	0.185%
82	21.639	3185	3188	3195	rBV4	704959	1121977	11.09%	0.703%
83	21.733	3201	3204	3207	rBV	284890	356703	3.53%	0.223%
84	21.762	3207	3209	3214	rVB2	256263	319702	3.16%	0.200%
85	22.074	3259	3262	3267	rVB	370787	429142	4.24%	0.269%
86	22.280	3294	3297	3306	rVB3	480468	639174	6.32%	0.400%
87	22.503	3329	3335	3339	rBV	2265190	4803893	47.49%	3.008%
88	22.544	3339	3342	3345	rVV2	1821619	2668383	26.38%	1.671%
89	22.580	3345	3348	3356	rVV2	1036977	1545629	15.28%	0.968%
90	22.656	3357	3361	3366	rVB	437584	629711	6.22%	0.394%
91	22.939	3404	3409	3412	rBV	1103581	1791307	17.71%	1.122%
92	22.986	3412	3417	3421	rVV	3496264	5941027	58.73%	3.720%
93	23.027	3421	3424	3428	rVB	1545225	2093558	20.70%	1.311%
94	23.068	3428	3431	3433	rBV	293631	308344	3.05%	0.193%
95	23.115	3433	3439	3444	rVV	3108075	4999404	49.42%	3.131%
96	23.350	3476	3479	3485	rVB3	361577	558230	5.52%	0.350%
97	23.662	3527	3532	3538	rVB	1043568	1716070	16.96%	1.075%
98	23.733	3539	3544	3550	rVB	594678	1035859	10.24%	0.649%
99	25.156	3778	3786	3795	rVB3	1193394	3669020	36.27%	2.298%
100	25.774	3887	3891	3904	rVB2	533000	1373198	13.57%	0.860%

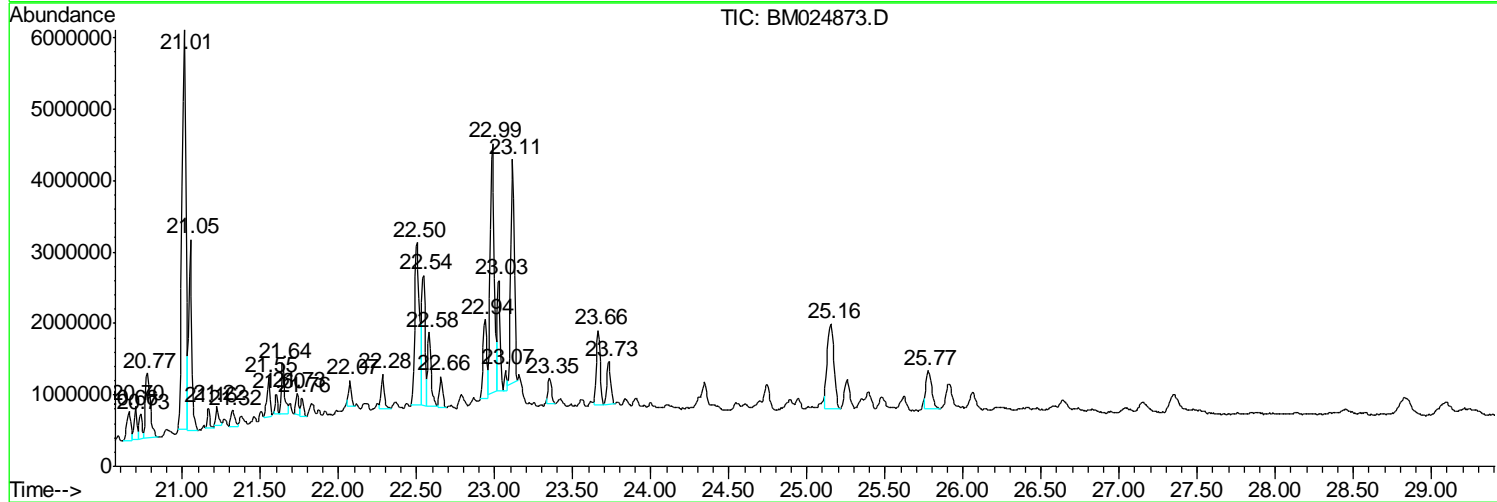
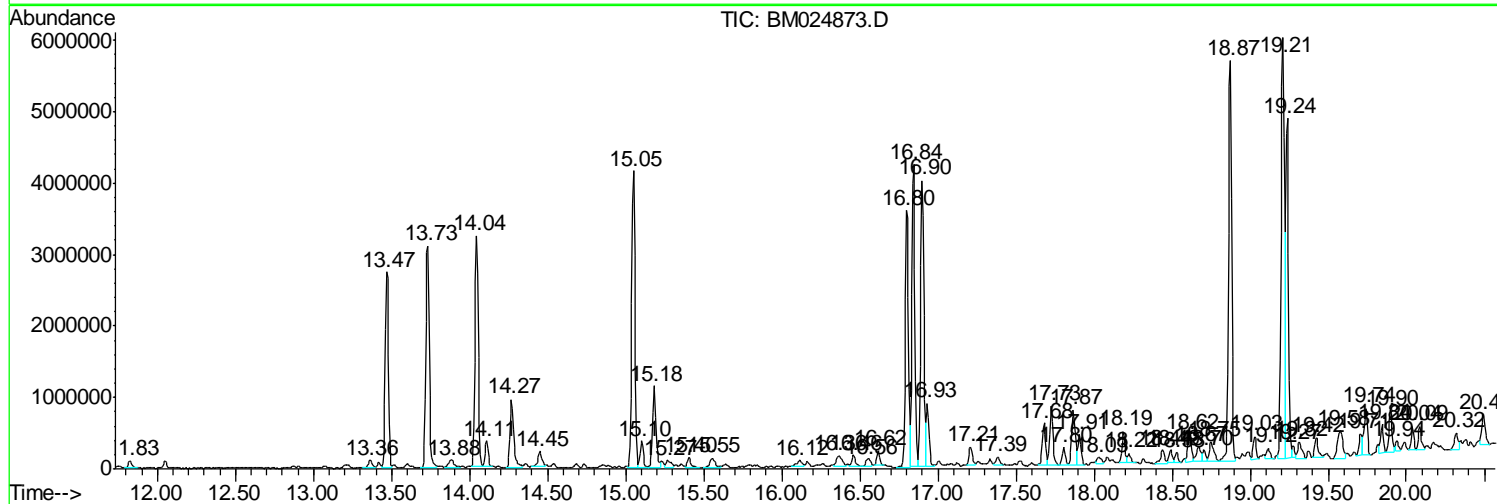
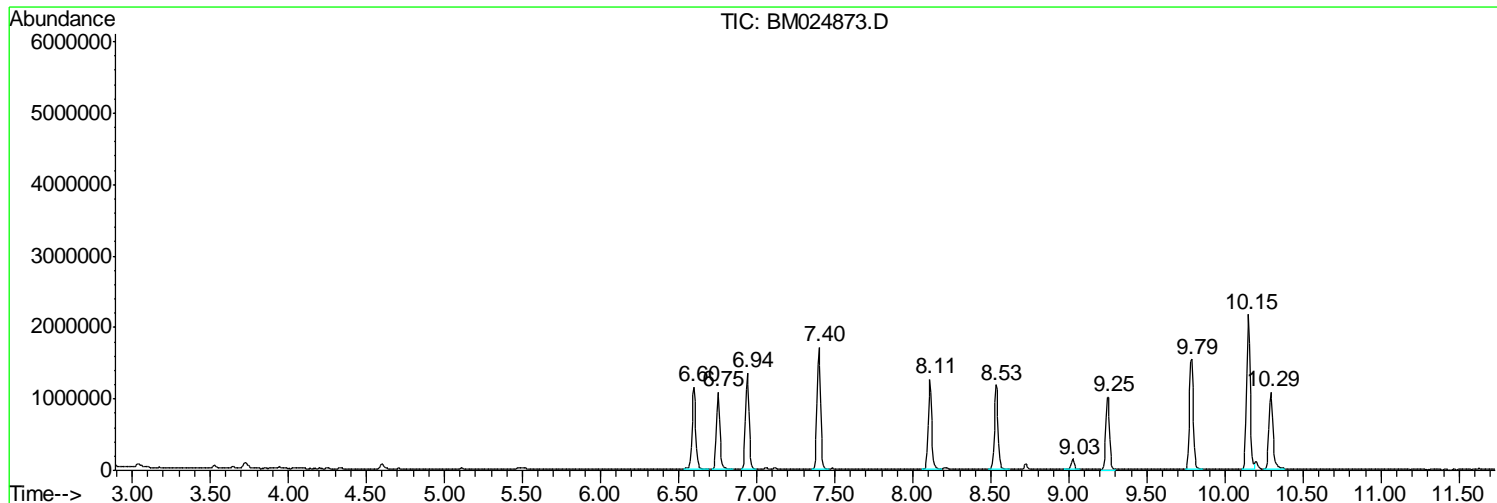
Sum of corrected areas: 159691815

Data Path : Z:\SVOASRV\HPCHEM1\BNA M\DATA\BM021320\  
 Data File : BM024873.D  
 Acq On : 14 Feb 2020 02:45  
 Operator : CG/JU  
 Sample : L1404-15  
 Misc :  
 ALS Vial : 18 Sample Multiplier: 1

**Instrument :**  
 BNA\_M  
**ClientSampled :**  
 CB6N9

Quant Method : Z:\SVOASRV\HPCHEM1\BNA\_M\METHODS\SOM-EPA-BM020620MA.M  
 Quant Title : SVOA CALIBRATION

TIC Library : C:\DATABASE\NIST11.L  
 TIC Integration Parameters: LSCINT.P



Data Path : Z:\SVOASRV\HPCHEM1\BNA M\DATA\BM021320\  
 Data File : BM024873.D  
 Acq On : 14 Feb 2020 02:45  
 Operator : CG/JU  
 Sample : L1404-15  
 Misc :  
 ALS Vial : 18 Sample Multiplier: 1

Instrument :  
 BNA\_M  
 ClientSampled :  
 CB6N9

Quant Method : Z:\SVOASRV\HPCHEM1\BNA\_M\METHODS\SOM-EPA-BM020620MA.M  
 Quant Title : SVOA CALIBRATION

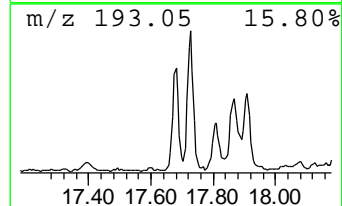
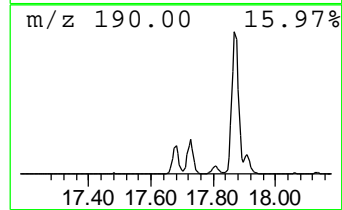
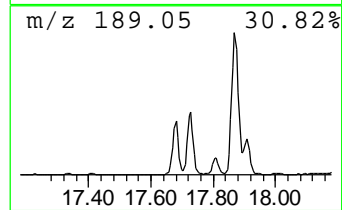
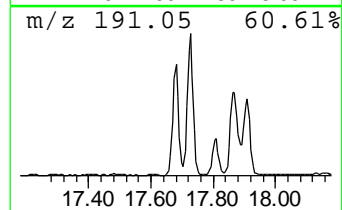
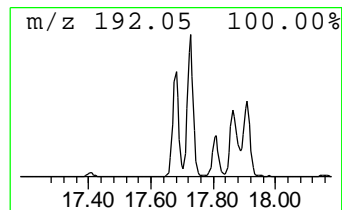
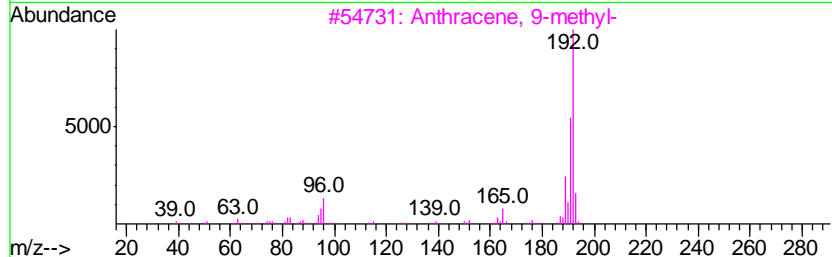
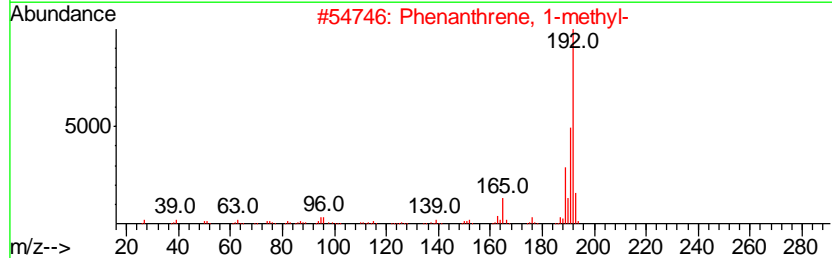
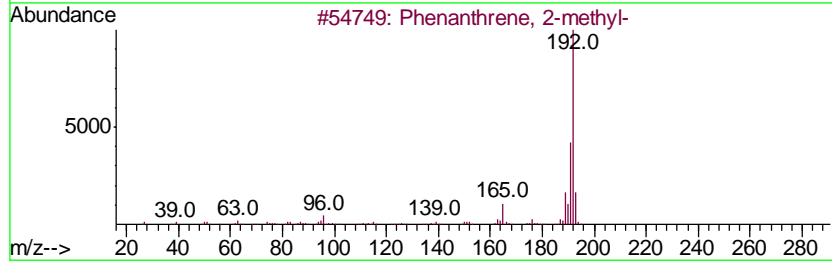
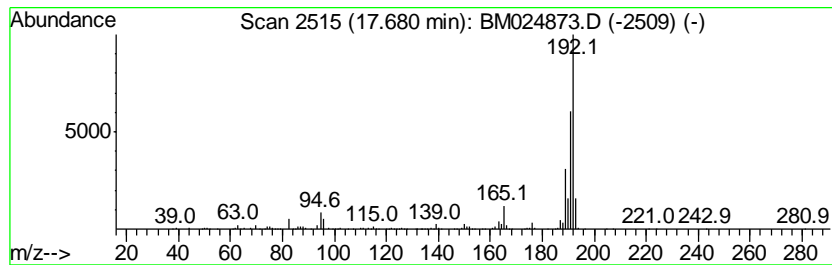
TIC Library : C:\DATABASE\NIST11.L  
 TIC Integration Parameters: LSCINT.P

\*\*\*\*\*  
 Peak Number 1 Phenanthrene, 2-methyl- Concentration Rank 6

R.T.	EstConc	Area	Relative to ISTD	R.T.
17.68	3.12 ng/ul	824221	Phenanthrene-d10	16.80

Hit#	of	Tentative ID	MW	MolForm	CAS#	Qual
1	5	Phenanthrene, 2-methyl-	192	C15H12	002531-84-2	93
2		Phenanthrene, 1-methyl-	192	C15H12	000832-69-9	93
3		Anthracene, 9-methyl-	192	C15H12	000779-02-2	93
4		1H-Indene, 2-phenyl-	192	C15H12	004505-48-0	91
5		Anthracene, 2-methyl-	192	C15H12	000613-12-7	91



Data Path : Z:\SVOASRV\HPCHEM1\BNA M\DATA\BM021320\  
 Data File : BM024873.D  
 Acq On : 14 Feb 2020 02:45  
 Operator : CG/JU  
 Sample : L1404-15  
 Misc :  
 ALS Vial : 18 Sample Multiplier: 1

Instrument :  
 BNA\_M  
 ClientSampled :  
 CB6N9

Quant Method : Z:\SVOASRV\HPCHEM1\BNA\_M\METHODS\SOM-EPA-BM020620MA.M  
 Quant Title : SVOA CALIBRATION

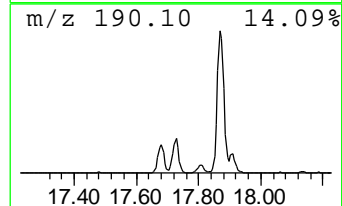
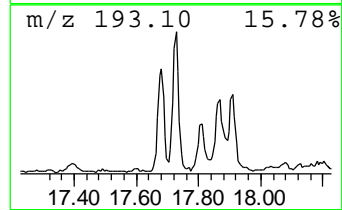
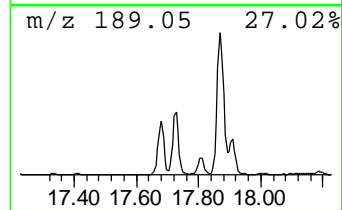
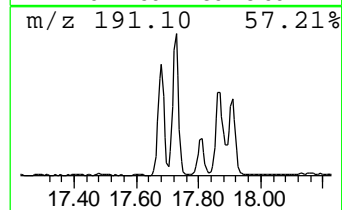
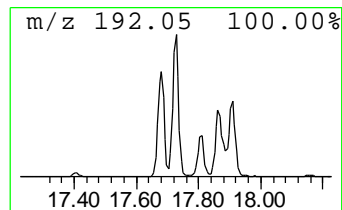
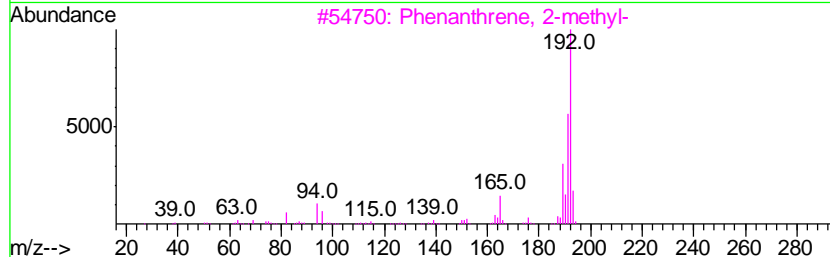
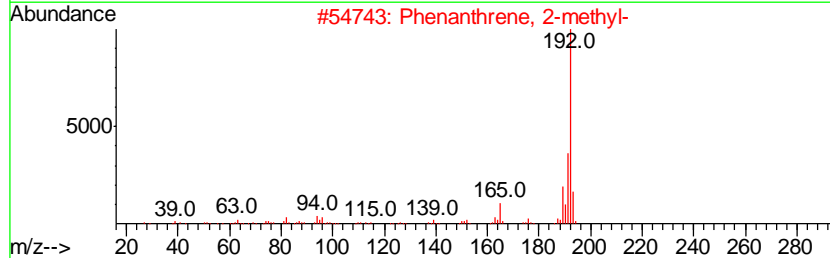
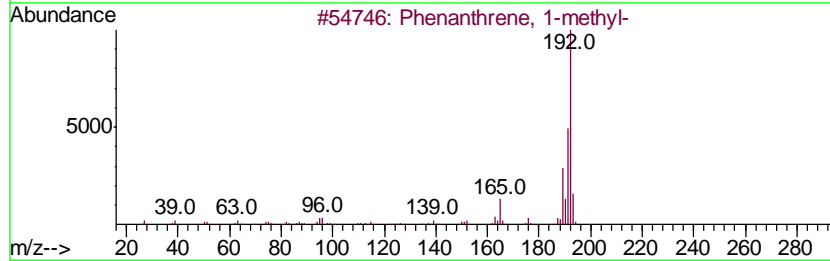
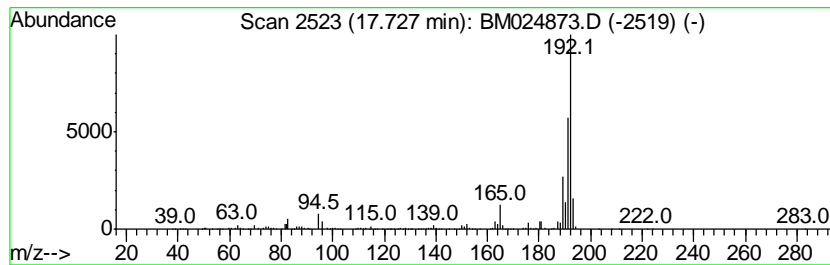
TIC Library : C:\DATABASE\NIST11.L  
 TIC Integration Parameters: LSCINT.P

\*\*\*\*\*  
 Peak Number 2 Phenanthrene, 1-methyl- Concentration Rank 3

R.T.	EstConc	Area	Relative to ISTD	R.T.
17.73	4.43 ng/ul	1169850	Phenanthrene-d10	16.80

Hit#	of	Tentative ID	MW	MolForm	CAS#	Qual
1	5	Phenanthrene, 1-methyl-	192	C15H12	000832-69-9	97
2		Phenanthrene, 2-methyl-	192	C15H12	002531-84-2	96
3		Phenanthrene, 2-methyl-	192	C15H12	002531-84-2	96
4		Anthracene, 9-methyl-	192	C15H12	000779-02-2	95
5		1H-Indene, 2-phenyl-	192	C15H12	004505-48-0	95



Data Path : Z:\SVOASRV\HPCHEM1\BNA M\DATA\BM021320\  
 Data File : BM024873.D  
 Acq On : 14 Feb 2020 02:45  
 Operator : CG/JU  
 Sample : L1404-15  
 Misc :  
 ALS Vial : 18 Sample Multiplier: 1

Instrument :  
 BNA\_M  
 ClientSampled :  
 CB6N9

Quant Method : Z:\SVOASRV\HPCHEM1\BNA\_M\METHODS\SOM-EPA-BM020620MA.M  
 Quant Title : SVOA CALIBRATION

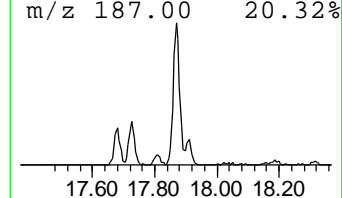
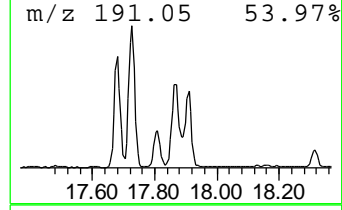
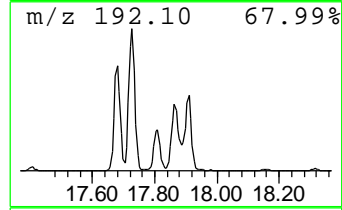
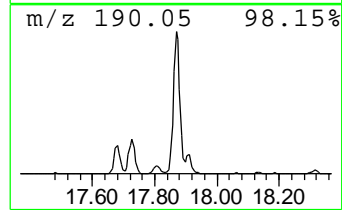
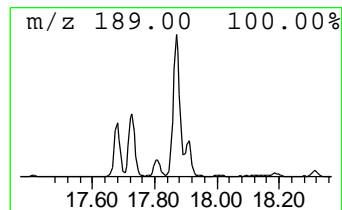
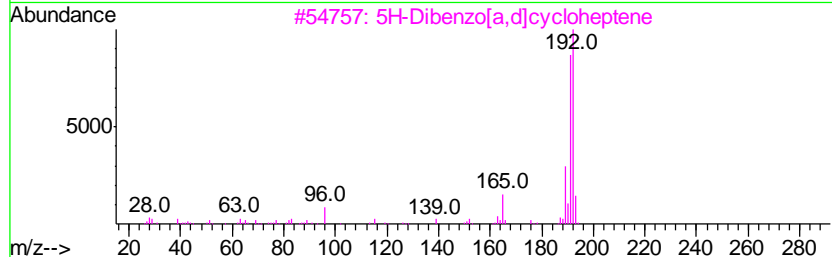
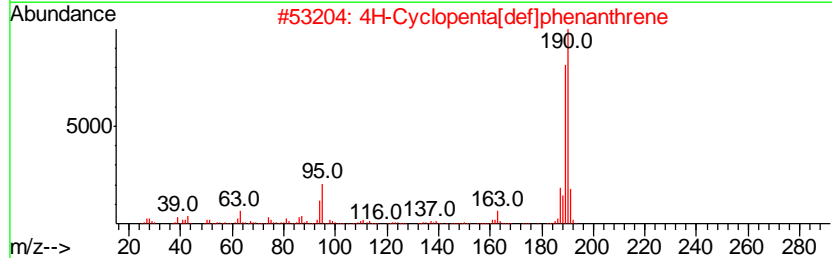
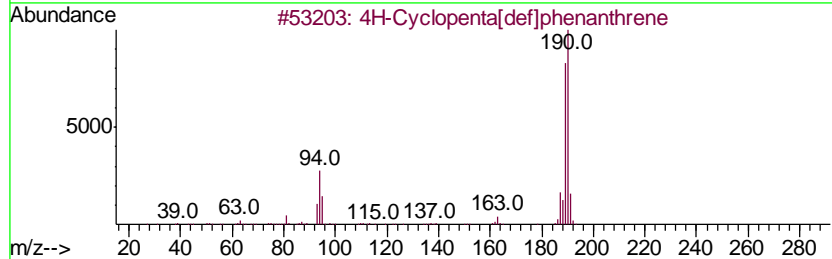
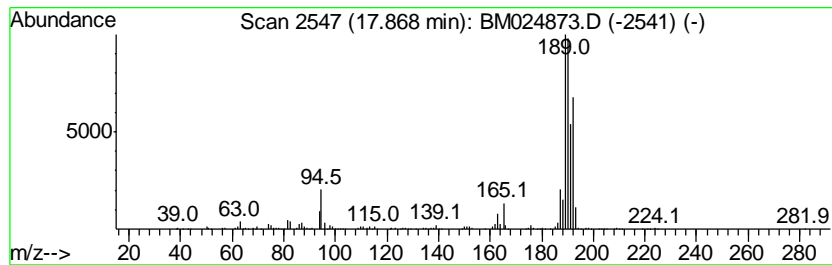
TIC Library : C:\DATABASE\NIST11.L  
 TIC Integration Parameters: LSCINT.P

\*\*\*\*\*  
 Peak Number 3 4H-Cyclopenta[def]phenanthrene Concentration Rank 2

R.T.	EstConc	Area	Relative to ISTD	R.T.
17.87	4.80 ng/ul	1268900	Phenanthrene-d10	16.80

Hit#	of	Tentative ID	MW	MolForm	CAS#	Qual
1	5	4H-Cyclopenta[def]phenanthrene	190	C15H10	000203-64-5	92
2		4H-Cyclopenta[def]phenanthrene	190	C15H10	000203-64-5	53
3		5H-Dibenzo[a,d]cycloheptene	192	C15H12	000256-81-5	38
4		1H-Indene, 2-phenyl-	192	C15H12	004505-48-0	38
5		Phenanthrene, 4-methyl-	192	C15H12	000832-64-4	30



Data Path : Z:\SVOASRV\HPCHEM1\BNA M\DATA\BM021320\  
 Data File : BM024873.D  
 Acq On : 14 Feb 2020 02:45  
 Operator : CG/JU  
 Sample : L1404-15  
 Misc :  
 ALS Vial : 18 Sample Multiplier: 1

Instrument :  
 BNA\_M  
 ClientSampled :  
 CB6N9

Quant Method : Z:\SVOASRV\HPCHEM1\BNA\_M\METHODS\SOM-EPA-BM020620MA.M  
 Quant Title : SVOA CALIBRATION

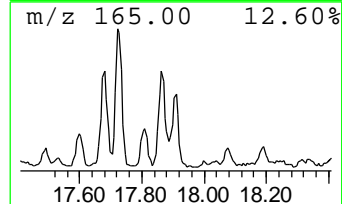
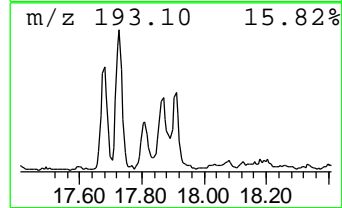
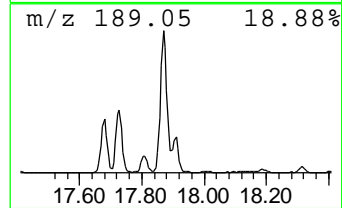
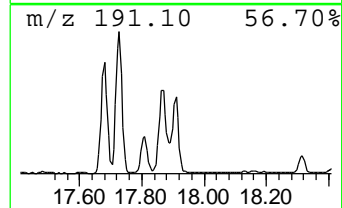
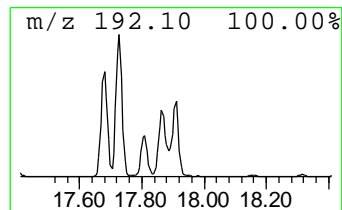
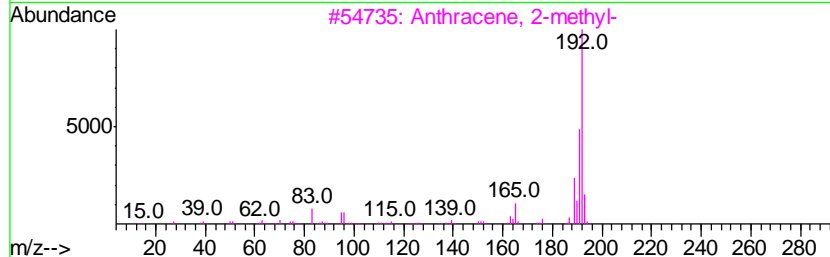
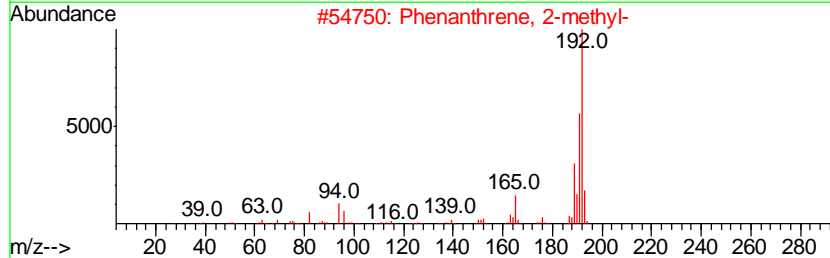
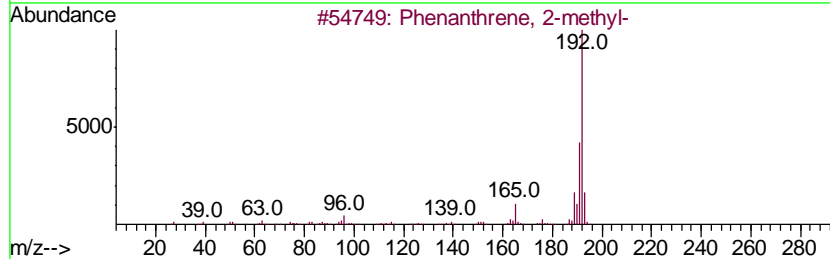
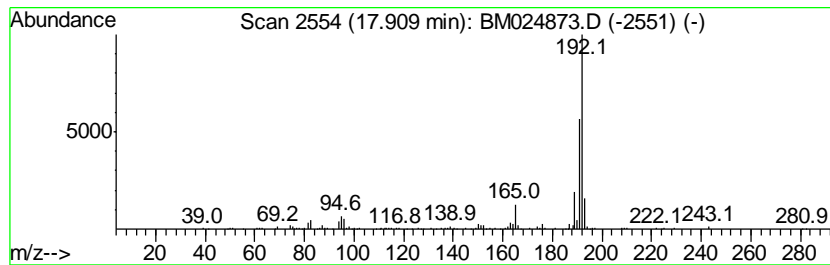
TIC Library : C:\DATABASE\NIST11.L  
 TIC Integration Parameters: LSCINT.P

\*\*\*\*\*  
 Peak Number 4 Anthracene, 2-methyl- Concentration Rank 13

R.T.	EstConc	Area	Relative to ISTD	R.T.
17.91	2.02 ng/ul	533979	Phenanthrene-d10	16.80

Hit#	of	Tentative ID	MW	MolForm	CAS#	Qual
1	5	Phenanthrene, 2-methyl-	192	C15H12	002531-84-2	93
2		Phenanthrene, 2-methyl-	192	C15H12	002531-84-2	93
3		Anthracene, 2-methyl-	192	C15H12	000613-12-7	91
4		Anthracene, 2-methyl-	192	C15H12	000613-12-7	91
5		Phenanthrene, 1-methyl-	192	C15H12	000832-69-9	89





Data Path : Z:\SVOASRV\HPCHEM1\BNA M\DATA\BM021320\  
 Data File : BM024873.D  
 Acq On : 14 Feb 2020 02:45  
 Operator : CG/JU  
 Sample : L1404-15  
 Misc :  
 ALS Vial : 18 Sample Multiplier: 1

Instrument :  
 BNA\_M  
 ClientSampled :  
 CB6N9

Quant Method : Z:\SVOASRV\HPCHEM1\BNA\_M\METHODS\SOM-EPA-BM020620MA.M  
 Quant Title : SVOA CALIBRATION

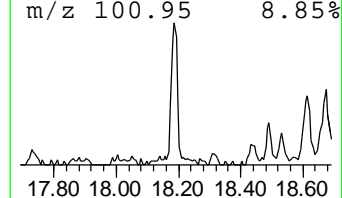
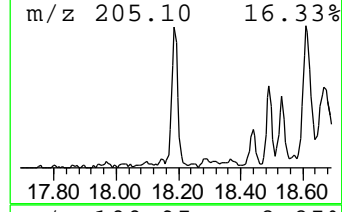
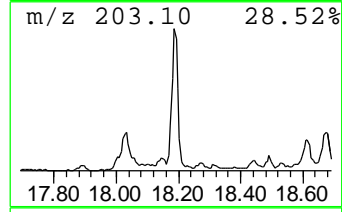
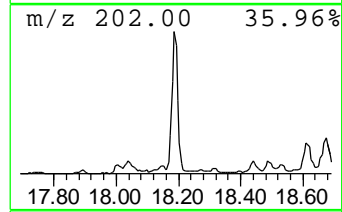
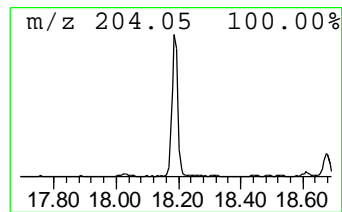
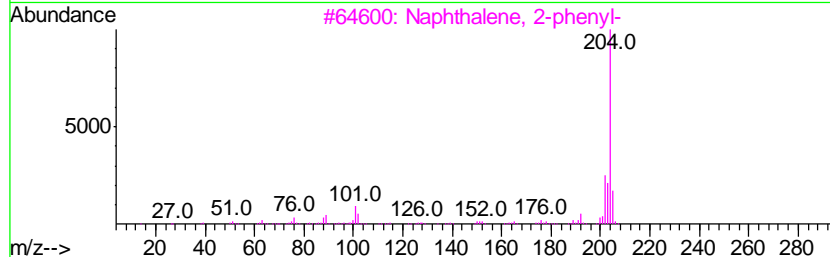
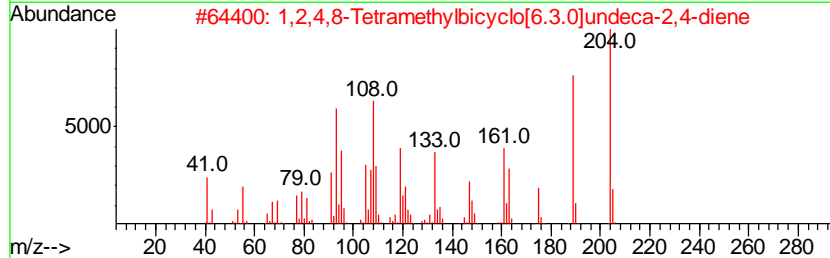
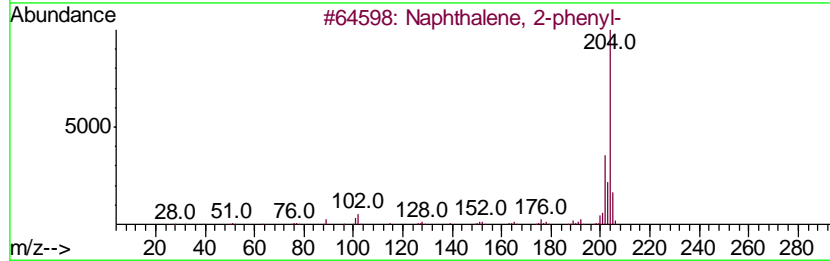
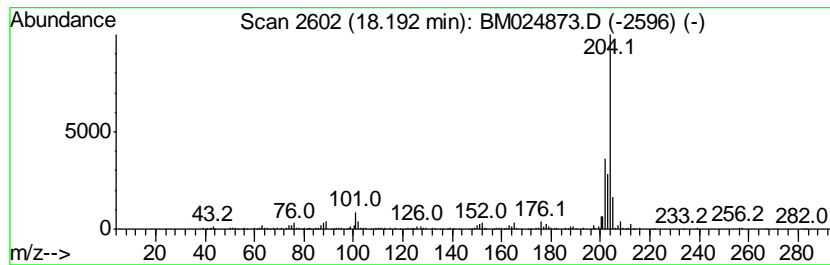
TIC Library : C:\DATABASE\NIST11.L  
 TIC Integration Parameters: LSCINT.P

\*\*\*\*\*  
 Peak Number 5 Naphthalene, 2-phenyl- Concentration Rank 10

R.T.	EstConc	Area	Relative to ISTD	R.T.
18.19	2.32 ng/ul	612286	Phenanthrene-d10	16.80

Hit#	of	Tentative ID	MW	MolForm	CAS#	Qual
1	5	Naphthalene, 2-phenyl-	204	C16H12	000612-94-2	93
2		1,2,4,8-Tetramethylbicyclo[6.3.0...]	204	C15H24	137235-51-9	90
3		Naphthalene, 2-phenyl-	204	C16H12	000612-94-2	90
4		5,16[1',2']:8,13[1'',2'']-Dibenz...	408	C32H24	005672-97-9	87
5		Naphthalene, 2-phenyl-	204	C16H12	000612-94-2	76



Data Path : Z:\SVOASRV\HPCHEM1\BNA M\DATA\BM021320\  
 Data File : BM024873.D  
 Acq On : 14 Feb 2020 02:45  
 Operator : CG/JU  
 Sample : L1404-15  
 Misc :  
 ALS Vial : 18 Sample Multiplier: 1

Instrument :  
 BNA\_M  
 ClientSampleID :  
 CB6N9

Quant Method : Z:\SVOASRV\HPCHEM1\BNA\_M\METHODS\SOM-EPA-BM020620MA.M  
 Quant Title : SVOA CALIBRATION

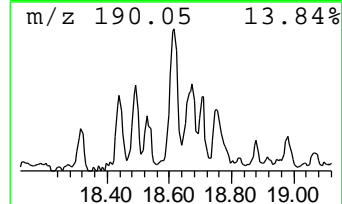
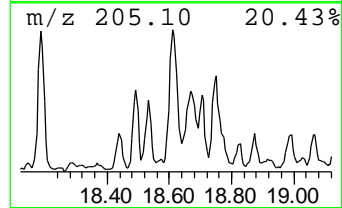
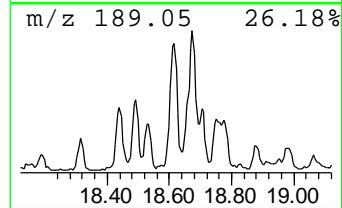
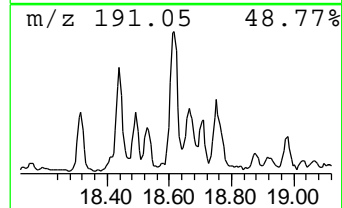
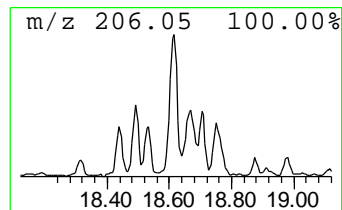
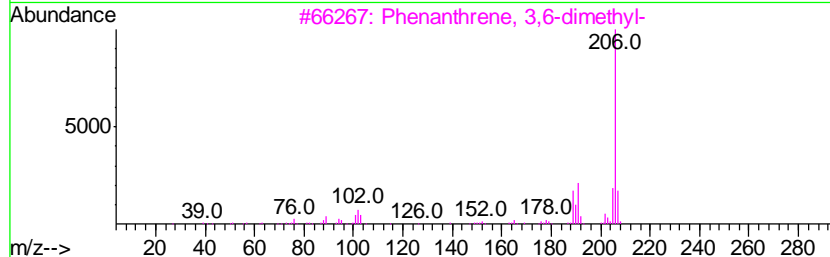
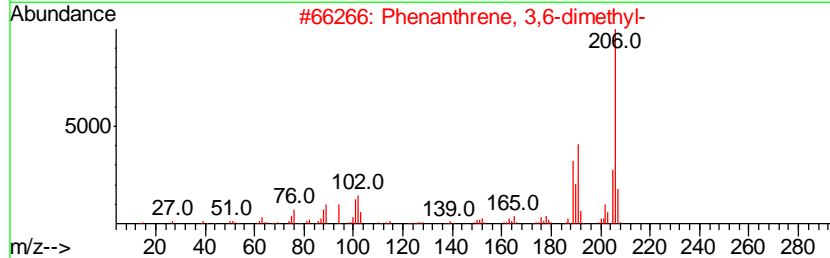
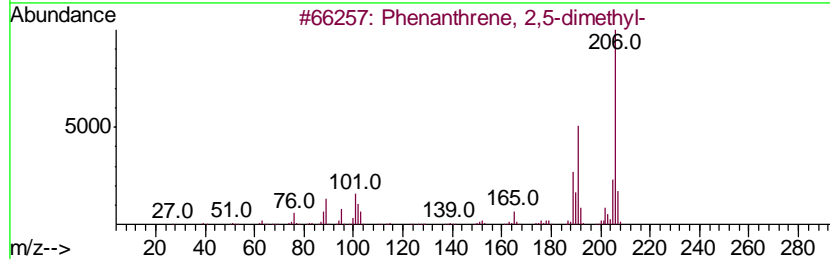
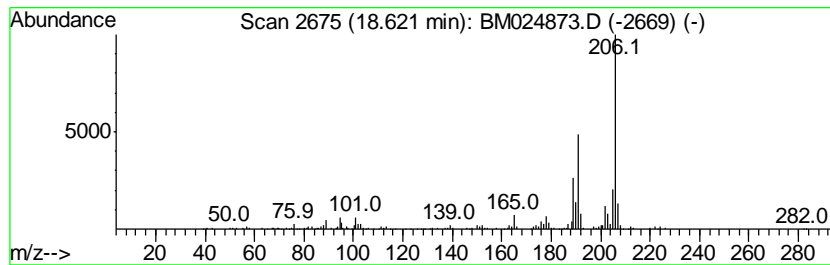
TIC Library : C:\DATABASE\NIST11.L  
 TIC Integration Parameters: LSCINT.P

\*\*\*\*\*  
 Peak Number 6 Phenanthrene, 2,5-dimethyl- Concentration Rank 9

R.T.	EstConc	Area	Relative to ISTD	R.T.
18.62	2.39 ng/ul	631687	Phenanthrene-d10	16.80

Hit#	of	Tentative ID	MW	MolForm	CAS#	Qual
1	5	Phenanthrene, 2,5-dimethyl-	206	C16H14	003674-66-6	93
2		Phenanthrene, 3,6-dimethyl-	206	C16H14	001576-67-6	91
3		Phenanthrene, 3,6-dimethyl-	206	C16H14	001576-67-6	87
4		Phenanthrene, 2,3-dimethyl-	206	C16H14	003674-65-5	87
5		9,10-Dimethylanthracene	206	C16H14	000781-43-1	83



Data Path : Z:\SVOASRV\HPCHEM1\BNA M\DATA\BM021320\  
 Data File : BM024873.D  
 Acq On : 14 Feb 2020 02:45  
 Operator : CG/JU  
 Sample : L1404-15  
 Misc :  
 ALS Vial : 18 Sample Multiplier: 1

Instrument :  
 BNA\_M  
 ClientSampleID :  
 CB6N9

Quant Method : Z:\SVOASRV\HPCHEM1\BNA\_M\METHODS\SOM-EPA-BM020620MA.M  
 Quant Title : SVOA CALIBRATION

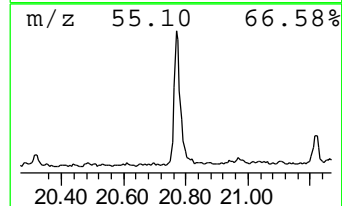
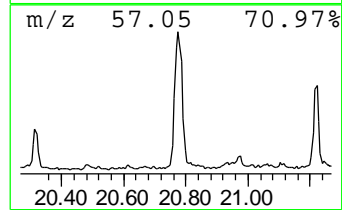
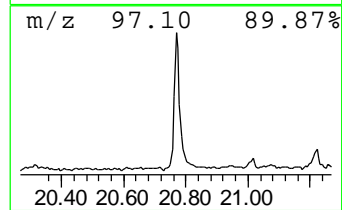
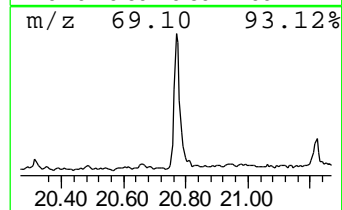
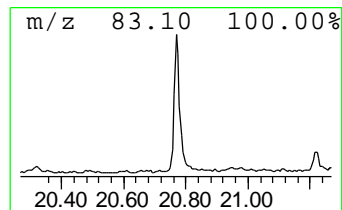
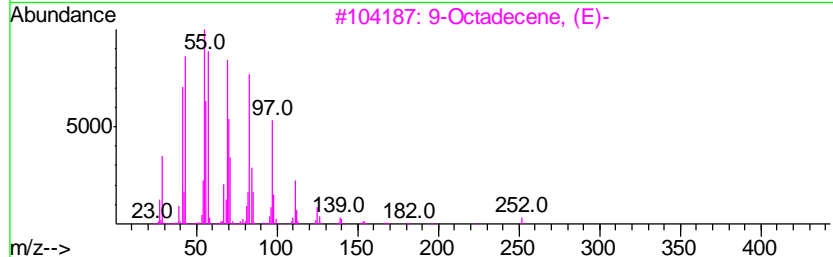
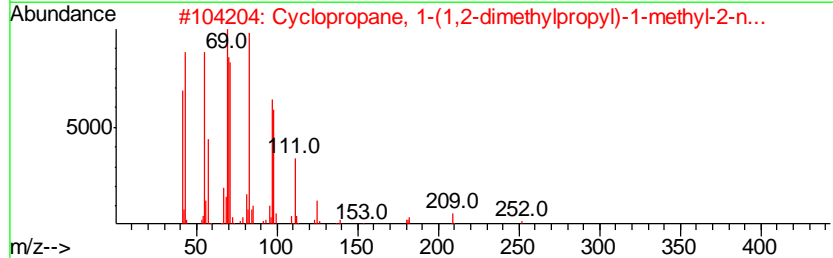
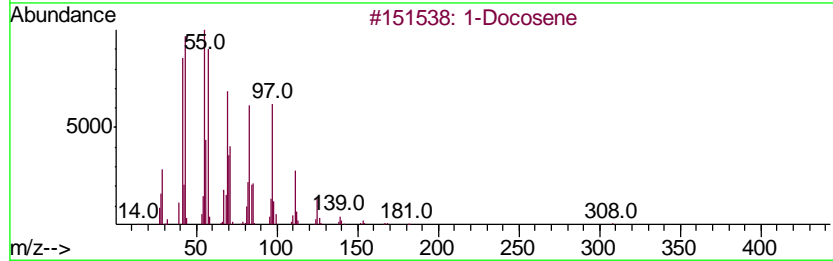
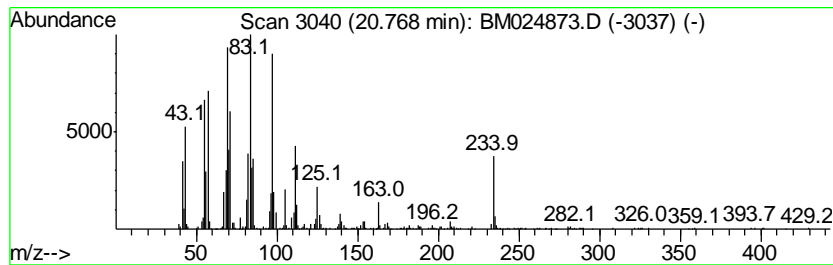
TIC Library : C:\DATABASE\NIST11.L  
 TIC Integration Parameters: LSCINT.P

\*\*\*\*\*  
 Peak Number 7 (DEL) Alkane: Straight-Chai... Concentration Rank 5

R.T.	EstConc	Area	Relative to ISTD	R.T.
20.77	3.77 ng/ul	1906430	Chrysene-d12	21.02

Hit#	of	Tentative ID	MW	MolForm	CAS#	Qual
1	5	1-Docosene	308	C22H44	001599-67-3	90
2		Cyclopropane, 1-(1,2-dimethylpro...	252	C18H36	041977-42-8	89
3		9-Octadecene, (E)-	252	C18H36	007206-25-9	83
4		17-Pentatriacontene	491	C35H70	006971-40-0	81
5		Trichloroacetic acid, hexadecyl ...	386	C18H33Cl3O2	074339-54-1	74



Data Path : Z:\SVOASRV\HPCHEM1\BNA M\DATA\BM021320\  
 Data File : BM024873.D  
 Acq On : 14 Feb 2020 02:45  
 Operator : CG/JU  
 Sample : L1404-15  
 Misc :  
 ALS Vial : 18 Sample Multiplier: 1

Instrument :  
 BNA\_M  
 ClientSampleId :  
 CB6N9

Quant Method : Z:\SVOASRV\HPCHEM1\BNA\_M\METHODS\SOM-EPA-BM020620MA.M  
 Quant Title : SVOA CALIBRATION

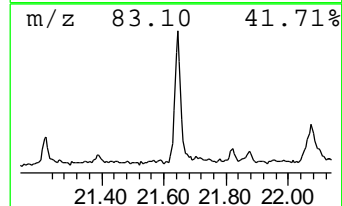
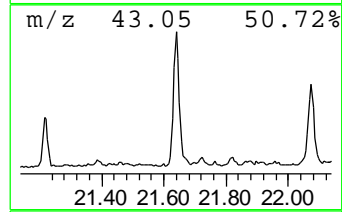
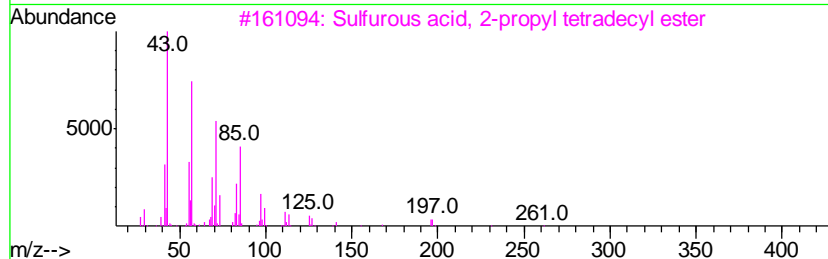
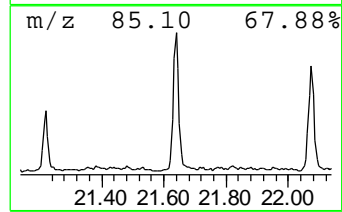
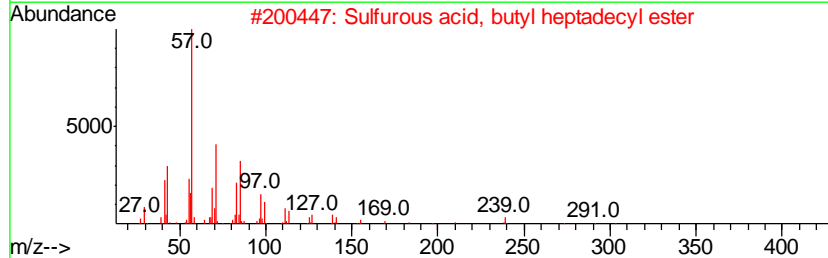
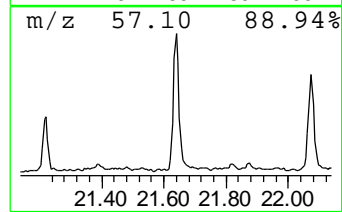
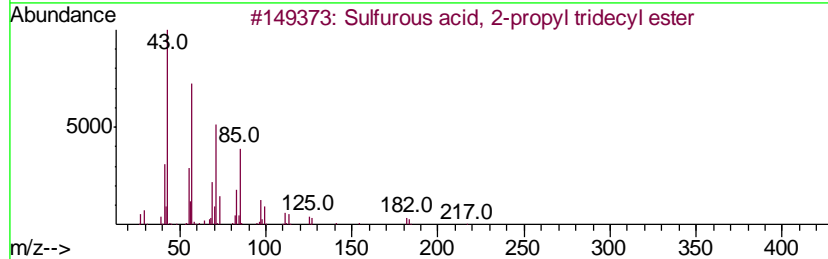
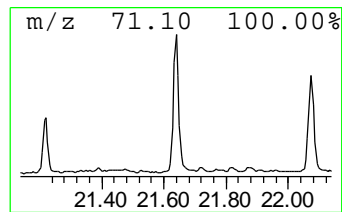
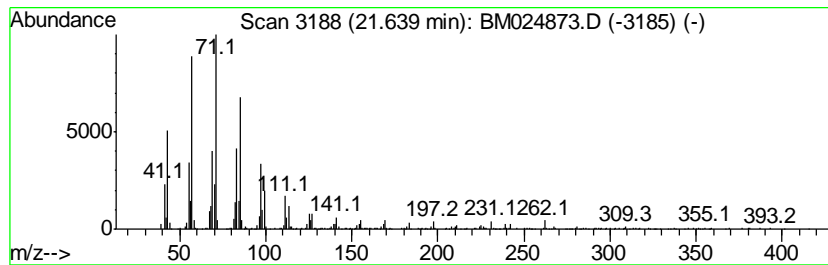
TIC Library : C:\DATABASE\NIST11.L  
 TIC Integration Parameters: LSCINT.P

\*\*\*\*\*  
 Peak Number 8 Sulfurous acid, 2-propyl tr... Concentration Rank 12

R.T.	EstConc	Area	Relative to ISTD	R.T.
21.64	2.22 ng/ul	1121980	Chrysene-d12	21.02

Hit#	of	Tentative ID	MW	MolForm	CAS#	Qual
1	5	Sulfurous acid, 2-propyl tridecy...	306	C16H34O3S	1000309-12-4	91
2		Sulfurous acid, butyl heptadecyl...	376	C21H44O3S	1000309-18-4	91
3		Sulfurous acid, 2-propyl tetradec...	320	C17H36O3S	1000309-12-5	91
4		1-Heptadecene	238	C17H34	006765-39-5	84
5		Heptacosane	380	C27H56	000593-49-7	70



Data Path : Z:\SVOASRV\HPCHEM1\BNA M\DATA\BM021320\  
 Data File : BM024873.D  
 Acq On : 14 Feb 2020 02:45  
 Operator : CG/JU  
 Sample : L1404-15  
 Misc :  
 ALS Vial : 18 Sample Multiplier: 1

Instrument :  
 BNA\_M  
 ClientSampleID :  
 CB6N9

Quant Method : Z:\SVOASRV\HPCHEM1\BNA\_M\METHODS\SOM-EPA-BM020620MA.M  
 Quant Title : SVOA CALIBRATION

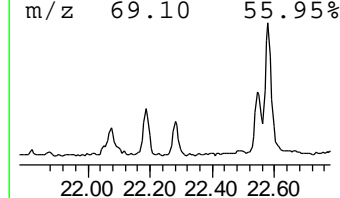
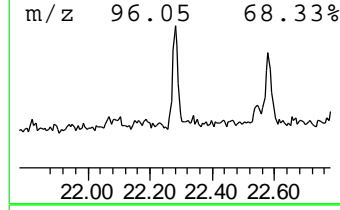
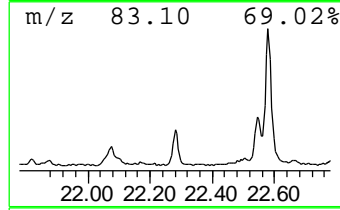
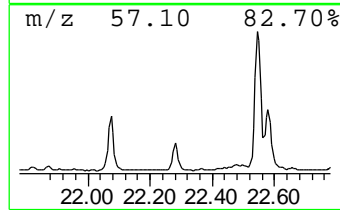
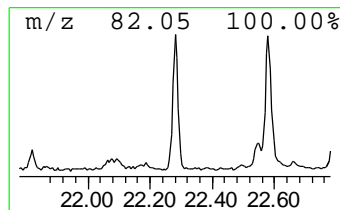
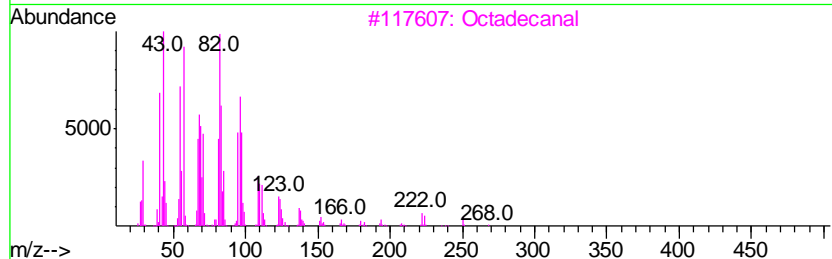
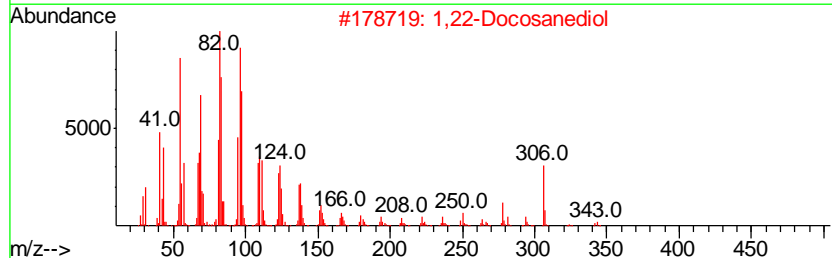
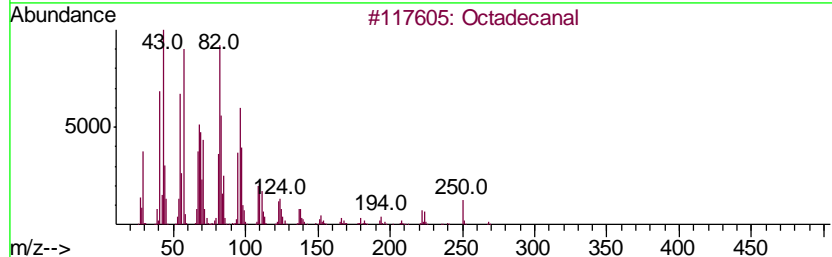
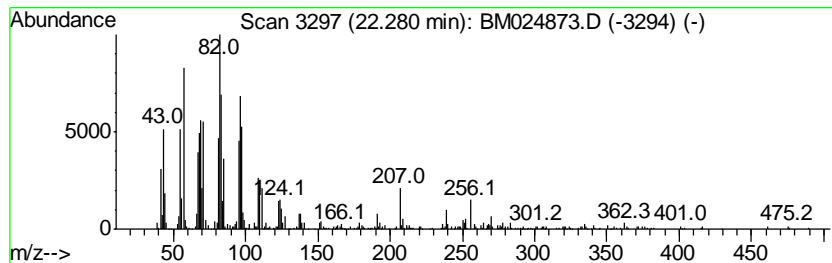
TIC Library : C:\DATABASE\NIST11.L  
 TIC Integration Parameters: LSCINT.P

\*\*\*\*\*  
 Peak Number 9 Octadecanal Concentration Rank 7

R.T.	EstConc	Area	Relative to ISTD	R.T.
22.28	2.56 ng/ul	639174	Perylene-d12	23.11

Hit#	of	Tentative ID	MW	MolForm	CAS#	Qual
1	5	Octadecanal	268	C18H36O	000638-66-4	94
2		1,22-Docosanediol	342	C22H46O2	022513-81-1	93
3		Octadecanal	268	C18H36O	000638-66-4	91
4		Oxirane, hexadecyl-	268	C18H36O	007390-81-0	91
5		Oxirane, heptadecyl-	282	C19H38O	067860-04-2	91



Data Path : Z:\SVOASRV\HPCHEM1\BNA M\DATA\BM021320\  
 Data File : BM024873.D  
 Acq On : 14 Feb 2020 02:45  
 Operator : CG/JU  
 Sample : L1404-15  
 Misc :  
 ALS Vial : 18 Sample Multiplier: 1

Instrument :  
 BNA\_M  
 ClientSampled :  
 CB6N9

Quant Method : Z:\SVOASRV\HPCHEM1\BNA\_M\METHODS\SOM-EPA-BM020620MA.M  
 Quant Title : SVOA CALIBRATION

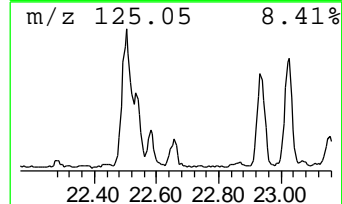
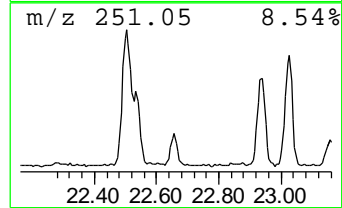
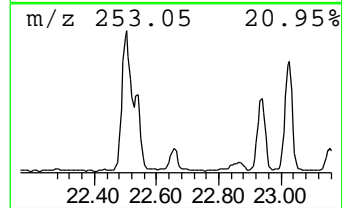
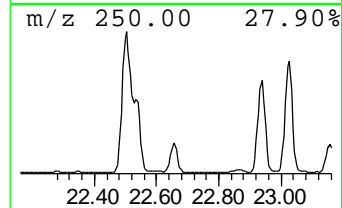
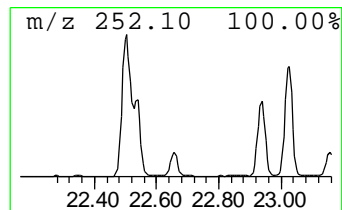
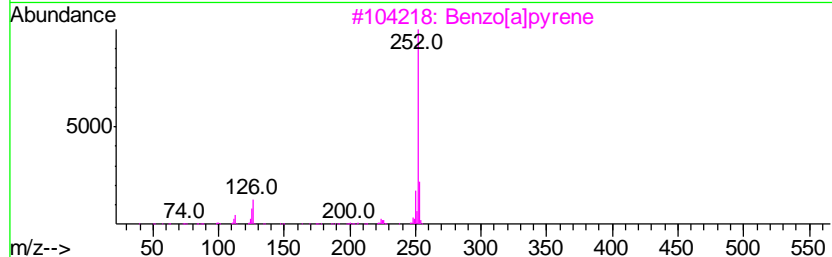
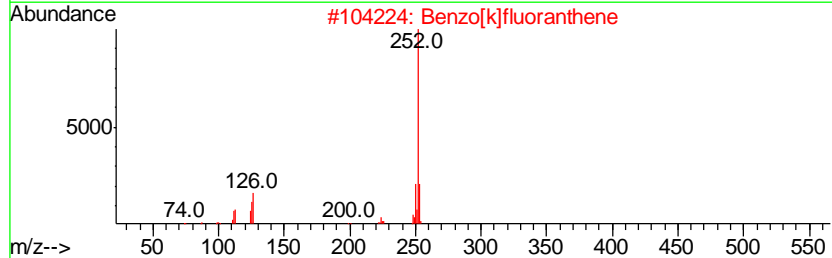
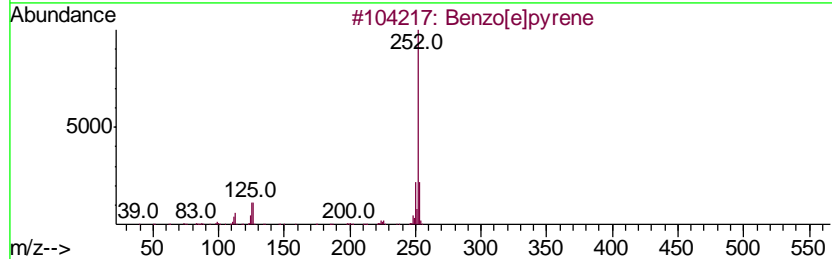
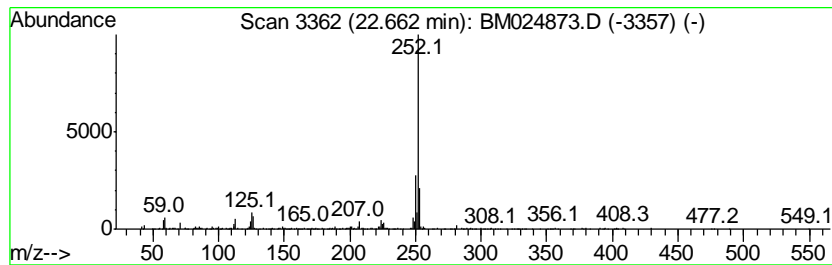
TIC Library : C:\DATABASE\NIST11.L  
 TIC Integration Parameters: LSCINT.P

\*\*\*\*\*  
 Peak Number 10 Benzo[e]pyrene Concentration Rank 8

R.T.	EstConc	Area	Relative to ISTD	R.T.
22.66	2.52 ng/ul	629711	Perylene-d12	23.11

Hit#	of	Tentative ID	MW	MolForm	CAS#	Qual
1	5	Benzo[e]pyrene	252	C20H12	000192-97-2	96
2		Benzo[k]fluoranthene	252	C20H12	000207-08-9	93
3		Benzo[a]pyrene	252	C20H12	000050-32-8	91
4		Benz[e]acephenanthrylene	252	C20H12	000205-99-2	81
5		Benz[e]acephenanthrylene	252	C20H12	000205-99-2	76



Data Path : Z:\SVOASRV\HPCHEM1\BNA M\DATA\BM021320\  
 Data File : BM024873.D  
 Acq On : 14 Feb 2020 02:45  
 Operator : CG/JU  
 Sample : L1404-15  
 Misc :  
 ALS Vial : 18 Sample Multiplier: 1

Instrument :  
 BNA\_M  
 ClientSampled :  
 CB6N9

Quant Method : Z:\SVOASRV\HPCHEM1\BNA\_M\METHODS\SOM-EPA-BM020620MA.M  
 Quant Title : SVOA CALIBRATION

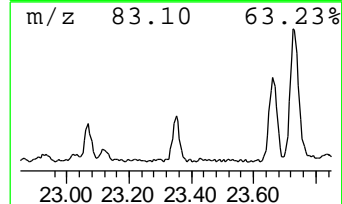
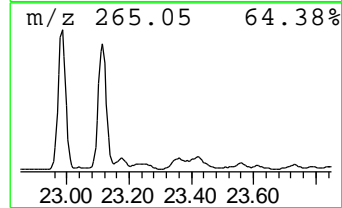
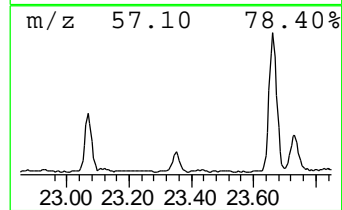
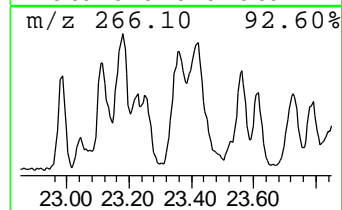
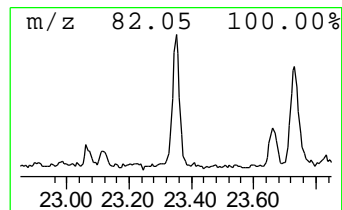
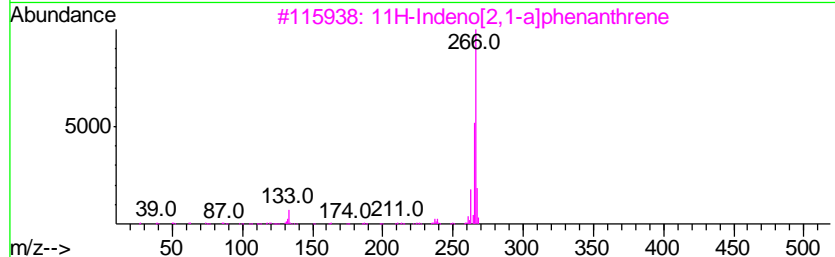
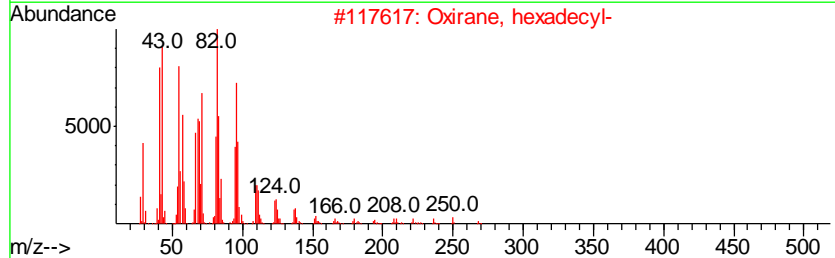
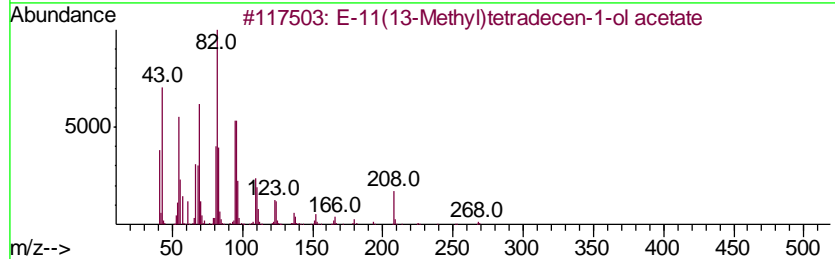
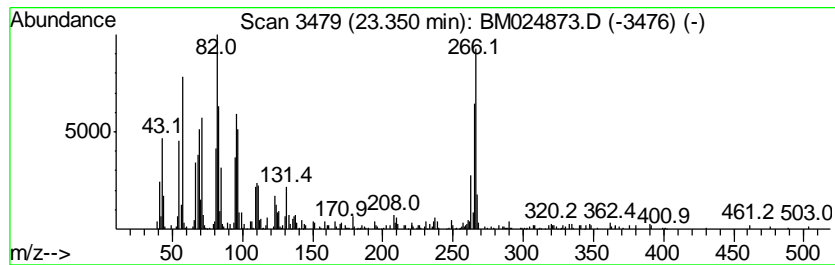
TIC Library : C:\DATABASE\NIST11.L  
 TIC Integration Parameters: LSCINT.P

\*\*\*\*\*  
 Peak Number 11 unknown-01 Concentration Rank 11

R.T.	EstConc	Area	Relative to ISTD	R.T.
23.35	2.23 ng/ul	558230	Perylene-d12	23.11

Hit#	of	Tentative ID	MW	MolForm	CAS#	Qual
1	5	E-11(13-Methyl)tetradecen-1-ol a...	268	C17H32O2	1000130-80-4	38
2		Oxirane, hexadecyl-	268	C18H36O	007390-81-0	38
3		11H-Indeno[2,1-a]phenanthrene	266	C21H14	000220-97-3	35
4		Hexadecanal	240	C16H32O	000629-80-1	35
5		8H-Indeno[2,1-b]phenanthrene	266	C21H14	000241-28-1	30



Data Path : Z:\SVOASRV\HPCHEM1\BNA M\DATA\BM021320\  
 Data File : BM024873.D  
 Acq On : 14 Feb 2020 02:45  
 Operator : CG/JU  
 Sample : L1404-15  
 Misc :  
 ALS Vial : 18 Sample Multiplier: 1

Instrument :  
 BNA\_M  
 ClientSampled :  
 CB6N9

Quant Method : Z:\SVOASRV\HPCHEM1\BNA\_M\METHODS\SOM-EPA-BM020620MA.M  
 Quant Title : SVOA CALIBRATION

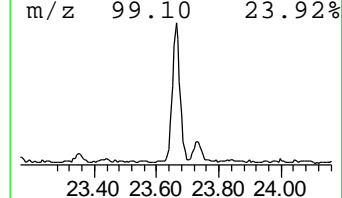
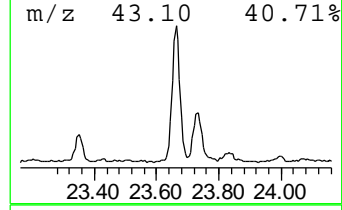
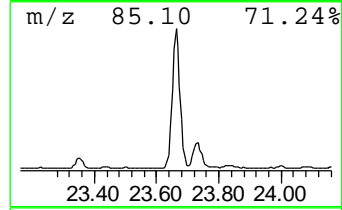
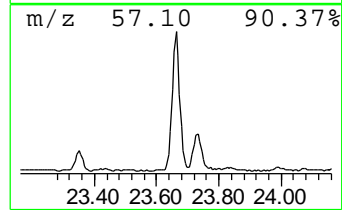
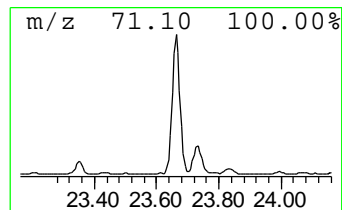
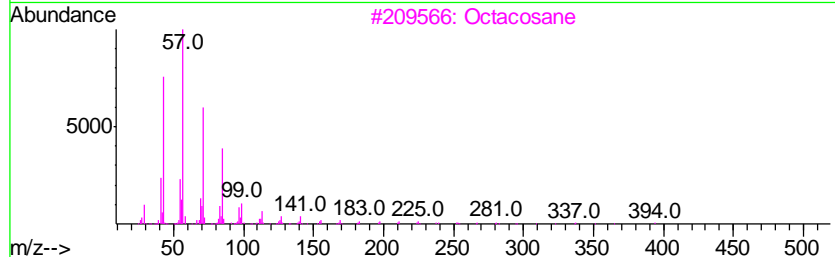
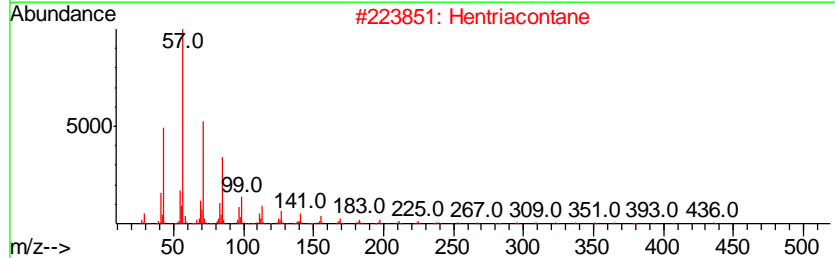
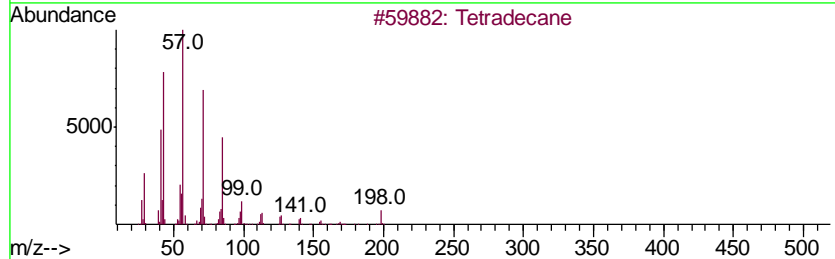
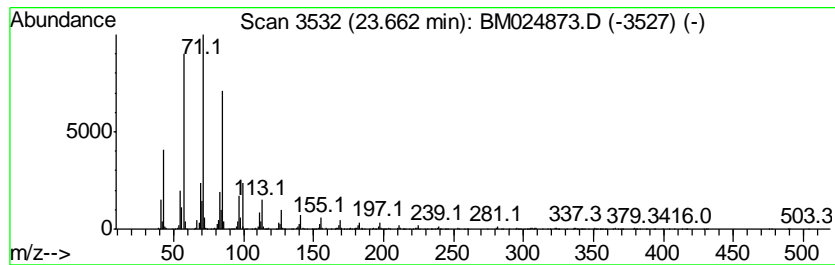
TIC Library : C:\DATABASE\NIST11.L  
 TIC Integration Parameters: LSCINT.P

\*\*\*\*\*  
 Peak Number 12 (DEL) Alkane: Straight-Chai... Concentration Rank 1

R.T.	EstConc	Area	Relative to ISTD	R.T.
23.66	6.87 ng/ul	1716070	Perylene-d12	23.11

Hit#	of	Tentative ID	MW	MolForm	CAS#	Qual
1	5	Tetradecane	198	C14H30	000629-59-4	91
2		Hentriacontane	437	C31H64	000630-04-6	90
3		Octacosane	394	C28H58	000630-02-4	90
4		Hexacosane	366	C26H54	000630-01-3	90
5		Tridecane, 7-hexyl-	268	C19H40	007225-66-3	87





Data Path : Z:\SVOASRV\HPCHEM1\BNA M\DATA\BM021320\  
 Data File : BM024873.D  
 Acq On : 14 Feb 2020 02:45  
 Operator : CG/JU  
 Sample : L1404-15  
 Misc :  
 ALS Vial : 18 Sample Multiplier: 1

Instrument :  
 BNA\_M  
 ClientSampleID :  
 CB6N9

Quant Method : Z:\SVOASRV\HPCHEM1\BNA\_M\METHODS\SOM-EPA-BM020620MA.M  
 Quant Title : SVOA CALIBRATION

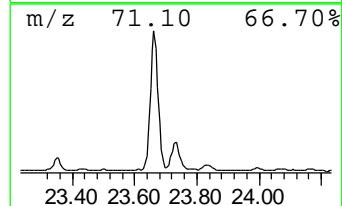
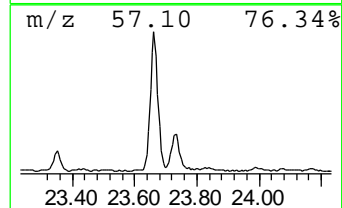
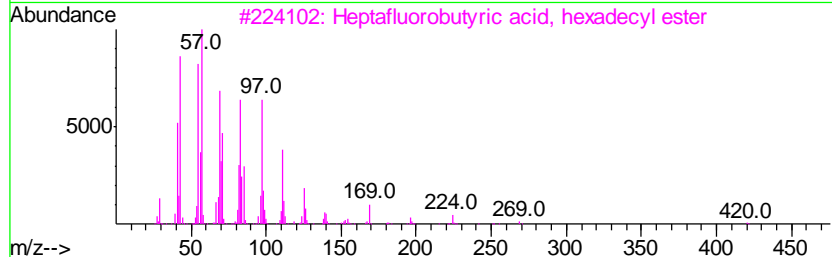
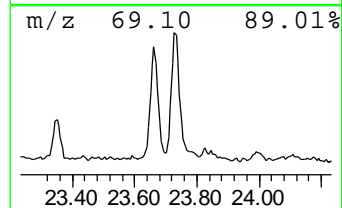
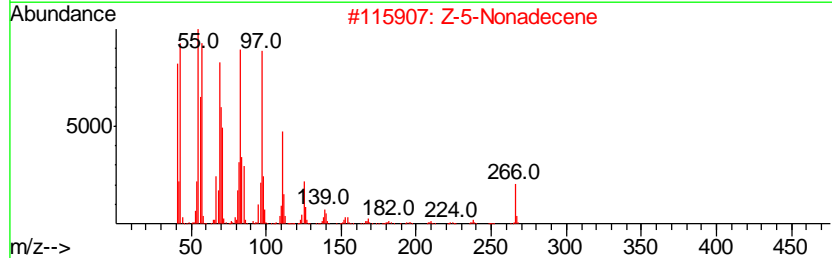
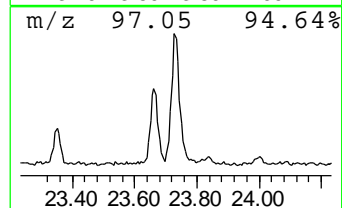
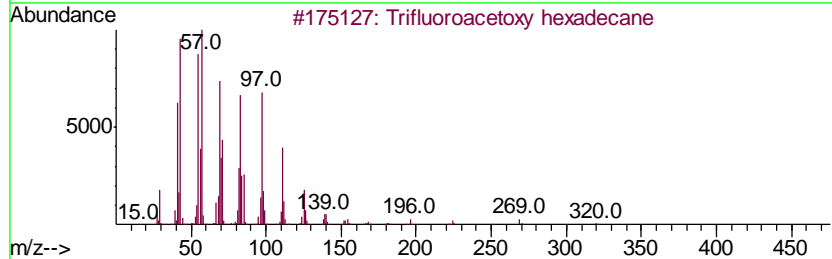
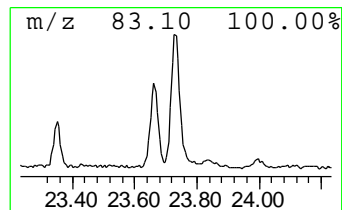
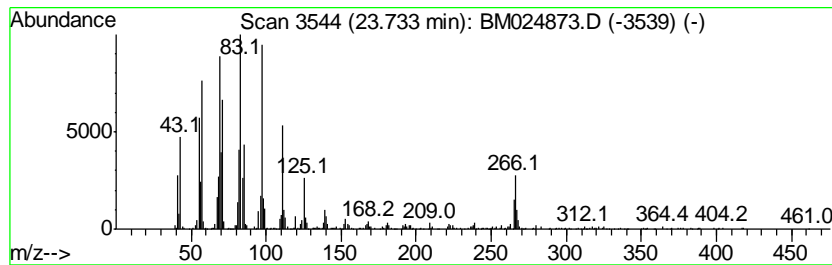
TIC Library : C:\DATABASE\NIST11.L  
 TIC Integration Parameters: LSCINT.P

\*\*\*\*\*  
 Peak Number 13 Trifluoroacetoxy hexadecane Concentration Rank 4

R.T.	EstConc	Area	Relative to ISTD	R.T.
23.73	4.14 ng/ul	1035860	Perylene-d12	23.11

Hit#	of	Tentative ID	MW	MolForm	CAS#	Qual
1	5	Trifluoroacetoxy hexadecane	338	C18H33F3O2	006222-03-3	87
2		Z-5-Nonadecene	266	C19H38	1000131-11-8	83
3		Heptafluorobutyric acid, hexadec...	438	C20H33F7O2	006385-15-5	68
4		Heptafluorobutyric acid, n-octad...	466	C22H37F7O2	000400-57-7	68
5		17-Pentatriacontene	491	C35H70	006971-40-0	64



Data Path : Z:\SVOASRV\HPCHEM1\BNA\_M\DATA\BM021320\  
 Data File : BM024873.D  
 Acq On : 14 Feb 2020 02:45  
 Operator : CG/JU  
 Sample : L1404-15  
 Misc :  
 ALS Vial : 18 Sample Multiplier: 1

Instrument :  
 BNA\_M  
 ClientSampleId :  
 CB6N9

Quant Method : Z:\SVOASRV\HPCHEM1\BNA\_M\METHODS\SOM-EPA-BM020620MA.M  
 Quant Title : SVOA CALIBRATION

TIC Library : C:\DATABASE\NIST11.L  
 TIC Integration Parameters: LSCINT.P

TIC Top Hit name	RT	EstConc	Units	Response	--Internal Standard--			
					#	RT	Resp	Conc
Phenanthrene, 2-m...	17.68	3.1	ng/ul	824221	4	16.80	5284750	20.0
Phenanthrene, 1-m...	17.73	4.4	ng/ul	1169850	4	16.80	5284750	20.0
4H-Cyclopenta[def...	17.87	4.8	ng/ul	1268900	4	16.80	5284750	20.0
Anthracene, 2-met...	17.91	2.0	ng/ul	533979	4	16.80	5284750	20.0
Naphthalene, 2-ph...	18.19	2.3	ng/ul	612286	4	16.80	5284750	20.0
Phenanthrene, 2,5...	18.62	2.4	ng/ul	631687	4	16.80	5284750	20.0
(DEL) Alkane: Str...	20.77	3.8	ng/ul	1906430	5	21.02	10116200	20.0
Sulfurous acid, 2...	21.64	2.2	ng/ul	1121980	5	21.02	10116200	20.0
Octadecanal	22.28	2.6	ng/ul	639174	6	23.11	4999400	20.0
Benzo[e]pyrene	22.66	2.5	ng/ul	629711	6	23.11	4999400	20.0
unknown-01	23.35	2.2	ng/ul	558230	6	23.11	4999400	20.0
(DEL) Alkane: Str...	23.66	6.9	ng/ul	1716070	6	23.11	4999400	20.0
Trifluoroacetoxy ...	23.73	4.1	ng/ul	1035860	6	23.11	4999400	20.0