

Data Path : Z:\SVOASRV\HPCHEM1\BNA M\DATA\BM021320\  
 Data File : BM024880.D  
 Acq On : 14 Feb 2020 07:33  
 Operator : CG/JU  
 Sample : PB126701BL  
 Misc :  
 ALS Vial : 24 Sample Multiplier: 1

Instrument :  
 BNA\_M  
 ClientSampleId :  
 SBLK01

Integration Parameters: LSCINT.P

Integrator: RTE  
 Smoothing : OFF  
 Sampling : 1  
 Start Thrs: 0.2  
 Stop Thrs : 0

Filtering: 5  
 Min Area: 0.1 % of largest Peak  
 Max Peaks: 100  
 Peak Location: TOP

If leading or trailing edge < 100 prefer < Baseline drop else tangent >  
 Peak separation: 5

Method : Z:\SVOASRV\HPCHEM1\BNA\_M\METHODS\SOM-EPA-BM020620MA.M  
 Title : SVOA CALIBRATION

Signal : TIC

peak #	R.T. min	first scan	max scan	last scan	PK TY	peak height	corr. area	corr. % max.	% of total
1	3.034	21	25	37	rVB	67841	157752	1.76%	0.161%
2	3.722	138	142	144	rBV3	9830	15408	0.17%	0.016%
3	3.946	175	180	183	rBV4	9825	17865	0.20%	0.018%
4	6.592	623	630	641	rBV	1634812	2645422	29.49%	2.702%
5	6.751	650	657	667	rBV	1423686	2253186	25.11%	2.302%
6	6.934	681	688	706	rVB	1853381	3079961	34.33%	3.146%
7	7.392	759	766	775	rBV	1378456	2170977	24.20%	2.218%
8	8.104	880	887	901	rBV	2137289	3406145	37.96%	3.479%
9	8.534	952	960	970	rBV	1547124	2582709	28.79%	2.638%
10	9.245	1074	1081	1095	rBV	1404082	2282122	25.44%	2.331%
11	9.780	1165	1172	1188	rBV	2210016	3679847	41.02%	3.759%
12	10.145	1227	1234	1242	rBV	1753663	2792711	31.13%	2.853%
13	10.286	1250	1258	1279	rBV	1785853	3313149	36.93%	3.384%
14	11.751	1501	1507	1514	rBV3	33862	62312	0.69%	0.064%
15	13.468	1792	1799	1810	rBV	3529093	4793126	53.42%	4.896%
16	13.727	1836	1843	1855	rBV	4247566	6200446	69.11%	6.334%
17	13.886	1865	1870	1876	rBV3	34427	70633	0.79%	0.072%
18	14.039	1890	1896	1905	rBV	2507268	3705796	41.30%	3.785%
19	14.268	1928	1935	1955	rBV	1122922	2015768	22.47%	2.059%
20	15.045	2060	2067	2080	rBV	5308341	7411156	82.60%	7.570%
21	15.180	2084	2090	2104	rVV	1421438	2014284	22.45%	2.058%
22	15.286	2104	2108	2115	rVB2	63288	87315	0.97%	0.089%
23	15.833	2193	2201	2206	rBV3	18789	29516	0.33%	0.030%
24	16.480	2307	2311	2316	rVB5	9063	12103	0.13%	0.012%
25	16.586	2323	2329	2336	rVB	10202	16995	0.19%	0.017%
26	16.798	2358	2365	2374	rBV	3040220	4183400	46.63%	4.273%
27	16.898	2375	2382	2393	rBV	5377471	7446035	82.99%	7.606%
28	18.033	2571	2575	2580	rBV3	16423	25306	0.28%	0.026%
29	18.839	2707	2712	2717	rBV	63739	87048	0.97%	0.089%
30	18.950	2728	2731	2735	rVB4	17679	18908	0.21%	0.019%
31	19.092	2751	2755	2760	rVB	44754	63333	0.71%	0.065%
32	19.203	2768	2774	2784	rBV	6784977	8971842	100.00%	9.165%
33	20.250	2950	2952	2956	rVB4	32264	32615	0.36%	0.033%
34	21.009	3076	3081	3093	rBV	3698114	4756151	53.01%	4.858%

Data Path : Z:\SVOASRV\HPCHEM1\BNA M\DATA\BM021320\  
 Data File : BM024880.D  
 Acq On : 14 Feb 2020 07:33  
 Operator : CG/JU  
 Sample : PB126701BL  
 Misc :  
 ALS Vial : 24 Sample Multiplier: 1

Instrument :  
 BNA\_M  
 ClientSampleId :  
 SBLK01

Integration Parameters: LSCINT.P  
 Integrator: RTE  
 Smoothing : OFF Filtering: 5  
 Sampling : 1 Min Area: 0.1 % of largest Peak  
 Start Thrs: 0.2 Max Peaks: 100  
 Stop Thrs : 0 Peak Location: TOP

If leading or trailing edge < 100 prefer < Baseline drop else tangent >  
 Peak separation: 5

Method : Z:\SVOASRV\HPCHEM1\BNA\_M\METHODS\SOM-EPA-BM020620MA.M  
 Title : SVOA CALIBRATION

35	21.215	3114	3116	3121	rBV3	67784	75534	0.84%	0.077%
36	21.633	3185	3187	3191	rVB	143719	152008	1.69%	0.155%
37	22.068	3258	3261	3267	rVB2	299491	383645	4.28%	0.392%
38	22.544	3338	3342	3347	rVB	454971	602042	6.71%	0.615%
39	22.980	3409	3416	3425	rBV	5191031	8777520	97.83%	8.966%
40	23.068	3426	3431	3433	rVV	576716	906055	10.10%	0.926%
41	23.109	3433	3438	3449	rVB	2669745	4623412	51.53%	4.723%
42	23.656	3526	3531	3540	rVB	551345	961722	10.72%	0.982%
43	24.338	3642	3647	3657	rVB	491461	1013275	11.29%	1.035%

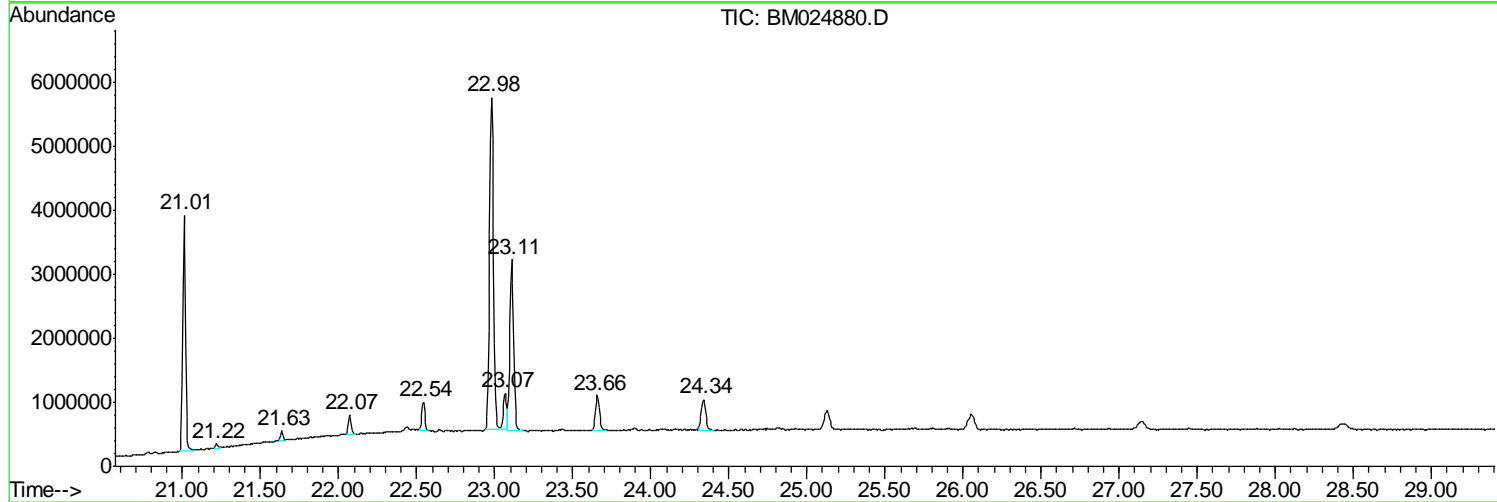
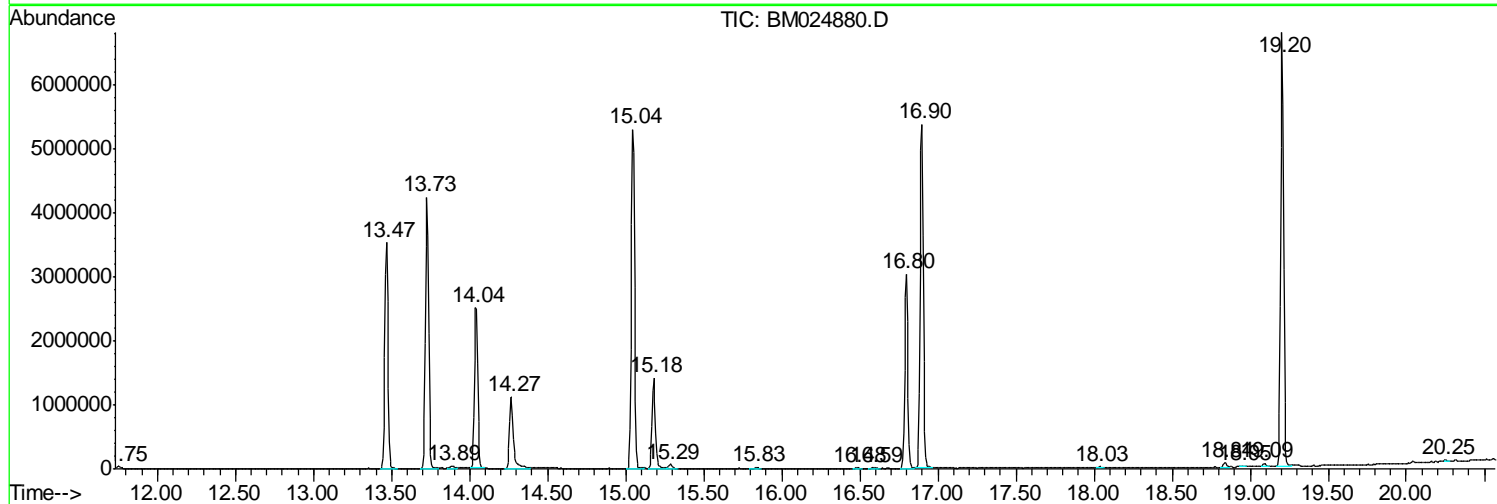
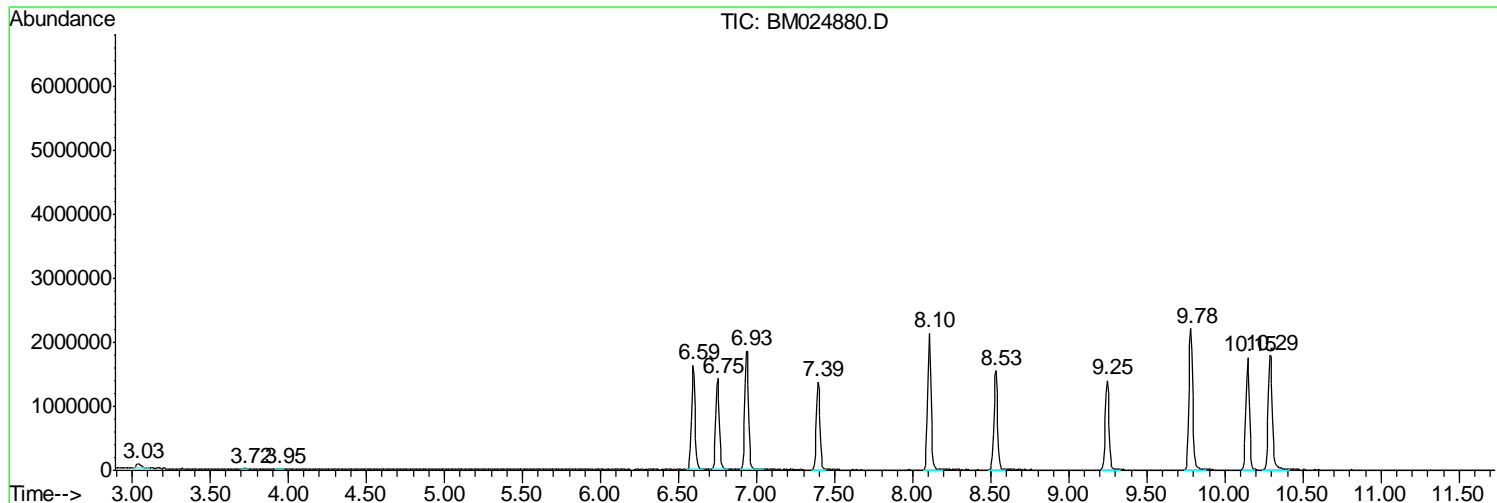
Sum of corrected areas: 97896555

Data Path : Z:\SVOASRV\HPCHEM1\BNA M\DATA\BM021320\  
 Data File : BM024880.D  
 Acq On : 14 Feb 2020 07:33  
 Operator : CG/JU  
 Sample : PB126701BL  
 Misc :  
 ALS Vial : 24 Sample Multiplier: 1

**Instrument :**  
 BNA\_M  
**ClientSampleId :**  
 SBLK01

Quant Method : Z:\SVOASRV\HPCHEM1\BNA\_M\METHODS\SOM-EPA-BM020620MA.M  
 Quant Title : SVOA CALIBRATION

TIC Library : C:\DATABASE\NIST11.L  
 TIC Integration Parameters: LSCINT.P



Data Path : Z:\SVOASRV\HPCHEM1\BNA M\DATA\BM021320\  
 Data File : BM024880.D  
 Acq On : 14 Feb 2020 07:33  
 Operator : CG/JU  
 Sample : PB126701BL  
 Misc :  
 ALS Vial : 24 Sample Multiplier: 1

Instrument :  
 BNA\_M  
 ClientSampleID :  
 SBLK01

Quant Method : Z:\SVOASRV\HPCHEM1\BNA\_M\METHODS\SOM-EPA-BM020620MA.M  
 Quant Title : SVOA CALIBRATION

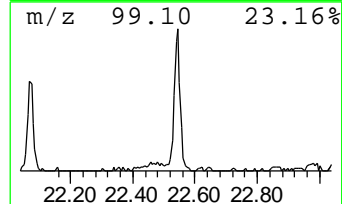
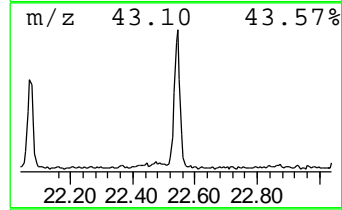
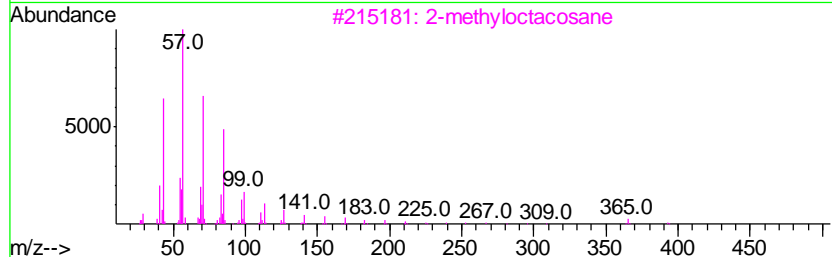
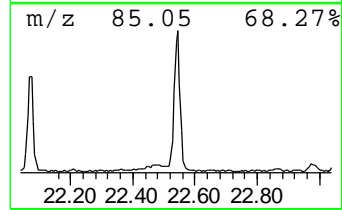
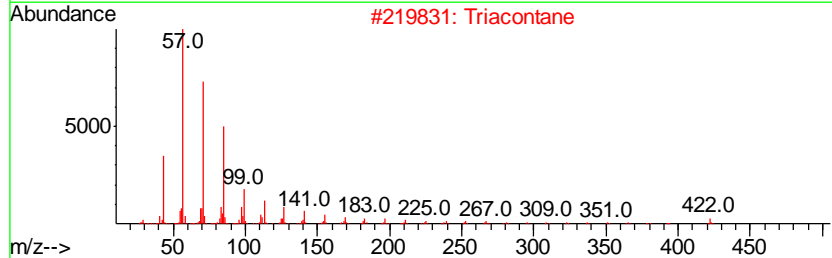
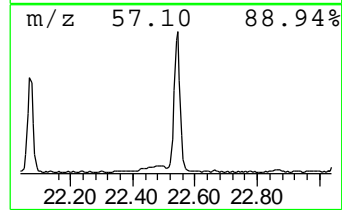
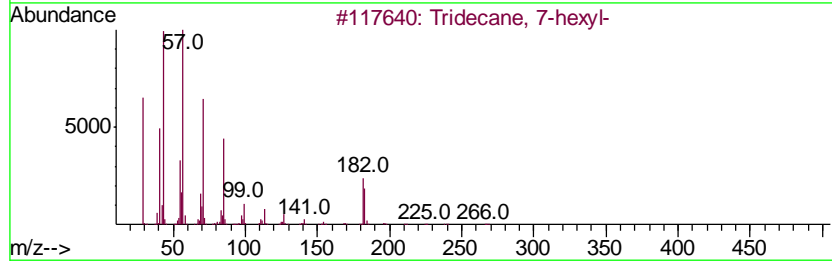
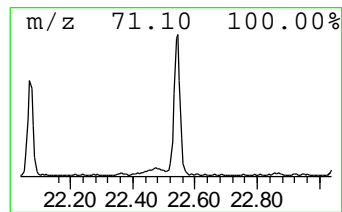
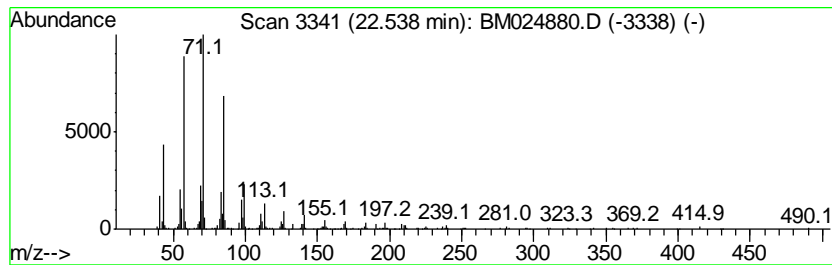
TIC Library : C:\DATABASE\NIST11.L  
 TIC Integration Parameters: LSCINT.P

\*\*\*\*\*  
 Peak Number 1 (DEL) Alkane: Straight-Chai... Concentration Rank 3

R.T.	EstConc	Area	Relative to ISTD	R.T.
22.54	2.60 ng/ul	602042	Perylene-d12	23.11

Hit#	of	Tentative ID	MW	MolForm	CAS#	Qual
1	5	Tridecane, 7-hexyl-	268	C19H40	007225-66-3	91
2		triacontane	422	C30H62	000638-68-6	87
3		2-methyloctacosane	408	C29H60	1000376-72-8	87
4		Hexacosane	366	C26H54	000630-01-3	83
5		Tetratetracontane	619	C44H90	007098-22-8	81



Data Path : Z:\SVOASRV\HPCHEM1\BNA M\DATA\BM021320\  
 Data File : BM024880.D  
 Acq On : 14 Feb 2020 07:33  
 Operator : CG/JU  
 Sample : PB126701BL  
 Misc :  
 ALS Vial : 24 Sample Multiplier: 1

Instrument :  
 BNA\_M  
 ClientSampleID :  
 SBLK01

Quant Method : Z:\SVOASRV\HPCHEM1\BNA\_M\METHODS\SOM-EPA-BM020620MA.M  
 Quant Title : SVOA CALIBRATION

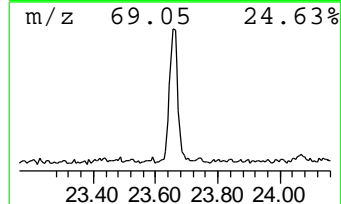
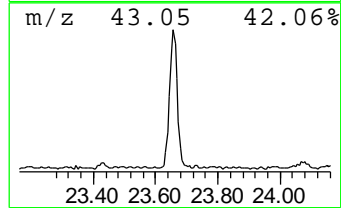
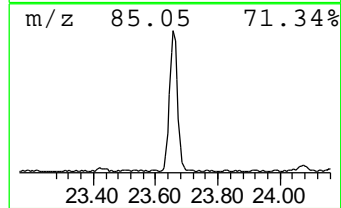
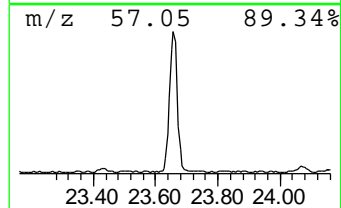
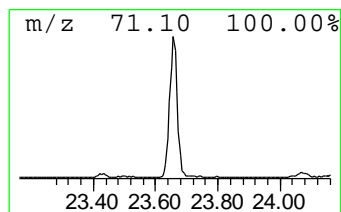
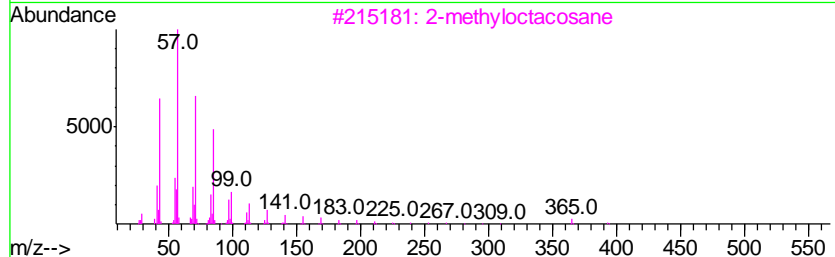
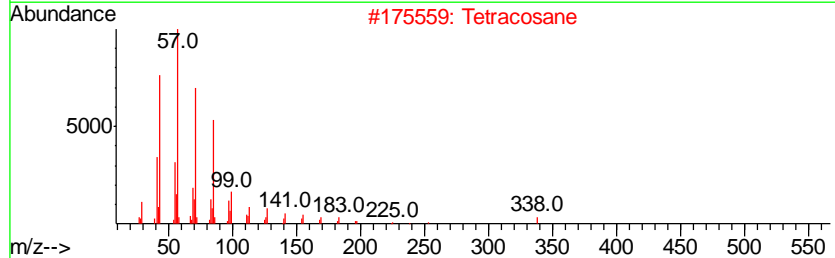
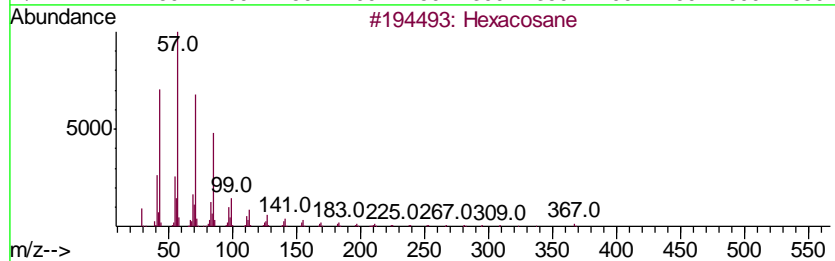
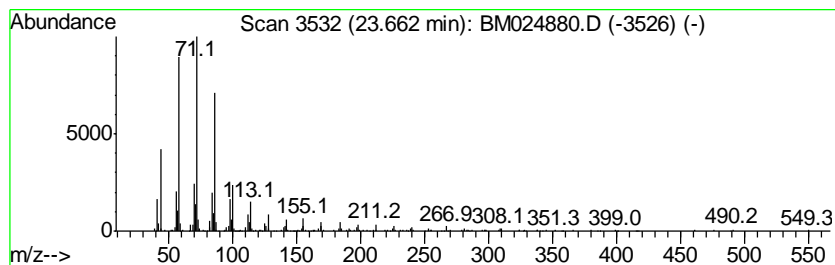
TIC Library : C:\DATABASE\NIST11.L  
 TIC Integration Parameters: LSCINT.P

\*\*\*\*\*  
 Peak Number 2 (DEL) Alkane: Straight-Chai... Concentration Rank 2

R.T.	EstConc	Area	Relative to ISTD	R.T.
23.66	4.16 ng/ul	961722	Perylene-d12	23.11

Hit#	of	Tentative ID	MW	MolForm	CAS#	Qual
1	5	Hexacosane	366	C26H54	000630-01-3	91
2		Tetracosane	338	C24H50	000646-31-1	91
3		2-methyloctacosane	408	C29H60	1000376-72-8	91
4		Heptacosane	380	C27H56	000593-49-7	91
5		Tetracosane	338	C24H50	000646-31-1	91



Data Path : Z:\SVOASRV\HPCHEM1\BNA M\DATA\BM021320\  
 Data File : BM024880.D  
 Acq On : 14 Feb 2020 07:33  
 Operator : CG/JU  
 Sample : PB126701BL  
 Misc :  
 ALS Vial : 24 Sample Multiplier: 1

Instrument :  
 BNA\_M  
 ClientSampled :  
 SBLK01

Quant Method : Z:\SVOASRV\HPCHEM1\BNA\_M\METHODS\SOM-EPA-BM020620MA.M  
 Quant Title : SVOA CALIBRATION

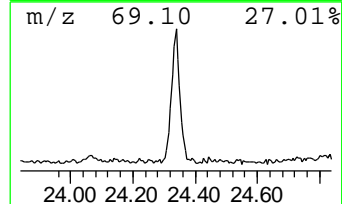
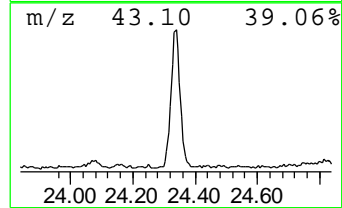
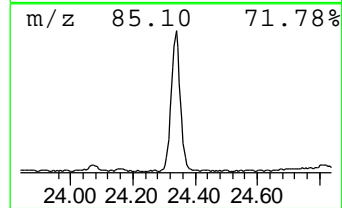
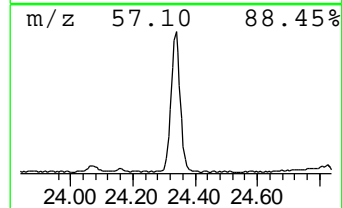
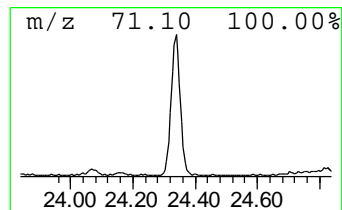
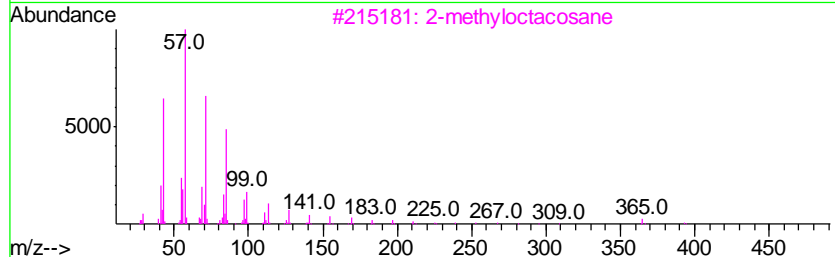
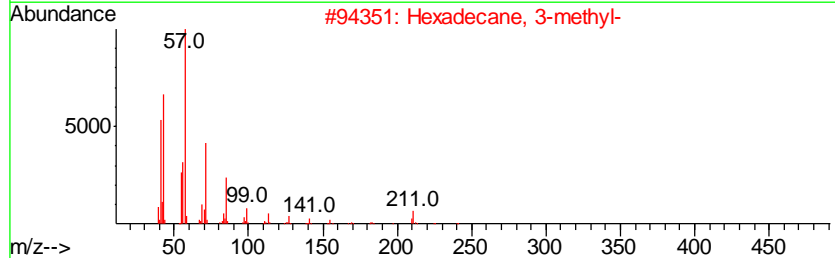
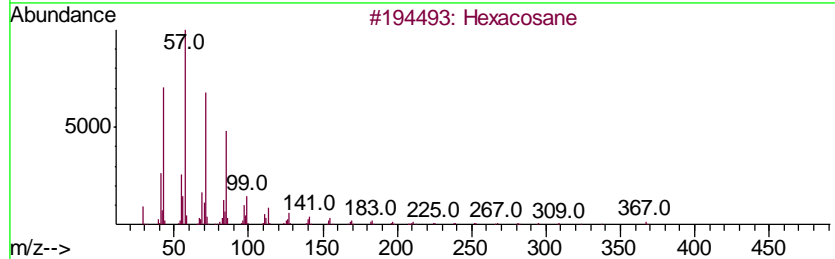
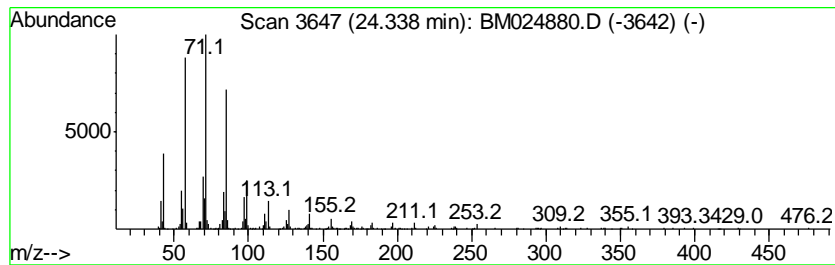
TIC Library : C:\DATABASE\NIST11.L  
 TIC Integration Parameters: LSCINT.P

\*\*\*\*\*  
 Peak Number 3 (DEL) Alkane: Straight-Chai... Concentration Rank 1

R.T.	EstConc	Area	Relative to ISTD	R.T.
24.34	4.38 ng/ul	1013280	Perylene-d12	23.11

Hit#	of	Tentative ID	MW	MolForm	CAS#	Qual
1	5	Hexacosane	366	C26H54	000630-01-3	90
2		Hexadecane, 3-methyl-	240	C17H36	006418-43-5	90
3		2-methyloctacosane	408	C29H60	1000376-72-8	90
4		Heptacosane	380	C27H56	000593-49-7	87
5		Hentriacontane	437	C31H64	000630-04-6	87



Data Path : Z:\SVOASRV\HPCHEM1\BNA\_M\DATA\BM021320\  
Data File : BM024880.D  
Acq On : 14 Feb 2020 07:33  
Operator : CG/JU  
Sample : PB126701BL  
Misc :  
ALS Vial : 24 Sample Multiplier: 1

Instrument :  
BNA\_M  
ClientSampleId :  
SBLK01

Quant Method : Z:\SVOASRV\HPCHEM1\BNA\_M\METHODS\SOM-EPA-BM020620MA.M  
Quant Title : SVOA CALIBRATION

TIC Library : C:\DATABASE\NIST11.L  
TIC Integration Parameters: LSCINT.P

TIC Top Hit name	RT	EstConc	Units	Response	--Internal Standard--			
					#	RT	Resp	Conc
(DEL) Alkane: Str...	22.54	2.6	ng/ul	602042	6	23.11	4623410	20.0
(DEL) Alkane: Str...	23.66	4.2	ng/ul	961722	6	23.11	4623410	20.0
(DEL) Alkane: Str...	24.34	4.4	ng/ul	1013280	6	23.11	4623410	20.0