

Data Path : Z:\svoasrv\HPCHEM1\BNA_M\Data\BM022422\
 Data File : BM034069.D
 Acq On : 24 Feb 2022 16:10
 Operator : CG/JU
 Sample : PB142887TB
 Misc :
 ALS Vial : 7 Sample Multiplier: 1

Instrument :
 BNA_M
 ClientSampleId :
 PB142887TB

Quant Time: Feb 25 01:10:46 2022
 Quant Method : Z:\svoasrv\HPCHEM1\BNA_M\Methods\8270-BM022222.M
 Quant Title : ASP BNA STANDARDS FOR 5 POINT CALIBRATION
 QLast Update : Tue Feb 22 17:55:56 2022
 Response via : Initial Calibration

Compound	R.T.	QIon	Response	Conc	Units	Dev(Min)
Internal Standards						
1) 1,4-Dichlorobenzene-d4	8.013	152	186836	20.000	ng	-0.01
21) Naphthalene-d8	10.830	136	685142	20.000	ng	# 0.00
39) Acenaphthene-d10	14.648	164	441634	20.000	ng	0.00
64) Phenanthrene-d10	17.389	188	899599	20.000	ng	# 0.00
76) Chrysene-d12	21.559	240	759819	20.000	ng	# 0.00
86) Perylene-d12	24.018	264	732700	20.000	ng	0.00
System Monitoring Compounds						
5) 2-Fluorophenol	5.566	112	1446172	137.981	ng	0.00
7) Phenol-d6	7.166	99	1743546	126.683	ng	0.00
23) Nitrobenzene-d5	9.178	82	1127021	88.770	ng	0.00
42) 2,4,6-Tribromophenol	16.130	330	794642	148.254	ng	0.00
45) 2-Fluorobiphenyl	13.277	172	2996167	90.387	ng	-0.01
79) Terphenyl-d14	20.006	244	4280134	98.091	ng	0.00

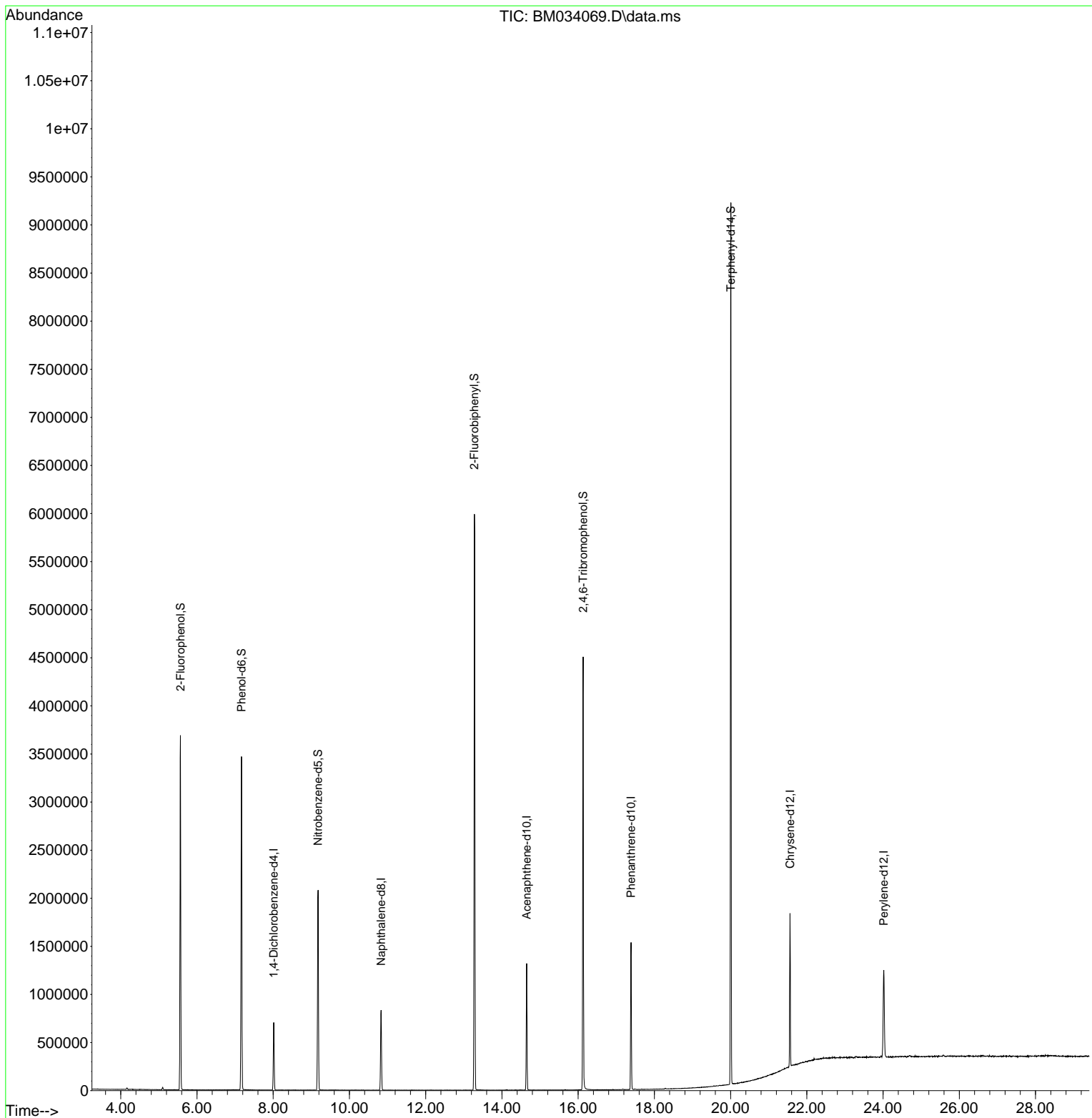
Target Compounds Qvalue

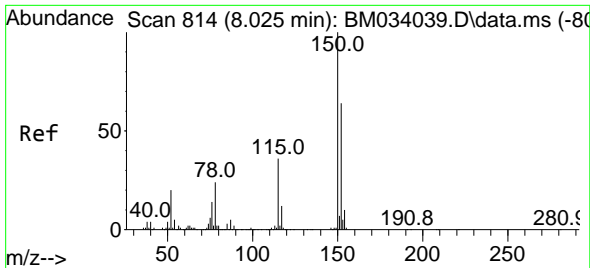
(#) = qualifier out of range (m) = manual integration (+) = signals summed

Data Path : Z:\svoasrv\HPCHEM1\BNA_M\Data\BM022422\
 Data File : BM034069.D
 Acq On : 24 Feb 2022 16:10
 Operator : CG/JU
 Sample : PB142887B
 Misc :
 ALS Vial : 7 Sample Multiplier: 1

Instrument :
 BNA_M
 ClientSampleId :
 PB142887B

Quant Time: Feb 25 01:10:46 2022
 Quant Method : Z:\svoasrv\HPCHEM1\BNA_M\Methods\8270-BM022222.M
 Quant Title : ASP BNA STANDARDS FOR 5 POINT CALIBRATION
 QLast Update : Tue Feb 22 17:55:56 2022
 Response via : Initial Calibration

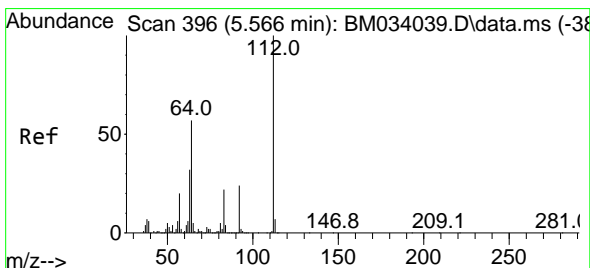
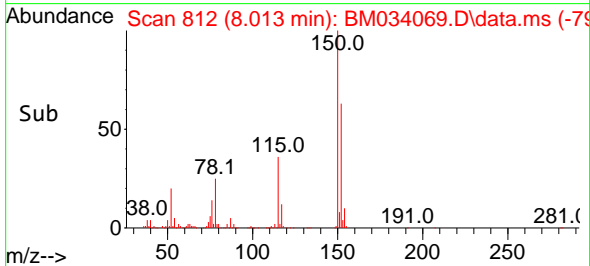
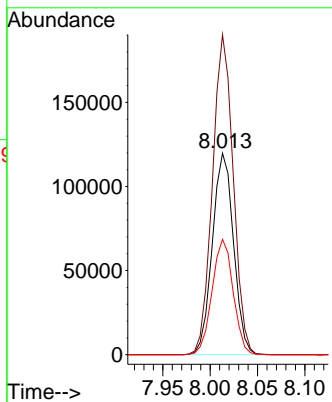
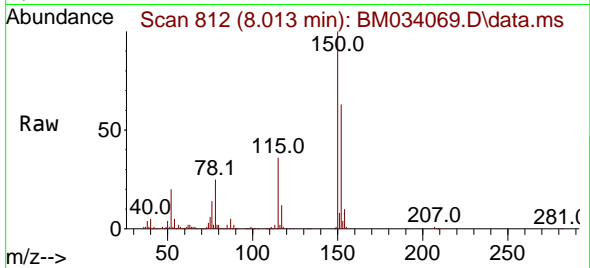




#1
 1,4-Dichlorobenzene-d4
 Concen: 20.000 ng
 RT: 8.013 min Scan# 814
 Delta R.T. -0.012 min
 Lab File: BM034069.D
 Acq: 24 Feb 2022 16:10

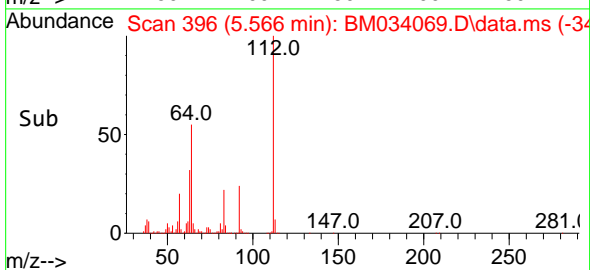
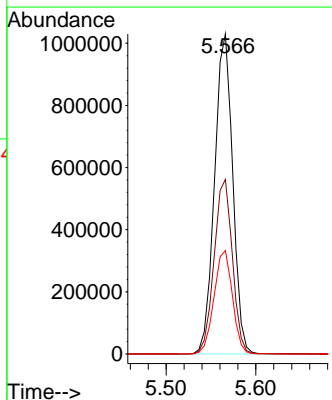
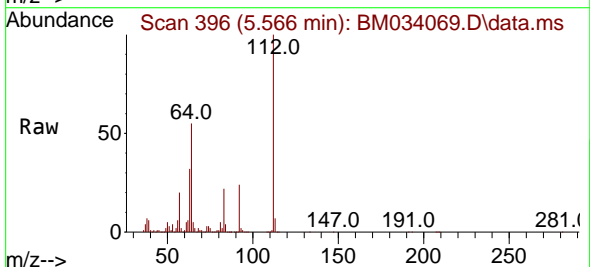
Instrument :
 BNA_M
 ClientSampleId :
 PB142887TB

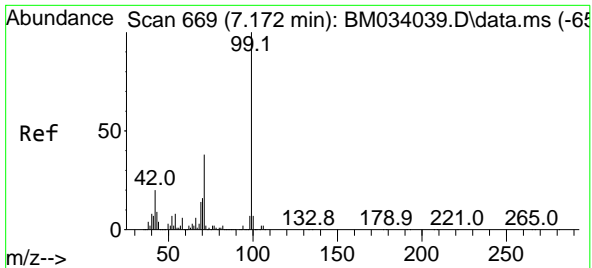
Tgt Ion:152 Resp: 186836
 Ion Ratio Lower Upper
 152 100
 150 158.8 128.9 193.3
 115 57.2 53.0 79.6



#5
 2-Fluorophenol
 Concen: 137.981 ng
 RT: 5.566 min Scan# 396
 Delta R.T. -0.000 min
 Lab File: BM034069.D
 Acq: 24 Feb 2022 16:10

Tgt Ion:112 Resp: 1446172
 Ion Ratio Lower Upper
 112 100
 64 54.6 55.5 83.3#
 63 32.3 31.3 46.9



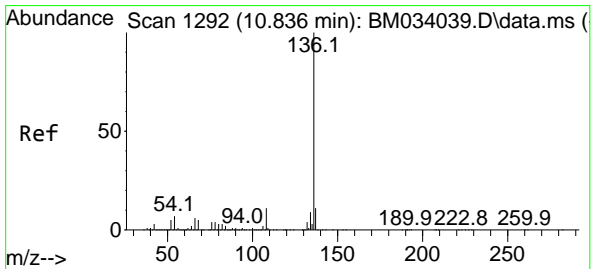
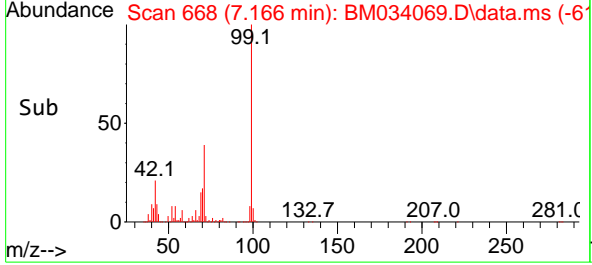
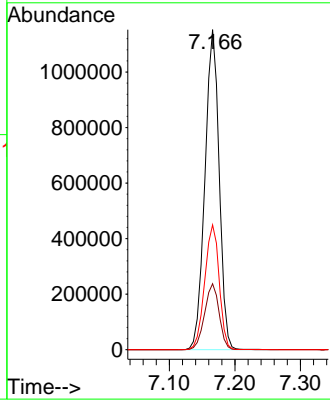
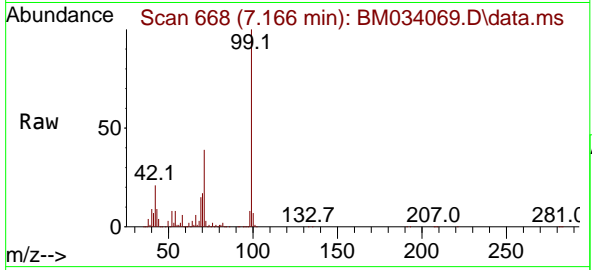


#7
 Phenol-d6
 Concen: 126.683 ng
 RT: 7.166 min Scan# 60
 Delta R.T. -0.006 min
 Lab File: BM034069.D
 Acq: 24 Feb 2022 16:10

Instrument :
 BNA_M
 ClientSampleId :
 PB142887TB

Tgt Ion: 99 Resp: 1743546

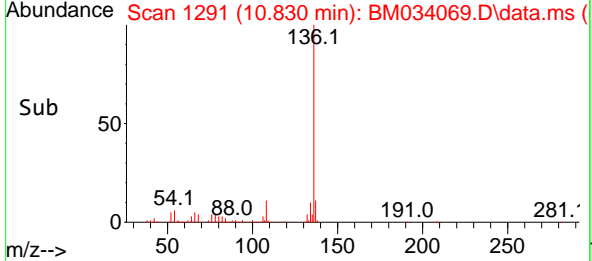
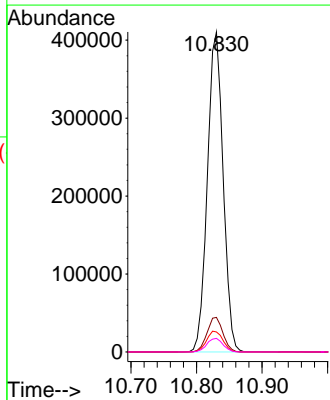
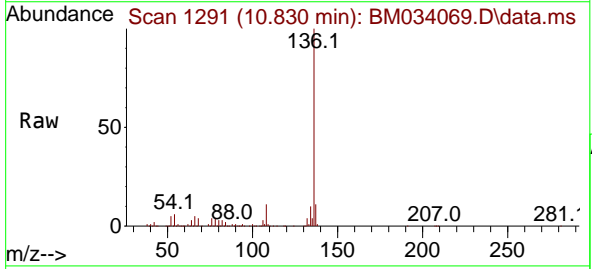
Ion	Ratio	Lower	Upper
99	100		
42	20.6	20.3	30.5
71	39.0	34.5	51.7

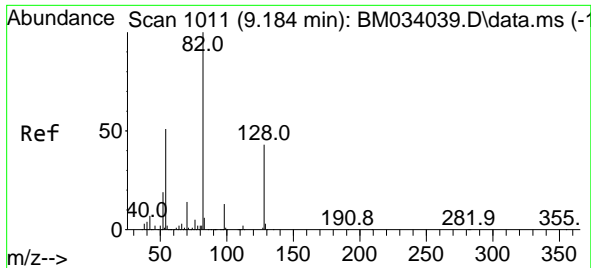


#21
 Naphthalene-d8
 Concen: 20.000 ng
 RT: 10.830 min Scan# 1291
 Delta R.T. -0.006 min
 Lab File: BM034069.D
 Acq: 24 Feb 2022 16:10

Tgt Ion: 136 Resp: 685142

Ion	Ratio	Lower	Upper
136	100		
137	10.8	8.6	13.0
54	6.3	8.3	12.5#
68	4.2	5.0	7.6#



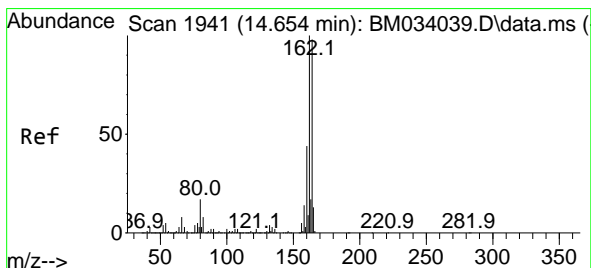
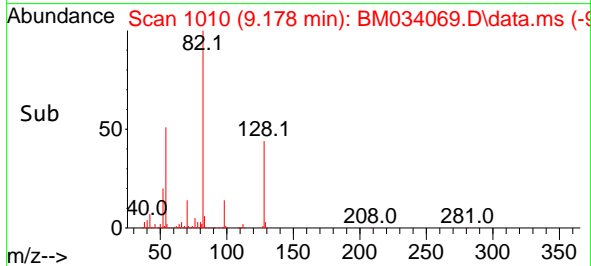
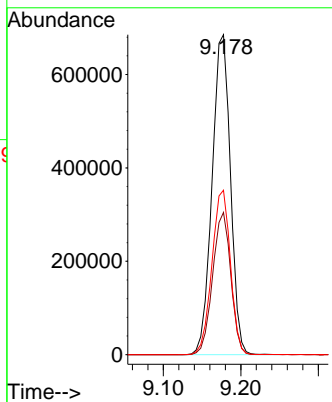
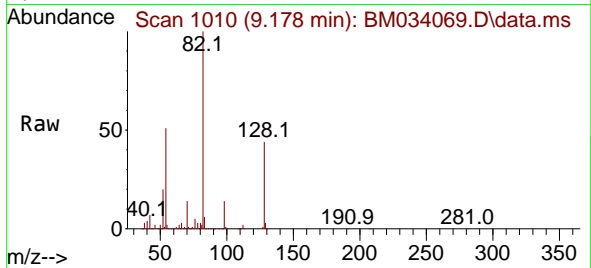


#23
 Nitrobenzene-d5
 Concen: 88.770 ng
 RT: 9.178 min Scan# 1011
 Delta R.T. -0.006 min
 Lab File: BM034069.D
 Acq: 24 Feb 2022 16:10

Instrument : BNA_M
 ClientSampleId : PB142887TB

Tgt Ion: 82 Resp: 1127021

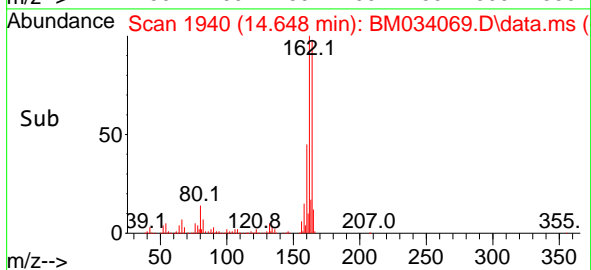
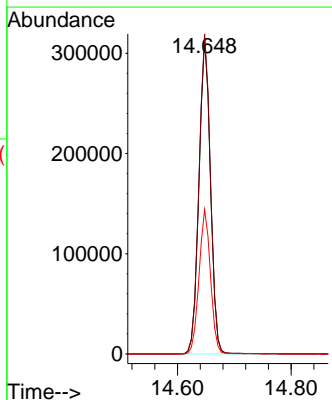
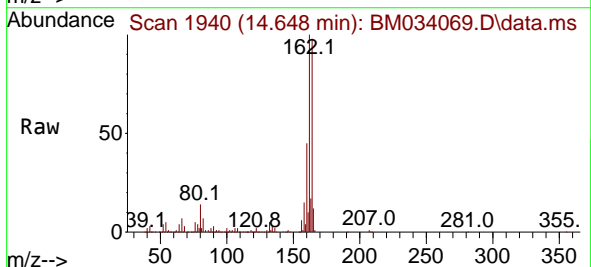
Ion	Ratio	Lower	Upper
82	100		
128	44.4	28.1	42.1#
54	51.4	46.1	69.1

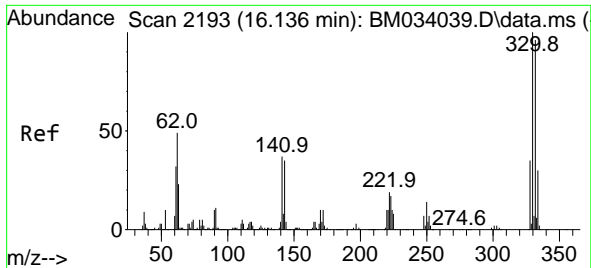


#39
 Acenaphthene-d10
 Concen: 20.000 ng
 RT: 14.648 min Scan# 1940
 Delta R.T. -0.006 min
 Lab File: BM034069.D
 Acq: 24 Feb 2022 16:10

Tgt Ion: 164 Resp: 441634

Ion	Ratio	Lower	Upper
164	100		
162	101.6	79.7	119.5
160	45.8	34.2	51.4

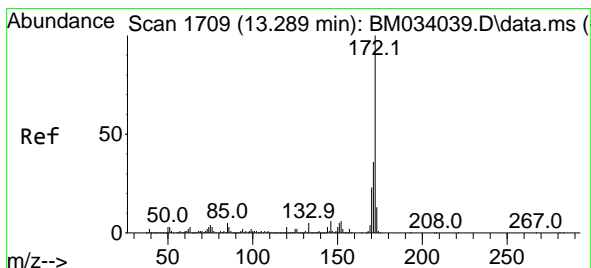
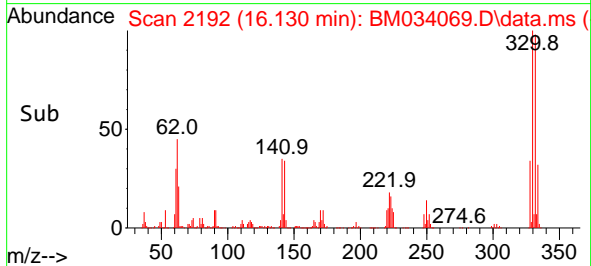
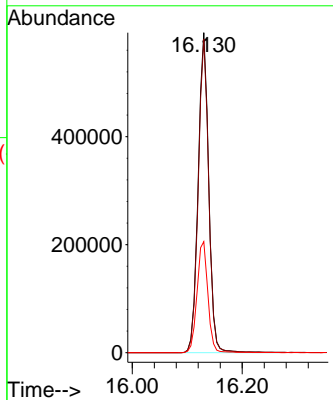
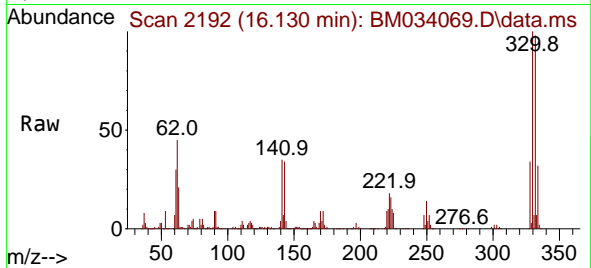




#42
 2,4,6-Tribromophenol
 Concen: 148.254 ng
 RT: 16.130 min Scan# 2192
 Delta R.T. -0.006 min
 Lab File: BM034069.D
 Acq: 24 Feb 2022 16:10

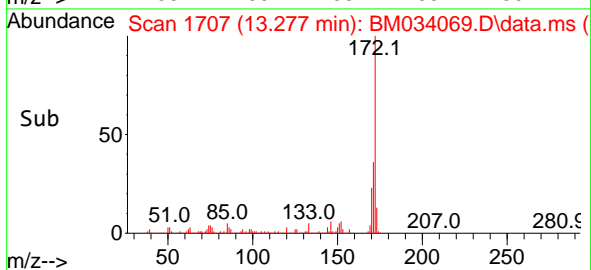
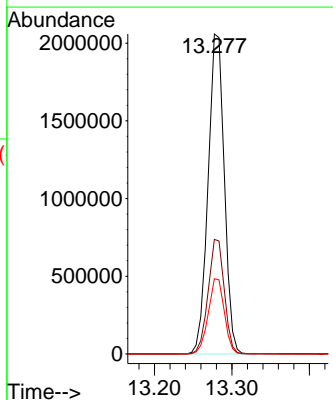
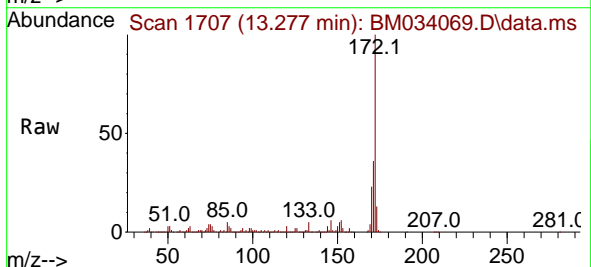
Instrument : BNA_M
 ClientSampleId : PB142887TB

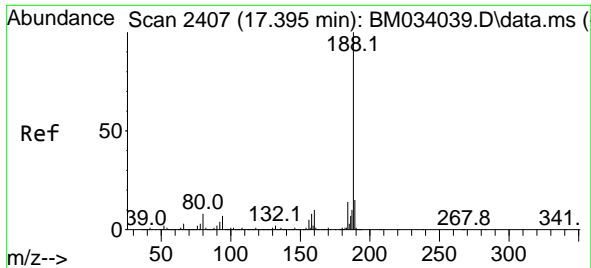
Tgt Ion:330 Resp: 794642
 Ion Ratio Lower Upper
 330 100
 332 97.2 76.5 114.7
 141 35.6 35.9 53.9#



#45
 2-Fluorobiphenyl
 Concen: 90.387 ng
 RT: 13.277 min Scan# 1707
 Delta R.T. -0.012 min
 Lab File: BM034069.D
 Acq: 24 Feb 2022 16:10

Tgt Ion:172 Resp: 2996167
 Ion Ratio Lower Upper
 172 100
 171 35.8 27.2 40.8
 170 23.5 18.7 28.1

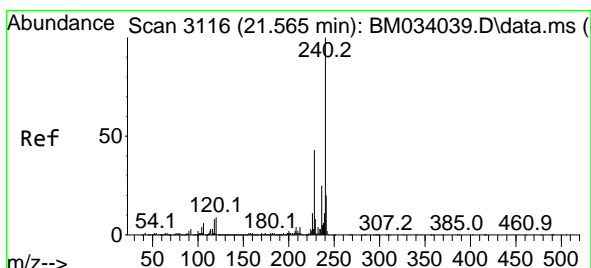
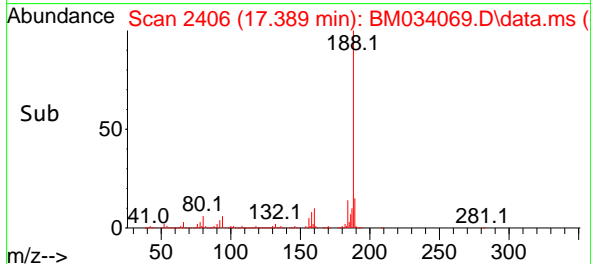
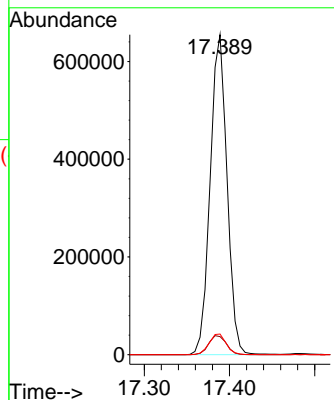
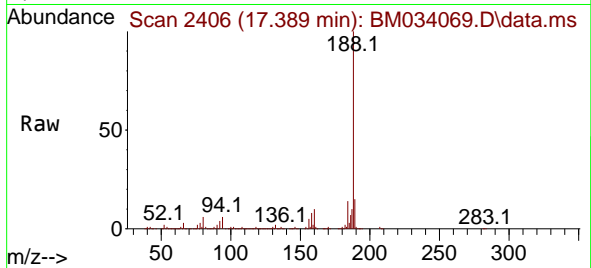




#64
 Phenanthrene-d10
 Concen: 20.000 ng
 RT: 17.389 min Scan# 24
 Delta R.T. -0.006 min
 Lab File: BM034069.D
 Acq: 24 Feb 2022 16:10

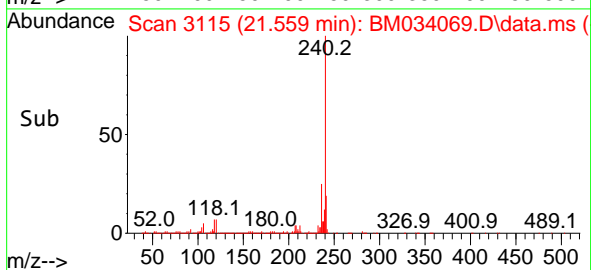
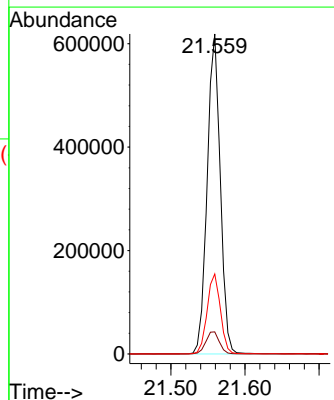
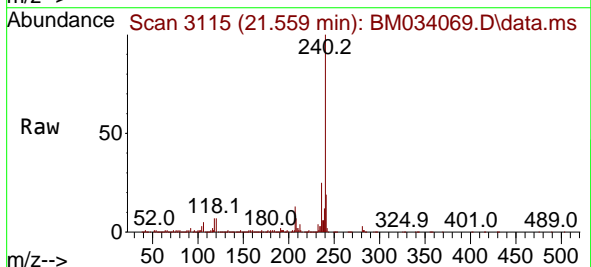
Instrument :
 BNA_M
 ClientSampleId :
 PB142887TB

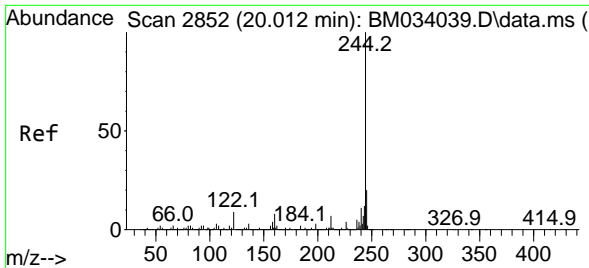
Tgt Ion:188 Resp: 899599
 Ion Ratio Lower Upper
 188 100
 94 5.7 7.5 11.3#
 80 6.4 8.9 13.3#



#76
 Chrysene-d12
 Concen: 20.000 ng
 RT: 21.559 min Scan# 3115
 Delta R.T. -0.006 min
 Lab File: BM034069.D
 Acq: 24 Feb 2022 16:10

Tgt Ion:240 Resp: 759819
 Ion Ratio Lower Upper
 240 100
 120 6.9 7.8 11.6#
 236 25.0 20.3 30.5



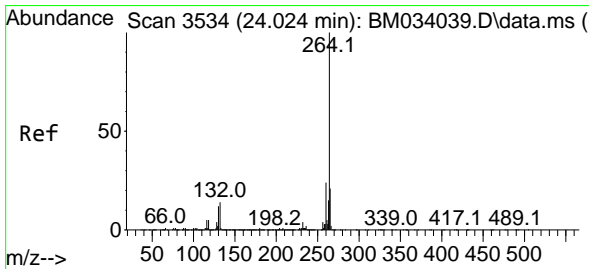
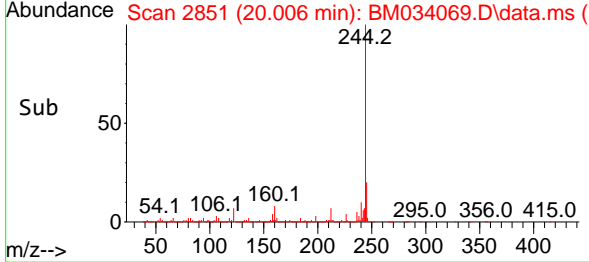
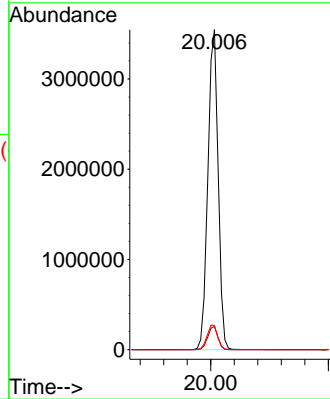
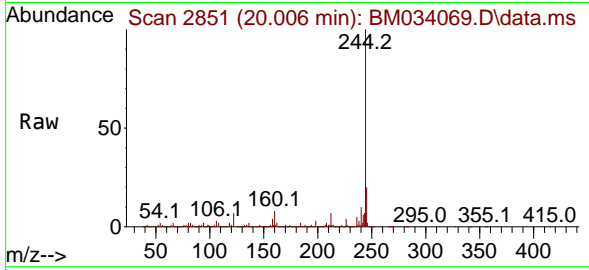


#79
 Terphenyl-d14
 Concen: 98.091 ng
 RT: 20.006 min Scan# 21
 Delta R.T. -0.006 min
 Lab File: BM034069.D
 Acq: 24 Feb 2022 16:10

Instrument :
 BNA_M
 ClientSampleId :
 PB142887TB

Tgt Ion:244 Resp: 4280134

Ion	Ratio	Lower	Upper
244	100		
212	7.2	5.9	8.9
122	7.5	8.4	12.6#



#86
 Perylene-d12
 Concen: 20.000 ng
 RT: 24.018 min Scan# 3533
 Delta R.T. -0.006 min
 Lab File: BM034069.D
 Acq: 24 Feb 2022 16:10

Tgt Ion:264 Resp: 732700

Ion	Ratio	Lower	Upper
264	100		
260	23.4	17.7	26.5
265	22.6	17.7	26.5

