

Data Path : Z:\svoasrv\HPCHEM1\BNA\_M\Data\BM050123\  
 Data File : BM039794.D  
 Acq On : 02 May 2023 01:15  
 Operator : CG/JU  
 Sample : 02417-15DL 5X  
 Misc :  
 ALS Vial : 25 Sample Multiplier: 1

Instrument :  
 BNA\_M  
 ClientSampleId :  
 EW8Y1DL

Manual Integrations  
 APPROVED

Reviewed By :Christian Giraldo 05/02/2023  
 Supervised By :Jagrut Upadhyay 05/02/2023

Quant Time: May 02 03:00:46 2023  
 Quant Method : Z:\SVOASRV\HPCHEM1\BNA\_M\METHODS\SFAM-EPA-SIM-BM042723.M  
 Quant Title : ASP BNA STANDARDS FOR 5 POINT CALIBRATION  
 QLast Update : Sat Apr 29 04:28:45 2023  
 Response via : Initial Calibration

Compound	R.T.	QIon	Response	Conc	Units	Dev(Min)
Internal Standards						
1) 1,4-Dichlorobenzene-d4	7.791	152	4025	0.400	ng/ul	-0.03
4) Naphthalene-d8	10.595	136	15324	0.400	ng/ul	-0.01
9) Acenaphthene-d10	14.451	164	9241	0.400	ng/ul	0.00
13) Phenanthrene-d10	17.204	188	18979	0.400	ng/ul	0.00
17) Chrysene-d12	21.404	240	8641	0.400	ng/ul	# 0.00
23) Perylene-d12	23.757	264	10378	0.400	ng/ul	# 0.01
System Monitoring Compounds						
3) 1,4-Dioxane-d8	3.188	96	2342	0.395	ng/ul	0.00
6) 2-Methylnaphthalene-d10	12.195	152	858	0.044	ng/ul	0.00
18) Fluoranthene-d10	19.239	212	1638	0.070	ng/ul	0.00
Target Compounds						
						Qvalue
5) Naphthalene	10.644	128	18424	0.479	ng/ul	99
7) 2-Methylnaphthalene	12.267	142	12109	0.545	ng/ul	96
8) 1-Methylnaphthalene	12.487	142	11716	0.492	ng/ul	100
10) Acenaphthylene	14.173	152	38169	1.067	ng/ul	99
11) Acenaphthene	14.511	153	21926	0.780	ng/ul	99
12) Fluorene	15.501	166	35068	1.125	ng/ul	99
15) Phenanthrene	17.246	178	641375	12.827	ng/ul	98
16) Anthracene	17.339	178	135680	3.160	ng/ul	97
19) Fluoranthene	19.271	202	1040275	33.745	ng/ul	97
20) Pyrene	19.634	202	887666	26.664	ng/ul	100
21) Benzo(a)anthracene	21.386	228	384948	15.494	ng/ul	99
22) Chrysene	21.439	228	360143	12.809	ng/ul	98
24) Benzo(b)fluoranthene	23.041	252	434886m	11.932	ng/ul	
25) Benzo(k)fluoranthene	23.081	252	155790m	4.198	ng/ul	
26) Benzo(a)pyrene	23.652	252	308024	9.413	ng/ul#	85
27) Indeno(1,2,3-cd)pyrene	26.192	276	213151	5.151	ng/ul#	92
28) Dibenzo(a,h)anthracene	26.199	278	58093	1.809	ng/ul	98
29) Benzo(g,h,i)perylene	26.947	276	195494	5.422	ng/ul	98

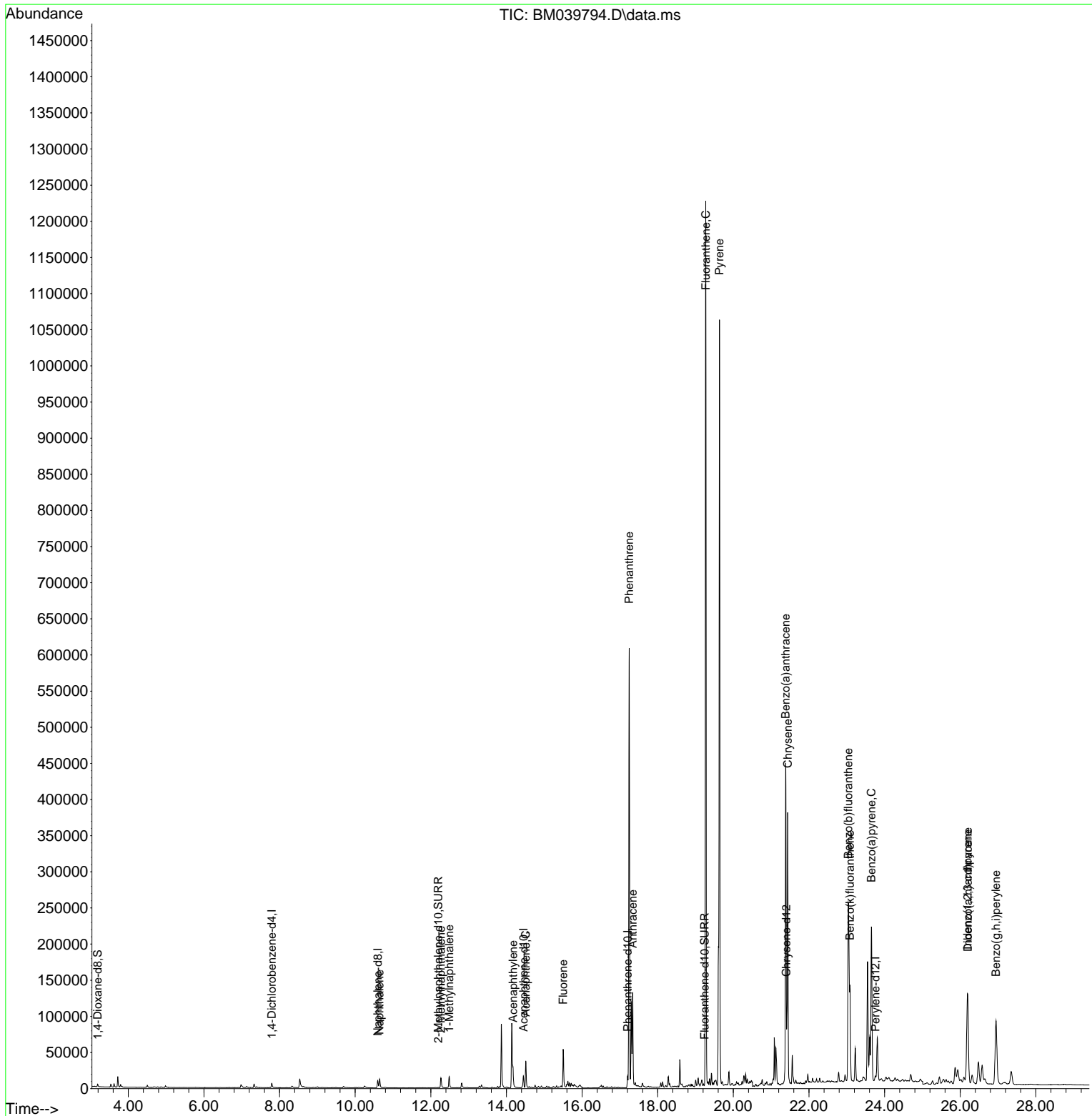
(#) = qualifier out of range (m) = manual integration (+) = signals summed

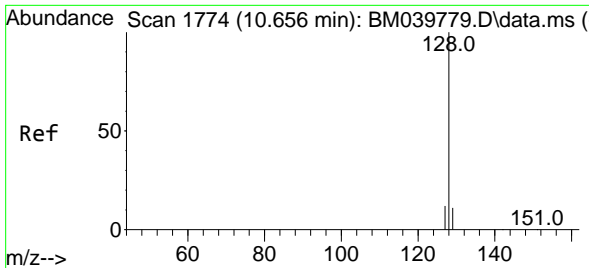
Data Path : Z:\svoasrv\HPCHEM1\BNA\_M\Data\BM050123\  
 Data File : BM039794.D  
 Acq On : 02 May 2023 01:15  
 Operator : CG/JU  
 Sample : 02417-15DL 5X  
 Misc :  
 ALS Vial : 25 Sample Multiplier: 1

**Instrument :**  
 BNA\_M  
**ClientSampleId :**  
 EW8Y1DL

Quant Time: May 02 03:00:46 2023  
 Quant Method : Z:\SVOASRV\HPCHEM1\BNA\_M\METHODS\SFAM-EPA-SIM-BM042723.M  
 Quant Title : ASP BNA STANDARDS FOR 5 POINT CALIBRATION  
 QLast Update : Sat Apr 29 04:28:45 2023  
 Response via : Initial Calibration

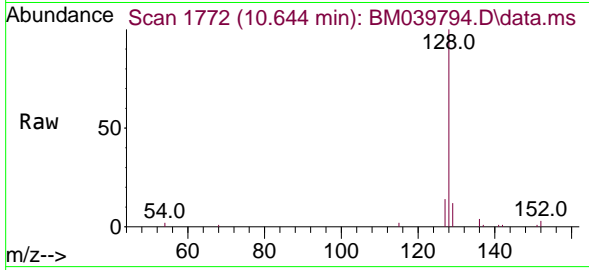
**Manual Integrations**  
**APPROVED**  
 Reviewed By :Christian Giraldo 05/02/2023  
 Supervised By :Jagrut Upadhyay 05/02/2023





#5  
 Naphthalene  
 Concen: 0.479 ng/uI  
 RT: 10.644 min Scan# 1772  
 Delta R.T. -0.011 min  
 Lab File: BM039794.D  
 Acq: 02 May 2023 01:15

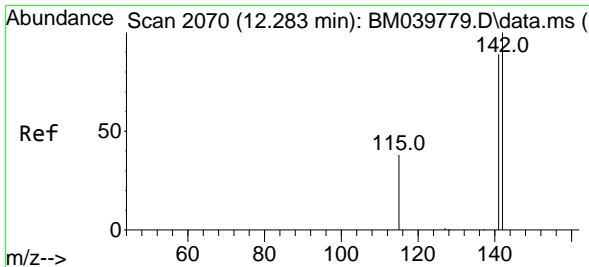
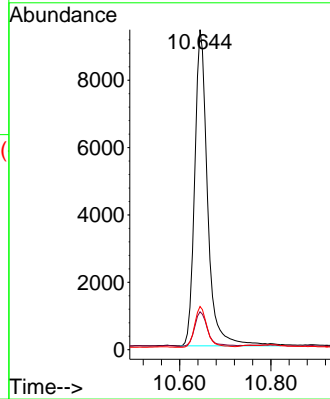
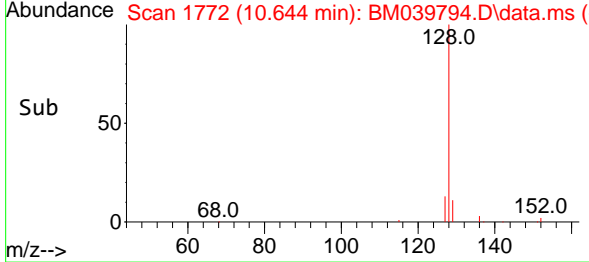
Instrument :  
 BNA\_M  
 ClientSampleId :  
 EW8Y1DL



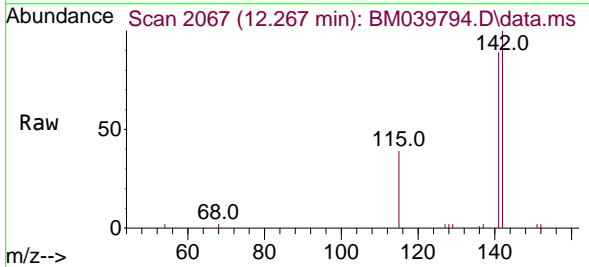
Tgt Ion:128 Resp: 18424  
 Ion Ratio Lower Upper  
 128 100  
 129 11.9 9.8 14.6  
 127 13.5 11.1 16.7

Manual Integrations  
 APPROVED

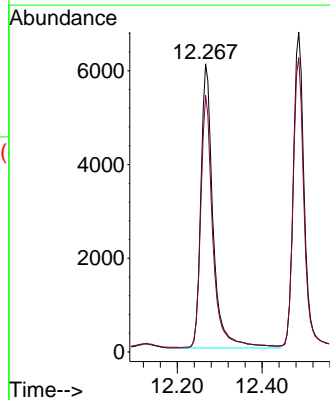
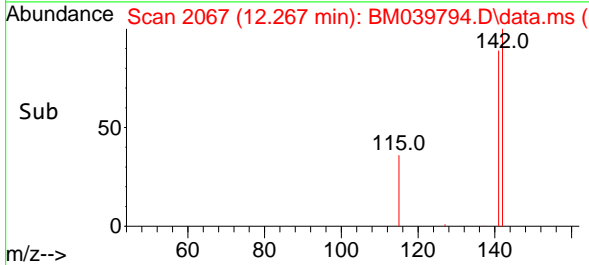
Reviewed By :Christian Giraldo 05/02/2023  
 Supervised By :Jagrut Upadhyay 05/02/2023

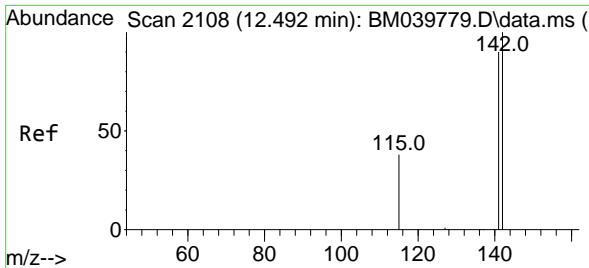


#7  
 2-Methylnaphthalene  
 Concen: 0.545 ng/uI  
 RT: 12.267 min Scan# 2067  
 Delta R.T. -0.011 min  
 Lab File: BM039794.D  
 Acq: 02 May 2023 01:15



Tgt Ion:142 Resp: 12109  
 Ion Ratio Lower Upper  
 142 100  
 141 87.7 73.2 109.8





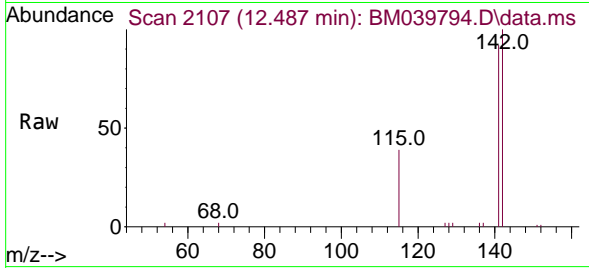
#8  
 1-Methylnaphthalene  
 Concen: 0.492 ng/u1  
 RT: 12.487 min Scan# 2107  
 Delta R.T. -0.005 min  
 Lab File: BM039794.D  
 Acq: 02 May 2023 01:15

Instrument :

BNA\_M

ClientSampleId :

EW8Y1DL

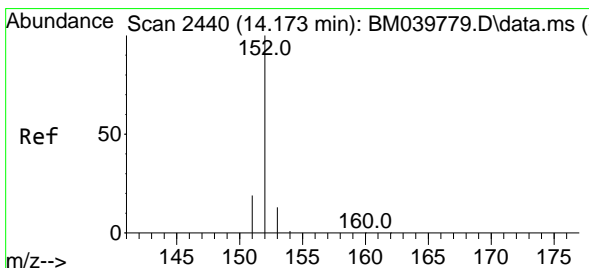
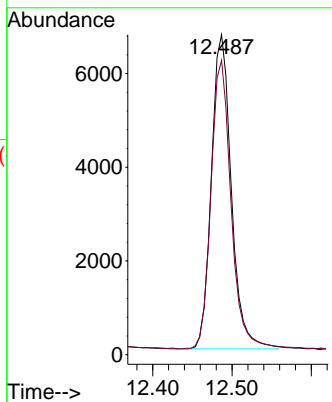
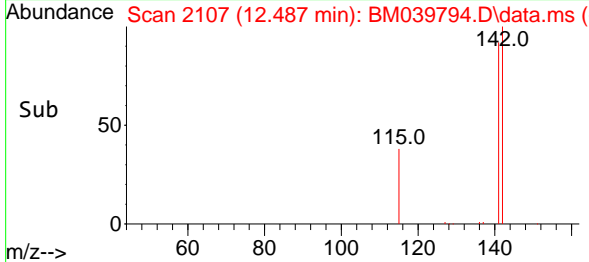


Tgt Ion:142 Resp: 11710  
 Ion Ratio Lower Upper  
 142 100  
 141 92.0 73.4 110.2

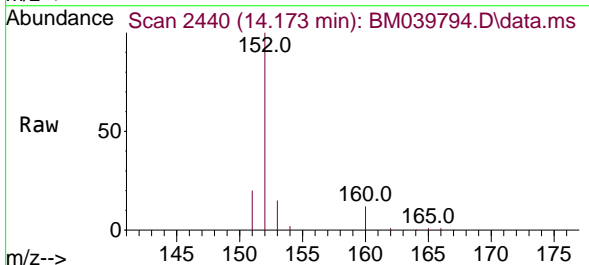
Manual Integrations

APPROVED

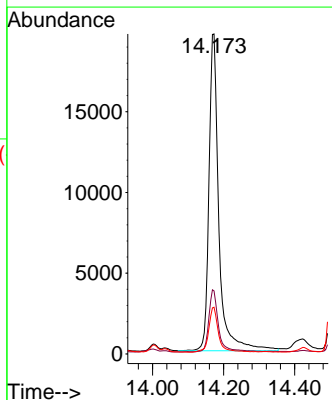
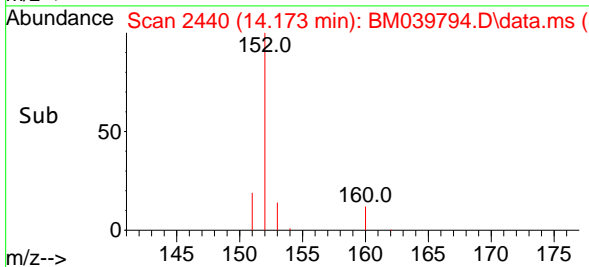
Reviewed By :Christian Giraldo 05/02/2023  
 Supervised By :Jagrut Upadhyay 05/02/2023

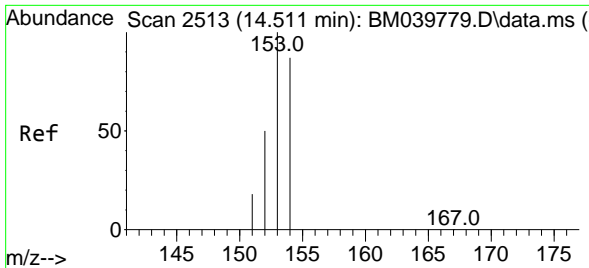


#10  
 Acenaphthylene  
 Concen: 1.067 ng/u1  
 RT: 14.173 min Scan# 2440  
 Delta R.T. 0.000 min  
 Lab File: BM039794.D  
 Acq: 02 May 2023 01:15



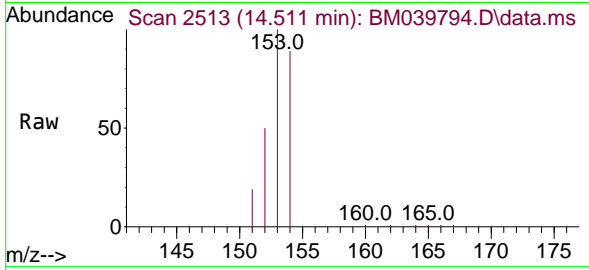
Tgt Ion:152 Resp: 38169  
 Ion Ratio Lower Upper  
 152 100  
 151 19.7 16.0 24.0  
 153 14.6 11.2 16.8





#11  
 Acenaphthene  
 Concen: 0.780 ng/u1  
 RT: 14.511 min Scan# 2513  
 Delta R.T. 0.000 min  
 Lab File: BM039794.D  
 Acq: 02 May 2023 01:15

Instrument : BNA\_M  
 Client Sample Id : EW8Y1DL

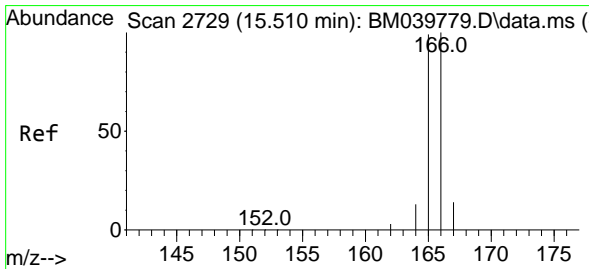
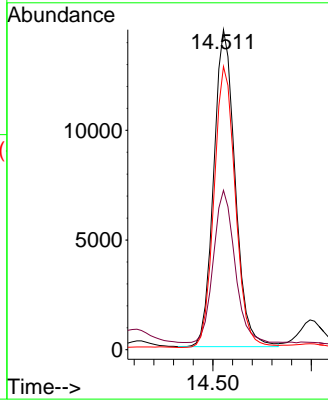
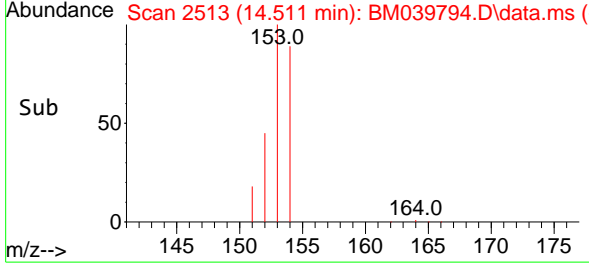


Tgt Ion: 153 Resp: 21920

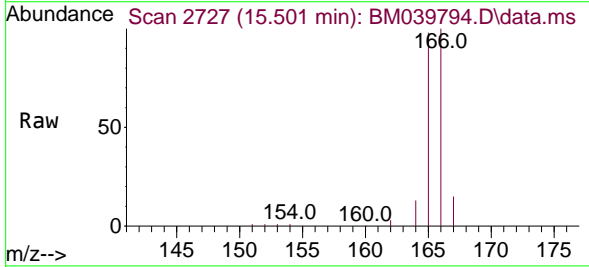
Ion	Ratio	Lower	Upper
153	100		
152	49.8	40.6	61.0
154	88.5	71.9	107.9

Manual Integrations  
 APPROVED

Reviewed By : Christian Giraldo 05/02/2023  
 Supervised By : Jagrut Upadhyay 05/02/2023

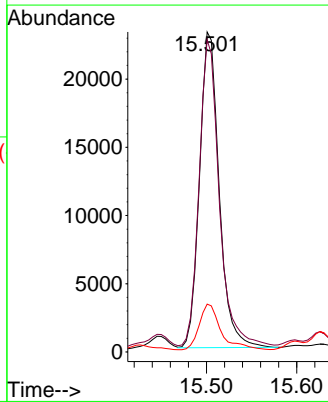
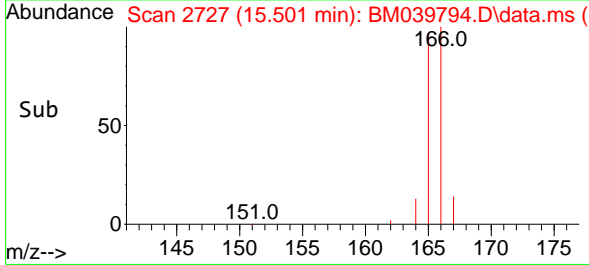


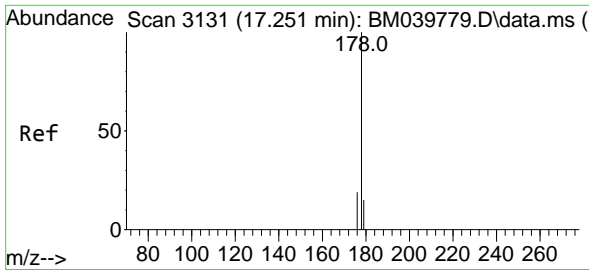
#12  
 Fluorene  
 Concen: 1.125 ng/u1  
 RT: 15.501 min Scan# 2727  
 Delta R.T. -0.009 min  
 Lab File: BM039794.D  
 Acq: 02 May 2023 01:15



Tgt Ion: 166 Resp: 35068

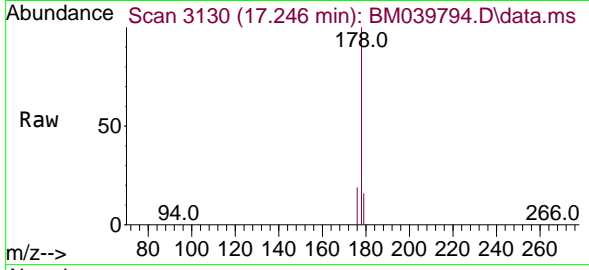
Ion	Ratio	Lower	Upper
166	100		
165	97.5	79.0	118.6
167	15.0	11.8	17.6





#15  
 Phenanthrene  
 Concen: 12.827 ng/u1  
 RT: 17.246 min Scan# 3131  
 Delta R.T. 0.000 min  
 Lab File: BM039794.D  
 Acq: 02 May 2023 01:15

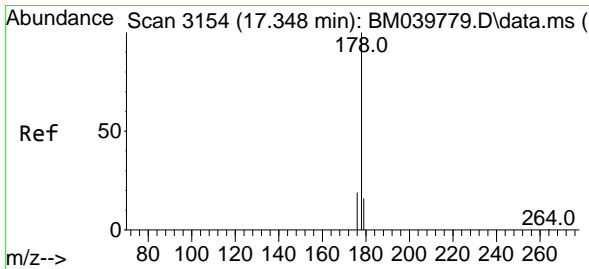
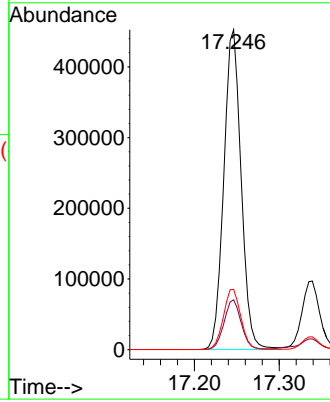
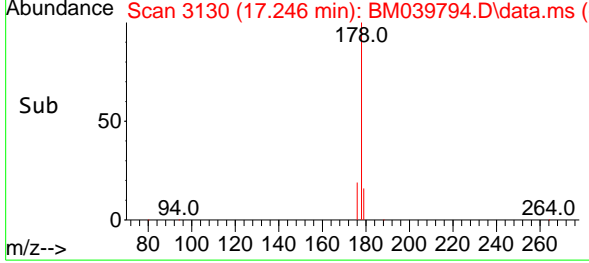
Instrument :  
 BNA\_M  
 ClientSampleId :  
 EW8Y1DL



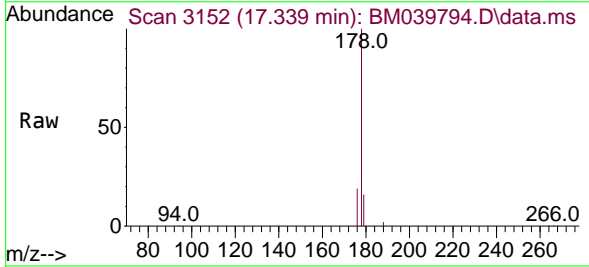
Tgt Ion:178 Resp: 641379  
 Ion Ratio Lower Upper  
 178 100  
 179 15.6 13.0 19.6  
 176 18.9 15.8 23.8

Manual Integrations  
 APPROVED

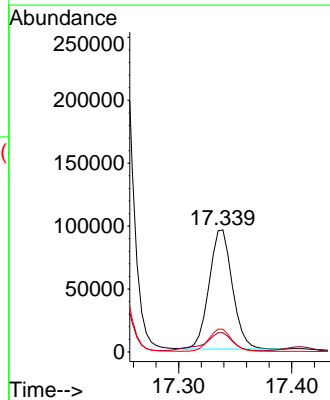
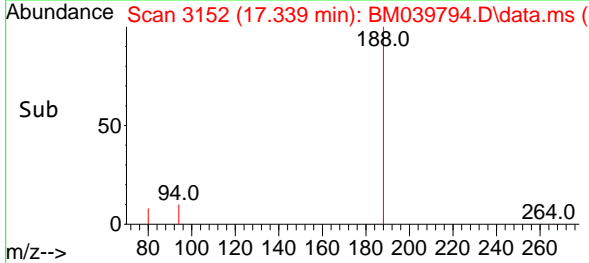
Reviewed By :Christian Giraldo 05/02/2023  
 Supervised By :Jagrut Upadhyay 05/02/2023

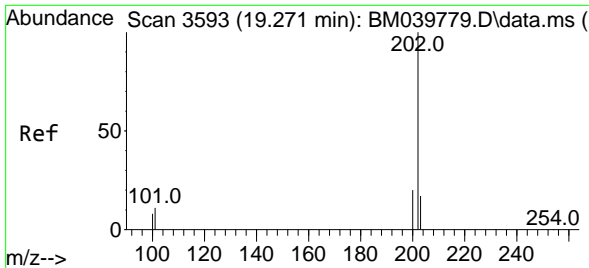


#16  
 Anthracene  
 Concen: 3.160 ng/u1  
 RT: 17.339 min Scan# 3152  
 Delta R.T. -0.004 min  
 Lab File: BM039794.D  
 Acq: 02 May 2023 01:15



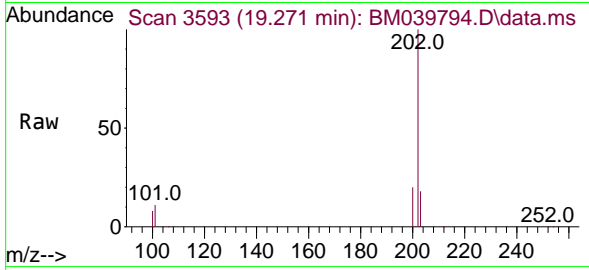
Tgt Ion:178 Resp: 135680  
 Ion Ratio Lower Upper  
 178 100  
 179 15.8 13.8 20.6  
 176 18.6 15.8 23.8





#19  
 Fluoranthene  
 Concen: 33.745 ng/u1  
 RT: 19.271 min Scan# 3593  
 Delta R.T. 0.005 min  
 Lab File: BM039794.D  
 Acq: 02 May 2023 01:15

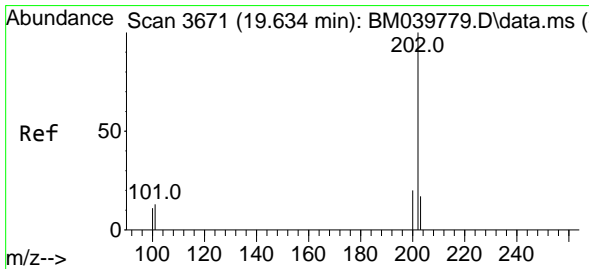
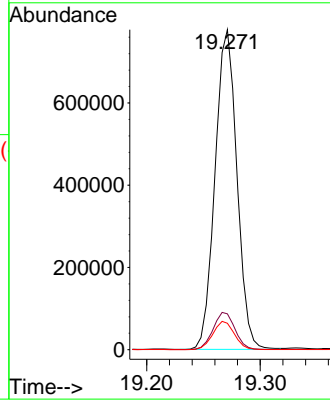
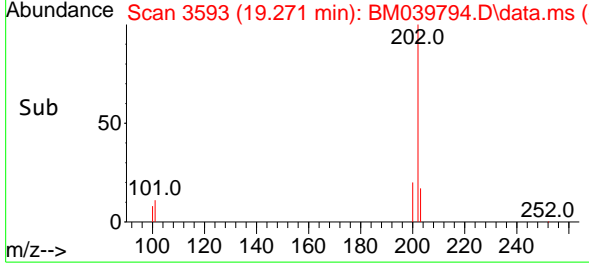
Instrument : BNA\_M  
 ClientSampleId : EW8Y1DL



Tgt Ion:202 Resp: 1040274  
 Ion Ratio Lower Upper  
 202 100  
 101 11.2 9.8 14.8  
 100 8.3 7.3 10.9

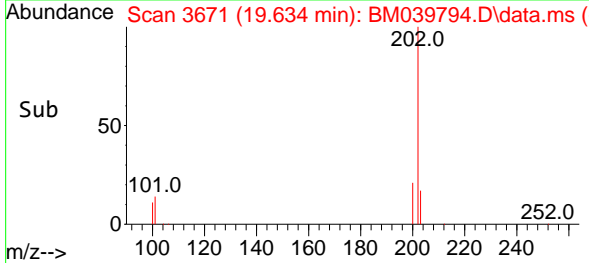
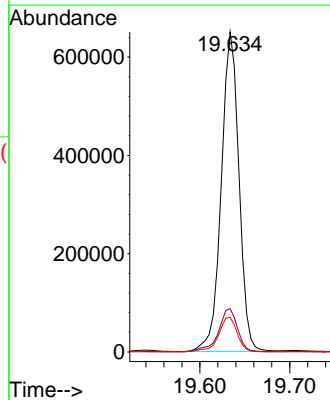
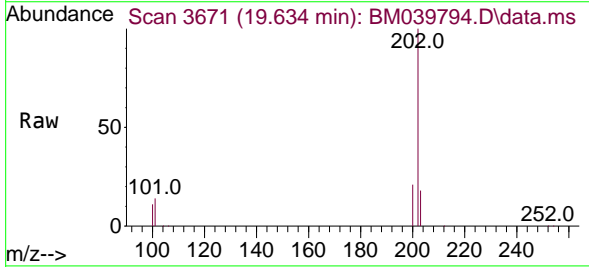
Manual Integrations  
**APPROVED**

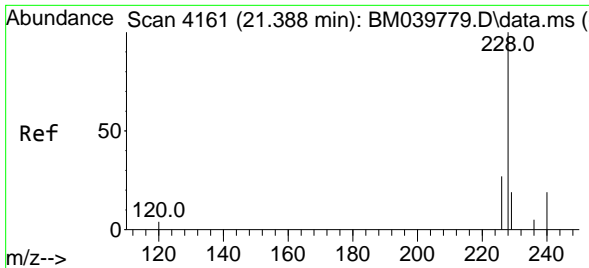
Reviewed By :Christian Giraldo 05/02/2023  
 Supervised By :Jagrut Upadhyay 05/02/2023



#20  
 Pyrene  
 Concen: 26.664 ng/u1  
 RT: 19.634 min Scan# 3671  
 Delta R.T. 0.000 min  
 Lab File: BM039794.D  
 Acq: 02 May 2023 01:15

Tgt Ion:202 Resp: 887666  
 Ion Ratio Lower Upper  
 202 100  
 101 13.6 10.9 16.3  
 100 10.8 8.9 13.3





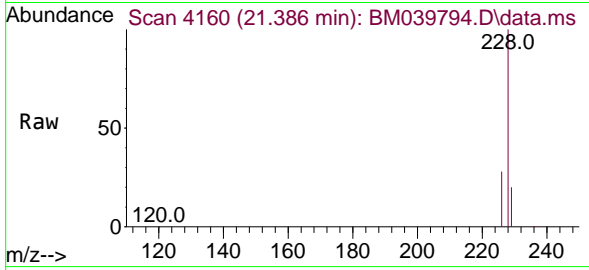
#21  
 Benzo(a)anthracene  
 Concen: 15.494 ng/u1  
 RT: 21.386 min Scan# 4160  
 Delta R.T. 0.003 min  
 Lab File: BM039794.D  
 Acq: 02 May 2023 01:15

Instrument :

BNA\_M

ClientSampleId :

EW8Y1DL

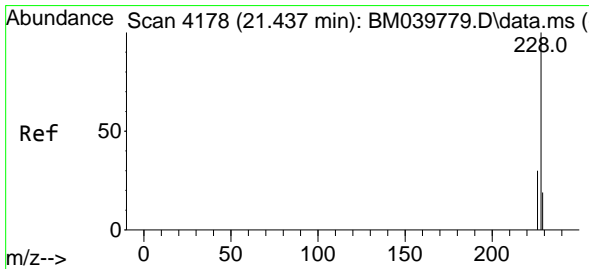
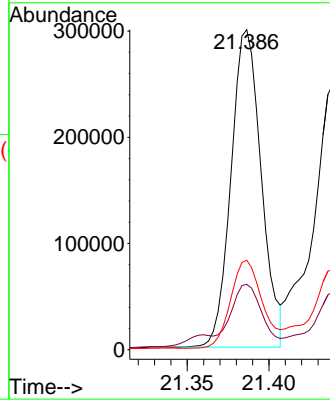
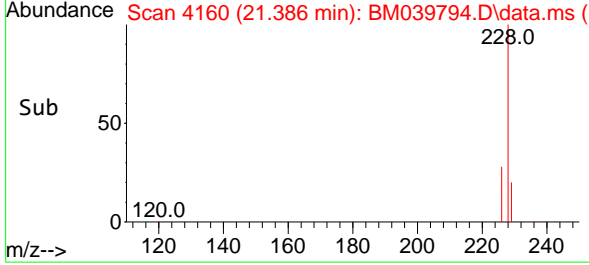


Tgt Ion:228 Resp: 38494  
 Ion Ratio Lower Upper  
 228 100  
 229 20.4 16.2 24.2  
 226 28.0 21.6 32.4

Manual Integrations

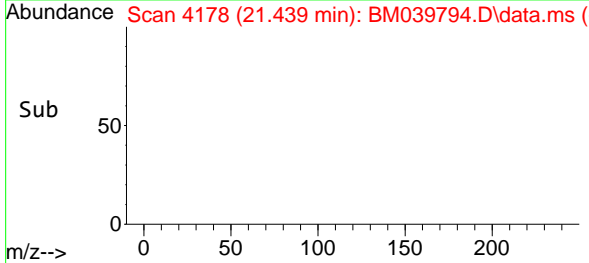
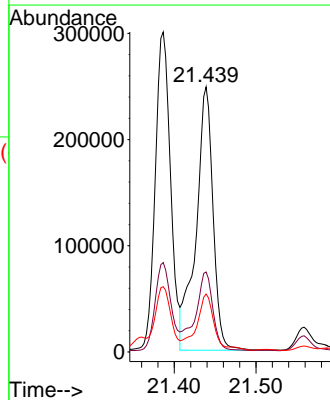
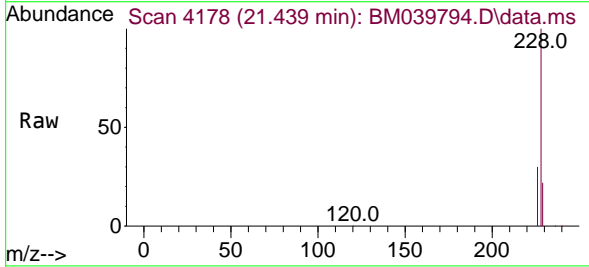
APPROVED

Reviewed By :Christian Giraldo 05/02/2023  
 Supervised By :Jagrut Upadhyay 05/02/2023

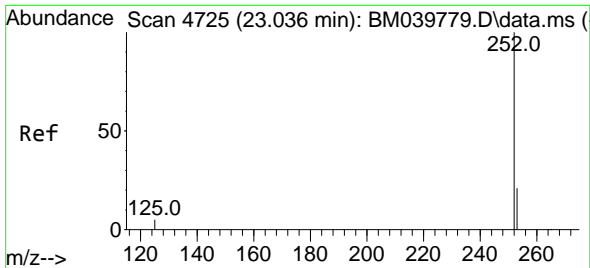


#22  
 Chrysene  
 Concen: 12.809 ng/u1  
 RT: 21.439 min Scan# 4178  
 Delta R.T. 0.003 min  
 Lab File: BM039794.D  
 Acq: 02 May 2023 01:15

Tgt Ion:228 Resp: 360143  
 Ion Ratio Lower Upper  
 228 100  
 226 30.2 24.3 36.5  
 229 21.9 15.9 23.9

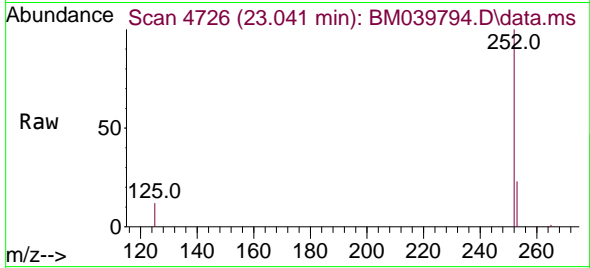






#24  
 Benzo(b)fluoranthene  
 Concen: 11.932 ng/ul m  
 RT: 23.041 min Scan# 4725  
 Delta R.T. 0.009 min  
 Lab File: BM039794.D  
 Acq: 02 May 2023 01:15

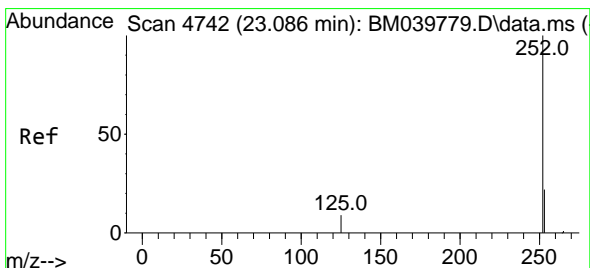
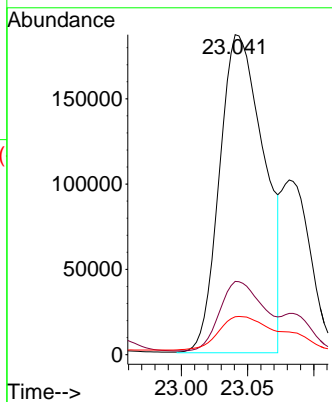
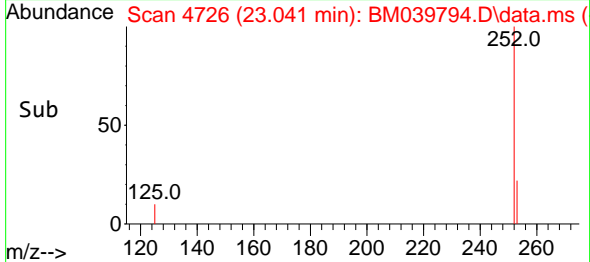
Instrument :  
 BNA\_M  
 ClientSampleId :  
 EW8Y1DL



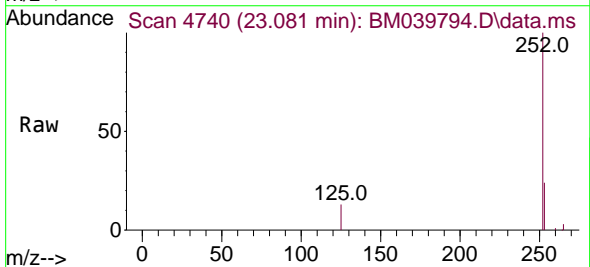
Tgt Ion:252 Resp: 434880  
 Ion Ratio Lower Upper  
 252 100  
 253 22.9 0.0 52.8  
 125 11.8 0.0 31.6

Manual Integrations  
 APPROVED

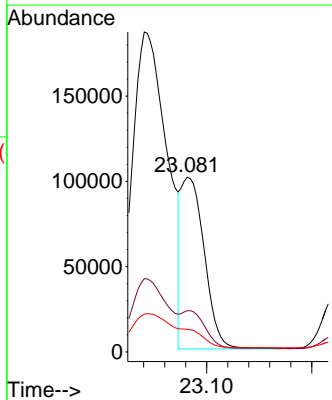
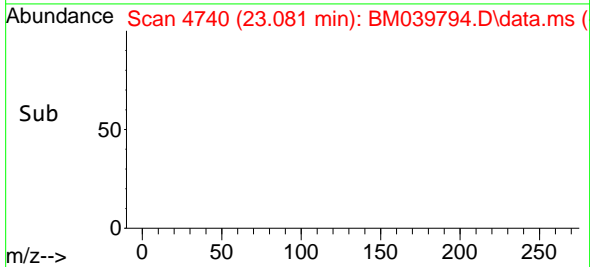
Reviewed By :Christian Giraldo 05/02/2023  
 Supervised By :Jagrut Upadhyay 05/02/2023

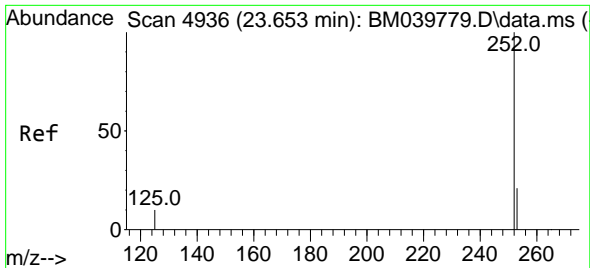


#25  
 Benzo(k)fluoranthene  
 Concen: 4.198 ng/ul m  
 RT: 23.081 min Scan# 4740  
 Delta R.T. 0.003 min  
 Lab File: BM039794.D  
 Acq: 02 May 2023 01:15



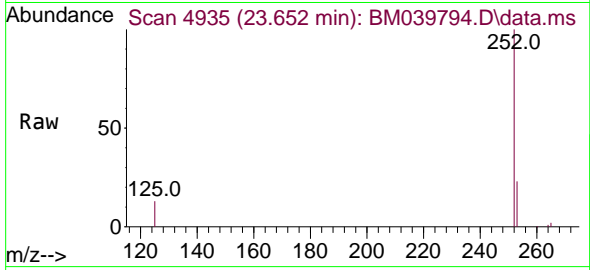
Tgt Ion:252 Resp: 155790  
 Ion Ratio Lower Upper  
 252 100  
 253 23.6 21.3 31.9  
 125 13.0 13.0 19.6#





#26  
 Benzo(a)pyrene  
 Concen: 9.413 ng/u1  
 RT: 23.652 min Scan# 4936  
 Delta R.T. 0.009 min  
 Lab File: BM039794.D  
 Acq: 02 May 2023 01:15

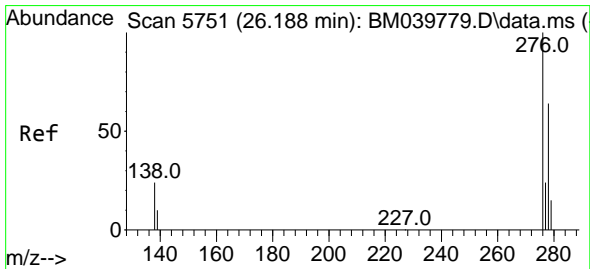
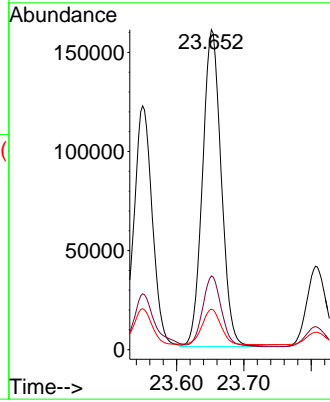
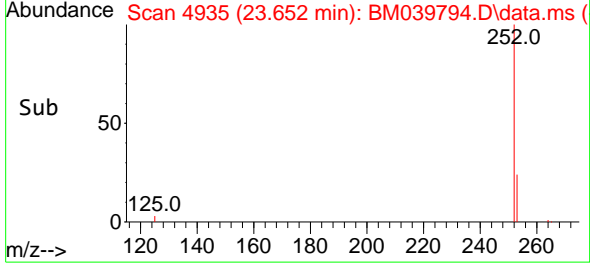
Instrument :  
 BNA\_M  
 ClientSampleId :  
 EW8Y1DL



Tgt Ion:252 Resp: 308024  
 Ion Ratio Lower Upper  
 252 100  
 253 23.1 24.7 37.1  
 125 12.7 16.5 24.7

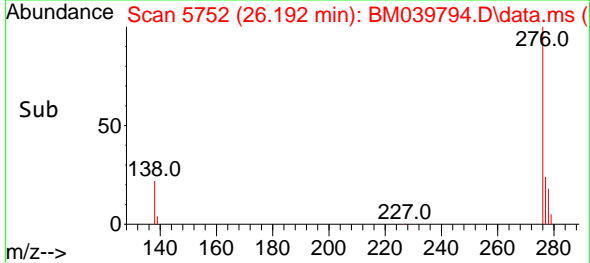
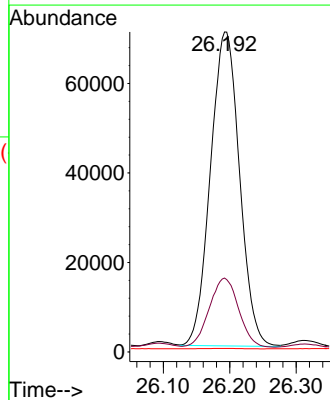
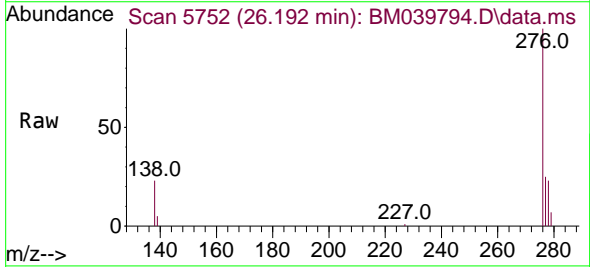
Manual Integrations  
 APPROVED

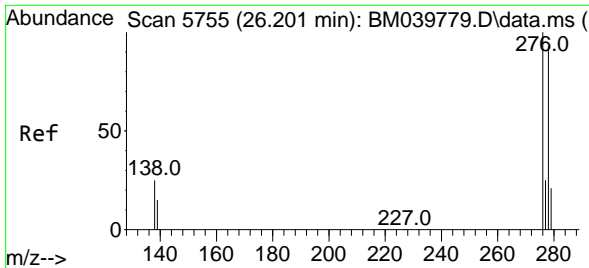
Reviewed By :Christian Giraldo 05/02/2023  
 Supervised By :Jagrut Upadhyay 05/02/2023



#27  
 Indeno(1,2,3-cd)pyrene  
 Concen: 5.151 ng/u1  
 RT: 26.192 min Scan# 5752  
 Delta R.T. 0.013 min  
 Lab File: BM039794.D  
 Acq: 02 May 2023 01:15

Tgt Ion:276 Resp: 213151  
 Ion Ratio Lower Upper  
 276 100  
 138 22.2 21.1 31.7  
 227 0.2 0.1 0.1





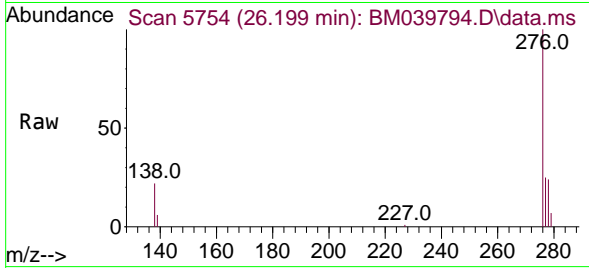
#28  
 Dibenzo(a,h)anthracene  
 Concen: 1.809 ng/ul  
 RT: 26.199 min Scan# 51  
 Delta R.T. 0.010 min  
 Lab File: BM039794.D  
 Acq: 02 May 2023 01:15

Instrument :

BNA\_M

ClientSampleId :

EW8Y1DL

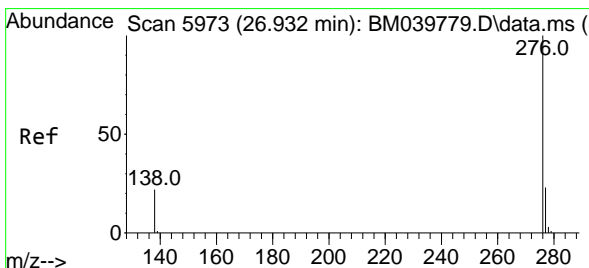
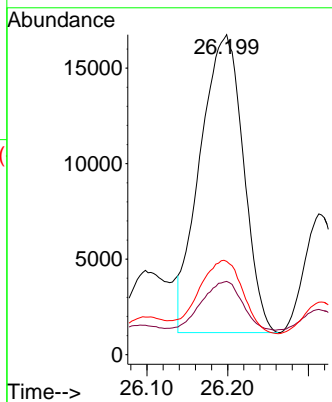
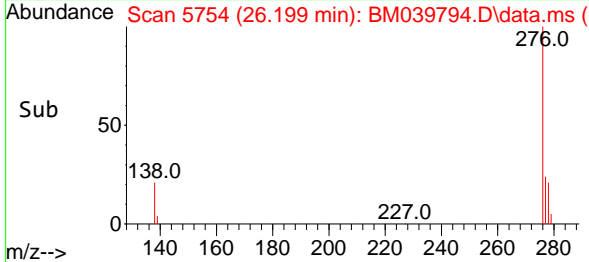


Tgt Ion:278 Resp: 5809  
 Ion Ratio Lower Upper  
 278 100  
 139 22.9 17.0 25.6  
 279 29.1 23.4 35.2

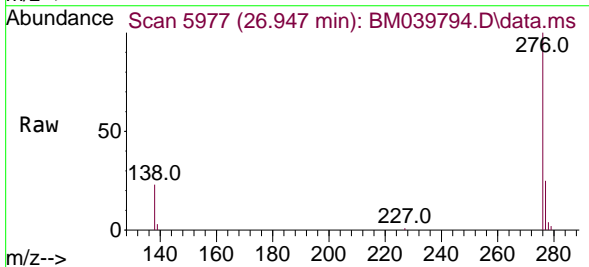
Manual Integrations

APPROVED

Reviewed By :Christian Giraldo 05/02/2023  
 Supervised By :Jagrut Upadhyay 05/02/2023



#29  
 Benzo(g,h,i)perylene  
 Concen: 5.422 ng/ul  
 RT: 26.947 min Scan# 5977  
 Delta R.T. 0.026 min  
 Lab File: BM039794.D  
 Acq: 02 May 2023 01:15



Tgt Ion:276 Resp: 195494  
 Ion Ratio Lower Upper  
 276 100  
 138 23.4 20.1 30.1  
 277 24.6 20.1 30.1

