

Data Path : Z:\svoasrv\HPCHEM1\BNA_M\Data\BM051822\
 Data File : BM035137.D
 Acq On : 18 May 2022 10:55
 Operator : CG/JU
 Sample : N2766-04
 Misc :
 ALS Vial : 4 Sample Multiplier: 1

Instrument :
 BNA_M
 ClientSampleId :
 EW4F4

Integration Parameters: LSCINT.P
 Integrator: RTE
 Smoothing : OFF Filtering: 5
 Sampling : 1 Min Area: 0.1 % of largest Peak
 Start Thrs: 0.2 Max Peaks: 100
 Stop Thrs : 0 Peak Location: TOP

If leading or trailing edge < 100 prefer < Baseline drop else tangent >
 Peak separation: 5

Method : Z:\svoasrv\HPCHEM1\BNA_M\Methods\SFAM-EPA-BM051722.M
 Title : SVOA CALIBRATION

Signal : TIC: BM035137.D\data.ms

peak #	R.T. min	first scan	max scan	last scan	PK TY	peak height	corr. area	corr. % max.	% of total
1	3.369	44	48	55	rVB	24958	39915	1.57%	0.129%
2	3.781	114	118	146	rVB	309400	631208	24.90%	2.033%
3	4.105	169	173	181	rVB2	11350	22331	0.88%	0.072%
4	5.022	325	329	336	rVB2	8519	14535	0.57%	0.047%
5	6.587	593	595	600	rVB5	2223	3024	0.12%	0.010%
6	6.910	646	650	652	rBV4	2231	2847	0.11%	0.009%
7	7.069	671	677	691	rBV	475011	772557	30.47%	2.488%
8	7.234	699	705	719	rBV	366896	600996	23.71%	1.935%
9	7.440	733	740	753	rVV	515001	839720	33.12%	2.704%
10	7.540	753	757	763	rVB5	7354	12708	0.50%	0.041%
11	7.904	813	819	829	rBV	564899	923538	36.43%	2.974%
12	7.981	829	832	836	rVB6	2180	2993	0.12%	0.010%
13	8.116	848	855	856	rBV6	1638	2870	0.11%	0.009%
14	8.610	932	939	957	rBV	603414	984175	38.82%	3.169%
15	9.063	1008	1016	1025	rBV	474292	790420	31.18%	2.545%
16	9.145	1027	1030	1035	rVV	9221	15148	0.60%	0.049%
17	9.181	1035	1036	1041	rVB5	3252	2677	0.11%	0.009%
18	9.234	1041	1045	1050	rBV6	3811	6140	0.24%	0.020%
19	9.787	1131	1139	1154	rBV	401324	668705	26.38%	2.153%
20	10.328	1223	1231	1241	rBV	558453	957537	37.77%	3.083%
21	10.704	1287	1295	1307	rVB	725304	1227611	48.42%	3.953%
22	10.839	1307	1318	1332	rBV	539375	956818	37.74%	3.081%
23	11.169	1370	1374	1379	rBV4	11248	19614	0.77%	0.063%
24	11.416	1413	1416	1420	rBV5	1991	3162	0.12%	0.010%
25	11.639	1448	1454	1458	rBV9	1900	4059	0.16%	0.013%
26	11.751	1467	1473	1477	rBV4	4044	6558	0.26%	0.021%
27	12.010	1513	1517	1521	rVB7	1634	2675	0.11%	0.009%
28	12.145	1535	1540	1546	rBV	13830	21545	0.85%	0.069%
29	12.298	1560	1566	1573	rVB	10086	18719	0.74%	0.060%
30	12.363	1573	1577	1581	rVB5	2285	3219	0.13%	0.010%
31	12.822	1652	1655	1658	rVV4	2584	3773	0.15%	0.012%
32	13.098	1696	1702	1708	rVB7	5773	11837	0.47%	0.038%
33	13.163	1708	1713	1718	rBV7	2322	4154	0.16%	0.013%
34	13.380	1745	1750	1757	rBV2	12939	20871	0.82%	0.067%
35	13.475	1763	1766	1770	rVB6	2467	3169	0.12%	0.010%
36	13.510	1770	1772	1778	rBV5	3355	4475	0.18%	0.014%

Data Path : Z:\svoasrv\HPCHEM1\BNA_M\Data\BM051822\
 Data File : BM035137.D
 Acq On : 18 May 2022 10:55
 Operator : CG/JU
 Sample : N2766-04
 Misc :
 ALS Vial : 4 Sample Multiplier: 1

Instrument :
 BNA_M
 ClientSampleId :
 EW4F4

Integration Parameters: LSCINT.P

Integrator: RTE
 Smoothing : OFF Filtering: 5
 Sampling : 1 Min Area: 0.1 % of largest Peak
 Start Thrs: 0.2 Max Peaks: 100
 Stop Thrs : 0 Peak Location: TOP

If leading or trailing edge < 100 prefer < Baseline drop else tangent >
 Peak separation: 5

Method : Z:\svoasrv\HPCHEM1\BNA_M\Methods\SFAM-EPA-BM051722.M
 Title : SVOA CALIBRATION

37	13.951	1839	1847	1857	rBV	1100474	1489314	58.74%	4.796%
38	14.039	1859	1862	1866	rVB3	7179	8840	0.35%	0.028%
39	14.163	1879	1883	1886	rVB3	3350	4140	0.16%	0.013%
40	14.233	1888	1895	1905	rVV	1183863	1702150	67.14%	5.481%
41	14.322	1905	1910	1911	rVB5	3445	3944	0.16%	0.013%
42	14.451	1928	1932	1937	rVB	15498	20319	0.80%	0.065%
43	14.539	1940	1947	1956	rBV	1066740	1517215	59.85%	4.886%
44	14.733	1972	1980	1995	rBV	278129	505217	19.93%	1.627%
45	14.957	2014	2018	2023	rBV7	6916	10781	0.43%	0.035%
46	15.069	2033	2037	2043	rVB7	4716	7707	0.30%	0.025%
47	15.245	2064	2067	2069	rBV3	4403	3830	0.15%	0.012%
48	15.404	2090	2094	2098	rVB2	13533	16299	0.64%	0.052%
49	15.533	2109	2116	2126	rBV	1519866	2165859	85.43%	6.974%
50	15.645	2129	2135	2149	rBV	348294	515397	20.33%	1.660%
51	15.768	2152	2156	2160	rVV	18405	27362	1.08%	0.088%
52	15.810	2160	2163	2169	rVB5	7718	12663	0.50%	0.041%
53	15.898	2175	2178	2181	rVB4	2655	3805	0.15%	0.012%
54	15.957	2186	2188	2195	rVV7	2558	4922	0.19%	0.016%
55	16.027	2195	2200	2204	rVB5	4225	7236	0.29%	0.023%
56	16.216	2230	2232	2236	rVB5	2548	3117	0.12%	0.010%
57	16.263	2236	2240	2242	rBV2	15492	19579	0.77%	0.063%
58	16.292	2242	2245	2247	rVV4	14644	18334	0.72%	0.059%
59	16.316	2247	2249	2256	rVB3	7821	11567	0.46%	0.037%
60	16.386	2256	2261	2262	rBV5	2609	4098	0.16%	0.013%
61	16.692	2310	2313	2317	rVB5	5991	6726	0.27%	0.022%
62	16.963	2355	2359	2360	rBV3	3453	3794	0.15%	0.012%
63	17.057	2368	2375	2379	rBV4	10661	17348	0.68%	0.056%
64	17.110	2381	2384	2391	rVB6	7667	10537	0.42%	0.034%
65	17.215	2399	2402	2404	rBV3	2709	2538	0.10%	0.008%
66	17.286	2404	2414	2422	rBV	1123168	1673844	66.02%	5.390%
67	17.380	2424	2430	2441	rVV2	1527006	2241447	88.41%	7.218%
68	17.480	2444	2447	2452	rVB6	12862	17279	0.68%	0.056%
69	17.527	2452	2455	2459	rBV5	2081	3046	0.12%	0.010%
70	17.721	2485	2488	2491	rBV5	2281	2570	0.10%	0.008%
71	17.798	2497	2501	2507	rVB5	9505	15243	0.60%	0.049%
72	17.962	2526	2529	2535	rVB4	10107	12797	0.50%	0.041%
73	18.004	2535	2536	2540	rBV3	2808	2844	0.11%	0.009%
74	18.057	2542	2545	2551	rVV6	5070	6564	0.26%	0.021%
75	18.186	2562	2567	2576	rBV	185702	281094	11.09%	0.905%
76	18.486	2615	2618	2621	rBV3	8948	10834	0.43%	0.035%

Data Path : Z:\svoasrv\HPCHEM1\BNA_M\Data\BM051822\
 Data File : BM035137.D
 Acq On : 18 May 2022 10:55
 Operator : CG/JU
 Sample : N2766-04
 Misc :
 ALS Vial : 4 Sample Multiplier: 1

Instrument :
 BNA_M
 ClientSampleId :
 EW4F4

Integration Parameters: LSCINT.P

Integrator: RTE
 Smoothing : OFF Filtering: 5
 Sampling : 1 Min Area: 0.1 % of largest Peak
 Start Thrs: 0.2 Max Peaks: 100
 Stop Thrs : 0 Peak Location: TOP

If leading or trailing edge < 100 prefer < Baseline drop else tangent >
 Peak separation: 5

Method : Z:\svoasrv\HPCHEM1\BNA_M\Methods\SFAM-EPA-BM051722.M
 Title : SVOA CALIBRATION

77	19.121	2722	2726	2728	rBV4	5973	8468	0.33%	0.027%
78	19.239	2742	2746	2750	rBV3	22138	32439	1.28%	0.104%
79	19.315	2755	2759	2762	rVV2	26934	38255	1.51%	0.123%
80	19.339	2762	2763	2768	rVB5	16844	18404	0.73%	0.059%
81	19.462	2780	2784	2793	rBV	125433	180696	7.13%	0.582%
82	19.674	2814	2820	2828	rBV	1909245	2535224	100.00%	8.164%
83	21.186	3073	3077	3083	rBV	131717	199362	7.86%	0.642%
84	21.468	3119	3125	3133	rBV	1338449	1797731	70.91%	5.789%
85	23.697	3497	3504	3512	rBV2	1272642	2462927	97.15%	7.931%
86	23.850	3523	3530	3544	rVB2	903693	1782352	70.30%	5.739%

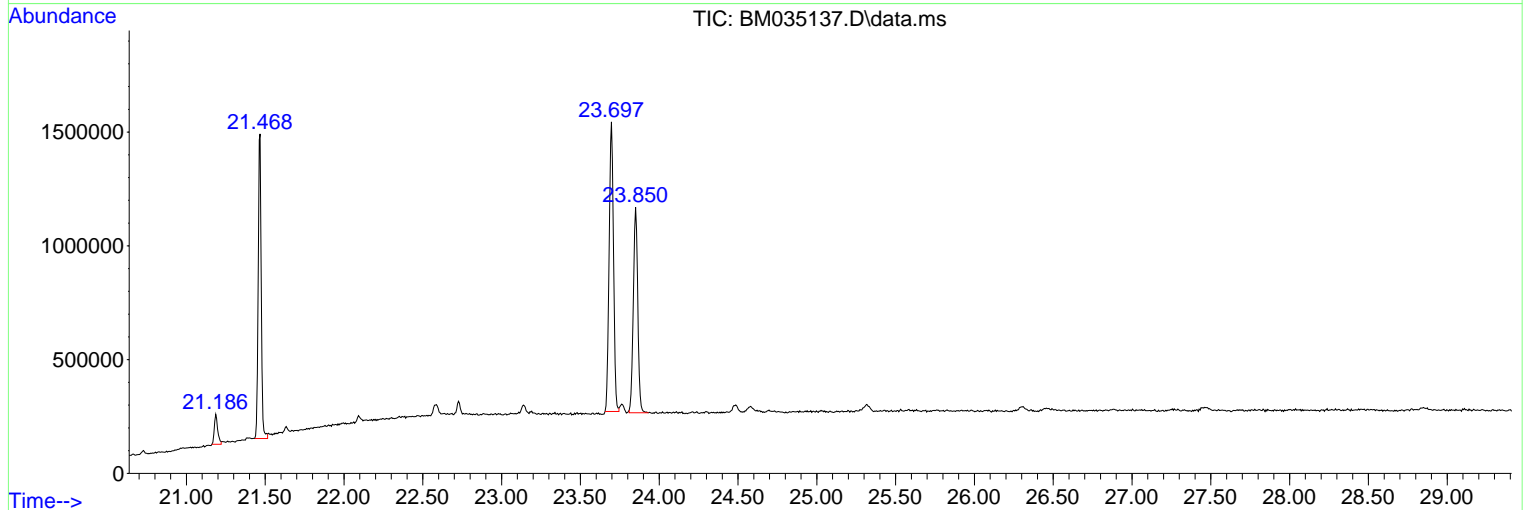
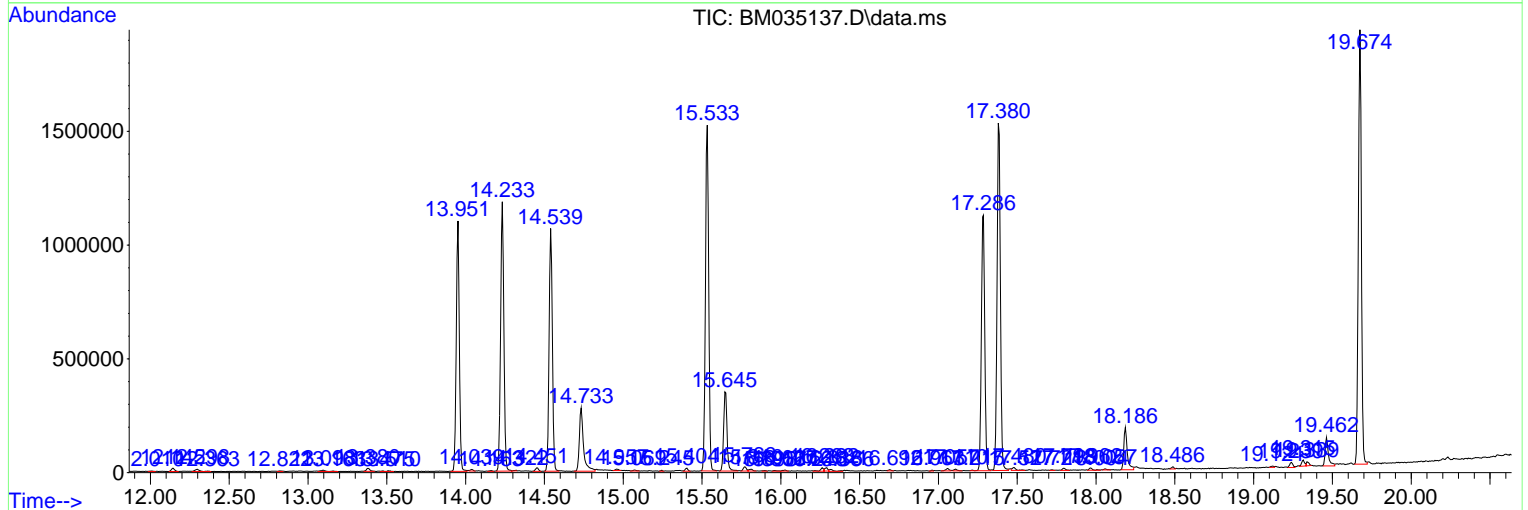
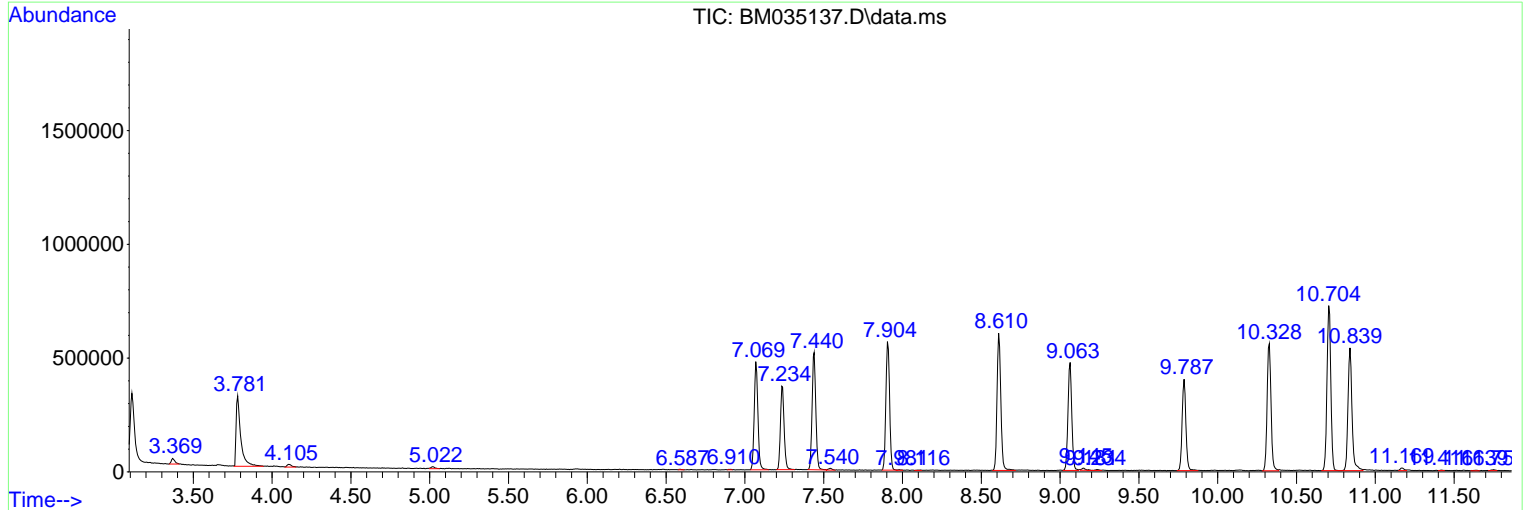
Sum of corrected areas: 31054361

Data Path : Z:\svoasrv\HPCHEM1\BNA_M\Data\BM051822\
 Data File : BM035137.D
 Acq On : 18 May 2022 10:55
 Operator : CG/JU
 Sample : N2766-04
 Misc :
 ALS Vial : 4 Sample Multiplier: 1

Instrument :
 BNA_M
ClientSampleId :
 EW4F4

Quant Method : Z:\svoasrv\HPCHEM1\BNA_M\Methods\SFAM-EPA-BM051722.M
 Quant Title : SVOA CALIBRATION

TIC Library : C:\Database\NIST20.L
 TIC Integration Parameters: LSCINT.P



Data Path : Z:\svoasrv\HPCHEM1\BNA_M\Data\BM051822\
 Data File : BM035137.D
 Acq On : 18 May 2022 10:55
 Operator : CG/JU
 Sample : N2766-04
 Misc :
 ALS Vial : 4 Sample Multiplier: 1

Instrument :
 BNA_M
 ClientSampleId :
 EW4F4

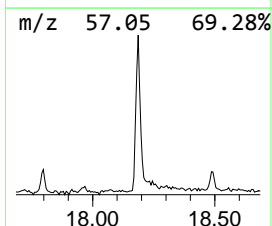
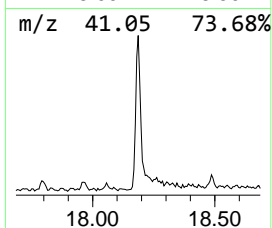
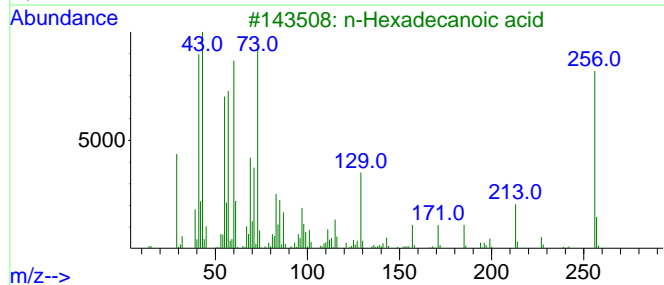
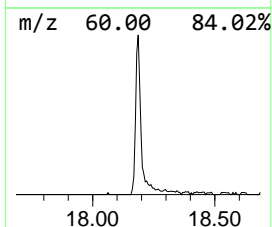
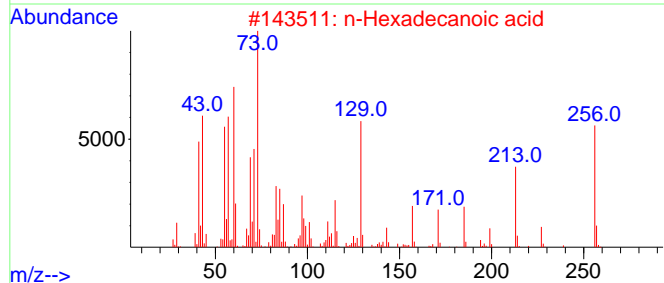
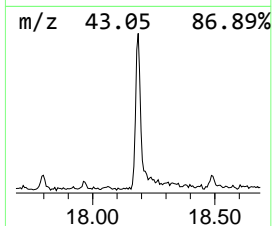
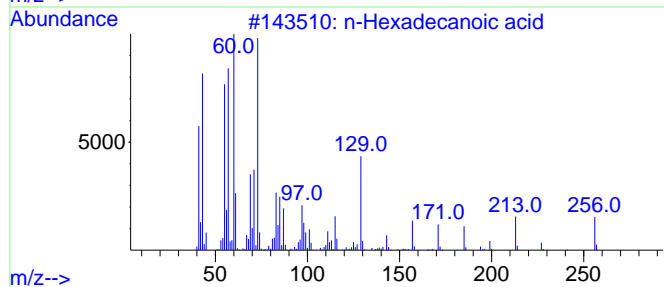
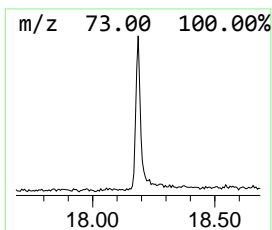
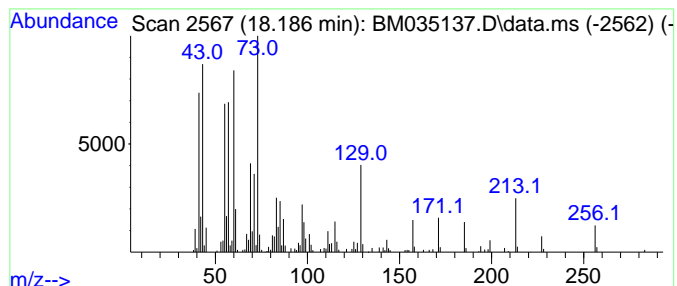
Quant Method : Z:\svoasrv\HPCHEM1\BNA_M\Methods\SFAM-EPA-BM051722.M
 Quant Title : SVOA CALIBRATION

TIC Library : C:\Database\NIST20.L
 TIC Integration Parameters: LSCINT.P

 Peak Number 1 n-Hexadecanoic acid Concentration Rank 1

R.T.	EstConc	Area	Relative to ISTD	R.T.
18.186	3.36 ng/ul	281094	Phenanthrene-d10	17.286

Hit#	of	5	Tentative ID	MW	MolForm	CAS#	Qual
1			n-Hexadecanoic acid	256	C16H32O2	000057-10-3	99
2			n-Hexadecanoic acid	256	C16H32O2	000057-10-3	99
3			n-Hexadecanoic acid	256	C16H32O2	000057-10-3	99
4			n-Hexadecanoic acid	256	C16H32O2	000057-10-3	98
5			Tetradecanoic acid	228	C14H28O2	000544-63-8	90



Data Path : Z:\svoasrv\HPCHEM1\BNA_M\Data\BM051822\
 Data File : BM035137.D
 Acq On : 18 May 2022 10:55
 Operator : CG/JU
 Sample : N2766-04
 Misc :
 ALS Vial : 4 Sample Multiplier: 1

Instrument :
 BNA_M
 ClientSampleId :
 EW4F4

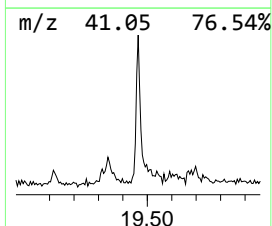
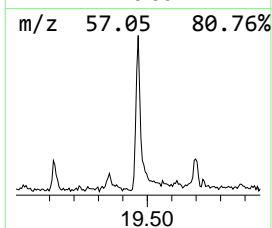
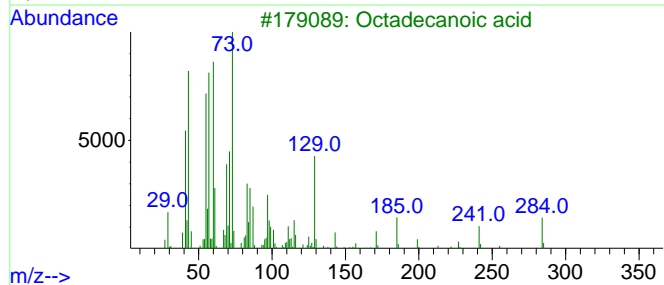
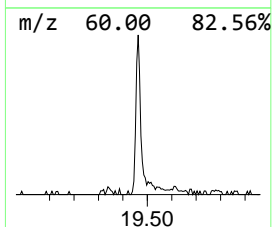
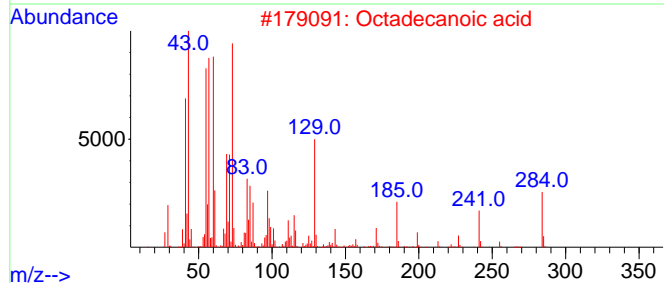
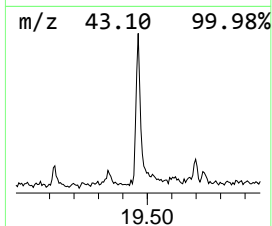
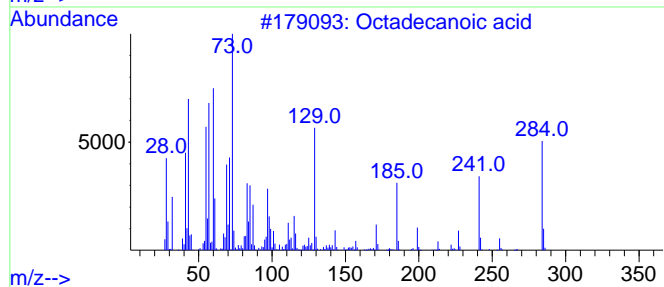
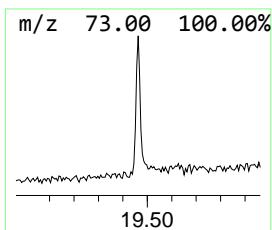
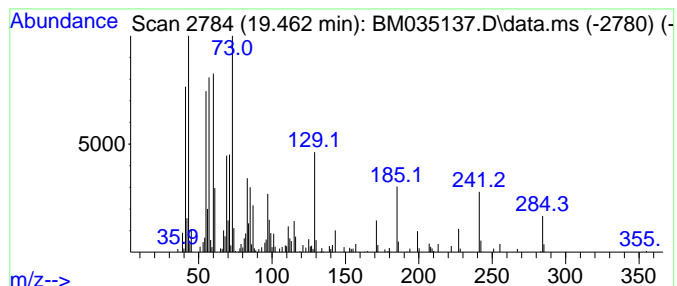
Quant Method : Z:\svoasrv\HPCHEM1\BNA_M\Methods\SFAM-EPA-BM051722.M
 Quant Title : SVOA CALIBRATION

TIC Library : C:\Database\NIST20.L
 TIC Integration Parameters: LSCINT.P

 Peak Number 2 Octadecanoic acid Concentration Rank 3

R.T.	EstConc	Area	Relative to ISTD	R.T.
19.462	2.01 ng/ul	180696	Chrysene-d12	21.468

Hit#	of	5	Tentative ID	MW	MolForm	CAS#	Qual
1			Octadecanoic acid	284	C18H36O2	000057-11-4	99
2			Octadecanoic acid	284	C18H36O2	000057-11-4	99
3			Octadecanoic acid	284	C18H36O2	000057-11-4	99
4			Octadecanoic acid	284	C18H36O2	000057-11-4	98
5			Octadecanoic acid	284	C18H36O2	000057-11-4	94



Data Path : Z:\svoasrv\HPCHEM1\BNA_M\Data\BM051822\
 Data File : BM035137.D
 Acq On : 18 May 2022 10:55
 Operator : CG/JU
 Sample : N2766-04
 Misc :
 ALS Vial : 4 Sample Multiplier: 1

Instrument :
 BNA_M
 ClientSampleId :
 EW4F4

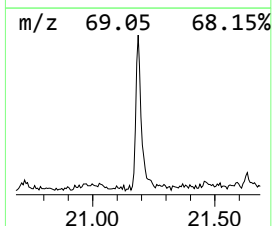
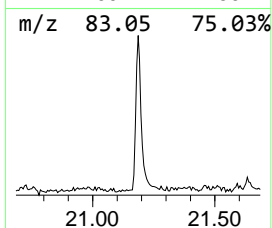
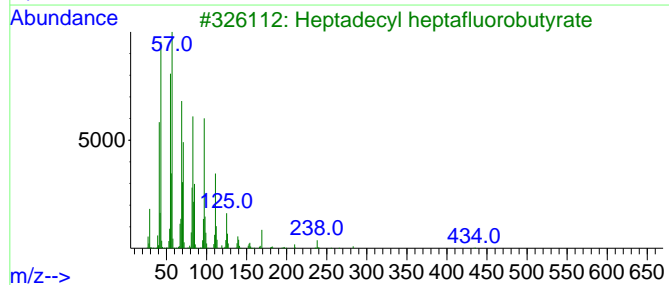
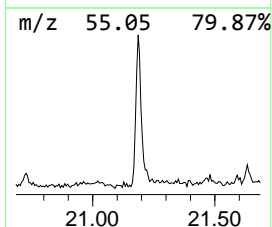
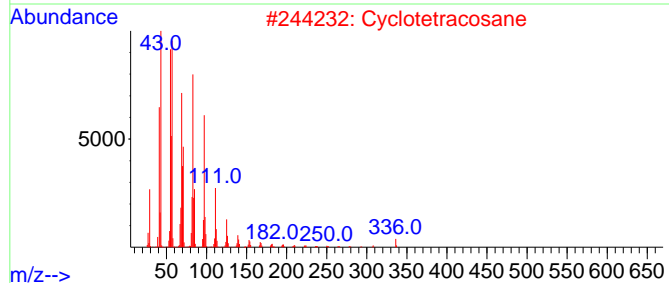
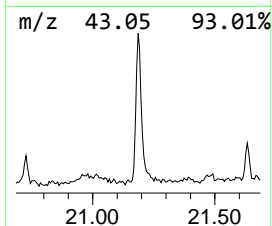
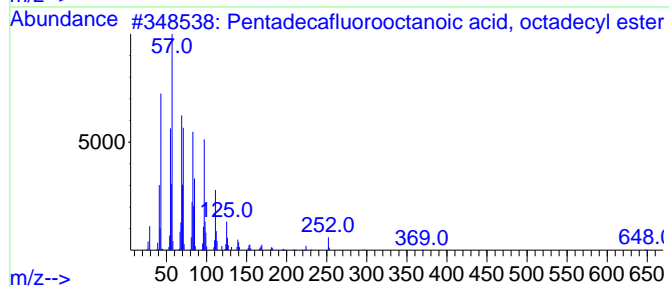
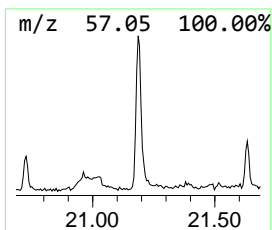
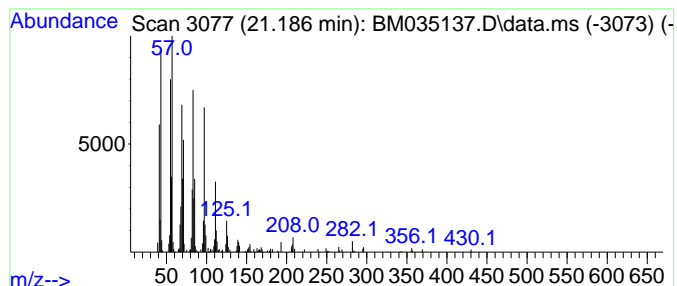
Quant Method : Z:\svoasrv\HPCHEM1\BNA_M\Methods\SFAM-EPA-BM051722.M
 Quant Title : SVOA CALIBRATION

TIC Library : C:\Database\NIST20.L
 TIC Integration Parameters: LSCINT.P

 Peak Number 3 Pentadecafluorooctanoic aci... Concentration Rank 2

R.T.	EstConc	Area	Relative to ISTD	R.T.
21.186	2.22 ng/ul	199362	Chrysene-d12	21.468

Hit#	of	5	Tentative ID	MW	MolForm	CAS#	Qual
1			Pentadecafluorooctanoic acid, oc...	666	C26H37F15O2	1000406-04-8	95
2			Cyclotetracosane	336	C24H48	000297-03-0	94
3			Heptadecyl heptafluorobutyrate	452	C21H35F7O2	959085-66-6	94
4			1-Hexacosene	364	C26H52	018835-33-1	94
5			Pentadecafluorooctanoic acid, pe...	624	C23H31F15O2	1000406-04-5	94



Data Path : Z:\svoasrv\HPCHEM1\BNA_M\Data\BM051822\
Data File : BM035137.D
Acq On : 18 May 2022 10:55
Operator : CG/JU
Sample : N2766-04
Misc :
ALS Vial : 4 Sample Multiplier: 1

Instrument :
BNA_M
ClientSampleId :
EW4F4

Quant Method : Z:\svoasrv\HPCHEM1\BNA_M\Methods\SFAM-EPA-BM051722.M
Quant Title : SVOA CALIBRATION

TIC Library : C:\Database\NIST20.L
TIC Integration Parameters: LSCINT.P

TIC Top Hit name	RT	EstConc	Units	Response	--Internal Standard--			
					#	RT	Resp	Conc
n-Hexadecanoic ...	18.186	3.4	ng/u1	281094	4	17.286	1673840	20.0
Octadecanoic acid	19.462	2.0	ng/u1	180696	5	21.468	1797730	20.0
Pentadecafluoro...	21.186	2.2	ng/u1	199362	5	21.468	1797730	20.0