

Data Path : Z:\svoasrv\HPCHEM1\BNA_M\Data\BM052522\
 Data File : BM035255.D
 Acq On : 25 May 2022 23:23
 Operator : CG/JU
 Sample : N2894-14
 Misc :
 ALS Vial : 13 Sample Multiplier: 1

Instrument :
 BNA_M
 ClientSampleId :
 P008-SS002-0006-01

Quant Time: May 26 04:56:42 2022
 Quant Method : Z:\svoasrv\HPCHEM1\BNA_M\Methods\8270-BM042722.M
 Quant Title : ASP BNA STANDARDS FOR 5 POINT CALIBRATION
 QLast Update : Fri May 20 04:53:59 2022
 Response via : Initial Calibration

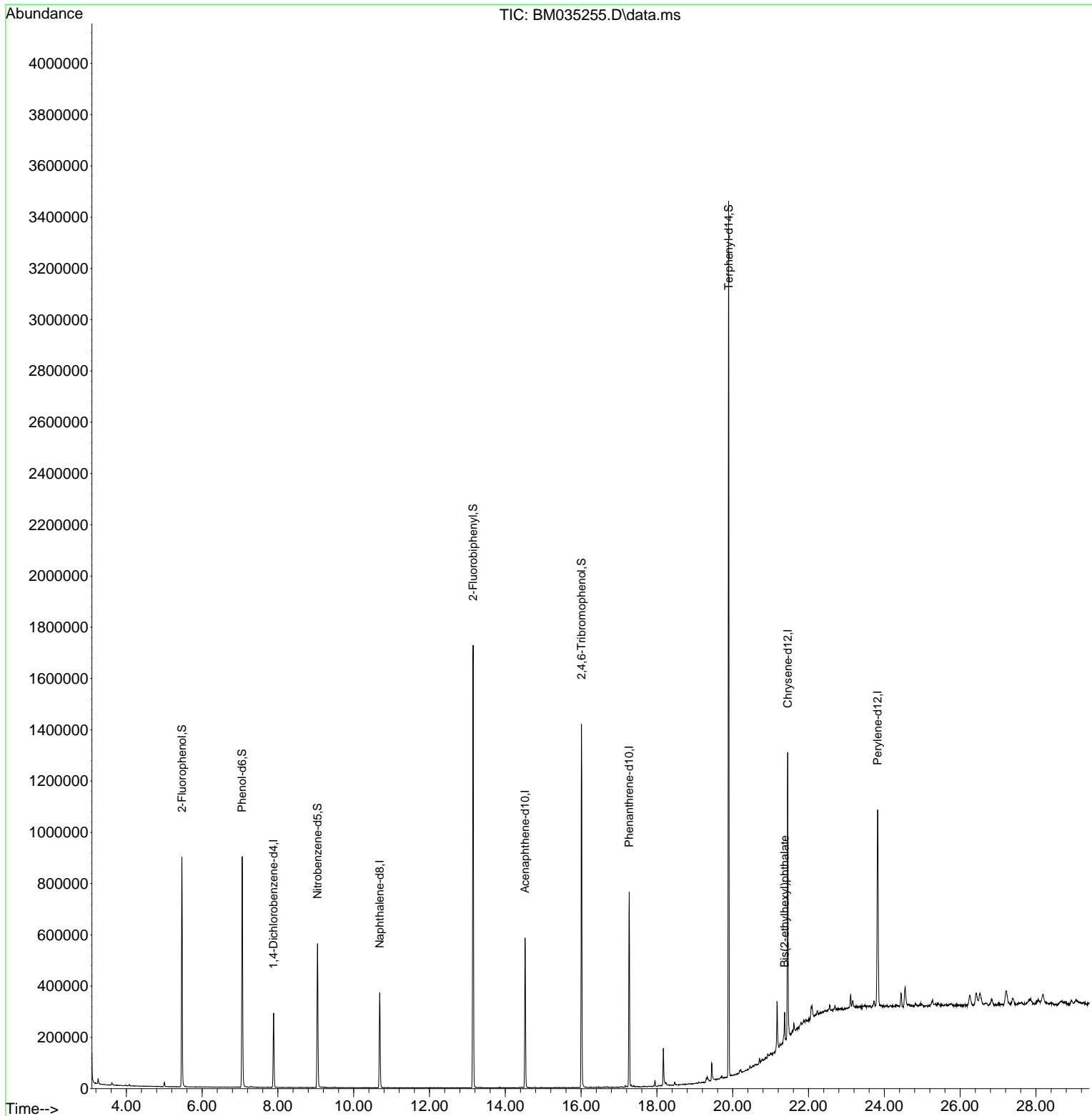
Compound	R.T.	QIon	Response	Conc	Units	Dev(Min)
Internal Standards						
1) 1,4-Dichlorobenzene-d4	7.887	152	85658	20.000	ng	-0.02
21) Naphthalene-d8	10.686	136	318757	20.000	ng	#-0.02
39) Acenaphthene-d10	14.522	164	209376	20.000	ng	-0.02
64) Phenanthrene-d10	17.268	188	480352	20.000	ng	#-0.02
76) Chrysene-d12	21.450	240	560594	20.000	ng	#-0.02
86) Perylene-d12	23.821	264	611353	20.000	ng	-0.04
System Monitoring Compounds						
5) 2-Fluorophenol	5.469	112	402407	82.880	ng	-0.01
7) Phenol-d6	7.057	99	518298	82.691	ng	-0.02
23) Nitrobenzene-d5	9.045	82	318834	54.015	ng	-0.02
42) 2,4,6-Tribromophenol	16.010	330	299728	131.599	ng	-0.02
45) 2-Fluorobiphenyl	13.151	172	928055	64.345	ng	-0.02
79) Terphenyl-d14	19.892	244	1694448	58.524	ng	-0.02
Target Compounds						
84) Bis(2-ethylhexyl)phtha...	21.368	149	57119	2.283	ng	# 98

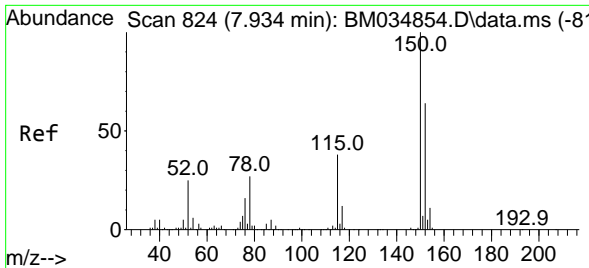
(#) = qualifier out of range (m) = manual integration (+) = signals summed

Data Path : Z:\svoasrv\HPCHEM1\BNA_M\Data\BM052522\
 Data File : BM035255.D
 Acq On : 25 May 2022 23:23
 Operator : CG/JU
 Sample : N2894-14
 Misc :
 ALS Vial : 13 Sample Multiplier: 1

Instrument :
 BNA_M
 ClientSampleId :
 P008-SS002-0006-01

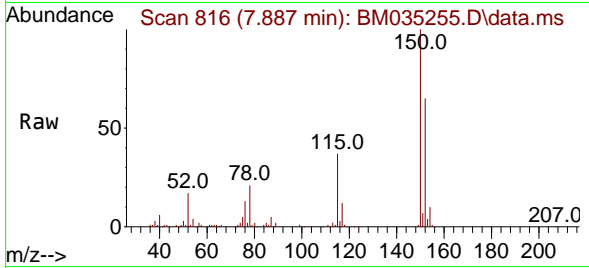
Quant Time: May 26 04:56:42 2022
 Quant Method : Z:\svoasrv\HPCHEM1\BNA_M\Methods\8270-BM042722.M
 Quant Title : ASP BNA STANDARDS FOR 5 POINT CALIBRATION
 QLast Update : Fri May 20 04:53:59 2022
 Response via : Initial Calibration



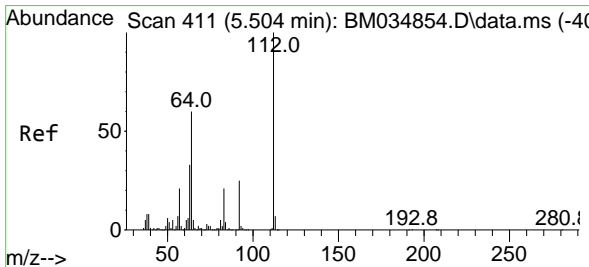
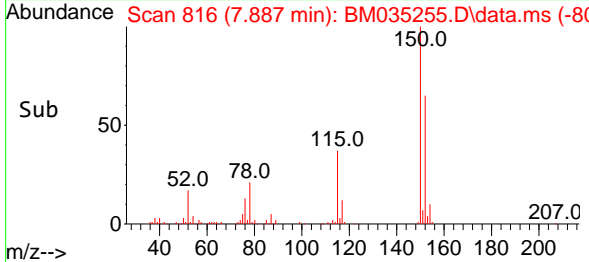
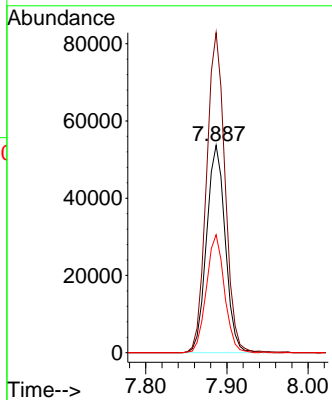


#1
 1,4-Dichlorobenzene-d4
 Concen: 20.000 ng
 RT: 7.887 min Scan# 81
 Delta R.T. -0.017 min
 Lab File: BM035255.D
 Acq: 25 May 2022 23:23

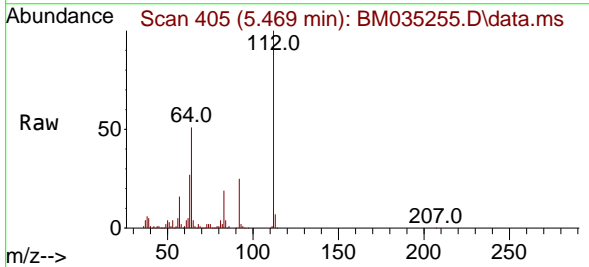
Instrument :
 BNA_M
 ClientSampleId :
 P008-SS002-0006-01



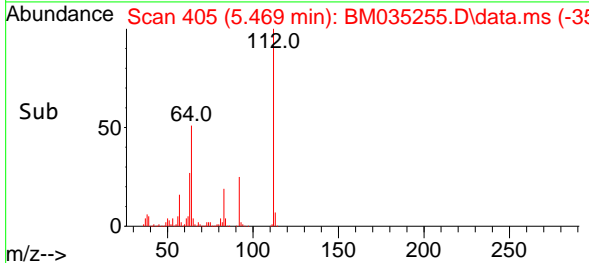
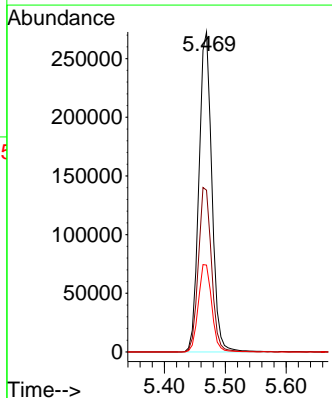
Tgt Ion:152 Resp: 85658
 Ion Ratio Lower Upper
 152 100
 150 154.4 124.9 187.3
 115 56.9 47.9 71.9

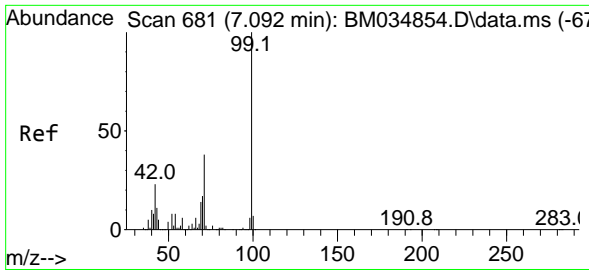


#5
 2-Fluorophenol
 Concen: 82.880 ng
 RT: 5.469 min Scan# 405
 Delta R.T. -0.012 min
 Lab File: BM035255.D
 Acq: 25 May 2022 23:23



Tgt Ion:112 Resp: 402407
 Ion Ratio Lower Upper
 112 100
 64 50.6 47.8 71.6
 63 27.2 26.6 40.0

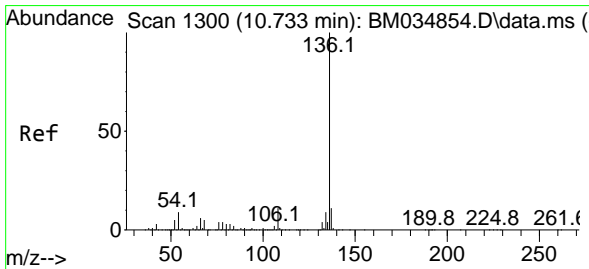
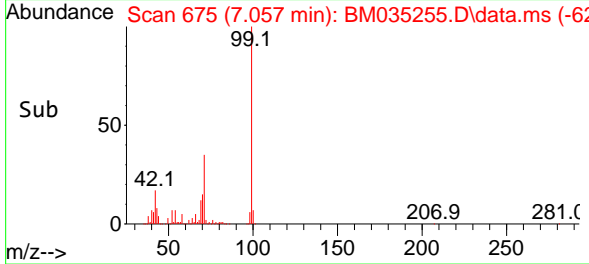
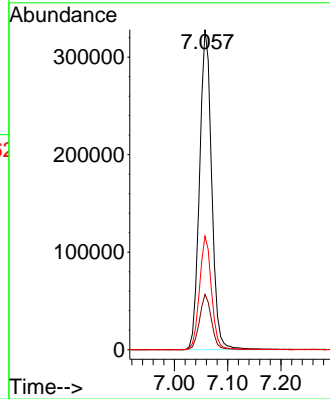
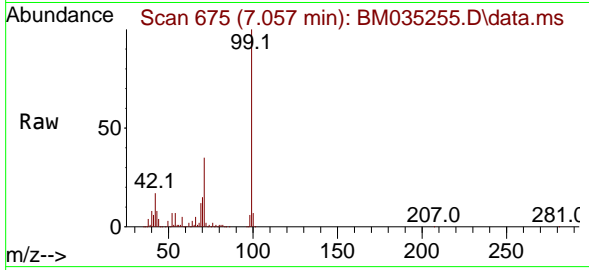




#7
 Phenol-d6
 Concen: 82.691 ng
 RT: 7.057 min Scan# 61
 Delta R.T. -0.018 min
 Lab File: BM035255.D
 Acq: 25 May 2022 23:23

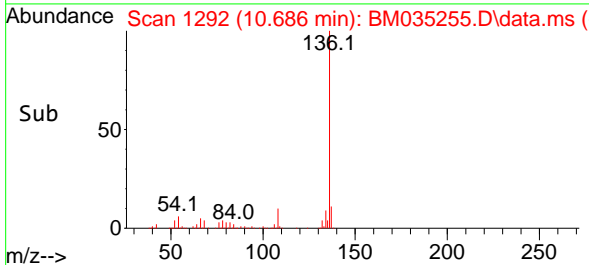
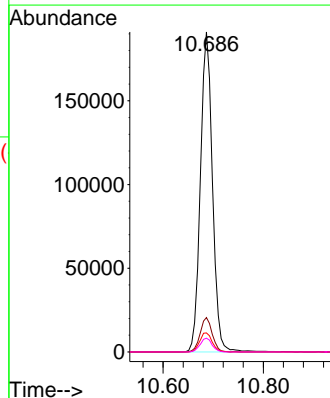
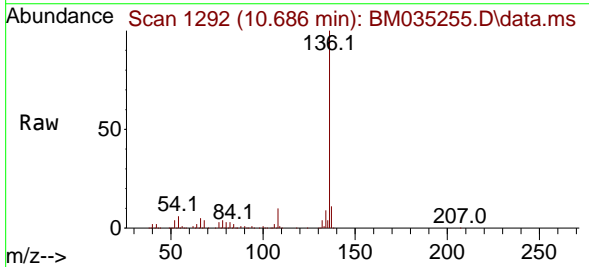
Instrument :
 BNA_M
 ClientSampleId :
 P008-SS002-0006-01

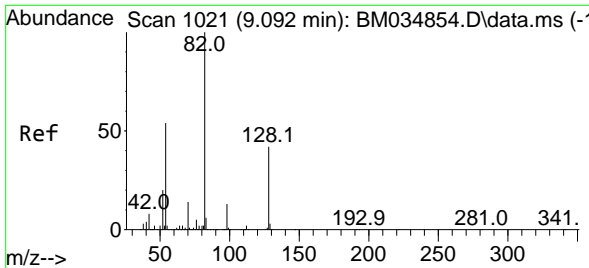
Tgt Ion: 99 Resp: 518298
 Ion Ratio Lower Upper
 99 100
 42 17.3 18.8 28.2#
 71 35.5 30.2 45.2



#21
 Naphthalene-d8
 Concen: 20.000 ng
 RT: 10.686 min Scan# 1292
 Delta R.T. -0.024 min
 Lab File: BM035255.D
 Acq: 25 May 2022 23:23

Tgt Ion:136 Resp: 318757
 Ion Ratio Lower Upper
 136 100
 137 10.8 8.9 13.3
 54 5.9 7.0 10.4#
 68 4.3 4.3 6.5#



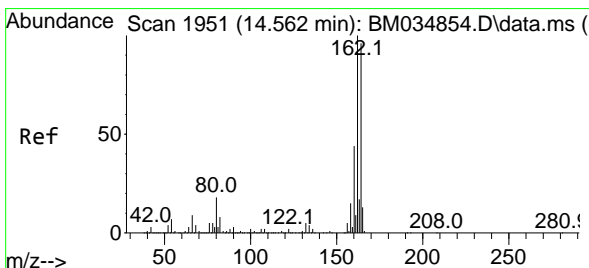
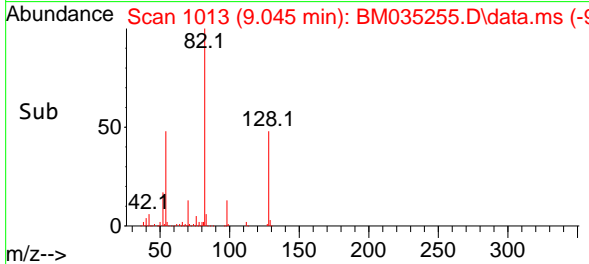
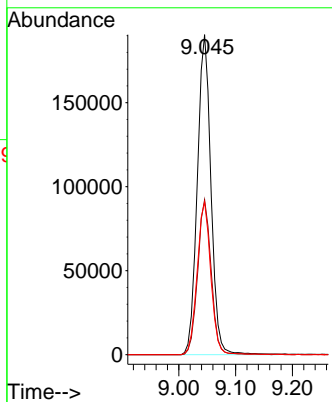
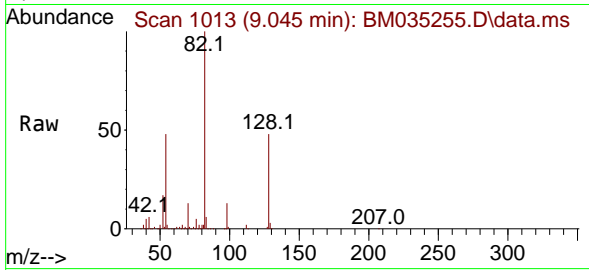


#23
 Nitrobenzene-d5
 Concen: 54.015 ng
 RT: 9.045 min Scan# 1013
 Delta R.T. -0.018 min
 Lab File: BM035255.D
 Acq: 25 May 2022 23:23

Instrument :
 BNA_M
 ClientSampleId :
 P008-SS002-0006-01

Tgt Ion: 82 Resp: 318834

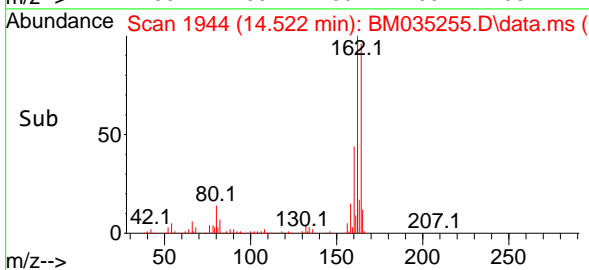
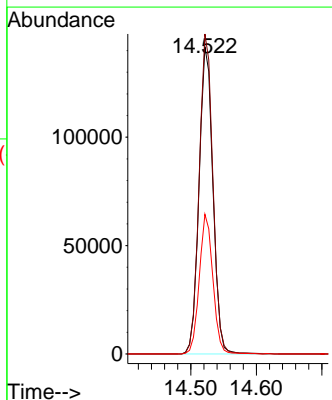
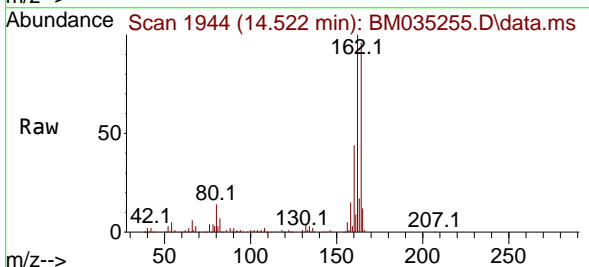
Ion	Ratio	Lower	Upper
82	100		
128	48.4	33.7	50.5
54	47.7	43.2	64.8

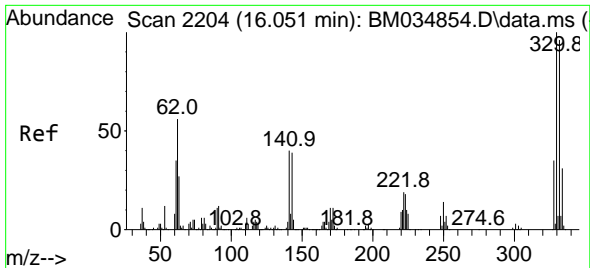


#39
 Acenaphthene-d10
 Concen: 20.000 ng
 RT: 14.522 min Scan# 1944
 Delta R.T. -0.024 min
 Lab File: BM035255.D
 Acq: 25 May 2022 23:23

Tgt Ion: 164 Resp: 209376

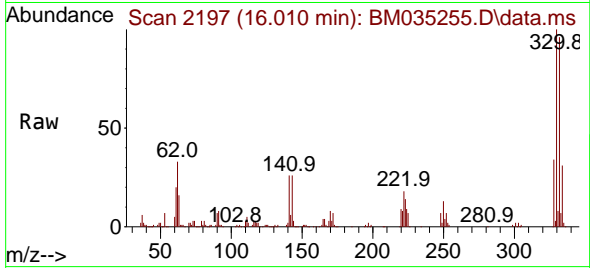
Ion	Ratio	Lower	Upper
164	100		
162	104.2	83.0	124.6
160	45.5	37.0	55.4



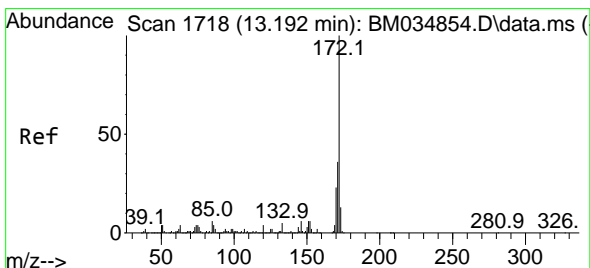
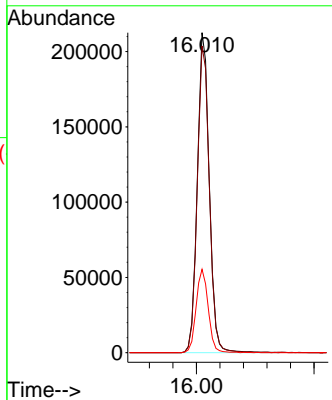
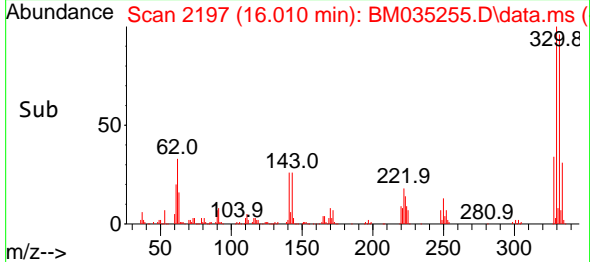


#42
 2,4,6-Tribromophenol
 Concen: 131.599 ng
 RT: 16.010 min Scan# 21
 Delta R.T. -0.024 min
 Lab File: BM035255.D
 Acq: 25 May 2022 23:23

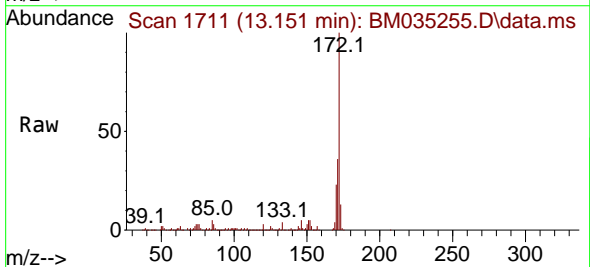
Instrument :
 BNA_M
 ClientSampleId :
 P008-SS002-0006-01



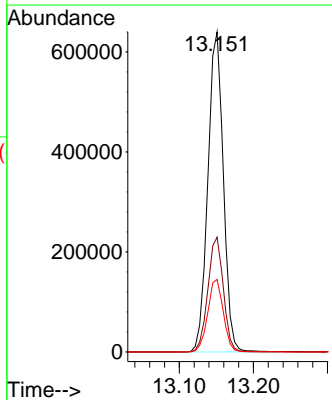
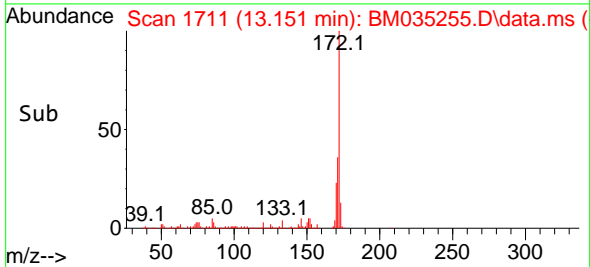
Tgt Ion:330 Resp: 299728
 Ion Ratio Lower Upper
 330 100
 332 96.9 77.0 115.4
 141 26.2 35.3 52.9#

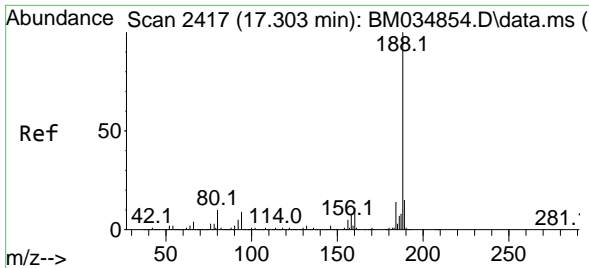


#45
 2-Fluorobiphenyl
 Concen: 64.345 ng
 RT: 13.151 min Scan# 1711
 Delta R.T. -0.018 min
 Lab File: BM035255.D
 Acq: 25 May 2022 23:23



Tgt Ion:172 Resp: 928055
 Ion Ratio Lower Upper
 172 100
 171 35.9 28.5 42.7
 170 22.6 18.7 28.1

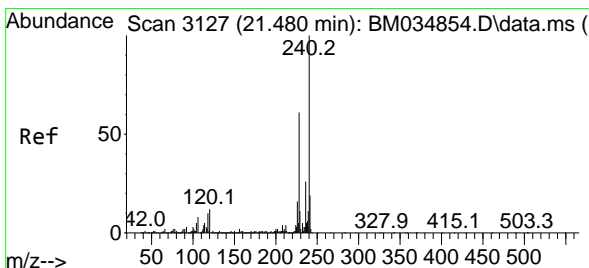
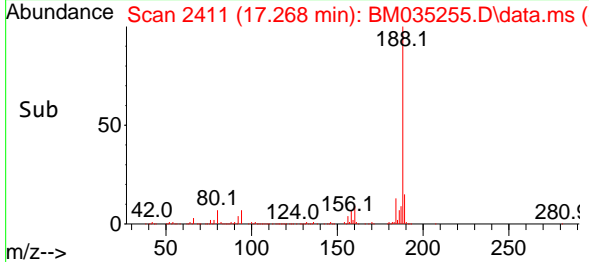
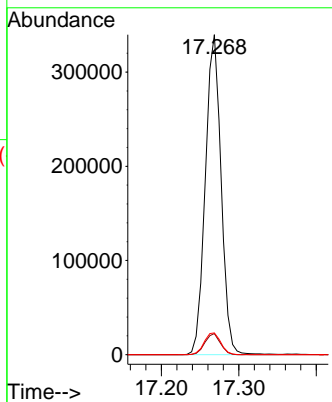
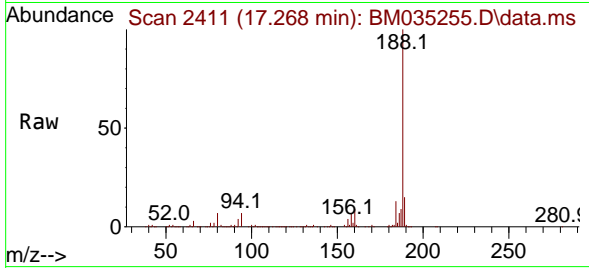




#64
 Phenanthrene-d10
 Concen: 20.000 ng
 RT: 17.268 min Scan# 2411
 Delta R.T. -0.018 min
 Lab File: BM035255.D
 Acq: 25 May 2022 23:23

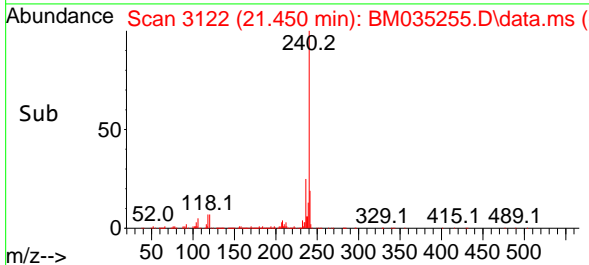
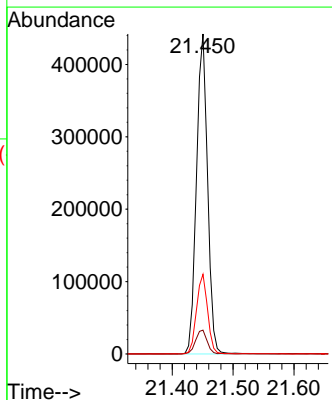
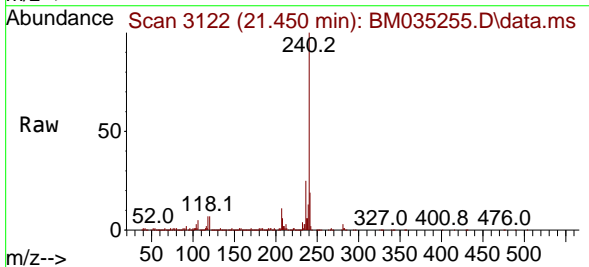
Instrument :
 BNA_M
 ClientSampleId :
 P008-SS002-0006-01

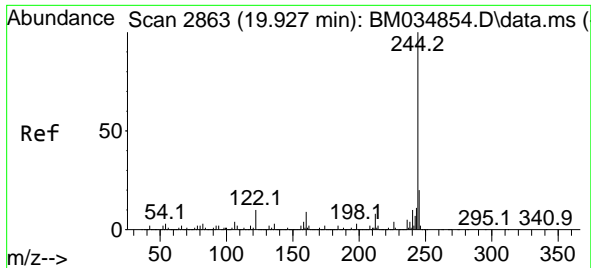
Tgt Ion:188 Resp: 480352
 Ion Ratio Lower Upper
 188 100
 94 6.6 7.0 10.4#
 80 6.8 7.6 11.4#



#76
 Chrysene-d12
 Concen: 20.000 ng
 RT: 21.450 min Scan# 3122
 Delta R.T. -0.024 min
 Lab File: BM035255.D
 Acq: 25 May 2022 23:23

Tgt Ion:240 Resp: 560594
 Ion Ratio Lower Upper
 240 100
 120 7.5 9.4 14.0#
 236 24.9 20.6 30.8

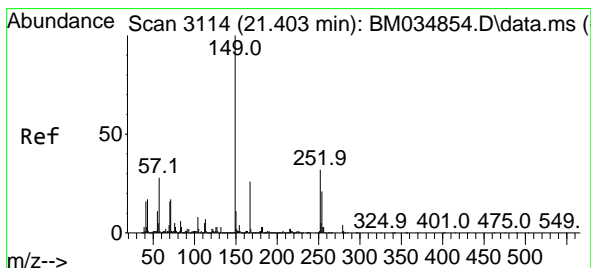
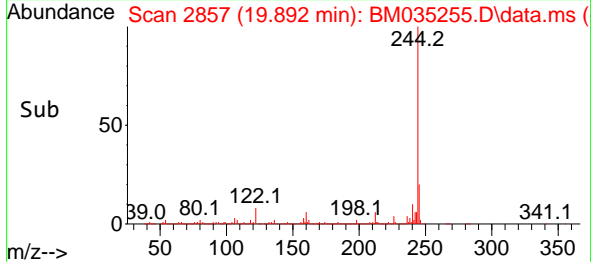
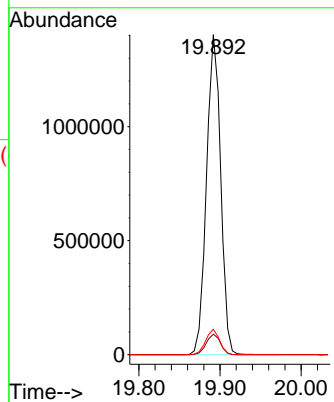
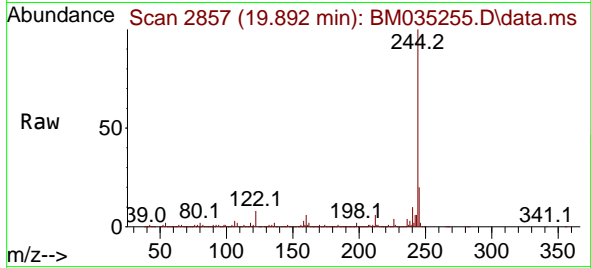




#79
 Terphenyl-d14
 Concen: 58.524 ng
 RT: 19.892 min Scan# 21
 Delta R.T. -0.024 min
 Lab File: BM035255.D
 Acq: 25 May 2022 23:23

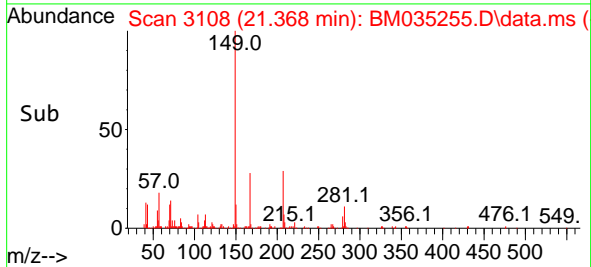
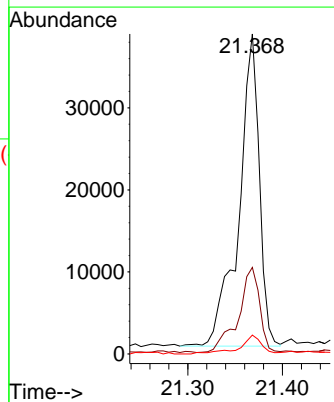
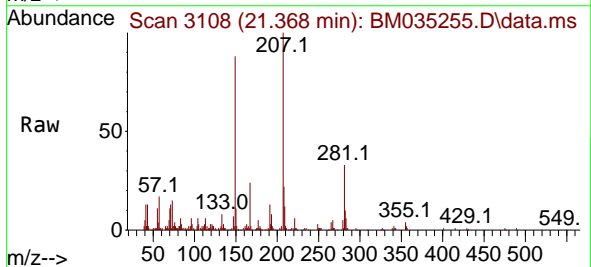
Instrument :
 BNA_M
 ClientSampleId :
 P008-SS002-0006-01

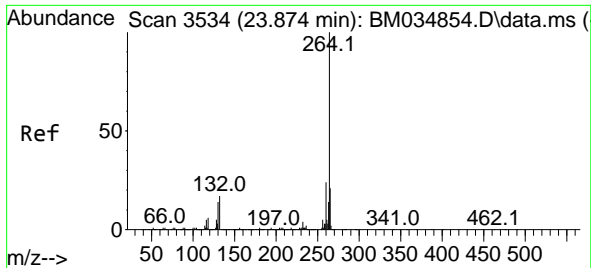
Tgt Ion:244 Resp: 1694448
 Ion Ratio Lower Upper
 244 100
 212 6.4 6.2 9.4
 122 8.0 8.3 12.5#



#84
 Bis(2-ethylhexyl)phthalate
 Concen: 2.283 ng
 RT: 21.368 min Scan# 3108
 Delta R.T. -0.024 min
 Lab File: BM035255.D
 Acq: 25 May 2022 23:23

Tgt Ion:149 Resp: 57119
 Ion Ratio Lower Upper
 149 100
 167 27.0 21.1 31.7
 279 5.9 2.8 4.2#





#86
 Perylene-d12
 Concen: 20.000 ng
 RT: 23.821 min Scan# 31
 Delta R.T. -0.035 min
 Lab File: BM035255.D
 Acq: 25 May 2022 23:23

Instrument :
 BNA_M
 ClientSampleId :
 P008-SS002-0006-01

Tgt Ion:264 Resp: 611353

Ion	Ratio	Lower	Upper
264	100		
260	23.1	18.9	28.3
265	22.2	17.5	26.3

