

Data Path : Z:\svoasrv\HPCHEM1\BNA_M\Data\BM061722\
 Data File : BM035514.D
 Acq On : 18 Jun 2022 03:27
 Operator : CG/JU
 Sample : PB145488BS
 Misc :
 ALS Vial : 30 Sample Multiplier: 1

Instrument :
 BNA_M
 ClientSampleId :
 SLCS488

Manual Integrations
 APPROVED

Reviewed By :Jagrut Upadhyay 06/18/2022
 Supervised By :Yogesh Patel 06/22/2022

Quant Time: Jun 18 04:25:41 2022
 Quant Method : Z:\svoasrv\HPCHEM1\BNA_M\Methods\SFAM-EPA-BM061622.M
 Quant Title : SVOA CALIBRATION
 QLast Update : Fri Jun 17 01:58:49 2022
 Response via : Initial Calibration

Compound	R.T.	QIon	Response	Conc	Units	Dev(Min)
Internal Standards						
1) 1,4-Dichlorobenzene-d4	7.810	152	196886	20.000	ng/u1	0.00
20) Naphthalene-d8	10.604	136	839338	20.000	ng/u1	0.00
38) Acenaphthene-d10	14.451	164	479258	20.000	ng/u1	0.00
64) Phenanthrene-d10	17.198	188	947359	20.000	ng/u1	0.00
79) Chrysene-d12	21.386	240	959346	20.000	ng/u1	0.00
88) Perylene-d12	23.727	264	1034640	20.000	ng/u1	0.00
System Monitoring Compounds						
3) 1,4-Dioxane-d8	3.263	96	29231	5.927	ng/uL	0.00
4) Pyridine-d5	3.681	84	341810	28.138	ng/u1	0.00
7) Phenol-d5	6.992	99	464263	30.768	ng/u1	0.00
9) Bis-(2-Chloroethyl)eth...	7.145	67	282851	30.143	ng/u1	0.00
11) 2-Chlorophenol-d4	7.345	132	420641	32.185	ng/u1	0.00
15) 4-Methylphenol-d8	8.533	113	384543	30.443	ng/u1	0.00
21) Nitrobenzene-d5	8.969	128	193158	30.916	ng/u1	0.00
24) 2-Nitrophenol-d4	9.692	143	209578	31.108	ng/u1	0.00
28) 2,4-Dichlorophenol-d3	10.245	165	357755	31.276	ng/u1	0.00
31) 4-Chloroaniline-d4	10.751	131	815363	45.303	ng/u1	0.00
46) Dimethylphthalate-d6	13.868	166	1036298	31.788	ng/u1	0.00
49) Acenaphthylene-d8	14.145	160	1270563	31.451	ng/u1	0.00
54) 4-Nitrophenol-d4	14.692	143	150412	30.036	ng/u1	-0.01
60) Fluorene-d10	15.445	176	883252	31.291	ng/u1	0.00
65) 4,6-Dinitro-2-methylph...	15.586	200	178142	31.541	ng/u1	0.00
73) Anthracene-d10	17.298	188	1343585	31.552	ng/u1	0.00
81) Pyrene-d10	19.592	212	1538900	32.628	ng/u1	0.00
92) Benzo(a)pyrene-d12	23.574	264	1641495	32.894	ng/u1	0.00
Target Compounds						
2) 1,4-Dioxane	3.298	88	56909	11.381	ng/uL	97
5) Pyridine	3.698	79	354792	27.692	ng/u1	98
6) Benzaldehyde	6.957	77	277754m	42.975	ng/u1	
8) Phenol	7.022	94	481009	29.874	ng/u1	99
10) Bis(2-Chloroethyl)ether	7.239	93	371490	29.541	ng/u1	96
12) 2-Chlorophenol	7.375	128	422483	31.212	ng/u1	99
13) 2-Methylphenol	8.269	108	356309	29.875	ng/u1	96
14) 2,2'-oxybis(1-Chloropr...	8.345	45	530677	28.310	ng/u1	99
16) Acetophenone	8.639	105	579099	30.237	ng/u1	97
17) N-Nitroso-di-n-propyla...	8.622	70	274530	30.380	ng/u1	98
18) 4-Methylphenol	8.598	108	380701	29.660	ng/u1	95
19) Hexachloroethane	8.880	117	162855	30.087	ng/u1	93
22) Nitrobenzene	9.016	77	397334	29.960	ng/u1	97
23) Isophorone	9.545	82	735048	29.303	ng/u1	99
25) 2-Nitrophenol	9.727	139	223240	30.444	ng/u1	96
26) 2,4-Dimethylphenol	9.798	107	389481	28.029	ng/u1	98
27) Bis(2-Chloroethoxy)met...	10.022	93	482665	29.672	ng/u1	99
29) 2,4-Dichlorophenol	10.269	162	350358	30.187	ng/u1	98
30) Naphthalene	10.651	128	1261026	29.408	ng/u1	99
32) 4-Chloroaniline	10.774	127	506534	28.270	ng/u1	97
33) Hexachlorobutadiene	10.939	225	218480	29.917	ng/u1	99
34) Caprolactam	11.569	113	114402	29.274	ng/u1	90
35) 4-Chloro-3-methylphenol	11.921	107	368308	30.271	ng/u1	95
36) 2-Methylnaphthalene	12.274	142	818055	29.340	ng/u1	99

Data Path : Z:\svoasrv\HPCHEM1\BNA_M\Data\BM061722\
 Data File : BM035514.D
 Acq On : 18 Jun 2022 03:27
 Operator : CG/JU
 Sample : PB145488BS
 Misc :
 ALS Vial : 30 Sample Multiplier: 1

Instrument :
 BNA_M
 ClientSampleId :
 SLCS488

Manual Integrations
 APPROVED

Reviewed By :Jagrut Upadhyay 06/18/2022
 Supervised By :Yogesh Patel 06/22/2022

Quant Time: Jun 18 04:25:41 2022
 Quant Method : Z:\svoasrv\HPCHEM1\BNA_M\Methods\SFAM-EPA-BM061622.M
 Quant Title : SVOA CALIBRATION
 QLast Update : Fri Jun 17 01:58:49 2022
 Response via : Initial Calibration

Compound	R.T.	QIon	Response	Conc	Units	Dev(Min)
37) 1-Methylnaphthalene	12.492	142	842795	29.924	ng/ul	99
39) 1,2,4,5-Tetrachloroben...	12.645	216	404215	30.120	ng/ul	98
40) Hexachlorocyclopentadiene	12.621	237	123596	25.045	ng/ul	99
41) 2,4,6-Trichlorophenol	12.898	196	243024	29.033	ng/ul	98
42) 2,4,5-Trichlorophenol	12.980	196	258776	29.796	ng/ul	100
43) 1,1'-Biphenyl	13.286	154	1075739	30.015	ng/ul	100
44) 2-Chloronaphthalene	13.327	162	836216	30.530	ng/ul	99
45) 2-Nitroaniline	13.545	65	219409	31.071	ng/ul	95
47) Dimethylphthalate	13.915	163	1010392	30.732	ng/ul	99
48) 2,6-Dinitrotoluene	14.039	165	208683	32.105	ng/ul	99
50) Acenaphthylene	14.174	152	1352443	30.345	ng/ul	99
51) 3-Nitroaniline	14.374	138	220124	33.051	ng/ul	97
52) Acenaphthene	14.515	153	884548	29.918	ng/ul	99
53) 2,4-Dinitrophenol	14.604	184	100783	28.136	ng/ul	92
55) 4-Nitrophenol	14.710	109	95387	29.309	ng/ul	93
56) Dibenzofuran	14.851	168	1222868	30.221	ng/ul	99
57) 2,4-Dinitrotoluene	14.833	165	307355	32.565	ng/ul	97
58) 2,3,4,6-Tetrachlorophenol	15.092	232	194381	27.098	ng/ul	98
59) Diethylphthalate	15.280	149	1017671	30.548	ng/ul	98
61) Fluorene	15.504	166	1005208	30.589	ng/ul	100
62) 4-Chlorophenyl-phenyle...	15.498	204	472451	30.632	ng/ul	97
63) 4-Nitroaniline	15.539	138	208100	34.979	ng/ul	98
66) 4,6-Dinitro-2-methylph...	15.604	198	169969	30.241	ng/ul	97
67) N-Nitrosodiphenylamine	15.709	169	864955	31.194	ng/ul	99
68) 4-Bromophenyl-phenylether	16.392	248	281787	31.017	ng/ul	98
69) Hexachlorobenzene	16.509	284	324043	30.830	ng/ul	100
70) Atrazine	16.674	200	69572	7.106	ng/ul	100
71) Pentachlorophenol	16.862	266	131196	23.677	ng/ul	98
72) Phenanthrene	17.239	178	1569467	30.768	ng/ul	99
74) Anthracene	17.333	178	1599827	30.652	ng/ul	100
75) 1,2,3,4-Tetrachloroben...	13.251	216	423857	29.310	ng/uL	96
76) Pentachlorobenzene	14.774	250	397518	30.917	ng/uL	99
77) Carbazole	17.609	167	1464938	31.101	ng/ul	99
78) Di-n-butylphthalate	18.174	149	1766199	27.066	ng/ul	99
80) Fluoranthene	19.262	202	1806576	31.488	ng/ul	100
82) Pyrene	19.621	202	1887699	31.435	ng/ul	99
83) Butylbenzylphthalate	20.521	149	810485	31.394	ng/ul	99
84) 3,3'-Dichlorobenzidine	21.309	252	600934	34.344	ng/ul	99
85) Benzo(a)anthracene	21.374	228	1816574	31.361	ng/ul	99
86) Bis(2-ethylhexyl)phtha...	21.303	149	1210269	31.591	ng/ul	100
87) Chrysene	21.421	228	1816933	31.465	ng/ul	99
89) Di-n-octyl phthalate	22.203	149	2154775	31.732	ng/ul	100
90) Benzo(b)fluoranthene	23.015	252	1935697	31.499	ng/ul	99
91) Benzo(k)fluoranthene	23.062	252	1890447	31.982	ng/ul	99
93) Benzo(a)pyrene	23.621	252	1967066	31.928	ng/ul	99
94) Indeno(1,2,3-cd)pyrene	26.144	276	2295240	31.821	ng/ul	98
95) Dibenzo(a,h)anthracene	26.156	278	1965049	31.840	ng/ul	99
96) Benzo(g,h,i)perylene	26.885	276	1964516	31.779	ng/ul	99

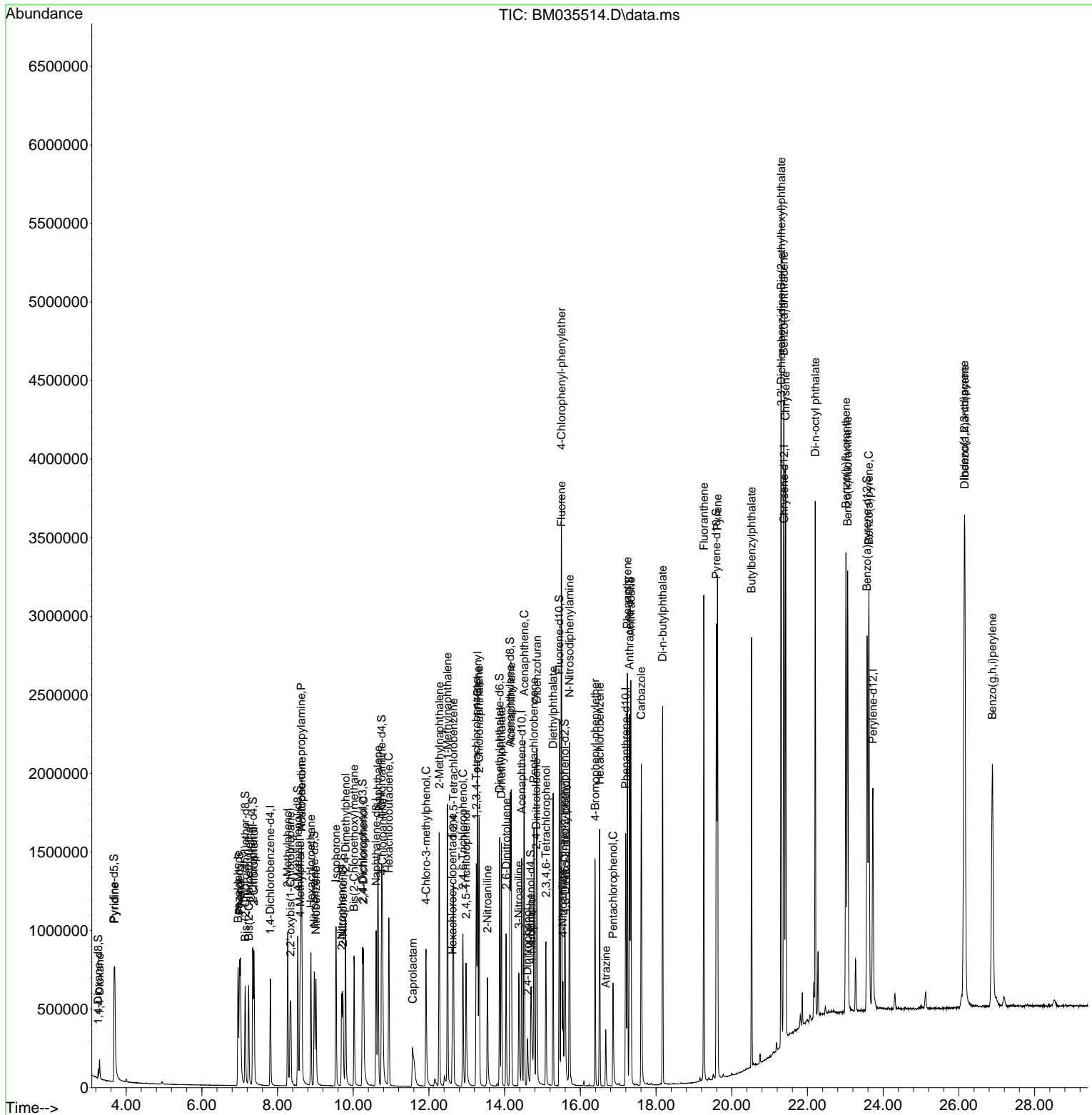
(#) = qualifier out of range (m) = manual integration (+) = signals summed

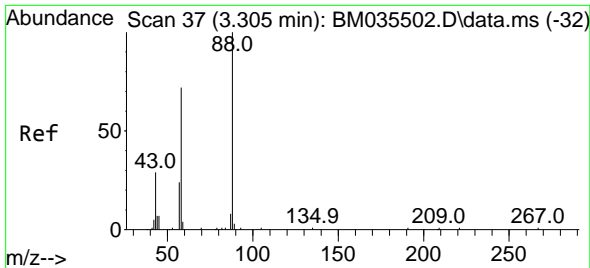
Data Path : Z:\svoasrv\HPCHEM1\BNA_M\Data\BM061722\
 Data File : BM035514.D
 Acq On : 18 Jun 2022 03:27
 Operator : CG/JU
 Sample : PB145488BS
 Misc :
 ALS Vial : 30 Sample Multiplier: 1

Instrument :
 BNA_M
 ClientSampleId :
 SLCS488

Quant Time: Jun 18 04:25:41 2022
 Quant Method : Z:\svoasrv\HPCHEM1\BNA_M\Methods\SFAM-EPA-BM061622.M
 Quant Title : SVOA CALIBRATION
 QLast Update : Fri Jun 17 01:58:49 2022
 Response via : Initial Calibration

Manual Integrations
APPROVED
 Reviewed By :Jagru Upadhyay 06/18/2022
 Supervised By :Yogesh Patel 06/22/2022





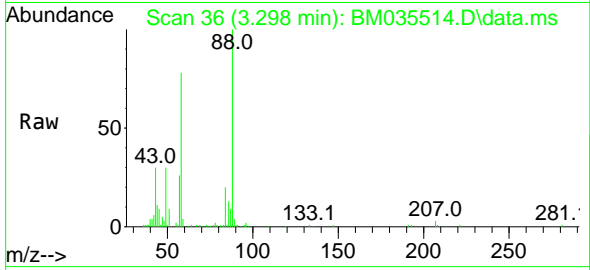
#2
 1,4-Dioxane
 Concen: 11.381 ng/uL
 RT: 3.298 min Scan# 30
 Delta R.T. -0.001 min
 Lab File: BM035514.D
 Acq: 18 Jun 2022 03:27

Instrument :

BNA_M

Client Sampled :

SLCS488

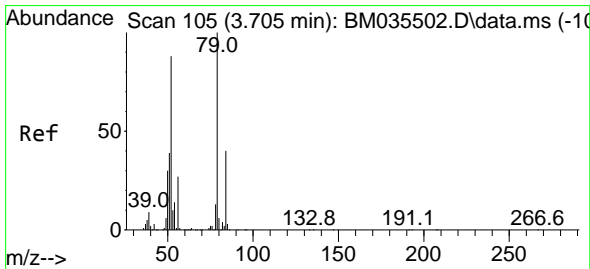
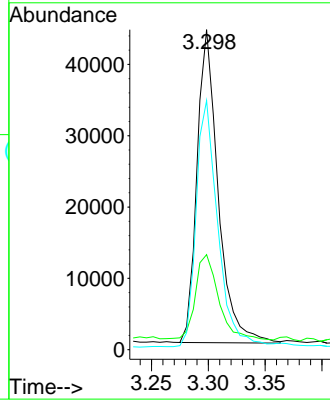
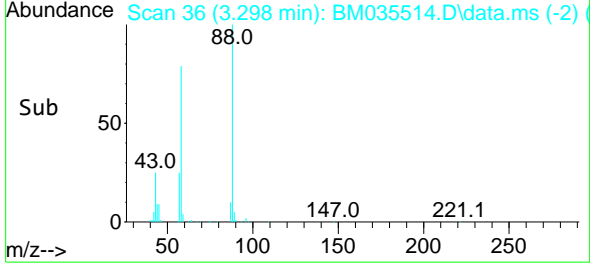


Tgt Ion: 88 Resp: 56909
 Ion Ratio Lower Upper
 88 100
 43 29.7 27.8 41.8
 58 77.9 61.8 92.8

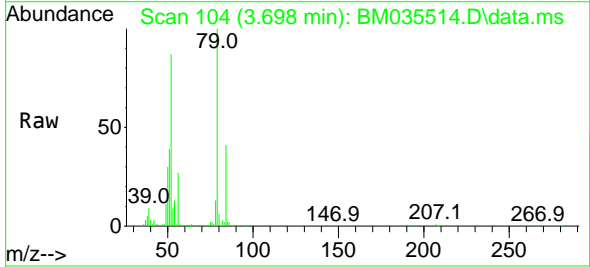
Manual Integrations

APPROVED

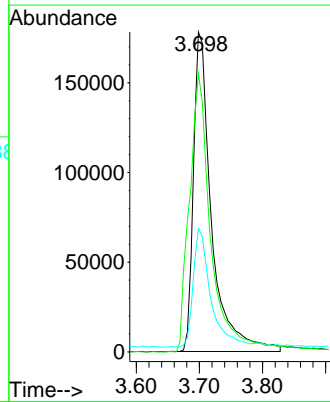
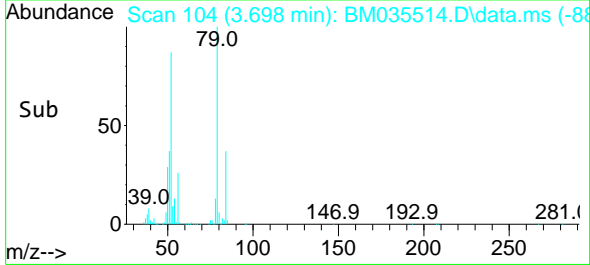
Reviewed By :Jagrut Upadhyay 06/18/2022
 Supervised By :Yogesh Patel 06/22/2022

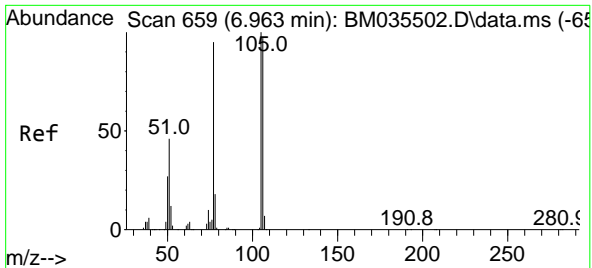


#5
 Pyridine
 Concen: 27.692 ng/uL
 RT: 3.698 min Scan# 104
 Delta R.T. -0.006 min
 Lab File: BM035514.D
 Acq: 18 Jun 2022 03:27



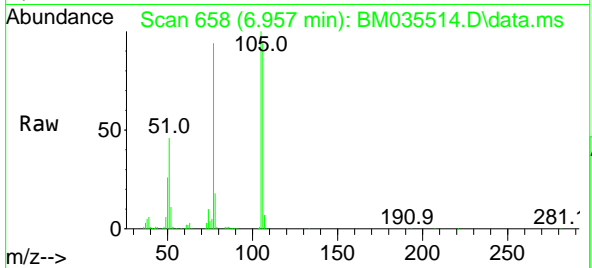
Tgt Ion: 79 Resp: 354792
 Ion Ratio Lower Upper
 79 100
 52 86.8 67.8 101.6
 51 38.6 31.4 47.0





#6
Benzaldehyde
Concen: 42.975 ng/ul m
RT: 6.957 min Scan# 658
Delta R.T. -0.006 min
Lab File: BM035514.D
Acq: 18 Jun 2022 03:27

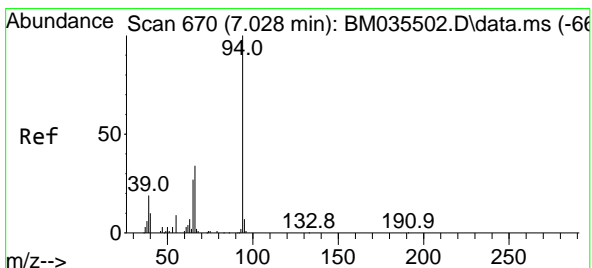
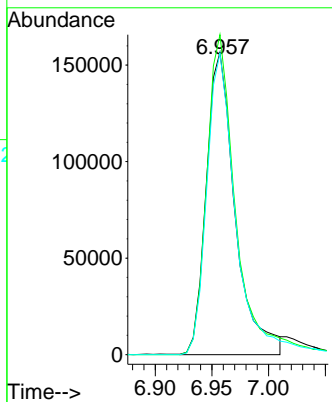
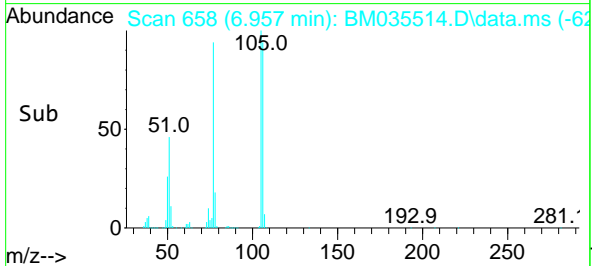
Instrument :
BNA_M
ClientSampleId :
SLCS488



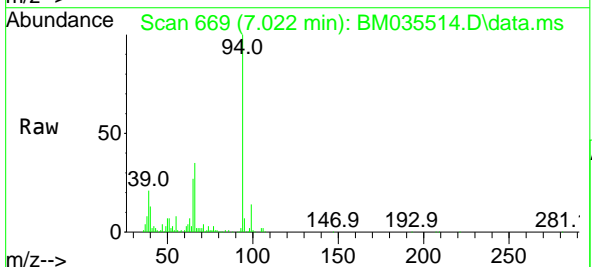
Tgt Ion: 77 Resp: 277754
Ion Ratio Lower Upper
77 100
105 105.8 84.6 127.0
106 99.7 80.3 120.5

Manual Integrations
APPROVED

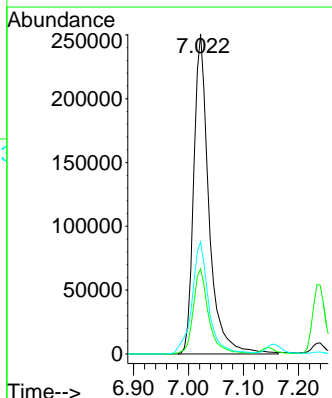
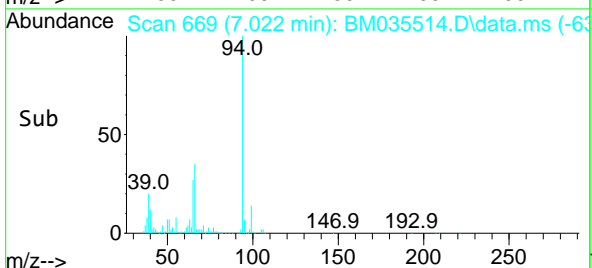
Reviewed By :Jagrut Upadhyay 06/18/2022
Supervised By :Yogesh Patel 06/22/2022

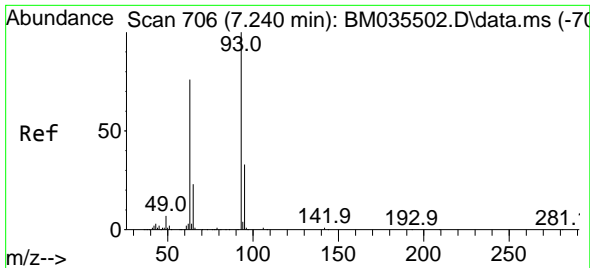


#8
Phenol
Concen: 29.874 ng/ul
RT: 7.022 min Scan# 669
Delta R.T. -0.006 min
Lab File: BM035514.D
Acq: 18 Jun 2022 03:27



Tgt Ion: 94 Resp: 481009
Ion Ratio Lower Upper
94 100
65 26.6 21.3 31.9
66 34.9 27.4 41.0





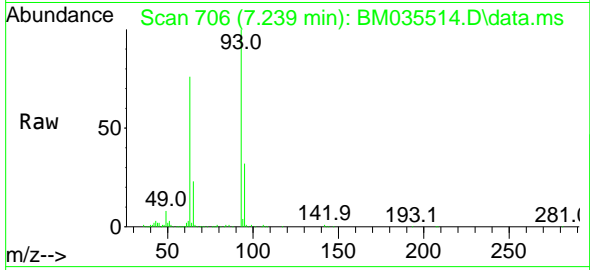
#10
 Bis(2-Chloroethyl)ether
 Concen: 29.541 ng/ul
 RT: 7.239 min Scan# 706
 Delta R.T. -0.000 min
 Lab File: BM035514.D
 Acq: 18 Jun 2022 03:27

Instrument :

BNA_M

ClientSampled :

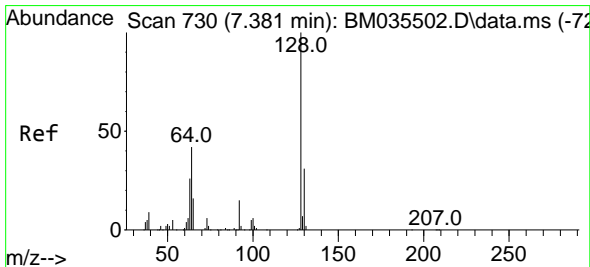
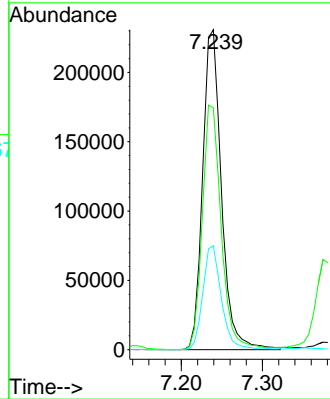
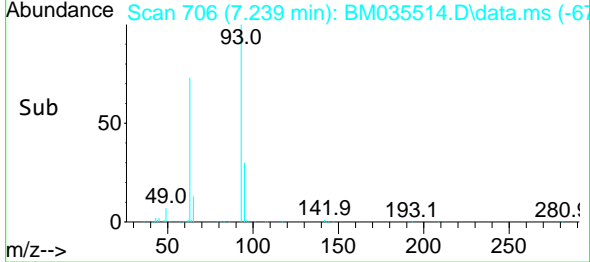
SLCS488



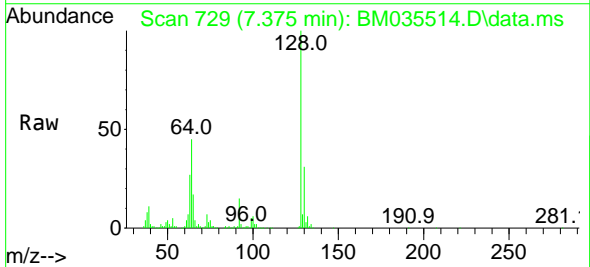
Tgt Ion: 93 Resp: 371490
 Ion Ratio Lower Upper
 93 100
 63 75.6 64.0 96.0
 95 32.5 25.8 38.6

Manual Integrations
 APPROVED

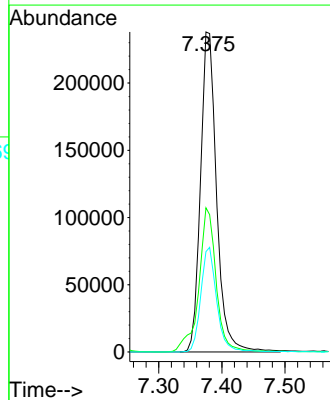
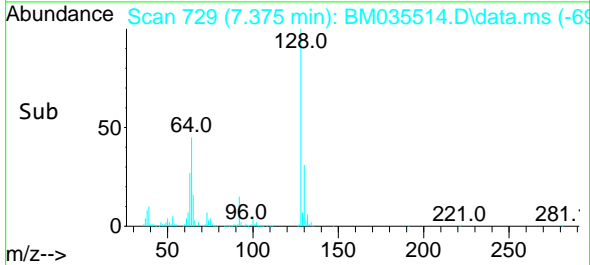
Reviewed By :Jagrut Upadhyay 06/18/2022
 Supervised By :Yogesh Patel 06/22/2022

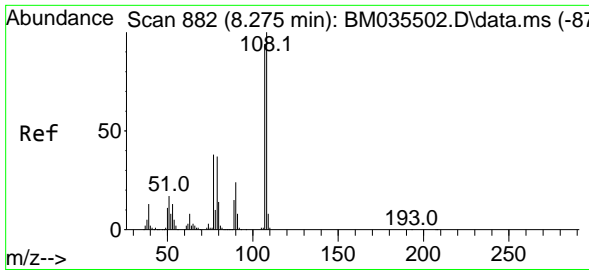


#12
 2-Chlorophenol
 Concen: 31.212 ng/ul
 RT: 7.375 min Scan# 729
 Delta R.T. -0.006 min
 Lab File: BM035514.D
 Acq: 18 Jun 2022 03:27



Tgt Ion:128 Resp: 422483
 Ion Ratio Lower Upper
 128 100
 64 45.1 36.9 55.3
 130 31.3 25.6 38.4





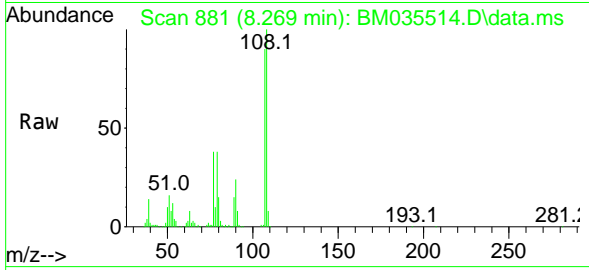
#13
 2-Methylphenol
 Concen: 29.875 ng/ul
 RT: 8.269 min Scan# 881
 Delta R.T. -0.006 min
 Lab File: BM035514.D
 Acq: 18 Jun 2022 03:27

Instrument :

BNA_M

Client Sample Id :

SLCS488

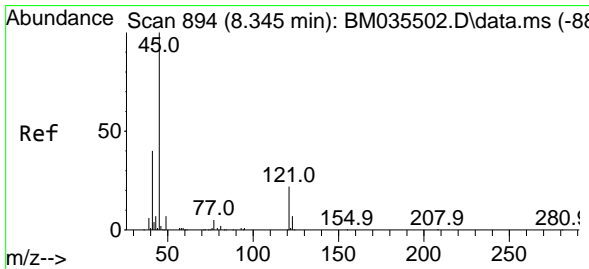
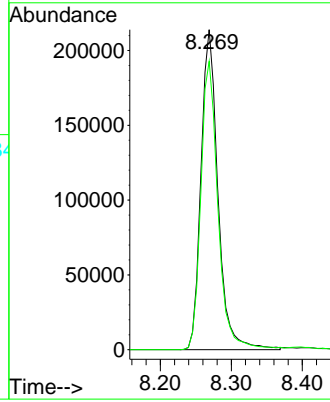
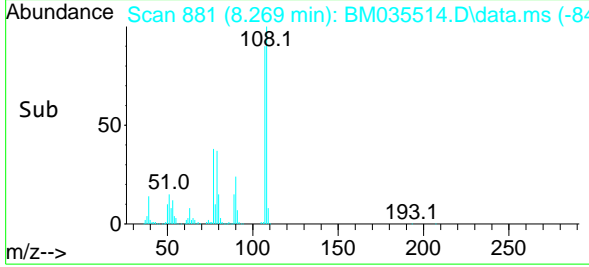


Tgt Ion: 108 Resp: 356309
 Ion Ratio Lower Upper
 108 100
 107 90.1 75.0 112.4

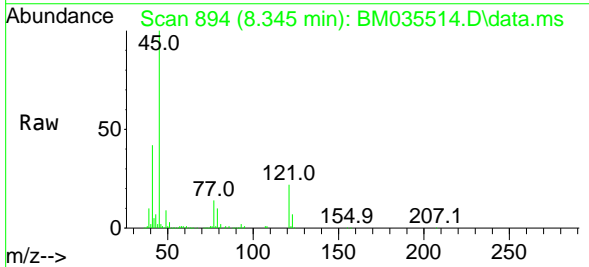
Manual Integrations

APPROVED

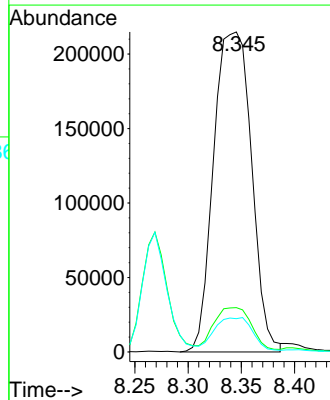
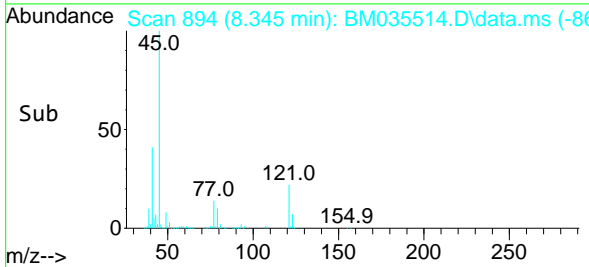
Reviewed By :Jagrut Upadhyay 06/18/2022
 Supervised By :Yogesh Patel 06/22/2022

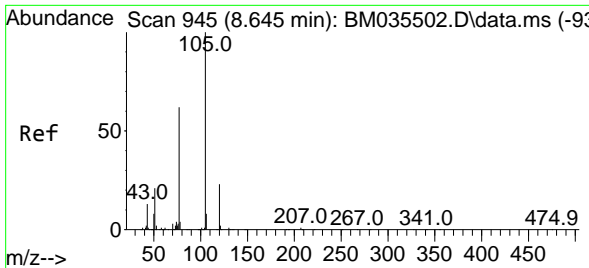


#14
 2,2'-oxybis(1-Chloropropane)
 Concen: 28.310 ng/ul
 RT: 8.345 min Scan# 894
 Delta R.T. -0.000 min
 Lab File: BM035514.D
 Acq: 18 Jun 2022 03:27



Tgt Ion: 45 Resp: 530677
 Ion Ratio Lower Upper
 45 100
 77 13.8 10.6 15.8
 79 10.4 8.3 12.5





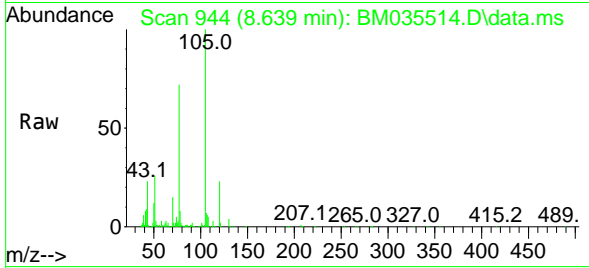
#16
 Acetophenone
 Concen: 30.237 ng/u1
 RT: 8.639 min Scan# 944
 Delta R.T. -0.006 min
 Lab File: BM035514.D
 Acq: 18 Jun 2022 03:27

Instrument :

BNA_M

Client Sample Id :

SLCS488

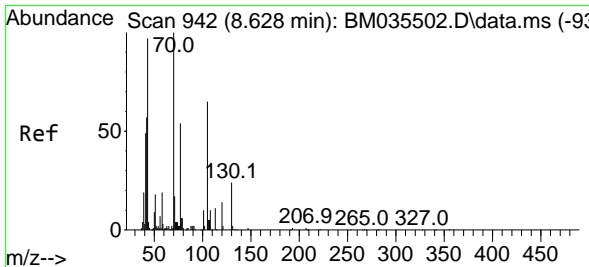
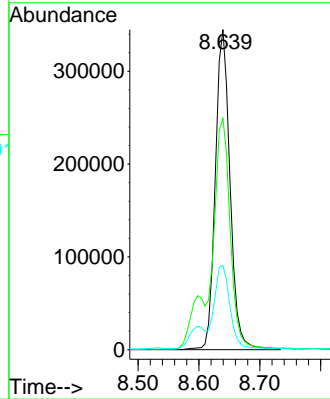
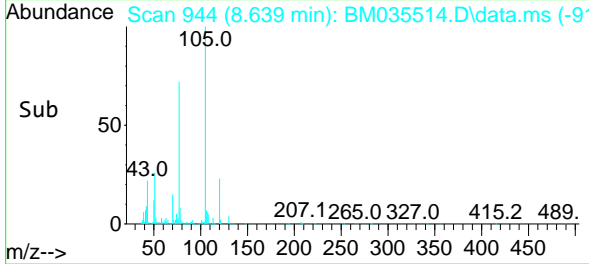


Tgt Ion: 105 Resp: 579099
 Ion Ratio Lower Upper
 105 100
 77 72.3 59.8 89.6
 51 26.3 22.1 33.1

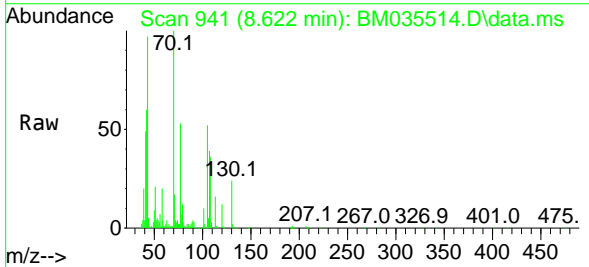
Manual Integrations

APPROVED

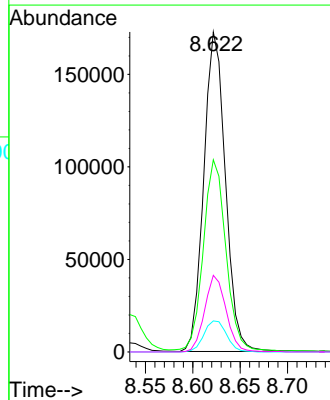
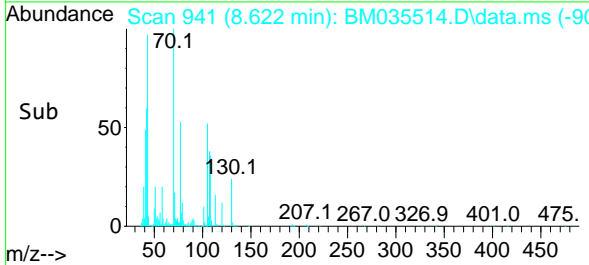
Reviewed By :Jagrut Upadhyay 06/18/2022
 Supervised By :Yogesh Patel 06/22/2022

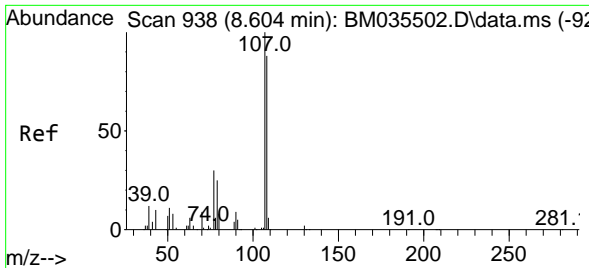


#17
 N-Nitroso-di-n-propylamine
 Concen: 30.380 ng/u1
 RT: 8.622 min Scan# 941
 Delta R.T. -0.006 min
 Lab File: BM035514.D
 Acq: 18 Jun 2022 03:27



Tgt Ion: 70 Resp: 274530
 Ion Ratio Lower Upper
 70 100
 42 60.1 49.6 74.4
 101 9.7 8.1 12.1
 130 23.9 18.4 27.6





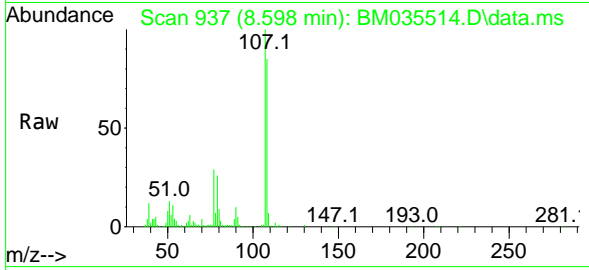
#18
 4-Methylphenol
 Concen: 29.660 ng/u1
 RT: 8.598 min Scan# 911
 Delta R.T. -0.006 min
 Lab File: BM035514.D
 Acq: 18 Jun 2022 03:27

Instrument :

BNA_M

ClientSampleId :

SLCS488

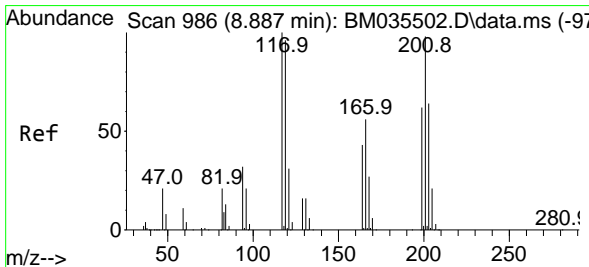
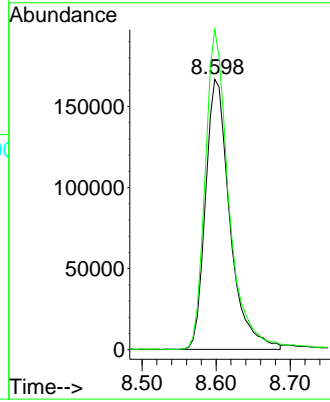
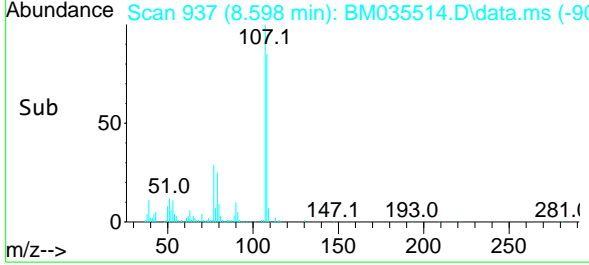


Tgt Ion:108 Resp: 38070
 Ion Ratio Lower Upper
 108 100
 107 118.3 90.3 135.5

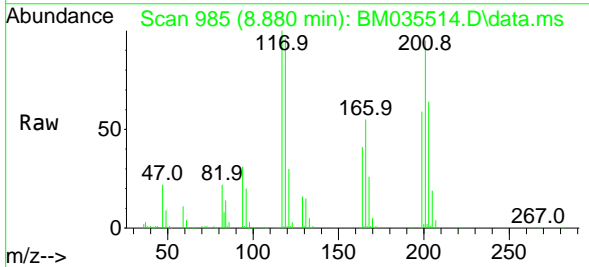
Manual Integrations

APPROVED

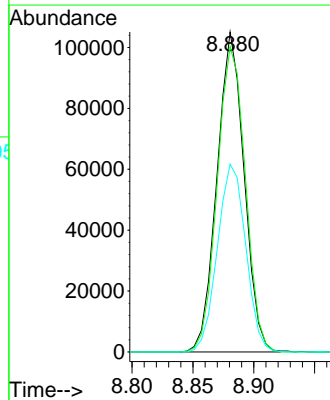
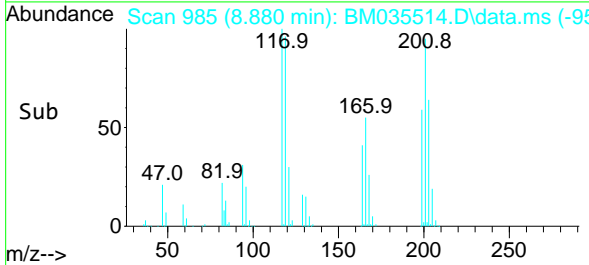
Reviewed By :Jagrut Upadhyay 06/18/2022
 Supervised By :Yogesh Patel 06/22/2022

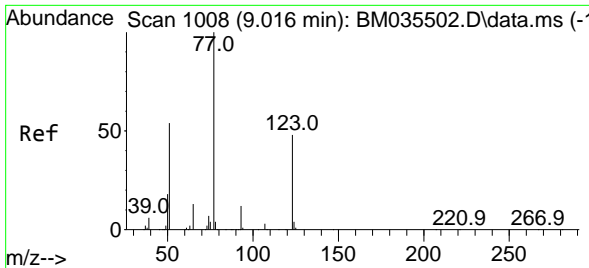


#19
 Hexachloroethane
 Concen: 30.087 ng/u1
 RT: 8.880 min Scan# 985
 Delta R.T. -0.006 min
 Lab File: BM035514.D
 Acq: 18 Jun 2022 03:27



Tgt Ion:117 Resp: 162855
 Ion Ratio Lower Upper
 117 100
 201 95.4 81.8 122.6
 199 58.7 51.6 77.4





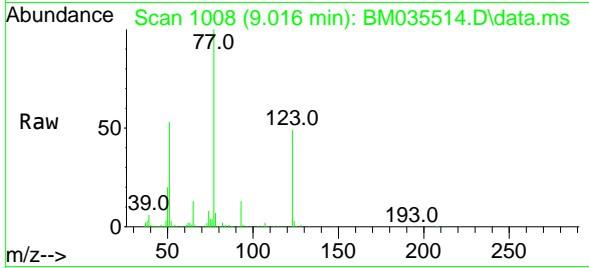
#22
 Nitrobenzene
 Concen: 29.960 ng/u1
 RT: 9.016 min Scan# 1008
 Delta R.T. -0.000 min
 Lab File: BM035514.D
 Acq: 18 Jun 2022 03:27

Instrument :

BNA_M

Client SampleId :

SLCS488

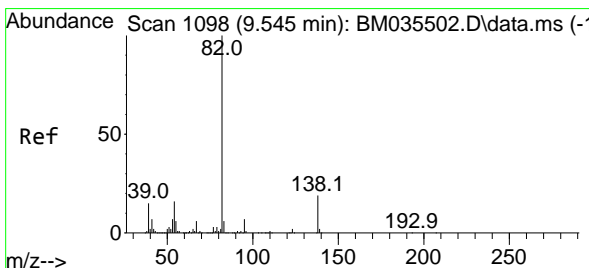
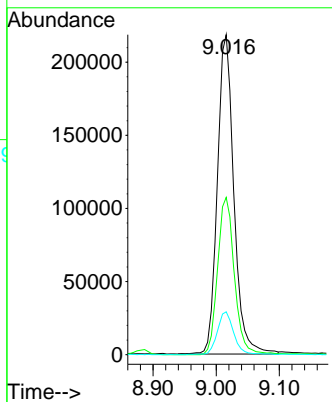
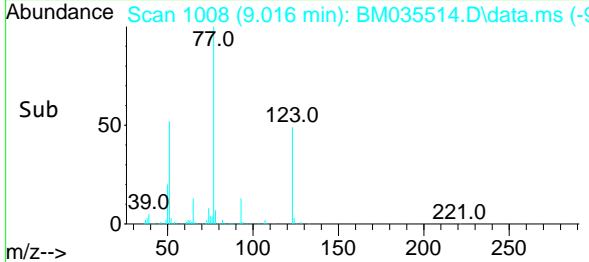


Tgt Ion: 77 Resp: 397334
 Ion Ratio Lower Upper
 77 100
 123 49.1 37.4 56.0
 65 13.4 10.8 16.2

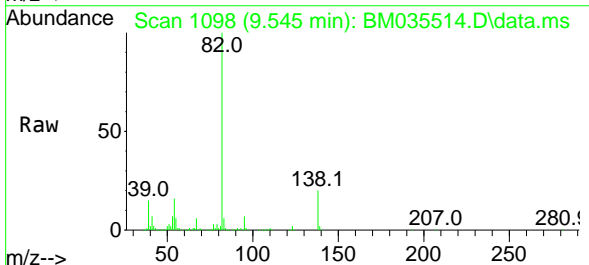
Manual Integrations

APPROVED

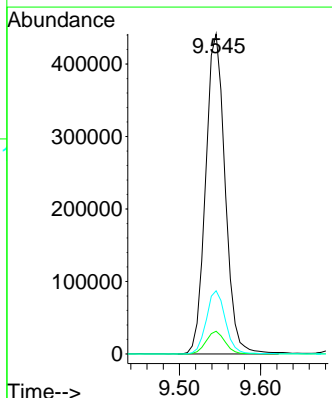
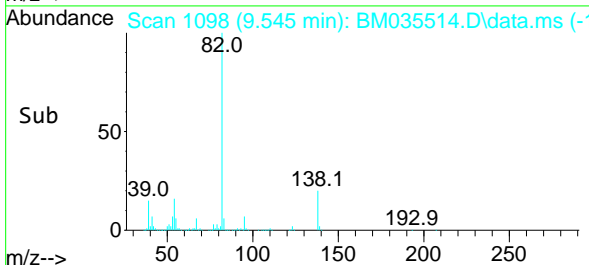
Reviewed By :Jagrut Upadhyay 06/18/2022
 Supervised By :Yogesh Patel 06/22/2022

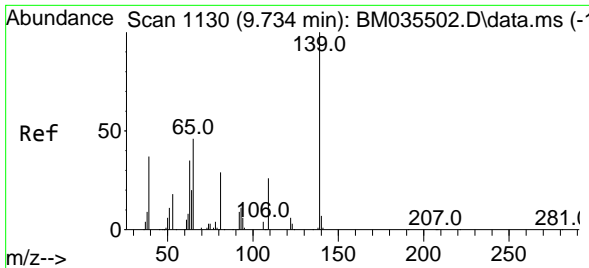


#23
 Isophorone
 Concen: 29.303 ng/u1
 RT: 9.545 min Scan# 1098
 Delta R.T. -0.000 min
 Lab File: BM035514.D
 Acq: 18 Jun 2022 03:27



Tgt Ion: 82 Resp: 735048
 Ion Ratio Lower Upper
 82 100
 95 7.1 5.5 8.3
 138 19.8 15.3 22.9





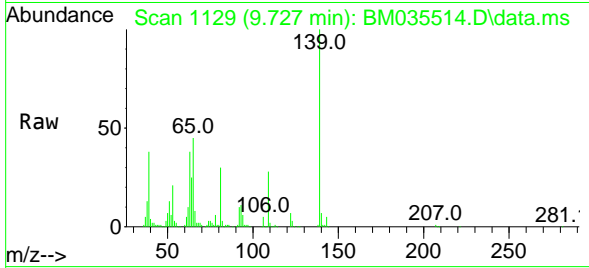
#25
 2-Nitrophenol
 Concen: 30.444 ng/uI
 RT: 9.727 min Scan# 1129
 Delta R.T. -0.006 min
 Lab File: BM035514.D
 Acq: 18 Jun 2022 03:27

Instrument :

BNA_M

ClientSampleId :

SLCS488

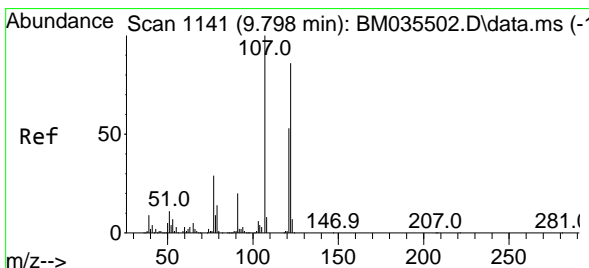
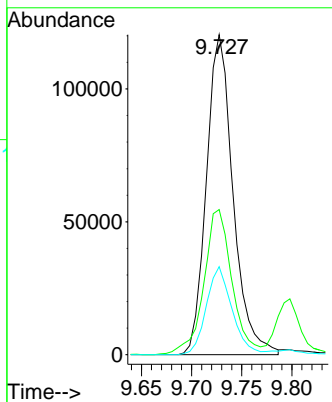
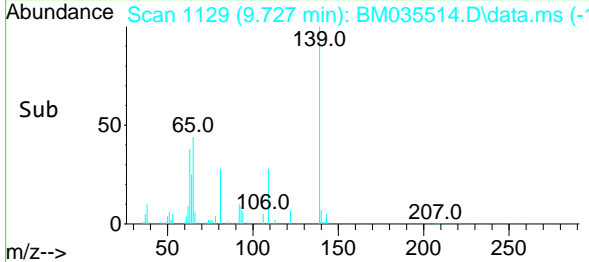


Tgt Ion:139 Resp: 223240
 Ion Ratio Lower Upper
 139 100
 65 45.4 39.8 59.6
 109 27.5 22.2 33.4

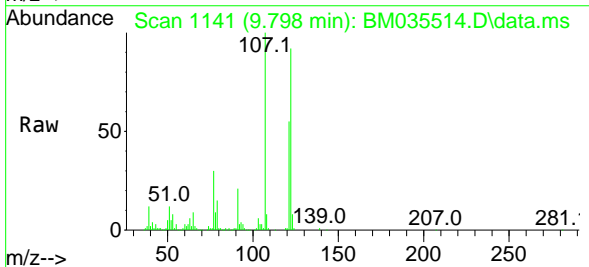
Manual Integrations

APPROVED

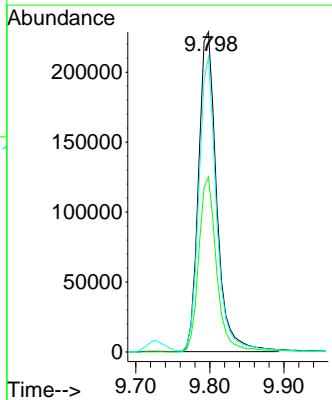
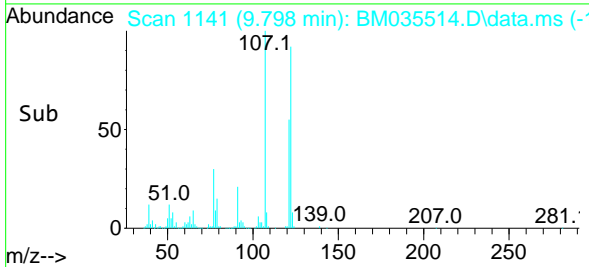
Reviewed By :Jagrut Upadhyay 06/18/2022
 Supervised By :Yogesh Patel 06/22/2022

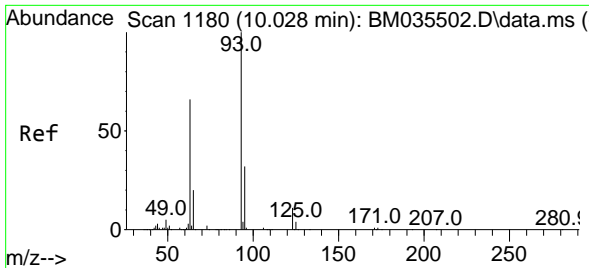


#26
 2,4-Dimethylphenol
 Concen: 28.029 ng/uI
 RT: 9.798 min Scan# 1141
 Delta R.T. -0.006 min
 Lab File: BM035514.D
 Acq: 18 Jun 2022 03:27



Tgt Ion:107 Resp: 389481
 Ion Ratio Lower Upper
 107 100
 121 54.7 42.7 64.1
 122 92.1 71.5 107.3





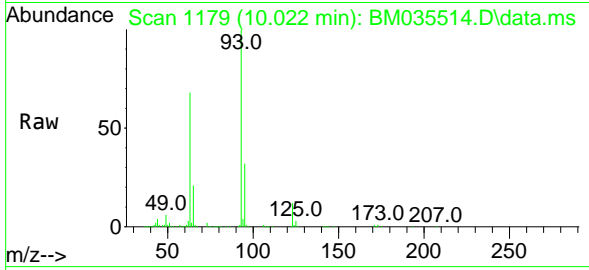
#27
 Bis(2-Chloroethoxy)methane
 Concen: 29.672 ng/ul
 RT: 10.022 min Scan# 1180
 Delta R.T. -0.006 min
 Lab File: BM035514.D
 Acq: 18 Jun 2022 03:27

Instrument :

BNA_M

ClientSampleId :

SLCS488

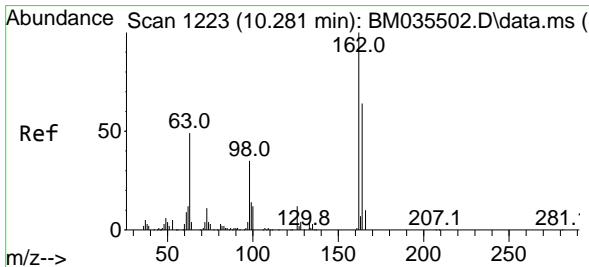
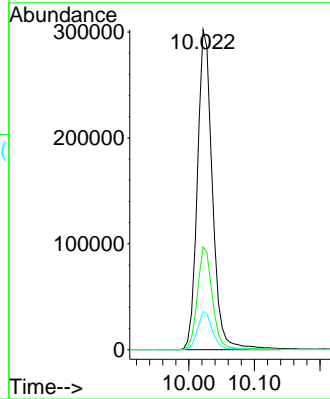
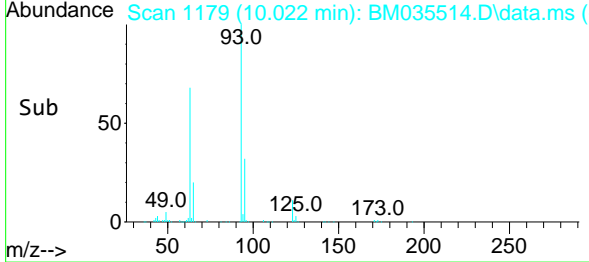


Tgt Ion: 93 Resp: 48266
 Ion Ratio Lower Upper
 93 100
 95 32.1 26.1 39.1
 123 11.9 9.4 14.0

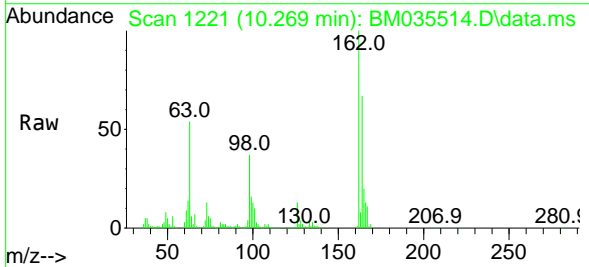
Manual Integrations

APPROVED

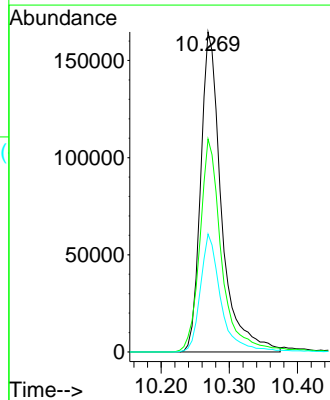
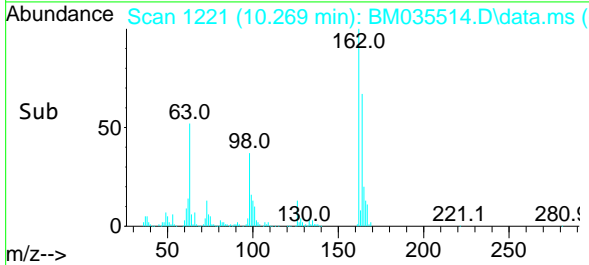
Reviewed By :Jagrut Upadhyay 06/18/2022
 Supervised By :Yogesh Patel 06/22/2022

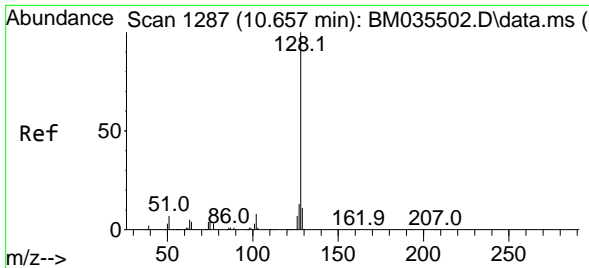


#29
 2,4-Dichlorophenol
 Concen: 30.187 ng/ul
 RT: 10.269 min Scan# 1221
 Delta R.T. -0.006 min
 Lab File: BM035514.D
 Acq: 18 Jun 2022 03:27



Tgt Ion:162 Resp: 350358
 Ion Ratio Lower Upper
 162 100
 164 66.5 51.8 77.6
 98 36.9 29.5 44.3





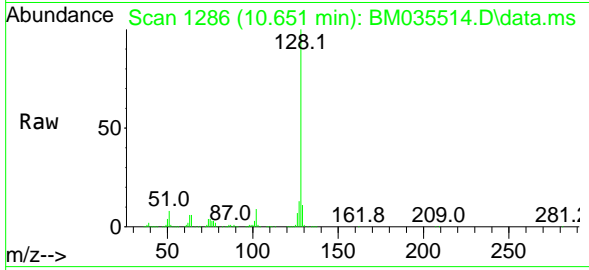
#30
 Naphthalene
 Concen: 29.408 ng/uI
 RT: 10.651 min Scan# 1286
 Delta R.T. -0.006 min
 Lab File: BM035514.D
 Acq: 18 Jun 2022 03:27

Instrument :

BNA_M

ClientSampleId :

SLCS488

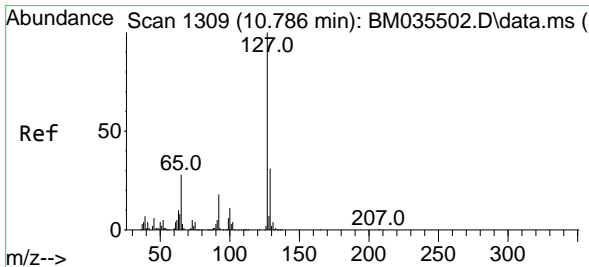
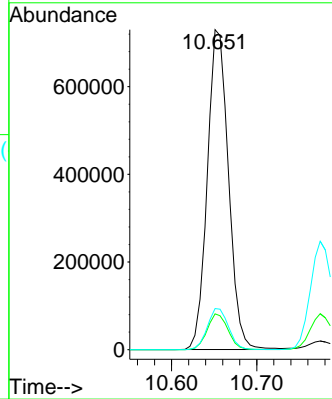
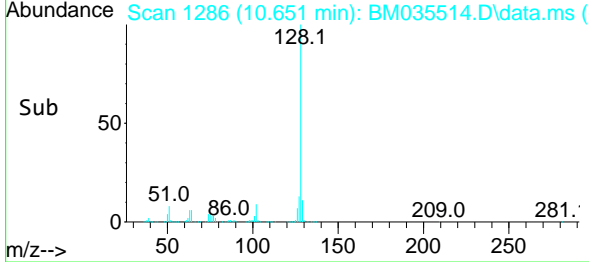


Tgt Ion:128 Resp: 1261020
 Ion Ratio Lower Upper
 128 100
 129 11.2 8.8 13.2
 127 12.9 10.6 16.0

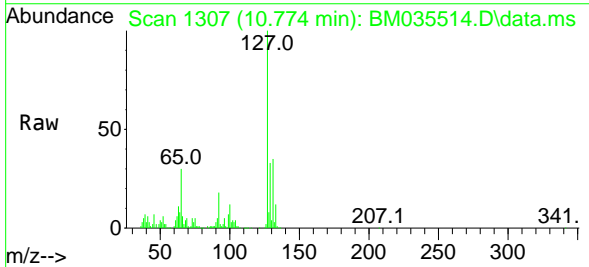
Manual Integrations

APPROVED

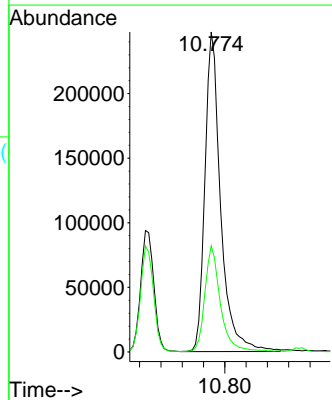
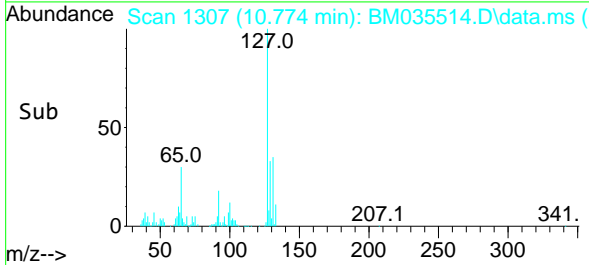
Reviewed By :Jagrut Upadhyay 06/18/2022
 Supervised By :Yogesh Patel 06/22/2022

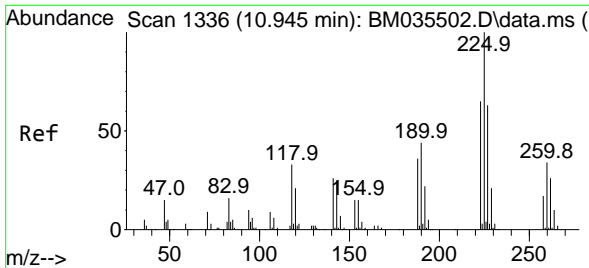


#32
 4-Chloroaniline
 Concen: 28.270 ng/uI
 RT: 10.774 min Scan# 1307
 Delta R.T. -0.012 min
 Lab File: BM035514.D
 Acq: 18 Jun 2022 03:27



Tgt Ion:127 Resp: 506534
 Ion Ratio Lower Upper
 127 100
 129 33.1 25.3 37.9





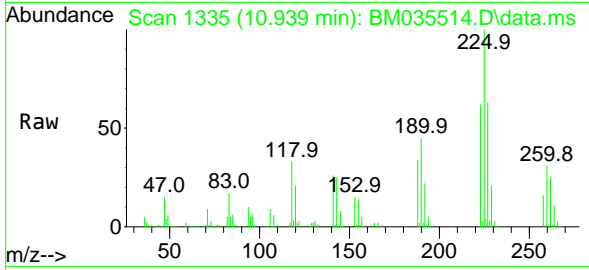
#33
 Hexachlorobutadiene
 Concen: 29.917 ng/uI
 RT: 10.939 min Scan# 11
 Delta R.T. -0.006 min
 Lab File: BM035514.D
 Acq: 18 Jun 2022 03:27

Instrument :

BNA_M

ClientSampleId :

SLCS488

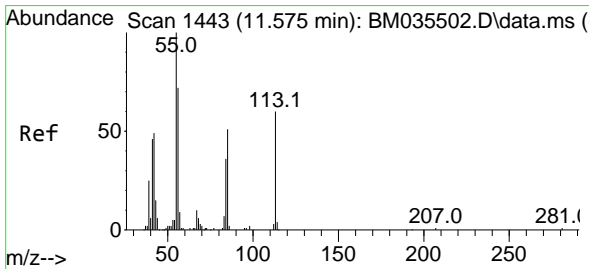
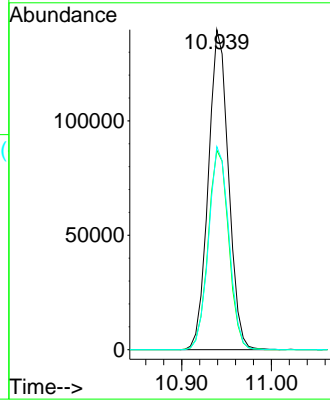
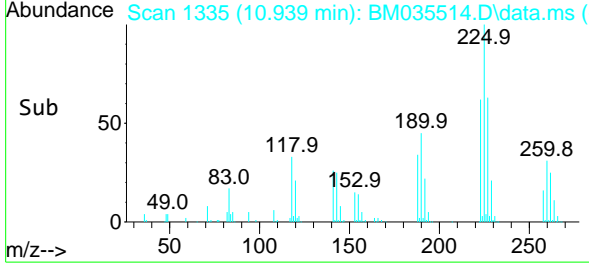


Tgt Ion:225 Resp: 218480
 Ion Ratio Lower Upper
 225 100
 223 62.3 50.0 75.0
 227 63.4 49.9 74.9

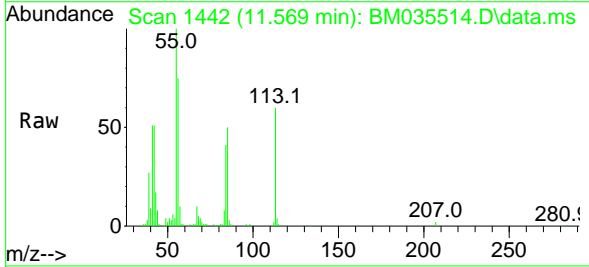
Manual Integrations

APPROVED

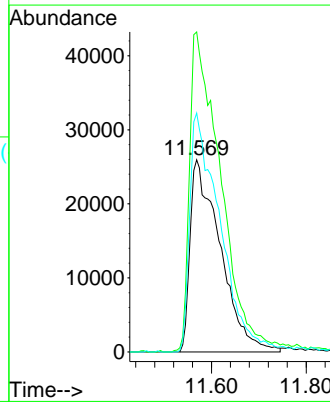
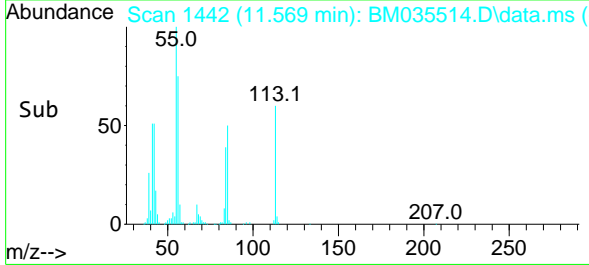
Reviewed By :Jagrut Upadhyay 06/18/2022
 Supervised By :Yogesh Patel 06/22/2022

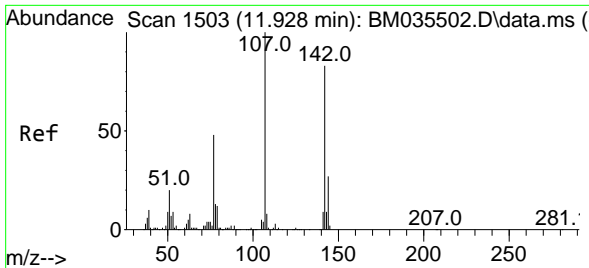


#34
 Caprolactam
 Concen: 29.274 ng/uI
 RT: 11.569 min Scan# 1442
 Delta R.T. -0.006 min
 Lab File: BM035514.D
 Acq: 18 Jun 2022 03:27



Tgt Ion:113 Resp: 114402
 Ion Ratio Lower Upper
 113 100
 55 166.5 150.2 225.4
 56 124.3 102.1 153.1





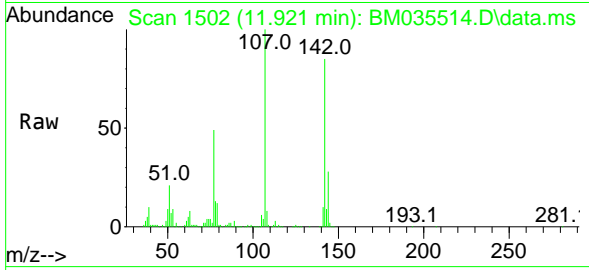
#35
 4-Chloro-3-methylphenol
 Concen: 30.271 ng/ul
 RT: 11.921 min Scan# 11921
 Delta R.T. -0.006 min
 Lab File: BM035514.D
 Acq: 18 Jun 2022 03:27

Instrument :

BNA_M

ClientSampleId :

SLCS488

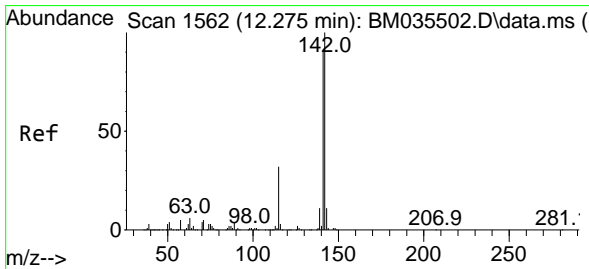
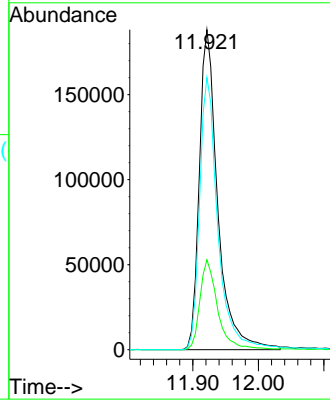
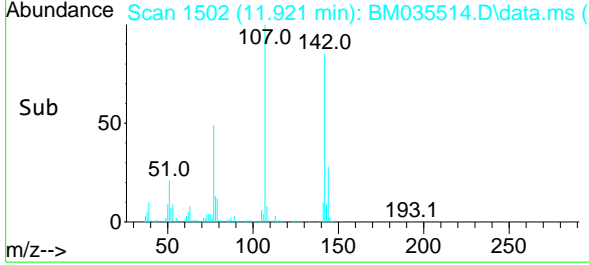


Tgt Ion:107 Resp: 368308
 Ion Ratio Lower Upper
 107 100
 144 28.1 20.3 30.5
 142 85.0 64.4 96.6

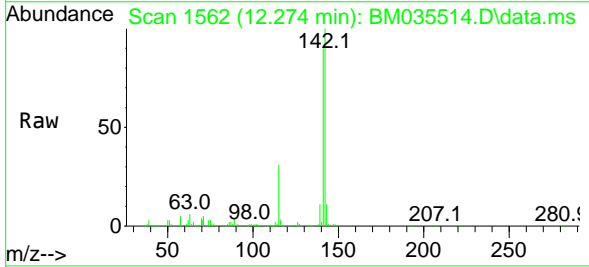
Manual Integrations

APPROVED

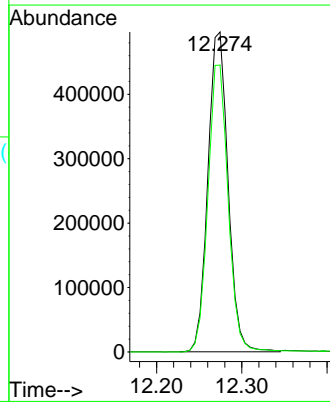
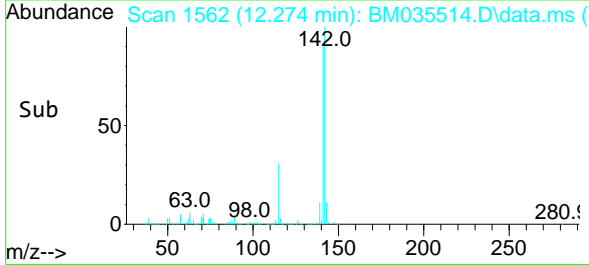
Reviewed By :Jagrut Upadhyay 06/18/2022
 Supervised By :Yogesh Patel 06/22/2022

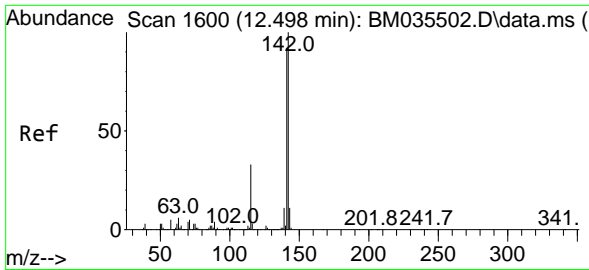


#36
 2-Methylnaphthalene
 Concen: 29.340 ng/ul
 RT: 12.274 min Scan# 1562
 Delta R.T. -0.006 min
 Lab File: BM035514.D
 Acq: 18 Jun 2022 03:27



Tgt Ion:142 Resp: 818055
 Ion Ratio Lower Upper
 142 100
 141 89.6 70.7 106.1





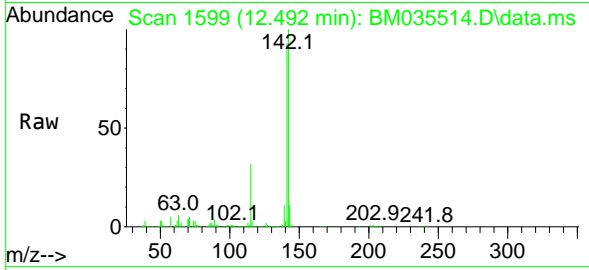
#37
 1-Methylnaphthalene
 Concen: 29.924 ng/uI
 RT: 12.492 min Scan# 11
 Delta R.T. -0.006 min
 Lab File: BM035514.D
 Acq: 18 Jun 2022 03:27

Instrument :

BNA_M

ClientSampleId :

SLCS488

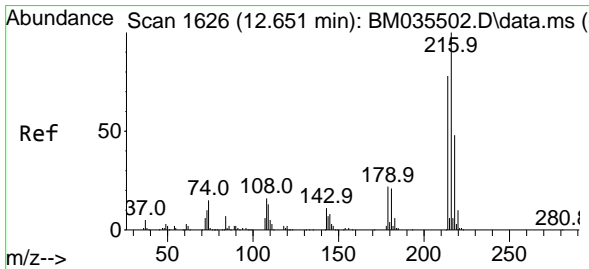
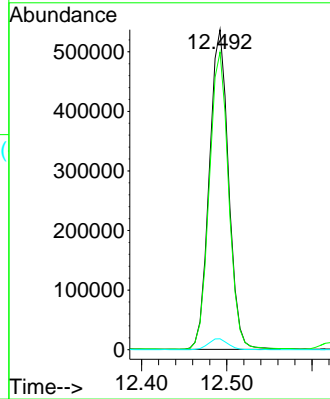
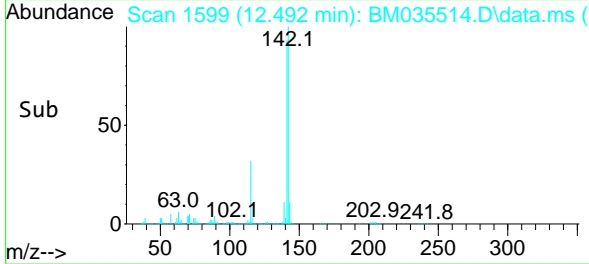


Tgt Ion:142 Resp: 84279
 Ion Ratio Lower Upper
 142 100
 141 93.0 75.2 112.8
 116 3.4 2.6 3.8

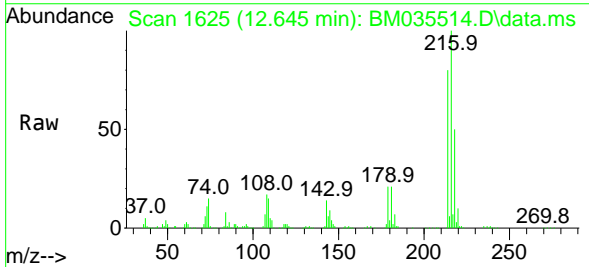
Manual Integrations

APPROVED

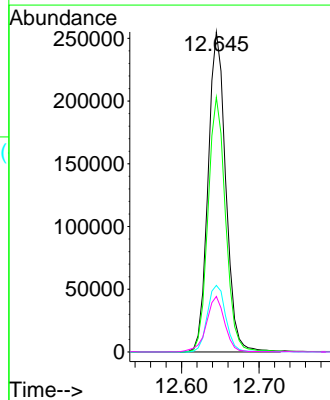
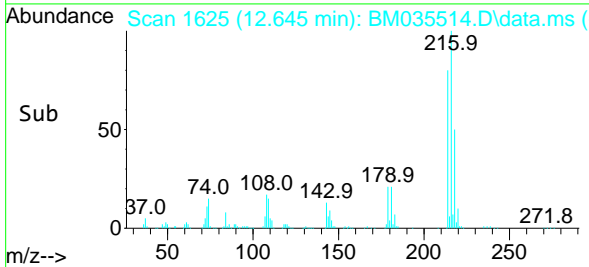
Reviewed By :Jagrut Upadhyay 06/18/2022
 Supervised By :Yogesh Patel 06/22/2022

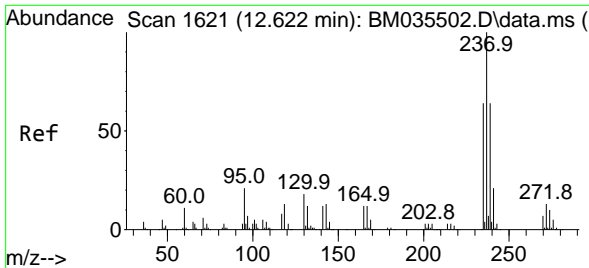


#39
 1,2,4,5-Tetrachlorobenzene
 Concen: 30.120 ng/uI
 RT: 12.645 min Scan# 1625
 Delta R.T. -0.006 min
 Lab File: BM035514.D
 Acq: 18 Jun 2022 03:27



Tgt Ion:216 Resp: 404215
 Ion Ratio Lower Upper
 216 100
 214 79.6 62.4 93.6
 179 20.8 17.3 25.9
 108 17.3 14.0 21.0





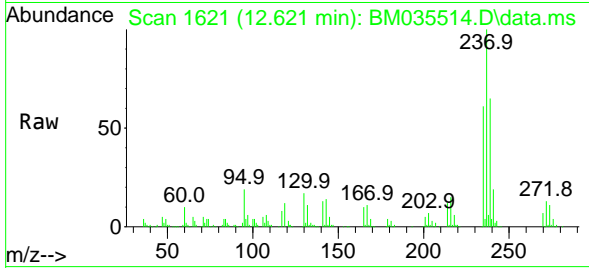
#40
 Hexachlorocyclopentadiene
 Concen: 25.045 ng/uI
 RT: 12.621 min Scan# 10
 Delta R.T. -0.006 min
 Lab File: BM035514.D
 Acq: 18 Jun 2022 03:27

Instrument :

BNA_M

ClientSampleId :

SLCS488

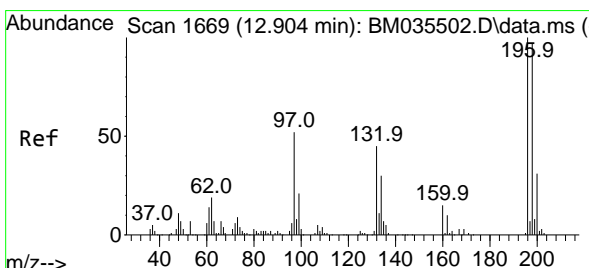
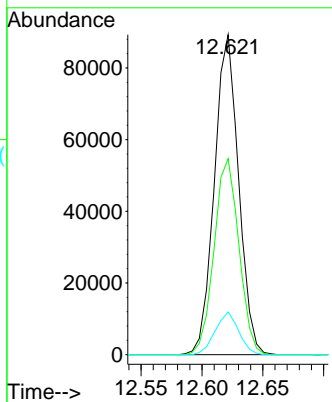
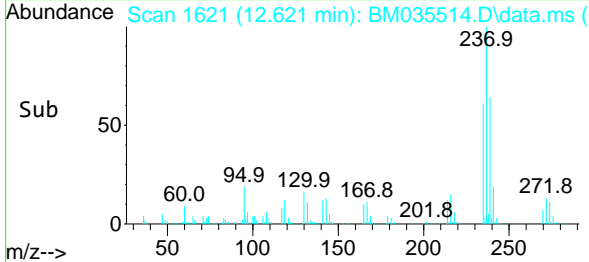


Tgt Ion:237 Resp: 123590
 Ion Ratio Lower Upper
 237 100
 235 61.2 48.4 72.6
 272 13.3 11.6 17.4

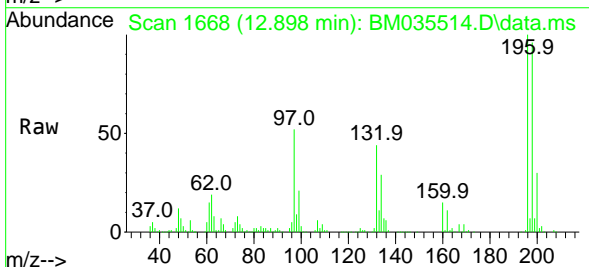
Manual Integrations

APPROVED

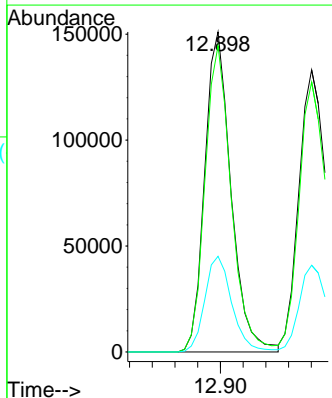
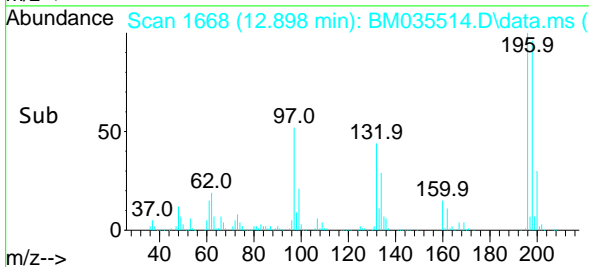
Reviewed By :Jagrut Upadhyay 06/18/2022
 Supervised By :Yogesh Patel 06/22/2022

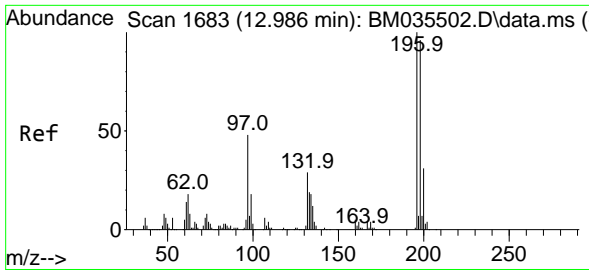


#41
 2,4,6-Trichlorophenol
 Concen: 29.033 ng/uI
 RT: 12.898 min Scan# 1668
 Delta R.T. -0.006 min
 Lab File: BM035514.D
 Acq: 18 Jun 2022 03:27



Tgt Ion:196 Resp: 243024
 Ion Ratio Lower Upper
 196 100
 198 95.7 77.8 116.6
 200 29.9 25.0 37.6





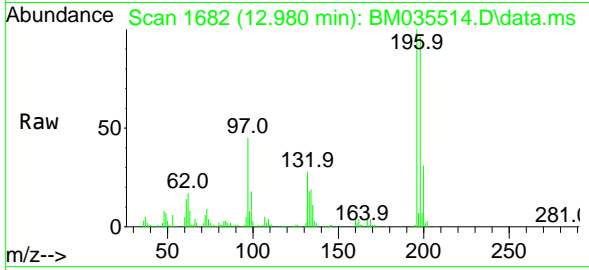
#42
 2,4,5-Trichlorophenol
 Concen: 29.796 ng/uI
 RT: 12.980 min Scan# 1682
 Delta R.T. -0.012 min
 Lab File: BM035514.D
 Acq: 18 Jun 2022 03:27

Instrument :

BNA_M

ClientSampleId :

SLCS488

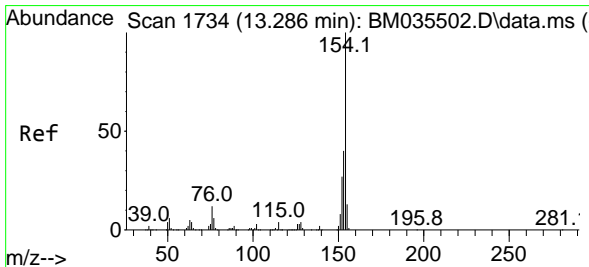
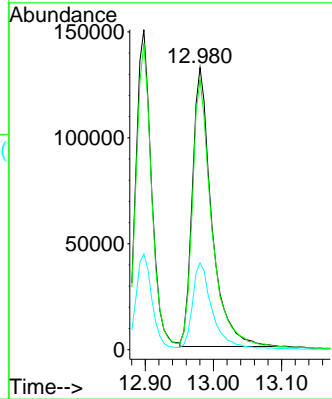
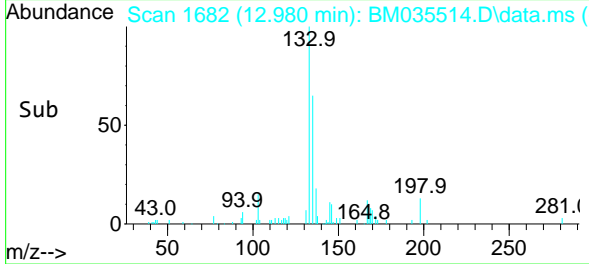


Tgt Ion:196 Resp: 258770
 Ion Ratio Lower Upper
 196 100
 198 95.7 76.8 115.2
 200 30.7 24.9 37.3

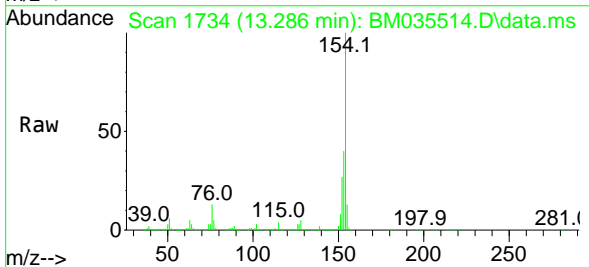
Manual Integrations

APPROVED

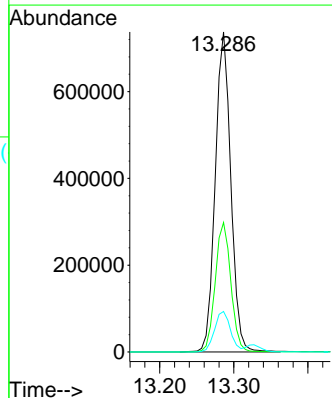
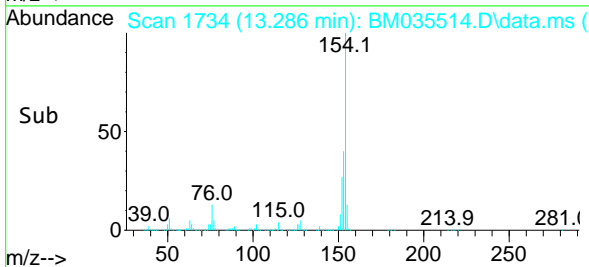
Reviewed By :Jagrut Upadhyay 06/18/2022
 Supervised By :Yogesh Patel 06/22/2022

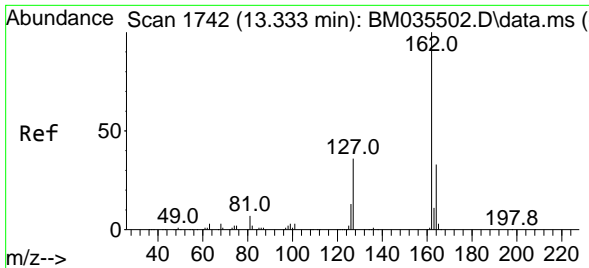


#43
 1,1'-Biphenyl
 Concen: 30.015 ng/uI
 RT: 13.286 min Scan# 1734
 Delta R.T. -0.006 min
 Lab File: BM035514.D
 Acq: 18 Jun 2022 03:27



Tgt Ion:154 Resp: 1075739
 Ion Ratio Lower Upper
 154 100
 153 40.5 32.4 48.6
 76 12.7 10.1 15.1





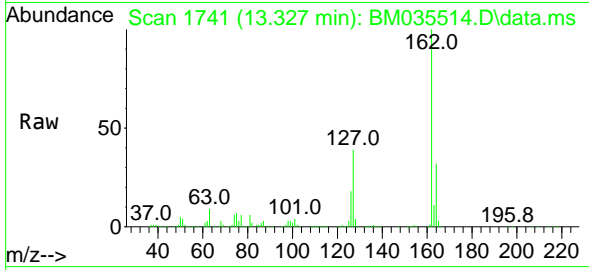
#44
 2-Chloronaphthalene
 Concen: 30.530 ng/u1
 RT: 13.327 min Scan# 1741
 Delta R.T. -0.006 min
 Lab File: BM035514.D
 Acq: 18 Jun 2022 03:27

Instrument :

BNA_M

ClientSampleId :

SLCS488

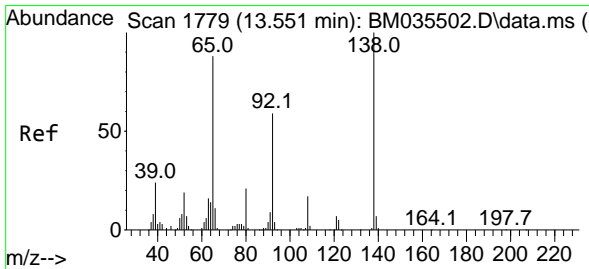
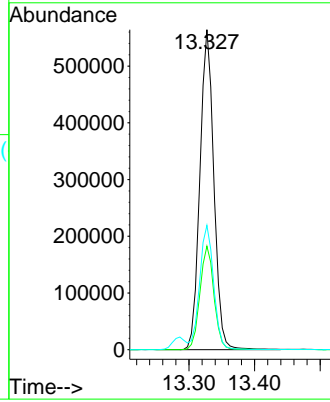
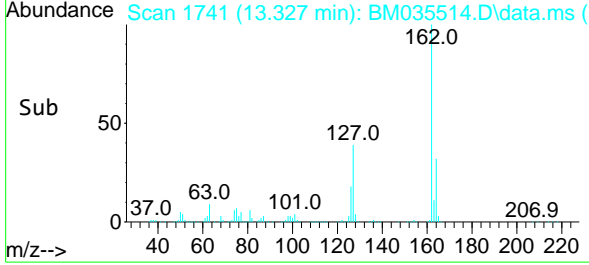


Tgt Ion:162 Resp: 836210
 Ion Ratio Lower Upper
 162 100
 164 32.3 25.4 38.0
 127 38.9 31.6 47.4

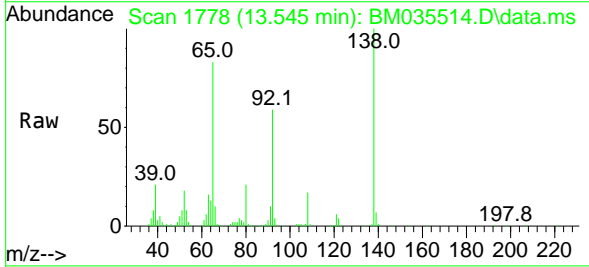
Manual Integrations

APPROVED

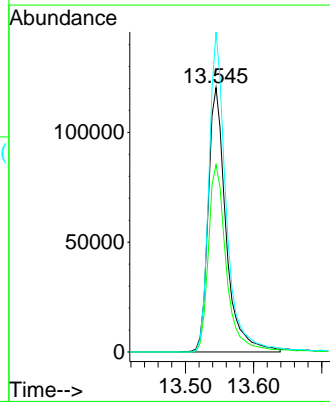
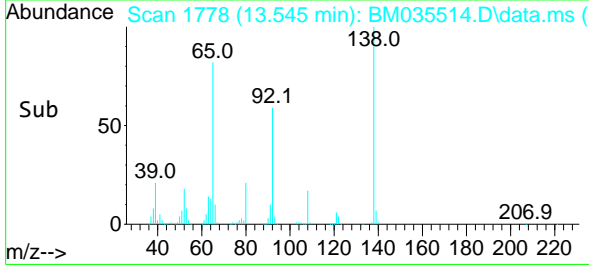
Reviewed By :Jagrut Upadhyay 06/18/2022
 Supervised By :Yogesh Patel 06/22/2022

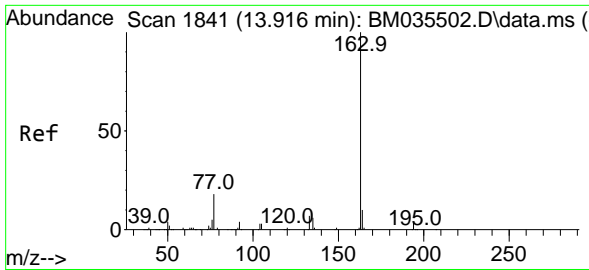


#45
 2-Nitroaniline
 Concen: 31.071 ng/u1
 RT: 13.545 min Scan# 1778
 Delta R.T. -0.006 min
 Lab File: BM035514.D
 Acq: 18 Jun 2022 03:27



Tgt Ion: 65 Resp: 219409
 Ion Ratio Lower Upper
 65 100
 92 70.8 54.5 81.7
 138 121.0 91.2 136.8





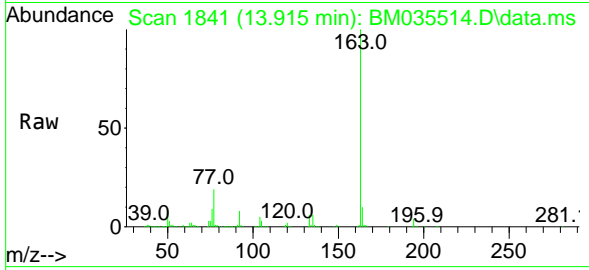
#47
 Dimethylphthalate
 Concen: 30.732 ng/ul
 RT: 13.915 min Scan# 1841
 Delta R.T. -0.006 min
 Lab File: BM035514.D
 Acq: 18 Jun 2022 03:27

Instrument :

BNA_M

ClientSampleId :

SLCS488

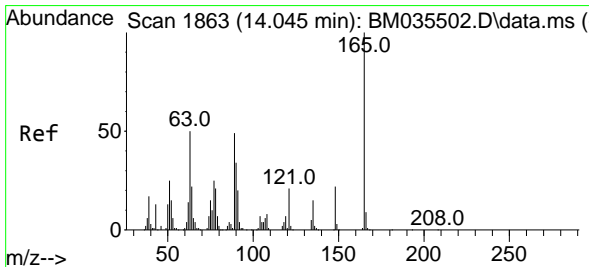
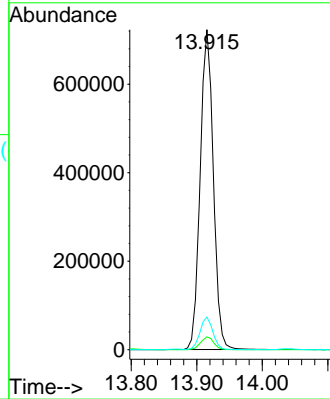
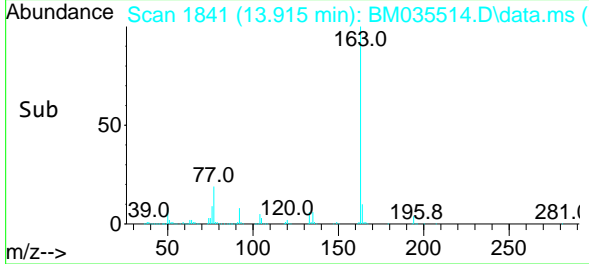


Tgt Ion:163 Resp: 101039
 Ion Ratio Lower Upper
 163 100
 194 4.0 3.2 4.8
 164 10.2 7.9 11.9

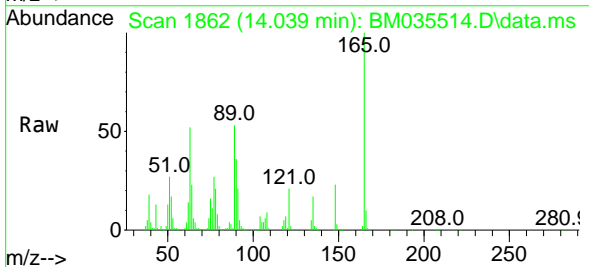
Manual Integrations

APPROVED

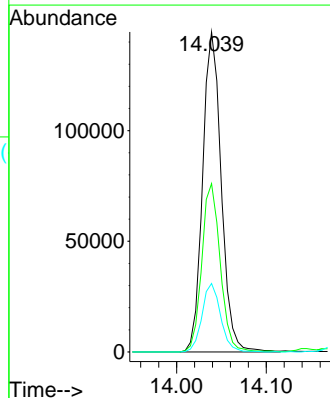
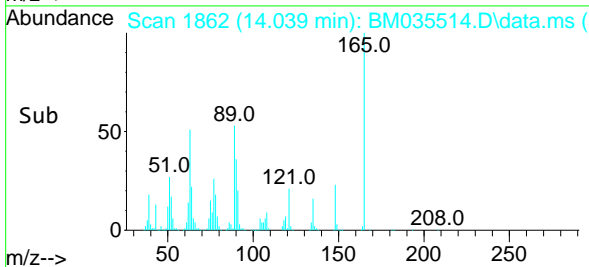
Reviewed By :Jagrut Upadhyay 06/18/2022
 Supervised By :Yogesh Patel 06/22/2022

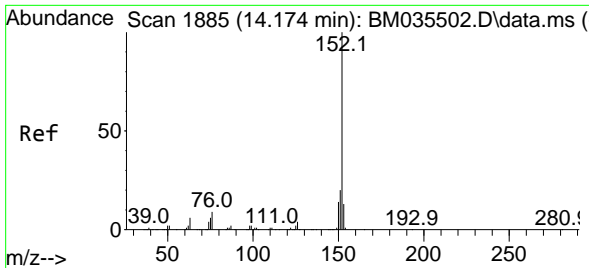


#48
 2,6-Dinitrotoluene
 Concen: 32.105 ng/ul
 RT: 14.039 min Scan# 1862
 Delta R.T. -0.006 min
 Lab File: BM035514.D
 Acq: 18 Jun 2022 03:27



Tgt Ion:165 Resp: 208683
 Ion Ratio Lower Upper
 165 100
 89 52.6 42.5 63.7
 121 21.4 17.2 25.8





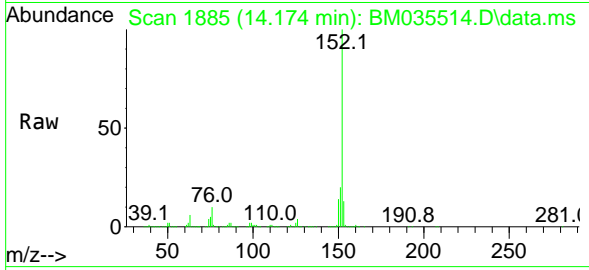
#50
 Acenaphthylene
 Concen: 30.345 ng/uI
 RT: 14.174 min Scan# 1885
 Delta R.T. -0.000 min
 Lab File: BM035514.D
 Acq: 18 Jun 2022 03:27

Instrument :

BNA_M

Client Sample Id :

SLCS488

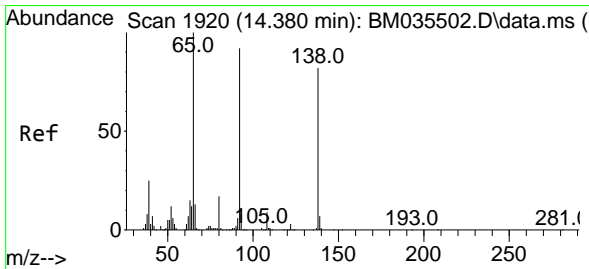
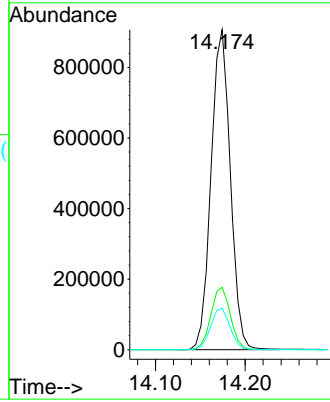
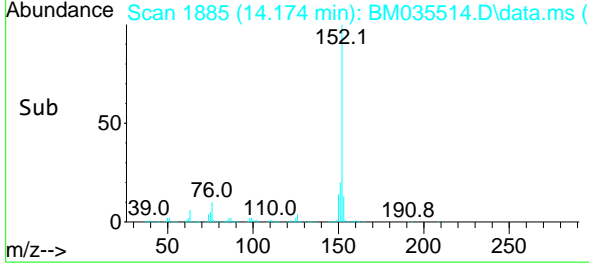


Tgt Ion:152 Resp: 135244
 Ion Ratio Lower Upper
 152 100
 151 19.5 16.1 24.1
 153 13.0 10.6 15.8

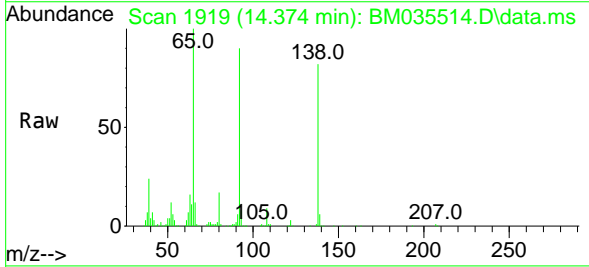
Manual Integrations

APPROVED

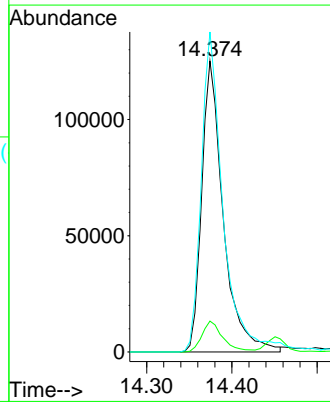
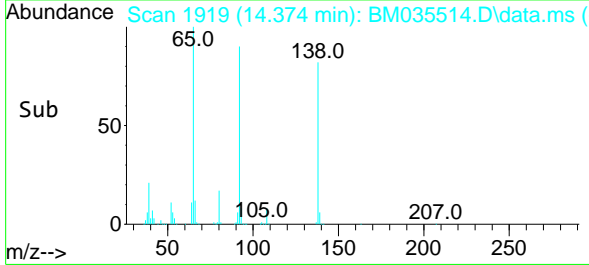
Reviewed By :Jagrut Upadhyay 06/18/2022
 Supervised By :Yogesh Patel 06/22/2022

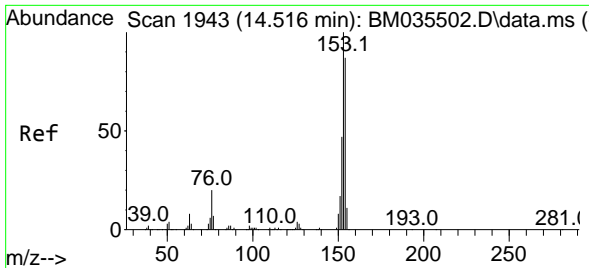


#51
 3-Nitroaniline
 Concen: 33.051 ng/uI
 RT: 14.374 min Scan# 1919
 Delta R.T. -0.006 min
 Lab File: BM035514.D
 Acq: 18 Jun 2022 03:27



Tgt Ion:138 Resp: 220124
 Ion Ratio Lower Upper
 138 100
 108 10.6 8.1 12.1
 92 110.0 90.4 135.6





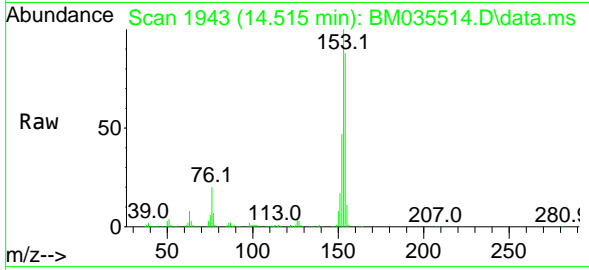
#52
 Acenaphthene
 Concen: 29.918 ng/uI
 RT: 14.515 min Scan# 1943
 Delta R.T. -0.006 min
 Lab File: BM035514.D
 Acq: 18 Jun 2022 03:27

Instrument :

BNA_M

Client SampleId :

SLCS488

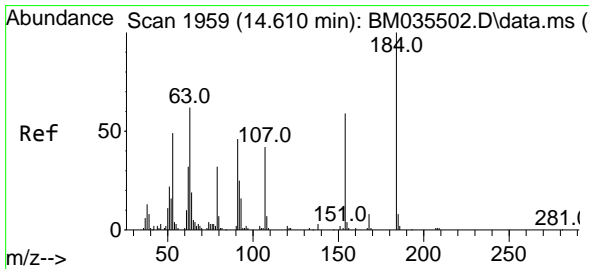
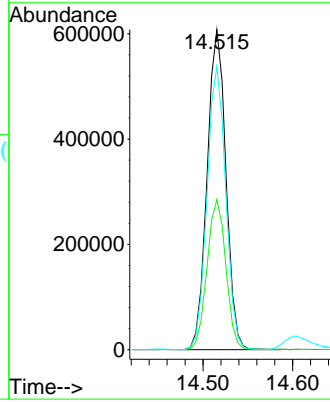
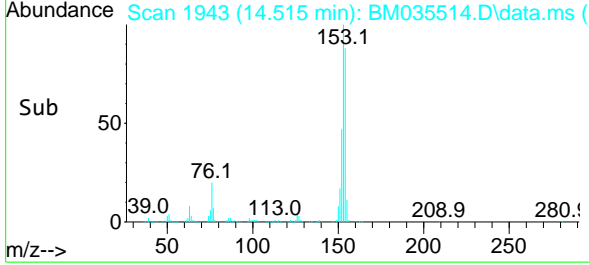


Tgt Ion:153 Resp: 884544
 Ion Ratio Lower Upper
 153 100
 152 46.9 37.1 55.7
 154 88.4 71.3 106.9

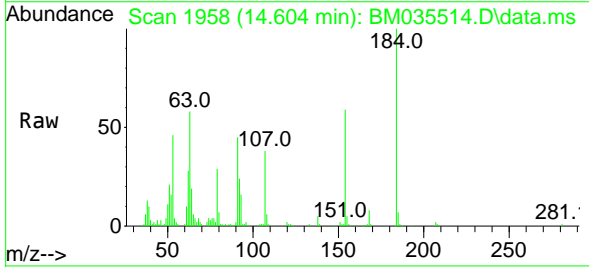
Manual Integrations

APPROVED

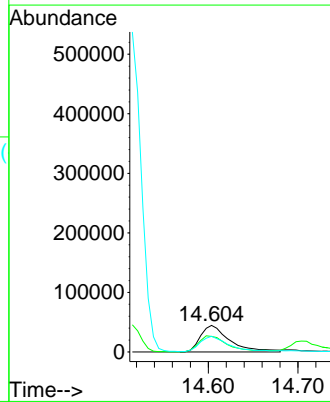
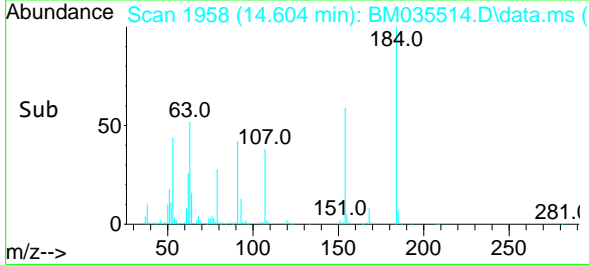
Reviewed By :Jagrut Upadhyay 06/18/2022
 Supervised By :Yogesh Patel 06/22/2022

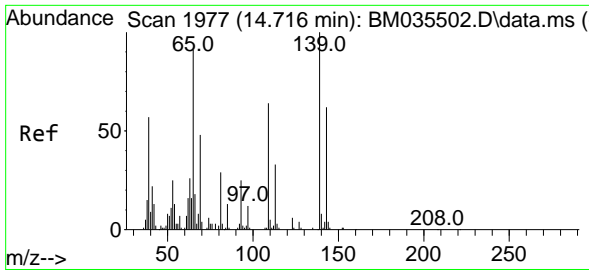


#53
 2,4-Dinitrophenol
 Concen: 28.136 ng/uI
 RT: 14.604 min Scan# 1958
 Delta R.T. -0.006 min
 Lab File: BM035514.D
 Acq: 18 Jun 2022 03:27



Tgt Ion:184 Resp: 100783
 Ion Ratio Lower Upper
 184 100
 63 58.4 54.2 81.4
 154 58.9 49.3 73.9





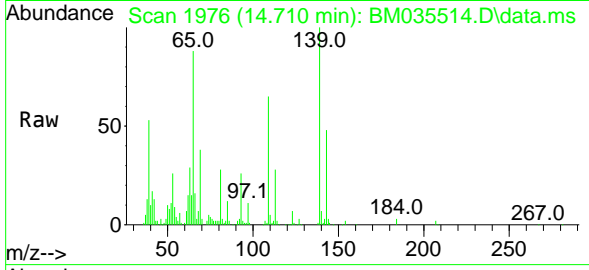
#55
 4-Nitrophenol
 Concen: 29.309 ng/u1
 RT: 14.710 min Scan# 1976
 Delta R.T. -0.006 min
 Lab File: BM035514.D
 Acq: 18 Jun 2022 03:27

Instrument :

BNA_M

ClientSampleId :

SLCS488

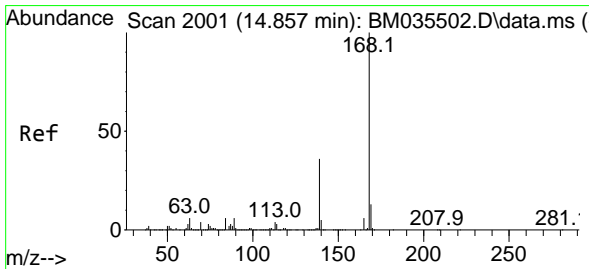
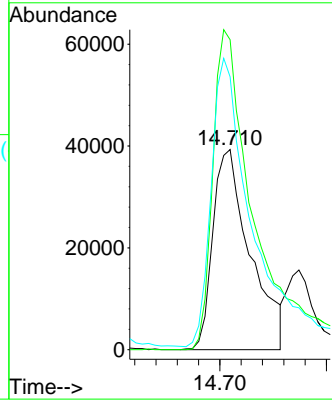
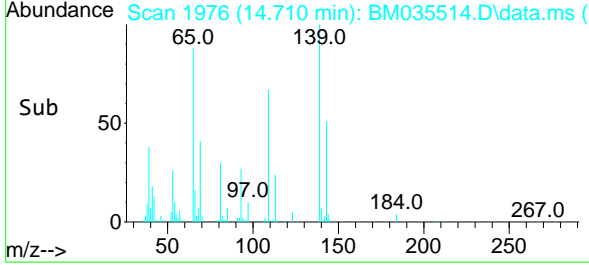


Tgt Ion:109 Resp: 9538
 Ion Ratio Lower Upper
 109 100
 139 154.8 124.9 187.3
 65 136.3 122.2 183.4

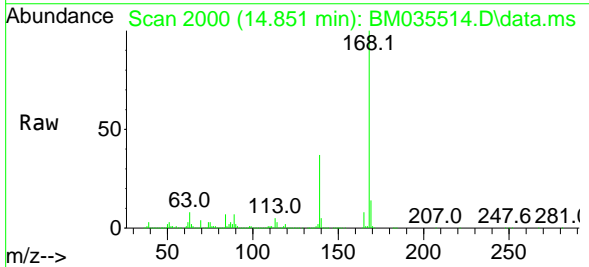
Manual Integrations

APPROVED

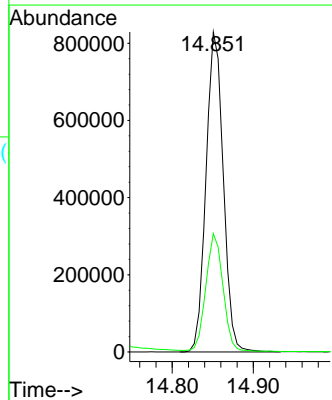
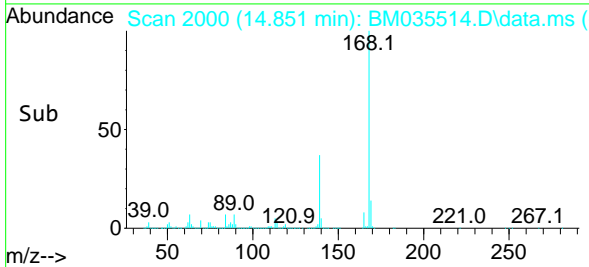
Reviewed By :Jagrut Upadhyay 06/18/2022
 Supervised By :Yogesh Patel 06/22/2022

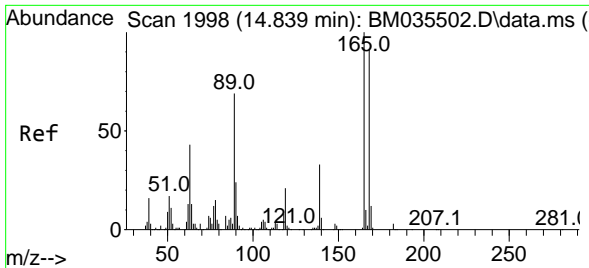


#56
 Dibenzofuran
 Concen: 30.221 ng/u1
 RT: 14.851 min Scan# 2000
 Delta R.T. -0.006 min
 Lab File: BM035514.D
 Acq: 18 Jun 2022 03:27



Tgt Ion:168 Resp: 1222868
 Ion Ratio Lower Upper
 168 100
 139 37.0 30.1 45.1





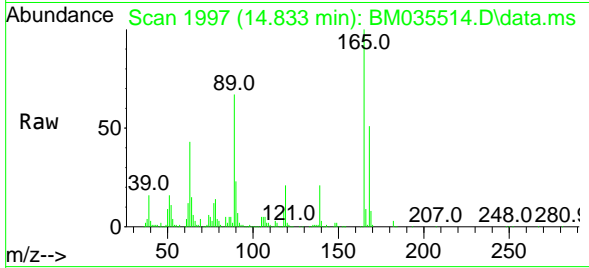
#57
 2,4-Dinitrotoluene
 Concen: 32.565 ng/ul
 RT: 14.833 min Scan# 1997
 Delta R.T. -0.006 min
 Lab File: BM035514.D
 Acq: 18 Jun 2022 03:27

Instrument :

BNA_M

Client Sample Id :

SLCS488

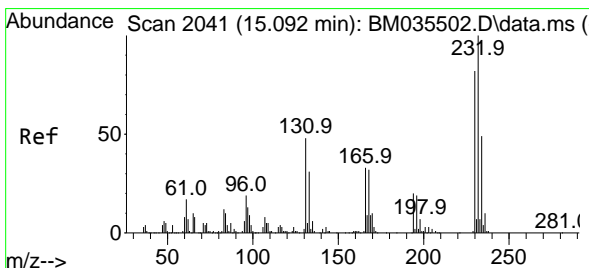
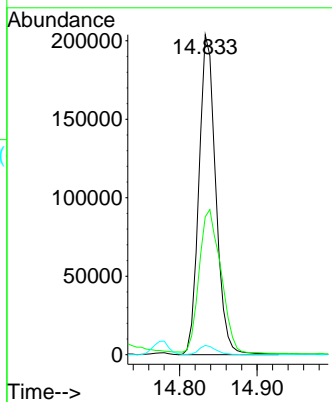
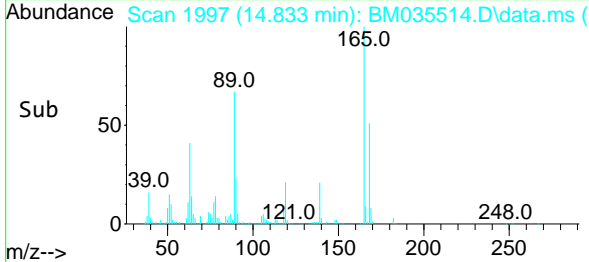


Tgt Ion:165 Resp: 30735
 Ion Ratio Lower Upper
 165 100
 63 43.1 35.9 53.9
 182 2.9 2.5 3.7

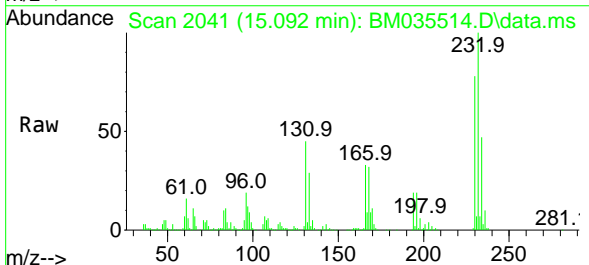
Manual Integrations

APPROVED

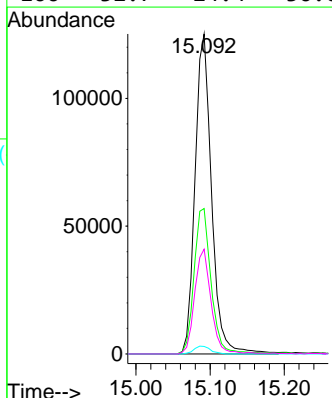
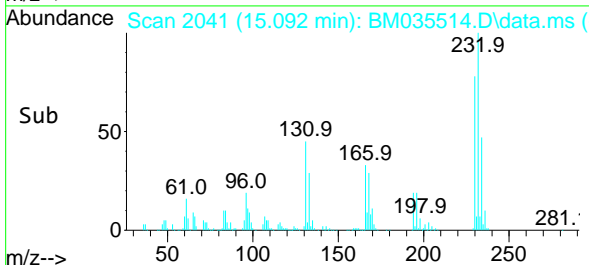
Reviewed By :Jagrut Upadhyay 06/18/2022
 Supervised By :Yogesh Patel 06/22/2022

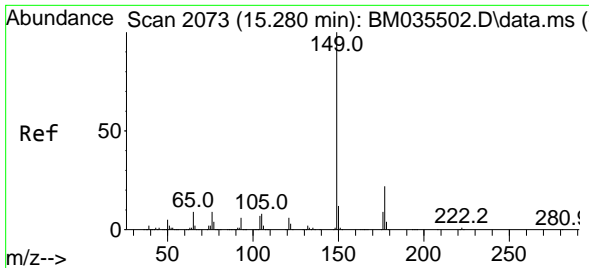


#58
 2,3,4,6-Tetrachlorophenol
 Concen: 27.098 ng/ul
 RT: 15.092 min Scan# 2041
 Delta R.T. -0.006 min
 Lab File: BM035514.D
 Acq: 18 Jun 2022 03:27



Tgt Ion:232 Resp: 194381
 Ion Ratio Lower Upper
 232 100
 131 45.5 36.7 55.1
 130 2.3 1.7 2.5
 166 32.7 24.4 36.6





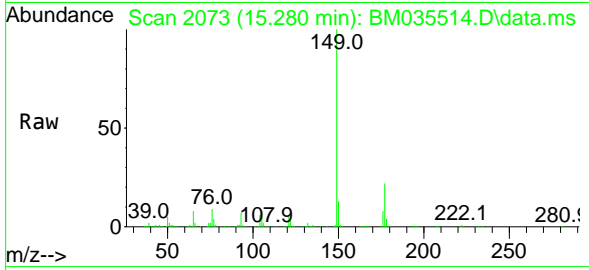
#59
 Diethylphthalate
 Concen: 30.548 ng/u1
 RT: 15.280 min Scan# 2073
 Delta R.T. -0.000 min
 Lab File: BM035514.D
 Acq: 18 Jun 2022 03:27

Instrument :

BNA_M

ClientSampleId :

SLCS488

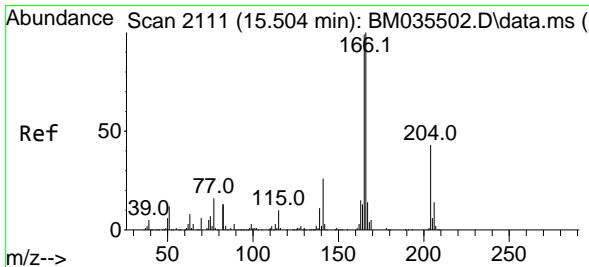
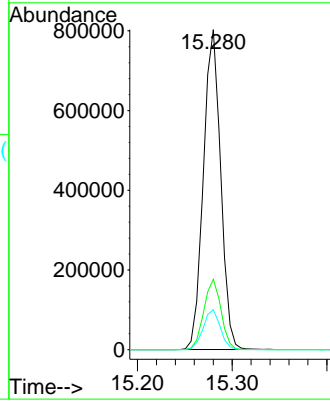
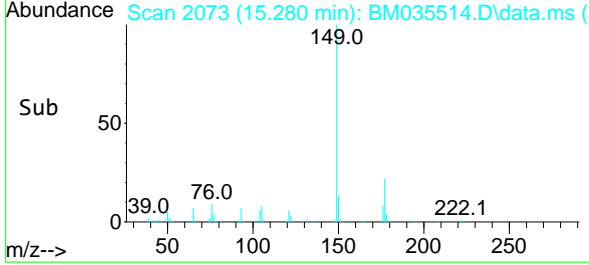


Tgt Ion:149 Resp: 101767
 Ion Ratio Lower Upper
 149 100
 177 22.0 16.8 25.2
 150 12.5 10.2 15.4

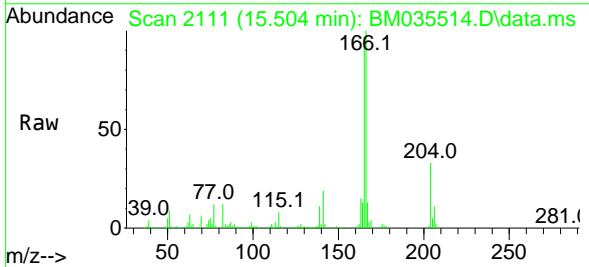
Manual Integrations

APPROVED

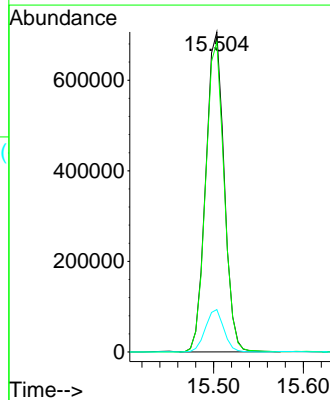
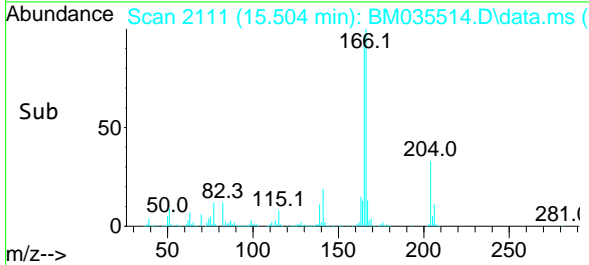
Reviewed By :Jagrut Upadhyay 06/18/2022
 Supervised By :Yogesh Patel 06/22/2022

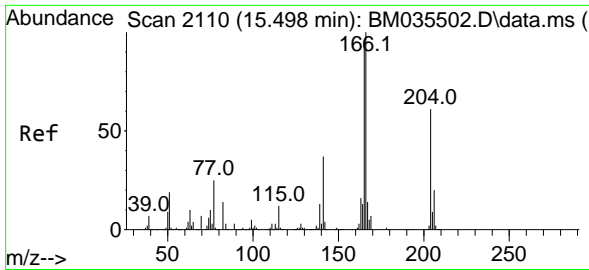


#61
 Fluorene
 Concen: 30.589 ng/u1
 RT: 15.504 min Scan# 2111
 Delta R.T. -0.000 min
 Lab File: BM035514.D
 Acq: 18 Jun 2022 03:27



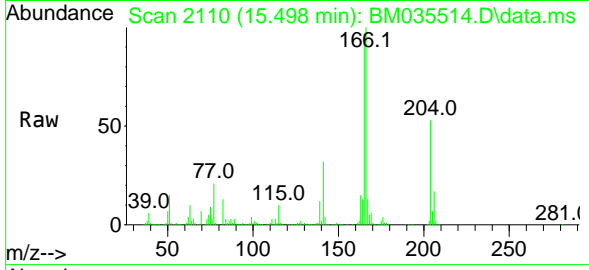
Tgt Ion:166 Resp: 1005208
 Ion Ratio Lower Upper
 166 100
 165 96.9 77.2 115.8
 167 13.3 11.0 16.4





#62
 4-Chlorophenyl-phenylether
 Concen: 30.632 ng/ul
 RT: 15.498 min Scan# 2110
 Delta R.T. -0.000 min
 Lab File: BM035514.D
 Acq: 18 Jun 2022 03:27

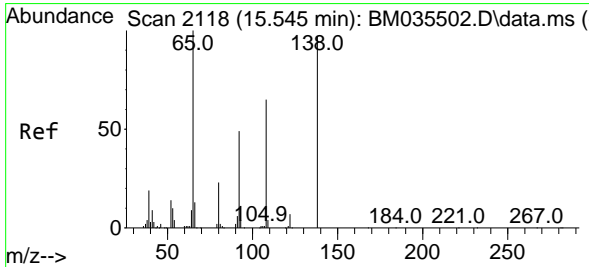
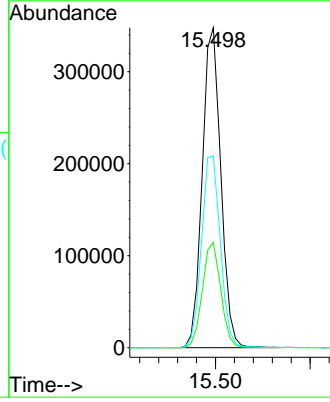
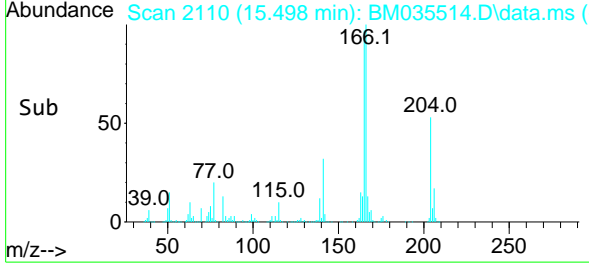
Instrument :
 BNA_M
 ClientSampleId :
 SLCS488



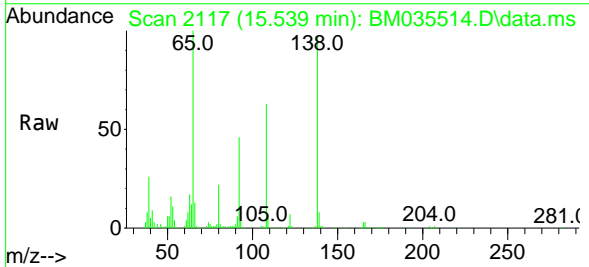
Tgt Ion:204 Resp: 47245
 Ion Ratio Lower Upper
 204 100
 206 32.9 25.9 38.9
 141 60.0 50.6 75.8

Manual Integrations
 APPROVED

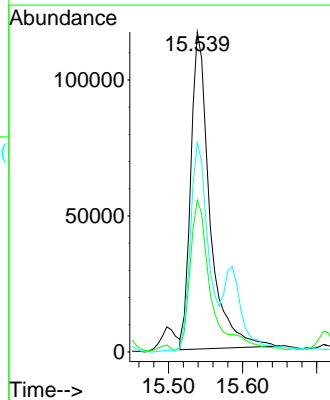
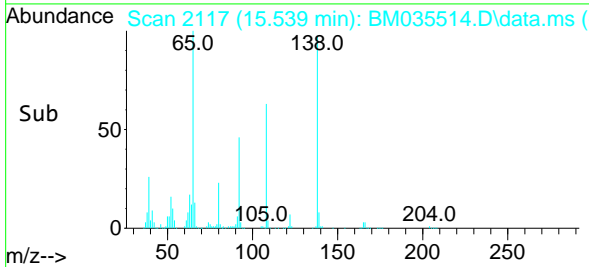
Reviewed By :Jagrut Upadhyay 06/18/2022
 Supervised By :Yogesh Patel 06/22/2022

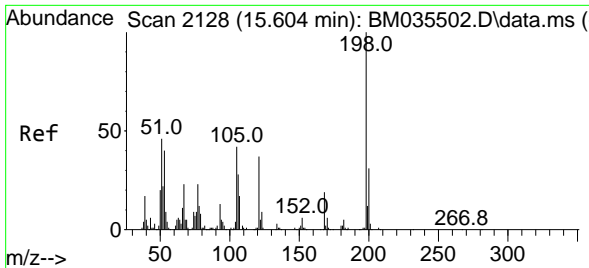


#63
 4-Nitroaniline
 Concen: 34.979 ng/ul
 RT: 15.539 min Scan# 2117
 Delta R.T. -0.006 min
 Lab File: BM035514.D
 Acq: 18 Jun 2022 03:27



Tgt Ion:138 Resp: 208100
 Ion Ratio Lower Upper
 138 100
 92 47.5 39.2 58.8
 108 65.3 51.6 77.4





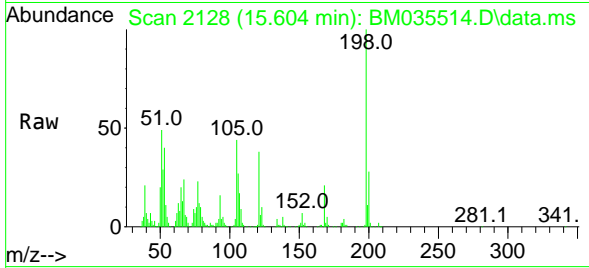
#66
 4,6-Dinitro-2-methylphenol
 Concen: 30.241 ng/ul
 RT: 15.604 min Scan# 2128
 Delta R.T. -0.000 min
 Lab File: BM035514.D
 Acq: 18 Jun 2022 03:27

Instrument :

BNA_M

ClientSampleId :

SLCS488

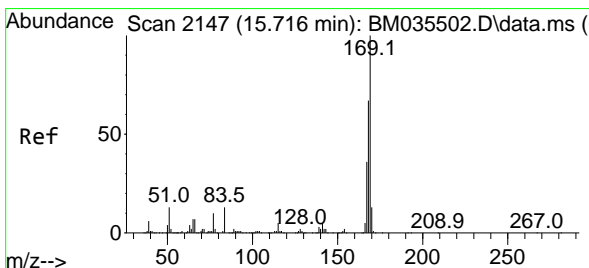
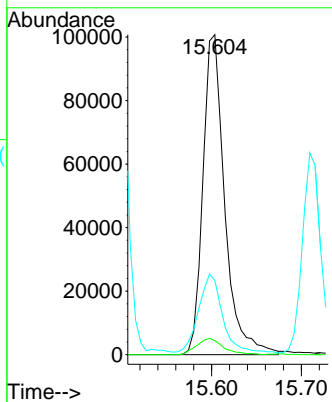
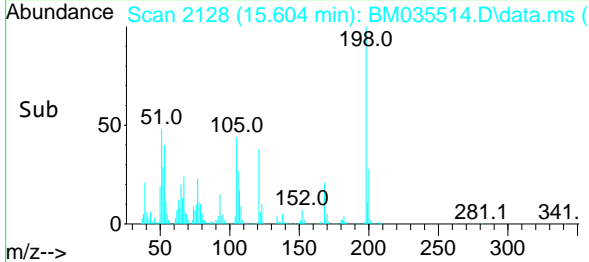


Tgt Ion:198 Resp: 169969
 Ion Ratio Lower Upper
 198 100
 182 4.4 4.2 6.4
 77 23.2 19.9 29.9

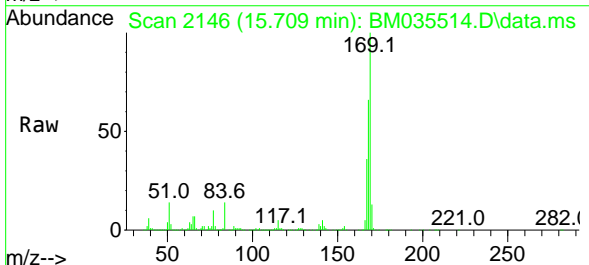
Manual Integrations

APPROVED

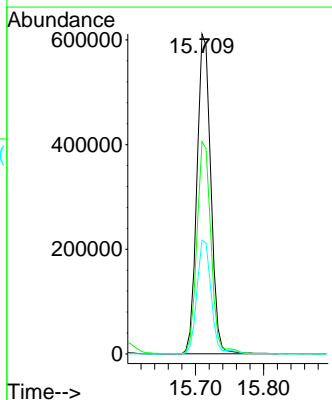
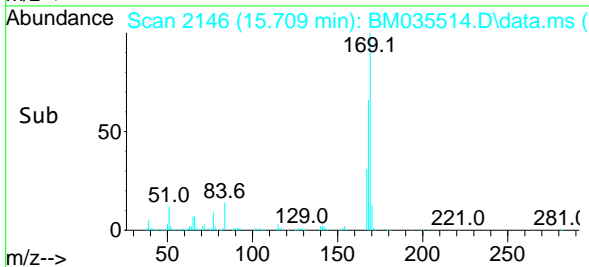
Reviewed By :Jagrut Upadhyay 06/18/2022
 Supervised By :Yogesh Patel 06/22/2022

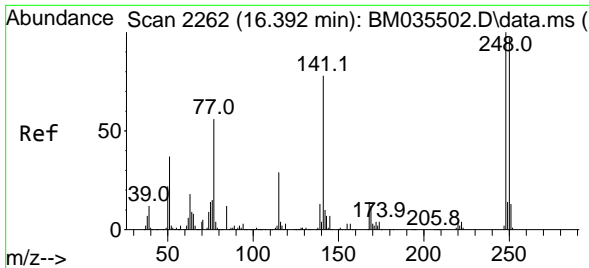


#67
 N-Nitrosodiphenylamine
 Concen: 31.194 ng/ul
 RT: 15.709 min Scan# 2146
 Delta R.T. -0.006 min
 Lab File: BM035514.D
 Acq: 18 Jun 2022 03:27



Tgt Ion:169 Resp: 864955
 Ion Ratio Lower Upper
 169 100
 168 66.4 53.8 80.6
 167 35.6 28.7 43.1





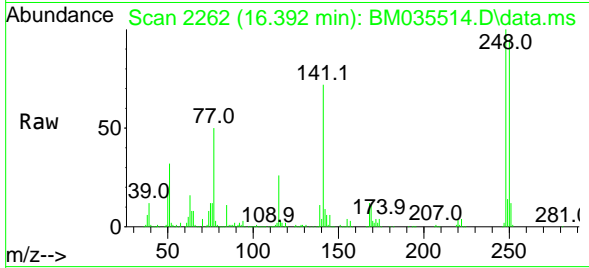
#68
 4-Bromophenyl-phenylether
 Concen: 31.017 ng/ul
 RT: 16.392 min Scan# 21
 Delta R.T. -0.000 min
 Lab File: BM035514.D
 Acq: 18 Jun 2022 03:27

Instrument :

BNA_M

ClientSampled :

SLCS488

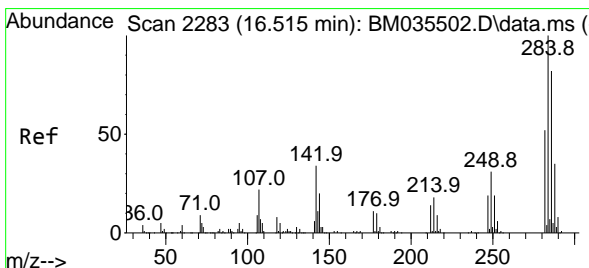
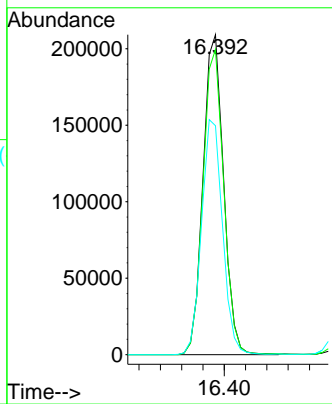
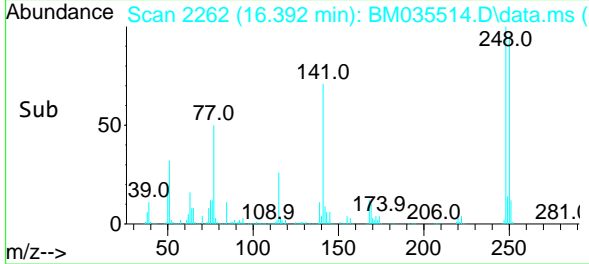


Tgt Ion:248 Resp: 28178
 Ion Ratio Lower Upper
 248 100
 250 95.4 77.3 115.9
 141 71.6 59.8 89.8

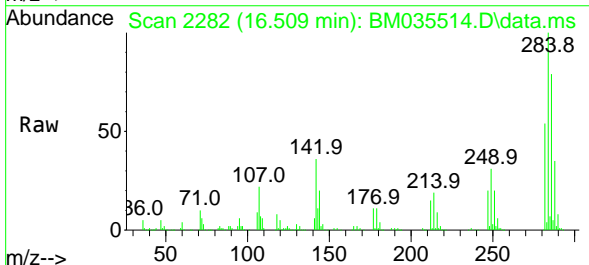
Manual Integrations

APPROVED

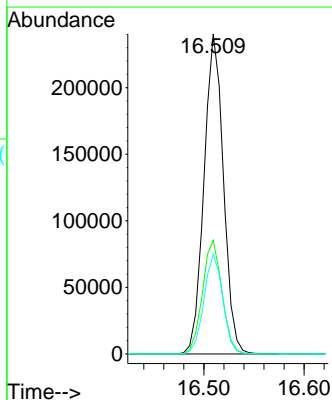
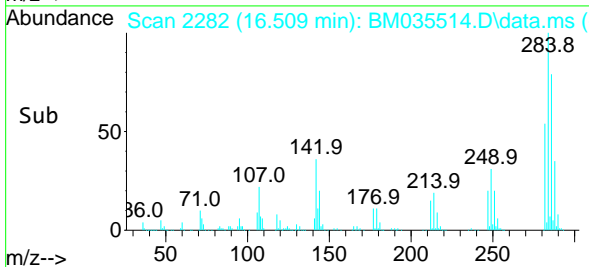
Reviewed By :Jagrut Upadhyay 06/18/2022
 Supervised By :Yogesh Patel 06/22/2022

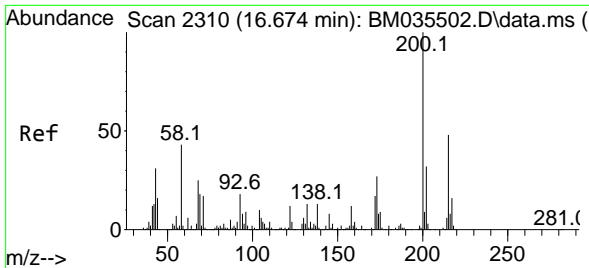


#69
 Hexachlorobenzene
 Concen: 30.830 ng/ul
 RT: 16.509 min Scan# 2282
 Delta R.T. -0.006 min
 Lab File: BM035514.D
 Acq: 18 Jun 2022 03:27



Tgt Ion:284 Resp: 324043
 Ion Ratio Lower Upper
 284 100
 142 35.5 28.6 42.8
 249 31.2 24.6 37.0





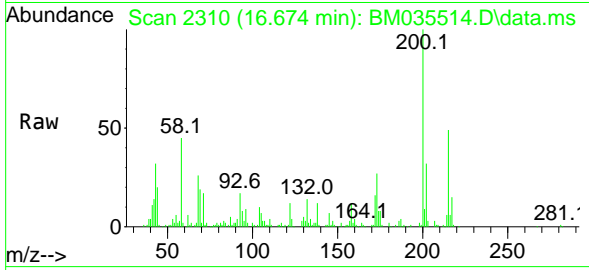
#70
 Atrazine
 Concen: 7.106 ng/u1
 RT: 16.674 min Scan# 2310
 Delta R.T. -0.000 min
 Lab File: BM035514.D
 Acq: 18 Jun 2022 03:27

Instrument :

BNA_M

ClientSampleId :

SLCS488

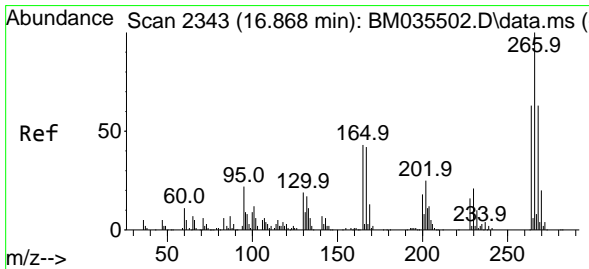
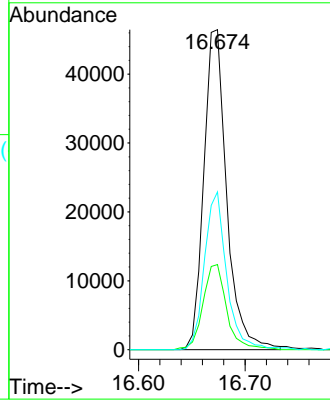
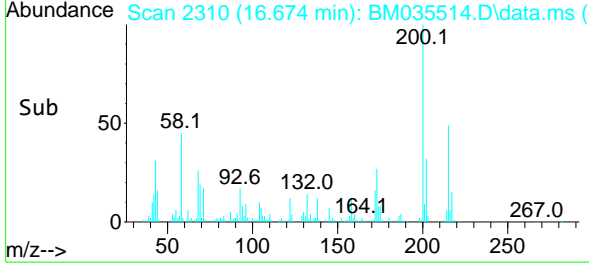


Tgt Ion:200 Resp: 69572
 Ion Ratio Lower Upper
 200 100
 173 26.6 21.3 31.9
 215 49.3 39.0 58.6

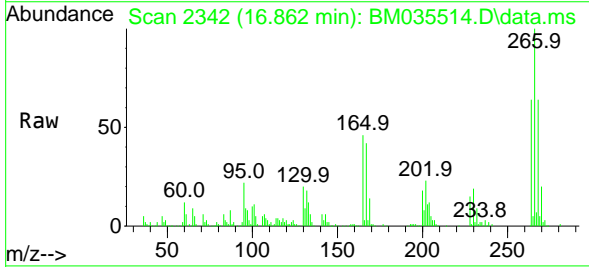
Manual Integrations

APPROVED

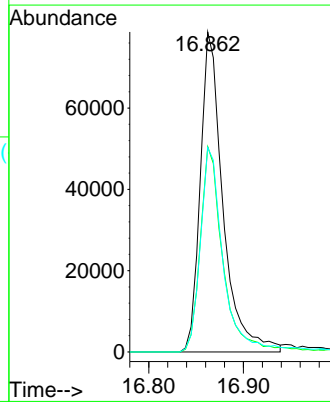
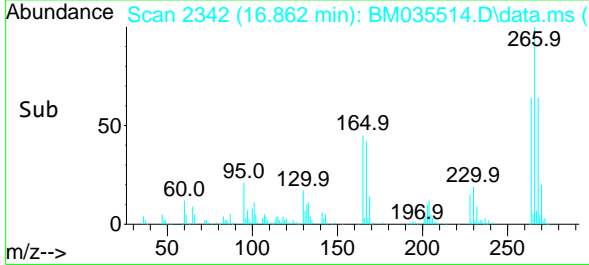
Reviewed By :Jagrut Upadhyay 06/18/2022
 Supervised By :Yogesh Patel 06/22/2022

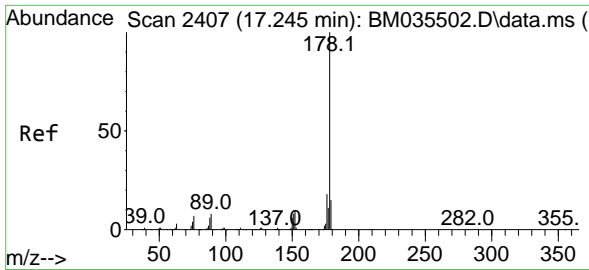


#71
 Pentachlorophenol
 Concen: 23.677 ng/u1
 RT: 16.862 min Scan# 2342
 Delta R.T. -0.012 min
 Lab File: BM035514.D
 Acq: 18 Jun 2022 03:27



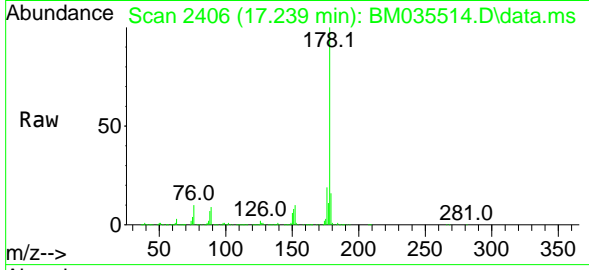
Tgt Ion:266 Resp: 131196
 Ion Ratio Lower Upper
 266 100
 264 64.2 49.5 74.3
 268 63.9 51.0 76.4





#72
 Phenanthrene
 Concen: 30.768 ng/u1
 RT: 17.239 min Scan# 2406
 Delta R.T. -0.006 min
 Lab File: BM035514.D
 Acq: 18 Jun 2022 03:27

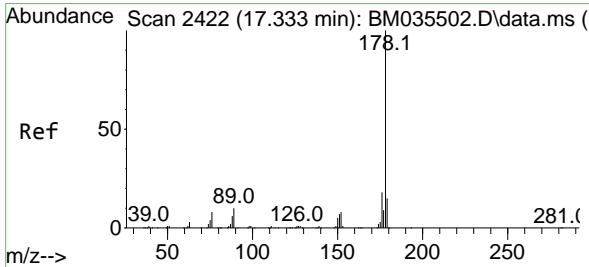
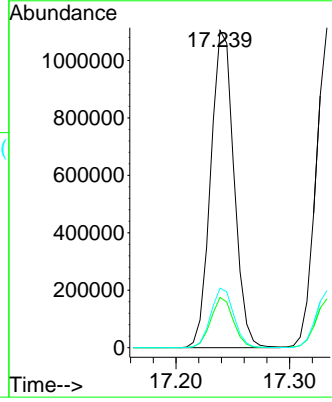
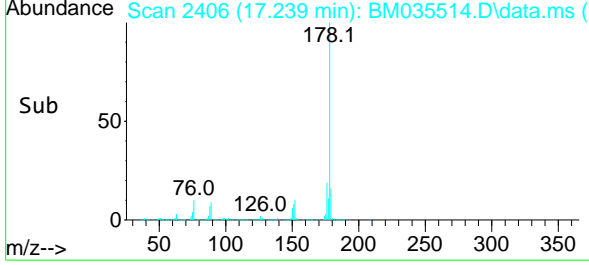
Instrument :
 BNA_M
 ClientSampleId :
 SLCS488



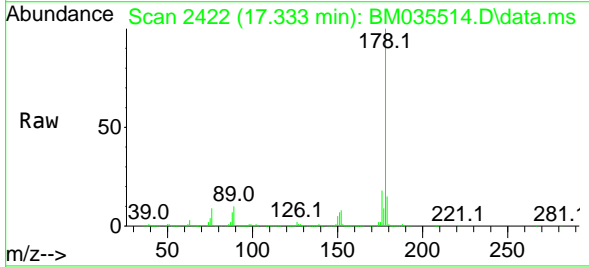
Tgt Ion:178 Resp: 156946
 Ion Ratio Lower Upper
 178 100
 179 15.8 12.2 18.2
 176 18.8 14.9 22.3

Manual Integrations
 APPROVED

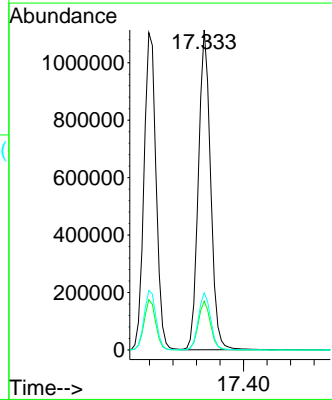
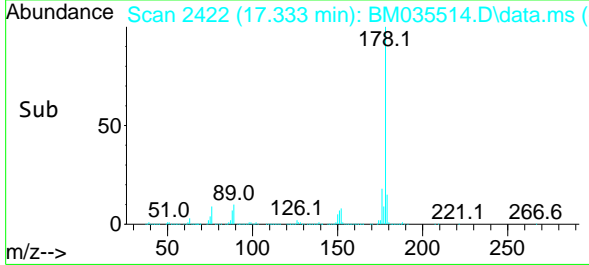
Reviewed By :Jagrut Upadhyay 06/18/2022
 Supervised By :Yogesh Patel 06/22/2022

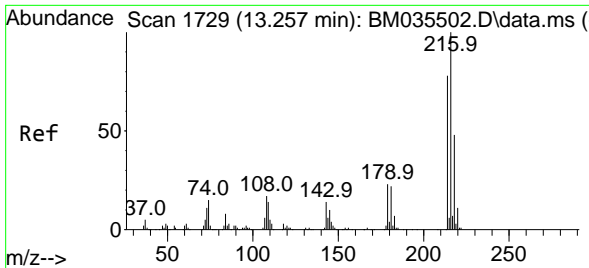


#74
 Anthracene
 Concen: 30.652 ng/u1
 RT: 17.333 min Scan# 2422
 Delta R.T. -0.006 min
 Lab File: BM035514.D
 Acq: 18 Jun 2022 03:27



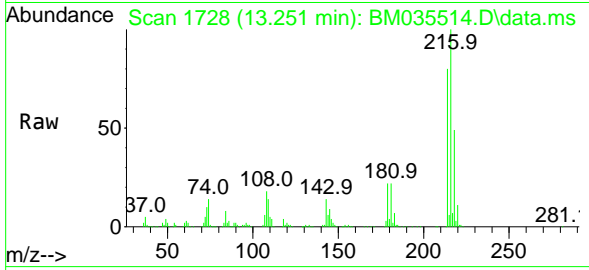
Tgt Ion:178 Resp: 1599827
 Ion Ratio Lower Upper
 178 100
 179 15.3 12.2 18.2
 176 17.8 14.4 21.6





#75
 1,2,3,4-Tetrachlorobenzene
 Concen: 29.310 ng/uL
 RT: 13.251 min Scan# 1728
 Delta R.T. -0.006 min
 Lab File: BM035514.D
 Acq: 18 Jun 2022 03:27

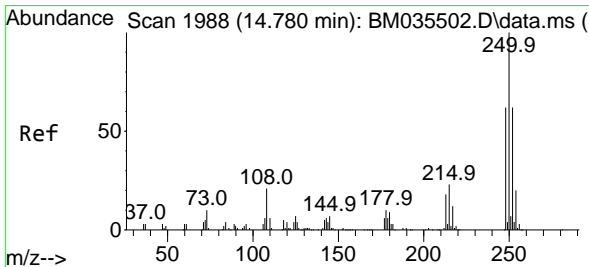
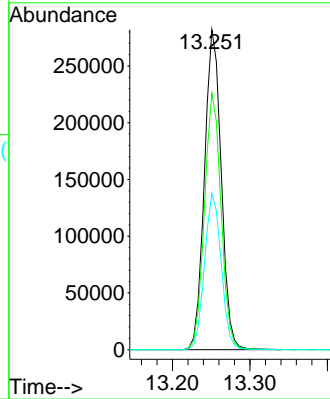
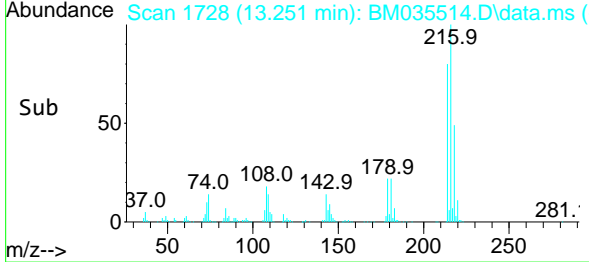
Instrument : BNA_M
 ClientSampleId : SLCS488



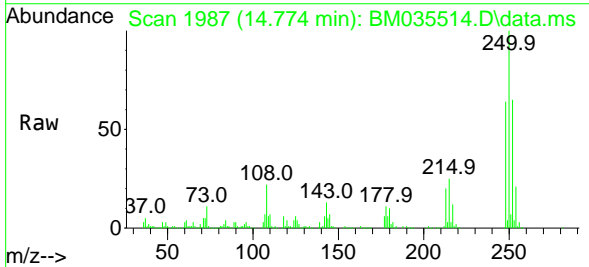
Tgt Ion:216 Resp: 42385
 Ion Ratio Lower Upper
 216 100
 214 80.2 60.9 91.3
 218 48.8 37.5 56.3

Manual Integrations
 APPROVED

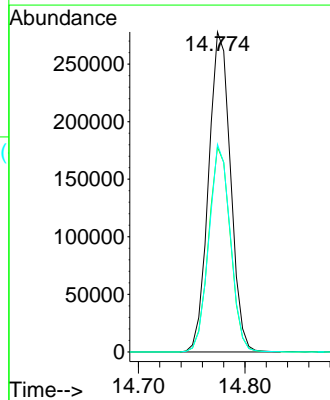
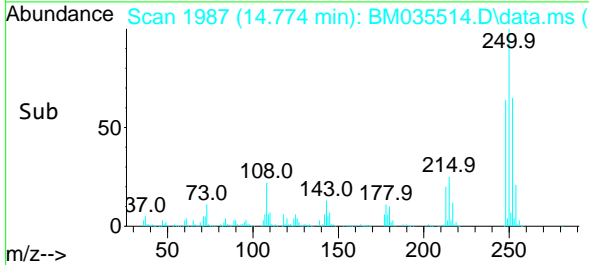
Reviewed By :Jagrut Upadhyay 06/18/2022
 Supervised By :Yogesh Patel 06/22/2022

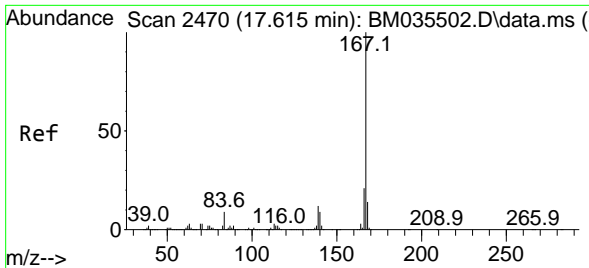


#76
 Pentachlorobenzene
 Concen: 30.917 ng/uL
 RT: 14.774 min Scan# 1987
 Delta R.T. -0.006 min
 Lab File: BM035514.D
 Acq: 18 Jun 2022 03:27



Tgt Ion:250 Resp: 397518
 Ion Ratio Lower Upper
 250 100
 248 64.0 50.4 75.6
 252 64.9 51.1 76.7





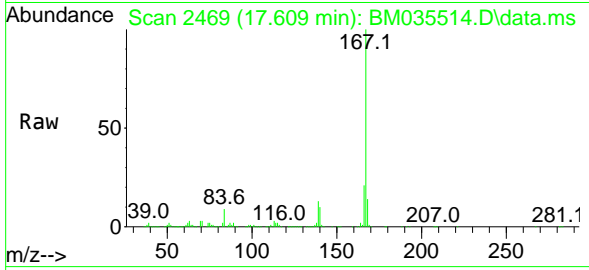
#77
 Carbazole
 Concen: 31.101 ng/uI
 RT: 17.609 min Scan# 2470
 Delta R.T. -0.006 min
 Lab File: BM035514.D
 Acq: 18 Jun 2022 03:27

Instrument :

BNA_M

ClientSampleId :

SLCS488

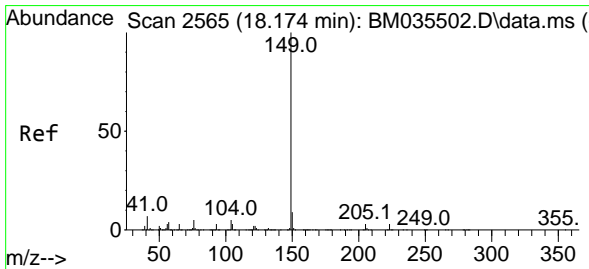
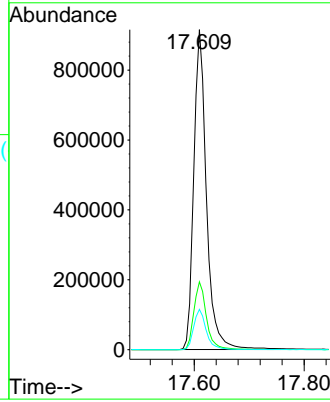
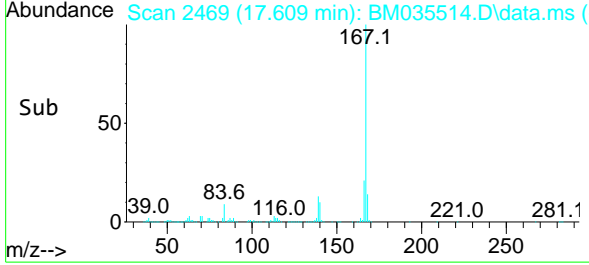


Tgt Ion:167 Resp: 1464938
 Ion Ratio Lower Upper
 167 100
 166 21.2 17.4 26.0
 139 12.6 10.1 15.1

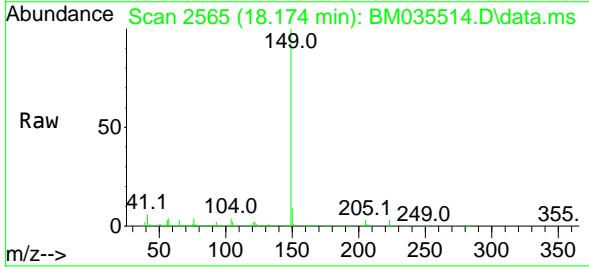
Manual Integrations

APPROVED

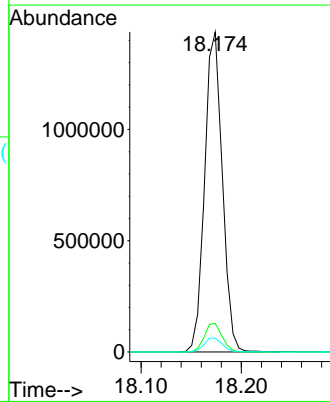
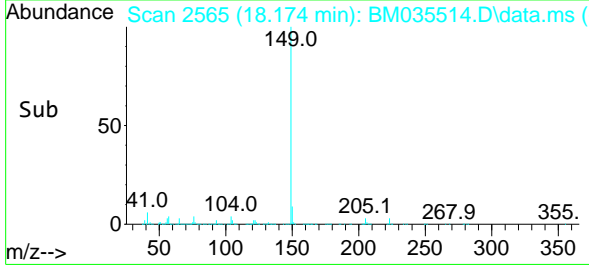
Reviewed By :Jagrut Upadhyay 06/18/2022
 Supervised By :Yogesh Patel 06/22/2022

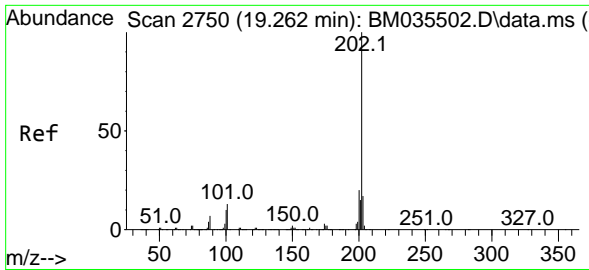


#78
 Di-n-butylphthalate
 Concen: 27.066 ng/uI
 RT: 18.174 min Scan# 2565
 Delta R.T. -0.000 min
 Lab File: BM035514.D
 Acq: 18 Jun 2022 03:27



Tgt Ion:149 Resp: 1766199
 Ion Ratio Lower Upper
 149 100
 150 8.9 7.3 10.9
 104 4.3 3.7 5.5





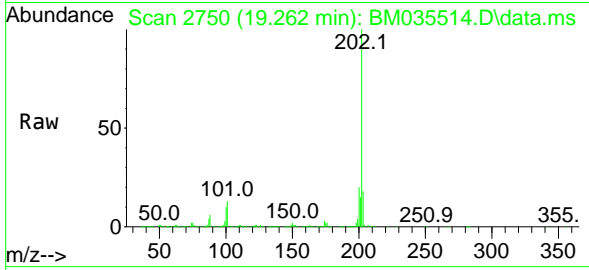
#80
 Fluoranthene
 Concen: 31.488 ng/u1
 RT: 19.262 min Scan# 2750
 Delta R.T. -0.006 min
 Lab File: BM035514.D
 Acq: 18 Jun 2022 03:27

Instrument :

BNA_M

ClientSampleId :

SLCS488

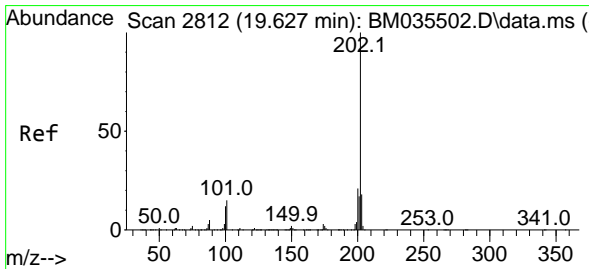
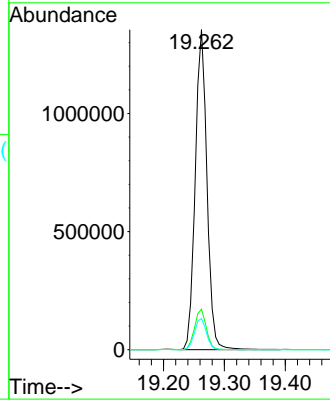
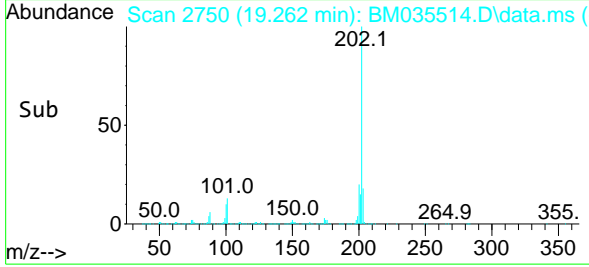


Tgt Ion:202 Resp: 1806570
 Ion Ratio Lower Upper
 202 100
 101 12.6 10.1 15.1
 100 9.8 7.8 11.6

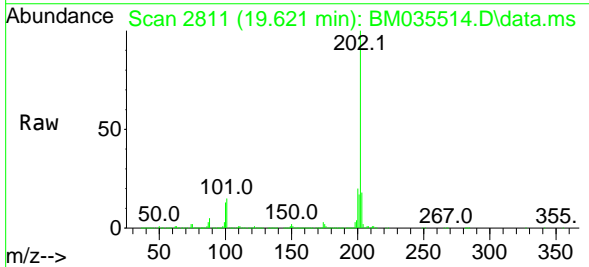
Manual Integrations

APPROVED

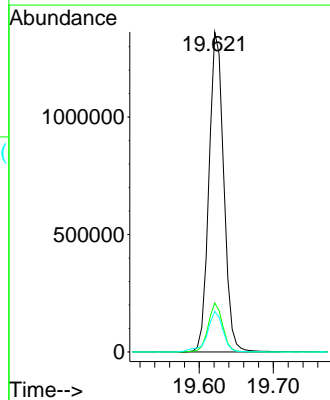
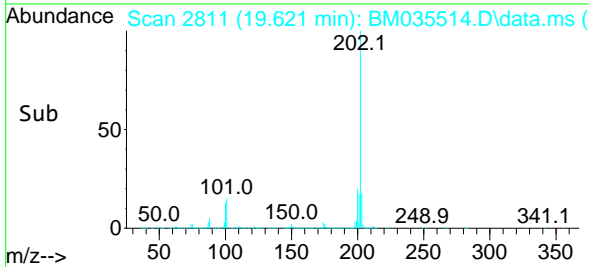
Reviewed By :Jagrut Upadhyay 06/18/2022
 Supervised By :Yogesh Patel 06/22/2022

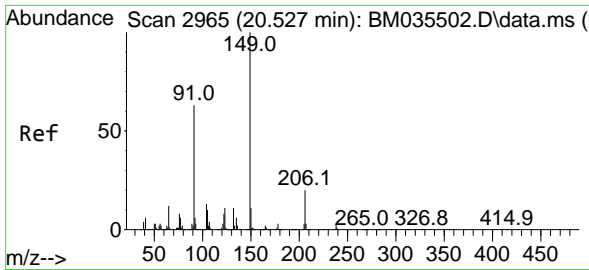


#82
 Pyrene
 Concen: 31.435 ng/u1
 RT: 19.621 min Scan# 2811
 Delta R.T. -0.006 min
 Lab File: BM035514.D
 Acq: 18 Jun 2022 03:27



Tgt Ion:202 Resp: 1887699
 Ion Ratio Lower Upper
 202 100
 101 15.3 11.9 17.9
 100 12.7 10.2 15.4





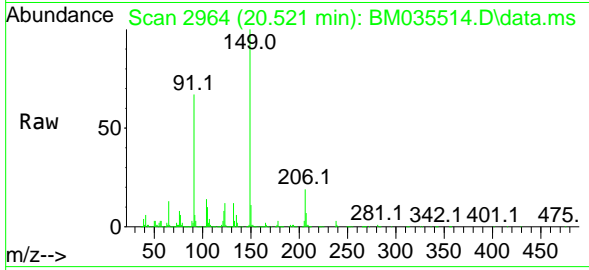
#83
 Butylbenzylphthalate
 Concen: 31.394 ng/ul
 RT: 20.521 min Scan# 2965
 Delta R.T. -0.006 min
 Lab File: BM035514.D
 Acq: 18 Jun 2022 03:27

Instrument :

BNA_M

ClientSampled :

SLCS488

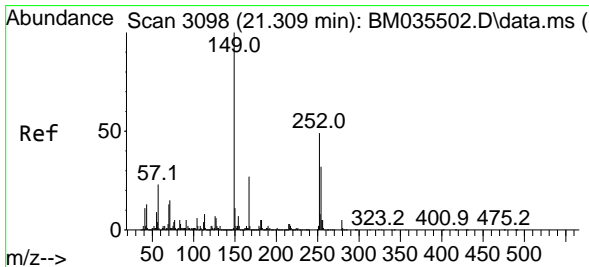
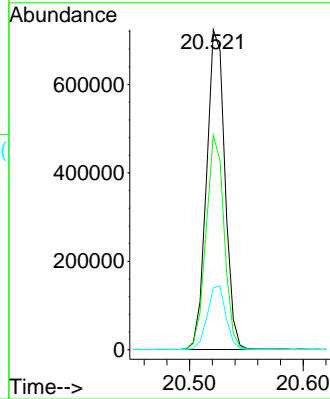
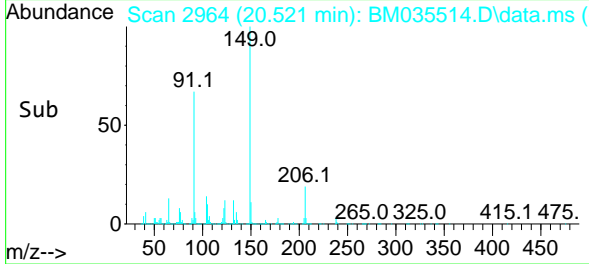


Tgt Ion:149 Resp: 81048
 Ion Ratio Lower Upper
 149 100
 91 67.0 53.2 79.8
 206 19.4 16.0 24.0

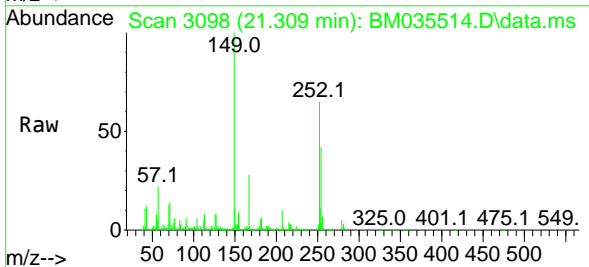
Manual Integrations

APPROVED

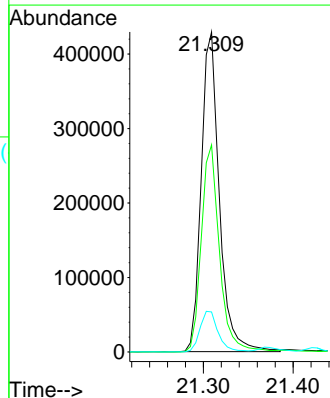
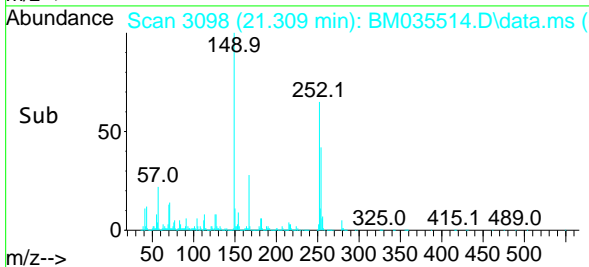
Reviewed By :Jagrut Upadhyay 06/18/2022
 Supervised By :Yogesh Patel 06/22/2022

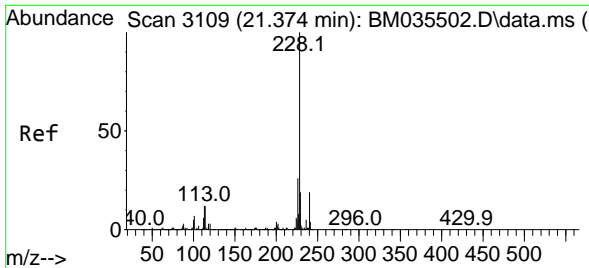


#84
 3,3'-Dichlorobenzidine
 Concen: 34.344 ng/ul
 RT: 21.309 min Scan# 3098
 Delta R.T. -0.006 min
 Lab File: BM035514.D
 Acq: 18 Jun 2022 03:27



Tgt Ion:252 Resp: 600934
 Ion Ratio Lower Upper
 252 100
 254 64.7 52.4 78.6
 126 12.5 10.8 16.2





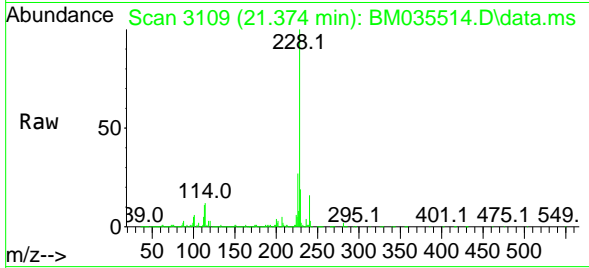
#85
 Benzo(a)anthracene
 Concen: 31.361 ng/uI
 RT: 21.374 min Scan# 3109
 Delta R.T. -0.000 min
 Lab File: BM035514.D
 Acq: 18 Jun 2022 03:27

Instrument :

BNA_M

ClientSampled :

SLCS488

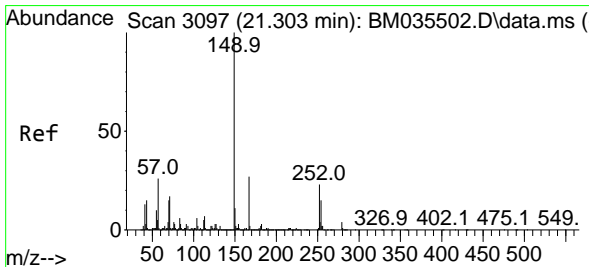
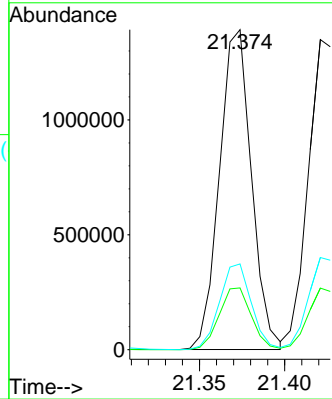
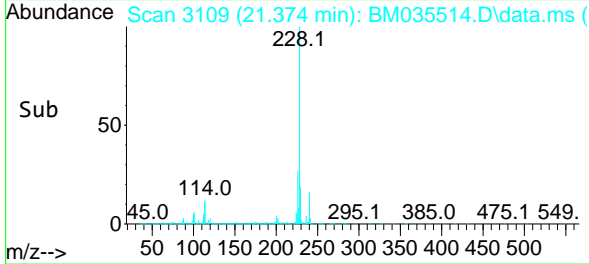


Tgt Ion:228 Resp: 1816574
 Ion Ratio Lower Upper
 228 100
 229 19.3 15.6 23.4
 226 26.8 21.7 32.5

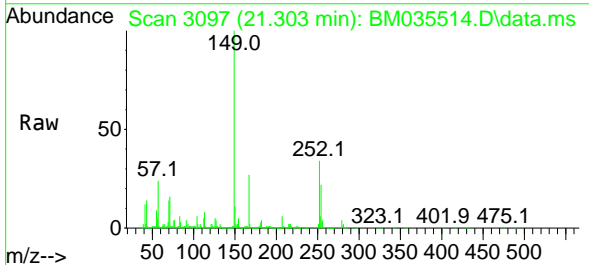
Manual Integrations

APPROVED

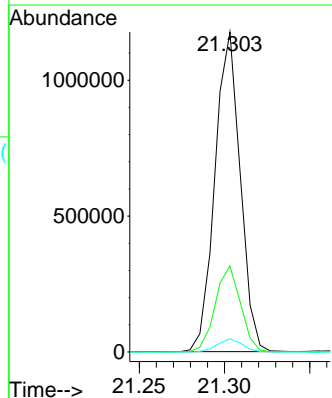
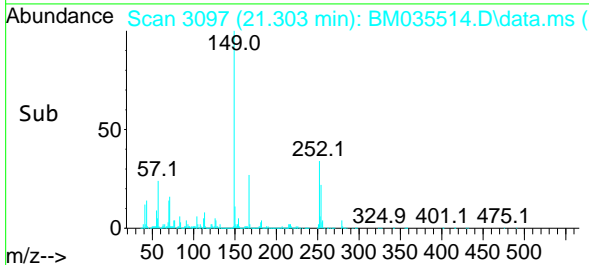
Reviewed By :Jagrut Upadhyay 06/18/2022
 Supervised By :Yogesh Patel 06/22/2022

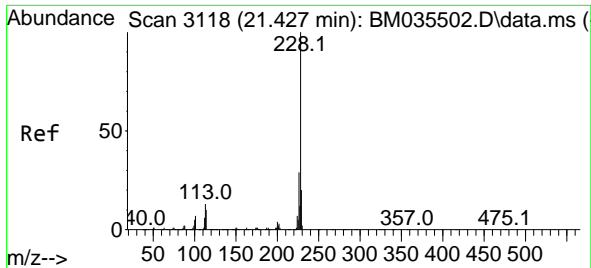


#86
 Bis(2-ethylhexyl)phthalate
 Concen: 31.591 ng/uI
 RT: 21.303 min Scan# 3097
 Delta R.T. -0.006 min
 Lab File: BM035514.D
 Acq: 18 Jun 2022 03:27



Tgt Ion:149 Resp: 1210269
 Ion Ratio Lower Upper
 149 100
 167 26.9 21.5 32.3
 279 4.1 3.4 5.2





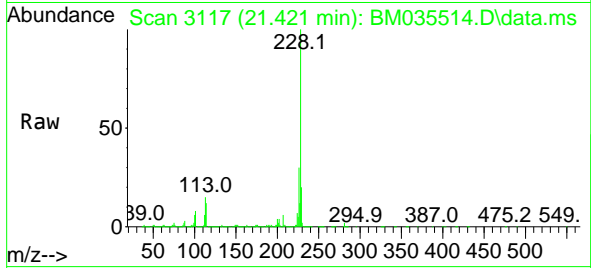
#87
 Chrysene
 Concen: 31.465 ng/u1
 RT: 21.421 min Scan# 3117
 Delta R.T. -0.006 min
 Lab File: BM035514.D
 Acq: 18 Jun 2022 03:27

Instrument :

BNA_M

ClientSampleId :

SLCS488

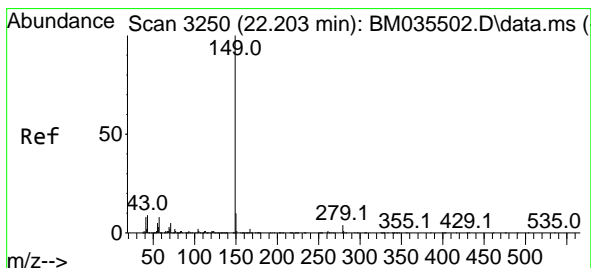
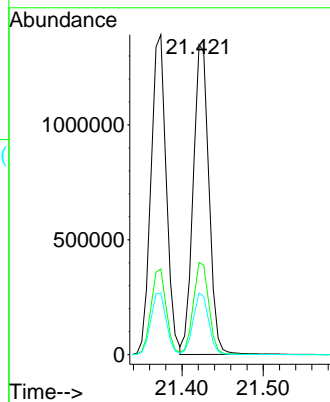
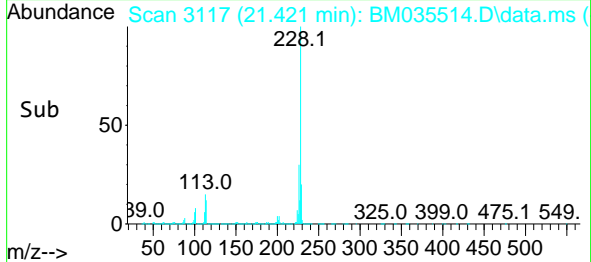


Tgt Ion:228 Resp: 181693
 Ion Ratio Lower Upper
 228 100
 226 29.7 23.7 35.5
 229 19.9 15.5 23.3

Manual Integrations

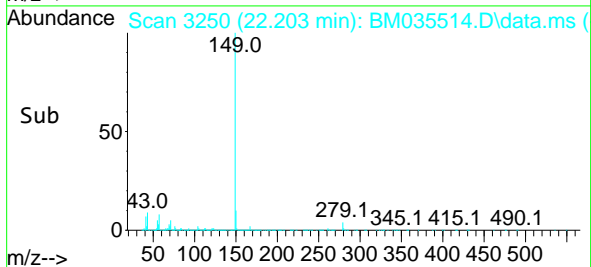
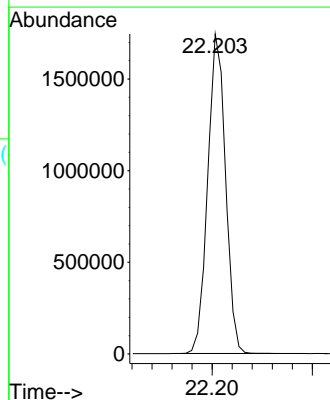
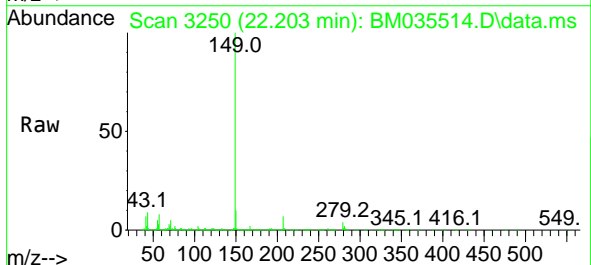
APPROVED

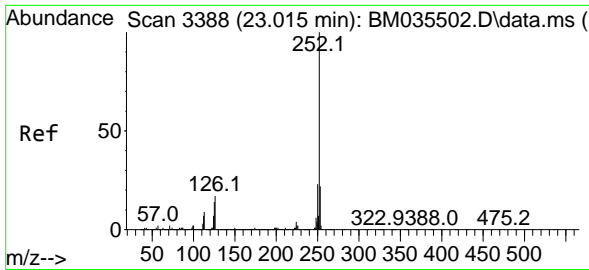
Reviewed By :Jagrut Upadhyay 06/18/2022
 Supervised By :Yogesh Patel 06/22/2022



#89
 Di-n-octyl phthalate
 Concen: 31.732 ng/u1
 RT: 22.203 min Scan# 3250
 Delta R.T. -0.006 min
 Lab File: BM035514.D
 Acq: 18 Jun 2022 03:27

Tgt Ion:149 Resp: 2154775





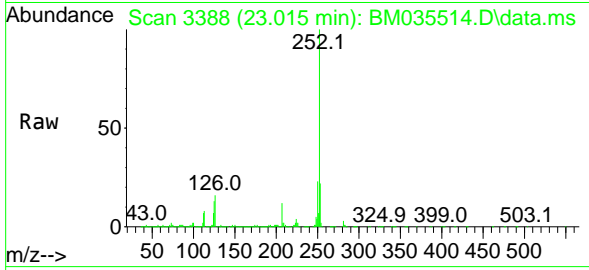
#90
 Benzo(b)fluoranthene
 Concen: 31.499 ng/u1
 RT: 23.015 min Scan# 31
 Delta R.T. -0.006 min
 Lab File: BM035514.D
 Acq: 18 Jun 2022 03:27

Instrument :

BNA_M

ClientSampleId :

SLCS488

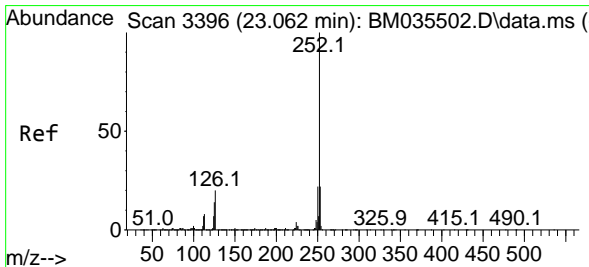
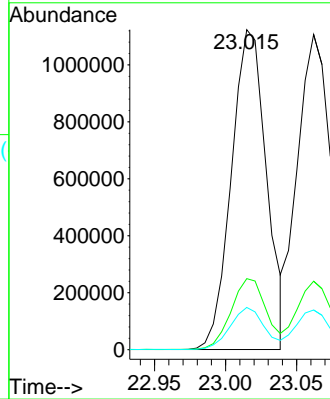
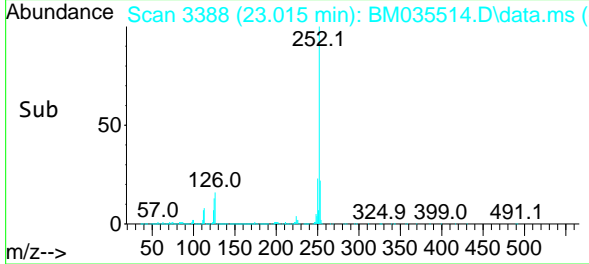


Tgt Ion:252 Resp: 193569
 Ion Ratio Lower Upper
 252 100
 253 22.2 17.5 26.3
 125 13.2 10.7 16.1

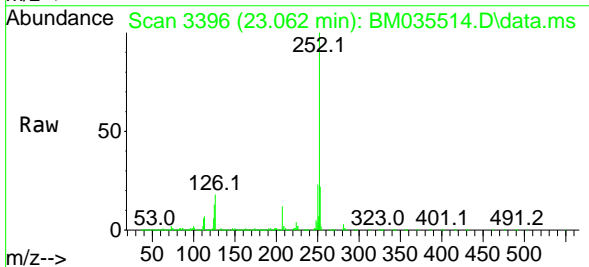
Manual Integrations

APPROVED

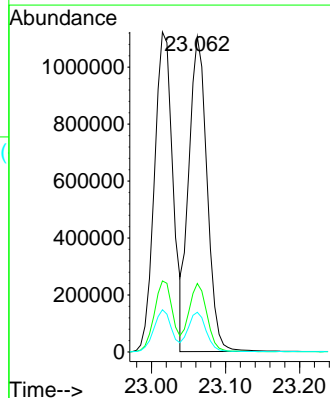
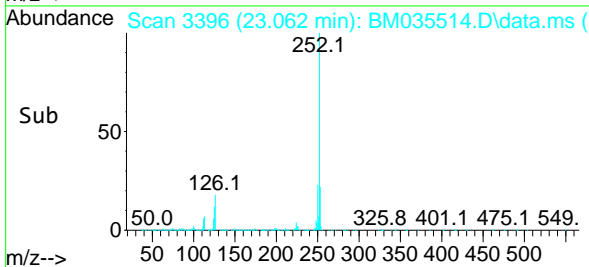
Reviewed By :Jagrut Upadhyay 06/18/2022
 Supervised By :Yogesh Patel 06/22/2022

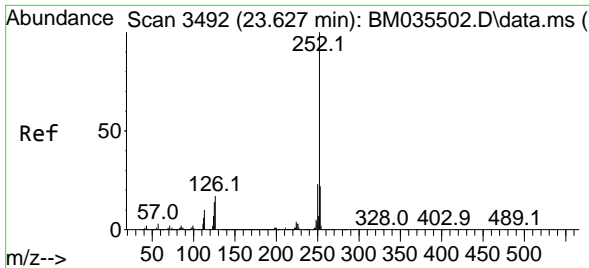


#91
 Benzo(k)fluoranthene
 Concen: 31.982 ng/u1
 RT: 23.062 min Scan# 3396
 Delta R.T. -0.006 min
 Lab File: BM035514.D
 Acq: 18 Jun 2022 03:27



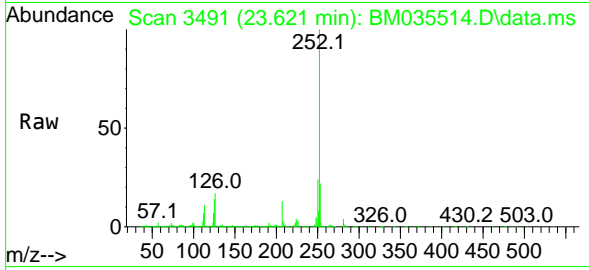
Tgt Ion:252 Resp: 1890447
 Ion Ratio Lower Upper
 252 100
 253 21.7 17.4 26.0
 125 12.6 10.6 15.8





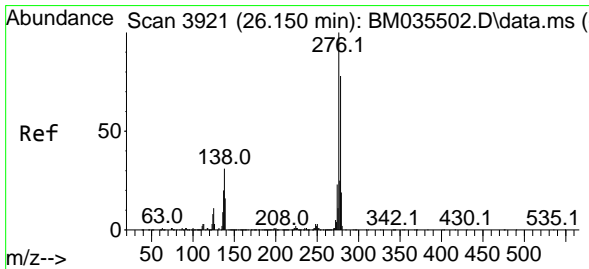
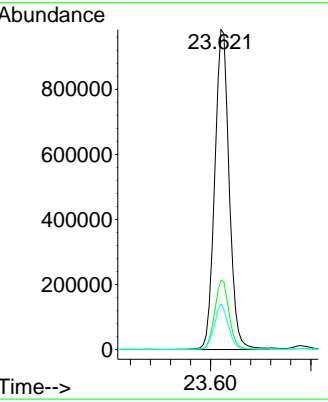
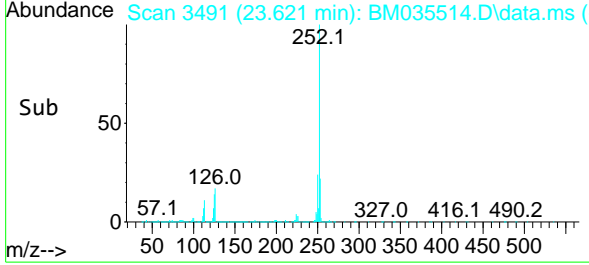
#93
 Benzo(a)pyrene
 Concen: 31.928 ng/u1
 RT: 23.621 min Scan# 3491
 Delta R.T. -0.006 min
 Lab File: BM035514.D
 Acq: 18 Jun 2022 03:27

Instrument : BNA_M
 Client Sample Id : SLCS488

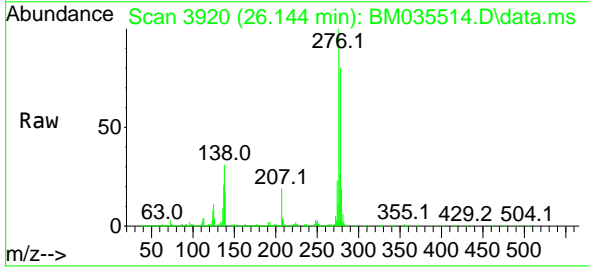


Tgt Ion:252 Resp: 196706
 Ion Ratio Lower Upper
 252 100
 253 21.7 17.3 25.9
 125 14.3 11.8 17.8

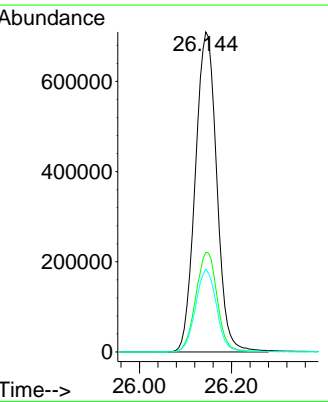
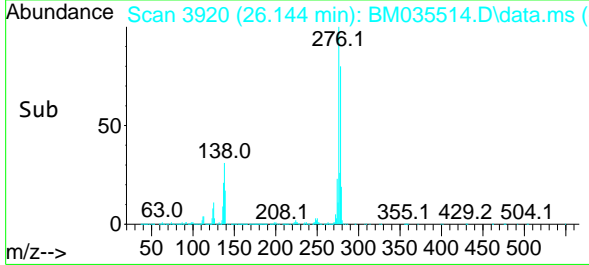
Manual Integrations
APPROVED
 Reviewed By :Jagrut Upadhyay 06/18/2022
 Supervised By :Yogesh Patel 06/22/2022

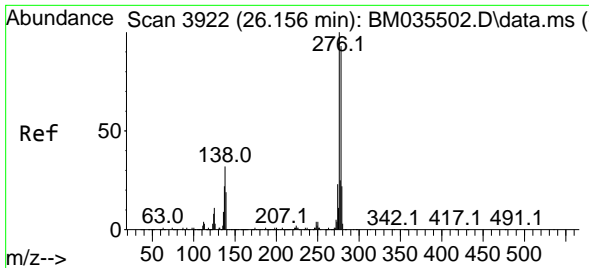


#94
 Indeno(1,2,3-cd)pyrene
 Concen: 31.821 ng/u1
 RT: 26.144 min Scan# 3920
 Delta R.T. -0.006 min
 Lab File: BM035514.D
 Acq: 18 Jun 2022 03:27



Tgt Ion:276 Resp: 2295240
 Ion Ratio Lower Upper
 276 100
 138 31.2 25.6 38.4
 277 25.9 20.1 30.1





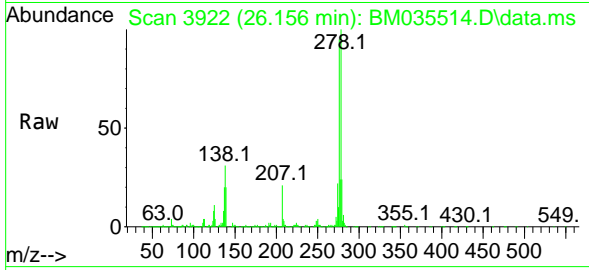
#95
 Dibenzo(a,h)anthracene
 Concen: 31.840 ng/ul
 RT: 26.156 min Scan# 3922
 Delta R.T. -0.006 min
 Lab File: BM035514.D
 Acq: 18 Jun 2022 03:27

Instrument :

BNA_M

ClientSampled :

SLCS488

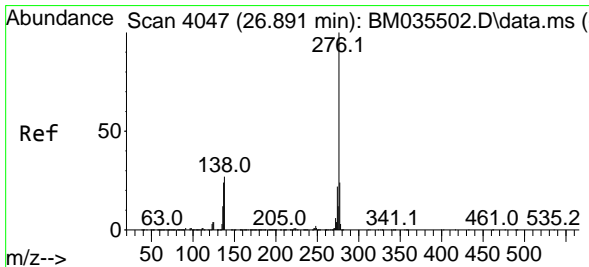
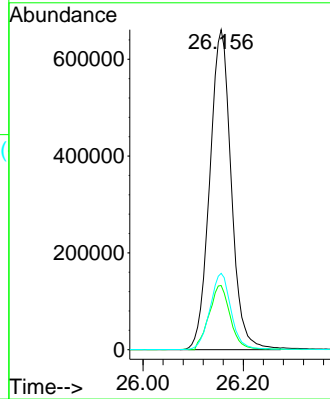
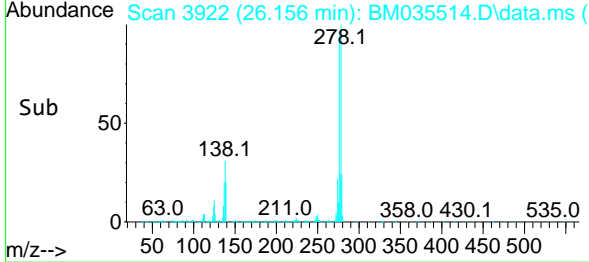


Tgt Ion:278 Resp: 1965049
 Ion Ratio Lower Upper
 278 100
 139 20.1 16.2 24.2
 279 23.9 18.7 28.1

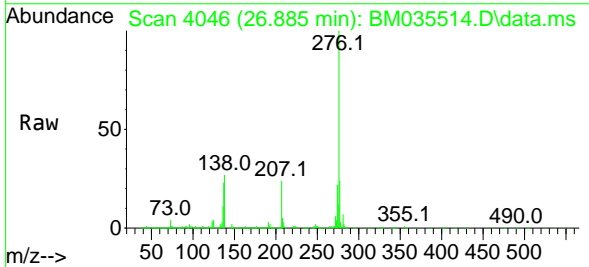
Manual Integrations

APPROVED

Reviewed By :Jagrut Upadhyay 06/18/2022
 Supervised By :Yogesh Patel 06/22/2022



#96
 Benzo(g,h,i)perylene
 Concen: 31.779 ng/ul
 RT: 26.885 min Scan# 4046
 Delta R.T. -0.012 min
 Lab File: BM035514.D
 Acq: 18 Jun 2022 03:27



Tgt Ion:276 Resp: 1964516
 Ion Ratio Lower Upper
 276 100
 138 26.5 21.3 31.9
 277 23.9 18.6 28.0

