

Data Path : Z:\svoasrv\HPCHEM1\BNA_M\Data\BM081022\
 Data File : BM036190.D
 Acq On : 10 Aug 2022 13:45
 Operator : CG/JU
 Sample : PB146797BS
 Misc :
 ALS Vial : 5 Sample Multiplier: 1

Instrument :
 BNA_M
ClientSampleId :
 PB146797BS

Manual Integrations
APPROVED
 Reviewed By :Christian Giraldo 08/11/2022
 Supervised By :Jagrut Upadhyay 08/11/2022

Quant Time: Aug 10 22:23:35 2022
 Quant Method : Z:\svoasrv\HPCHEM1\BNA_M\Methods\8270-BM080122.M
 Quant Title : ASP BNA STANDARDS FOR 5 POINT CALIBRATION
 QLast Update : Wed Aug 10 22:19:26 2022
 Response via : Initial Calibration

Compound	R.T.	QIon	Response	Conc	Units	Dev(Min)	
Internal Standards							
1) 1,4-Dichlorobenzene-d4	7.834	152	288538	20.000	ng	0.00	
21) Naphthalene-d8	10.639	136	1154344	20.000	ng	0.00	
39) Acenaphthene-d10	14.480	164	602362	20.000	ng	0.00	
64) Phenanthrene-d10	17.221	188	1055230	20.000	ng	0.00	
76) Chrysene-d12	21.398	240	848522	20.000	ng	0.00	
86) Perylene-d12	23.744	264	825350	20.000	ng	0.00	
System Monitoring Compounds							
5) 2-Fluorophenol	5.422	112	2329163	130.873	ng	0.00	
7) Phenol-d6	7.040	99	2857990	126.205	ng	0.00	
23) Nitrobenzene-d5	9.010	82	1724647	83.632	ng	0.00	
42) 2,4,6-Tribromophenol	15.968	330	842554	119.232	ng	0.00	
45) 2-Fluorobiphenyl	13.104	172	3503726	85.881	ng	0.00	
79) Terphenyl-d14	19.845	244	4114799	95.651	ng	0.00	
Target Compounds							
2) 1,4-Dioxane	3.269	88	213905	29.827	ng		Qvalue 92
3) Pyridine	3.681	79	615095	31.985	ng		89
4) n-Nitrosodimethylamine	3.593	42	320984	40.618	ng	#	66
6) Aniline	7.169	93	1098593	43.808	ng		95
8) 2-Chlorophenol	7.410	128	824565	43.454	ng		95
9) Benzaldehyde	6.981	77	398902	33.273	ng		94
10) Phenol	7.069	94	1020137	44.739	ng		91
11) bis(2-Chloroethyl)ether	7.269	93	748708	39.860	ng		95
12) 1,3-Dichlorobenzene	7.722	146	848184	40.337	ng		97
13) 1,4-Dichlorobenzene	7.869	146	872861	40.705	ng		99
14) 1,2-Dichlorobenzene	8.187	146	843400	40.762	ng		99
15) Benzyl Alcohol	8.092	79	662817m	43.617	ng		
16) 2,2'-oxybis(1-Chloropr...	8.375	45	980674	39.264	ng		96
17) 2-Methylphenol	8.310	107	657733	43.576	ng		95
18) Hexachloroethane	8.910	117	318642	41.278	ng		97
19) n-Nitroso-di-n-propyla...	8.651	70	543849	39.537	ng		89
20) 3+4-Methylphenols	8.640	107	871402	42.494	ng		97
22) Acetophenone	8.669	105	1157327	42.353	ng	#	93
24) Nitrobenzene	9.051	77	849047	43.796	ng		96
25) Isophorone	9.575	82	1476263	44.005	ng		98
26) 2-Nitrophenol	9.757	139	423382	46.302	ng		92
27) 2,4-Dimethylphenol	9.839	122	704418	49.731	ng		97
28) bis(2-Chloroethoxy)met...	10.063	93	920782	38.525	ng		99
29) 2,4-Dichlorophenol	10.304	162	689193	43.266	ng		100
30) 1,2,4-Trichlorobenzene	10.504	180	714749	39.595	ng		99
31) Naphthalene	10.692	128	2400673	41.830	ng		99
32) Benzoic acid	10.010	122	485906	43.276	ng		93
33) 4-Chloroaniline	10.816	127	754249	32.610	ng		96
34) Hexachlorobutadiene	10.963	225	415817	39.201	ng		98
35) Caprolactam	11.622	113	205286	41.840	ng		92
36) 4-Chloro-3-methylphenol	11.963	107	692837	41.381	ng		99
37) 2-Methylnaphthalene	12.304	142	1557534	40.783	ng		97
38) 1-Methylnaphthalene	12.522	142	1491792	39.887	ng		98
40) 1,2,4,5-Tetrachloroben...	12.669	216	731524	44.794	ng		99
41) Hexachlorocyclopentadiene	12.639	237	925699	107.027	ng		99
43) 2,4,6-Trichlorophenol	12.922	196	496677	44.696	ng		100

Data Path : Z:\svoasrv\HPCHEM1\BNA_M\Data\BM081022\
 Data File : BM036190.D
 Acq On : 10 Aug 2022 13:45
 Operator : CG/JU
 Sample : PB146797BS
 Misc :
 ALS Vial : 5 Sample Multiplier: 1

Instrument :
 BNA_M
 ClientSampleId :
 PB146797BS

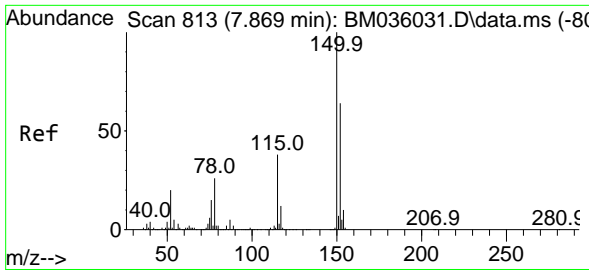
Manual Integrations
 APPROVED

Reviewed By : Christian Giraldo 08/11/2022
 Supervised By : Jagrut Upadhyay 08/11/2022

Quant Time: Aug 10 22:23:35 2022
 Quant Method : Z:\svoasrv\HPCHEM1\BNA_M\Methods\8270-BM080122.M
 Quant Title : ASP BNA STANDARDS FOR 5 POINT CALIBRATION
 QLast Update : Wed Aug 10 22:19:26 2022
 Response via : Initial Calibration

Compound	R.T.	QIon	Response	Conc	Units	Dev(Min)
44) 2,4,5-Trichlorophenol	13.004	196	530889	45.258	ng	97
46) 1,1'-Biphenyl	13.316	154	1932124	44.013	ng	99
47) 2-Chloronaphthalene	13.357	162	1494667	44.487	ng	99
48) 2-Nitroaniline	13.575	65	421883	46.076	ng	92
49) Acenaphthylene	14.198	152	2342174	45.098	ng	100
50) Dimethylphthalate	13.945	163	1640822	40.056	ng	100
51) 2,6-Dinitrotoluene	14.069	165	369890	45.005	ng	91
52) Acenaphthene	14.539	154	1630518m	47.994	ng	
53) 3-Nitroaniline	14.404	138	332199	34.644	ng	92
54) 2,4-Dinitrophenol	14.610	184	419866	96.538	ng	88
55) Dibenzofuran	14.874	168	2122523	41.720	ng	98
56) 4-Nitrophenol	14.739	139	686443	89.455	ng	87
57) 2,4-Dinitrotoluene	14.857	165	490759	45.556	ng	98
58) Fluorene	15.527	166	1683874	41.959	ng	98
59) 2,3,4,6-Tetrachlorophenol	15.110	232	405647	40.823	ng	97
60) Diethylphthalate	15.304	149	1600226	38.014	ng	100
61) 4-Chlorophenyl-phenyle...	15.521	204	779552	38.956	ng	96
62) 4-Nitroaniline	15.563	138	409891m	41.551	ng	
63) Azobenzene	15.810	77	1592462	39.793	ng	94
65) 4,6-Dinitro-2-methylph...	15.616	198	242825	45.005	ng	94
66) n-Nitrosodiphenylamine	15.739	169	1386418	46.541	ng	99
67) 4-Bromophenyl-phenylether	16.415	248	453633	42.978	ng	94
68) Hexachlorobenzene	16.521	284	549146	45.344	ng	92
69) Atrazine	16.692	200	445887	53.494	ng	100
70) Pentachlorophenol	16.874	266	633318	89.290	ng	100
71) Phenanthrene	17.262	178	2431192	45.223	ng	99
72) Anthracene	17.351	178	2441904	46.917	ng	99
73) Carbazole	17.633	167	2283703	43.305	ng	99
74) Di-n-butylphthalate	18.192	149	2503097	39.762	ng	99
75) Fluoranthene	19.274	202	2558306	42.512	ng	98
77) Benzidine	19.468	184	1551028	121.885	ng	99
78) Pyrene	19.639	202	2637072	50.119	ng	99
80) Butylbenzylphthalate	20.539	149	1034267	45.543	ng	99
81) Benzo(a)anthracene	21.386	228	2369945	45.346	ng	99
82) 3,3'-Dichlorobenzidine	21.327	252	803914	63.347	ng	99
83) Chrysene	21.439	228	2221991	44.725	ng	99
84) Bis(2-ethylhexyl)phtha...	21.315	149	1409485	41.140	ng	99
85) Di-n-octyl phthalate	22.221	149	2277208	40.727	ng	# 95
87) Indeno(1,2,3-cd)pyrene	26.191	276	2720533	46.905	ng	99
88) Benzo(b)fluoranthene	23.033	252	2351637	48.631	ng	99
89) Benzo(k)fluoranthene	23.080	252	2282500	46.734	ng	99
90) Benzo(a)pyrene	23.644	252	2061098	50.800	ng	99
91) Dibenzo(a,h)anthracene	26.203	278	2395220	49.335	ng	98
92) Benzo(g,h,i)perylene	26.938	276	2420483	51.498	ng	99

(#) = qualifier out of range (m) = manual integration (+) = signals summed



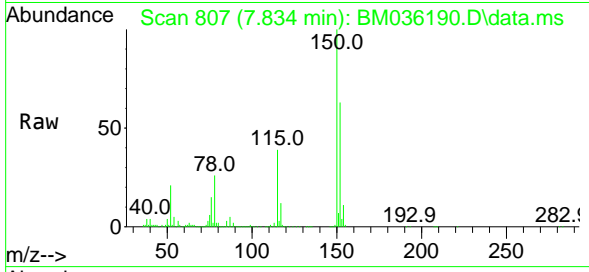
#1
 1,4-Dichlorobenzene-d4
 Concen: 20.000 ng
 RT: 7.834 min Scan# 80
 Delta R.T. -0.000 min
 Lab File: BM036190.D
 Acq: 10 Aug 2022 13:45

Instrument :

BNA_M

Client Sample Id :

PB146797BS

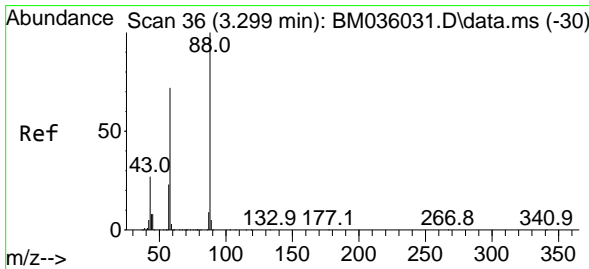
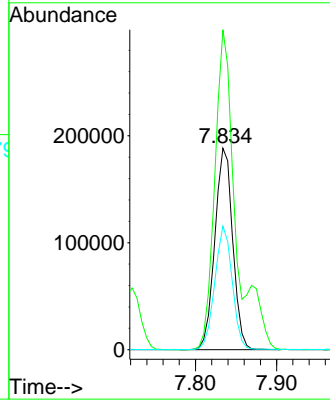
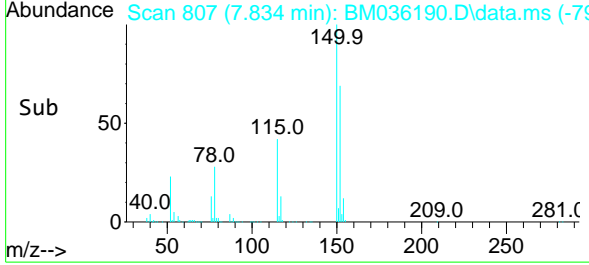


Tgt Ion: 152 Resp: 288538
 Ion Ratio Lower Upper
 152 100
 150 158.8 124.9 187.3
 115 61.3 47.9 71.9

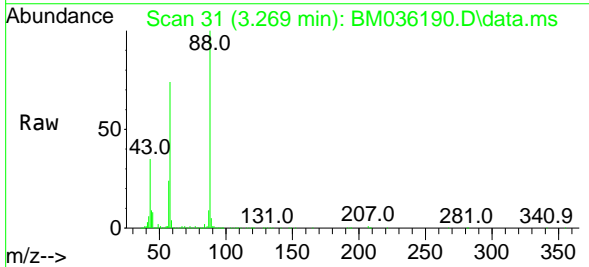
Manual Integrations

APPROVED

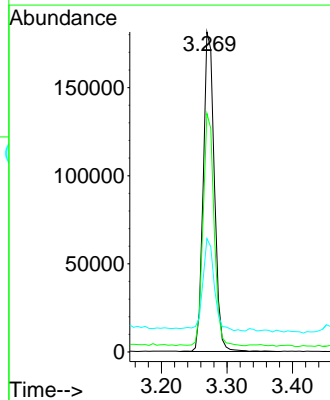
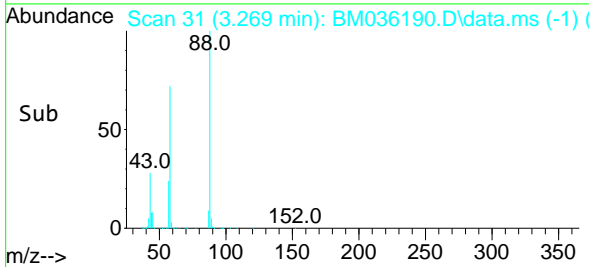
Reviewed By : Christian Giraldo 08/11/2022
 Supervised By : Jagrut Upadhyay 08/11/2022

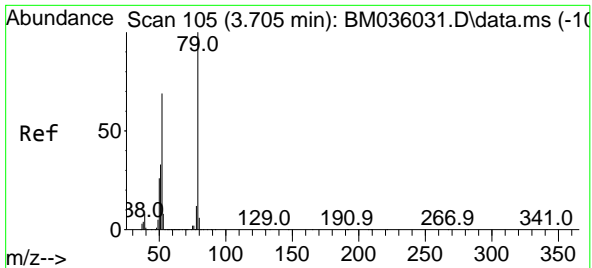


#2
 1,4-Dioxane
 Concen: 29.827 ng
 RT: 3.269 min Scan# 31
 Delta R.T. 0.006 min
 Lab File: BM036190.D
 Acq: 10 Aug 2022 13:45



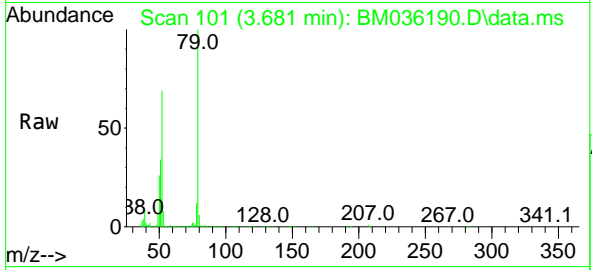
Tgt Ion: 88 Resp: 213905
 Ion Ratio Lower Upper
 88 100
 58 71.7 62.3 93.5
 43 29.5 28.7 43.1





#3
 Pyridine
 Concen: 31.985 ng
 RT: 3.681 min Scan# 10
 Delta R.T. 0.006 min
 Lab File: BM036190.D
 Acq: 10 Aug 2022 13:45

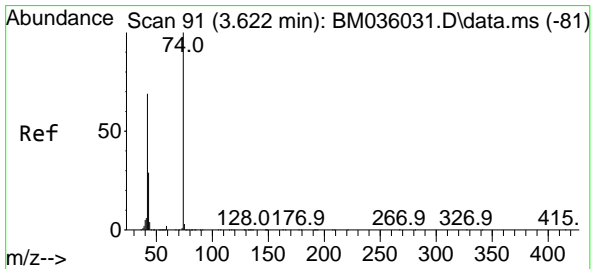
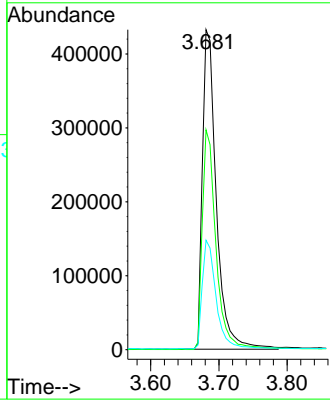
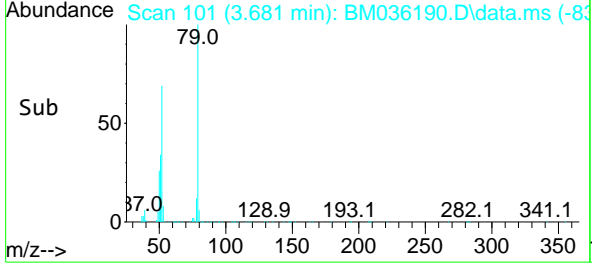
Instrument : BNA_M
 Client Sample Id : PB146797BS



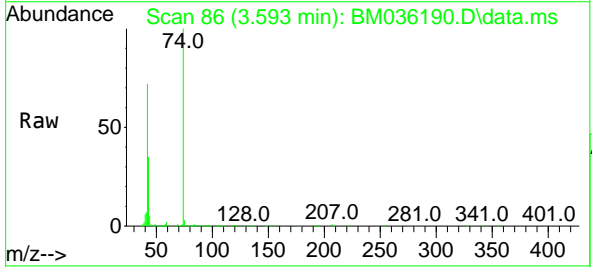
Tgt Ion: 79 Resp: 61509
 Ion Ratio Lower Upper
 79 100
 52 68.7 61.9 92.9
 51 34.2 33.5 50.3

Manual Integrations
APPROVED

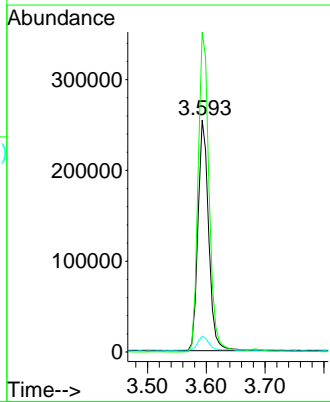
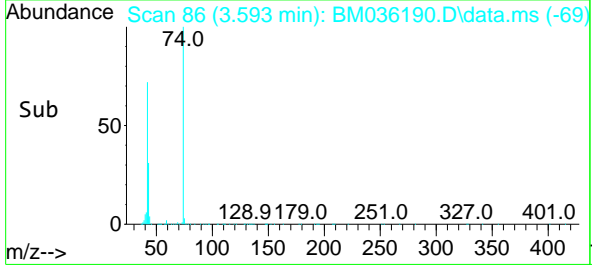
Reviewed By :Christian Giraldo 08/11/2022
 Supervised By :Jagrut Upadhyay 08/11/2022

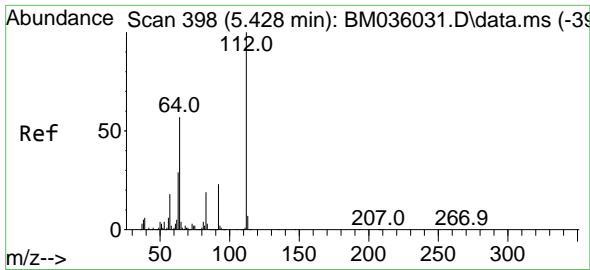


#4
 n-Nitrosodimethylamine
 Concen: 40.618 ng
 RT: 3.593 min Scan# 86
 Delta R.T. 0.000 min
 Lab File: BM036190.D
 Acq: 10 Aug 2022 13:45



Tgt Ion: 42 Resp: 320984
 Ion Ratio Lower Upper
 42 100
 74 138.0 81.6 122.4#
 44 6.8 5.2 7.8





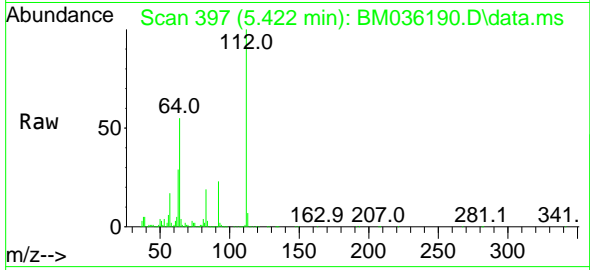
#5
 2-Fluorophenol
 Concen: 130.873 ng
 RT: 5.422 min Scan# 397
 Delta R.T. 0.006 min
 Lab File: BM036190.D
 Acq: 10 Aug 2022 13:45

Instrument :

BNA_M

Client Sample Id :

PB146797BS

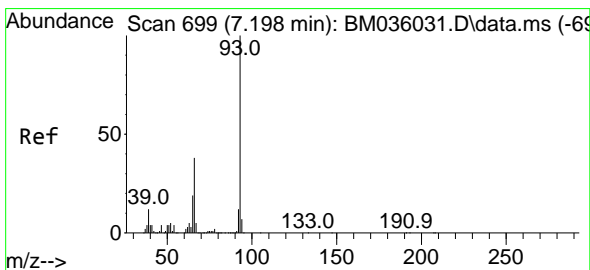
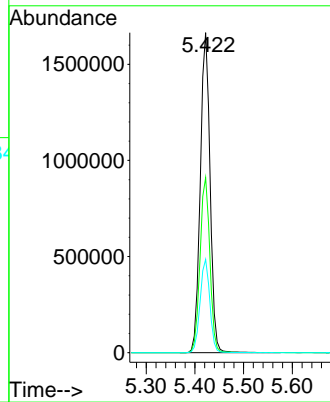
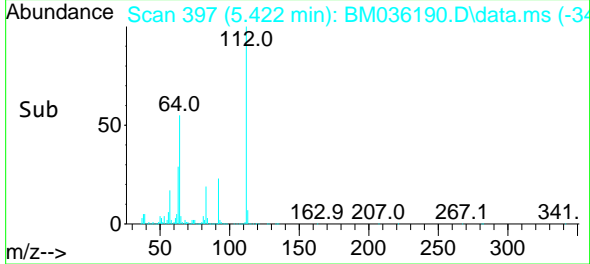


Tgt Ion: 112 Resp: 232916
 Ion Ratio Lower Upper
 112 100
 64 54.7 47.8 71.6
 63 29.1 26.6 40.0

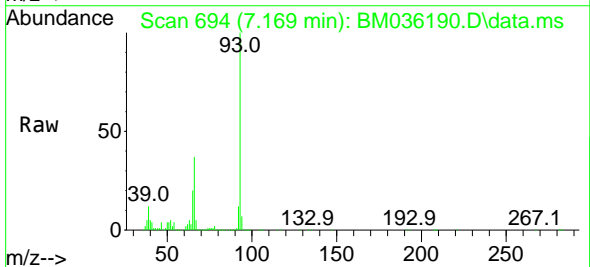
Manual Integrations

APPROVED

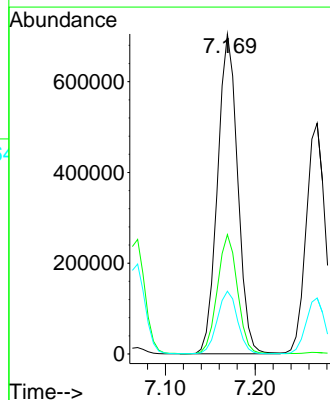
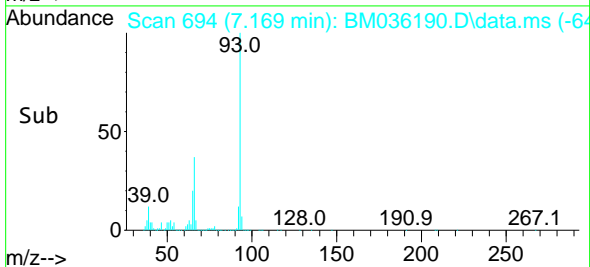
Reviewed By : Christian Giraldo 08/11/2022
 Supervised By : Jagrut Upadhyay 08/11/2022

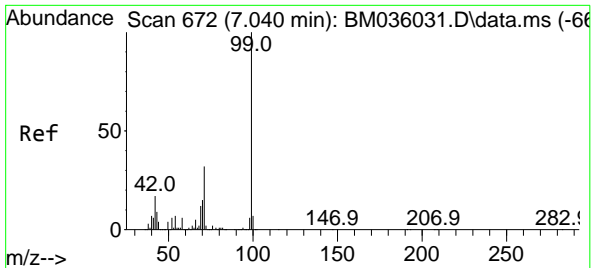


#6
 Aniline
 Concen: 43.808 ng
 RT: 7.169 min Scan# 694
 Delta R.T. 0.000 min
 Lab File: BM036190.D
 Acq: 10 Aug 2022 13:45



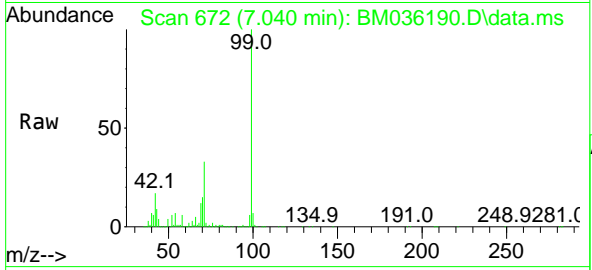
Tgt Ion: 93 Resp: 1098593
 Ion Ratio Lower Upper
 93 100
 66 37.3 32.6 49.0
 65 19.6 16.8 25.2





#7
 Phenol-d6
 Concen: 126.205 ng
 RT: 7.040 min Scan# 61
 Delta R.T. 0.006 min
 Lab File: BM036190.D
 Acq: 10 Aug 2022 13:45

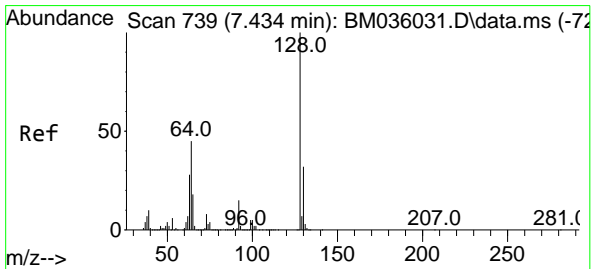
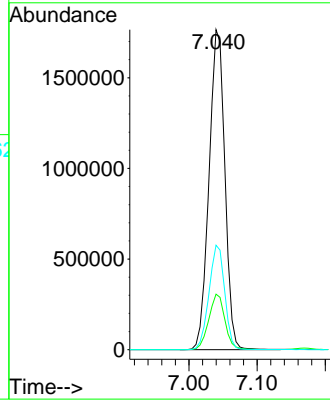
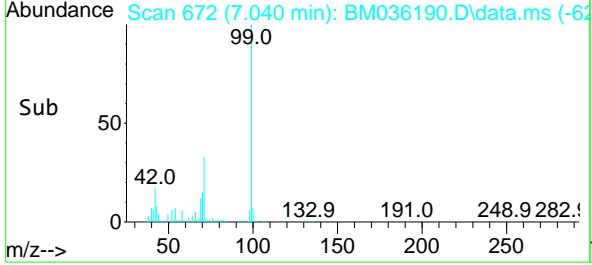
Instrument : BNA_M
 ClientSampleId : PB146797BS



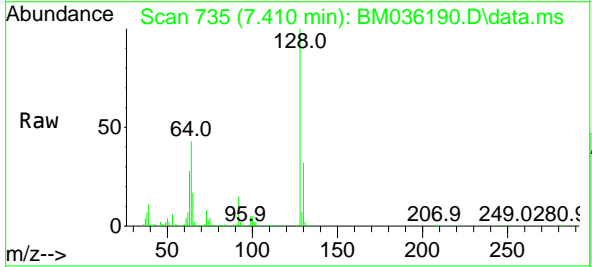
Tgt Ion: 99 Resp: 2857990
 Ion Ratio Lower Upper
 99 100
 42 17.4 18.8 28.2
 71 32.6 30.2 45.2

Manual Integrations
 APPROVED

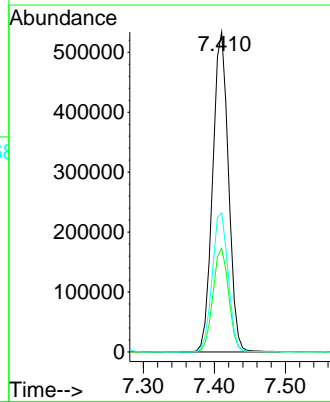
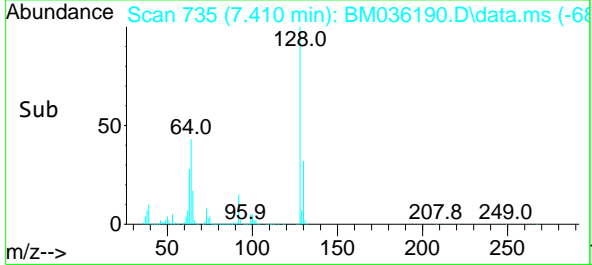
Reviewed By :Christian Giraldo 08/11/2022
 Supervised By :Jagrut Upadhyay 08/11/2022

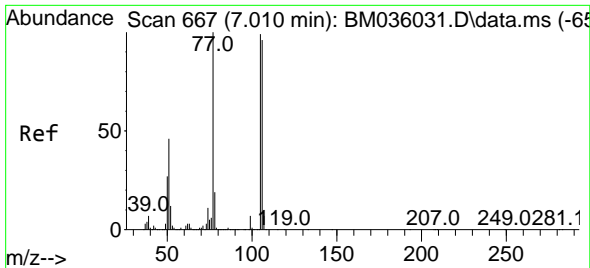


#8
 2-Chlorophenol
 Concen: 43.454 ng
 RT: 7.410 min Scan# 735
 Delta R.T. 0.006 min
 Lab File: BM036190.D
 Acq: 10 Aug 2022 13:45



Tgt Ion:128 Resp: 824565
 Ion Ratio Lower Upper
 128 100
 130 32.4 10.9 50.9
 64 43.5 28.2 68.2





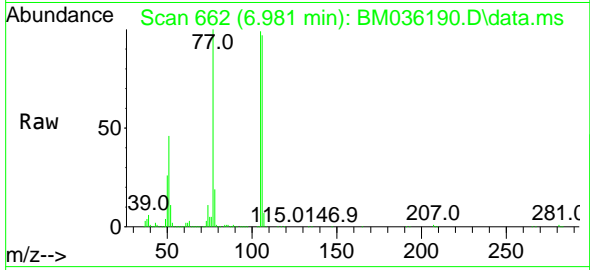
#9
 Benzaldehyde
 Concen: 33.273 ng
 RT: 6.981 min Scan# 60
 Delta R.T. 0.006 min
 Lab File: BM036190.D
 Acq: 10 Aug 2022 13:45

Instrument :

BNA_M

ClientSampleId :

PB146797BS

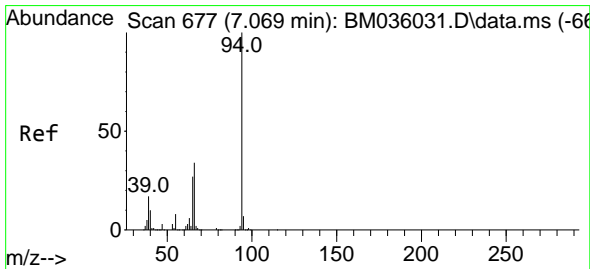
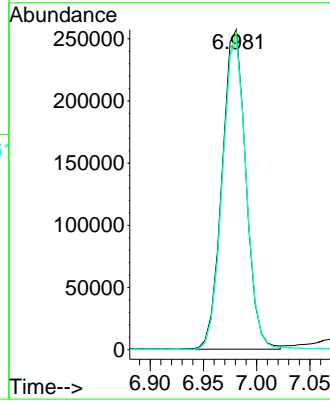
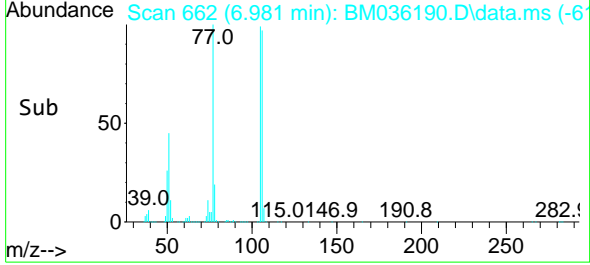


Tgt Ion: 77 Resp: 39890
 Ion Ratio Lower Upper
 77 100
 105 99.3 76.3 116.3
 106 97.0 69.0 109.0

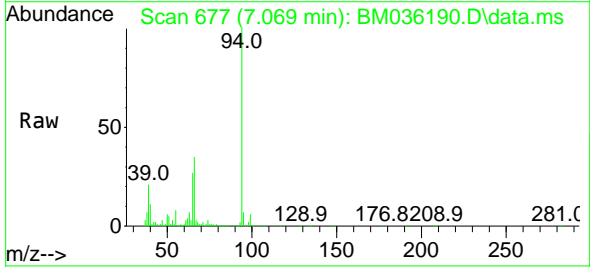
Manual Integrations

APPROVED

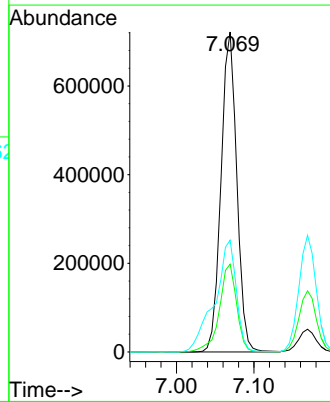
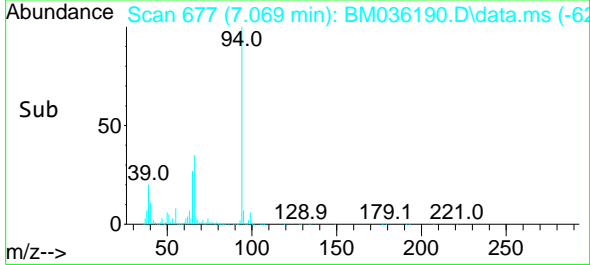
Reviewed By :Christian Giraldo 08/11/2022
 Supervised By :Jagrut Upadhyay 08/11/2022

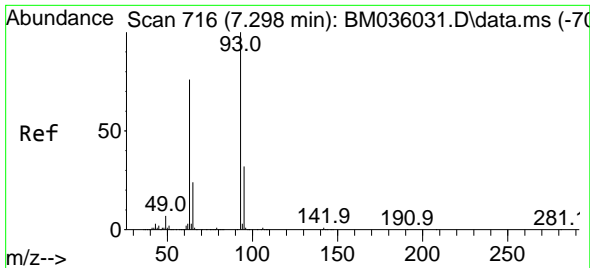


#10
 Phenol
 Concen: 44.739 ng
 RT: 7.069 min Scan# 677
 Delta R.T. 0.006 min
 Lab File: BM036190.D
 Acq: 10 Aug 2022 13:45



Tgt Ion: 94 Resp: 1020137
 Ion Ratio Lower Upper
 94 100
 65 27.5 11.4 51.4
 66 35.0 21.4 61.4





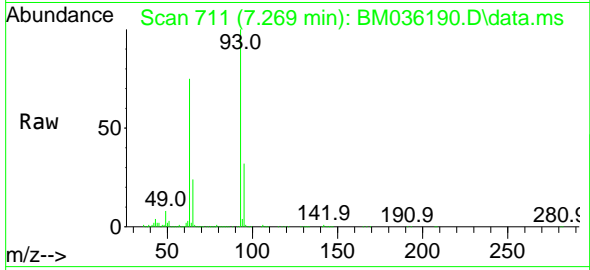
#11
 bis(2-Chloroethyl)ether
 Concen: 39.860 ng
 RT: 7.269 min Scan# 716
 Delta R.T. 0.006 min
 Lab File: BM036190.D
 Acq: 10 Aug 2022 13:45

Instrument :

BNA_M

ClientSampleId :

PB146797BS

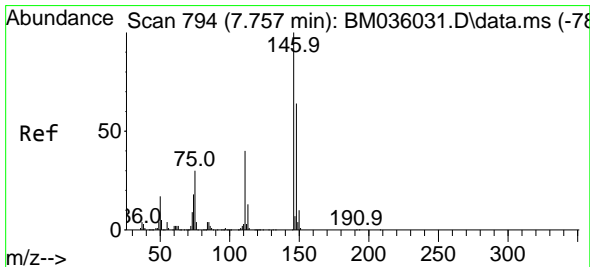
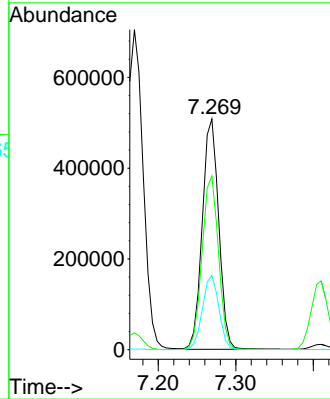
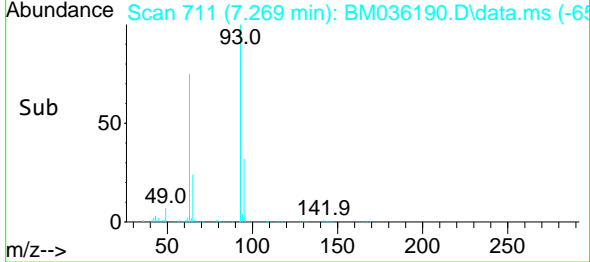


Tgt Ion: 93 Resp: 748708
 Ion Ratio Lower Upper
 93 100
 63 75.3 60.6 100.6
 95 32.3 13.2 53.2

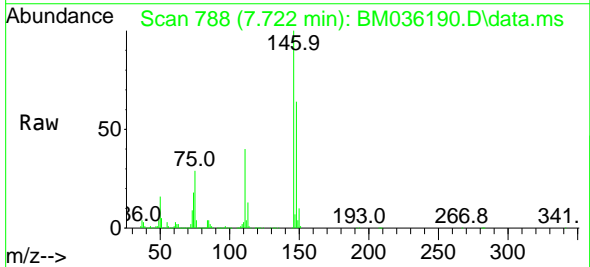
Manual Integrations

APPROVED

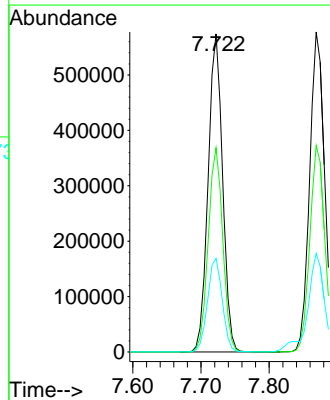
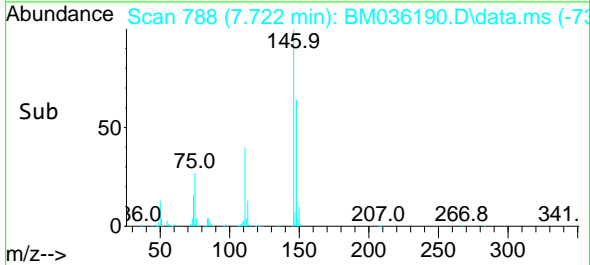
Reviewed By :Christian Giraldo 08/11/2022
 Supervised By :Jagrut Upadhyay 08/11/2022

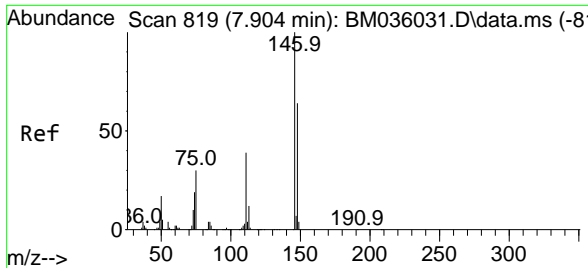


#12
 1,3-Dichlorobenzene
 Concen: 40.337 ng
 RT: 7.722 min Scan# 788
 Delta R.T. 0.006 min
 Lab File: BM036190.D
 Acq: 10 Aug 2022 13:45



Tgt Ion:146 Resp: 848184
 Ion Ratio Lower Upper
 146 100
 148 64.1 50.7 76.1
 75 29.4 26.1 39.1





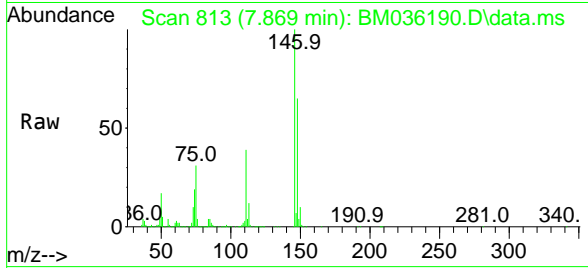
#13
 1,4-Dichlorobenzene
 Concen: 40.705 ng
 RT: 7.869 min Scan# 813
 Delta R.T. 0.000 min
 Lab File: BM036190.D
 Acq: 10 Aug 2022 13:45

Instrument :

BNA_M

Client Sample Id :

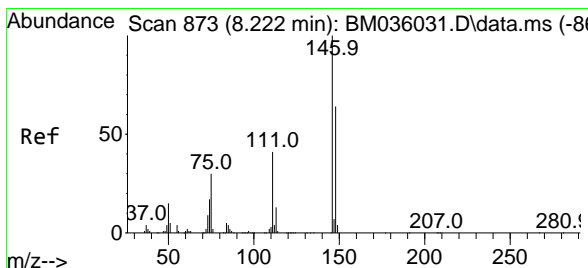
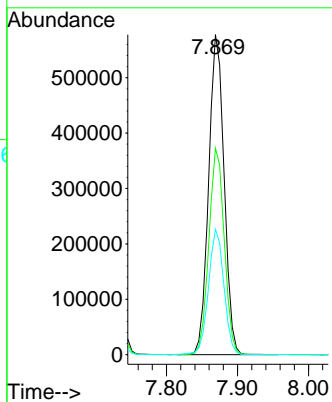
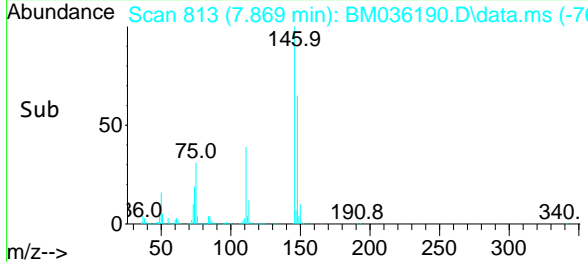
PB146797BS



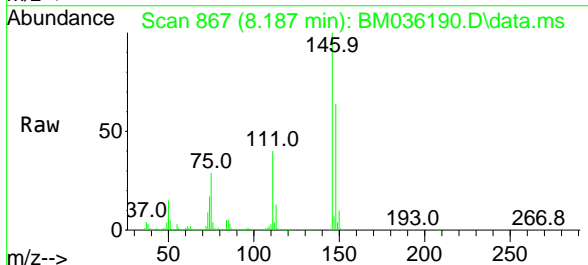
Tgt Ion:146 Resp: 87286
 Ion Ratio Lower Upper
 146 100
 148 64.5 51.5 77.3
 111 39.2 32.5 48.7

Manual Integrations
APPROVED

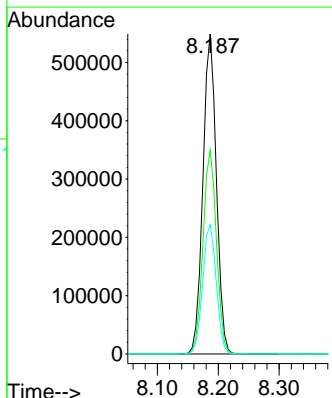
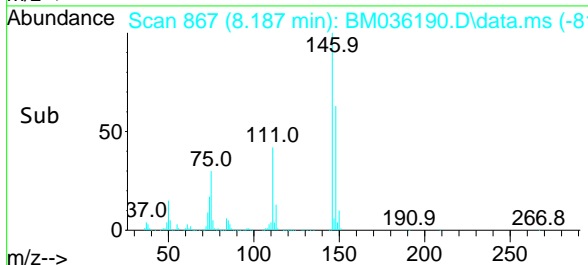
Reviewed By :Christian Giraldo 08/11/2022
 Supervised By :Jagrut Upadhyay 08/11/2022

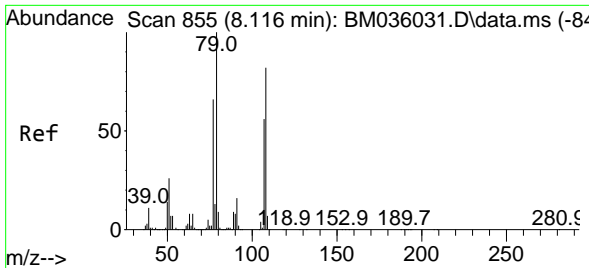


#14
 1,2-Dichlorobenzene
 Concen: 40.762 ng
 RT: 8.187 min Scan# 867
 Delta R.T. 0.000 min
 Lab File: BM036190.D
 Acq: 10 Aug 2022 13:45



Tgt Ion:146 Resp: 843400
 Ion Ratio Lower Upper
 146 100
 148 63.7 50.7 76.1
 111 40.5 33.9 50.9





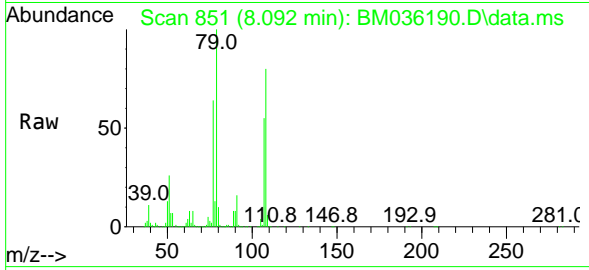
#15
 Benzyl Alcohol
 Concen: 43.617 ng m
 RT: 8.092 min Scan# 851
 Delta R.T. 0.000 min
 Lab File: BM036190.D
 Acq: 10 Aug 2022 13:45

Instrument :

BNA_M

ClientSampleId :

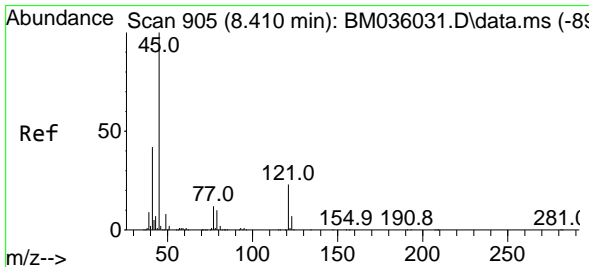
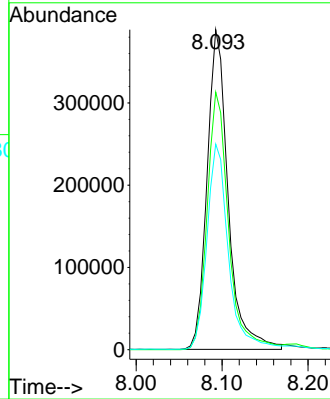
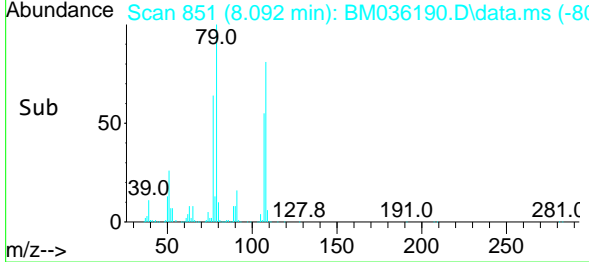
PB146797BS



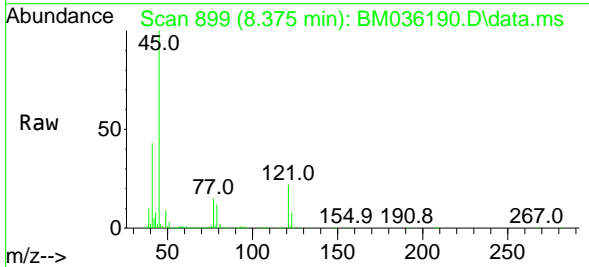
Tgt Ion: 79 Resp: 66281
 Ion Ratio Lower Upper
 79 100
 108 80.5 59.0 88.4
 77 64.3 52.2 78.4

Manual Integrations
 APPROVED

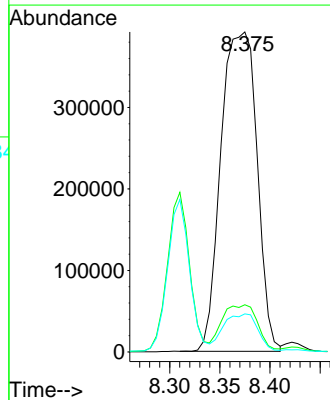
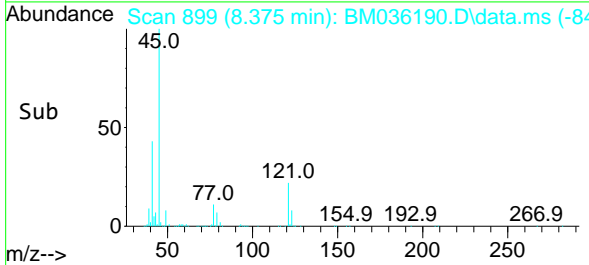
Reviewed By :Christian Giraldo 08/11/2022
 Supervised By :Jagrut Upadhyay 08/11/2022

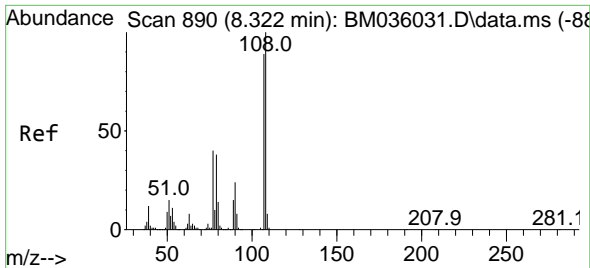


#16
 2,2'-oxybis(1-Chloropropane)
 Concen: 39.264 ng
 RT: 8.375 min Scan# 899
 Delta R.T. 0.006 min
 Lab File: BM036190.D
 Acq: 10 Aug 2022 13:45



Tgt Ion: 45 Resp: 980674
 Ion Ratio Lower Upper
 45 100
 77 14.8 0.0 33.1
 79 11.9 0.0 30.5





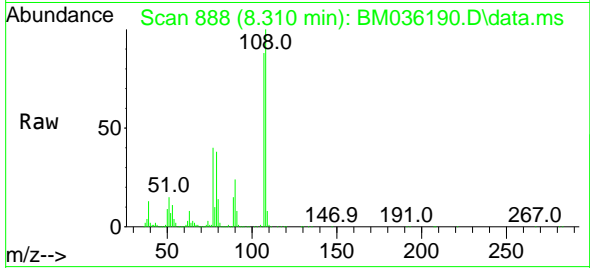
#17
 2-Methylphenol
 Concen: 43.576 ng
 RT: 8.310 min Scan# 890
 Delta R.T. 0.006 min
 Lab File: BM036190.D
 Acq: 10 Aug 2022 13:45

Instrument :

BNA_M

Client Sample Id :

PB146797BS

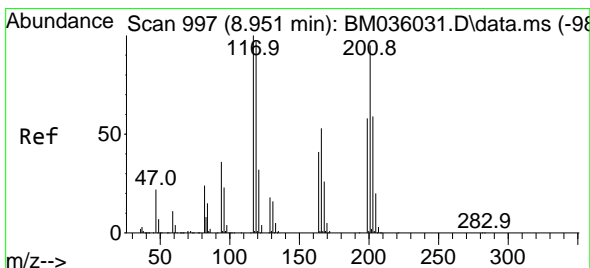
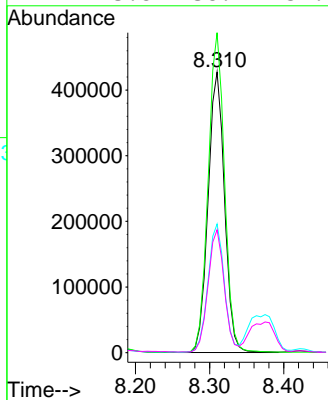
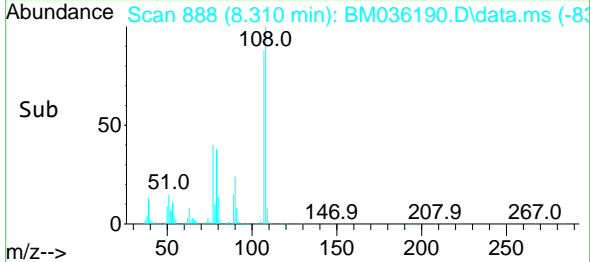


Tgt Ion	Resp	Lower	Upper
107	65773		
107	100		
108	114.0	88.7	133.1
77	45.8	40.6	60.8
79	43.8	38.4	57.6

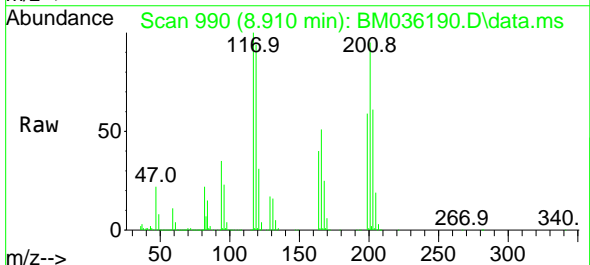
Manual Integrations

APPROVED

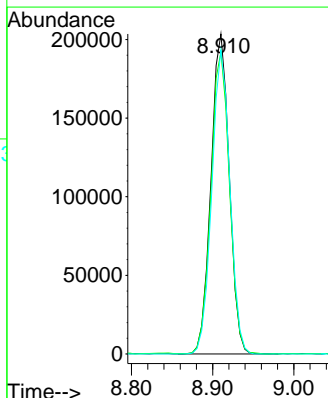
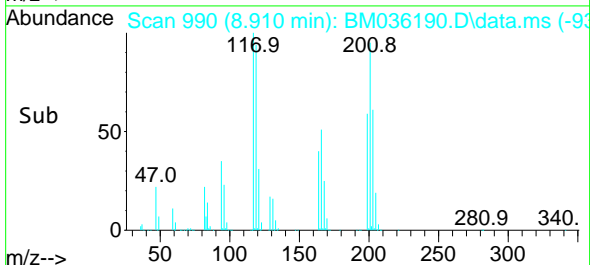
Reviewed By :Christian Giraldo 08/11/2022
 Supervised By :Jagrut Upadhyay 08/11/2022

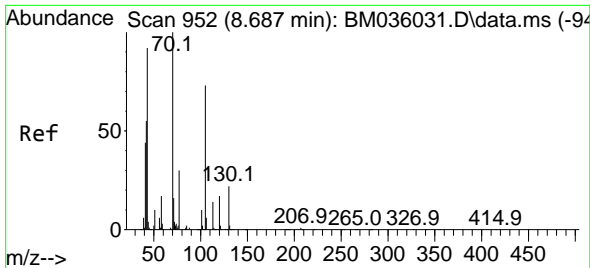


#18
 Hexachloroethane
 Concen: 41.278 ng
 RT: 8.910 min Scan# 990
 Delta R.T. 0.000 min
 Lab File: BM036190.D
 Acq: 10 Aug 2022 13:45



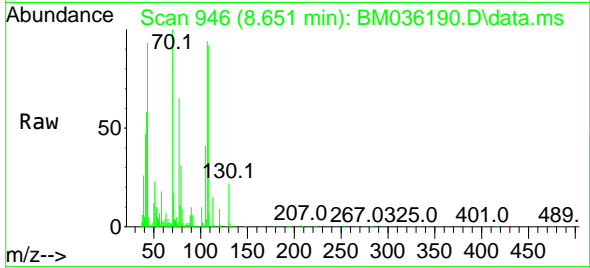
Tgt Ion	Resp	Lower	Upper
117	318642		
117	100		
119	94.4	75.8	113.6
201	95.0	81.0	121.4





#19
 n-Nitroso-di-n-propylamine
 Concen: 39.537 ng
 RT: 8.651 min Scan# 946
 Delta R.T. 0.000 min
 Lab File: BM036190.D
 Acq: 10 Aug 2022 13:45

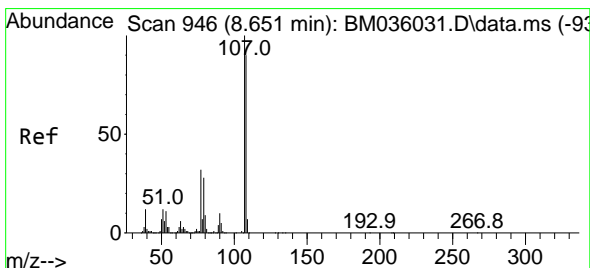
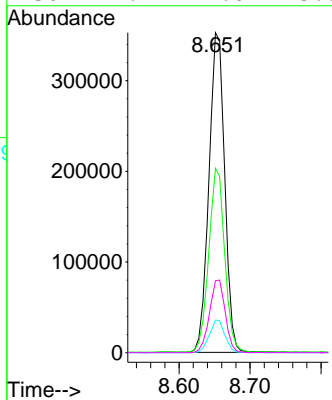
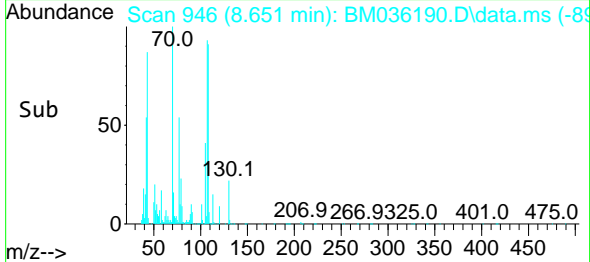
Instrument :
 BNA_M
 Client Sample Id :
 PB146797BS



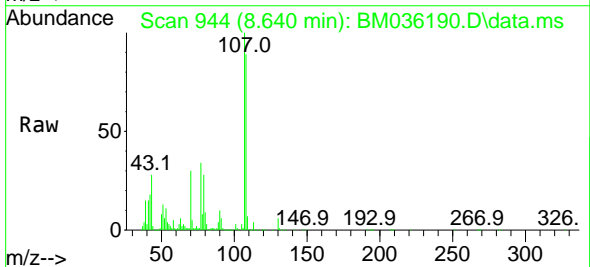
Tgt Ion: 70 Resp: 543849
 Ion Ratio Lower Upper
 70 100
 42 57.6 55.4 83.2
 101 10.2 7.8 11.6
 130 22.4 17.0 25.6

Manual Integrations
 APPROVED

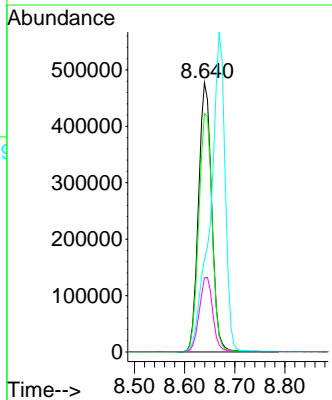
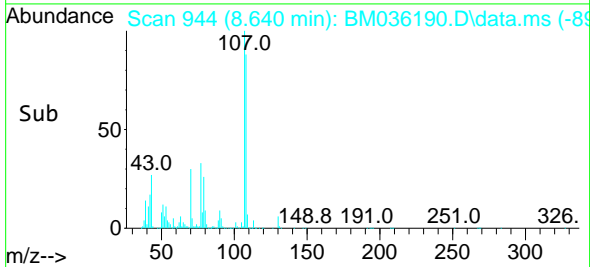
Reviewed By :Christian Giraldo 08/11/2022
 Supervised By :Jagrut Upadhyay 08/11/2022

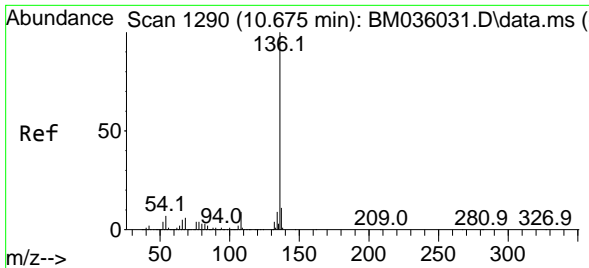


#20
 3+4-Methylphenols
 Concen: 42.494 ng
 RT: 8.640 min Scan# 944
 Delta R.T. 0.000 min
 Lab File: BM036190.D
 Acq: 10 Aug 2022 13:45



Tgt Ion: 107 Resp: 871402
 Ion Ratio Lower Upper
 107 100
 108 88.5 69.3 109.3
 77 34.4 15.8 55.8
 79 27.5 12.3 52.3





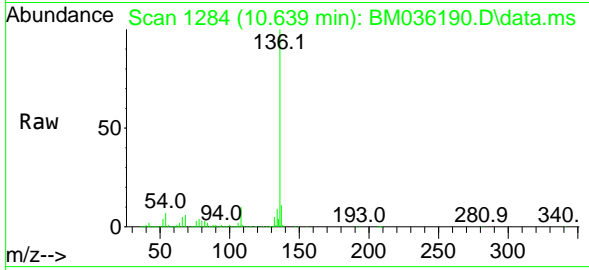
#21
 Naphthalene-d8
 Concen: 20.000 ng
 RT: 10.639 min Scan# 11
 Delta R.T. 0.000 min
 Lab File: BM036190.D
 Acq: 10 Aug 2022 13:45

Instrument :

BNA_M

Client Sample Id :

PB146797BS

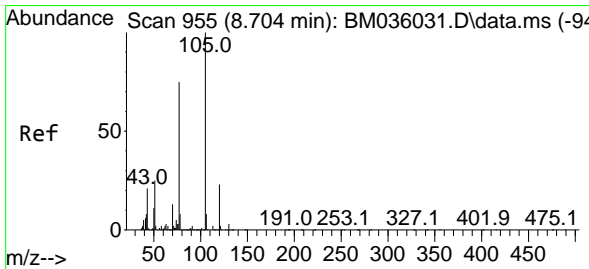
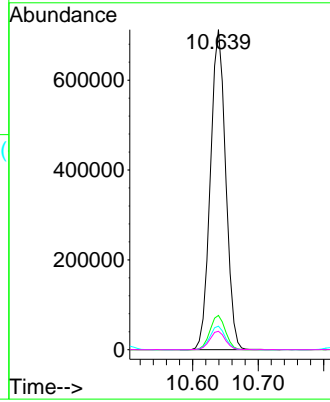
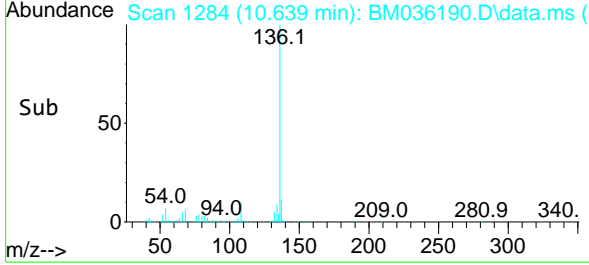


Tgt Ion:136 Resp: 115434
 Ion Ratio Lower Upper
 136 100
 137 10.7 8.9 13.3
 54 7.4 7.0 10.4
 68 5.8 4.3 6.5

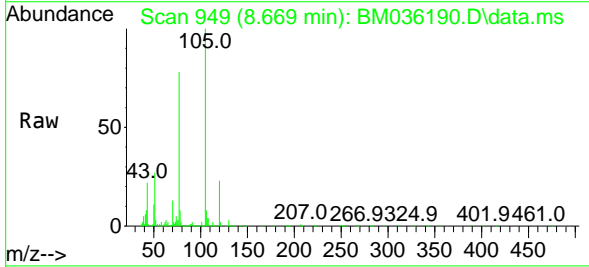
Manual Integrations

APPROVED

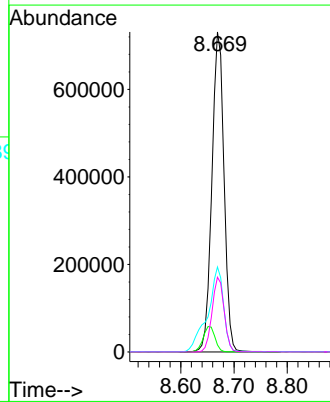
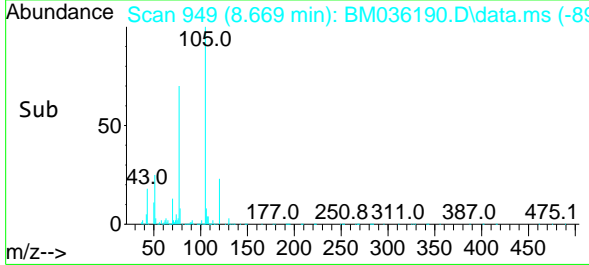
Reviewed By :Christian Giraldo 08/11/2022
 Supervised By :Jagrut Upadhyay 08/11/2022

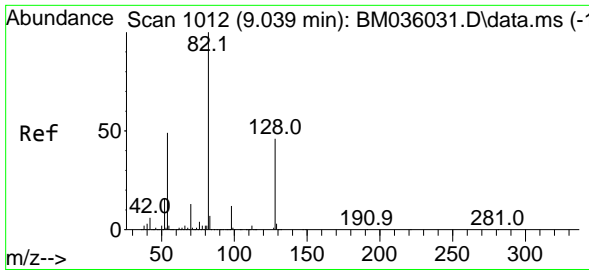


#22
 Acetophenone
 Concen: 42.353 ng
 RT: 8.669 min Scan# 949
 Delta R.T. 0.000 min
 Lab File: BM036190.D
 Acq: 10 Aug 2022 13:45



Tgt Ion:105 Resp: 1157327
 Ion Ratio Lower Upper
 105 100
 71 2.2 5.0 7.4#
 51 26.6 25.6 38.4
 120 23.4 17.8 26.8





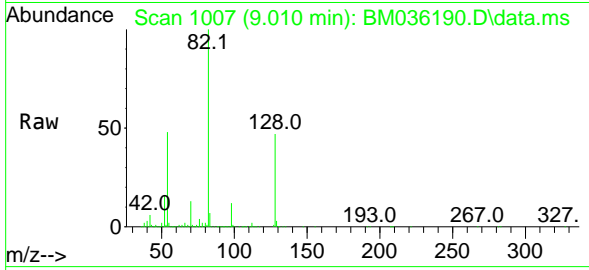
#23
 Nitrobenzene-d5
 Concen: 83.632 ng
 RT: 9.010 min Scan# 1010
 Delta R.T. 0.006 min
 Lab File: BM036190.D
 Acq: 10 Aug 2022 13:45

Instrument :

BNA_M

ClientSampleId :

PB146797BS

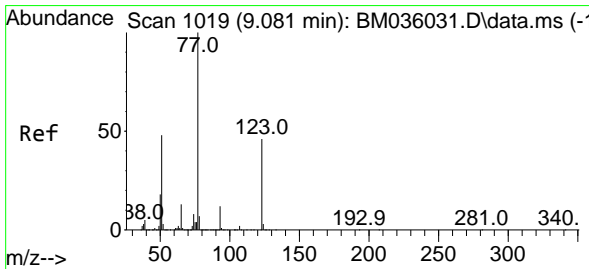
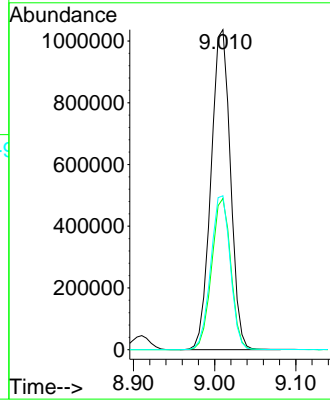
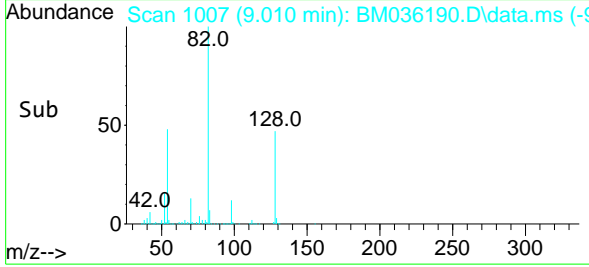


Tgt Ion: 82 Resp: 172464
 Ion Ratio Lower Upper
 82 100
 128 47.3 33.7 50.5
 54 48.1 43.2 64.8

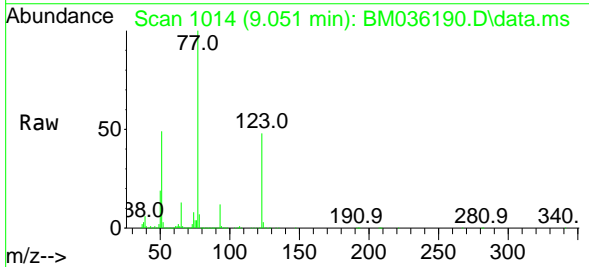
Manual Integrations

APPROVED

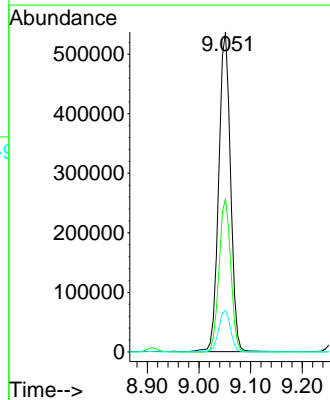
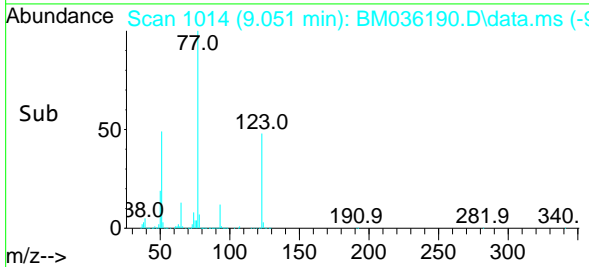
Reviewed By :Christian Giraldo 08/11/2022
 Supervised By :Jagrut Upadhyay 08/11/2022

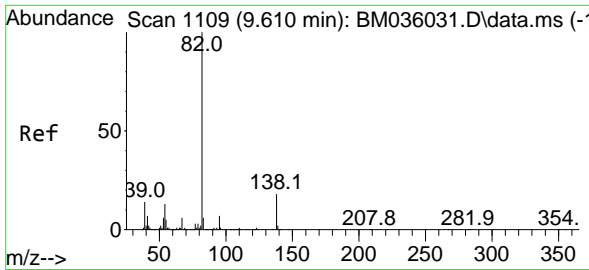


#24
 Nitrobenzene
 Concen: 43.796 ng
 RT: 9.051 min Scan# 1014
 Delta R.T. 0.006 min
 Lab File: BM036190.D
 Acq: 10 Aug 2022 13:45



Tgt Ion: 77 Resp: 849047
 Ion Ratio Lower Upper
 77 100
 123 47.8 36.2 54.4
 65 13.0 11.4 17.0





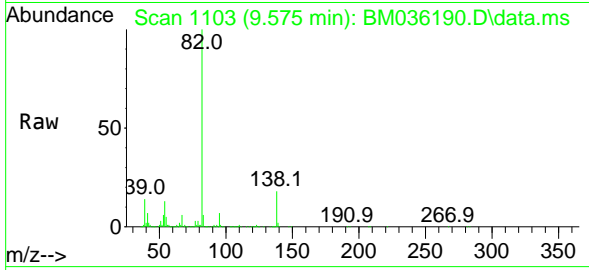
#25
 Isophorone
 Concen: 44.005 ng
 RT: 9.575 min Scan# 1103
 Delta R.T. 0.000 min
 Lab File: BM036190.D
 Acq: 10 Aug 2022 13:45

Instrument :

BNA_M

Client Sample Id :

PB146797BS

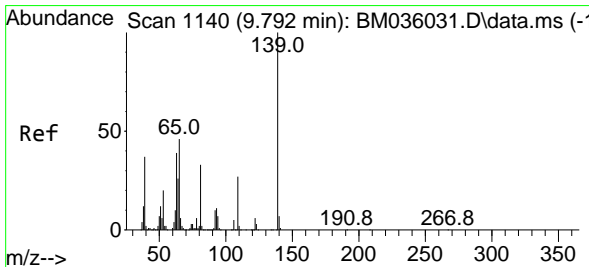
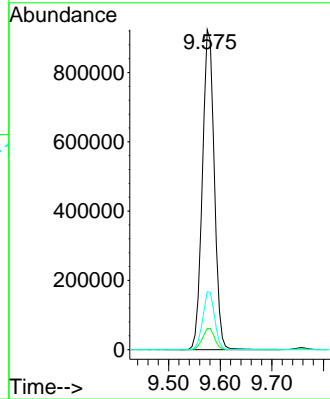
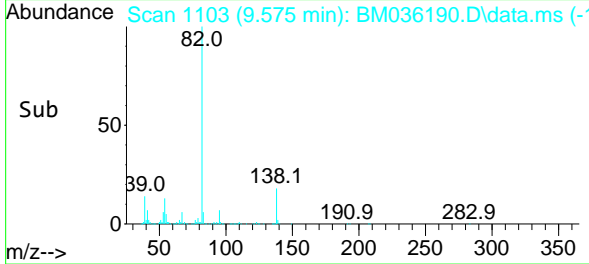


Tgt Ion: 82 Resp: 147626
 Ion Ratio Lower Upper
 82 100
 95 6.6 6.4 9.6
 138 18.1 14.2 21.4

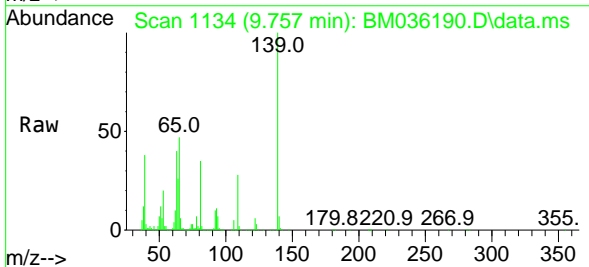
Manual Integrations

APPROVED

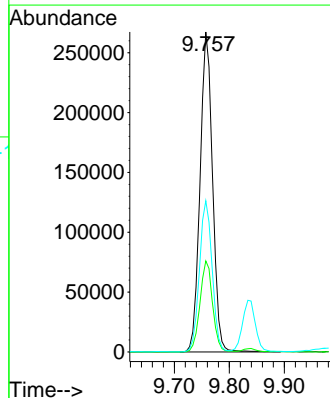
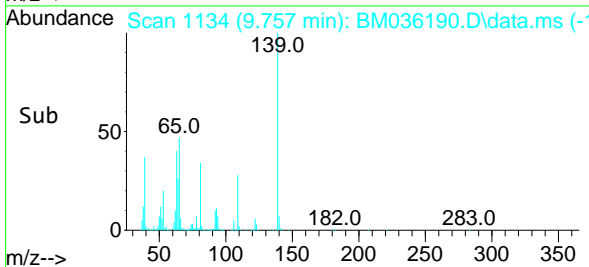
Reviewed By :Christian Giraldo 08/11/2022
 Supervised By :Jagrut Upadhyay 08/11/2022

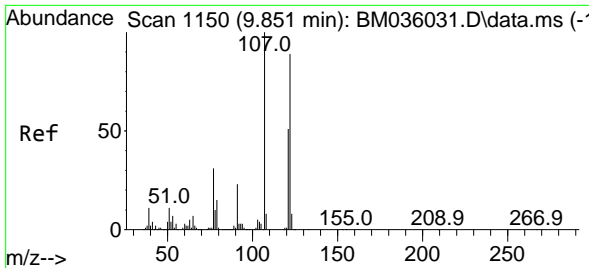


#26
 2-Nitrophenol
 Concen: 46.302 ng
 RT: 9.757 min Scan# 1134
 Delta R.T. 0.000 min
 Lab File: BM036190.D
 Acq: 10 Aug 2022 13:45



Tgt Ion:139 Resp: 423382
 Ion Ratio Lower Upper
 139 100
 109 28.4 25.6 38.4
 65 47.2 43.2 64.8





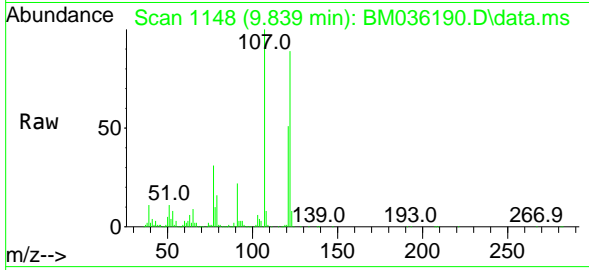
#27
 2,4-Dimethylphenol
 Concen: 49.731 ng
 RT: 9.839 min Scan# 1150
 Delta R.T. 0.006 min
 Lab File: BM036190.D
 Acq: 10 Aug 2022 13:45

Instrument :

BNA_M

ClientSampleId :

PB146797BS

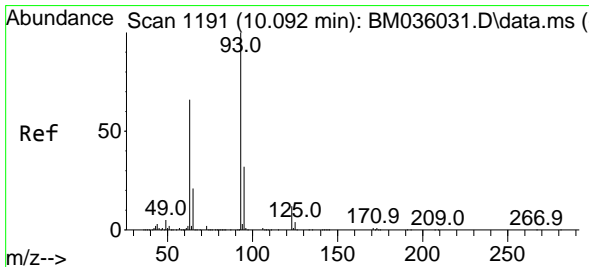
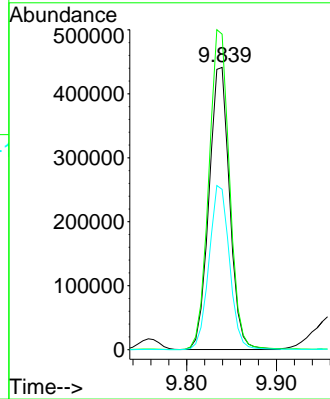
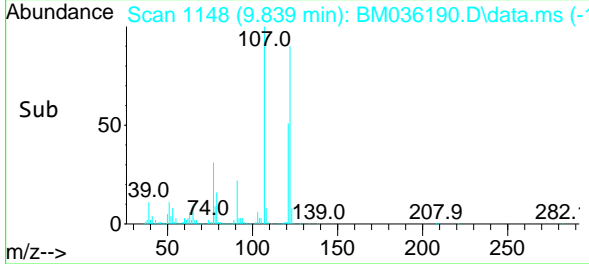


Tgt Ion:122 Resp: 704418
 Ion Ratio Lower Upper
 122 100
 107 111.8 92.4 138.6
 121 56.8 47.4 71.0

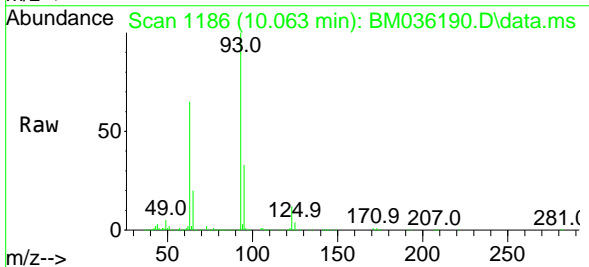
Manual Integrations

APPROVED

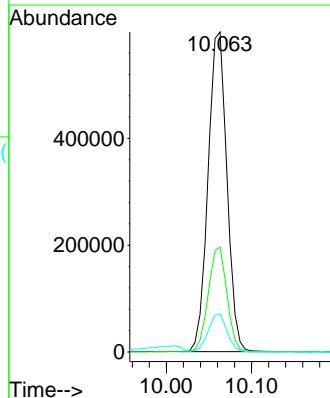
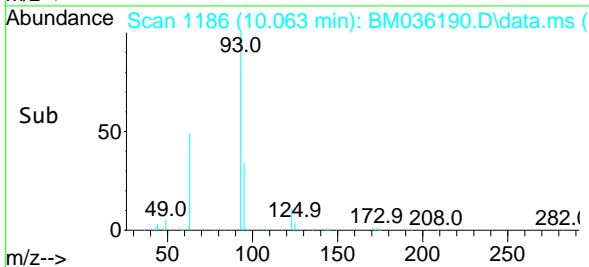
Reviewed By :Christian Giraldo 08/11/2022
 Supervised By :Jagrut Upadhyay 08/11/2022

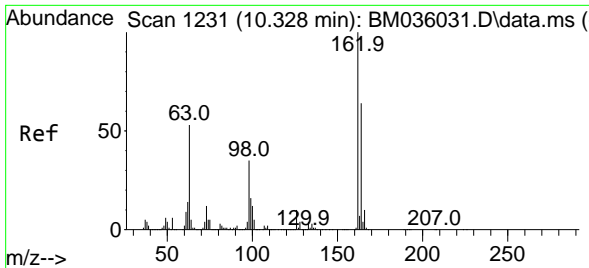


#28
 bis(2-Chloroethoxy)methane
 Concen: 38.525 ng
 RT: 10.063 min Scan# 1186
 Delta R.T. 0.006 min
 Lab File: BM036190.D
 Acq: 10 Aug 2022 13:45



Tgt Ion: 93 Resp: 920782
 Ion Ratio Lower Upper
 93 100
 95 32.8 26.1 39.1
 123 11.9 9.0 13.4





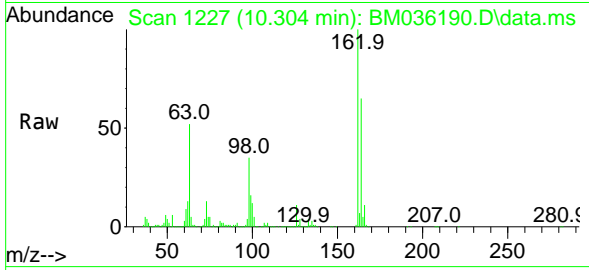
#29
 2,4-Dichlorophenol
 Concen: 43.266 ng
 RT: 10.304 min Scan# 11
 Delta R.T. 0.000 min
 Lab File: BM036190.D
 Acq: 10 Aug 2022 13:45

Instrument :

BNA_M

Client Sample Id :

PB146797BS

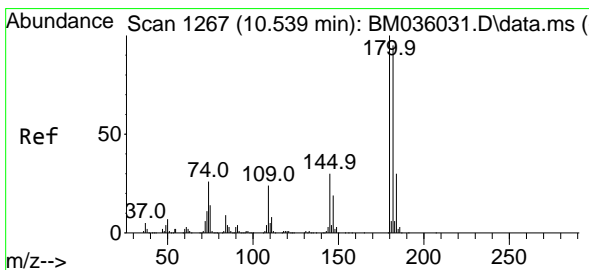
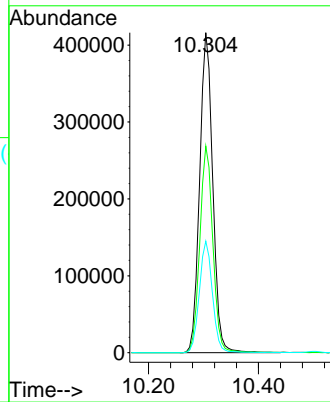
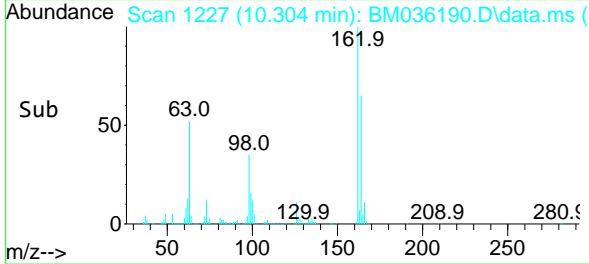


Tgt Ion:162 Resp: 68919
 Ion Ratio Lower Upper
 162 100
 164 64.6 44.2 84.2
 98 34.8 15.0 55.0

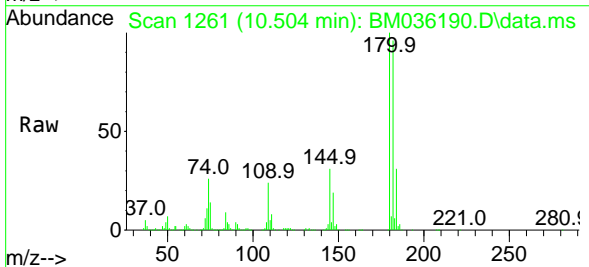
Manual Integrations

APPROVED

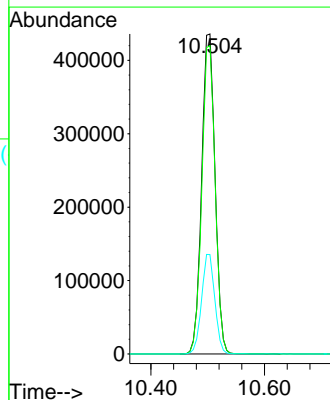
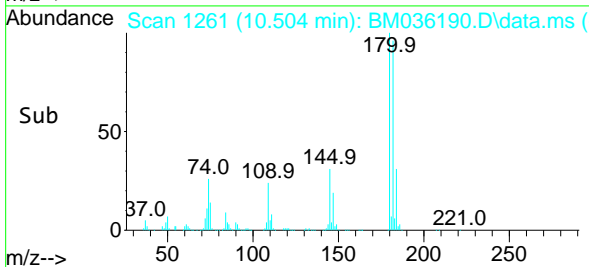
Reviewed By :Christian Giraldo 08/11/2022
 Supervised By :Jagrut Upadhyay 08/11/2022

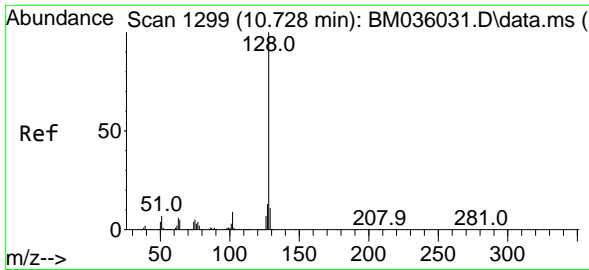


#30
 1,2,4-Trichlorobenzene
 Concen: 39.595 ng
 RT: 10.504 min Scan# 1261
 Delta R.T. 0.006 min
 Lab File: BM036190.D
 Acq: 10 Aug 2022 13:45



Tgt Ion:180 Resp: 714749
 Ion Ratio Lower Upper
 180 100
 182 96.3 77.9 116.9
 145 31.0 25.0 37.6





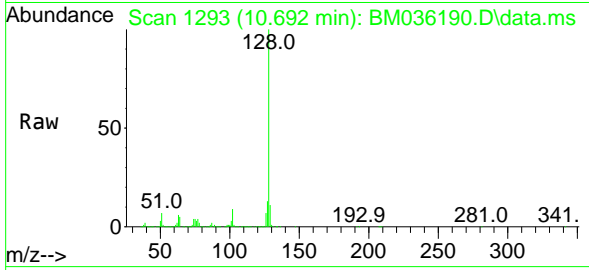
#31
 Naphthalene
 Concen: 41.830 ng
 RT: 10.692 min Scan# 1177
 Delta R.T. 0.006 min
 Lab File: BM036190.D
 Acq: 10 Aug 2022 13:45

Instrument :

BNA_M

ClientSampleId :

PB146797BS

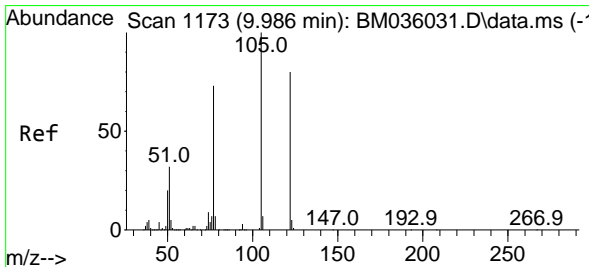
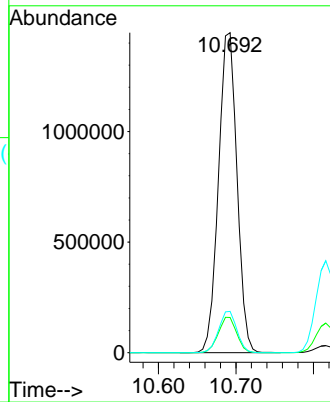
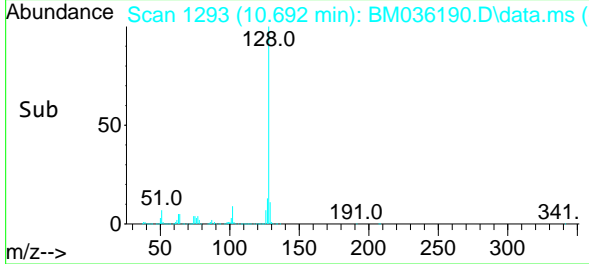


Tgt Ion:128 Resp: 240067
 Ion Ratio Lower Upper
 128 100
 129 11.0 8.7 13.1
 127 12.9 10.6 16.0

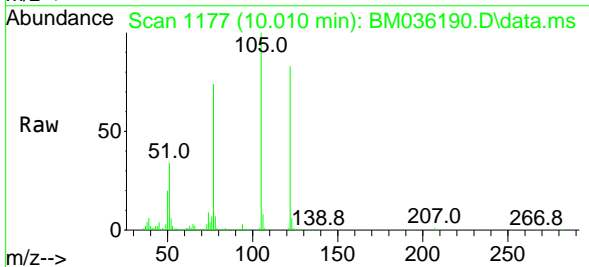
Manual Integrations

APPROVED

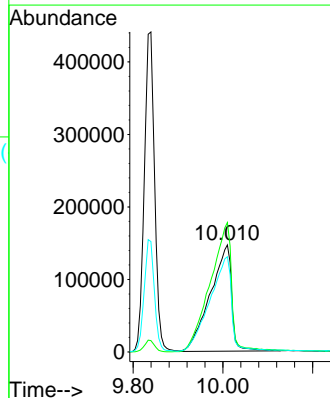
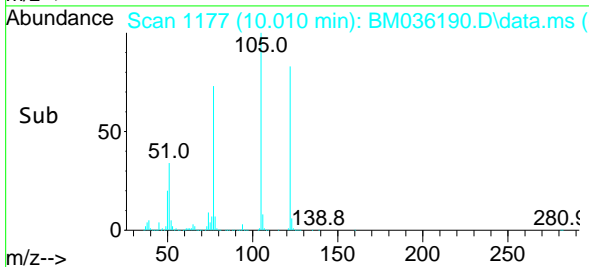
Reviewed By :Christian Giraldo 08/11/2022
 Supervised By :Jagrut Upadhyay 08/11/2022

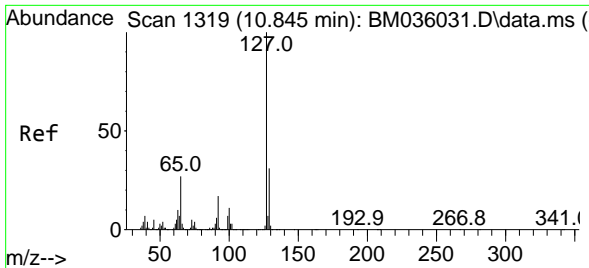


#32
 Benzoic acid
 Concen: 43.276 ng
 RT: 10.010 min Scan# 1177
 Delta R.T. 0.018 min
 Lab File: BM036190.D
 Acq: 10 Aug 2022 13:45



Tgt Ion:122 Resp: 485906
 Ion Ratio Lower Upper
 122 100
 105 120.9 105.7 145.7
 77 89.0 80.0 120.0





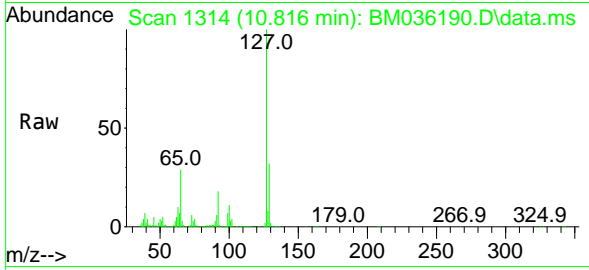
#33
 4-Chloroaniline
 Concen: 32.610 ng
 RT: 10.816 min Scan# 11
 Delta R.T. 0.006 min
 Lab File: BM036190.D
 Acq: 10 Aug 2022 13:45

Instrument :

BNA_M

Client Sample Id :

PB146797BS

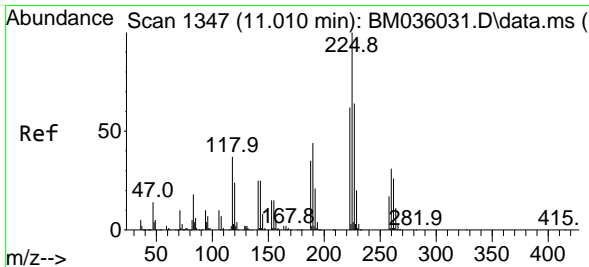
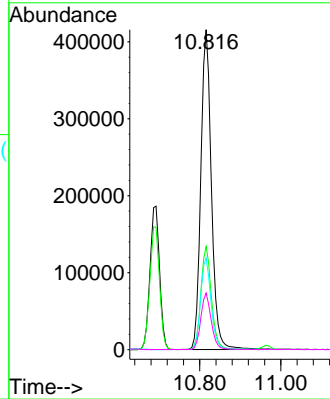
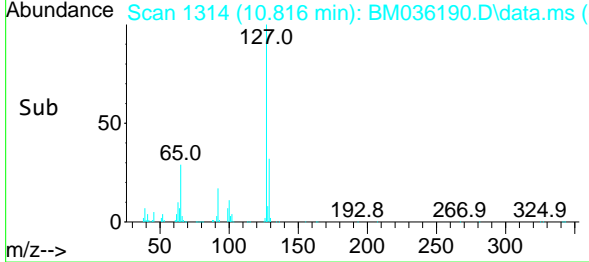


Tgt Ion:127 Resp: 754249
 Ion Ratio Lower Upper
 127 100
 129 32.3 25.7 38.5
 65 28.7 26.6 40.0
 92 17.7 15.1 22.7

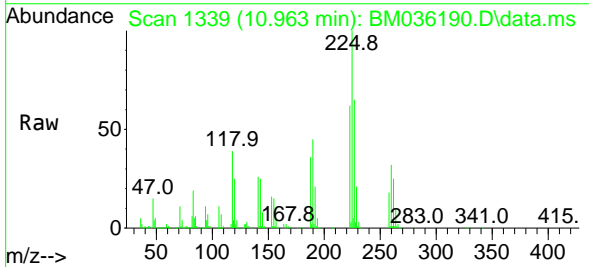
Manual Integrations

APPROVED

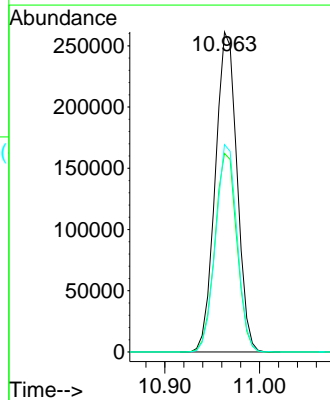
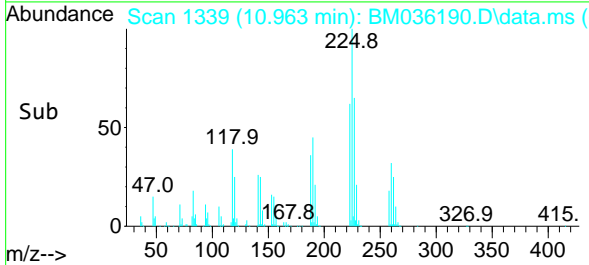
Reviewed By :Christian Giraldo 08/11/2022
 Supervised By :Jagrut Upadhyay 08/11/2022

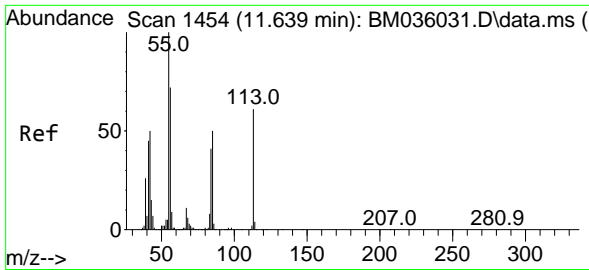


#34
 Hexachlorobutadiene
 Concen: 39.201 ng
 RT: 10.963 min Scan# 1339
 Delta R.T. 0.000 min
 Lab File: BM036190.D
 Acq: 10 Aug 2022 13:45



Tgt Ion:225 Resp: 415817
 Ion Ratio Lower Upper
 225 100
 223 62.0 50.8 76.2
 227 64.8 52.7 79.1





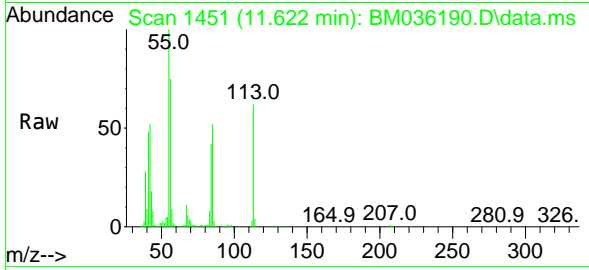
#35
 Caprolactam
 Concen: 41.840 ng
 RT: 11.622 min Scan# 1454
 Delta R.T. 0.012 min
 Lab File: BM036190.D
 Acq: 10 Aug 2022 13:45

Instrument :

BNA_M

ClientSampleId :

PB146797BS

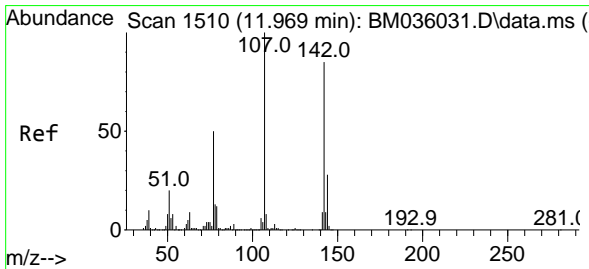
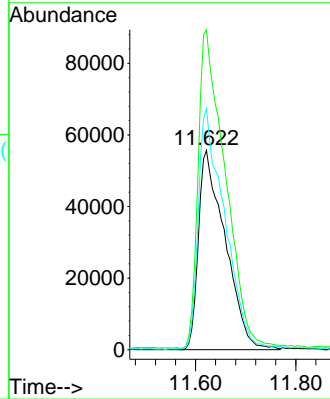
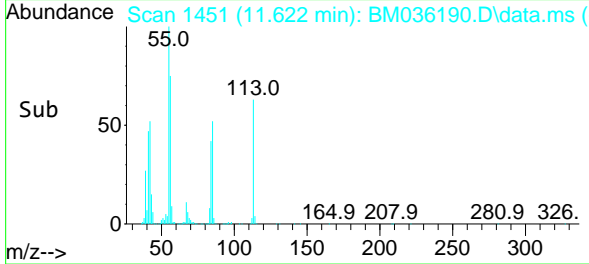


Tgt Ion:113 Resp: 205280
 Ion Ratio Lower Upper
 113 100
 55 160.5 150.1 190.1
 56 120.9 111.7 151.7

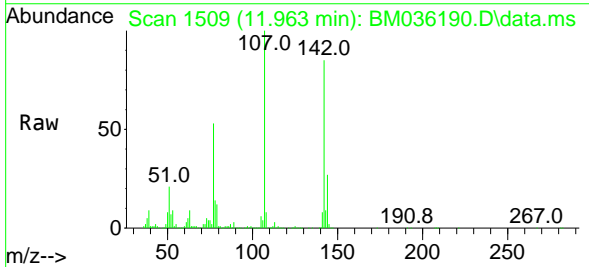
Manual Integrations

APPROVED

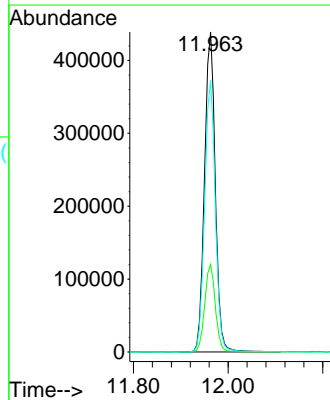
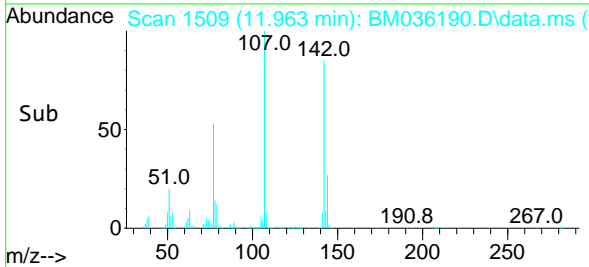
Reviewed By :Christian Giraldo 08/11/2022
 Supervised By :Jagrut Upadhyay 08/11/2022

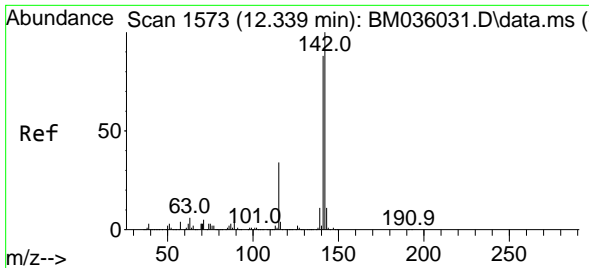


#36
 4-Chloro-3-methylphenol
 Concen: 41.381 ng
 RT: 11.963 min Scan# 1509
 Delta R.T. 0.006 min
 Lab File: BM036190.D
 Acq: 10 Aug 2022 13:45



Tgt Ion:107 Resp: 692837
 Ion Ratio Lower Upper
 107 100
 144 27.3 21.4 32.0
 142 84.8 66.7 100.1





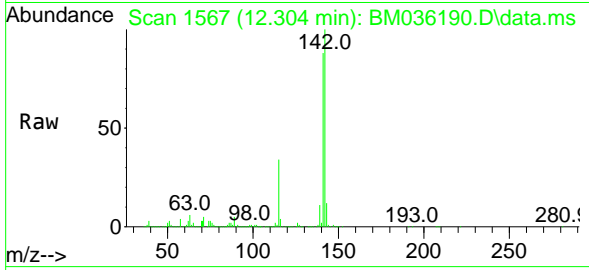
#37
 2-Methylnaphthalene
 Concen: 40.783 ng
 RT: 12.304 min Scan# 11
 Delta R.T. 0.006 min
 Lab File: BM036190.D
 Acq: 10 Aug 2022 13:45

Instrument :

BNA_M

ClientSampleId :

PB146797BS

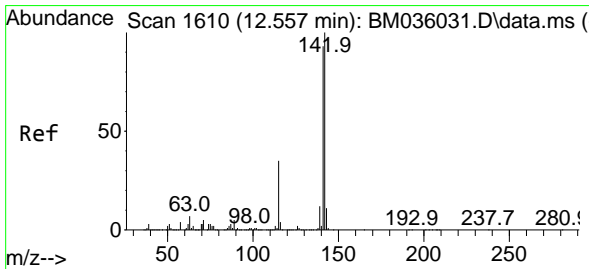
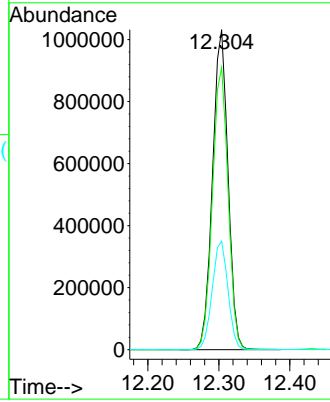
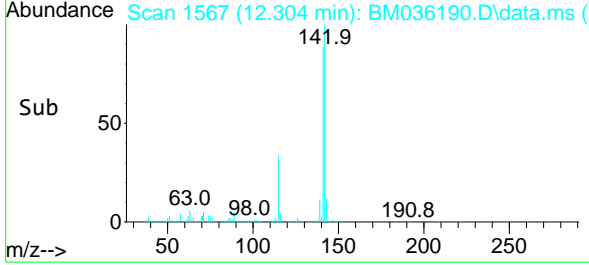


Tgt Ion:142 Resp: 1557534
 Ion Ratio Lower Upper
 142 100
 141 88.2 72.4 108.6
 115 33.9 29.6 44.4

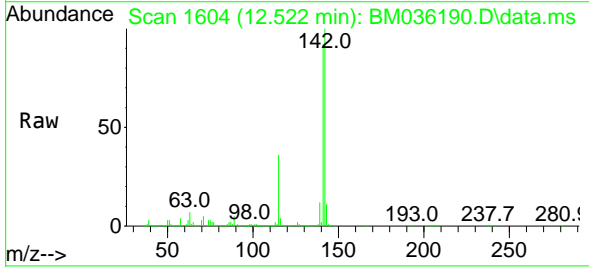
Manual Integrations

APPROVED

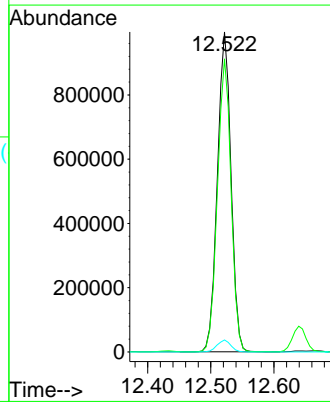
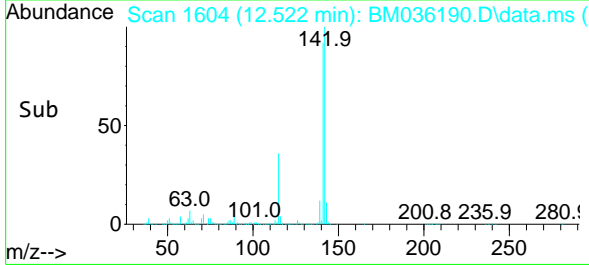
Reviewed By :Christian Giraldo 08/11/2022
 Supervised By :Jagrut Upadhyay 08/11/2022

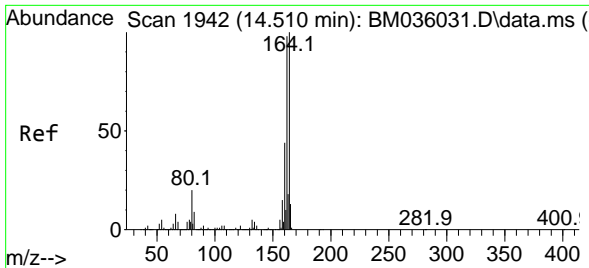


#38
 1-Methylnaphthalene
 Concen: 39.887 ng
 RT: 12.522 min Scan# 1604
 Delta R.T. 0.000 min
 Lab File: BM036190.D
 Acq: 10 Aug 2022 13:45



Tgt Ion:142 Resp: 1491792
 Ion Ratio Lower Upper
 142 100
 141 91.6 75.0 112.4
 116 3.8 3.4 5.2





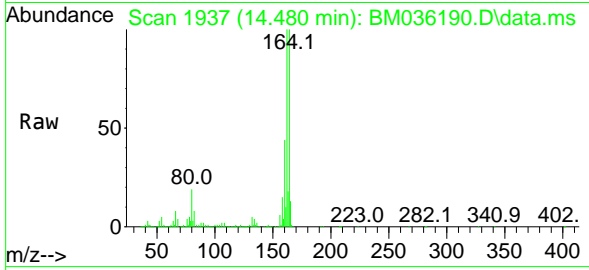
#39
 Acenaphthene-d10
 Concen: 20.000 ng
 RT: 14.480 min Scan# 1942
 Delta R.T. 0.006 min
 Lab File: BM036190.D
 Acq: 10 Aug 2022 13:45

Instrument :

BNA_M

ClientSampleId :

PB146797BS

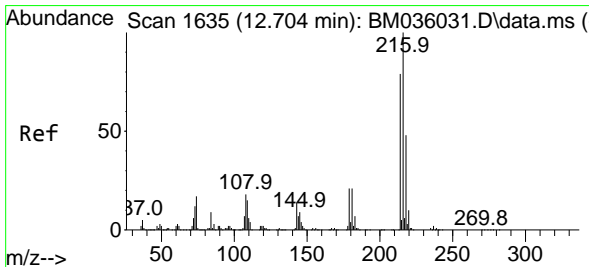
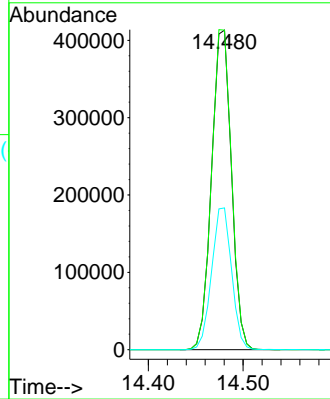
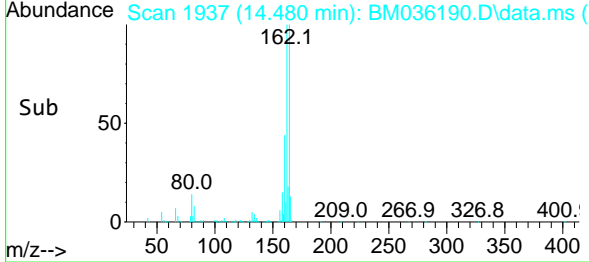


Tgt Ion:164 Resp: 60236
 Ion Ratio Lower Upper
 164 100
 162 100.0 83.0 124.6
 160 44.4 37.0 55.4

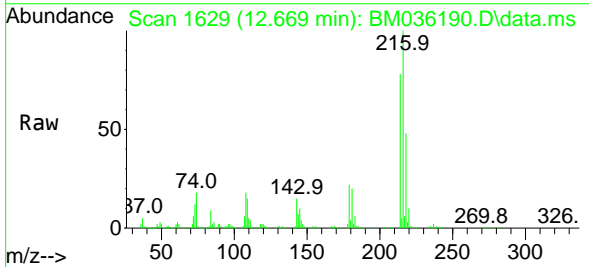
Manual Integrations

APPROVED

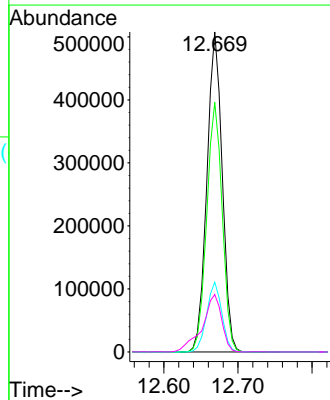
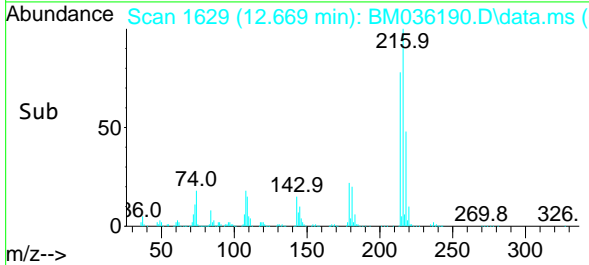
Reviewed By :Christian Giraldo 08/11/2022
 Supervised By :Jagrut Upadhyay 08/11/2022

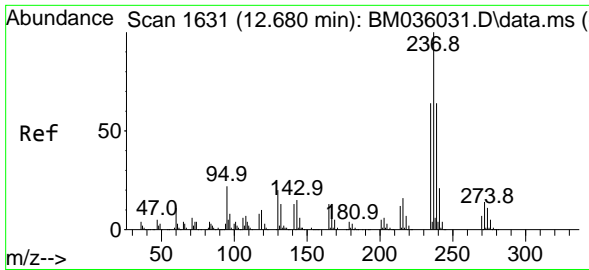


#40
 1,2,4,5-Tetrachlorobenzene
 Concen: 44.794 ng
 RT: 12.669 min Scan# 1629
 Delta R.T. 0.000 min
 Lab File: BM036190.D
 Acq: 10 Aug 2022 13:45



Tgt Ion:216 Resp: 731524
 Ion Ratio Lower Upper
 216 100
 214 78.7 62.6 94.0
 179 21.6 18.2 27.2
 108 22.7 17.0 25.6





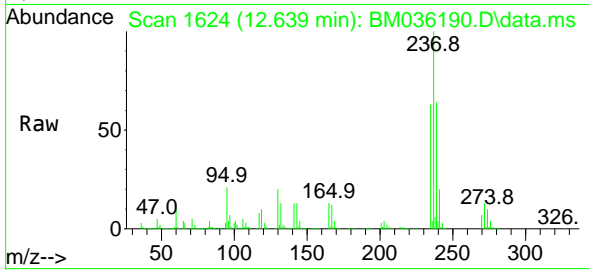
#41
 Hexachlorocyclopentadiene
 Concen: 107.027 ng
 RT: 12.639 min Scan# 10
 Delta R.T. 0.000 min
 Lab File: BM036190.D
 Acq: 10 Aug 2022 13:45

Instrument :

BNA_M

ClientSampleId :

PB146797BS

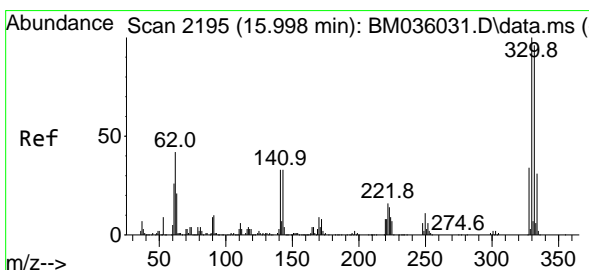
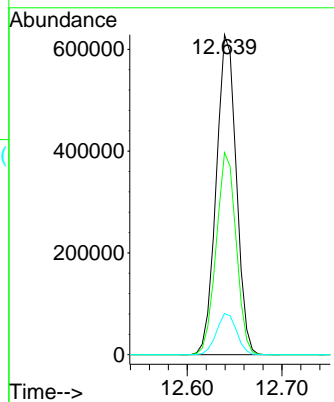
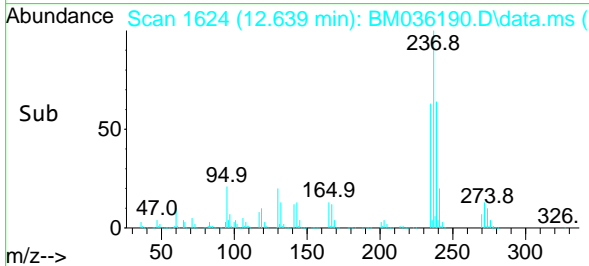


Tgt Ion:237 Resp: 92569
 Ion Ratio Lower Upper
 237 100
 235 63.2 43.8 83.8
 272 12.9 0.0 32.5

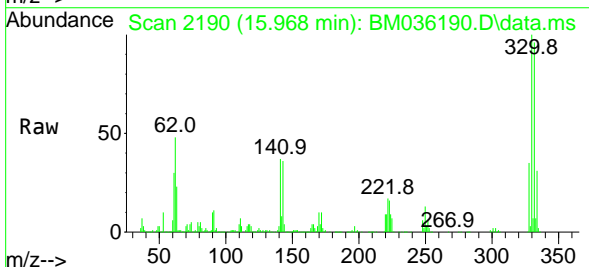
Manual Integrations

APPROVED

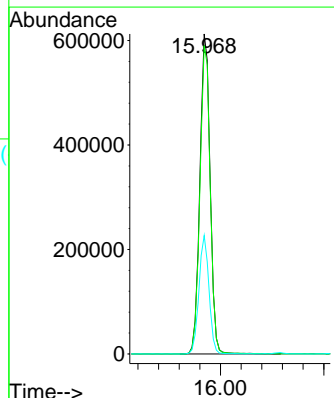
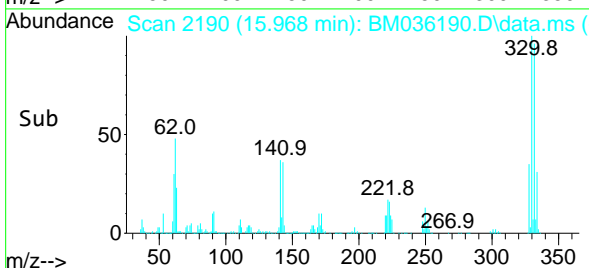
Reviewed By :Christian Giraldo 08/11/2022
 Supervised By :Jagrut Upadhyay 08/11/2022

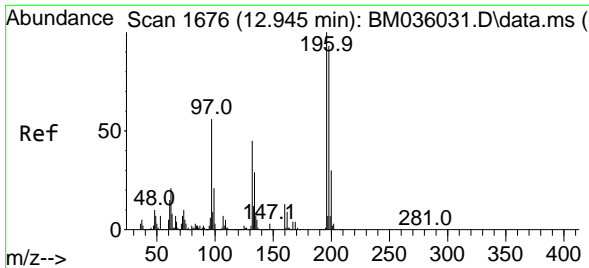


#42
 2,4,6-Tribromophenol
 Concen: 119.232 ng
 RT: 15.968 min Scan# 2190
 Delta R.T. 0.000 min
 Lab File: BM036190.D
 Acq: 10 Aug 2022 13:45



Tgt Ion:330 Resp: 842554
 Ion Ratio Lower Upper
 330 100
 332 96.5 77.0 115.4
 141 36.4 35.3 52.9





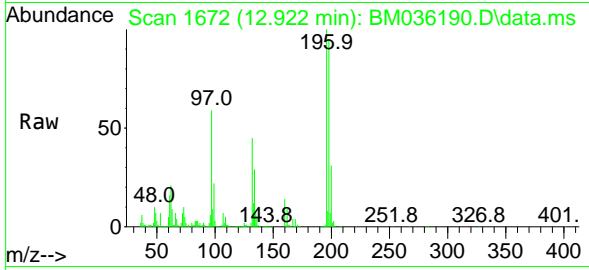
#43
 2,4,6-Trichlorophenol
 Concen: 44.696 ng
 RT: 12.922 min Scan# 1
 Delta R.T. 0.000 min
 Lab File: BM036190.D
 Acq: 10 Aug 2022 13:45

Instrument :

BNA_M

ClientSampleId :

PB146797BS

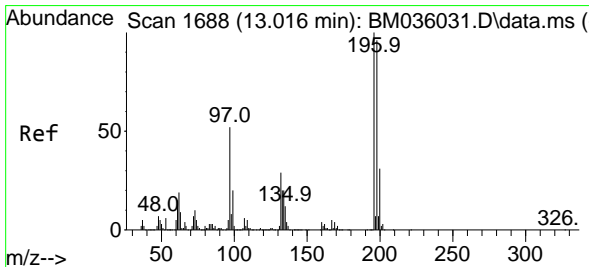
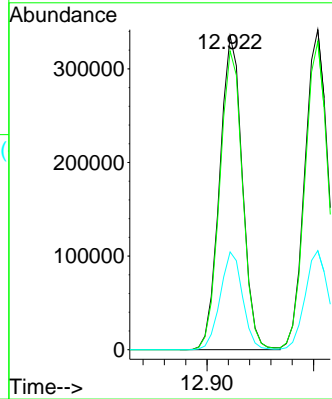
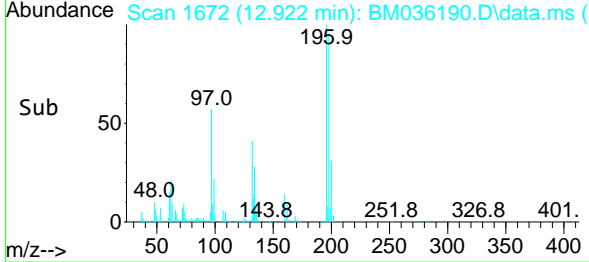


Tgt Ion:196 Resp: 49667
 Ion Ratio Lower Upper
 196 100
 198 95.2 75.8 113.6
 200 31.2 24.9 37.3

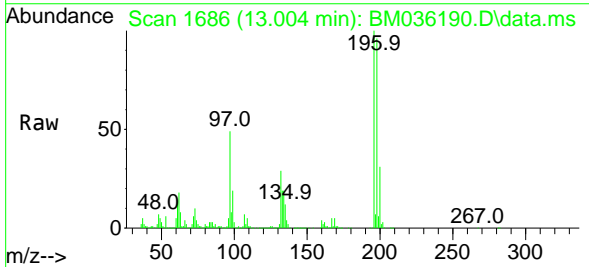
Manual Integrations

APPROVED

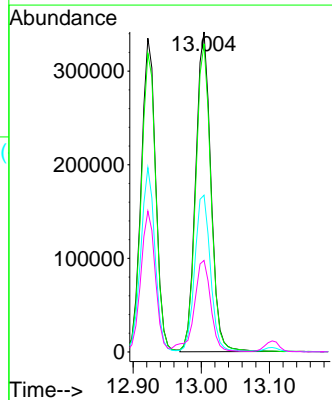
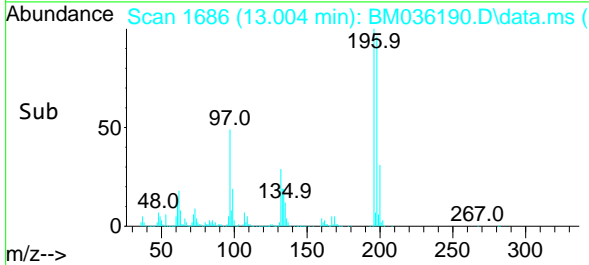
Reviewed By :Christian Giraldo 08/11/2022
 Supervised By :Jagrut Upadhyay 08/11/2022

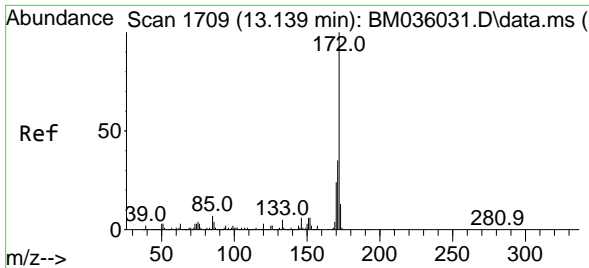


#44
 2,4,5-Trichlorophenol
 Concen: 45.258 ng
 RT: 13.004 min Scan# 1686
 Delta R.T. 0.000 min
 Lab File: BM036190.D
 Acq: 10 Aug 2022 13:45



Tgt Ion:196 Resp: 530889
 Ion Ratio Lower Upper
 196 100
 198 96.3 77.8 116.6
 97 49.0 43.4 65.2
 132 28.6 22.8 34.2





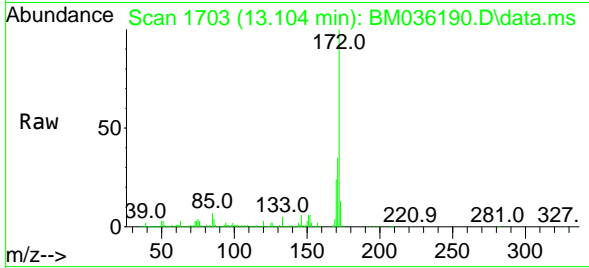
#45
 2-Fluorobiphenyl
 Concen: 85.881 ng
 RT: 13.104 min Scan# 1703
 Delta R.T. 0.000 min
 Lab File: BM036190.D
 Acq: 10 Aug 2022 13:45

Instrument :

BNA_M

ClientSampleId :

PB146797BS

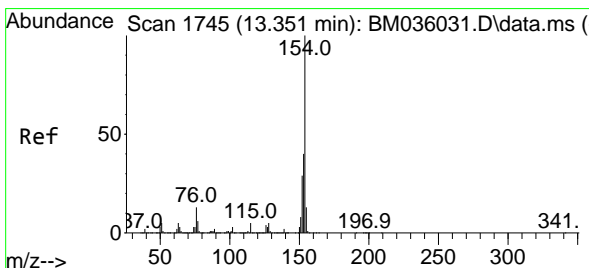
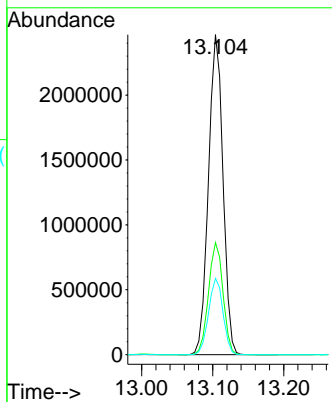
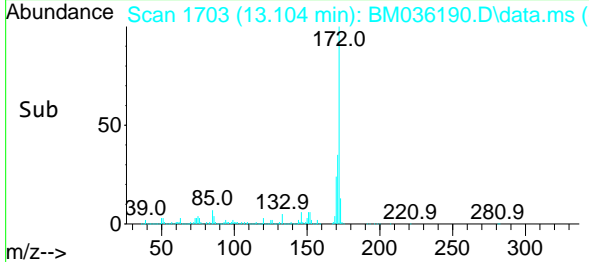


Tgt Ion:172 Resp: 3503720
 Ion Ratio Lower Upper
 172 100
 171 35.0 28.5 42.7
 170 23.8 18.7 28.1

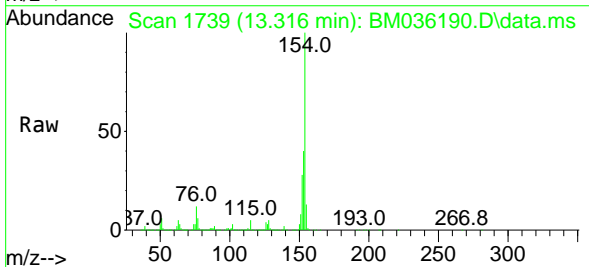
Manual Integrations

APPROVED

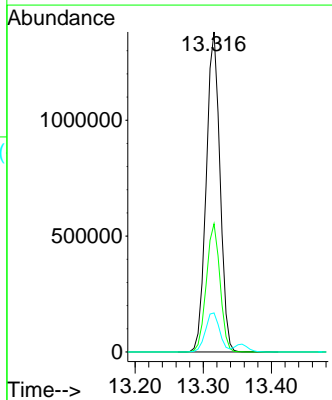
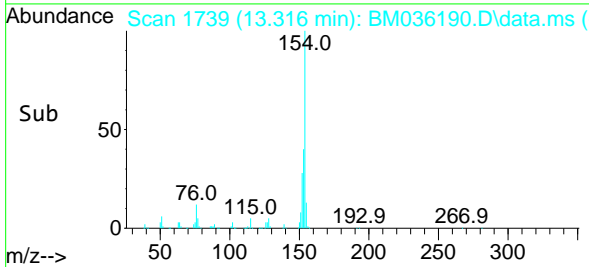
Reviewed By :Christian Giraldo 08/11/2022
 Supervised By :Jagrut Upadhyay 08/11/2022

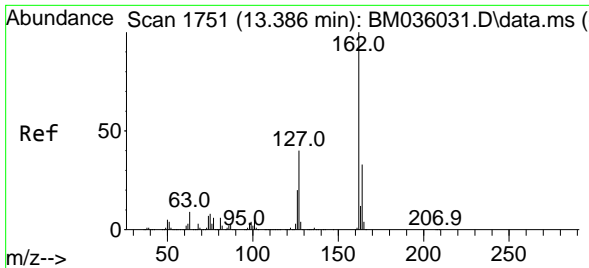


#46
 1,1'-Biphenyl
 Concen: 44.013 ng
 RT: 13.316 min Scan# 1739
 Delta R.T. 0.006 min
 Lab File: BM036190.D
 Acq: 10 Aug 2022 13:45



Tgt Ion:154 Resp: 1932124
 Ion Ratio Lower Upper
 154 100
 153 40.1 20.5 60.5
 76 12.2 0.0 31.8





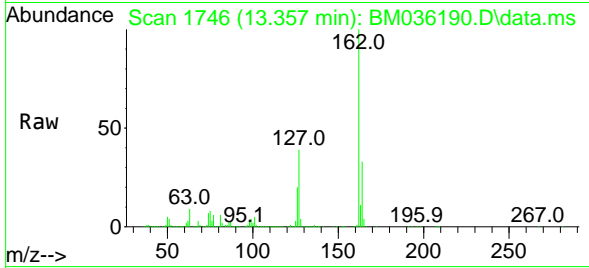
#47
 2-Chloronaphthalene
 Concen: 44.487 ng
 RT: 13.357 min Scan# 1746
 Delta R.T. 0.000 min
 Lab File: BM036190.D
 Acq: 10 Aug 2022 13:45

Instrument :

BNA_M

Client Sample Id :

PB146797BS

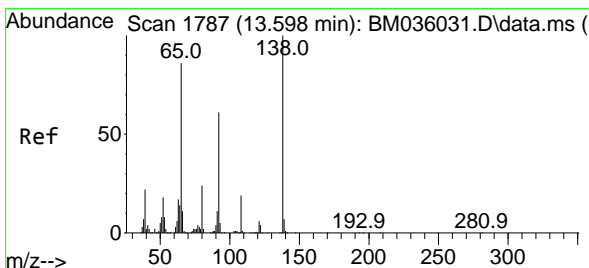
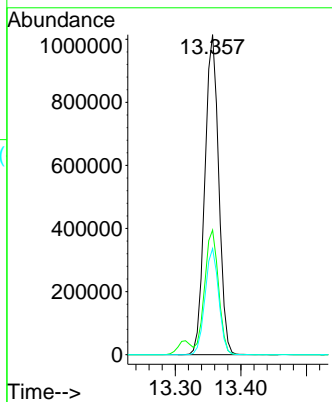
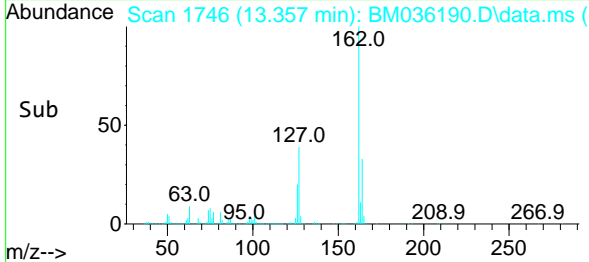


Tgt Ion: 162 Resp: 149466
 Ion Ratio Lower Upper
 162 100
 127 39.0 30.6 45.8
 164 33.1 26.6 39.8

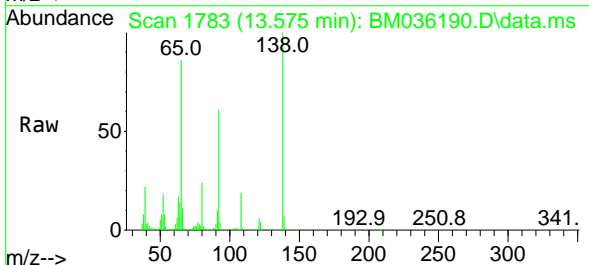
Manual Integrations

APPROVED

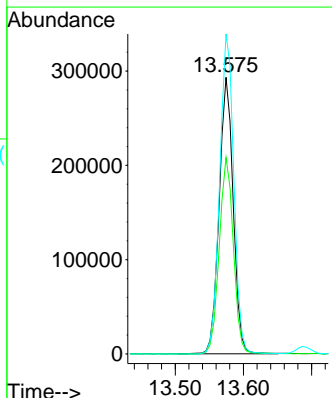
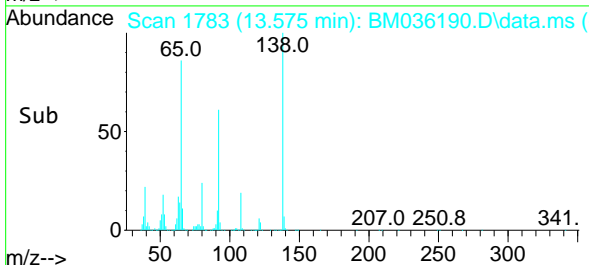
Reviewed By : Christian Giraldo 08/11/2022
 Supervised By : Jagrut Upadhyay 08/11/2022

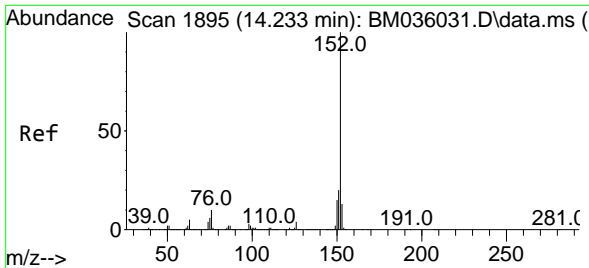


#48
 2-Nitroaniline
 Concen: 46.076 ng
 RT: 13.575 min Scan# 1783
 Delta R.T. 0.000 min
 Lab File: BM036190.D
 Acq: 10 Aug 2022 13:45



Tgt Ion: 65 Resp: 421883
 Ion Ratio Lower Upper
 65 100
 92 71.0 53.7 80.5
 138 115.7 83.9 125.9





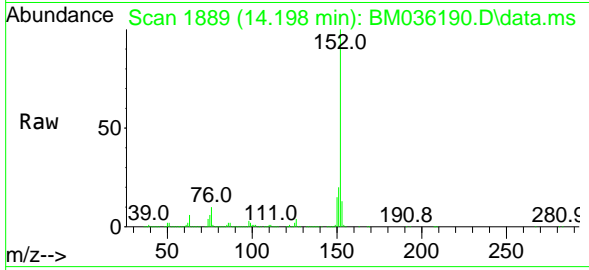
#49
 Acenaphthylene
 Concen: 45.098 ng
 RT: 14.198 min Scan# 1889
 Delta R.T. 0.000 min
 Lab File: BM036190.D
 Acq: 10 Aug 2022 13:45

Instrument :

BNA_M

Client Sample Id :

PB146797BS

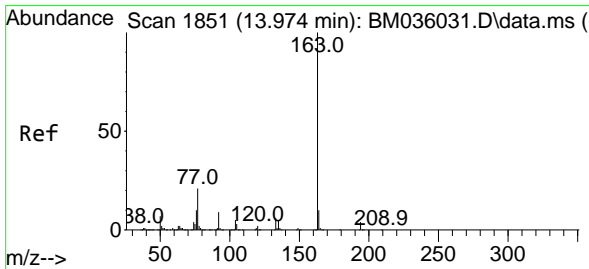
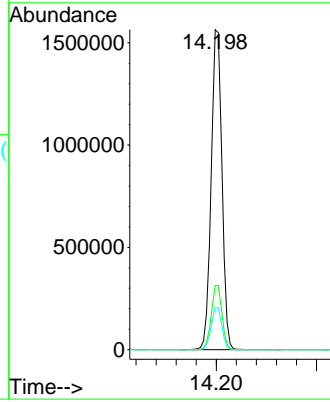
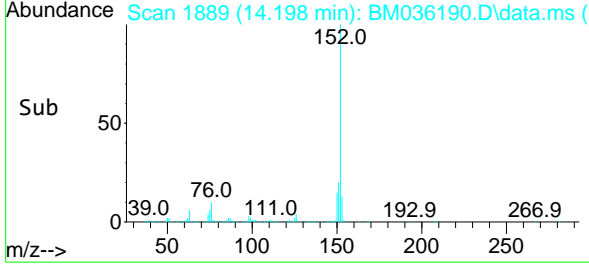


Tgt Ion:152 Resp: 2342174
 Ion Ratio Lower Upper
 152 100
 151 20.1 16.2 24.2
 153 13.3 10.5 15.7

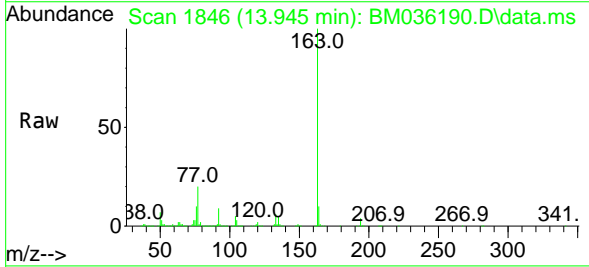
Manual Integrations

APPROVED

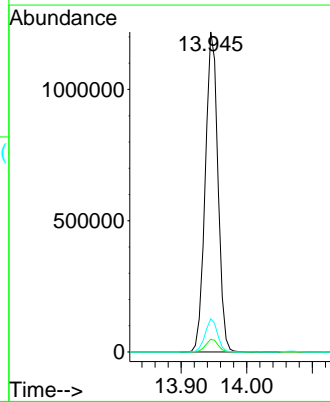
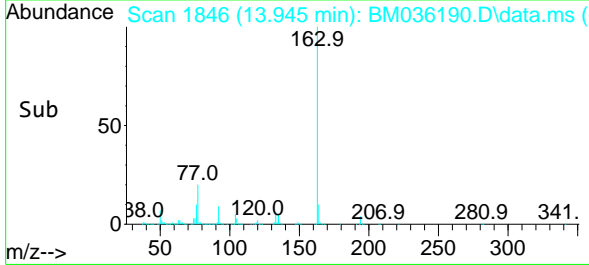
Reviewed By :Christian Giraldo 08/11/2022
 Supervised By :Jagrut Upadhyay 08/11/2022

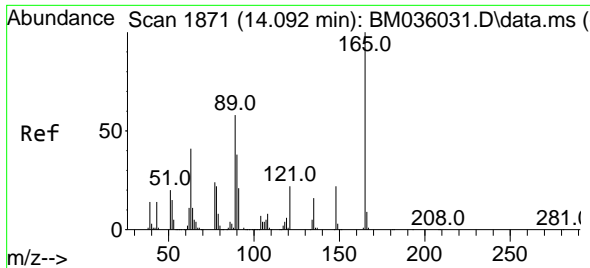


#50
 Dimethylphthalate
 Concen: 40.056 ng
 RT: 13.945 min Scan# 1846
 Delta R.T. 0.000 min
 Lab File: BM036190.D
 Acq: 10 Aug 2022 13:45



Tgt Ion:163 Resp: 1640822
 Ion Ratio Lower Upper
 163 100
 194 4.0 3.0 4.4
 164 10.4 8.4 12.6





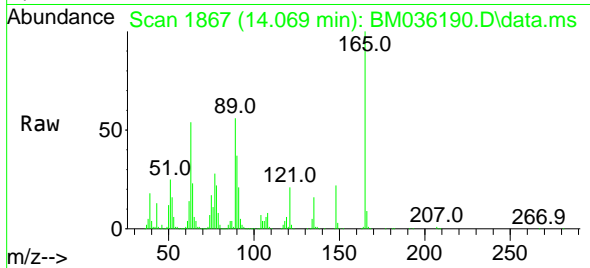
#51
 2,6-Dinitrotoluene
 Concen: 45.005 ng
 RT: 14.069 min Scan# 1871
 Delta R.T. 0.000 min
 Lab File: BM036190.D
 Acq: 10 Aug 2022 13:45

Instrument :

BNA_M

Client Sample Id :

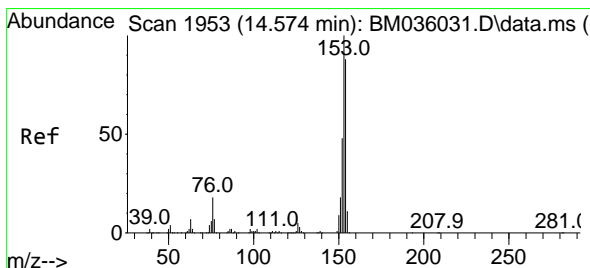
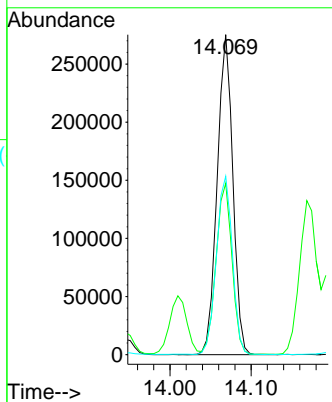
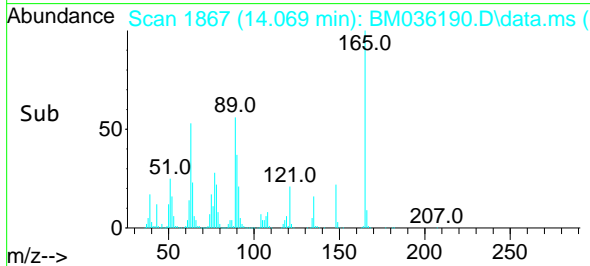
PB146797BS



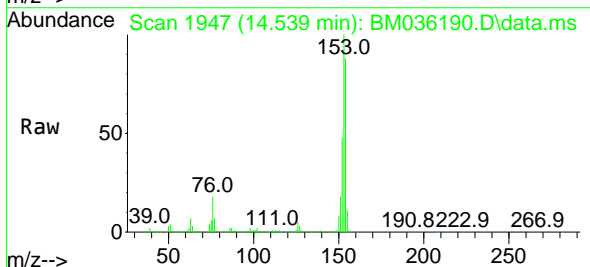
Tgt Ion:165 Resp: 369890
 Ion Ratio Lower Upper
 165 100
 63 53.5 50.2 75.2
 89 55.8 48.4 72.6

Manual Integrations
APPROVED

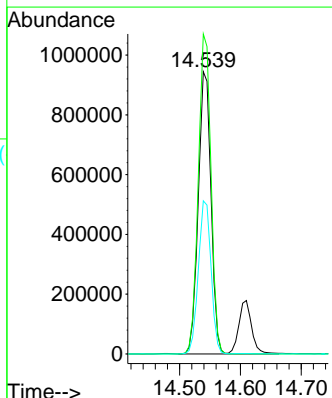
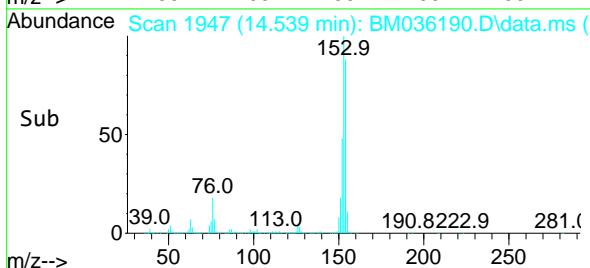
Reviewed By :Christian Giraldo 08/11/2022
 Supervised By :Jagrut Upadhyay 08/11/2022

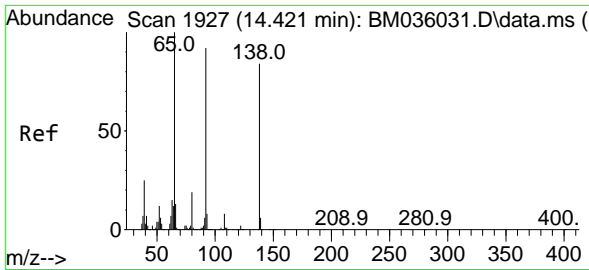


#52
 Acenaphthene
 Concen: 47.994 ng m
 RT: 14.539 min Scan# 1947
 Delta R.T. 0.000 min
 Lab File: BM036190.D
 Acq: 10 Aug 2022 13:45



Tgt Ion:154 Resp: 1630518
 Ion Ratio Lower Upper
 154 100
 153 113.3 91.0 136.6
 152 54.3 43.4 65.2





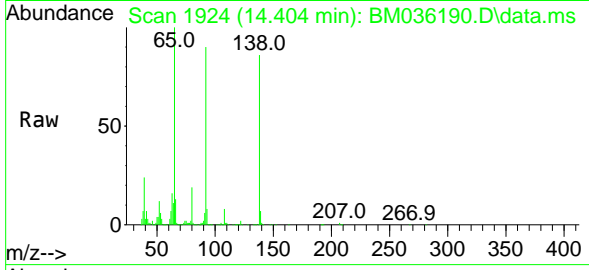
#53
 3-Nitroaniline
 Concen: 34.644 ng
 RT: 14.404 min Scan# 1924
 Delta R.T. 0.006 min
 Lab File: BM036190.D
 Acq: 10 Aug 2022 13:45

Instrument :

BNA_M

Client Sample Id :

PB146797BS

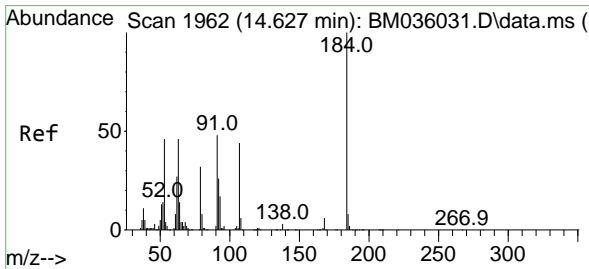
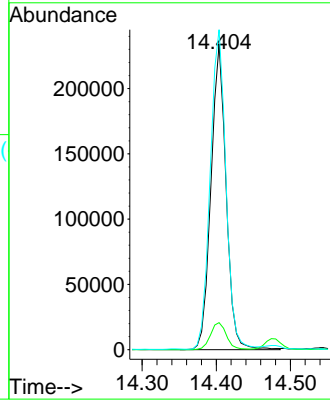
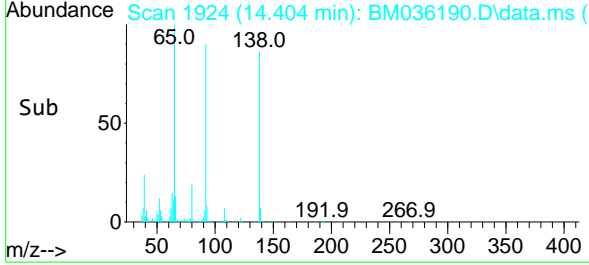


Tgt Ion:138 Resp: 332199
 Ion Ratio Lower Upper
 138 100
 108 8.9 8.7 13.1
 92 104.9 91.5 137.3

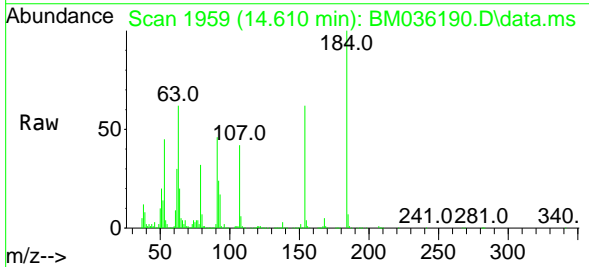
Manual Integrations

APPROVED

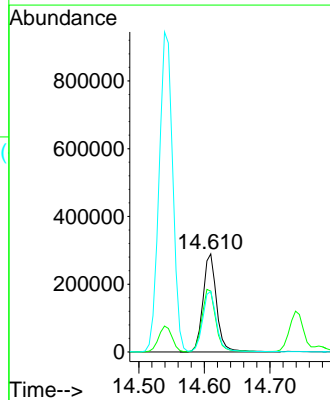
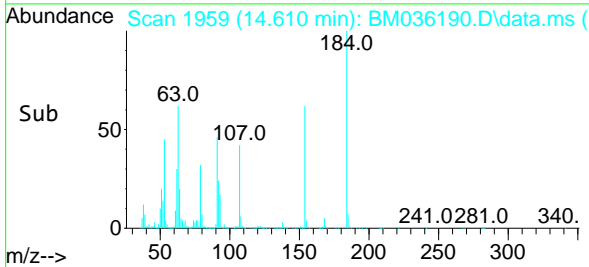
Reviewed By :Christian Giraldo 08/11/2022
 Supervised By :Jagrut Upadhyay 08/11/2022

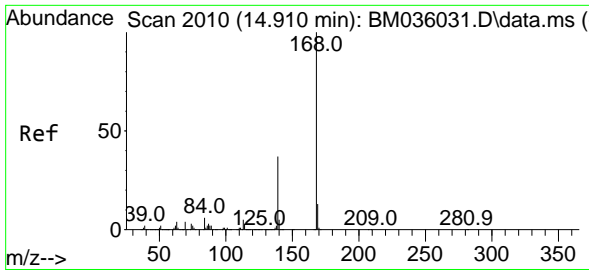


#54
 2,4-Dinitrophenol
 Concen: 96.538 ng
 RT: 14.610 min Scan# 1959
 Delta R.T. 0.006 min
 Lab File: BM036190.D
 Acq: 10 Aug 2022 13:45



Tgt Ion:184 Resp: 419866
 Ion Ratio Lower Upper
 184 100
 63 62.0 59.5 89.3
 154 61.9 55.6 83.4





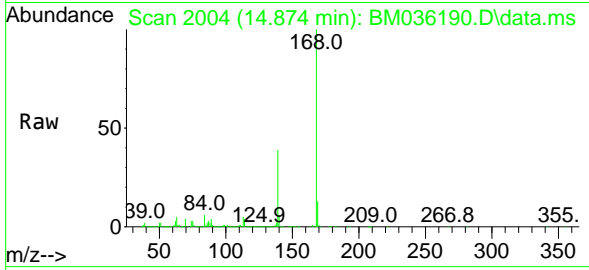
#55
 Dibenzofuran
 Concen: 41.720 ng
 RT: 14.874 min Scan# 2010
 Delta R.T. 0.000 min
 Lab File: BM036190.D
 Acq: 10 Aug 2022 13:45

Instrument :

BNA_M

Client SampleID :

PB146797BS

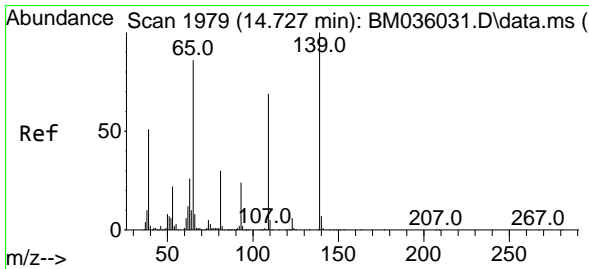
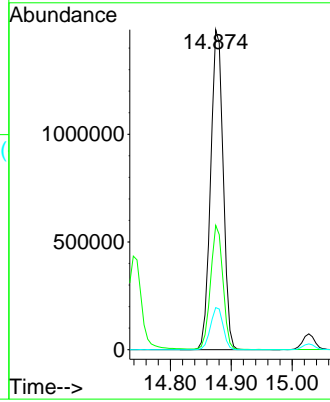
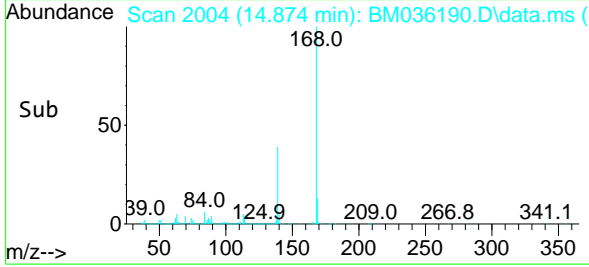


Tgt Ion:168 Resp: 212252
 Ion Ratio Lower Upper
 168 100
 139 38.9 32.2 48.2
 169 13.2 10.6 16.0

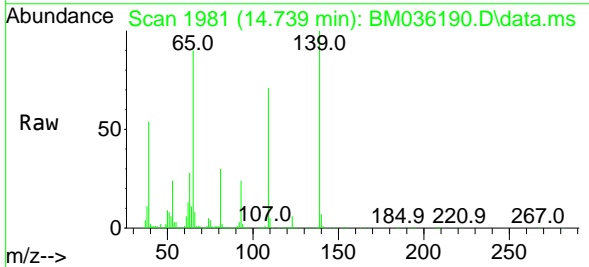
Manual Integrations

APPROVED

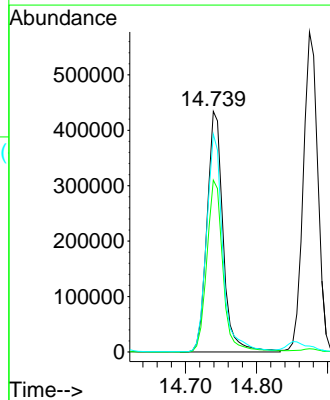
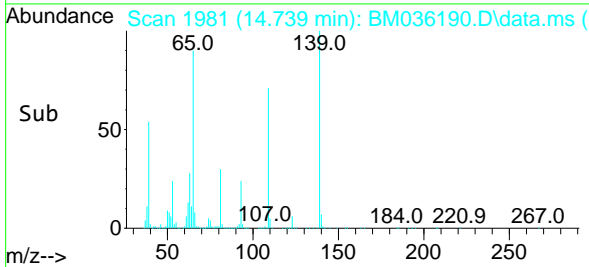
Reviewed By :Christian Giraldo 08/11/2022
 Supervised By :Jagrut Upadhyay 08/11/2022

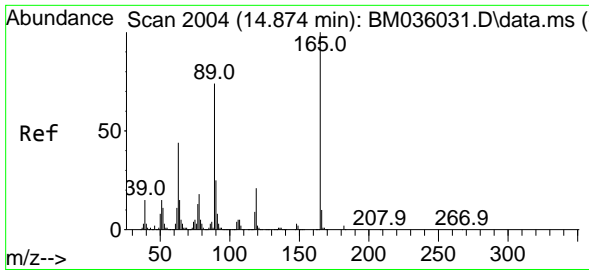


#56
 4-Nitrophenol
 Concen: 89.455 ng
 RT: 14.739 min Scan# 1981
 Delta R.T. 0.000 min
 Lab File: BM036190.D
 Acq: 10 Aug 2022 13:45



Tgt Ion:139 Resp: 686443
 Ion Ratio Lower Upper
 139 100
 109 71.4 62.5 102.5
 65 90.5 83.5 123.5





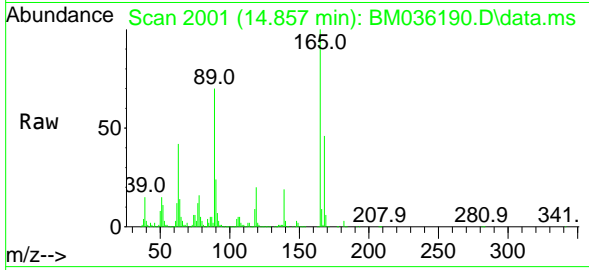
#57
 2,4-Dinitrotoluene
 Concen: 45.556 ng
 RT: 14.857 min Scan# 2001
 Delta R.T. 0.006 min
 Lab File: BM036190.D
 Acq: 10 Aug 2022 13:45

Instrument :

BNA_M

Client Sample Id :

PB146797BS

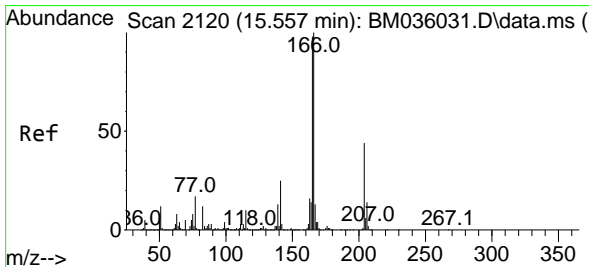
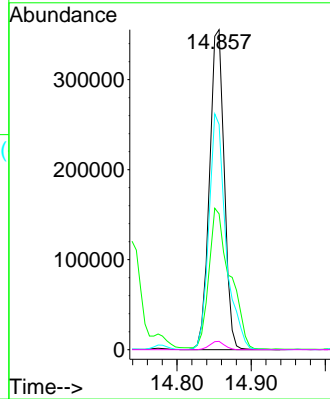
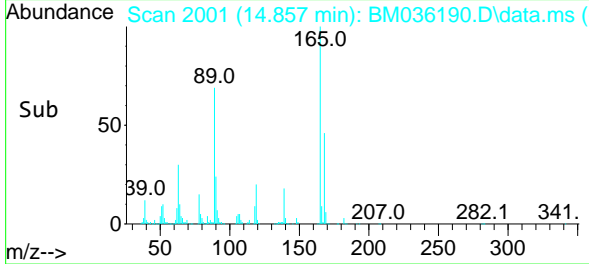


Tgt Ion:165 Resp: 490759
 Ion Ratio Lower Upper
 165 100
 63 42.4 35.6 53.4
 89 70.4 57.3 85.9
 182 2.6 2.1 3.1

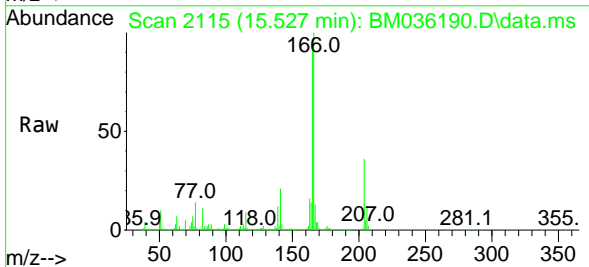
Manual Integrations

APPROVED

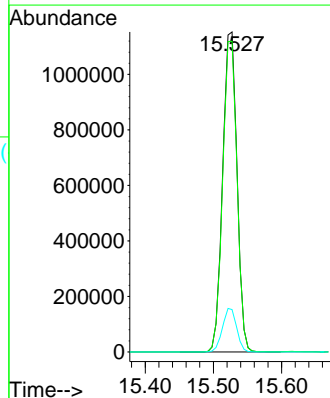
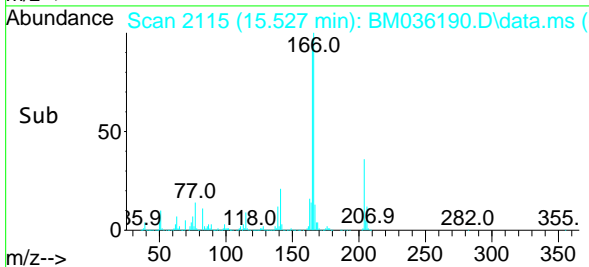
Reviewed By :Christian Giraldo 08/11/2022
 Supervised By :Jagrut Upadhyay 08/11/2022

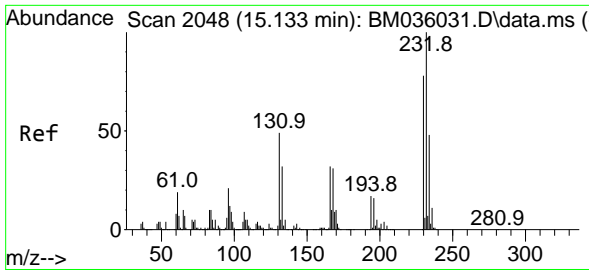


#58
 Fluorene
 Concen: 41.959 ng
 RT: 15.527 min Scan# 2115
 Delta R.T. 0.006 min
 Lab File: BM036190.D
 Acq: 10 Aug 2022 13:45



Tgt Ion:166 Resp: 1683874
 Ion Ratio Lower Upper
 166 100
 165 97.1 79.4 119.2
 167 13.3 10.6 16.0





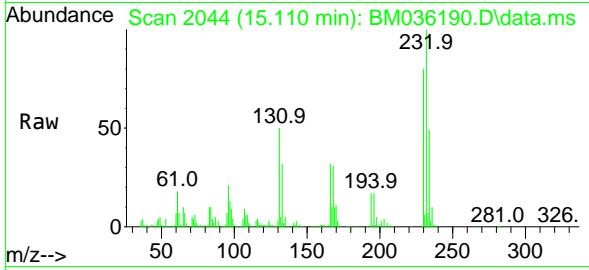
#59
 2,3,4,6-Tetrachlorophenol
 Concen: 40.823 ng
 RT: 15.110 min Scan# 2044
 Delta R.T. 0.000 min
 Lab File: BM036190.D
 Acq: 10 Aug 2022 13:45

Instrument :

BNA_M

Client Sample Id :

PB146797BS



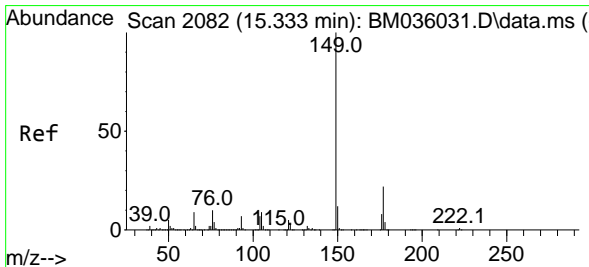
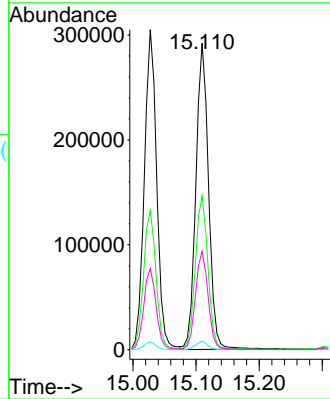
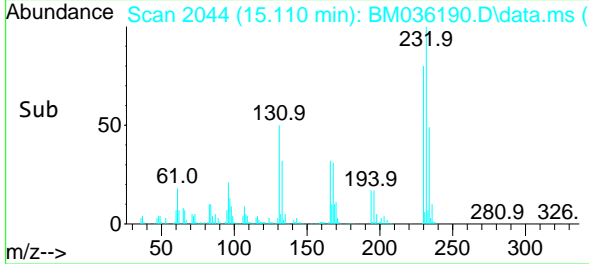
Tgt Ion: 232 Resp: 40564

Ion	Ratio	Lower	Upper
232	100		
131	49.4	41.0	61.6
130	2.7	2.3	3.5
166	31.9	27.7	41.5

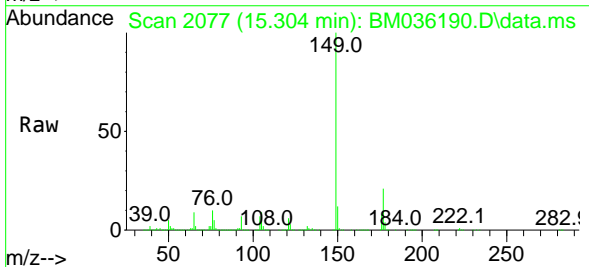
Manual Integrations

APPROVED

Reviewed By : Christian Giraldo 08/11/2022
 Supervised By : Jagrut Upadhyay 08/11/2022

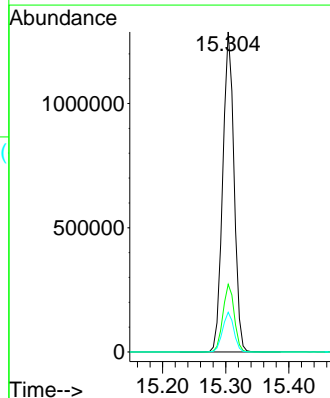
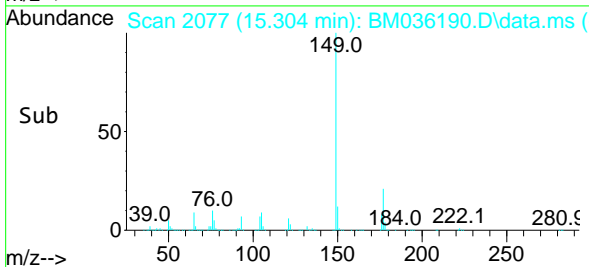


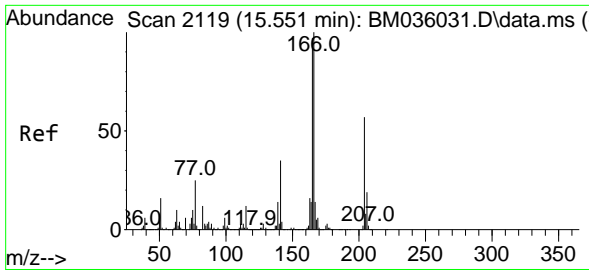
#60
 Diethylphthalate
 Concen: 38.014 ng
 RT: 15.304 min Scan# 2077
 Delta R.T. 0.000 min
 Lab File: BM036190.D
 Acq: 10 Aug 2022 13:45



Tgt Ion: 149 Resp: 1600226

Ion	Ratio	Lower	Upper
149	100		
177	21.2	16.9	25.3
150	12.4	10.1	15.1





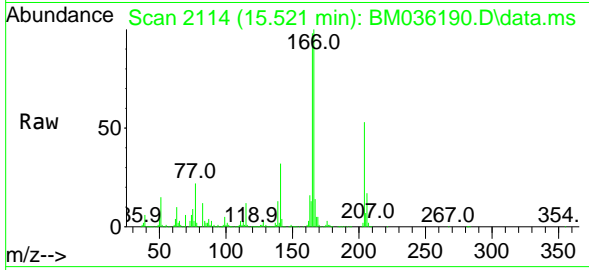
#61
 4-Chlorophenyl-phenylether
 Concen: 38.956 ng
 RT: 15.521 min Scan# 2114
 Delta R.T. 0.006 min
 Lab File: BM036190.D
 Acq: 10 Aug 2022 13:45

Instrument :

BNA_M

ClientSampleId :

PB146797BS

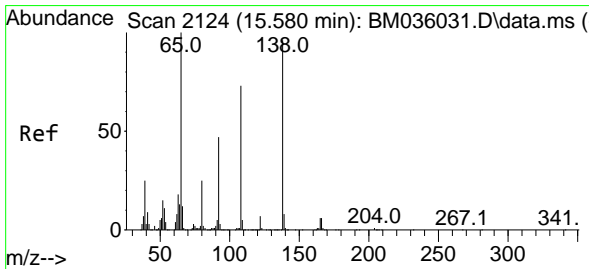
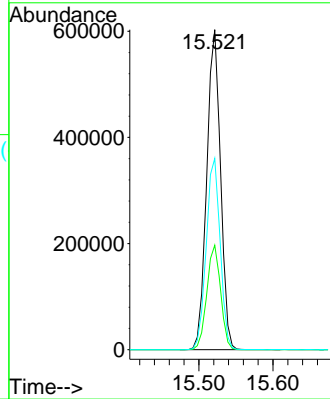
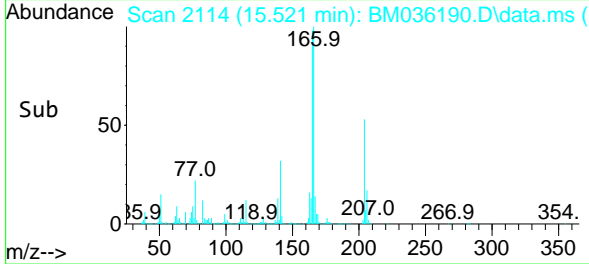


Tgt Ion:204 Resp: 77955
 Ion Ratio Lower Upper
 204 100
 206 32.7 26.3 39.5
 141 59.8 51.2 76.8

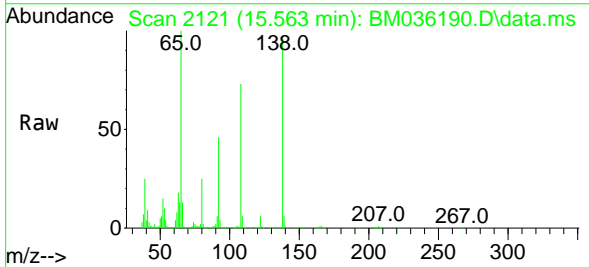
Manual Integrations

APPROVED

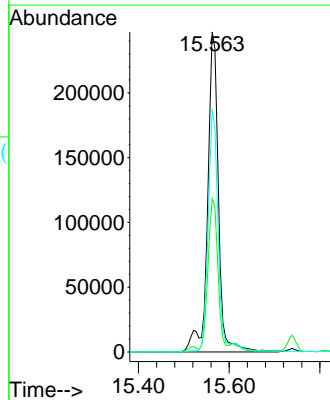
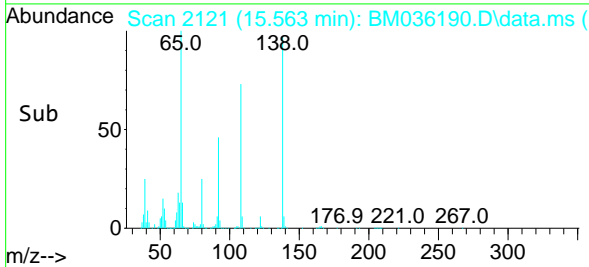
Reviewed By :Christian Giraldo 08/11/2022
 Supervised By :Jagrut Upadhyay 08/11/2022

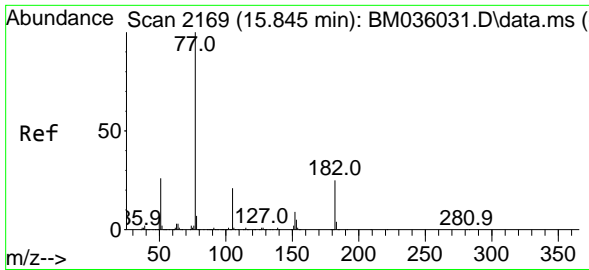


#62
 4-Nitroaniline
 Concen: 41.551 ng m
 RT: 15.563 min Scan# 2121
 Delta R.T. 0.000 min
 Lab File: BM036190.D
 Acq: 10 Aug 2022 13:45



Tgt Ion:138 Resp: 409891
 Ion Ratio Lower Upper
 138 100
 92 47.9 30.8 70.8
 108 75.3 65.7 105.7





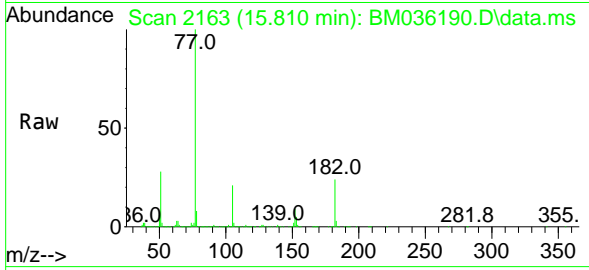
#63
 Azobenzene
 Concen: 39.793 ng
 RT: 15.810 min Scan# 2163
 Delta R.T. 0.000 min
 Lab File: BM036190.D
 Acq: 10 Aug 2022 13:45

Instrument :

BNA_M

ClientSampleId :

PB146797BS

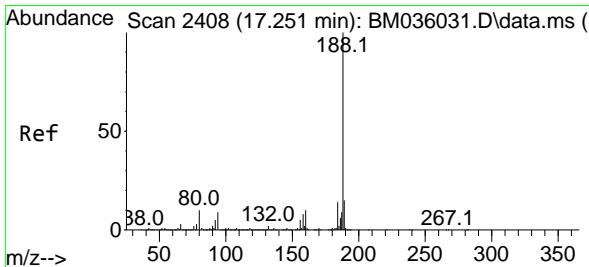
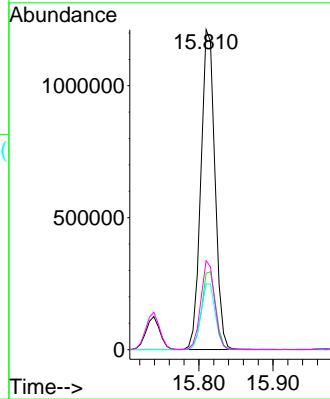
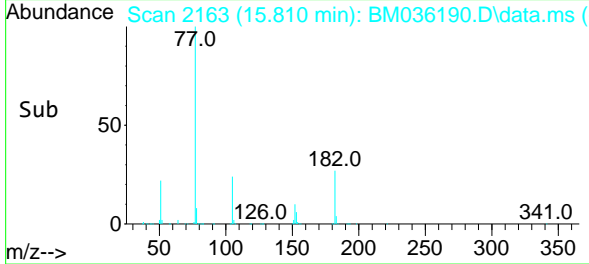


Tgt Ion: 77 Resp: 159246
 Ion Ratio Lower Upper
 77 100
 182 23.9 4.9 44.9
 105 20.6 0.0 39.6
 51 27.8 14.3 54.3

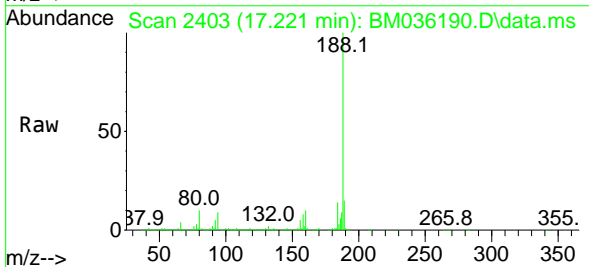
Manual Integrations

APPROVED

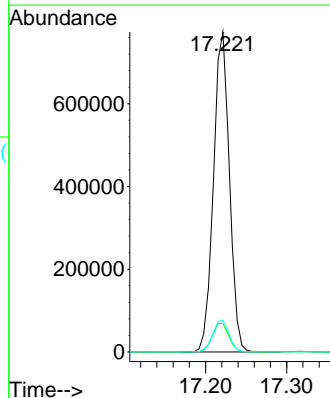
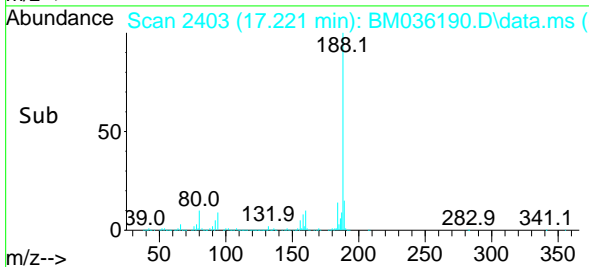
Reviewed By :Christian Giraldo 08/11/2022
 Supervised By :Jagrut Upadhyay 08/11/2022

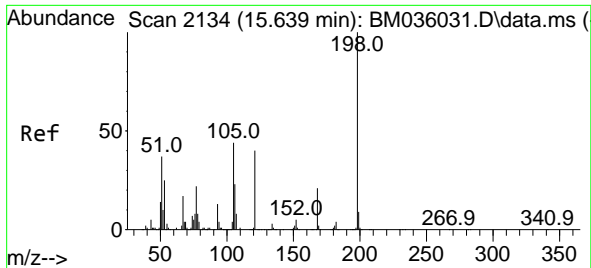


#64
 Phenanthrene-d10
 Concen: 20.000 ng
 RT: 17.221 min Scan# 2403
 Delta R.T. 0.006 min
 Lab File: BM036190.D
 Acq: 10 Aug 2022 13:45



Tgt Ion:188 Resp: 1055230
 Ion Ratio Lower Upper
 188 100
 94 8.9 7.0 10.4
 80 10.0 7.6 11.4





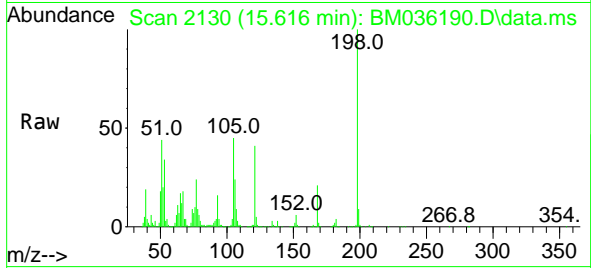
#65
 4,6-Dinitro-2-methylphenol
 Concen: 45.005 ng
 RT: 15.616 min Scan# 2110
 Delta R.T. 0.006 min
 Lab File: BM036190.D
 Acq: 10 Aug 2022 13:45

Instrument :

BNA_M

ClientSampleId :

PB146797BS

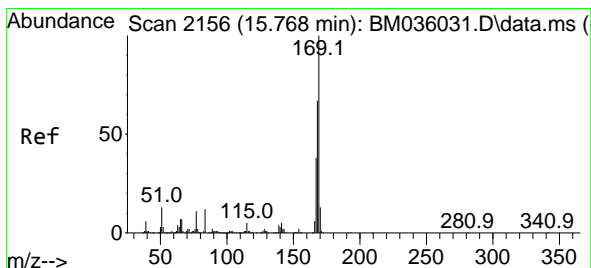
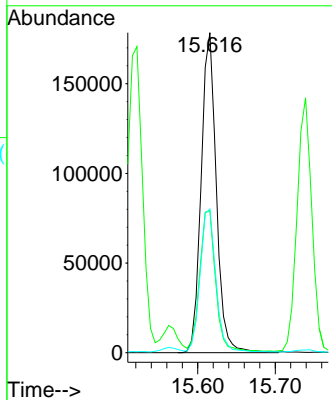
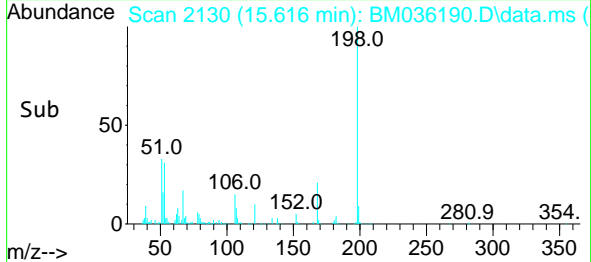


Tgt Ion:198 Resp: 242824
 Ion Ratio Lower Upper
 198 100
 51 44.4 29.0 69.0
 105 44.9 22.1 62.1

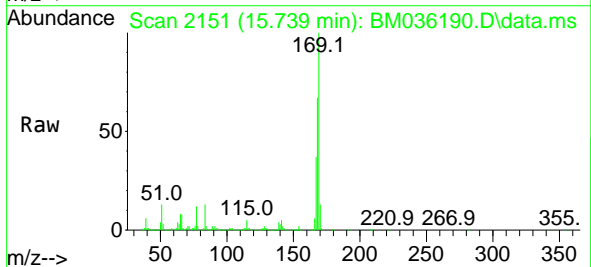
Manual Integrations

APPROVED

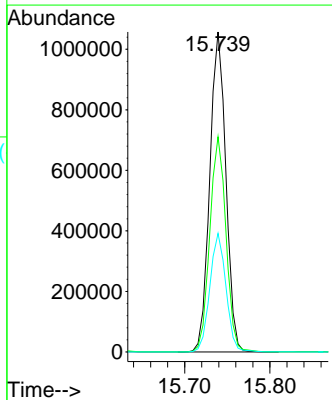
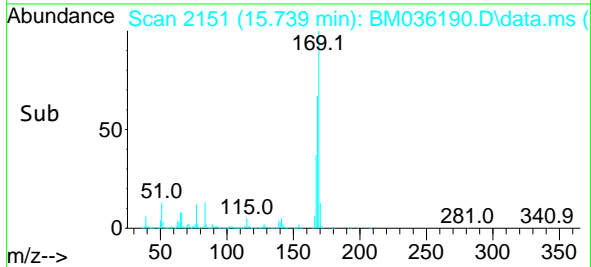
Reviewed By :Christian Giraldo 08/11/2022
 Supervised By :Jagrut Upadhyay 08/11/2022

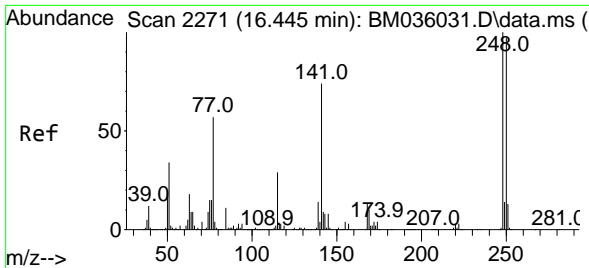


#66
 n-Nitrosodiphenylamine
 Concen: 46.541 ng
 RT: 15.739 min Scan# 2151
 Delta R.T. 0.000 min
 Lab File: BM036190.D
 Acq: 10 Aug 2022 13:45



Tgt Ion:169 Resp: 1386418
 Ion Ratio Lower Upper
 169 100
 168 67.2 54.3 81.5
 167 37.1 29.4 44.0





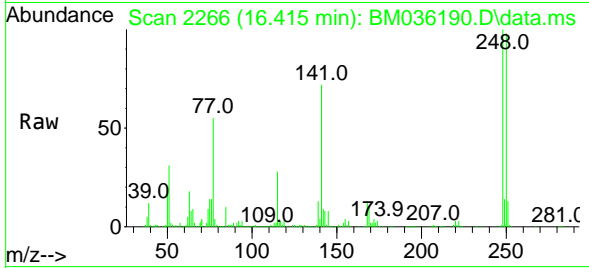
#67
 4-Bromophenyl-phenylether
 Concen: 42.978 ng
 RT: 16.415 min Scan# 21
 Delta R.T. 0.006 min
 Lab File: BM036190.D
 Acq: 10 Aug 2022 13:45

Instrument :

BNA_M

ClientSampleId :

PB146797BS

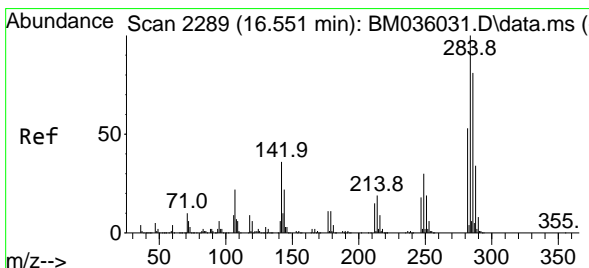
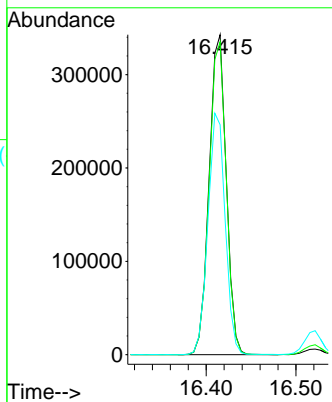
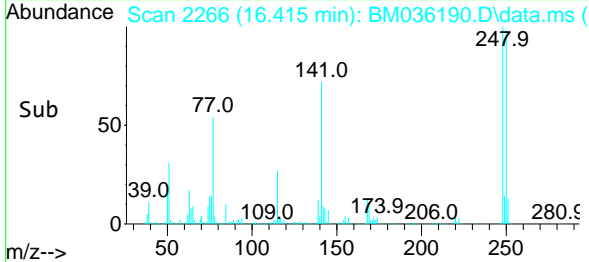


Tgt Ion:248 Resp: 45363
 Ion Ratio Lower Upper
 248 100
 250 97.8 78.0 117.0
 141 71.8 66.0 99.0

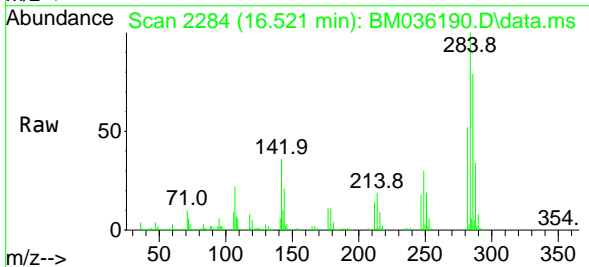
Manual Integrations

APPROVED

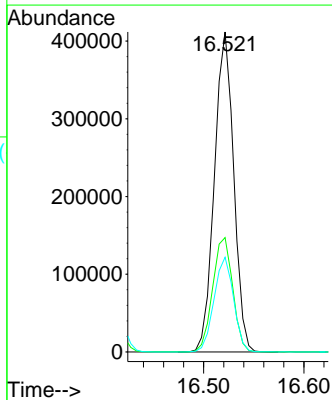
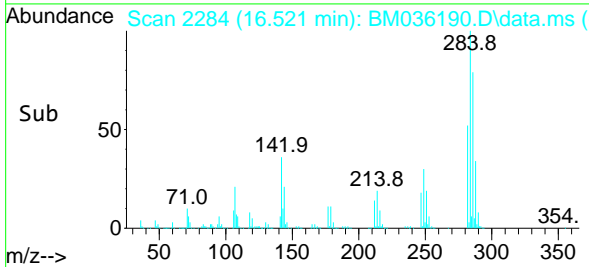
Reviewed By :Christian Giraldo 08/11/2022
 Supervised By :Jagrut Upadhyay 08/11/2022

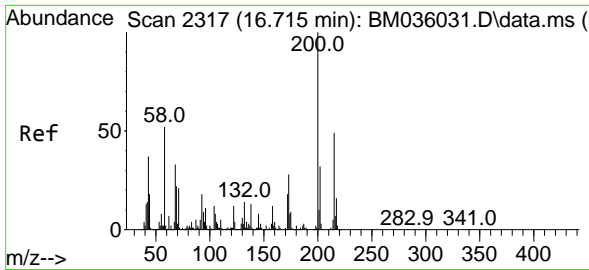


#68
 Hexachlorobenzene
 Concen: 45.344 ng
 RT: 16.521 min Scan# 2284
 Delta R.T. 0.000 min
 Lab File: BM036190.D
 Acq: 10 Aug 2022 13:45



Tgt Ion:284 Resp: 549146
 Ion Ratio Lower Upper
 284 100
 142 35.8 33.6 50.4
 249 29.6 26.2 39.2





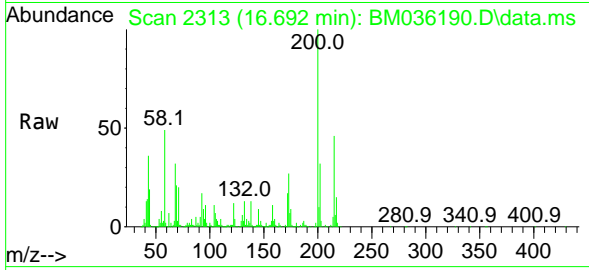
#69
 Atrazine
 Concen: 53.494 ng
 RT: 16.692 min Scan# 21
 Delta R.T. 0.000 min
 Lab File: BM036190.D
 Acq: 10 Aug 2022 13:45

Instrument :

BNA_M

ClientSampleId :

PB146797BS

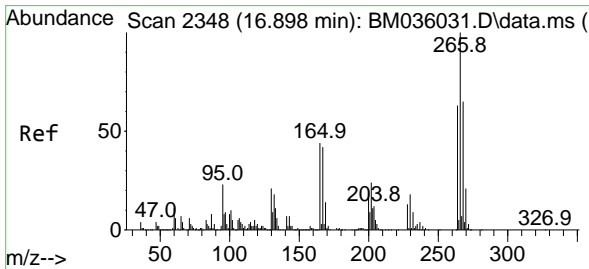
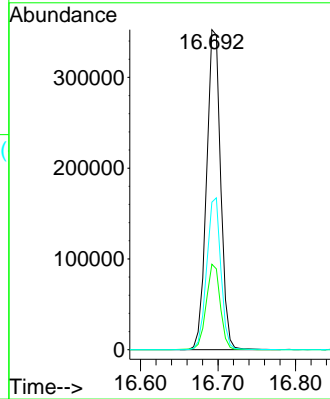
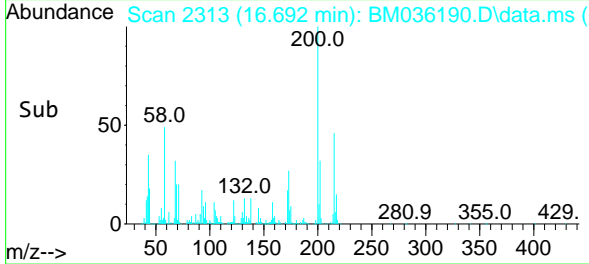


Tgt Ion:200 Resp: 44588
 Ion Ratio Lower Upper
 200 100
 173 26.7 6.6 46.6
 215 46.1 26.2 66.2

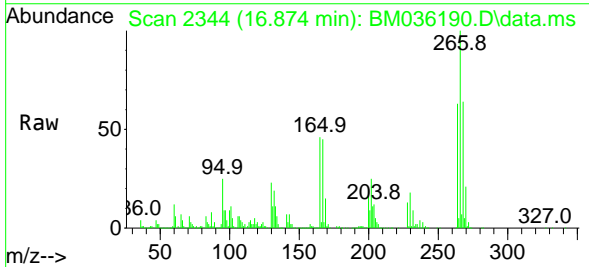
Manual Integrations

APPROVED

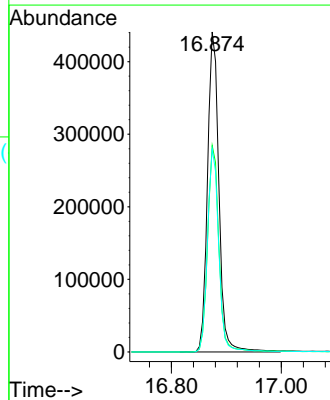
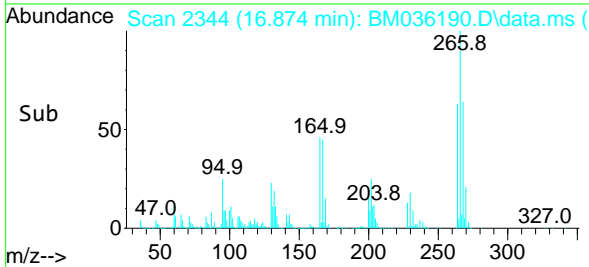
Reviewed By :Christian Giraldo 08/11/2022
 Supervised By :Jagrut Upadhyay 08/11/2022

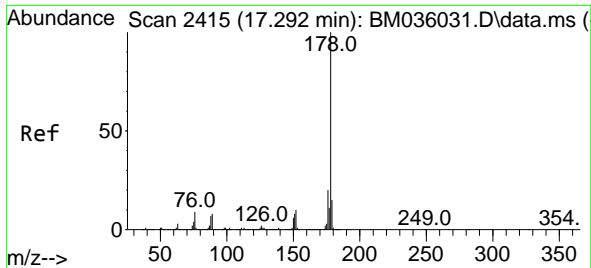


#70
 Pentachlorophenol
 Concen: 89.290 ng
 RT: 16.874 min Scan# 2344
 Delta R.T. 0.000 min
 Lab File: BM036190.D
 Acq: 10 Aug 2022 13:45



Tgt Ion:266 Resp: 633318
 Ion Ratio Lower Upper
 266 100
 268 64.5 51.9 77.9
 264 63.5 50.6 76.0





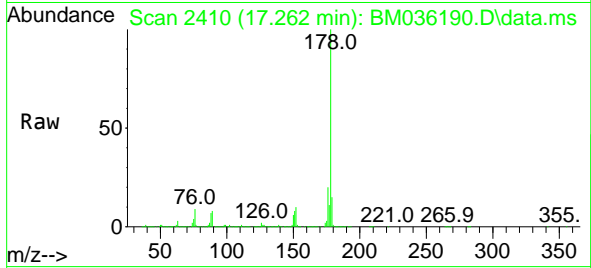
#71
 Phenanthrene
 Concen: 45.223 ng
 RT: 17.262 min Scan# 2410
 Delta R.T. 0.000 min
 Lab File: BM036190.D
 Acq: 10 Aug 2022 13:45

Instrument :

BNA_M

Client Sample Id :

PB146797BS

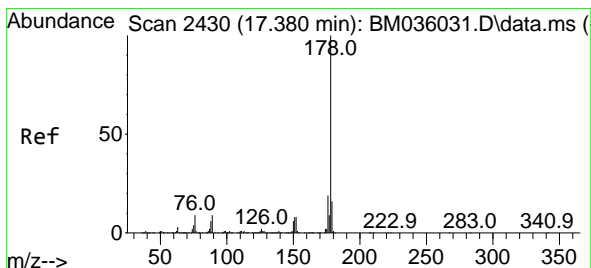
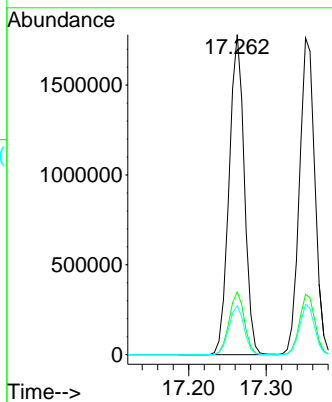
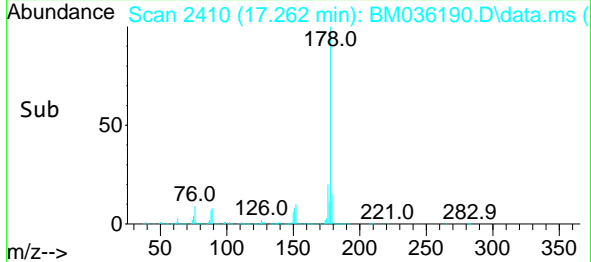


Tgt Ion:178 Resp: 2431192
 Ion Ratio Lower Upper
 178 100
 176 19.6 15.4 23.0
 179 15.3 12.4 18.6

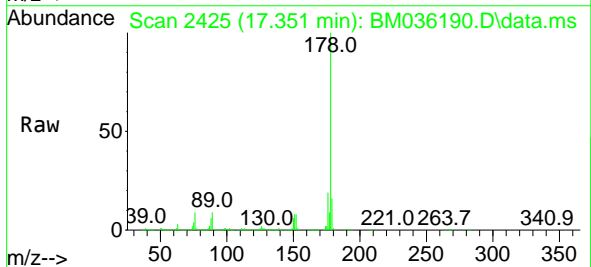
Manual Integrations

APPROVED

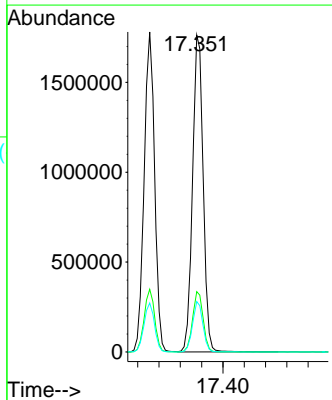
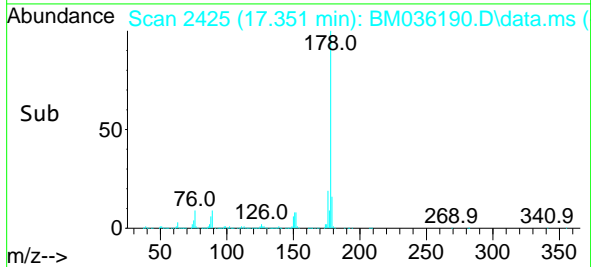
Reviewed By :Christian Giraldo 08/11/2022
 Supervised By :Jagrut Upadhyay 08/11/2022

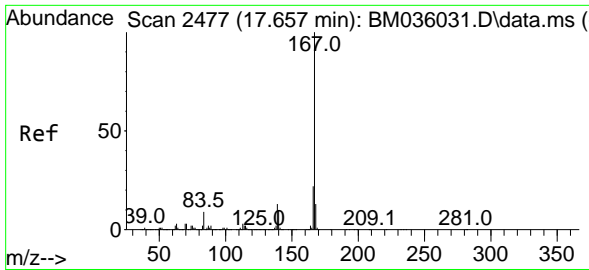


#72
 Anthracene
 Concen: 46.917 ng
 RT: 17.351 min Scan# 2425
 Delta R.T. 0.000 min
 Lab File: BM036190.D
 Acq: 10 Aug 2022 13:45



Tgt Ion:178 Resp: 2441904
 Ion Ratio Lower Upper
 178 100
 176 19.1 15.0 22.4
 179 15.9 12.2 18.2





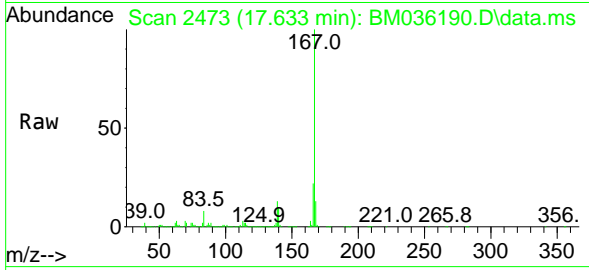
#73
 Carbazole
 Concen: 43.305 ng
 RT: 17.633 min Scan# 2473
 Delta R.T. 0.000 min
 Lab File: BM036190.D
 Acq: 10 Aug 2022 13:45

Instrument :

BNA_M

Client Sample Id :

PB146797BS

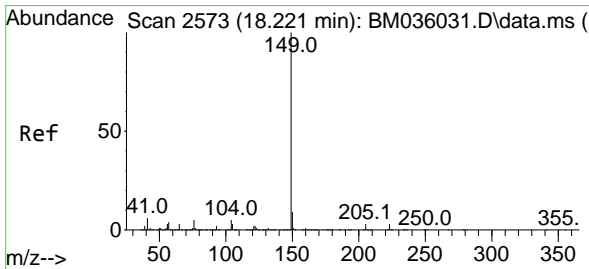
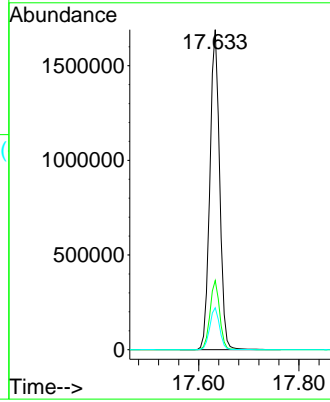
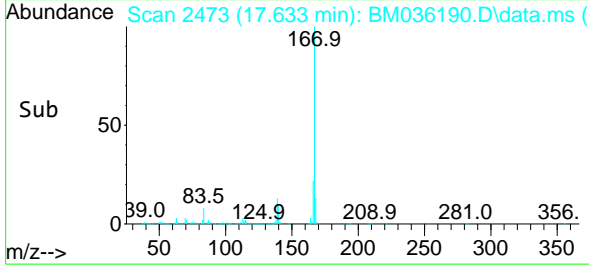


Tgt Ion:167 Resp: 228370
 Ion Ratio Lower Upper
 167 100
 166 21.6 17.8 26.8
 139 13.1 10.9 16.3

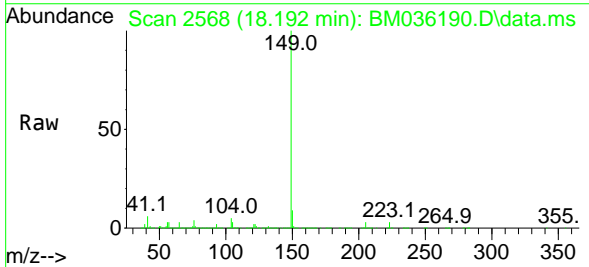
Manual Integrations

APPROVED

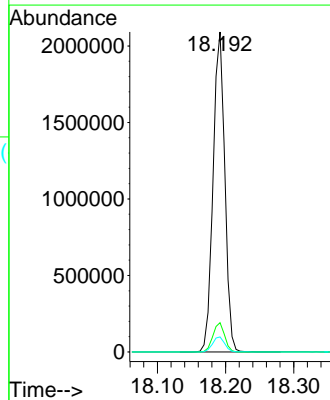
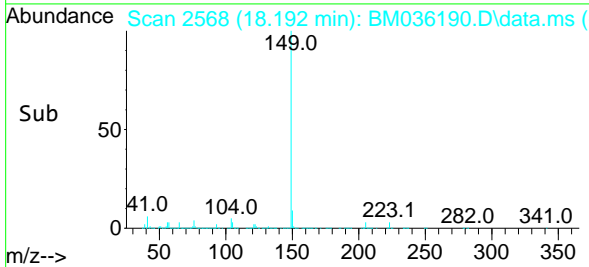
Reviewed By :Christian Giraldo 08/11/2022
 Supervised By :Jagrut Upadhyay 08/11/2022

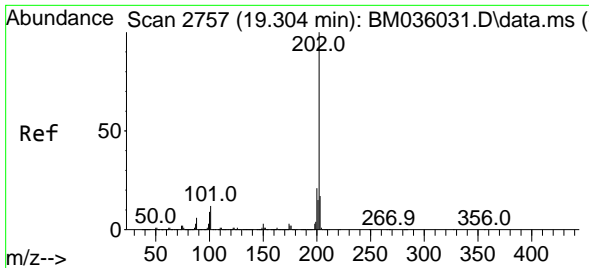


#74
 Di-n-butylphthalate
 Concen: 39.762 ng
 RT: 18.192 min Scan# 2568
 Delta R.T. 0.006 min
 Lab File: BM036190.D
 Acq: 10 Aug 2022 13:45



Tgt Ion:149 Resp: 2503097
 Ion Ratio Lower Upper
 149 100
 150 9.1 7.3 10.9
 104 4.7 4.3 6.5





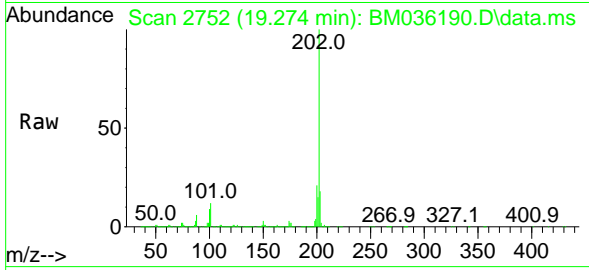
#75
 Fluoranthene
 Concen: 42.512 ng
 RT: 19.274 min Scan# 2113
 Delta R.T. 0.000 min
 Lab File: BM036190.D
 Acq: 10 Aug 2022 13:45

Instrument :

BNA_M

Client Sample Id :

PB146797BS

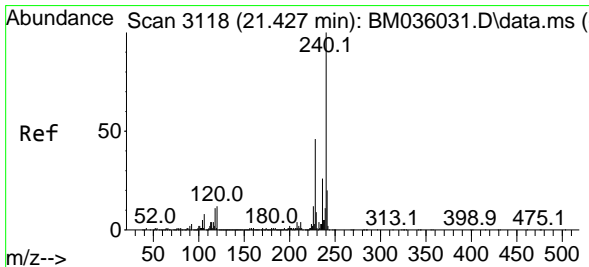
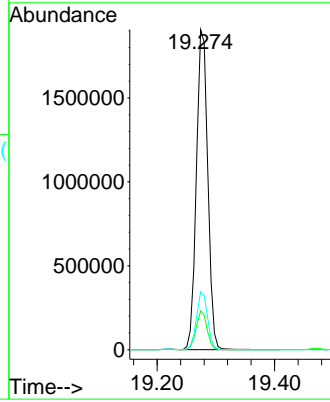
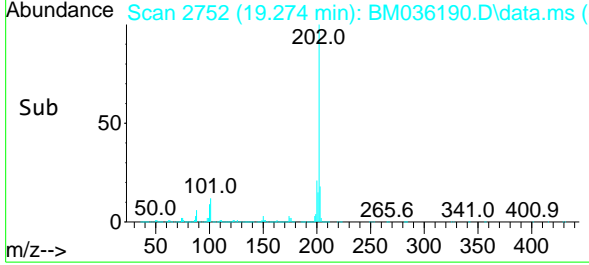


Tgt Ion: 202 Resp: 2558300
 Ion Ratio Lower Upper
 202 100
 101 12.1 0.0 30.6
 203 18.1 0.0 37.4

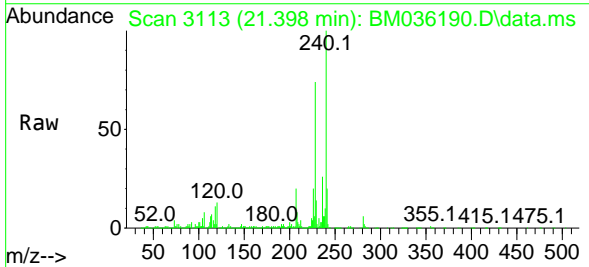
Manual Integrations

APPROVED

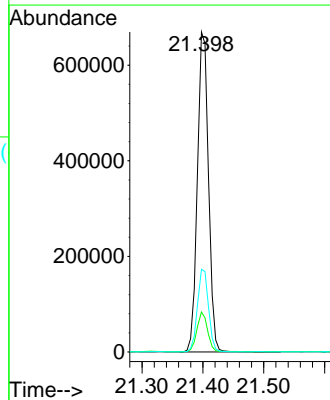
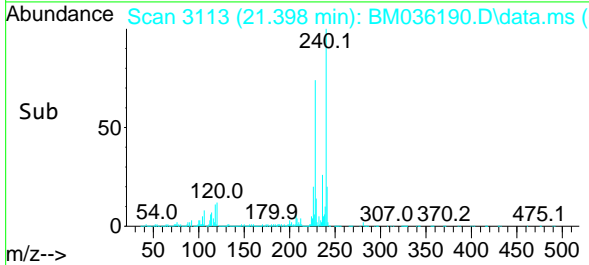
Reviewed By : Christian Giraldo 08/11/2022
 Supervised By : Jagrut Upadhyay 08/11/2022

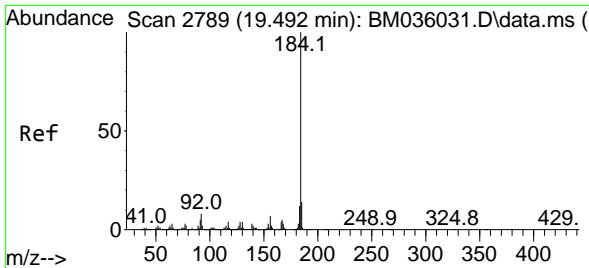


#76
 Chrysene-d12
 Concen: 20.000 ng
 RT: 21.398 min Scan# 3113
 Delta R.T. 0.000 min
 Lab File: BM036190.D
 Acq: 10 Aug 2022 13:45



Tgt Ion: 240 Resp: 848522
 Ion Ratio Lower Upper
 240 100
 120 12.5 9.4 14.0
 236 25.8 20.6 30.8





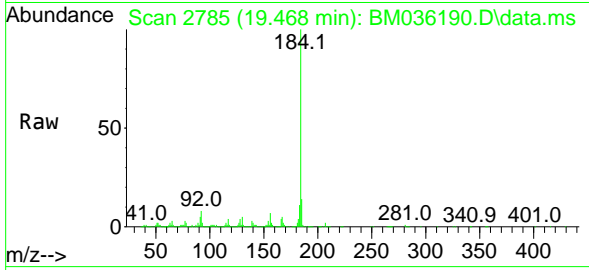
#77
 Benzidine
 Concen: 121.885 ng
 RT: 19.468 min Scan# 21
 Delta R.T. -0.006 min
 Lab File: BM036190.D
 Acq: 10 Aug 2022 13:45

Instrument :

BNA_M

Client Sample Id :

PB146797BS

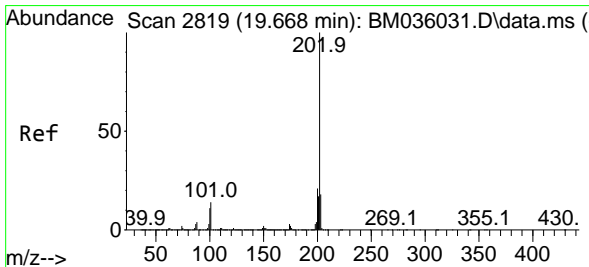
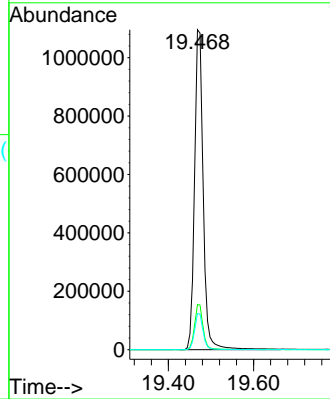
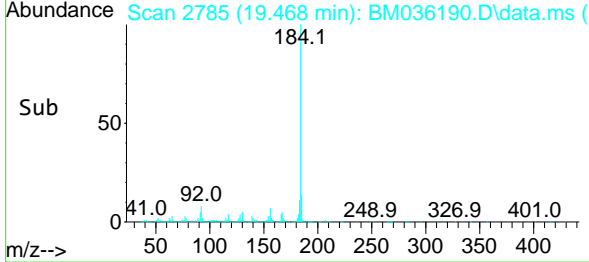


Tgt Ion:184 Resp: 1551028
 Ion Ratio Lower Upper
 184 100
 185 14.1 11.3 16.9
 183 11.3 9.5 14.3

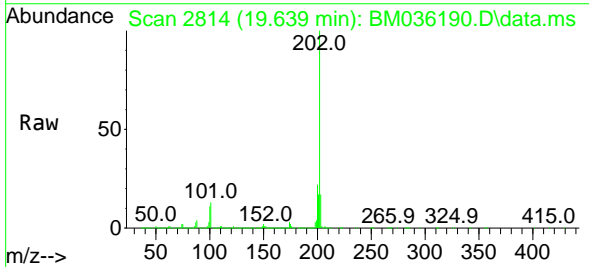
Manual Integrations

APPROVED

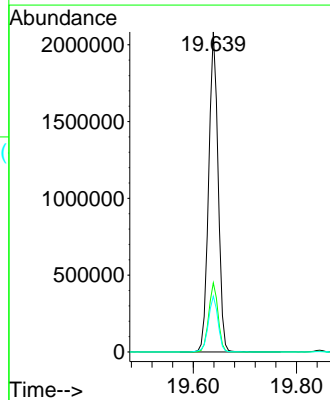
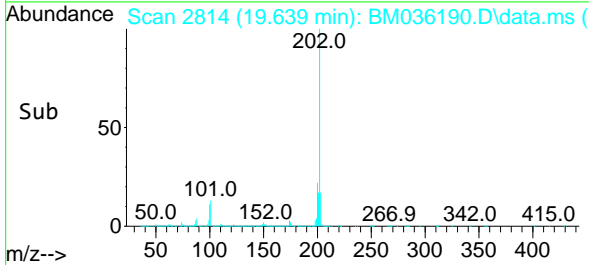
Reviewed By :Christian Giraldo 08/11/2022
 Supervised By :Jagrut Upadhyay 08/11/2022

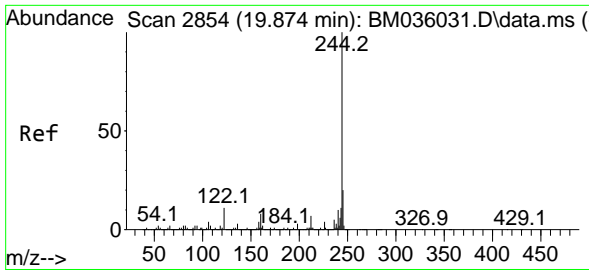


#78
 Pyrene
 Concen: 50.119 ng
 RT: 19.639 min Scan# 2814
 Delta R.T. 0.000 min
 Lab File: BM036190.D
 Acq: 10 Aug 2022 13:45



Tgt Ion:202 Resp: 2637072
 Ion Ratio Lower Upper
 202 100
 200 21.6 16.7 25.1
 203 17.4 13.9 20.9





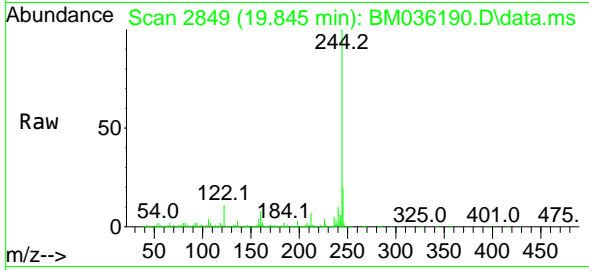
#79
 Terphenyl-d14
 Concen: 95.651 ng
 RT: 19.845 min Scan# 21
 Delta R.T. 0.000 min
 Lab File: BM036190.D
 Acq: 10 Aug 2022 13:45

Instrument :

BNA_M

ClientSampleId :

PB146797BS

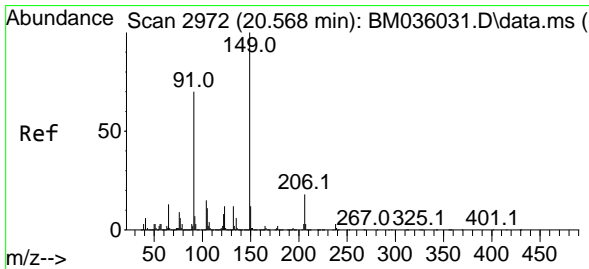
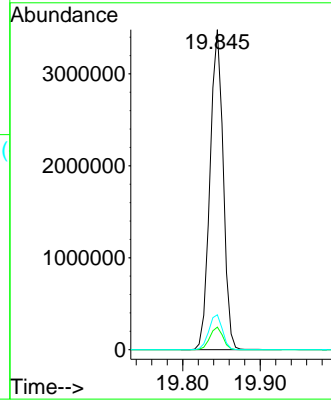
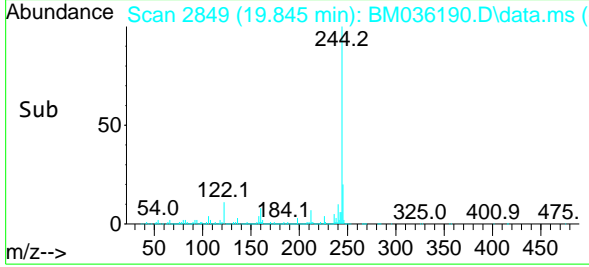


Tgt Ion:244 Resp: 4114799
 Ion Ratio Lower Upper
 244 100
 212 7.1 6.2 9.4
 122 10.9 8.3 12.5

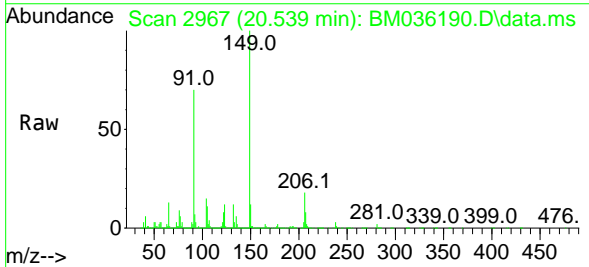
Manual Integrations

APPROVED

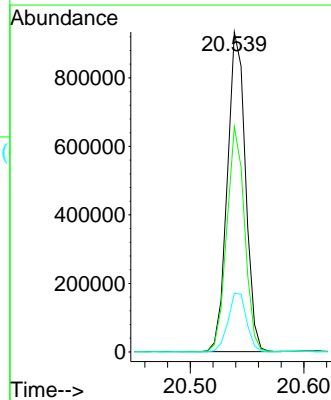
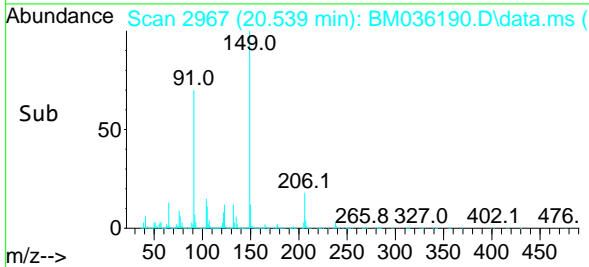
Reviewed By :Christian Giraldo 08/11/2022
 Supervised By :Jagrut Upadhyay 08/11/2022

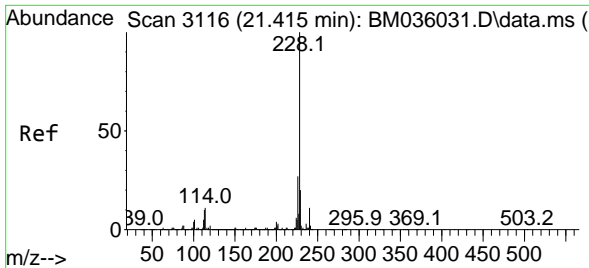


#80
 Butylbenzylphthalate
 Concen: 45.543 ng
 RT: 20.539 min Scan# 2967
 Delta R.T. 0.000 min
 Lab File: BM036190.D
 Acq: 10 Aug 2022 13:45



Tgt Ion:149 Resp: 1034267
 Ion Ratio Lower Upper
 149 100
 91 70.4 56.6 85.0
 206 18.4 15.4 23.0





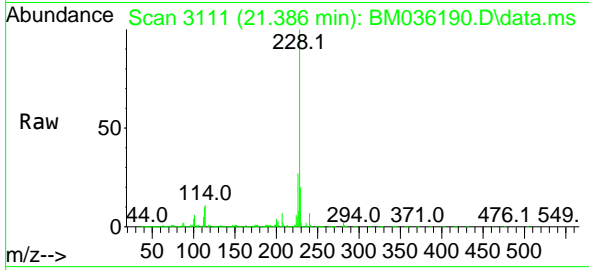
#81
 Benzo(a)anthracene
 Concen: 45.346 ng
 RT: 21.386 min Scan# 3111
 Delta R.T. 0.000 min
 Lab File: BM036190.D
 Acq: 10 Aug 2022 13:45

Instrument :

BNA_M

Client Sample Id :

PB146797BS

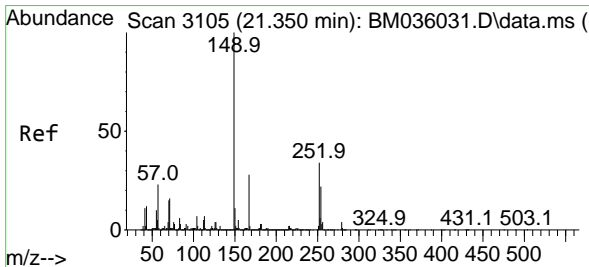
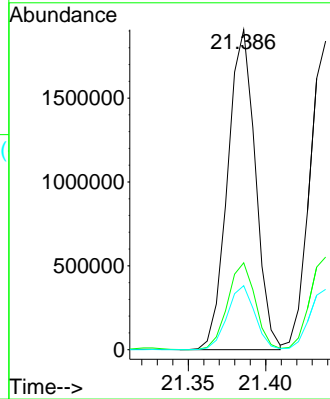
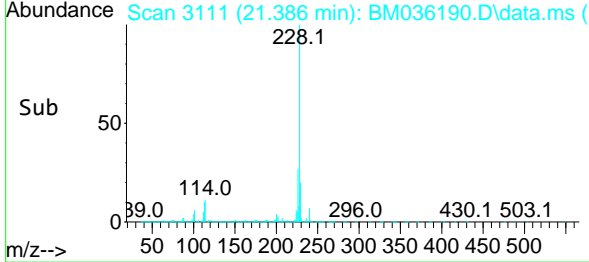


Tgt Ion:228 Resp: 236994
 Ion Ratio Lower Upper
 228 100
 226 27.2 22.3 33.5
 229 20.0 15.8 23.6

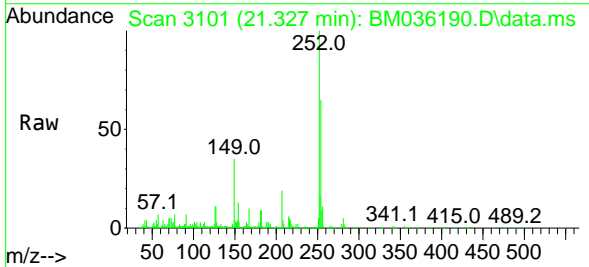
Manual Integrations

APPROVED

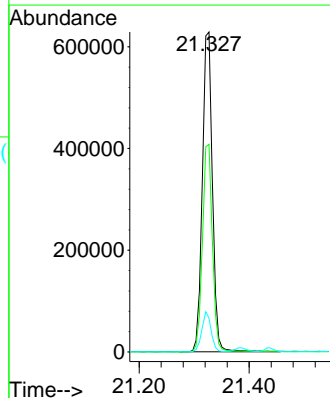
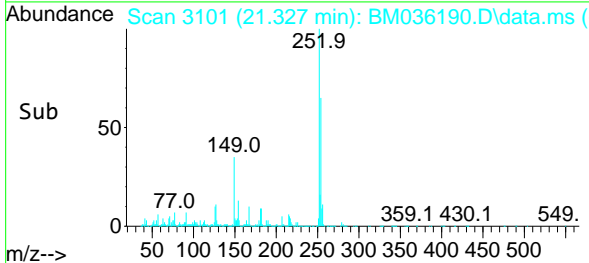
Reviewed By :Christian Giraldo 08/11/2022
 Supervised By :Jagrut Upadhyay 08/11/2022

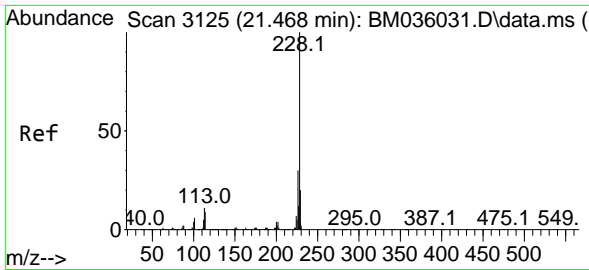


#82
 3,3'-Dichlorobenzidine
 Concen: 63.347 ng
 RT: 21.327 min Scan# 3101
 Delta R.T. 0.006 min
 Lab File: BM036190.D
 Acq: 10 Aug 2022 13:45



Tgt Ion:252 Resp: 803914
 Ion Ratio Lower Upper
 252 100
 254 64.9 51.7 77.5
 126 10.5 9.4 14.0





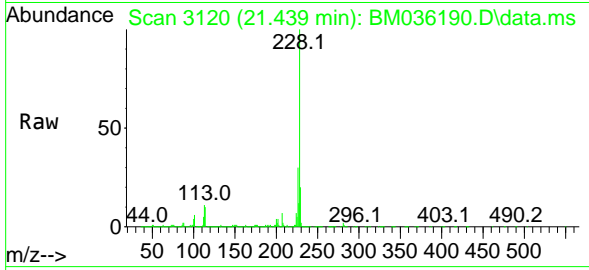
#83
 Chrysene
 Concen: 44.725 ng
 RT: 21.439 min Scan# 3125
 Delta R.T. 0.000 min
 Lab File: BM036190.D
 Acq: 10 Aug 2022 13:45

Instrument :

BNA_M

ClientSampleId :

PB146797BS

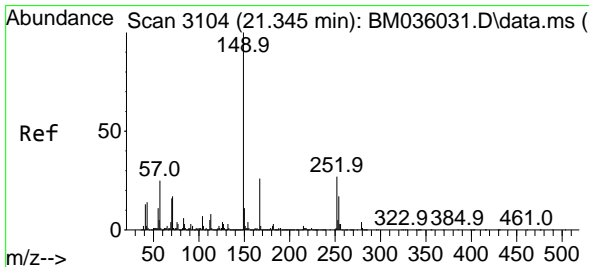
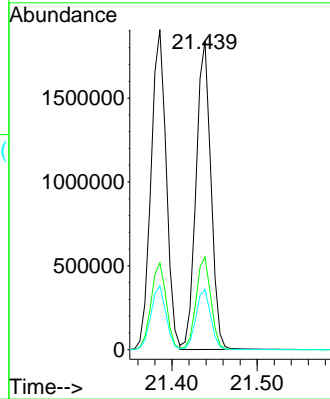
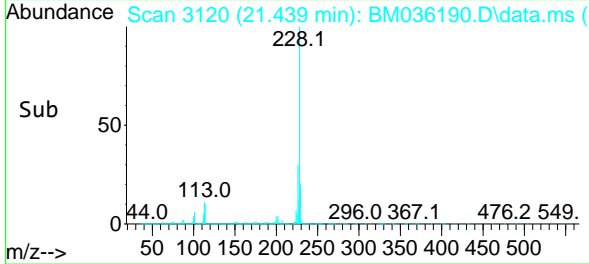


Tgt Ion:228 Resp: 222199
 Ion Ratio Lower Upper
 228 100
 226 30.0 24.4 36.6
 229 19.6 15.8 23.8

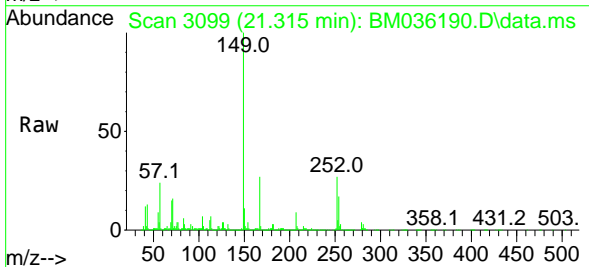
Manual Integrations

APPROVED

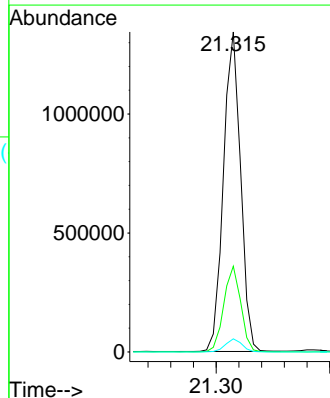
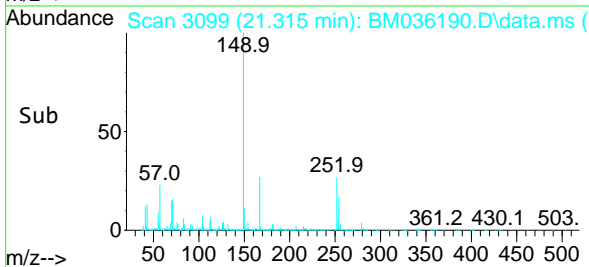
Reviewed By :Christian Giraldo 08/11/2022
 Supervised By :Jagrut Upadhyay 08/11/2022

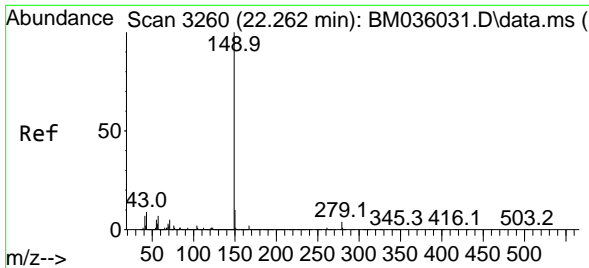


#84
 Bis(2-ethylhexyl)phthalate
 Concen: 41.140 ng
 RT: 21.315 min Scan# 3099
 Delta R.T. 0.000 min
 Lab File: BM036190.D
 Acq: 10 Aug 2022 13:45



Tgt Ion:149 Resp: 1409485
 Ion Ratio Lower Upper
 149 100
 167 26.8 21.1 31.7
 279 4.1 2.8 4.2





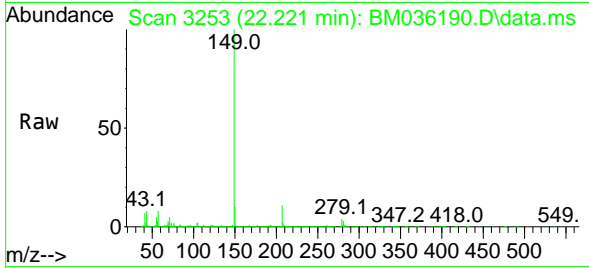
#85
 Di-n-octyl phthalate
 Concen: 40.727 ng
 RT: 22.221 min Scan# 31
 Delta R.T. 0.000 min
 Lab File: BM036190.D
 Acq: 10 Aug 2022 13:45

Instrument :

BNA_M

ClientSampleId :

PB146797BS

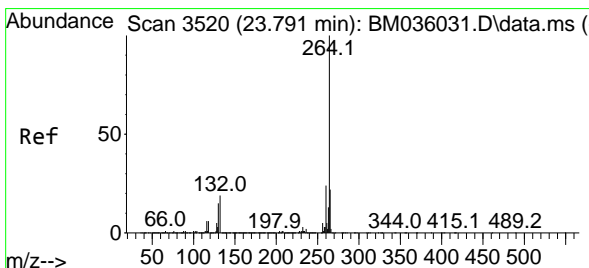
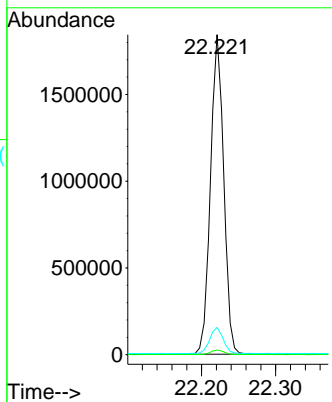
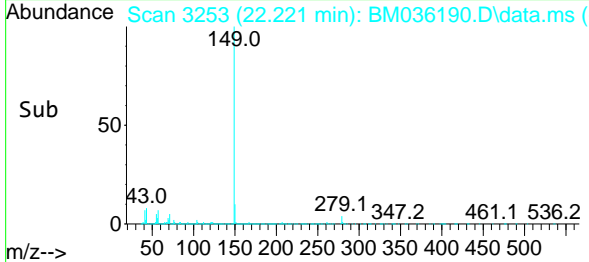


Tgt Ion:149 Resp: 2277200
 Ion Ratio Lower Upper
 149 100
 167 1.4 1.3 1.9
 43 8.4 8.6 12.8

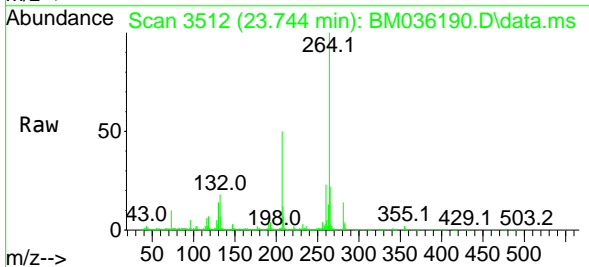
Manual Integrations

APPROVED

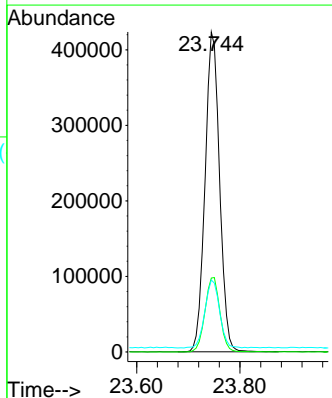
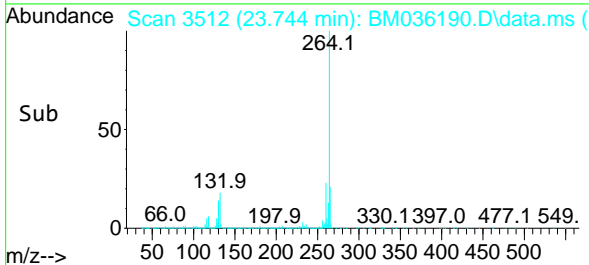
Reviewed By :Christian Giraldo 08/11/2022
 Supervised By :Jagrut Upadhyay 08/11/2022

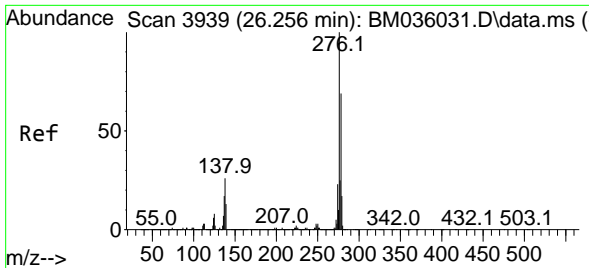


#86
 Perylene-d12
 Concen: 20.000 ng
 RT: 23.744 min Scan# 3512
 Delta R.T. 0.000 min
 Lab File: BM036190.D
 Acq: 10 Aug 2022 13:45



Tgt Ion:264 Resp: 825350
 Ion Ratio Lower Upper
 264 100
 260 23.1 18.9 28.3
 265 22.5 17.5 26.3





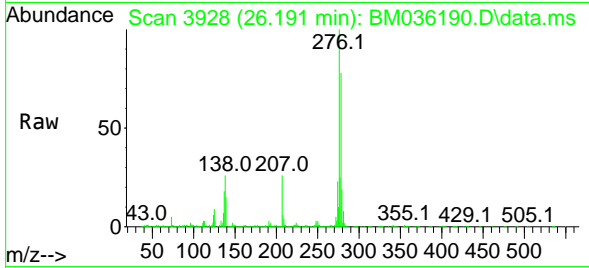
#87
 Indeno(1,2,3-cd)pyrene
 Concen: 46.905 ng
 RT: 26.191 min Scan# 3391
 Delta R.T. 0.000 min
 Lab File: BM036190.D
 Acq: 10 Aug 2022 13:45

Instrument :

BNA_M

Client Sample Id :

PB146797BS

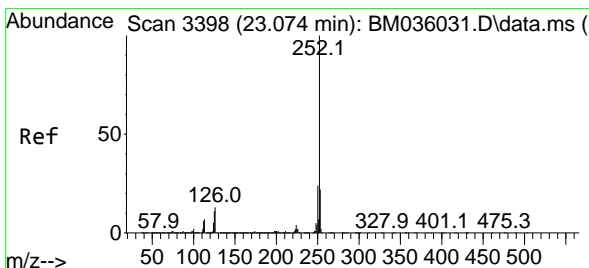
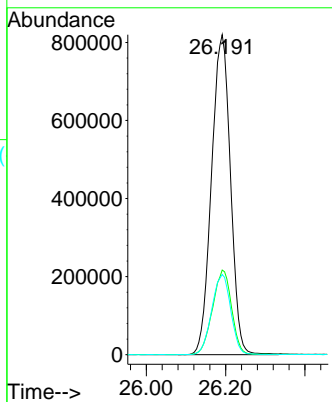
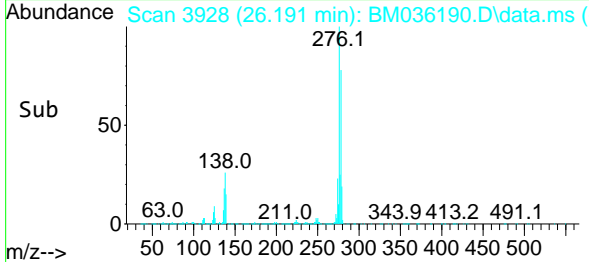


Tgt Ion: 276 Resp: 272053
 Ion Ratio Lower Upper
 276 100
 138 26.5 20.2 30.4
 277 25.1 20.2 30.2

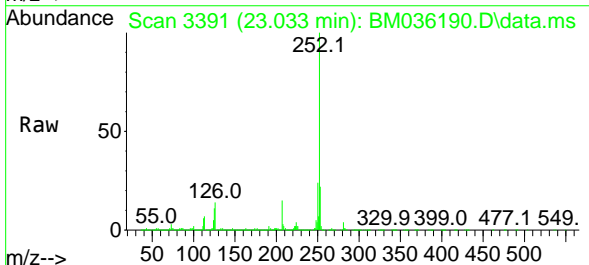
Manual Integrations

APPROVED

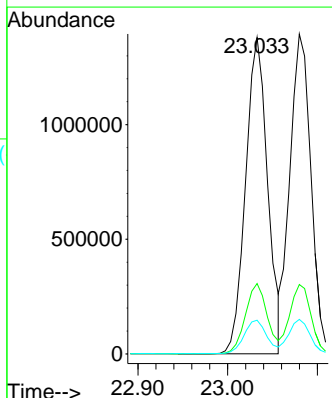
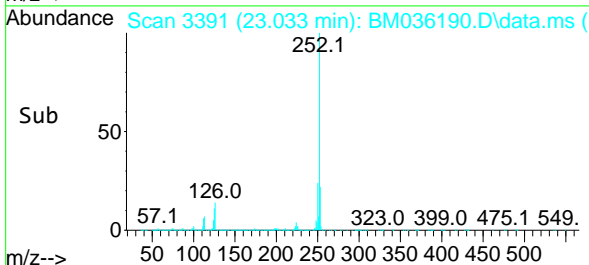
Reviewed By : Christian Giraldo 08/11/2022
 Supervised By : Jagrut Upadhyay 08/11/2022

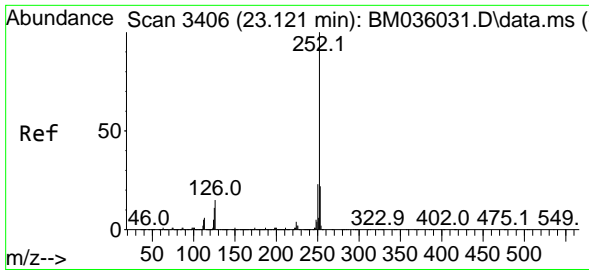


#88
 Benzo(b)fluoranthene
 Concen: 48.631 ng
 RT: 23.033 min Scan# 3391
 Delta R.T. 0.000 min
 Lab File: BM036190.D
 Acq: 10 Aug 2022 13:45



Tgt Ion: 252 Resp: 2351637
 Ion Ratio Lower Upper
 252 100
 253 22.2 17.6 26.4
 125 10.6 7.6 11.4





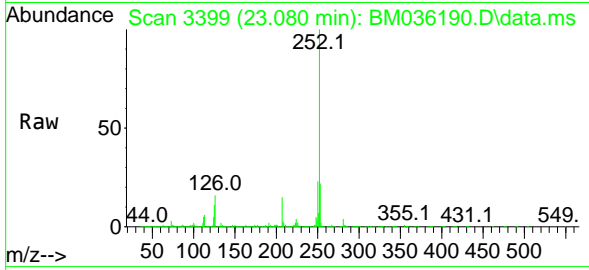
#89
 Benzo(k)fluoranthene
 Concen: 46.734 ng
 RT: 23.080 min Scan# 31
 Delta R.T. 0.000 min
 Lab File: BM036190.D
 Acq: 10 Aug 2022 13:45

Instrument :

BNA_M

Client Sample Id :

PB146797BS

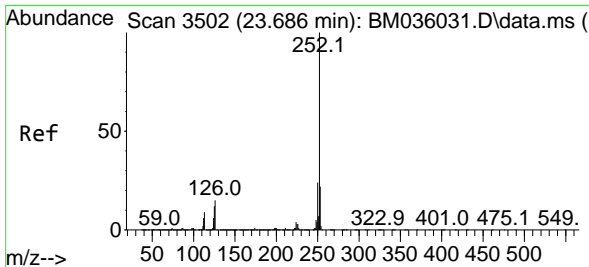
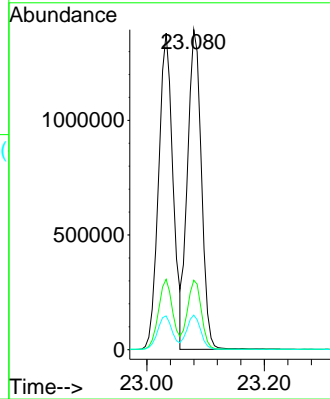
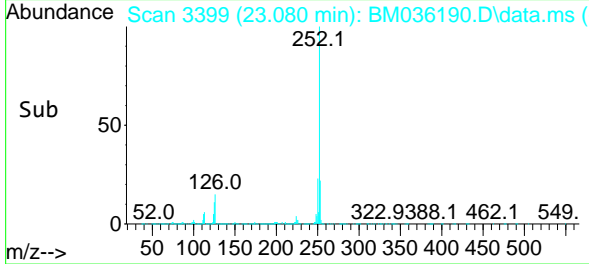


Tgt Ion: 252 Resp: 2282500
 Ion Ratio Lower Upper
 252 100
 253 21.7 17.5 26.3
 125 10.8 7.6 11.4

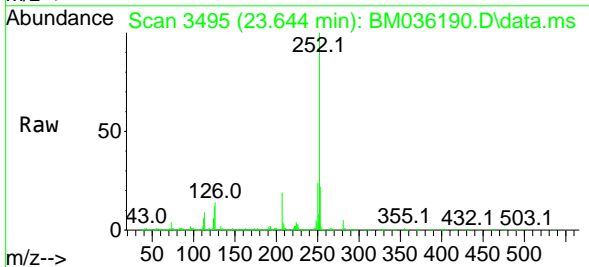
Manual Integrations

APPROVED

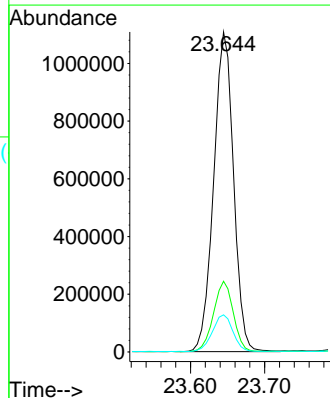
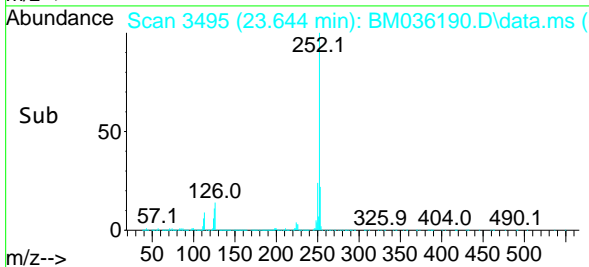
Reviewed By : Christian Giraldo 08/11/2022
 Supervised By : Jagrut Upadhyay 08/11/2022

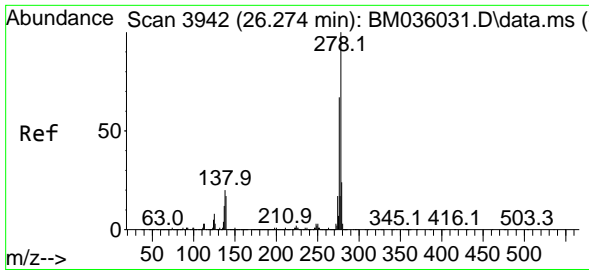


#90
 Benzo(a)pyrene
 Concen: 50.800 ng
 RT: 23.644 min Scan# 3495
 Delta R.T. 0.000 min
 Lab File: BM036190.D
 Acq: 10 Aug 2022 13:45



Tgt Ion: 252 Resp: 2061098
 Ion Ratio Lower Upper
 252 100
 253 22.1 17.2 25.8
 125 11.6 8.7 13.1





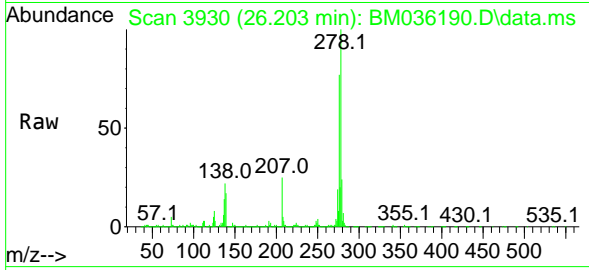
#91
 Dibenzo(a,h)anthracene
 Concen: 49.335 ng
 RT: 26.203 min Scan# 3942
 Delta R.T. 0.000 min
 Lab File: BM036190.D
 Acq: 10 Aug 2022 13:45

Instrument :

BNA_M

ClientSampleId :

PB146797BS

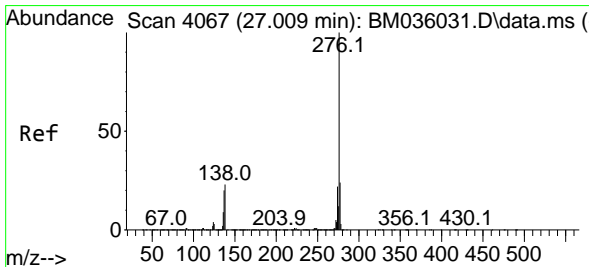
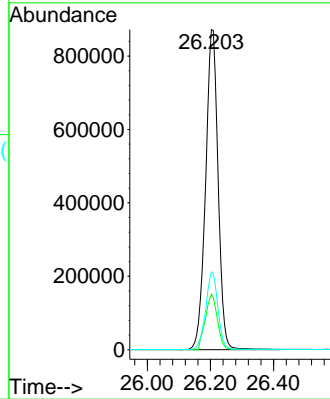
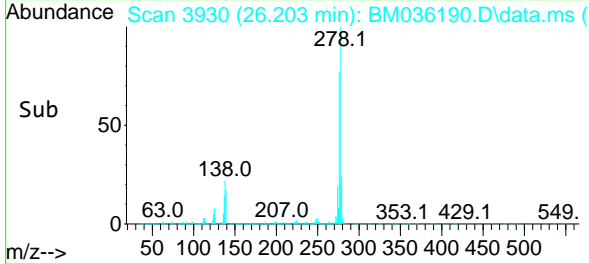


Tgt Ion:278 Resp: 2395220
 Ion Ratio Lower Upper
 278 100
 139 17.4 12.9 19.3
 279 24.3 18.7 28.1

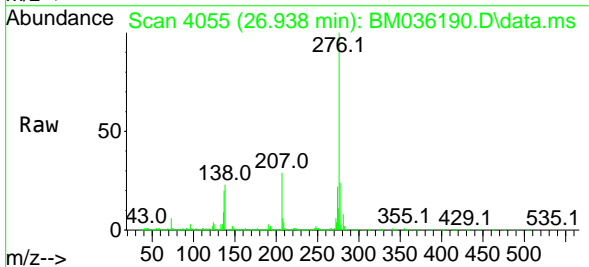
Manual Integrations

APPROVED

Reviewed By :Christian Giraldo 08/11/2022
 Supervised By :Jagrut Upadhyay 08/11/2022



#92
 Benzo(g,h,i)perylene
 Concen: 51.498 ng
 RT: 26.938 min Scan# 4055
 Delta R.T. -0.006 min
 Lab File: BM036190.D
 Acq: 10 Aug 2022 13:45



Tgt Ion:276 Resp: 2420483
 Ion Ratio Lower Upper
 276 100
 277 23.9 18.7 28.1
 138 22.7 17.6 26.4

