

Data Path : Z:\svoasrv\HPCHEM1\BNA\_M\Data\BM081022\  
 Data File : BM036197.D  
 Acq On : 10 Aug 2022 18:09  
 Operator : CG/JU  
 Sample : N3972-06  
 Misc :  
 ALS Vial : 12 Sample Multiplier: 1

Instrument :  
 BNA\_M  
 ClientSampleId :  
 SPN-15

Quant Time: Aug 10 22:27:02 2022  
 Quant Method : Z:\svoasrv\HPCHEM1\BNA\_M\Methods\8270-BM080122.M  
 Quant Title : ASP BNA STANDARDS FOR 5 POINT CALIBRATION  
 QLast Update : Wed Aug 10 22:19:26 2022  
 Response via : Initial Calibration

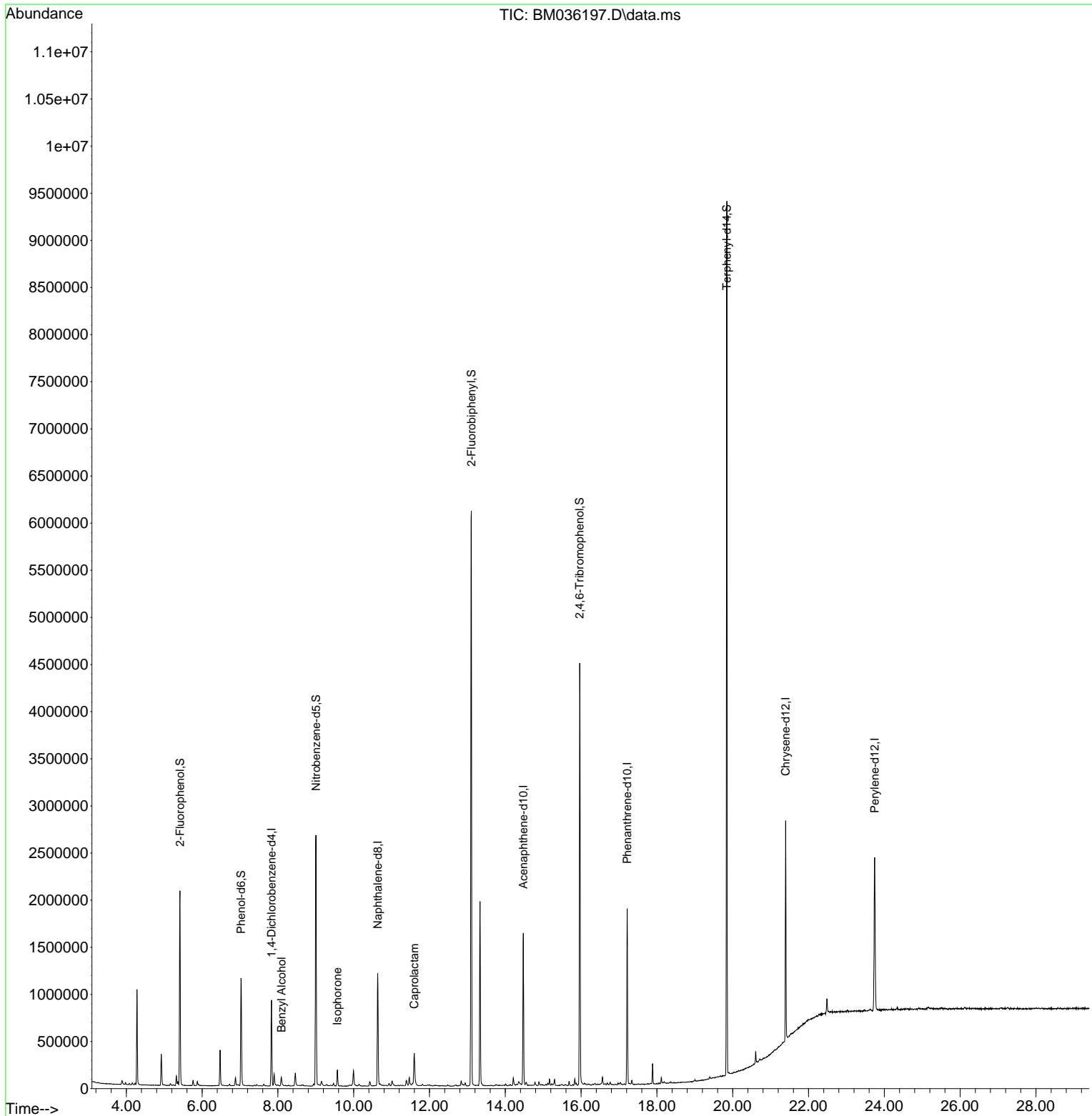
Compound	R.T.	QIon	Response	Conc	Units	Dev(Min)	
Internal Standards							
1) 1,4-Dichlorobenzene-d4	7.834	152	249117	20.000	ng	0.00	
21) Naphthalene-d8	10.634	136	995119	20.000	ng	0.00	
39) Acenaphthene-d10	14.475	164	548676	20.000	ng	0.00	
64) Phenanthrene-d10	17.216	188	1067918	20.000	ng	0.00	
76) Chrysene-d12	21.398	240	1050585	20.000	ng	0.00	
86) Perylene-d12	23.744	264	1133961	20.000	ng	0.00	
System Monitoring Compounds							
5) 2-Fluorophenol	5.416	112	900889	58.630	ng	0.00	
7) Phenol-d6	7.028	99	666248	34.076	ng	0.00	
23) Nitrobenzene-d5	9.004	82	1489489	83.786	ng	0.00	
42) 2,4,6-Tribromophenol	15.963	330	791621	122.986	ng	0.00	
45) 2-Fluorobiphenyl	13.104	172	3084254	82.997	ng	0.00	
79) Terphenyl-d14	19.845	244	4257982	79.942	ng	0.00	
Target Compounds							
15) Benzyl Alcohol	8.093	79	37581	2.864	ng		95
25) Isophorone	9.569	82	112019	3.873	ng		97
35) Caprolactam	11.598	113	73545	17.388	ng		96

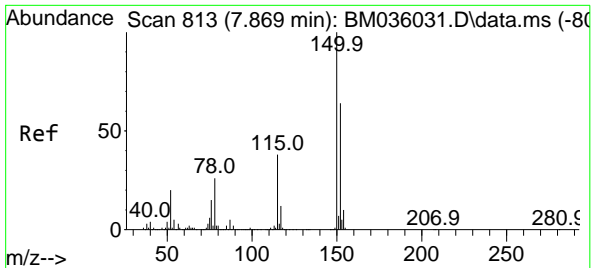
(#) = qualifier out of range (m) = manual integration (+) = signals summed

Data Path : Z:\svoasrv\HPCHEM1\BNA\_M\Data\BM081022\  
 Data File : BM036197.D  
 Acq On : 10 Aug 2022 18:09  
 Operator : CG/JU  
 Sample : N3972-06  
 Misc :  
 ALS Vial : 12 Sample Multiplier: 1

Instrument :  
 BNA\_M  
 ClientSampleId :  
 SPN-15

Quant Time: Aug 10 22:27:02 2022  
 Quant Method : Z:\svoasrv\HPCHEM1\BNA\_M\Methods\8270-BM080122.M  
 Quant Title : ASP BNA STANDARDS FOR 5 POINT CALIBRATION  
 QLast Update : Wed Aug 10 22:19:26 2022  
 Response via : Initial Calibration

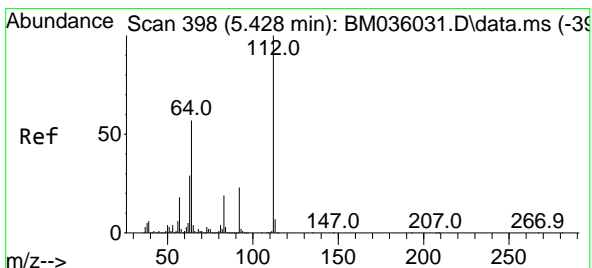
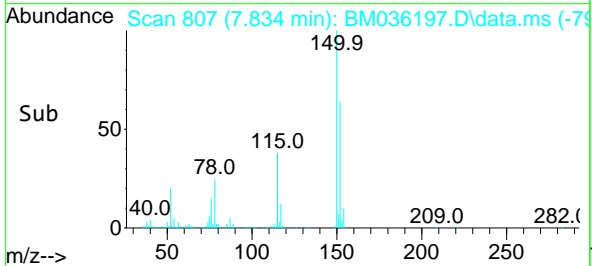
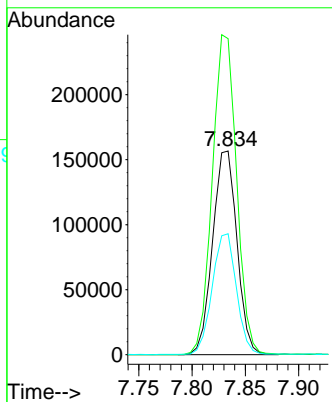
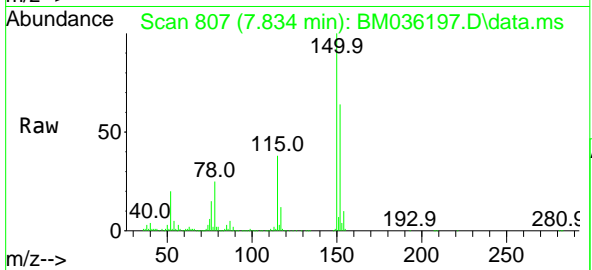




#1  
 1,4-Dichlorobenzene-d4  
 Concen: 20.000 ng  
 RT: 7.834 min Scan# 80  
 Delta R.T. -0.000 min  
 Lab File: BM036197.D  
 Acq: 10 Aug 2022 18:09

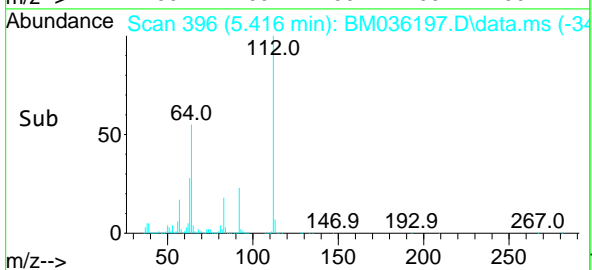
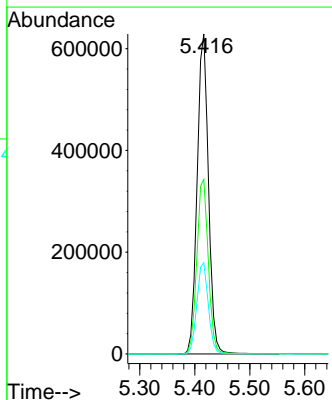
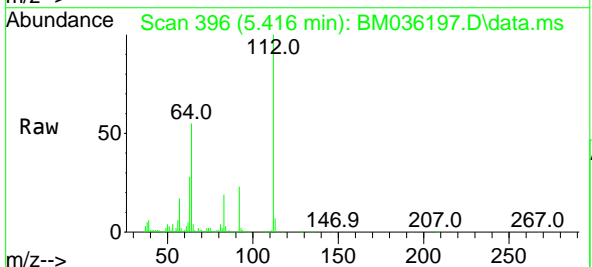
Instrument :  
 BNA\_M  
 ClientSampleId :  
 SPN-15

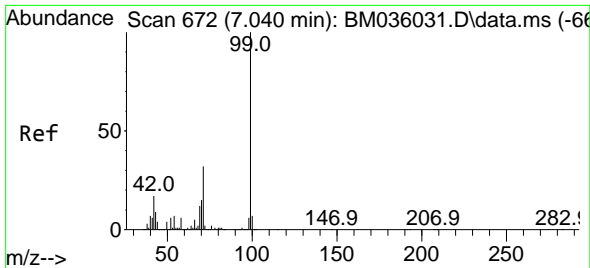
Tgt Ion:152 Resp: 249117  
 Ion Ratio Lower Upper  
 152 100  
 150 155.1 124.9 187.3  
 115 59.4 47.9 71.9



#5  
 2-Fluorophenol  
 Concen: 58.630 ng  
 RT: 5.416 min Scan# 396  
 Delta R.T. 0.000 min  
 Lab File: BM036197.D  
 Acq: 10 Aug 2022 18:09

Tgt Ion:112 Resp: 900889  
 Ion Ratio Lower Upper  
 112 100  
 64 54.6 47.8 71.6  
 63 28.5 26.6 40.0



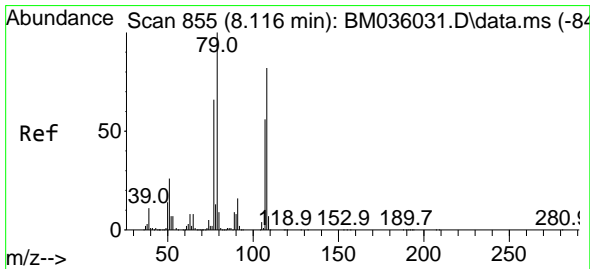
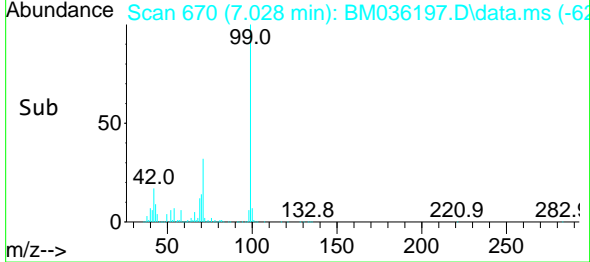
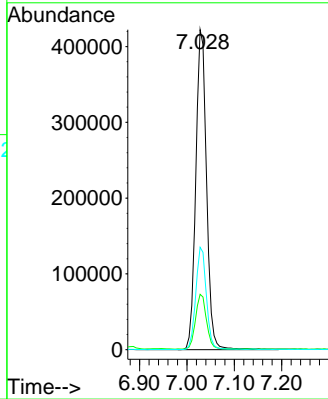
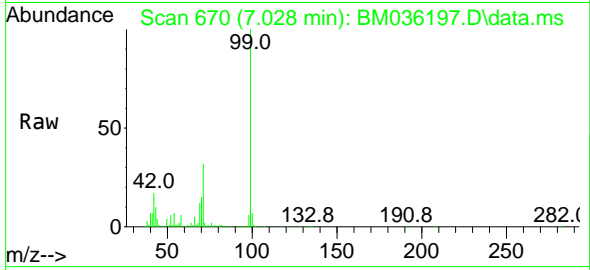


#7  
 Phenol-d6  
 Concen: 34.076 ng  
 RT: 7.028 min Scan# 61  
 Delta R.T. -0.006 min  
 Lab File: BM036197.D  
 Acq: 10 Aug 2022 18:09

Instrument :  
 BNA\_M  
 ClientSampleId :  
 SPN-15

Tgt Ion: 99 Resp: 666248

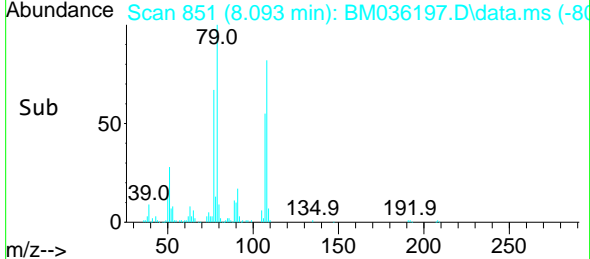
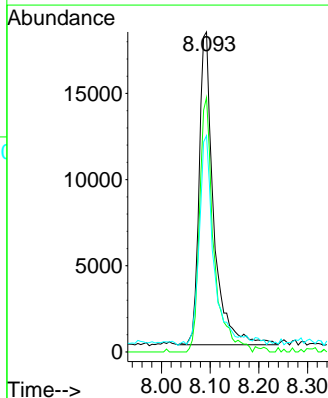
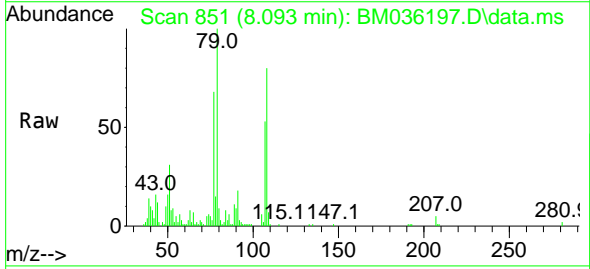
Ion	Ratio	Lower	Upper
99	100		
42	17.3	18.8	28.2#
71	32.0	30.2	45.2

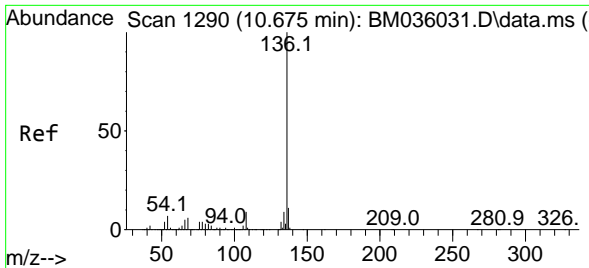


#15  
 Benzyl Alcohol  
 Concen: 2.864 ng  
 RT: 8.093 min Scan# 851  
 Delta R.T. 0.000 min  
 Lab File: BM036197.D  
 Acq: 10 Aug 2022 18:09

Tgt Ion: 79 Resp: 37581

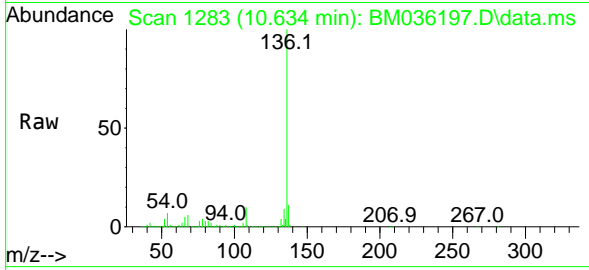
Ion	Ratio	Lower	Upper
79	100		
108	79.5	59.0	88.4
77	67.6	52.2	78.4



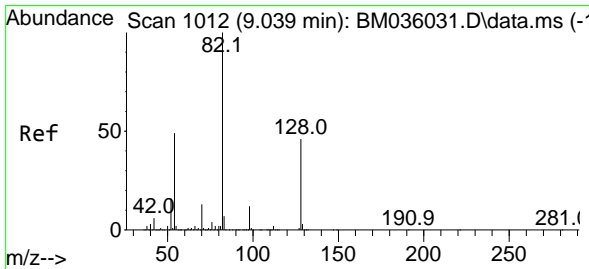
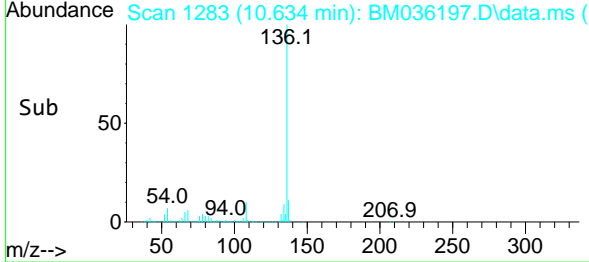
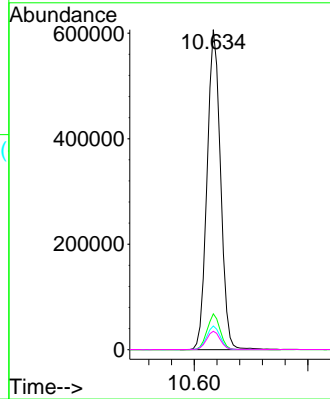


#21  
 Naphthalene-d8  
 Concen: 20.000 ng  
 RT: 10.634 min Scan# 11  
 Delta R.T. -0.006 min  
 Lab File: BM036197.D  
 Acq: 10 Aug 2022 18:09

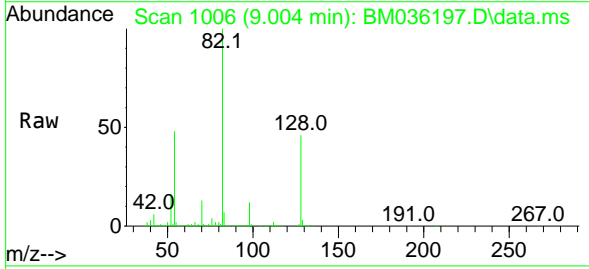
Instrument :  
 BNA\_M  
 ClientSampleId :  
 SPN-15



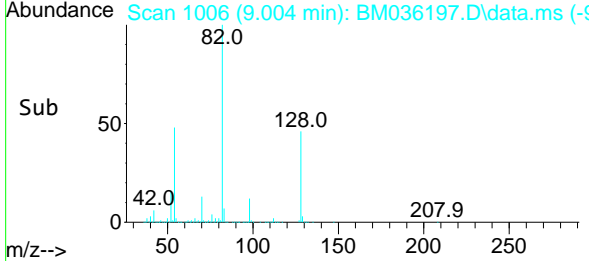
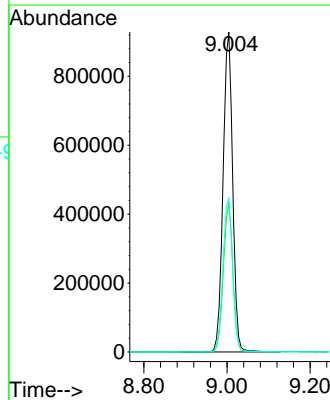
Tgt Ion:136 Resp: 995119  
 Ion Ratio Lower Upper  
 136 100  
 137 11.2 8.9 13.3  
 54 7.4 7.0 10.4  
 68 5.8 4.3 6.5

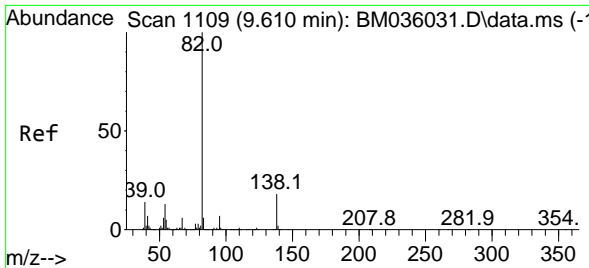


#23  
 Nitrobenzene-d5  
 Concen: 83.786 ng  
 RT: 9.004 min Scan# 1006  
 Delta R.T. 0.000 min  
 Lab File: BM036197.D  
 Acq: 10 Aug 2022 18:09



Tgt Ion: 82 Resp: 1489489  
 Ion Ratio Lower Upper  
 82 100  
 128 46.5 33.7 50.5  
 54 47.9 43.2 64.8



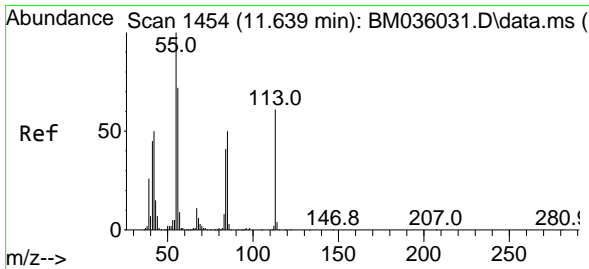
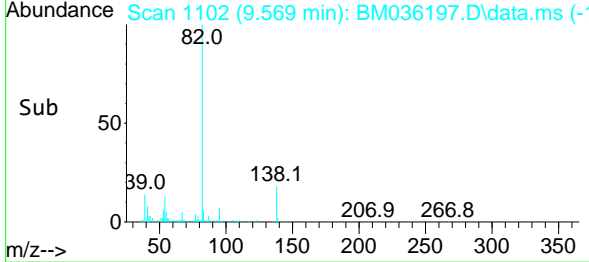
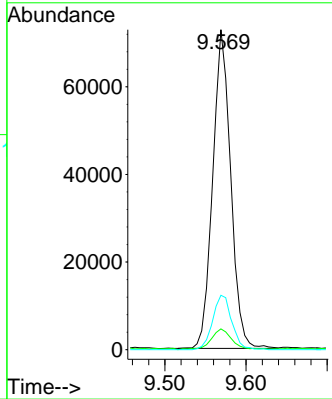
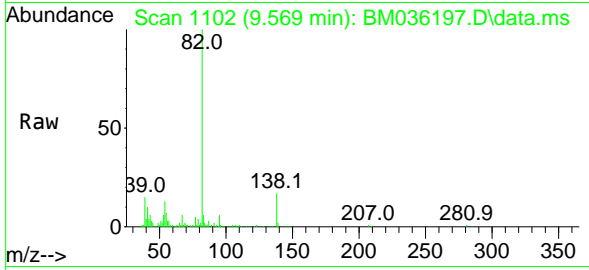


#25  
 Isophorone  
 Concen: 3.873 ng  
 RT: 9.569 min Scan# 11  
 Delta R.T. -0.006 min  
 Lab File: BM036197.D  
 Acq: 10 Aug 2022 18:09

Instrument :  
 BNA\_M  
 ClientSampleId :  
 SPN-15

Tgt Ion: 82 Resp: 112019

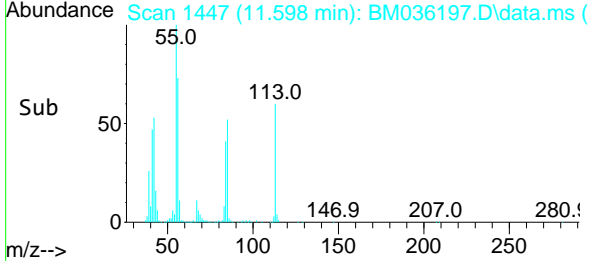
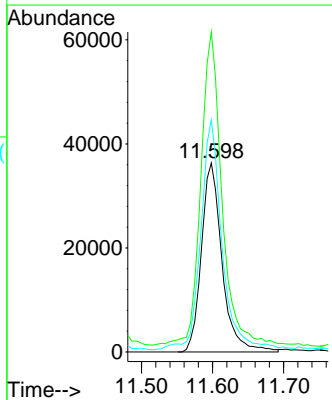
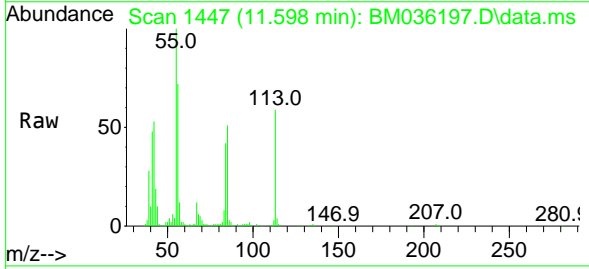
Ion	Ratio	Lower	Upper
82	100		
95	6.5	6.4	9.6
138	17.0	14.2	21.4

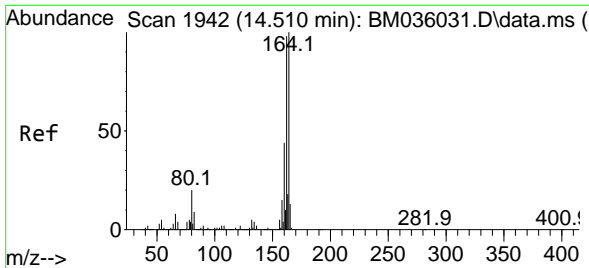


#35  
 Caprolactam  
 Concen: 17.388 ng  
 RT: 11.598 min Scan# 1447  
 Delta R.T. -0.012 min  
 Lab File: BM036197.D  
 Acq: 10 Aug 2022 18:09

Tgt Ion: 113 Resp: 73545

Ion	Ratio	Lower	Upper
113	100		
55	169.3	150.1	190.1
56	122.7	111.7	151.7

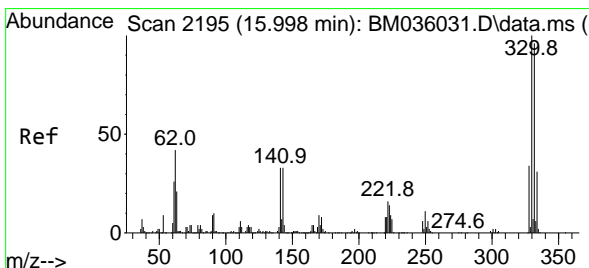
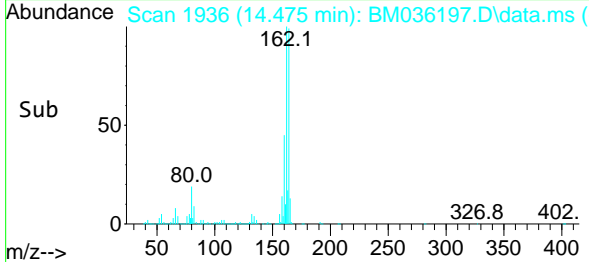
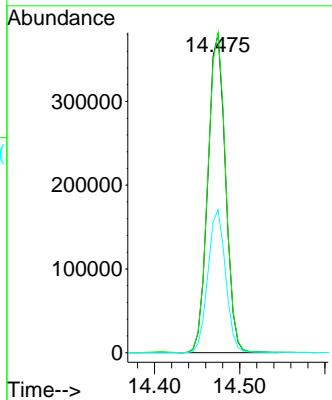
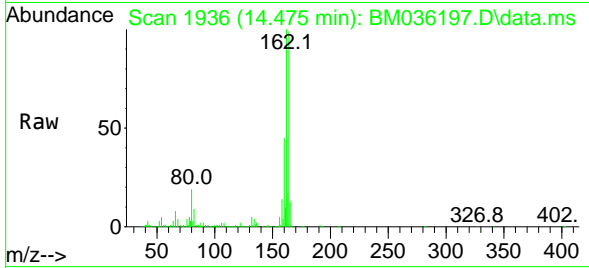




#39  
 Acenaphthene-d10  
 Concen: 20.000 ng  
 RT: 14.475 min Scan# 1942  
 Delta R.T. 0.000 min  
 Lab File: BM036197.D  
 Acq: 10 Aug 2022 18:09

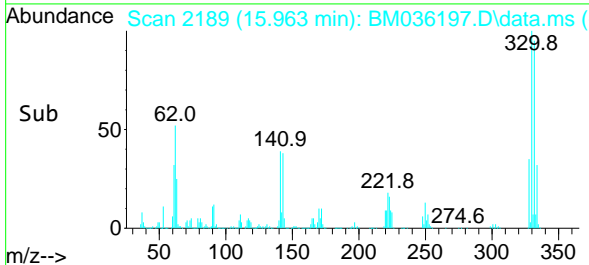
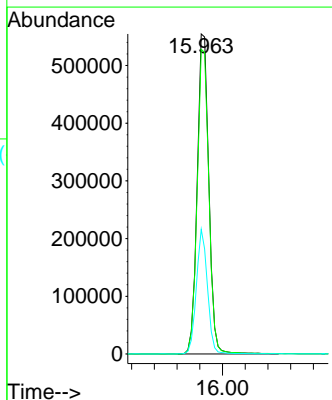
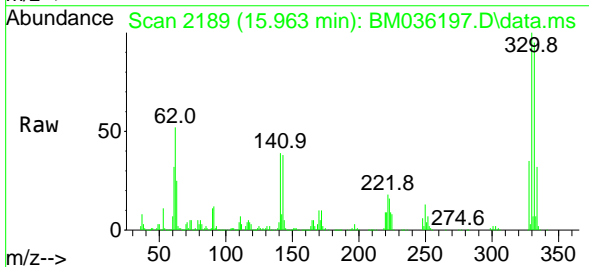
Instrument :  
 BNA\_M  
 ClientSampleId :  
 SPN-15

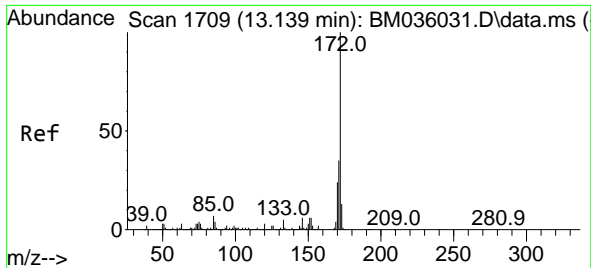
Tgt Ion:164 Resp: 548676  
 Ion Ratio Lower Upper  
 164 100  
 162 100.6 83.0 124.6  
 160 44.9 37.0 55.4



#42  
 2,4,6-Tribromophenol  
 Concen: 122.986 ng  
 RT: 15.963 min Scan# 2189  
 Delta R.T. -0.006 min  
 Lab File: BM036197.D  
 Acq: 10 Aug 2022 18:09

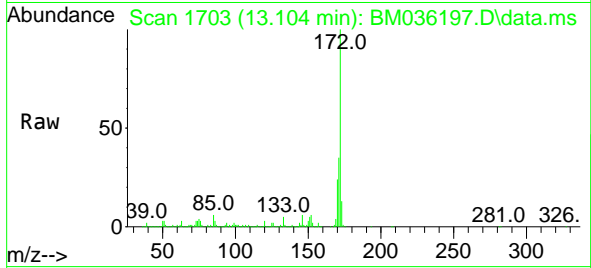
Tgt Ion:330 Resp: 791621  
 Ion Ratio Lower Upper  
 330 100  
 332 96.1 77.0 115.4  
 141 37.2 35.3 52.9



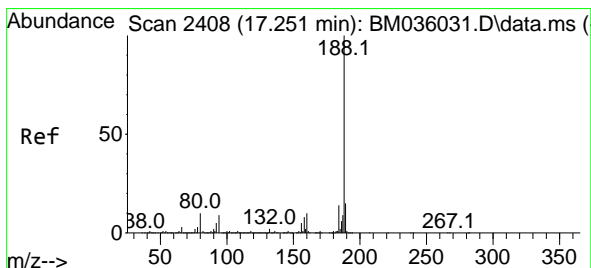
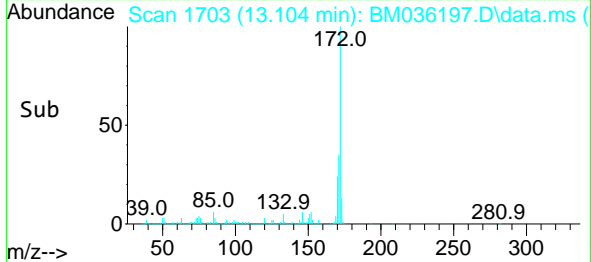
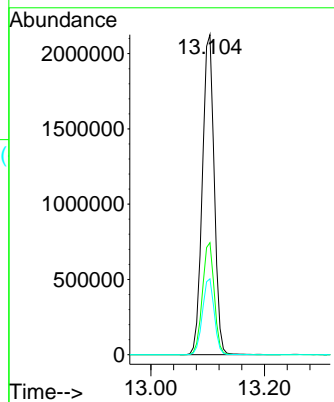


#45  
 2-Fluorobiphenyl  
 Concen: 82.997 ng  
 RT: 13.104 min Scan# 1  
 Delta R.T. 0.000 min  
 Lab File: BM036197.D  
 Acq: 10 Aug 2022 18:09

Instrument :  
 BNA\_M  
 ClientSampleId :  
 SPN-15

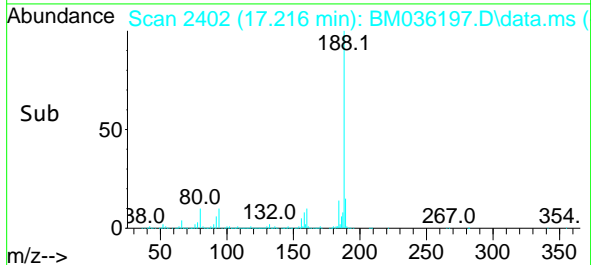
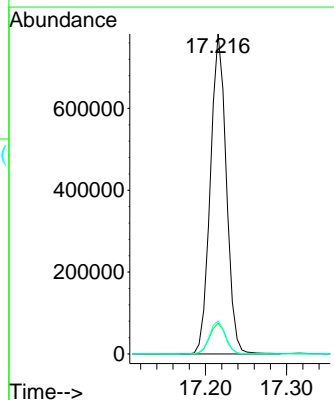
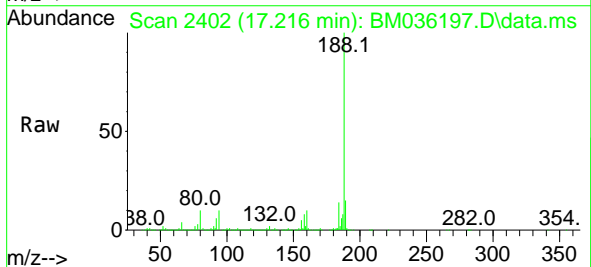


Tgt Ion:172 Resp: 3084254  
 Ion Ratio Lower Upper  
 172 100  
 171 35.0 28.5 42.7  
 170 23.7 18.7 28.1

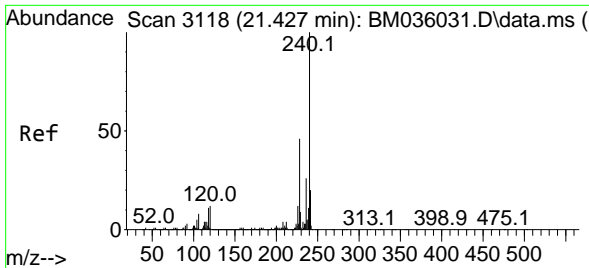


#64  
 Phenanthrene-d10  
 Concen: 20.000 ng  
 RT: 17.216 min Scan# 2402  
 Delta R.T. 0.000 min  
 Lab File: BM036197.D  
 Acq: 10 Aug 2022 18:09

Tgt Ion:188 Resp: 1067918  
 Ion Ratio Lower Upper  
 188 100  
 94 9.6 7.0 10.4  
 80 10.3 7.6 11.4



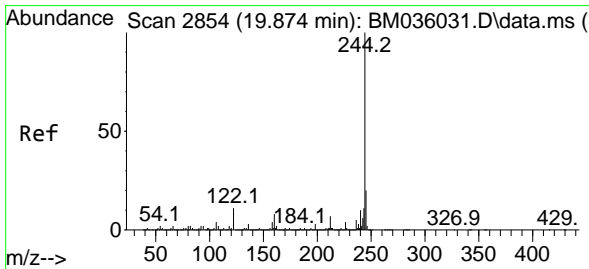
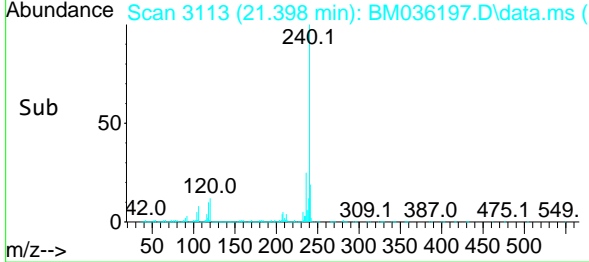
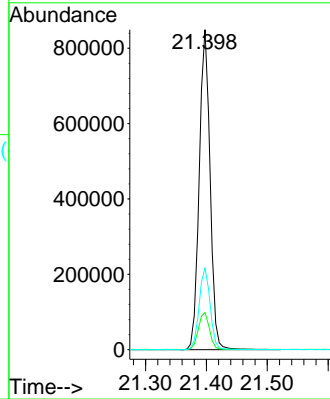
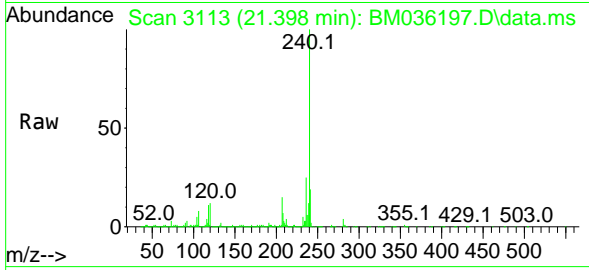




#76  
 Chrysene-d12  
 Concen: 20.000 ng  
 RT: 21.398 min Scan# 3113  
 Delta R.T. 0.000 min  
 Lab File: BM036197.D  
 Acq: 10 Aug 2022 18:09

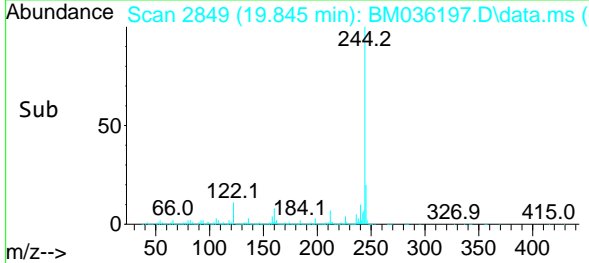
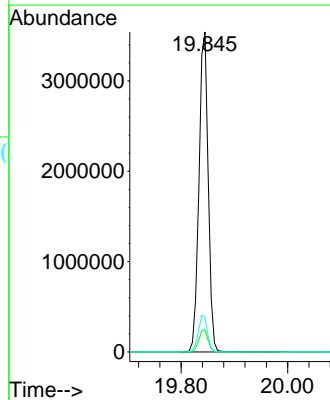
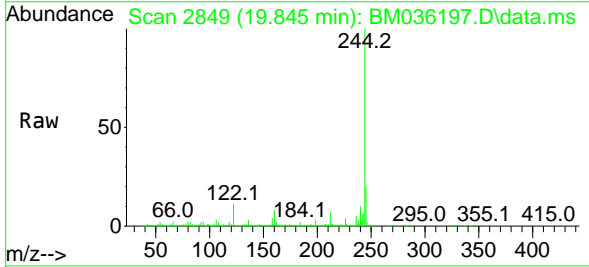
Instrument :  
 BNA\_M  
 ClientSampleId :  
 SPN-15

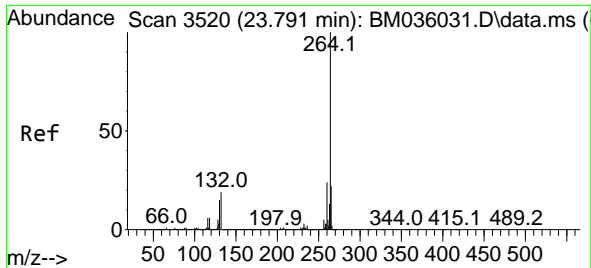
Tgt Ion:240 Resp: 1050585  
 Ion Ratio Lower Upper  
 240 100  
 120 11.6 9.4 14.0  
 236 25.4 20.6 30.8



#79  
 Terphenyl-d14  
 Concen: 79.942 ng  
 RT: 19.845 min Scan# 2849  
 Delta R.T. 0.000 min  
 Lab File: BM036197.D  
 Acq: 10 Aug 2022 18:09

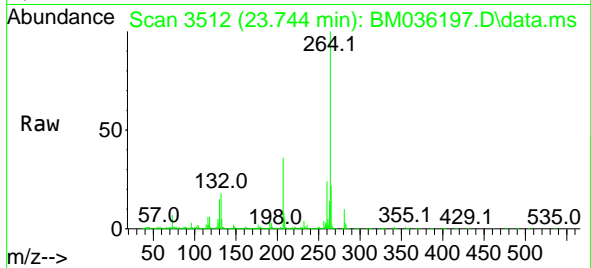
Tgt Ion:244 Resp: 4257982  
 Ion Ratio Lower Upper  
 244 100  
 212 7.0 6.2 9.4  
 122 10.9 8.3 12.5





#86  
 Perylene-d12  
 Concen: 20.000 ng  
 RT: 23.744 min Scan# 31  
 Delta R.T. 0.000 min  
 Lab File: BM036197.D  
 Acq: 10 Aug 2022 18:09

Instrument :  
 BNA\_M  
 ClientSampleId :  
 SPN-15



Tgt Ion:264 Resp: 1133961  
 Ion Ratio Lower Upper  
 264 100  
 260 23.6 18.9 28.3  
 265 22.2 17.5 26.3

