

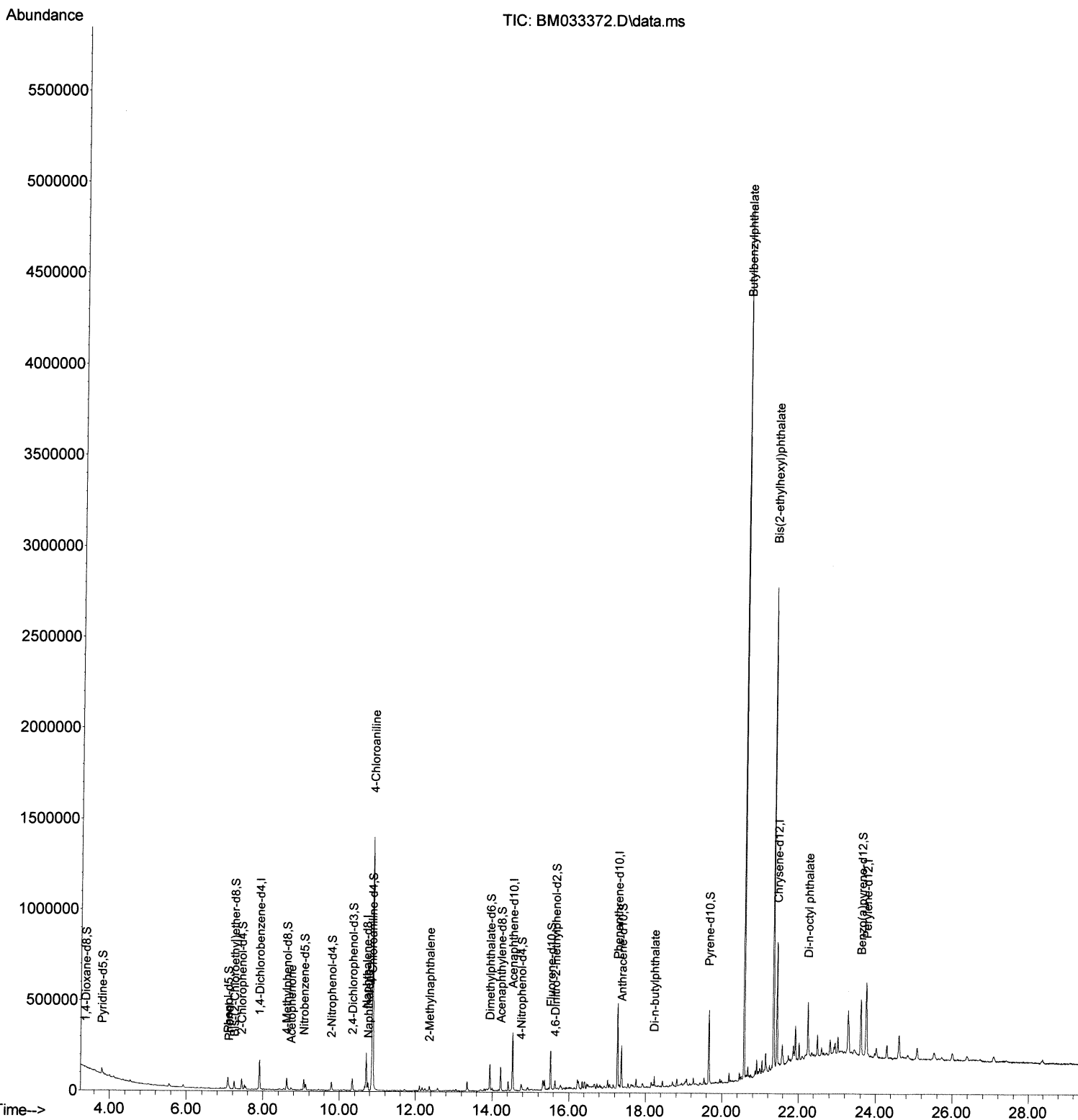
Data Path : Z:\svoasrv\HPCHEM1\BNA_M\Data\BM120921\
 Data File : BM033372.D
 Acq On : 09 Dec 2021 23:59
 Operator : CG/JU
 Sample : M4960-04ME
 Misc :
 ALS Vial : 26 Sample Multiplier: 1

Instrument :
 BNA_M
 ClientSampleId :
 BGKR9ME

Manual IntegrationsAPPROVED

Reviewed By :Jagrut Upadhyay 12/10/2021
 Supervised By :mohammad ahmed 12/15/2021

Quant Time: Dec 10 01:16:59 2021
 Quant Method : Z:\SVOASRV\HPCHEM1\BNA_M\METHODS\SFAM-EPA-BM120921.M
 Quant Title : SVOA CALIBRATION
 QLast Update : Thu Dec 09 13:25:37 2021
 Response via : Initial Calibration



Data Path : Z:\svoasrv\HPCHEM1\BNA_M\Data\BM120921\
 Data File : BM033372.D
 Acq On : 09 Dec 2021 23:59
 Operator : CG/JU
 Sample : M4960-04ME
 Misc :
 ALS Vial : 26 Sample Multiplier: 1

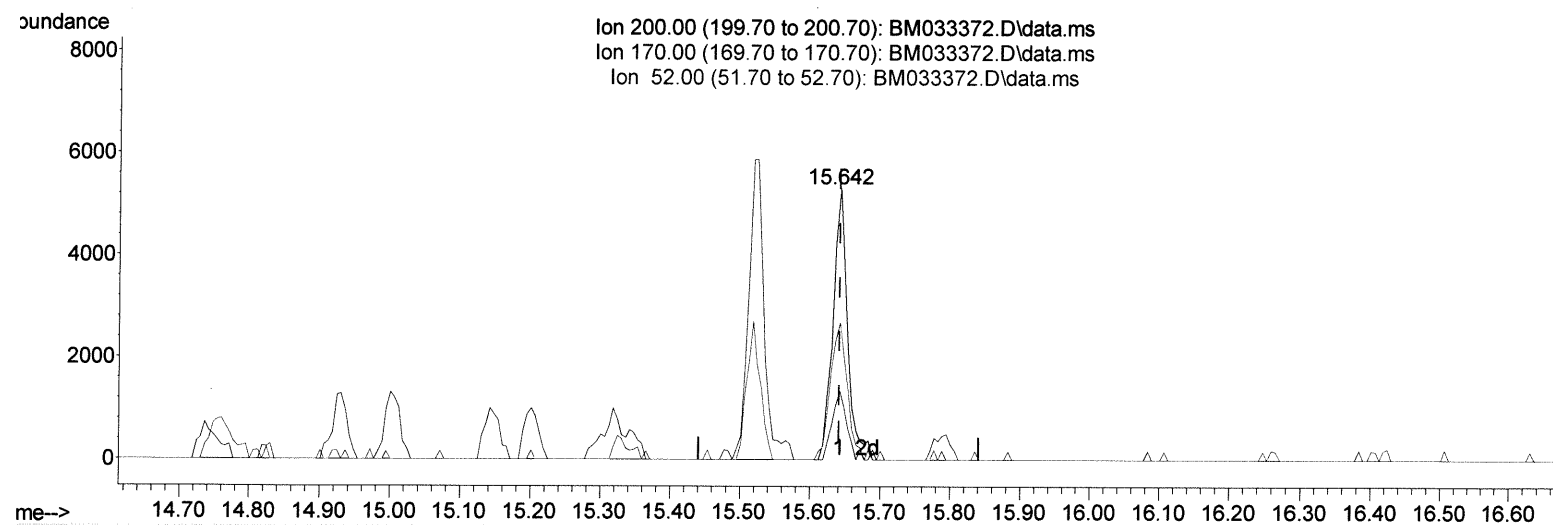
Instrument :
 BNA_M
 ClientSampleId :
 BGKR9ME

Manual IntegrationsAPPROVED

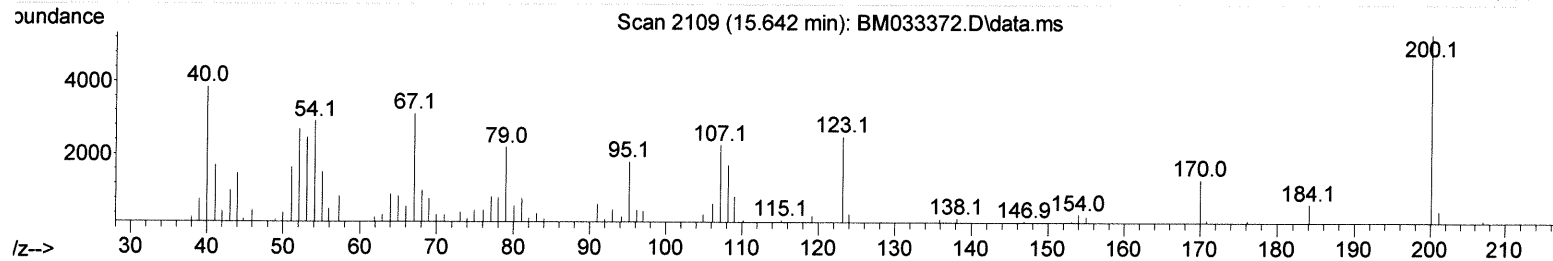
Quant Time: Dec 10 01:16:59 2021
 Quant Method : Z:\SVOASRV\HPCHEM1\BNA_M\METHODS\SFAM-EPA-BM120921.M
 Quant Title : SVOA CALIBRATION
 QLast Update : Thu Dec 09 13:25:37 2021
 Response via : Initial Calibration

Reviewed By :Jagrut Upadhyay 12/10/2021
 Supervised By :mohammad ahmed 12/15/2021

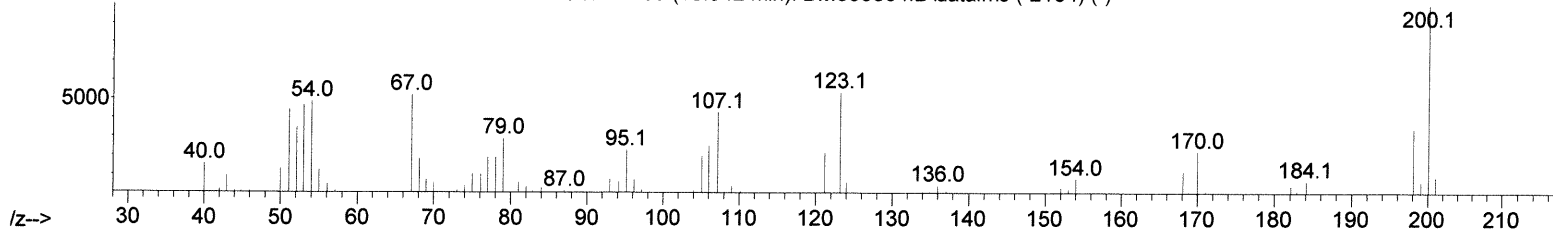
Ion 200.00 (199.70 to 200.70): BM033372.D\data.ms
 Ion 170.00 (169.70 to 170.70): BM033372.D\data.ms
 Ion 52.00 (51.70 to 52.70): BM033372.D\data.ms



Scan 2109 (15.642 min): BM033372.D\data.ms



Scan 2109 (15.642 min): BM033364.D\data.ms (-2104) (-)



TIC: BM033372.D\data.ms

(65) 4,6-Dinitro-2-methylphenol-d2 (S)

15.642min (+ 0.000) 5.04 ng/ul

response 7556

Ion	Exp%	Act%
200.00	100.00	100.00
170.00	23.80	25.10
52.00	62.70	50.56
0.00	0.00	0.00

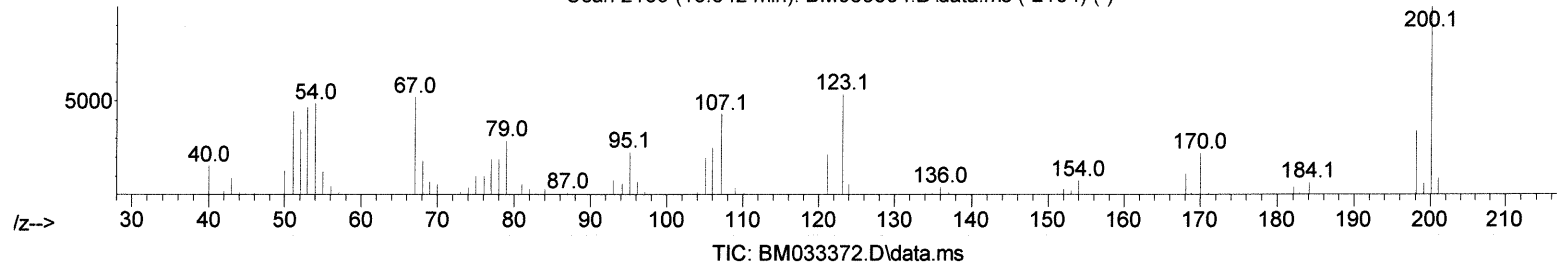
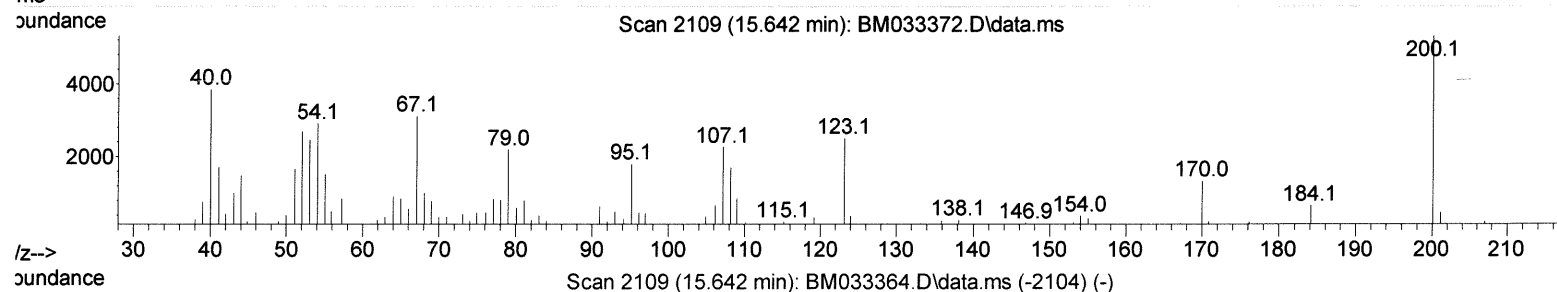
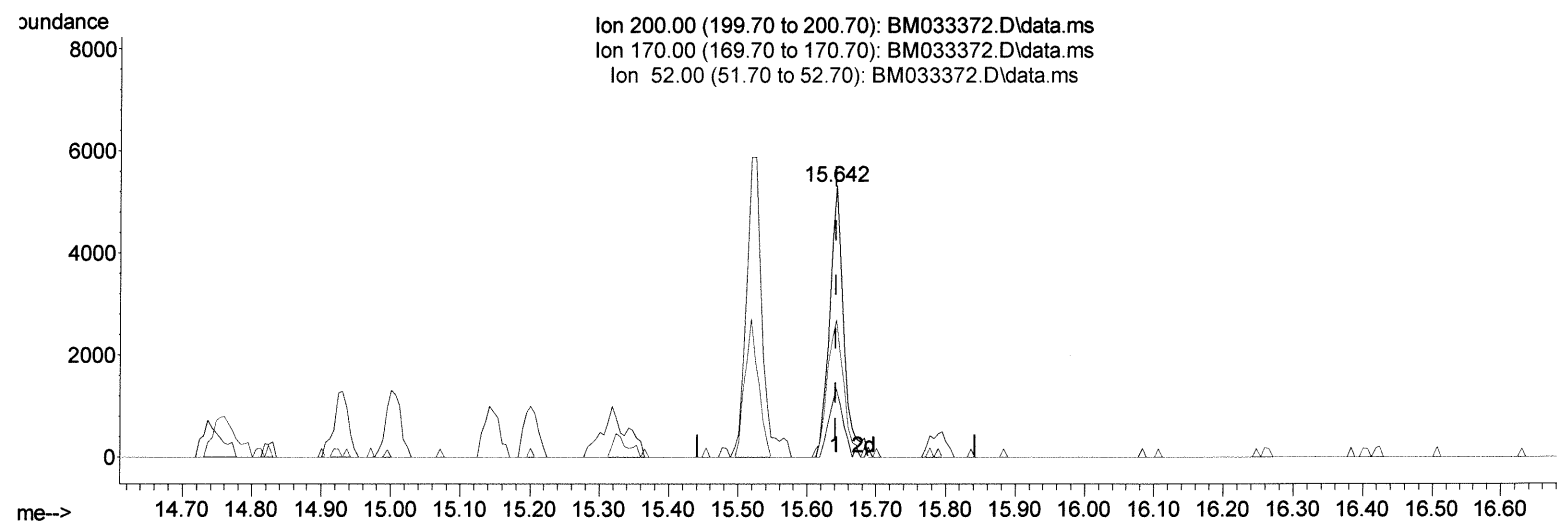
Data Path : Z:\svoasrv\HPCHEM1\BNA_M\Data\BM120921\
 Data File : BM033372.D
 Acq On : 09 Dec 2021 23:59
 Operator : CG/JU
 Sample : M4960-04ME
 Misc :
 ALS Vial : 26 Sample Multiplier: 1

Instrument :
 BNA_M
 ClientSampleId :
 BGKR9ME

Manual IntegrationsAPPROVED

Quant Time: Dec 10 01:16:59 2021
 Quant Method : Z:\SVOASRV\HPCHEM1\BNA_M\METHODS\SFAM-EPA-BM120921.M
 Quant Title : SVOA CALIBRATION
 QLast Update : Thu Dec 09 13:25:37 2021
 Response via : Initial Calibration

Reviewed By :Jagrut Upadhyay 12/10/2021
 Supervised By :mohammad ahmed 12/15/2021



(65) 4,6-Dinitro-2-methylphenol-d2 (S)

15.642min (+ 0.000) 5.12 ng/ul m

response 7686

Ion	Exp%	Act%
200.00	100.00	100.00
170.00	23.80	25.10
52.00	62.70	50.56
0.00	0.00	0.00

Data Path : Z:\svoasrv\HPCHEM1\BNA_M\Data\BM120921\
 Data File : BM033372.D
 Acq On : 09 Dec 2021 23:59
 Operator : CG/JU
 Sample : M4960-04ME
 Misc :
 ALS Vial : 26 Sample Multiplier: 1

Instrument :
 BNA_M
 ClientSampleId :
 BGKR9ME

Manual IntegrationsAPPROVED

Reviewed By :Jagrut Upadhyay 12/10/2021
 Supervised By :mohammad ahmed 12/15/2021

Quant Time: Dec 10 01:16:59 2021
 Quant Method : Z:\SVOASRV\HPCHEM1\BNA_M\METHODS\SFAM-EPA-BM120921.M
 Quant Title : SVOA CALIBRATION
 Last Update : Thu Dec 09 13:25:37 2021
 Response via : Initial Calibration

Compound	R.T.	QIon	Response	Conc	Units	Dev(Min)
Internal Standards						
1) 1,4-Dichlorobenzene-d4	7.907	152	38117	20.000	ng/ul	0.00
20) Naphthalene-d8	10.701	136	146079	20.000	ng/ul	0.00
38) Acenaphthene-d10	14.530	164	101023	20.000	ng/ul	0.00
64) Phenanthrene-d10	17.271	188	248623	20.000	ng/ul	0.00
79) Chrysene-d12	21.436	240	303795	20.000	ng/ul	0.00
88) Perylene-d12	23.753	264	278601	20.000	ng/ul	0.00
System Monitoring Compounds						
3) 1,4-Dioxane-d8	3.366	96	1722	1.698	ng/ul	0.00
4) Pyridine-d5	3.796	84	17719	6.025	ng/ul	0.01
7) Phenol-d5	7.078	99	26891	7.450	ng/ul	0.00
9) Bis-(2-Chloroethyl)eth...	7.242	67	20441	8.651	ng/ul	0.00
11) 2-Chlorophenol-d4	7.442	132	19484	7.710	ng/ul	0.00
15) 4-Methylphenol-d8	8.613	113	21328	7.549	ng/ul	0.00
21) Nitrobenzene-d5	9.072	128	10392	8.767	ng/ul	0.00
24) 2-Nitrophenol-d4	9.789	143	9814	8.070	ng/ul	0.00
28) 2,4-Dichlorophenol-d3	10.331	165	20010	8.707	ng/ul	0.00
31) 4-Chloroaniline-d4	10.848	131	24275	7.124	ng/ul	0.00
46) Dimethylphthalate-d6	13.942	166	78405	10.387	ng/ul	0.00
49) Acenaphthylene-d8	14.224	160	81883	8.751	ng/ul	0.00
54) 4-Nitrophenol-d4	14.754	143	7736	5.645	ng/ul	0.00
60) Fluorene-d10	15.524	176	70287	10.410	ng/ul	0.00
65) 4,6-Dinitro-2-methylph...	15.642	200	7686m	5.122	ng/ul	0.00
73) Anthracene-d10	17.371	188	123383	10.042	ng/ul	0.00
81) Pyrene-d10	19.653	212	167416	9.860	ng/ul	0.00
92) Benzo(a)pyrene-d12	23.606	264	140042	9.274	ng/ul	0.00
Target Compounds						
8) Phenol	7.107	94	7047	1.895	ng/ul	98
16) Acetophenone	8.736	105	5451	1.165	ng/ul	95
30) Naphthalene	10.754	128	30557	3.754	ng/ul	96
32) 4-Chloroaniline	10.872	127	562617	164.287	ng/ul	99
36) 2-Methylnaphthalene	12.360	142	10858	1.967	ng/ul	97
78) Di-n-butylphthalate	18.230	149	36415	2.469	ng/ul	99
83) Butylbenzylphthalate	20.577	149	1264740	157.587	ng/ul	93
86) Bis(2-ethylhexyl)phtha...	21.336	149	884588	76.689	ng/ul	100
89) Di-n-octyl phthalate	22.241	149	244032	11.947	ng/ul	100

(#) = qualifier out of range (m) = manual integration (+) = signals summed