

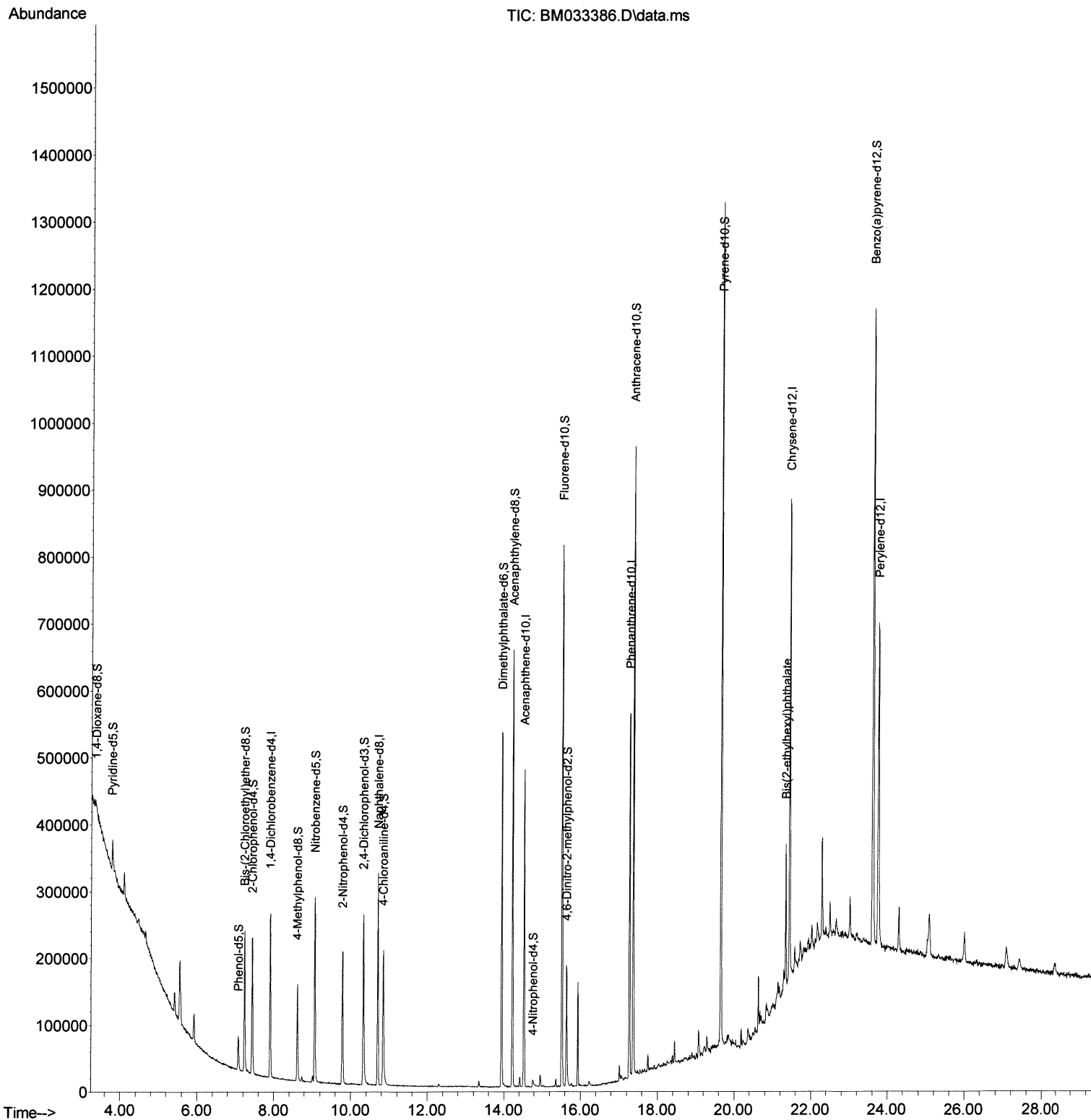
Data Path : Z:\svoasrv\HPCHEM1\BNA_M\Data\BM120921\
Data File : BM033386.D
Acq On : 10 Dec 2021 08:57
Operator : CG/JU
Sample : M4985-09
Misc :
ALS Vial : 41 Sample Multiplier: 1

Instrument :
BNA_M
ClientSampleId :
EW5S1

Manual IntegrationsAPPROVED

Quant Time: Dec 10 13:01:53 2021
Quant Method : Z:\SVOASRV\HPCHEM1\BNA_M\METHODS\SFAM-EPA-BM120921.M
Quant Title : SVOA CALIBRATION
QLast Update : Thu Dec 09 13:25:37 2021
Response via : Initial Calibration

Reviewed By :Jagrut Upadhyay 12/10/2021
Supervised By :mohammad ahmed 12/15/2021



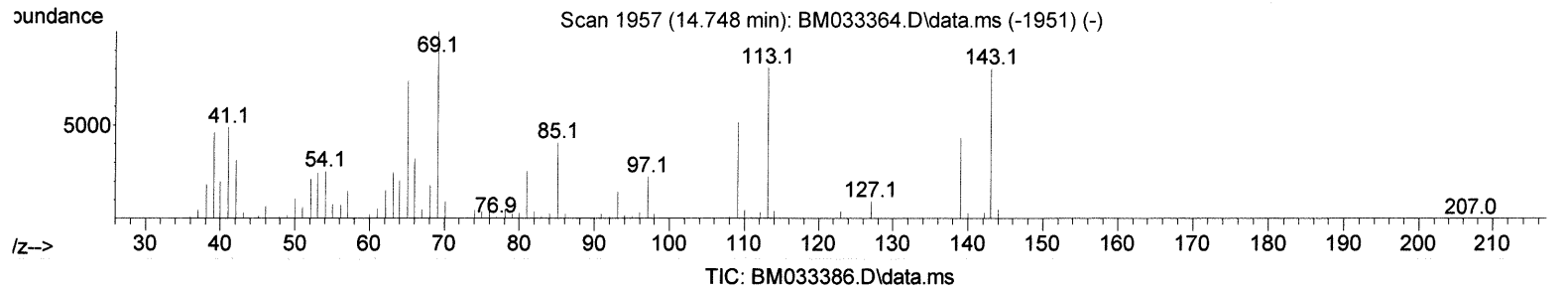
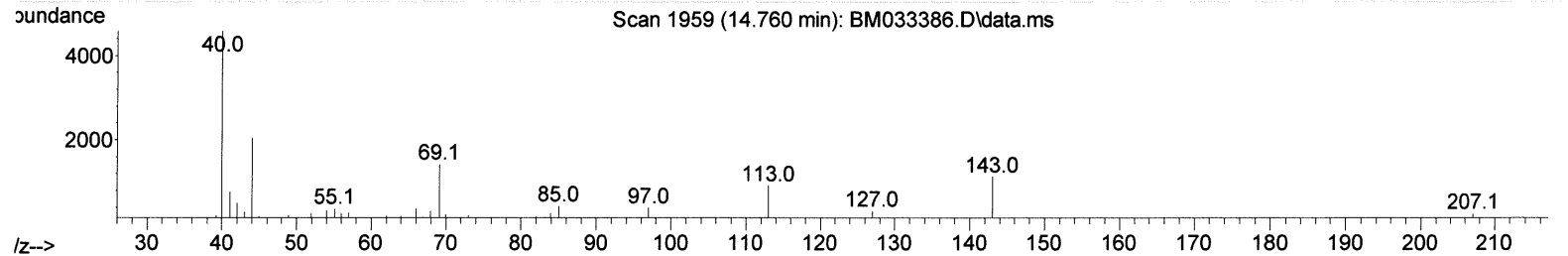
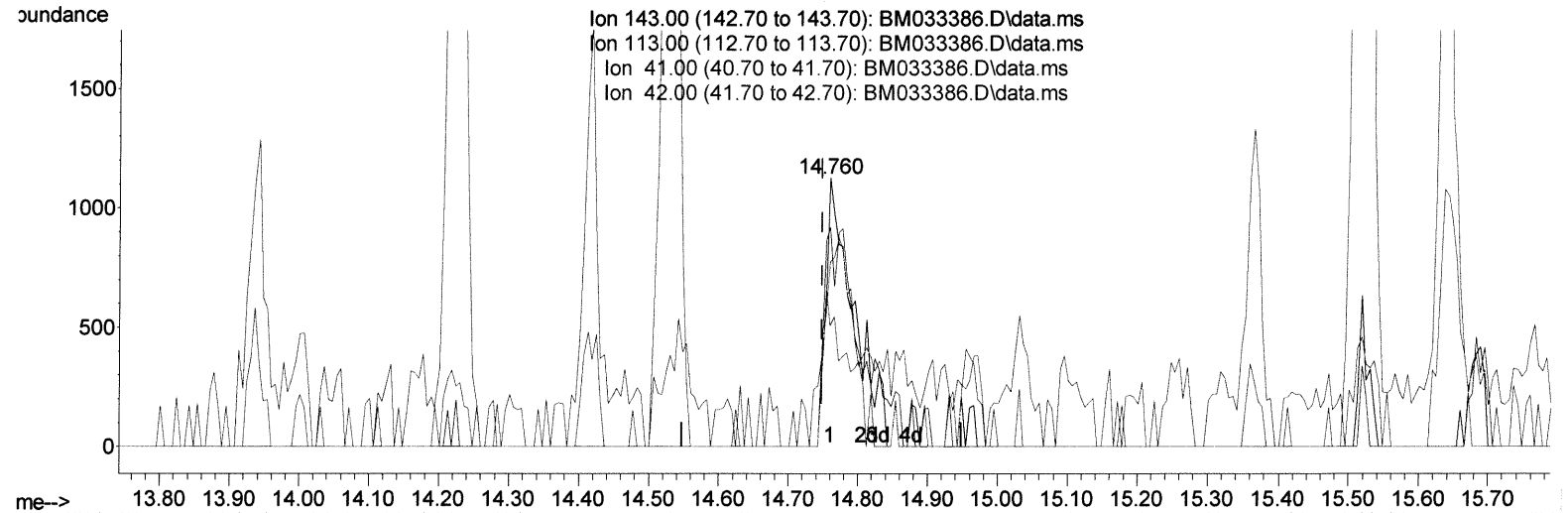
Data Path : Z:\svoasrv\HPCHEM1\BNA_M\Data\BM120921\
 Data File : BM033386.D
 Acq On : 10 Dec 2021 08:57
 Operator : CG/JU
 Sample : M4985-09
 Misc :
 ALS Vial : 41 Sample Multiplier: 1

Instrument :
 BNA_M
 ClientSampleId :
 EW5S1

Manual IntegrationsAPPROVED

Quant Time: Dec 10 13:01:53 2021
 Quant Method : Z:\SVOASRV\HPCHEM1\BNA_M\METHODS\SFAM-EPA-BM120921.M
 Quant Title : SVOA CALIBRATION
 QLast Update : Thu Dec 09 13:25:37 2021
 Response via : Initial Calibration

Reviewed By :Jagrut Upadhyay 12/10/2021
 Supervised By :mohammad ahmed 12/15/2021



(54) 4-Nitrophenol-d4 (S)

14.760min (+ 0.012) 1.05 ng/ul

response 2091

Ion	Exp%	Act%
143.00	100.00	100.00
113.00	105.00	81.60#
41.00	57.20	68.80#
42.00	39.50	45.16

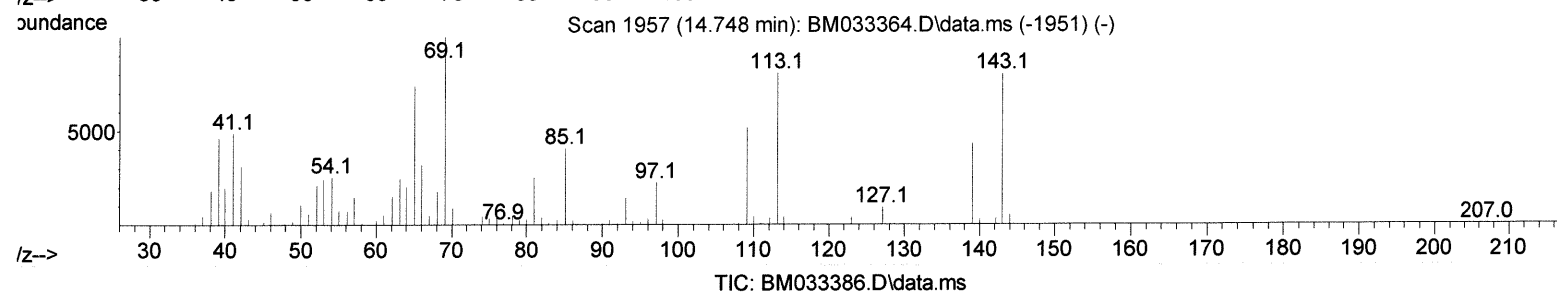
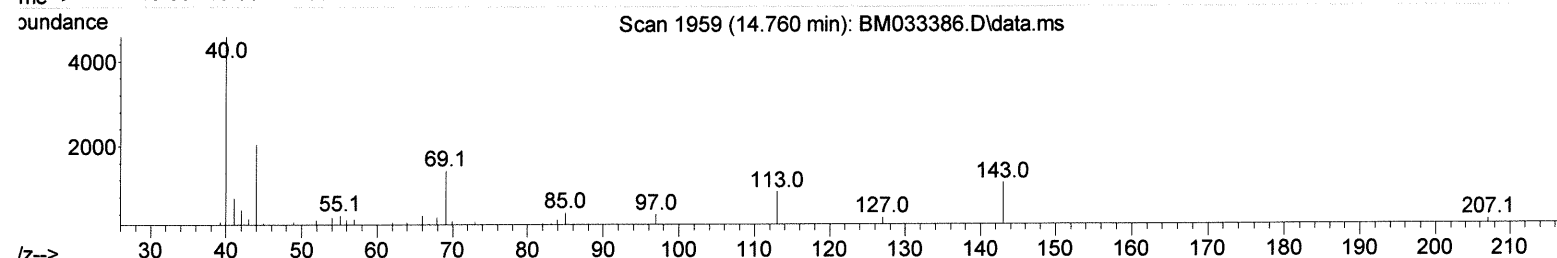
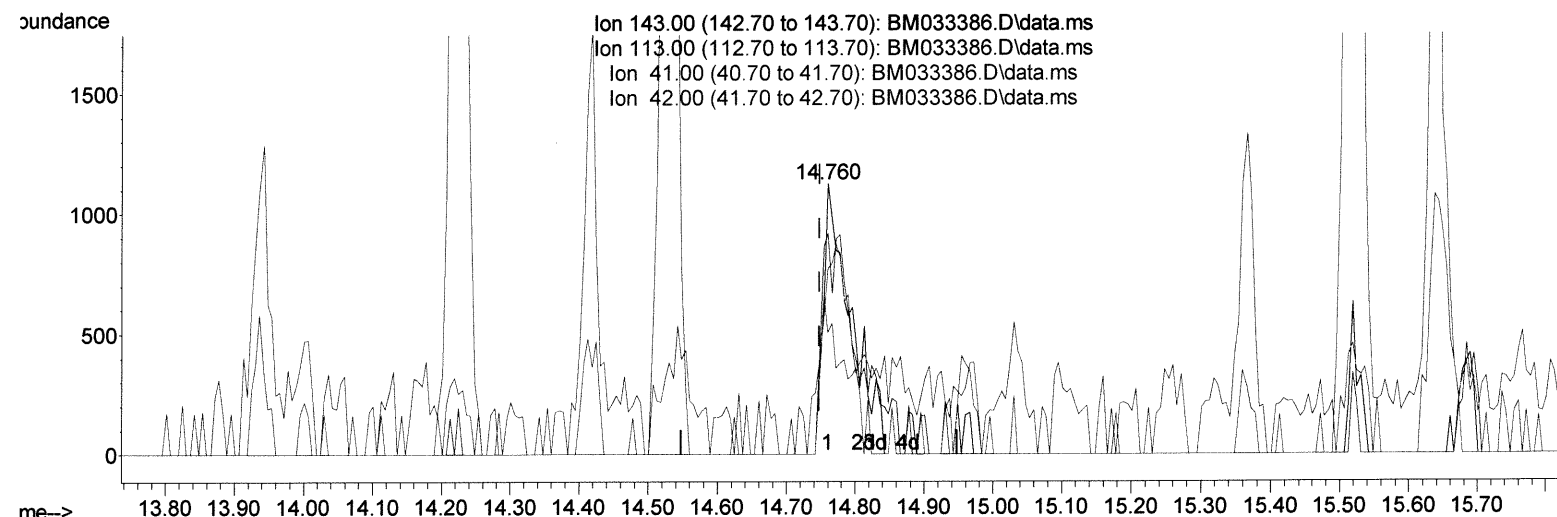
Data Path : Z:\svoasrv\HPCHEM1\BNA_M\Data\BM120921\
 Data File : BM033386.D
 Acq On : 10 Dec 2021 08:57
 Operator : CG/JU
 Sample : M4985-09
 Misc :
 ALS Vial : 41 Sample Multiplier: 1

Instrument :
 BNA_M
 ClientSampleId :
 EW5S1

Manual IntegrationsAPPROVED

Quant Time: Dec 10 13:01:53 2021
 Quant Method : Z:\SVOASRV\HPCHEM1\BNA_M\METHODS\SFAM-EPA-BM120921.M
 Quant Title : SVOA CALIBRATION
 QLast Update : Thu Dec 09 13:25:37 2021
 Response via : Initial Calibration

Reviewed By :Jagrut Upadhyay 12/10/2021
 Supervised By :mohammad ahmed 12/15/2021



(54) 4-Nitrophenol-d4 (S)

14.760min (+ 0.012) 1.45 ng/ul m

response 2903

Ion	Exp%	Act%
143.00	100.00	100.00
113.00	105.00	81.60#
41.00	57.20	68.80#
42.00	39.50	45.16

जुल २०२१

Data Path : Z:\svoasrv\HPCHEM1\BNA_M\Data\BM120921\
 Data File : BM033386.D
 Acq On : 10 Dec 2021 08:57
 Operator : CG/JU
 Sample : M4985-09
 Misc :
 ALS Vial : 41 Sample Multiplier: 1

Instrument :
 BNA_M
 ClientSampleId :
 EW5S1

Manual IntegrationsAPPROVED

Reviewed By :Jagrut Upadhyay 12/10/2021
 Supervised By :mohammad ahmed 12/15/2021

Quant Time: Dec 10 13:01:53 2021
 Quant Method : Z:\SVOASRV\HPCHEM1\BNA_M\METHODS\SFAM-EPA-BM120921.M
 Quant Title : SVOA CALIBRATION
 Last Update : Thu Dec 09 13:25:37 2021
 Response via : Initial Calibration

Compound	R.T.	QIon	Response	Conc	Units	Dev(Min)
Internal Standards						
1) 1,4-Dichlorobenzene-d4	7.907	152	60095	20.000	ng/ul	0.00
20) Naphthalene-d8	10.701	136	239793	20.000	ng/ul	0.00
38) Acenaphthene-d10	14.530	164	147484	20.000	ng/ul	0.00
64) Phenanthrene-d10	17.271	188	313941	20.000	ng/ul	0.00
79) Chrysene-d12	21.436	240	330974	20.000	ng/ul	0.00
88) Perylene-d12	23.753	264	330828	20.000	ng/ul	0.00
System Monitoring Compounds						
3) 1,4-Dioxane-d8	3.366	96	6653	4.160	ng/ul	0.00
4) Pyridine-d5	3.790	84	25565	5.514	ng/ul	0.00
7) Phenol-d5	7.078	99	27258	4.790	ng/ul	0.00
9) Bis-(2-Chloroethyl)eth...	7.237	67	102586	27.536	ng/ul	0.00
11) 2-Chlorophenol-d4	7.437	132	82974	20.826	ng/ul	-0.01
15) 4-Methylphenol-d8	8.613	113	51543	11.572	ng/ul	0.00
21) Nitrobenzene-d5	9.066	128	52102	26.778	ng/ul	0.00
24) 2-Nitrophenol-d4	9.789	143	50065	25.080	ng/ul	0.00
28) 2,4-Dichlorophenol-d3	10.325	165	88888	23.562	ng/ul	0.00
31) 4-Chloroaniline-d4	10.842	131	104004	18.594	ng/ul	0.00
46) Dimethylphthalate-d6	13.942	166	327928	29.759	ng/ul	0.00
49) Acenaphthylene-d8	14.224	160	411266	30.106	ng/ul	0.00
54) 4-Nitrophenol-d4	14.760	143	2903m	1.451	ng/ul	0.01
60) Fluorene-d10	15.519	176	295613	29.991	ng/ul	0.00
65) 4,6-Dinitro-2-methylph...	15.636	200	26645	14.062	ng/ul	0.00
73) Anthracene-d10	17.365	188	497630	32.073	ng/ul	0.00
81) Pyrene-d10	19.654	212	621104	33.577	ng/ul	0.00
92) Benzo(a)pyrene-d12	23.606	264	598519	33.378	ng/ul	0.00

Target Compounds					Qvalue
86) Bis(2-ethylhexyl)phtha...	21.336	149	51917	4.131 ng/ul#	97

(#) = qualifier out of range (m) = manual integration (+) = signals summed