

Data Path : Z:\SVOASRV\HPCHEM1\BNA M\DATA\BM080719\
 Data File : BM021953.D
 Acq On : 09 Aug 2019 04:27
 Operator : HP/JU
 Sample : K4029-11
 Misc :
 ALS Vial : 15 Sample Multiplier: 1

Instrument :
 BNA_M
ClientSampled :
 BENY1

Manual Integrations
APPROVED
 Sohil
 8/13/2019 8:29:53 AM

Quant Time: Aug 09 06:05:24 2019
 Quant Method : Z:\SVOASRV\HPCHEM1\BNA M\METHODS\SOM-EPA-SIM-BM080319.M
 Quant Title : ASP BNA STANDARDS FOR 5 POINT CALIBRATION
 QLast Update : Fri Aug 09 01:29:50 2019
 Response via : Initial Calibration

Internal Standards	R.T.	QIon	Response	Conc	Units	Dev(Min)
1) 1,4-Dichlorobenzene-d4	7.62	152	907	0.40	ng/ul	0.00
2) Naphthalene-d8	10.39	136	3809	0.40	ng/ul	-0.02
6) Acenaphthene-d10	14.27	164	1993	0.40	ng/ul	0.00
10) Phenanthrene-d10	17.03	188	4362m	0.40	ng/ul	-0.02
16) Chrysene-d12	21.23	240	4210m	0.40	ng/ul	-0.01
20) Perylene-d12	23.44	264	4201m	0.40	ng/ul	-0.01

System Monitoring Compounds	R.T.	QIon	Response	Conc	Units	Dev(Min)
4) 2-Methylnaphthalene-d10	12.01	152	891	0.14	ng/ul	0.00
14) Fluoranthene-d10	19.06	212	2436m	0.17	ng/ul	-0.02

Target Compounds	R.T.	QIon	Response	Conc	Units	Ovalue
3) Naphthalene	10.44	128	339	0.032	ng/ul#	62
5) 2-Methylnaphthalene	12.09	142	172	0.024	ng/ul	97
7) Acenaphthylene	14.00	152	1043	0.112	ng/ul#	66
8) Acenaphthene	14.33	153	239	0.031	ng/ul#	92
9) Fluorene	15.33	166	327	0.039	ng/ul#	93
12) Phenanthrene	17.07	178	7154	0.564	ng/ul	98
13) Anthracene	17.16	178	1753m	0.162	ng/ul	
15) Fluoranthene	19.09	202	22208m	1.306	ng/ul	
17) Pyrene	19.46	202	21283	1.230	ng/ul	96
18) Benzo(a)anthracene	21.21	228	10692	0.710	ng/ul	99
19) Chrysene	21.27	228	13849	0.715	ng/ul	99
21) Benzo(b)fluoranthene	22.78	252	19547m	1.380	ng/ul	
22) Benzo(k)fluoranthene	22.82	252	5808m	0.362	ng/ul	
23) Benzo(a)pyrene	23.34	252	11942m	0.829	ng/ul	
24) Indeno(1,2,3-cd)pyrene	25.65	276	8962m	0.521	ng/ul	
25) Dibenzo(a,h)anthracene	25.66	278	2261m	0.163	ng/ul	
26) Benzo(a,h,i)perylene	26.34	276	7513m	0.485	ng/ul	

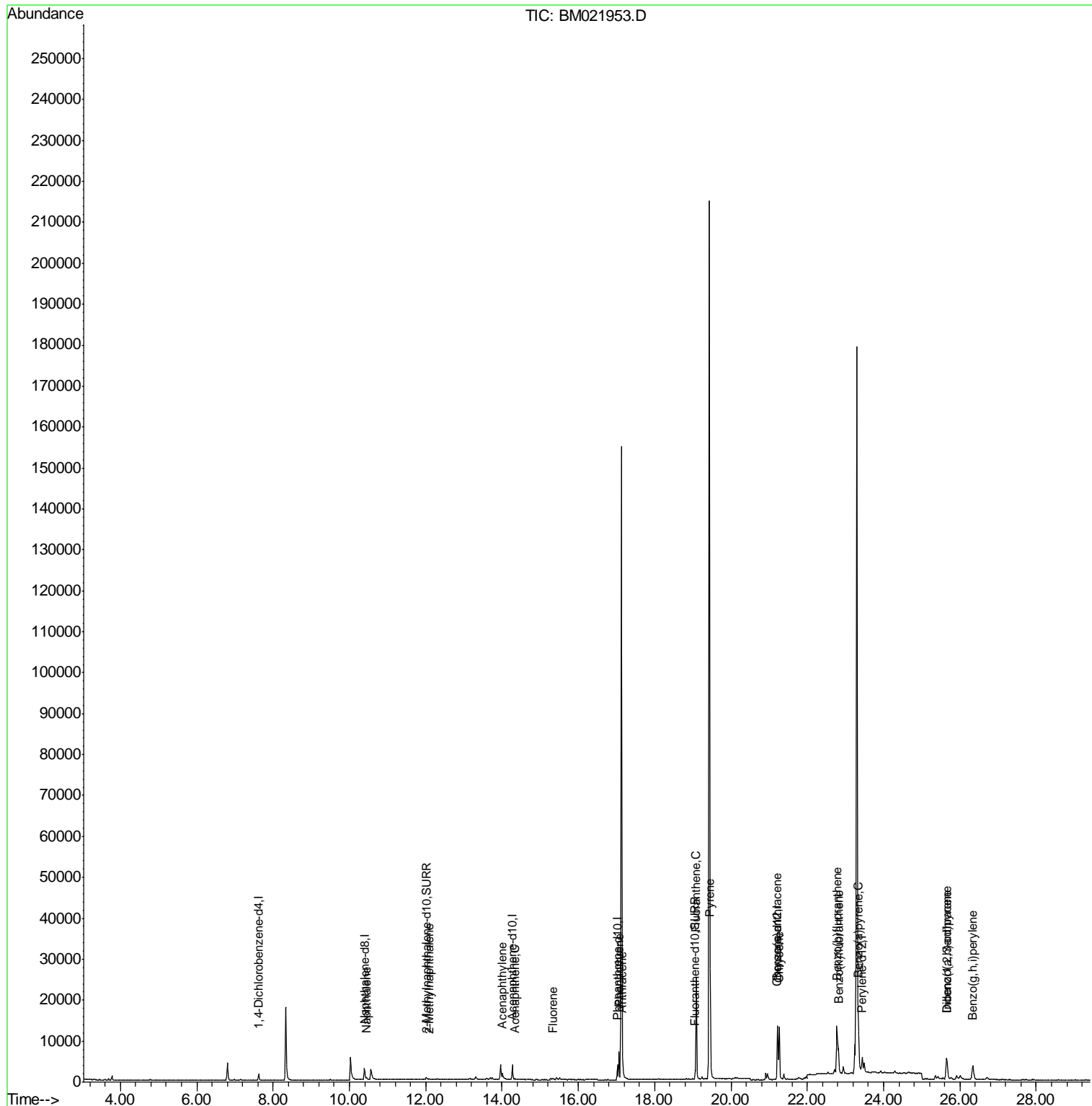
(#) = qualifier out of range (m) = manual integration (+) = signals summed

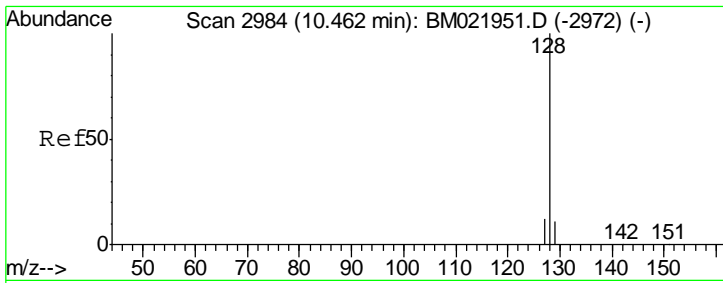
Data Path : Z:\SVOASRV\HPCHEM1\BNA M\DATA\BM080719\
 Data File : BM021953.D
 Acq On : 09 Aug 2019 04:27
 Operator : HP/JU
 Sample : K4029-11
 Misc :
 ALS Vial : 15 Sample Multiplier: 1

Instrument :
 BNA_M
Client Sampled :
 BENY1

Manual Integrations
APPROVED
 Sohil
 8/13/2019 8:29:53 AM

Quant Time: Aug 09 06:05:24 2019
 Quant Method : Z:\SVOASRV\HPCHEM1\BNA M\METHODS\SOM-EPA-SIM-BM080319.M
 Quant Title : ASP BNA STANDARDS FOR 5 POINT CALIBRATION
 QLast Update : Fri Aug 09 01:29:50 2019
 Response via : Initial Calibration





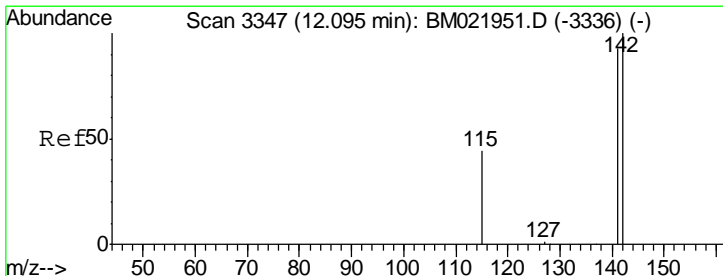
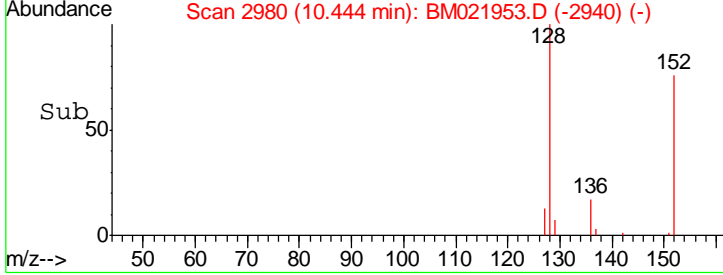
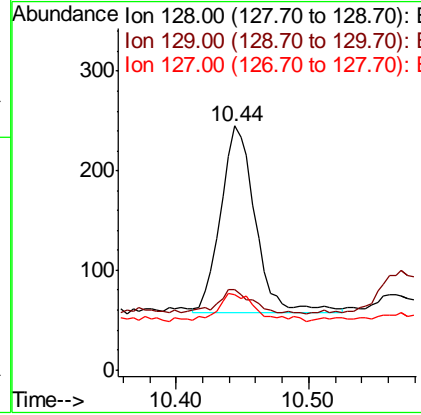
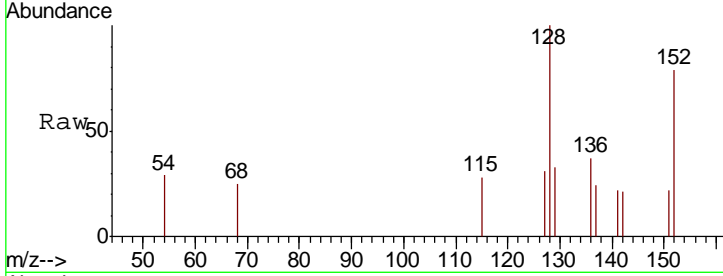
#3
 Naphthalene
 Concen: 0.032 ng/ul
 RT: 10.44 min Scan# 2980
 Delta R.T. -0.02 min
 Lab File: BM021953.D
 Acq: 09 Aug 2019 04:27

Instrument :
 BNA_M
ClientSampled :
 BENY1

Tgt Ion	Ratio	Lower	Upper
128	100		
129	33.1	12.3	18.5#
127	30.6	13.0	19.6#

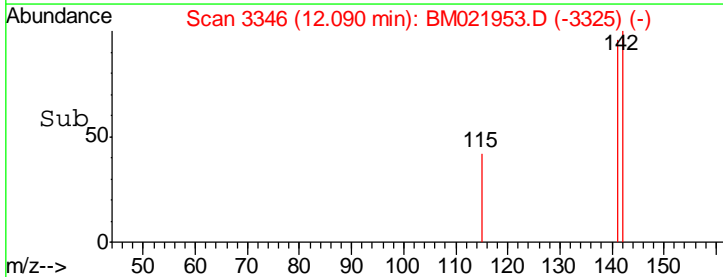
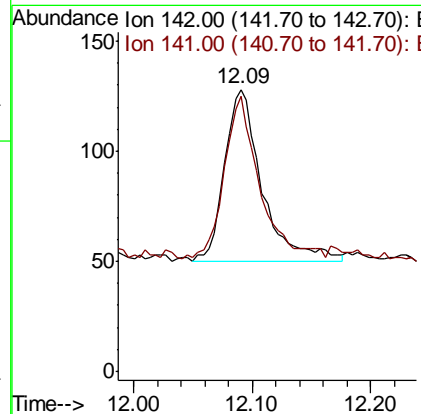
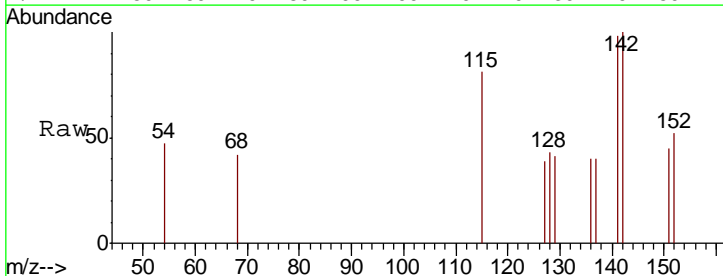
Manual Integrations
APPROVED

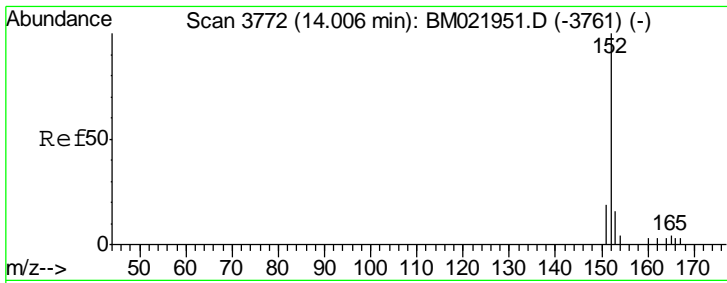
Sohil
 8/13/2019 8:29:53 AM



#5
 2-Methylnaphthalene
 Concen: 0.024 ng/ul
 RT: 12.09 min Scan# 3346
 Delta R.T. -0.01 min
 Lab File: BM021953.D
 Acq: 09 Aug 2019 04:27

Tgt Ion	Ratio	Lower	Upper
142	100		
141	90.1	74.3	111.5





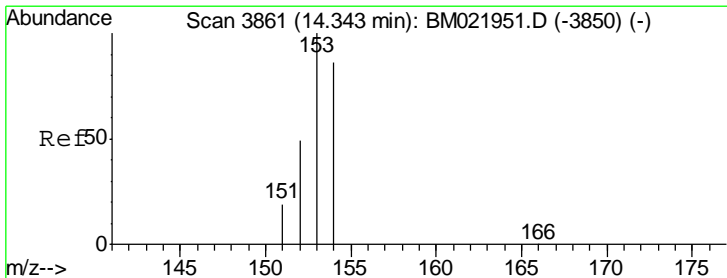
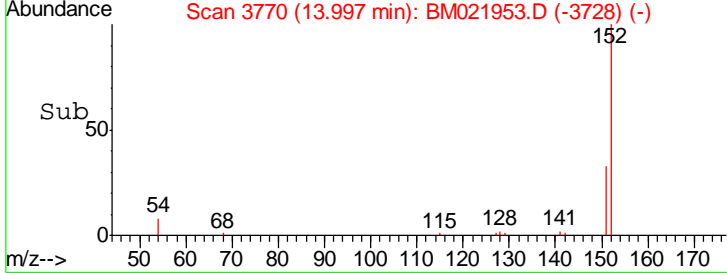
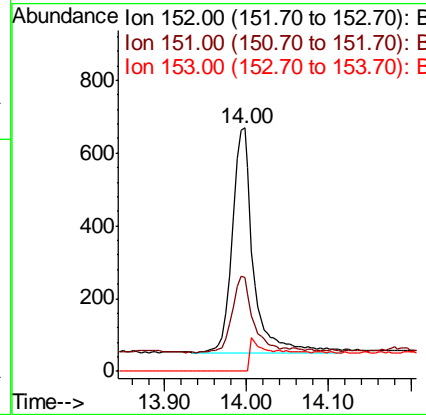
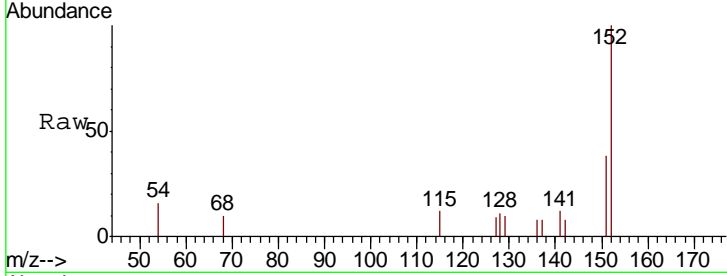
#7
 Acenaphthylene
 Concen: 0.112 ng/ul
 RT: 14.00 min Scan# 3770
 Delta R.T. -0.01 min
 Lab File: BM021953.D
 Acq: 09 Aug 2019 04:27

Instrument :
 BNA_M
ClientSampled :
 BENY1

Tgt Ion	Resp	Lower	Upper
152	1043		
151	38.4	18.3	27.5#
153	0.0	12.8	19.2#

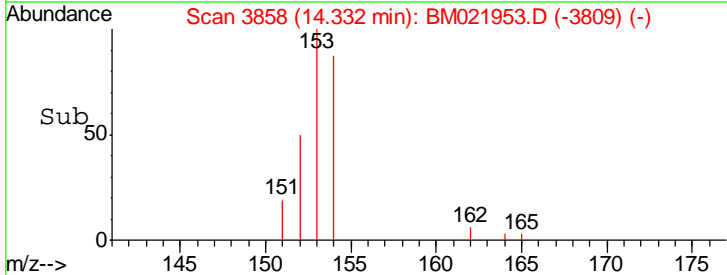
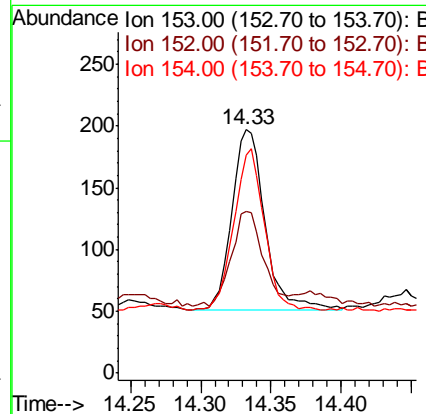
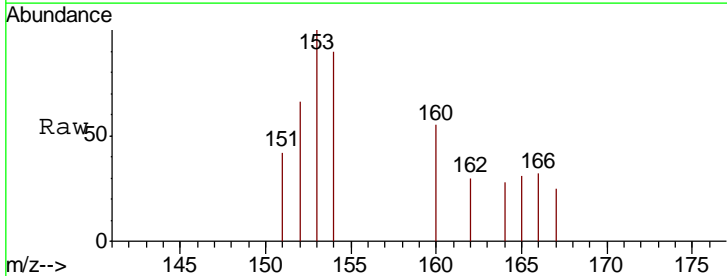
Manual Integrations
APPROVED

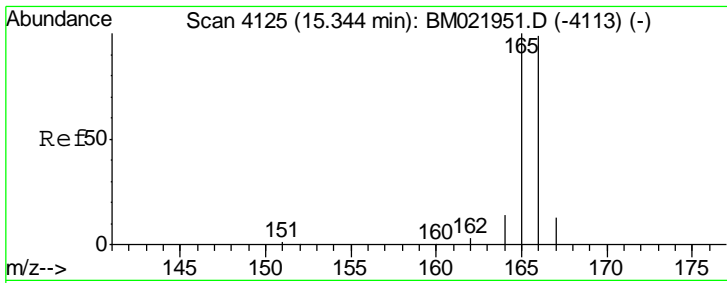
Sohil
 8/13/2019 8:29:53 AM



#8
 Acenaphthene
 Concen: 0.031 ng/ul
 RT: 14.33 min Scan# 3858
 Delta R.T. -0.01 min
 Lab File: BM021953.D
 Acq: 09 Aug 2019 04:27

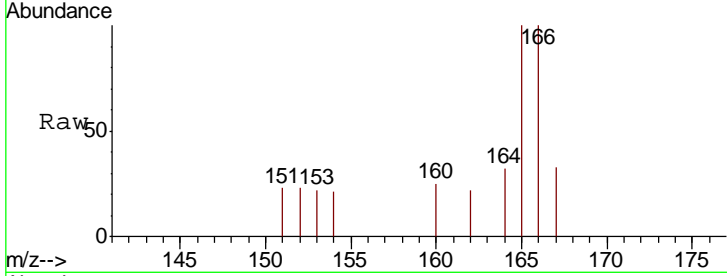
Tgt Ion	Resp	Lower	Upper
153	239		
152	66.5	41.3	61.9#
154	89.8	72.3	108.5





#9
 Fluorene
 Concen: 0.039 ng/ul
 RT: 15.33 min Scan# 4121
 Delta R.T. -0.02 min
 Lab File: BM021953.D
 Acq: 09 Aug 2019 04:27

Instrument :
 BNA_M
 ClientSampled :
 BENY1

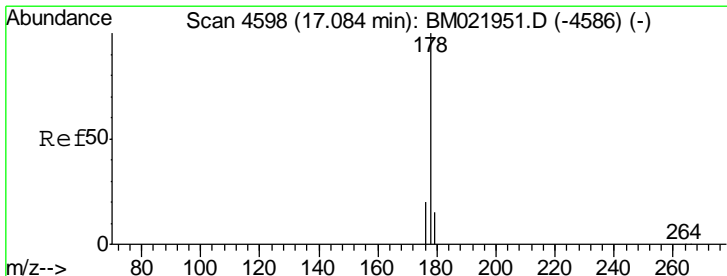
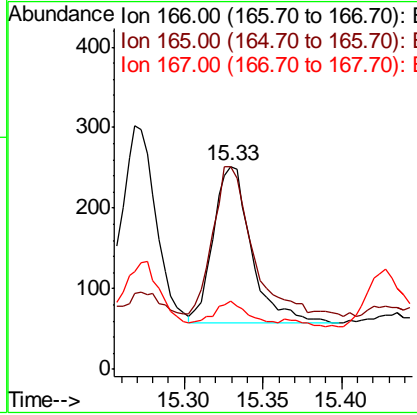
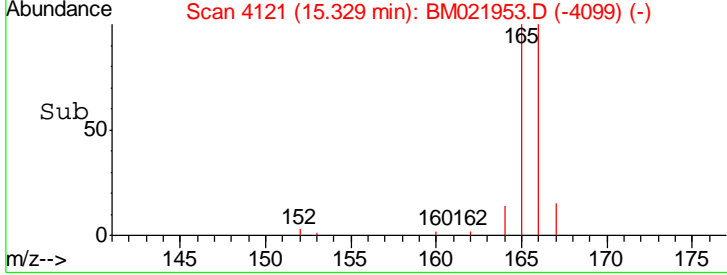


Tgt Ion: 166 Resp: 327

Ion	Ratio	Lower	Upper
166	100		
165	99.6	81.4	122.0
167	33.3	13.7	20.5

Manual Integrations
 APPROVED

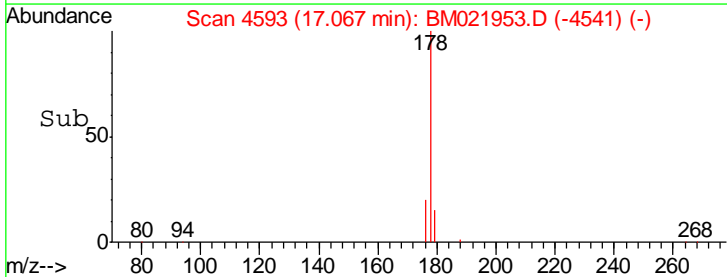
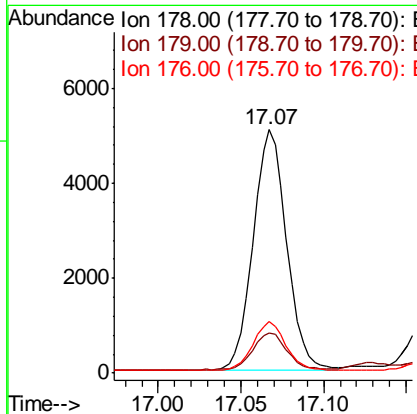
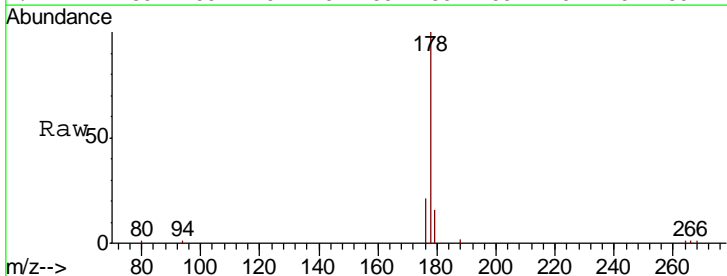
Sohil
 8/13/2019 8:29:53 AM

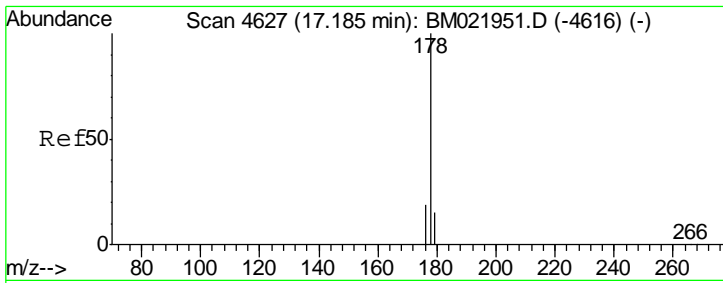


#12
 Phenanthrene
 Concen: 0.564 ng/ul
 RT: 17.07 min Scan# 4593
 Delta R.T. -0.02 min
 Lab File: BM021953.D
 Acq: 09 Aug 2019 04:27

Tgt Ion: 178 Resp: 7154

Ion	Ratio	Lower	Upper
178	100		
179	16.2	14.2	21.2
176	21.0	16.8	25.2





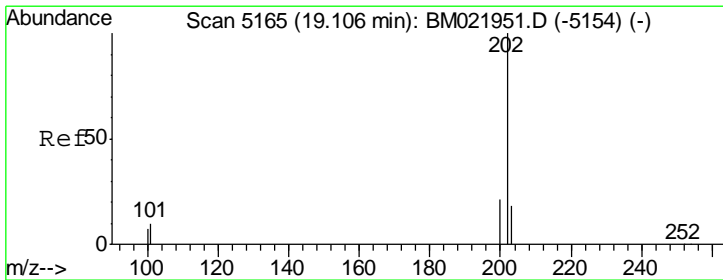
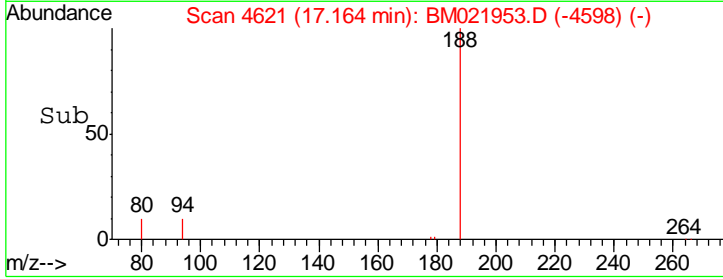
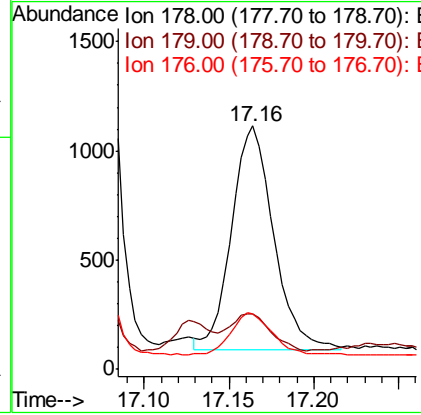
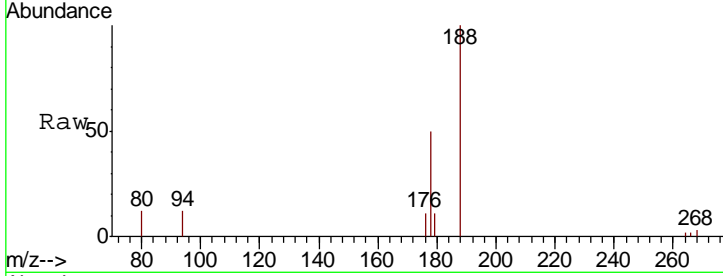
#13
 Anthracene
 Concen: 0.162 ng/ul m
 RT: 17.16 min Scan# 4621
 Delta R.T. -0.02 min
 Lab File: BM021953.D
 Acq: 09 Aug 2019 04:27

Instrument :
 BNA_M
 ClientSampled :
 BENY1

Tgt Ion	Resp	Lower	Upper
178	1753		
179	22.7	15.5	23.3
176	22.6	16.6	25.0

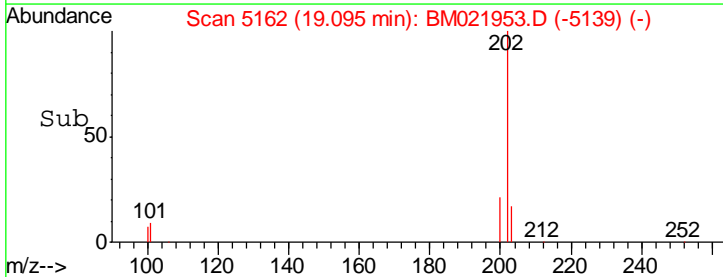
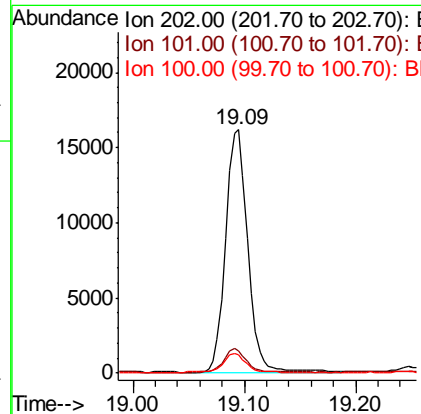
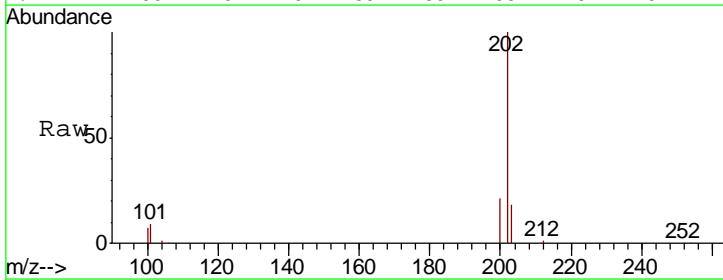
Manual Integrations
 APPROVED

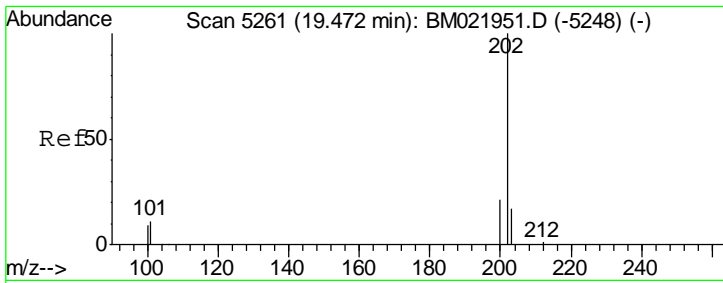
Sohil
 8/13/2019 8:29:53 AM



#15
 Fluoranthene
 Concen: 1.306 ng/ul m
 RT: 19.09 min Scan# 5162
 Delta R.T. -0.01 min
 Lab File: BM021953.D
 Acq: 09 Aug 2019 04:27

Tgt Ion	Resp	Lower	Upper
202	22208		
101	9.4	0.0	30.2
100	7.5	0.0	28.1





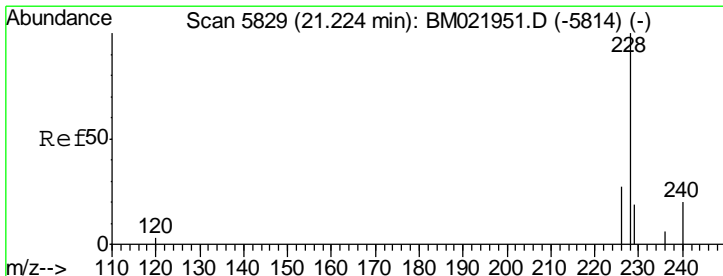
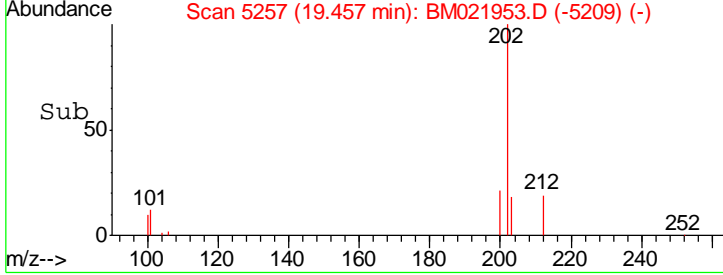
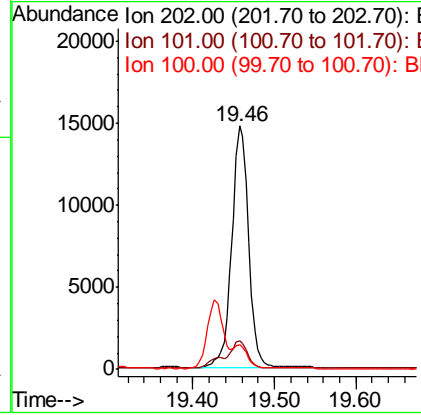
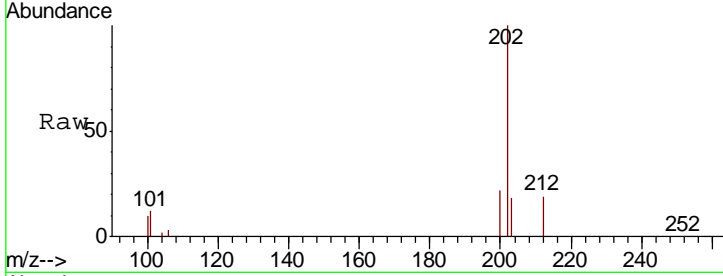
#17
 Pyrene
 Concen: 1.230 ng/ul
 RT: 19.46 min Scan# 5257
 Delta R.T. -0.02 min
 Lab File: BM021953.D
 Acq: 09 Aug 2019 04:27

Instrument :
 BNA_M
 ClientSampled :
 BENY1

Tgt Ion	Ratio	Lower	Upper
202	100		
101	11.9	8.3	12.5
100	10.2	7.2	10.8

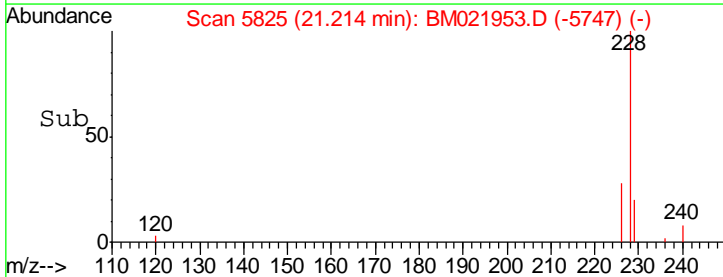
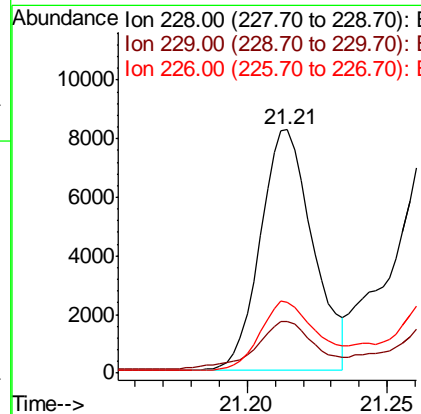
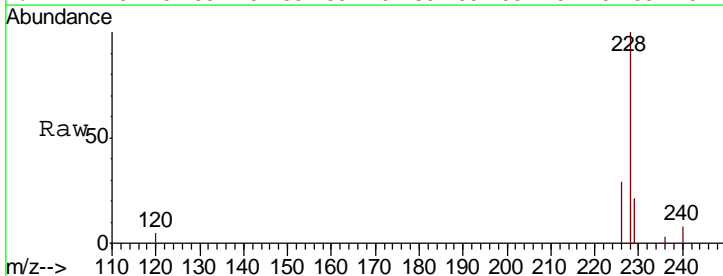
Manual Integrations
 APPROVED

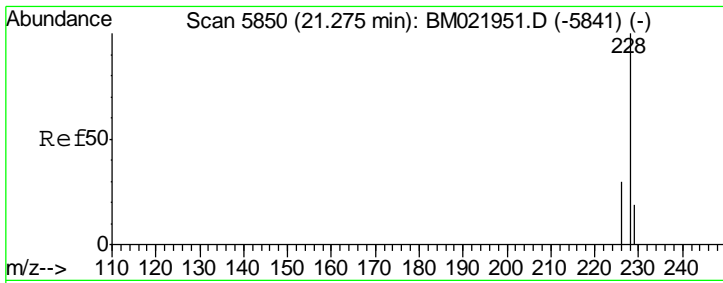
Sohil
 8/13/2019 8:29:53 AM



#18
 Benzo(a)anthracene
 Concen: 0.710 ng/ul
 RT: 21.21 min Scan# 5825
 Delta R.T. -0.01 min
 Lab File: BM021953.D
 Acq: 09 Aug 2019 04:27

Tgt Ion	Ratio	Lower	Upper
228	100		
229	21.1	17.2	25.8
226	29.0	22.6	34.0



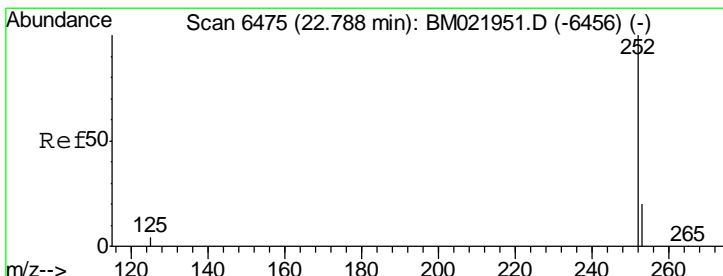
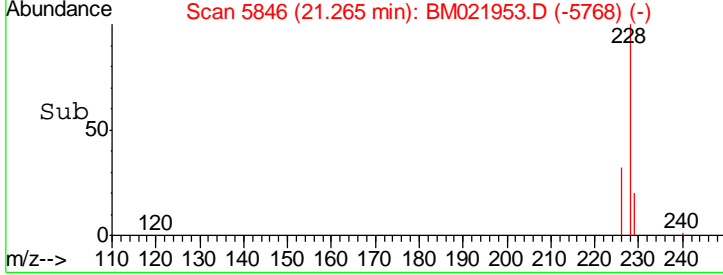
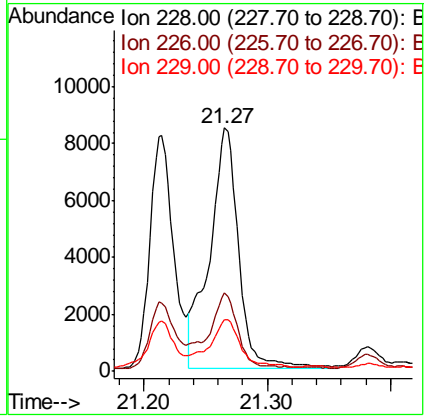
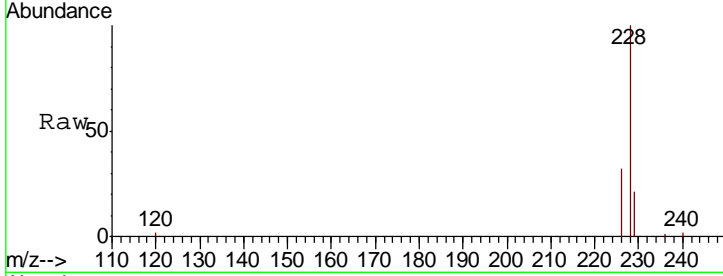


#19
 Chrysene
 Concen: 0.715 ng/ul
 RT: 21.27 min Scan# 5846
 Delta R.T. -0.01 min
 Lab File: BM021953.D
 Acq: 09 Aug 2019 04:27

Instrument :
 BNA_M
 ClientSampled :
 BENY1

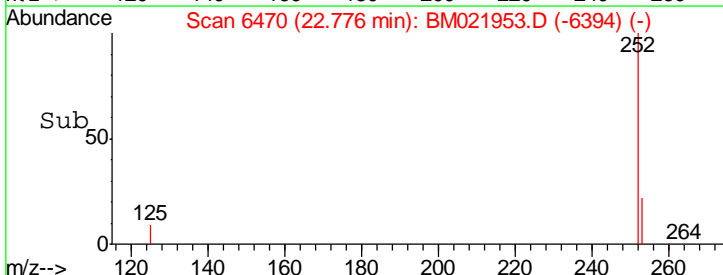
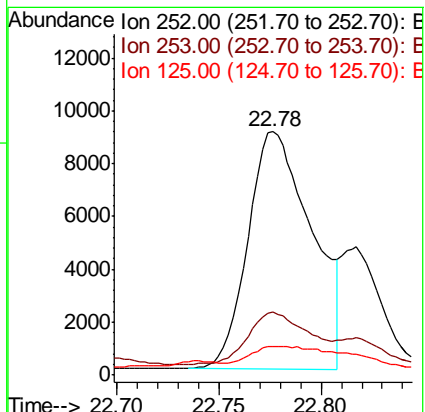
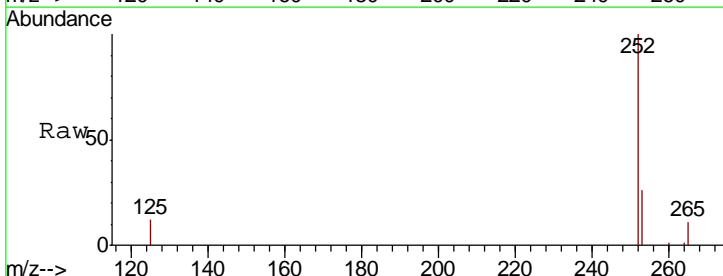
Tgt Ion	Resp	Lower	Upper
228	13849		
226	32.3	24.9	37.3
229	21.0	16.6	25.0

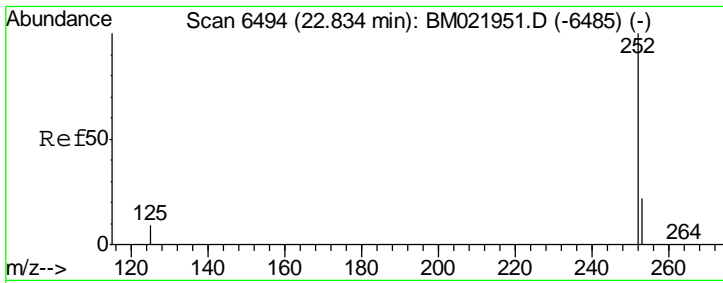
Manual Integrations
APPROVED
 Sohil
 8/13/2019 8:29:53 AM



#21
 Benzo(b)fluoranthene
 Concen: 1.380 ng/ul m
 RT: 22.78 min Scan# 6470
 Delta R.T. -0.01 min
 Lab File: BM021953.D
 Acq: 09 Aug 2019 04:27

Tgt Ion	Resp	Lower	Upper
252	19547		
253	25.8	0.0	67.4
125	11.9	0.0	31.0





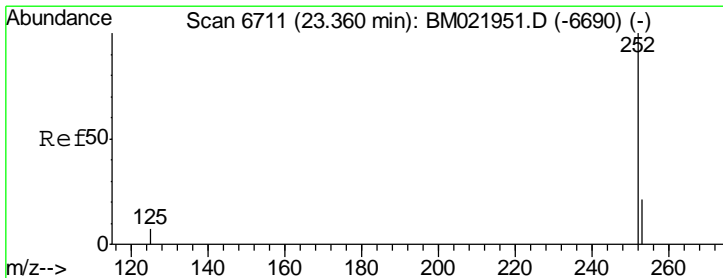
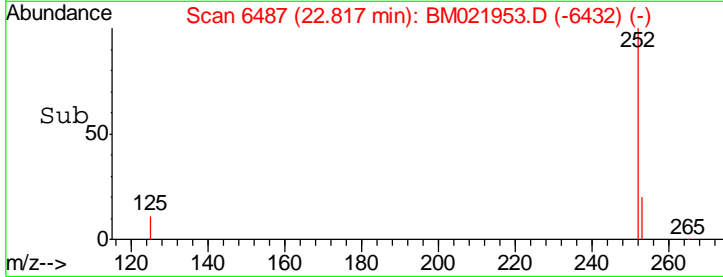
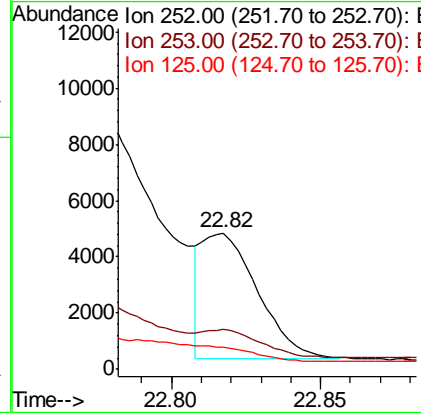
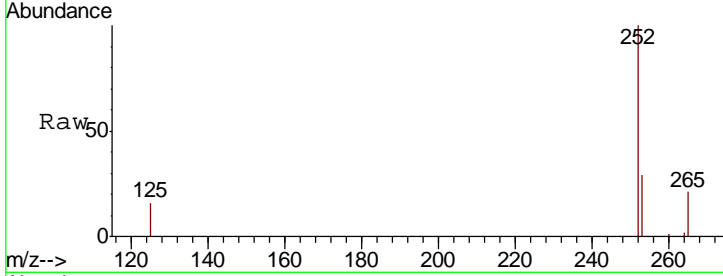
#22
 Benzo(k)fluoranthene
 Concen: 0.362 ng/ul m
 RT: 22.82 min Scan# 6487
 Delta R.T. -0.02 min
 Lab File: BM021953.D
 Acq: 09 Aug 2019 04:27

Instrument :
 BNA_M
 ClientSampled :
 BENY1

Tgt Ion	Resp	Lower	Upper
252	100		
253	29.3	27.0	40.4
125	16.2	12.2	18.2

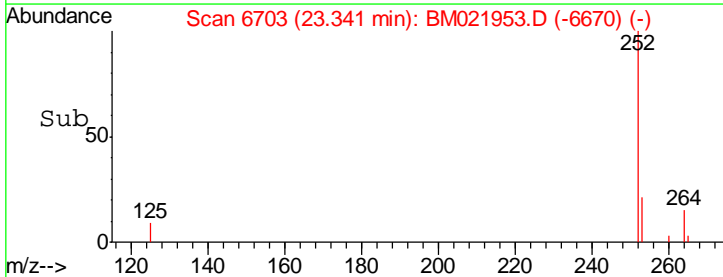
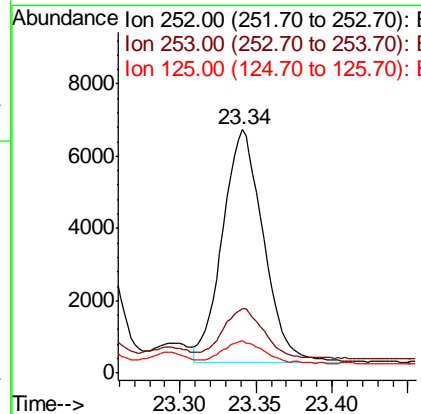
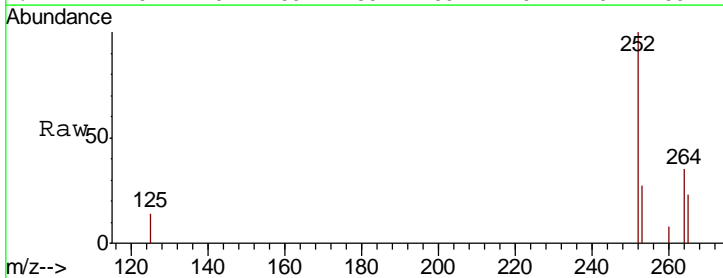
Manual Integrations
 APPROVED

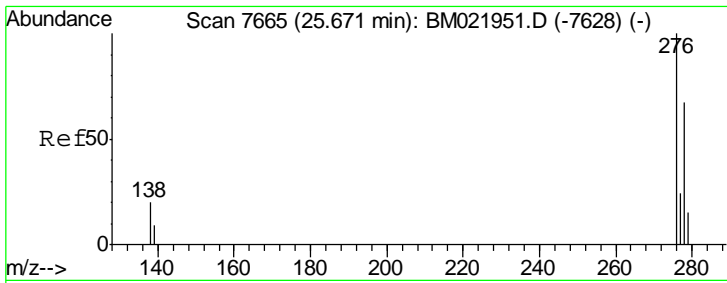
Sohil
 8/13/2019 8:29:53 AM



#23
 Benzo(a)pyrene
 Concen: 0.829 ng/ul m
 RT: 23.34 min Scan# 6703
 Delta R.T. -0.02 min
 Lab File: BM021953.D
 Acq: 09 Aug 2019 04:27

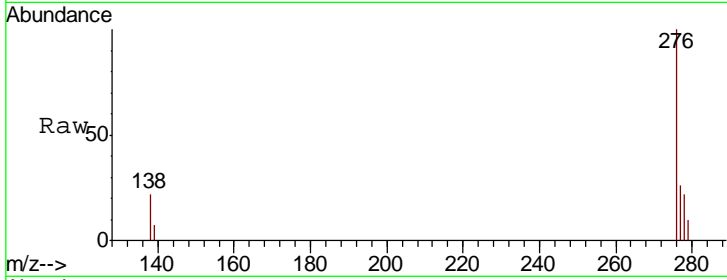
Tgt Ion	Resp	Lower	Upper
252	100		
253	26.6	31.7	47.5#
125	13.6	14.6	21.8#





#24
 Indeno(1,2,3-cd)pyrene
 Concen: 0.521 ng/ul m
 RT: 25.65 min Scan# 7657
 Delta R.T. -0.02 min
 Lab File: BM021953.D
 Acq: 09 Aug 2019 04:27

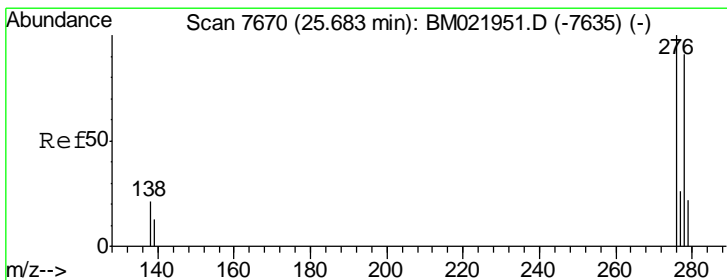
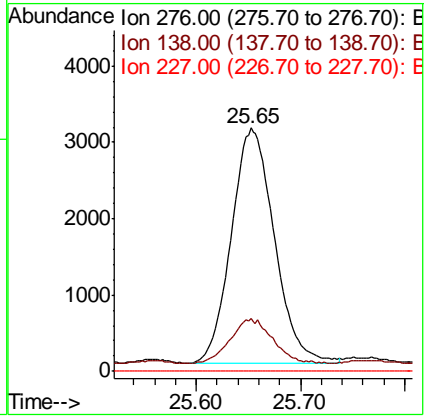
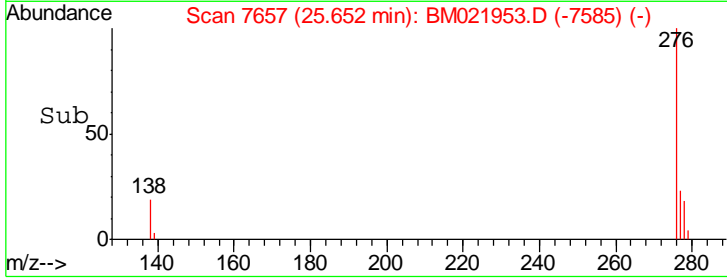
Instrument :
 BNA_M
ClientSampled :
 BENY1



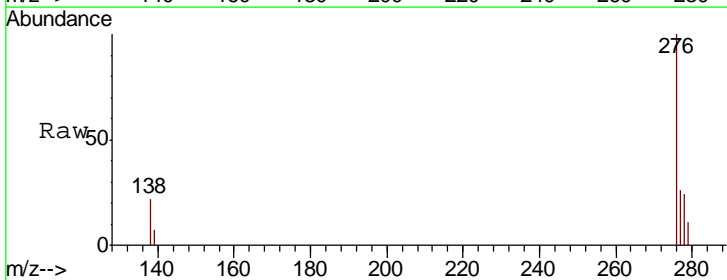
Tgt Ion: 276 Resp: 8962

Ion	Ratio	Lower	Upper
276	100		
138	1.6	15.1	22.7#
227	0.0	0.0	0.0

Manual Integrations
APPROVED
 Sohil
 8/13/2019 8:29:53 AM

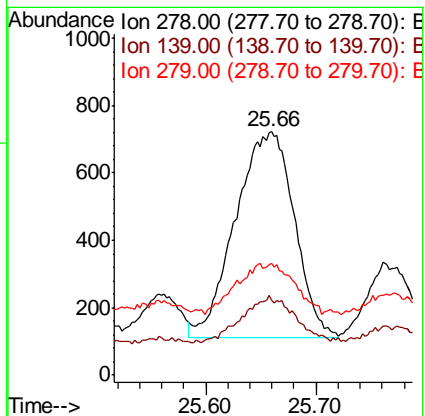
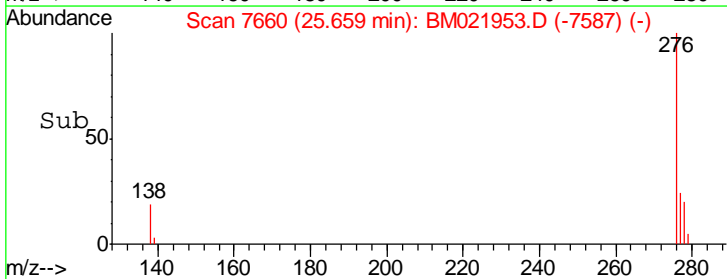


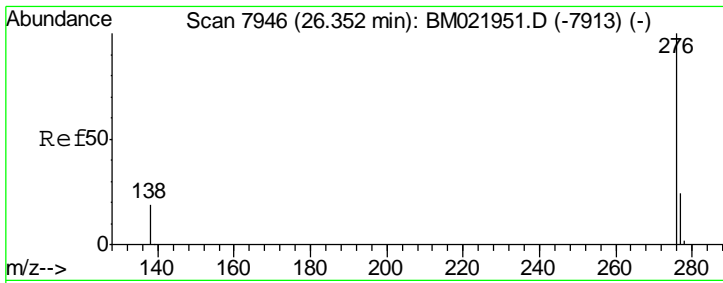
#25
 Dibenzo(a,h)anthracene
 Concen: 0.163 ng/ul m
 RT: 25.66 min Scan# 7660
 Delta R.T. -0.02 min
 Lab File: BM021953.D
 Acq: 09 Aug 2019 04:27



Tgt Ion: 278 Resp: 2261

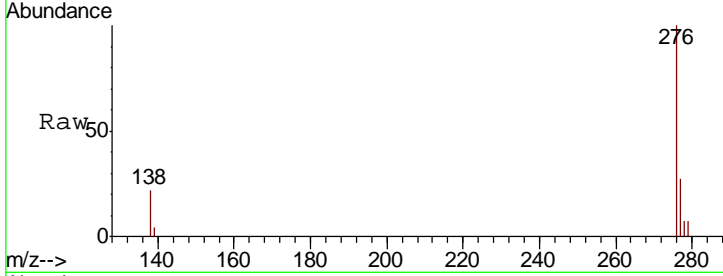
Ion	Ratio	Lower	Upper
278	100		
139	30.8	14.2	21.2#
279	45.9	28.3	42.5#





#26
 Benzo(a,h,i)perylene
 Concen: 0.485 ng/ul m
 RT: 26.34 min Scan# 7939
 Delta R.T. -0.02 min
 Lab File: BM021953.D
 Acq: 09 Aug 2019 04:27

Instrument :
 BNA_M
ClientSampled :
 BENY1



Tot Ion: 276 Resp: 7513

Ion	Ratio	Lower	Upper
276	100		
138	21.8	15.5	23.3
277	26.5	21.4	32.2

Manual Integrations
APPROVED
 Sohil
 8/13/2019 8:29:53 AM

