

Data Path : Z:\svoasrv\HPCHEM1\BNA_M\Data\BM010224\
 Data File : BM043738.D
 Acq On : 03 Jan 2024 18:08
 Operator : MA/JU
 Sample : 05952-18DL 10X
 Misc :
 ALS Vial : 6 Sample Multiplier: 1

Instrument :
 BNA_M
 ClientSampleId :
 GCFA1DL

Quant Time: Jan 03 21:54:22 2024
 Quant Method : Z:\svoasrv\HPCHEM1\BNA_M\Methods\SFAM-EPA-BM121523.MA.M
 Quant Title : SVOA CALIBRATION
 QLast Update : Fri Dec 29 22:31:57 2023
 Response via : Initial Calibration

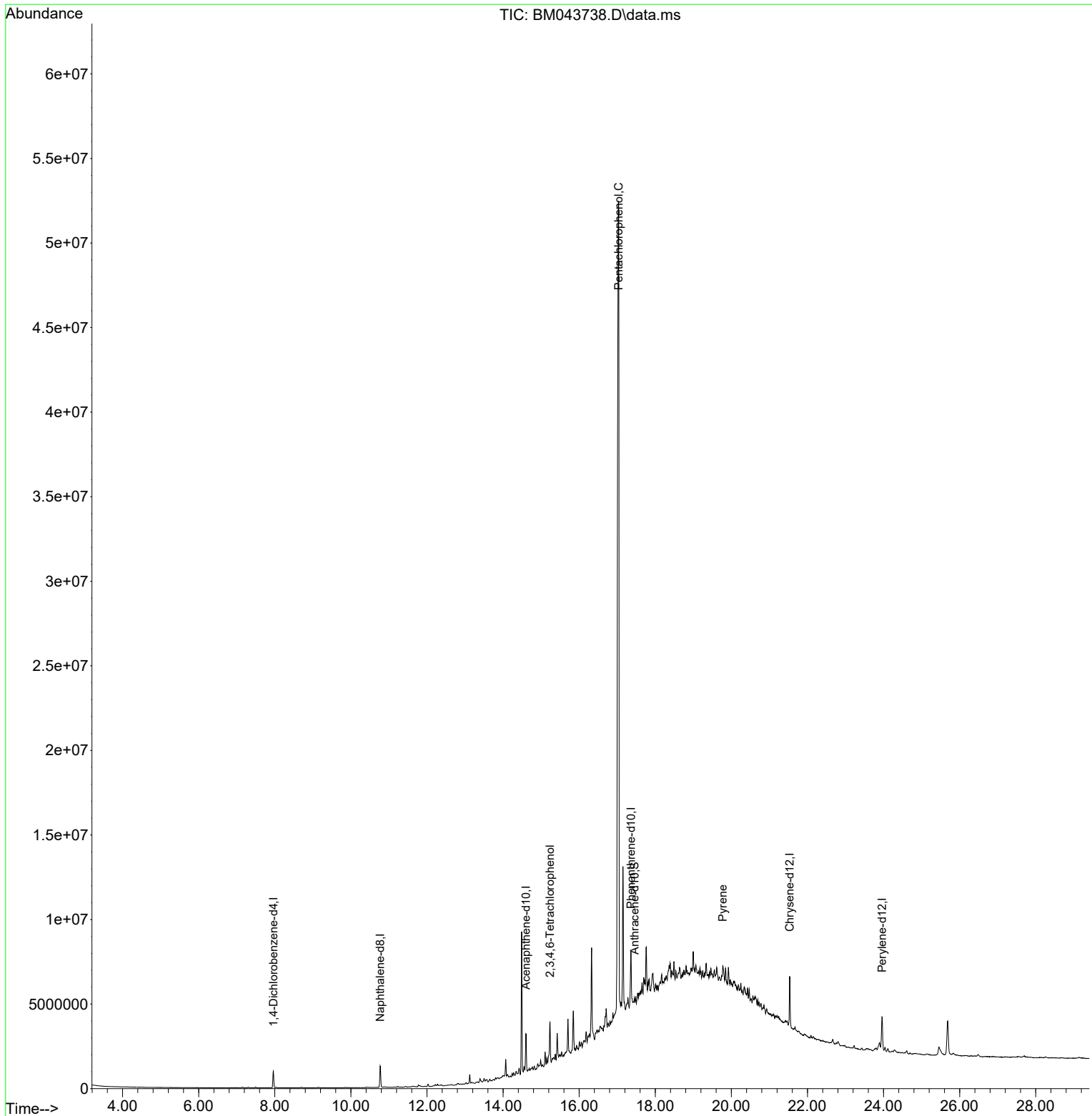
Compound	R.T.	QIon	Response	Conc	Units	Dev(Min)
Internal Standards						
1) 1,4-Dichlorobenzene-d4	7.963	152	272534	20.000	ng/ul	0.00
20) Naphthalene-d8	10.769	136	1096845	20.000	ng/ul	0.00
38) Acenaphthene-d10	14.604	164	743072	20.000	ng/ul	0.01
64) Phenanthrene-d10	17.363	188	1548306	20.000	ng/ul	0.02
79) Chrysene-d12	21.533	240	1296560	20.000	ng/ul	0.01
88) Perylene-d12	23.962	264	1457393	20.000	ng/ul	0.03
System Monitoring Compounds						
3) 1,4-Dioxane-d8	3.369	96	2017	0.241	ng/uL	0.00
4) Pyridine-d5	3.787	84	875	0.036	ng/ul	0.00
7) Phenol-d5	7.146	99	23613	0.762	ng/ul	0.03
9) Bis-(2-Chloroethyl)eth...	7.304	67	14776	0.753	ng/ul	0.00
11) 2-Chlorophenol-d4	7.498	132	19709	0.833	ng/ul	0.01
15) 4-Methylphenol-d8	8.698	113	16272	0.676	ng/ul	0.03
21) Nitrobenzene-d5	9.140	128	9517	0.897	ng/ul	0.01
24) 2-Nitrophenol-d4	9.857	143	9354	0.853	ng/ul	0.00
28) 2,4-Dichlorophenol-d3	10.416	165	15594	0.806	ng/ul	0.04
31) 4-Chloroaniline-d4	10.939	131	1820	0.064	ng/ul	0.03
46) Dimethylphthalate-d6	14.022	166	59199	0.885	ng/ul	0.00
49) Acenaphthylene-d8	14.298	160	78602	0.991	ng/ul	0.01
54) 4-Nitrophenol-d4	14.810	143	2601	0.205	ng/ul	0.02
60) Fluorene-d10	15.592	176	54960	0.994	ng/ul	0.00
65) 4,6-Dinitro-2-methylph...	15.745	200	8349	0.815	ng/ul	0.04
73) Anthracene-d10	17.457	188	87354	1.006	ng/ul	0.02
81) Pyrene-d10	19.745	212	91903	0.898	ng/ul	0.02
92) Benzo(a)pyrene-d12	23.797	264	81747	0.909	ng/ul	0.02
Target Compounds						
58) 2,3,4,6-Tetrachlorophenol	15.233	232	428554	32.734	ng/ul#	90
71) Pentachlorophenol	17.033	266	18348232	1444.210	ng/ul	97
82) Pyrene	19.774	202	470397	3.610	ng/ul	99

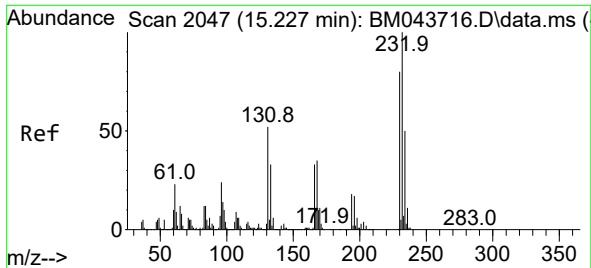
(#) = qualifier out of range (m) = manual integration (+) = signals summed

Data Path : Z:\svoasrv\HPCHEM1\BNA_M\Data\BM010224\
 Data File : BM043738.D
 Acq On : 03 Jan 2024 18:08
 Operator : MA/JU
 Sample : 05952-18DL 10X
 Misc :
 ALS Vial : 6 Sample Multiplier: 1

Instrument :
 BNA_M
 ClientSampleId :
 GCFA1DL

Quant Time: Jan 03 21:54:22 2024
 Quant Method : Z:\svoasrv\HPCHEM1\BNA_M\Methods\SFAM-EPA-BM121523.MA.M
 Quant Title : SVOA CALIBRATION
 QLast Update : Fri Dec 29 22:31:57 2023
 Response via : Initial Calibration



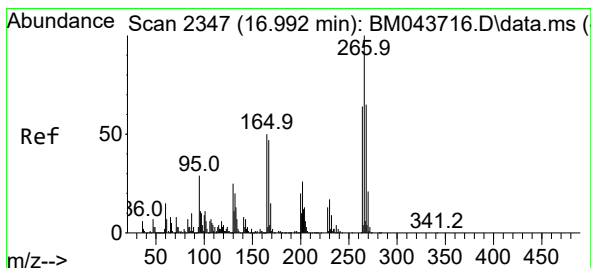
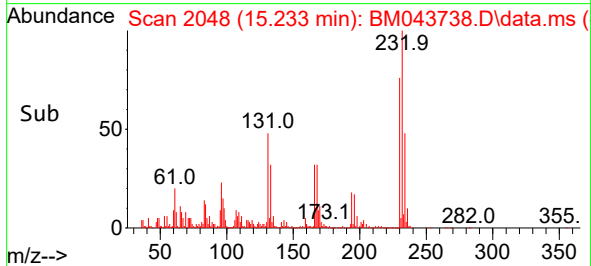
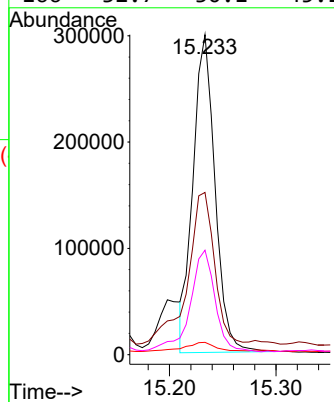
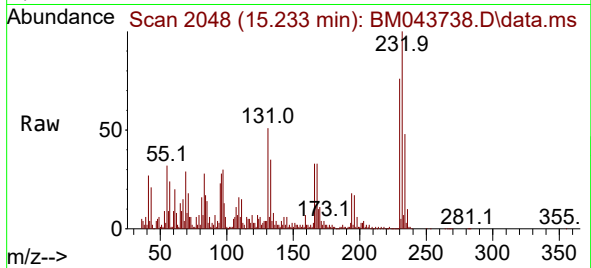


#58
 2,3,4,6-Tetrachlorophenol
 Concen: 32.734 ng/ul
 RT: 15.233 min Scan# 2048
 Delta R.T. 0.018 min
 Lab File: BM043738.D
 Acq: 03 Jan 2024 18:08

Instrument :
 BNA_M
 ClientSampleId :
 GCFA1DL

Tgt Ion:232 Resp: 428554

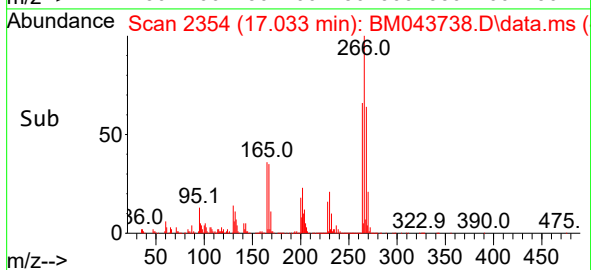
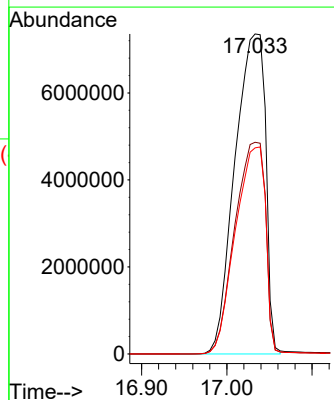
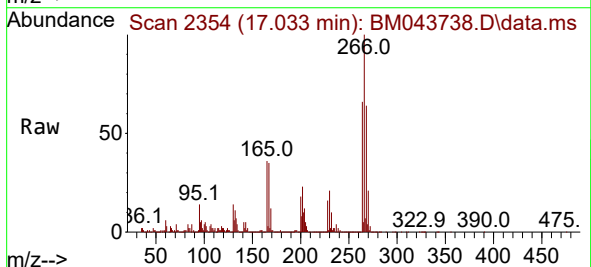
Ion	Ratio	Lower	Upper
232	100		
131	50.7	47.4	71.0
130	3.9	2.4	3.6#
166	32.7	30.1	45.1

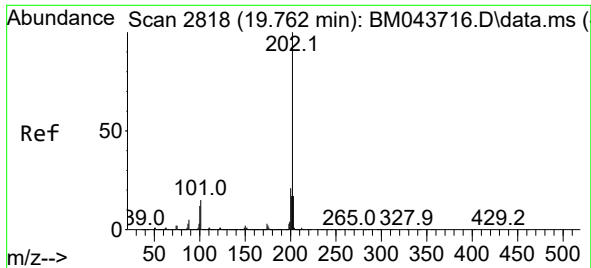


#71
 Pentachlorophenol
 Concen: 1444.210 ng/ul
 RT: 17.033 min Scan# 2354
 Delta R.T. 0.053 min
 Lab File: BM043738.D
 Acq: 03 Jan 2024 18:08

Tgt Ion:266 Resp:18348232

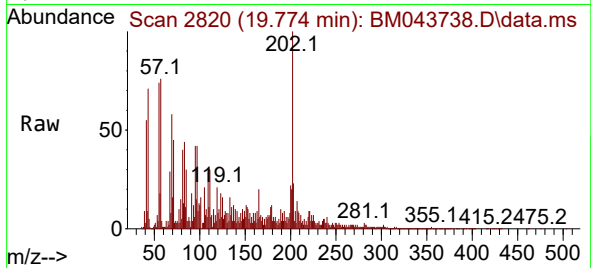
Ion	Ratio	Lower	Upper
266	100		
264	66.2	49.9	74.9
268	64.4	51.0	76.6





#82
 Pyrene
 Concen: 3.610 ng/ul
 RT: 19.774 min Scan# 21
 Delta R.T. 0.018 min
 Lab File: BM043738.D
 Acq: 03 Jan 2024 18:08

Instrument :
 BNA_M
 ClientSampleId :
 GCFA1DL



Tgt Ion: 202 Resp: 470397

Ion	Ratio	Lower	Upper
202	100		
101	15.6	12.7	19.1
100	11.7	10.1	15.1

