

Data Path : Z:\HPCHEM1\BNA\_M\Data\BM010915\  
 Data File : BM000155.D  
 Acq On : 09 Jan 2015 11:58  
 Operator : TP/IZ  
 Sample : SSTD0.424  
 Misc :  
 ALS Vial : 4 Sample Multiplier: 1

Quant Time: Jan 09 22:07:52 2015

Quant Method : Z:\HPCHEM1\BNA\_M\METHODS\SOM02.2-EPA-SIM-BM010715.M

Quant Title : ASP BNA STANDARDS FOR 5 POINT CALIBRATION

QLast Update : Thu Jan 08 10:41:47 2015

Response via : Initial Calibration

Internal Standards	R.T.	QIon	Response	Conc	Units	Dev(Min)
1) 1,4-Dichlorobenzene-d4	7.84	152	3480	0.40	ng/ul	0.00
2) Naphthalene-d8	10.62	136	11020	0.40	ng/ul	-0.01
6) Acenaphthene-d10	14.47	164	6483	0.40	ng/ul	0.00
10) Phenanthrene-d10	17.21	188	12148	0.40	ng/ul	0.00
16) Chrysene-d12	21.40	240	10672	0.40	ng/ul	-0.01
20) Perylene-d12	23.69	264	9771	0.40	ng/ul	-0.01

#### System Monitoring Compounds

4) 2-Methylnaphthalene-d10	12.21	152	5773	0.39	ng/ul	-0.01
14) Fluoranthene-d10	19.24	212	10598	0.40	ng/ul	-0.01

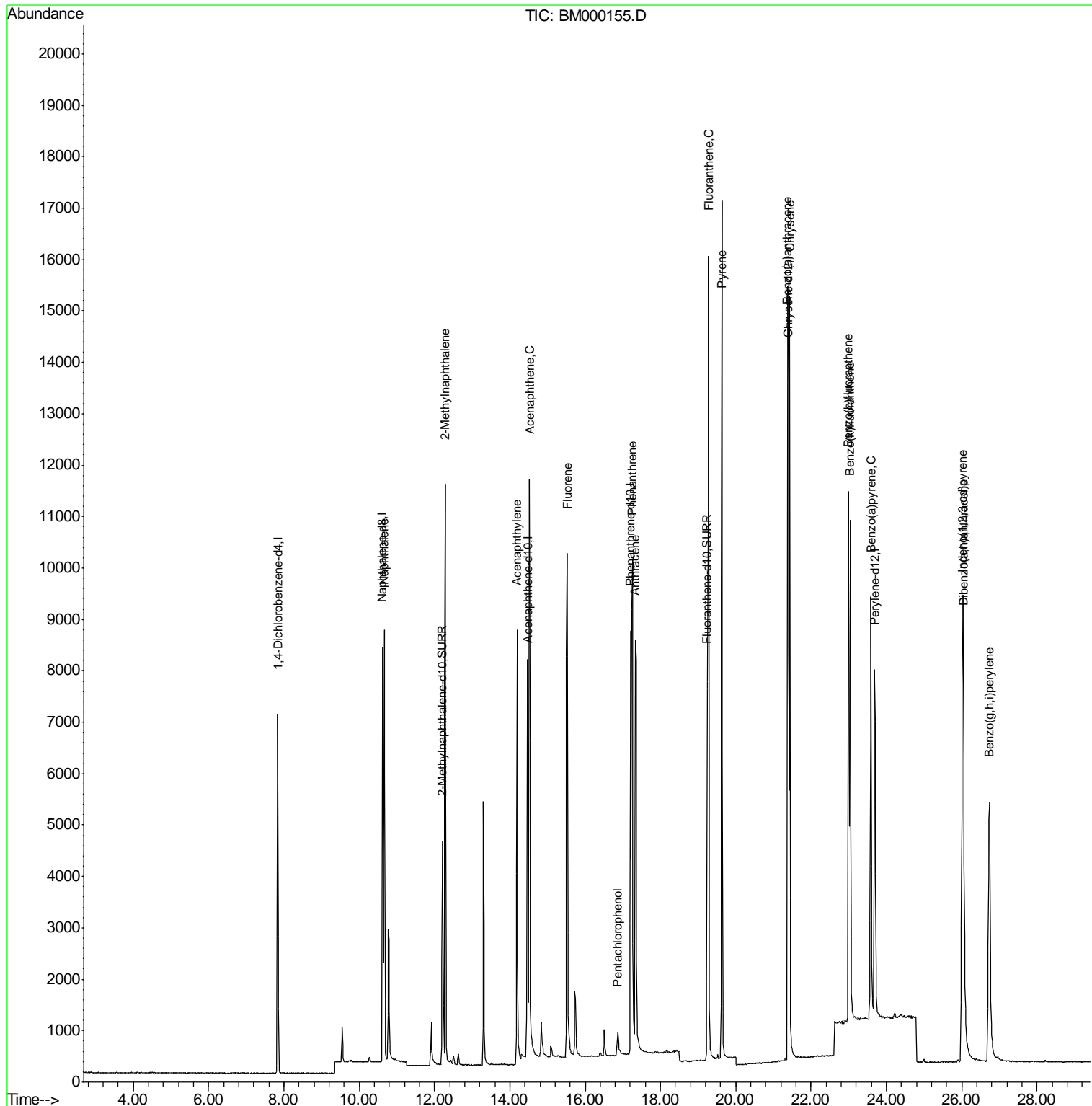
#### Target Compounds

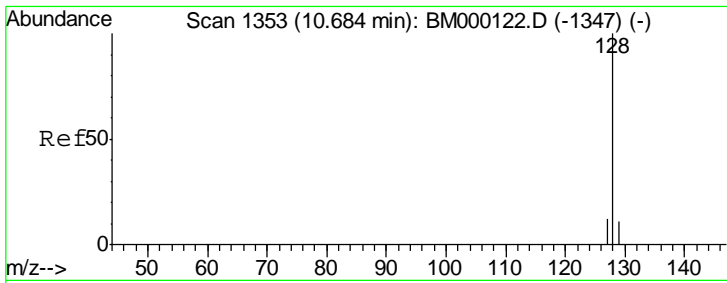
						Qvalue
3) Naphthalene	10.67	128	11656	0.39	ng/ul	98
5) 2-Methylnaphthalene	12.28	142	7848	0.40	ng/ul	99
7) Acenaphthylene	14.19	152	12963	0.40	ng/ul	98
8) Acenaphthene	14.52	153	8043	0.40	ng/ul	86
9) Fluorene	15.52	166	9237	0.40	ng/ul	93
11) Pentachlorophenol	16.87	266	605	0.32	ng/ul	95
12) Phenanthrene	17.26	178	14350	0.38	ng/ul	98
13) Anthracene	17.33	178	13852	0.39	ng/ul	95
15) Fluoranthene	19.27	202	16495	0.40	ng/ul	95
17) Pyrene	19.64	202	16855	0.38	ng/ul	96
18) Benzo(a)anthracene	21.38	228	13733	0.39	ng/ul	95
19) Chrysene	21.43	228	15026	0.39	ng/ul	94
21) Benzo(b)fluoranthene	22.99	252	13946	0.36	ng/ul	98
22) Benzo(k)fluoranthene	23.04	252	14738	0.40	ng/ul	98
23) Benzo(a)pyrene	23.59	252	13489	0.39	ng/ul	99
24) Indeno(1,2,3-cd)pyrene	26.02	276	15188	0.38	ng/ul	98
25) Dibenzo(a,h)anthracene	26.05	278	12024	0.38	ng/ul	98
26) Benzo(g,h,i)perylene	26.73	276	13511	0.38	ng/ul	97

(#) = qualifier out of range (m) = manual integration (+) = signals summed

Data Path : Z:\HPCHEM1\BNA\_M\Data\BM010915\  
 Data File : BM000155.D  
 Acq On : 09 Jan 2015 11:58  
 Operator : TP/IZ  
 Sample : SSTD0.424  
 Misc :  
 ALS Vial : 4 Sample Multiplier: 1

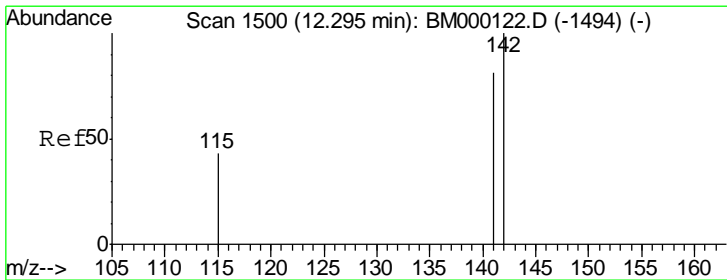
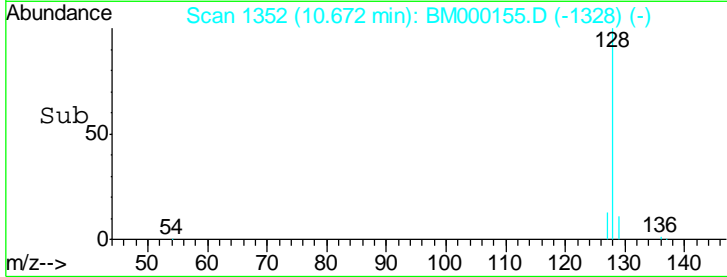
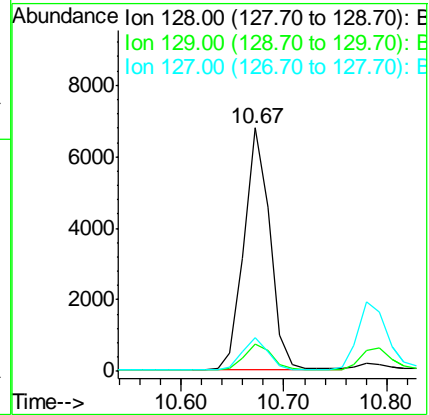
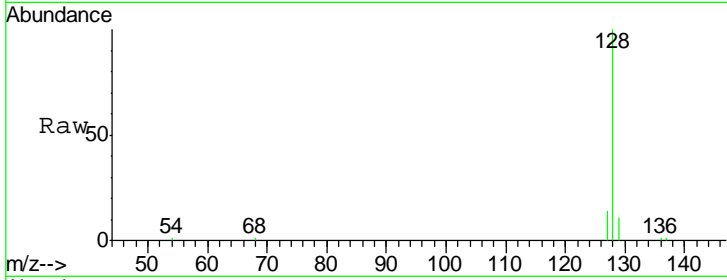
Quant Time: Jan 09 22:07:52 2015  
 Quant Method : Z:\HPCHEM1\BNA\_M\METHODS\SOM02.2-EPA-SIM-BM010715.M  
 Quant Title : ASP BNA STANDARDS FOR 5 POINT CALIBRATION  
 QLast Update : Thu Jan 08 10:41:47 2015  
 Response via : Initial Calibration





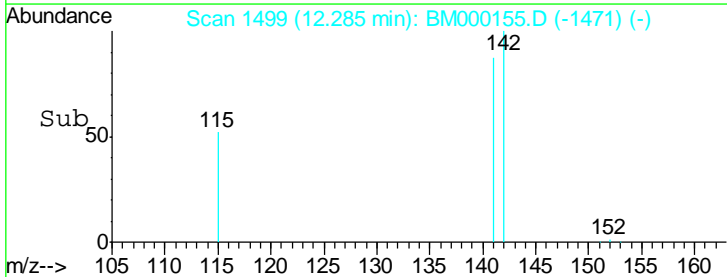
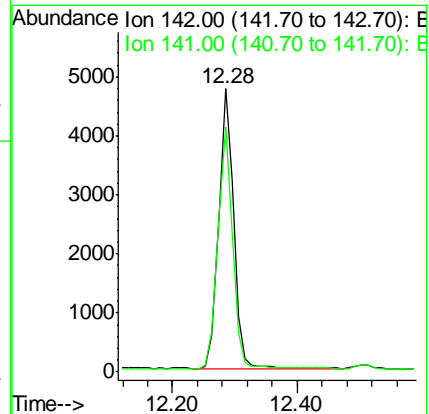
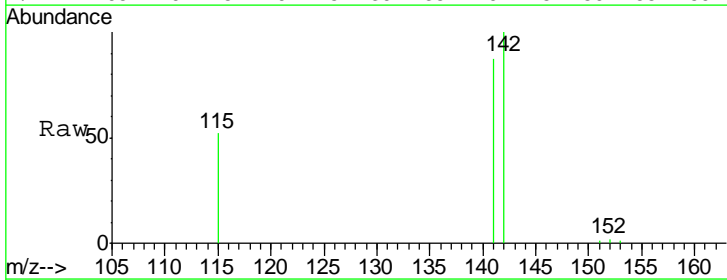
#3  
 Naphthalene  
 Concen: 0.39 ng/ul  
 RT: 10.67 min Scan# 1352  
 Delta R.T. -0.01 min  
 Lab File: BM000155.D  
 Acq: 09 Jan 2015 11:58

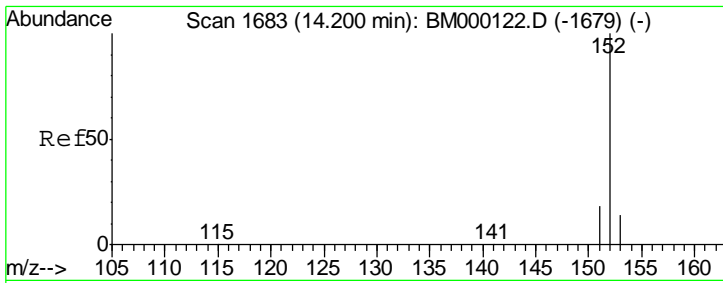
Tgt Ion	Resp	Lower	Upper
128	11656		
129	11.2	9.5	14.3
127	14.0	10.4	15.6



#5  
 2-Methylnaphthalene  
 Concen: 0.40 ng/ul  
 RT: 12.28 min Scan# 1499  
 Delta R.T. -0.01 min  
 Lab File: BM000155.D  
 Acq: 09 Jan 2015 11:58

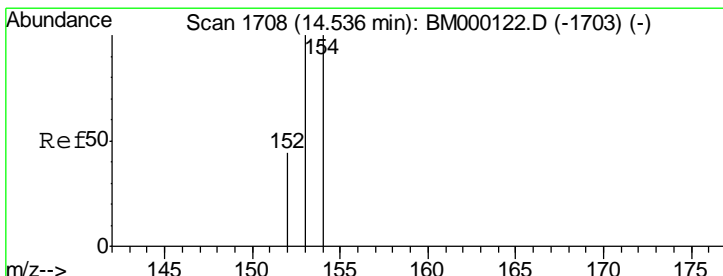
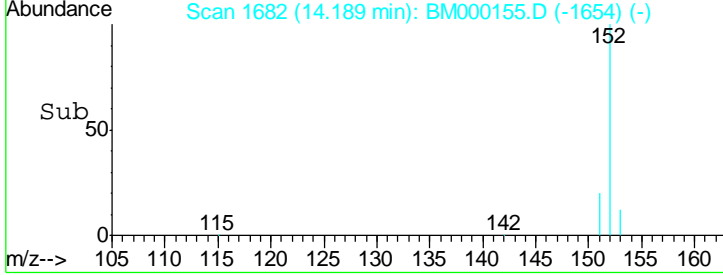
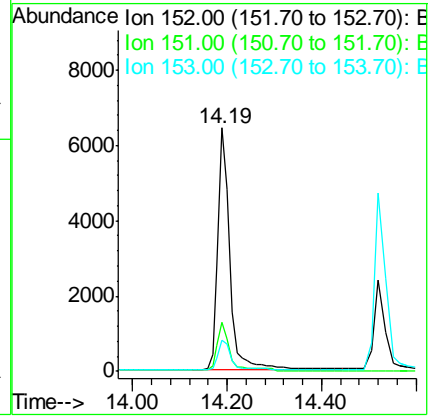
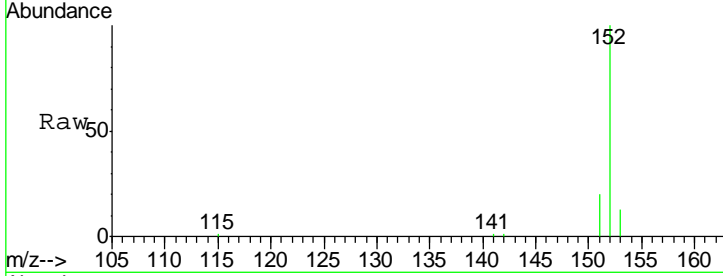
Tgt Ion	Resp	Lower	Upper
142	7848		
141	85.3	68.9	103.3





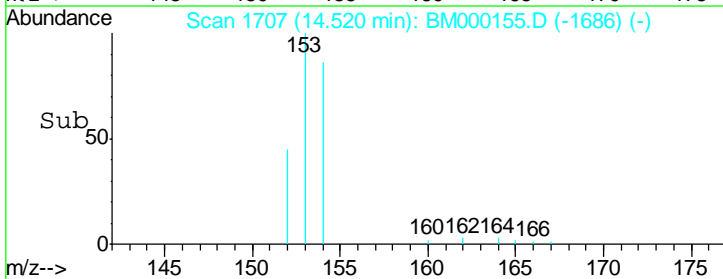
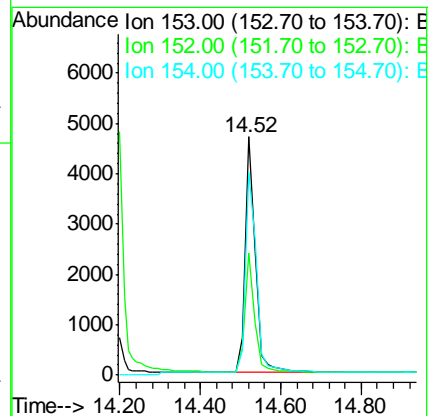
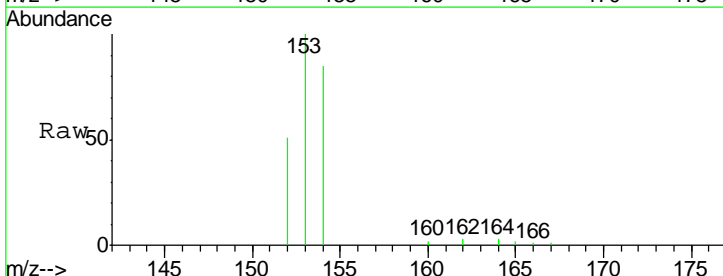
#7  
 Acenaphthylene  
 Concen: 0.40 ng/ul  
 RT: 14.19 min Scan# 1682  
 Delta R.T. -0.01 min  
 Lab File: BM000155.D  
 Acq: 09 Jan 2015 11:58

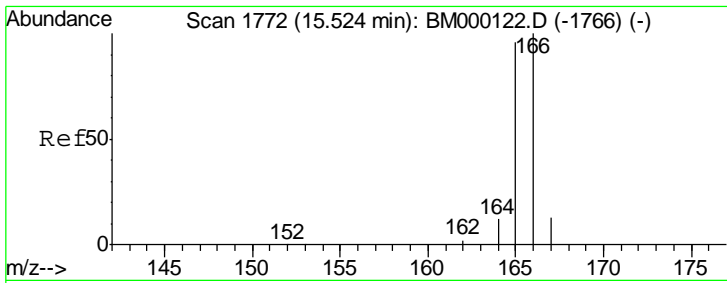
Tgt Ion	Resp	Lower	Upper
152	12963		
151	20.2	15.4	23.2
153	12.9	11.0	16.4



#8  
 Acenaphthene  
 Concen: 0.40 ng/ul  
 RT: 14.52 min Scan# 1707  
 Delta R.T. -0.02 min  
 Lab File: BM000155.D  
 Acq: 09 Jan 2015 11:58

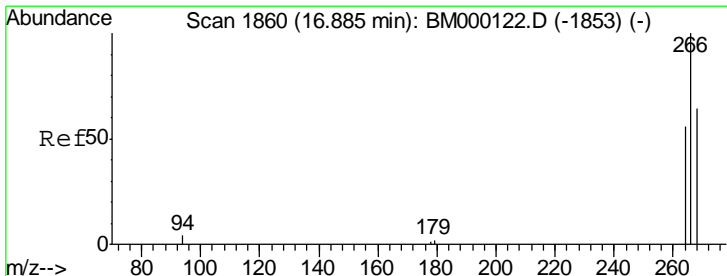
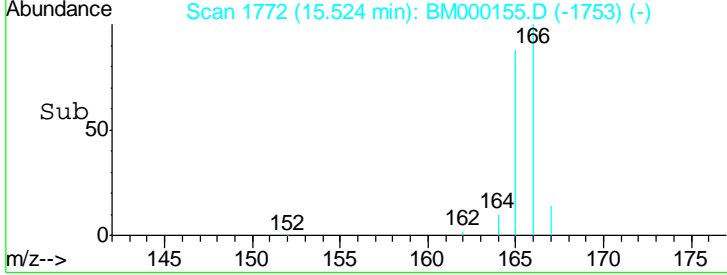
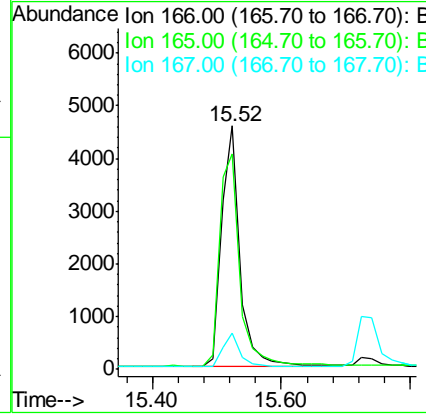
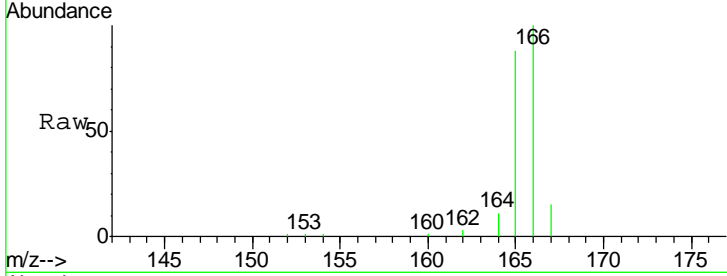
Tgt Ion	Resp	Lower	Upper
153	8043		
152	51.2	35.8	53.6
154	84.8	79.9	119.9





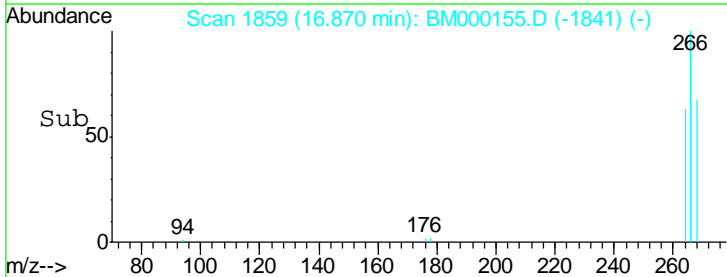
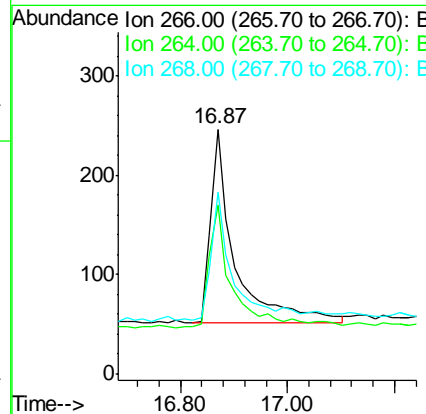
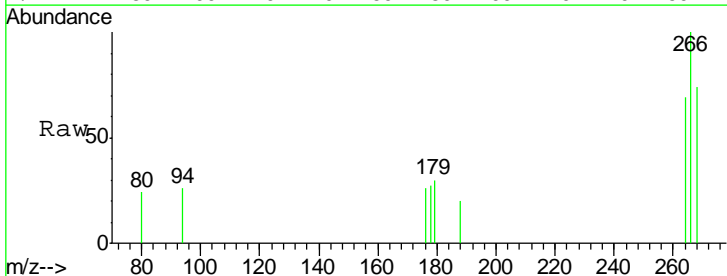
#9  
 Fluorene  
 Concen: 0.40 ng/ul  
 RT: 15.52 min Scan# 1772  
 Delta R.T. 0.00 min  
 Lab File: BM000155.D  
 Acq: 09 Jan 2015 11:58

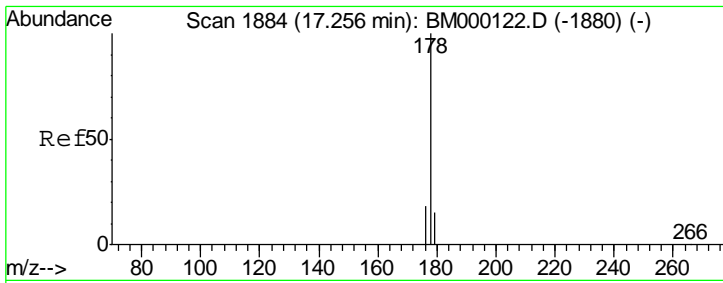
Tgt Ion	Resp	Lower	Upper
166	9237		
165	88.4	77.0	115.4
167	15.1	11.0	16.6



#11  
 Pentachlorophenol  
 Concen: 0.32 ng/ul  
 RT: 16.87 min Scan# 1859  
 Delta R.T. -0.02 min  
 Lab File: BM000155.D  
 Acq: 09 Jan 2015 11:58

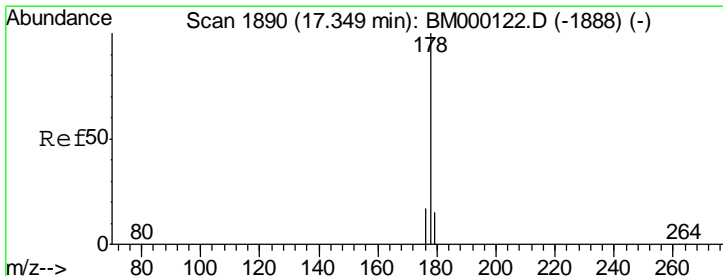
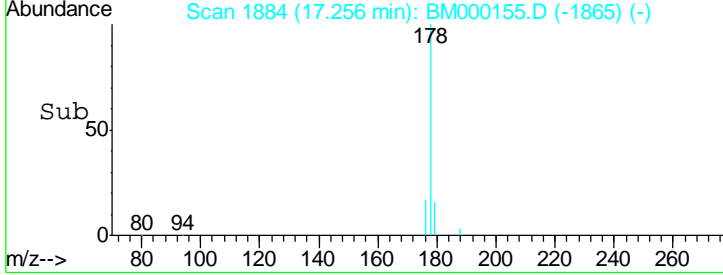
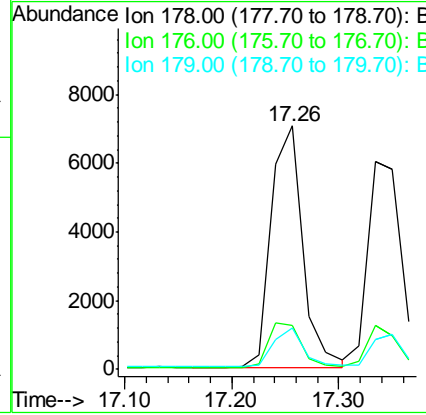
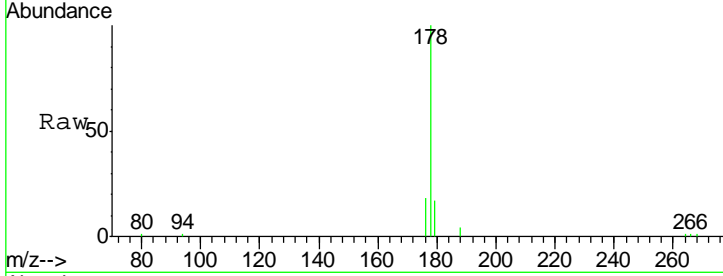
Tgt Ion	Resp	Lower	Upper
266	605		
264	60.5	53.9	80.9
268	60.7	49.2	73.8





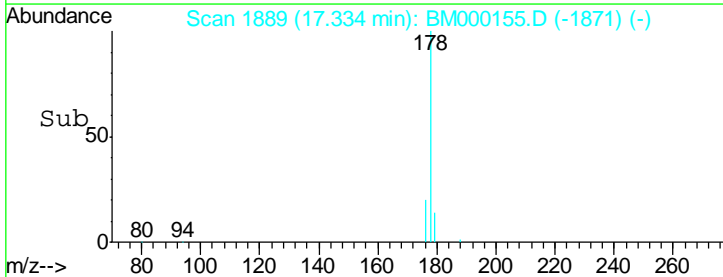
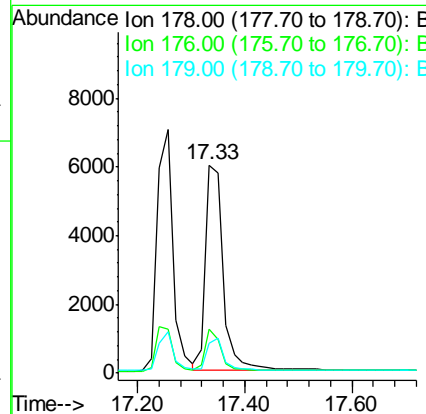
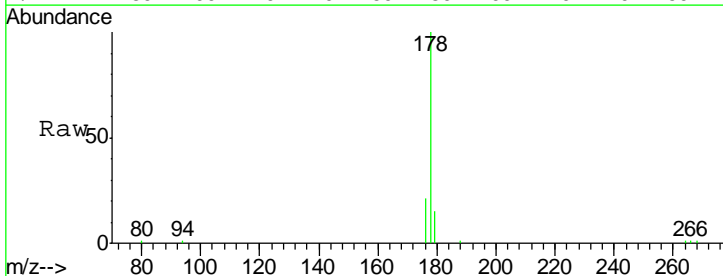
#12  
 Phenanthrene  
 Concen: 0.38 ng/ul  
 RT: 17.26 min Scan# 1884  
 Delta R.T. 0.00 min  
 Lab File: BM000155.D  
 Acq: 09 Jan 2015 11:58

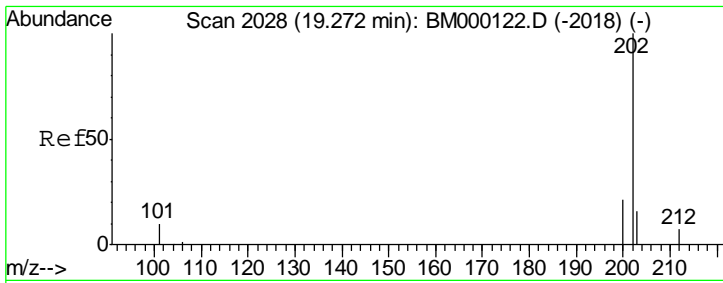
Tgt Ion	Resp	Lower	Upper
178	14350		
176	17.8	15.1	22.7
179	17.2	13.0	19.4



#13  
 Anthracene  
 Concen: 0.39 ng/ul  
 RT: 17.33 min Scan# 1889  
 Delta R.T. -0.02 min  
 Lab File: BM000155.D  
 Acq: 09 Jan 2015 11:58

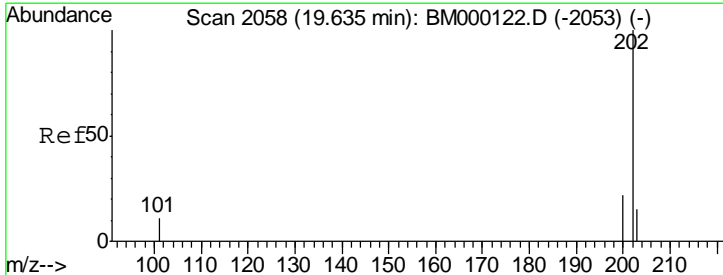
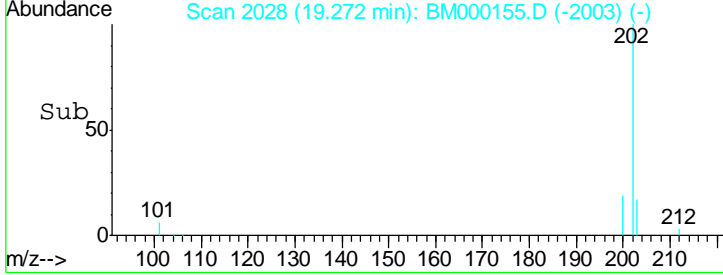
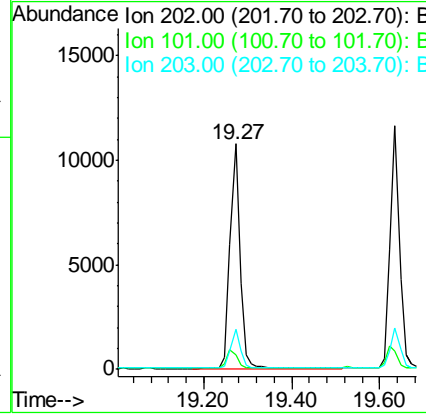
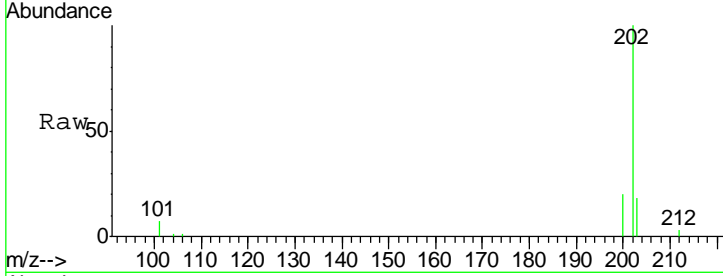
Tgt Ion	Resp	Lower	Upper
178	13852		
176	21.1	14.6	21.8
179	14.6	13.1	19.7





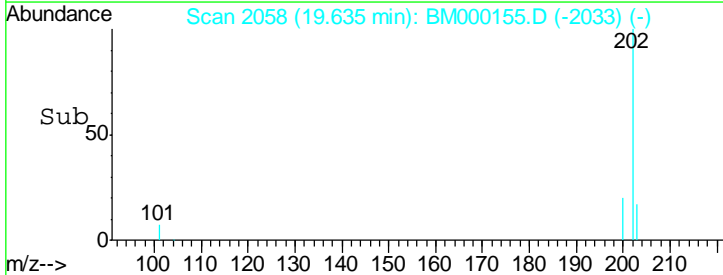
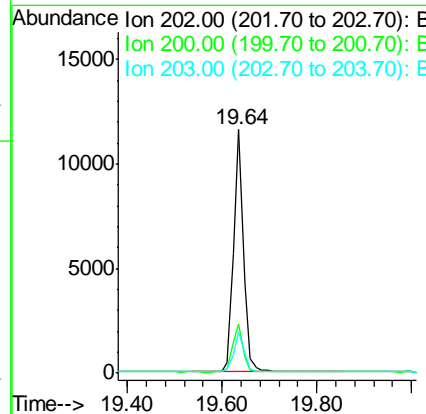
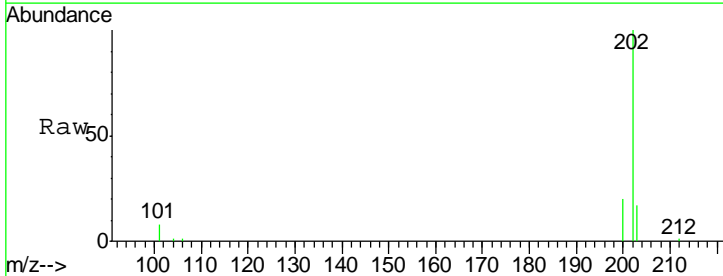
#15  
 Fluoranthene  
 Concen: 0.40 ng/ul  
 RT: 19.27 min Scan# 2028  
 Delta R.T. 0.00 min  
 Lab File: BM000155.D  
 Acq: 09 Jan 2015 11:58

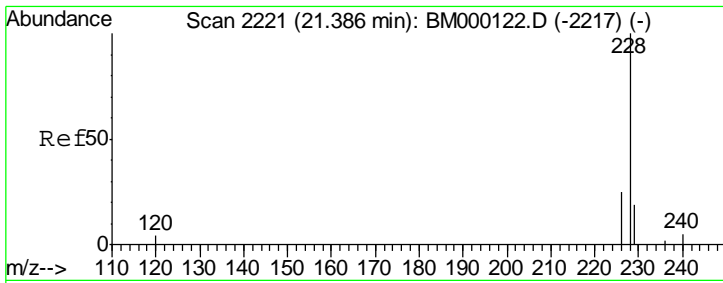
Tgt Ion	Resp	Lower	Upper
202	16495		
101	6.7	0.0	30.5
203	17.5	0.0	36.6



#17  
 Pyrene  
 Concen: 0.38 ng/ul  
 RT: 19.64 min Scan# 2058  
 Delta R.T. 0.00 min  
 Lab File: BM000155.D  
 Acq: 09 Jan 2015 11:58

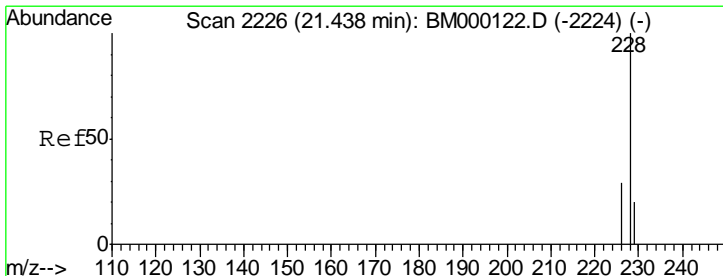
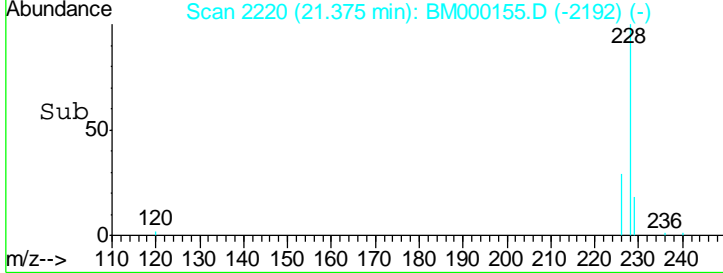
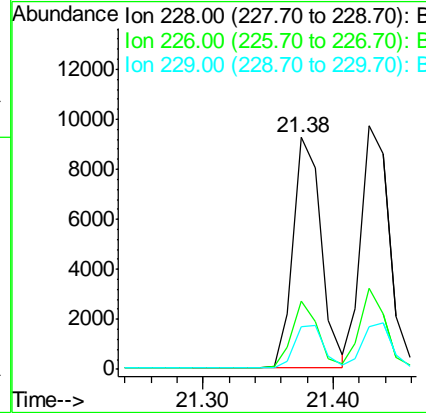
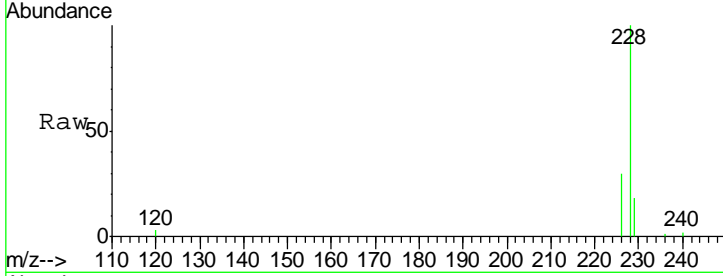
Tgt Ion	Resp	Lower	Upper
202	16855		
200	20.4	17.9	26.9
203	17.2	12.8	19.2





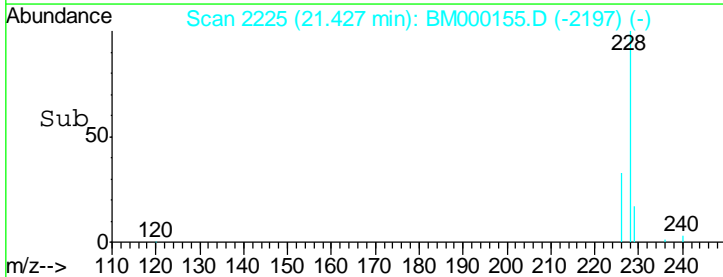
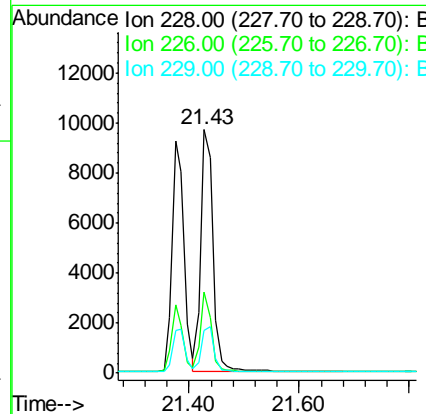
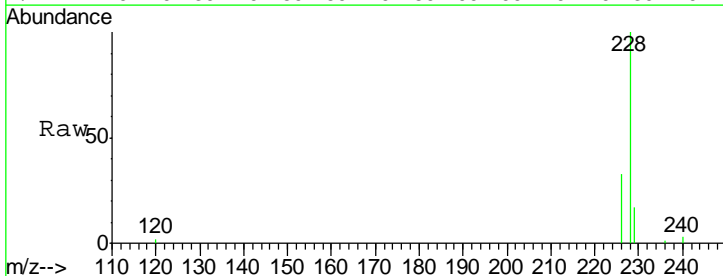
#18  
 Benzo(a)anthracene  
 Concen: 0.39 ng/ul  
 RT: 21.38 min Scan# 2220  
 Delta R.T. -0.01 min  
 Lab File: BM000155.D  
 Acq: 09 Jan 2015 11:58

Tgt Ion	Resp	Lower	Upper
228	13733		
226	29.6	20.8	31.2
229	18.2	15.5	23.3

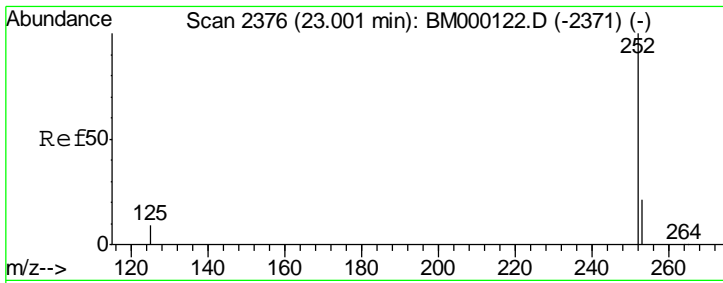


#19  
 Chrysene  
 Concen: 0.39 ng/ul  
 RT: 21.43 min Scan# 2225  
 Delta R.T. -0.01 min  
 Lab File: BM000155.D  
 Acq: 09 Jan 2015 11:58

Tgt Ion	Resp	Lower	Upper
228	15026		
226	33.3	23.8	35.6
229	17.4	15.8	23.8

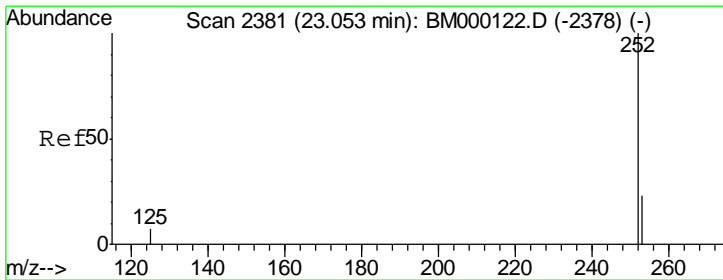
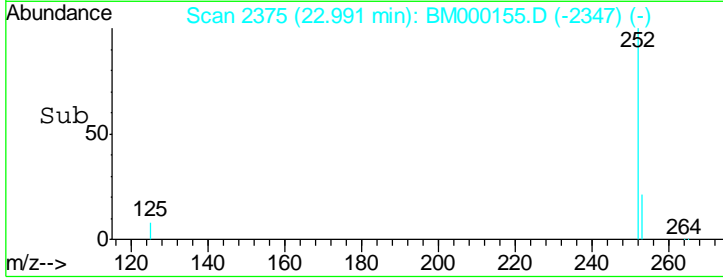
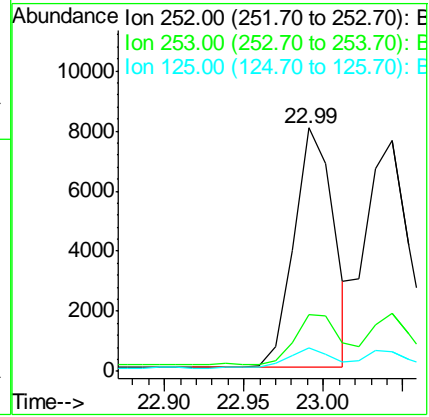
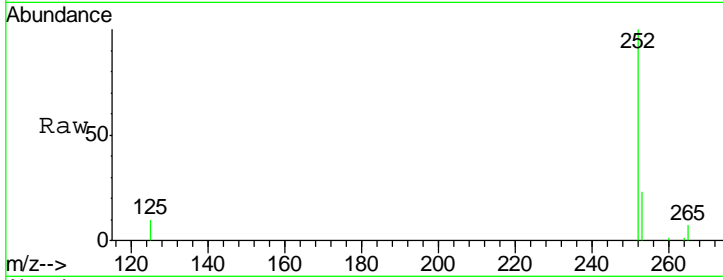






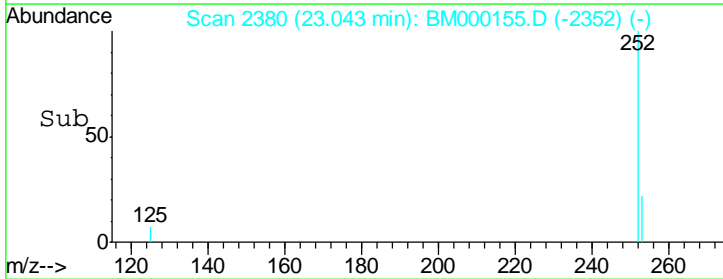
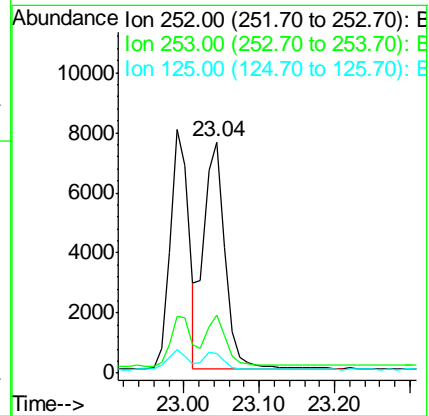
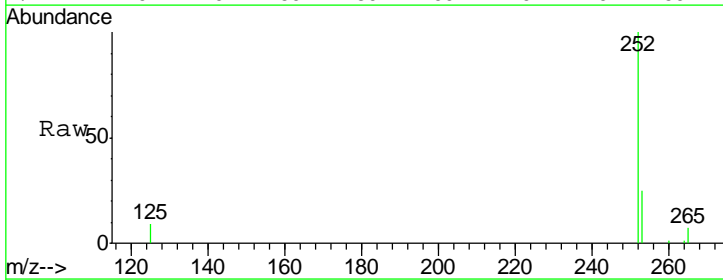
#21  
 Benzo(b)fluoranthene  
 Concen: 0.36 ng/ul  
 RT: 22.99 min Scan# 2375  
 Delta R.T. -0.01 min  
 Lab File: BM000155.D  
 Acq: 09 Jan 2015 11:58

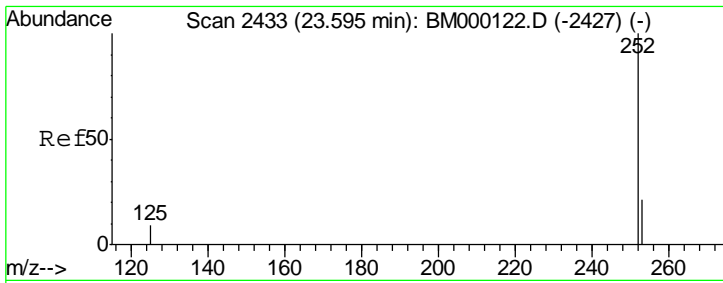
Tgt Ion	Resp	Lower	Upper
252	13946		
253	23.4	0.0	48.2
125	9.7	0.0	21.6



#22  
 Benzo(k)fluoranthene  
 Concen: 0.40 ng/ul  
 RT: 23.04 min Scan# 2380  
 Delta R.T. -0.01 min  
 Lab File: BM000155.D  
 Acq: 09 Jan 2015 11:58

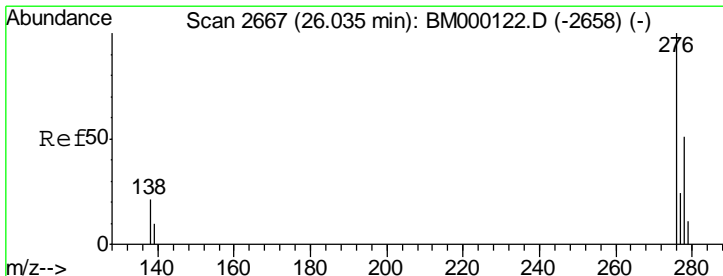
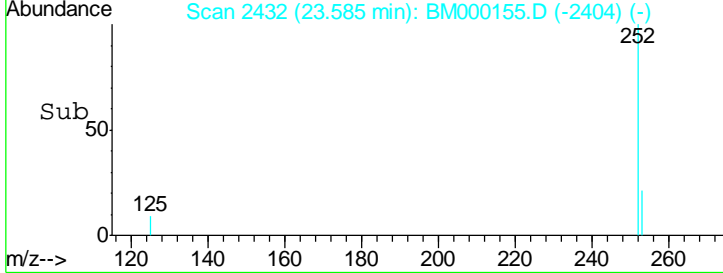
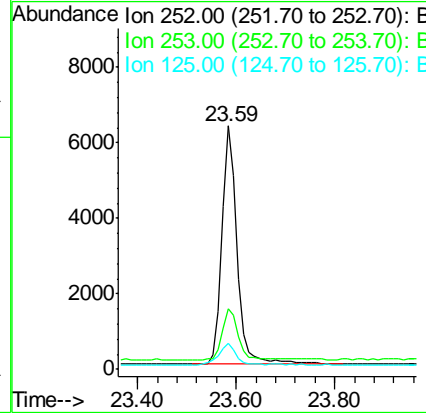
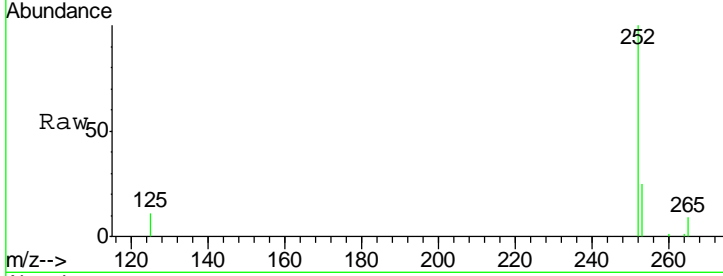
Tgt Ion	Resp	Lower	Upper
252	14738		
253	24.9	20.5	30.7
125	8.7	7.8	11.8





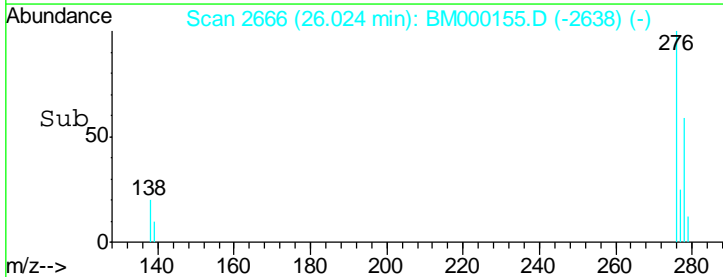
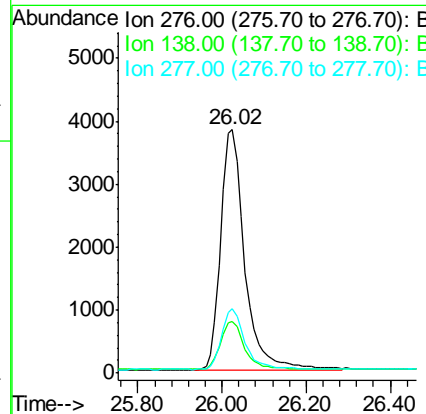
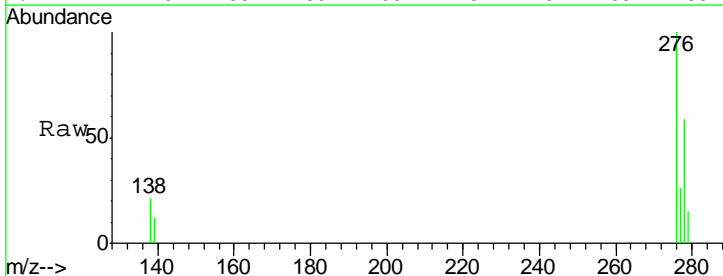
#23  
 Benzo(a)pyrene  
 Concen: 0.39 ng/ul  
 RT: 23.59 min Scan# 2432  
 Delta R.T. -0.01 min  
 Lab File: BM000155.D  
 Acq: 09 Jan 2015 11:58

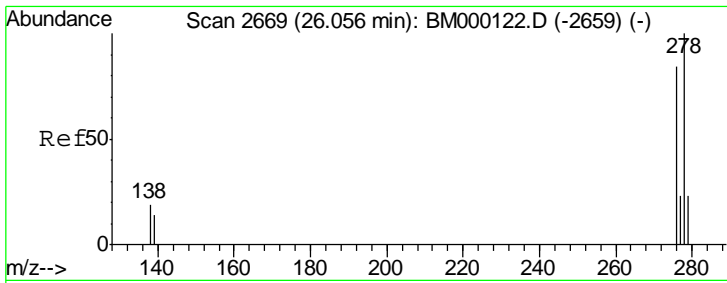
Tgt Ion	Resp	Lower	Upper
252	13489		
253	25.0	19.8	29.6
125	10.7	9.2	13.8



#24  
 Indeno(1,2,3-cd)pyrene  
 Concen: 0.38 ng/ul  
 RT: 26.02 min Scan# 2666  
 Delta R.T. -0.01 min  
 Lab File: BM000155.D  
 Acq: 09 Jan 2015 11:58

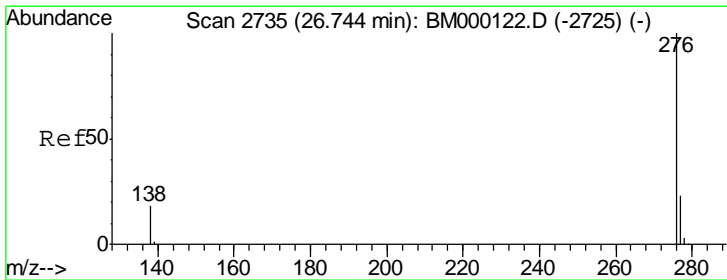
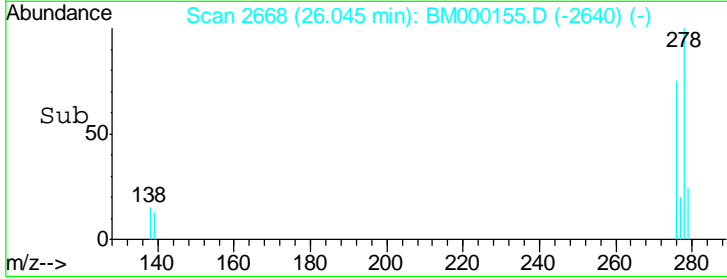
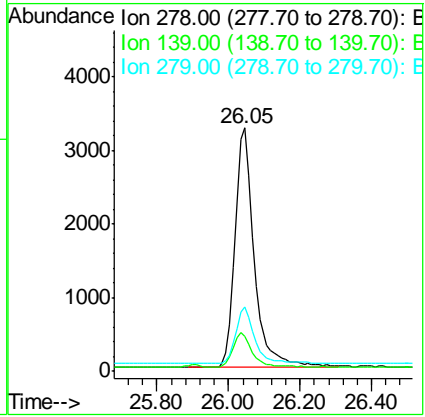
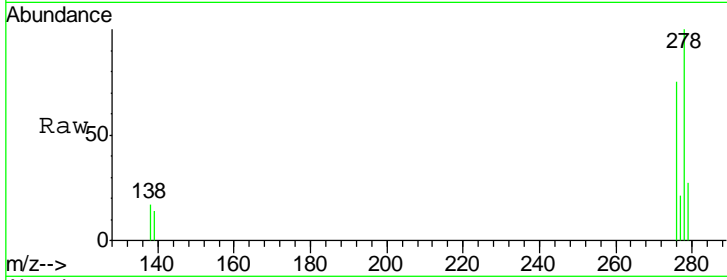
Tgt Ion	Resp	Lower	Upper
276	15188		
138	20.1	17.6	26.4
277	25.2	19.9	29.9





#25  
 Dibenzo(a,h)anthracene  
 Concen: 0.38 ng/ul  
 RT: 26.05 min Scan# 2668  
 Delta R.T. -0.01 min  
 Lab File: BM000155.D  
 Acq: 09 Jan 2015 11:58

Tgt Ion	Resp	Lower	Upper
278	12024		
139	14.3	12.6	18.8
279	26.7	20.6	30.8



#26  
 Benzo(g,h,i)perylene  
 Concen: 0.38 ng/ul  
 RT: 26.73 min Scan# 2734  
 Delta R.T. -0.01 min  
 Lab File: BM000155.D  
 Acq: 09 Jan 2015 11:58

Tgt Ion	Resp	Lower	Upper
276	13511		
277	24.1	20.0	30.0
138	17.9	15.7	23.5

