

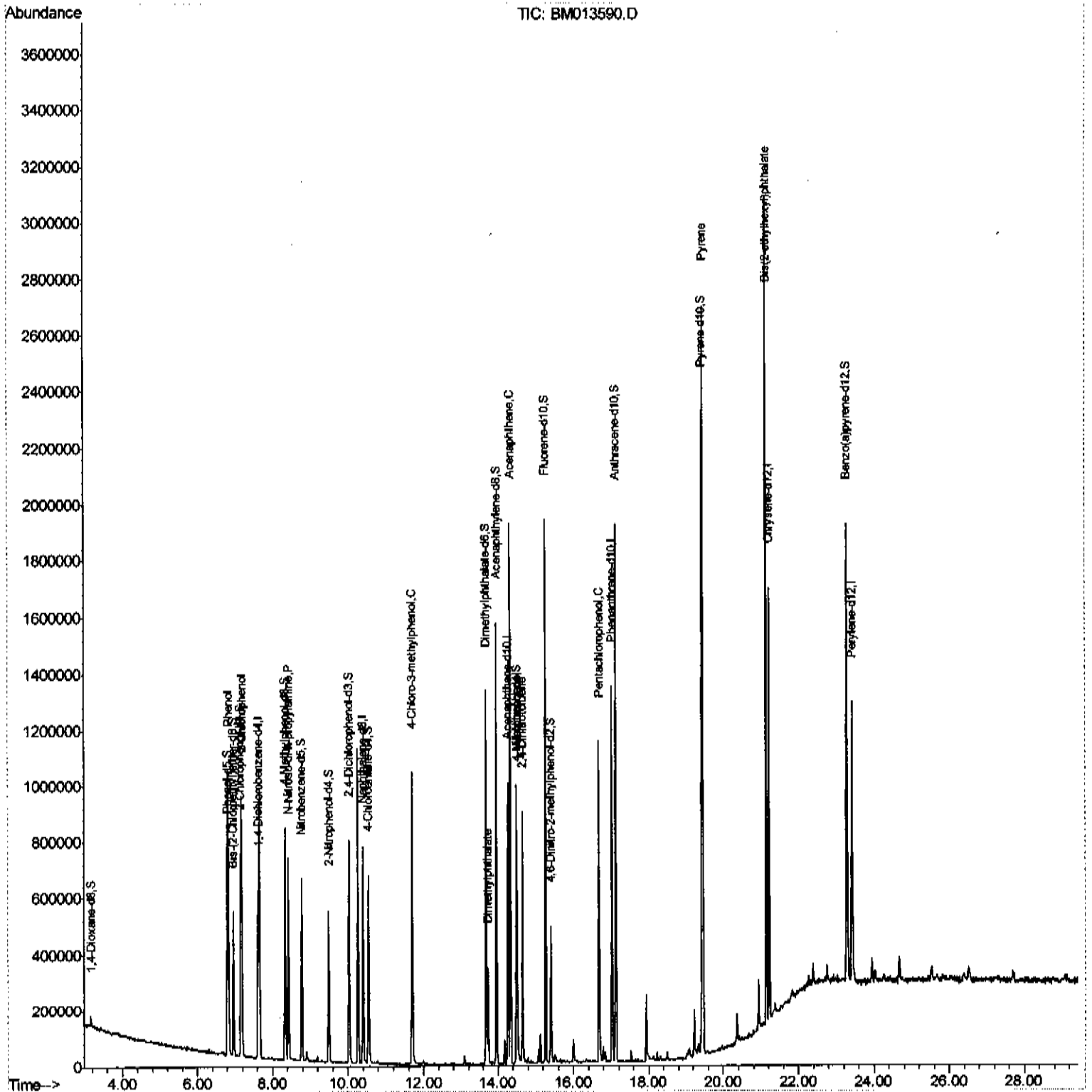
Data Path : Z:\HPCHEM1\BNA M\DATA\BM011518\
 Data File : BM013590.D
 Acq On : 15 Jan 2018 18:08
 Operator : SJ/JU
 Sample : J1079-11MS
 Misc :
 ALS Vial : 14 Sample Multiplier: 1

Instrument :
 BNA_M
 Client Sampled :
 DAJK1MS

Manual Integrations
 APPROVED

Sohil
 1/16/2018 5:06:00 PM

Quant Time: Jan 16 03:42:59 2018
 Quant Method : Z:\HPCHEM1\BNA M\METHODS\SOM-EPA-BM011018.M
 Quant Title : SVOA CALIBRATION
 QLast Update : Tue Jan 16 03:03:13 2018
 Response via : Initial Calibration



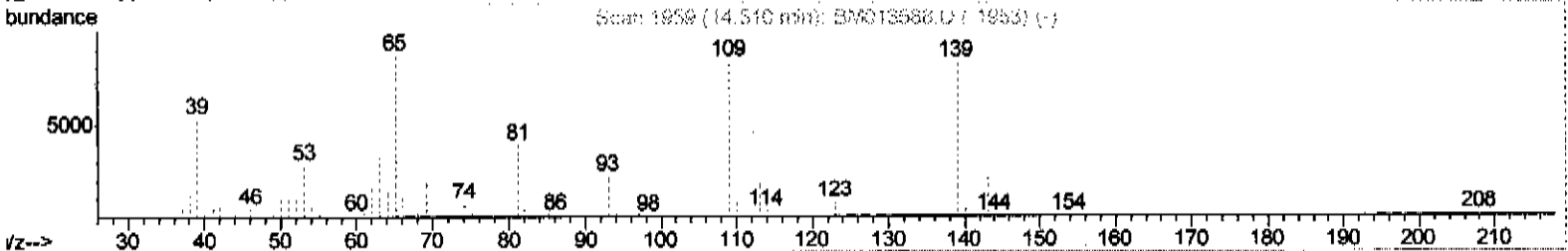
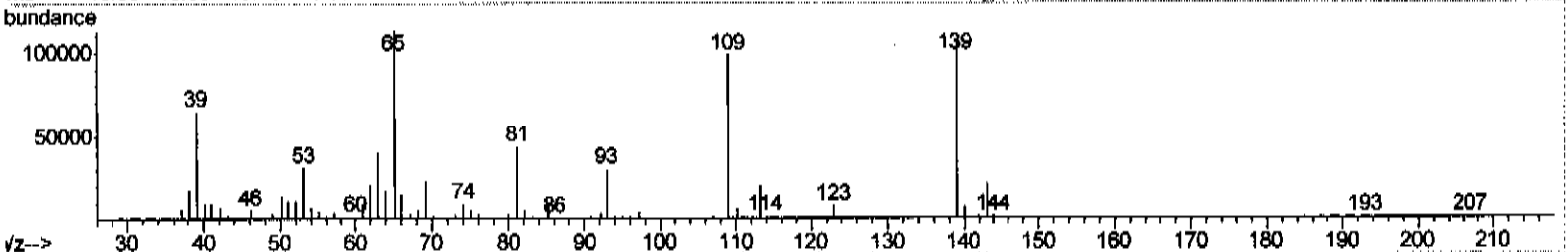
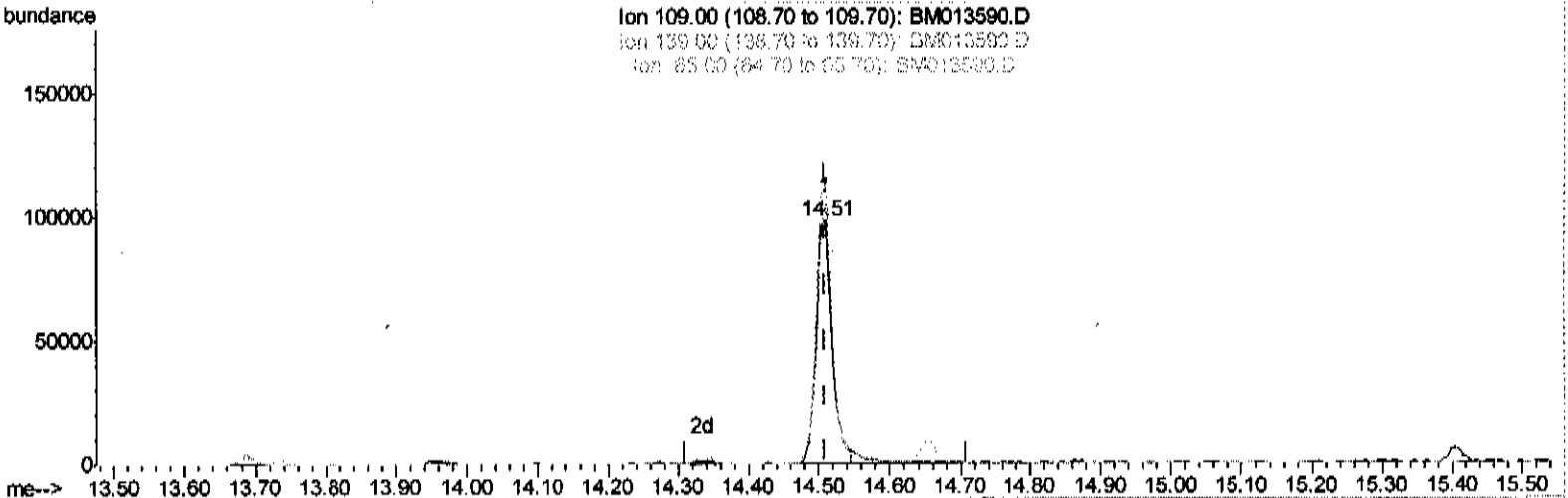
Data Path : Z:\HPCHEM1\BNA M\DATA\BM011518\
 Data File : BM013590.D
 Acq On : 15 Jan 2018 18:08
 Operator : SJ/JU
 Sample : J1079-11MS
 Misc :
 ALS Vial : 14 Sample Multiplier: 1

Instrument :
 BNA_M
 ClientSampled :
 DAJK1MS

Manual Integrations
 APPROVED

Schil
 1/16/2018 5:06:00 PM

Quant Time: Jan 16 03:09:42 2018
 Quant Method : Z:\HPCHEM1\BNA M\METHODS\SOM-EPA-BM011018.M
 Quant Title : SVOA CALIBRATION
 QLast Update : Tue Jan 16 03:03:13 2018
 Response via : Initial Calibration



TIC: BM013590.D

(52) 4-Nitrophenol

14.510min (+0.000) 33.83ng/ul

response 150558

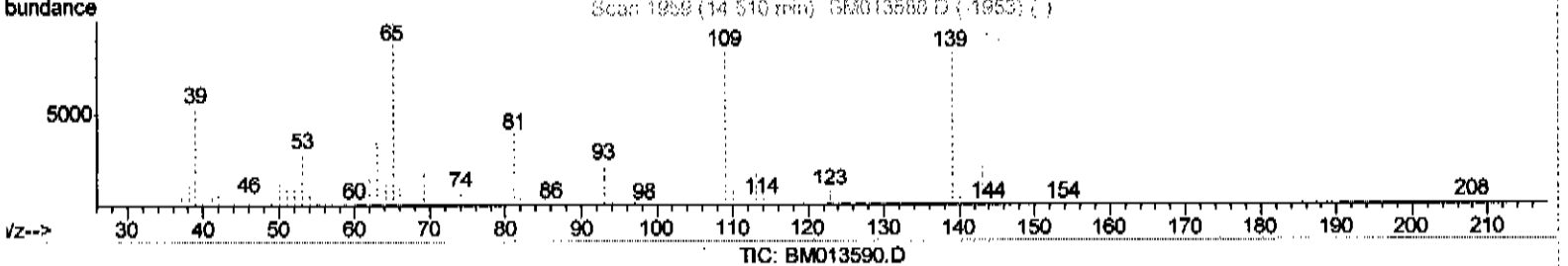
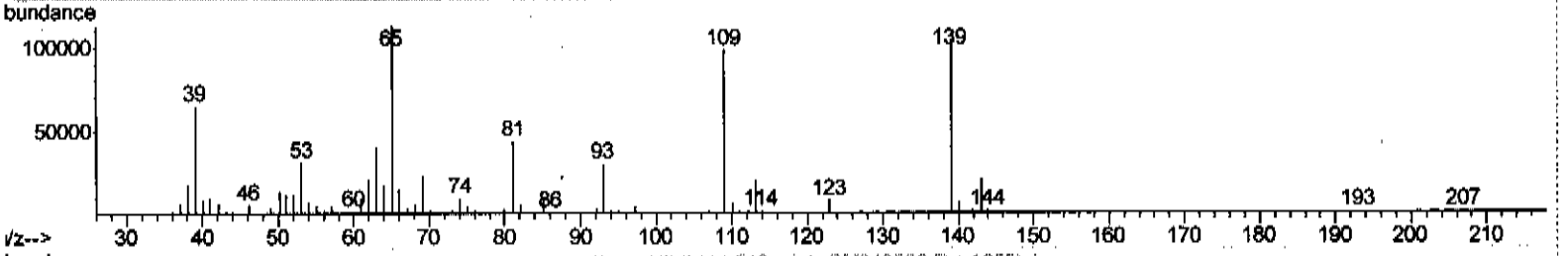
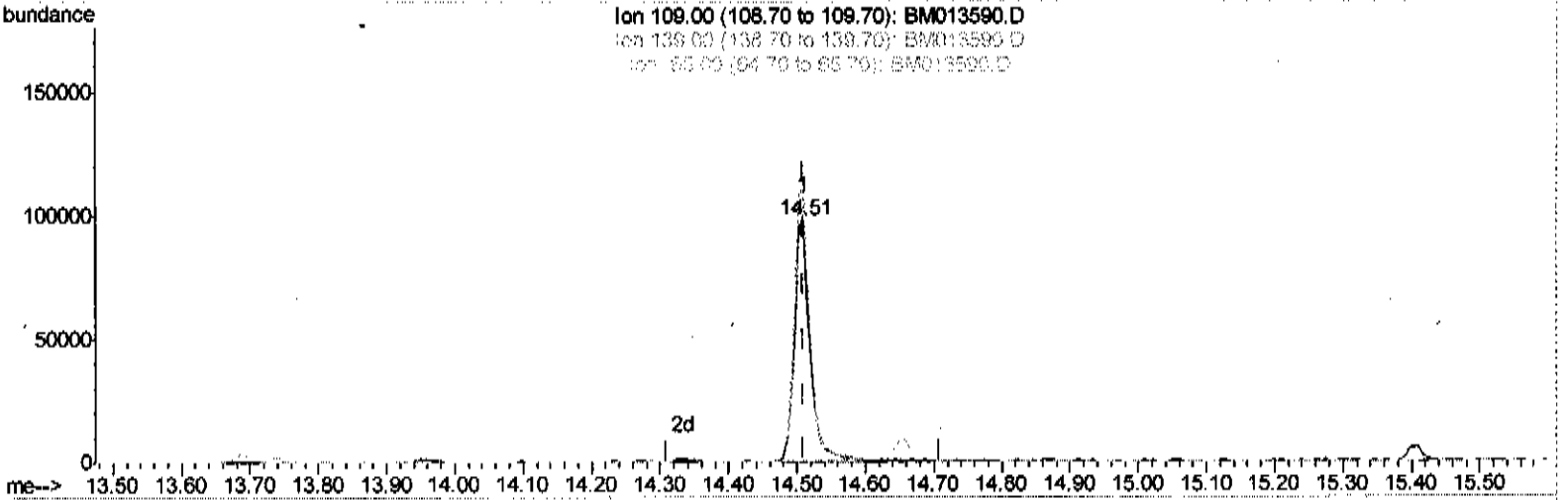
Ion	Exp%	Act%
109.00	100	100
139.00	100.00	106.79
65.00	150.00	115.30#
0.00	0.00	0.00

Data Path : Z:\HPCHEM1\BNA M\DATA\BM011518\
 Data File : BM013590.D
 Acq On : 15 Jan 2018 18:08
 Operator : SJ/JU
 Sample : J1079-11MS
 Misc :
 ALS Vial : 14 Sample Multiplier: 1

Instrument :
 BNA_M
 ClientSampled :
 DAJK1MS

Manual Integrations
 APPROVED
 Sohil
 1/16/2018 5:06:00 PM

Quant Time: Jan 16 03:09:42 2018
 Quant Method : Z:\HPCHEM1\BNA M\METHODS\SOM-EPA-BM011018.M
 Quant Title : SVOA CALIBRATION
 QLast Update : Tue Jan 16 03:03:13 2018
 Response via : Initial Calibration



(52) 4-Nitrophenol

14.510min (+0.000) 35.15ng/ul m

Handwritten signature: SJ 01/17/18

response 156448

Ion	Exp%	Act%
109.00	100	100
139.00	100.00	106.79
65.00	150.00	115.30#
0.00	0.00	0.00

Data Path : Z:\HPCHEM1\BNA M\DATA\BM011518\
 Data File : BM013590.D
 Acq On : 15 Jan 2018 18:08
 Operator : SJ/JU
 Sample : J1079-11MS
 Misc :
 ALS Vial : 14 Sample Multiplier: 1

Instrument :
 BNA_M
 Client Sampled :
 DAJK1MS

Manual Integrations
 APPROVED

Sohil
 1/16/2018 5:06:00 PM

Quant Time: Jan 16 03:42:59 2018
 Quant Method : Z:\HPCHEM1\BNA M\METHODS\SOM-EPA-BM011018.M
 Quant Title : SVOA CALIBRATION
 QLast Update : Tue Jan 16 03:03:13 2018
 Response via : Initial Calibration

Internal Standards	R.T.	QIon	Response	Conc	Units	Dev(Min)
1) 1,4-Dichlorobenzene-d4	7.62	152	147388	20.00	ng/ul	0.00
18) Naphthalene-d8	10.40	136	591796	20.00	ng/ul	0.00
35) Acenaphthene-d10	14.27	164	327113	20.00	ng/ul	0.00
61) Phenanthrene-d10	17.02	188	711608	20.00	ng/ul	0.00
75) Chrysene-d12	21.22	240	748762	20.00	ng/ul	0.00
83) Perylene-d12	23.41	264	718552	20.00	ng/ul	0.00

System Monitoring Compounds	R.T.	QIon	Response	Conc	Units	Dev(Min)
3) 1,4-Dioxane-d8	3.17	96	17840	4.78	ng/uL	0.00
5) Phenol-d5	6.80	99	350167	30.95	ng/ul	0.00
7) Bis-(2-Chloroethyl)ether-d	6.96	67	211992	30.92	ng/ul	0.00
9) 2-Chlorophenol-d4	7.16	132	280668	30.44	ng/ul	0.00
13) 4-Methylphenol-d8	8.33	113	286954	32.99	ng/ul	0.00
19) Nitrobenzene-d5	8.77	128	140058	30.50	ng/ul	0.00
22) 2-Nitrophenol-d4	9.49	143	143198	29.51	ng/ul	0.00
26) 2,4-Dichlorophenol-d3	10.03	165	274740	29.31	ng/ul	0.00
29) 4-Chloroaniline-d4	10.55	131	347313	42.70	ng/ul	0.00
43) Dimethylphthalate-d6	13.69	166	824875	30.60	ng/ul	0.00
46) Acenaphthylene-d8	13.96	160	1071241	31.16	ng/ul	0.00
51) 4-Nitrophenol-d4	14.49	143	114856	26.21	ng/ul	0.00
57) Fluorene-d10	15.27	176	696561	29.38	ng/ul	0.00
62) 4,6-Dinitro-2-methylphenol	15.40	200	101759	23.76	ng/ul	0.00
70) Anthracene-d10	17.12	188	1026513	29.62	ng/ul	0.00
76) Pyrene-d10	19.42	212	1132468	32.48	ng/ul	0.00
87) Benzo(a)pyrene-d12	23.28	264	1070748	32.42	ng/ul	0.00

Target Compounds	R.T.	QIon	Response	Conc	Units	Ovalue
6) Phenol	6.83	94	498310	43.909	ng/ul#	84
10) 2-Chlorophenol	7.19	128	365083	39.731	ng/ul	98
15) N-Nitroso-di-n-propylamine	8.43	70	244704	34.846	ng/ul#	71
33) 4-Chloro-3-methylphenol	11.70	107	360121	39.324	ng/ul	98
44) Dimethylphthalate	13.73	163	201081	7.586	ng/ul	97
49) Acenaphthene	14.33	153	717742	32.946	ng/ul	99
52) 4-Nitrophenol	14.51	109	156448m	35.151	ng/ul	99
54) 2,4-Dinitrotoluene	14.66	165	243097	32.465	ng/ul	86
68) Pentachlorophenol	16.67	266	196628	40.900	ng/ul	99
77) Pyrene	19.45	202	1520788	33.410	ng/ul#	92
81) Bis(2-ethylhexyl)phthalate	21.14	149	990029	41.153	ng/ul#	98

JU 01/17/18

(#) = qualifier out of range (m) = manual integration (+) = signals summed