

Data Path : Z:\HPCHEM1\BNA_M\DATA\BM012015\
 Data File : BM000278.D
 Acq On : 21 Jan 2015 00:33
 Operator : TP/IZ
 Sample : G1102-10
 Misc :
 ALS Vial : 19 Sample Multiplier: 1

Instrument :
 ClientSampled :
 C0AG8

Quant Time: Jan 21 03:23:06 2015
 Quant Method : Z:\HPCHEM1\BNA_M\METHODS\SOM01.2-EPA-BM122914.M
 Quant Title : SVOA CALIBRATION
 QLast Update : Wed Jan 21 02:17:47 2015
 Response via : Initial Calibration

Internal Standards	R.T.	QIon	Response	Conc	Units	Dev(Min)
1) 1,4-Dichlorobenzene-d4	7.82	152	134319	20.00	ng/ul	0.00
18) Naphthalene-d8	10.61	136	554898	20.00	ng/ul	0.00
35) Acenaphthene-d10	14.46	164	364889	20.00	ng/ul	0.00
61) Phenanthrene-d10	17.20	188	755700	20.00	ng/ul	0.00
75) Chrysene-d12	21.39	240	841330	20.00	ng/ul	0.00
83) Perylene-d12	23.67	264	837926	20.00	ng/ul	0.00

System Monitoring Compounds

3) 1,4-Dioxane-d8	3.31	96	14553	6.28	ng/uL	0.00
5) Phenol-d5	6.98	99	350268	31.00	ng/ul	0.00
7) Bis-(2-Chloroethyl)ether-d	7.15	67	246203	34.47	ng/ul	0.00
9) 2-Chlorophenol-d4	7.35	132	260674	31.46	ng/ul	0.00
13) 4-Methylphenol-d8	8.52	113	271367	30.19	ng/ul	0.00
19) Nitrobenzene-d5	8.97	128	137099	35.73	ng/ul	0.00
22) 2-Nitrophenol-d4	9.69	143	138762	35.42	ng/ul	0.00
26) 2,4-Dichlorophenol-d3	10.23	165	256911	29.69	ng/ul	0.00
29) 4-Chloroaniline-d4	10.75	131	329974	33.60	ng/ul	0.00
43) Dimethylphthalate-d6	13.86	166	818534	30.41	ng/ul	0.00
46) Acenaphthylene-d8	14.15	160	1016747	31.54	ng/ul	0.00
51) 4-Nitrophenol-d4	14.65	143	108522	24.78	ng/ul	0.00
57) Fluorene-d10	15.45	176	694378	30.05	ng/ul	0.00
62) 4,6-Dinitro-2-methylphenol	15.56	200	76306	21.31	ng/ul	0.00
70) Anthracene-d10	17.30	188	1082275	30.97	ng/ul	0.00
76) Pyrene-d10	19.59	212	1167647	30.09	ng/ul	0.00
87) Benzo(a)pyrene-d12	23.53	264	1108356	29.14	ng/ul	0.00

Target Compounds

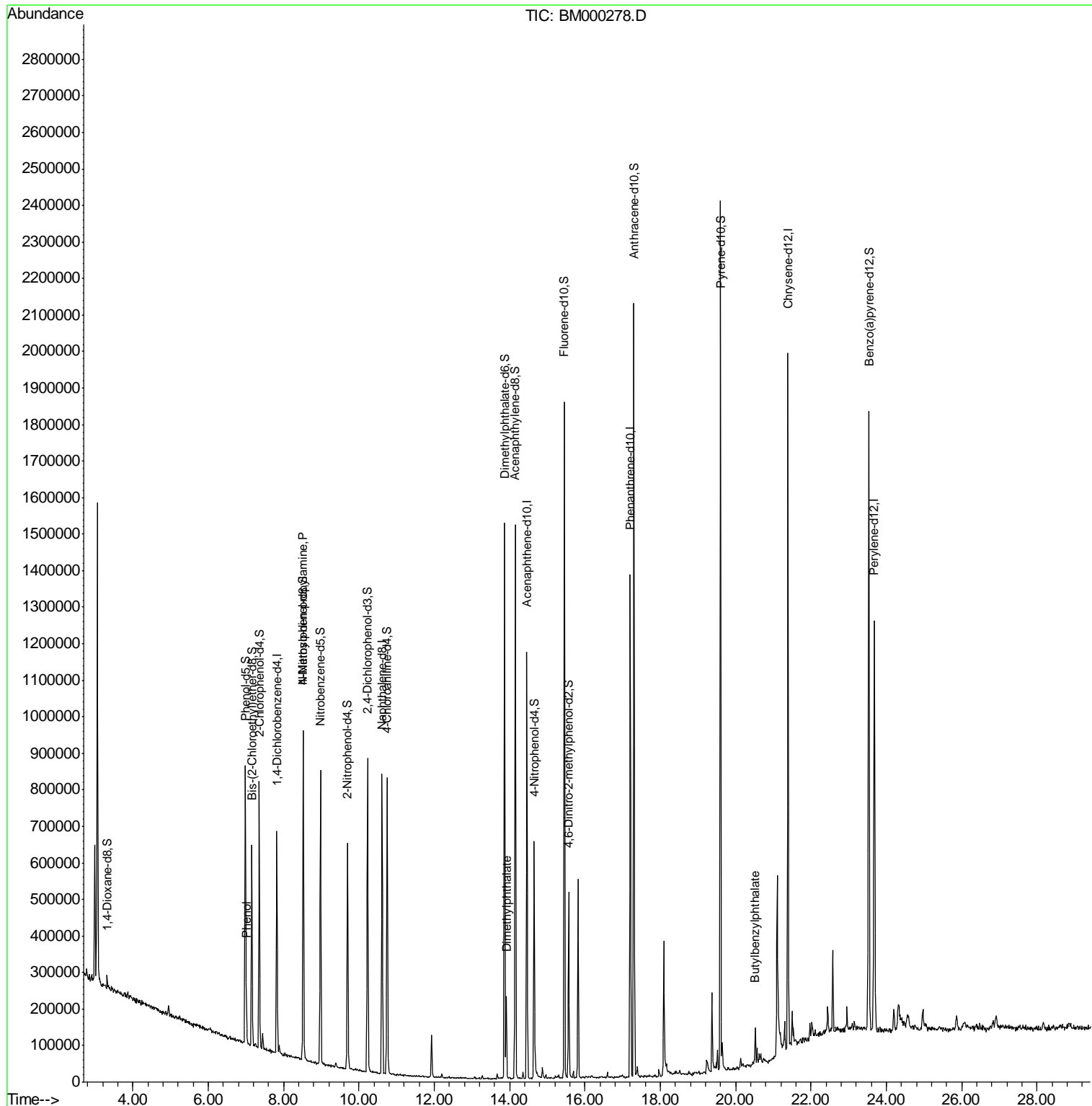
					Qvalue
6) Phenol	7.01	94	45194	3.79	ng/ul 92
15) N-Nitroso-di-n-propylamine	8.52	70	9683	1.18	ng/ul# 1
44) Dimethylphthalate	13.91	163	112166	4.18	ng/ul 99
78) Butylbenzylphthalate	20.52	149	26097	1.27	ng/ul 90

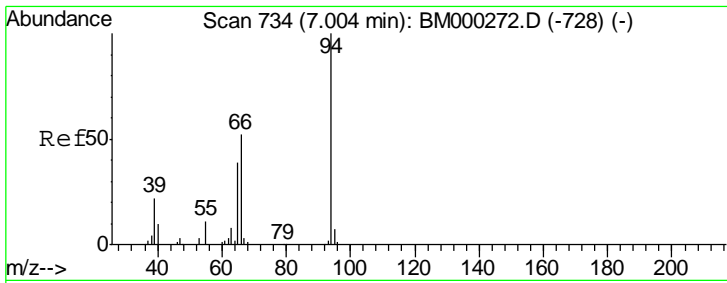
(#) = qualifier out of range (m) = manual integration (+) = signals summed

Data Path : Z:\HPCHEM1\BNA_M\DATA\BM012015\
 Data File : BM000278.D
 Acq On : 21 Jan 2015 00:33
 Operator : TP/IZ
 Sample : G1102-10
 Misc :
 ALS Vial : 19 Sample Multiplier: 1

Instrument :
 Client Sampled :
 C0AG8

Quant Time: Jan 21 03:23:06 2015
 Quant Method : Z:\HPCHEM1\BNA_M\METHODS\SOM01.2-EPA-BM122914.M
 Quant Title : SVOA CALIBRATION
 QLast Update : Wed Jan 21 02:17:47 2015
 Response via : Initial Calibration

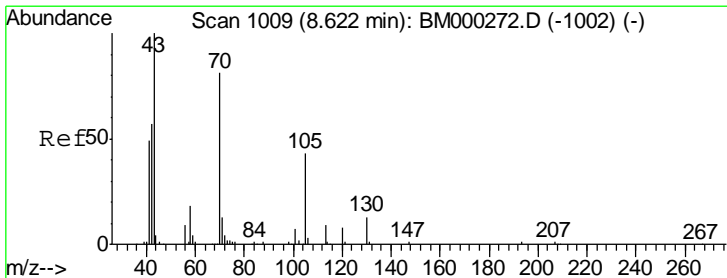
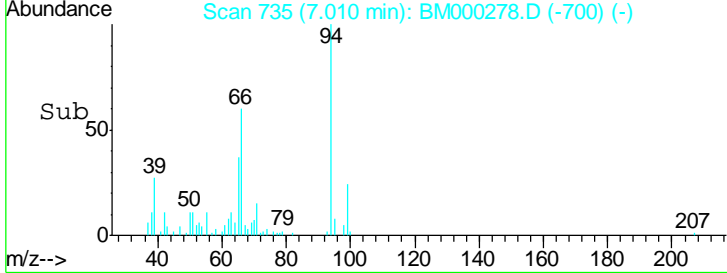
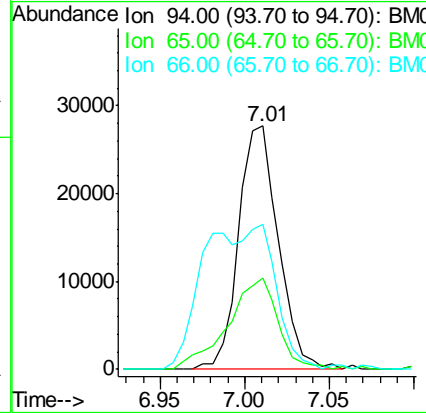
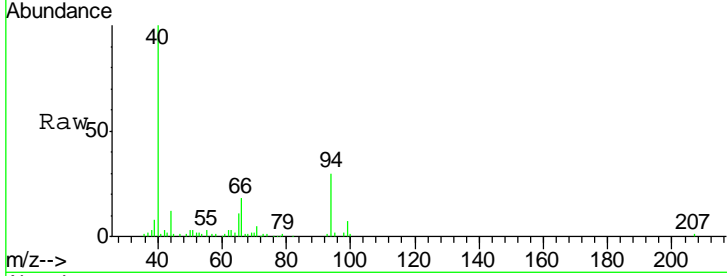




#6
 Phenol
 Concen: 3.79 ng/ul
 RT: 7.01 min Scan# 735
 Delta R.T. 0.01 min
 Lab File: BM000278.D
 Acq: 21 Jan 2015 00:33

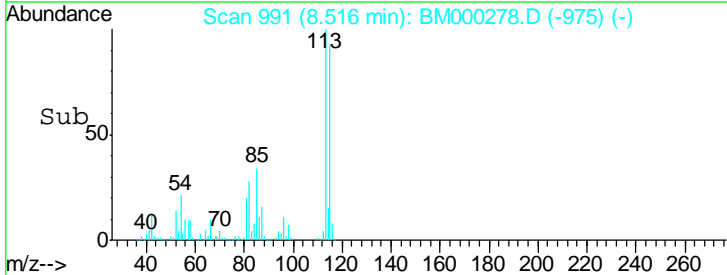
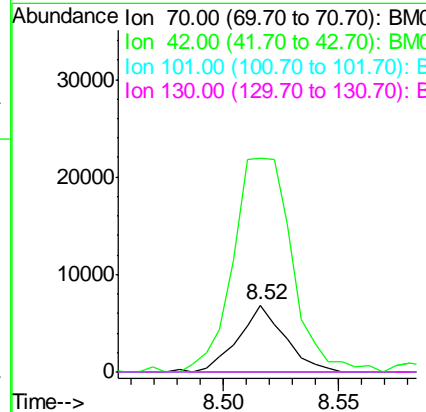
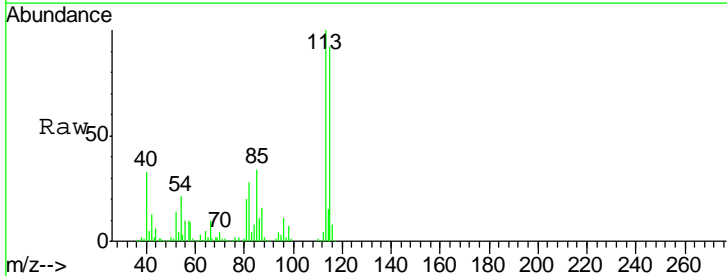
Instrument :
 Client Sampled :
 COAG8

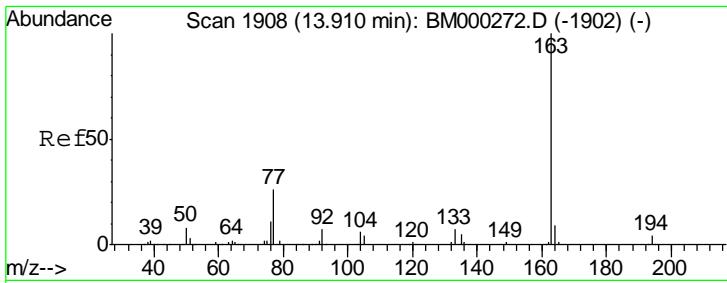
Tgt Ion	Resp	Lower	Upper
94	45194		
65	37.2	27.4	41.0
66	59.8	42.5	63.7



#15
 N-Nitroso-di-n-propylamine
 Concen: 1.18 ng/ul
 RT: 8.52 min Scan# 991
 Delta R.T. -0.11 min
 Lab File: BM000278.D
 Acq: 21 Jan 2015 00:33

Tgt Ion	Resp	Lower	Upper
70	9683		
42	319.1	46.4	69.6#
101	0.0	7.8	11.8#
130	0.0	14.6	21.8#

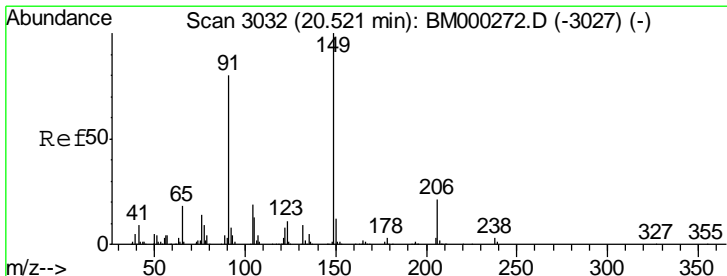
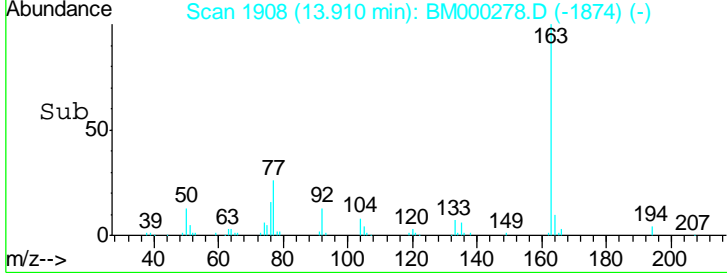
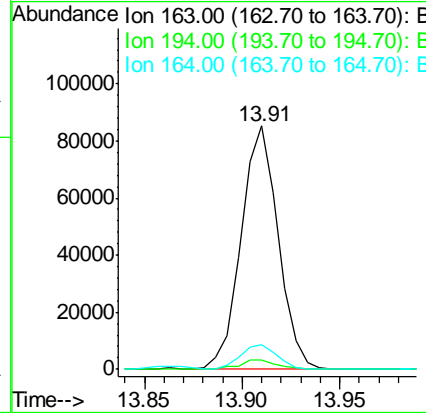
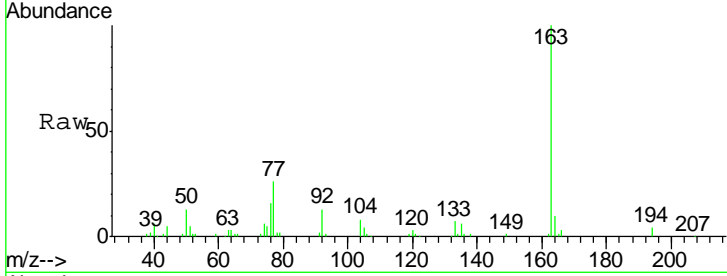




#44
 Dimethylphthalate
 Concen: 4.18 ng/ul
 RT: 13.91 min Scan# 1908
 Delta R.T. 0.00 min
 Lab File: BM000278.D
 Acq: 21 Jan 2015 00:33

Instrument :
 ClientSampled :
 C0AG8

Tgt Ion	Resp	Lower	Upper
163	112166		
194	3.6	3.0	4.4
164	10.2	8.5	12.7



#78
 Butylbenzylphthalate
 Concen: 1.27 ng/ul
 RT: 20.52 min Scan# 3032
 Delta R.T. 0.00 min
 Lab File: BM000278.D
 Acq: 21 Jan 2015 00:33

Tgt Ion	Resp	Lower	Upper
149	26097		
91	80.8	56.6	84.8
206	20.7	16.8	25.2

