

Data Path : Z:\HPCHEM1\BNA_M\DATA\BM012015\
 Data File : BM000297.D
 Acq On : 21 Jan 2015 12:53
 Operator : TP/IZ
 Sample : G1105-09
 Misc :
 ALS Vial : 37 Sample Multiplier: 1

Instrument :
 ClientSampleId :
 COAT5

Quant Time: Jan 22 02:26:52 2015
 Quant Method : Z:\HPCHEM1\BNA_M\METHODS\SOM01.2-EPA-BM122914.M
 Quant Title : SVOA CALIBRATION
 QLast Update : Thu Jan 22 02:18:27 2015
 Response via : Initial Calibration

Internal Standards	R.T.	QIon	Response	Conc	Units	Dev(Min)
1) 1,4-Dichlorobenzene-d4	7.82	152	152734	20.00	ng/ul	0.00
18) Naphthalene-d8	10.61	136	578203	20.00	ng/ul	0.00
35) Acenaphthene-d10	14.46	164	355804	20.00	ng/ul	0.00
61) Phenanthrene-d10	17.20	188	704841	20.00	ng/ul	0.00
75) Chrysene-d12	21.39	240	818083	20.00	ng/ul	0.00
83) Perylene-d12	23.68	264	796530	20.00	ng/ul	0.00

System Monitoring Compounds

3) 1,4-Dioxane-d8	3.31	96	10061	3.82	ng/uL	0.00
5) Phenol-d5	6.98	99	212580	16.55	ng/ul	0.00
7) Bis-(2-Chloroethyl)ether-d	7.15	67	149937	18.46	ng/ul	0.00
9) 2-Chlorophenol-d4	7.35	132	156538	16.62	ng/ul	0.00
13) 4-Methylphenol-d8	8.52	113	155047	15.17	ng/ul	0.00
19) Nitrobenzene-d5	8.97	128	81833	20.47	ng/ul	0.00
22) 2-Nitrophenol-d4	9.69	143	76095	18.64	ng/ul	0.00
26) 2,4-Dichlorophenol-d3	10.23	165	143945	15.96	ng/ul	0.00
29) 4-Chloroaniline-d4	10.75	131	170926	16.70	ng/ul	0.00
43) Dimethylphthalate-d6	13.86	166	472478	18.00	ng/ul	0.00
46) Acenaphthylene-d8	14.14	160	580955	18.48	ng/ul	0.00
51) 4-Nitrophenol-d4	14.64	143	51154	11.98	ng/ul	0.00
57) Fluorene-d10	15.44	176	407484	18.08	ng/ul	0.00
62) 4,6-Dinitro-2-methylphenol	15.56	200	39703	11.89	ng/ul	0.00
70) Anthracene-d10	17.30	188	604915	18.56	ng/ul	0.00
76) Pyrene-d10	19.59	212	687976	18.23	ng/ul	0.00
87) Benzo(a)pyrene-d12	23.53	264	647097	17.90	ng/ul	0.00

Target Compounds

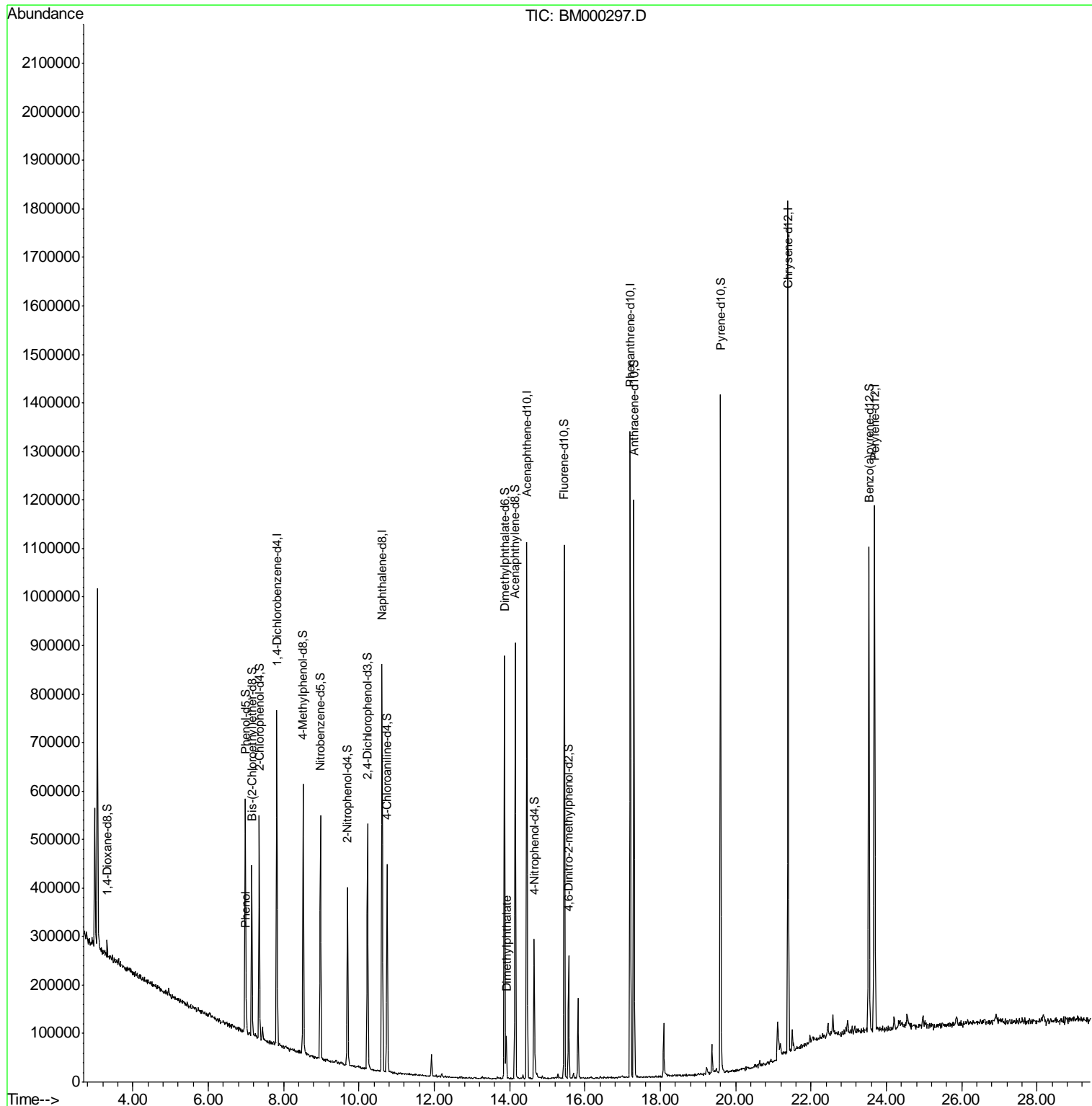
					Qvalue
6) Phenol	7.00	94	15360	1.13	ng/ul 91
44) Dimethylphthalate	13.91	163	43305	1.66	ng/ul# 99

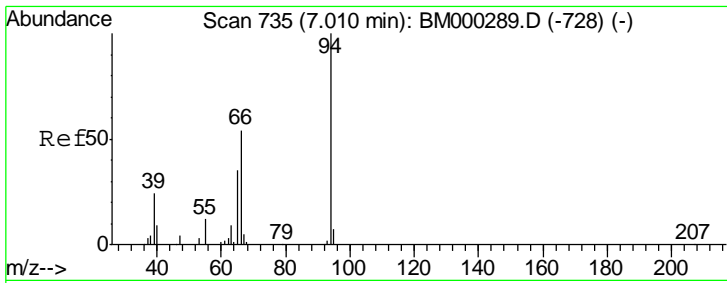
(#) = qualifier out of range (m) = manual integration (+) = signals summed

Data Path : Z:\HPCHEM1\BNA_M\DATA\BM012015\
 Data File : BM000297.D
 Acq On : 21 Jan 2015 12:53
 Operator : TP/IZ
 Sample : G1105-09
 Misc :
 ALS Vial : 37 Sample Multiplier: 1

Instrument :
 Client Sampled :
 COAT5

Quant Time: Jan 22 02:26:52 2015
 Quant Method : Z:\HPCHEM1\BNA_M\METHODS\SOM01.2-EPA-BM122914.M
 Quant Title : SVOA CALIBRATION
 QLast Update : Thu Jan 22 02:18:27 2015
 Response via : Initial Calibration

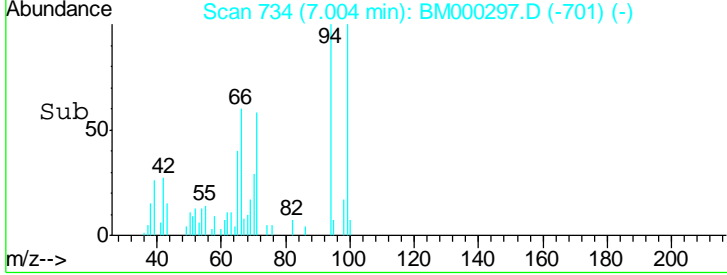
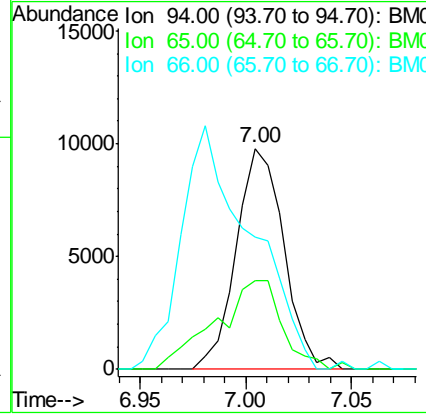
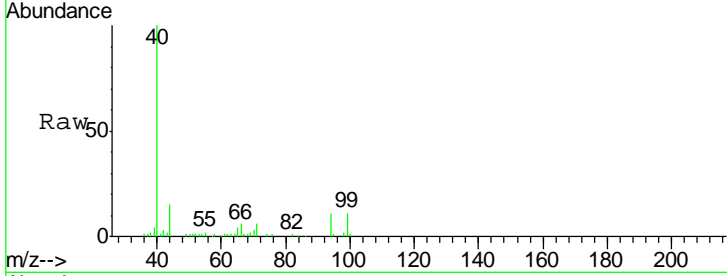




#6
 Phenol
 Concen: 1.13 ng/ul
 RT: 7.00 min Scan# 734
 Delta R.T. -0.01 min
 Lab File: BM000297.D
 Acq: 21 Jan 2015 12:53

Instrument :
 ClientSampled :
 COAT5

Tgt Ion	Resp	Lower	Upper
94	15360		
65	39.9	27.4	41.0
66	59.5	42.5	63.7



#44
 Dimethylphthalate
 Concen: 1.66 ng/ul
 RT: 13.91 min Scan# 1908
 Delta R.T. -0.00 min
 Lab File: BM000297.D
 Acq: 21 Jan 2015 12:53

Tgt Ion	Resp	Lower	Upper
163	43305		
194	5.1	3.0	4.4#
164	10.7	8.5	12.7

