

Data Path : Z:\HPCHEM1\BNA M\DATA\BM012218\
 Data File : BM013725.D
 Acq On : 23 Jan 2018 10:22
 Operator : SJ/JU
 Sample : J1174-03
 Misc :
 ALS Vial : 41 Sample Multiplier: 1

Instrument :
 BNA_M
 ClientSampleId :

Quant Time: Jan 23 12:42:42 2018
 Quant Method : Z:\HPCHEM1\BNA M\METHODS\SOM-EPA-BM011018.M
 Quant Title : SVOA CALIBRATION
 QLast Update : Tue Jan 23 06:05:57 2018
 Response via : Initial Calibration

Internal Standards	R.T.	QIon	Response	Conc	Units	Dev(Min)
1) 1,4-Dichlorobenzene-d4	7.61	152	171057	20.00	ng/ul	0.00
18) Naphthalene-d8	10.39	136	671010	20.00	ng/ul	0.00
35) Acenaphthene-d10	14.26	164	361870	20.00	ng/ul	0.00
61) Phenanthrene-d10	17.01	188	805676	20.00	ng/ul	0.00
75) Chrysene-d12	21.21	240	956930	20.00	ng/ul	0.00
83) Perylene-d12	23.41	264	979205	20.00	ng/ul	0.00

System Monitoring Compounds

3) 1,4-Dioxane-d8	3.16	96	8102	1.87	ng/uL	0.00
5) Phenol-d5	6.79	99	196228	14.94	ng/ul	0.00
7) Bis-(2-Chloroethyl)ether-d	6.95	67	124774	15.68	ng/ul	0.00
9) 2-Chlorophenol-d4	7.15	132	169149	15.81	ng/ul	0.00
13) 4-Methylphenol-d8	8.32	113	144687	14.33	ng/ul	0.00
19) Nitrobenzene-d5	8.76	128	86628	16.64	ng/ul	0.00
22) 2-Nitrophenol-d4	9.48	143	88585	16.10	ng/ul	0.00
26) 2,4-Dichlorophenol-d3	10.02	165	158672	14.93	ng/ul	0.00
29) 4-Chloroaniline-d4	10.53	131	176244	19.11	ng/ul	0.00
43) Dimethylphthalate-d6	13.67	166	506645	16.99	ng/ul	0.00
46) Acenaphthylene-d8	13.95	160	634251	16.68	ng/ul	0.00
51) 4-Nitrophenol-d4	14.49	143	56406	11.64	ng/ul	0.00
57) Fluorene-d10	15.26	176	439981	16.78	ng/ul	0.00
62) 4,6-Dinitro-2-methylphenol	15.40	200	56156	11.58	ng/ul	0.00
70) Anthracene-d10	17.11	188	668405	17.03	ng/ul	0.00
76) Pyrene-d10	19.42	212	790054	17.73	ng/ul	0.00
87) Benzo(a)pyrene-d12	23.27	264	816159	18.13	ng/ul	0.00

Target Compounds

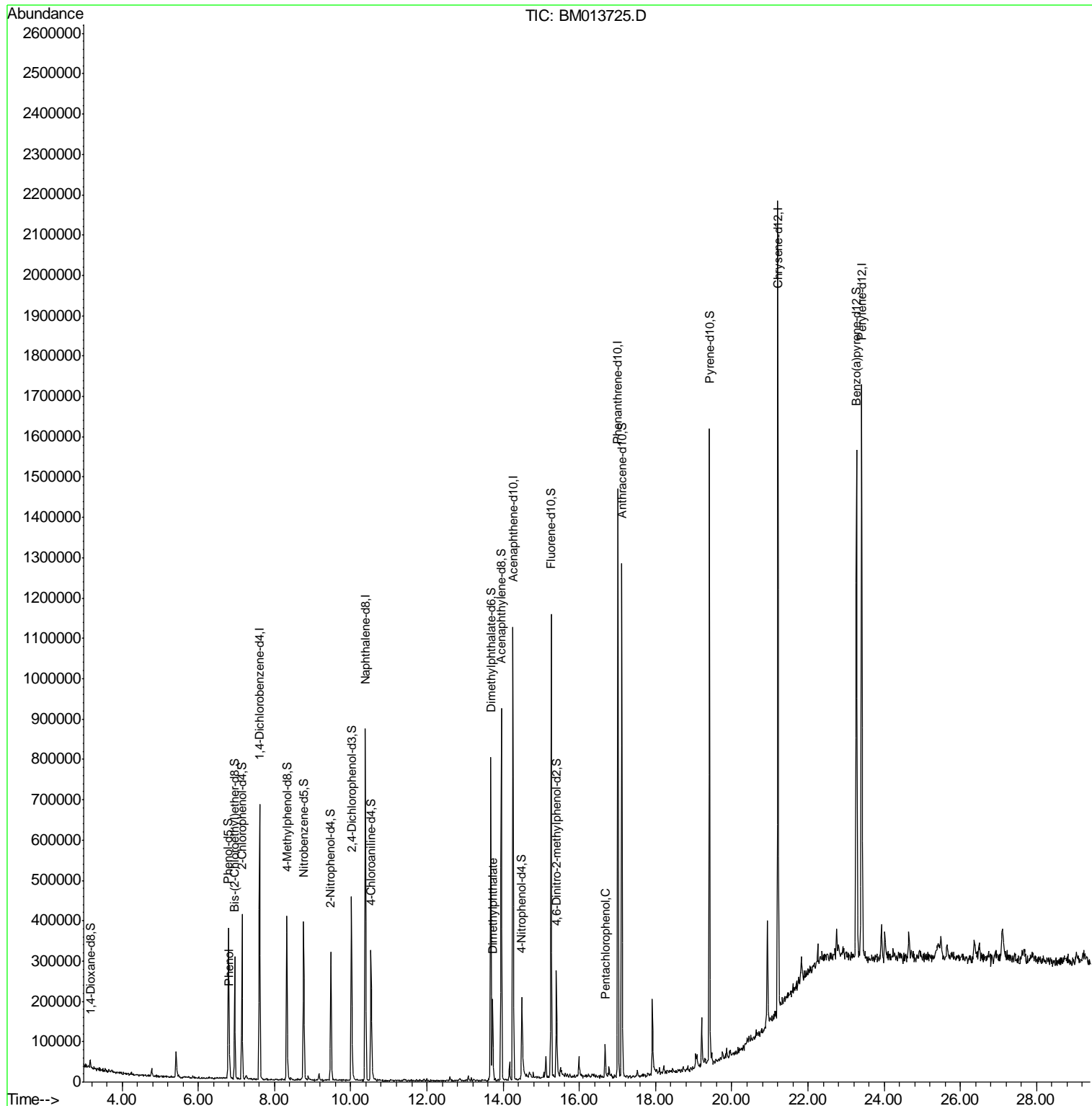
				Ovalue	
6) Phenol	6.82	94	20694	1.571	ng/ul# 84
44) Dimethylphthalate	13.73	163	125152	4.268	ng/ul 97
68) Pentachlorophenol	16.68	266	15359	2.822	ng/ul 91

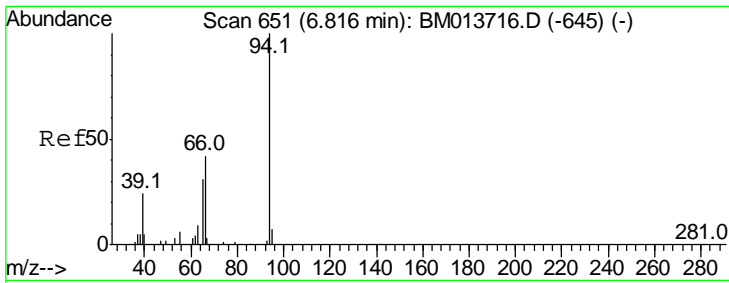
(#) = qualifier out of range (m) = manual integration (+) = signals summed

Data Path : Z:\HPCHEM1\BNA M\DATA\BM012218\
 Data File : BM013725.D
 Acq On : 23 Jan 2018 10:22
 Operator : SJ/JU
 Sample : J1174-03
 Misc :
 ALS Vial : 41 Sample Multiplier: 1

Instrument :
 BNA_M
 ClientSampleId :

Quant Time: Jan 23 12:42:42 2018
 Quant Method : Z:\HPCHEM1\BNA M\METHODS\SOM-EPA-BM011018.M
 Quant Title : SVOA CALIBRATION
 QLast Update : Tue Jan 23 06:05:57 2018
 Response via : Initial Calibration

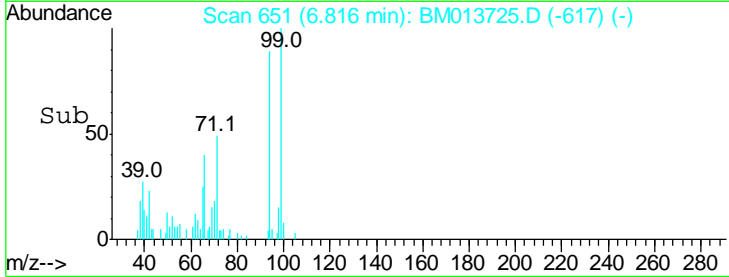
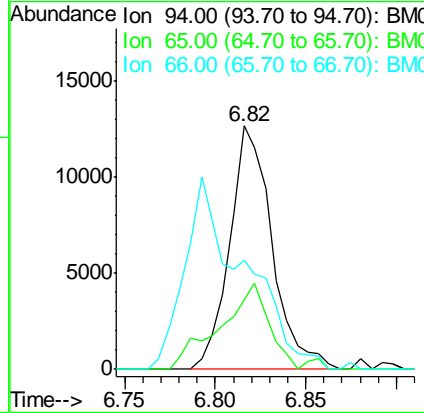
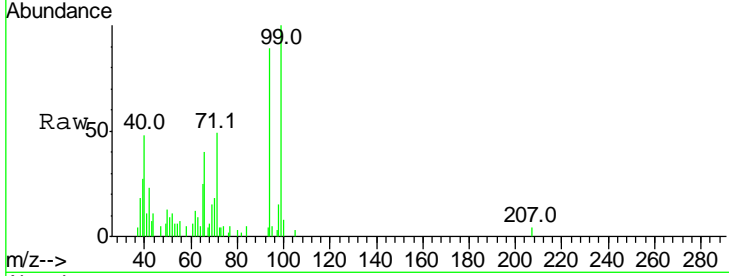




#6
 Phenol
 Concen: 1.571 ng/ul
 RT: 6.82 min Scan# 651
 Delta R.T. -0.00 min
 Lab File: BM013725.D
 Acq: 23 Jan 2018 10:22

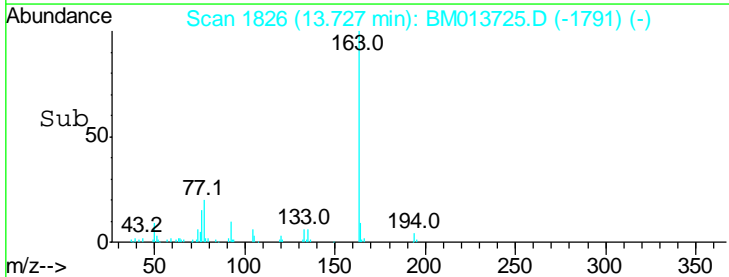
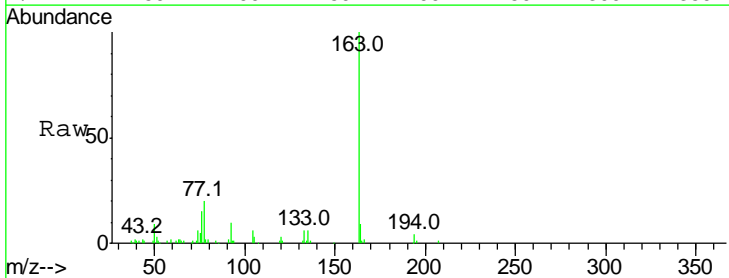
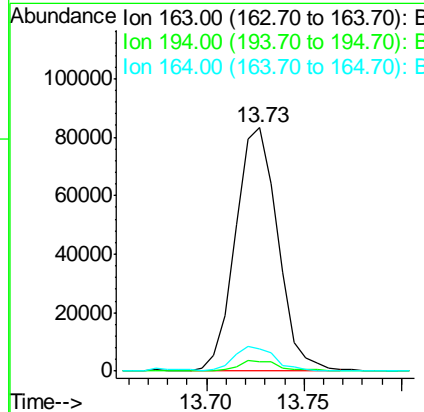
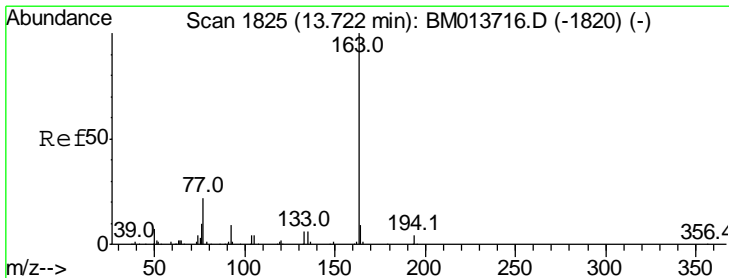
Instrument :
 BNA_M
 ClientSampled :

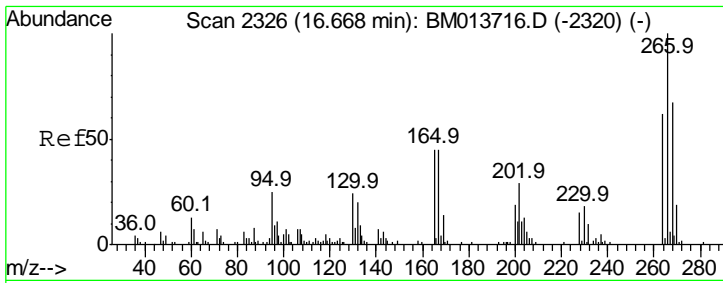
Tgt Ion	Resp	Lower	Upper
94	100		
65	28.4	28.2	42.4
66	44.7	47.2	70.8#



#44
 Dimethylphthalate
 Concen: 4.268 ng/ul
 RT: 13.73 min Scan# 1826
 Delta R.T. 0.01 min
 Lab File: BM013725.D
 Acq: 23 Jan 2018 10:22

Tgt Ion	Resp	Lower	Upper
163	100		
194	3.7	3.5	5.3
164	9.1	8.2	12.4





#68
 Pentachlorophenol
 Concen: 2.822 ng/ul
 RT: 16.68 min Scan# 2328
 Delta R.T. 0.01 min
 Lab File: BM013725.D
 Acq: 23 Jan 2018 10:22

Instrument :
 BNA_M
 ClientSampled :

Tot Ion: 266 Resp: 15359

Ion	Ratio	Lower	Upper
266	100		
264	51.0	49.3	73.9
268	62.7	52.6	78.8

