

Data Path : Z:\HPCHEM1\BNA M\DATA\BM012218\
 Data File : BM013707.D
 Acq On : 22 Jan 2018 22:59
 Operator : SJ/JU
 Sample : J1220-09
 Misc :
 ALS Vial : 23 Sample Multiplier: 1

Instrument :
 BNA_M
ClientSampled :
 F6A11

Manual Integrations
APPROVED
 Sohil
 1/23/2018 12:49:47 PM

Quant Time: Jan 23 02:59:58 2018
 Quant Method : Z:\HPCHEM1\BNA M\METHODS\SOM-EPA-BM011018.M
 Quant Title : SVOA CALIBRATION
 QLast Update : Tue Jan 23 00:52:14 2018
 Response via : Initial Calibration

| Internal Standards | R.T. | QIon | Response | Conc | Units | Dev(Min) |
|---------------------------|-------|------|----------|-------|-------|----------|
| 1) 1,4-Dichlorobenzene-d4 | 7.61 | 152 | 130036 | 20.00 | ng/ul | 0.00 |
| 18) Naphthalene-d8 | 10.39 | 136 | 525285 | 20.00 | ng/ul | 0.00 |
| 35) Acenaphthene-d10 | 14.26 | 164 | 280646 | 20.00 | ng/ul | 0.00 |
| 61) Phenanthrene-d10 | 17.02 | 188 | 648630 | 20.00 | ng/ul | 0.00 |
| 75) Chrysene-d12 | 21.21 | 240 | 776877 | 20.00 | ng/ul | 0.00 |
| 83) Perylene-d12 | 23.41 | 264 | 799803 | 20.00 | ng/ul | 0.00 |

System Monitoring Compounds

| | | | | | | |
|--------------------------------|-------|-----|---------|-------|-------|------|
| 3) 1,4-Dioxane-d8 | 3.16 | 96 | 18929m | 5.75 | ng/uL | 0.00 |
| 5) Phenol-d5 | 6.79 | 99 | 335721 | 33.63 | ng/ul | 0.00 |
| 7) Bis-(2-Chloroethyl)ether-d | 6.95 | 67 | 203961 | 33.72 | ng/ul | 0.00 |
| 9) 2-Chlorophenol-d4 | 7.15 | 132 | 286064 | 35.17 | ng/ul | 0.00 |
| 13) 4-Methylphenol-d8 | 8.32 | 113 | 288494 | 37.59 | ng/ul | 0.00 |
| 19) Nitrobenzene-d5 | 8.76 | 128 | 149171 | 36.60 | ng/ul | 0.00 |
| 22) 2-Nitrophenol-d4 | 9.48 | 143 | 159643 | 37.07 | ng/ul | 0.00 |
| 26) 2,4-Dichlorophenol-d3 | 10.02 | 165 | 285295 | 34.29 | ng/ul | 0.00 |
| 29) 4-Chloroaniline-d4 | 10.53 | 131 | 355633 | 49.26 | ng/ul | 0.00 |
| 43) Dimethylphthalate-d6 | 13.68 | 166 | 864930 | 37.39 | ng/ul | 0.00 |
| 46) Acenaphthylene-d8 | 13.95 | 160 | 1122394 | 38.05 | ng/ul | 0.00 |
| 51) 4-Nitrophenol-d4 | 14.49 | 143 | 110817 | 29.48 | ng/ul | 0.00 |
| 57) Fluorene-d10 | 15.26 | 176 | 756410 | 37.19 | ng/ul | 0.00 |
| 62) 4,6-Dinitro-2-methylphenol | 15.40 | 200 | 117721 | 30.15 | ng/ul | 0.00 |
| 70) Anthracene-d10 | 17.11 | 188 | 1186592 | 37.56 | ng/ul | 0.00 |
| 76) Pyrene-d10 | 19.42 | 212 | 1385655 | 38.31 | ng/ul | 0.00 |
| 87) Benzo(a)pyrene-d12 | 23.27 | 264 | 1461216 | 39.75 | ng/ul | 0.00 |

Target Compounds

| | | | | | Ovalue |
|-----------------------|-------|-----|--------|--------|----------|
| 6) Phenol | 6.82 | 94 | 60622 | 6.055 | ng/ul 93 |
| 44) Dimethylphthalate | 13.73 | 163 | 232744 | 10.234 | ng/ul 98 |

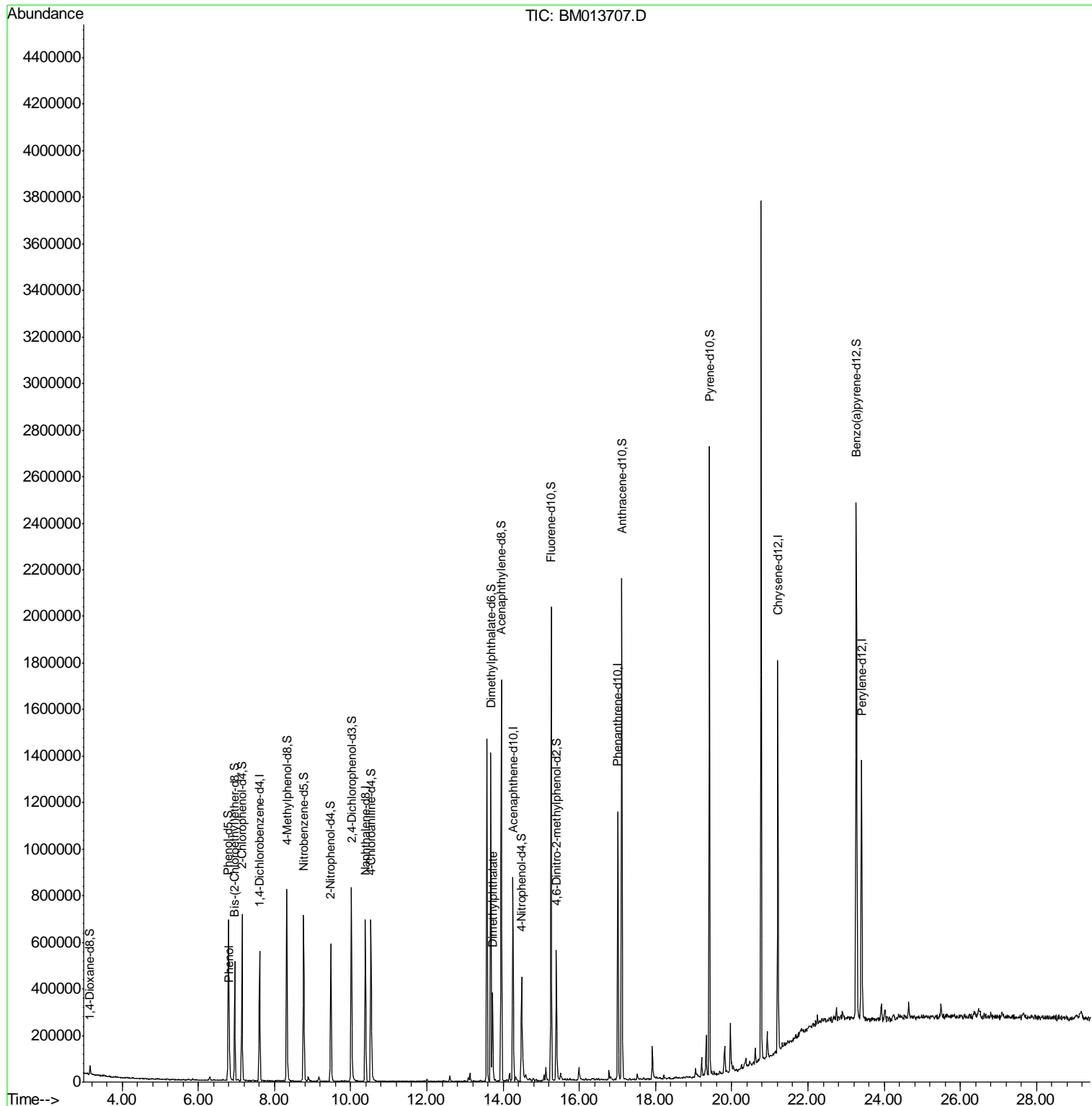
(#) = qualifier out of range (m) = manual integration (+) = signals summed

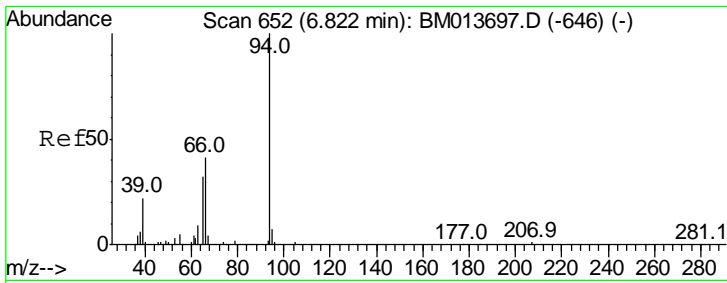
Data Path : Z:\HPCHEM1\BNA M\DATA\BM012218\
 Data File : BM013707.D
 Acq On : 22 Jan 2018 22:59
 Operator : SJ/JU
 Sample : J1220-09
 Misc :
 ALS Vial : 23 Sample Multiplier: 1

Instrument :
 BNA_M
 ClientSampled :
 F6A11

Manual Integrations
 APPROVED
 Sohil
 1/23/2018 12:49:47 PM

Quant Time: Jan 23 02:59:58 2018
 Quant Method : Z:\HPCHEM1\BNA M\METHODS\SOM-EPA-BM011018.M
 Quant Title : SVOA CALIBRATION
 QLast Update : Tue Jan 23 00:52:14 2018
 Response via : Initial Calibration





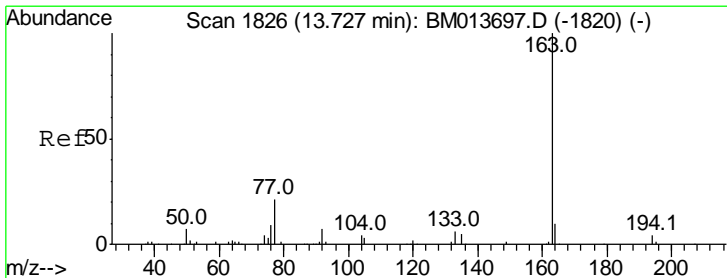
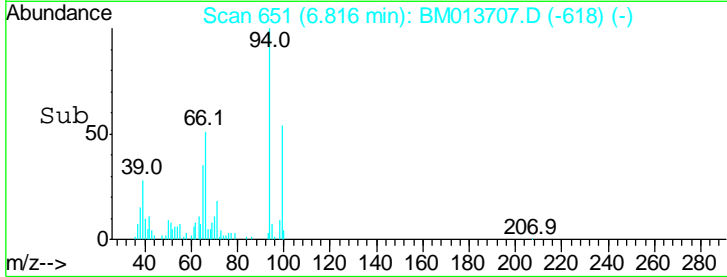
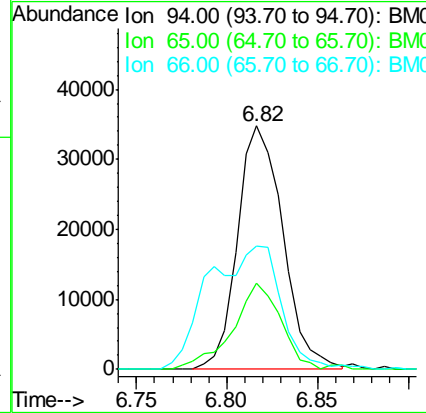
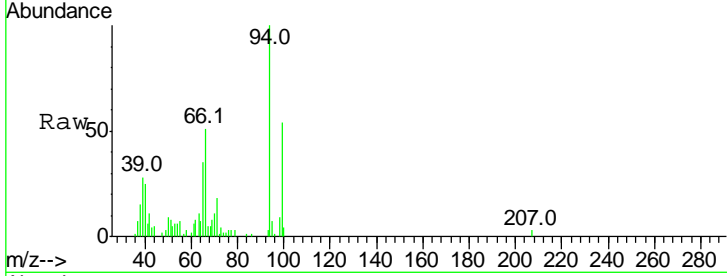
#6
 Phenol
 Concen: 6.055 ng/ul
 RT: 6.82 min Scan# 651
 Delta R.T. -0.01 min
 Lab File: BM013707.D
 Acq: 22 Jan 2018 22:59

Instrument :
 BNA_M
ClientSampled :
 F6A11

| Tgt Ion | Ratio | Lower | Upper |
|---------|-------|-------|-------|
| 94 | 100 | | |
| 65 | 35.3 | 28.2 | 42.4 |
| 66 | 50.9 | 47.2 | 70.8 |

Manual Integrations
APPROVED

Sohil
 1/23/2018 12:49:47 PM



#44
 Dimethylphthalate
 Concen: 10.234 ng/ul
 RT: 13.73 min Scan# 1826
 Delta R.T. 0.00 min
 Lab File: BM013707.D
 Acq: 22 Jan 2018 22:59

| Tgt Ion | Ratio | Lower | Upper |
|---------|-------|-------|-------|
| 163 | 100 | | |
| 194 | 4.2 | 3.5 | 5.3 |
| 164 | 9.2 | 8.2 | 12.4 |

