

Data Path : Z:\HPCHEM1\BNA M\DATA\BM012218\
 Data File : BM013708.D
 Acq On : 22 Jan 2018 23:35
 Operator : SJ/JU
 Sample : J1174-02
 Misc :
 ALS Vial : 24 Sample Multiplier: 1

Instrument :
 BNA_M
 ClientSampled :
 F6A01

Manual Integrations
 APPROVED

Sohil
 1/23/2018 12:49:50 PM

Quant Time: Jan 23 03:04:57 2018
 Quant Method : Z:\HPCHEM1\BNA M\METHODS\SOM-EPA-BM011018.M
 Quant Title : SVOA CALIBRATION
 QLast Update : Tue Jan 23 00:52:14 2018
 Response via : Initial Calibration

Internal Standards	R.T.	QIon	Response	Conc	Units	Dev(Min)
1) 1,4-Dichlorobenzene-d4	7.61	152	132898	20.00	ng/ul	0.00
18) Naphthalene-d8	10.39	136	511664	20.00	ng/ul	0.00
35) Acenaphthene-d10	14.26	164	286201	20.00	ng/ul	0.00
61) Phenanthrene-d10	17.01	188	645762	20.00	ng/ul	0.00
75) Chrysene-d12	21.21	240	752367	20.00	ng/ul	0.00
83) Perylene-d12	23.41	264	771559	20.00	ng/ul	0.00

System Monitoring Compounds

3) 1,4-Dioxane-d8	3.16	96	9420	2.80	ng/uL	0.00
5) Phenol-d5	6.79	99	200995	19.70	ng/ul	0.00
7) Bis-(2-Chloroethyl)ether-d	6.95	67	125586	20.32	ng/ul	0.00
9) 2-Chlorophenol-d4	7.15	132	172313	20.73	ng/ul	0.00
13) 4-Methylphenol-d8	8.32	113	142111	18.12	ng/ul	0.00
19) Nitrobenzene-d5	8.77	128	86605	21.81	ng/ul	0.00
22) 2-Nitrophenol-d4	9.48	143	95705	22.81	ng/ul	0.00
26) 2,4-Dichlorophenol-d3	10.02	165	161032	19.87	ng/ul	0.00
29) 4-Chloroaniline-d4	10.53	131	198040	28.16	ng/ul	0.00
43) Dimethylphthalate-d6	13.68	166	538455	22.83	ng/ul	0.00
46) Acenaphthylene-d8	13.95	160	655978	21.81	ng/ul	0.00
51) 4-Nitrophenol-d4	14.49	143	61070m	15.93	ng/ul	0.00
57) Fluorene-d10	15.26	176	457973	22.08	ng/ul	0.00
62) 4,6-Dinitro-2-methylphenol	15.40	200	63827	16.42	ng/ul	0.00
70) Anthracene-d10	17.11	188	744967	23.68	ng/ul	0.00
76) Pyrene-d10	19.42	212	870412	24.85	ng/ul	0.00
87) Benzo(a)pyrene-d12	23.27	264	899396	25.36	ng/ul	0.00

Target Compounds

Target Compounds	R.T.	QIon	Response	Conc	Units	Ovalue
6) Phenol	6.82	94	26791	2.618	ng/ul	95
44) Dimethylphthalate	13.73	163	156235	6.737	ng/ul	98

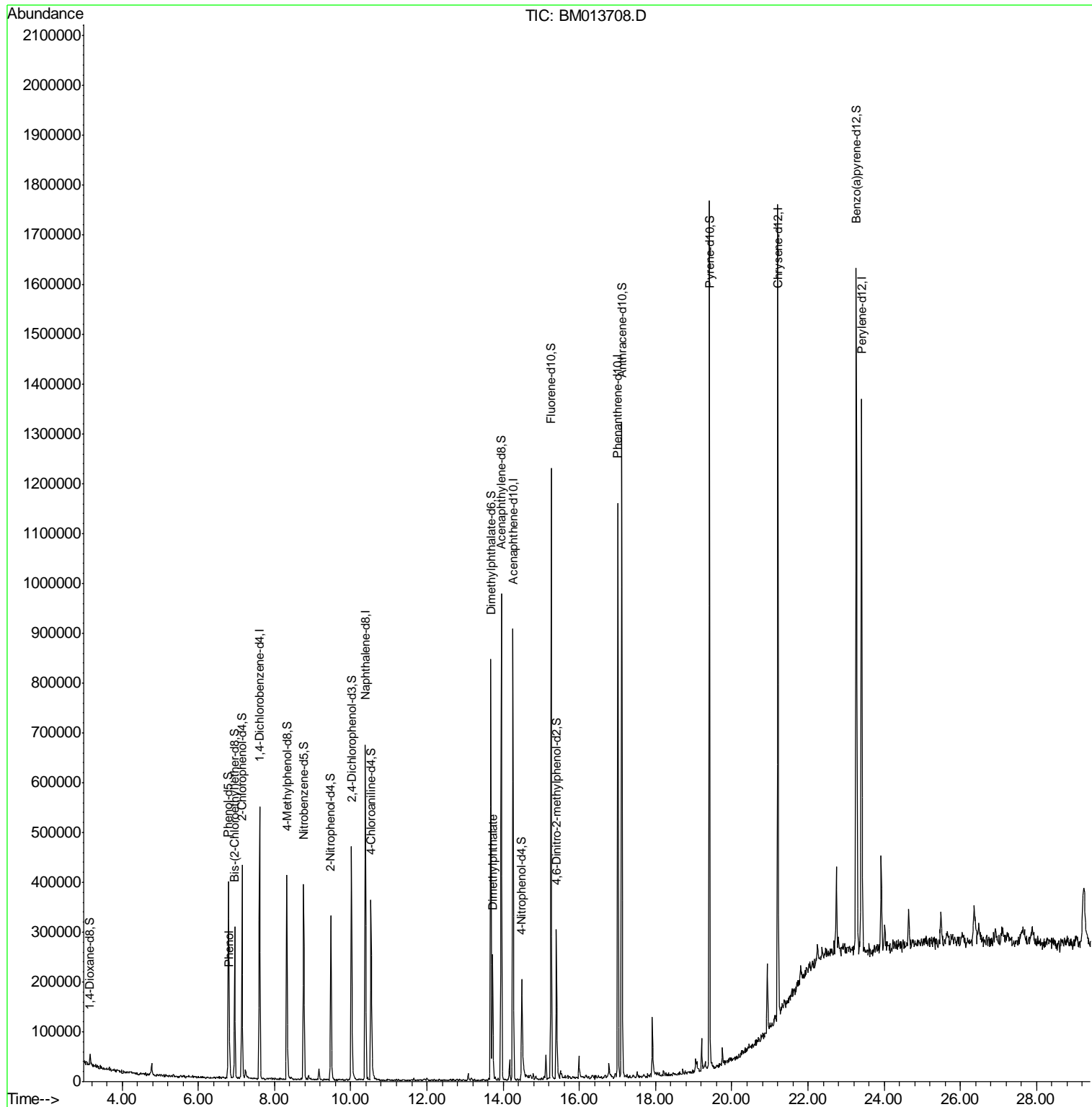
(#) = qualifier out of range (m) = manual integration (+) = signals summed

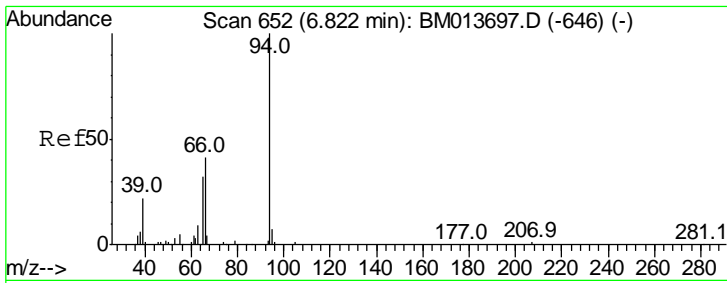
Data Path : Z:\HPCHEM1\BNA M\DATA\BM012218\
 Data File : BM013708.D
 Acq On : 22 Jan 2018 23:35
 Operator : SJ/JU
 Sample : J1174-02
 Misc :
 ALS Vial : 24 Sample Multiplier: 1

Instrument :
 BNA_M
 Client Sampled :
 F6A01

Manual Integrations
APPROVED
 Sohil
 1/23/2018 12:49:50 PM

Quant Time: Jan 23 03:04:57 2018
 Quant Method : Z:\HPCHEM1\BNA M\METHODS\SOM-EPA-BM011018.M
 Quant Title : SVOA CALIBRATION
 QLast Update : Tue Jan 23 00:52:14 2018
 Response via : Initial Calibration





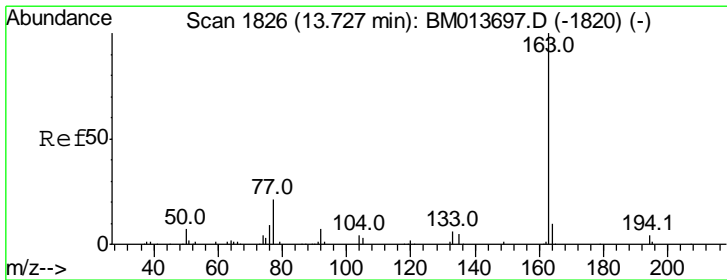
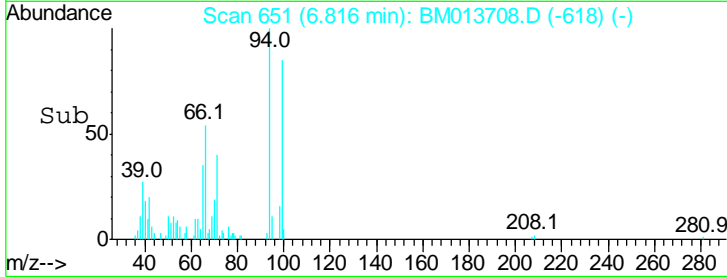
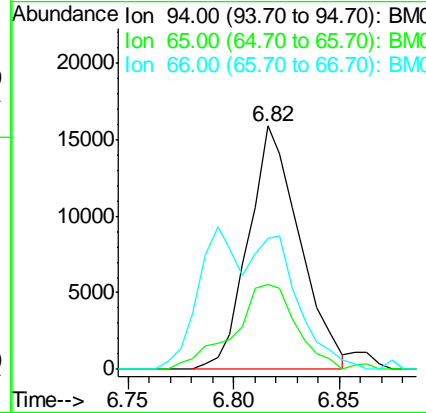
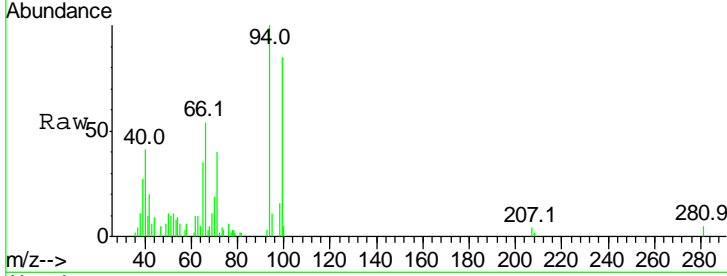
#6
 Phenol
 Concen: 2.618 ng/ul
 RT: 6.82 min Scan# 651
 Delta R.T. -0.01 min
 Lab File: BM013708.D
 Acq: 22 Jan 2018 23:35

Instrument :
 BNA_M
ClientSampled :
 F6A01

Tgt Ion	Ratio	Lower	Upper
94	100		
65	34.9	28.2	42.4
66	53.6	47.2	70.8

Manual Integrations
APPROVED

Sohil
 1/23/2018 12:49:50 PM



#44
 Dimethylphthalate
 Concen: 6.737 ng/ul
 RT: 13.73 min Scan# 1826
 Delta R.T. -0.00 min
 Lab File: BM013708.D
 Acq: 22 Jan 2018 23:35

Tgt Ion	Ratio	Lower	Upper
163	100		
194	4.3	3.5	5.3
164	9.5	8.2	12.4

