

Data Path : Z:\HPCHEM1\BNA M\DATA\BM012218\
 Data File : BM013721.D
 Acq On : 23 Jan 2018 07:55
 Operator : SJ/JU
 Sample : J1220-04
 Misc :
 ALS Vial : 37 Sample Multiplier: 1

Instrument :
 BNA_M
 ClientSampleId :
 F6A06

Quant Time: Jan 23 14:38:04 2018
 Quant Method : Z:\HPCHEM1\BNA M\METHODS\SOM-EPA-BM011018.M
 Quant Title : SVOA CALIBRATION
 QLast Update : Tue Jan 23 06:05:57 2018
 Response via : Initial Calibration

Internal Standards	R.T.	QIon	Response	Conc	Units	Dev(Min)
1) 1,4-Dichlorobenzene-d4	7.61	152	148226	20.00	ng/ul	0.00
18) Naphthalene-d8	10.39	136	594734	20.00	ng/ul	0.00
35) Acenaphthene-d10	14.26	164	322428	20.00	ng/ul	0.00
61) Phenanthrene-d10	17.02	188	708427	20.00	ng/ul	0.00
75) Chrysene-d12	21.21	240	813624	20.00	ng/ul	0.00
83) Perylene-d12	23.41	264	845524	20.00	ng/ul	0.00

System Monitoring Compounds

3) 1,4-Dioxane-d8	3.16	96	11122	2.97	ng/uL	0.00
5) Phenol-d5	6.79	99	205488	18.06	ng/ul	0.00
7) Bis-(2-Chloroethyl)ether-d	6.95	67	134113	19.45	ng/ul	0.00
9) 2-Chlorophenol-d4	7.15	132	179451	19.35	ng/ul	0.00
13) 4-Methylphenol-d8	8.32	113	142128	16.25	ng/ul	0.00
19) Nitrobenzene-d5	8.76	128	90614	19.64	ng/ul	0.00
22) 2-Nitrophenol-d4	9.48	143	96772	19.84	ng/ul	0.00
26) 2,4-Dichlorophenol-d3	10.02	165	182499	19.37	ng/ul	0.00
29) 4-Chloroaniline-d4	10.53	131	186547	22.82	ng/ul	0.00
43) Dimethylphthalate-d6	13.67	166	560284	21.08	ng/ul	0.00
46) Acenaphthylene-d8	13.95	160	704600	20.79	ng/ul	0.00
51) 4-Nitrophenol-d4	14.49	143	58385	13.52	ng/ul	0.00
57) Fluorene-d10	15.26	176	486391	20.81	ng/ul	0.00
62) 4,6-Dinitro-2-methylphenol	15.40	200	62752	14.72	ng/ul	0.00
70) Anthracene-d10	17.11	188	732234	21.22	ng/ul	0.00
76) Pyrene-d10	19.42	212	851596	22.48	ng/ul	0.00
87) Benzo(a)pyrene-d12	23.27	264	893471	22.99	ng/ul	0.00

Target Compounds

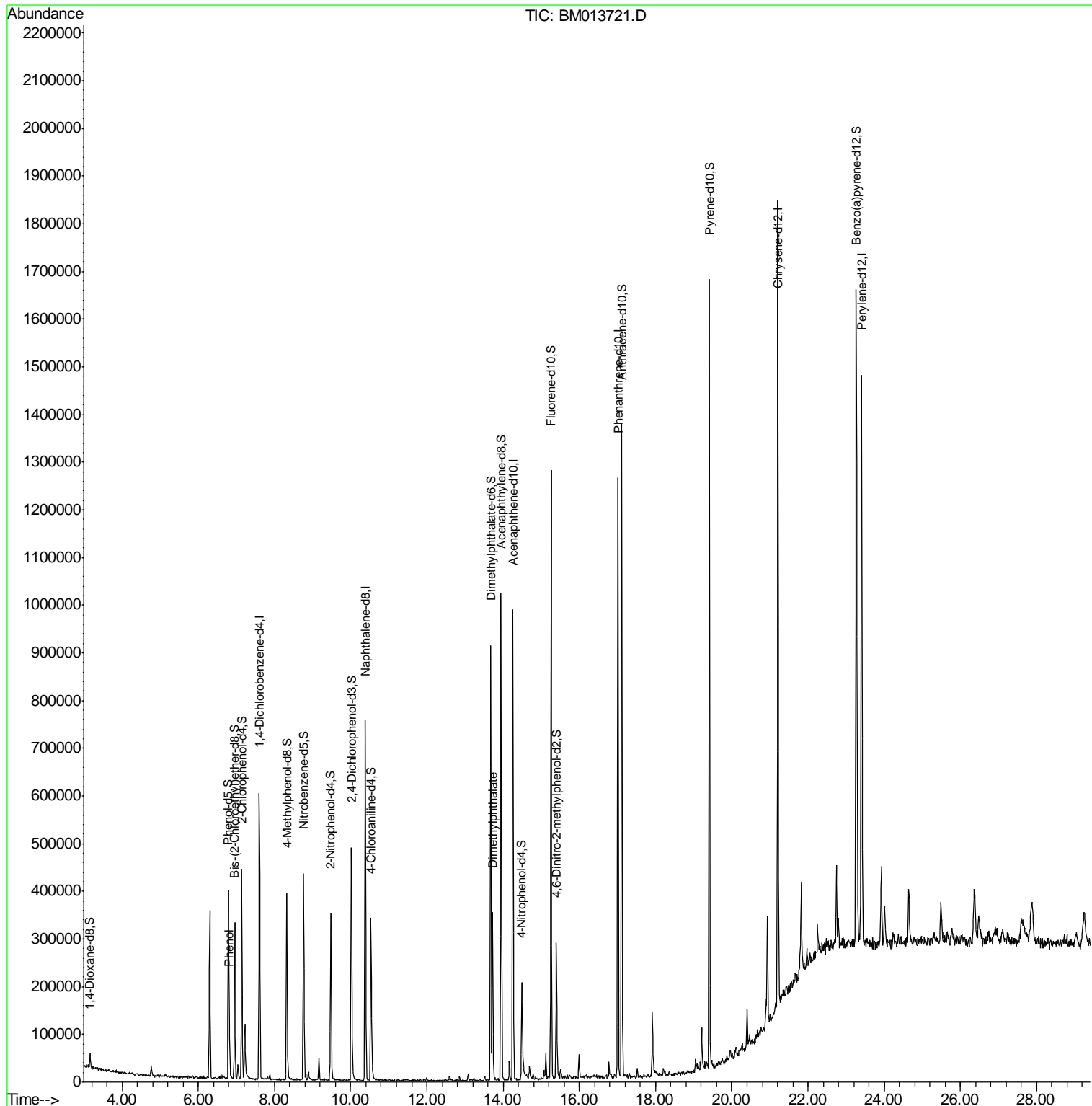
Target Compounds	R.T.	QIon	Response	Conc	Units	Ovalue
6) Phenol	6.82	94	39484	3.459	ng/ul	95
44) Dimethylphthalate	13.72	163	210793	8.068	ng/ul#	99

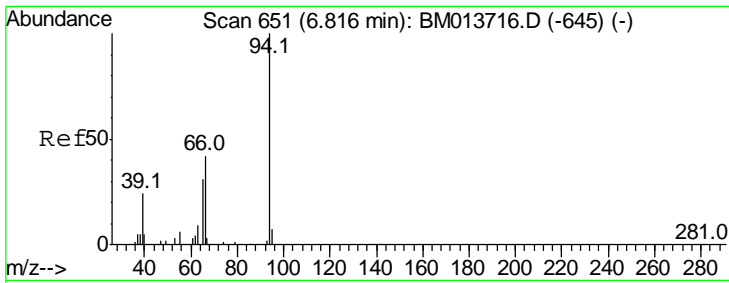
(#) = qualifier out of range (m) = manual integration (+) = signals summed

Data Path : Z:\HPCHEM1\BNA M\DATA\BM012218\
 Data File : BM013721.D
 Acq On : 23 Jan 2018 07:55
 Operator : SJ/JU
 Sample : J1220-04
 Misc :
 ALS Vial : 37 Sample Multiplier: 1

Instrument :
 BNA_M
 ClientSampled :
 F6A06

Quant Time: Jan 23 14:38:04 2018
 Quant Method : Z:\HPCHEM1\BNA M\METHODS\SOM-EPA-BM011018.M
 Quant Title : SVOA CALIBRATION
 QLast Update : Tue Jan 23 06:05:57 2018
 Response via : Initial Calibration

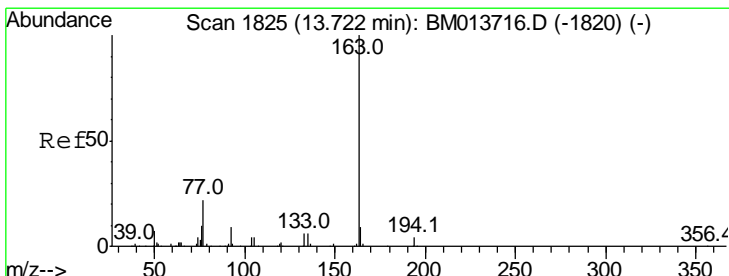
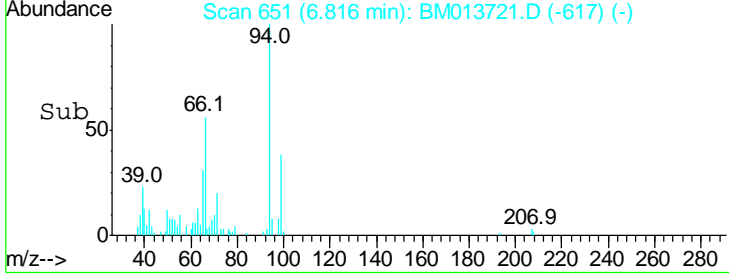
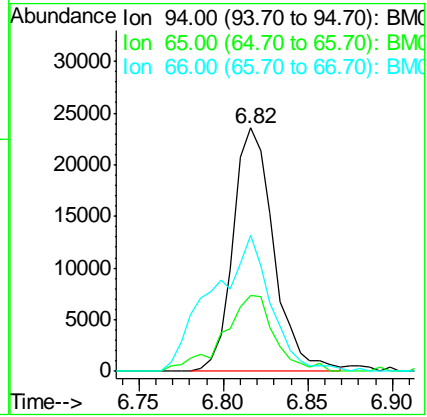
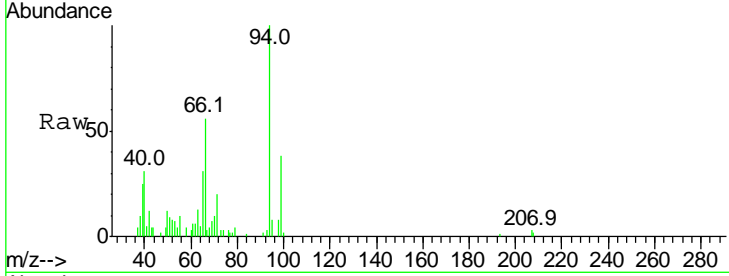




#6
 Phenol
 Concen: 3.459 ng/ul
 RT: 6.82 min Scan# 651
 Delta R.T. -0.00 min
 Lab File: BM013721.D
 Acq: 23 Jan 2018 07:55

Instrument :
 BNA_M
ClientSampled :
 F6A06

Tgt Ion	Resp	Lower	Upper
94	100		
65	31.2	28.2	42.4
66	55.8	47.2	70.8



#44
 Dimethylphthalate
 Concen: 8.068 ng/ul
 RT: 13.72 min Scan# 1825
 Delta R.T. -0.00 min
 Lab File: BM013721.D
 Acq: 23 Jan 2018 07:55

Tgt Ion	Resp	Lower	Upper
163	100		
194	3.2	3.5	5.3#
164	10.2	8.2	12.4

