

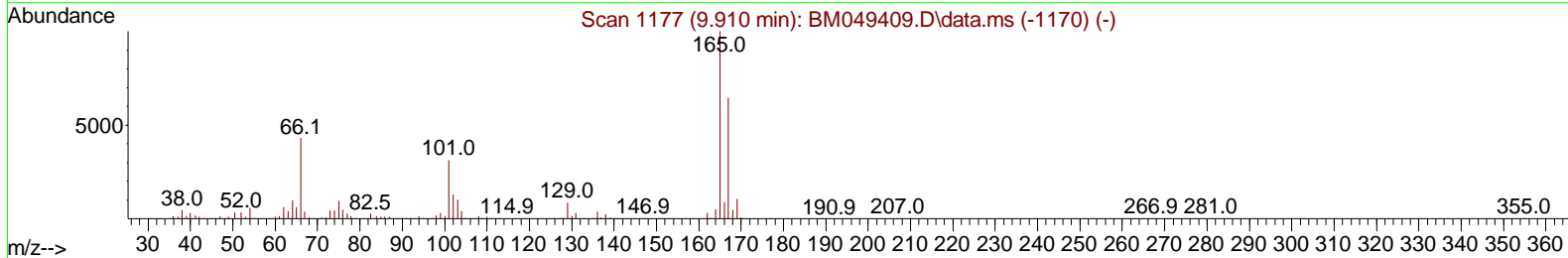
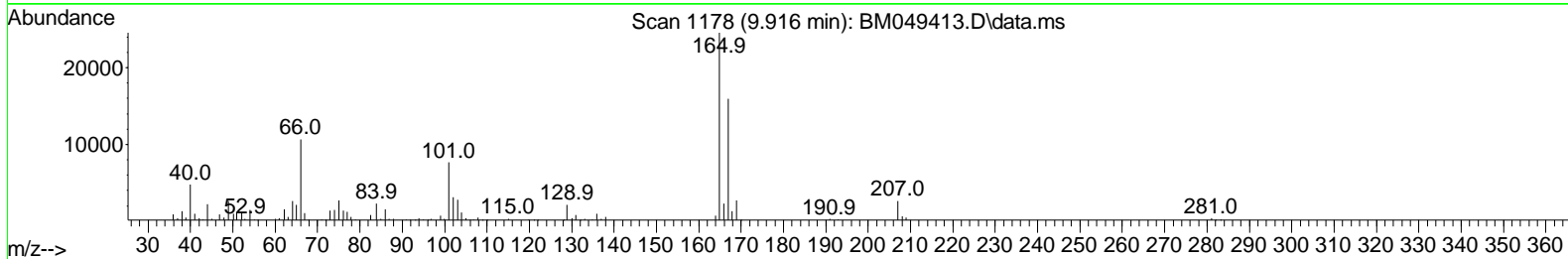
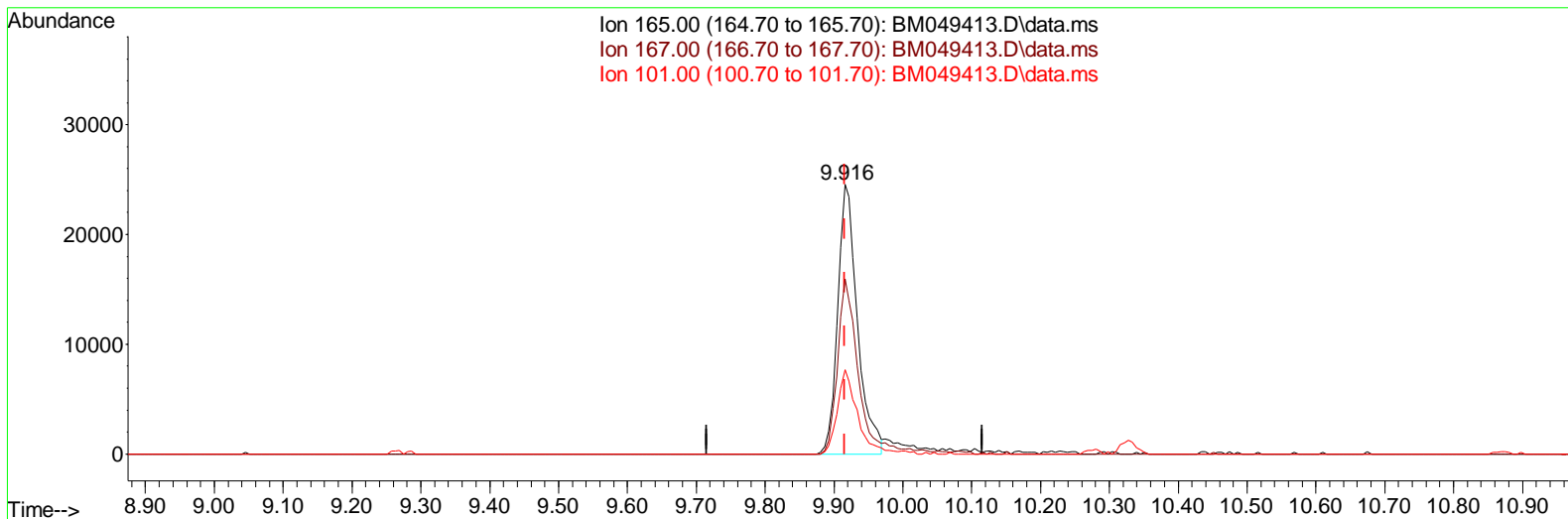
Data Path : Z:\svoasrv\HPCHEM1\BNA\_M\Data\BM012225\  
 Data File : BM049413.D  
 Acq On : 23 Jan 2025 10:59  
 Operator : RC/JU  
 Sample : Q1139-19DL 5X  
 Misc :  
 ALS Vial : 35 Sample Multiplier: 1

Instrument :  
 BNA\_M  
 ClientSampleId :  
 DCZJ6DL

Manual Integrations APPROVED

Quant Time: Jan 23 22:24:09 2025  
 Quant Method : Z:\svoasrv\HPCHEM1\BNA\_M\Methods\SFAM-EPA-BM011325.MA.M  
 Quant Title : SVOA CALIBRATION  
 QLast Update : Mon Jan 13 16:56:06 2025  
 Response via : Initial Calibration

Reviewed By :Yogesh Patel 01/24/2025  
 Supervised By :mohammad ahmed 01/24/2025



TIC: BM049413.D\data.ms

(28) 2,4-Dichlorophenol-d3 (S)

9.916min (-0.000) 3.20 ng/ul

response 48953

Ion	Exp%	Act%
165.00	100.00	100.00
167.00	63.10	64.89
101.00	30.40	31.27
0.00	0.00	0.00

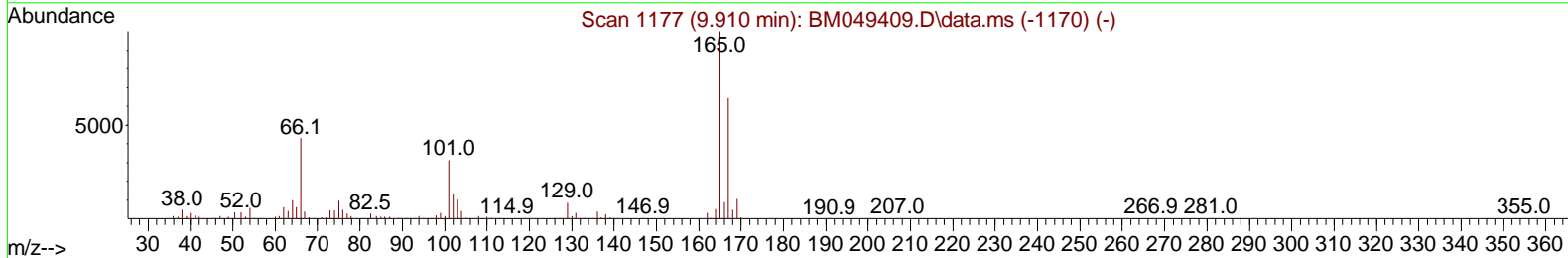
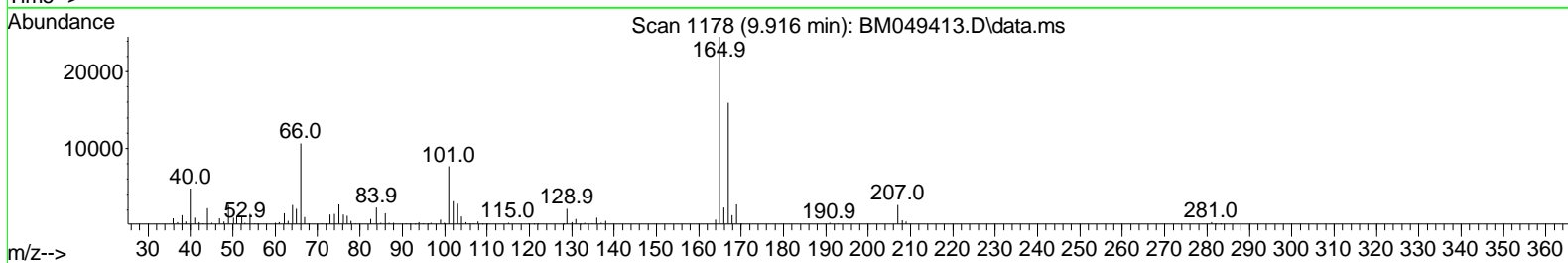
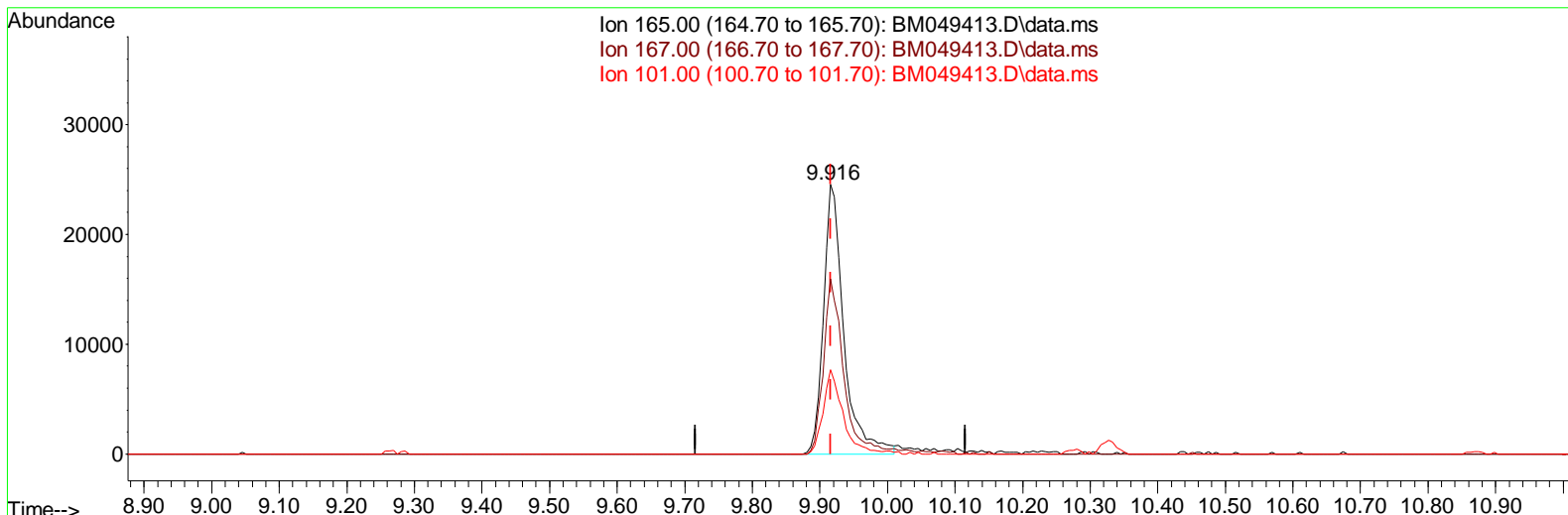
Data Path : Z:\svoasrv\HPCHEM1\BNA\_M\Data\BM012225\  
 Data File : BM049413.D  
 Acq On : 23 Jan 2025 10:59  
 Operator : RC/JU  
 Sample : Q1139-19DL 5X  
 Misc :  
 ALS Vial : 35 Sample Multiplier: 1

Instrument :  
 BNA\_M  
 ClientSampleId :  
 DCZJ6DL

Manual Integrations APPROVED

Quant Time: Jan 23 22:24:09 2025  
 Quant Method : Z:\svoasrv\HPCHEM1\BNA\_M\Methods\SFAM-EPA-BM011325.MA.M  
 Quant Title : SVOA CALIBRATION  
 QLast Update : Mon Jan 13 16:56:06 2025  
 Response via : Initial Calibration

Reviewed By :Yogesh Patel 01/24/2025  
 Supervised By :mohammad ahmed 01/24/2025



TIC: BM049413.D\data.ms

(28) 2,4-Dichlorophenol-d3 (S)

9.916min (-0.000) 3.36 ng/ul m

response 51397

Ion	Exp%	Act%
165.00	100.00	100.00
167.00	63.10	64.89
101.00	30.40	31.27
0.00	0.00	0.00

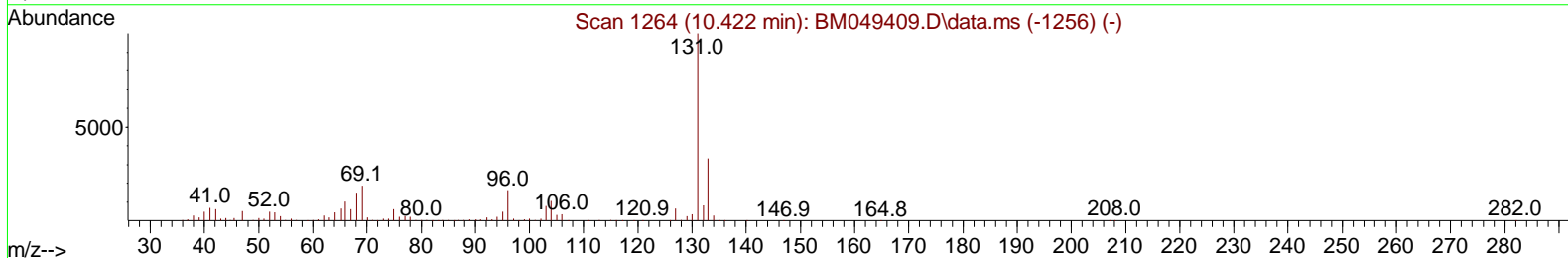
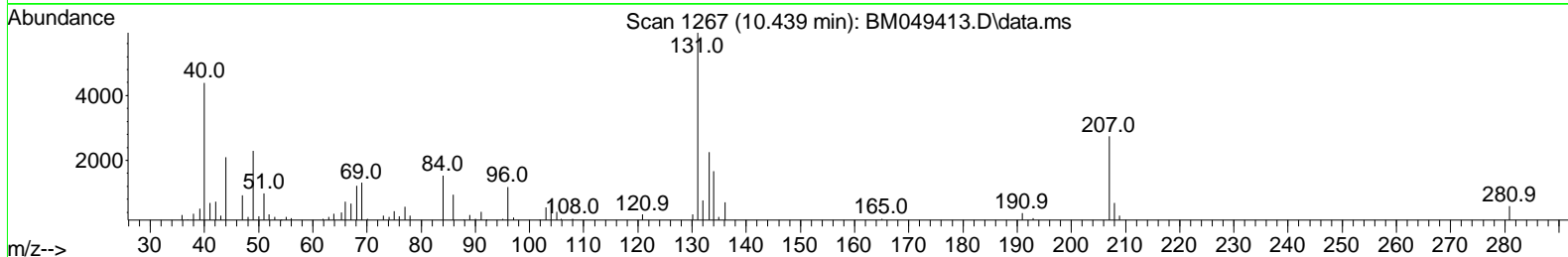
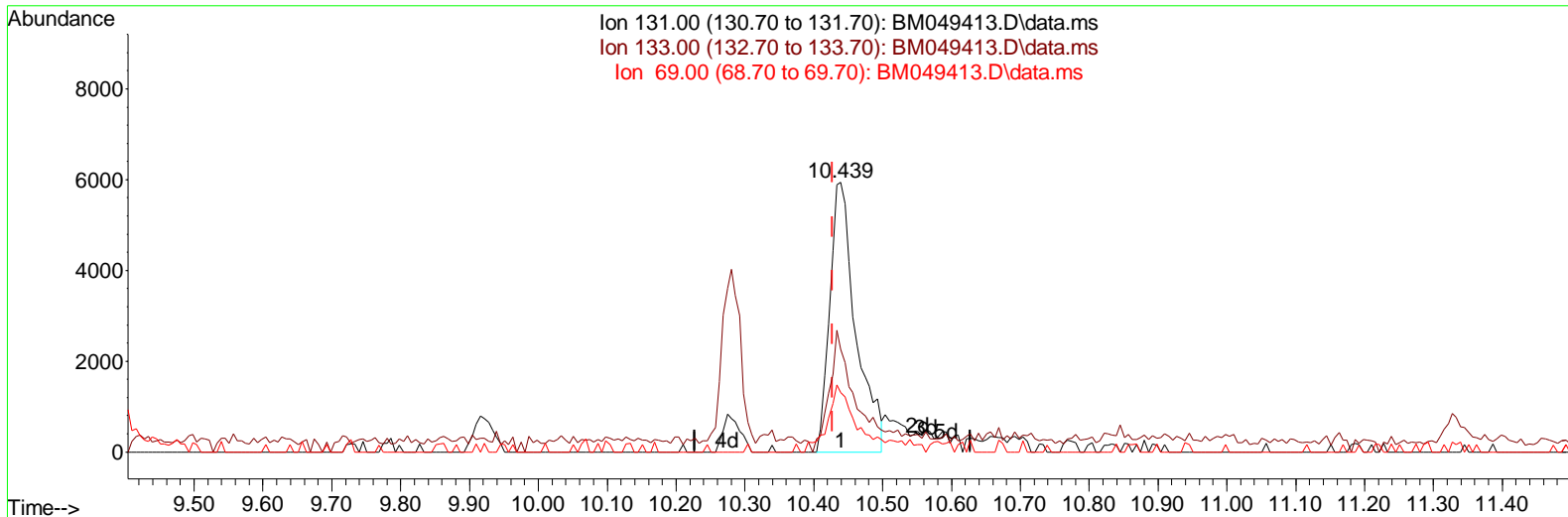
Data Path : Z:\svoasrv\HPCHEM1\BNA\_M\Data\BM012225\  
 Data File : BM049413.D  
 Acq On : 23 Jan 2025 10:59  
 Operator : RC/JU  
 Sample : Q1139-19DL 5X  
 Misc :  
 ALS Vial : 35 Sample Multiplier: 1

**Instrument :**  
 BNA\_M  
**ClientSampleId :**  
 DCZJ6DL

**Manual IntegrationsAPPROVED**

Quant Time: Jan 23 22:24:09 2025  
 Quant Method : Z:\svoasrv\HPCHEM1\BNA\_M\Methods\SFAM-EPA-BM011325.MA.M  
 Quant Title : SVOA CALIBRATION  
 QLast Update : Mon Jan 13 16:56:06 2025  
 Response via : Initial Calibration

Reviewed By :Yogesh Patel 01/24/2025  
 Supervised By :mohammad ahmed 01/24/2025



TIC: BM049413.D\data.ms

(31) 4-Chloroaniline-d4 (S)

10.439min (+ 0.012) 0.77 ng/ul

response 15584

Ion	Exp%	Act%
131.00	100.00	100.00
133.00	32.10	37.98
69.00	19.00	22.05
0.00	0.00	0.00

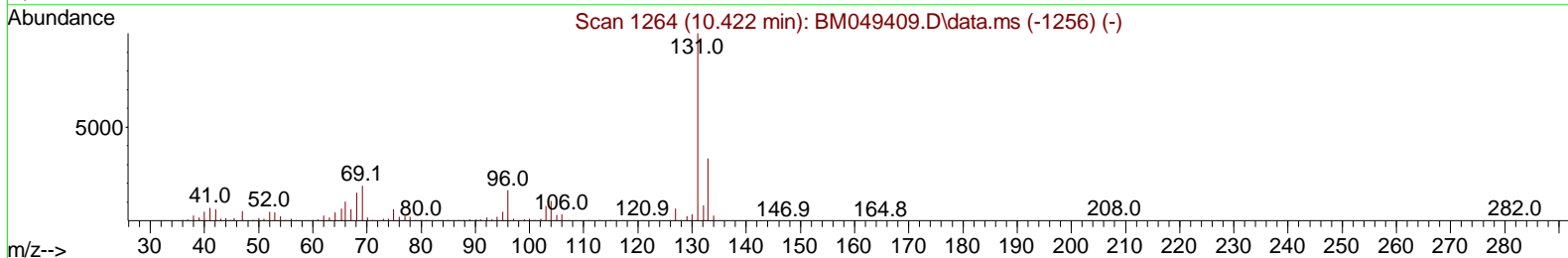
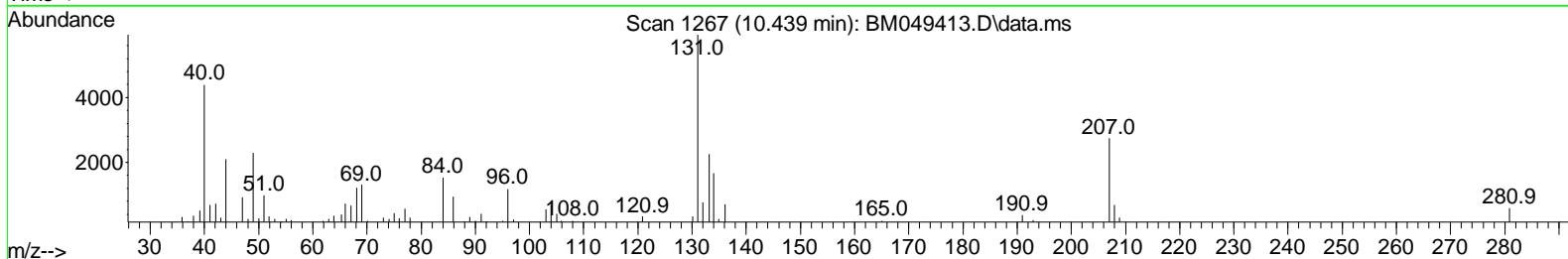
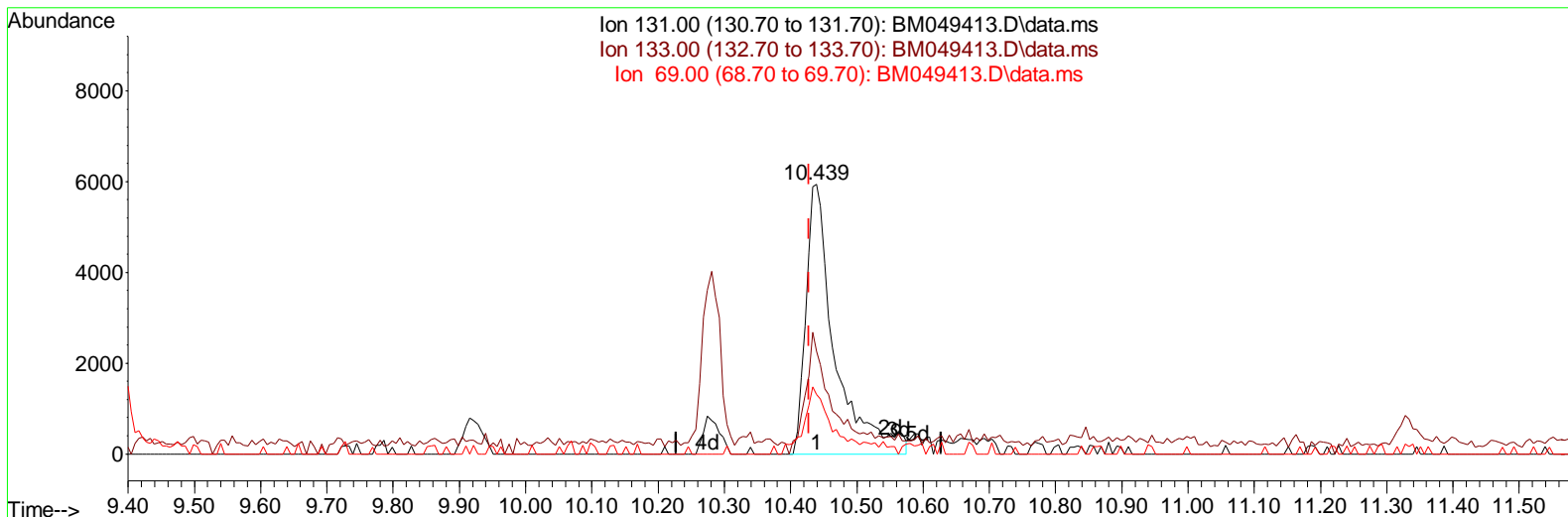
Data Path : Z:\svoasrv\HPCHEM1\BNA\_M\Data\BM012225\  
 Data File : BM049413.D  
 Acq On : 23 Jan 2025 10:59  
 Operator : RC/JU  
 Sample : Q1139-19DL 5X  
 Misc :  
 ALS Vial : 35 Sample Multiplier: 1

**Instrument :**  
 BNA\_M  
**ClientSampleId :**  
 DCZJ6DL

**Manual Integrations APPROVED**

Quant Time: Jan 23 22:24:09 2025  
 Quant Method : Z:\svoasrv\HPCHEM1\BNA\_M\Methods\SFAM-EPA-BM011325.MA.M  
 Quant Title : SVOA CALIBRATION  
 QLast Update : Mon Jan 13 16:56:06 2025  
 Response via : Initial Calibration

Reviewed By :Yogesh Patel 01/24/2025  
 Supervised By :mohammad ahmed 01/24/2025



TIC: BM049413.D\data.ms

(31) 4-Chloroaniline-d4 (S)

10.439min (+ 0.012) 0.89 ng/ul m

response 17975

Ion	Exp%	Act%
131.00	100.00	100.00
133.00	32.10	37.98
69.00	19.00	22.05
0.00	0.00	0.00

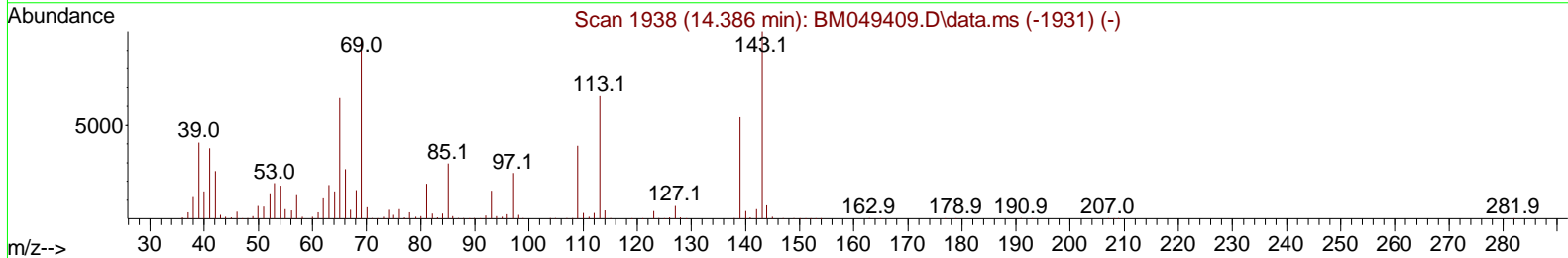
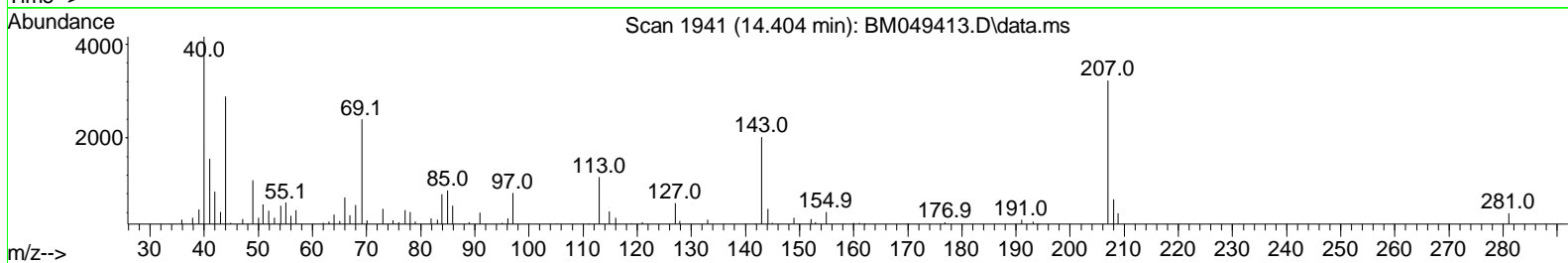
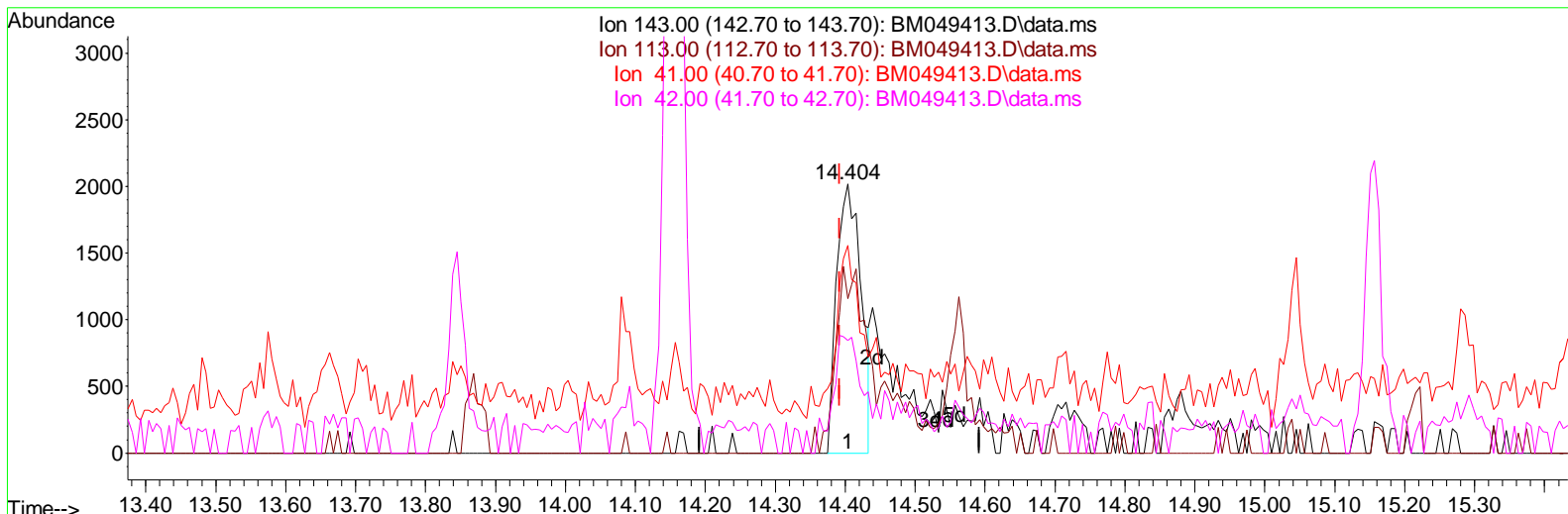
Data Path : Z:\svoasrv\HPCHEM1\BNA\_M\Data\BM012225\  
 Data File : BM049413.D  
 Acq On : 23 Jan 2025 10:59  
 Operator : RC/JU  
 Sample : Q1139-19DL 5X  
 Misc :  
 ALS Vial : 35 Sample Multiplier: 1

Instrument :  
 BNA\_M  
 ClientSampleId :  
 DCZJ6DL

Manual Integrations APPROVED

Quant Time: Jan 23 22:24:09 2025  
 Quant Method : Z:\svoasrv\HPCHEM1\BNA\_M\Methods\SFAM-EPA-BM011325.MA.M  
 Quant Title : SVOA CALIBRATION  
 QLast Update : Mon Jan 13 16:56:06 2025  
 Response via : Initial Calibration

Reviewed By :Yogesh Patel 01/24/2025  
 Supervised By :mohammad ahmed 01/24/2025



TIC: BM049413.D\data.ms

(54) 4-Nitrophenol-d4 (S)

14.404min (+ 0.012) 0.76 ng/ul

response 4950

Ion	Exp%	Act%
143.00	100.00	100.00
113.00	69.30	57.31
41.00	40.60	77.19#
42.00	26.30	41.79#

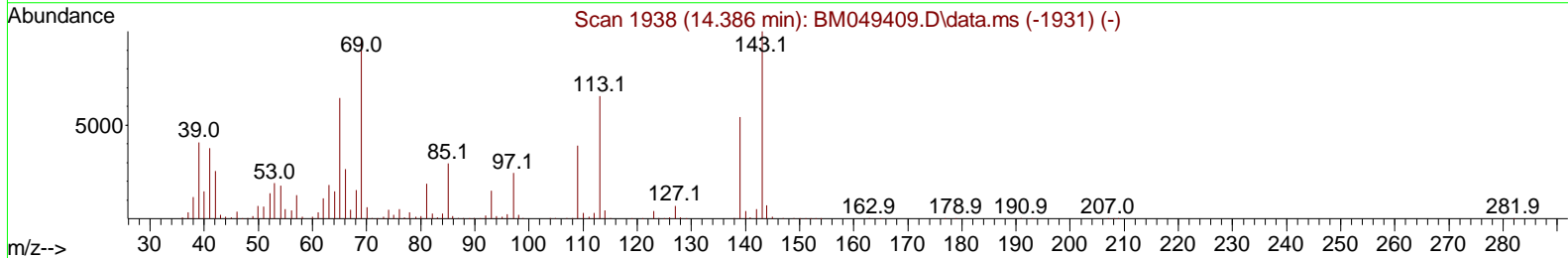
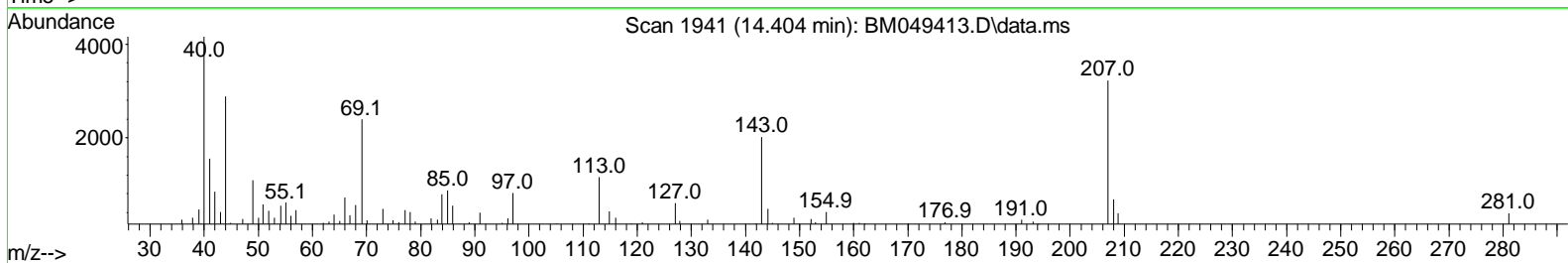
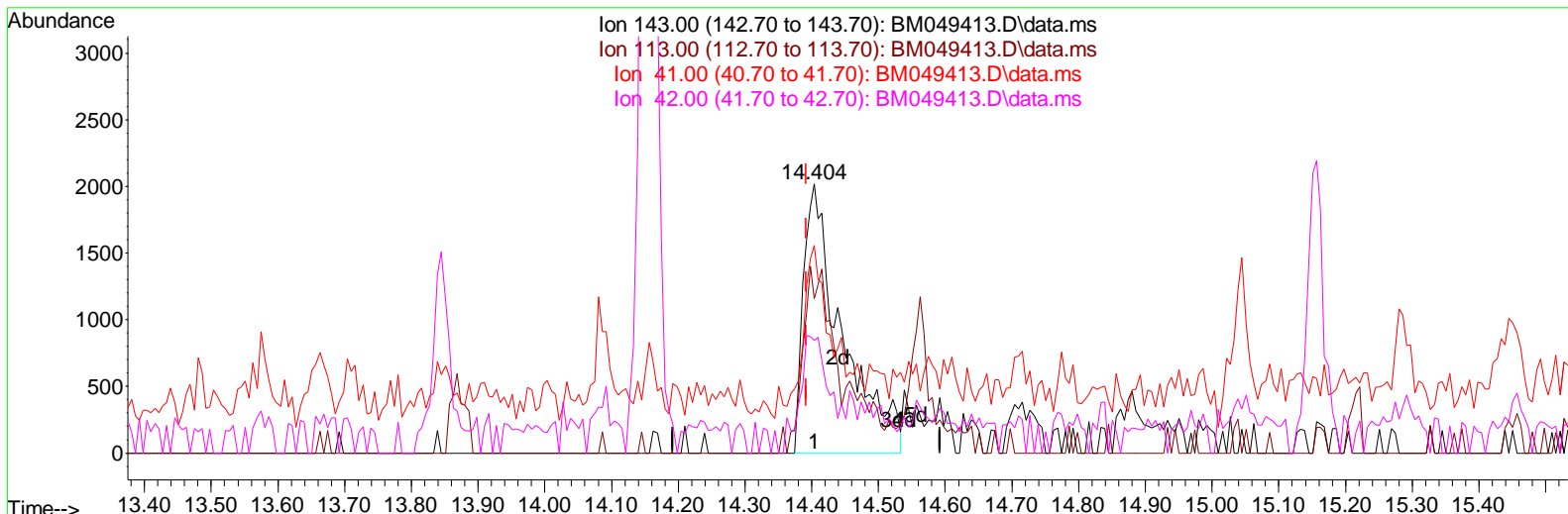
Data Path : Z:\svoasrv\HPCHEM1\BNA\_M\Data\BM012225\  
 Data File : BM049413.D  
 Acq On : 23 Jan 2025 10:59  
 Operator : RC/JU  
 Sample : Q1139-19DL 5X  
 Misc :  
 ALS Vial : 35 Sample Multiplier: 1

Instrument :  
 BNA\_M  
 ClientSampleId :  
 DCZJ6DL

Manual Integrations APPROVED

Reviewed By : Yogesh Patel 01/24/2025  
 Supervised By : mohammad ahmed 01/24/2025

Quant Time: Jan 23 22:24:09 2025  
 Quant Method : Z:\svoasrv\HPCHEM1\BNA\_M\Methods\SFAM-EPA-BM011325.MA.M  
 Quant Title : SVOA CALIBRATION  
 QLast Update : Mon Jan 13 16:56:06 2025  
 Response via : Initial Calibration



TIC: BM049413.D\data.ms

(54) 4-Nitrophenol-d4 (S)

14.404min (+ 0.012) 1.23 ng/ul m

response	8040	
Ion	Exp%	Act%
143.00	100.00	100.00
113.00	69.30	57.31
41.00	40.60	77.19#
42.00	26.30	41.79#

Data Path : Z:\svoasrv\HPCHEM1\BNA\_M\Data\BMO12225\  
 Data File : BMO49413.D  
 Acq On : 23 Jan 2025 10:59  
 Operator : RC/JU  
 Sample : Q1139-19DL 5X  
 Misc :  
 ALS Vial : 35 Sample Multiplier: 1

**Instrument :**  
 BNA\_M  
**ClientSampleId :**  
 DCZJ6DL

**Manual IntegrationsAPPROVED**

Reviewed By :Yogesh Patel 01/24/2025  
 Supervised By :mohammad ahmed 01/24/2025

Quant Time: Jan 23 22:26:02 2025  
 Quant Method : Z:\svoasrv\HPCHEM1\BNA\_M\Methods\SFAM-EPA-BMO11325.MA.M  
 Quant Title : SVOA CALI BRATI ON  
 QLast Update : Mon Jan 13 16:56:06 2025  
 Response via : Initial Calibration

Compound	R.T.	QI on	Response	Conc	Units	Dev(Min)
<b>Internal Standards</b>						
1) 1,4-Di chlorobenzene-d4	7.516	152	252278	20.000	ng/ul	0.00
20) Naphthalene-d8	10.280	136	880152	20.000	ng/ul	0.00
38) Acenaphthene-d10	14.157	164	529296	20.000	ng/ul	0.00
64) Phenanthrene-d10	16.909	188	1027247	20.000	ng/ul	0.00
79) Chrysene-d12	21.139	240	1152024	20.000	ng/ul	0.00
88) Perylene-d12	23.921	264	1207256	20.000	ng/ul	-0.01
<b>System Monitoring Compounds</b>						
3) 1,4-Dioxane-d8	3.122	96	5190	0.851	ng/uL	0.00
4) Pyridine-d5	3.528	84	16292	0.839	ng/ul	0.02
7) Phenol-d5	6.716	99	67729	3.198	ng/ul	0.00
9) Bis-(2-Chloroethyl)eth...	6.869	67	54562	3.869	ng/ul	0.00
11) 2-Chlorophenol-d4	7.057	132	58520	3.612	ng/ul	0.00
15) 4-Methylphenol-d8	8.234	113	49536	3.016	ng/ul	0.00
21) Nitrobenzene-d5	8.663	128	24805	3.696	ng/ul	0.00
24) 2-Nitrophenol-d4	9.381	143	23289	3.104	ng/ul	0.00
28) 2,4-Dichlorophenol-d3	9.916	165	51397m	3.357	ng/ul	0.00
31) 4-Chloroaniline-d4	10.439	131	17975m	0.892	ng/ul	0.01
46) Dimethylphthalate-d6	13.580	166	154191	3.914	ng/ul	0.00
49) Acenaphthylene-d8	13.845	160	169569	3.770	ng/ul	0.00
54) 4-Nitrophenol-d4	14.404	143	8040m	1.232	ng/ul	0.01
60) Fluorene-d10	15.157	176	125047	3.674	ng/ul	0.00
65) 4,6-Dinitro-2-methylph...	15.286	200	7790	1.190	ng/ul	0.00
73) Anthracene-d10	17.004	188	187739	3.697	ng/ul	-0.01
81) Pyrene-d10	19.309	212	179009	2.553	ng/ul	-0.01
92) Benzo(a)pyrene-d12	23.727	264	105175	1.623	ng/ul	-0.02
<b>Target Compounds</b>						
30) Naphthalene	10.328	128	69622	1.491	ng/ul	98
50) Acenaphthylene	13.874	152	138137	2.996	ng/ul	99
72) Phenanthrene	16.951	178	301667	5.282	ng/ul	99
74) Anthracene	17.039	178	642312	11.205	ng/ul	99
80) Fluoranthene	18.980	202	2796194	34.708	ng/ul	99
82) Pyrene	19.339	202	1984022	23.135	ng/ul	99
85) Benzo(a)anthracene	21.121	228	1584066	19.731	ng/ul	97
87) Chrysene	21.180	228	2762488	37.691	ng/ul	99
90) Benzo(b)fluoranthene	23.056	252	3712331	45.942	ng/ul	99
91) Benzo(k)fluoranthene	23.109	252	1093030	13.566	ng/ul	97
93) Benzo(a)pyrene	23.791	252	431514	5.912	ng/ul	96
94) Indeno(1,2,3-cd)pyrene	26.997	276	457478	5.464	ng/ul	97
95) Di benzo(a,h)anthracene	27.044	278	206340	3.026	ng/ul	94

(#) = qualifier out of range (m) = manual integration (+) = signals summed

Data Path : Z:\svoasrv\HPCHEM1\BNA\_M\Data\BM012225\  
 Data File : BM049413.D  
 Acq On : 23 Jan 2025 10:59  
 Operator : RC/JU  
 Sample : Q1139-19DL 5X  
 Misc :  
 ALS Vial : 35 Sample Multiplier: 1

**Instrument :**  
 BNA\_M  
**ClientSampleId :**  
 DCZJ6DL

**Manual Integrations APPROVED**  
 Reviewed By :Yogesh Patel 01/24/2025  
 Supervised By :mohammad ahmed 01/24/2025

Quant Time: Jan 23 22:26:02 2025  
 Quant Method : Z:\svoasrv\HPCHEM1\BNA\_M\Methods\SFAM-EPA-BM011325.MA.M  
 Quant Title : SVOA CALIBRATION  
 QLast Update : Mon Jan 13 16:56:06 2025  
 Response via : Initial Calibration

