

Quantitation Report (QT Reviewed)

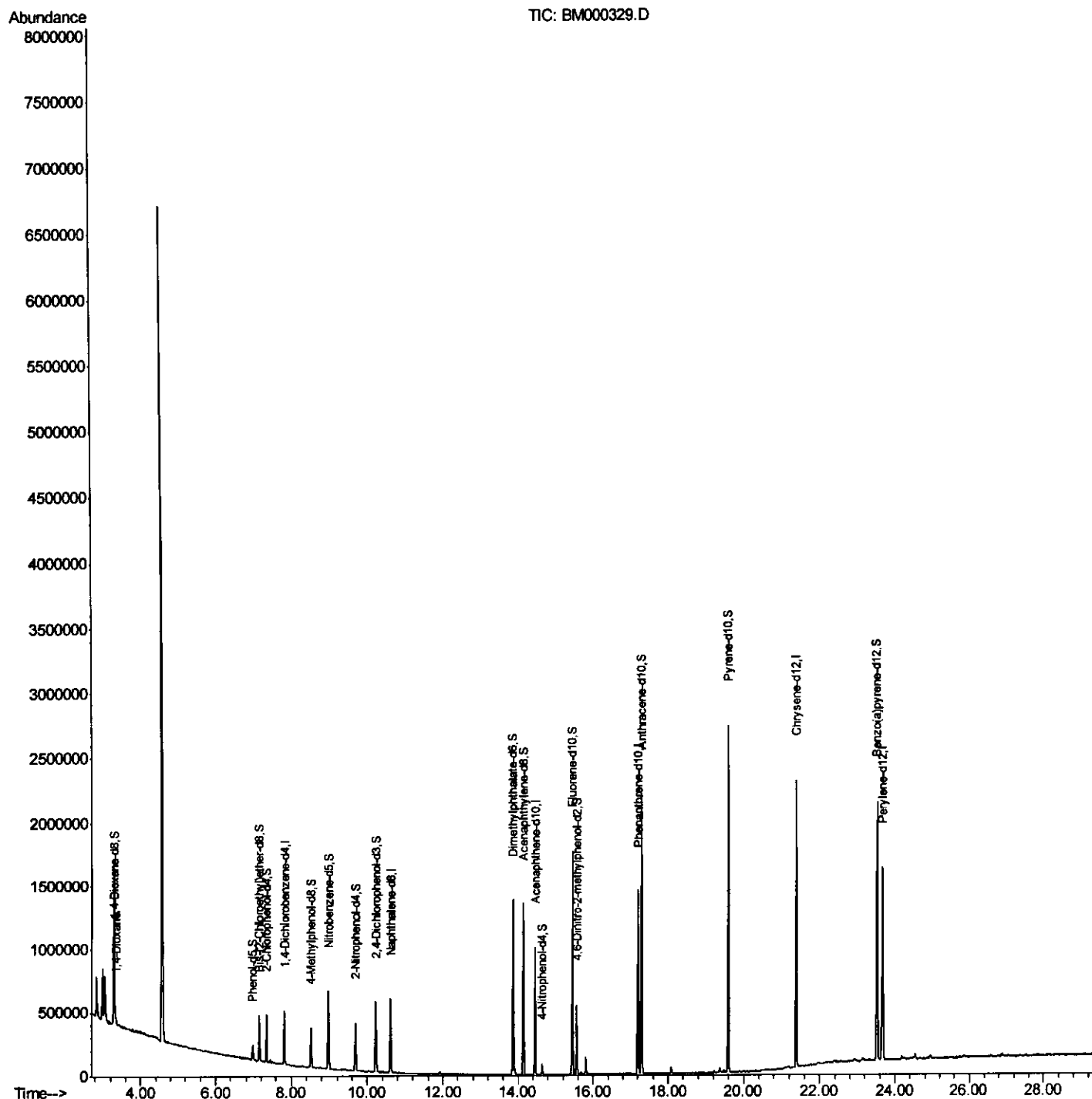
Data Path : Z:\HPCHEM1\BNA M\DATA\BM012315\  
 Data File : BM000329.D  
 Acq On : 24 Jan 2015 12:06  
 Operator : TP/IZ  
 Sample : G1134-06  
 Misc :  
 ALS Vial : 24 Sample Multiplier: 1

Instrument :  
 BNA\_M  
 Client Sampled :  
 C0AW5

Manual Integrations  
 APPROVED

apatel  
 1/26/2015 4:52:32 PM

Quant Time: Jan 26 12:43:35 2015  
 Quant Method : Z:\HPCHEM1\BNA M\METHODS\SOM01.2-EPA-BM012315.M  
 Quant Title : SVOA CALIBRATION  
 QLast Update : Sat Jan 24 04:15:00 2015  
 Response via : Initial Calibration



Quantitation Report (Qedit)

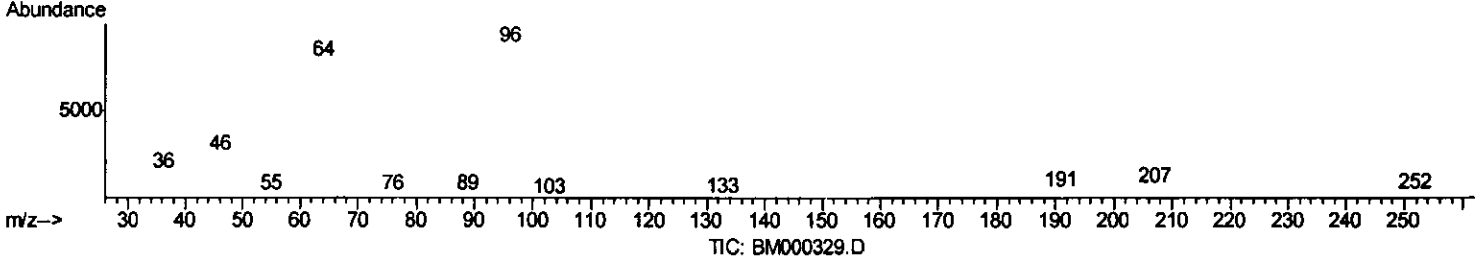
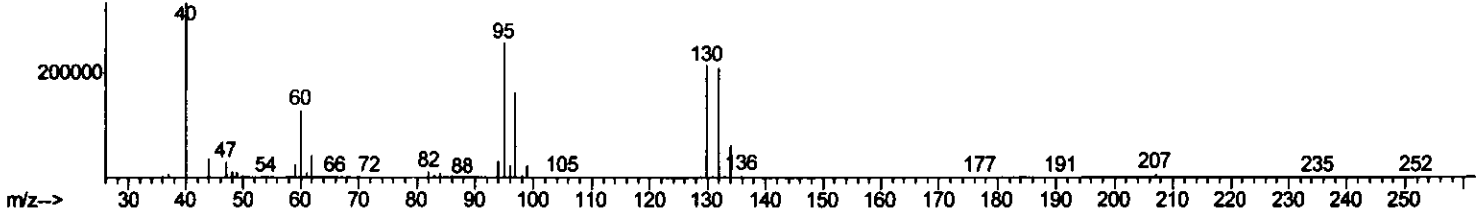
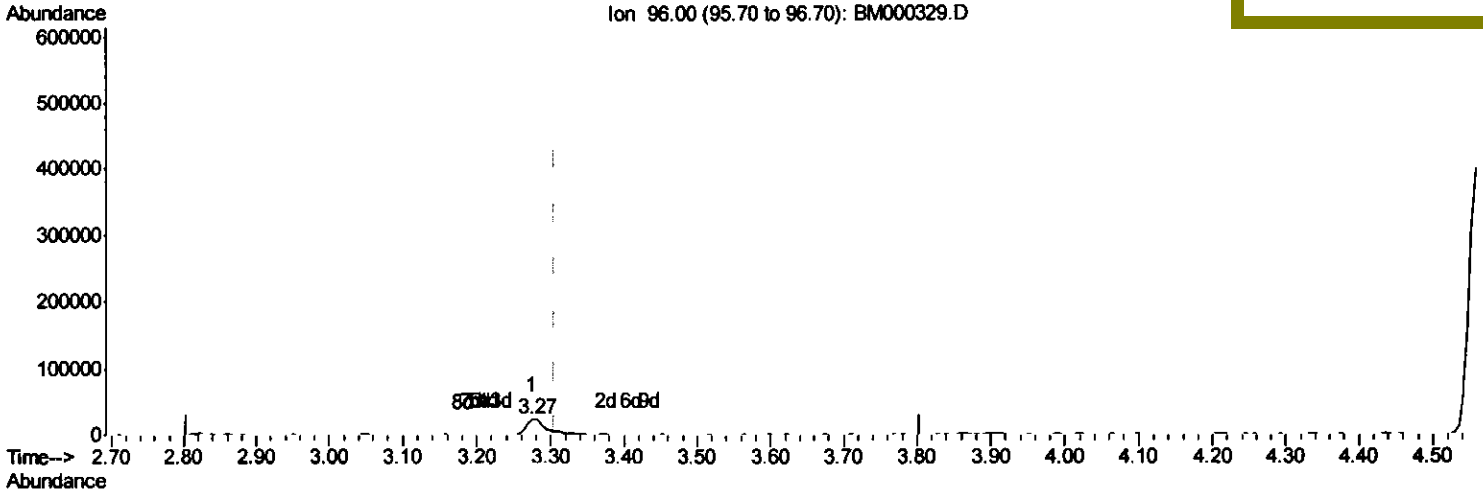
Data Path : Z:\HPCHEM1\BNA M\DATA\BM012315\  
 Data File : BM000329.D  
 Acq On : 24 Jan 2015 12:06  
 Operator : TP/IZ  
 Sample : G1134-06  
 Misc :  
 ALS Vial : 24 Sample Multiplier: 1

Instrument :  
 BNA\_M  
 ClientSampleId :  
 C0AW5

Quant Time: Jan 26 11:49:06 2015  
 Quant Method : Z:\HPCHEM1\BNA M\METHODS\SOM01.2-EPA-BM012315.M  
 Quant Title : SVOA CALIBRATION  
 QLast Update : Sat Jan 24 04:15:00 2015  
 Response via : Initial Calibration

Manual Integrations  
 APPROVED

apatel  
 1/26/2015 4:52:32 PM



TIC: BM000329.D

(3) 1,4-Dioxane-d8 (S)  
 3.275min (-0.030) 20.73ng/uL  
 response 41380

Ion	Exp%	Act%
96.00	100	100
64.00	74.90	0.61#
34.00	0.00	0.00
0.00	0.00	0.00

Quantitation Report (Qedit)

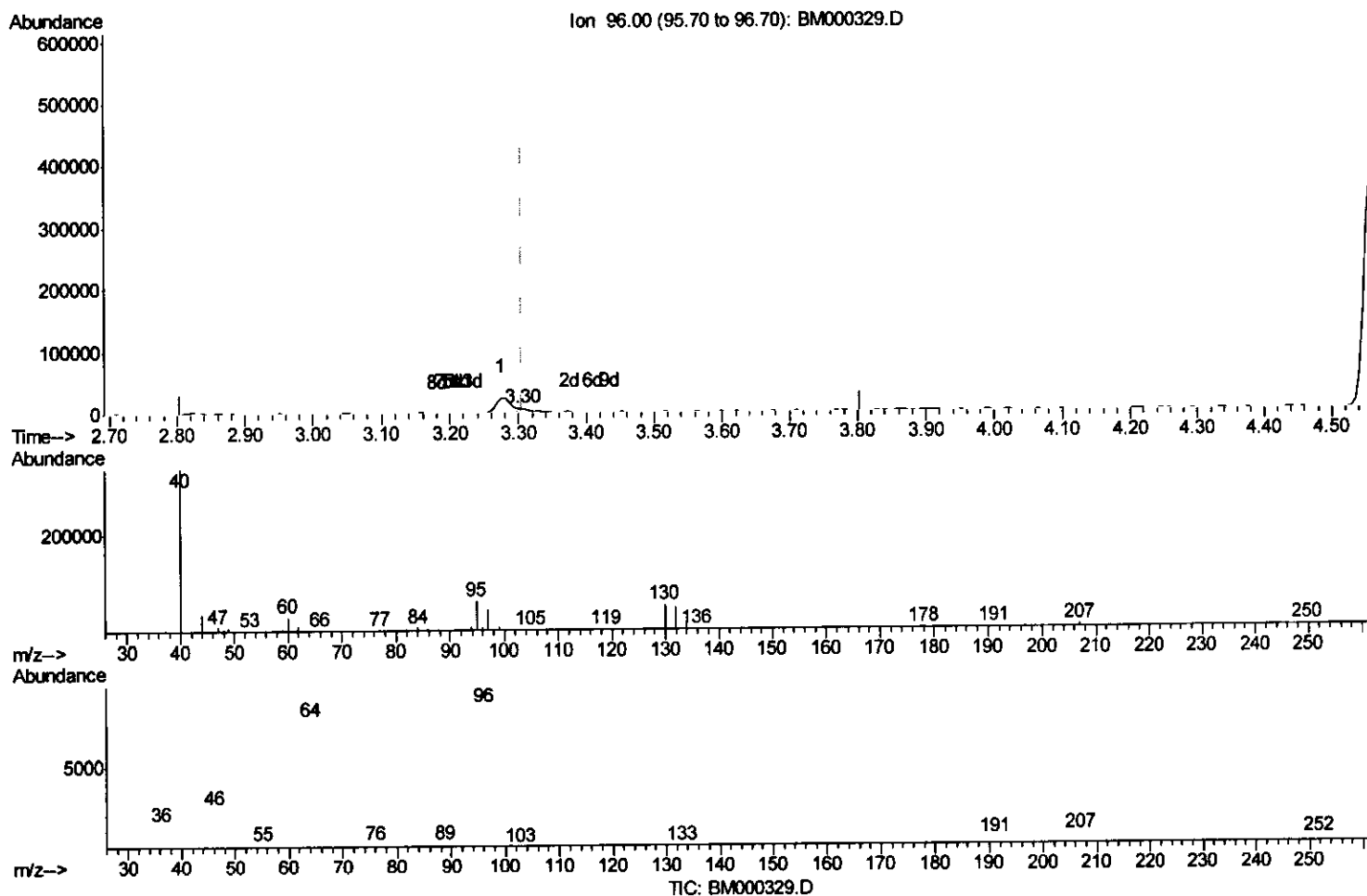
Data Path : Z:\HPCHEM1\BNA M\DATA\BM012315\  
 Data File : BM000329.D  
 Acq On : 24 Jan 2015 12:06  
 Operator : TP/IZ  
 Sample : G1134-06  
 Misc :  
 ALS Vial : 24 Sample Multiplier: 1

Instrument :  
 BNA\_M  
 ClientSampleId :  
 COAW5

Manual Integrations  
 APPROVED

apatel  
 1/26/2015 4:52:32 PM

Quant Time: Jan 26 11:49:06 2015  
 Quant Method : Z:\HPCHEM1\BNA M\METHODS\SOM01.2-EPA-BM012315.M  
 Quant Title : SVOA CALIBRATION  
 QLast Update : Sat Jan 24 04:15:00 2015  
 Response via : Initial Calibration



(3) 1,4-Dioxane-d8 (S)

3.299min (-0.006) 2.86ng/uL m

response 5702

Ion	Exp%	Act%
96.00	100	100
64.00	74.90	4.40#
34.00	0.00	0.00
0.00	0.00	0.00

T.P  
 1/30/15

Data Path : Z:\HPCHEM1\BNA M\DATA\BM012315\  
 Data File : BM000329.D  
 Acq On : 24 Jan 2015 12:06  
 Operator : TP/IZ  
 Sample : G1134-06  
 Misc :  
 ALS Vial : 24 Sample Multiplier: 1

Instrument :  
 BNA\_M  
 ClientSampleId :  
 COAW5

Quant Time: Jan 26 12:43:35 2015  
 Quant Method : Z:\HPCHEM1\BNA M\METHODS\SOM01.2-EPA-BM012315.M  
 Quant Title : SVOA CALIBRATION  
 QLast Update : Sat Jan 24 04:15:00 2015  
 Response via : Initial Calibration

Manual Integrations  
 APPROVED

apatel  
 1/26/2015 4:52:32 PM

Internal Standards	R.T.	QIon	Response	Conc	Units	Dev(Min)
1) 1,4-Dichlorobenzene-d4	7.82	152	87539	20.00	ng/ul	0.00
18) Naphthalene-d8	10.60	136	376760	20.00	ng/ul	0.00
35) Acenaphthene-d10	14.45	164	297660	20.00	ng/ul	0.00
61) Phenanthrene-d10	17.19	188	722202	20.00	ng/ul	0.00
75) Chrysene-d12	21.38	240	1017112	20.00	ng/ul	0.00
83) Perylene-d12	23.66	264	1089657	20.00	ng/ul	0.00

System Monitoring Compounds

3) 1,4-Dioxane-d8	3.30	96	5702m	2.86	ng/uL	0.00
5) Phenol-d5	6.97	99	48800	6.58	ng/ul	0.00
7) Bis-(2-Chloroethyl)ether-d	7.15	67	153971	30.07	ng/ul	0.00
9) 2-Chlorophenol-d4	7.35	132	123896	23.44	ng/ul	0.00
13) 4-Methylphenol-d8	8.51	113	84578	14.80	ng/ul	0.00
19) Nitrobenzene-d5	8.97	128	86030	30.21	ng/ul	0.00
22) 2-Nitrophenol-d4	9.69	143	80095	30.40	ng/ul	0.00
26) 2,4-Dichlorophenol-d3	10.22	165	145746	25.44	ng/ul	0.00
29) 4-Chloroaniline-d4	10.74	131	1536	0.22	ng/ul	0.00
43) Dimethylphthalate-d6	13.86	166	674528	31.56	ng/ul	0.00
46) Acenaphthylene-d8	14.14	160	819347	31.40	ng/ul	0.00
51) 4-Nitrophenol-d4	14.63	143	17716	5.01	ng/ul	-0.01
57) Fluorene-d10	15.44	176	631965	32.96	ng/ul	0.00
62) 4,6-Dinitro-2-methylphenol	15.56	200	84544	22.19	ng/ul	0.00
70) Anthracene-d10	17.29	188	1077003	31.41	ng/ul	0.00
76) Pvrene-d10	19.59	212	1313842	29.11	ng/ul	0.00
87) Benzo(a)pyrene-d12	23.52	264	1347006	27.18	ng/ul	0.00

*J.P.*  
 1/30/15

Target Compounds

2) 1,4-Dioxane	3.34	88	11462	4.24	ng/uL	Ovalue 91
----------------	------	----	-------	------	-------	--------------

(#) = qualifier out of range (m) = manual integration (+) = signals summed