

Data Path : Z:\HPCHEM1\BNA\_M\DATA\BM012317\  
 Data File : BM008833.D  
 Acq On : 24 Jan 2017 10:11  
 Operator : UM/SJ  
 Sample : I1323-12DL 10X  
 Misc :  
 ALS Vial : 33 Sample Multiplier: 1

Instrument :  
 BNA\_M  
 ClientSampleId :  
 DA9Q5DL

Integration Parameters: LSCINT.P  
 Integrator: RTE  
 Smoothing : OFF  
 Sampling : 1  
 Start Thrs: 0.2  
 Stop Thrs : 0

Filtering: 5  
 Min Area: 1 % of largest Peak  
 Max Peaks: 100  
 Peak Location: TOP

If leading or trailing edge < 100 prefer < Baseline drop else tangent >  
 Peak separation: 5

Method : Z:\HPCHEM1\BNA\_M\METHODS\SOM02.2-EPA-BM012317.M  
 Title : SVOA CALIBRATION

Signal : TIC

peak #	R.T. min	first scan	max scan	last scan	PK TY	peak height	corr. area	corr. % max.	% of total
1	7.351	804	810	817	rVB	813715	1199390	1.76%	1.053%
2	7.992	913	919	925	rVB	1598871	2439028	3.59%	2.141%
3	9.263	1119	1135	1139	rBV2	417560	1223117	1.80%	1.074%
4	10.739	1377	1386	1390	rBV2	553385	1211360	1.78%	1.063%
5	10.798	1390	1396	1401	rVB	3850394	6304563	9.27%	5.534%
6	11.010	1423	1432	1440	rBV3	366688	979097	1.44%	0.859%
7	11.098	1440	1447	1457	rVB	530814	1008801	1.48%	0.886%
8	12.398	1661	1668	1679	rBV	973181	1600202	2.35%	1.405%
9	12.616	1700	1705	1711	rVB	595698	920324	1.35%	0.808%
10	13.069	1770	1782	1788	rBV	1396411	2176909	3.20%	1.911%
11	13.574	1859	1868	1873	rBV	1863990	3011401	4.43%	2.643%
12	14.463	2009	2019	2025	rVB	427238	838169	1.23%	0.736%
13	14.574	2029	2038	2043	rBV	868087	1303273	1.92%	1.144%
14	14.974	2101	2106	2114	rVB4	679346	1550962	2.28%	1.361%
15	15.151	2130	2136	2140	rBV3	874631	1460922	2.15%	1.282%
16	15.698	2220	2229	2235	rBV	43268734	68026076	100.00%	59.714%
17	16.292	2325	2330	2338	rVB	648181	969186	1.42%	0.851%
18	16.968	2436	2445	2455	rBV2	7669527	11716085	17.22%	10.285%
19	17.321	2499	2505	2509	rBV	1154269	1674854	2.46%	1.470%
20	17.721	2568	2573	2578	rVB	844421	1183830	1.74%	1.039%
21	21.486	3208	3213	3219	rBV	1433965	1816984	2.67%	1.595%
22	23.850	3609	3615	3624	rVB	668057	1305272	1.92%	1.146%

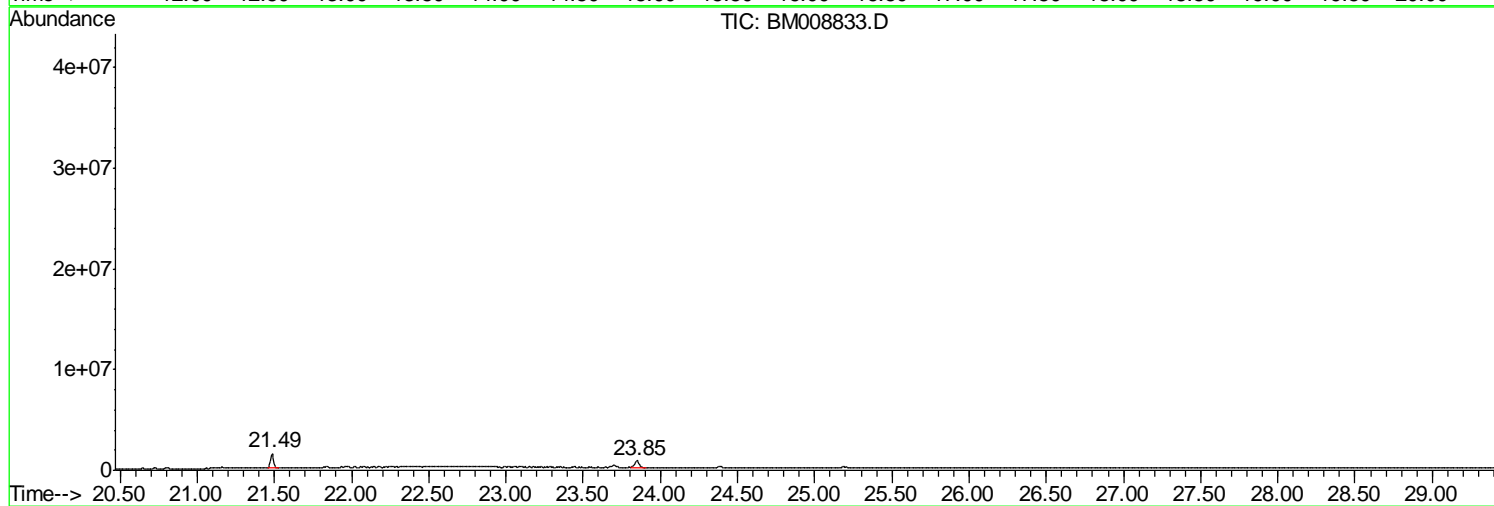
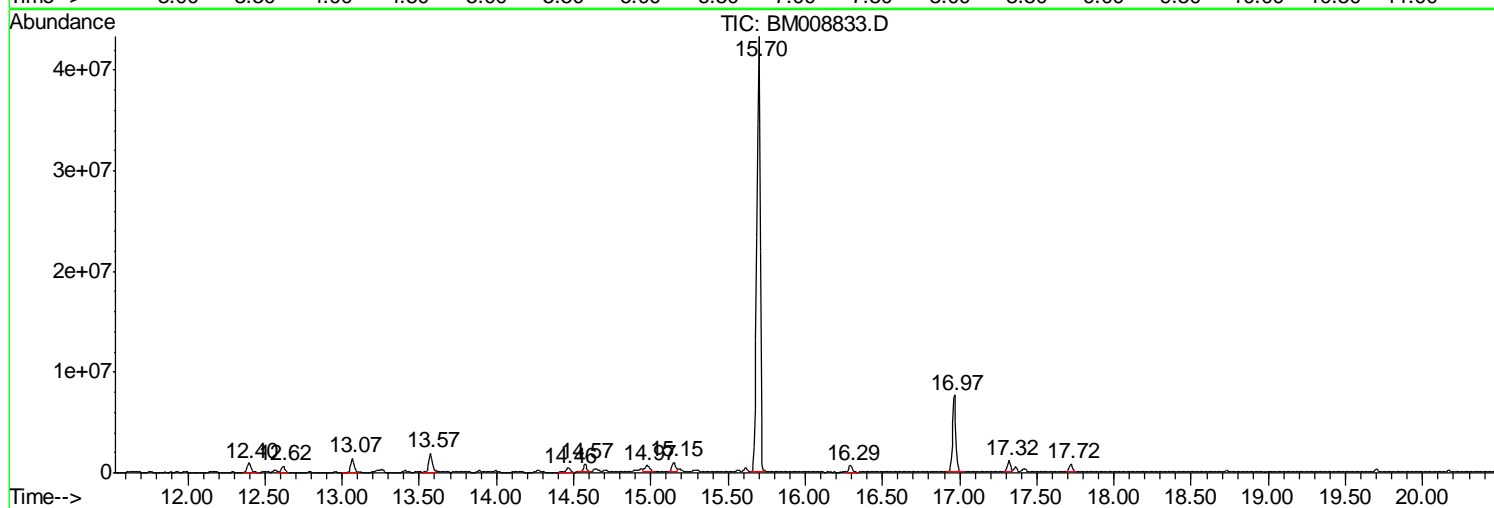
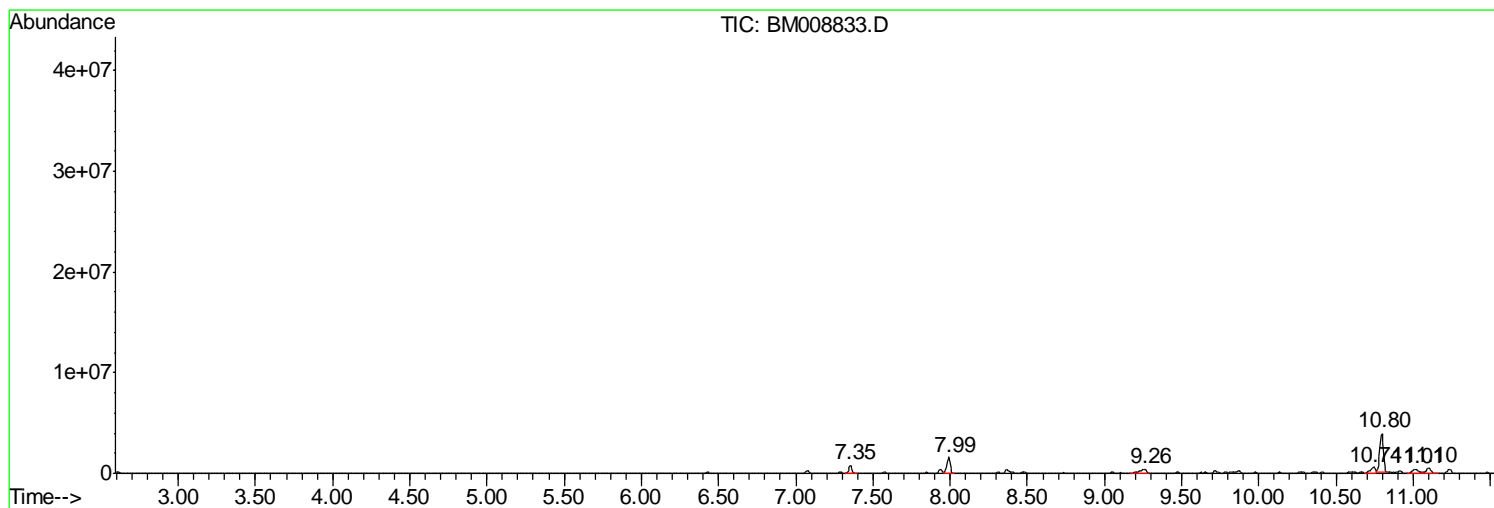
Sum of corrected areas: 113919805

Data Path : Z:\HPCHEM1\BNA\_M\DATA\BM012317\  
Data File : BM008833.D  
Acq On : 24 Jan 2017 10:11  
Operator : UM/SJ  
Sample : I1323-12DL 10X  
Misc :  
ALS Vial : 33 Sample Multiplier: 1

Instrument :  
BNA\_M  
ClientSampleId :  
DA9Q5DL

Quant Method : Z:\HPCHEM1\BNA\_M\METHODS\SOM02.2-EPA-BM012317.M  
Quant Title : SVOA CALIBRATION

TIC Library : C:\DATABASE\NIST11.L  
TIC Integration Parameters: LSCINT.P



Data Path : Z:\HPCHEM1\BNA\_M\DATA\BM012317\  
 Data File : BM008833.D  
 Acq On : 24 Jan 2017 10:11  
 Operator : UM/SJ  
 Sample : I1323-12DL 10X  
 Misc :  
 ALS Vial : 33 Sample Multiplier: 1

Instrument :  
 BNA\_M  
 ClientSampleID :  
 DA9Q5DL

Quant Method : Z:\HPCHEM1\BNA\_M\METHODS\SOM02.2-EPA-BM012317.M  
 Quant Title : SVOA CALIBRATION

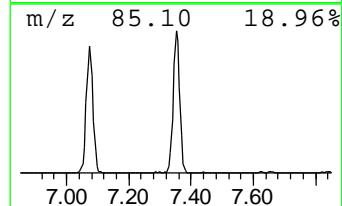
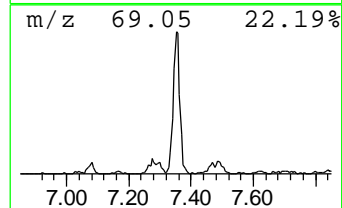
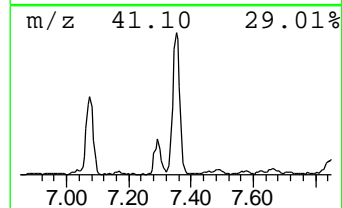
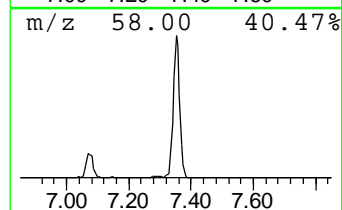
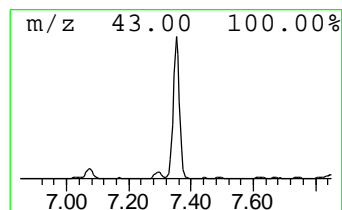
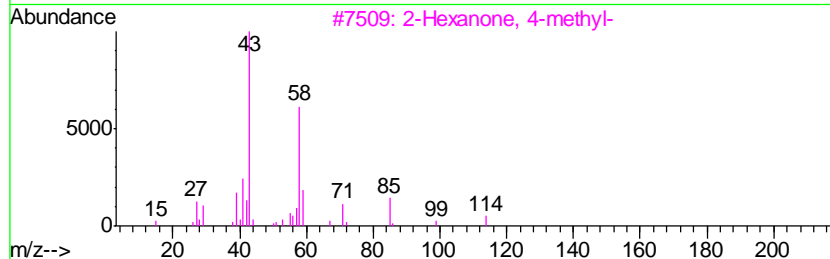
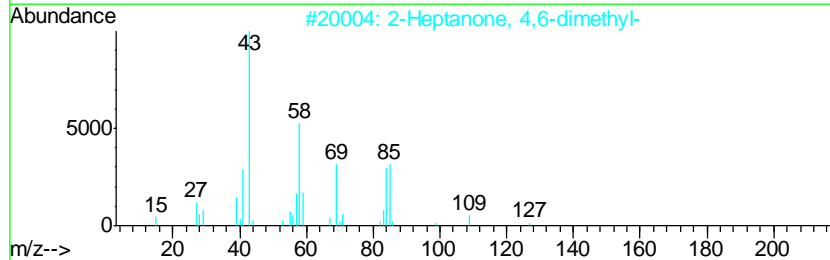
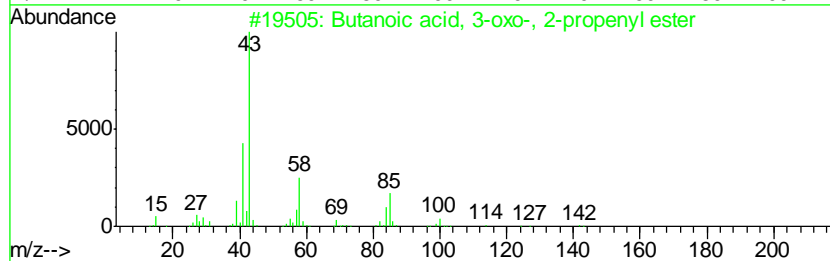
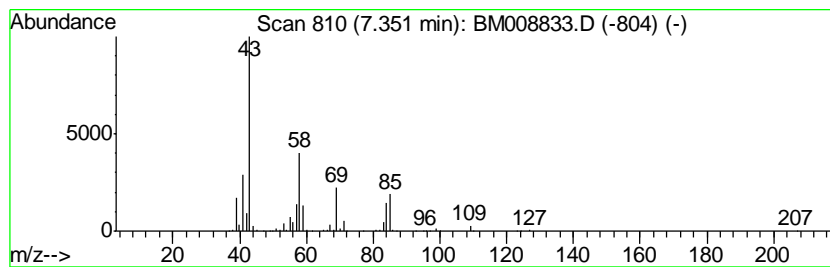
TIC Library : C:\DATABASE\NIST11.L  
 TIC Integration Parameters: LSCINT.P

\*\*\*\*\*  
 Peak Number 1 Butanoic acid, 3-oxo-, 2-pr... Concentration Rank 10

R.T.	EstConc	Area	Relative to ISTD	R.T.
7.35	9.83 ng/ul	1199390	1,4-Dichlorobenzene-d4	7.94

Hit#	of	Tentative ID	MW	MolForm	CAS#	Qual
1	5	Butanoic acid, 3-oxo-, 2-propeny...	142	C7H10O3	001118-84-9	72
2		2-Heptanone, 4,6-dimethyl-	142	C9H18O	019549-80-5	64
3		2-Hexanone, 4-methyl-	114	C7H14O	000105-42-0	50
4		2-Hexanone, 5-methyl-	114	C7H14O	000110-12-3	45
5		2-Hexanone, 4-hydroxy-5-methyl-3...	172	C10H20O2	061141-74-0	42



Data Path : Z:\HPCHEM1\BNA\_M\DATA\BM012317\  
 Data File : BM008833.D  
 Acq On : 24 Jan 2017 10:11  
 Operator : UM/SJ  
 Sample : I1323-12DL 10X  
 Misc :  
 ALS Vial : 33 Sample Multiplier: 1

Instrument :  
 BNA\_M  
 ClientSampleID :  
 DA9Q5DL

Quant Method : Z:\HPCHEM1\BNA\_M\METHODS\SOM02.2-EPA-BM012317.M  
 Quant Title : SVOA CALIBRATION

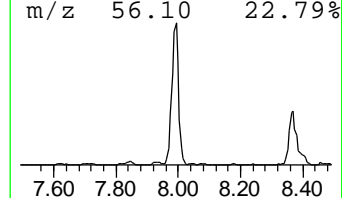
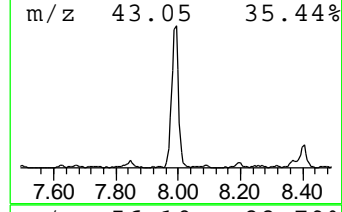
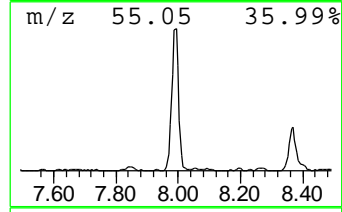
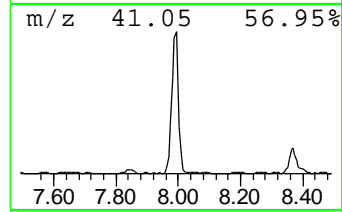
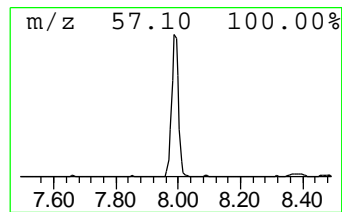
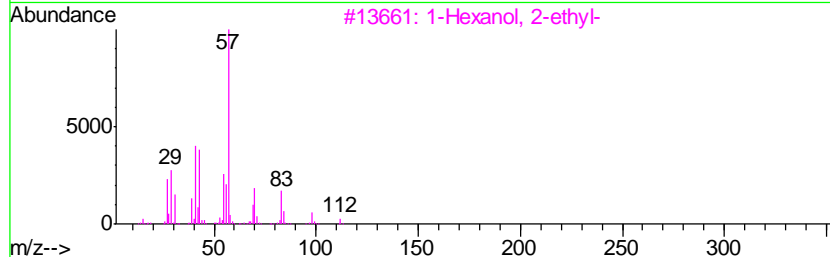
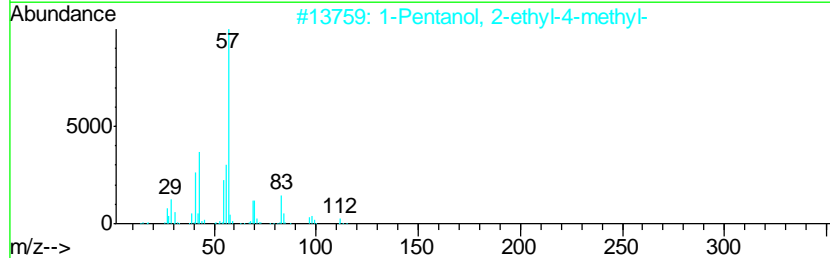
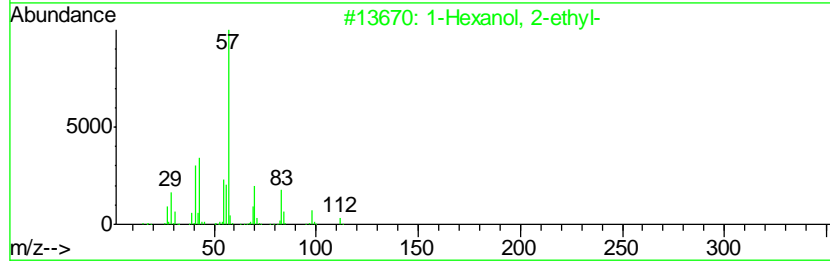
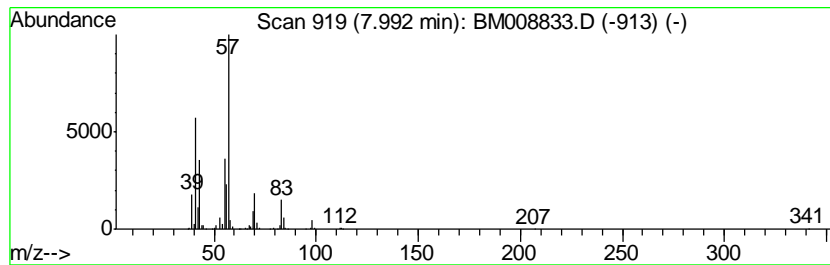
TIC Library : C:\DATABASE\NIST11.L  
 TIC Integration Parameters: LSCINT.P

\*\*\*\*\*  
 Peak Number 2 1-Hexanol, 2-ethyl- Concentration Rank 3

R.T.	EstConc	Area	Relative to ISTD	R.T.
7.99	20.00 ng/ul	2439030	1,4-Dichlorobenzene-d4	7.94

Hit#	of	Tentative ID	MW	MolForm	CAS#	Qual
1	5	1-Hexanol, 2-ethyl-	130	C8H18O	000104-76-7	78
2		1-Pentanol, 2-ethyl-4-methyl-	130	C8H18O	000106-67-2	78
3		1-Hexanol, 2-ethyl-	130	C8H18O	000104-76-7	72
4		Heptane, 3-ethyl-	128	C9H20	015869-80-4	50
5		Acetic acid, cyano-, 2-ethylhexy...	197	C11H19NO2	013361-34-7	50



Data Path : Z:\HPCHEM1\BNA\_M\DATA\BM012317\  
 Data File : BM008833.D  
 Acq On : 24 Jan 2017 10:11  
 Operator : UM/SJ  
 Sample : I1323-12DL 10X  
 Misc :  
 ALS Vial : 33 Sample Multiplier: 1

Instrument :  
 BNA\_M  
 ClientSampleID :  
 DA9Q5DL

Quant Method : Z:\HPCHEM1\BNA\_M\METHODS\SOM02.2-EPA-BM012317.M  
 Quant Title : SVOA CALIBRATION

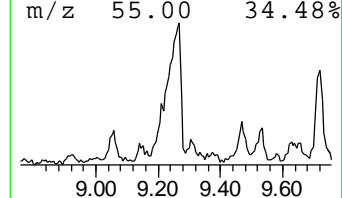
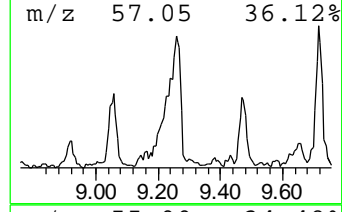
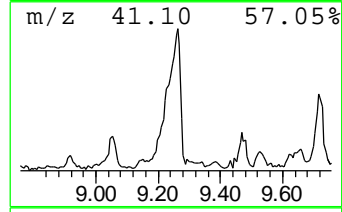
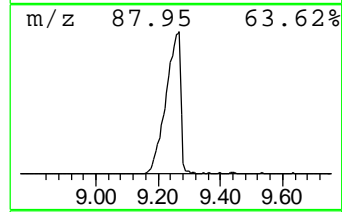
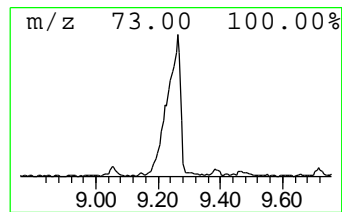
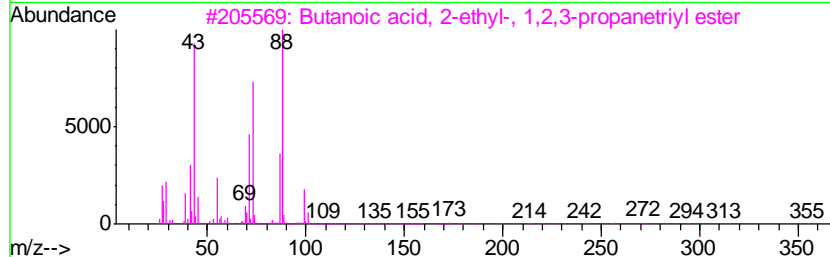
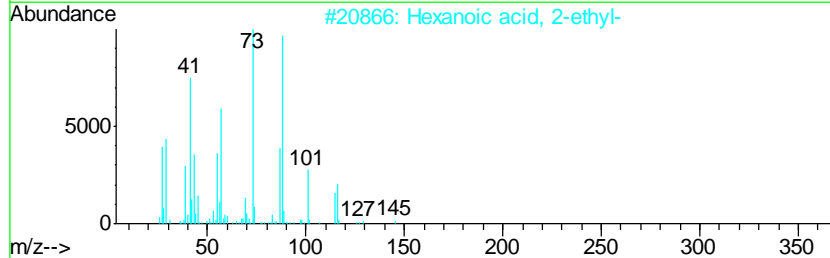
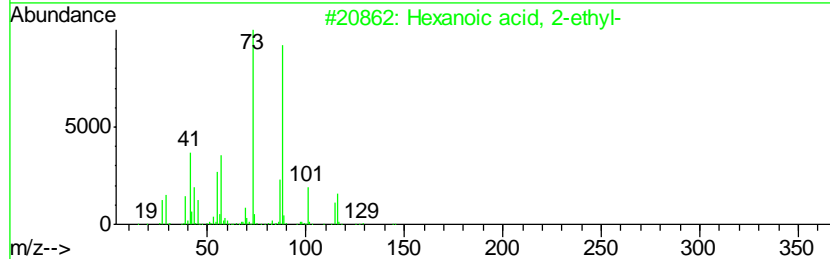
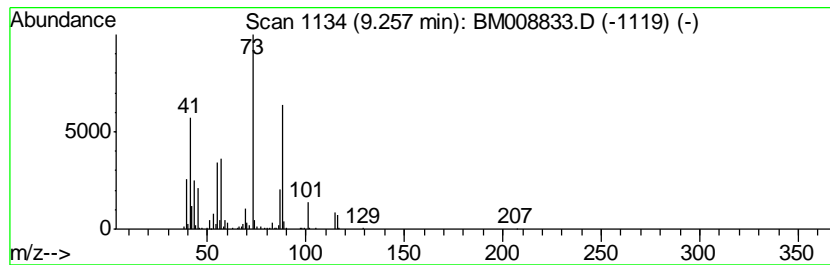
TIC Library : C:\DATABASE\NIST11.L  
 TIC Integration Parameters: LSCINT.P

\*\*\*\*\*  
 Peak Number 3 Hexanoic acid, 2-ethyl- Concentration Rank 9

R.T.	EstConc	Area	Relative to ISTD	R.T.
9.26	10.03 ng/ul	1223120	1,4-Dichlorobenzene-d4	7.94

Hit#	of	Tentative ID	MW	MolForm	CAS#	Qual
1	5	Hexanoic acid, 2-ethyl-	144	C8H16O2	000149-57-5	53
2		Hexanoic acid, 2-ethyl-	144	C8H16O2	000149-57-5	45
3		Butanoic acid, 2-ethyl-, 1,2,3-p...	386	C21H38O6	056554-54-2	38
4		Pentanoic acid, 2,4-dimethyl-, m...	144	C8H16O2	071672-33-8	38
5		Hexanoic acid, 2-ethyl-	144	C8H16O2	000149-57-5	37



Data Path : Z:\HPCHEM1\BNA\_M\DATA\BM012317\  
 Data File : BM008833.D  
 Acq On : 24 Jan 2017 10:11  
 Operator : UM/SJ  
 Sample : I1323-12DL 10X  
 Misc :  
 ALS Vial : 33 Sample Multiplier: 1

Instrument :  
 BNA\_M  
 ClientSampleID :  
 DA9Q5DL

Quant Method : Z:\HPCHEM1\BNA\_M\METHODS\SOM02.2-EPA-BM012317.M  
 Quant Title : SVOA CALIBRATION

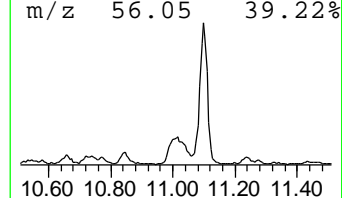
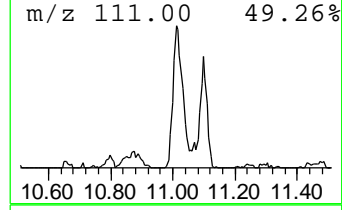
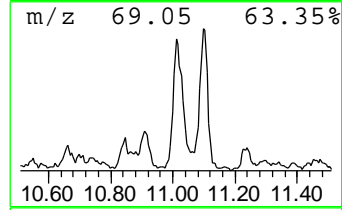
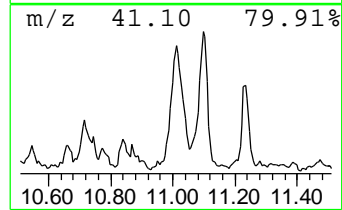
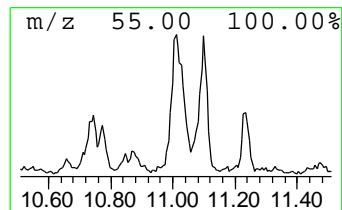
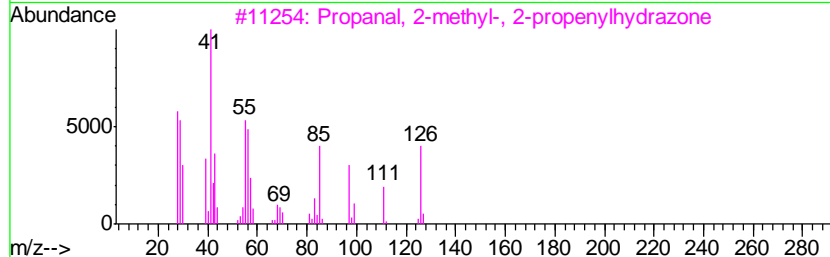
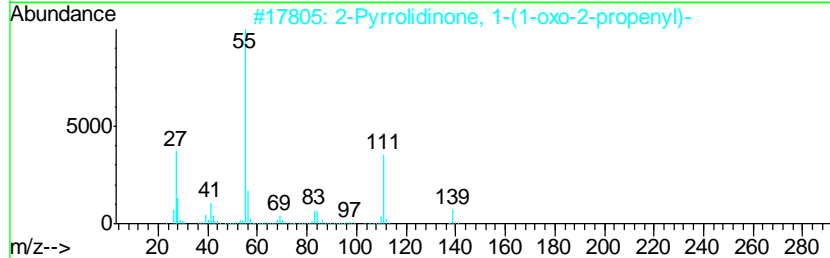
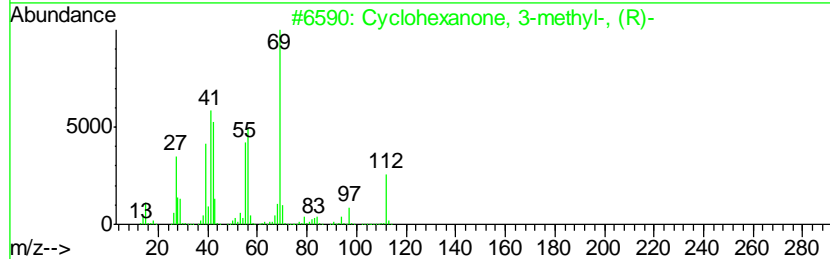
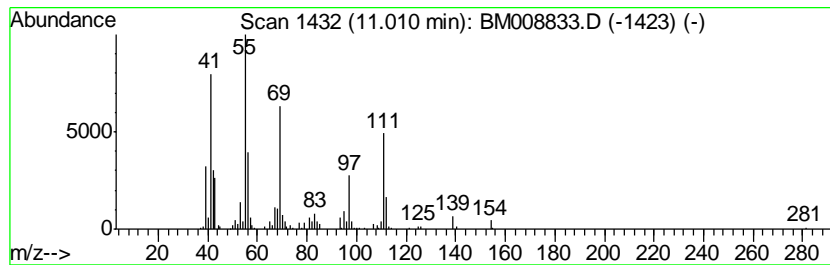
TIC Library : C:\DATABASE\NIST11.L  
 TIC Integration Parameters: LSCINT.P

\*\*\*\*\*  
 Peak Number 4 unknown-01 Concentration Rank 5

R.T.	EstConc	Area	Relative to ISTD	R.T.
11.01	16.17 ng/ul	979097	Naphthalene-d8	10.75

Hit#	of	Tentative ID	MW	MolForm	CAS#	Qual
1	5	Cyclohexanone, 3-methyl-, (R)-	112	C7H12O	013368-65-5	46
2		2-Pyrrolidinone, 1-(1-oxo-2-prop...	139	C7H9NO2	002043-26-7	35
3		Propanal, 2-methyl-, 2-propenylh...	126	C7H14N2	066075-08-9	35
4		Cyclopentane, propyl-	112	C8H16	002040-96-2	30
5		1,3-Cyclopentanedione, 4-butyl-	154	C9H14O2	054244-72-3	30



Data Path : Z:\HPCHEM1\BNA\_M\DATA\BM012317\  
 Data File : BM008833.D  
 Acq On : 24 Jan 2017 10:11  
 Operator : UM/SJ  
 Sample : I1323-12DL 10X  
 Misc :  
 ALS Vial : 33 Sample Multiplier: 1

Instrument :  
 BNA\_M  
 ClientSampleID :  
 DA9Q5DL

Quant Method : Z:\HPCHEM1\BNA\_M\METHODS\SOM02.2-EPA-BM012317.M  
 Quant Title : SVOA CALIBRATION

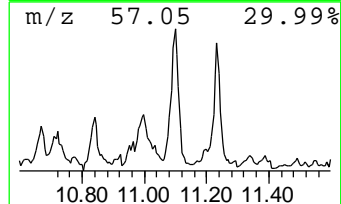
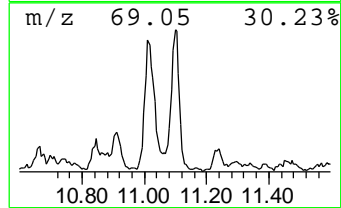
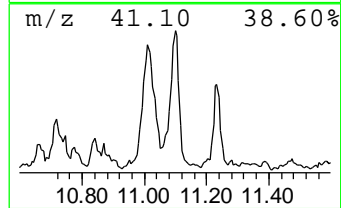
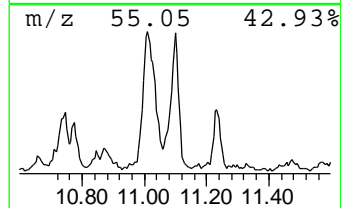
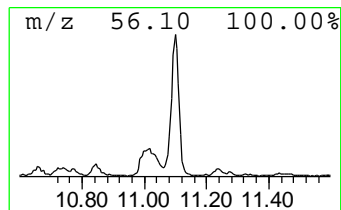
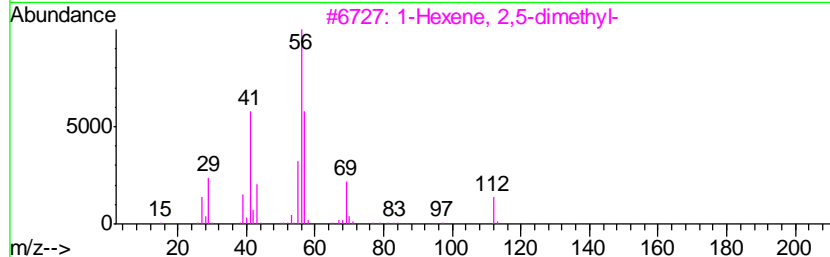
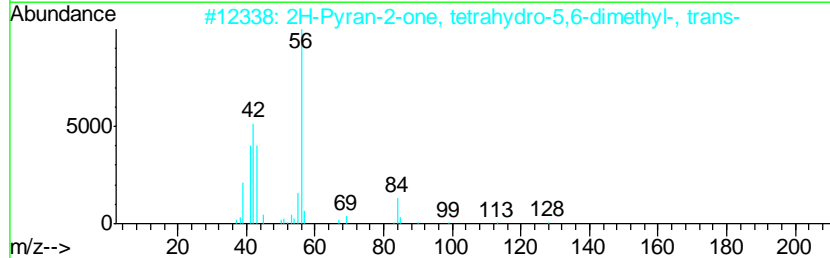
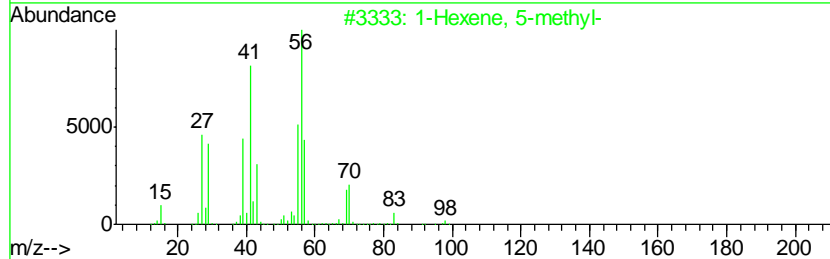
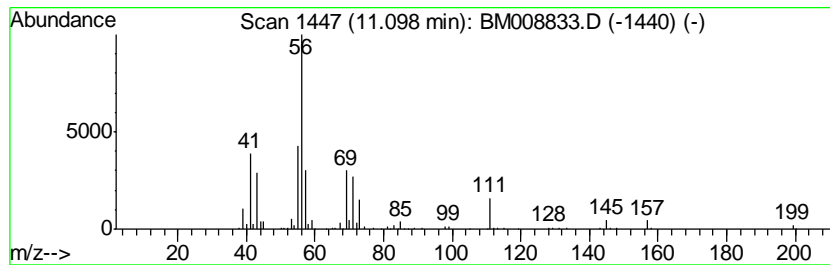
TIC Library : C:\DATABASE\NIST11.L  
 TIC Integration Parameters: LSCINT.P

\*\*\*\*\*  
 Peak Number 5 (DEL) Alkane: Cyclic11.10 Concentration Rank 4

R.T.	EstConc	Area	Relative to ISTD	R.T.
11.10	16.66 ng/ul	1008800	Naphthalene-d8	10.75

Hit#	of	Tentative ID	MW	MolForm	CAS#	Qual
1	5	1-Hexene, 5-methyl-	98	C7H14	003524-73-0	47
2		2H-Pyran-2-one, tetrahydro-5,6-d...	128	C7H12O2	024405-16-1	46
3		1-Hexene, 2,5-dimethyl-	112	C8H16	006975-92-4	38
4		2,4-Dipropyl-5-ethyl-1,3-dioxane	200	C12H24O2	006413-83-8	38
5		1-Heptene, 2,6-dimethyl-	126	C9H18	003074-78-0	38



Data Path : Z:\HPCHEM1\BNA\_M\DATA\BM012317\  
 Data File : BM008833.D  
 Acq On : 24 Jan 2017 10:11  
 Operator : UM/SJ  
 Sample : I1323-12DL 10X  
 Misc :  
 ALS Vial : 33 Sample Multiplier: 1

Instrument :  
 BNA\_M  
 ClientSampled :  
 DA9Q5DL

Quant Method : Z:\HPCHEM1\BNA\_M\METHODS\SOM02.2-EPA-BM012317.M  
 Quant Title : SVOA CALIBRATION

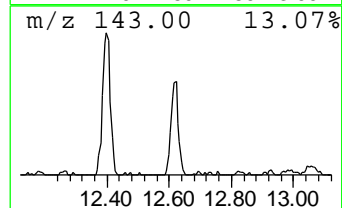
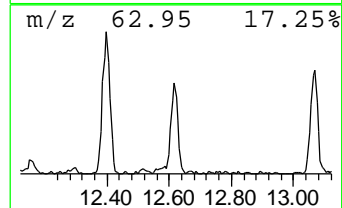
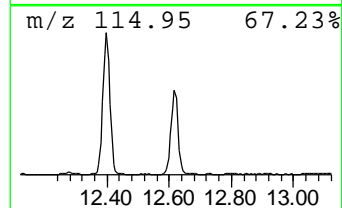
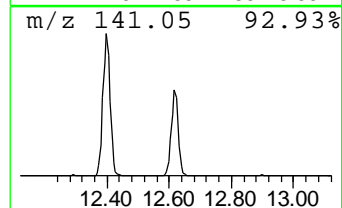
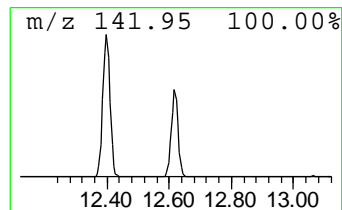
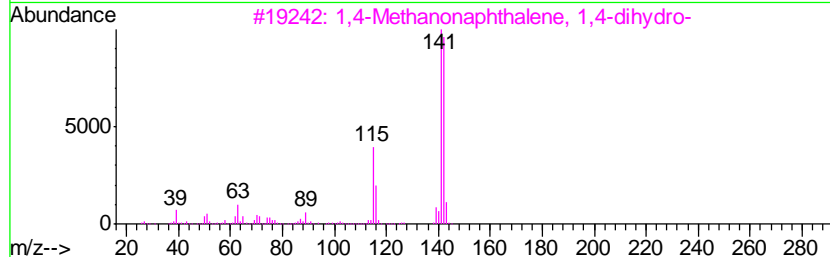
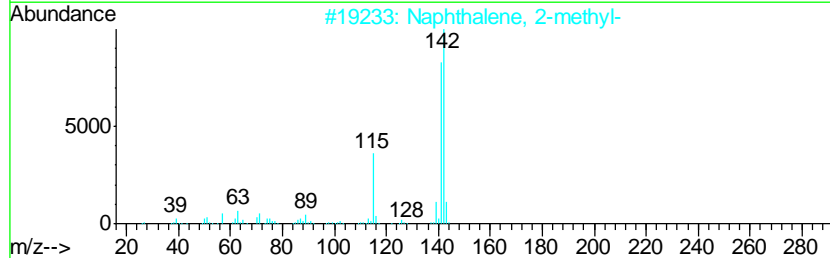
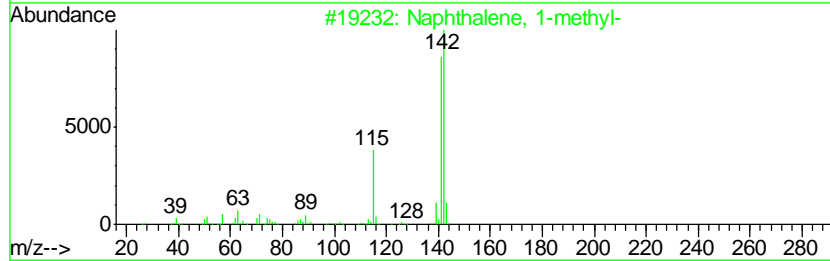
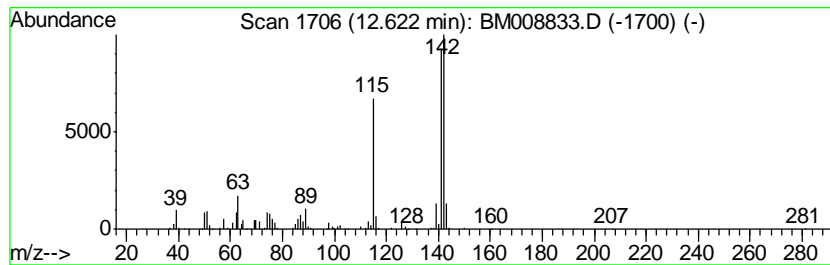
TIC Library : C:\DATABASE\NIST11.L  
 TIC Integration Parameters: LSCINT.P

\*\*\*\*\*  
 Peak Number 6 Naphthalene, 1-methyl- Concentration Rank 6

R.T.	EstConc	Area	Relative to ISTD	R.T.
12.62	15.19 ng/ul	920324	Naphthalene-d8	10.75

Hit#	of	Tentative ID	MW	MolForm	CAS#	Qual
1	5	Naphthalene, 1-methyl-	142	C11H10	000090-12-0	95
2		Naphthalene, 2-methyl-	142	C11H10	000091-57-6	94
3		1,4-Methanonaphthalene, 1,4-dihy...	142	C11H10	004453-90-1	94
4		Naphthalene, 1-methyl-	142	C11H10	000090-12-0	91
5		Bicyclo[4.4.1]undeca-1,3,5,7,9-p...	142	C11H10	002443-46-1	91





Data Path : Z:\HPCHEM1\BNA\_M\DATA\BM012317\  
 Data File : BM008833.D  
 Acq On : 24 Jan 2017 10:11  
 Operator : UM/SJ  
 Sample : I1323-12DL 10X  
 Misc :  
 ALS Vial : 33 Sample Multiplier: 1

Instrument :  
 BNA\_M  
 ClientSampleID :  
 DA9Q5DL

Quant Method : Z:\HPCHEM1\BNA\_M\METHODS\SOM02.2-EPA-BM012317.M  
 Quant Title : SVOA CALIBRATION

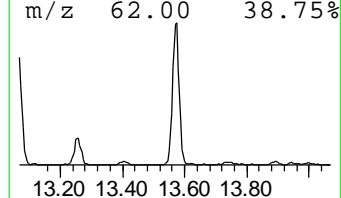
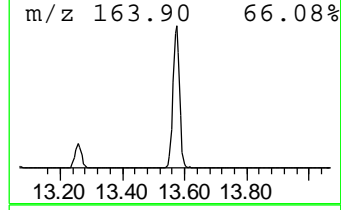
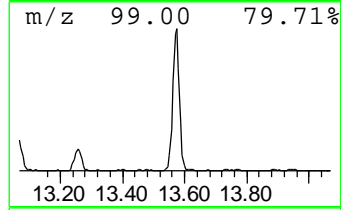
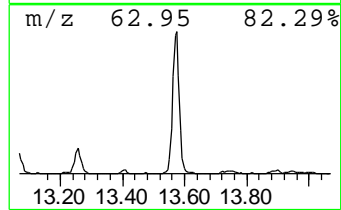
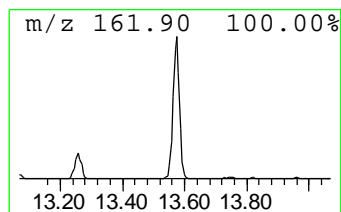
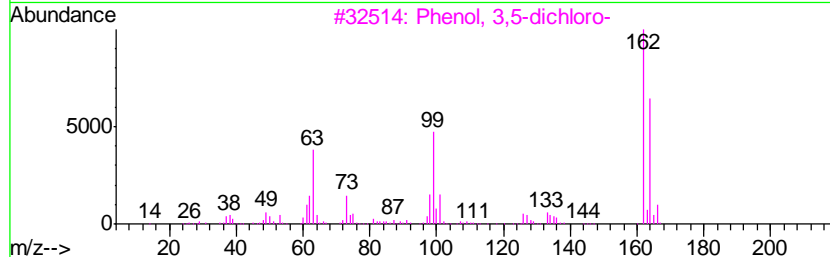
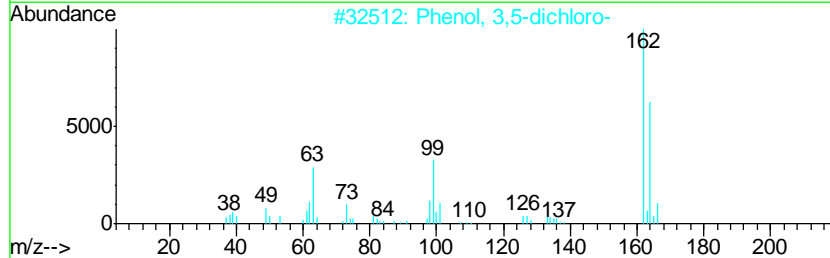
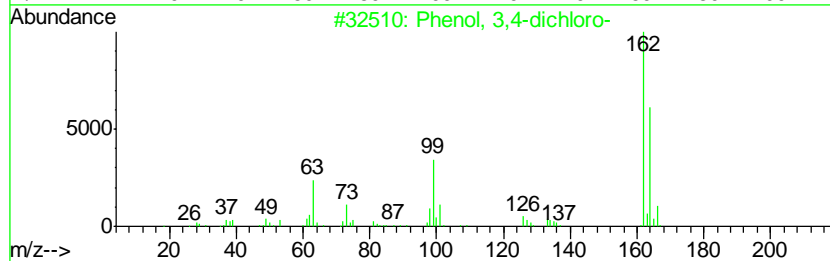
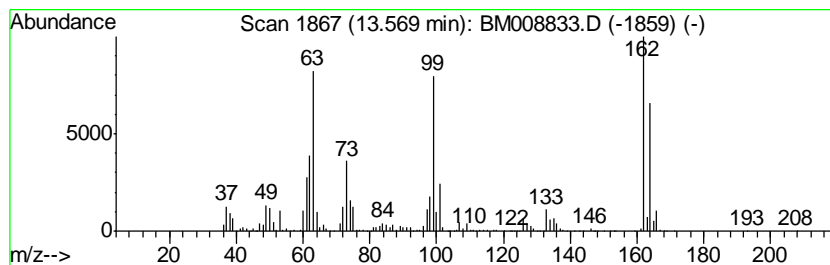
TIC Library : C:\DATABASE\NIST11.L  
 TIC Integration Parameters: LSCINT.P

\*\*\*\*\*  
 Peak Number 7 Phenol, 3,4-dichloro- Concentration Rank 2

R.T.	EstConc	Area	Relative to ISTD	R.T.
13.57	46.21 ng/ul	3011400	Acenaphthene-d10	14.57

Hit#	of	Tentative ID	MW	MolForm	CAS#	Qual
1	5	Phenol, 3,4-dichloro-	162	C6H4Cl2O	000095-77-2	95
2		Phenol, 3,5-dichloro-	162	C6H4Cl2O	000591-35-5	90
3		Phenol, 3,5-dichloro-	162	C6H4Cl2O	000591-35-5	90
4		Phenol, 3,4-dichloro-	162	C6H4Cl2O	000095-77-2	90
5		Phenol, 2,6-dichloro-	162	C6H4Cl2O	000087-65-0	70



Data Path : Z:\HPCHEM1\BNA\_M\DATA\BM012317\  
 Data File : BM008833.D  
 Acq On : 24 Jan 2017 10:11  
 Operator : UM/SJ  
 Sample : I1323-12DL 10X  
 Misc :  
 ALS Vial : 33 Sample Multiplier: 1

Instrument :  
 BNA\_M  
 ClientSampleID :  
 DA9Q5DL

Quant Method : Z:\HPCHEM1\BNA\_M\METHODS\SOM02.2-EPA-BM012317.M  
 Quant Title : SVOA CALIBRATION

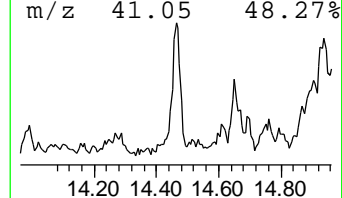
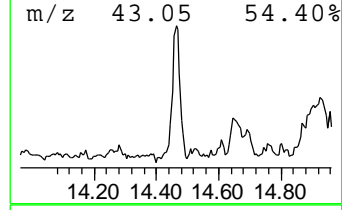
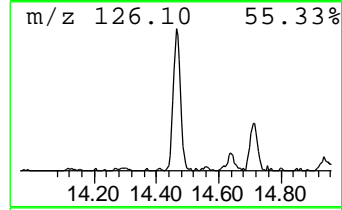
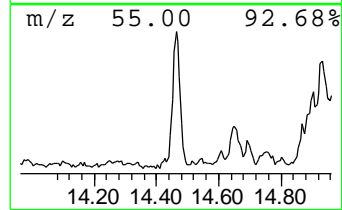
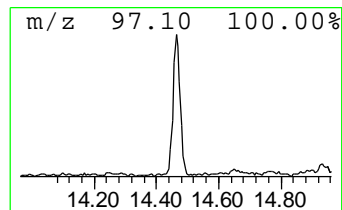
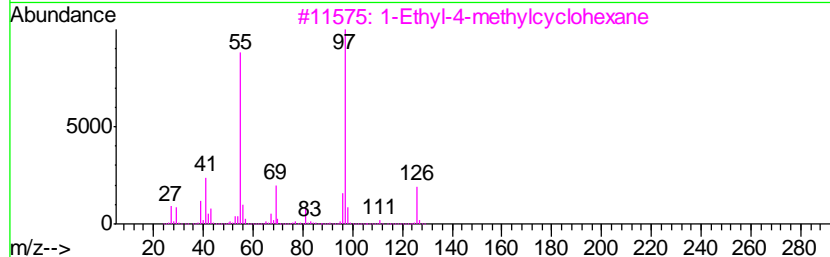
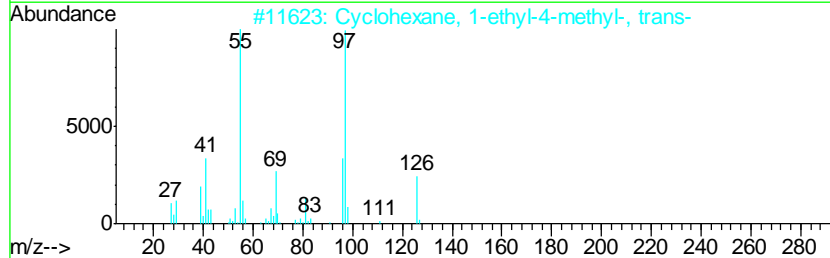
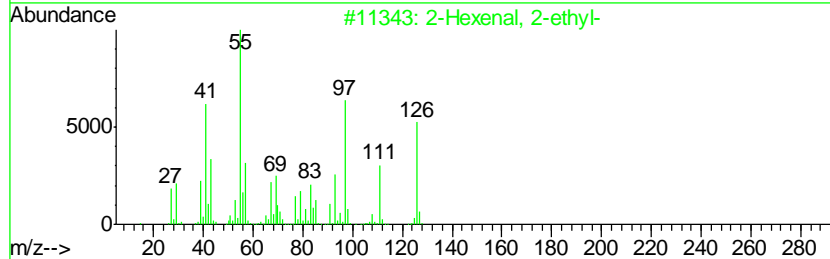
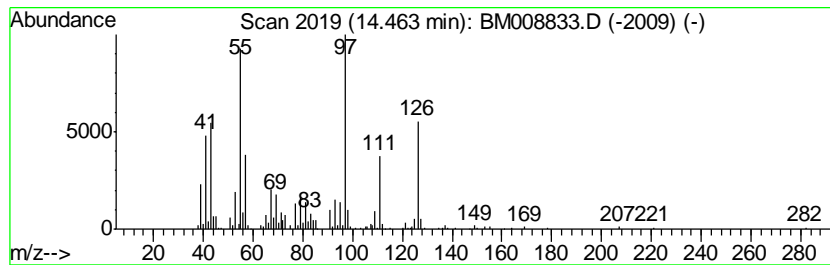
TIC Library : C:\DATABASE\NIST11.L  
 TIC Integration Parameters: LSCINT.P

\*\*\*\*\*  
 Peak Number 8 2-Hexenal, 2-ethyl- Concentration Rank 7

R.T.	EstConc	Area	Relative to ISTD	R.T.
14.46	12.86 ng/ul	838169	Acenaphthene-d10	14.57

Hit#	of	Tentative ID	MW	MolForm	CAS#	Qual
1	5	2-Hexenal, 2-ethyl-	126	C8H14O	000645-62-5	58
2		Cyclohexane, 1-ethyl-4-methyl-, ...	126	C9H18	006236-88-0	58
3		1-Ethyl-4-methylcyclohexane	126	C9H18	003728-56-1	58
4		1-Ethyl-3-methylcyclohexane (c,t)	126	C9H18	003728-55-0	58
5		Cyclohexane, 1-ethyl-2-methyl-	126	C9H18	003728-54-9	53



Data Path : Z:\HPCHEM1\BNA\_M\DATA\BM012317\  
 Data File : BM008833.D  
 Acq On : 24 Jan 2017 10:11  
 Operator : UM/SJ  
 Sample : I1323-12DL 10X  
 Misc :  
 ALS Vial : 33 Sample Multiplier: 1

Instrument :  
 BNA\_M  
 ClientSampleID :  
 DA9Q5DL

Quant Method : Z:\HPCHEM1\BNA\_M\METHODS\SOM02.2-EPA-BM012317.M  
 Quant Title : SVOA CALIBRATION

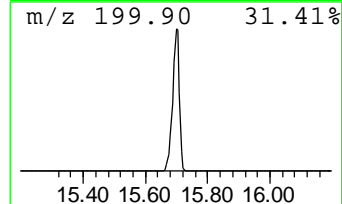
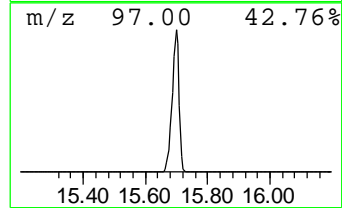
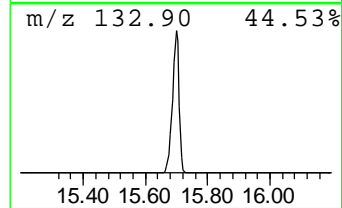
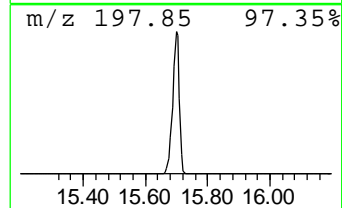
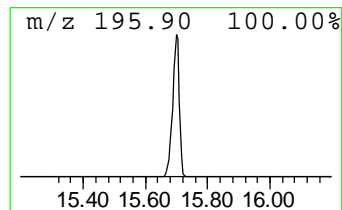
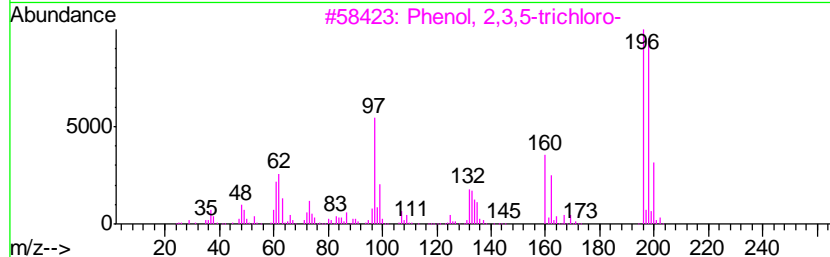
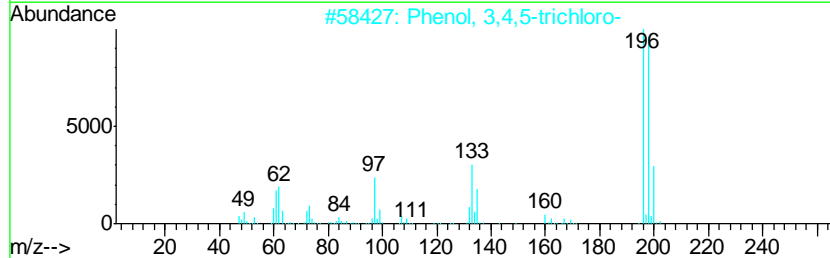
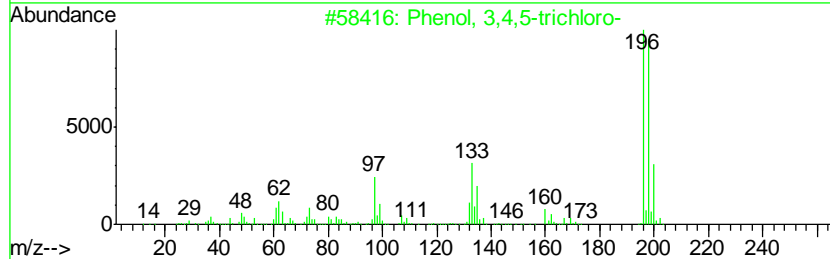
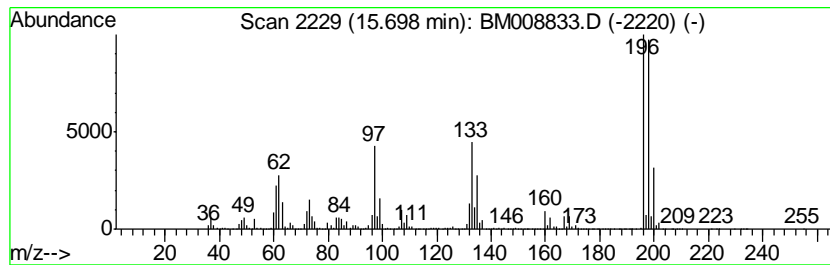
TIC Library : C:\DATABASE\NIST11.L  
 TIC Integration Parameters: LSCINT.P

\*\*\*\*\*  
 Peak Number 9 Phenol, 3,4,5-trichloro- Concentration Rank 1

R.T.	EstConc	Area	Relative to ISTD	R.T.
15.70	1043.93 ng/ul	68026100	Acenaphthene-d10	14.57

Hit#	of	Tentative ID	MW	MolForm	CAS#	Qual
1	5	Phenol, 3,4,5-trichloro-	196	C6H3Cl3O	000609-19-8	96
2		Phenol, 3,4,5-trichloro-	196	C6H3Cl3O	000609-19-8	95
3		Phenol, 2,3,5-trichloro-	196	C6H3Cl3O	000933-78-8	93
4		Phenol, 2,3,5-trichloro-	196	C6H3Cl3O	000933-78-8	91
5		Phenol, 2,3,6-trichloro-	196	C6H3Cl3O	000933-75-5	81



Data Path : Z:\HPCHEM1\BNA\_M\DATA\BM012317\  
 Data File : BM008833.D  
 Acq On : 24 Jan 2017 10:11  
 Operator : UM/SJ  
 Sample : I1323-12DL 10X  
 Misc :  
 ALS Vial : 33 Sample Multiplier: 1

Instrument :  
 BNA\_M  
 ClientSampleID :  
 DA9Q5DL

Quant Method : Z:\HPCHEM1\BNA\_M\METHODS\SOM02.2-EPA-BM012317.M  
 Quant Title : SVOA CALIBRATION

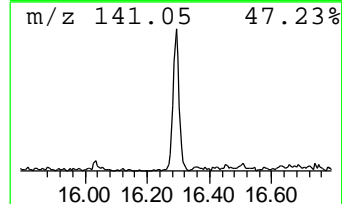
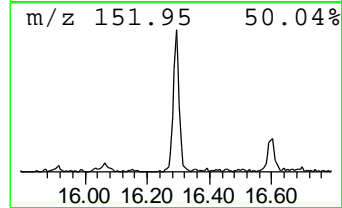
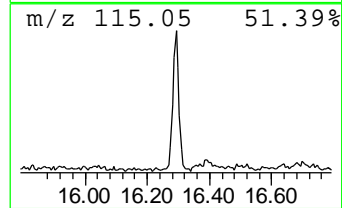
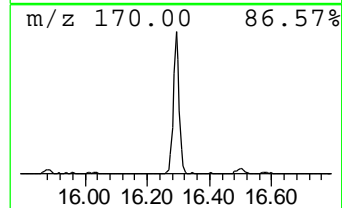
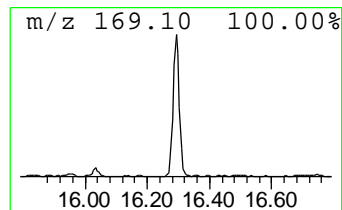
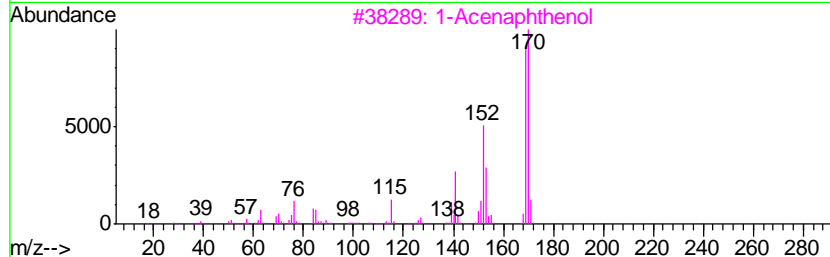
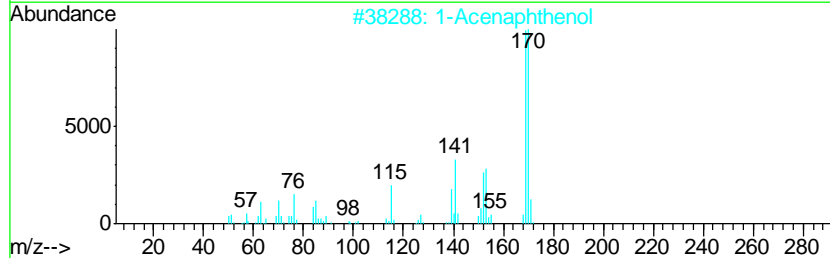
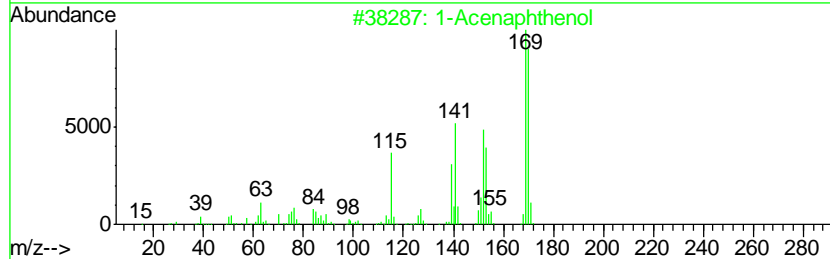
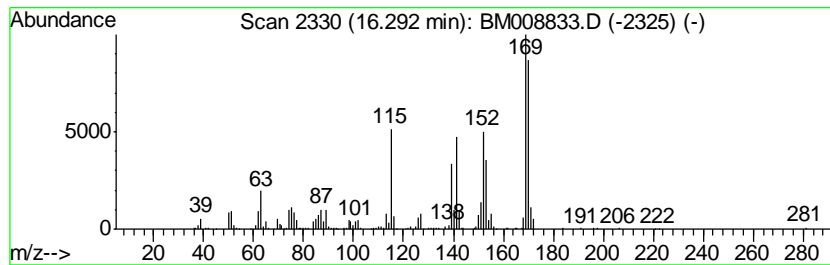
TIC Library : C:\DATABASE\NIST11.L  
 TIC Integration Parameters: LSCINT.P

\*\*\*\*\*  
 Peak Number 10 1-Acenaphthenol Concentration Rank 8

R.T.	EstConc	Area	Relative to ISTD	R.T.
16.29	11.57 ng/ul	969186	Phenanthrene-d10	17.32

Hit#	of	Tentative ID	MW	MolForm	CAS#	Qual
1	5	1-Acenaphthenol	170	C12H10O	006306-07-6	98
2		1-Acenaphthenol	170	C12H10O	006306-07-6	95
3		1-Acenaphthenol	170	C12H10O	006306-07-6	93
4		o-Hydroxybiphenyl	170	C12H10O	000090-43-7	86
5		o-Hydroxybiphenyl	170	C12H10O	000090-43-7	53



Data Path : Z:\HPCHEM1\BNA\_M\DATA\BM012317\  
 Data File : BM008833.D  
 Acq On : 24 Jan 2017 10:11  
 Operator : UM/SJ  
 Sample : I1323-12DL 10X  
 Misc :  
 ALS Vial : 33 Sample Multiplier: 1

Instrument :  
 BNA\_M  
 ClientSampleId :  
 DA9Q5DL

Quant Method : Z:\HPCHEM1\BNA\_M\METHODS\SOM02.2-EPA-BM012317.M  
 Quant Title : SVOA CALIBRATION

TIC Library : C:\DATABASE\NIST11.L  
 TIC Integration Parameters: LSCINT.P

TIC Top Hit name	RT	EstConc	Units	Response	--Internal Standard--			
					#	RT	Resp	Conc
Butanoic acid, 3-...	7.35	9.8	ng/ul	1199390	1	7.94	2439030	20.0
1-Hexanol, 2-ethyl-	7.99	20.0	ng/ul	2439030	1	7.94	2439030	20.0
Hexanoic acid, 2-...	9.26	10.0	ng/ul	1223120	1	7.94	2439030	20.0
unknown-01	11.01	16.2	ng/ul	979097	2	10.75	1211360	20.0
(DEL) Alkane: Cyc...	11.10	16.7	ng/ul	1008800	2	10.75	1211360	20.0
Naphthalene, 1-me...	12.62	15.2	ng/ul	920324	2	10.75	1211360	20.0
Phenol, 3,4-dichl...	13.57	46.2	ng/ul	3011400	3	14.57	1303270	20.0
2-Hexenal, 2-ethyl-	14.46	12.9	ng/ul	838169	3	14.57	1303270	20.0
Phenol, 3,4,5-tri...	15.70	1043.9	ng/ul	68026100	3	14.57	1303270	20.0
1-Acenaphthenol	16.29	11.6	ng/ul	969186	4	17.32	1674850	20.0