

Data Path : Z:\HPCHEM1\BNA M\DATA\BM012318\  
 Data File : BM013752.D  
 Acq On : 24 Jan 2018 04:37  
 Operator : SJ/JU  
 Sample : J1222-04  
 Misc :  
 ALS Vial : 21 Sample Multiplier: 1

Instrument :  
 BNA\_M  
 ClientSampleId :

Quant Time: Jan 24 06:10:02 2018  
 Quant Method : Z:\HPCHEM1\BNA M\METHODS\SOM-EPA-BM011018.M  
 Quant Title : SVOA CALIBRATION  
 QLast Update : Wed Jan 24 06:09:06 2018  
 Response via : Initial Calibration

Internal Standards	R.T.	QIon	Response	Conc	Units	Dev(Min)
1) 1,4-Dichlorobenzene-d4	7.60	152	168638	20.00	ng/ul	0.00
18) Naphthalene-d8	10.38	136	688790	20.00	ng/ul	0.00
35) Acenaphthene-d10	14.26	164	398834	20.00	ng/ul	0.00
61) Phenanthrene-d10	17.01	188	922665	20.00	ng/ul	0.00
75) Chrysene-d12	21.21	240	1014790	20.00	ng/ul	0.00
83) Perylene-d12	23.41	264	1010043	20.00	ng/ul	0.00

## System Monitoring Compounds

3) 1,4-Dioxane-d8	3.16	96	16764	3.93	ng/uL	0.00
5) Phenol-d5	6.79	99	384100	29.67	ng/ul	0.00
7) Bis-(2-Chloroethyl)ether-d	6.95	67	239303	30.51	ng/ul	0.00
9) 2-Chlorophenol-d4	7.14	132	331121	31.39	ng/ul	0.00
13) 4-Methylphenol-d8	8.32	113	330142	33.17	ng/ul	0.00
19) Nitrobenzene-d5	8.76	128	174442	32.64	ng/ul	0.00
22) 2-Nitrophenol-d4	9.47	143	188469	33.37	ng/ul	0.00
26) 2,4-Dichlorophenol-d3	10.01	165	347578	31.86	ng/ul	0.00
29) 4-Chloroaniline-d4	10.53	131	429929	45.42	ng/ul	0.00
43) Dimethylphthalate-d6	13.67	166	1065354	32.41	ng/ul	0.00
46) Acenaphthylene-d8	13.94	160	1355319	32.33	ng/ul	0.00
51) 4-Nitrophenol-d4	14.49	143	137049	25.65	ng/ul	0.00
57) Fluorene-d10	15.26	176	918316	31.77	ng/ul	0.00
62) 4,6-Dinitro-2-methylphenol	15.40	200	128949	23.22	ng/ul	0.00
70) Anthracene-d10	17.11	188	1438371	32.01	ng/ul	0.00
76) Pyrene-d10	19.42	212	1581490	33.47	ng/ul	0.00
87) Benzo(a)pyrene-d12	23.27	264	1599912	34.46	ng/ul	0.00

## Target Compounds

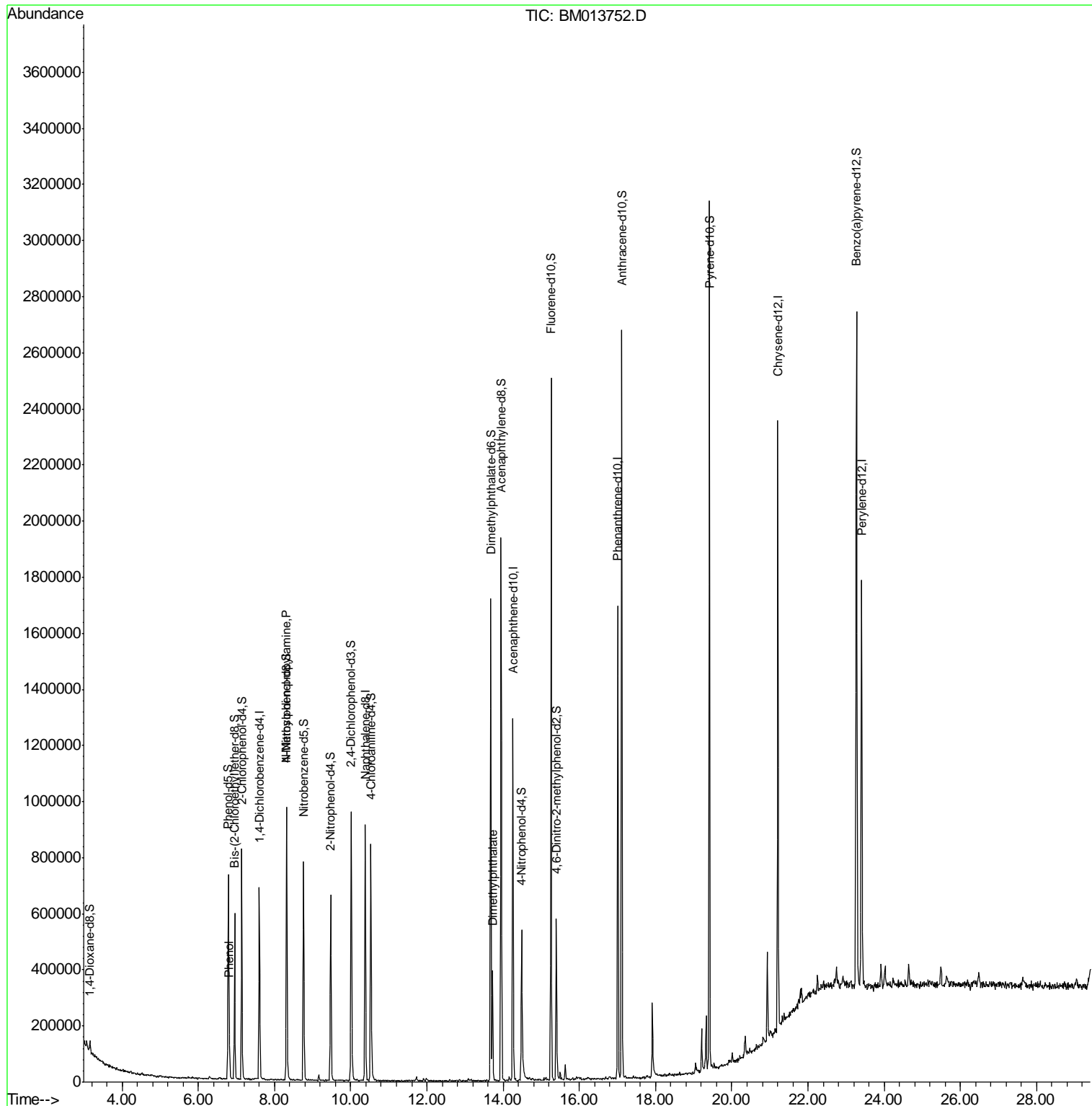
					Ovalue
6) Phenol	6.82	94	59900	4.613	ng/ul# 86
15) N-Nitroso-di-n-propylamine	8.32	70	11166	1.390	ng/ul# 1
44) Dimethylphthalate	13.72	163	231733	7.170	ng/ul 99

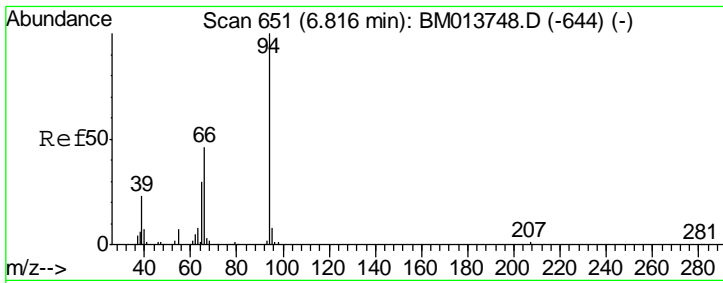
(#) = qualifier out of range (m) = manual integration (+) = signals summed

Data Path : Z:\HPCHEM1\BNA M\DATA\BM012318\  
 Data File : BM013752.D  
 Acq On : 24 Jan 2018 04:37  
 Operator : SJ/JU  
 Sample : J1222-04  
 Misc :  
 ALS Vial : 21 Sample Multiplier: 1

Instrument :  
 BNA\_M  
 Client Sampled :

Quant Time: Jan 24 06:10:02 2018  
 Quant Method : Z:\HPCHEM1\BNA M\METHODS\SOM-EPA-BM011018.M  
 Quant Title : SVOA CALIBRATION  
 QLast Update : Wed Jan 24 06:09:06 2018  
 Response via : Initial Calibration

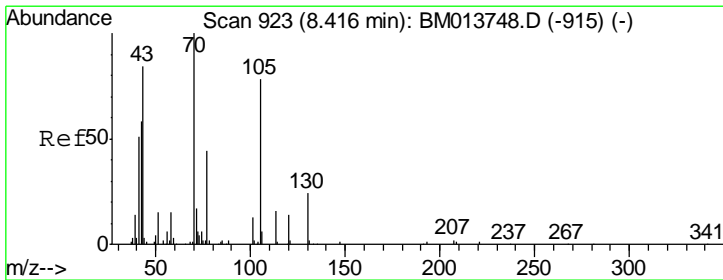
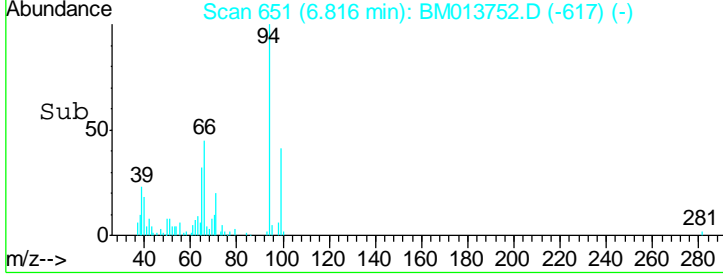
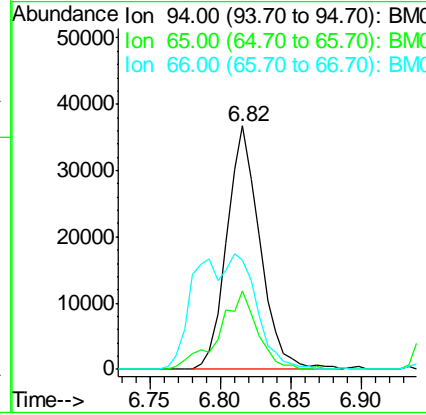
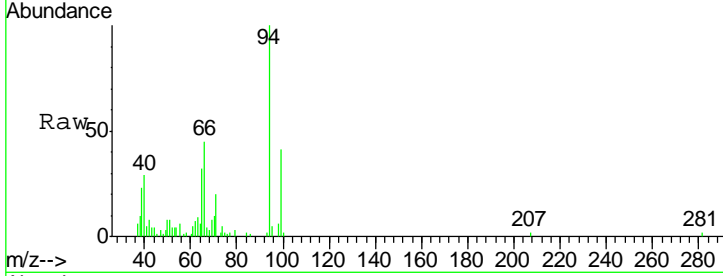




#6  
 Phenol  
 Concen: 4.613 ng/ul  
 RT: 6.82 min Scan# 651  
 Delta R.T. -0.00 min  
 Lab File: BM013752.D  
 Acq: 24 Jan 2018 04:37

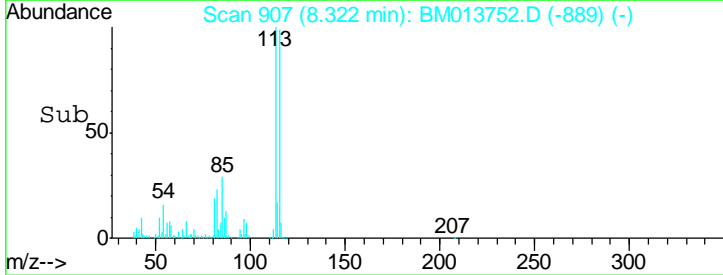
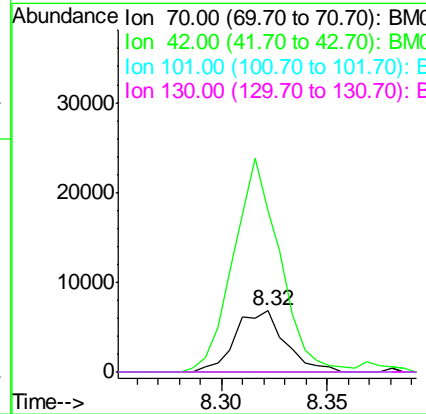
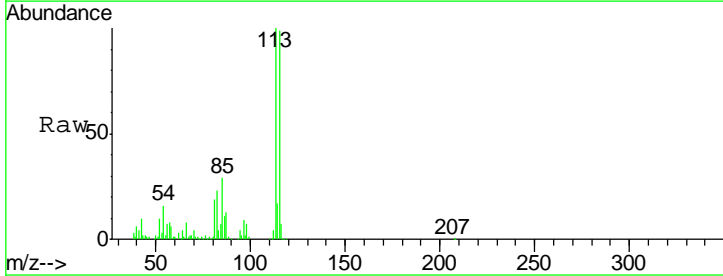
Instrument :  
 BNA\_M  
 ClientSampled :

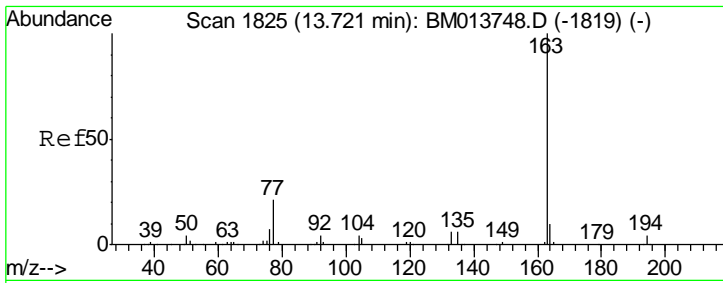
Tgt Ion	Resp	Lower	Upper
94	59900		
65	32.1	28.2	42.4
66	44.7	47.2	70.8#



#15  
 N-Nitroso-di-n-propylamine  
 Concen: 1.390 ng/ul  
 RT: 8.32 min Scan# 907  
 Delta R.T. -0.09 min  
 Lab File: BM013752.D  
 Acq: 24 Jan 2018 04:37

Tgt Ion	Resp	Lower	Upper
70	11166		
42	263.7	76.0	114.0#
101	0.0	6.7	10.1#
130	0.0	14.6	22.0#





#44

Dimethylphthalate

Concen: 7.170 ng/ul

RT: 13.72 min Scan# 1825

Delta R.T. -0.00 min

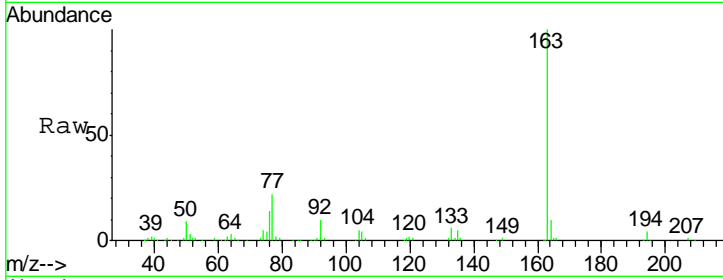
Lab File: BM013752.D

Acq: 24 Jan 2018 04:37

Instrument :

BNA\_M

ClientSampled :



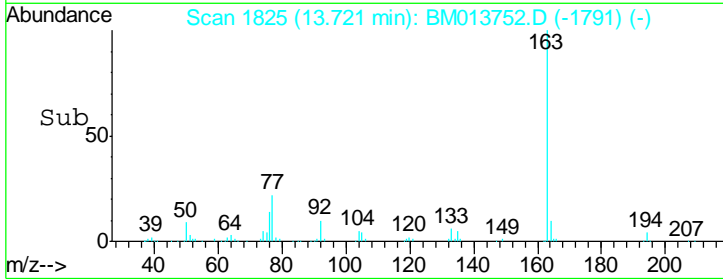
Tot Ion:163 Resp: 231733

Ion Ratio Lower Upper

163 100

194 4.1 3.5 5.3

164 10.5 8.2 12.4



Abundance Ion 163.00 (162.70 to 163.70): E

Ion 194.00 (193.70 to 194.70): E

Ion 164.00 (163.70 to 164.70): E

