

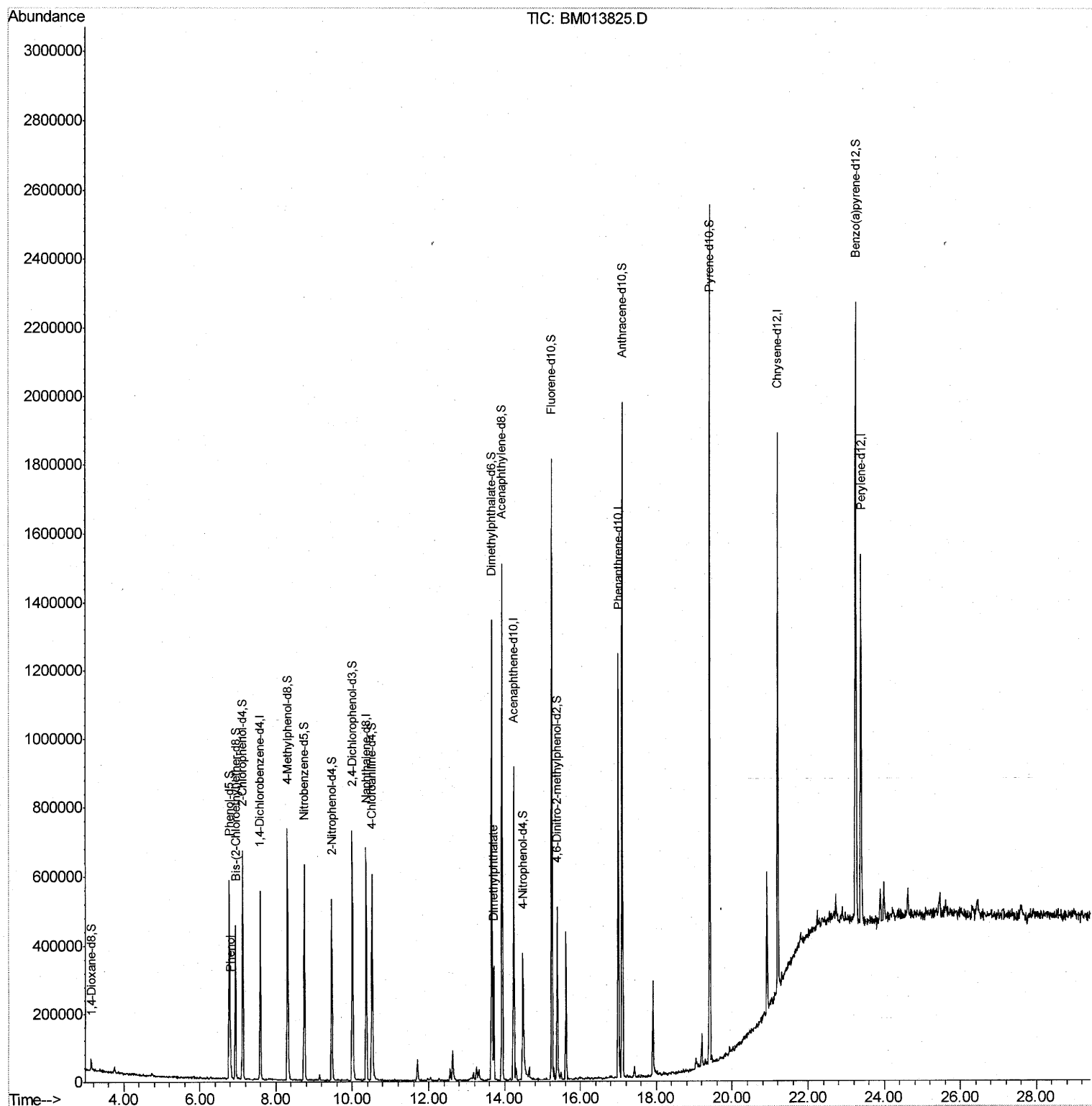
Data Path : Z:\HPCHEM1\BNA M\DATA\BM012518\
Data File : BM013825.D
Acq On : 26 Jan 2018 02:44
Operator : SJ/JU
Sample : J1243-14
Misc :
ALS Vial : 24 Sample Multiplier: 1

Instrument :
BNA_M
Client Sampled :
F6B37

Manual Integrations
APPROVED

Sohil
1/26/2018 4:02:49 PM

Quant Time: Jan 26 03:51:30 2018
Quant Method : Z:\HPCHEM1\BNA M\METHODS\SOM-EPA-BM011018.M
Quant Title : SVOA CALIBRATION
QLast Update : Fri Jan 26 02:50:24 2018
Response via : Initial Calibration



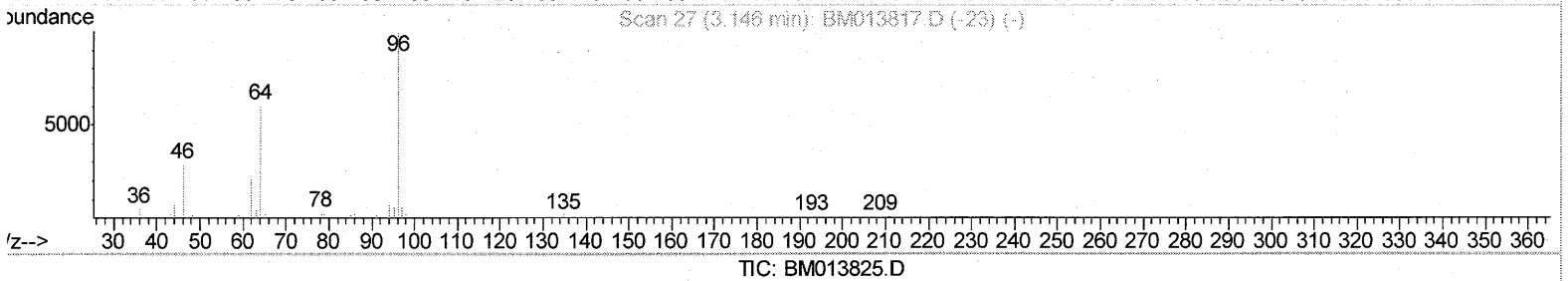
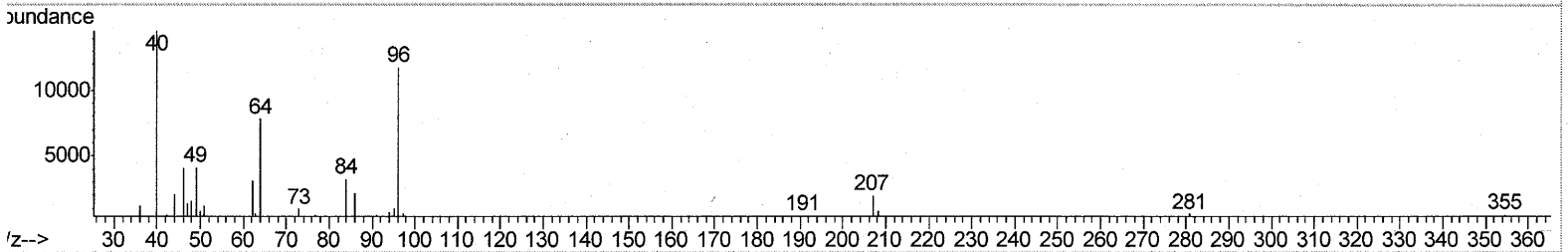
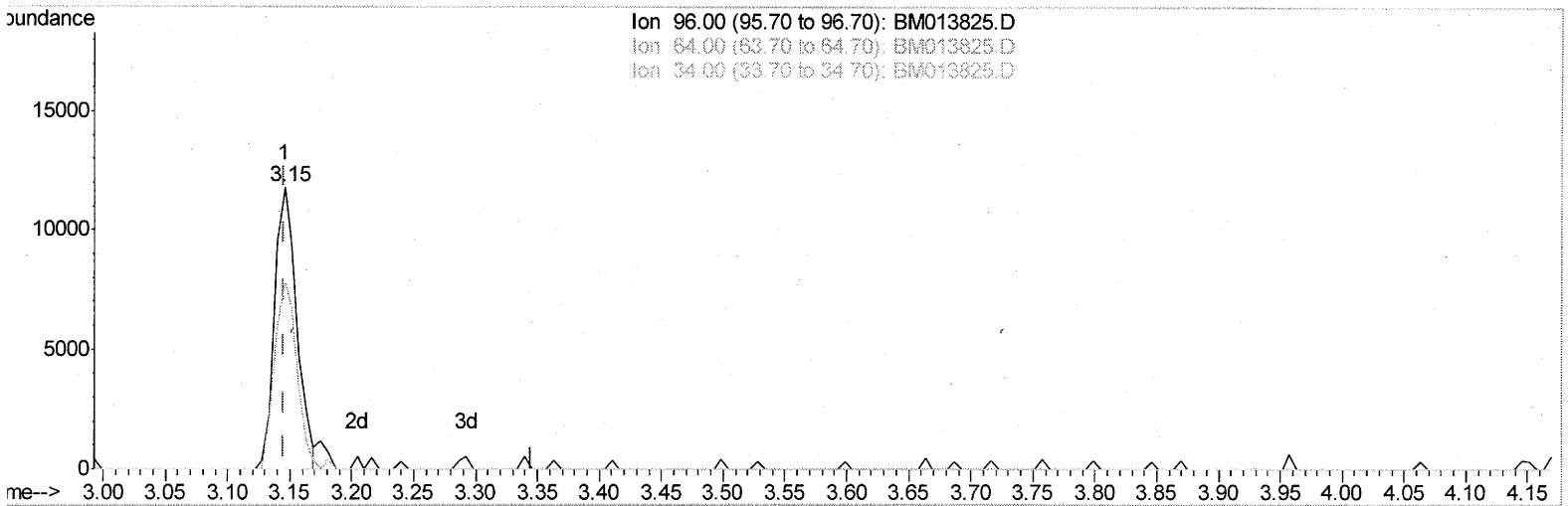
Data Path : Z:\HPCHEM1\BNA M\DATA\BM012518\
 Data File : BM013825.D
 Acq On : 26 Jan 2018 02:44
 Operator : SJ/JU
 Sample : J1243-14
 Misc :
 ALS Vial : 24 Sample Multiplier: 1

Instrument :
 BNA_M
 ClientSampled :
 F6B37

Manual Integrations
 APPROVED

Sohil
 1/26/2018 4:02:49 PM

Quant Time: Jan 26 03:50:26 2018
 Quant Method : Z:\HPCHEM1\BNA M\METHODS\SOM-EPA-BM011018.M
 Quant Title : SVOA CALIBRATION
 QLast Update : Fri Jan 26 02:50:24 2018
 Response via : Initial Calibration



(3) 1,4-Dioxane-d8 (S)
 3.146min (-0.000) 4.20ng/uL
 response 14570

Ion	Exp%	Act%
96.00	100	100
64.00	74.90	66.86
34.00	0.00	0.00
0.00	0.00	0.00

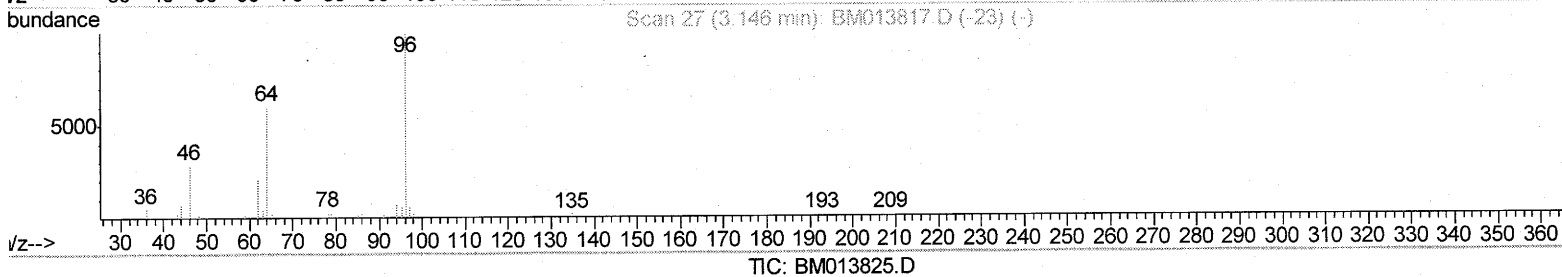
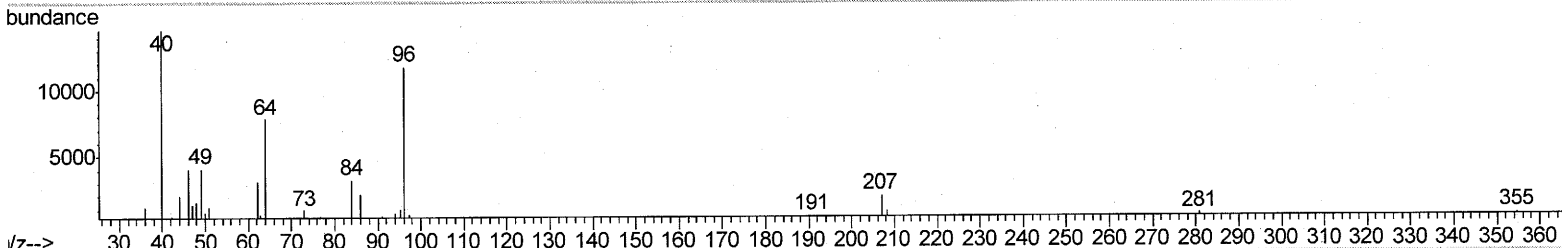
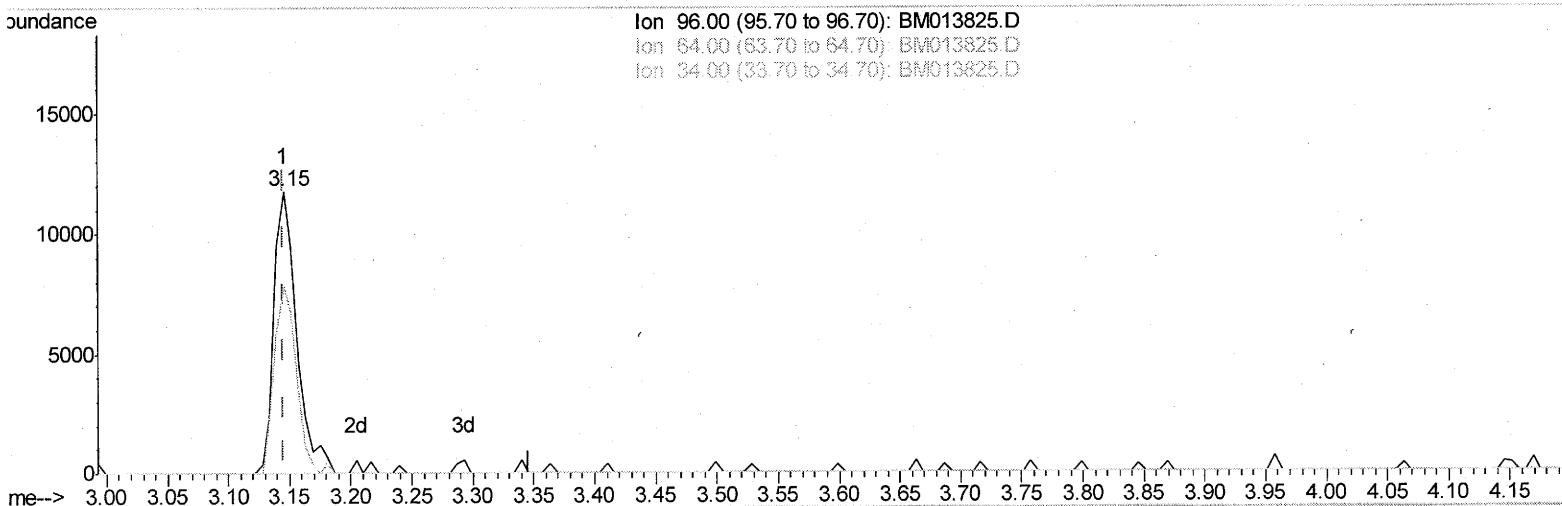
Data Path : Z:\HPCHEM1\BNA M\DATA\BM012518\
 Data File : BM013825.D
 Acq On : 26 Jan 2018 02:44
 Operator : SJ/JU
 Sample : J1243-14
 Misc :
 ALS Vial : 24 Sample Multiplier: 1

Instrument :
 BNA_M
 ClientSampled :
 F6B37

Manual Integrations
 APPROVED

Sohil
 1/26/2018 4:02:49 PM

Quant Time: Jan 26 03:50:26 2018
 Quant Method : Z:\HPCHEM1\BNA M\METHODS\SOM-EPA-BM011018.M
 Quant Title : SVOA CALIBRATION
 QLast Update : Fri Jan 26 02:50:24 2018
 Response via : Initial Calibration



(3) 1,4-Dioxane-d8 (S)

3.146min (-0.000) 4.39ng/uL m

response 15241

Ion	Exp%	Act%
96.00	100	100
64.00	74.90	63.91
34.00	0.00	0.00
0.00	0.00	0.00

Handwritten signature: 549/29/18

Data Path : Z:\HPCHEM1\BNA M\DATA\BM012518\
 Data File : BM013825.D
 Acq On : 26 Jan 2018 02:44
 Operator : SJ/JU
 Sample : J1243-14
 Misc :
 ALS Vial : 24 Sample Multiplier: 1

Instrument :
 BNA_M
 Client Sampled :
 F6B37

Manual Integrations
 APPROVED
 Sohil
 1/26/2018 4:02:49 PM

Quant Time: Jan 26 03:51:30 2018
 Quant Method : Z:\HPCHEM1\BNA M\METHODS\SOM-EPA-BM011018.M
 Quant Title : SVOA CALIBRATION
 QLast Update : Fri Jan 26 02:50:24 2018
 Response via : Initial Calibration

Internal Standards	R.T.	QIon	Response	Conc	Units	Dev(Min)
1) 1,4-Dichlorobenzene-d4	7.59	152	137211	20.00	ng/ul	0.00
18) Naphthalene-d8	10.36	136	524684	20.00	ng/ul	0.00
35) Acenaphthene-d10	14.24	164	298715	20.00	ng/ul	0.00
61) Phenanthrene-d10	17.00	188	697580	20.00	ng/ul	0.00
75) Chrysene-d12	21.20	240	774732	20.00	ng/ul	0.00
83) Perylene-d12	23.39	264	778414	20.00	ng/ul	0.00

System Monitoring Compounds	R.T.	QIon	Response	Conc	Units	Dev(Min)
3) 1,4-Dioxane-d8	3.15	96	15241m	4.39	ng/uL	0.00
5) Phenol-d5	6.78	99	305827	29.03	ng/ul	0.00
7) Bis-(2-Chloroethyl)ether-d	6.93	67	189651	29.72	ng/ul	0.00
9) 2-Chlorophenol-d4	7.13	132	266608	31.06	ng/ul	0.00
13) 4-Methylphenol-d8	8.30	113	252484	31.18	ng/ul	0.00
19) Nitrobenzene-d5	8.75	128	134249	32.97	ng/ul	0.00
22) 2-Nitrophenol-d4	9.46	143	145103	33.73	ng/ul	0.00
26) 2,4-Dichlorophenol-d3	10.00	165	256061	30.81	ng/ul	0.00
29) 4-Chloroaniline-d4	10.52	131	313100	43.42	ng/ul	0.00
43) Dimethylphthalate-d6	13.66	166	817184	33.19	ng/ul	0.00
46) Acenaphthylene-d8	13.93	160	1015377	32.34	ng/ul	0.00
51) 4-Nitrophenol-d4	14.48	143	100087	25.02	ng/ul	0.00
57) Fluorene-d10	15.24	176	691804	31.95	ng/ul	0.00
62) 4,6-Dinitro-2-methylphenol	15.39	200	110945	26.42	ng/ul	0.00
70) Anthracene-d10	17.10	188	1072737	31.57	ng/ul	0.00
76) Pyrene-d10	19.40	212	1234057	34.21	ng/ul	0.00
87) Benzo(a)pyrene-d12	23.25	264	1231510	34.42	ng/ul	0.00

JU 01/29/18

Target Compounds	R.T.	QIon	Response	Conc	Units	Ovalue
6) Phenol	6.80	94	45639	4.320	ng/ul	98
44) Dimethylphthalate	13.71	163	195112	8.060	ng/ul	100

(#) = qualifier out of range (m) = manual integration (+) = signals summed