

Data Path : Z:\HPCHEM1\BNA_M\DATA\BM012716\
 Data File : BM004137.D
 Acq On : 27 Jan 2016 16:49
 Operator : SJ/IZ
 Sample : H1249-05
 Misc :
 ALS Vial : 9 Sample Multiplier: 1

Instrument :
 BNA_M
 ClientSampleId :
 KY038PS038-16025

Quant Time: Jan 28 00:34:19 2016
 Quant Method : Z:\HPCHEM1\BNA_M\METHODS\8270-SIM-BM012216.M
 Quant Title : ASP BNA STANDARDS FOR 5 POINT CALIBRATION
 QLast Update : Fri Jan 22 14:46:41 2016
 Response via : Initial Calibration

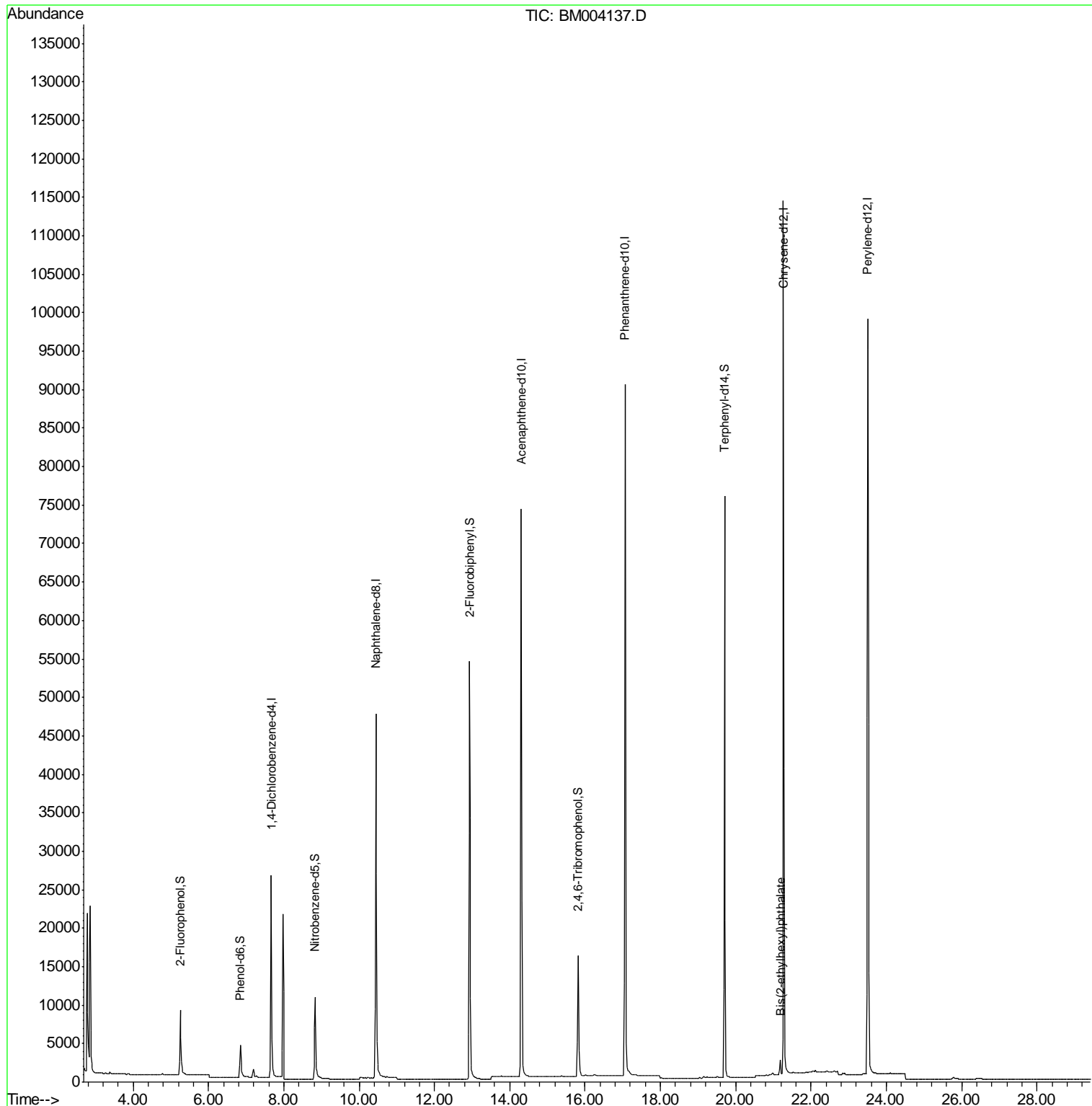
Internal Standards	R.T.	QIon	Response	Conc	Units	Dev(Min)
1) 1,4-Dichlorobenzene-d4	7.67	152	17715	5.00	ng	0.00
7) Naphthalene-d8	10.44	136	77044	5.00	ng	0.00
13) Acenaphthene-d10	14.31	164	48803	5.00	ng	0.00
19) Phenanthrene-d10	17.06	188	140804	5.00	ng	0.00
26) Chrysene-d12	21.27	240	135328	5.00	ng	0.00
35) Perylene-d12	23.51	264	135477	5.00	ng	0.00
System Monitoring Compounds						
4) 2-Fluorophenol	5.25	112	9505	2.57	ng	-0.02
5) Phenol-d6	6.85	99	6620	1.48	ng	0.00
8) Nitrobenzene-d5	8.83	82	12878	3.82	ng	0.00
14) 2,4,6-Tribromophenol	15.81	330	11870	6.26	ng	0.00
15) 2-Fluorobiphenyl	12.93	172	58920	3.94	ng	0.00
29) Terphenyl-d14	19.71	244	85580	4.97	ng	0.00
Target Compounds						Qvalue
33) Bis(2-ethylhexyl)phthalate	21.19	149	2421	0.22	ng	# 97

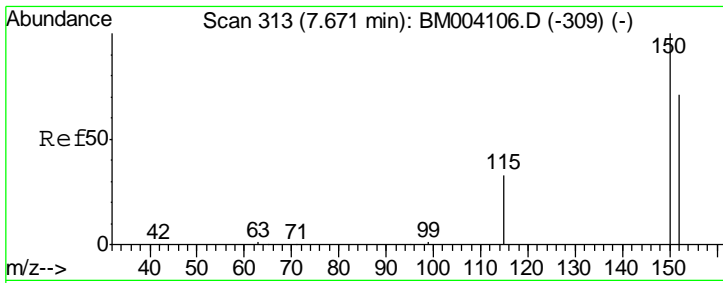
(#) = qualifier out of range (m) = manual integration (+) = signals summed

Data Path : Z:\HPCHEM1\BNA_M\DATA\BM012716\
 Data File : BM004137.D
 Acq On : 27 Jan 2016 16:49
 Operator : SJ/IZ
 Sample : H1249-05
 Misc :
 ALS Vial : 9 Sample Multiplier: 1

Instrument :
 BNA_M
 ClientSampleId :
 KY038PS038-16025

Quant Time: Jan 28 00:34:19 2016
 Quant Method : Z:\HPCHEM1\BNA_M\METHODS\8270-SIM-BM012216.M
 Quant Title : ASP BNA STANDARDS FOR 5 POINT CALIBRATION
 QLast Update : Fri Jan 22 14:46:41 2016
 Response via : Initial Calibration

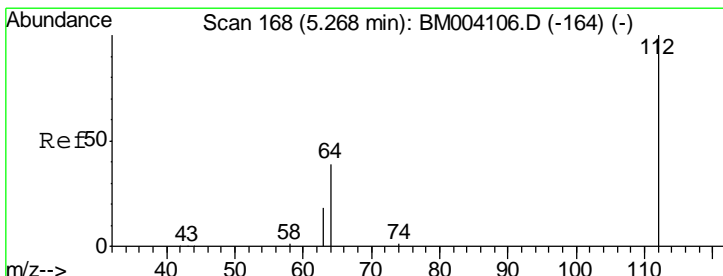
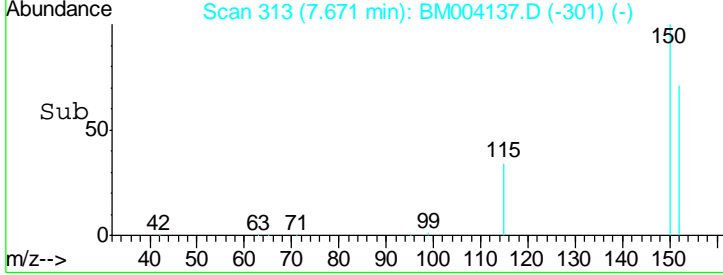
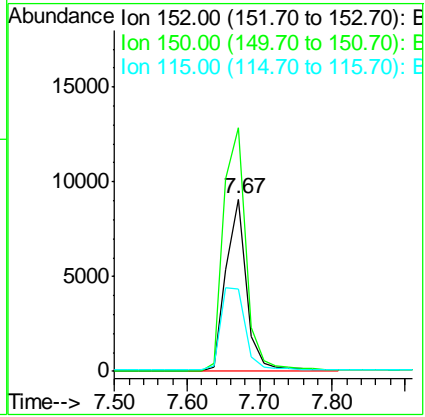
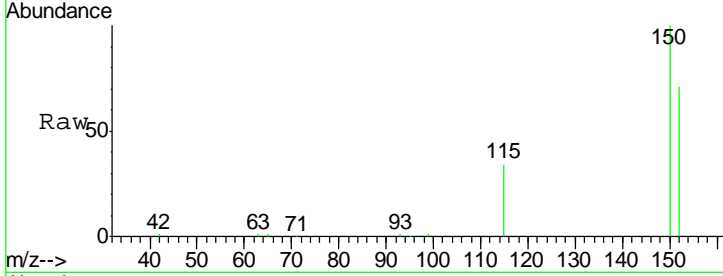




#1
 1,4-Dichlorobenzene-d4
 Concen: 5.00 ng
 RT: 7.67 min Scan# 313
 Delta R.T. -0.00 min
 Lab File: BM004137.D
 Acq: 27 Jan 2016 16:49

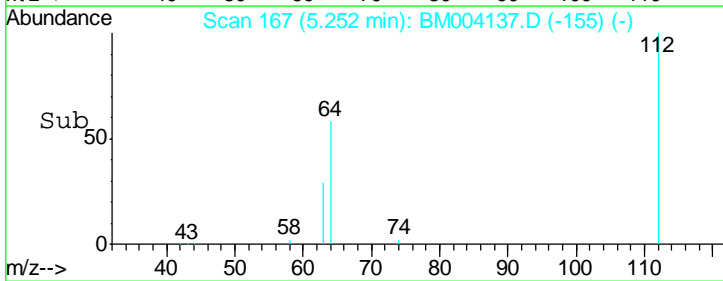
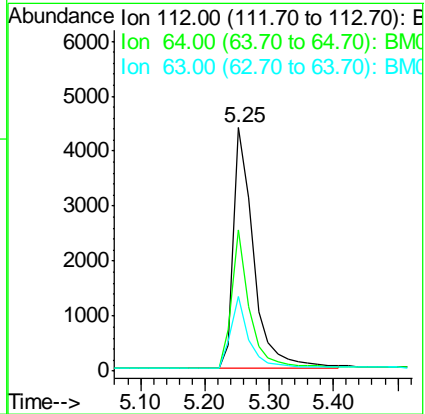
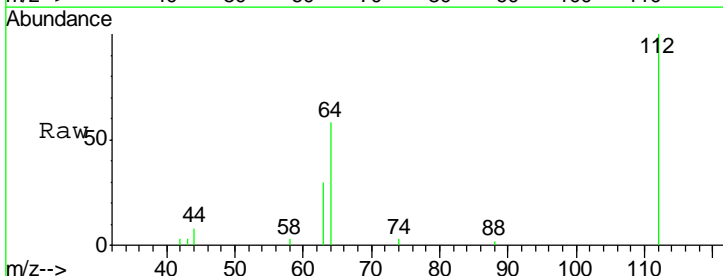
Instrument :
 BNA_M
ClientSampleId :
 KY038PS038-16025

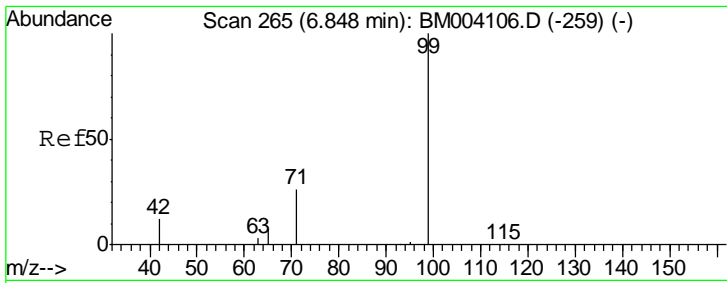
Tgt Ion	Resp	Lower	Upper
152	17715		
150	141.4	122.9	184.3
115	48.0	44.4	66.6



#4
 2-Fluorophenol
 Concen: 2.57 ng
 RT: 5.25 min Scan# 167
 Delta R.T. -0.02 min
 Lab File: BM004137.D
 Acq: 27 Jan 2016 16:49

Tgt Ion	Resp	Lower	Upper
112	9505		
64	52.1	41.8	62.8
63	27.2	22.1	33.1

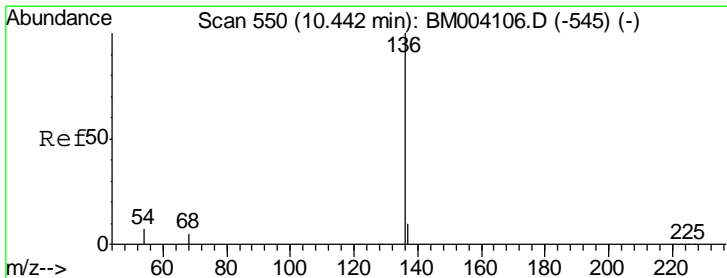
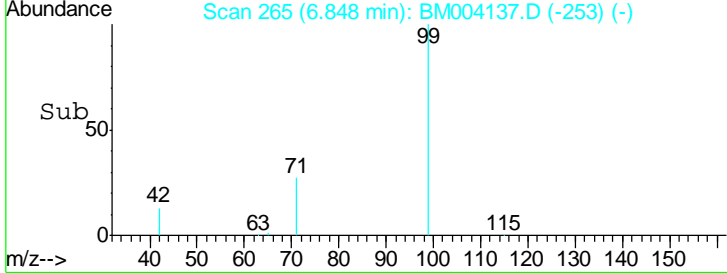
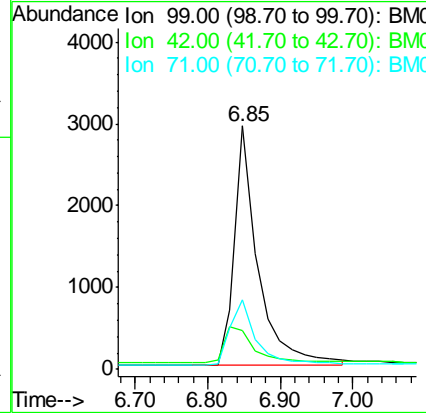
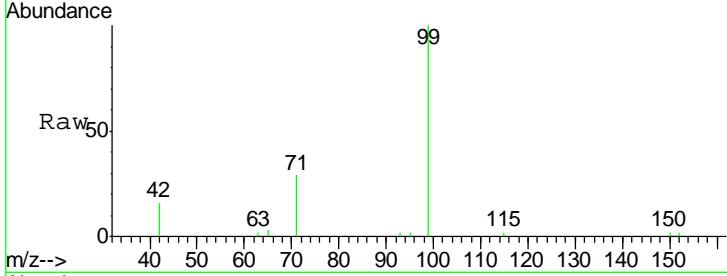




#5
 Phenol-d6
 Concen: 1.48 ng
 RT: 6.85 min Scan# 265
 Delta R.T. -0.00 min
 Lab File: BM004137.D
 Acq: 27 Jan 2016 16:49

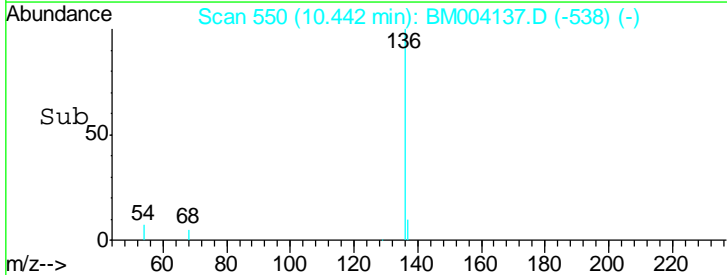
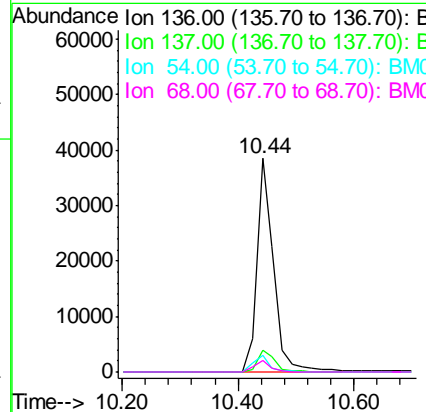
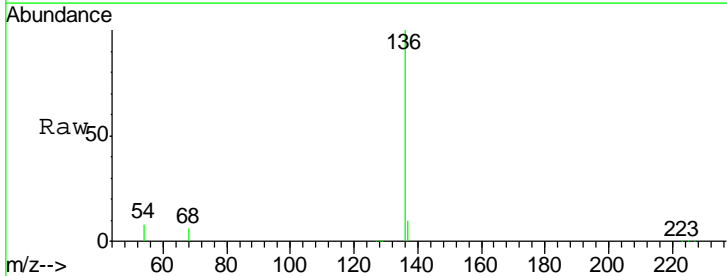
Instrument :
 BNA_M
ClientSampleId :
 KY038PS038-16025

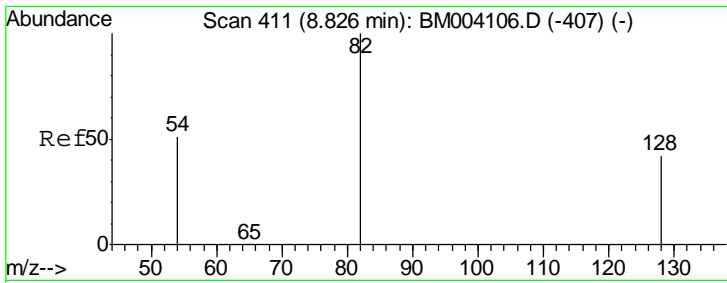
Tgt Ion	Resp	Lower	Upper
99	6620		
42	18.4	16.2	24.2
71	30.5	24.4	36.6



#7
 Naphthalene-d8
 Concen: 5.00 ng
 RT: 10.44 min Scan# 550
 Delta R.T. -0.00 min
 Lab File: BM004137.D
 Acq: 27 Jan 2016 16:49

Tgt Ion	Resp	Lower	Upper
136	77044		
137	10.4	9.2	13.8
54	7.6	2.8	4.2#
68	5.6	2.5	3.7#

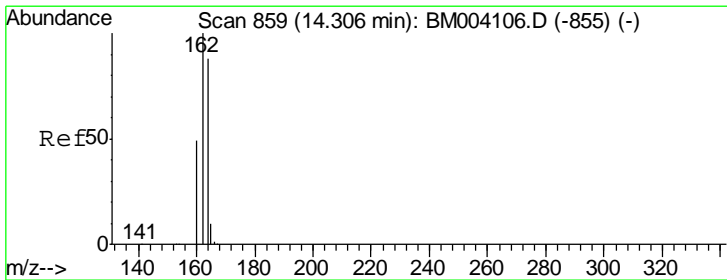
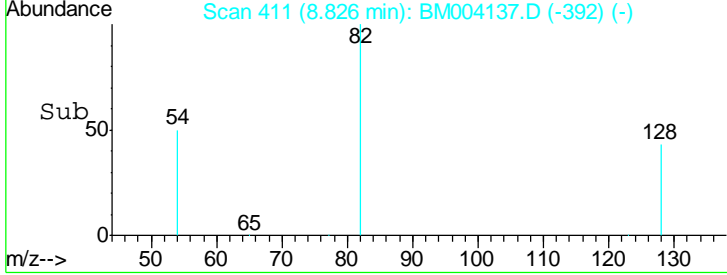
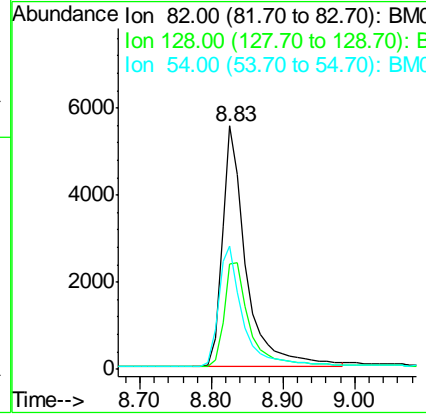
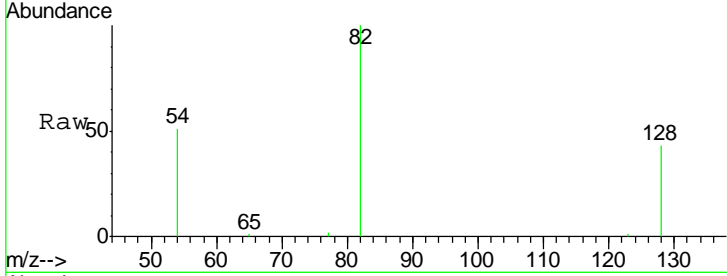




#8
 Nitrobenzene-d5
 Concen: 3.82 ng
 RT: 8.83 min Scan# 411
 Delta R.T. -0.00 min
 Lab File: BM004137.D
 Acq: 27 Jan 2016 16:49

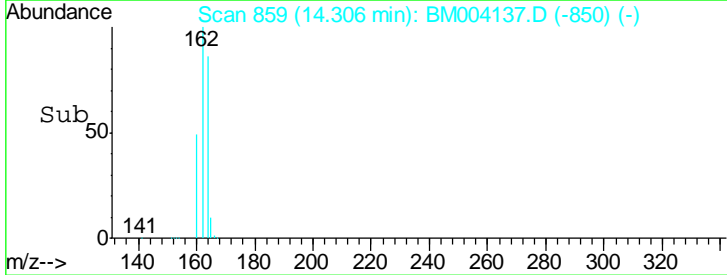
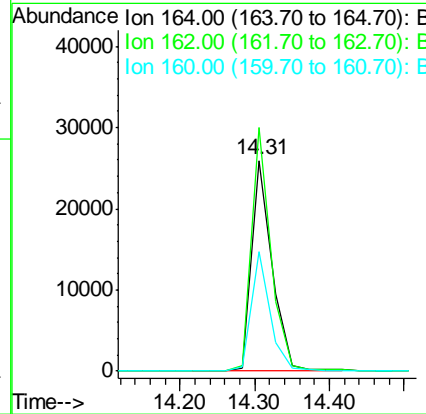
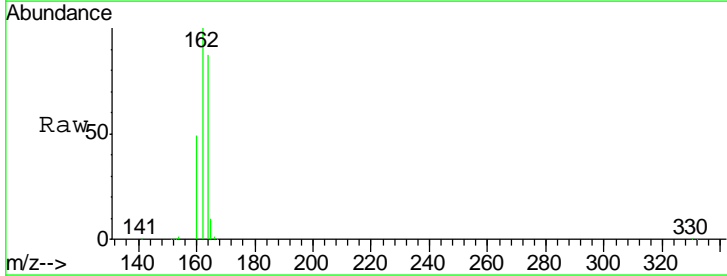
Instrument :
 BNA_M
ClientSampled :
 KY038PS038-16025

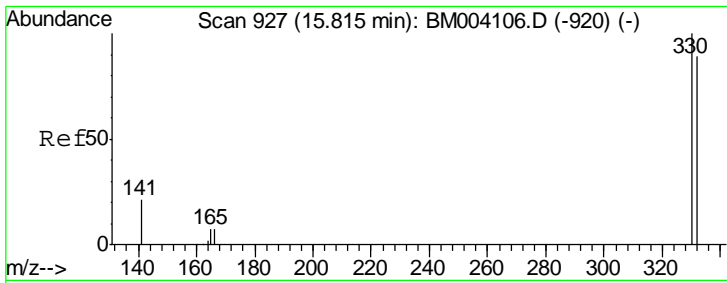
Tgt Ion	Resp	Lower	Upper
82	12878		
128	43.4	39.1	58.7
54	50.8	34.8	52.2



#13
 Acenaphthene-d10
 Concen: 5.00 ng
 RT: 14.31 min Scan# 859
 Delta R.T. -0.00 min
 Lab File: BM004137.D
 Acq: 27 Jan 2016 16:49

Tgt Ion	Resp	Lower	Upper
164	48803		
162	115.6	86.0	129.0
160	56.4	40.3	60.5

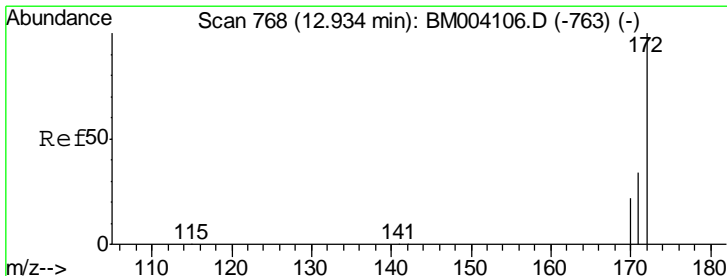
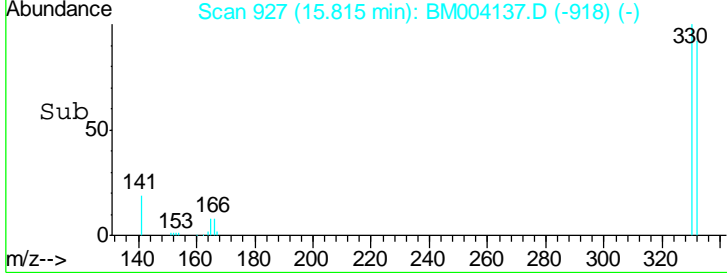
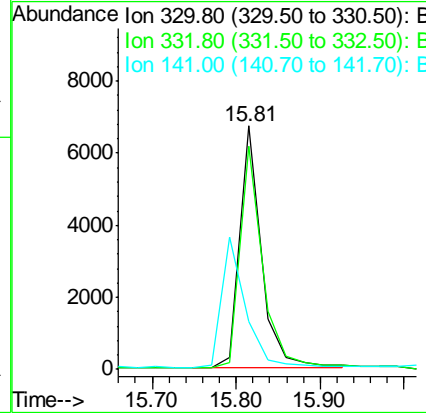
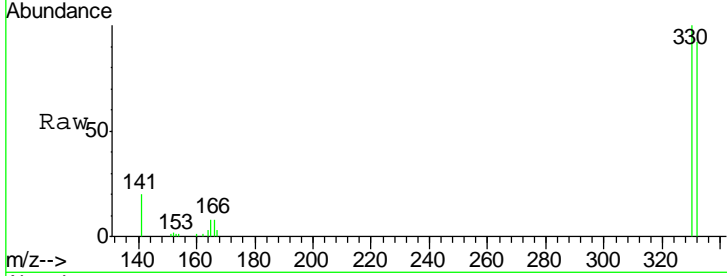




#14
 2,4,6-Tribromophenol
 Concen: 6.26 ng
 RT: 15.81 min Scan# 927
 Delta R.T. -0.00 min
 Lab File: BM004137.D
 Acq: 27 Jan 2016 16:49

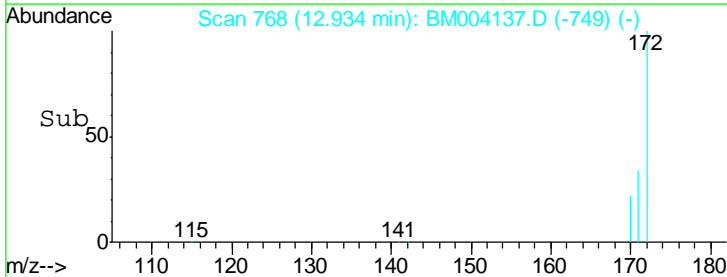
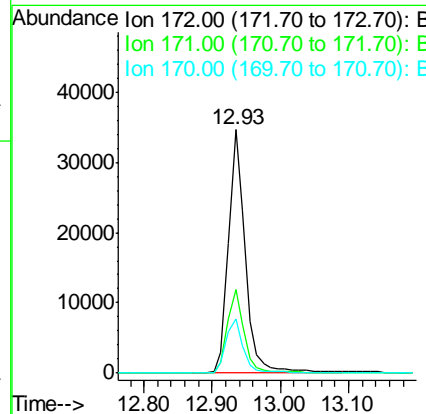
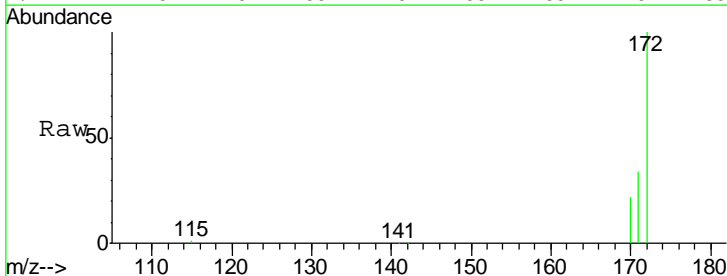
Instrument :
 BNA_M
 ClientSampleId :
 KY038PS038-16025

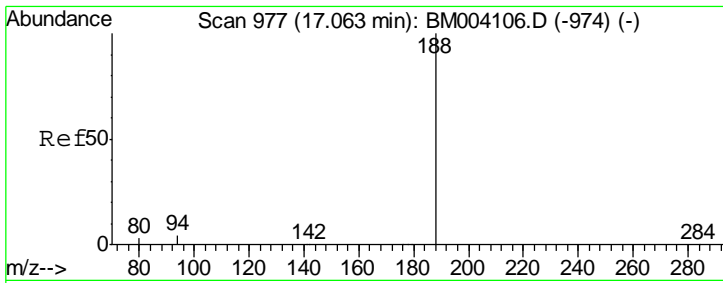
Tgt Ion	Resp	Lower	Upper
330	11870		
332	95.0	79.0	118.4
141	0.0	27.8	41.6#



#15
 2-Fluorobiphenyl
 Concen: 3.94 ng
 RT: 12.93 min Scan# 768
 Delta R.T. -0.00 min
 Lab File: BM004137.D
 Acq: 27 Jan 2016 16:49

Tgt Ion	Resp	Lower	Upper
172	58920		
171	34.3	27.0	40.6
170	22.4	17.9	26.9

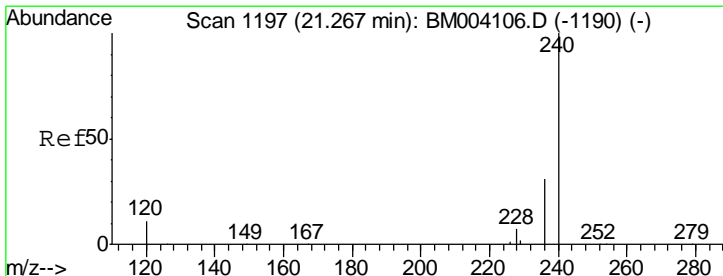
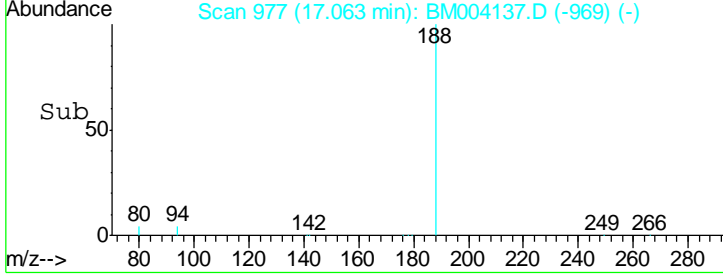
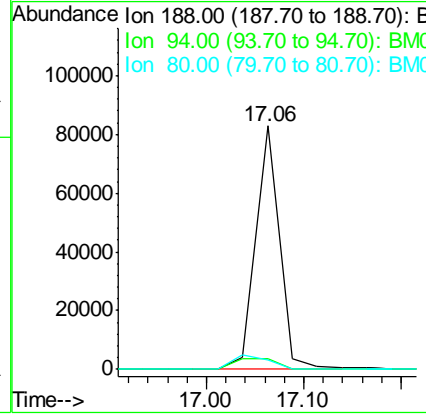
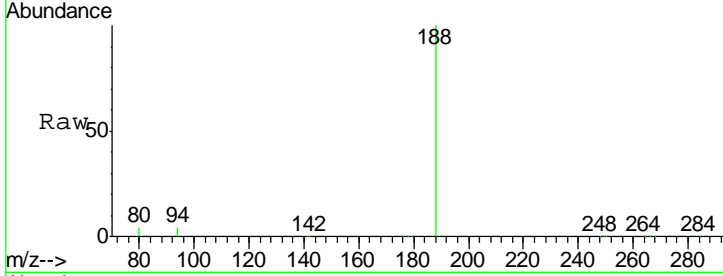




#19
 Phenanthrene-d10
 Concen: 5.00 ng
 RT: 17.06 min Scan# 977
 Delta R.T. -0.00 min
 Lab File: BM004137.D
 Acq: 27 Jan 2016 16:49

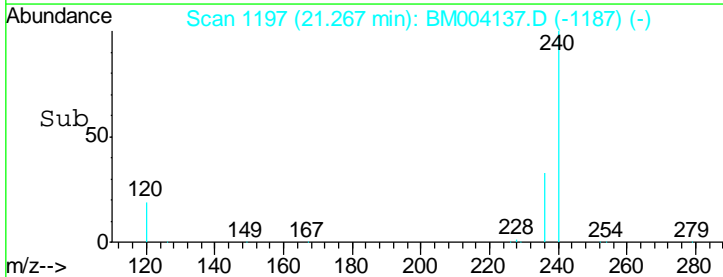
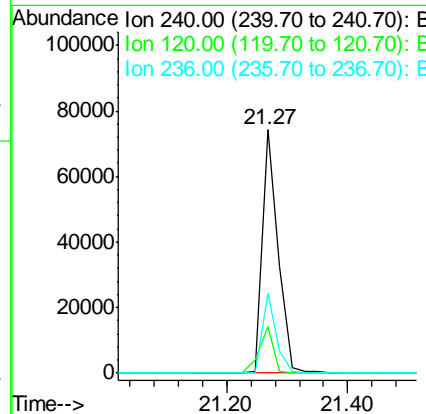
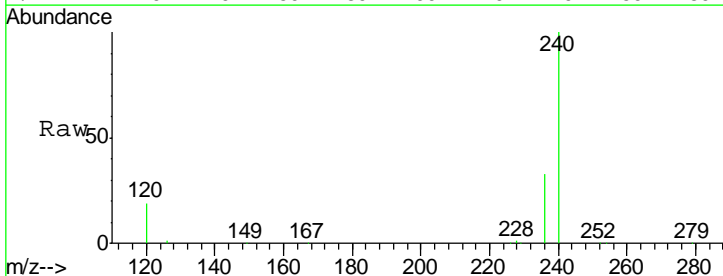
Instrument :
 BNA_M
ClientSampleId :
 KY038PS038-16025

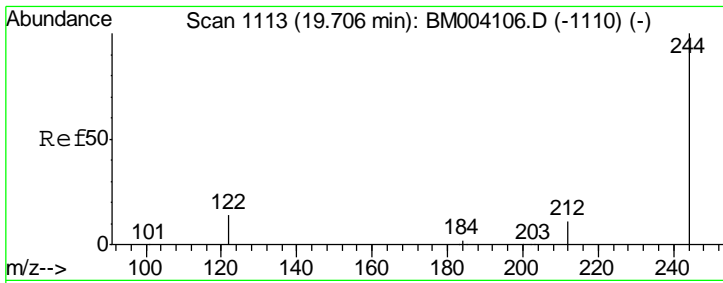
Tgt Ion	Resp	Lower	Upper
188	140804		
94	4.4	20.3	30.5#
80	3.8	22.2	33.4#



#26
 Chrysene-d12
 Concen: 5.00 ng
 RT: 21.27 min Scan# 1197
 Delta R.T. -0.00 min
 Lab File: BM004137.D
 Acq: 27 Jan 2016 16:49

Tgt Ion	Resp	Lower	Upper
240	135328		
120	19.0	0.9	1.3#
236	32.9	17.3	25.9#

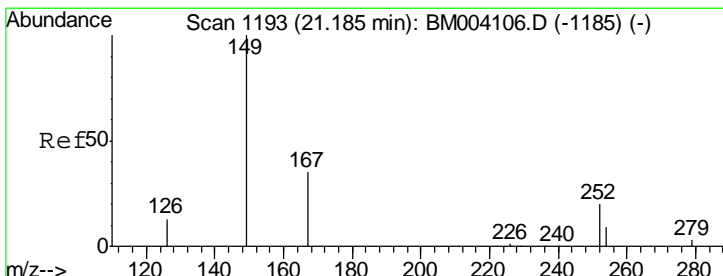
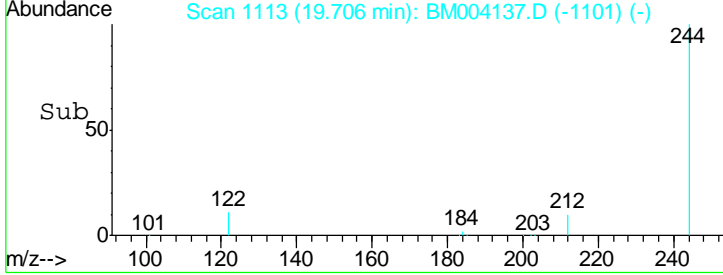
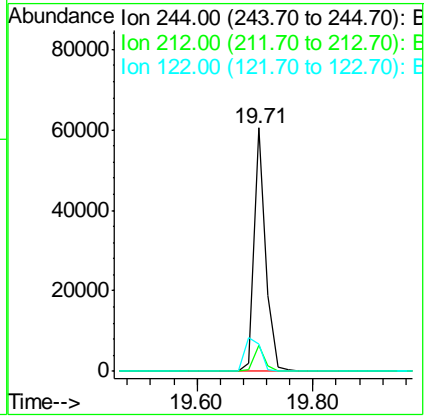
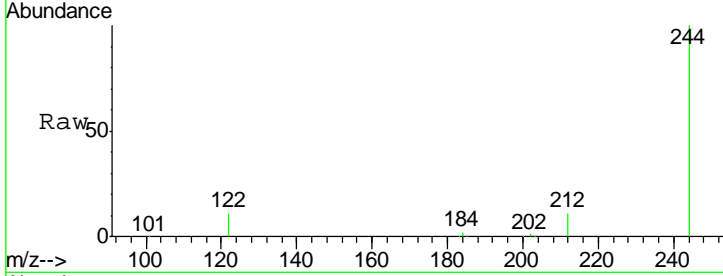




#29
 Terphenyl-d14
 Concen: 4.97 ng
 RT: 19.71 min Scan# 1113
 Delta R.T. 0.00 min
 Lab File: BM004137.D
 Acq: 27 Jan 2016 16:49

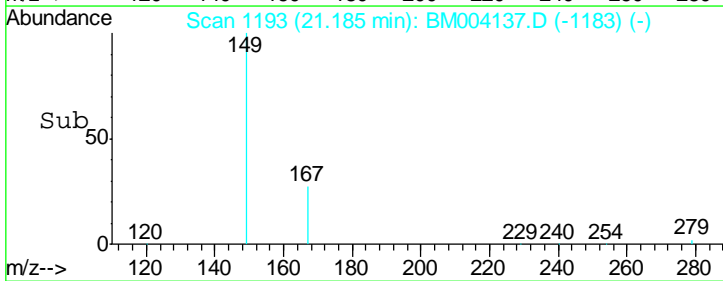
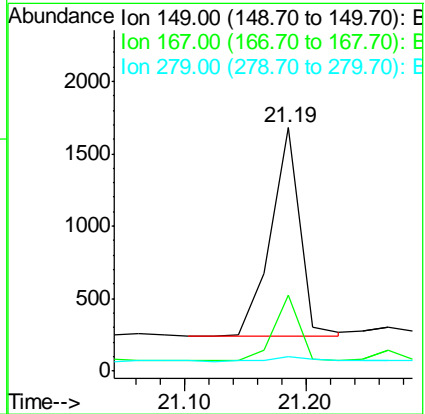
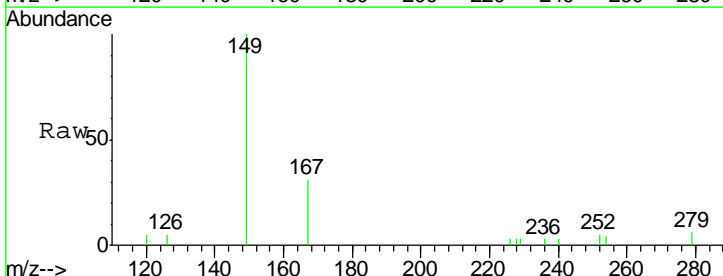
Instrument :
 BNA_M
ClientSampleId :
 KY038PS038-16025

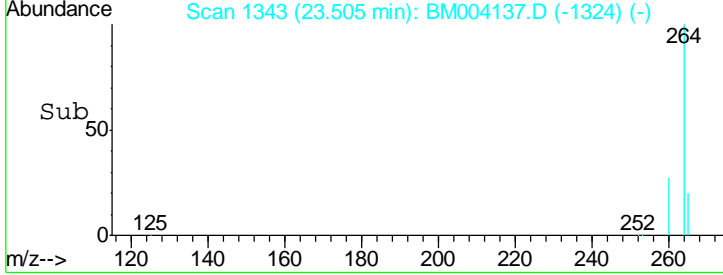
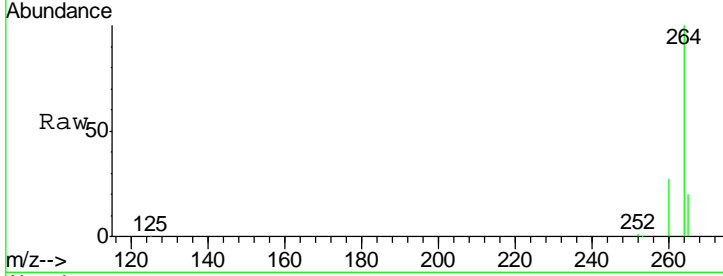
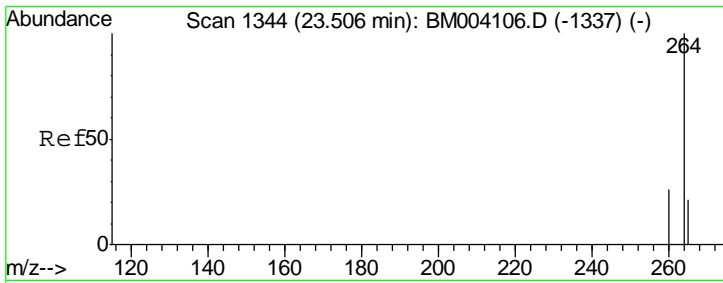
Tgt Ion	Resp	Lower	Upper
244	100		
212	10.6	7.0	10.6#
122	11.0	3.0	4.6#



#33
 Bis(2-ethylhexyl)phthalate
 Concen: 0.22 ng
 RT: 21.19 min Scan# 1193
 Delta R.T. 0.00 min
 Lab File: BM004137.D
 Acq: 27 Jan 2016 16:49

Tgt Ion	Resp	Lower	Upper
149	100		
167	26.9	20.1	30.1
279	2.7	1.8	2.6#





#35
 Perylene-d12
 Concen: 5.00 ng
 RT: 23.51 min Scan# 1343
 Delta R.T. -0.00 min
 Lab File: BM004137.D
 Acq: 27 Jan 2016 16:49

Instrument :
 BNA_M
ClientSampleId :
 KY038PS038-16025

Tgt Ion: 264 Resp: 135477

Ion	Ratio	Lower	Upper
264	100		
260	26.8	21.2	31.8
265	20.3	16.7	25.1

