

Data Path : Z:\HPCHEM1\BNA M\DATA\BM012718\
 Data File : BM013918.D
 Acq On : 28 Jan 2018 12:40
 Operator : SJ/JU
 Sample : SSTDCCC020EC
 Misc :
 ALS Vial : 2 Sample Multiplier: 1

Instrument :
 BNA_M
 ClientSampled :

Quant Time: Jan 29 03:16:22 2018
 Quant Method : Z:\HPCHEM1\BNA M\METHODS\SOM-EPA-BM011018.M
 Quant Title : SVOA CALIBRATION
 QLast Update : Mon Jan 29 03:14:13 2018
 Response via : Initial Calibration

Internal Standards	R.T.	QIon	Response	Conc	Units	Dev(Min)
1) 1,4-Dichlorobenzene-d4	7.58	152	147138	20.00	ng/ul	0.00
18) Naphthalene-d8	10.35	136	582536	20.00	ng/ul	0.00
35) Acenaphthene-d10	14.23	164	343600	20.00	ng/ul	0.00
61) Phenanthrene-d10	16.99	188	770501	20.00	ng/ul	0.00
75) Chrysene-d12	21.19	240	808214	20.00	ng/ul	0.00
83) Perylene-d12	23.37	264	796529	20.00	ng/ul	0.00

System Monitoring Compounds

3) 1,4-Dioxane-d8	3.14	96	21932	5.89	ng/uL	0.00
5) Phenol-d5	6.77	99	208764	18.48	ng/ul	0.00
7) Bis-(2-Chloroethyl)ether-d	6.93	67	127134	18.58	ng/ul	0.00
9) 2-Chlorophenol-d4	7.12	132	178677	19.41	ng/ul	0.00
13) 4-Methylphenol-d8	8.29	113	166969	19.23	ng/ul	0.00
19) Nitrobenzene-d5	8.73	128	84175	18.62	ng/ul	0.00
22) 2-Nitrophenol-d4	9.45	143	92102	19.28	ng/ul	0.00
26) 2,4-Dichlorophenol-d3	9.99	165	185353	20.09	ng/ul	0.00
29) 4-Chloroaniline-d4	10.50	131	186798	23.33	ng/ul	0.00
43) Dimethylphthalate-d6	13.65	166	531874	18.78	ng/ul	0.00
46) Acenaphthylene-d8	13.92	160	693340	19.20	ng/ul	0.00
51) 4-Nitrophenol-d4	14.47	143	72687	15.79	ng/ul	0.00
57) Fluorene-d10	15.23	176	472884	18.99	ng/ul	0.00
62) 4,6-Dinitro-2-methylphenol	15.37	200	80846	17.43	ng/ul	0.00
70) Anthracene-d10	17.09	188	729825	19.45	ng/ul	0.00
76) Pyrene-d10	19.39	212	792167	21.05	ng/ul	0.00
87) Benzo(a)pyrene-d12	23.23	264	736421	20.12	ng/ul	0.00

Target Compounds

Target Compounds	R.T.	QIon	Response	Conc	Units	Ovalue
2) 1,4-Dioxane	3.17	88	25476	6.247	ng/uL#	65
4) Benzaldehyde	6.74	77	158509	20.277	ng/ul	92
6) Phenol	6.79	94	210719	18.599	ng/ul	91
8) Bis(2-Chloroethyl)ether	7.02	93	158326	17.859	ng/ul	94
10) 2-Chlorophenol	7.15	128	172307	18.783	ng/ul	96
11) 2-Methylphenol	8.03	108	157763	18.890	ng/ul	99
12) 2,2'-oxybis(1-Chloropropan	8.12	45	154049	17.077	ng/ul#	76
14) Acetophenone	8.40	105	279687	19.464	ng/ul	89
15) N-Nitroso-di-n-propylamine	8.39	70	139989	19.969	ng/ul#	72
16) 4-Methylphenol	8.36	108	169714	19.005	ng/ul	95
17) Hexachloroethane	8.63	117	85508	19.150	ng/ul	86
20) Nitrobenzene	8.77	77	222955	19.094	ng/ul	97
21) Isophorone	9.30	82	347997	18.445	ng/ul	96
23) 2-Nitrophenol	9.48	139	97888	19.665	ng/ul#	92
24) 2,4-Dimethylphenol	9.55	107	208828	19.899	ng/ul	93
25) Bis(2-Chloroethoxy)methane	9.78	93	211962	18.429	ng/ul	97
27) 2,4-Dichlorophenol	10.01	162	182931	20.572	ng/ul	96
28) Naphthalene	10.40	128	571938	19.735	ng/ul	99
30) 4-Chloroaniline	10.53	127	183385	23.102	ng/ul	96
31) Hexachlorobutadiene	10.68	225	153143	20.981	ng/ul	96
32) Caprolactam	11.31	113	42523	17.190	ng/ul#	26
33) 4-Chloro-3-methylphenol	11.66	107	176145	19.540	ng/ul	100
34) 2-Methylnaphthalene	12.02	142	417527	19.323	ng/ul	93

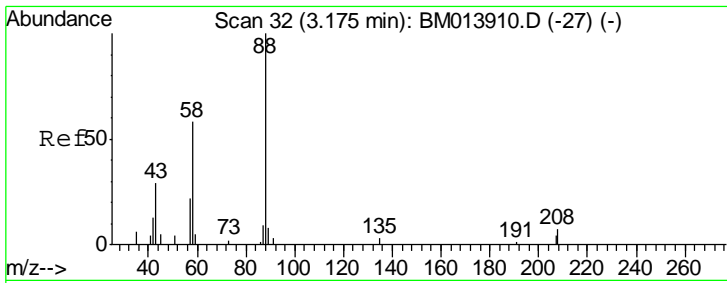
Data Path : Z:\HPCHEM1\BNA M\DATA\BM012718\
 Data File : BM013918.D
 Acq On : 28 Jan 2018 12:40
 Operator : SJ/JU
 Sample : SSTDCCC020EC
 Misc :
 ALS Vial : 2 Sample Multiplier: 1

Instrument :
 BNA_M
 ClientSampleId :

Quant Time: Jan 29 03:16:22 2018
 Quant Method : Z:\HPCHEM1\BNA M\METHODS\SOM-EPA-BM011018.M
 Quant Title : SVOA CALIBRATION
 QLast Update : Mon Jan 29 03:14:13 2018
 Response via : Initial Calibration

Internal Standards	R.T.	QIon	Response	Conc	Units	Dev(Min)
36) 1,2,4,5-Tetrachlorobenzene	12.40	216	259289	20.366	ng/ul#	92
37) Hexachlorocyclopentadiene	12.37	237	84476	15.982	ng/ul	94
38) 2,4,6-Trichlorophenol	12.65	196	150701	20.449	ng/ul	97
39) 2,4,5-Trichlorophenol	12.73	196	161731	21.091	ng/ul	96
40) 1,1'-Biphenyl	13.06	154	545288	19.065	ng/ul	98
41) 2-Chloronaphthalene	13.10	162	447355	20.009	ng/ul	99
42) 2-Nitroaniline	13.32	65	119821	19.428	ng/ul	97
44) Dimethylphthalate	13.70	163	512688	18.413	ng/ul	99
45) 2,6-Dinitrotoluene	13.83	165	106413	19.722	ng/ul	94
47) Acenaphthylene	13.95	152	630640	19.086	ng/ul	97
48) 3-Nitroaniline	14.16	138	85547	20.160	ng/ul	90
49) Acenaphthene	14.30	153	431317	18.848	ng/ul	99
50) 2,4-Dinitrophenol	14.38	184	35007	11.318	ng/ul#	86
52) 4-Nitrophenol	14.48	109	77544	16.586	ng/ul#	80
53) Dibenzofuran	14.63	168	646441	18.778	ng/ul	100
54) 2,4-Dinitrotoluene	14.63	165	148489	18.879	ng/ul#	79
55) 2,3,4,6-Tetrachlorophenol	14.87	232	145140	20.123	ng/ul	93
56) Diethylphthalate	15.07	149	518592	18.507	ng/ul	96
58) Fluorene	15.29	166	534180	18.943	ng/ul	96
59) 4-Chlorophenyl-phenylether	15.29	204	285711	18.751	ng/ul	98
60) 4-Nitroaniline	15.33	138	85765	17.274	ng/ul	88
63) 4,6-Dinitro-2-methylphenol	15.39	198	77129	15.756	ng/ul#	96
64) N-Nitrosodiphenylamine	15.50	169	447365	19.741	ng/ul	98
65) 4-Bromophenyl-phenylether	16.18	248	176538	19.399	ng/ul	94
66) Hexachlorobenzene	16.29	284	192689	19.671	ng/ul#	94
67) Atrazine	16.46	200	173430	19.175	ng/ul	94
68) Pentachlorophenol	16.64	266	93896	18.038	ng/ul	95
69) Phenanthrene	17.03	178	821418	19.179	ng/ul	99
71) Anthracene	17.12	178	841112	19.040	ng/ul	97
72) Carbazole	17.40	167	678598	18.609	ng/ul	99
73) Di-n-butylphthalate	17.96	149	838076	19.542	ng/ul	99
74) Fluoranthene	19.05	202	960577	18.789	ng/ul#	96
77) Pyrene	19.42	202	1001591	20.385	ng/ul#	95
78) Butylbenzylphthalate	20.33	149	368468	21.289	ng/ul	95
79) 3,3'-Dichlorobenzidine	21.11	252	297740	22.269	ng/ul	94
80) Benzo(a)anthracene	21.17	228	984223	20.153	ng/ul	97
81) Bis(2-ethylhexyl)phthalate	21.11	149	527552	20.316	ng/ul#	99
82) Chrysene	21.22	228	878621	19.611	ng/ul	98
84) Di-n-octyl phthalate	21.97	149	862009	17.958	ng/ul	99
85) Benzo(b)fluoranthene	22.72	252	984164	20.119	ng/ul#	99
86) Benzo(k)fluoranthene	22.76	252	897499	18.982	ng/ul#	99
88) Benzo(a)pyrene	23.28	252	914308	19.786	ng/ul#	97
89) Indeno(1,2,3-cd)pyrene	25.56	276	1061944	19.468	ng/ul	98
90) Dibenzo(a,h)anthracene	25.56	278	902325	19.588	ng/ul#	98
91) Benzo(g,h,i)perylene	26.23	276	890879	19.844	ng/ul	99

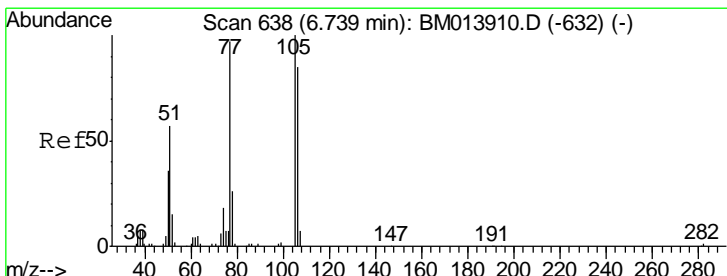
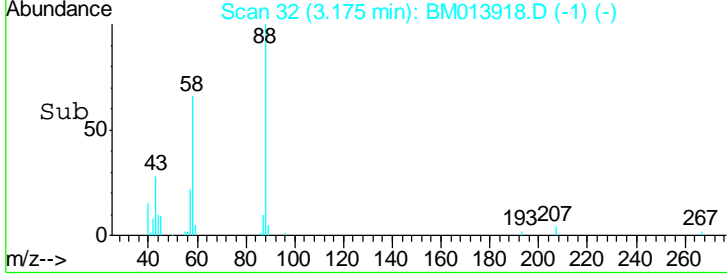
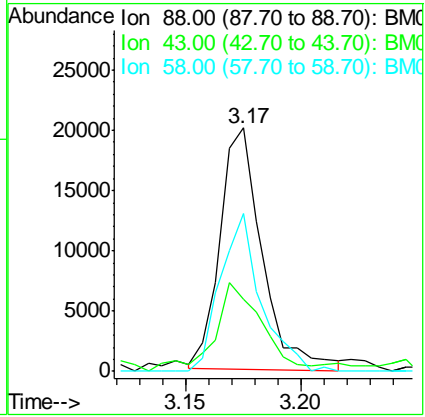
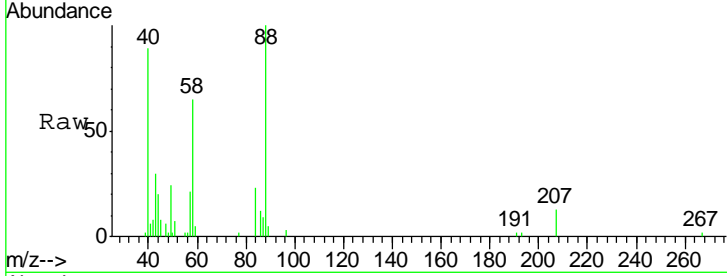
(#) = qualifier out of range (m) = manual integration (+) = signals summed



#2
 1,4-Dioxane
 Concen: 6.247 ng/uL
 RT: 3.17 min Scan# 32
 Delta R.T. -0.00 min
 Lab File: BM013918.D
 Acq: 28 Jan 2018 12:40

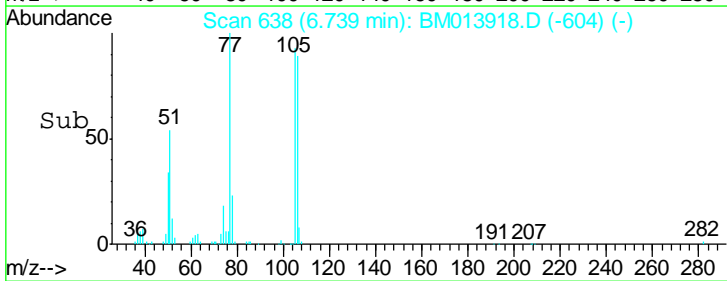
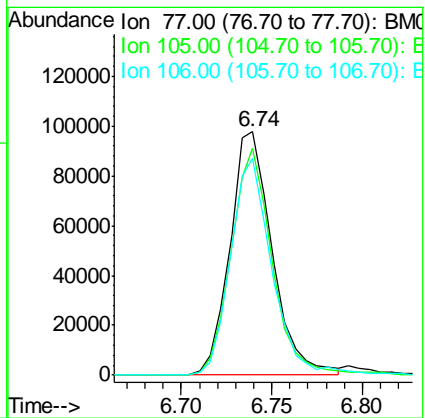
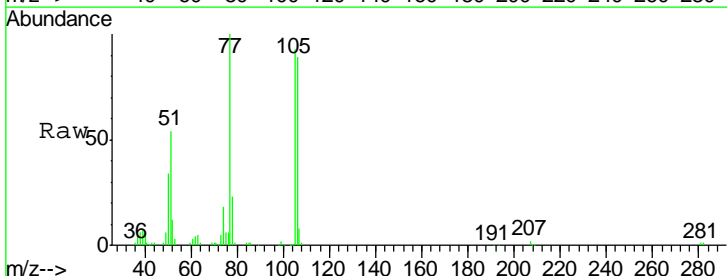
Instrument :
 BNA_M
 ClientSampled :

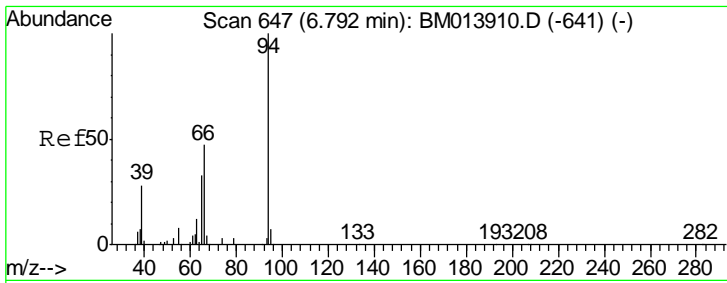
Tgt Ion	Resp	Lower	Upper
88	100		
43	38.0	48.0	72.0#
58	62.1	80.0	120.0#



#4
 Benzaldehyde
 Concen: 20.277 ng/ul
 RT: 6.74 min Scan# 638
 Delta R.T. -0.00 min
 Lab File: BM013918.D
 Acq: 28 Jan 2018 12:40

Tgt Ion	Resp	Lower	Upper
77	100		
105	93.4	66.1	99.1
106	89.0	67.8	101.6

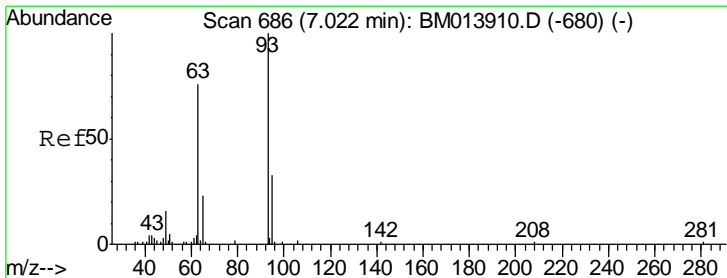
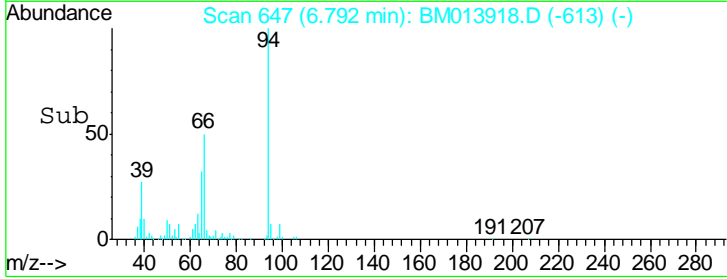
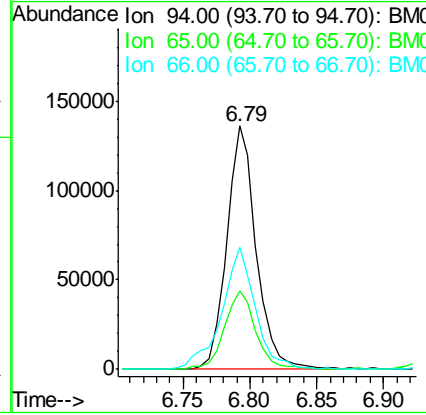
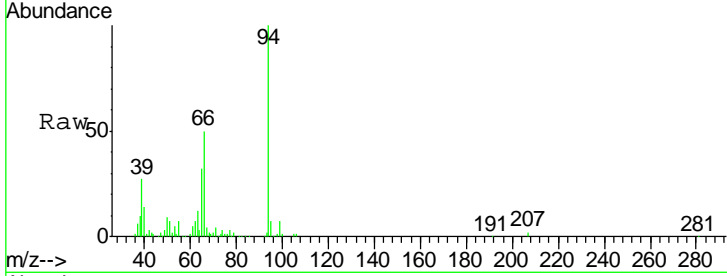




#6
 Phenol
 Concen: 18.599 ng/ul
 RT: 6.79 min Scan# 647
 Delta R.T. -0.00 min
 Lab File: BM013918.D
 Acq: 28 Jan 2018 12:40

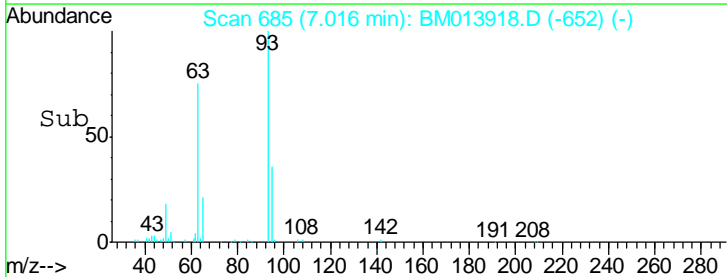
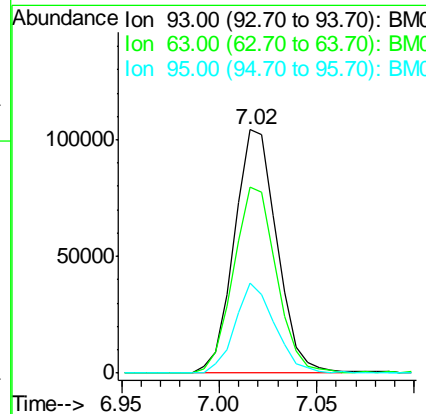
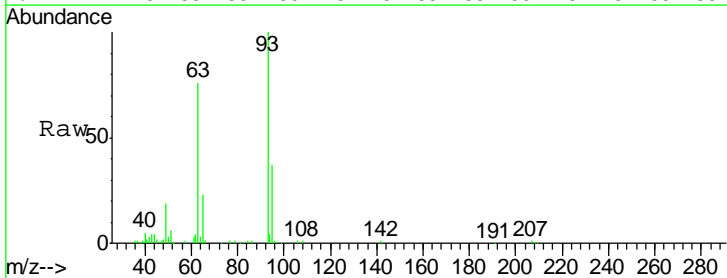
Instrument :
 BNA_M
 ClientSampled :

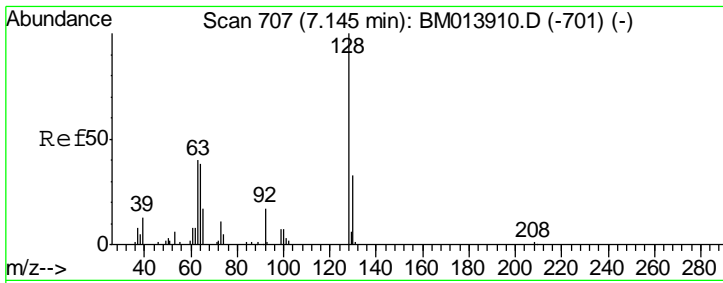
Tgt Ion	Resp	Lower	Upper
94	210719		
65	32.3	28.2	42.4
66	50.1	47.2	70.8



#8
 Bis(2-Chloroethyl)ether
 Concen: 17.859 ng/ul
 RT: 7.02 min Scan# 685
 Delta R.T. -0.01 min
 Lab File: BM013918.D
 Acq: 28 Jan 2018 12:40

Tgt Ion	Resp	Lower	Upper
93	158326		
63	76.3	57.3	85.9
95	37.2	26.6	39.8

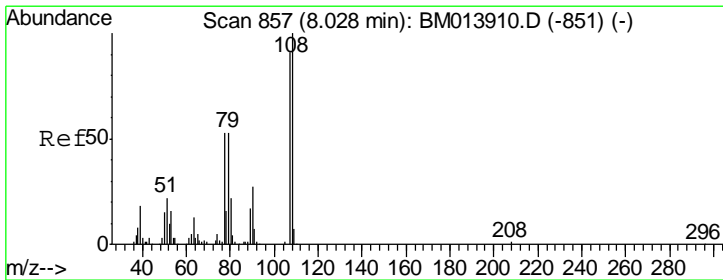
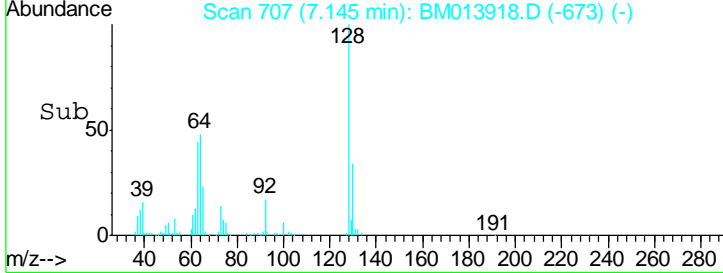
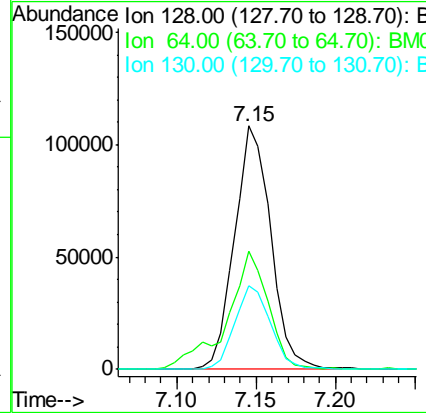
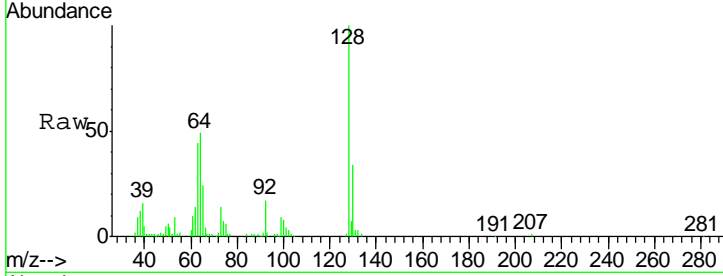




#10
 2-Chlorophenol
 Concen: 18.783 ng/ul
 RT: 7.15 min Scan# 707
 Delta R.T. -0.00 min
 Lab File: BM013918.D
 Acq: 28 Jan 2018 12:40

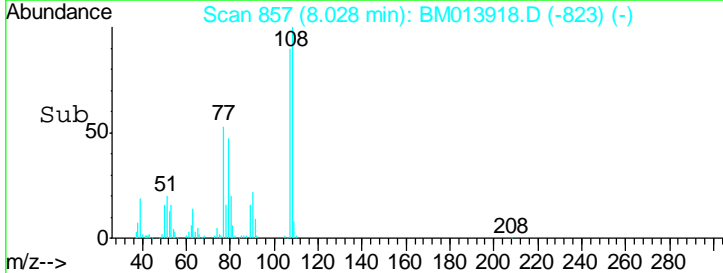
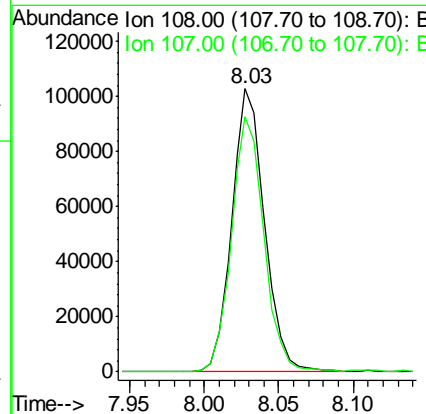
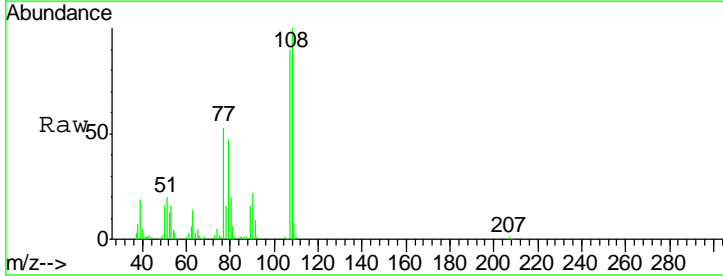
Instrument :
 BNA_M
 ClientSampled :

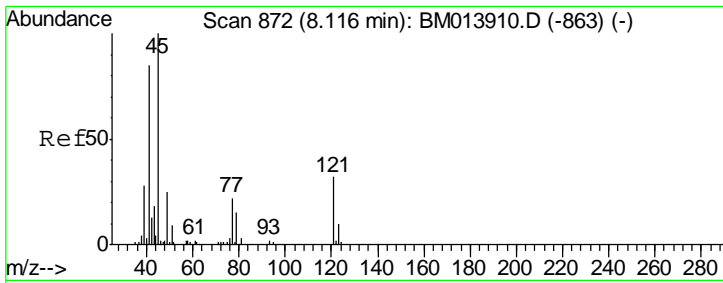
Tgt Ion	Resp	Lower	Upper
128	172307		
64	48.5	38.0	57.0
130	34.4	24.4	36.6



#11
 2-Methylphenol
 Concen: 18.890 ng/ul
 RT: 8.03 min Scan# 857
 Delta R.T. -0.00 min
 Lab File: BM013918.D
 Acq: 28 Jan 2018 12:40

Tgt Ion	Resp	Lower	Upper
108	157763		
107	90.2	72.6	108.8

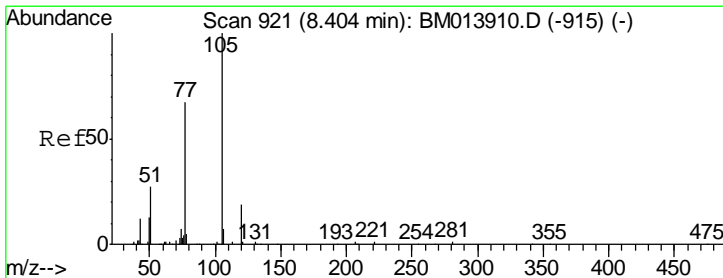
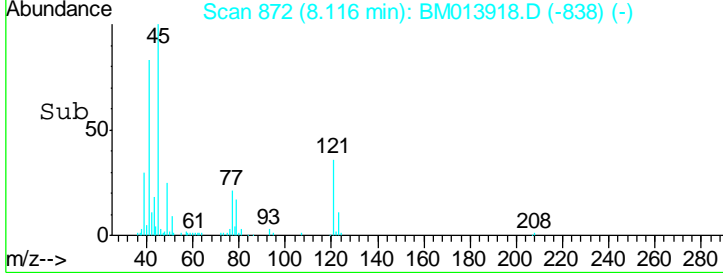
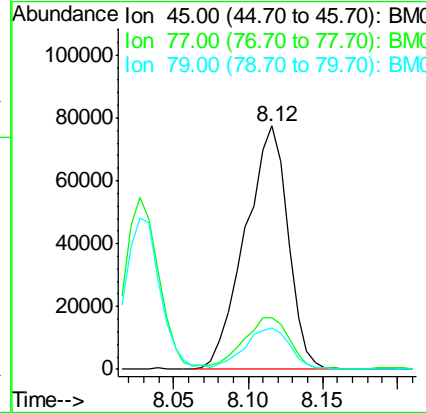
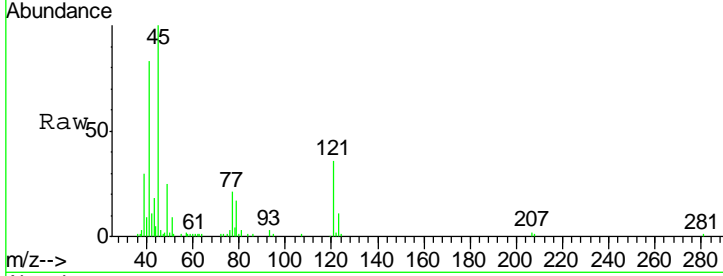




#12
 2,2'-oxybis(1-Chloropropane)
 Concen: 17.077 ng/ul
 RT: 8.12 min Scan# 872
 Delta R.T. -0.00 min
 Lab File: BM013918.D
 Acq: 28 Jan 2018 12:40

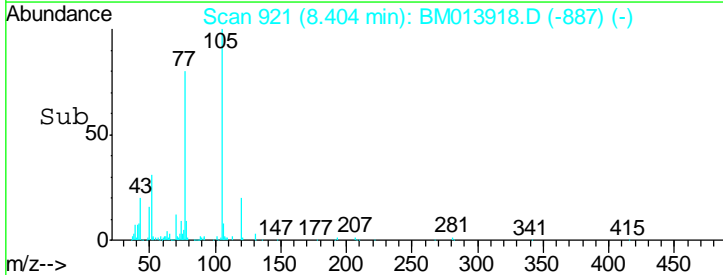
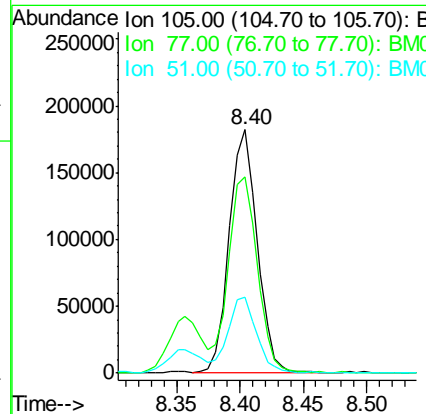
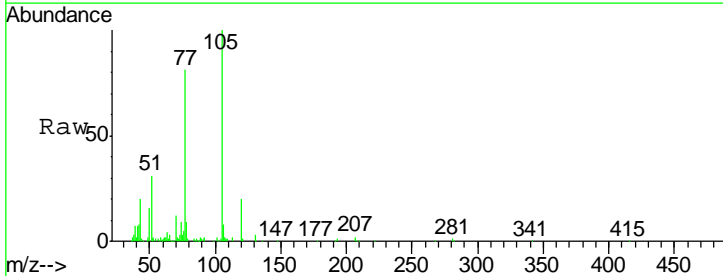
Instrument :
 BNA_M
 ClientSampled :

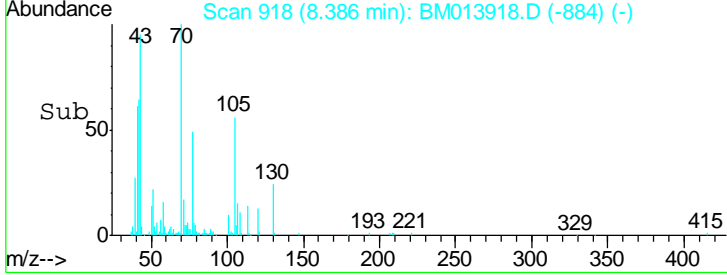
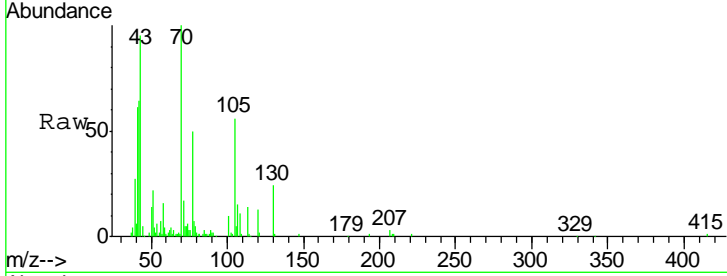
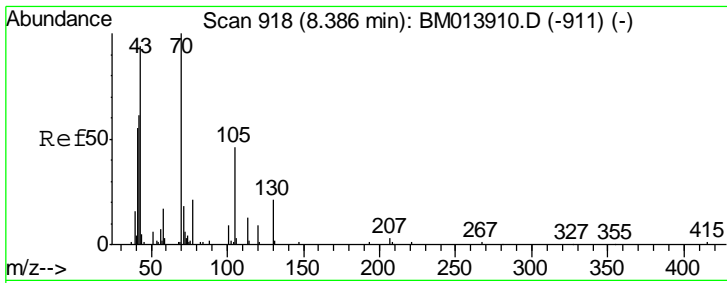
Tgt Ion	Resp	Lower	Upper
45	154049		
77	21.3	8.0	12.0#
79	16.8	8.0	12.0#



#14
 Acetophenone
 Concen: 19.464 ng/ul
 RT: 8.40 min Scan# 921
 Delta R.T. -0.00 min
 Lab File: BM013918.D
 Acq: 28 Jan 2018 12:40

Tgt Ion	Resp	Lower	Upper
105	279687		
77	80.5	74.2	111.4
51	31.3	23.4	35.2

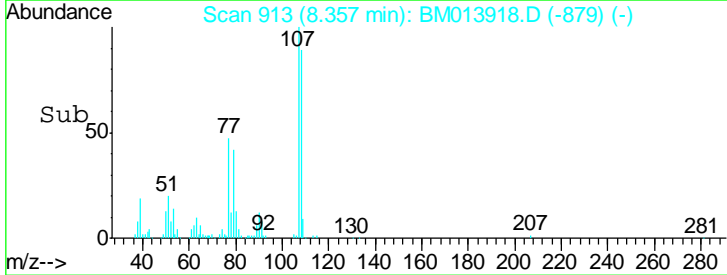
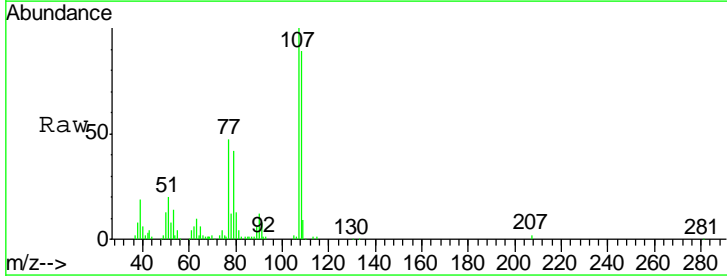
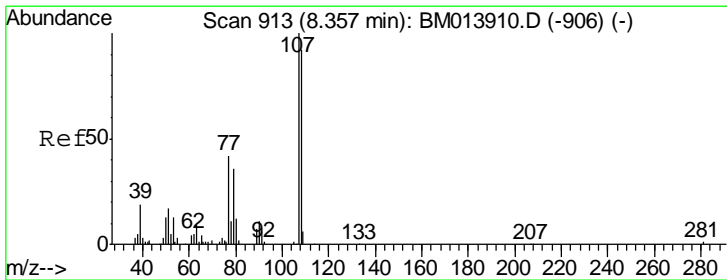
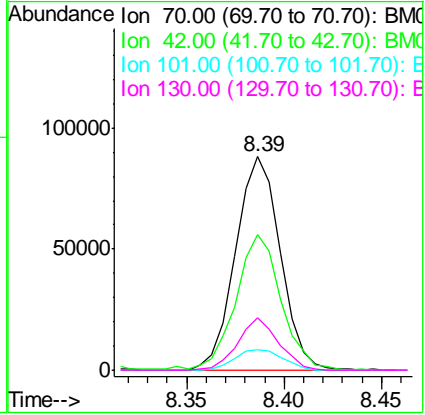




#15
 N-Nitroso-di-n-propylamine
 Concen: 19.969 ng/ul
 RT: 8.39 min Scan# 918
 Delta R.T. -0.00 min
 Lab File: BM013918.D
 Acq: 28 Jan 2018 12:40

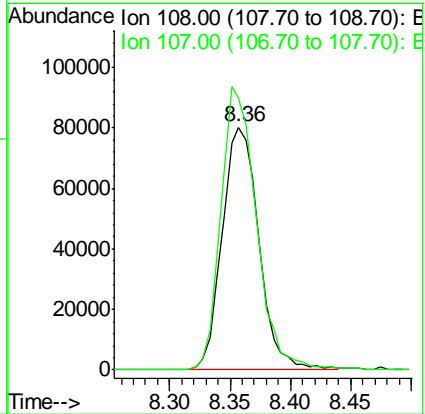
Instrument :
 BNA_M
 ClientSampled :

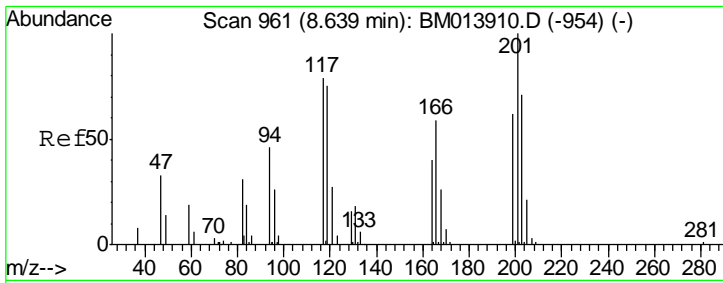
Tgt Ion	Resp	Lower	Upper
70	139989		
42	63.7	76.0	114.0#
101	9.9	6.7	10.1
130	24.5	14.6	22.0#



#16
 4-Methylphenol
 Concen: 19.005 ng/ul
 RT: 8.36 min Scan# 913
 Delta R.T. -0.00 min
 Lab File: BM013918.D
 Acq: 28 Jan 2018 12:40

Tgt Ion	Resp	Lower	Upper
108	169714		
107	111.8	84.9	127.3

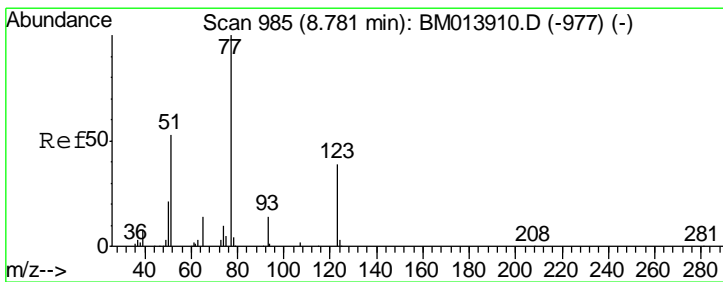
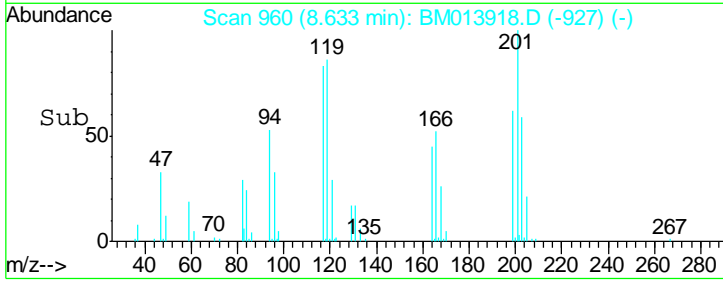
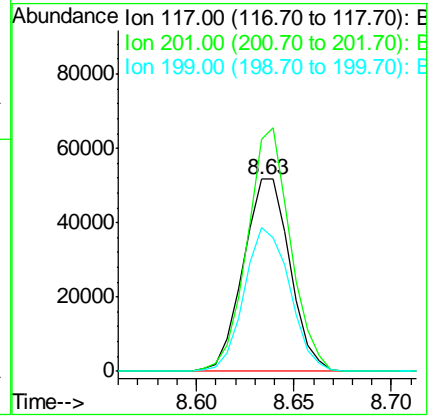
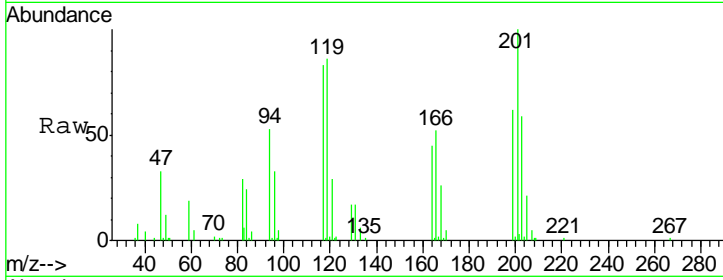




#17
 Hexachloroethane
 Concen: 19.150 ng/ul
 RT: 8.63 min Scan# 960
 Delta R.T. -0.01 min
 Lab File: BM013918.D
 Acq: 28 Jan 2018 12:40

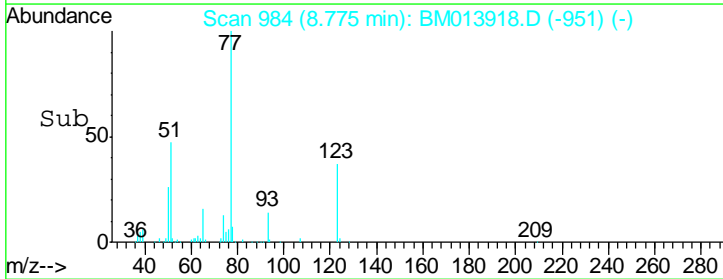
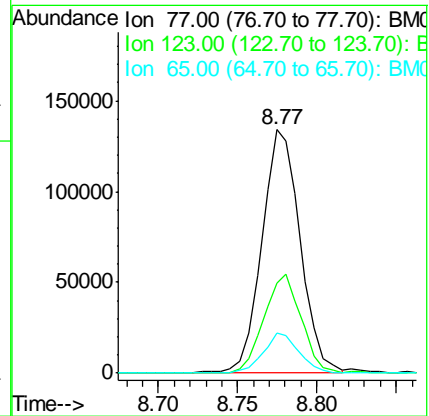
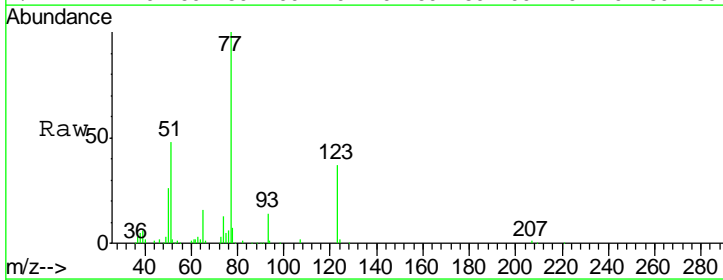
Instrument :
 BNA_M
 ClientSampled :

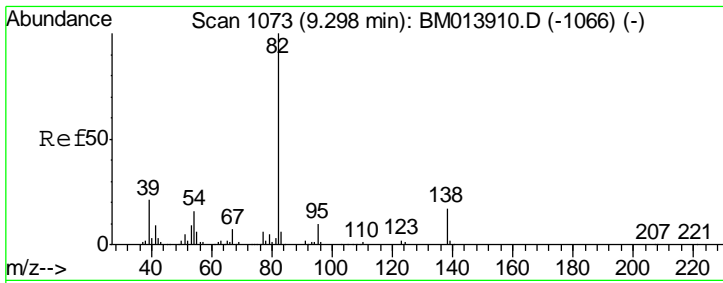
Tgt Ion	Resp	Lower	Upper
117	100		
201	120.8	111.6	167.4
199	74.5	67.8	101.6



#20
 Nitrobenzene
 Concen: 19.094 ng/ul
 RT: 8.77 min Scan# 984
 Delta R.T. -0.01 min
 Lab File: BM013918.D
 Acq: 28 Jan 2018 12:40

Tgt Ion	Resp	Lower	Upper
77	100		
123	37.1	31.0	46.6
65	16.3	12.2	18.2

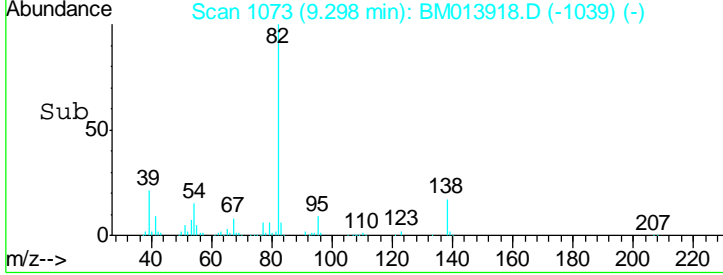
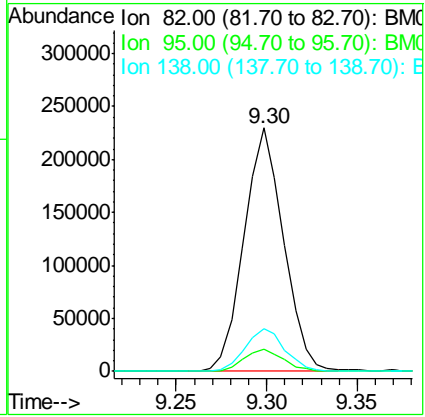
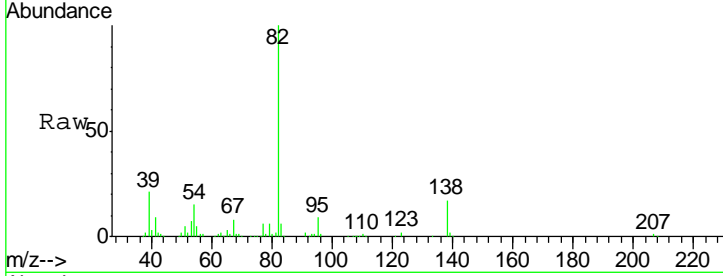




#21
 Isophorone
 Concen: 18.445 ng/ul
 RT: 9.30 min Scan# 1073
 Delta R.T. -0.00 min
 Lab File: BM013918.D
 Acq: 28 Jan 2018 12:40

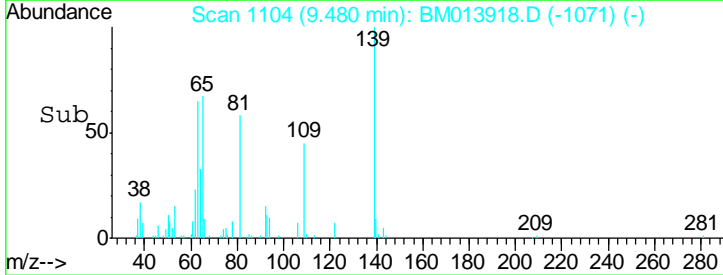
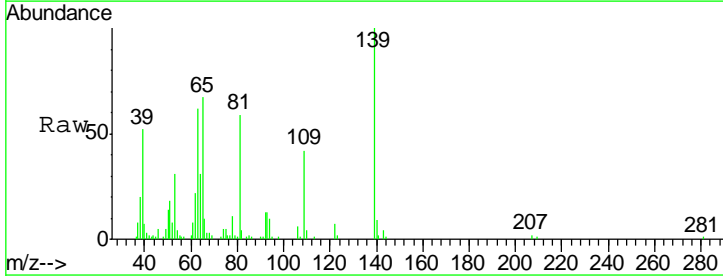
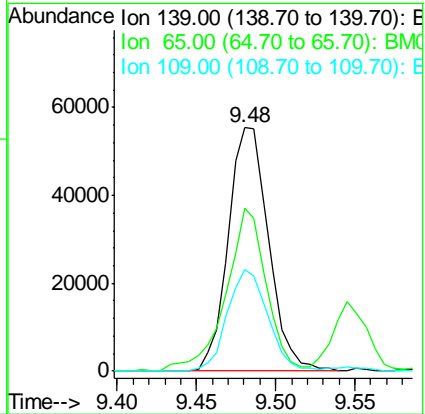
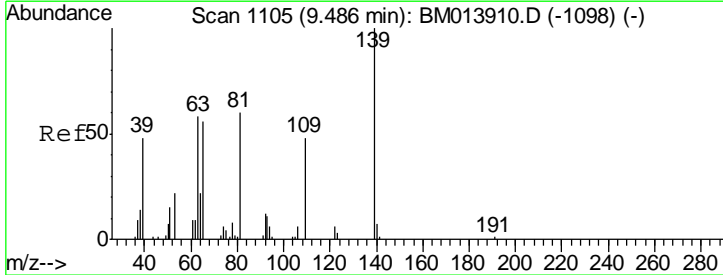
Instrument :
 BNA_M
 ClientSampled :

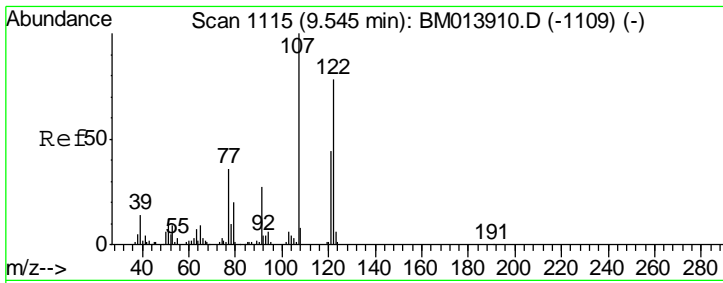
Tgt Ion	Resp	Lower	Upper
82	347997		
95	9.1	7.8	11.8
138	17.4	11.9	17.9



#23
 2-Nitrophenol
 Concen: 19.665 ng/ul
 RT: 9.48 min Scan# 1104
 Delta R.T. -0.01 min
 Lab File: BM013918.D
 Acq: 28 Jan 2018 12:40

Tgt Ion	Resp	Lower	Upper
139	97888		
65	66.7	55.4	83.0
109	41.9	42.2	63.2#

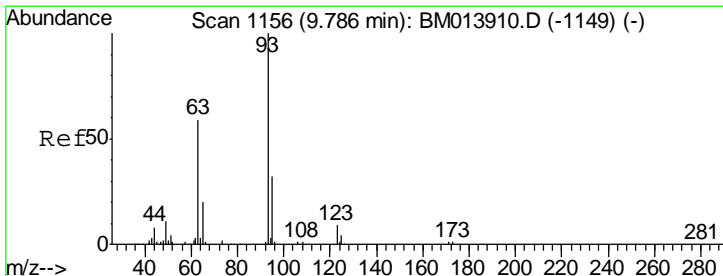
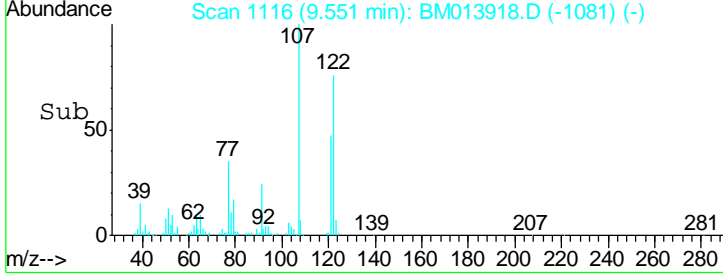
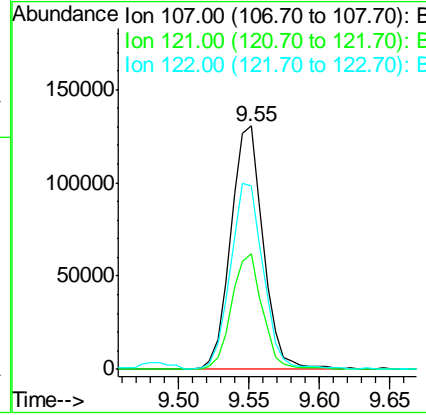
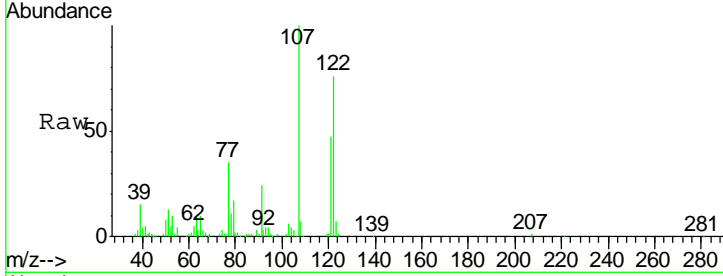




#24
 2,4-Dimethylphenol
 Concen: 19.899 ng/ul
 RT: 9.55 min Scan# 1116
 Delta R.T. 0.01 min
 Lab File: BM013918.D
 Acq: 28 Jan 2018 12:40

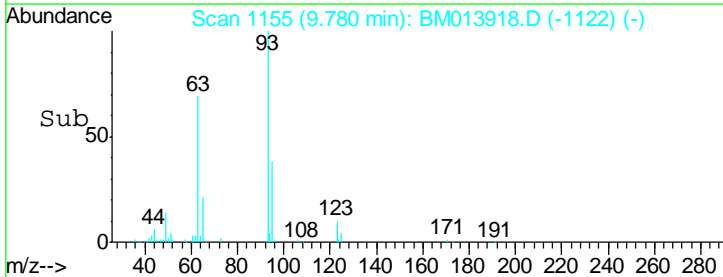
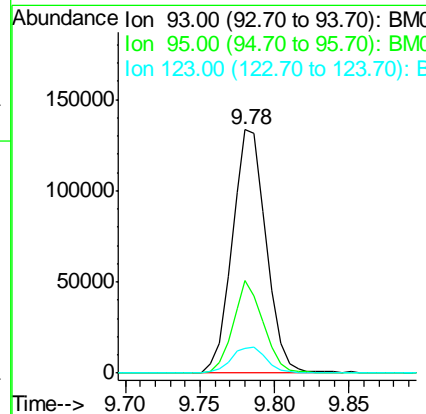
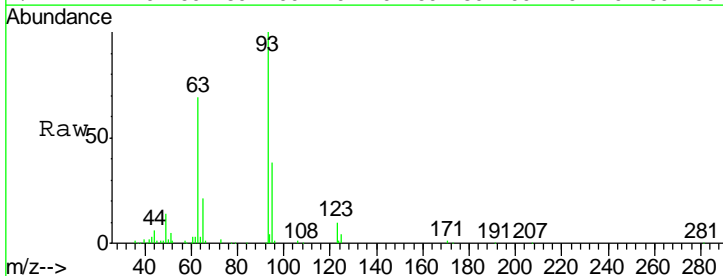
Instrument :
 BNA_M
 ClientSampled :

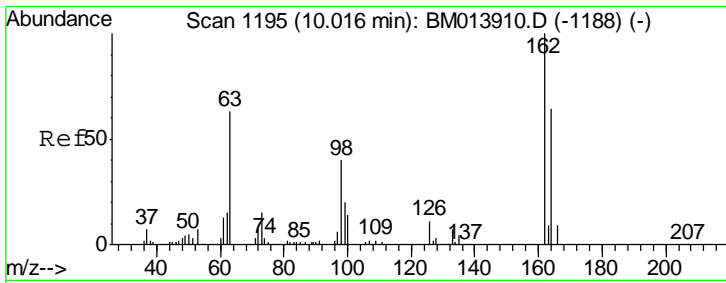
Tgt Ion	Resp	Lower	Upper
107	208828		
107	100		
121	47.3	31.9	47.9
122	75.6	57.8	86.6



#25
 Bis(2-Chloroethoxy)methane
 Concen: 18.429 ng/ul
 RT: 9.78 min Scan# 1155
 Delta R.T. -0.01 min
 Lab File: BM013918.D
 Acq: 28 Jan 2018 12:40

Tgt Ion	Resp	Lower	Upper
93	211962		
93	100		
95	37.8	28.5	42.7
123	10.2	8.9	13.3

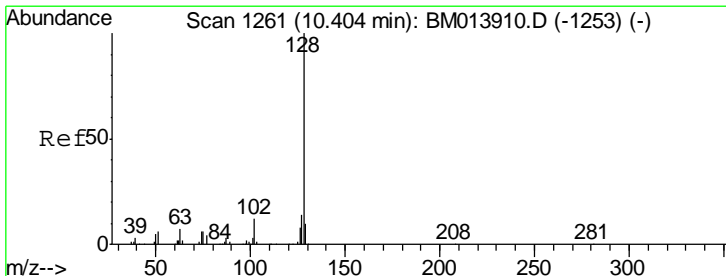
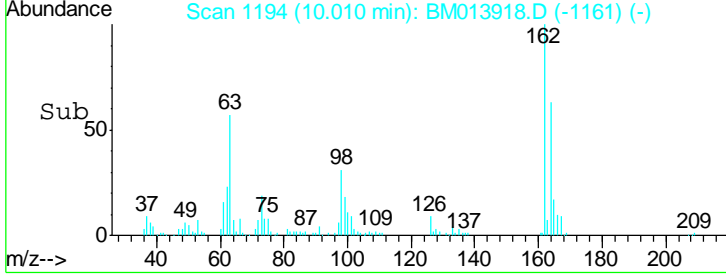
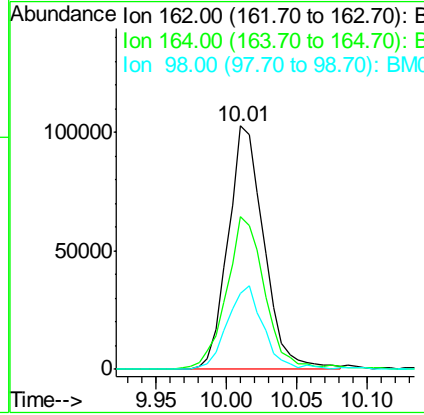
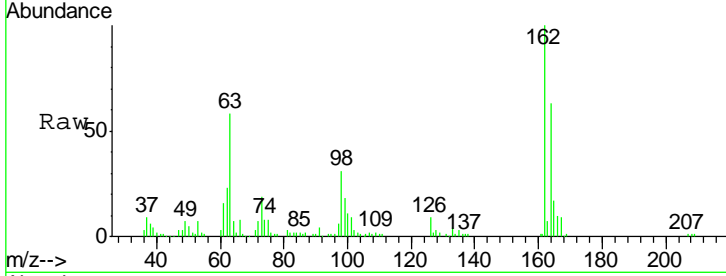




#27
 2,4-Dichlorophenol
 Concen: 20.572 ng/ul
 RT: 10.01 min Scan# 1194
 Delta R.T. -0.01 min
 Lab File: BM013918.D
 Acq: 28 Jan 2018 12:40

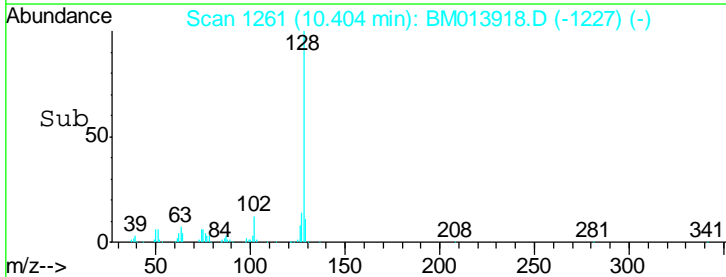
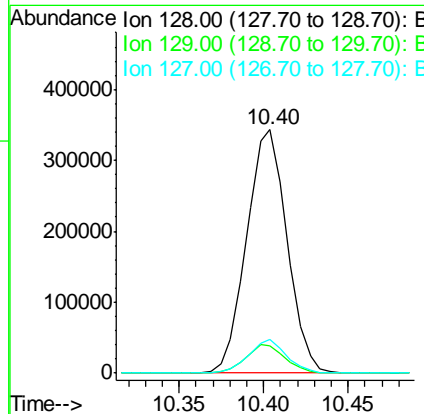
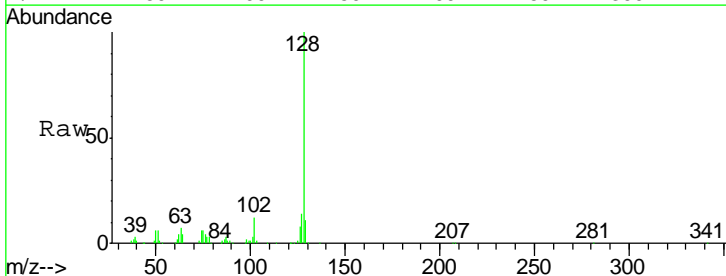
Instrument :
 BNA_M
 ClientSampled :

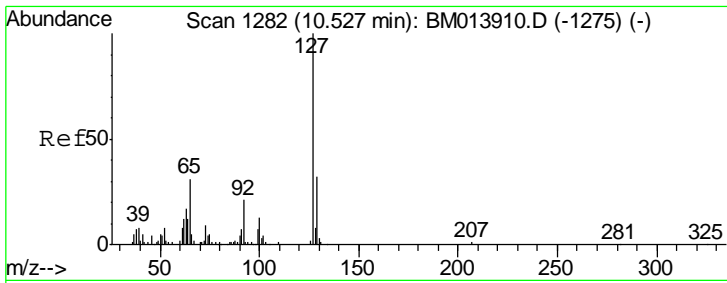
Tgt Ion	Resp	Lower	Upper
162	182931		
164	62.6	47.8	71.6
98	31.4	23.0	34.4



#28
 Naphthalene
 Concen: 19.735 ng/ul
 RT: 10.40 min Scan# 1261
 Delta R.T. -0.00 min
 Lab File: BM013918.D
 Acq: 28 Jan 2018 12:40

Tgt Ion	Resp	Lower	Upper
128	571938		
129	11.4	8.8	13.2
127	13.6	10.6	16.0

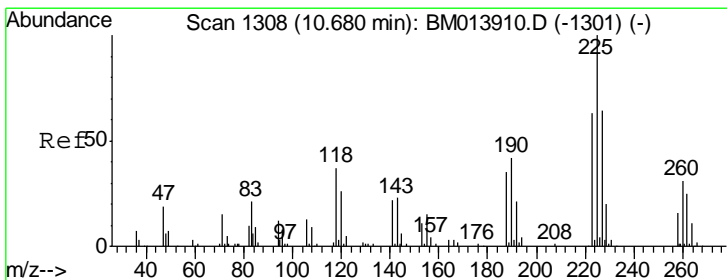
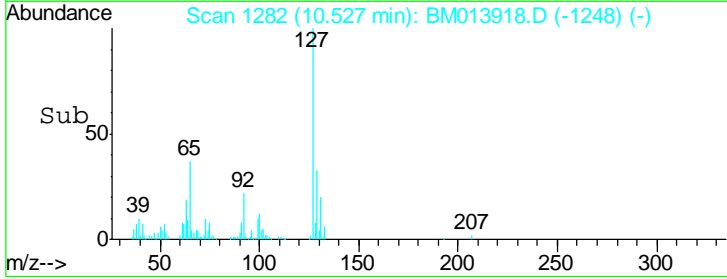
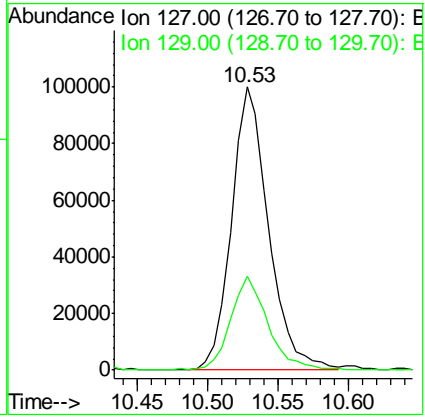
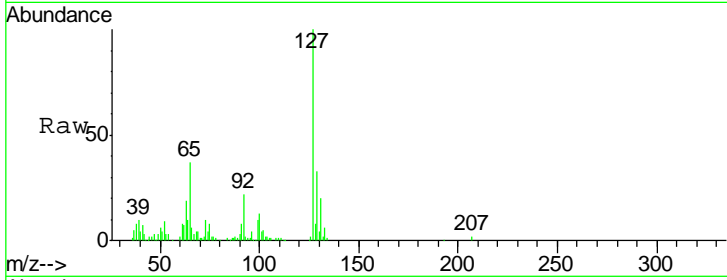




#30
 4-Chloroaniline
 Concen: 23.102 ng/ul
 RT: 10.53 min Scan# 1282
 Delta R.T. -0.00 min
 Lab File: BM013918.D
 Acq: 28 Jan 2018 12:40

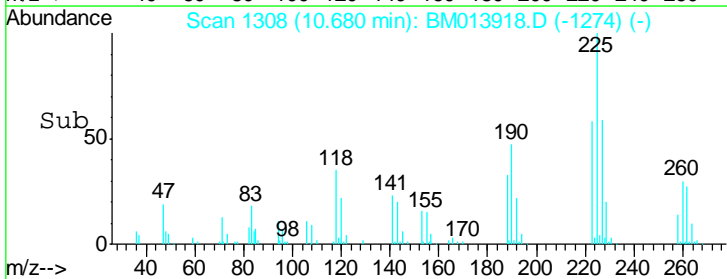
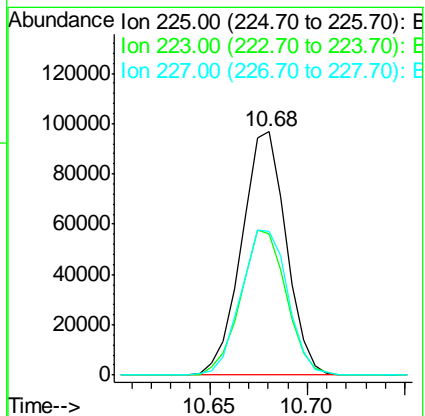
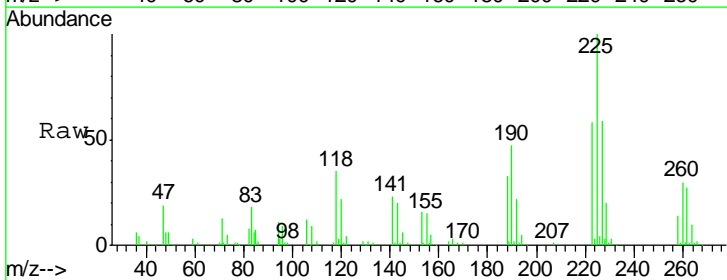
Instrument :
 BNA_M
 ClientSampled :

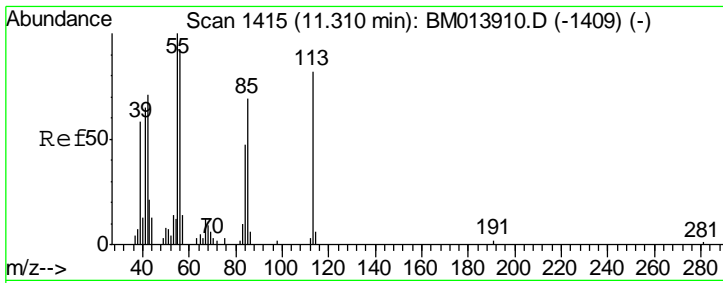
Tgt Ion	Resp	Lower	Upper
127	183385		
129	33.4	28.4	42.6



#31
 Hexachlorobutadiene
 Concen: 20.981 ng/ul
 RT: 10.68 min Scan# 1308
 Delta R.T. -0.00 min
 Lab File: BM013918.D
 Acq: 28 Jan 2018 12:40

Tgt Ion	Resp	Lower	Upper
225	153143		
223	58.1	49.4	74.2
227	59.3	45.4	68.2

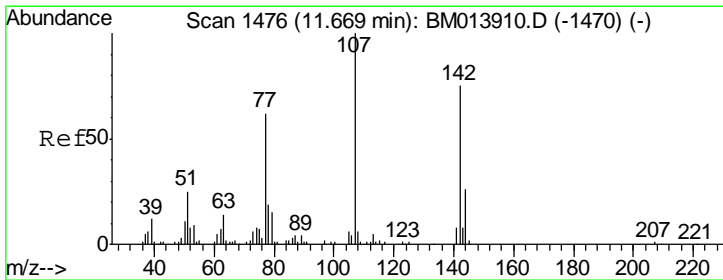
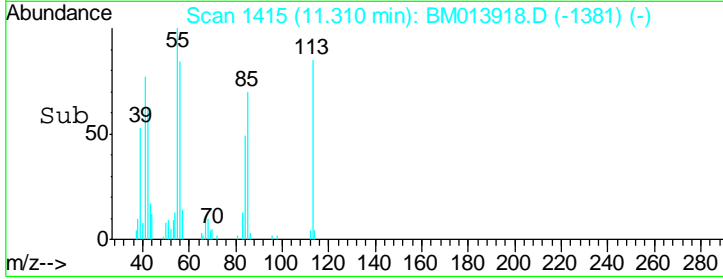
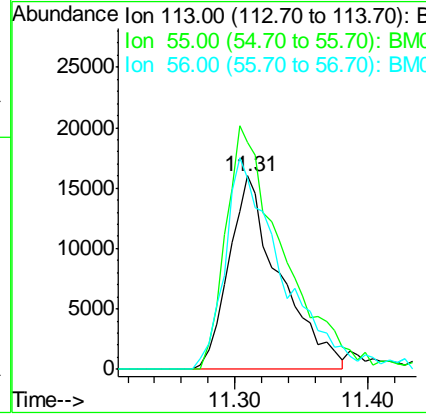
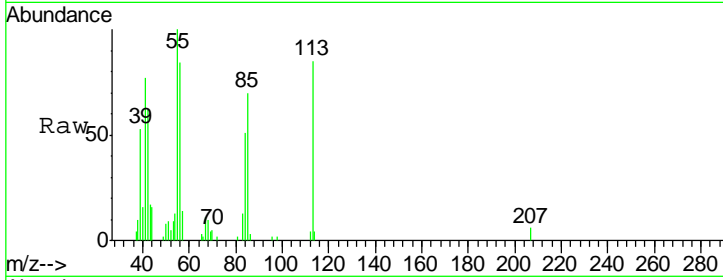




#32
 Caprolactam
 Concen: 17.190 ng/ul
 RT: 11.31 min Scan# 1415
 Delta R.T. -0.00 min
 Lab File: BM013918.D
 Acq: 28 Jan 2018 12:40

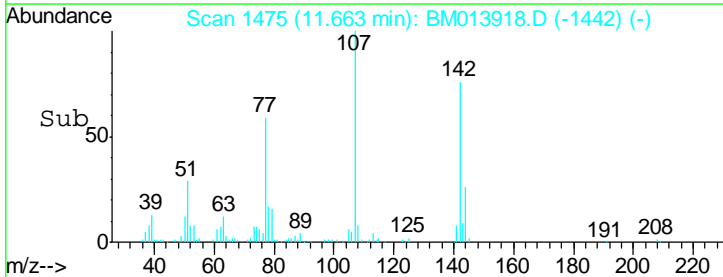
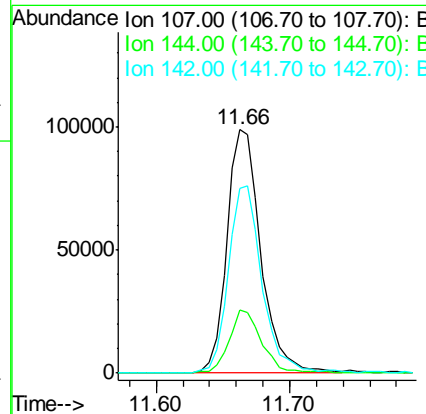
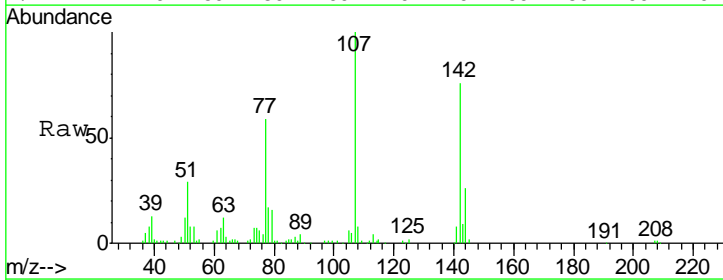
Instrument :
 BNA_M
 ClientSampled :

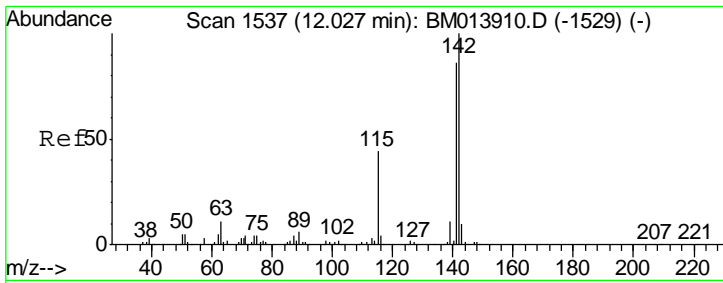
Tgt Ion	Resp	Lower	Upper
113	42523		
55	117.4	208.0	312.0#
56	98.4	160.0	240.0#



#33
 4-Chloro-3-methylphenol
 Concen: 19.540 ng/ul
 RT: 11.66 min Scan# 1475
 Delta R.T. -0.01 min
 Lab File: BM013918.D
 Acq: 28 Jan 2018 12:40

Tgt Ion	Resp	Lower	Upper
107	176145		
144	25.8	20.4	30.6
142	75.9	60.5	90.7

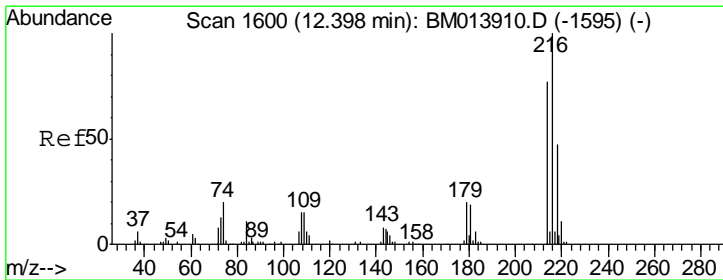
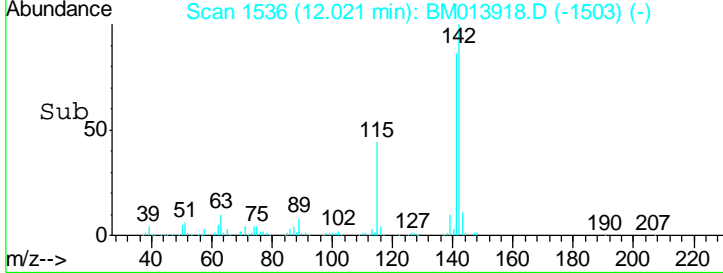
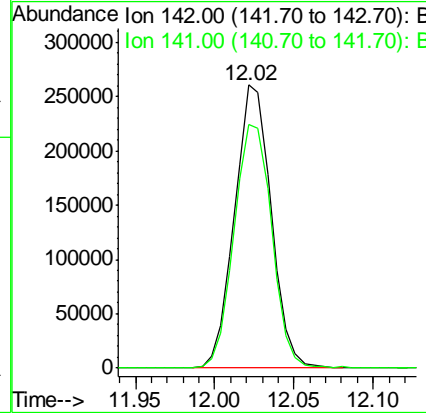
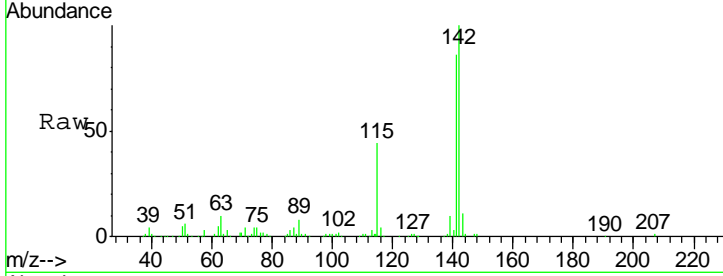




#34
 2-Methylnaphthalene
 Concen: 19.323 ng/ul
 RT: 12.02 min Scan# 1536
 Delta R.T. -0.01 min
 Lab File: BM013918.D
 Acq: 28 Jan 2018 12:40

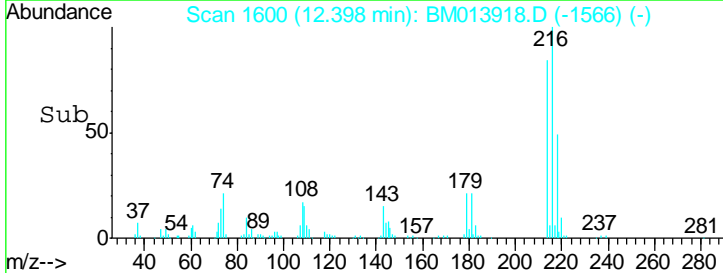
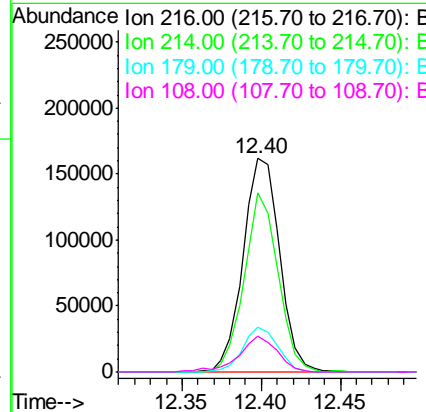
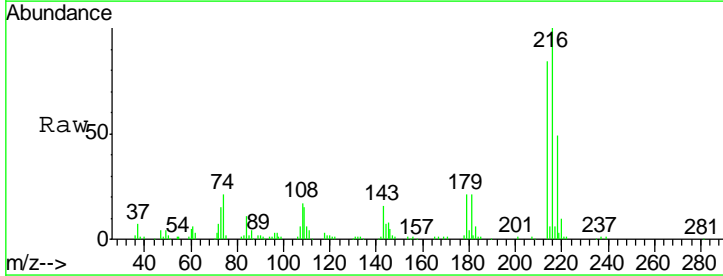
Instrument :
 BNA_M
 ClientSampled :

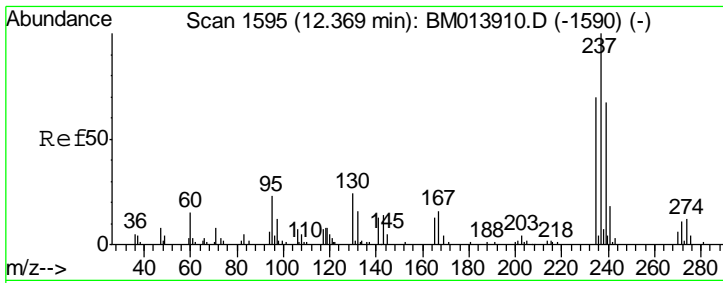
Tgt Ion	Resp	Lower	Upper
142	100		
141	85.9	74.1	111.1



#36
 1,2,4,5-Tetrachlorobenzene
 Concen: 20.366 ng/ul
 RT: 12.40 min Scan# 1600
 Delta R.T. -0.00 min
 Lab File: BM013918.D
 Acq: 28 Jan 2018 12:40

Tgt Ion	Resp	Lower	Upper
216	100		
214	84.0	60.6	90.8
179	20.8	17.5	26.3
108	17.0	11.3	16.9#

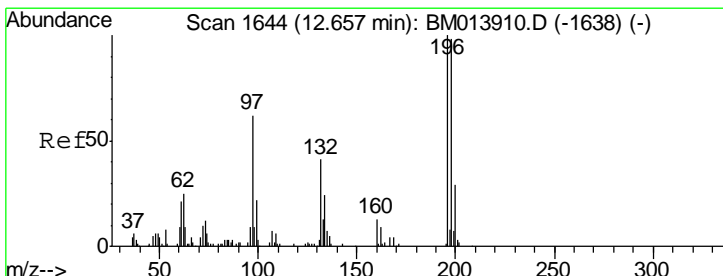
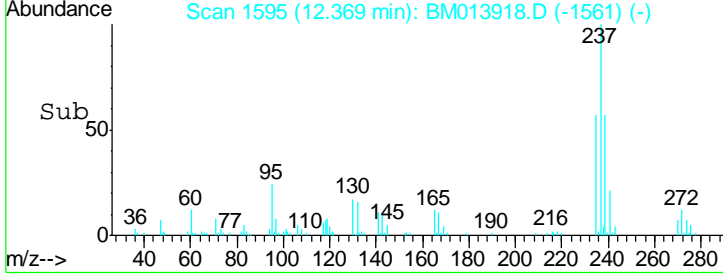
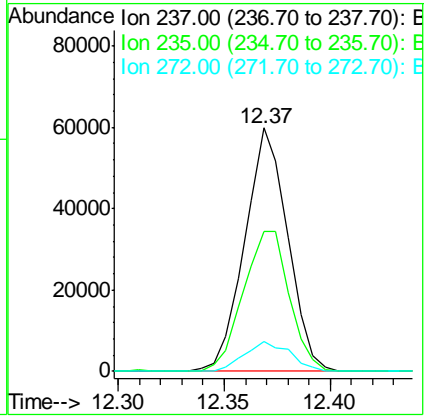
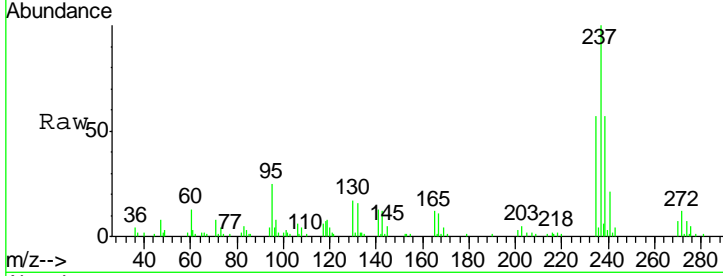




#37
 Hexachlorocyclopentadiene
 Concen: 15.982 ng/ul
 RT: 12.37 min Scan# 1595
 Delta R.T. -0.00 min
 Lab File: BM013918.D
 Acq: 28 Jan 2018 12:40

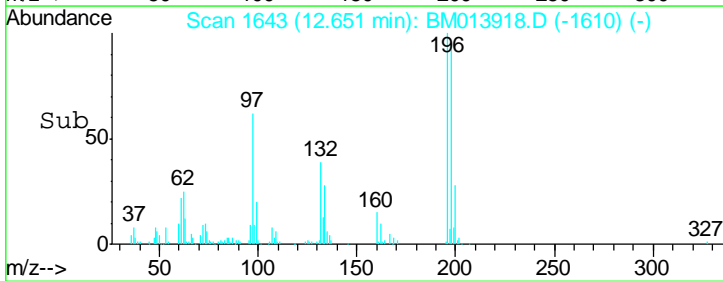
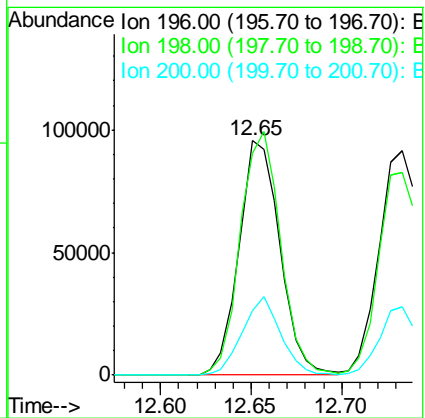
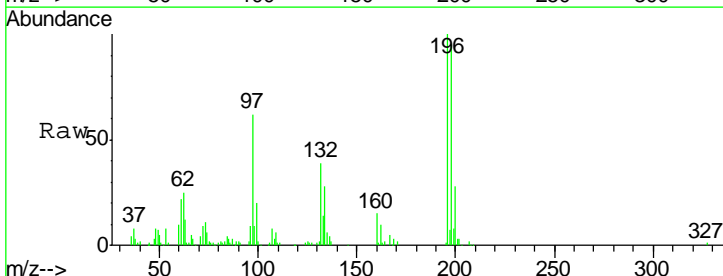
Instrument :
 BNA_M
 ClientSampled :

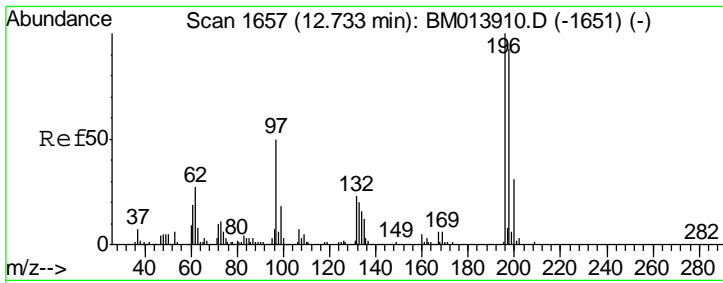
Tgt Ion	Resp	Lower	Upper
237	100		
235	57.4	50.2	75.4
272	13.2	11.0	16.6



#38
 2,4,6-Trichlorophenol
 Concen: 20.449 ng/ul
 RT: 12.65 min Scan# 1643
 Delta R.T. -0.01 min
 Lab File: BM013918.D
 Acq: 28 Jan 2018 12:40

Tgt Ion	Resp	Lower	Upper
196	100		
198	94.6	74.1	111.1
200	27.6	25.2	37.8

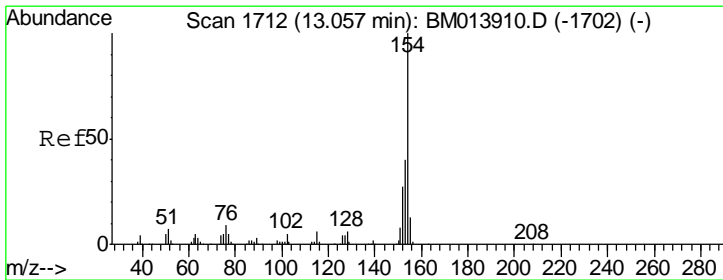
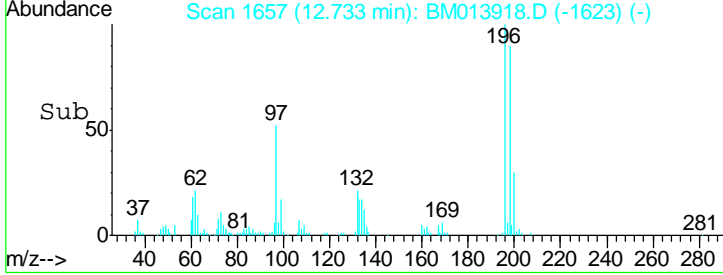
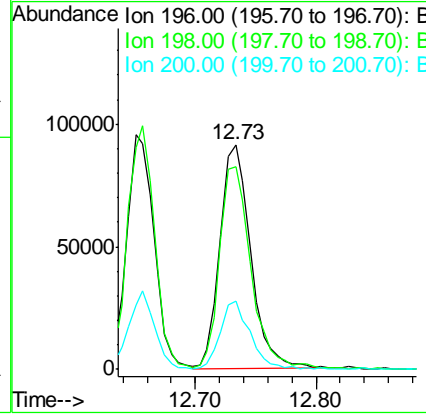
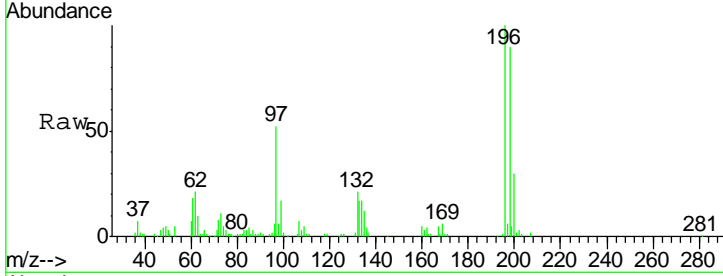




#39
 2,4,5-Trichlorophenol
 Concen: 21.091 ng/ul
 RT: 12.73 min Scan# 1657
 Delta R.T. -0.00 min
 Lab File: BM013918.D
 Acq: 28 Jan 2018 12:40

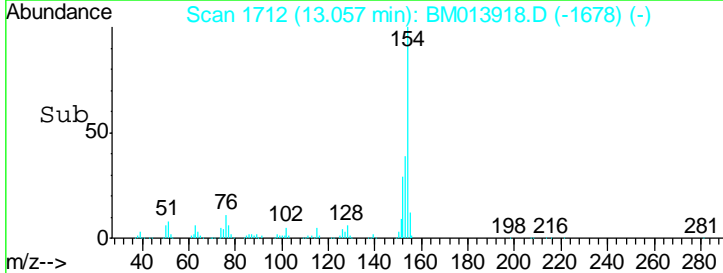
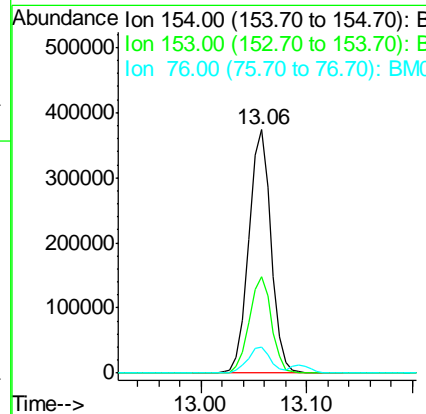
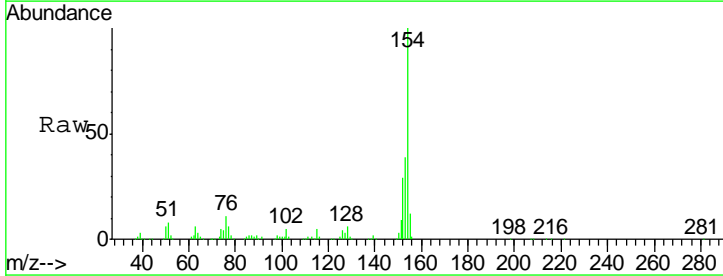
Instrument :
 BNA_M
 ClientSampled :

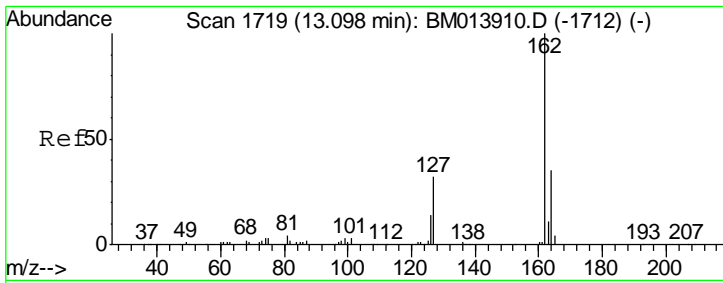
Tgt Ion	Resp	Lower	Upper
196	161731		
198	89.9	75.6	113.4
200	30.1	25.5	38.3



#40
 1,1'-Biphenyl
 Concen: 19.065 ng/ul
 RT: 13.06 min Scan# 1712
 Delta R.T. -0.00 min
 Lab File: BM013918.D
 Acq: 28 Jan 2018 12:40

Tgt Ion	Resp	Lower	Upper
154	545288		
153	39.4	32.6	48.8
76	10.7	8.5	12.7

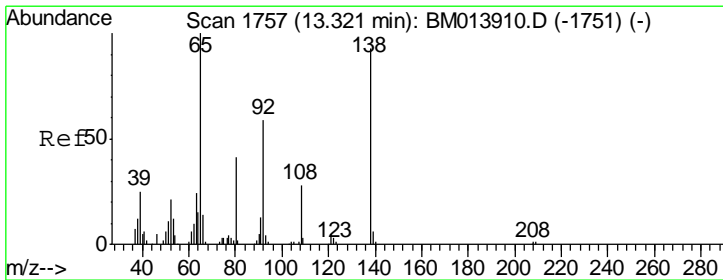
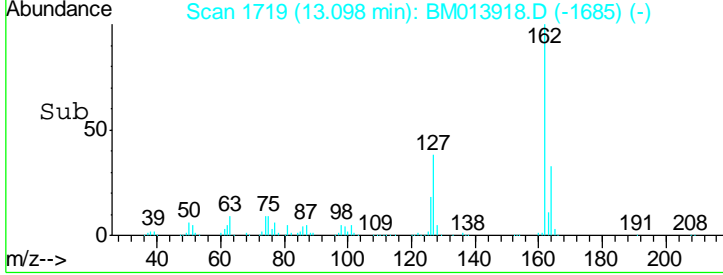
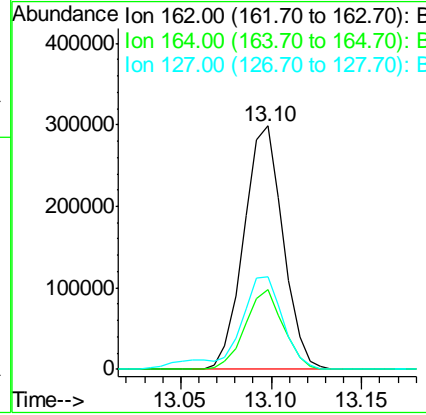
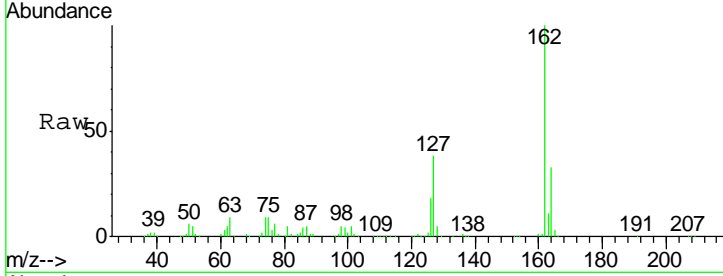




#41
 2-Chloronaphthalene
 Concen: 20.009 ng/ul
 RT: 13.10 min Scan# 1719
 Delta R.T. -0.00 min
 Lab File: BM013918.D
 Acq: 28 Jan 2018 12:40

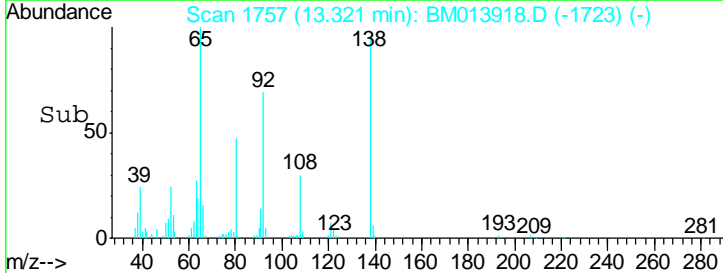
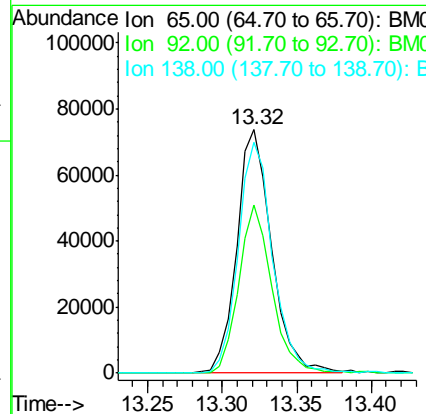
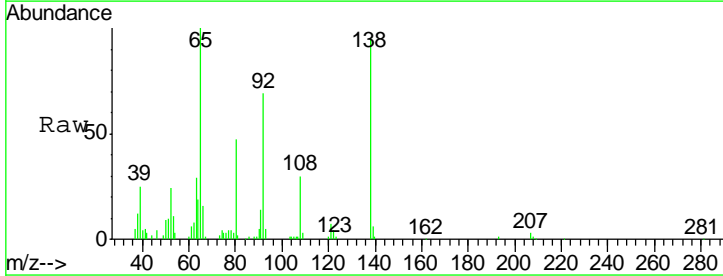
Instrument :
 BNA_M
 ClientSampled :

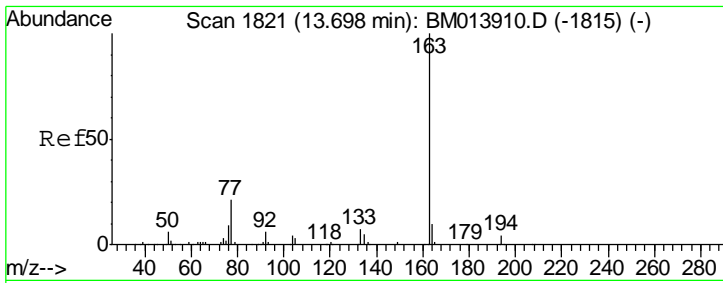
Tgt Ion	Resp	Lower	Upper
162	100		
164	32.7	25.9	38.9
127	38.1	29.4	44.2



#42
 2-Nitroaniline
 Concen: 19.428 ng/ul
 RT: 13.32 min Scan# 1757
 Delta R.T. -0.00 min
 Lab File: BM013918.D
 Acq: 28 Jan 2018 12:40

Tgt Ion	Resp	Lower	Upper
65	100		
92	68.9	51.8	77.6
138	94.7	74.2	111.4

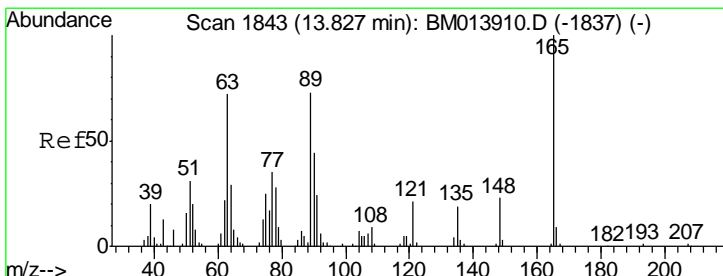
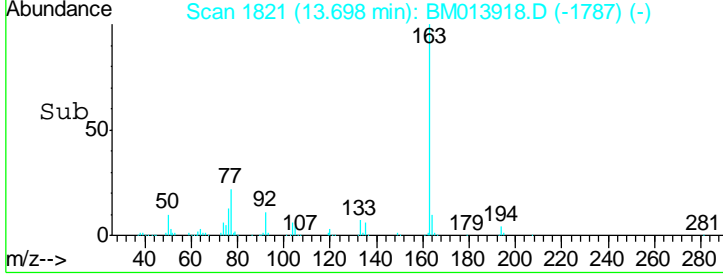
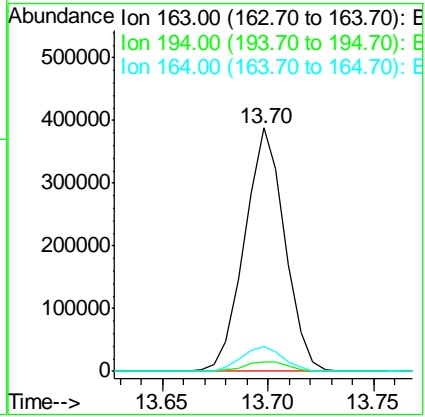
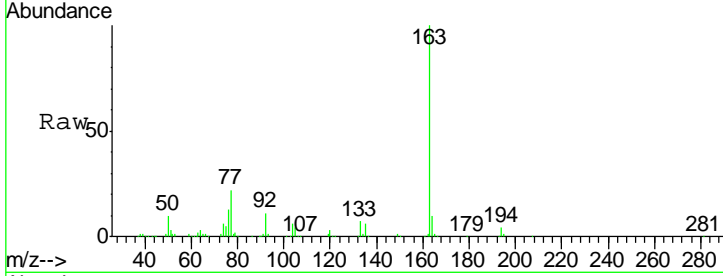




#44
 Dimethylphthalate
 Concen: 18.413 ng/ul
 RT: 13.70 min Scan# 1821
 Delta R.T. -0.00 min
 Lab File: BM013918.D
 Acq: 28 Jan 2018 12:40

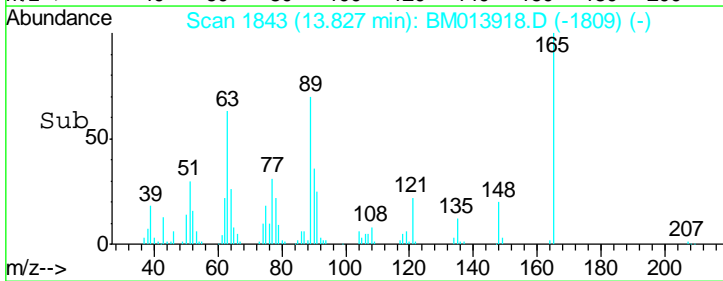
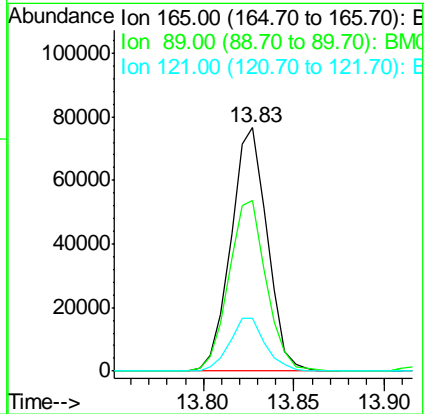
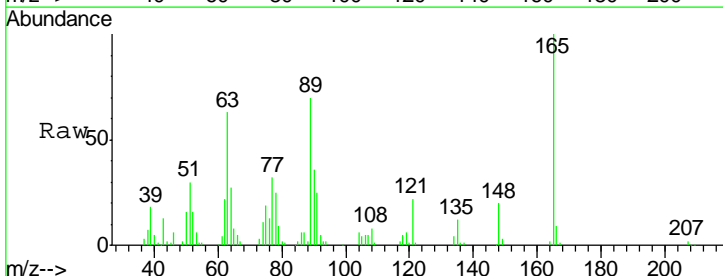
Instrument :
 BNA_M
 ClientSampled :

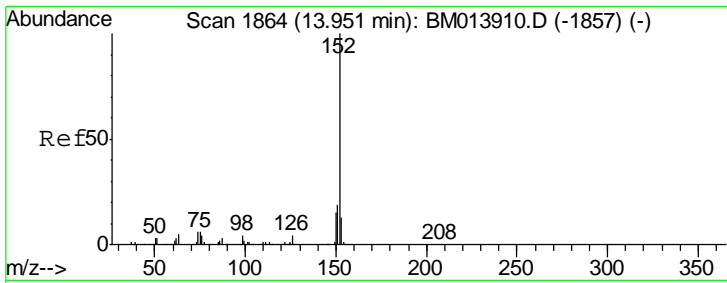
Tgt Ion	Resp	Lower	Upper
163	512688		
194	4.0	3.5	5.3
164	9.9	8.2	12.4



#45
 2,6-Dinitrotoluene
 Concen: 19.722 ng/ul
 RT: 13.83 min Scan# 1843
 Delta R.T. -0.00 min
 Lab File: BM013918.D
 Acq: 28 Jan 2018 12:40

Tgt Ion	Resp	Lower	Upper
165	106413		
89	70.3	52.6	79.0
121	21.6	14.6	22.0

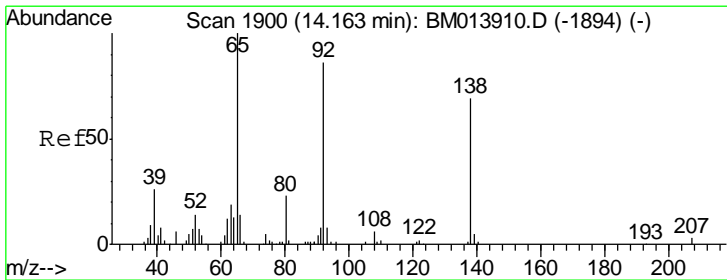
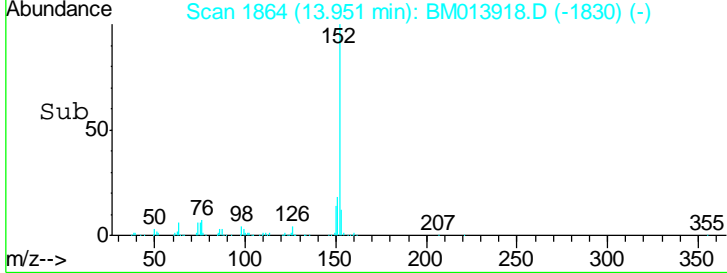
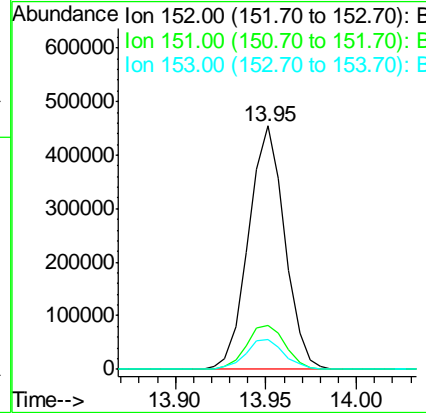
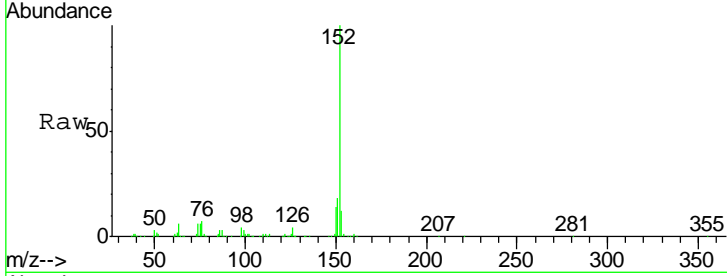




#47
 Acenaphthylene
 Concen: 19.086 ng/ul
 RT: 13.95 min Scan# 1864
 Delta R.T. -0.00 min
 Lab File: BM013918.D
 Acq: 28 Jan 2018 12:40

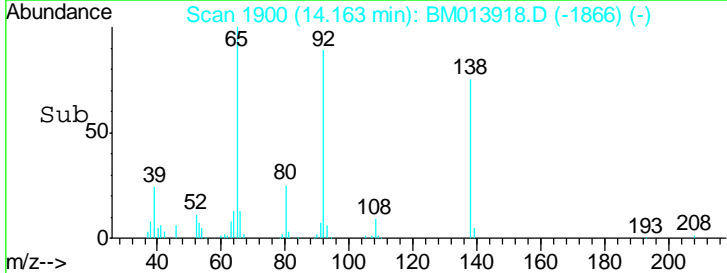
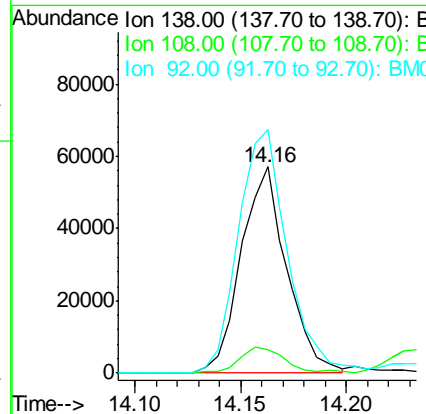
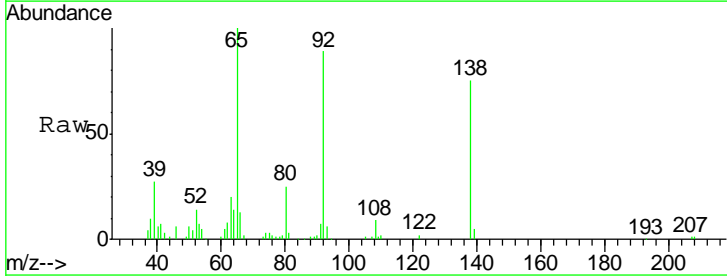
Instrument :
 BNA_M
 ClientSampled :

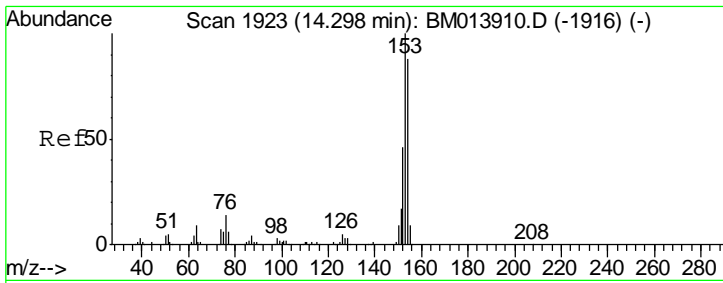
Tgt Ion	Resp	Lower	Upper
152	630640		
151	18.1	16.3	24.5
153	12.5	10.2	15.4



#48
 3-Nitroaniline
 Concen: 20.160 ng/ul
 RT: 14.16 min Scan# 1900
 Delta R.T. -0.00 min
 Lab File: BM013918.D
 Acq: 28 Jan 2018 12:40

Tgt Ion	Resp	Lower	Upper
138	85547		
108	11.5	9.9	14.9
92	118.3	105.0	157.4

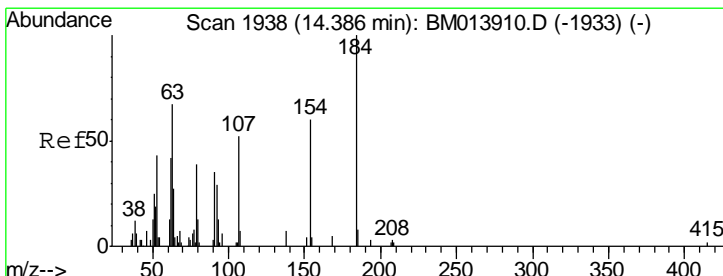
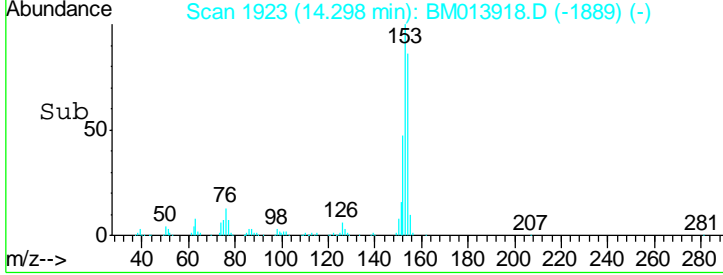
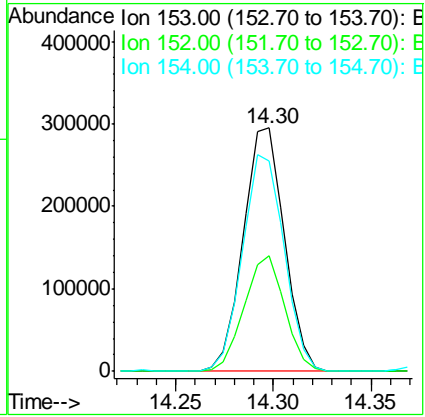
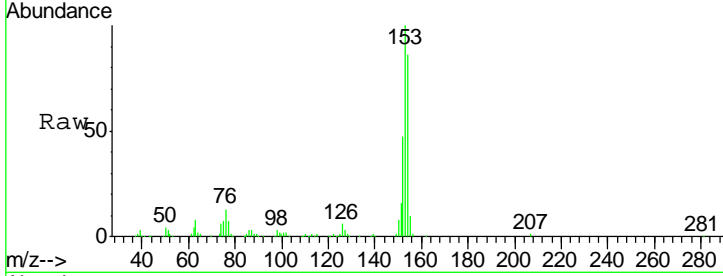




#49
 Acenaphthene
 Concen: 18.848 ng/ul
 RT: 14.30 min Scan# 1923
 Delta R.T. -0.00 min
 Lab File: BM013918.D
 Acq: 28 Jan 2018 12:40

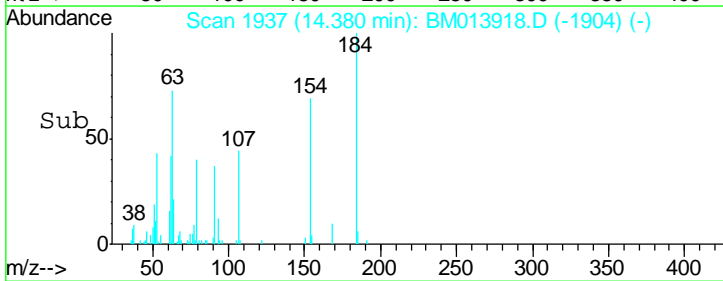
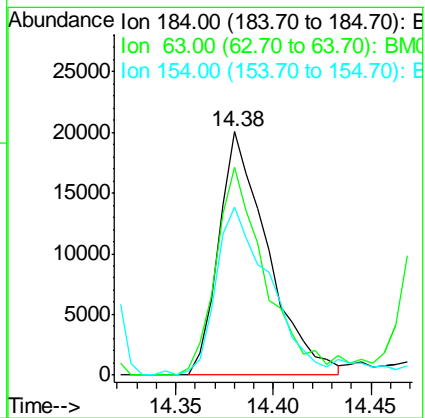
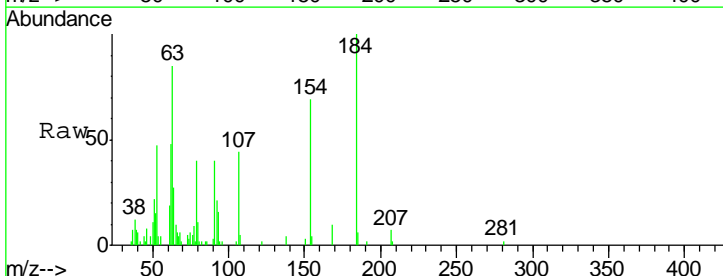
Instrument :
 BNA_M
 ClientSampled :

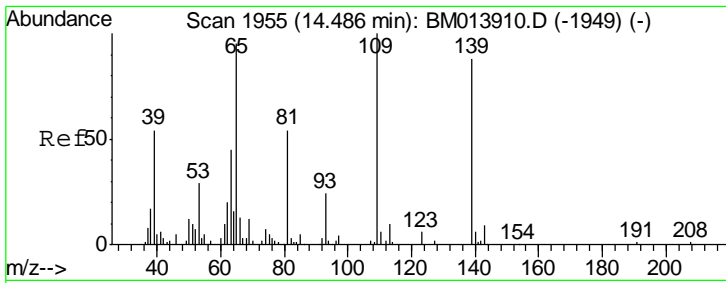
Tgt Ion	Resp	Lower	Upper
153	431317		
152	47.5	37.6	56.4
154	86.4	70.4	105.6



#50
 2,4-Dinitrophenol
 Concen: 11.318 ng/ul
 RT: 14.38 min Scan# 1937
 Delta R.T. -0.01 min
 Lab File: BM013918.D
 Acq: 28 Jan 2018 12:40

Tgt Ion	Resp	Lower	Upper
184	35007		
63	85.1	50.1	75.1#
154	68.9	54.5	81.7

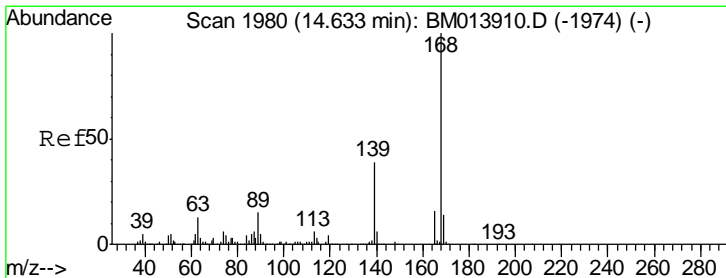
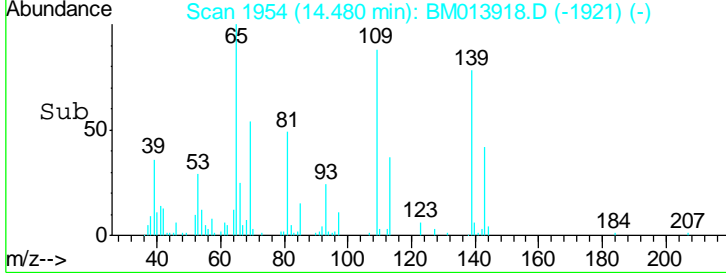
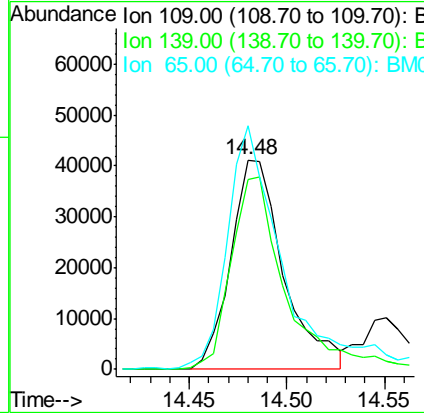
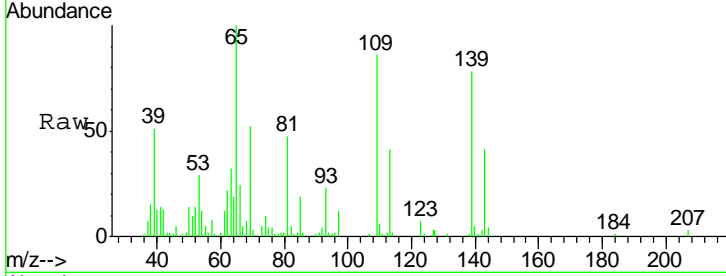




#52
 4-Nitrophenol
 Concen: 16.586 ng/ul
 RT: 14.48 min Scan# 1954
 Delta R.T. -0.01 min
 Lab File: BM013918.D
 Acq: 28 Jan 2018 12:40

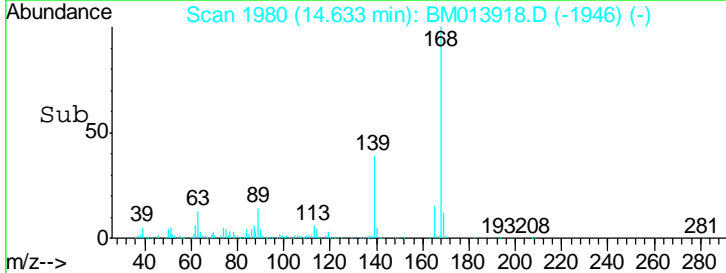
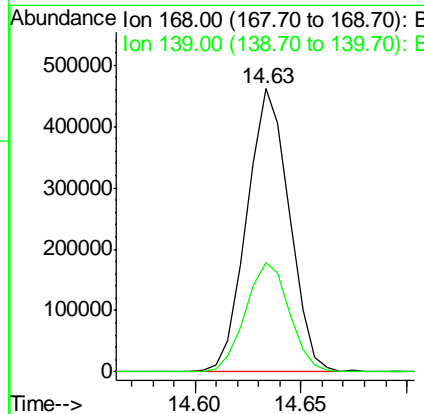
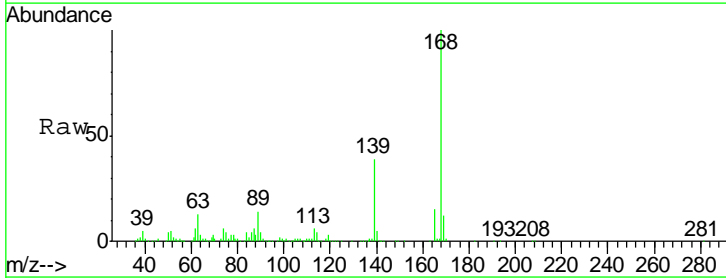
Instrument :
 BNA_M
 ClientSampled :

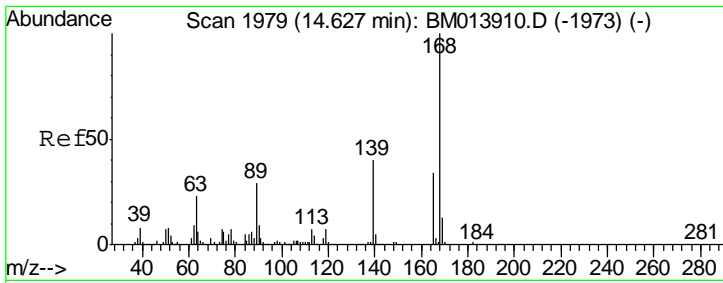
Tgt Ion	Resp	Lower	Upper
109	100		
139	91.0	80.0	120.0
65	116.3	120.0	180.0#



#53
 Dibenzofuran
 Concen: 18.778 ng/ul
 RT: 14.63 min Scan# 1980
 Delta R.T. -0.00 min
 Lab File: BM013918.D
 Acq: 28 Jan 2018 12:40

Tgt Ion	Resp	Lower	Upper
168	100		
139	38.7	30.8	46.2

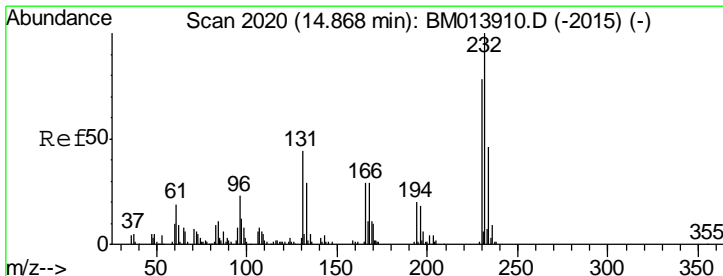
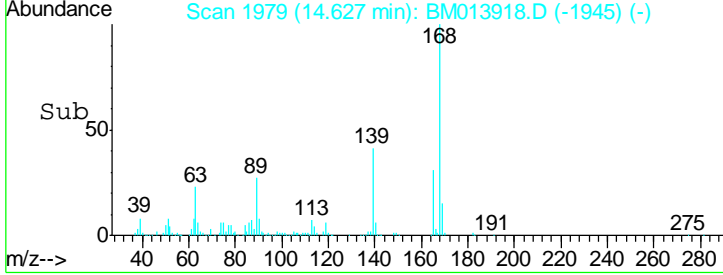
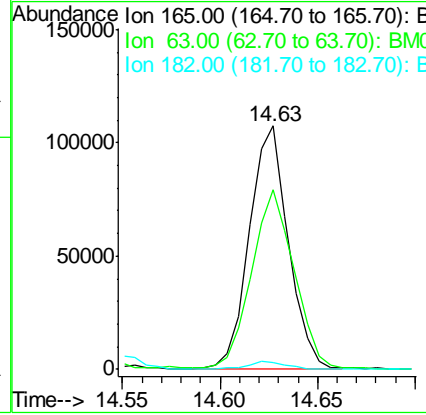
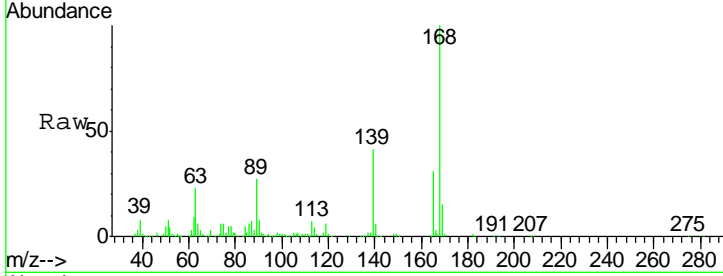




#54
 2,4-Dinitrotoluene
 Concen: 18.879 ng/ul
 RT: 14.63 min Scan# 1979
 Delta R.T. -0.00 min
 Lab File: BM013918.D
 Acq: 28 Jan 2018 12:40

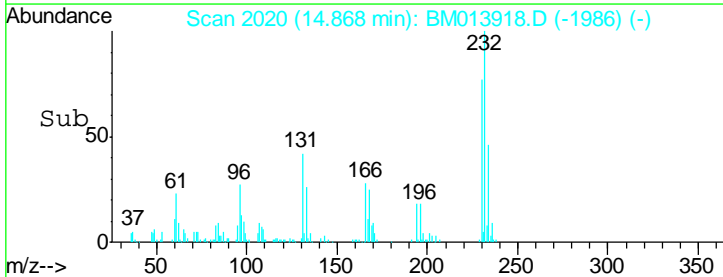
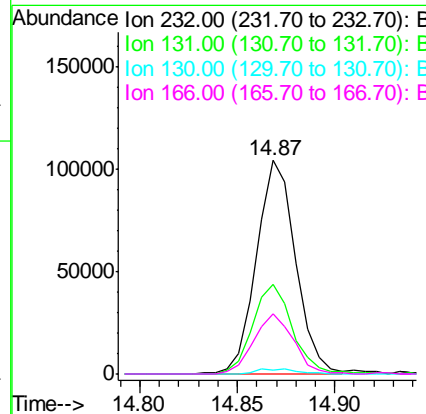
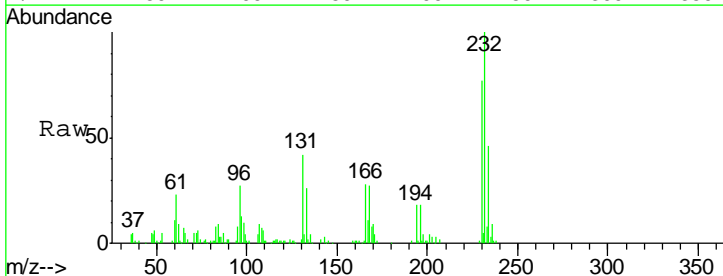
Instrument :
 BNA_M
 ClientSampled :

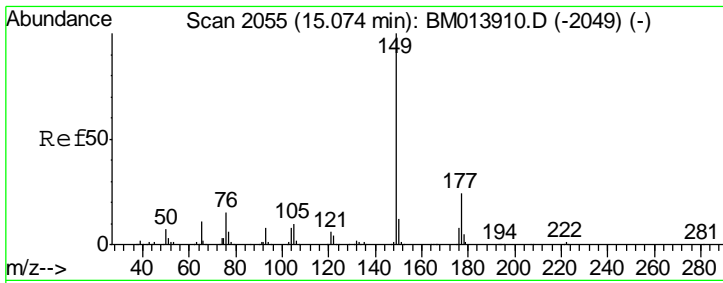
Tgt Ion	Resp	Lower	Upper
165	100		
63	74.0	45.8	68.8#
182	2.9	2.6	4.0



#55
 2,3,4,6-Tetrachlorophenol
 Concen: 20.123 ng/ul
 RT: 14.87 min Scan# 2020
 Delta R.T. -0.00 min
 Lab File: BM013918.D
 Acq: 28 Jan 2018 12:40

Tgt Ion	Resp	Lower	Upper
232	100		
131	42.2	29.0	43.4
130	2.1	2.0	3.0
166	28.0	21.4	32.2

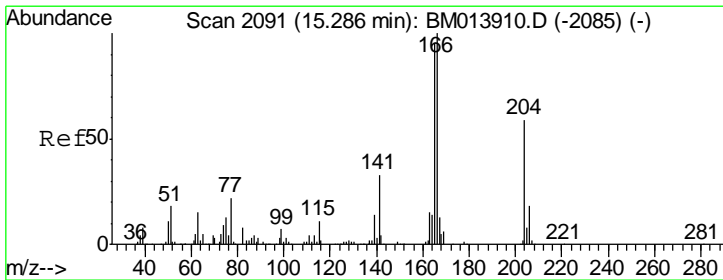
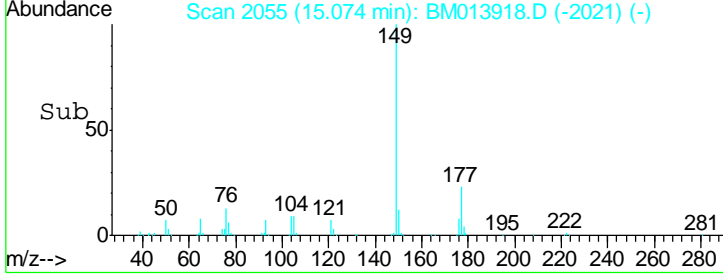
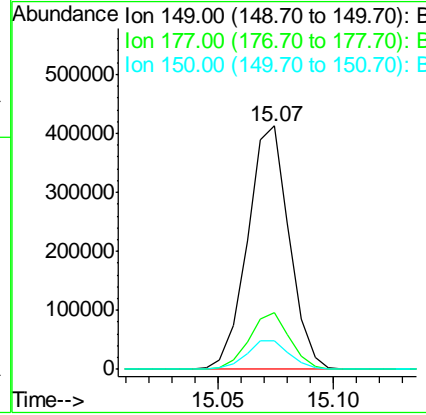
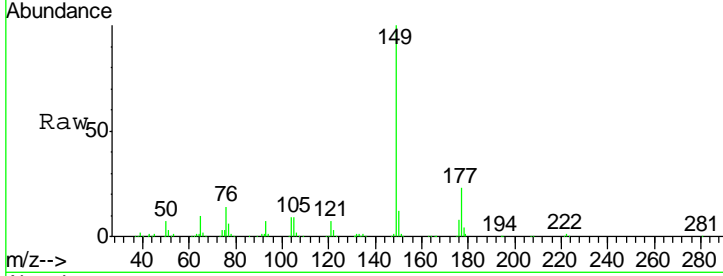




#56
 Diethylphthalate
 Concen: 18.507 ng/ul
 RT: 15.07 min Scan# 2055
 Delta R.T. -0.00 min
 Lab File: BM013918.D
 Acq: 28 Jan 2018 12:40

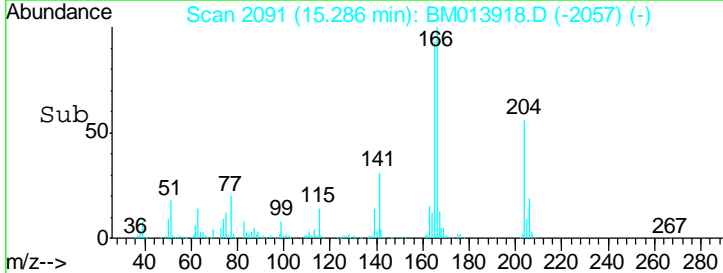
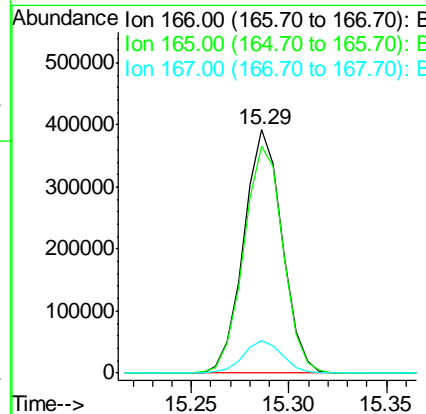
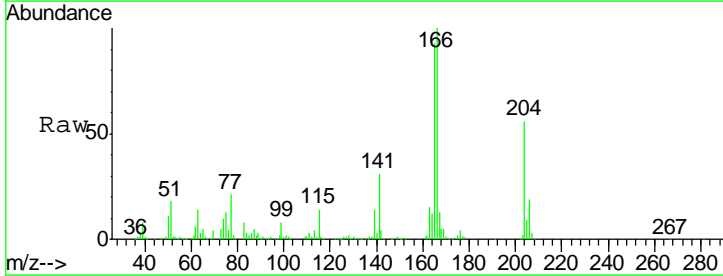
Instrument :
 BNA_M
 ClientSampled :

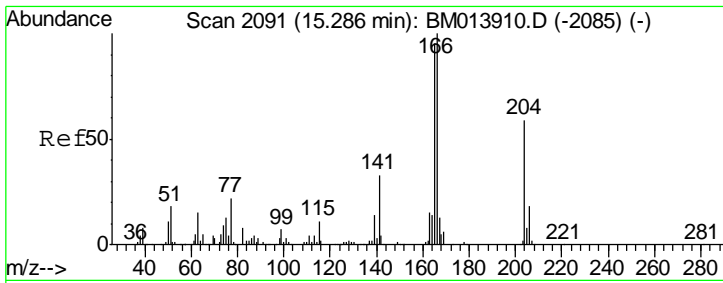
Tgt Ion	Resp	Lower	Upper
149	518592		
177	23.4	20.5	30.7
150	11.7	10.6	15.8



#58
 Fluorene
 Concen: 18.943 ng/ul
 RT: 15.29 min Scan# 2091
 Delta R.T. -0.00 min
 Lab File: BM013918.D
 Acq: 28 Jan 2018 12:40

Tgt Ion	Resp	Lower	Upper
166	534180		
165	93.5	77.9	116.9
167	13.5	10.6	16.0

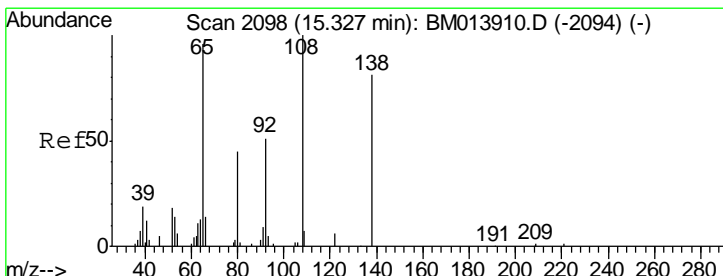
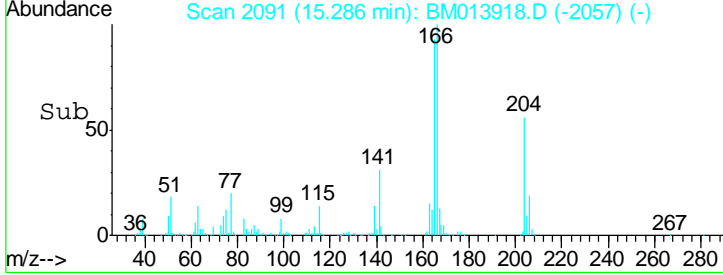
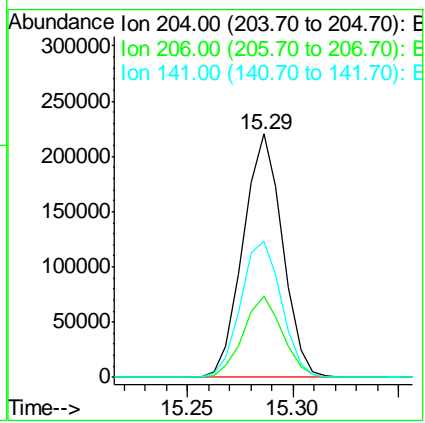
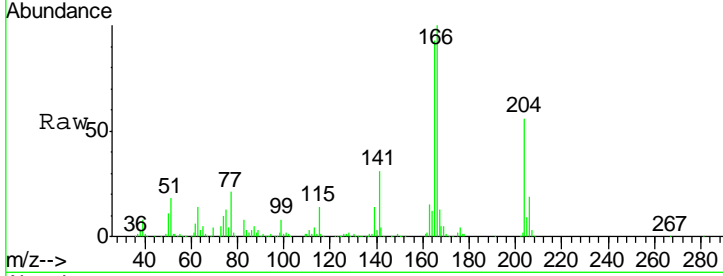




#59
 4-Chlorophenyl-phenylether
 Concen: 18.751 ng/ul
 RT: 15.29 min Scan# 2091
 Delta R.T. -0.00 min
 Lab File: BM013918.D
 Acq: 28 Jan 2018 12:40

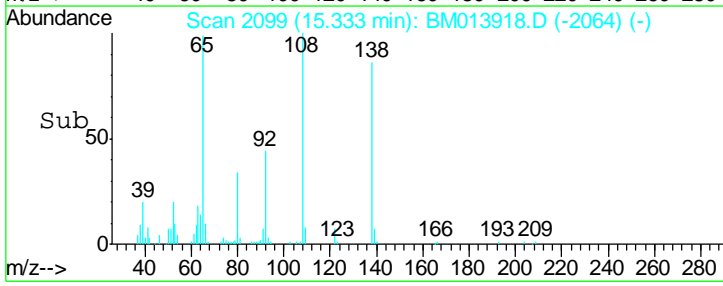
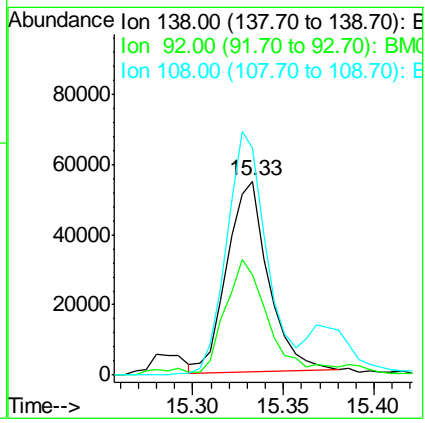
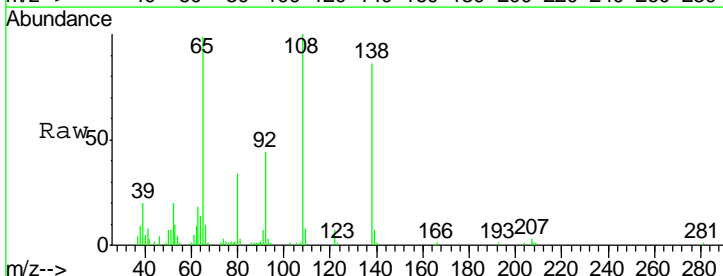
Instrument :
 BNA_M
 ClientSampled :

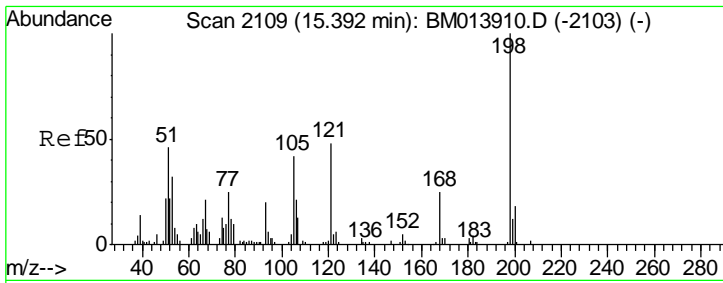
Tgt Ion	Resp	Lower	Upper
204	285711		
204	100		
206	33.4	24.8	37.2
141	56.1	44.3	66.5



#60
 4-Nitroaniline
 Concen: 17.274 ng/ul
 RT: 15.33 min Scan# 2099
 Delta R.T. 0.01 min
 Lab File: BM013918.D
 Acq: 28 Jan 2018 12:40

Tgt Ion	Resp	Lower	Upper
138	85765		
138	100		
92	51.6	40.0	60.0
108	116.9	80.0	120.0

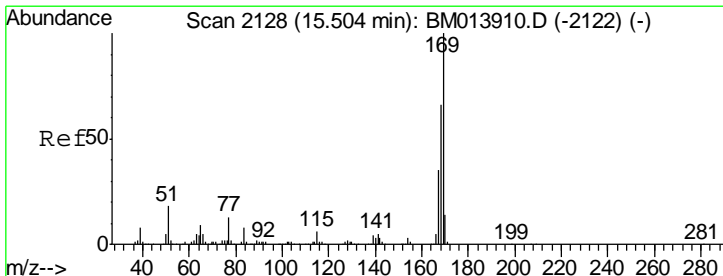
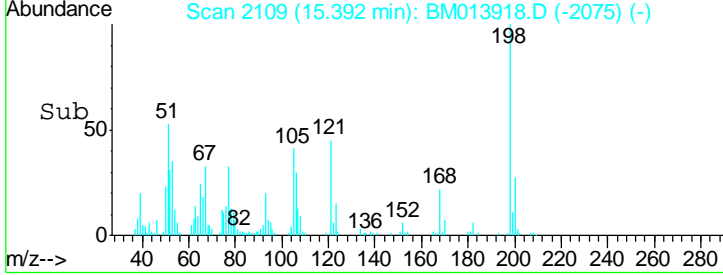
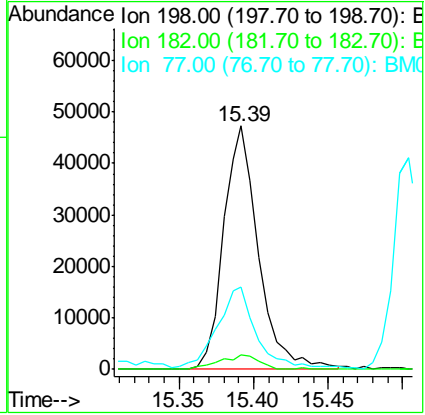
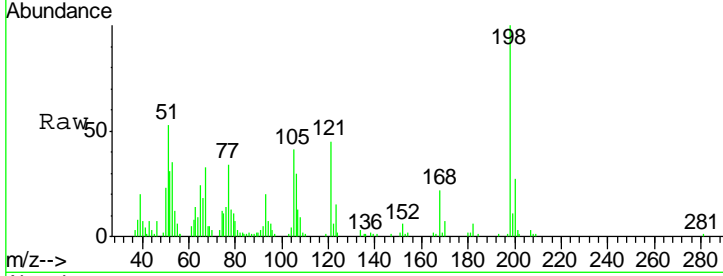




#63
 4,6-Dinitro-2-methylphenol
 Concen: 15.756 ng/ul
 RT: 15.39 min Scan# 2109
 Delta R.T. -0.00 min
 Lab File: BM013918.D
 Acq: 28 Jan 2018 12:40

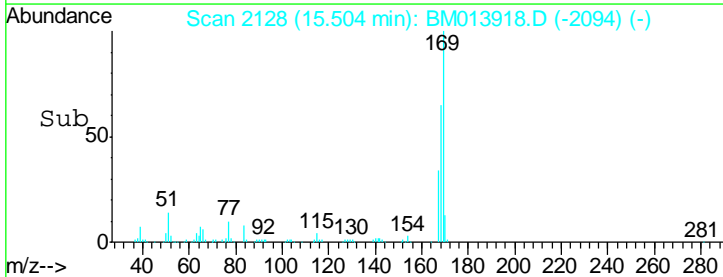
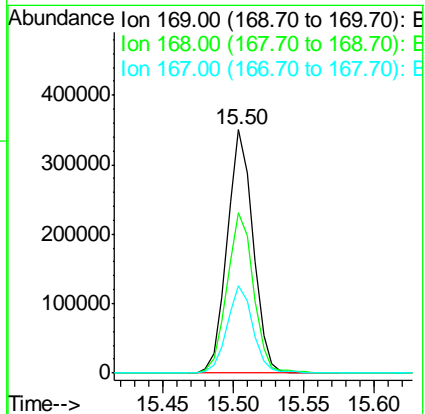
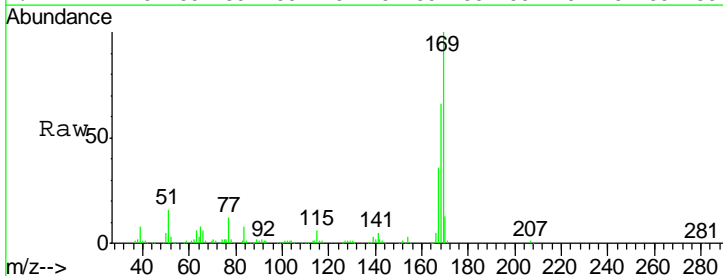
Instrument :
 BNA_M
 ClientSampled :

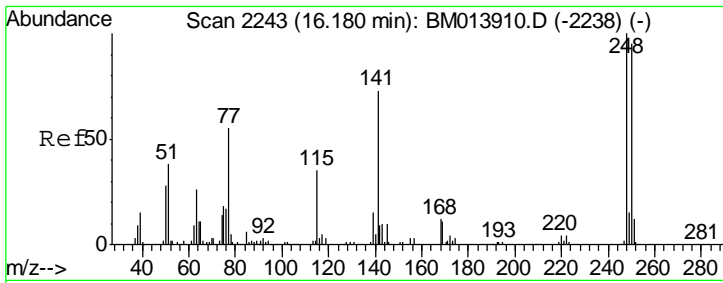
Tgt Ion	Resp	Lower	Upper
198	77129		
182	5.8	3.8	5.6#
77	33.8	25.2	37.8



#64
 N-Nitrosodiphenylamine
 Concen: 19.741 ng/ul
 RT: 15.50 min Scan# 2128
 Delta R.T. -0.00 min
 Lab File: BM013918.D
 Acq: 28 Jan 2018 12:40

Tgt Ion	Resp	Lower	Upper
169	447365		
168	65.9	54.0	81.0
167	36.1	29.1	43.7

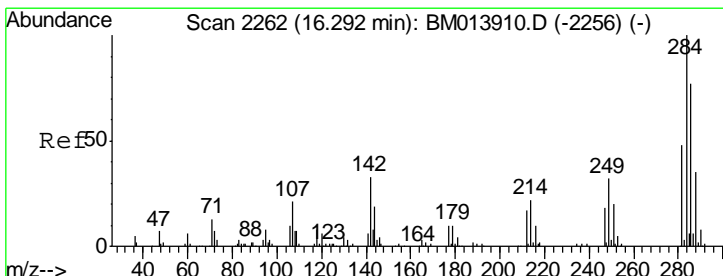
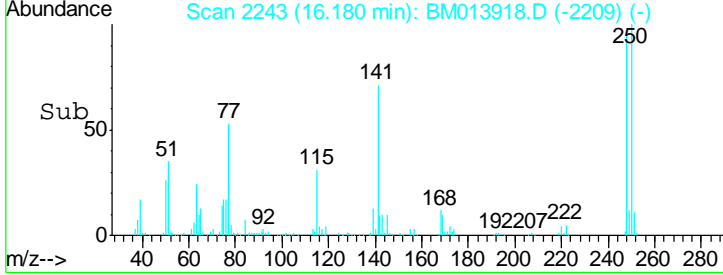
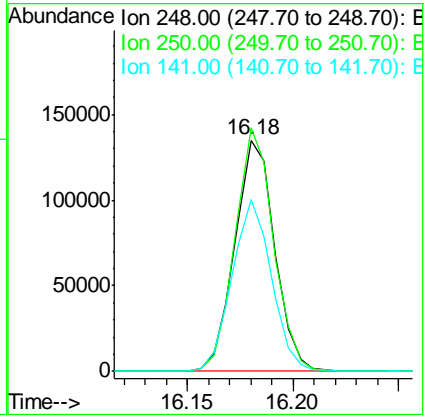
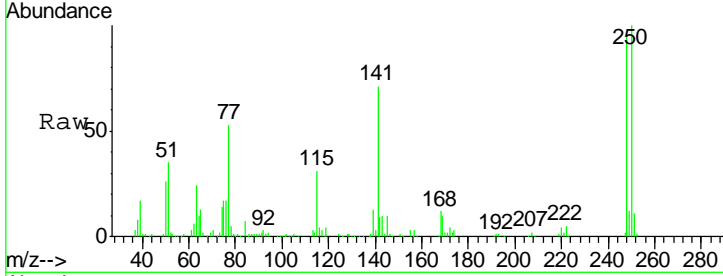




#65
 4-Bromophenyl-phenylether
 Concen: 19.399 ng/ul
 RT: 16.18 min Scan# 2243
 Delta R.T. -0.00 min
 Lab File: BM013918.D
 Acq: 28 Jan 2018 12:40

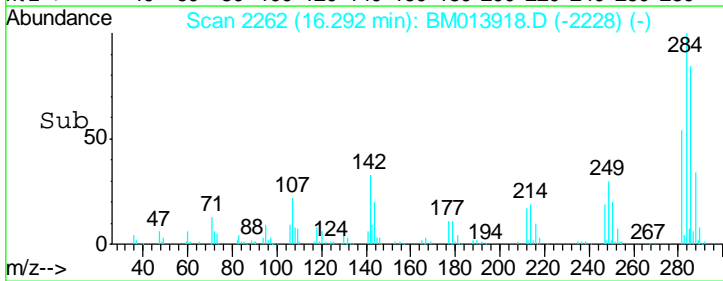
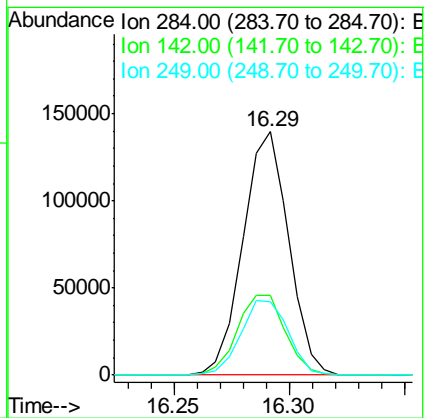
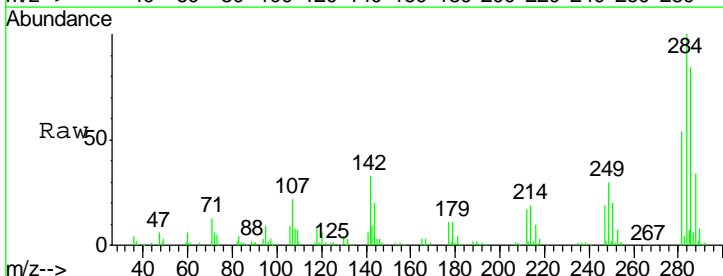
Instrument :
 BNA_M
 ClientSampled :

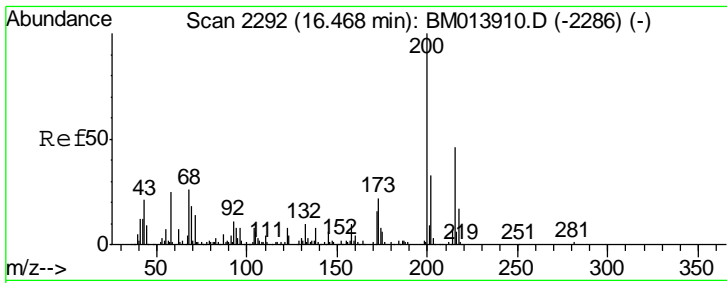
Tgt Ion	Resp	Lower	Upper
248	176538		
250	105.2	80.5	120.7
141	74.4	53.6	80.4



#66
 Hexachlorobenzene
 Concen: 19.671 ng/ul
 RT: 16.29 min Scan# 2262
 Delta R.T. -0.00 min
 Lab File: BM013918.D
 Acq: 28 Jan 2018 12:40

Tgt Ion	Resp	Lower	Upper
284	192689		
284	100		
142	32.9	21.2	31.8#
249	30.2	24.5	36.7

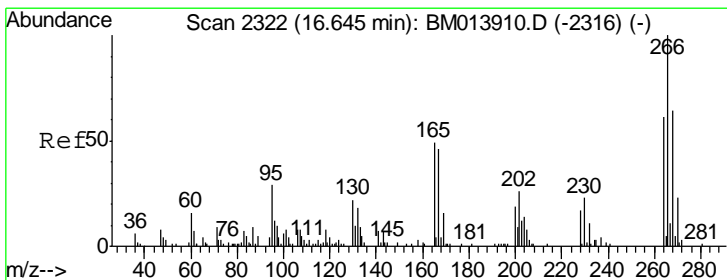
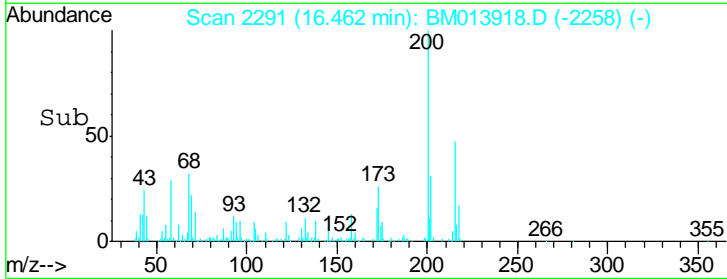
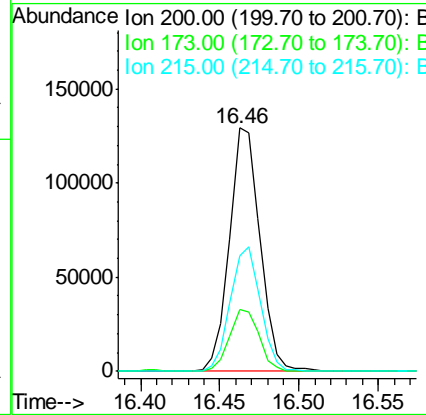
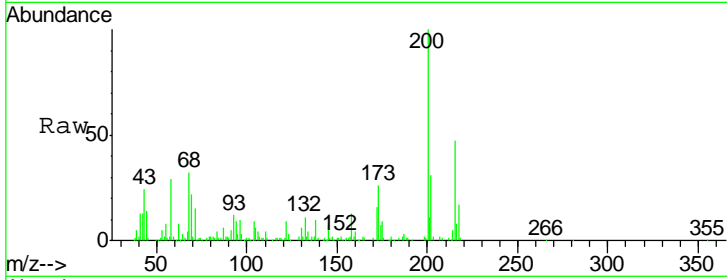




#67
 Atrazine
 Concen: 19.175 ng/ul
 RT: 16.46 min Scan# 2291
 Delta R.T. -0.01 min
 Lab File: BM013918.D
 Acq: 28 Jan 2018 12:40

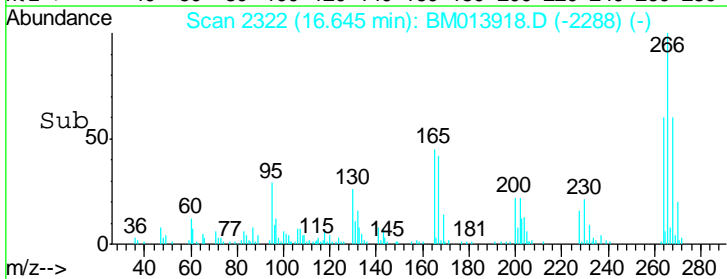
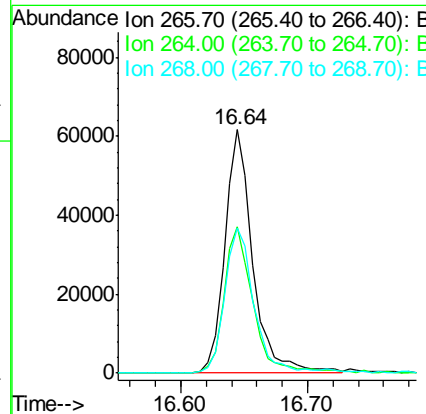
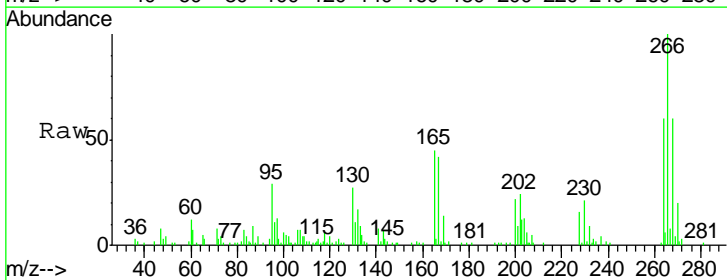
Instrument :
 BNA_M
 ClientSampled :

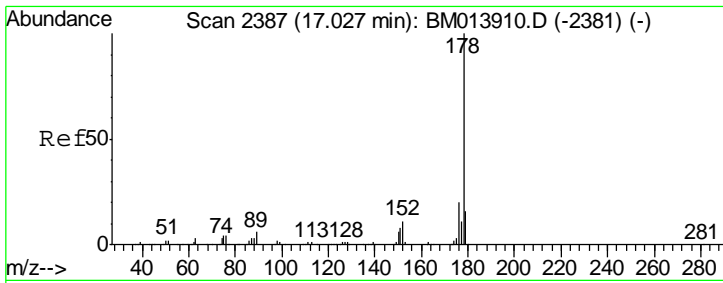
Tgt Ion	Resp	Lower	Upper
200	173430		
173	25.6	18.2	27.2
215	47.4	35.0	52.4



#68
 Pentachlorophenol
 Concen: 18.038 ng/ul
 RT: 16.64 min Scan# 2322
 Delta R.T. -0.00 min
 Lab File: BM013918.D
 Acq: 28 Jan 2018 12:40

Tgt Ion	Resp	Lower	Upper
266	93896		
264	60.0	49.3	73.9
268	59.8	52.6	78.8

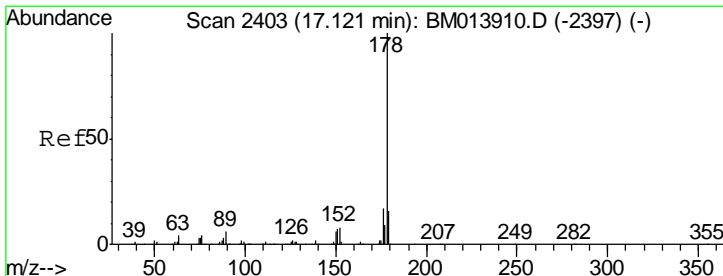
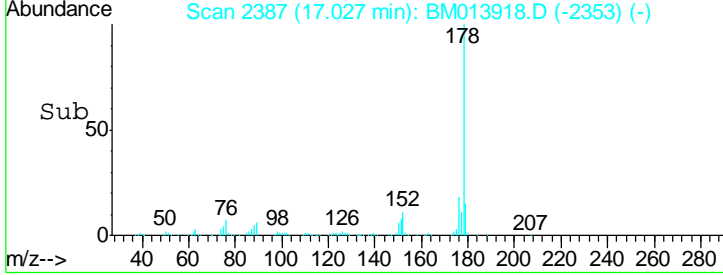
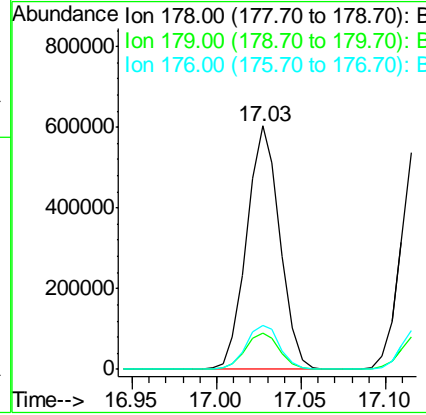
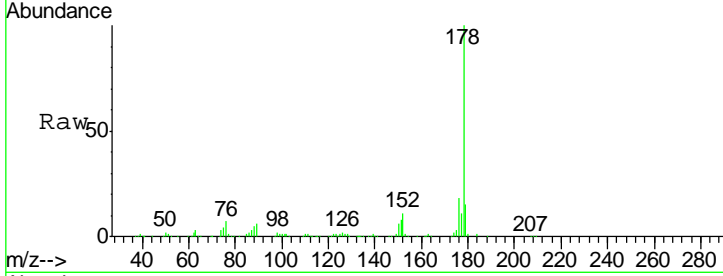




#69
 Phenanthrene
 Concen: 19.179 ng/ul
 RT: 17.03 min Scan# 2387
 Delta R.T. -0.00 min
 Lab File: BM013918.D
 Acq: 28 Jan 2018 12:40

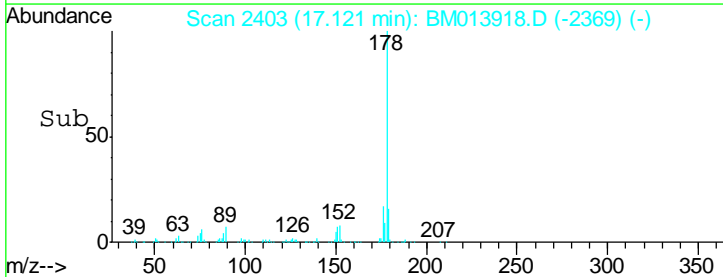
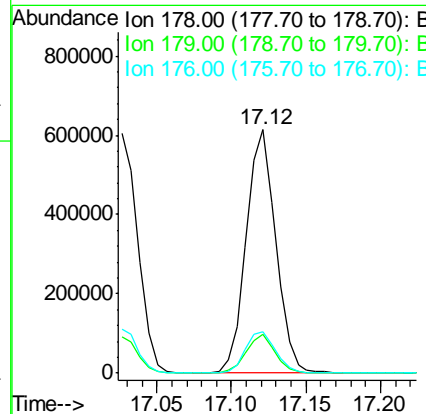
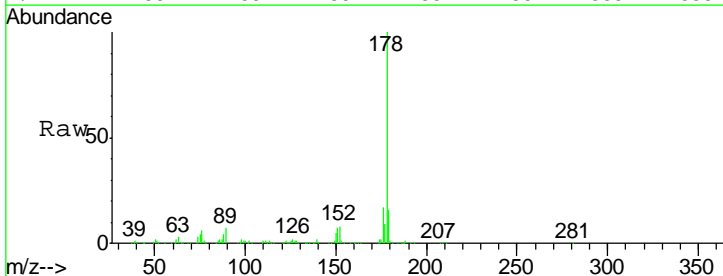
Instrument :
 BNA_M
 ClientSampled :

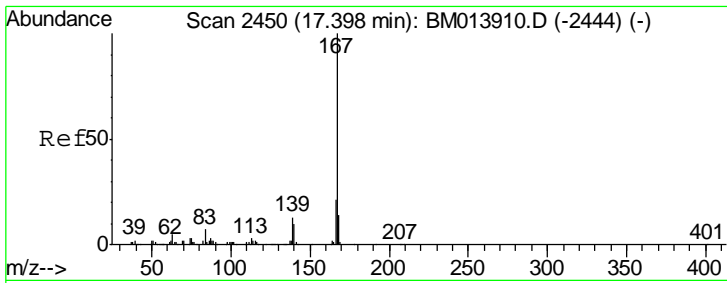
Tgt Ion	Resp	Lower	Upper
178	821418		
179	15.1	12.6	19.0
176	18.3	14.9	22.3



#71
 Anthracene
 Concen: 19.040 ng/ul
 RT: 17.12 min Scan# 2403
 Delta R.T. -0.00 min
 Lab File: BM013918.D
 Acq: 28 Jan 2018 12:40

Tgt Ion	Resp	Lower	Upper
178	841112		
179	15.9	11.7	17.5
176	16.9	14.6	21.8

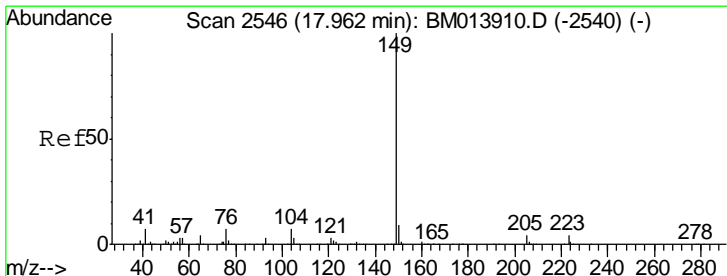
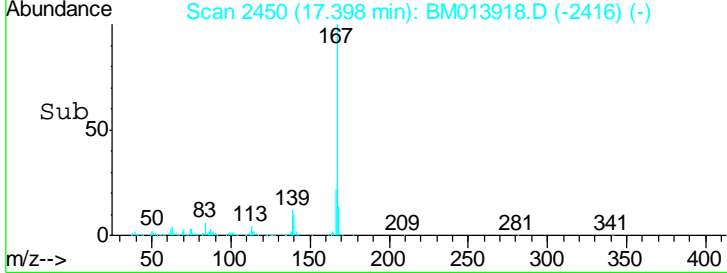
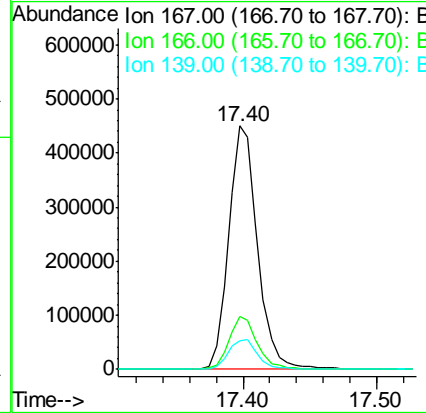
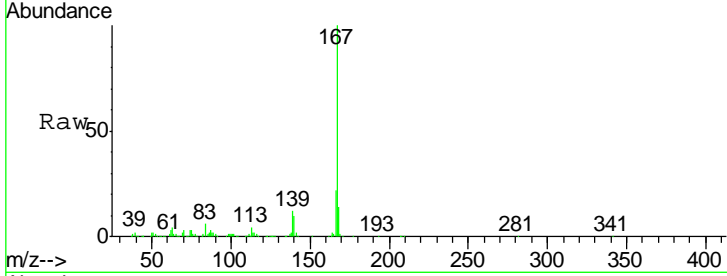




#72
 Carbazole
 Concen: 18.609 ng/ul
 RT: 17.40 min Scan# 2450
 Delta R.T. -0.00 min
 Lab File: BM013918.D
 Acq: 28 Jan 2018 12:40

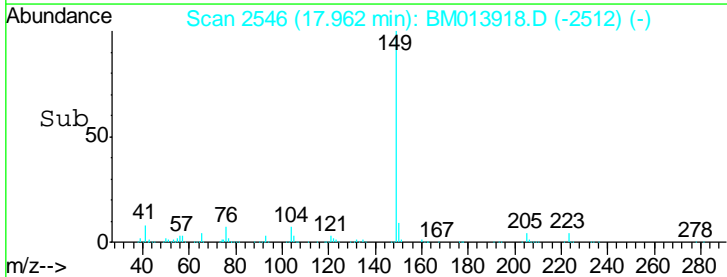
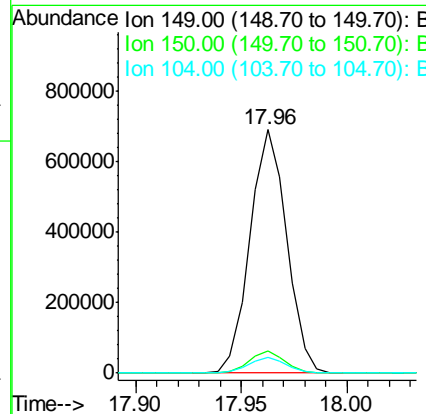
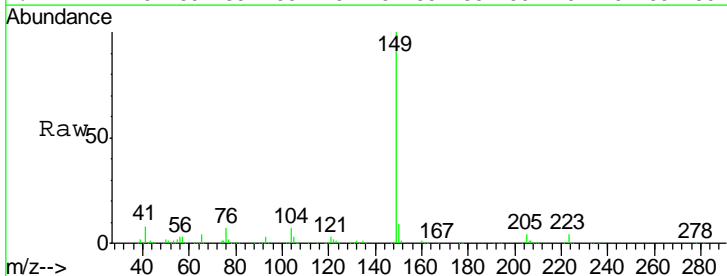
Instrument :
 BNA_M
 ClientSampled :

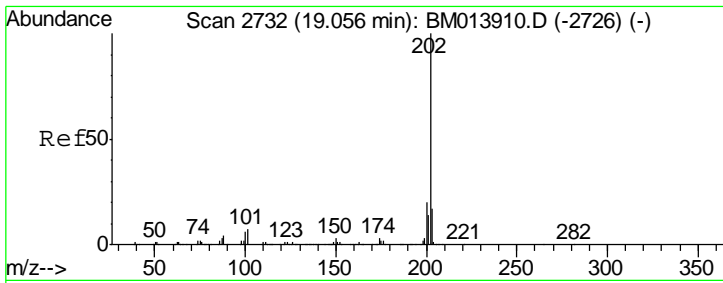
Tgt Ion	Resp	Lower	Upper
167	100		
166	21.6	17.1	25.7
139	11.6	10.0	15.0



#73
 Di-n-butylphthalate
 Concen: 19.542 ng/ul
 RT: 17.96 min Scan# 2546
 Delta R.T. -0.00 min
 Lab File: BM013918.D
 Acq: 28 Jan 2018 12:40

Tgt Ion	Resp	Lower	Upper
149	100		
150	9.0	7.1	10.7
104	6.5	5.6	8.4

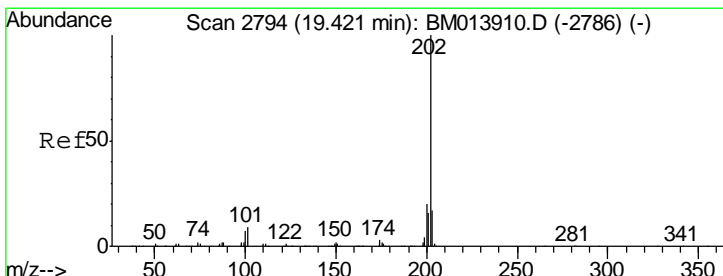
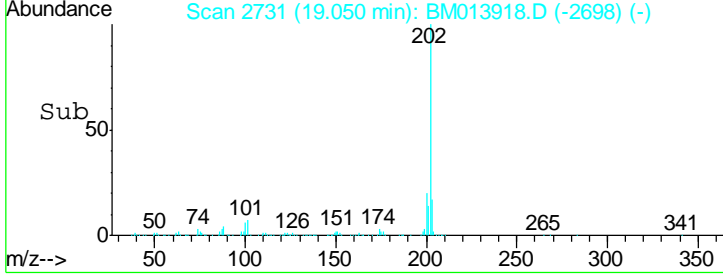
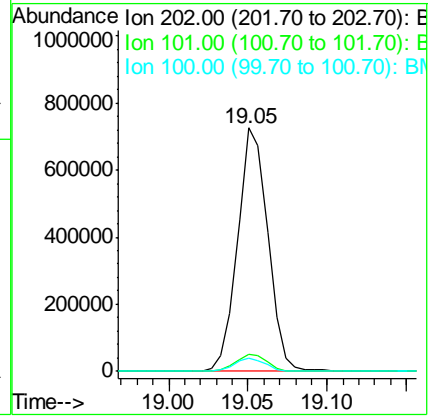
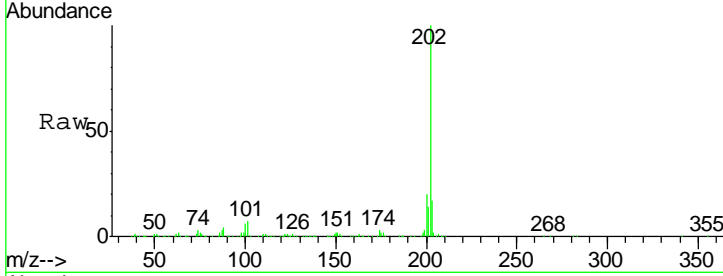




#74
 Fluoranthene
 Concen: 18.789 ng/ul
 RT: 19.05 min Scan# 2731
 Delta R.T. -0.01 min
 Lab File: BM013918.D
 Acq: 28 Jan 2018 12:40

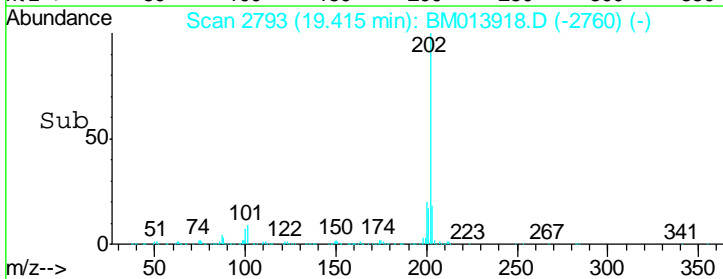
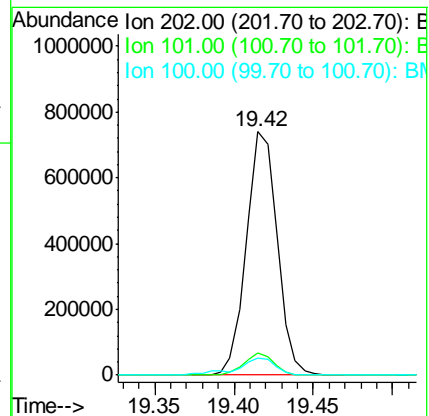
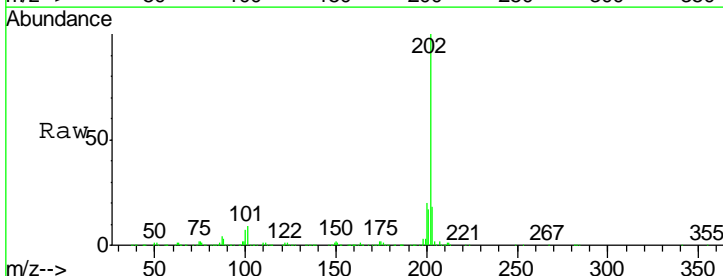
Instrument :
 BNA_M
 ClientSampled :

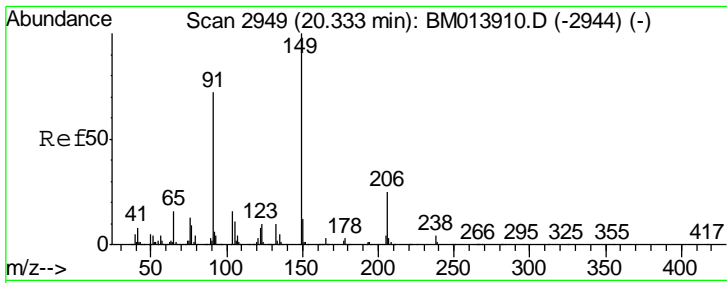
Tgt Ion	Resp	Lower	Upper
202	100		
101	7.1	4.6	7.0#
100	5.6	3.4	5.2#



#77
 Pyrene
 Concen: 20.385 ng/ul
 RT: 19.42 min Scan# 2793
 Delta R.T. -0.01 min
 Lab File: BM013918.D
 Acq: 28 Jan 2018 12:40

Tgt Ion	Resp	Lower	Upper
202	100		
101	9.1	5.1	7.7#
100	6.9	4.9	7.3

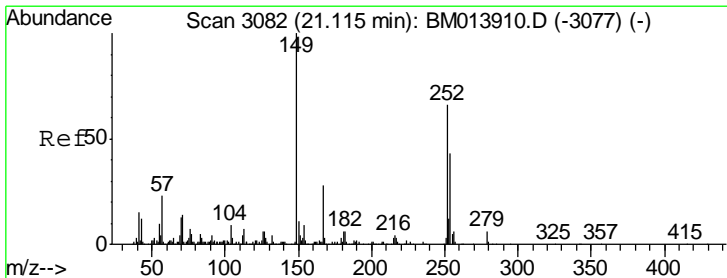
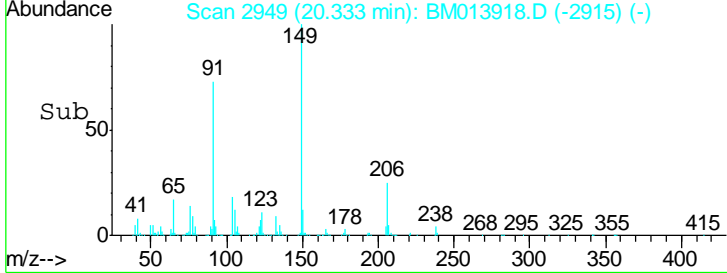
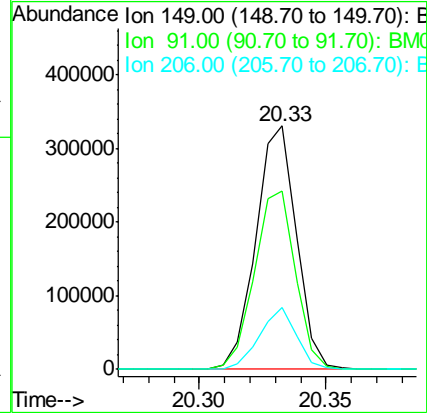
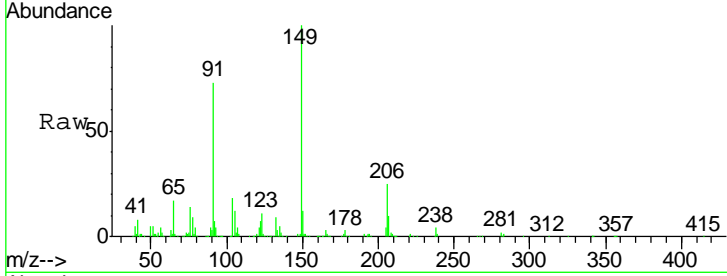




#78
 Butylbenzylphthalate
 Concen: 21.289 ng/ul
 RT: 20.33 min Scan# 2949
 Delta R.T. -0.00 min
 Lab File: BM013918.D
 Acq: 28 Jan 2018 12:40

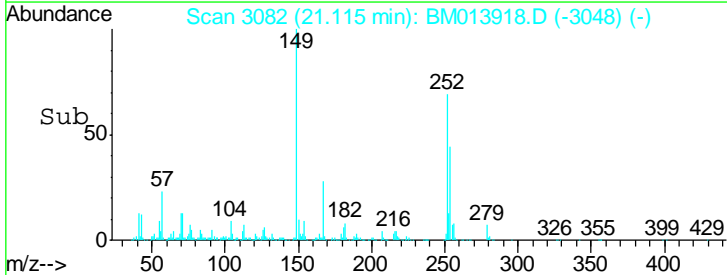
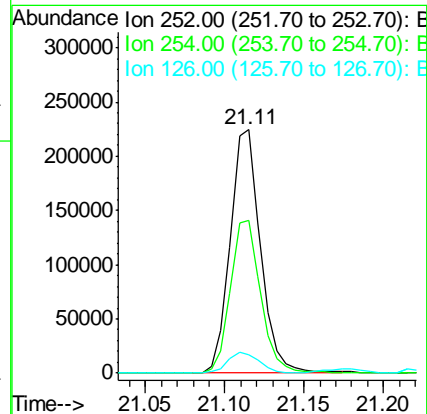
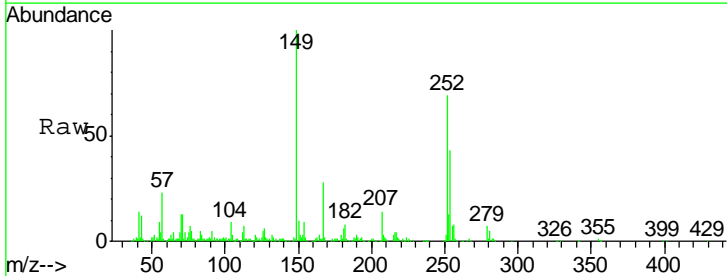
Instrument :
 BNA_M
 ClientSampled :

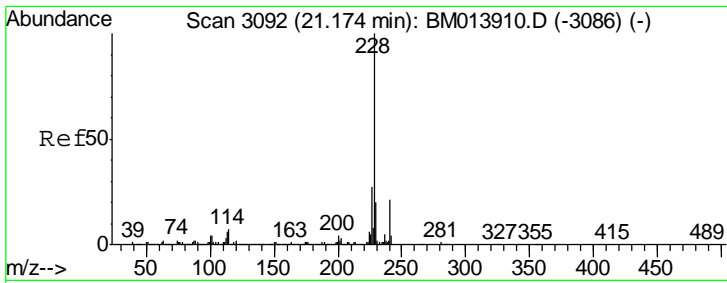
Tgt Ion	Resp	Lower	Upper
149	368468		
91	73.4	62.7	94.1
206	25.3	20.8	31.2



#79
 3,3'-Dichlorobenzidine
 Concen: 22.269 ng/ul
 RT: 21.11 min Scan# 3082
 Delta R.T. -0.00 min
 Lab File: BM013918.D
 Acq: 28 Jan 2018 12:40

Tgt Ion	Resp	Lower	Upper
252	297740		
254	62.9	54.5	81.7
126	7.7	5.8	8.8

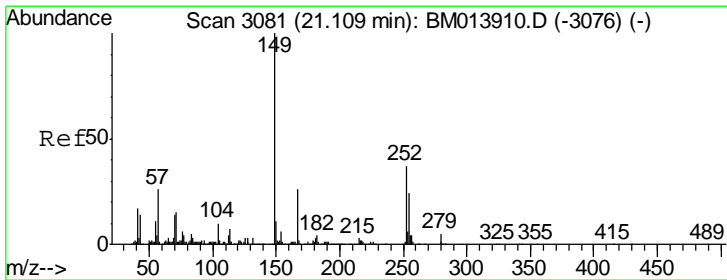
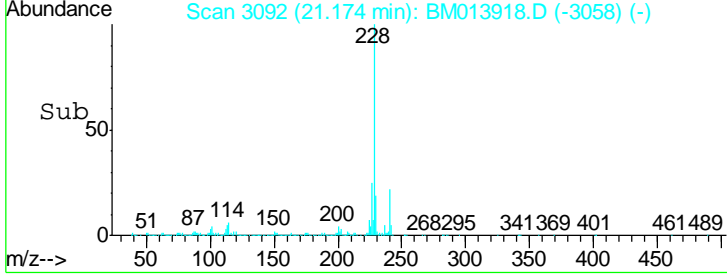
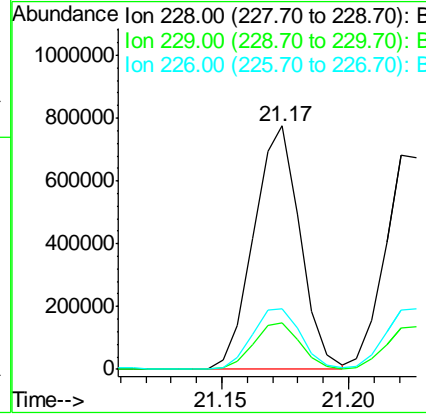
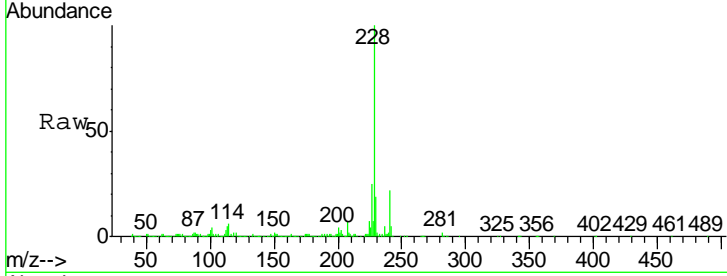




#80
 Benzo(a)anthracene
 Concen: 20.153 ng/ul
 RT: 21.17 min Scan# 3092
 Delta R.T. -0.00 min
 Lab File: BM013918.D
 Acq: 28 Jan 2018 12:40

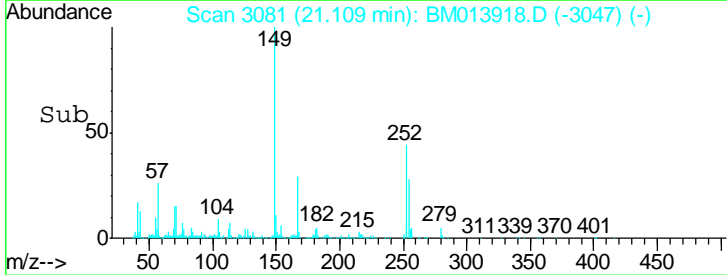
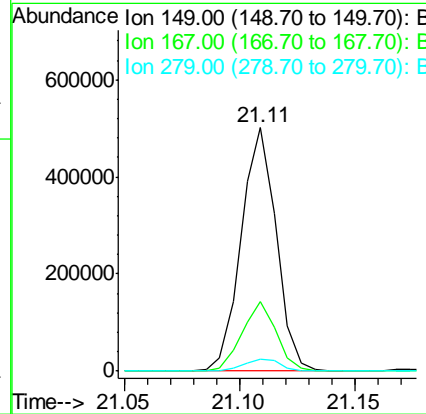
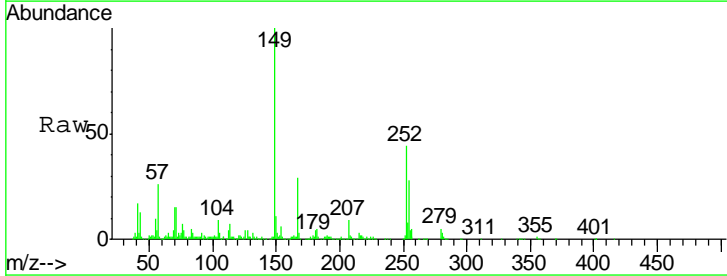
Instrument :
 BNA_M
 ClientSampled :

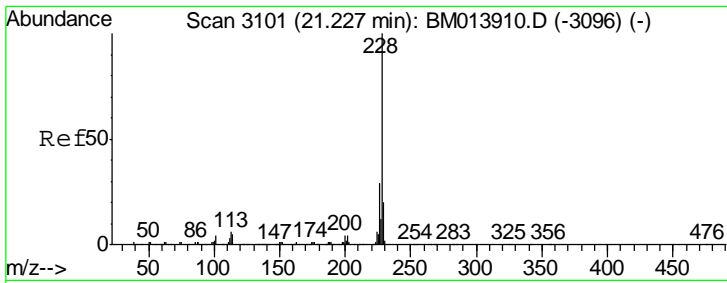
Tgt Ion	Resp	Lower	Upper
228	984223		
229	18.9	15.4	23.0
226	24.7	21.4	32.0



#81
 Bis(2-ethylhexyl)phthalate
 Concen: 20.316 ng/ul
 RT: 21.11 min Scan# 3081
 Delta R.T. -0.00 min
 Lab File: BM013918.D
 Acq: 28 Jan 2018 12:40

Tgt Ion	Resp	Lower	Upper
149	527552		
167	28.7	22.8	34.2
279	4.9	4.9	7.3#

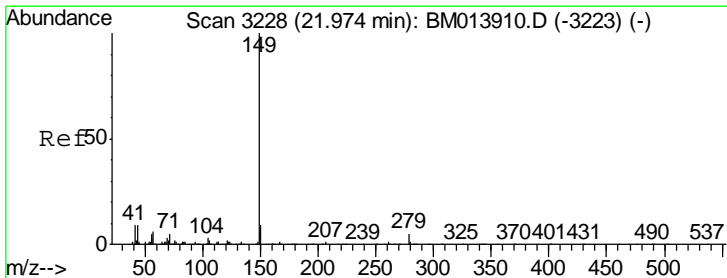
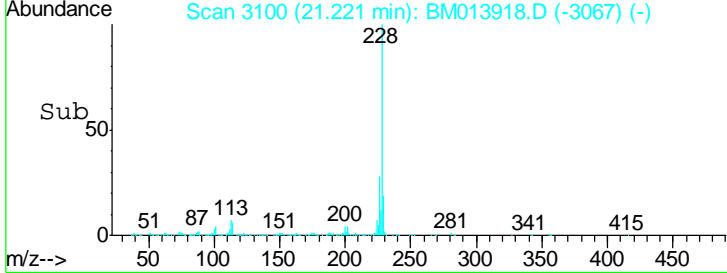
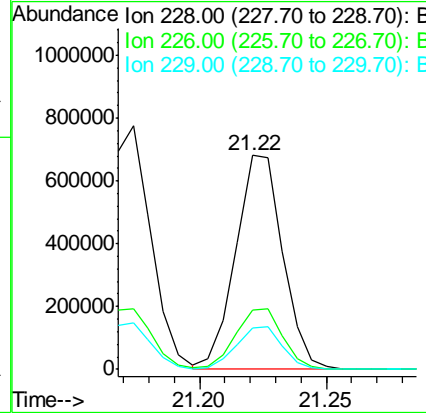
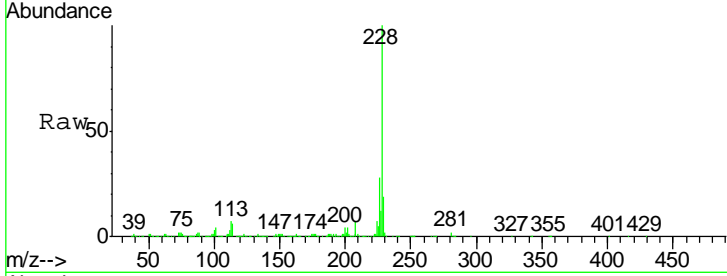




#82
 Chrysene
 Concen: 19.611 ng/ul
 RT: 21.22 min Scan# 3100
 Delta R.T. -0.01 min
 Lab File: BM013918.D
 Acq: 28 Jan 2018 12:40

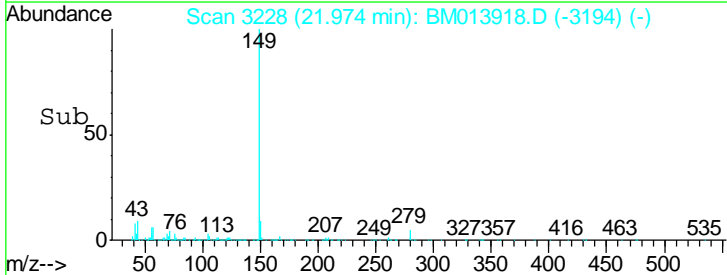
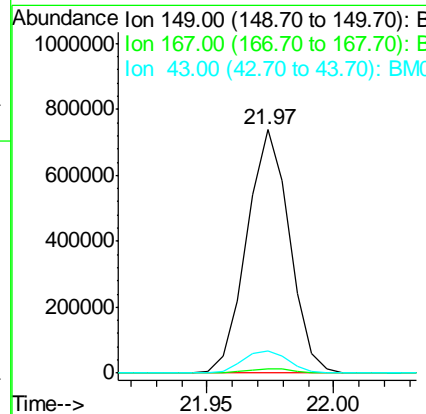
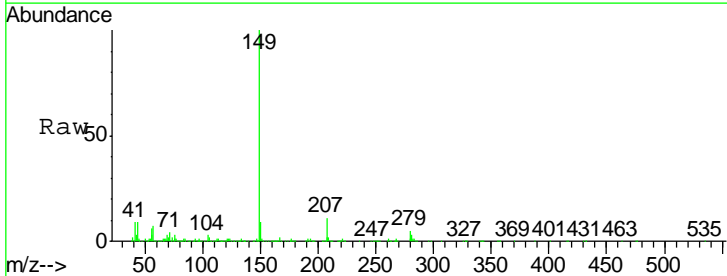
Instrument : BNA_M
 ClientSampled :

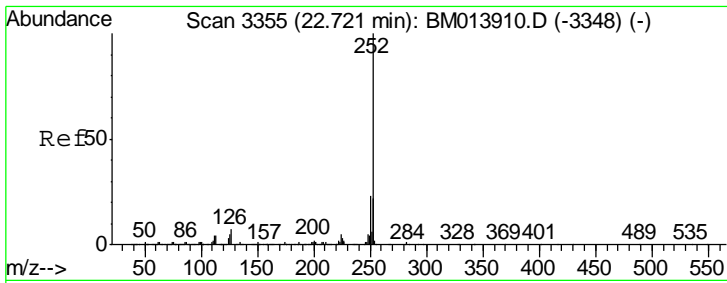
Tot Ion:228	Resp:	878621
Ion Ratio	Lower	Upper
228	100	
226	27.8	23.4 35.2
229	19.4	15.5 23.3



#84
 Di-n-octyl phthalate
 Concen: 17.958 ng/ul
 RT: 21.97 min Scan# 3228
 Delta R.T. -0.00 min
 Lab File: BM013918.D
 Acq: 28 Jan 2018 12:40

Tgt Ion:149	Resp:	862009
Ion Ratio	Lower	Upper
149	100	
167	1.6	1.3 1.9
43	9.3	7.3 10.9

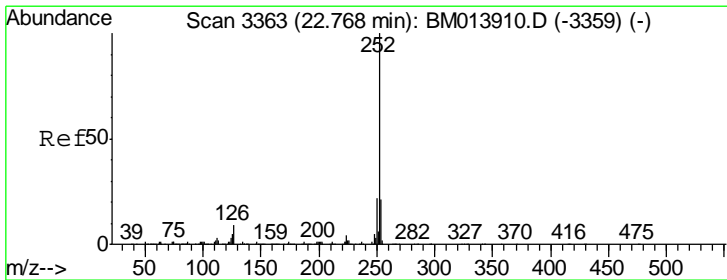
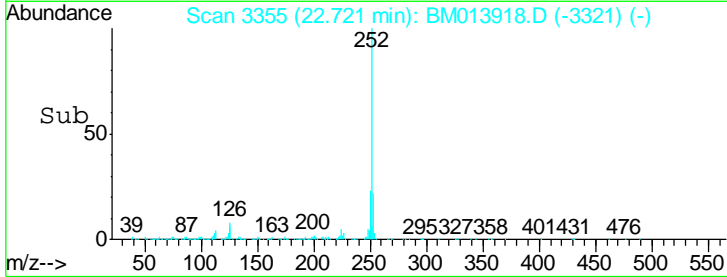
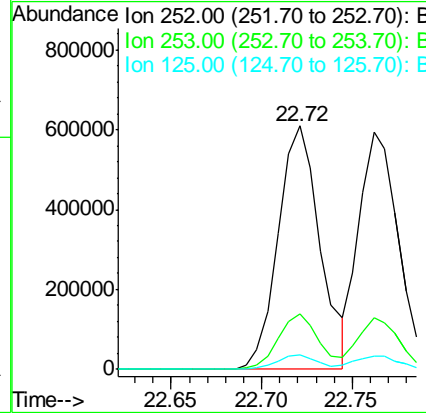
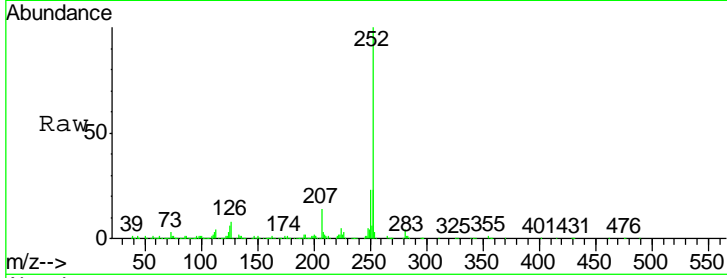




#85
 Benzo(b)fluoranthene
 Concen: 20.119 ng/ul
 RT: 22.72 min Scan# 3355
 Delta R.T. -0.00 min
 Lab File: BM013918.D
 Acq: 28 Jan 2018 12:40

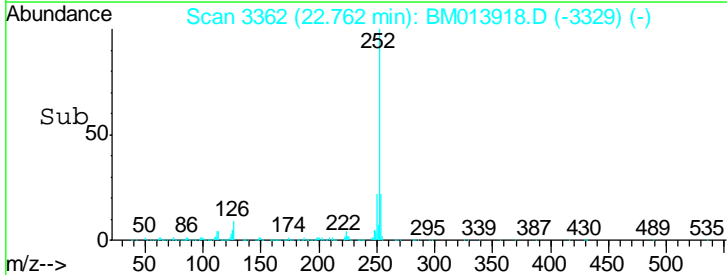
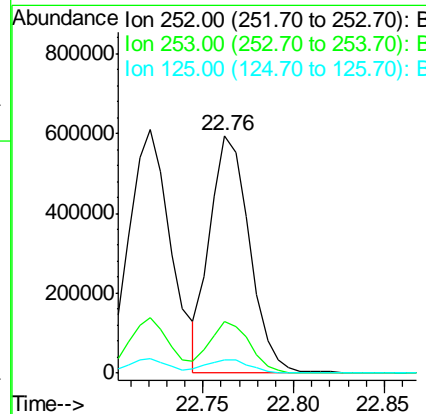
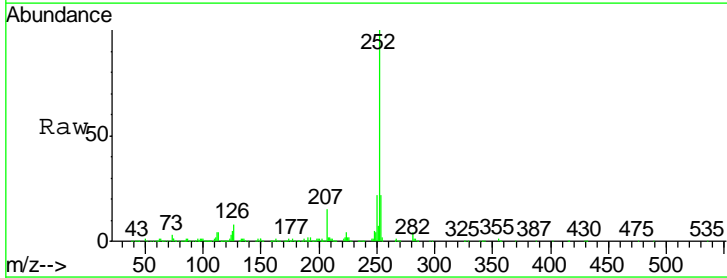
Instrument :
 BNA_M
 ClientSampled :

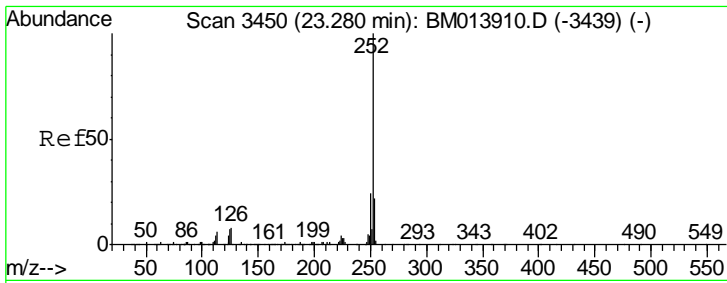
Tgt Ion	Resp	Lower	Upper
252	984164		
253	22.5	17.9	26.9
125	5.9	3.6	5.4#



#86
 Benzo(k)fluoranthene
 Concen: 18.982 ng/ul
 RT: 22.76 min Scan# 3362
 Delta R.T. -0.01 min
 Lab File: BM013918.D
 Acq: 28 Jan 2018 12:40

Tgt Ion	Resp	Lower	Upper
252	897499		
253	21.7	17.1	25.7
125	5.4	3.4	5.2#

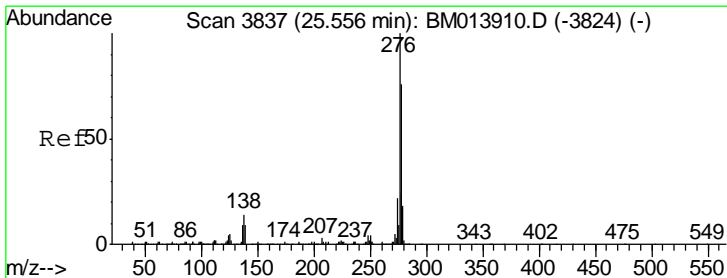
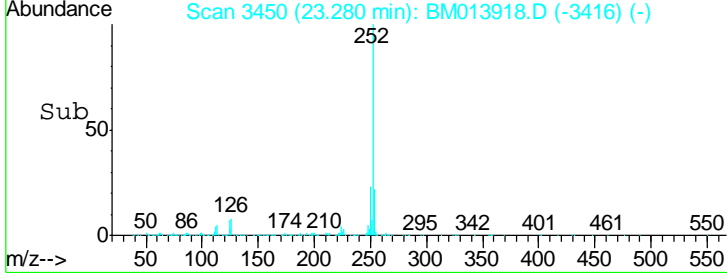
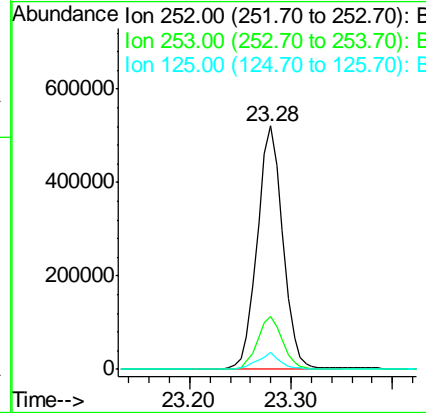
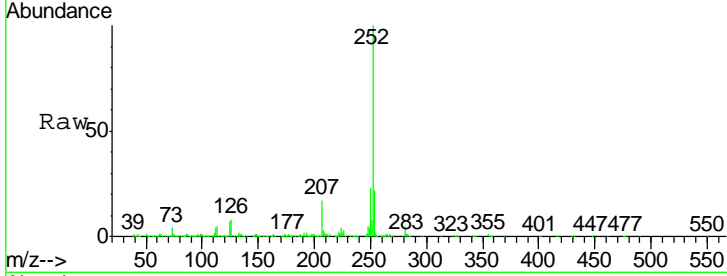




#88
 Benzo(a)pyrene
 Concen: 19.786 ng/ul
 RT: 23.28 min Scan# 3450
 Delta R.T. -0.00 min
 Lab File: BM013918.D
 Acq: 28 Jan 2018 12:40

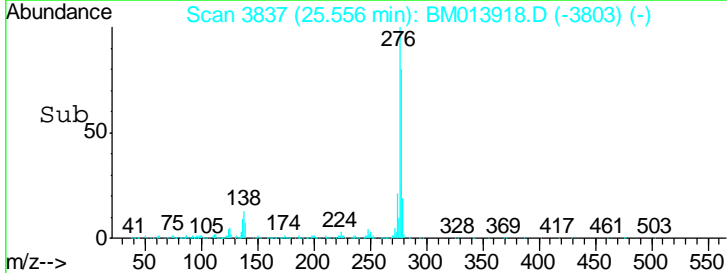
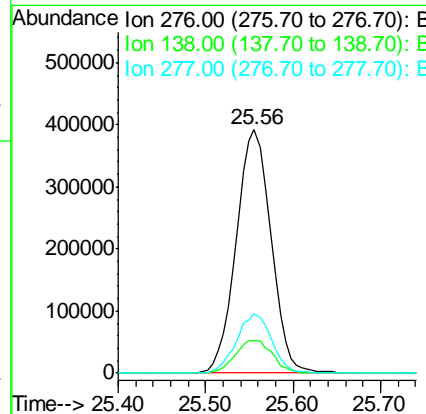
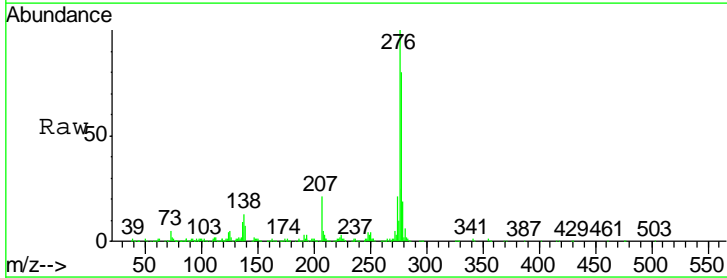
Instrument :
 BNA_M
 ClientSampled :

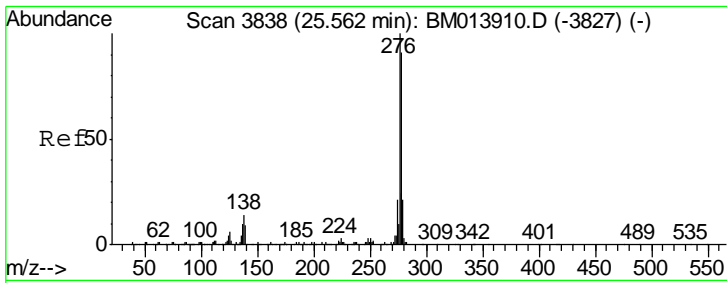
Tgt Ion	Resp	Lower	Upper
252	914308		
253	21.8	18.2	27.2
125	6.9	4.0	6.0



#89
 Indeno(1,2,3-cd)pyrene
 Concen: 19.468 ng/ul
 RT: 25.56 min Scan# 3837
 Delta R.T. -0.00 min
 Lab File: BM013918.D
 Acq: 28 Jan 2018 12:40

Tgt Ion	Resp	Lower	Upper
276	1061944		
138	13.3	9.3	13.9
277	24.5	19.9	29.9

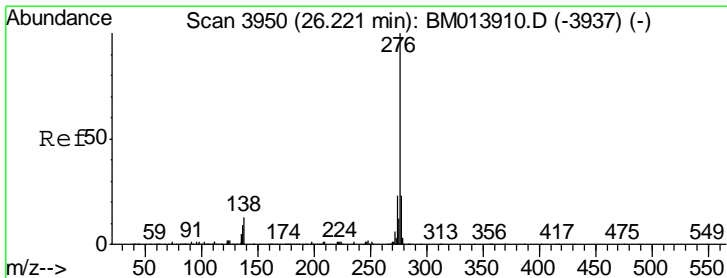
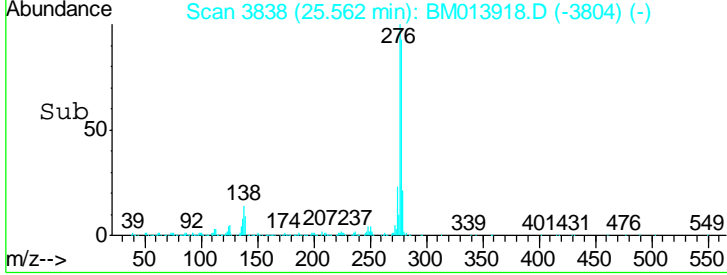
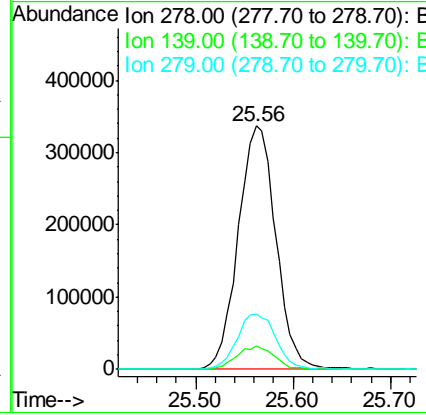
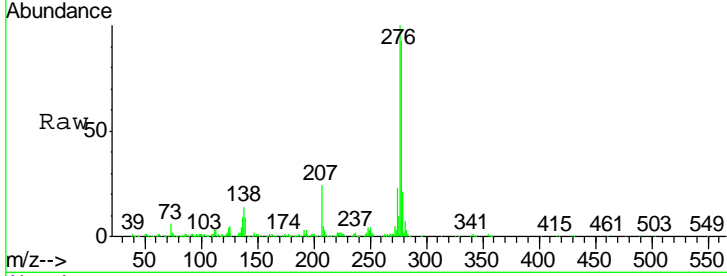




#90
 Dibenzo(a,h)anthracene
 Concen: 19.588 ng/ul
 RT: 25.56 min Scan# 3838
 Delta R.T. -0.00 min
 Lab File: BM013918.D
 Acq: 28 Jan 2018 12:40

Instrument :
 BNA_M
 ClientSampled :

Tgt Ion	Resp	Lower	Upper
278	902325		
278	100		
139	9.6	5.8	8.8#
279	22.8	18.6	27.8



#91
 Benzo(g,h,i)perylene
 Concen: 19.844 ng/ul
 RT: 26.23 min Scan# 3951
 Delta R.T. 0.01 min
 Lab File: BM013918.D
 Acq: 28 Jan 2018 12:40

Tgt Ion	Resp	Lower	Upper
276	890879		
276	100		
138	11.4	8.5	12.7
277	23.1	18.6	28.0

