

Data Path : Z:\HPCHEM1\BNA M\DATA\BM012718\
 Data File : BM013898.D
 Acq On : 27 Jan 2018 23:30
 Operator : SJ/JU
 Sample : J1282-04
 Misc :
 ALS Vial : 22 Sample Multiplier: 1

Instrument :
 BNA_M
 ClientSampled :
 F6B85

Integration Parameters: LSCINT.P

Integrator: RTE
 Smoothing : OFF
 Sampling : 1
 Start Thrs: 0.2
 Stop Thrs : 0

Filtering: 5
 Min Area: 1 % of largest Peak
 Max Peaks: 100
 Peak Location: TOP

If leading or trailing edge < 100 prefer < Baseline drop else tangent >
 Peak separation: 5

Method : Z:\HPCHEM1\BNA M\Methods\SOM-EPA-BM011018.M
 Title : SVOA CALIBRATION

Signal : TIC

peak #	R.T. min	first scan	max scan	last scan	PK TY	peak height	corr. area	corr. % max.	% of total
1	3.146	23	27	32	rVB2	40124	53487	1.29%	0.118%
2	6.769	637	643	661	rVB2	743837	1382312	33.41%	3.062%
3	6.928	663	670	680	rBV	570246	872604	21.09%	1.933%
4	7.116	696	702	714	rVB	818635	1299401	31.40%	2.879%
5	7.581	774	781	791	rBV	578758	918936	22.21%	2.036%
6	8.292	896	902	920	rVB	949540	1599744	38.66%	3.544%
7	8.739	971	978	985	rBV	818369	1342663	32.45%	2.974%
8	9.134	1040	1045	1051	rBV3	43030	63054	1.52%	0.140%
9	9.451	1092	1099	1109	rBV	707375	1188896	28.73%	2.634%
10	9.986	1182	1190	1201	rBV	960327	1715225	41.45%	3.800%
11	10.357	1245	1253	1260	rBV	739013	1218234	29.44%	2.699%
12	10.504	1271	1278	1296	rBV	869177	1603681	38.76%	3.553%
13	13.657	1806	1814	1818	rBV	1754347	2532334	61.20%	5.610%
14	13.698	1818	1821	1828	rVB	278469	410294	9.92%	0.909%
15	13.922	1853	1859	1869	rBV	2031782	3067120	74.13%	6.795%
16	14.139	1889	1896	1901	rBV3	65166	90470	2.19%	0.200%
17	14.233	1905	1912	1925	rVB2	1081464	1659635	40.11%	3.677%
18	14.469	1946	1952	1967	rBV	447302	942138	22.77%	2.087%
19	15.098	2054	2059	2064	rBV	79325	104505	2.53%	0.232%
20	15.233	2072	2082	2089	rBV	2527743	3599252	86.99%	7.974%
21	15.374	2101	2106	2117	rBV	611446	959086	23.18%	2.125%
22	15.474	2119	2123	2126	rBV4	28875	45270	1.09%	0.100%
23	15.963	2201	2206	2214	rBV2	77114	126016	3.05%	0.279%
24	16.757	2337	2341	2344	rBV3	50504	63022	1.52%	0.140%
25	16.986	2374	2380	2390	rBV2	1370694	1928051	46.60%	4.271%
26	17.086	2391	2397	2409	rVB2	2674788	3778857	91.33%	8.371%
27	17.892	2527	2534	2543	rBV3	185330	291723	7.05%	0.646%
28	19.033	2724	2728	2731	rBV2	47465	64847	1.57%	0.144%
29	19.180	2748	2753	2759	rBV4	79909	123693	2.99%	0.274%
30	19.392	2783	2789	2796	rBV2	3064737	4137619	100.00%	9.166%
31	20.909	3043	3047	3054	rBV5	118322	200255	4.84%	0.444%
32	21.192	3090	3095	3102	rBV	1493607	2035836	49.20%	4.510%
33	22.221	3267	3270	3275	rVB7	90975	104809	2.53%	0.232%
34	23.239	3436	3443	3455	rVB2	2064068	3841235	92.84%	8.510%

Data Path : Z:\HPCHEM1\BNA M\DATA\BM012718\
Data File : BM013898.D
Acq On : 27 Jan 2018 23:30
Operator : SJ/JU
Sample : J1282-04
Misc :
ALS Vial : 22 Sample Multiplier: 1

Instrument :
BNA_M
ClientSampleId :
F6B85

Integration Parameters: LSCINT.P
Integrator: RTE
Smoothing : OFF Filtering: 5
Sampling : 1 Min Area: 1 % of largest Peak
Start Thrs: 0.2 Max Peaks: 100
Stop Thrs : 0 Peak Location: TOP

If leading or trailing edge < 100 prefer < Baseline drop else tangent >
Peak separation: 5

Method : Z:\HPCHEM1\BNA_M\Methods\SOM-EPA-BM011018.M
Title : SVOA CALIBRATION

35	23.380	3461	3467	3474	rVB	955336	1775373	42.91%	3.933%
----	--------	------	------	------	-----	--------	---------	--------	--------

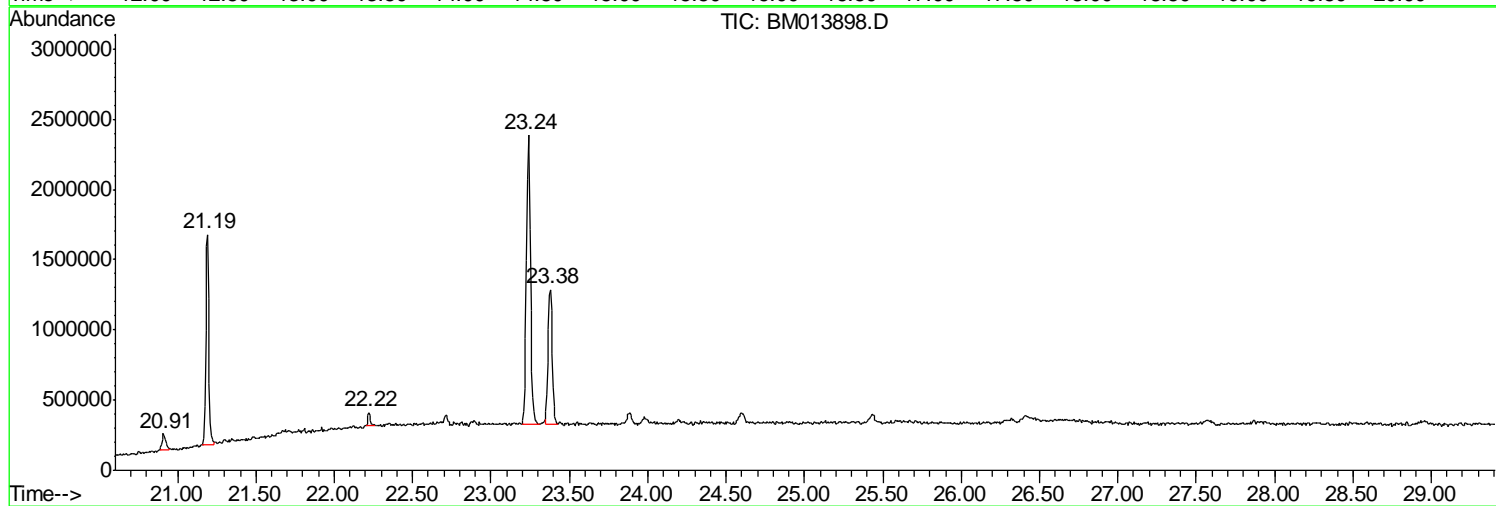
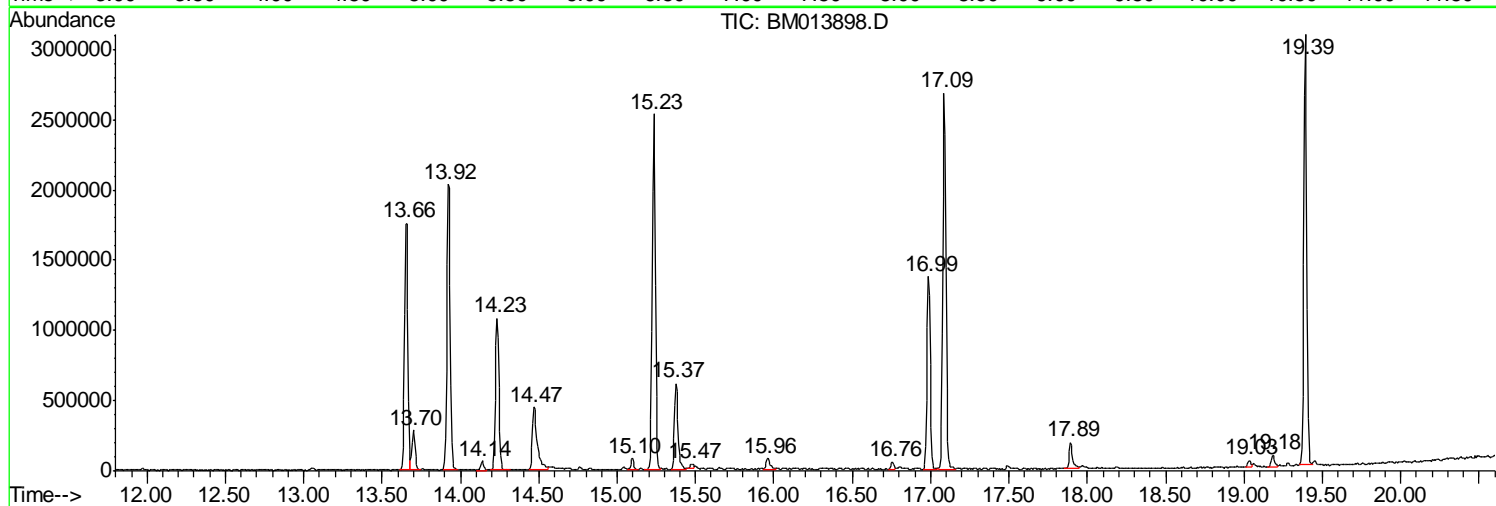
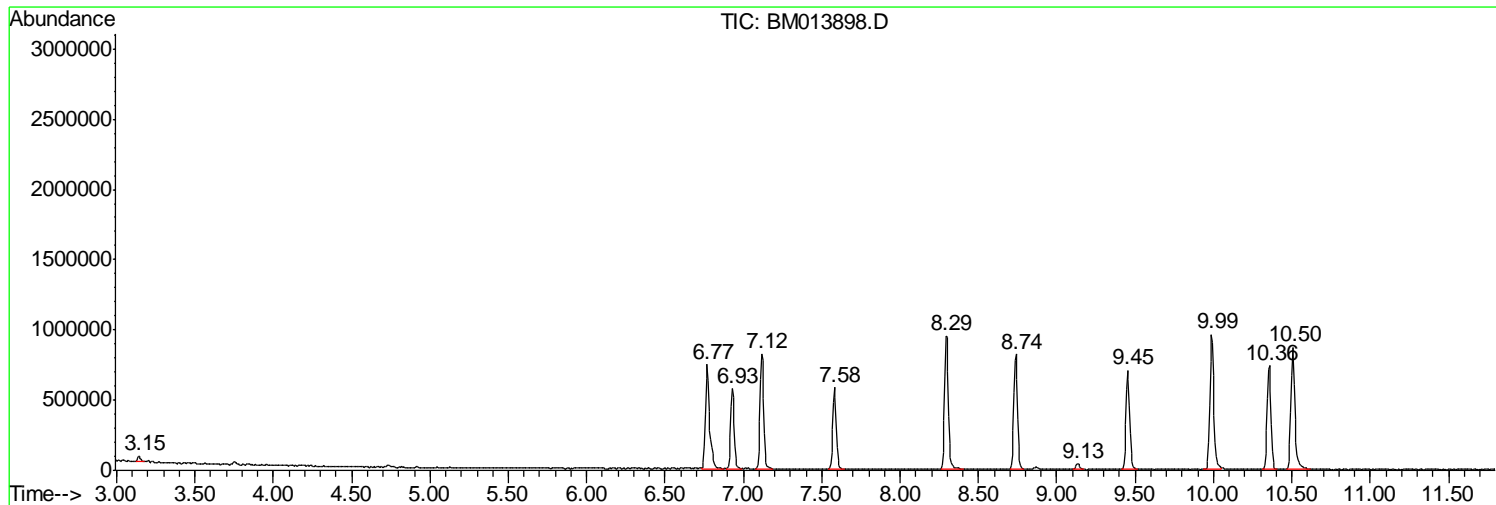
Sum of corrected areas: 45139677

Data Path : Z:\HPCHEM1\BNA M\DATA\BM012718\
Data File : BM013898.D
Acq On : 27 Jan 2018 23:30
Operator : SJ/JU
Sample : J1282-04
Misc :
ALS Vial : 22 Sample Multiplier: 1

Instrument :
BNA_M
ClientSampled :
F6B85

Quant Method : Z:\HPCHEM1\BNA M\METHODS\SOM-EPA-BM011018.M
Quant Title : SVOA CALIBRATION

TIC Library : C:\DATABASE\NIST11.L
TIC Integration Parameters: LSCINT.P



Data Path : Z:\HPCHEM1\BNA M\DATA\BM012718\
 Data File : BM013898.D
 Acq On : 27 Jan 2018 23:30
 Operator : SJ/JU
 Sample : J1282-04
 Misc :
 ALS Vial : 22 Sample Multiplier: 1

Instrument :
 BNA_M
 ClientSampleId :
 F6B85

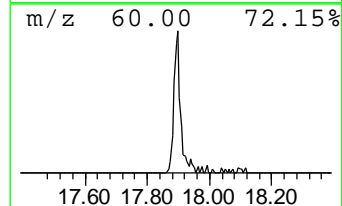
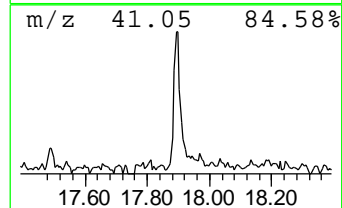
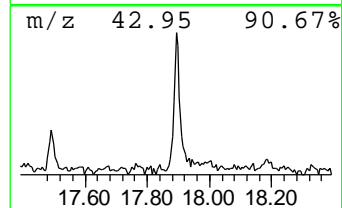
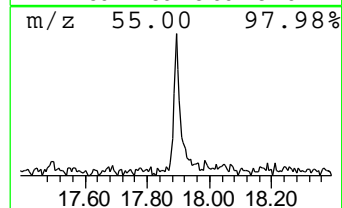
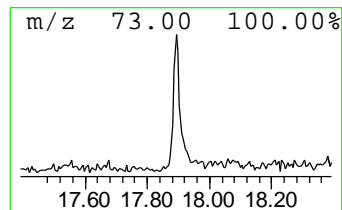
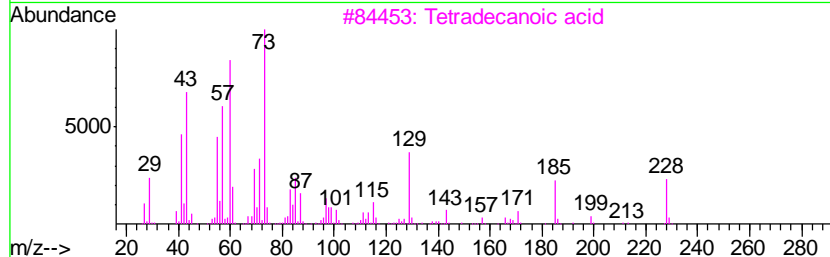
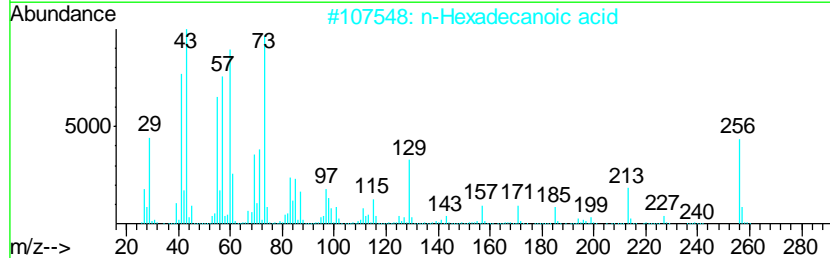
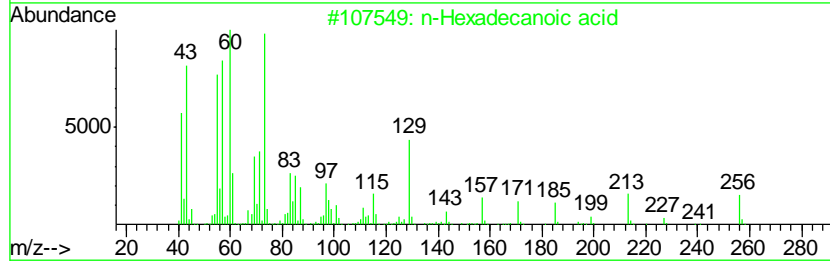
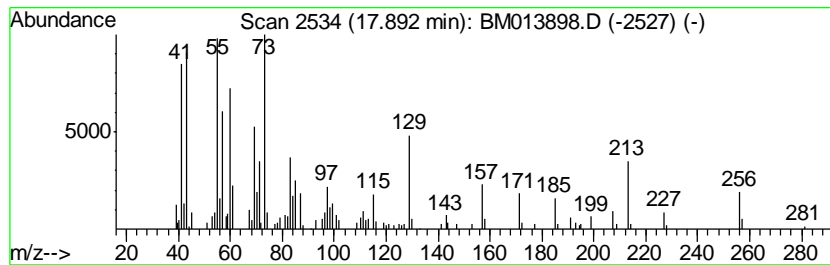
Quant Method : Z:\HPCHEM1\BNA M\METHODS\SOM-EPA-BM011018.M
 Quant Title : SVOA CALIBRATION

TIC Library : C:\DATABASE\NIST11.L
 TIC Integration Parameters: LSCINT.P

 Peak Number 1 n-Hexadecanoic acid Concentration Rank 1

R.T.	EstConc	Area	Relative to ISTD	R.T.
17.89	3.03 ng/ul	291723	Phenanthrene-d10	16.99

Hit#	of	Tentative ID	MW	MolForm	CAS#	Qual
1	5	n-Hexadecanoic acid	256	C16H32O2	000057-10-3	96
2		n-Hexadecanoic acid	256	C16H32O2	000057-10-3	95
3		Tetradecanoic acid	228	C14H28O2	000544-63-8	78
4		Pentadecanoic acid	242	C15H30O2	001002-84-2	62
5		n-Hexadecanoic acid	256	C16H32O2	000057-10-3	60



Data Path : Z:\HPCHEM1\BNA_M\DATA\BM012718\
Data File : BM013898.D
Acq On : 27 Jan 2018 23:30
Operator : SJ/JU
Sample : J1282-04
Misc :
ALS Vial : 22 Sample Multiplier: 1

Instrument :
BNA_M
ClientSampleId :
F6B85

Quant Method : Z:\HPCHEM1\BNA_M\METHODS\SOM-EPA-BM011018.M
Quant Title : SVOA CALIBRATION

TIC Library : C:\DATABASE\NIST11.L
TIC Integration Parameters: LSCINT.P

TIC Top Hit name	RT	EstConc	Units	Response	--Internal Standard--			
					#	RT	Resp	Conc
n-Hexadecanoic acid	17.89	3.0	ng/ul	291723	4	16.99	1928050	20.0