

Data Path : Z:\svoasrv\HPCHEM1\BNA_M\Data\BM012825\
 Data File : BM049511.D
 Acq On : 29 Jan 2025 19:34
 Operator : RC/JU
 Sample : Q1189-17
 Misc :
 ALS Vial : 13 Sample Multiplier: 1

Instrument :
 BNA_M
 ClientSampleId :
 A44R8

Quant Time: Jan 30 07:34:10 2025
 Quant Method : Z:\svoasrv\HPCHEM1\BNA_M\Methods\SFAM-EPA-BM012825.MA.M
 Quant Title : SVOA CALIBRATION
 QLast Update : Tue Jan 28 14:45:18 2025
 Response via : Initial Calibration

Compound	R.T.	QIon	Response	Conc	Units	Dev(Min)

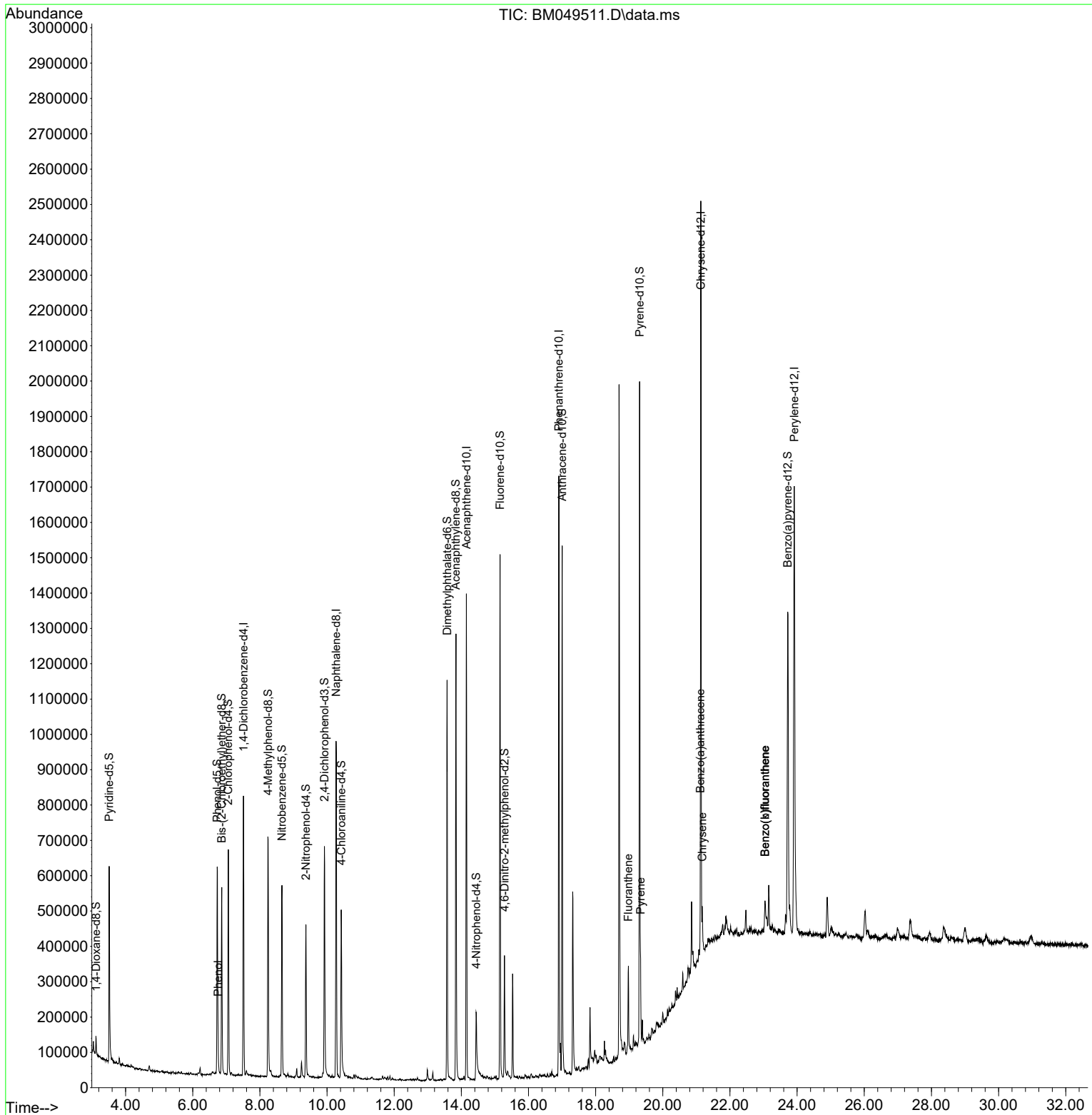
Internal Standards						
1) 1,4-Dichlorobenzene-d4	7.510	152	217005	20.000	ng/ul	0.00
20) Naphthalene-d8	10.269	136	787906	20.000	ng/ul	0.00
38) Acenaphthene-d10	14.151	164	486079	20.000	ng/ul	0.00
64) Phenanthrene-d10	16.904	188	971732	20.000	ng/ul	0.00
79) Chrysene-d12	21.133	240	1057946	20.000	ng/ul	0.00
88) Perylene-d12	23.915	264	1156886	20.000	ng/ul	0.00
System Monitoring Compounds						
3) 1,4-Dioxane-d8	3.116	96	22437	3.831	ng/uL	0.00
4) Pyridine-d5	3.511	84	295802	17.190	ng/ul	0.00
7) Phenol-d5	6.728	99	373620	21.217	ng/ul	0.02
9) Bis-(2-Chloroethyl)eth...	6.863	67	237413	19.716	ng/ul	0.00
11) 2-Chlorophenol-d4	7.057	132	302176	22.175	ng/ul	0.00
15) 4-Methylphenol-d8	8.245	113	272802	21.145	ng/ul	0.02
21) Nitrobenzene-d5	8.657	128	135097	22.413	ng/ul	0.00
24) 2-Nitrophenol-d4	9.369	143	154127	23.442	ng/ul	0.00
28) 2,4-Dichlorophenol-d3	9.922	165	280113	20.877	ng/ul	0.02
31) 4-Chloroaniline-d4	10.422	131	303141	17.614	ng/ul	0.00
46) Dimethylphthalate-d6	13.575	166	809189	22.704	ng/ul	0.00
49) Acenaphthylene-d8	13.839	160	868314	20.736	ng/ul	0.00
54) 4-Nitrophenol-d4	14.445	143	81665	13.968	ng/ul	0.06
60) Fluorene-d10	15.151	176	608017	19.399	ng/ul	0.00
65) 4,6-Dinitro-2-methylph...	15.286	200	87327	14.261	ng/ul	0.00
73) Anthracene-d10	17.004	188	892568	18.394	ng/ul	0.00
81) Pyrene-d10	19.309	212	1041951	16.847	ng/ul	0.00
92) Benzo(a)pyrene-d12	23.721	264	880980	14.278	ng/ul	0.00
Target Compounds						
						Qvalue
8) Phenol	6.757	94	23082	1.249	ng/ul	97
80) Fluoranthene	18.974	202	149373	2.115	ng/ul	98
82) Pyrene	19.339	202	143459	1.887	ng/ul	98
85) Benzo(a)anthracene	21.115	228	85371	1.149	ng/ul	97
87) Chrysene	21.174	228	85012	1.232	ng/ul	98
90) Benzo(b)fluoranthene	23.045	252	94674	1.263	ng/ul#	95
91) Benzo(k)fluoranthene	23.045	252	94674	1.249	ng/ul#	95

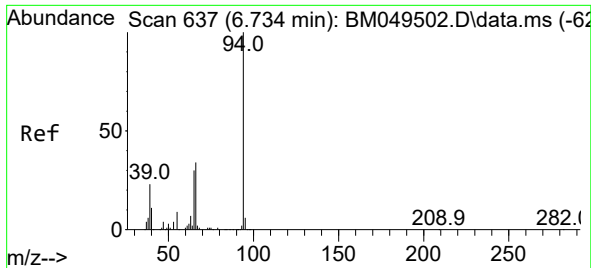
(#) = qualifier out of range (m) = manual integration (+) = signals summed

Data Path : Z:\svoasrv\HPCHEM1\BNA_M\Data\BM012825\
 Data File : BM049511.D
 Acq On : 29 Jan 2025 19:34
 Operator : RC/JU
 Sample : Q1189-17
 Misc :
 ALS Vial : 13 Sample Multiplier: 1

Instrument :
 BNA_M
 ClientSampleId :
 A44R8

Quant Time: Jan 30 07:34:10 2025
 Quant Method : Z:\svoasrv\HPCHEM1\BNA_M\Methods\SFAM-EPA-BM012825.MA.M
 Quant Title : SVOA CALIBRATION
 QLast Update : Tue Jan 28 14:45:18 2025
 Response via : Initial Calibration



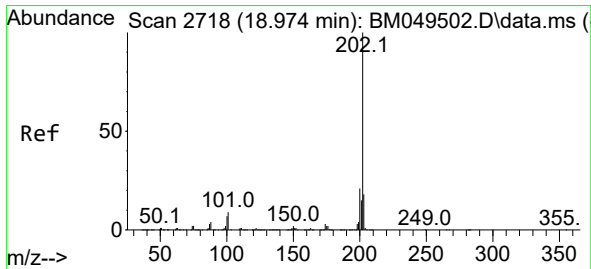
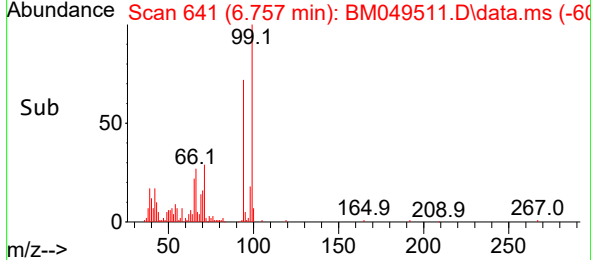
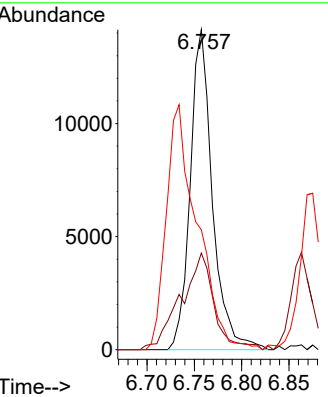
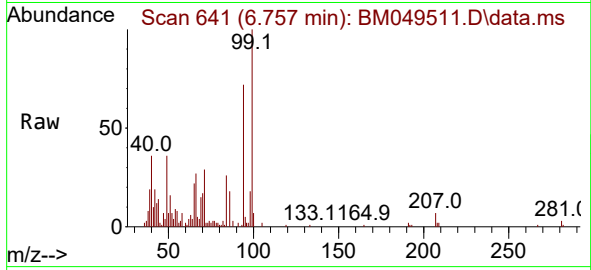


#8
 Phenol
 Concen: 1.249 ng/u1
 RT: 6.757 min Scan# 641
 Delta R.T. 0.024 min
 Lab File: BM049511.D
 Acq: 29 Jan 2025 19:34

Instrument : BNA_M
 ClientSampleId : A44R8

Tgt Ion: 94 Resp: 23082

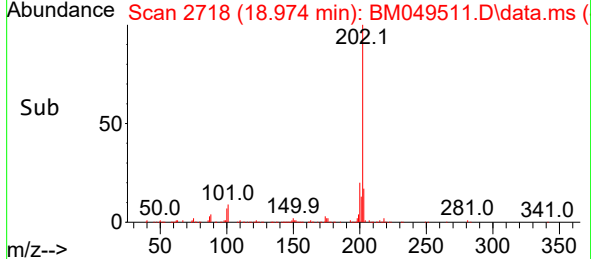
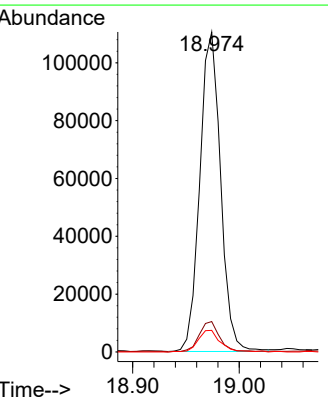
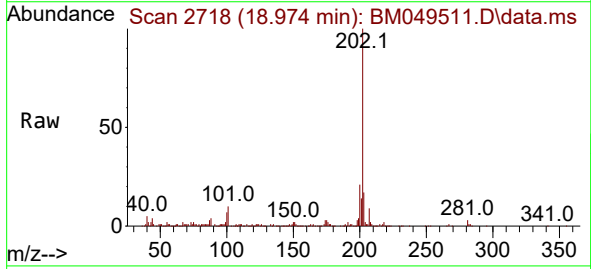
Ion	Ratio	Lower	Upper
94	100		
65	30.2	23.4	35.0
66	37.5	27.8	41.8

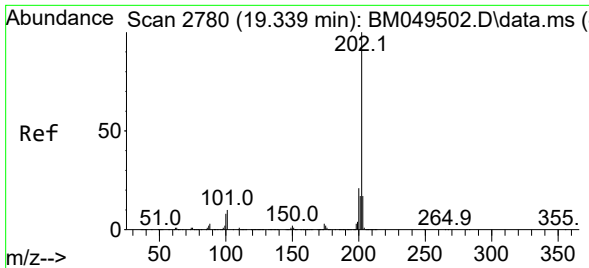


#80
 Fluoranthene
 Concen: 2.115 ng/u1
 RT: 18.974 min Scan# 2718
 Delta R.T. -0.000 min
 Lab File: BM049511.D
 Acq: 29 Jan 2025 19:34

Tgt Ion: 202 Resp: 149373

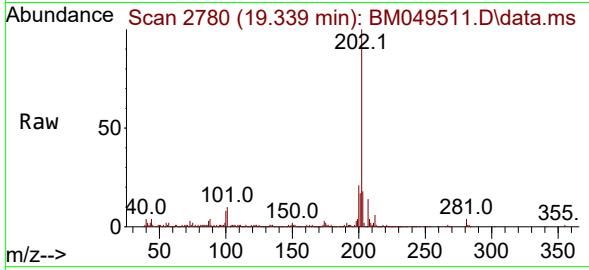
Ion	Ratio	Lower	Upper
202	100		
101	9.5	6.9	10.3
100	6.8	5.1	7.7



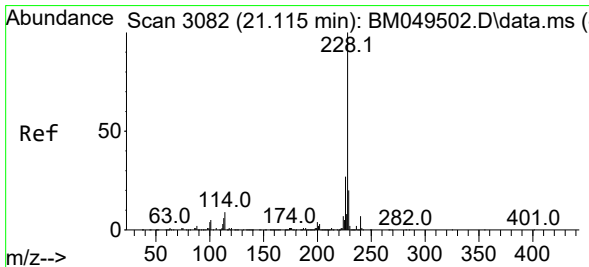
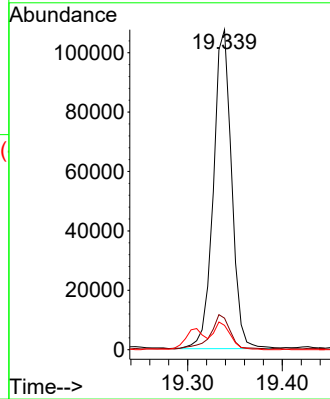
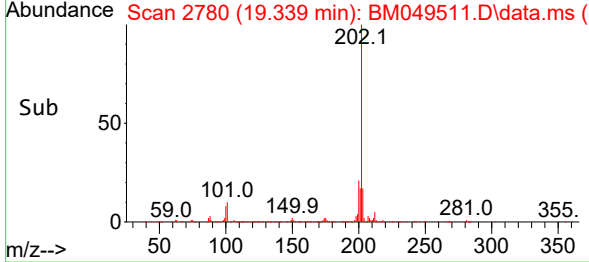


#82
 Pyrene
 Concen: 1.887 ng/ul
 RT: 19.339 min Scan# 21
 Delta R.T. -0.000 min
 Lab File: BM049511.D
 Acq: 29 Jan 2025 19:34

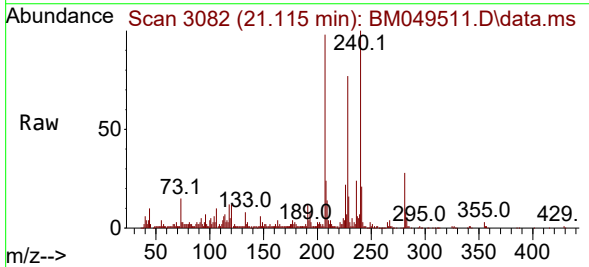
Instrument :
 BNA_M
 ClientSampleId :
 A44R8



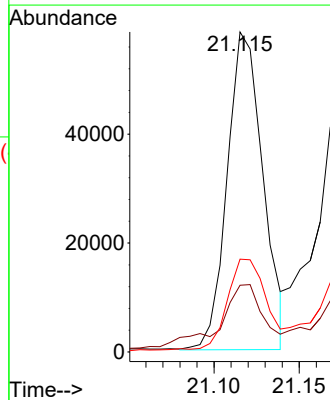
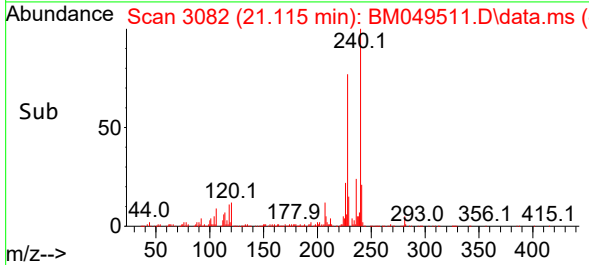
Tgt Ion:202 Resp: 143459
 Ion Ratio Lower Upper
 202 100
 101 9.9 8.3 12.5
 100 7.6 6.6 9.8

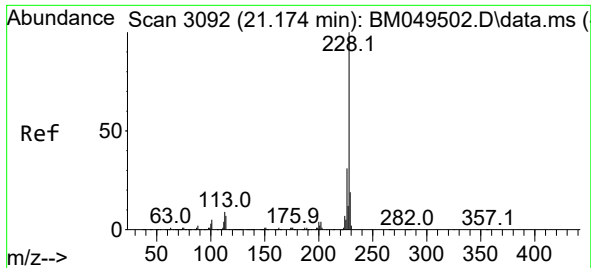


#85
 Benzo(a)anthracene
 Concen: 1.149 ng/ul
 RT: 21.115 min Scan# 3082
 Delta R.T. -0.000 min
 Lab File: BM049511.D
 Acq: 29 Jan 2025 19:34



Tgt Ion:228 Resp: 85371
 Ion Ratio Lower Upper
 228 100
 229 20.9 15.7 23.5
 226 29.0 22.1 33.1



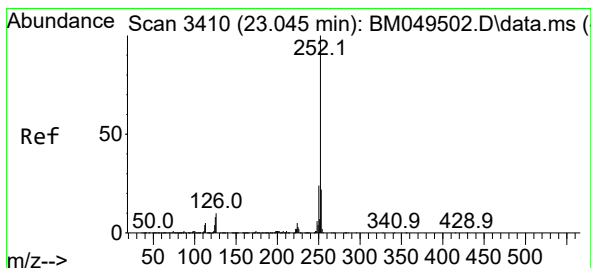
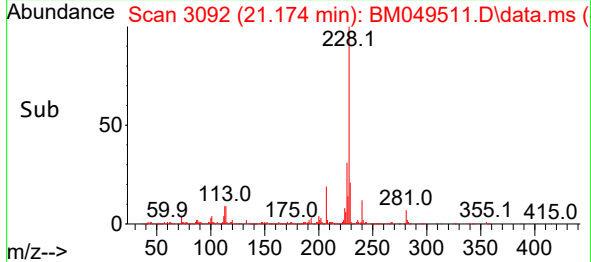
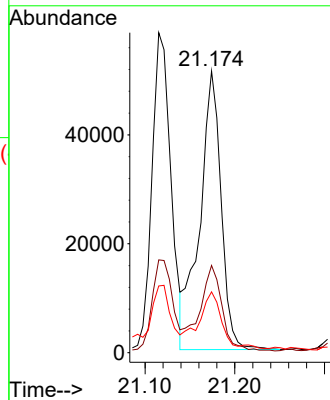
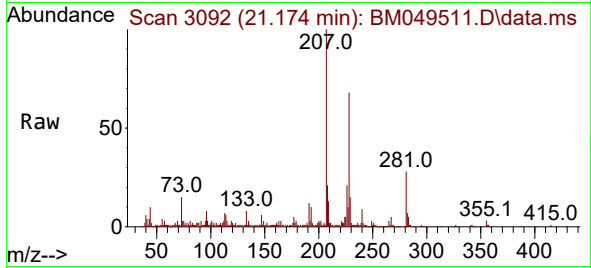


#87
 Chrysene
 Concen: 1.232 ng/ul
 RT: 21.174 min Scan# 3092
 Delta R.T. -0.000 min
 Lab File: BM049511.D
 Acq: 29 Jan 2025 19:34

Instrument :
 BNA_M
 ClientSampleId :
 A44R8

Tgt Ion:228 Resp: 85012

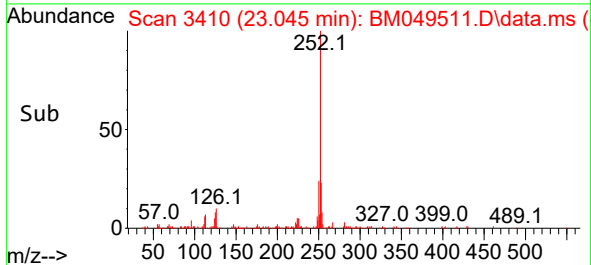
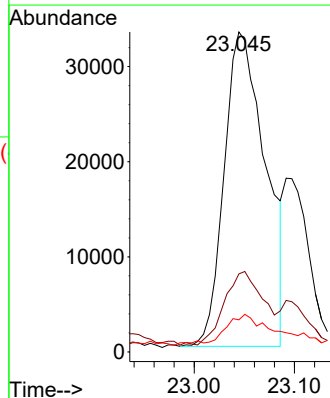
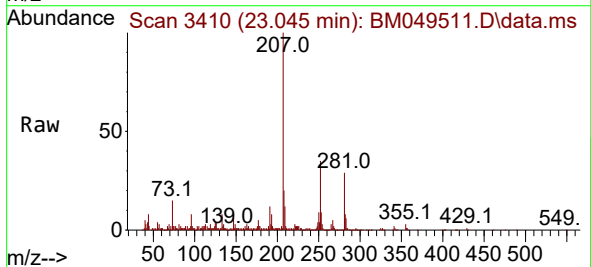
Ion	Ratio	Lower	Upper
228	100		
226	31.0	24.6	37.0
229	21.6	15.9	23.9

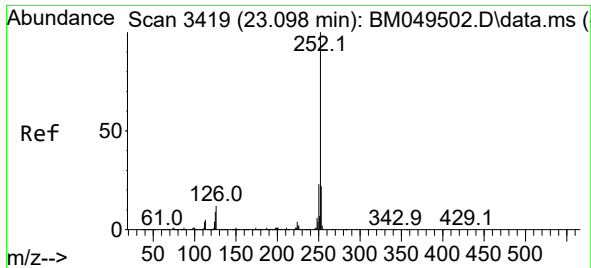


#90
 Benzo(b)fluoranthene
 Concen: 1.263 ng/ul
 RT: 23.045 min Scan# 3410
 Delta R.T. -0.000 min
 Lab File: BM049511.D
 Acq: 29 Jan 2025 19:34

Tgt Ion:252 Resp: 94674

Ion	Ratio	Lower	Upper
252	100		
253	24.4	17.6	26.4
125	10.0	6.3	9.5





#91
 Benzo(k)fluoranthene
 Concen: 1.249 ng/ul
 RT: 23.045 min Scan# 34
 Delta R.T. -0.053 min
 Lab File: BM049511.D
 Acq: 29 Jan 2025 19:34

Instrument :
 BNA_M
 ClientSampleId :
 A44R8

Tgt Ion:252 Resp: 94674
 Ion Ratio Lower Upper
 252 100
 253 24.4 17.5 26.3
 125 10.0 6.5 9.7#

