

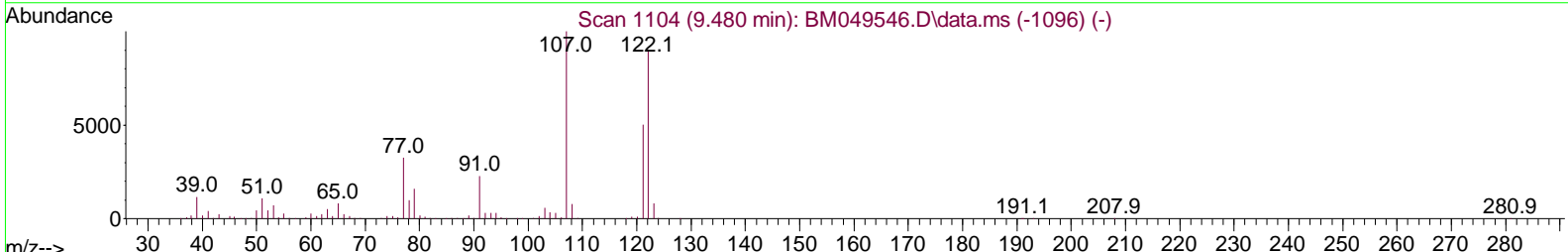
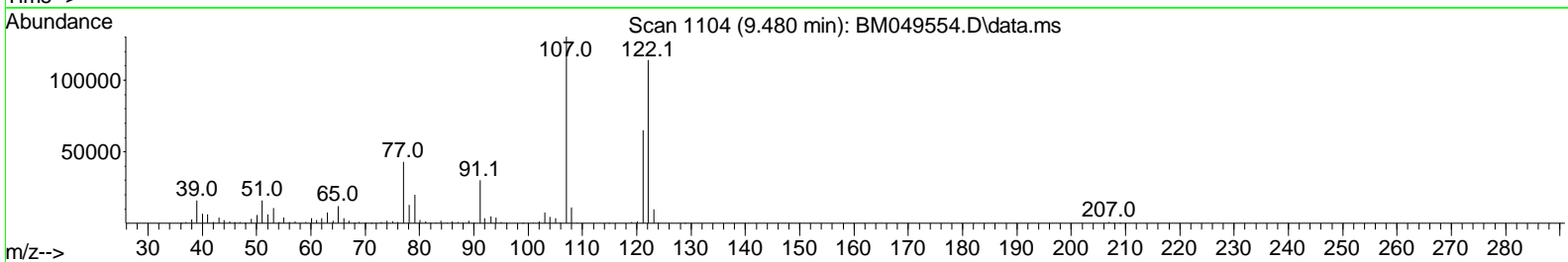
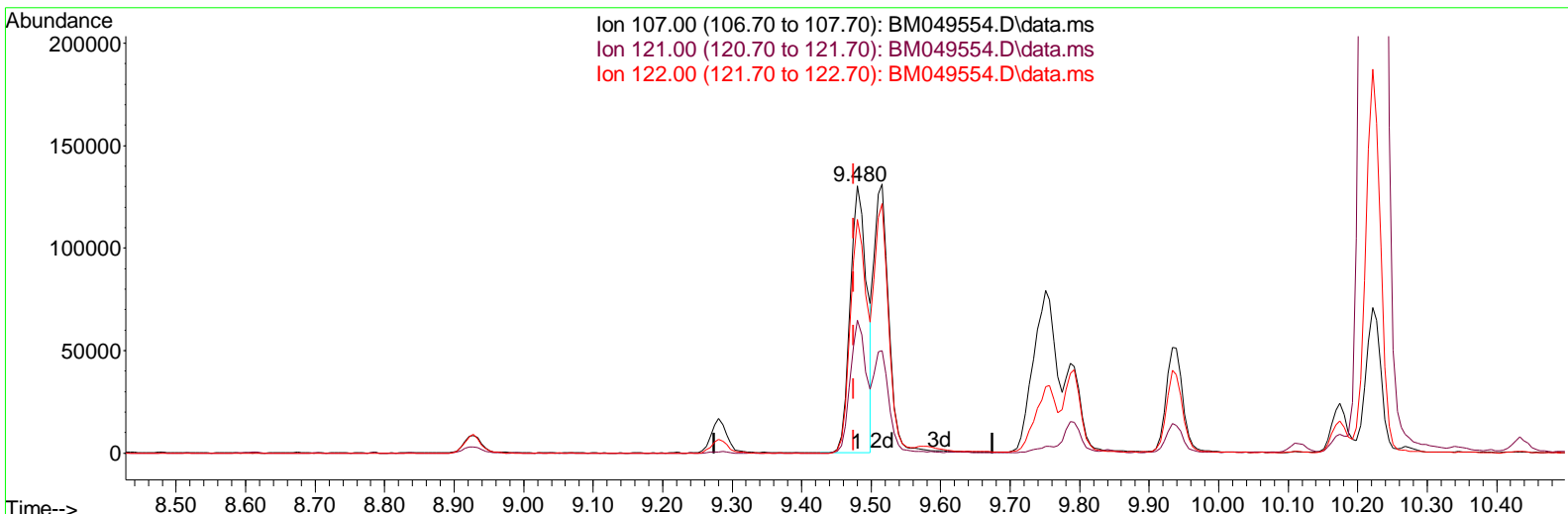
Data Path : Z:\svoasrv\HPCHEM1\BNA_M\Data\BM013025\
 Data File : BM049554.D
 Acq On : 31 Jan 2025 12:16
 Operator : RC/JU
 Sample : Q1184-14DL 100X
 Misc :
 ALS Vial : 35 Sample Multiplier: 1

Instrument :
 BNA_M
ClientSampleId :
 E2965DL

Manual IntegrationsAPPROVED

Quant Time: Feb 03 07:54:07 2025
 Quant Method : Z:\svoasrv\HPCHEM1\BNA_M\Methods\SFAM-EPA-BM012825.MA.M
 Quant Title : SVOA CALIBRATION
 QLast Update : Tue Jan 28 14:45:18 2025
 Response via : Initial Calibration

Reviewed By :Jagrut Upadhyay 02/03/2025
 Supervised By :mohammad ahmed 02/04/2025



TIC: BM049554.D\data.ms

(26) 2,4-Dimethylphenol

9.480min (+ 0.006) 15.50 ng/ul

response 215976

Ion	Exp%	Act%
107.00	100.00	100.00
121.00	49.50	49.77
122.00	85.90	87.32
0.00	0.00	0.00

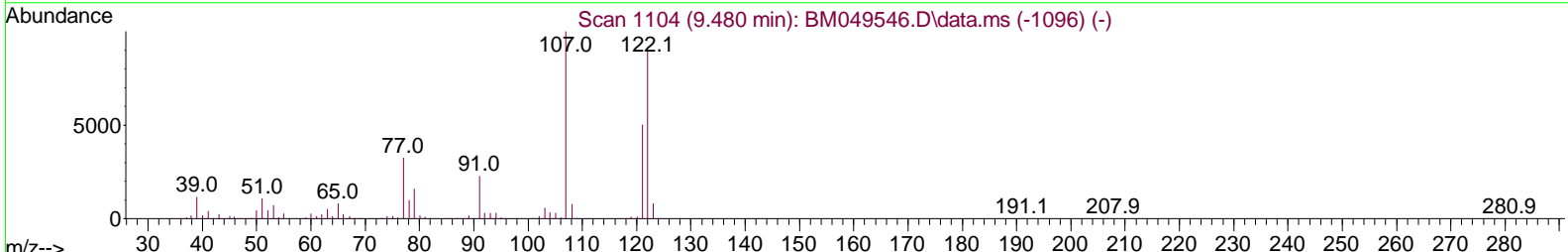
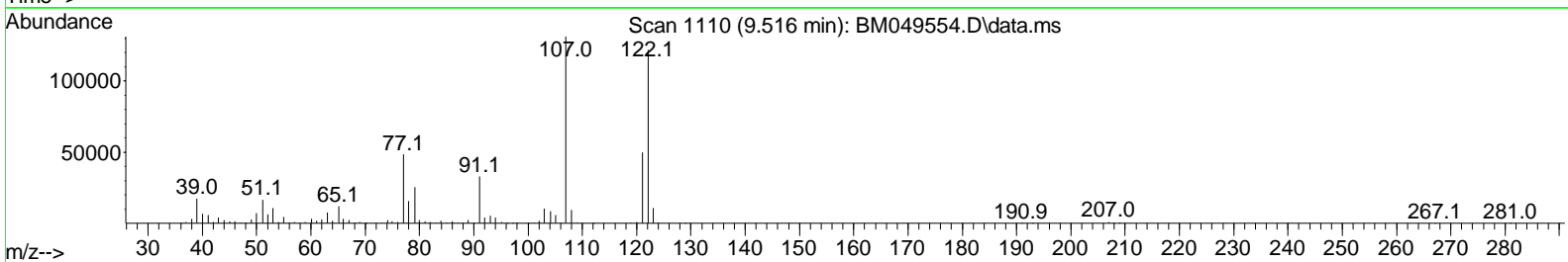
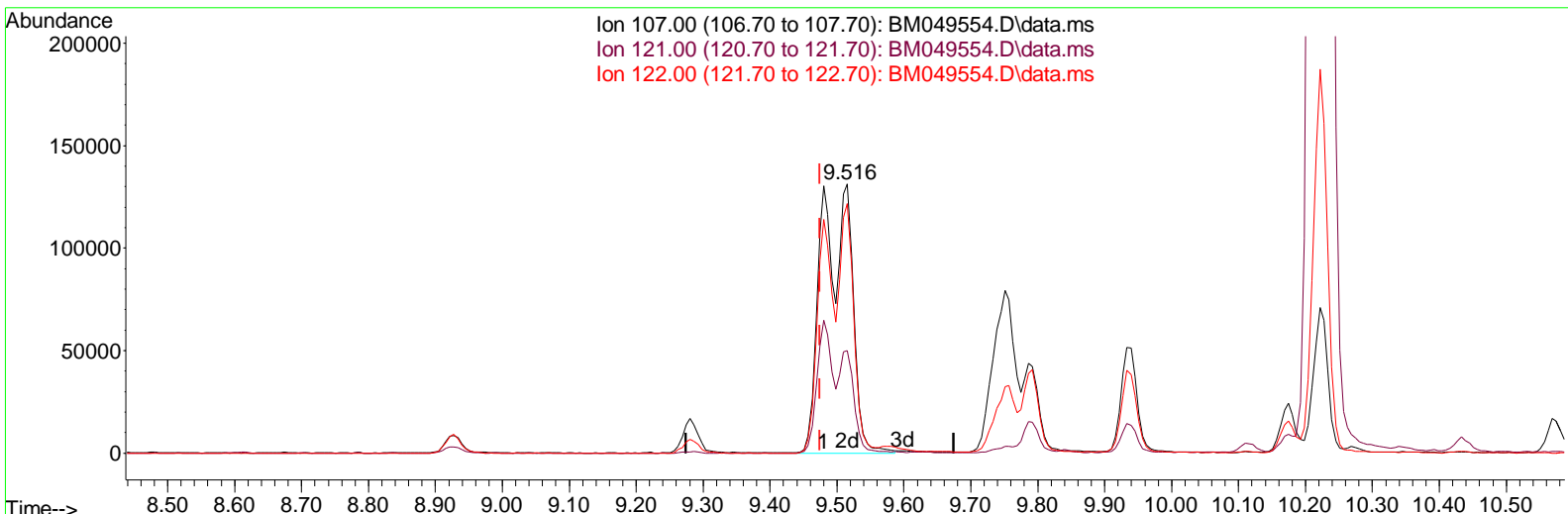
Data Path : Z:\svoasrv\HPCHEM1\BNA_M\Data\BM013025\
 Data File : BM049554.D
 Acq On : 31 Jan 2025 12:16
 Operator : RC/JU
 Sample : Q1184-14DL 100X
 Misc :
 ALS Vial : 35 Sample Multiplier: 1

Instrument :
 BNA_M
ClientSampleId :
 E2965DL

Manual IntegrationsAPPROVED

Quant Time: Feb 03 07:54:07 2025
 Quant Method : Z:\svoasrv\HPCHEM1\BNA_M\Methods\SFAM-EPA-BM012825.MA.M
 Quant Title : SVOA CALIBRATION
 QLast Update : Tue Jan 28 14:45:18 2025
 Response via : Initial Calibration

Reviewed By :Jagrut Upadhyay 02/03/2025
 Supervised By :mohammad ahmed 02/04/2025



TIC: BM049554.D\data.ms

(26) 2,4-Dimethylphenol

9.516min (+ 0.041) 29.50 ng/ul m

response 411004

Ion	Exp%	Act%
107.00	100.00	100.00
121.00	49.50	38.12#
122.00	85.90	92.75
0.00	0.00	0.00

Data Path : Z:\svoasrv\HPCHEM1\BNA_M\Data\BMO13025\
 Data File : BMO49554.D
 Acq On : 31 Jan 2025 12:16
 Operator : RC/JU
 Sample : Q1184-14DL 100X
 Misc :
 ALS Vial : 35 Sample Multi plier: 1

Instrument :
 BNA_M
ClientSampleId :
 E2965DL

Manual IntegrationsAPPROVED

Reviewed By :Jagrut Upadhyay 02/03/2025
 Supervised By :mohammad ahmed 02/04/2025

Quant Time: Feb 03 10:03:35 2025
 Quant Method : Z:\svoasrv\HPCHEM1\BNA_M\Methods\SFAM-EPA-BM012825.MA.M
 Quant Title : SVOA CALI BRATI ON
 QLast Update : Tue Jan 28 14:45:18 2025
 Response via : Ini tial Cal i brati on

Compound	R. T.	QI on	Response	Conc	Units	Dev(Mi n)
Internal Standards						
1) 1,4-Di chl orobenzene-d4	7.510	152	214804	20.000	ng/ul	0.00
20) Naphthal ene-d8	10.269	136	817143	20.000	ng/ul	0.00
38) Acenaphthene-d10	14.151	164	569124	20.000	ng/ul	0.00
64) Phenanthrene-d10	16.909	188	1173641	20.000	ng/ul	0.00
79) Chrysene-d12	21.144	240	1147284	20.000	ng/ul	0.01
88) Peryl ene-d12	23.927	264	1246776	20.000	ng/ul	0.01
System Moni toring Compounds						
3) 1,4-Di oxane-d8	3.116	96	287	0.050	ng/uL	0.00
4) Pyri di ne-d5	0.000	84	Od	0.000	ng/ul	
7) Phenol -d5	6.728	99	1916	0.110	ng/ul	0.02
9) Bi s-(2-Chl oroethyl)eth. . .	6.857	67	4489	0.377	ng/ul	0.00
11) 2-Chl orophenol -d4	7.051	132	4779	0.354	ng/ul	0.00
15) 4-Methyl phenol -d8	8.233	113	3431	0.269	ng/ul	0.00
21) Ni trobenzene-d5	8.663	128	2725	0.436	ng/ul	0.00
24) 2-Ni trophenol -d4	9.375	143	2533	0.371	ng/ul	0.00
28) 2,4-Di chl orophenol -d3	9.916	165	5749	0.413	ng/ul	0.01
31) 4-Chl oroani li ne-d4	10.427	131	3037	0.170	ng/ul	0.00
46) Di methyl phthal ate-d6	13.574	166	14323	0.343	ng/ul	0.00
49) Acenaphthyl ene-d8	13.839	160	18488	0.377	ng/ul	0.00
54) 4-Ni trophenol -d4	0.000	143	Od	0.000	ng/ul	
60) Fl uorene-d10	15.157	176	15047	0.410	ng/ul	0.00
65) 4,6-Di ni tro-2-methyl ph. . .	0.000	200	Od	0.000	ng/ul	
73) Anthracene-d10	17.009	188	29914	0.510	ng/ul	0.00
81) Pyrene-d10	19.315	212	28424	0.424	ng/ul	0.00
92) Benzo(a)pyrene-d12	23.738	264	29069	0.437	ng/ul	0.01
Target Compounds						
8) Phenol	6.751	94	228933	12.513	ng/ul	99
18) 4-Methyl phenol	8.304	108	67729	4.894	ng/ul	92
26) 2,4-Di methyl phenol	9.516	107	411004m	29.499	ng/ul	
30) Naphthal ene	10.316	128	79748	1.833	ng/ul	98

(#) = qual i fier out of range (m) = manual i ntegrati on (+) = si gnal s summed

Data Path : Z:\svoasrv\HPCHEM1\BNA_M\Data\BM013025\
 Data File : BM049554.D
 Acq On : 31 Jan 2025 12:16
 Operator : RC/JU
 Sample : Q1184-14DL 100X
 Misc :
 ALS Vial : 35 Sample Multiplier: 1

Instrument :
 BNA_M
ClientSampleId :
 E2965DL

Manual Integrations APPROVED

Reviewed By : Jagrut Upadhyay 02/03/2025
 Supervised By : mohammad ahmed 02/04/2025

Quant Time: Feb 03 10:03:35 2025
 Quant Method : Z:\svoasrv\HPCHEM1\BNA_M\Methods\SFAM-EPA-BM012825.MA.M
 Quant Title : SVOA CALIBRATION
 QLast Update : Tue Jan 28 14:45:18 2025
 Response via : Initial Calibration

