

Data Path : Z:\HPCHEM1\BNA M\DATA\BM013118\  
 Data File : BM014039.D  
 Acq On : 31 Jan 2018 18:06  
 Operator : SJ/JU  
 Sample : PB106181BL  
 Misc :  
 ALS Vial : 6 Sample Multiplier: 1

Instrument :  
 BNA\_M  
 ClientSampleId :  
 SBLK81

Quant Time: Feb 01 01:03:21 2018  
 Quant Method : Z:\HPCHEM1\BNA M\METHODS\SOM-EPA-BM013118.M  
 Quant Title : SVOA CALIBRATION  
 QLast Update : Thu Feb 01 01:00:18 2018  
 Response via : Initial Calibration

Internal Standards	R.T.	QIon	Response	Conc	Units	Dev(Min)
1) 1,4-Dichlorobenzene-d4	7.56	152	85099	20.00	ng/ul	0.00
18) Naphthalene-d8	10.33	136	363408	20.00	ng/ul	0.00
35) Acenaphthene-d10	14.22	164	234677	20.00	ng/ul	0.00
61) Phenanthrene-d10	16.97	188	564565	20.00	ng/ul	0.00
75) Chrysene-d12	21.18	240	596439	20.00	ng/ul	0.00
83) Perylene-d12	23.36	264	577676	20.00	ng/ul	0.00

## System Monitoring Compounds

3) 1,4-Dioxane-d8	3.12	96	10196	5.50	ng/uL	0.00
5) Phenol-d5	6.75	99	187352	29.29	ng/ul	0.00
7) Bis-(2-Chloroethyl)ether-d	6.91	67	123023	31.88	ng/ul	0.00
9) 2-Chlorophenol-d4	7.10	132	163773	32.33	ng/ul	0.00
13) 4-Methylphenol-d8	8.27	113	170260	31.79	ng/ul	0.00
19) Nitrobenzene-d5	8.72	128	84532	32.22	ng/ul	0.00
22) 2-Nitrophenol-d4	9.43	143	94772	32.65	ng/ul	0.00
26) 2,4-Dichlorophenol-d3	9.97	165	169965	27.83	ng/ul	0.00
29) 4-Chloroaniline-d4	10.49	131	208034	39.29	ng/ul	0.00
43) Dimethylphthalate-d6	13.64	166	731947	37.58	ng/ul	0.00
46) Acenaphthylene-d8	13.91	160	834798	35.33	ng/ul	0.00
51) 4-Nitrophenol-d4	14.46	143	60005	22.36	ng/ul	0.00
57) Fluorene-d10	15.22	176	623220	35.75	ng/ul	0.00
62) 4,6-Dinitro-2-methylphenol	15.37	200	93930	27.09	ng/ul	0.00
70) Anthracene-d10	17.07	188	972317	35.47	ng/ul	0.00
76) Pyrene-d10	19.38	212	1120947	39.03	ng/ul	0.00
87) Benzo(a)pyrene-d12	23.23	264	1014843	35.79	ng/ul	0.00

## Target Compounds

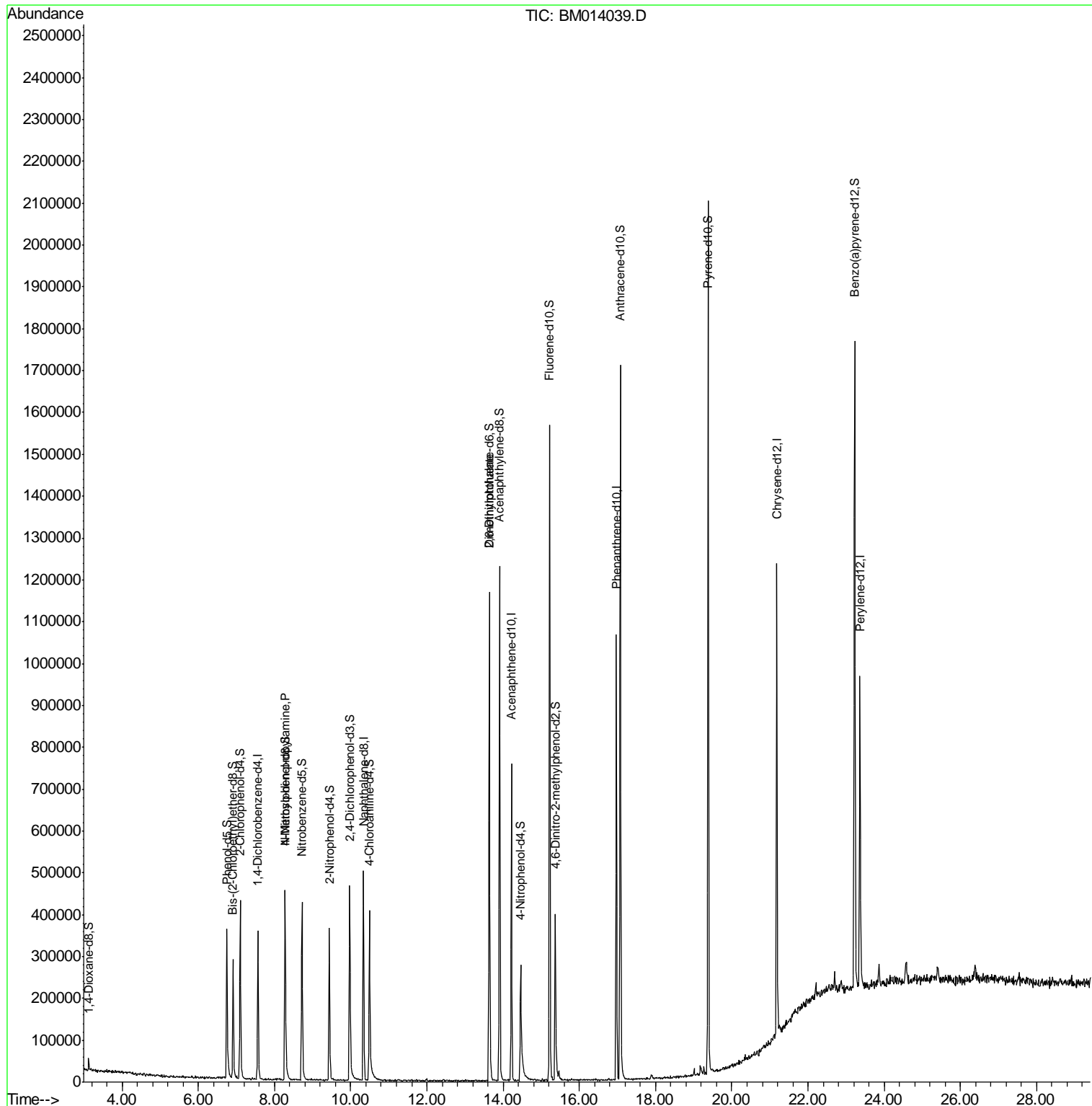
Target Compounds	R.T.	QIon	Response	Conc	Units	Ovalue
15) N-Nitroso-di-n-propylamine	8.28	70	4914	1.063	ng/ul#	1
45) 2,6-Dinitrotoluene	13.64	165	3936	1.079	ng/ul#	19

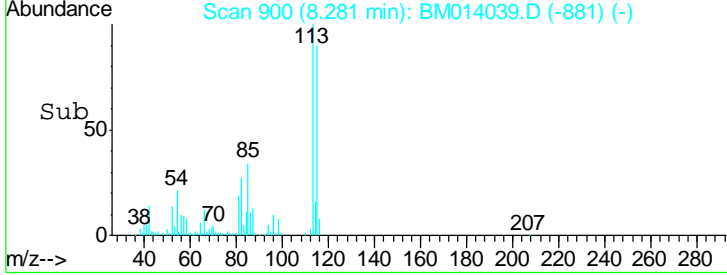
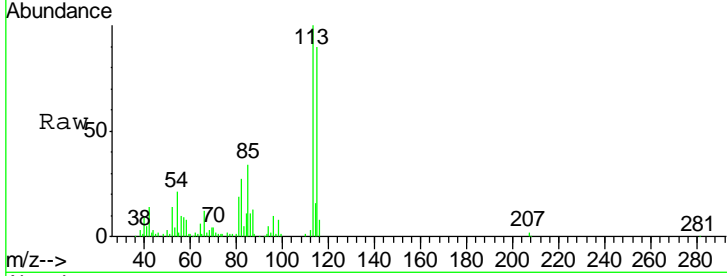
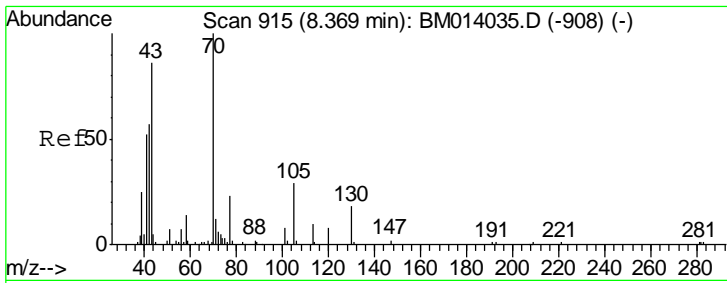
(#) = qualifier out of range (m) = manual integration (+) = signals summed

Data Path : Z:\HPCHEM1\BNA M\DATA\BM013118\  
 Data File : BM014039.D  
 Acq On : 31 Jan 2018 18:06  
 Operator : SJ/JU  
 Sample : PB106181BL  
 Misc :  
 ALS Vial : 6 Sample Multiplier: 1

Instrument :  
 BNA\_M  
 ClientSampled :  
 SBLK81

Quant Time: Feb 01 01:03:21 2018  
 Quant Method : Z:\HPCHEM1\BNA M\METHODS\SOM-EPA-BM013118.M  
 Quant Title : SVOA CALIBRATION  
 QLast Update : Thu Feb 01 01:00:18 2018  
 Response via : Initial Calibration

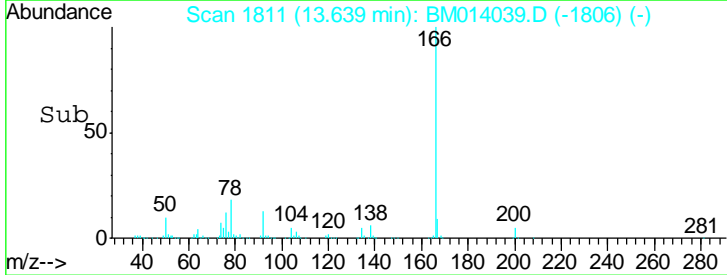
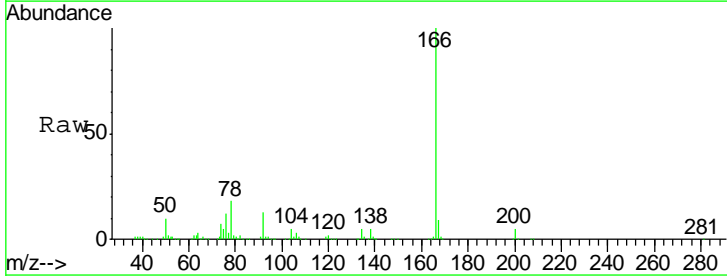
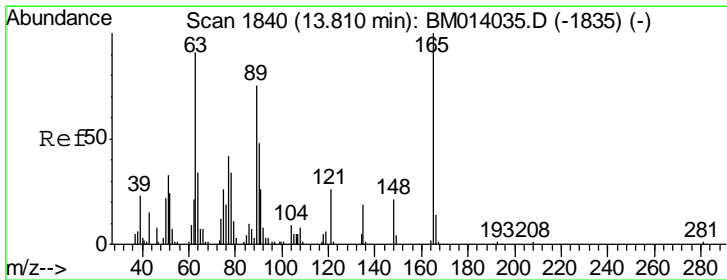
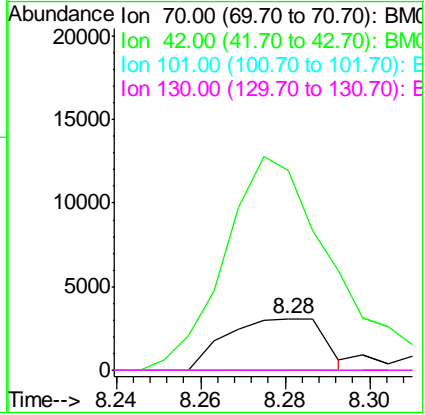




#15  
 N-Nitroso-di-n-propylamine  
 Concen: 1.063 ng/ul  
 RT: 8.28 min Scan# 900  
 Delta R.T. -0.09 min  
 Lab File: BM014039.D  
 Acq: 31 Jan 2018 18:06

**Instrument :**  
 BNA\_M  
**ClientSampled :**  
 SBLK81

Tgt Ion	Resp	Lower	Upper
70	4914		
70	100		
42	387.0	76.0	114.0#
101	0.0	6.7	10.1#
130	0.0	14.6	22.0#



#45  
 2,6-Dinitrotoluene  
 Concen: 1.079 ng/ul  
 RT: 13.64 min Scan# 1811  
 Delta R.T. -0.17 min  
 Lab File: BM014039.D  
 Acq: 31 Jan 2018 18:06

Tgt Ion	Resp	Lower	Upper
165	3936		
165	100		
89	0.0	52.6	79.0#
121	51.4	14.6	22.0#

