

Data Path : Z:\HPCHEM1\BNA M\DATA\BM013118\
 Data File : BM014042.D
 Acq On : 31 Jan 2018 19:54
 Operator : SJ/JU
 Sample : J1316-01
 Misc :
 ALS Vial : 9 Sample Multiplier: 1

Instrument :
 BNA_M
ClientSampled :
 F6C84

Manual Integrations
APPROVED
 Sohil
 2/1/2018 6:04:40 PM

Quant Time: Feb 01 01:38:43 2018
 Quant Method : Z:\HPCHEM1\BNA M\METHODS\SOM-EPA-BM013118.M
 Quant Title : SVOA CALIBRATION
 QLast Update : Thu Feb 01 01:00:18 2018
 Response via : Initial Calibration

Internal Standards	R.T.	QIon	Response	Conc	Units	Dev(Min)
1) 1,4-Dichlorobenzene-d4	7.56	152	89906	20.00	ng/ul	0.00
18) Naphthalene-d8	10.33	136	361325	20.00	ng/ul	0.00
35) Acenaphthene-d10	14.22	164	229602	20.00	ng/ul	0.00
61) Phenanthrene-d10	16.97	188	570601	20.00	ng/ul	0.00
75) Chrysene-d12	21.18	240	670799	20.00	ng/ul	0.00
83) Perylene-d12	23.36	264	675459	20.00	ng/ul	0.00

System Monitoring Compounds

3) 1,4-Dioxane-d8	3.12	96	11591m	5.92	ng/uL	0.00
5) Phenol-d5	6.75	99	233885	34.61	ng/ul	0.00
7) Bis-(2-Chloroethyl)ether-d	6.91	67	153870	37.75	ng/ul	0.00
9) 2-Chlorophenol-d4	7.10	132	198781	37.15	ng/ul	0.00
13) 4-Methylphenol-d8	8.27	113	206085	36.42	ng/ul	0.00
19) Nitrobenzene-d5	8.72	128	100457	38.51	ng/ul	0.00
22) 2-Nitrophenol-d4	9.44	143	116924	40.51	ng/ul	0.00
26) 2,4-Dichlorophenol-d3	9.97	165	206820	34.06	ng/ul	0.00
29) 4-Chloroaniline-d4	10.49	131	244077	46.37	ng/ul	0.00
43) Dimethylphthalate-d6	13.64	166	758053	39.78	ng/ul	0.00
46) Acenaphthylene-d8	13.90	160	914627	39.56	ng/ul	0.00
51) 4-Nitrophenol-d4	14.46	143	80403	30.62	ng/ul	0.00
57) Fluorene-d10	15.22	176	667400	39.13	ng/ul	0.00
62) 4,6-Dinitro-2-methylphenol	15.36	200	100890	28.79	ng/ul	0.00
70) Anthracene-d10	17.07	188	1066339m	38.49	ng/ul	0.00
76) Pyrene-d10	19.38	212	1271722	39.37	ng/ul	0.00
87) Benzo(a)pyrene-d12	23.23	264	1277075	38.52	ng/ul	0.00

Target Compounds

				Ovalue
6) Phenol	6.78	94	29073m	4.301 ng/ul
44) Dimethylphthalate	13.69	163	154525	8.412 ng/ul 99

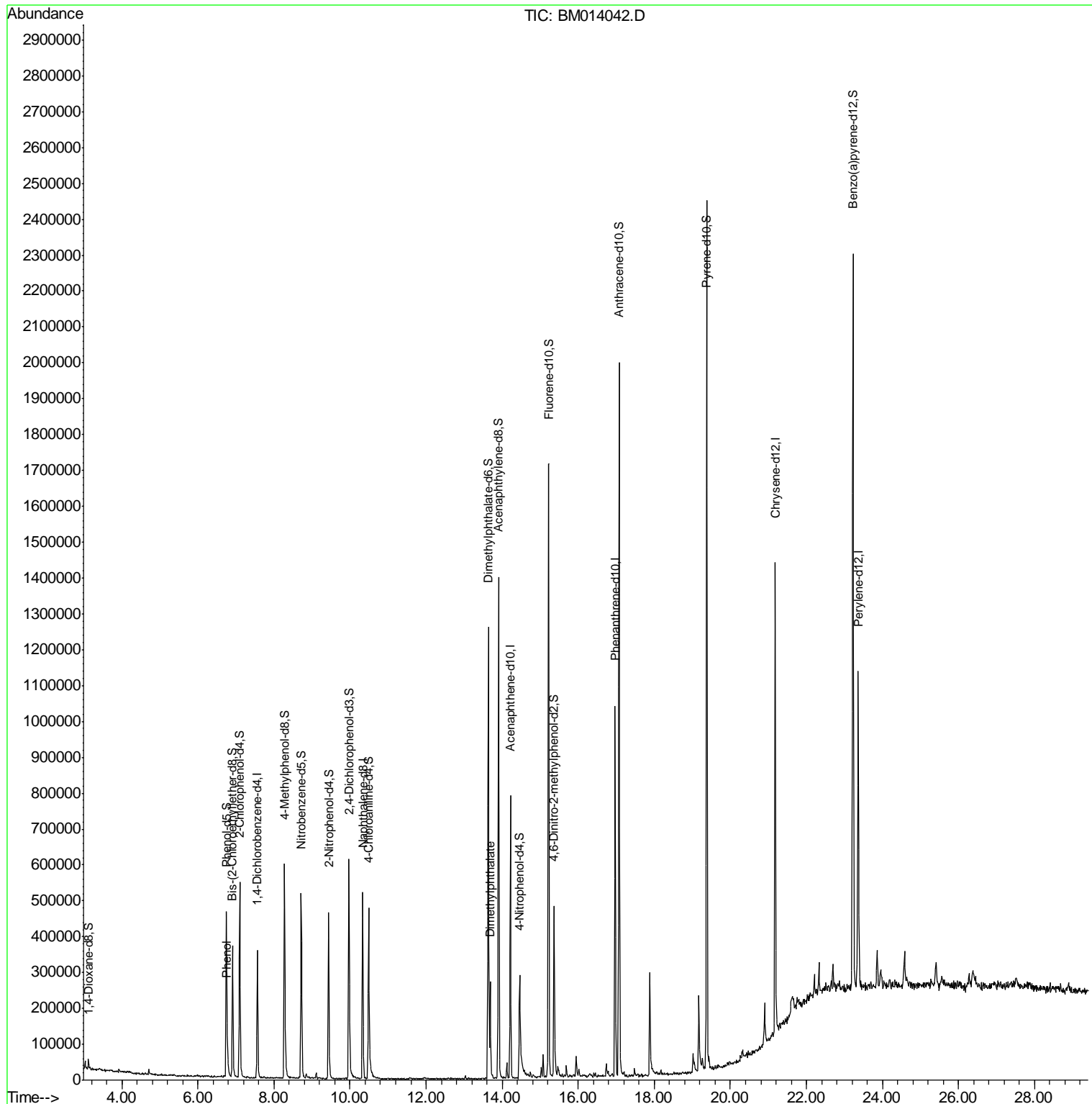
(#) = qualifier out of range (m) = manual integration (+) = signals summed

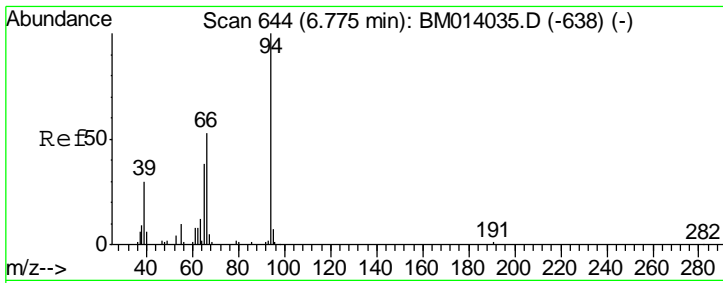
Data Path : Z:\HPCHEM1\BNA M\DATA\BM013118\
 Data File : BM014042.D
 Acq On : 31 Jan 2018 19:54
 Operator : SJ/JU
 Sample : J1316-01
 Misc :
 ALS Vial : 9 Sample Multiplier: 1

Instrument :
 BNA_M
 Client Sampled :
 F6C84

Manual Integrations
APPROVED
 Sohil
 2/1/2018 6:04:40 PM

Quant Time: Feb 01 01:38:43 2018
 Quant Method : Z:\HPCHEM1\BNA M\METHODS\SOM-EPA-BM013118.M
 Quant Title : SVOA CALIBRATION
 QLast Update : Thu Feb 01 01:00:18 2018
 Response via : Initial Calibration





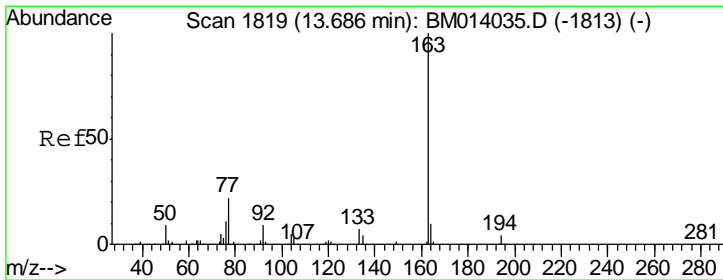
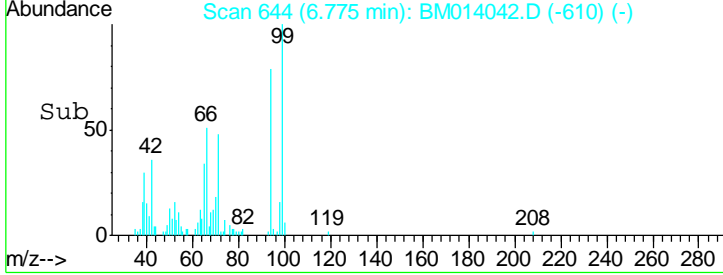
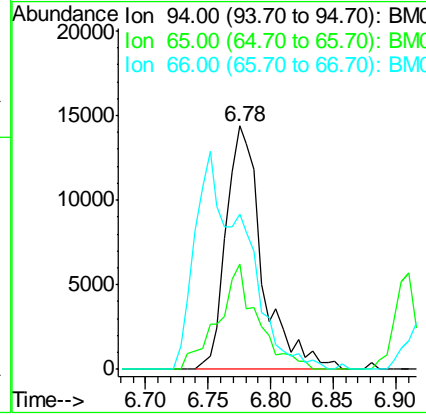
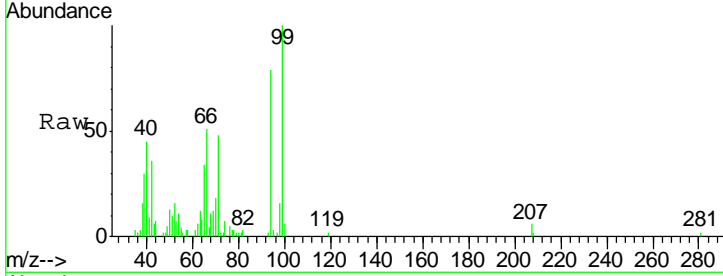
#6
 Phenol
 Concen: 4.301 ng/ul m
 RT: 6.78 min Scan# 644
 Delta R.T. 0.00 min
 Lab File: BM014042.D
 Acq: 31 Jan 2018 19:54

Instrument :
 BNA_M
 ClientSampled :
 F6C84

Tgt Ion	Resp	Lower	Upper
94	100		
65	43.2	28.2	42.4#
66	63.8	47.2	70.8

Manual Integrations
 APPROVED

Sohil
 2/1/2018 6:04:40 PM



#44
 Dimethylphthalate
 Concen: 8.412 ng/ul
 RT: 13.69 min Scan# 1819
 Delta R.T. 0.00 min
 Lab File: BM014042.D
 Acq: 31 Jan 2018 19:54

Tgt Ion	Resp	Lower	Upper
163	100		
194	4.7	3.5	5.3
164	10.1	8.2	12.4

