

Data Path : Z:\HPCHEM1\BNA M\DATA\BM013118\  
 Data File : BM014046.D  
 Acq On : 31 Jan 2018 22:17  
 Operator : SJ/JU  
 Sample : J1314-12  
 Misc :  
 ALS Vial : 13 Sample Multiplier: 1

Instrument :  
 BNA\_M  
 ClientSampleId :  
 F6C49

Manual Integrations  
 APPROVED

Sohil  
 2/1/2018 6:04:52 PM

Quant Time: Feb 01 01:57:29 2018  
 Quant Method : Z:\HPCHEM1\BNA M\METHODS\SOM-EPA-BM013118.M  
 Quant Title : SVOA CALIBRATION  
 QLast Update : Thu Feb 01 01:00:18 2018  
 Response via : Initial Calibration

Internal Standards	R.T.	QIon	Response	Conc	Units	Dev(Min)
1) 1,4-Dichlorobenzene-d4	7.56	152	92943	20.00	ng/ul	0.00
18) Naphthalene-d8	10.33	136	395026	20.00	ng/ul	0.00
35) Acenaphthene-d10	14.22	164	250298	20.00	ng/ul	0.00
61) Phenanthrene-d10	16.97	188	607245	20.00	ng/ul	0.00
75) Chrysene-d12	21.18	240	679521	20.00	ng/ul	0.00
83) Perylene-d12	23.36	264	647836	20.00	ng/ul	0.00

## System Monitoring Compounds

3) 1,4-Dioxane-d8	3.12	96	10504	5.19	ng/uL	0.00
5) Phenol-d5	6.75	99	184260	26.38	ng/ul	0.00
7) Bis-(2-Chloroethyl)ether-d	6.91	67	125018	29.67	ng/ul	0.00
9) 2-Chlorophenol-d4	7.10	132	164772	29.79	ng/ul	0.00
13) 4-Methylphenol-d8	8.28	113	172548	29.50	ng/ul	0.00
19) Nitrobenzene-d5	8.72	128	86791	30.44	ng/ul	0.00
22) 2-Nitrophenol-d4	9.43	143	97229	30.81	ng/ul	0.00
26) 2,4-Dichlorophenol-d3	9.97	165	177833	26.79	ng/ul	0.00
29) 4-Chloroaniline-d4	10.49	131	203342	35.33	ng/ul	0.00
43) Dimethylphthalate-d6	13.63	166	688280	33.13	ng/ul	0.00
46) Acenaphthylene-d8	13.90	160	825715	32.76	ng/ul	0.00
51) 4-Nitrophenol-d4	14.46	143	65882	23.01	ng/ul	0.00
57) Fluorene-d10	15.22	176	608467	32.73	ng/ul	0.00
62) 4,6-Dinitro-2-methylphenol	15.36	200	91000	24.40	ng/ul	0.00
70) Anthracene-d10	17.07	188	937019m	31.78	ng/ul	0.00
76) Pyrene-d10	19.37	212	1078174	32.95	ng/ul	0.00
87) Benzo(a)pyrene-d12	23.22	264	1033569	32.51	ng/ul	0.00

## Target Compounds

Target Compounds	R.T.	QIon	Response	Conc	Units	Ovalue
44) Dimethylphthalate	13.69	163	122110	6.098	ng/ul	97

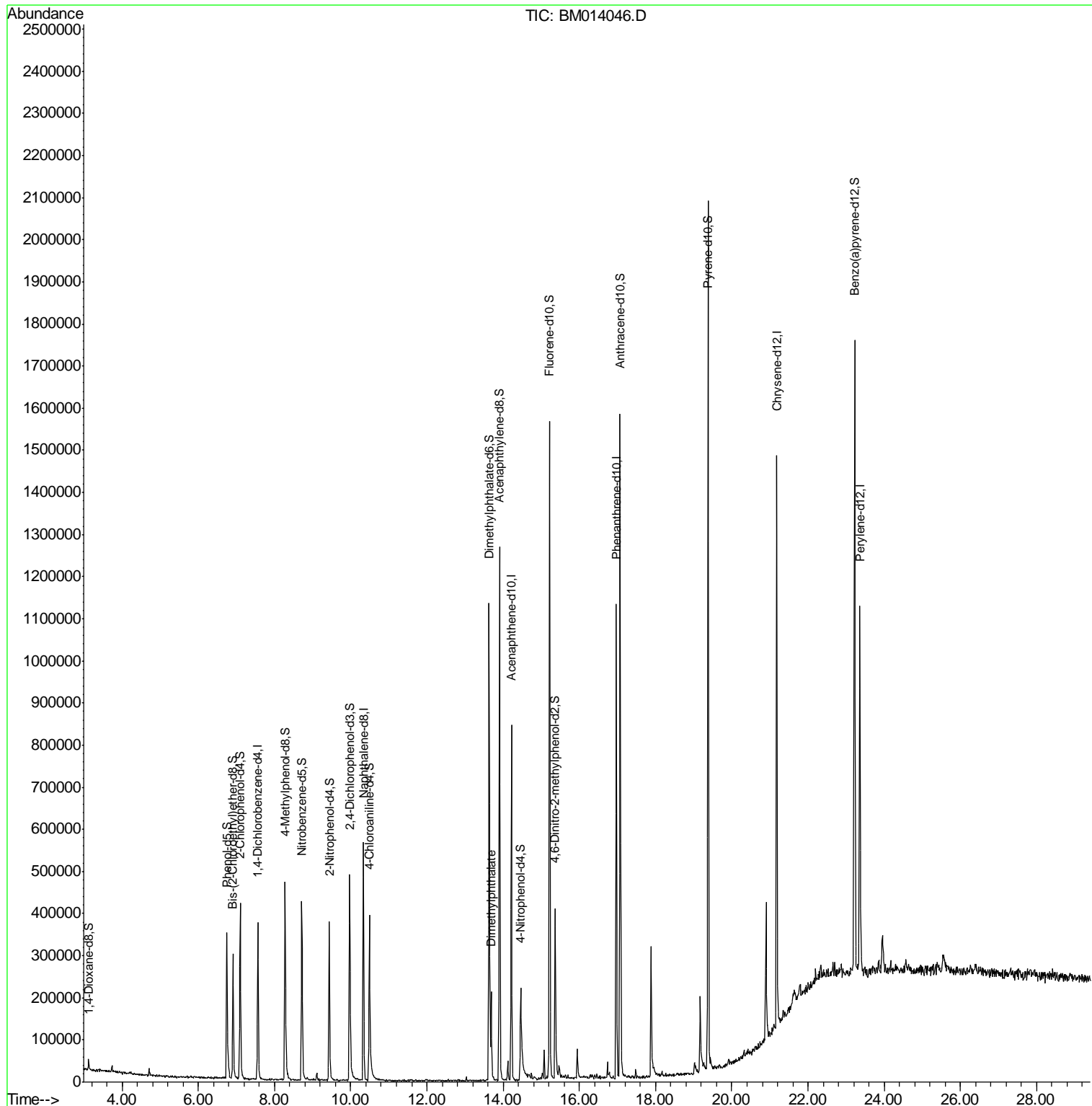
(#) = qualifier out of range (m) = manual integration (+) = signals summed

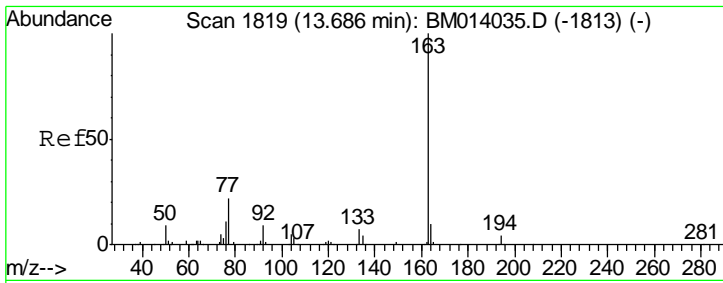
Data Path : Z:\HPCHEM1\BNA M\DATA\BM013118\  
 Data File : BM014046.D  
 Acq On : 31 Jan 2018 22:17  
 Operator : SJ/JU  
 Sample : J1314-12  
 Misc :  
 ALS Vial : 13 Sample Multiplier: 1

Instrument :  
 BNA\_M  
 ClientSampleId :  
 F6C49

Manual Integrations  
**APPROVED**  
 Sohil  
 2/1/2018 6:04:52 PM

Quant Time: Feb 01 01:57:29 2018  
 Quant Method : Z:\HPCHEM1\BNA M\METHODS\SOM-EPA-BM013118.M  
 Quant Title : SVOA CALIBRATION  
 QLast Update : Thu Feb 01 01:00:18 2018  
 Response via : Initial Calibration





#44  
 Dimethylphthalate  
 Concen: 6.098 ng/ul  
 RT: 13.69 min Scan# 1819  
 Delta R.T. 0.00 min  
 Lab File: BM014046.D  
 Acq: 31 Jan 2018 22:17

**Instrument :**  
 BNA\_M  
**ClientSampled :**  
 F6C49

Tot Ion	Ratio	Lower	Upper
163	100		
194	4.5	3.5	5.3
164	9.0	8.2	12.4

**Manual Integrations**  
**APPROVED**  
 Sohil  
 2/1/2018 6:04:52 PM

