

Data Path : Z:\HPCHEM1\BNA M\DATA\BM013118\
 Data File : BM014048.D
 Acq On : 31 Jan 2018 23:29
 Operator : SJ/JU
 Sample : J1315-05
 Misc :
 ALS Vial : 15 Sample Multiplier: 1

Instrument :
 BNA_M
 ClientSampled :
 F6C62

Manual Integrations
 APPROVED

Sohil
 2/1/2018 6:04:58 PM

Quant Time: Feb 01 02:05:00 2018
 Quant Method : Z:\HPCHEM1\BNA M\METHODS\SOM-EPA-BM013118.M
 Quant Title : SVOA CALIBRATION
 QLast Update : Thu Feb 01 01:00:18 2018
 Response via : Initial Calibration

Internal Standards	R.T.	QIon	Response	Conc	Units	Dev(Min)
1) 1,4-Dichlorobenzene-d4	7.56	152	100619	20.00	ng/ul	0.00
18) Naphthalene-d8	10.33	136	418461	20.00	ng/ul	0.00
35) Acenaphthene-d10	14.22	164	273421	20.00	ng/ul	0.00
61) Phenanthrene-d10	16.97	188	654075	20.00	ng/ul	0.00
75) Chrysene-d12	21.18	240	720589	20.00	ng/ul	0.00
83) Perylene-d12	23.36	264	705357	20.00	ng/ul	0.00

System Monitoring Compounds

3) 1,4-Dioxane-d8	3.12	96	10680m	4.87	ng/uL	0.00
5) Phenol-d5	6.75	99	187971	24.86	ng/ul	0.00
7) Bis-(2-Chloroethyl)ether-d	6.91	67	117211	25.69	ng/ul	0.00
9) 2-Chlorophenol-d4	7.10	132	163031	27.22	ng/ul	0.00
13) 4-Methylphenol-d8	8.27	113	170042	26.85	ng/ul	0.00
19) Nitrobenzene-d5	8.72	128	86013	28.47	ng/ul	0.00
22) 2-Nitrophenol-d4	9.43	143	95664	28.62	ng/ul	0.00
26) 2,4-Dichlorophenol-d3	9.97	165	173751	24.71	ng/ul	0.00
29) 4-Chloroaniline-d4	10.49	131	207538	34.04	ng/ul	0.00
43) Dimethylphthalate-d6	13.63	166	657353	28.97	ng/ul	0.00
46) Acenaphthylene-d8	13.90	160	806079	29.28	ng/ul	0.00
51) 4-Nitrophenol-d4	14.46	143	71057m	22.72	ng/ul	0.00
57) Fluorene-d10	15.22	176	582385	28.68	ng/ul	0.00
62) 4,6-Dinitro-2-methylphenol	15.36	200	86362	21.50	ng/ul	0.00
70) Anthracene-d10	17.07	188	918029m	28.91	ng/ul	0.00
76) Pyrene-d10	19.37	212	1032201	29.75	ng/ul	0.00
87) Benzo(a)pyrene-d12	23.22	264	1009981	29.17	ng/ul	0.00

Target Compounds

Target Compounds	R.T.	QIon	Response	Conc	Units	Ovalue
44) Dimethylphthalate	13.69	163	124387	5.686	ng/ul	98

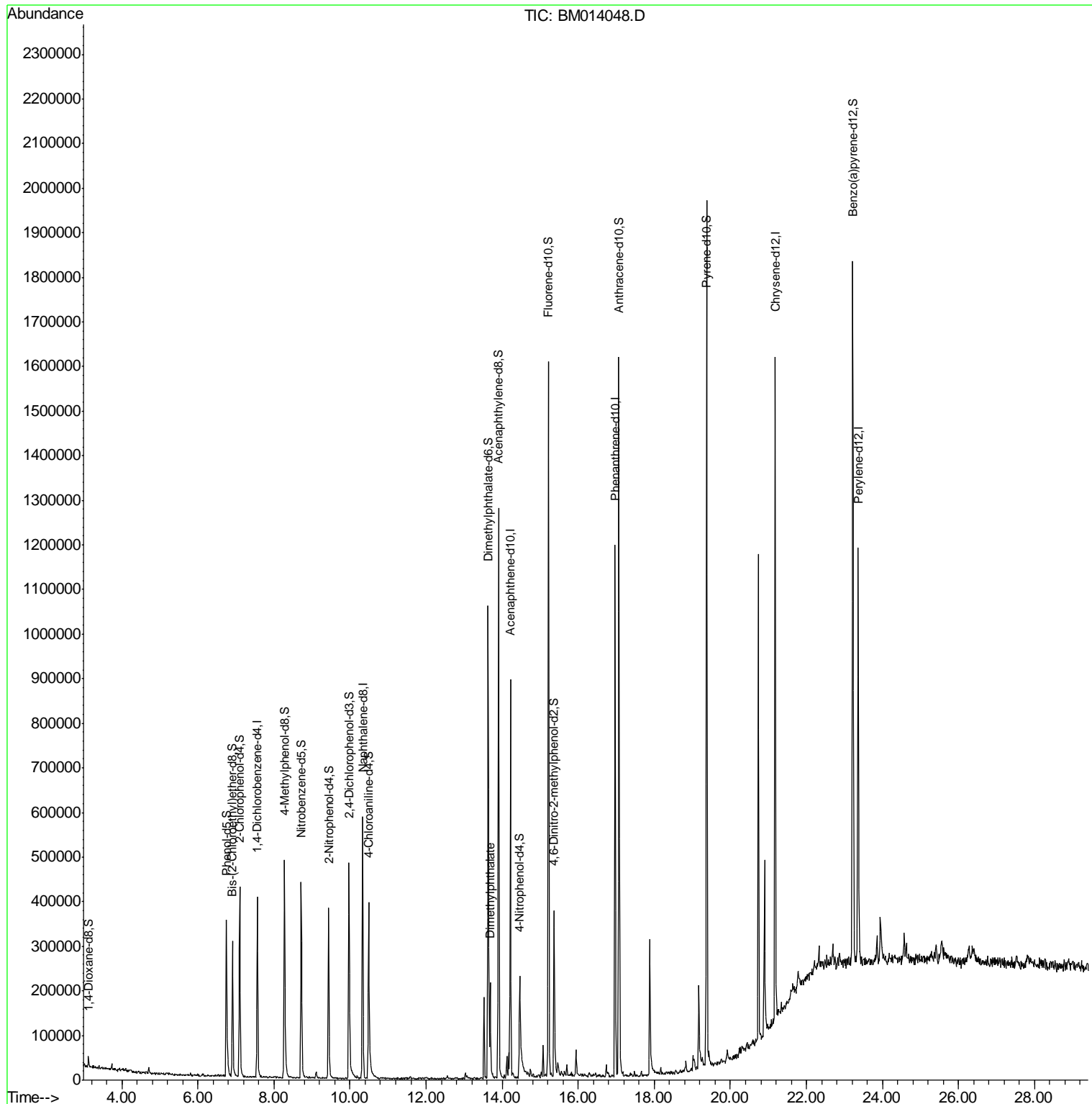
(#) = qualifier out of range (m) = manual integration (+) = signals summed

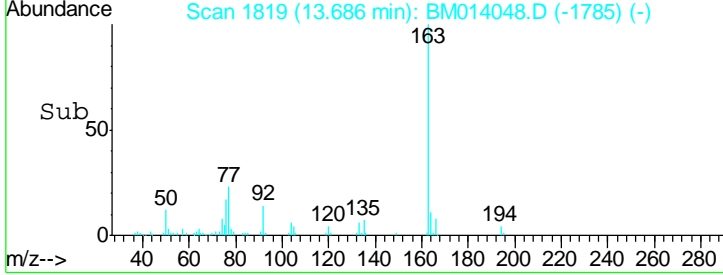
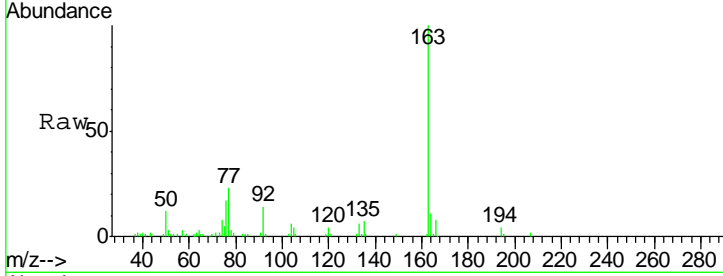
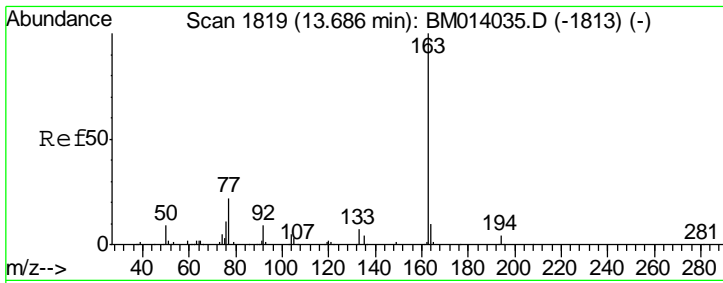
Data Path : Z:\HPCHEM1\BNA M\DATA\BM013118\
 Data File : BM014048.D
 Acq On : 31 Jan 2018 23:29
 Operator : SJ/JU
 Sample : J1315-05
 Misc :
 ALS Vial : 15 Sample Multiplier: 1

Instrument :
 BNA_M
 ClientSampled :
 F6C62

Manual Integrations
APPROVED
 Sohil
 2/1/2018 6:04:58 PM

Quant Time: Feb 01 02:05:00 2018
 Quant Method : Z:\HPCHEM1\BNA M\METHODS\SOM-EPA-BM013118.M
 Quant Title : SVOA CALIBRATION
 QLast Update : Thu Feb 01 01:00:18 2018
 Response via : Initial Calibration





#44
 Dimethylphthalate
 Concen: 5.686 ng/ul
 RT: 13.69 min Scan# 1819
 Delta R.T. 0.00 min
 Lab File: BM014048.D
 Acq: 31 Jan 2018 23:29

Tot Ion	Ratio	Lower	Upper
163	100		
194	3.5	3.5	5.3
164	11.1	8.2	12.4

Instrument :
 BNA_M
 ClientSampled :
 F6C62

Manual Integrations
APPROVED
 Sohil
 2/1/2018 6:04:58 PM

