

Data Path : Z:\HPCHEM1\BNA M\DATA\BM013118\  
 Data File : BM014049.D  
 Acq On : 01 Feb 2018 00:05  
 Operator : SJ/JU  
 Sample : J1315-03  
 Misc :  
 ALS Vial : 16 Sample Multiplier: 1

Instrument :  
 BNA\_M  
 ClientSampled :  
 F6C60

Manual Integrations  
 APPROVED

Sohil  
 2/1/2018 6:05:00 PM

Quant Time: Feb 01 02:08:27 2018  
 Quant Method : Z:\HPCHEM1\BNA M\METHODS\SOM-EPA-BM013118.M  
 Quant Title : SVOA CALIBRATION  
 QLast Update : Thu Feb 01 01:00:18 2018  
 Response via : Initial Calibration

Internal Standards	R.T.	QIon	Response	Conc	Units	Dev(Min)
1) 1,4-Dichlorobenzene-d4	7.56	152	101425	20.00	ng/ul	0.00
18) Naphthalene-d8	10.33	136	421360	20.00	ng/ul	0.00
35) Acenaphthene-d10	14.22	164	269132	20.00	ng/ul	0.00
61) Phenanthrene-d10	16.97	188	651795	20.00	ng/ul	0.00
75) Chrysene-d12	21.18	240	738979	20.00	ng/ul	0.00
83) Perylene-d12	23.36	264	723227	20.00	ng/ul	0.00

## System Monitoring Compounds

3) 1,4-Dioxane-d8	3.13	96	9386	4.25	ng/uL	0.00
5) Phenol-d5	6.75	99	162370	21.30	ng/ul	0.00
7) Bis-(2-Chloroethyl)ether-d	6.91	67	105268	22.89	ng/ul	0.00
9) 2-Chlorophenol-d4	7.10	132	140705	23.31	ng/ul	0.00
13) 4-Methylphenol-d8	8.27	113	138614	21.72	ng/ul	0.00
19) Nitrobenzene-d5	8.72	128	72967	23.99	ng/ul	0.00
22) 2-Nitrophenol-d4	9.43	143	80450	23.90	ng/ul	0.00
26) 2,4-Dichlorophenol-d3	9.97	165	138930	19.62	ng/ul	0.00
29) 4-Chloroaniline-d4	10.49	131	157257	25.62	ng/ul	0.00
43) Dimethylphthalate-d6	13.63	166	542321	24.28	ng/ul	0.00
46) Acenaphthylene-d8	13.90	160	655443	24.19	ng/ul	0.00
51) 4-Nitrophenol-d4	14.46	143	48511	15.76	ng/ul	0.00
57) Fluorene-d10	15.22	176	476623	23.84	ng/ul	0.00
62) 4,6-Dinitro-2-methylphenol	15.37	200	68368	17.08	ng/ul	0.00
70) Anthracene-d10	17.07	188	758993m	23.98	ng/ul	0.00
76) Pyrene-d10	19.37	212	882056	24.79	ng/ul	0.00
87) Benzo(a)pyrene-d12	23.22	264	866464	24.41	ng/ul	0.00

## Target Compounds

Target Compounds	R.T.	QIon	Response	Conc	Units	Ovalue
44) Dimethylphthalate	13.69	163	98138	4.558	ng/ul	98

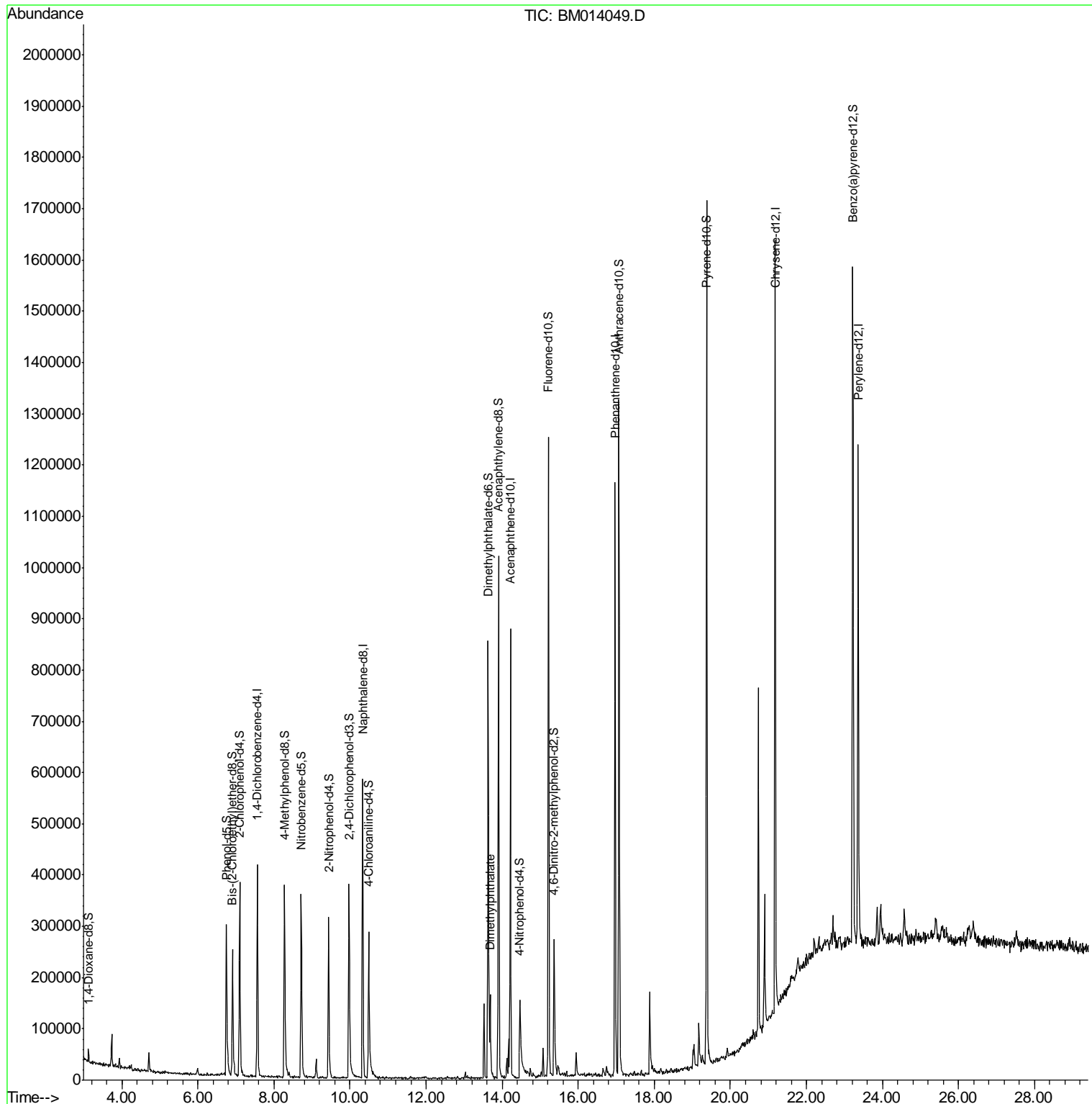
(#) = qualifier out of range (m) = manual integration (+) = signals summed

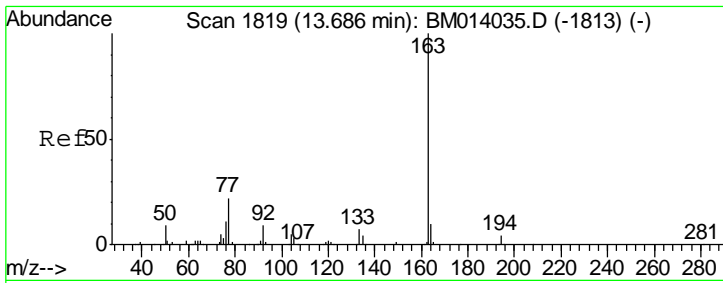
Data Path : Z:\HPCHEM1\BNA M\DATA\BM013118\  
 Data File : BM014049.D  
 Acq On : 01 Feb 2018 00:05  
 Operator : SJ/JU  
 Sample : J1315-03  
 Misc :  
 ALS Vial : 16 Sample Multiplier: 1

Instrument :  
 BNA\_M  
 Client Sampled :  
 F6C60

Manual Integrations  
 APPROVED  
 Sohil  
 2/1/2018 6:05:00 PM

Quant Time: Feb 01 02:08:27 2018  
 Quant Method : Z:\HPCHEM1\BNA M\METHODS\SOM-EPA-BM013118.M  
 Quant Title : SVOA CALIBRATION  
 QLast Update : Thu Feb 01 01:00:18 2018  
 Response via : Initial Calibration





#44  
 Dimethylphthalate  
 Concen: 4.558 ng/ul  
 RT: 13.69 min Scan# 1819  
 Delta R.T. 0.00 min  
 Lab File: BM014049.D  
 Acq: 01 Feb 2018 00:05

**Instrument :**  
 BNA\_M  
**ClientSampled :**  
 F6C60

Tot Ion:163 Resp: 98138

Ion	Ratio	Lower	Upper
163	100		
194	4.6	3.5	5.3
164	9.5	8.2	12.4

**Manual Integrations**  
**APPROVED**  
 Sohil  
 2/1/2018 6:05:00 PM

