

Data Path : Z:\HPCHEM1\BNA M\DATA\BM013118\  
 Data File : BM014067.D  
 Acq On : 01 Feb 2018 11:13  
 Operator : SJ/JU  
 Sample : J1316-08  
 Misc :  
 ALS Vial : 33 Sample Multiplier: 1

**Instrument :**  
 BNA\_M  
**ClientSampleId :**  
 F6C91

**Manual Integrations**  
**APPROVED**  
 Sohil  
 2/1/2018 6:05:39 PM

Quant Time: Feb 12 18:36:54 2018  
 Quant Method : Z:\HPCHEM1\BNA M\METHODS\SOM-EPA-BM013118.M  
 Quant Title : SVOA CALIBRATION  
 QLast Update : Thu Feb 01 03:26:19 2018  
 Response via : Initial Calibration

Internal Standards	R.T.	QIon	Response	Conc	Units	Dev(Min)
1) 1,4-Dichlorobenzene-d4	7.56	152	113807	20.00	ng/ul	0.00
18) Naphthalene-d8	10.33	136	466068	20.00	ng/ul	0.00
35) Acenaphthene-d10	14.21	164	279617	20.00	ng/ul	0.00
61) Phenanthrene-d10	16.97	188	664808	20.00	ng/ul	0.00
75) Chrysene-d12	21.17	240	738708	20.00	ng/ul	0.00
83) Perylene-d12	23.36	264	742532	20.00	ng/ul	0.00

System Monitoring Compounds

3) 1,4-Dioxane-d8	3.12	96	9099	3.67	ng/uL	0.00
5) Phenol-d5	6.75	99	201668	23.58	ng/ul	0.00
7) Bis-(2-Chloroethyl)ether-d	6.90	67	134291	26.02	ng/ul	0.00
9) 2-Chlorophenol-d4	7.09	132	173992	25.69	ng/ul	0.00
13) 4-Methylphenol-d8	8.27	113	174897	24.42	ng/ul	0.00
19) Nitrobenzene-d5	8.72	128	90874	27.01	ng/ul	0.00
22) 2-Nitrophenol-d4	9.43	143	63997	17.19	ng/ul	0.00
26) 2,4-Dichlorophenol-d3	9.97	165	175033	22.35	ng/ul	0.00
29) 4-Chloroaniline-d4	10.49	131	214557	31.60	ng/ul	0.00
43) Dimethylphthalate-d6	13.63	166	531103	22.89	ng/ul	0.00
46) Acenaphthylene-d8	13.90	160	792394	28.14	ng/ul	0.00
51) 4-Nitrophenol-d4	14.47	143	38813m	12.14	ng/ul	0.01
57) Fluorene-d10	15.22	176	559815	26.95	ng/ul	0.00
62) 4,6-Dinitro-2-methylphenol	15.37	200	17463	4.28	ng/ul	0.01
70) Anthracene-d10	17.07	188	876853	27.17	ng/ul	0.00
76) Pyrene-d10	19.37	212	995048	27.97	ng/ul	0.00
87) Benzo(a)pyrene-d12	23.22	264	980945	26.92	ng/ul	0.00

Target Compounds

					Ovalue
6) Phenol	6.77	94	24619	2.877	ng/ul 92
44) Dimethylphthalate	13.68	163	111076	4.965	ng/ul 99

(#) = qualifier out of range (m) = manual integration (+) = signals summed

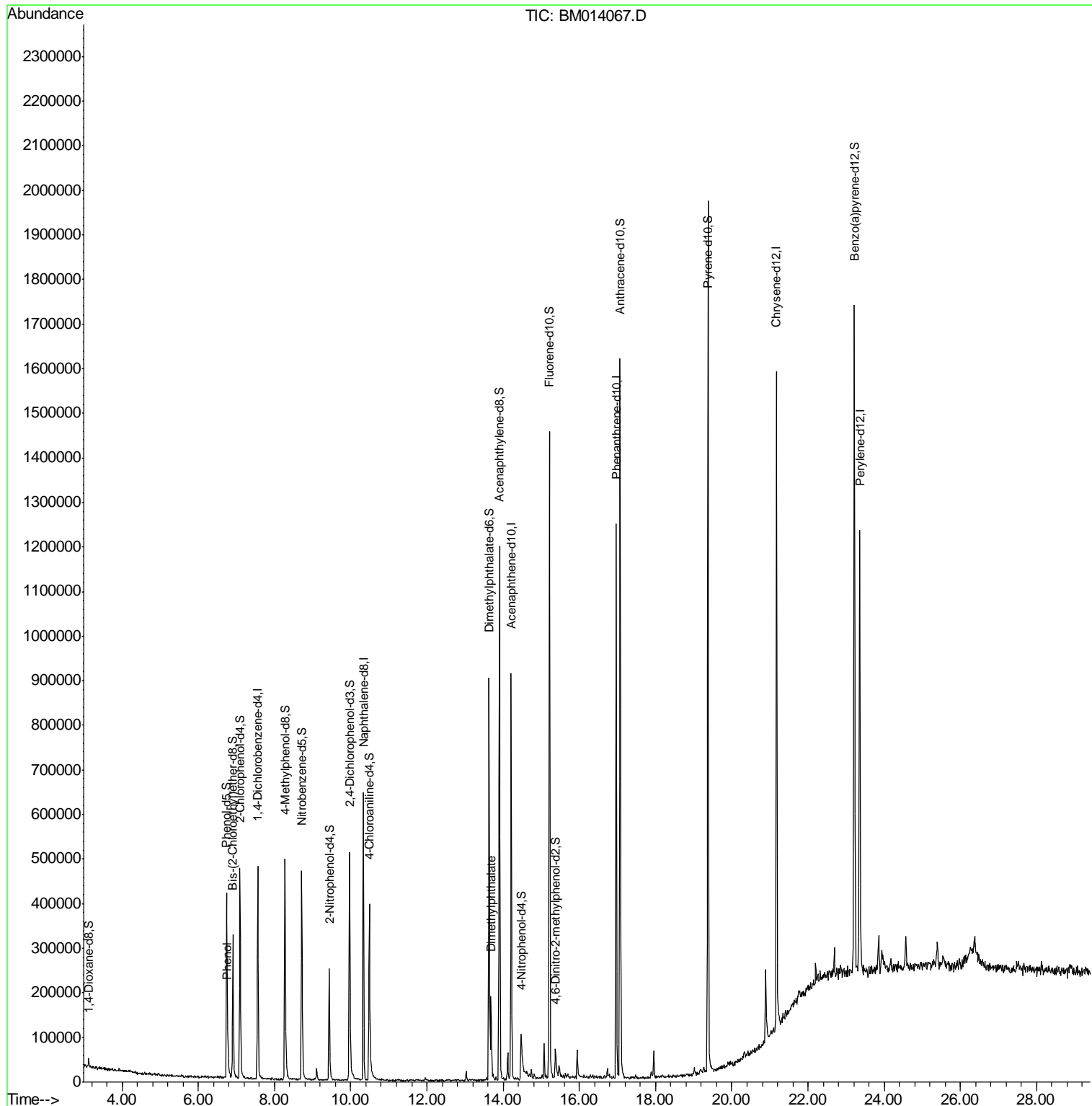
Data Path : Z:\HPCHEM1\BNA M\DATA\BM013118\  
 Data File : BM014067.D  
 Acq On : 01 Feb 2018 11:13  
 Operator : SJ/JU  
 Sample : J1316-08  
 Misc :  
 ALS Vial : 33 Sample Multiplier: 1

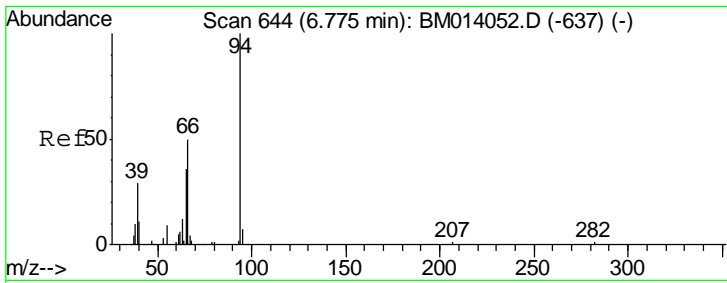
Instrument :  
 BNA\_M  
 Client Sampled :  
 F6C91

Manual Integrations  
 APPROVED

Sohil  
 2/1/2018 6:05:39 PM

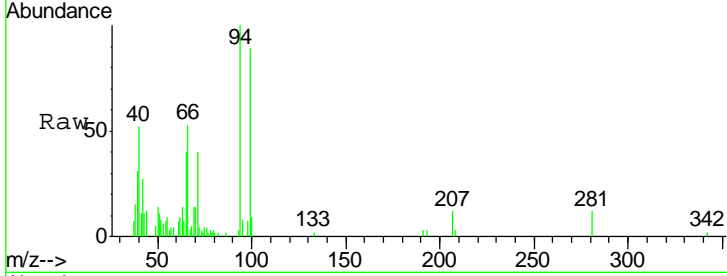
Quant Time: Feb 12 18:36:54 2018  
 Quant Method : Z:\HPCHEM1\BNA M\METHODS\SOM-EPA-BM013118.M  
 Quant Title : SVOA CALIBRATION  
 QLast Update : Thu Feb 01 03:26:19 2018  
 Response via : Initial Calibration





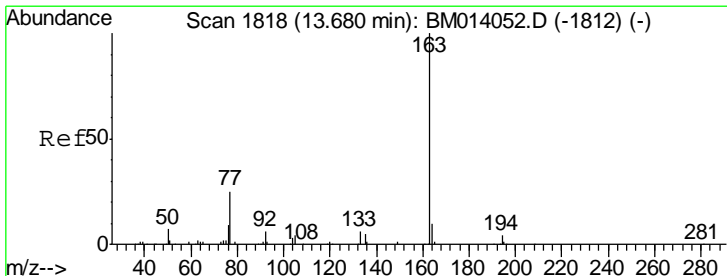
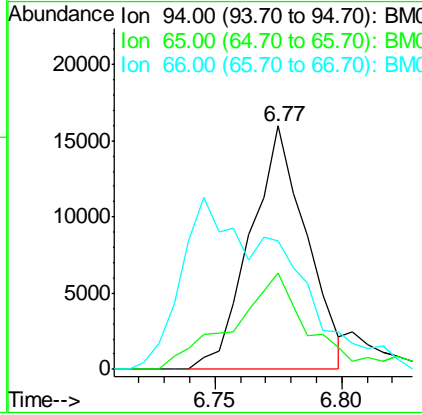
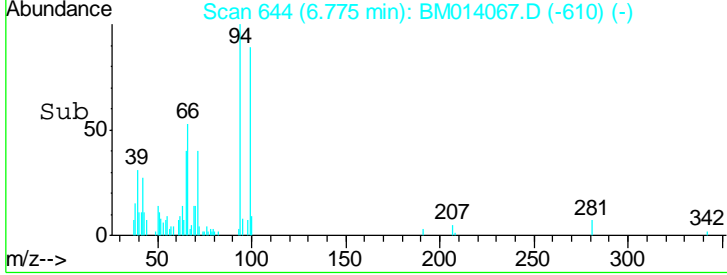
#6  
 Phenol  
 Concen: 2.877 ng/ul  
 RT: 6.77 min Scan# 644  
 Delta R.T. 0.00 min  
 Lab File: BM014067.D  
 Acq: 01 Feb 2018 11:13

**Instrument :**  
 BNA\_M  
**ClientSampled :**  
 F6C91

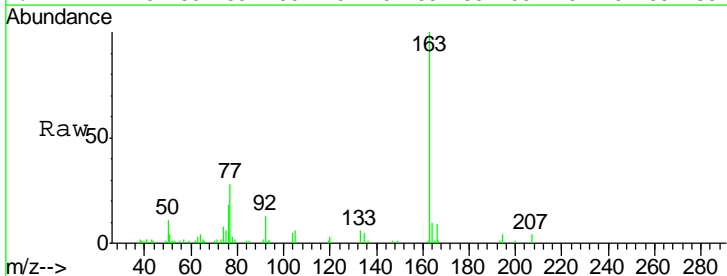


Tgt Ion	Resp	Lower	Upper
94	100		
65	39.8	28.2	42.4
66	52.7	47.2	70.8

**Manual Integrations**  
**APPROVED**  
 Sohil  
 2/1/2018 6:05:39 PM



#44  
 Dimethylphthalate  
 Concen: 4.965 ng/ul  
 RT: 13.68 min Scan# 1818  
 Delta R.T. 0.00 min  
 Lab File: BM014067.D  
 Acq: 01 Feb 2018 11:13



Tgt Ion	Resp	Lower	Upper
163	100		
194	4.1	3.5	5.3
164	10.1	8.2	12.4

