

Data Path : Z:\HPCHEM1\BNA M\DATA\BM013118\  
 Data File : BM014053.D  
 Acq On : 01 Feb 2018 02:52  
 Operator : SJ/JU  
 Sample : J1314-10  
 Misc :  
 ALS Vial : 19 Sample Multiplier: 1

Instrument :  
 BNA\_M  
 ClientSampled :  
 F6C47

## Integration Parameters: LSCINT.P

Integrator: RTE  
 Smoothing : OFF  
 Sampling : 1  
 Start Thrs: 0.2  
 Stop Thrs : 0

Filtering: 5  
 Min Area: 1 % of largest Peak  
 Max Peaks: 100  
 Peak Location: TOP

If leading or trailing edge < 100 prefer < Baseline drop else tangent >  
 Peak separation: 5

Method : Z:\HPCHEM1\BNA M\METHODS\SOM-EPA-BM013118.M  
 Title : SVOA CALIBRATION

Signal : TIC

peak #	R.T. min	first scan	max scan	last scan	PK TY	peak height	corr. area	corr. % max.	% of total
1	3.122	20	23	28	rVB2	31625	41358	1.25%	0.120%
2	6.752	634	640	653	rBV	451552	840846	25.50%	2.441%
3	6.910	661	667	681	rBV	353958	562065	17.05%	1.632%
4	7.099	693	699	714	rBV2	508343	842472	25.55%	2.446%
5	7.563	771	778	789	rBV	411390	714082	21.66%	2.073%
6	8.281	893	900	913	rBV	557407	1045843	31.72%	3.036%
7	8.722	968	975	987	rBV	512535	907003	27.51%	2.633%
8	9.434	1090	1096	1109	rBV	436925	814818	24.71%	2.365%
9	9.969	1181	1187	1199	rBV	566281	1103059	33.45%	3.202%
10	10.334	1243	1249	1256	rBV	599597	1007095	30.54%	2.924%
11	10.493	1269	1276	1292	rBV	478234	1041347	31.58%	3.023%
12	13.639	1805	1811	1816	rBV	1277065	1855838	56.28%	5.388%
13	13.686	1816	1819	1827	rVB	244943	362478	10.99%	1.052%
14	13.910	1849	1857	1868	rBV	1406134	2149205	65.18%	6.239%
15	14.122	1887	1893	1898	rBV	44709	66605	2.02%	0.193%
16	14.216	1902	1909	1919	rBV2	914132	1412720	42.84%	4.101%
17	14.463	1944	1951	1966	rBV2	242218	643370	19.51%	1.868%
18	15.028	2042	2047	2051	rBV2	25650	36255	1.10%	0.105%
19	15.080	2051	2056	2061	rVB	83228	100152	3.04%	0.291%
20	15.216	2069	2079	2091	rBV	1750352	2632312	79.83%	7.642%
21	15.363	2099	2104	2117	rBV	382066	700186	21.23%	2.033%
22	15.463	2117	2121	2130	rVB7	28736	71969	2.18%	0.209%
23	15.945	2199	2203	2211	rBV2	78159	124232	3.77%	0.361%
24	16.739	2333	2338	2342	rBV3	48841	68974	2.09%	0.200%
25	16.974	2371	2378	2384	rBV	1227018	1722563	52.24%	5.001%
26	17.074	2388	2395	2408	rVV	1926506	2871678	87.09%	8.337%
27	17.480	2459	2464	2468	rBV3	29580	39223	1.19%	0.114%
28	17.880	2527	2532	2543	rBV3	115851	231153	7.01%	0.671%
29	19.174	2747	2752	2761	rBV10	45898	95601	2.90%	0.278%
30	19.268	2764	2768	2773	rBV4	18364	33457	1.01%	0.097%
31	19.380	2781	2787	2795	rBV	2443482	3297384	100.00%	9.572%
32	20.898	3041	3045	3052	rBV8	119893	223718	6.78%	0.649%
33	21.180	3088	3093	3104	rBV	1392372	1994773	60.50%	5.791%
34	23.227	3434	3441	3451	rBV2	1709508	3048220	92.44%	8.849%

Data Path : Z:\HPCHEM1\BNA M\DATA\BM013118\  
Data File : BM014053.D  
Acq On : 01 Feb 2018 02:52  
Operator : SJ/JU  
Sample : J1314-10  
Misc :  
ALS Vial : 19 Sample Multiplier: 1

Instrument :  
BNA\_M  
ClientSampleId :  
F6C47

Integration Parameters: LSCINT.P  
Integrator: RTE  
Smoothing : OFF Filtering: 5  
Sampling : 1 Min Area: 1 % of largest Peak  
Start Thrs: 0.2 Max Peaks: 100  
Stop Thrs : 0 Peak Location: TOP

If leading or trailing edge < 100 prefer < Baseline drop else tangent >  
Peak separation: 5

Method : Z:\HPCHEM1\BNA M\METHODS\SOM-EPA-BM013118.M  
Title : SVOA CALIBRATION

35	23.362	3458	3464	3474	rVB	880606	1744767	52.91%	5.065%
----	--------	------	------	------	-----	--------	---------	--------	--------

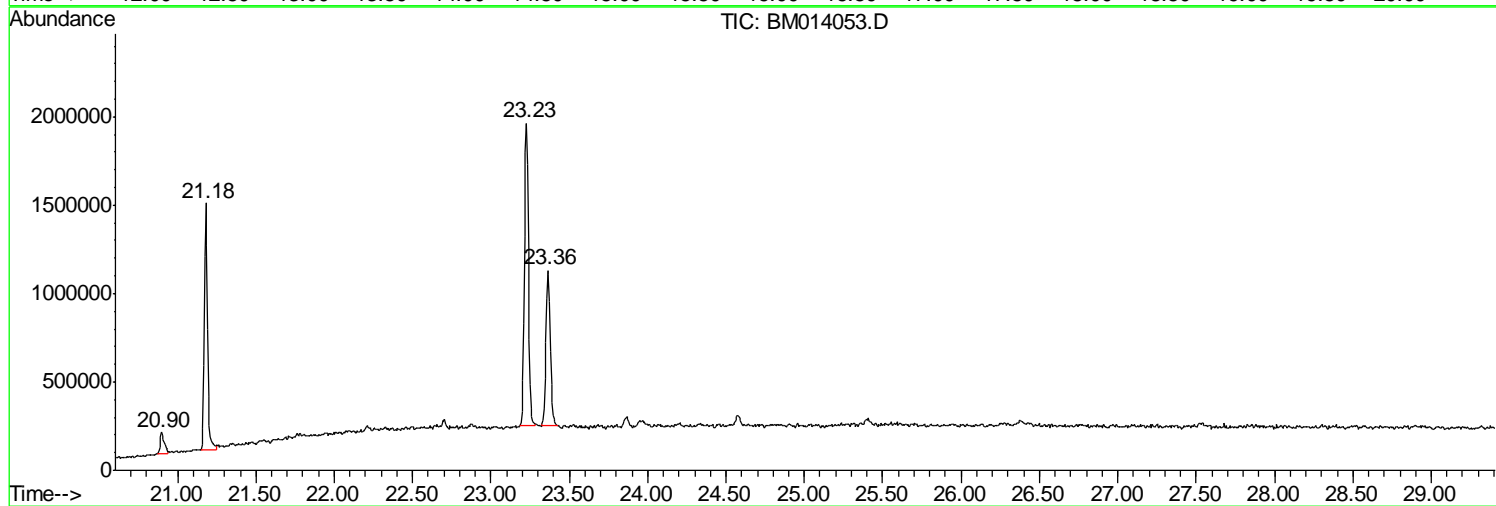
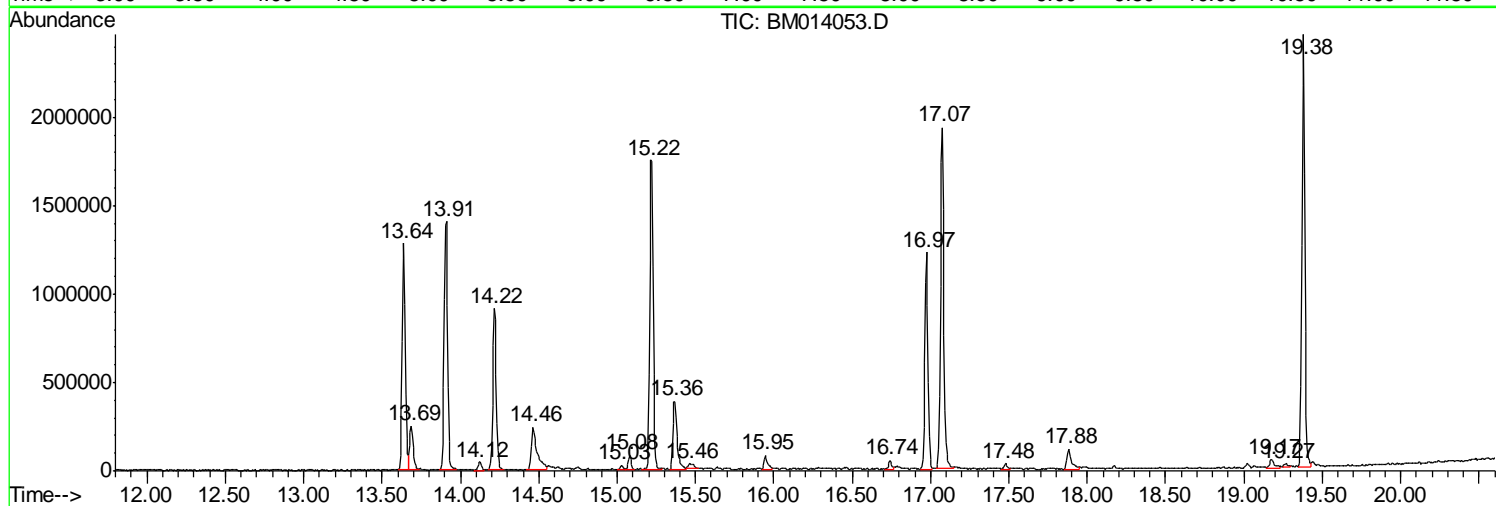
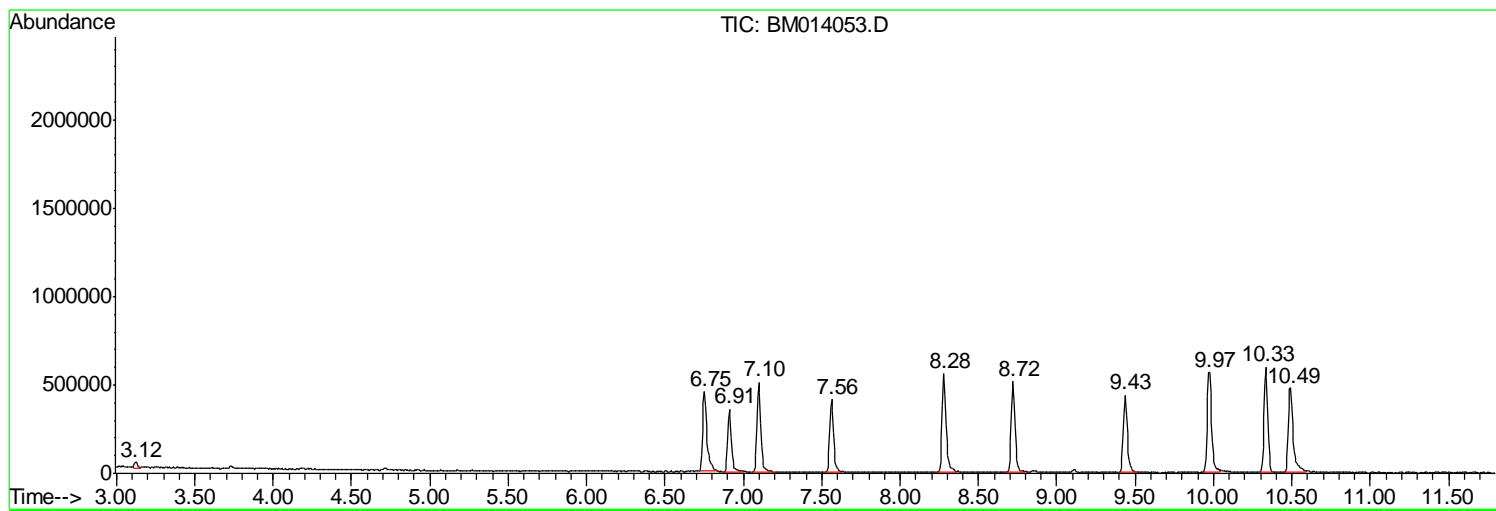
Sum of corrected areas: 34446821

Data Path : Z:\HPCHEM1\BNA M\DATA\BM013118\  
Data File : BM014053.D  
Acq On : 01 Feb 2018 02:52  
Operator : SJ/JU  
Sample : J1314-10  
Misc :  
ALS Vial : 19 Sample Multiplier: 1

Instrument :  
BNA\_M  
ClientSampleId :  
F6C47

Quant Method : Z:\HPCHEM1\BNA M\METHODS\SOM-EPA-BM013118.M  
Quant Title : SVOA CALIBRATION

TIC Library : C:\DATABASE\NIST11.L  
TIC Integration Parameters: LSCINT.P



Data Path : Z:\HPCHEM1\BNA M\DATA\BM013118\  
 Data File : BM014053.D  
 Acq On : 01 Feb 2018 02:52  
 Operator : SJ/JU  
 Sample : J1314-10  
 Misc :  
 ALS Vial : 19 Sample Multiplier: 1

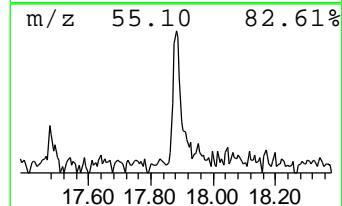
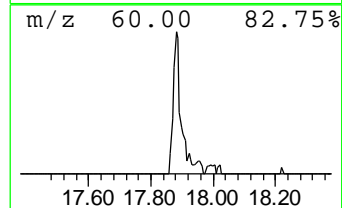
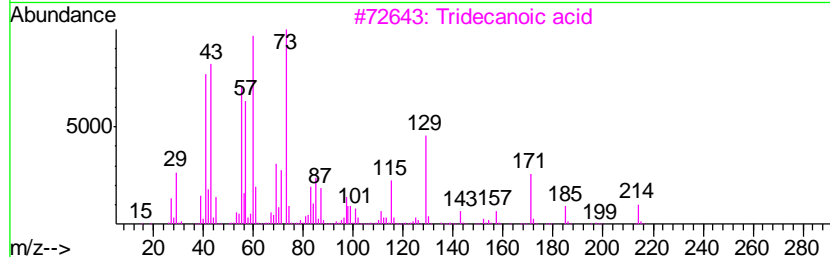
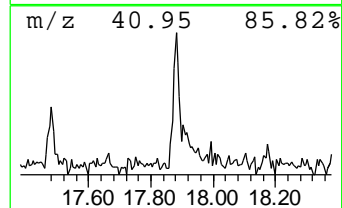
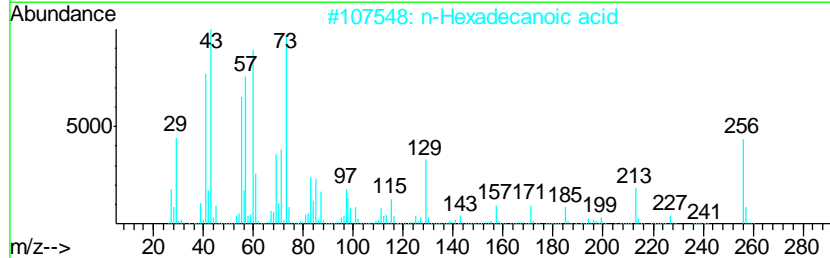
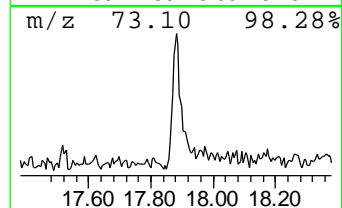
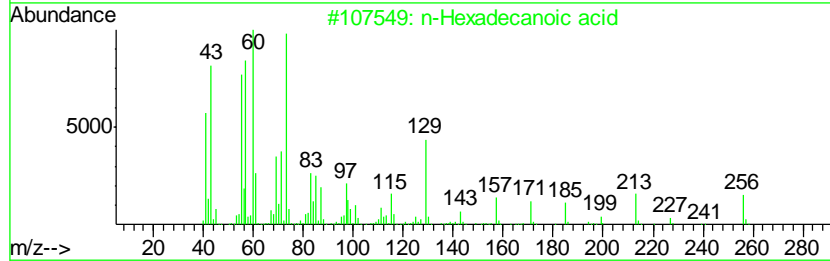
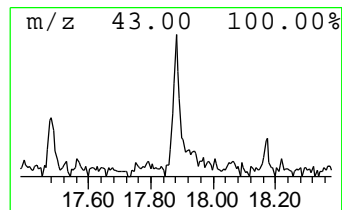
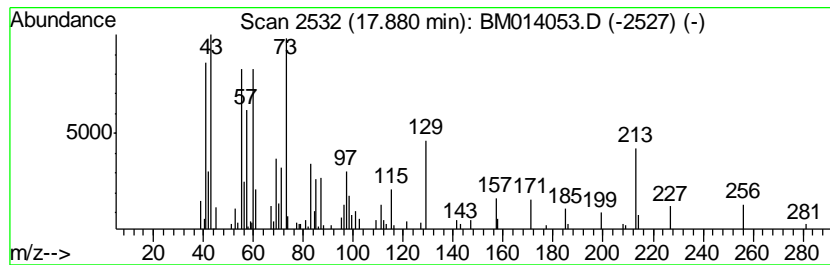
Instrument :  
 BNA\_M  
 ClientSampled :  
 F6C47

Quant Method : Z:\HPCHEM1\BNA M\METHODS\SOM-EPA-BM013118.M  
 Quant Title : SVOA CALIBRATION

TIC Library : C:\DATABASE\NIST11.L  
 TIC Integration Parameters: LSCINT.P

\*\*\*\*\*  
 Peak Number 1 n-Hexadecanoic acid Concentration Rank 1

R.T.	EstConc	Area	Relative to ISTD	R.T.
17.88	2.68 ng/ul	231153	Phenanthrene-d10	16.97
Hit# of	5	Tentative ID	MW MolForm	CAS# Qual
1		n-Hexadecanoic acid	256 C16H32O2	000057-10-3 97
2		n-Hexadecanoic acid	256 C16H32O2	000057-10-3 95
3		Tridecanoic acid	214 C13H26O2	000638-53-9 86
4		Tridecanoic acid	214 C13H26O2	000638-53-9 70
5		Tridecanoic acid	214 C13H26O2	000638-53-9 70



Data Path : Z:\HPCHEM1\BNA M\DATA\BM013118\  
 Data File : BM014053.D  
 Acq On : 01 Feb 2018 02:52  
 Operator : SJ/JU  
 Sample : J1314-10  
 Misc :  
 ALS Vial : 19 Sample Multiplier: 1

Instrument :  
 BNA\_M  
 ClientSampled :  
 F6C47

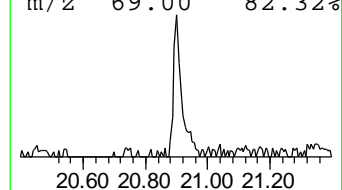
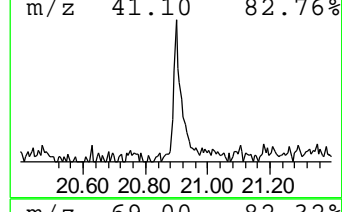
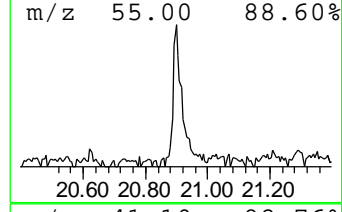
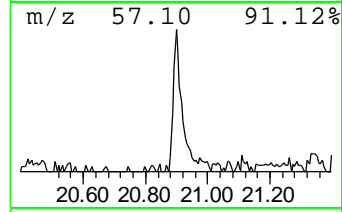
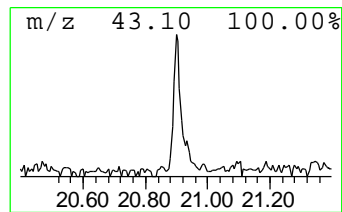
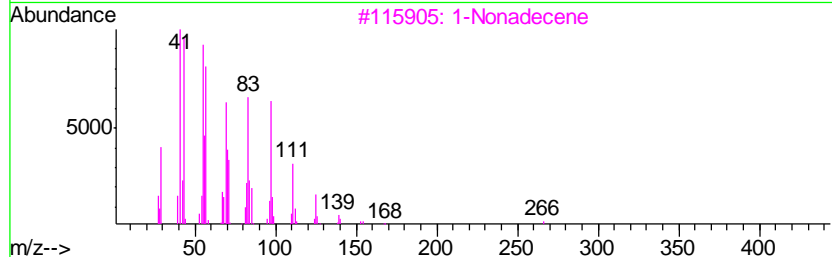
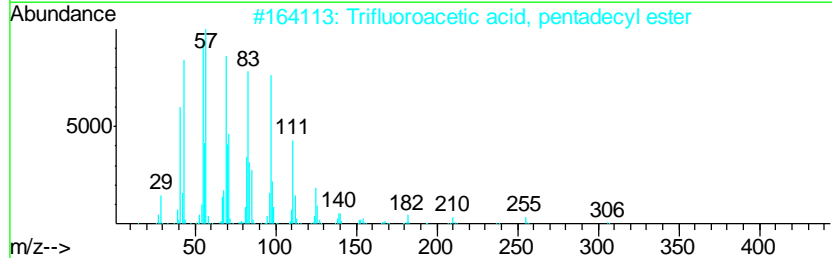
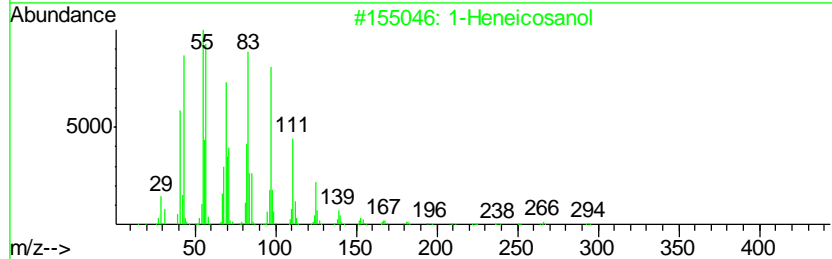
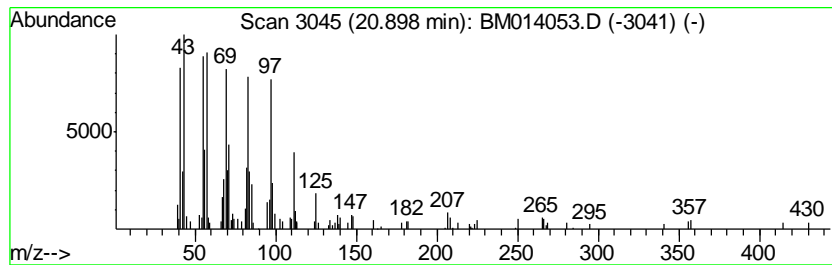
Quant Method : Z:\HPCHEM1\BNA M\METHODS\SOM-EPA-BM013118.M  
 Quant Title : SVOA CALIBRATION

TIC Library : C:\DATABASE\NIST11.L  
 TIC Integration Parameters: LSCINT.P

\*\*\*\*\*  
 Peak Number 2 1-Heneicosanol Concentration Rank 2

R.T.	EstConc	Area	Relative to ISTD	R.T.
20.90	2.24 ng/ul	223718	Chrysene-d12	21.18

Hit#	of	Tentative ID	MW	MolForm	CAS#	Qual
1	5	1-Heneicosanol	312	C21H44O	015594-90-8	94
2		Trifluoroacetic acid, pentadecyl...	324	C17H31F3O2	959010-23-2	94
3		1-Nonadecene	266	C19H38	018435-45-5	93
4		Trifluoroacetoxy hexadecane	338	C18H33F3O2	006222-03-3	91
5		Pentafluoropropionic acid, penta...	374	C18H31F5O2	959092-08-1	91



Data Path : Z:\HPCHEM1\BNA\_M\DATA\BM013118\  
Data File : BM014053.D  
Acq On : 01 Feb 2018 02:52  
Operator : SJ/JU  
Sample : J1314-10  
Misc :  
ALS Vial : 19 Sample Multiplier: 1

Instrument :  
BNA\_M  
ClientSampleId :  
F6C47

Quant Method : Z:\HPCHEM1\BNA\_M\METHODS\SOM-EPA-BM013118.M  
Quant Title : SVOA CALIBRATION

TIC Library : C:\DATABASE\NIST11.L  
TIC Integration Parameters: LSCINT.P

TIC Top Hit name	RT	EstConc	Units	Response	--Internal Standard--			
					#	RT	Resp	Conc
n-Hexadecanoic acid	17.88	2.7	ng/ul	231153	4	16.97	1722560	20.0
1-Heneicosanol	20.90	2.2	ng/ul	223718	5	21.18	1994770	20.0