

Data Path : Z:\HPCHEM1\BNA M\DATA\BM013118\
 Data File : BM014054.D
 Acq On : 01 Feb 2018 03:28
 Operator : SJ/JU
 Sample : J1314-15
 Misc :
 ALS Vial : 20 Sample Multiplier: 1

Instrument :
 BNA_M
 ClientSampled :
 F6C52

Integration Parameters: LSCINT.P

Integrator: RTE
 Smoothing : OFF Filtering: 5
 Sampling : 1 Min Area: 1 % of largest Peak
 Start Thrs: 0.2 Max Peaks: 100
 Stop Thrs : 0 Peak Location: TOP

If leading or trailing edge < 100 prefer < Baseline drop else tangent >
 Peak separation: 5

Method : Z:\HPCHEM1\BNA M\METHODS\SOM-EPA-BM013118.M
 Title : SVOA CALIBRATION

Signal : TIC

peak #	R.T. min	first scan	max scan	last scan	PK TY	peak height	corr. area	corr. % max.	% of total
1	6.745	633	639	653	rBV	400416	793393	26.02%	2.362%
2	6.904	660	666	682	rBV	314679	520134	17.06%	1.548%
3	7.092	692	698	712	rBV	450424	771937	25.32%	2.298%
4	7.557	771	777	788	rBV	420288	734329	24.08%	2.186%
5	8.275	893	899	913	rBV2	533647	971958	31.88%	2.894%
6	8.716	967	974	986	rBV	478768	846516	27.76%	2.520%
7	9.433	1090	1096	1108	rBV2	413423	776111	25.45%	2.311%
8	9.969	1180	1187	1199	rBV	543530	1033019	33.88%	3.075%
9	10.333	1241	1249	1259	rVB	598746	1014959	33.29%	3.022%
10	10.486	1268	1275	1289	rBV	453649	961745	31.54%	2.863%
11	13.633	1801	1810	1815	rBV	1229189	1716661	56.30%	5.111%
12	13.680	1815	1818	1836	rVB	310436	528956	17.35%	1.575%
13	13.904	1850	1856	1872	rBV	1354370	2014473	66.07%	5.997%
14	14.121	1889	1893	1901	rBV3	35122	51723	1.70%	0.154%
15	14.216	1901	1909	1918	rBV2	900302	1379406	45.24%	4.107%
16	14.463	1945	1951	1966	rBV	194382	513265	16.83%	1.528%
17	15.080	2051	2056	2060	rVV	53870	72619	2.38%	0.216%
18	15.215	2073	2079	2088	rBV	1670565	2410248	79.05%	7.176%
19	15.362	2097	2104	2117	rBV2	314925	582197	19.09%	1.733%
20	15.462	2117	2121	2123	rBV3	26477	38144	1.25%	0.114%
21	15.945	2198	2203	2209	rBV2	54069	91395	3.00%	0.272%
22	16.739	2334	2338	2343	rBV4	32457	51898	1.70%	0.155%
23	16.968	2371	2377	2386	rBV	1155295	1687131	55.33%	5.023%
24	17.068	2388	2394	2406	rBV	1731012	2651626	86.96%	7.894%
25	17.480	2458	2464	2469	rBV3	19002	33260	1.09%	0.099%
26	17.880	2527	2532	2541	rBV2	231267	390662	12.81%	1.163%
27	19.021	2723	2726	2729	rBV2	37373	50267	1.65%	0.150%
28	19.168	2747	2751	2760	rBV5	111357	200247	6.57%	0.596%
29	19.374	2780	2786	2794	rBV2	2156965	3019166	99.01%	8.988%
30	20.897	3040	3045	3055	rBV2	343372	634777	20.82%	1.890%
31	21.180	3088	3093	3101	rBV	1446248	1974652	64.76%	5.879%
32	22.009	3231	3234	3238	rVB3	200564	240343	7.88%	0.716%
33	23.221	3434	3440	3448	rVB2	1689807	3049202	100.00%	9.078%
34	23.362	3457	3464	3473	rBV	926085	1783322	58.48%	5.309%

Data Path : Z:\HPCHEM1\BNA M\DATA\BM013118\
Data File : BM014054.D
Acq On : 01 Feb 2018 03:28
Operator : SJ/JU
Sample : J1314-15
Misc :
ALS Vial : 20 Sample Multiplier: 1

Instrument :
BNA_M
ClientSampleId :
F6C52

Integration Parameters: LSCINT.P
Integrator: RTE
Smoothing : OFF Filtering: 5
Sampling : 1 Min Area: 1 % of largest Peak
Start Thrs: 0.2 Max Peaks: 100
Stop Thrs : 0 Peak Location: TOP

If leading or trailing edge < 100 prefer < Baseline drop else tangent >
Peak separation: 5

Method : Z:\HPCHEM1\BNA M\METHODS\SOM-EPA-BM013118.M
Title : SVOA CALIBRATION

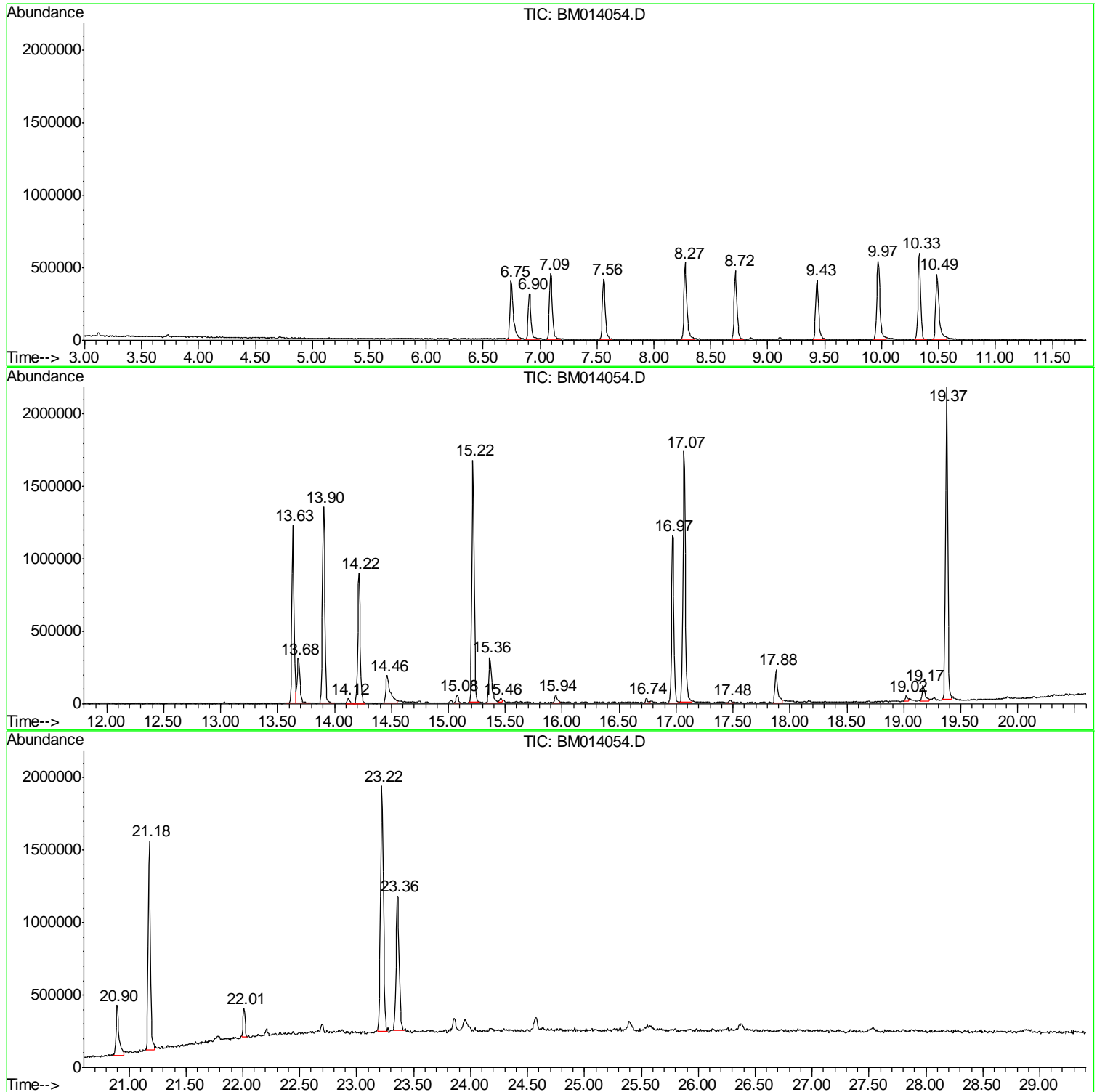
Sum of corrected areas: 33589741

Data Path : Z:\HPCHEM1\BNA M\DATA\BM013118\
Data File : BM014054.D
Acq On : 01 Feb 2018 03:28
Operator : SJ/JU
Sample : J1314-15
Misc :
ALS Vial : 20 Sample Multiplier: 1

Instrument :
BNA_M
ClientSampled :
F6C52

Quant Method : Z:\HPCHEM1\BNA M\METHODS\SOM-EPA-BM013118.M
Quant Title : SVOA CALIBRATION

TIC Library : C:\DATABASE\NIST11.L
TIC Integration Parameters: LSCINT.P



Data Path : Z:\HPCHEM1\BNA M\DATA\BM013118\
 Data File : BM014054.D
 Acq On : 01 Feb 2018 03:28
 Operator : SJ/JU
 Sample : J1314-15
 Misc :
 ALS Vial : 20 Sample Multiplier: 1

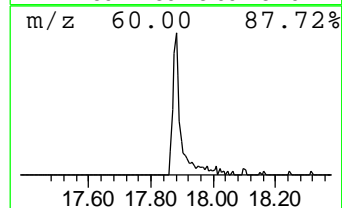
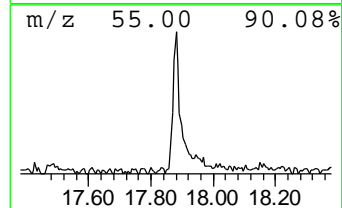
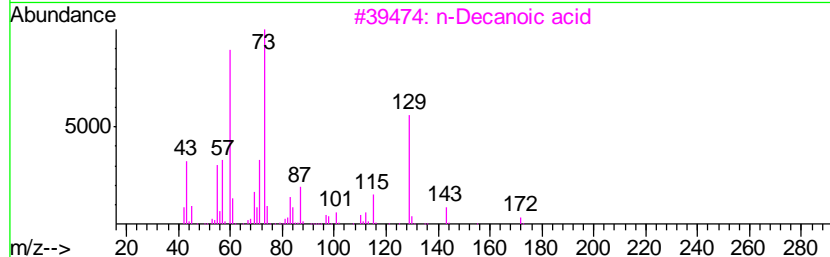
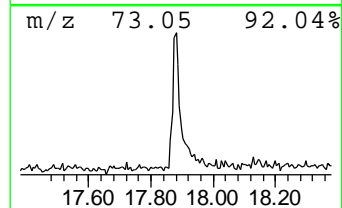
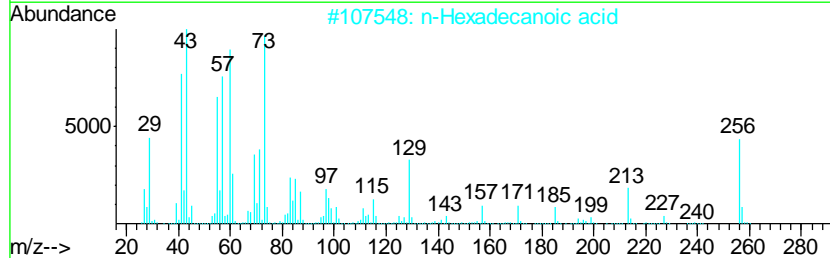
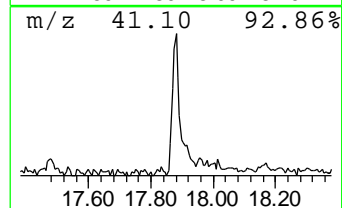
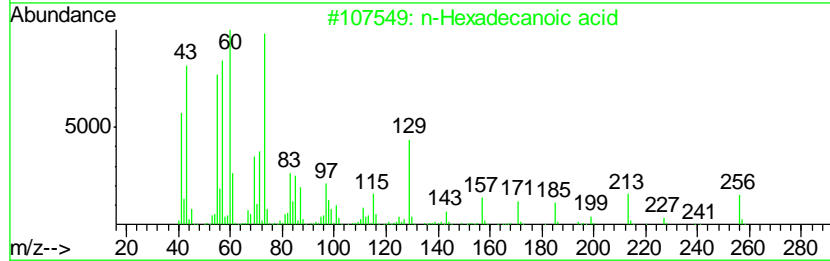
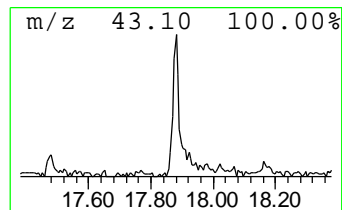
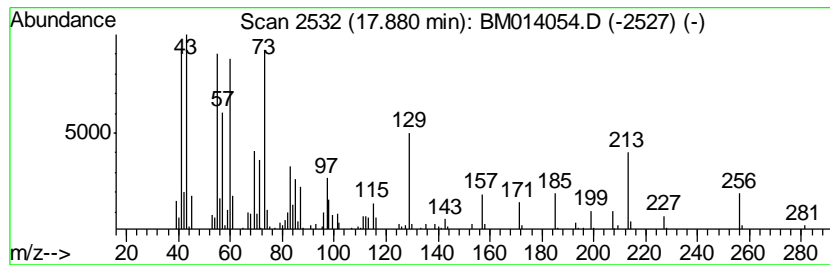
Instrument :
 BNA_M
 ClientSampleId :
 F6C52

Quant Method : Z:\HPCHEM1\BNA M\METHODS\SOM-EPA-BM013118.M
 Quant Title : SVOA CALIBRATION

TIC Library : C:\DATABASE\NIST11.L
 TIC Integration Parameters: LSCINT.P

 Peak Number 1 n-Hexadecanoic acid Concentration Rank 2

R.T.	EstConc	Area	Relative to ISTD	R.T.		
17.88	4.63 ng/ul	390662	Phenanthrene-d10	16.97		
Hit# of	5	Tentative ID	MW	MolForm	CAS#	Qual
1		n-Hexadecanoic acid	256	C16H32O2	000057-10-3	93
2		n-Hexadecanoic acid	256	C16H32O2	000057-10-3	89
3		n-Decanoic acid	172	C10H20O2	000334-48-5	70
4		n-Hexadecanoic acid	256	C16H32O2	000057-10-3	64
5		Pentadecanoic acid	242	C15H30O2	001002-84-2	62



Data Path : Z:\HPCHEM1\BNA M\DATA\BM013118\
 Data File : BM014054.D
 Acq On : 01 Feb 2018 03:28
 Operator : SJ/JU
 Sample : J1314-15
 Misc :
 ALS Vial : 20 Sample Multiplier: 1

Instrument :
 BNA_M
 ClientSampleID :
 F6C52

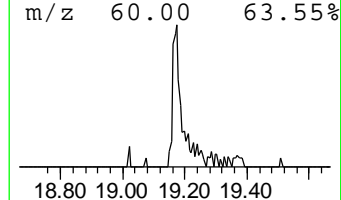
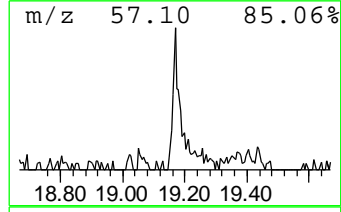
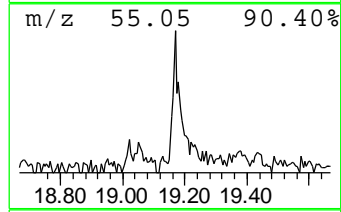
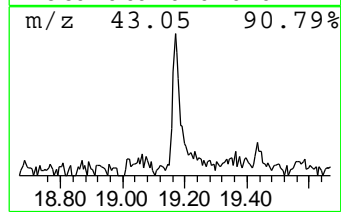
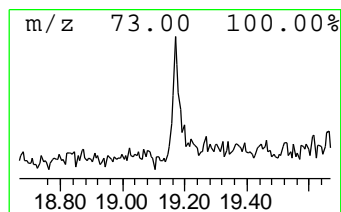
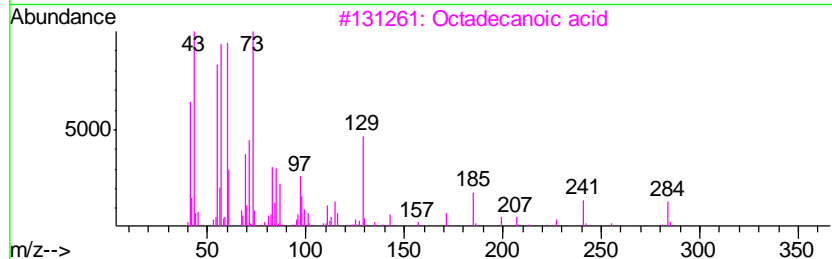
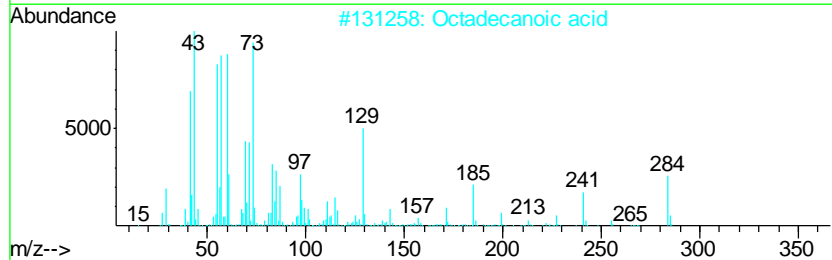
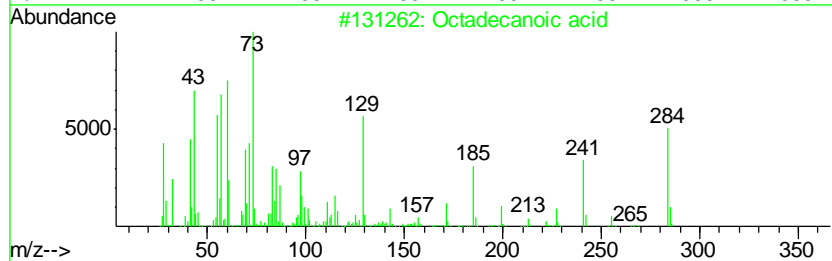
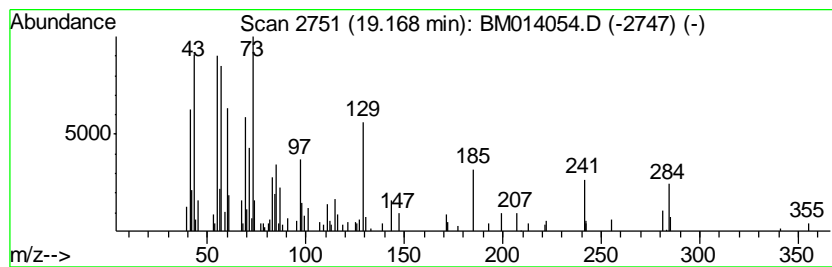
Quant Method : Z:\HPCHEM1\BNA M\METHODS\SOM-EPA-BM013118.M
 Quant Title : SVOA CALIBRATION

TIC Library : C:\DATABASE\NIST11.L
 TIC Integration Parameters: LSCINT.P

 Peak Number 2 Octadecanoic acid Concentration Rank 4

R.T.	EstConc	Area	Relative to ISTD	R.T.
19.17	2.03 ng/ul	200247	Chrysene-d12	21.18

Hit#	of	Tentative ID	MW	MolForm	CAS#	Qual
1	5	Octadecanoic acid	284	C18H36O2	000057-11-4	97
2		Octadecanoic acid	284	C18H36O2	000057-11-4	95
3		Octadecanoic acid	284	C18H36O2	000057-11-4	95
4		Octadecanoic acid	284	C18H36O2	000057-11-4	93
5		Pentadecanoic acid	242	C15H30O2	001002-84-2	60



Data Path : Z:\HPCHEM1\BNA M\DATA\BM013118\
 Data File : BM014054.D
 Acq On : 01 Feb 2018 03:28
 Operator : SJ/JU
 Sample : J1314-15
 Misc :
 ALS Vial : 20 Sample Multiplier: 1

Instrument :
 BNA_M
 ClientSampleID :
 F6C52

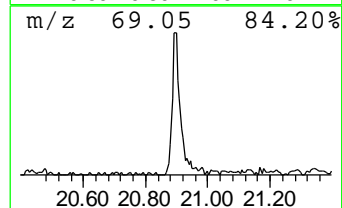
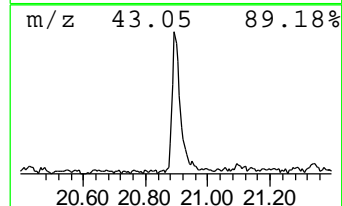
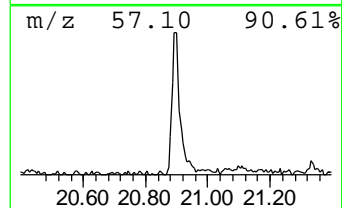
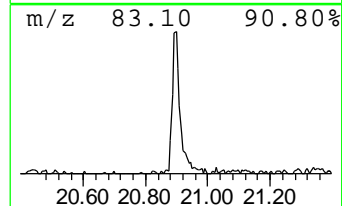
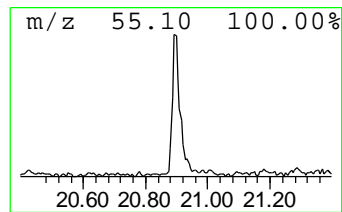
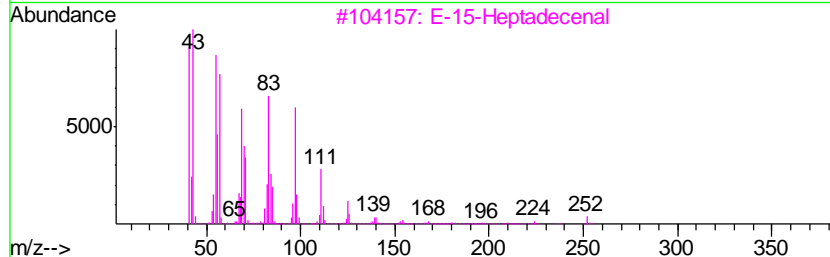
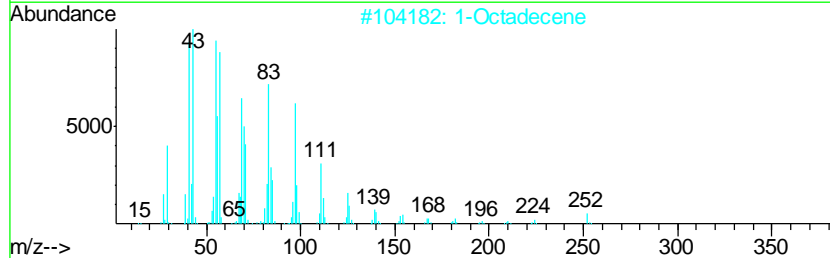
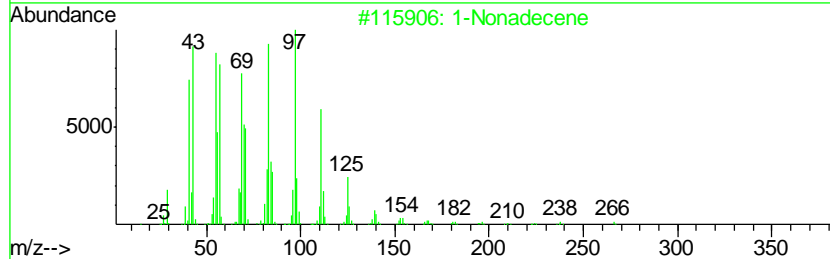
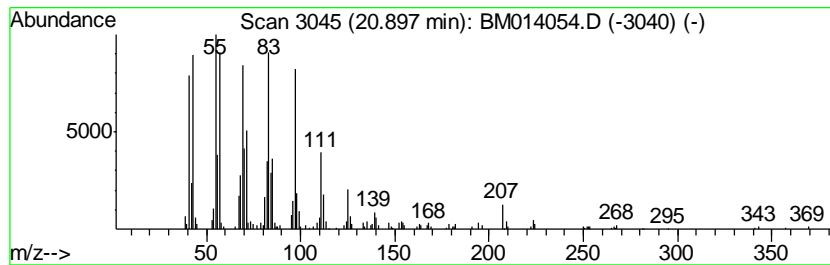
Quant Method : Z:\HPCHEM1\BNA M\METHODS\SOM-EPA-BM013118.M
 Quant Title : SVOA CALIBRATION

TIC Library : C:\DATABASE\NIST11.L
 TIC Integration Parameters: LSCINT.P

 Peak Number 3 (DEL) Alkane: Cyclic20.90 Concentration Rank 1

R.T.	EstConc	Area	Relative to ISTD	R.T.
20.90	6.43 ng/ul	634777	Chrysene-d12	21.18

Hit#	of	Tentative ID	MW	MolForm	CAS#	Qual
1	5	1-Nonadecene	266	C19H38	018435-45-5	96
2		1-Octadecene	252	C18H36	000112-88-9	96
3		E-15-Heptadecenal	252	C17H32O	1000130-97-9	95
4		1-Heneicosanol	312	C21H44O	015594-90-8	95
5		n-Nonadecanol-1	284	C19H40O	001454-84-8	94



Data Path : Z:\HPCHEM1\BNA M\DATA\BM013118\
 Data File : BM014054.D
 Acq On : 01 Feb 2018 03:28
 Operator : SJ/JU
 Sample : J1314-15
 Misc :
 ALS Vial : 20 Sample Multiplier: 1

Instrument :
 BNA_M
 ClientSampled :
 F6C52

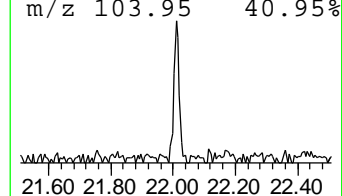
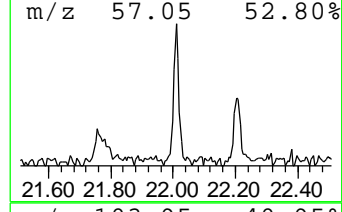
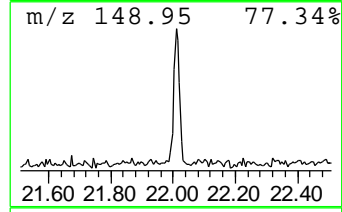
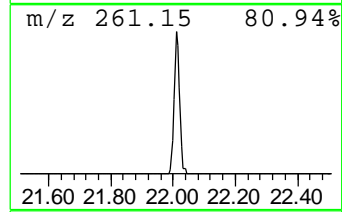
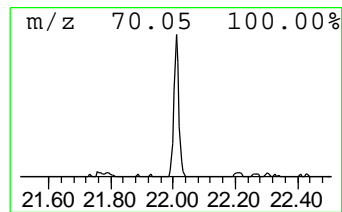
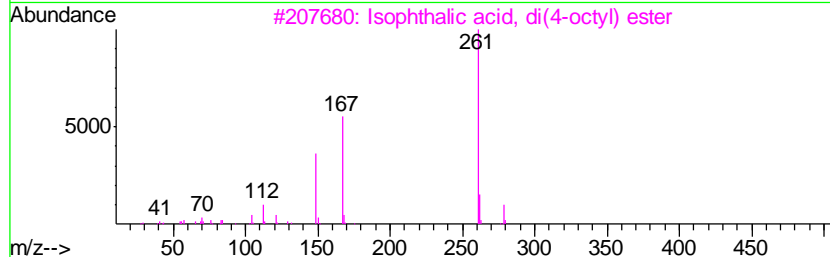
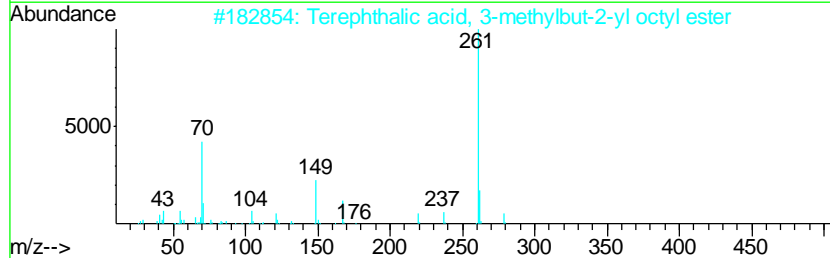
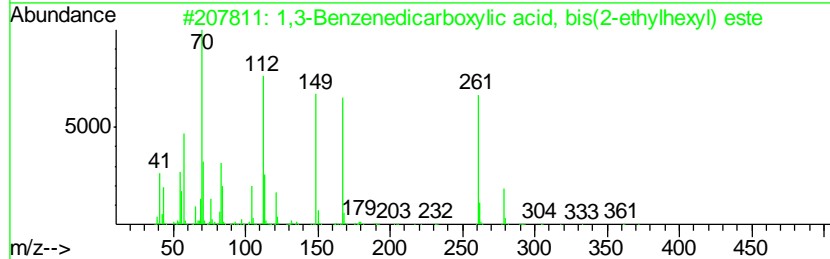
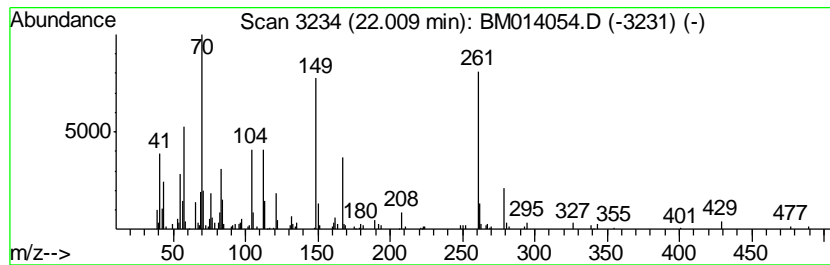
Quant Method : Z:\HPCHEM1\BNA M\METHODS\SOM-EPA-BM013118.M
 Quant Title : SVOA CALIBRATION

TIC Library : C:\DATABASE\NIST11.L
 TIC Integration Parameters: LSCINT.P

 Peak Number 4 1,3-Benzenedicarboxylic aci... Concentration Rank 3

R.T.	EstConc	Area	Relative to ISTD	R.T.
22.01	2.43 ng/ul	240343	Chrysene-d12	21.18

Hit#	of	Tentative ID	MW	MolForm	CAS#	Qual
1	5	1,3-Benzenedicarboxylic acid, bi...	390	C24H38O4	000137-89-3	68
2		Terephthalic acid, 3-methylbut-2...	348	C21H32O4	1000356-27-6	59
3		Isophthalic acid, di(4-octyl) ester	390	C24H38O4	1000344-04-3	52
4		Terephthalic acid, di(4-octyl) e...	390	C24H38O4	1000323-74-2	38
5		1,4-Benzenedicarboxylic acid, bi...	390	C24H38O4	006422-86-2	38



Data Path : Z:\HPCHEM1\BNA_M\DATA\BM013118\
Data File : BM014054.D
Acq On : 01 Feb 2018 03:28
Operator : SJ/JU
Sample : J1314-15
Misc :
ALS Vial : 20 Sample Multiplier: 1

Instrument :
BNA_M
ClientSampleId :
F6C52

Quant Method : Z:\HPCHEM1\BNA_M\METHODS\SOM-EPA-BM013118.M
Quant Title : SVOA CALIBRATION

TIC Library : C:\DATABASE\NIST11.L
TIC Integration Parameters: LSCINT.P

TIC Top Hit name	RT	EstConc	Units	Response	--Internal Standard--			
					#	RT	Resp	Conc
n-Hexadecanoic acid	17.88	4.6	ng/ul	390662	4	16.97	1687130	20.0
Octadecanoic acid	19.17	2.0	ng/ul	200247	5	21.18	1974650	20.0
(DEL) Alkane: Cyc...	20.90	6.4	ng/ul	634777	5	21.18	1974650	20.0
1,3-Benzenedicarb...	22.01	2.4	ng/ul	240343	5	21.18	1974650	20.0