

Data Path : Z:\HPCHEM1\BNA_M\DATA\BM013118\
 Data File : BM014064.D
 Acq On : 01 Feb 2018 09:26
 Operator : SJ/JU
 Sample : J1316-04
 Misc :
 ALS Vial : 30 Sample Multiplier: 1

Instrument :
 BNA_M
 ClientSampleId :
 F6C88

Integration Parameters: LSCINT.P

Integrator: RTE
 Smoothing : OFF
 Sampling : 1
 Start Thrs: 0.2
 Stop Thrs : 0

Filtering: 5
 Min Area: 1 % of largest Peak
 Max Peaks: 100
 Peak Location: TOP

If leading or trailing edge < 100 prefer < Baseline drop else tangent >
 Peak separation: 5

Method : Z:\HPCHEM1\BNA_M\METHODS\SOM-EPA-BM013118.M
 Title : SVOA CALIBRATION

Signal : TIC

peak #	R.T. min	first scan	max scan	last scan	PK TY	peak height	corr. area	corr. % max.	% of total
1	3.122	19	23	27	rBV3	28541	37605	1.15%	0.102%
2	6.746	634	639	652	rBV	468342	862040	26.38%	2.330%
3	6.904	661	666	674	rBV	363364	573023	17.54%	1.549%
4	7.093	692	698	706	rBV	548669	890596	27.26%	2.407%
5	7.557	771	777	788	rBV	485410	818543	25.05%	2.212%
6	8.275	892	899	917	rBV2	597644	1080493	33.07%	2.920%
7	8.716	967	974	984	rBV	530652	906519	27.74%	2.450%
8	9.104	1035	1040	1046	rVB3	25324	39143	1.20%	0.106%
9	9.434	1088	1096	1114	rVB2	434472	838784	25.67%	2.267%
10	9.969	1180	1187	1202	rBV	586006	1157860	35.43%	3.129%
11	10.328	1242	1248	1259	rBV	633996	1088044	33.30%	2.940%
12	10.486	1268	1275	1289	rBV	464700	995294	30.46%	2.690%
13	13.027	1701	1707	1714	rVB6	18937	33964	1.04%	0.092%
14	13.633	1803	1810	1815	rBV	1224154	1715961	52.51%	4.637%
15	13.680	1815	1818	1826	rVB2	241154	384815	11.78%	1.040%
16	13.904	1847	1856	1866	rBV	1342804	2020535	61.84%	5.460%
17	14.122	1886	1893	1901	rBV2	59324	90855	2.78%	0.246%
18	14.216	1901	1909	1919	rBV2	934228	1458462	44.63%	3.941%
19	14.457	1943	1950	1969	rBV	251090	681402	20.85%	1.841%
20	14.739	1993	1998	2003	rVB5	21398	32869	1.01%	0.089%
21	15.080	2052	2056	2062	rVB	77241	103559	3.17%	0.280%
22	15.216	2073	2079	2087	rBV	1692770	2413412	73.86%	6.522%
23	15.363	2097	2104	2116	rBV	405200	708431	21.68%	1.914%
24	15.463	2116	2121	2124	rBV4	30265	50710	1.55%	0.137%
25	15.945	2198	2203	2211	rBV2	72548	115044	3.52%	0.311%
26	16.739	2333	2338	2341	rBV3	36767	51322	1.57%	0.139%
27	16.968	2372	2377	2385	rBV2	1252023	1753005	53.65%	4.737%
28	17.068	2387	2394	2408	rVV	1803631	2659832	81.40%	7.188%
29	17.880	2526	2532	2544	rBV	591596	955652	29.25%	2.583%
30	19.021	2721	2726	2729	rBV4	70798	116754	3.57%	0.316%
31	19.168	2746	2751	2761	rBV	587981	913104	27.94%	2.468%
32	19.256	2765	2766	2774	rVB4	35964	52199	1.60%	0.141%
33	19.374	2780	2786	2793	rBV	2244973	3051145	93.38%	8.245%
34	19.433	2793	2796	2799	rVB4	37391	43179	1.32%	0.117%

Data Path : Z:\HPCHEM1\BNA_M\DATA\BM013118\
Data File : BM014064.D
Acq On : 01 Feb 2018 09:26
Operator : SJ/JU
Sample : J1316-04
Misc :
ALS Vial : 30 Sample Multiplier: 1

Instrument :
BNA_M
ClientSampleId :
F6C88

Integration Parameters: LSCINT.P
Integrator: RTE
Smoothing : OFF Filtering: 5
Sampling : 1 Min Area: 1 % of largest Peak
Start Thrs: 0.2 Max Peaks: 100
Stop Thrs : 0 Peak Location: TOP

If leading or trailing edge < 100 prefer < Baseline drop else tangent >
Peak separation: 5

Method : Z:\HPCHEM1\BNA_M\METHODS\SOM-EPA-BM013118.M
Title : SVOA CALIBRATION

35	20.315	2944	2946	2954	rVB9	32631	45911	1.41%	0.124%
36	20.892	3040	3044	3054	rBV	464016	768424	23.52%	2.077%
37	21.174	3087	3092	3100	rBV	1656816	2232172	68.31%	6.032%
38	23.221	3433	3440	3450	rVB	1780872	3267613	100.00%	8.830%
39	23.356	3457	3463	3472	rVB	1025320	1996502	61.10%	5.395%

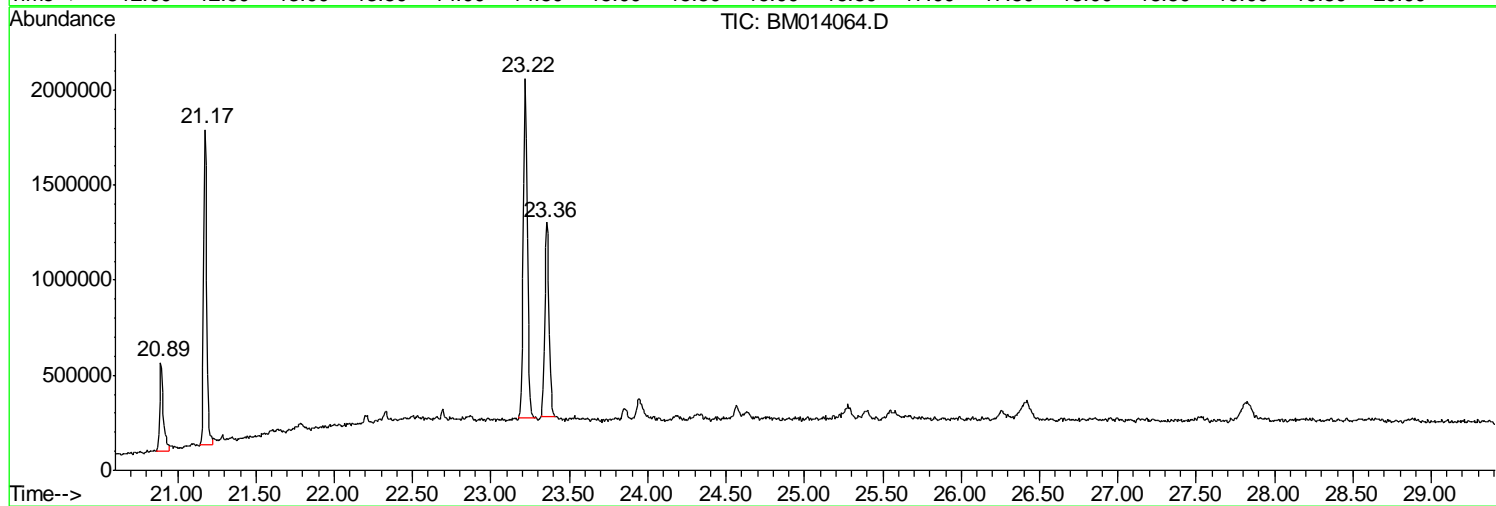
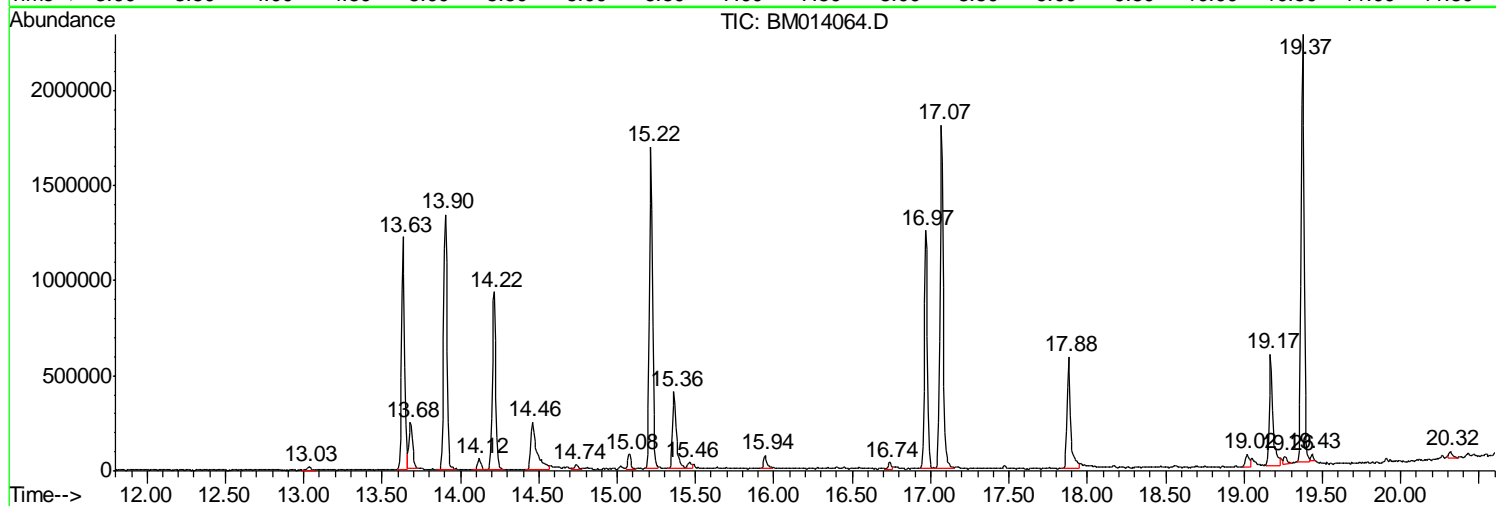
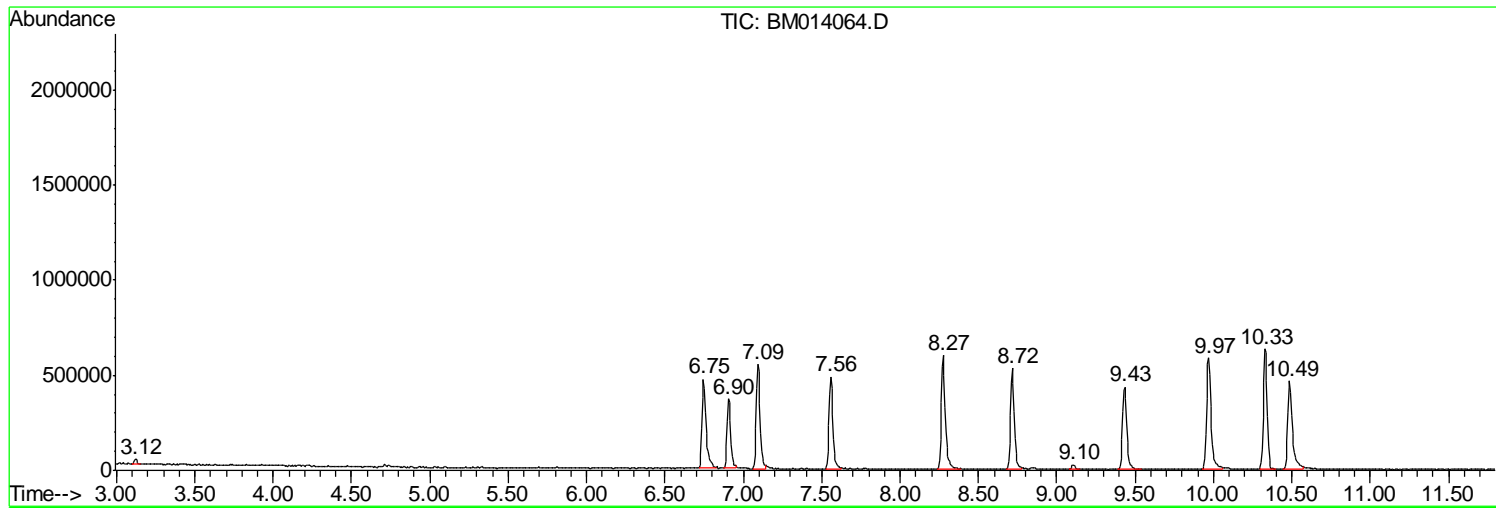
Sum of corrected areas: 37004777

Data Path : Z:\HPCHEM1\BNA_M\DATA\BM013118\
Data File : BM014064.D
Acq On : 01 Feb 2018 09:26
Operator : SJ/JU
Sample : J1316-04
Misc :
ALS Vial : 30 Sample Multiplier: 1

Instrument :
BNA_M
ClientSampled :
F6C88

Quant Method : Z:\HPCHEM1\BNA_M\METHODS\SOM-EPA-BM013118.M
Quant Title : SVOA CALIBRATION

TIC Library : C:\DATABASE\NIST11.L
TIC Integration Parameters: LSCINT.P



Data Path : Z:\HPCHEM1\BNA_M\DATA\BM013118\
 Data File : BM014064.D
 Acq On : 01 Feb 2018 09:26
 Operator : SJ/JU
 Sample : J1316-04
 Misc :
 ALS Vial : 30 Sample Multiplier: 1

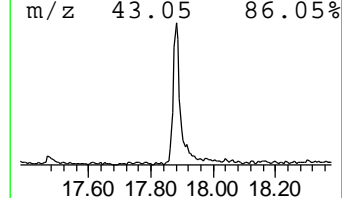
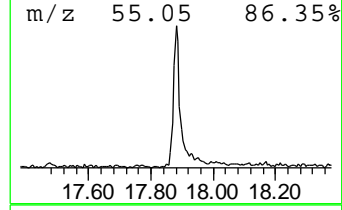
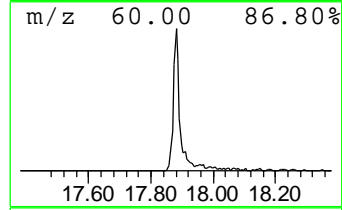
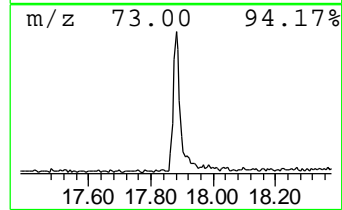
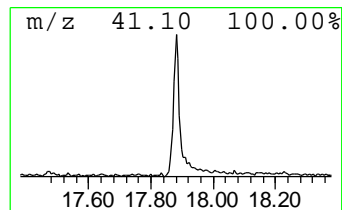
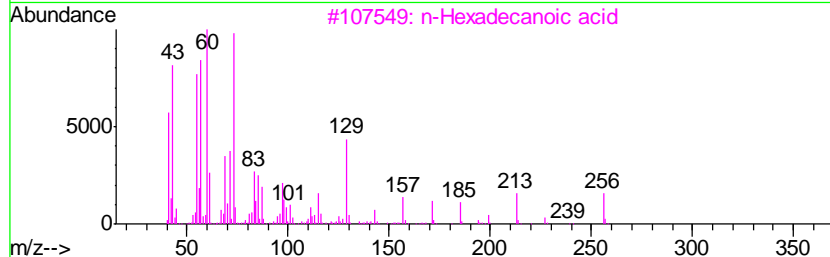
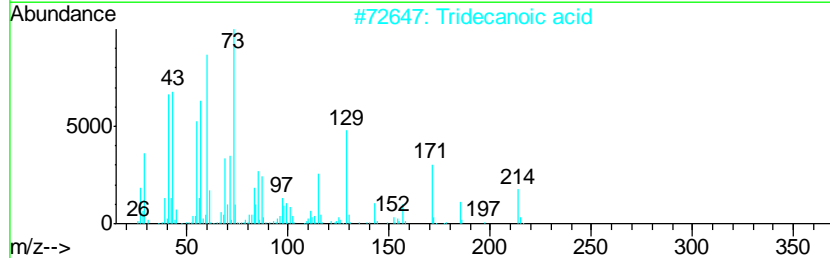
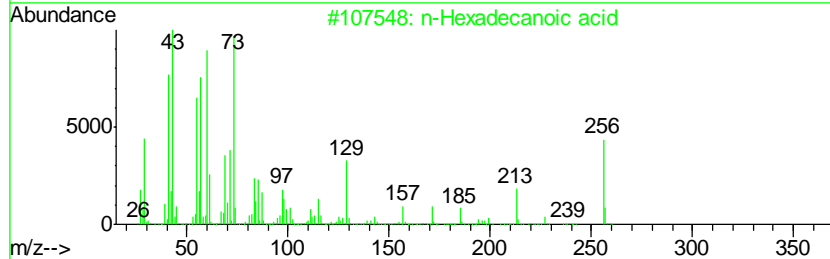
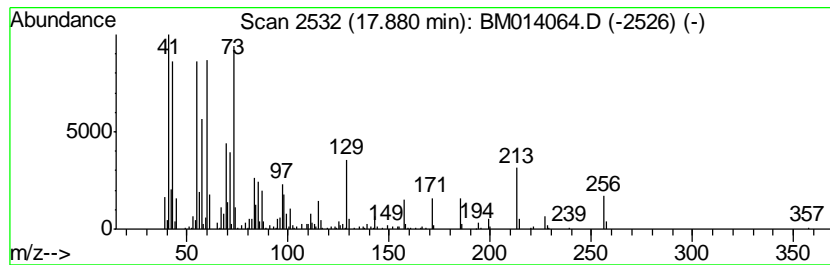
Instrument :
 BNA_M
 ClientSampleID :
 F6C88

Quant Method : Z:\HPCHEM1\BNA_M\METHODS\SOM-EPA-BM013118.M
 Quant Title : SVOA CALIBRATION

TIC Library : C:\DATABASE\NIST11.L
 TIC Integration Parameters: LSCINT.P

 Peak Number 1 n-Hexadecanoic acid Concentration Rank 1

R.T.	EstConc	Area	Relative to ISTD	R.T.		
17.88	10.90 ng/ul	955652	Phenanthrene-d10	16.97		
Hit# of	5	Tentative ID	MW	MolForm	CAS#	Qual
1		n-Hexadecanoic acid	256	C16H32O2	000057-10-3	96
2		Tridecanoic acid	214	C13H26O2	000638-53-9	96
3		n-Hexadecanoic acid	256	C16H32O2	000057-10-3	95
4		Tridecanoic acid	214	C13H26O2	000638-53-9	86
5		Undecanoic acid	186	C11H22O2	000112-37-8	81



Data Path : Z:\HPCHEM1\BNA_M\DATA\BM013118\
 Data File : BM014064.D
 Acq On : 01 Feb 2018 09:26
 Operator : SJ/JU
 Sample : J1316-04
 Misc :
 ALS Vial : 30 Sample Multiplier: 1

Instrument :
 BNA_M
 ClientSampleID :
 F6C88

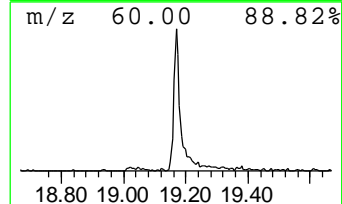
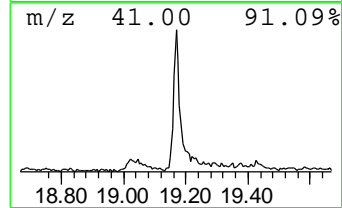
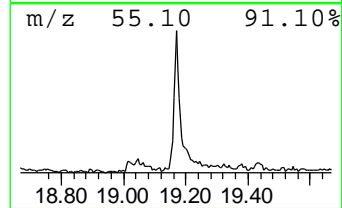
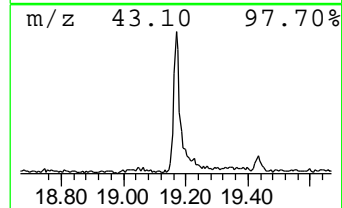
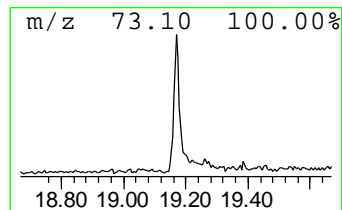
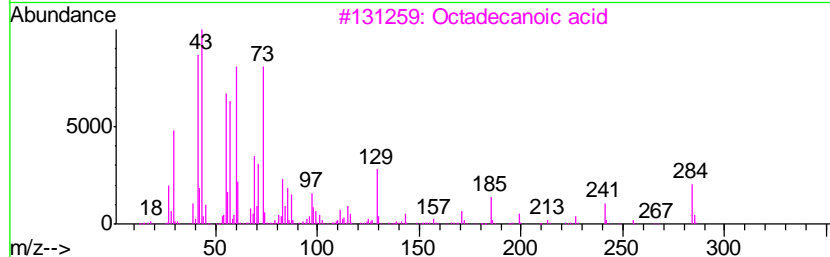
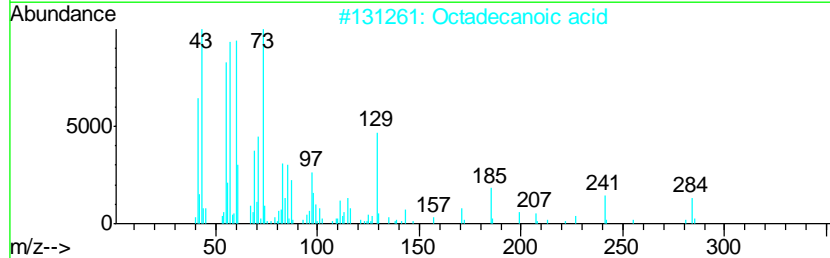
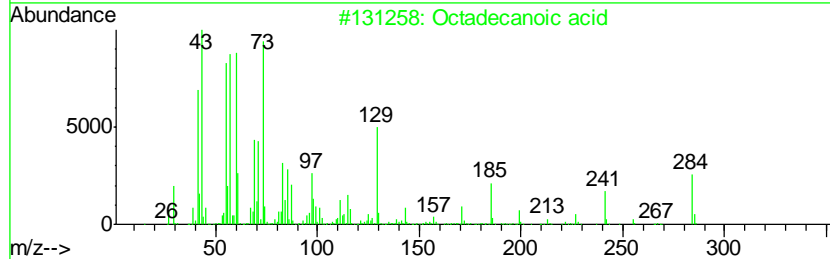
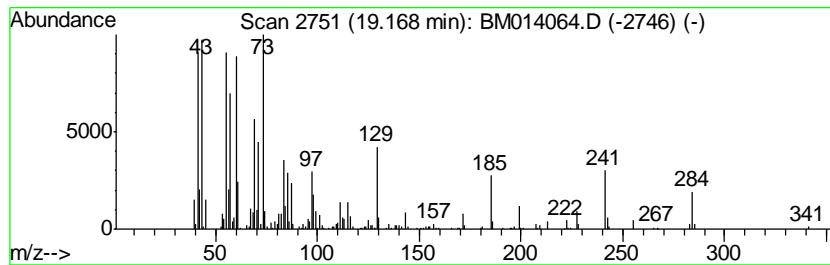
Quant Method : Z:\HPCHEM1\BNA_M\METHODS\SOM-EPA-BM013118.M
 Quant Title : SVOA CALIBRATION

TIC Library : C:\DATABASE\NIST11.L
 TIC Integration Parameters: LSCINT.P

 Peak Number 2 Octadecanoic acid Concentration Rank 2

R.T.	EstConc	Area	Relative to ISTD	R.T.
19.17	8.18 ng/ul	913104	Chrysene-d12	21.17

Hit#	of	Tentative ID	MW	MolForm	CAS#	Qual
1	5	Octadecanoic acid	284	C18H36O2	000057-11-4	99
2		Octadecanoic acid	284	C18H36O2	000057-11-4	99
3		Octadecanoic acid	284	C18H36O2	000057-11-4	95
4		Pentadecanoic acid	242	C15H30O2	001002-84-2	93
5		Octadecanoic acid	284	C18H36O2	000057-11-4	93



Data Path : Z:\HPCHEM1\BNA_M\DATA\BM013118\
 Data File : BM014064.D
 Acq On : 01 Feb 2018 09:26
 Operator : SJ/JU
 Sample : J1316-04
 Misc :
 ALS Vial : 30 Sample Multiplier: 1

Instrument :
 BNA_M
 ClientSampleID :
 F6C88

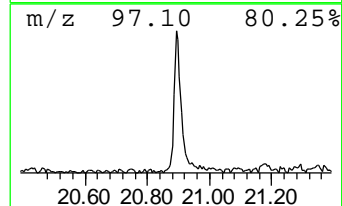
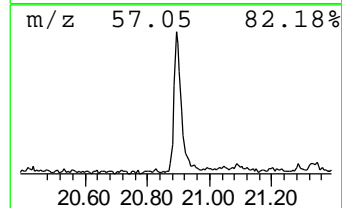
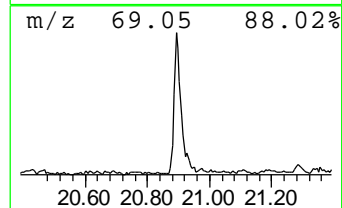
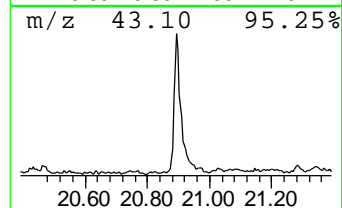
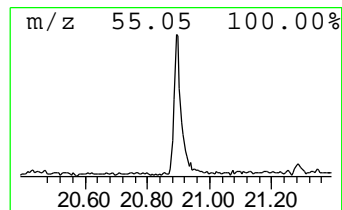
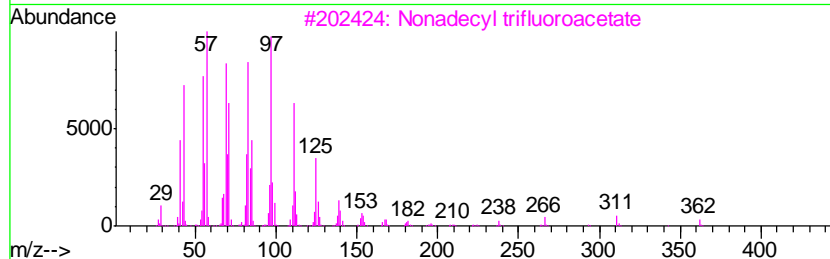
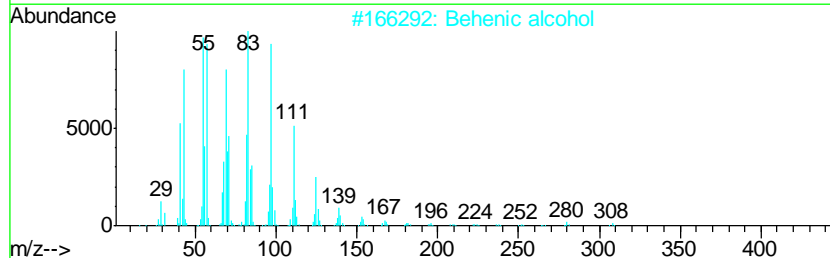
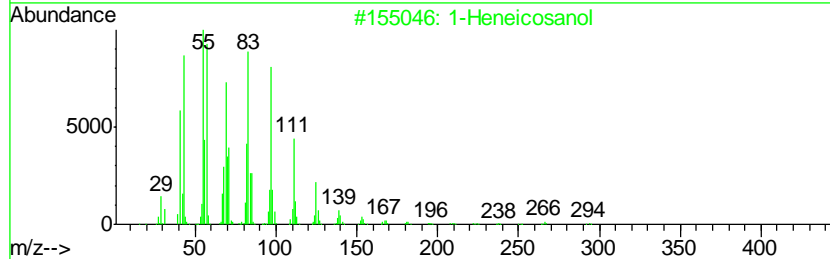
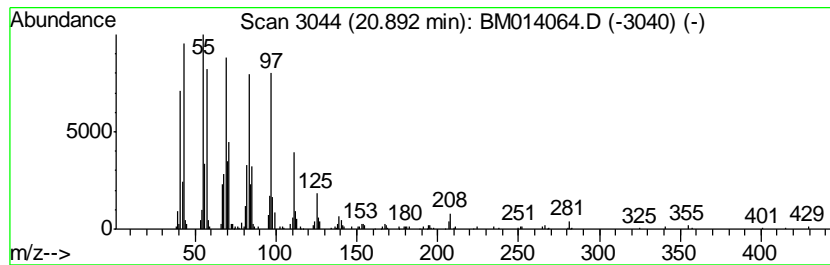
Quant Method : Z:\HPCHEM1\BNA_M\METHODS\SOM-EPA-BM013118.M
 Quant Title : SVOA CALIBRATION

TIC Library : C:\DATABASE\NIST11.L
 TIC Integration Parameters: LSCINT.P

 Peak Number 3 1-Heneicosanol Concentration Rank 3

R.T.	EstConc	Area	Relative to ISTD	R.T.
20.89	6.88 ng/ul	768424	Chrysene-d12	21.17

Hit#	of	Tentative ID	MW	MolForm	CAS#	Qual
1	5	1-Heneicosanol	312	C21H44O	015594-90-8	93
2		Behenic alcohol	326	C22H46O	000661-19-8	91
3		Nonadecyl trifluoroacetate	380	C21H39F3O2	1000351-76-3	91
4		Heptafluorobutyric acid, pentade...	424	C19H31F7O2	959261-23-5	90
5		n-Tetracosanol-1	354	C24H50O	000506-51-4	89



Data Path : Z:\HPCHEM1\BNA_M\DATA\BM013118\
Data File : BM014064.D
Acq On : 01 Feb 2018 09:26
Operator : SJ/JU
Sample : J1316-04
Misc :
ALS Vial : 30 Sample Multiplier: 1

Instrument :
BNA_M
ClientSampleId :
F6C88

Quant Method : Z:\HPCHEM1\BNA_M\METHODS\SOM-EPA-BM013118.M
Quant Title : SVOA CALIBRATION

TIC Library : C:\DATABASE\NIST11.L
TIC Integration Parameters: LSCINT.P

TIC Top Hit name	RT	EstConc	Units	Response	--Internal Standard--			
					#	RT	Resp	Conc
n-Hexadecanoic acid	17.88	10.9	ng/ul	955652	4	16.97	1753010	20.0
Octadecanoic acid	19.17	8.2	ng/ul	913104	5	21.17	2232170	20.0
1-Heneicosanol	20.89	6.9	ng/ul	768424	5	21.17	2232170	20.0