

Data Path : Z:\HPCHEM1\BNA\_M\DATA\BM013118\  
 Data File : BM014068.D  
 Acq On : 01 Feb 2018 11:49  
 Operator : SJ/JU  
 Sample : J1316-09  
 Misc :  
 ALS Vial : 34 Sample Multiplier: 1

Instrument :  
 BNA\_M  
 ClientSampled :  
 F6C92

## Integration Parameters: LSCINT.P

Integrator: RTE  
 Smoothing : OFF  
 Sampling : 1  
 Start Thrs: 0.2  
 Stop Thrs : 0

Filtering: 5  
 Min Area: 1 % of largest Peak  
 Max Peaks: 100  
 Peak Location: TOP

If leading or trailing edge < 100 prefer < Baseline drop else tangent >  
 Peak separation: 5

Method : Z:\HPCHEM1\BNA\_M\METHODS\SOM-EPA-BM013118.M  
 Title : SVOA CALIBRATION

Signal : TIC

peak #	R.T. min	first scan	max scan	last scan	PK TY	peak height	corr. area	corr. % max.	% of total
1	3.128	20	24	28	rBV	25492	35854	1.25%	0.113%
2	6.745	633	639	652	rBV	389514	731289	25.59%	2.297%
3	6.904	658	666	679	rBV	312679	519016	18.16%	1.630%
4	7.092	691	698	715	rBV	471921	813575	28.47%	2.555%
5	7.557	771	777	789	rBV2	470665	796202	27.86%	2.501%
6	8.275	893	899	914	rBV2	507414	940065	32.90%	2.952%
7	8.716	967	974	989	rBV	472235	829390	29.03%	2.605%
8	9.110	1037	1041	1048	rVB3	21301	35679	1.25%	0.112%
9	9.433	1089	1096	1109	rBV2	379055	719552	25.18%	2.260%
10	9.969	1180	1187	1200	rBV2	516237	1006225	35.21%	3.160%
11	10.327	1240	1248	1257	rBV	638918	1065181	37.28%	3.345%
12	10.486	1268	1275	1291	rBV	416429	878840	30.76%	2.760%
13	13.033	1703	1708	1717	rVB5	20263	34402	1.20%	0.108%
14	13.633	1802	1810	1815	rBV	1009082	1494301	52.30%	4.693%
15	13.680	1815	1818	1826	rVB	178560	288219	10.09%	0.905%
16	13.904	1845	1856	1870	rBV	1237468	1837634	64.31%	5.771%
17	14.121	1887	1893	1899	rBV2	61494	90455	3.17%	0.284%
18	14.210	1901	1908	1918	rBV2	866084	1404261	49.14%	4.410%
19	14.462	1945	1951	1961	rBV3	168357	433484	15.17%	1.361%
20	15.074	2051	2055	2060	rBV	78125	94601	3.31%	0.297%
21	15.215	2072	2079	2087	rBV	1414116	2178735	76.25%	6.842%
22	15.362	2099	2104	2116	rBV	272817	500727	17.52%	1.573%
23	15.462	2116	2121	2129	rVB9	27499	65228	2.28%	0.205%
24	15.939	2198	2202	2211	rBV2	58807	97205	3.40%	0.305%
25	16.733	2332	2337	2340	rBV4	20582	32665	1.14%	0.103%
26	16.968	2371	2377	2386	rBV2	1244782	1691728	59.21%	5.313%
27	17.068	2386	2394	2410	rVV2	1602650	2380158	83.30%	7.475%
28	17.880	2525	2532	2544	rBV	206814	396606	13.88%	1.246%
29	19.015	2721	2725	2729	rBV5	31561	47194	1.65%	0.148%
30	19.168	2746	2751	2764	rBV3	149395	294979	10.32%	0.926%
31	19.374	2780	2786	2795	rBV	1959738	2756188	96.46%	8.656%
32	20.891	3039	3044	3054	rBV	322684	541851	18.96%	1.702%
33	21.174	3087	3092	3100	rBV	1459754	2047806	71.67%	6.431%
34	23.215	3433	3439	3452	rVB2	1497542	2857391	100.00%	8.974%

Data Path : Z:\HPCHEM1\BNA\_M\DATA\BM013118\  
Data File : BM014068.D  
Acq On : 01 Feb 2018 11:49  
Operator : SJ/JU  
Sample : J1316-09  
Misc :  
ALS Vial : 34 Sample Multiplier: 1

Instrument :  
BNA\_M  
ClientSampleId :  
F6C92

Integration Parameters: LSCINT.P  
Integrator: RTE  
Smoothing : OFF Filtering: 5  
Sampling : 1 Min Area: 1 % of largest Peak  
Start Thrs: 0.2 Max Peaks: 100  
Stop Thrs : 0 Peak Location: TOP

If leading or trailing edge < 100 prefer < Baseline drop else tangent >  
Peak separation: 5

Method : Z:\HPCHEM1\BNA\_M\METHODS\SOM-EPA-BM013118.M  
Title : SVOA CALIBRATION

35	23.356	3456	3463	3473	rBV	1006329	1904728	66.66%	5.982%
----	--------	------	------	------	-----	---------	---------	--------	--------

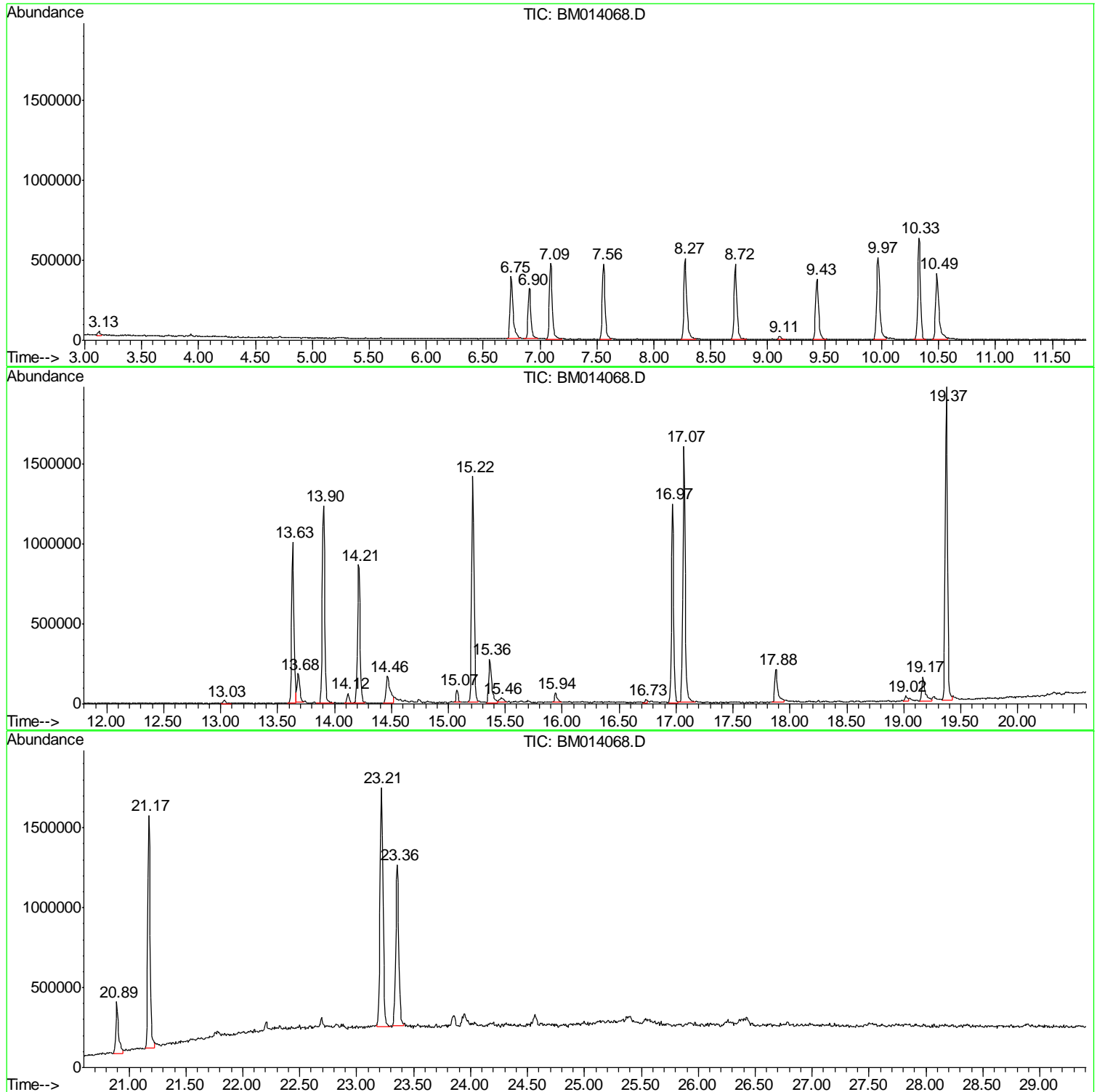
Sum of corrected areas: 31841414

Data Path : Z:\HPCHEM1\BNA\_M\DATA\BM013118\  
Data File : BM014068.D  
Acq On : 01 Feb 2018 11:49  
Operator : SJ/JU  
Sample : J1316-09  
Misc :  
ALS Vial : 34 Sample Multiplier: 1

Instrument :  
BNA\_M  
ClientSampled :  
F6C92

Quant Method : Z:\HPCHEM1\BNA\_M\METHODS\SOM-EPA-BM013118.M  
Quant Title : SVOA CALIBRATION

TIC Library : C:\DATABASE\NIST11.L  
TIC Integration Parameters: LSCINT.P



Data Path : Z:\HPCHEM1\BNA\_M\DATA\BM013118\  
 Data File : BM014068.D  
 Acq On : 01 Feb 2018 11:49  
 Operator : SJ/JU  
 Sample : J1316-09  
 Misc :  
 ALS Vial : 34 Sample Multiplier: 1

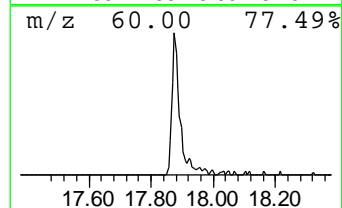
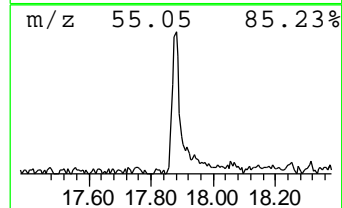
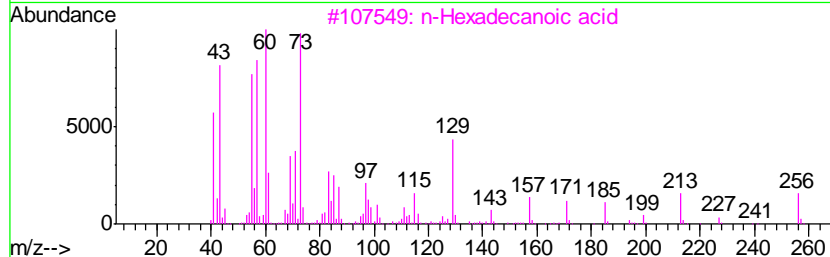
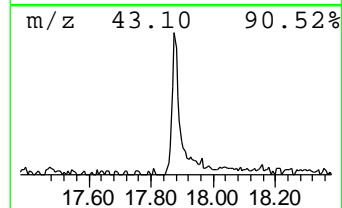
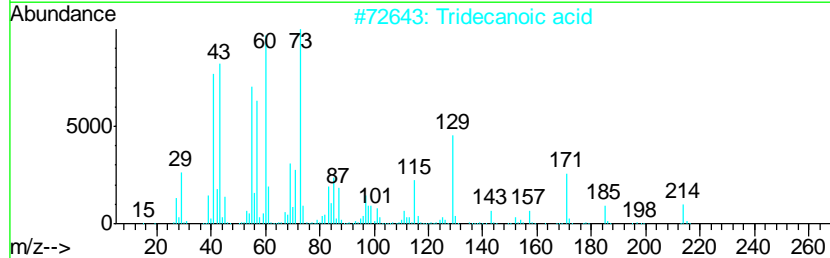
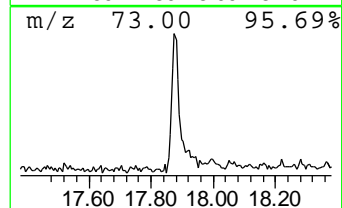
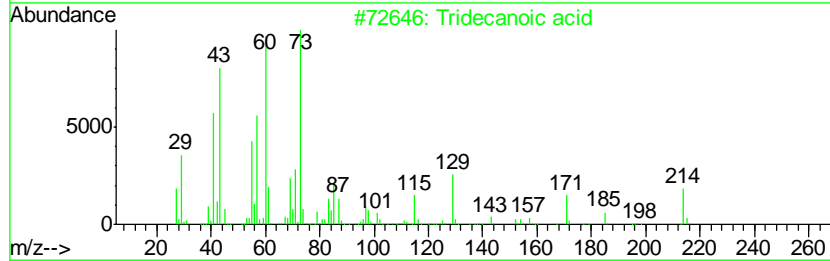
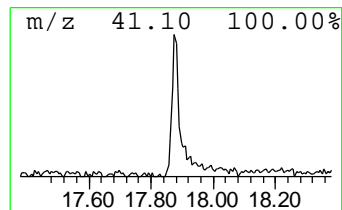
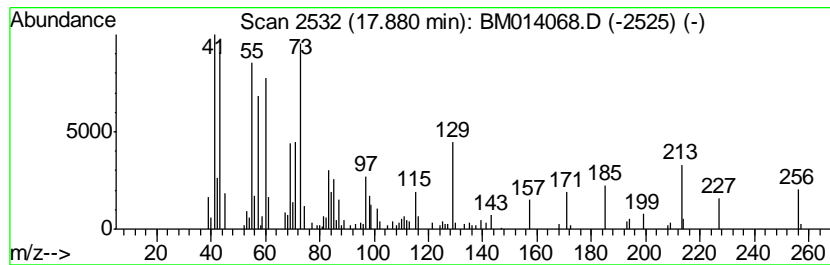
Instrument :  
 BNA\_M  
 ClientSampleID :  
 F6C92

Quant Method : Z:\HPCHEM1\BNA\_M\METHODS\SOM-EPA-BM013118.M  
 Quant Title : SVOA CALIBRATION

TIC Library : C:\DATABASE\NIST11.L  
 TIC Integration Parameters: LSCINT.P

\*\*\*\*\*  
 Peak Number 1 Tridecanoic acid Concentration Rank 2

R.T.	EstConc	Area	Relative to ISTD	R.T.		
17.88	4.69 ng/ul	396606	Phenanthrene-d10	16.97		
Hit# of	5	Tentative ID	MW	MolForm	CAS#	Qual
1		Tridecanoic acid	214	C13H26O2	000638-53-9	92
2		Tridecanoic acid	214	C13H26O2	000638-53-9	83
3		n-Hexadecanoic acid	256	C16H32O2	000057-10-3	76
4		Tridecanoic acid	214	C13H26O2	000638-53-9	64
5		Tetradecanoic acid	228	C14H28O2	000544-63-8	58



Data Path : Z:\HPCHEM1\BNA\_M\DATA\BM013118\  
 Data File : BM014068.D  
 Acq On : 01 Feb 2018 11:49  
 Operator : SJ/JU  
 Sample : J1316-09  
 Misc :  
 ALS Vial : 34 Sample Multiplier: 1

Instrument :  
 BNA\_M  
 ClientSampleID :  
 F6C92

Quant Method : Z:\HPCHEM1\BNA\_M\METHODS\SOM-EPA-BM013118.M  
 Quant Title : SVOA CALIBRATION

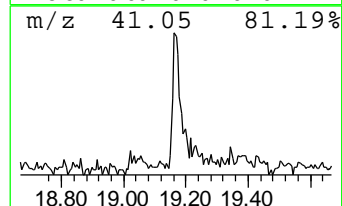
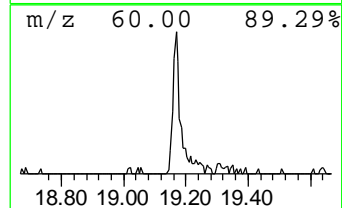
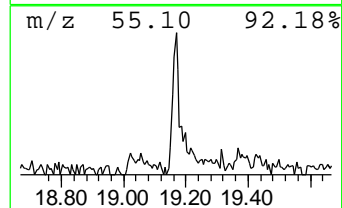
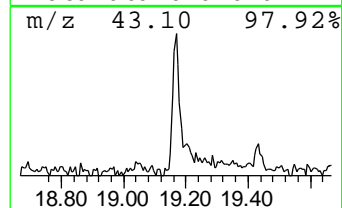
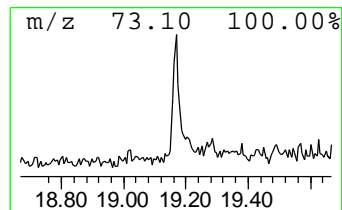
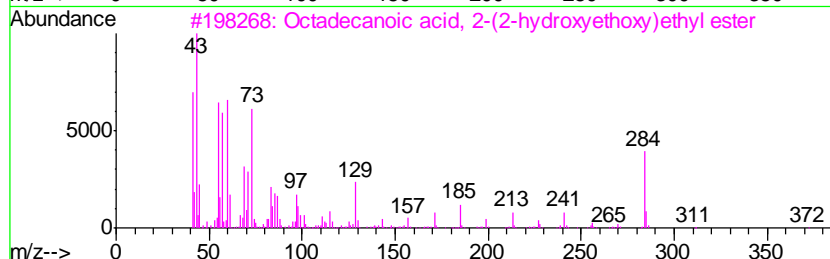
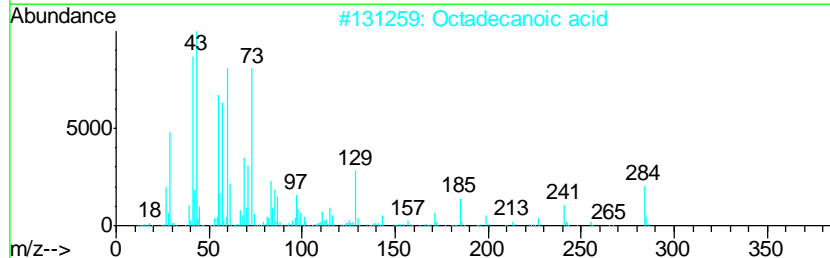
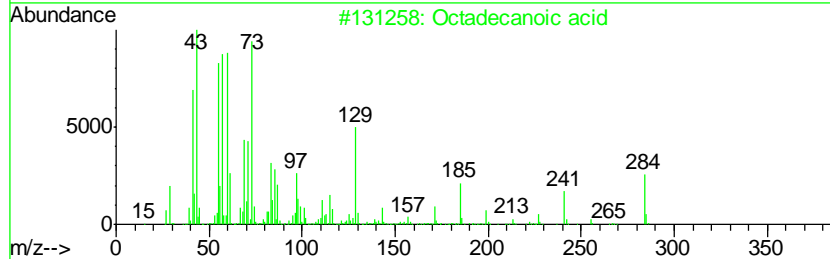
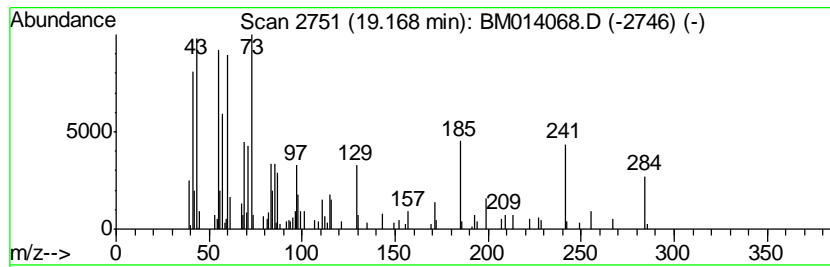
TIC Library : C:\DATABASE\NIST11.L  
 TIC Integration Parameters: LSCINT.P

\*\*\*\*\*  
 Peak Number 2 Octadecanoic acid Concentration Rank 3

R.T.	EstConc	Area	Relative to ISTD	R.T.
19.17	2.88 ng/ul	294979	Chrysene-d12	21.17

Hit#	of	Tentative ID	MW	MolForm	CAS#	Qual
1	5	Octadecanoic acid	284	C18H36O2	000057-11-4	86
2		Octadecanoic acid	284	C18H36O2	000057-11-4	64
3		Octadecanoic acid, 2-(2-hydroxye...	372	C22H44O4	000106-11-6	53
4		Octadecanoic acid	284	C18H36O2	000057-11-4	53
5		Octadecanoic acid	284	C18H36O2	000057-11-4	50



Data Path : Z:\HPCHEM1\BNA\_M\DATA\BM013118\  
 Data File : BM014068.D  
 Acq On : 01 Feb 2018 11:49  
 Operator : SJ/JU  
 Sample : J1316-09  
 Misc :  
 ALS Vial : 34 Sample Multiplier: 1

Instrument :  
 BNA\_M  
 ClientSampleId :  
 F6C92

Quant Method : Z:\HPCHEM1\BNA\_M\METHODS\SOM-EPA-BM013118.M  
 Quant Title : SVOA CALIBRATION

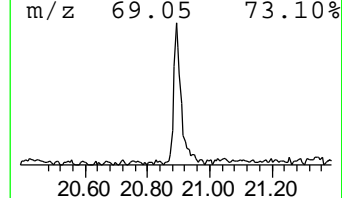
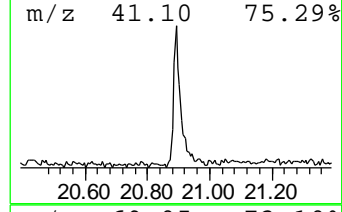
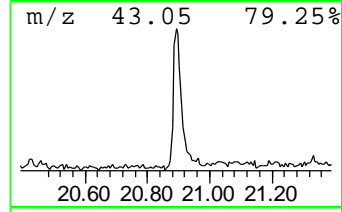
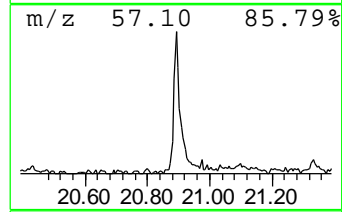
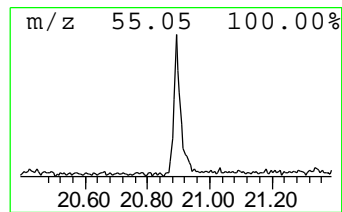
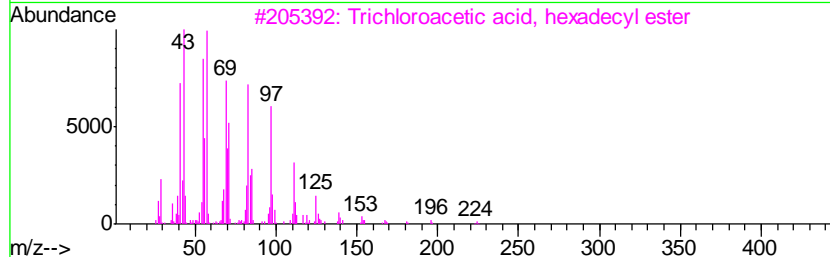
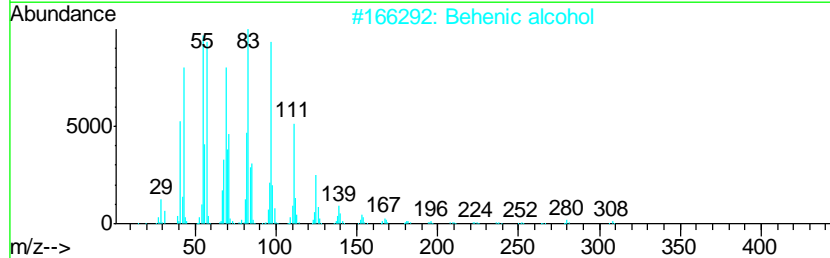
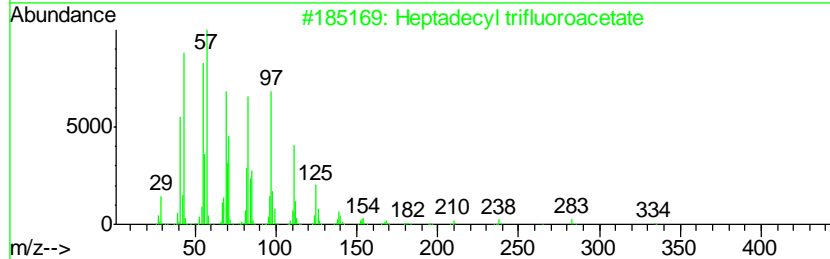
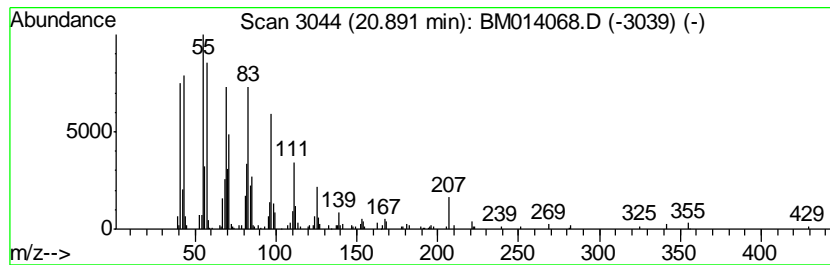
TIC Library : C:\DATABASE\NIST11.L  
 TIC Integration Parameters: LSCINT.P

\*\*\*\*\*  
 Peak Number 3 Heptadecyl trifluoroacetate Concentration Rank 1

R.T.	EstConc	Area	Relative to ISTD	R.T.
20.89	5.29 ng/ul	541851	Chrysene-d12	21.17

Hit#	of	Tentative ID	MW	MolForm	CAS#	Qual
1	5	Heptadecyl trifluoroacetate	352	C19H35F3O2	1000351-87-0	94
2		Behenic alcohol	326	C22H46O	000661-19-8	93
3		Trichloroacetic acid, hexadecyl ...	386	C18H33Cl3O2	074339-54-1	93
4		n-Tetracosanol-1	354	C24H50O	000506-51-4	93
5		Heptadecyl heptafluorobutyrate	452	C21H35F7O2	959085-66-6	93



Data Path : Z:\HPCHEM1\BNA\_M\DATA\BM013118\  
Data File : BM014068.D  
Acq On : 01 Feb 2018 11:49  
Operator : SJ/JU  
Sample : J1316-09  
Misc :  
ALS Vial : 34 Sample Multiplier: 1

Instrument :  
BNA\_M  
ClientSampleId :  
F6C92

Quant Method : Z:\HPCHEM1\BNA\_M\METHODS\SOM-EPA-BM013118.M  
Quant Title : SVOA CALIBRATION

TIC Library : C:\DATABASE\NIST11.L  
TIC Integration Parameters: LSCINT.P

TIC Top Hit name	RT	EstConc	Units	Response	--Internal Standard--			
					#	RT	Resp	Conc
Tridecanoic acid	17.88	4.7	ng/ul	396606	4	16.97	1691730	20.0
Octadecanoic acid	19.17	2.9	ng/ul	294979	5	21.17	2047810	20.0
Heptadecyl triflu...	20.89	5.3	ng/ul	541851	5	21.17	2047810	20.0