

Data Path : Z:\HPCHEM1\BNA M\DATA\BM020118\  
 Data File : BM014101.D  
 Acq On : 02 Feb 2018 07:43  
 Operator : SJ/JU  
 Sample : J1317-18  
 Misc :  
 ALS Vial : 31 Sample Multiplier: 1

Instrument :  
 BNA\_M  
 ClientSampleId :  
 F6D11

Quant Time: Feb 02 08:19:31 2018  
 Quant Method : Z:\HPCHEM1\BNA M\METHODS\SOM-EPA-BM013118.M  
 Quant Title : SVOA CALIBRATION  
 QLast Update : Fri Feb 02 03:15:28 2018  
 Response via : Initial Calibration

Internal Standards	R.T.	QIon	Response	Conc	Units	Dev(Min)
1) 1,4-Dichlorobenzene-d4	7.55	152	122954	20.00	ng/ul	0.00
18) Naphthalene-d8	10.33	136	528209	20.00	ng/ul	0.00
35) Acenaphthene-d10	14.21	164	335909	20.00	ng/ul	0.00
61) Phenanthrene-d10	16.97	188	831722	20.00	ng/ul	0.00
75) Chrysene-d12	21.17	240	944790	20.00	ng/ul	0.00
83) Perylene-d12	23.35	264	925278	20.00	ng/ul	0.00

## System Monitoring Compounds

3) 1,4-Dioxane-d8	3.12	96	17300	6.46	ng/uL	0.00
5) Phenol-d5	6.75	99	353534	38.26	ng/ul	0.00
7) Bis-(2-Chloroethyl)ether-d	6.90	67	220091	39.48	ng/ul	0.00
9) 2-Chlorophenol-d4	7.09	132	293696	40.13	ng/ul	0.00
13) 4-Methylphenol-d8	8.27	113	306330	39.59	ng/ul	0.00
19) Nitrobenzene-d5	8.71	128	153125	40.16	ng/ul	0.00
22) 2-Nitrophenol-d4	9.43	143	174740	41.41	ng/ul	0.00
26) 2,4-Dichlorophenol-d3	9.96	165	321294	36.20	ng/ul	0.00
29) 4-Chloroaniline-d4	10.48	131	393376	51.12	ng/ul	0.00
43) Dimethylphthalate-d6	13.63	166	1115894	40.03	ng/ul	0.00
46) Acenaphthylene-d8	13.90	160	1390556	41.11	ng/ul	0.00
51) 4-Nitrophenol-d4	14.45	143	119058	30.99	ng/ul	0.00
57) Fluorene-d10	15.21	176	990429	39.70	ng/ul	0.00
62) 4,6-Dinitro-2-methylphenol	15.36	200	156262	30.60	ng/ul	0.00
70) Anthracene-d10	17.06	188	1590785	39.39	ng/ul	0.00
76) Pyrene-d10	19.37	212	1857309	40.82	ng/ul	0.00
87) Benzo(a)pyrene-d12	23.21	264	1780496	39.21	ng/ul	0.00

## Target Compounds

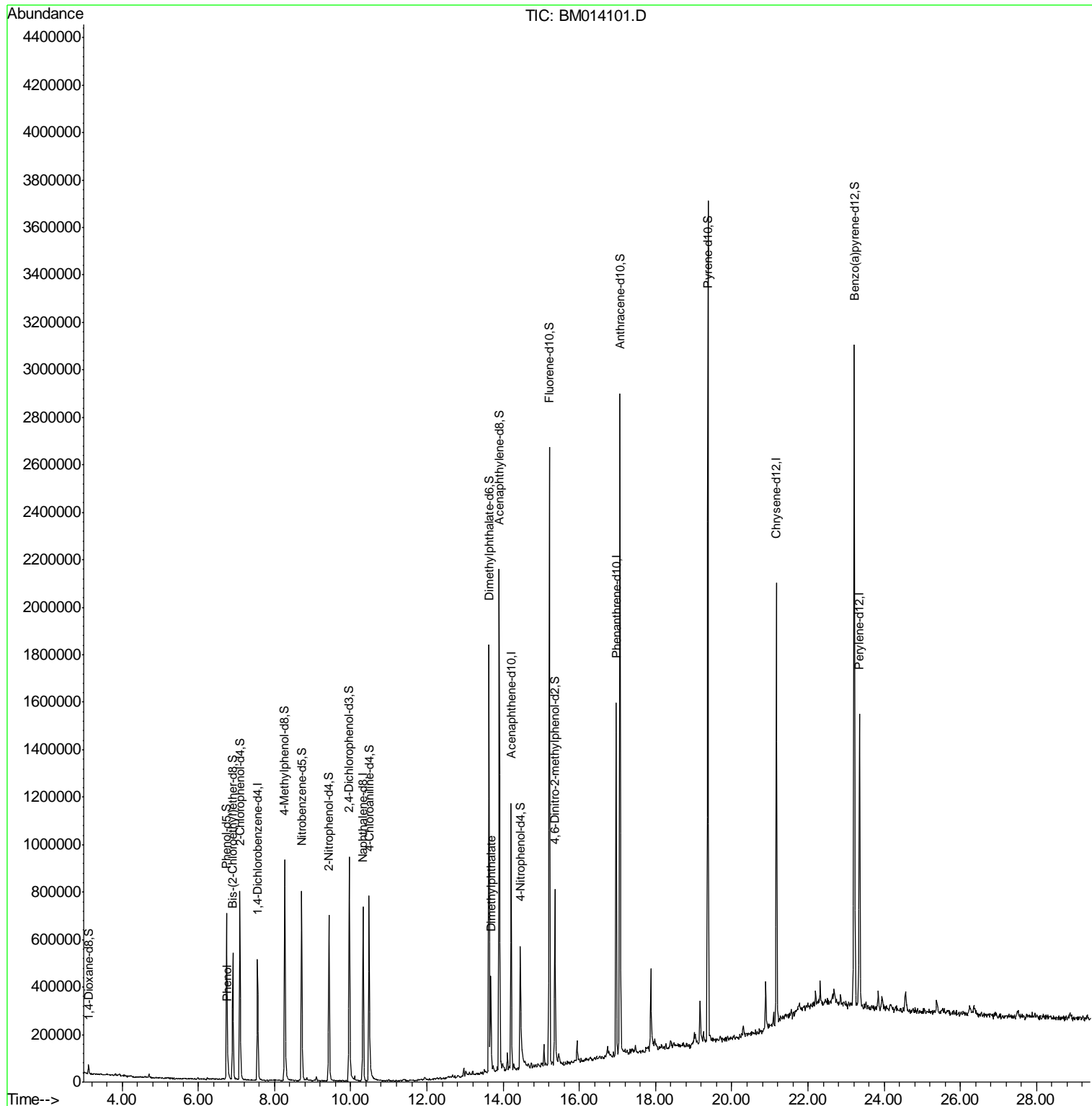
					Ovalue
6) Phenol	6.77	94	30093	3.255	ng/ul 93
44) Dimethylphthalate	13.68	163	232267	8.643	ng/ul 96

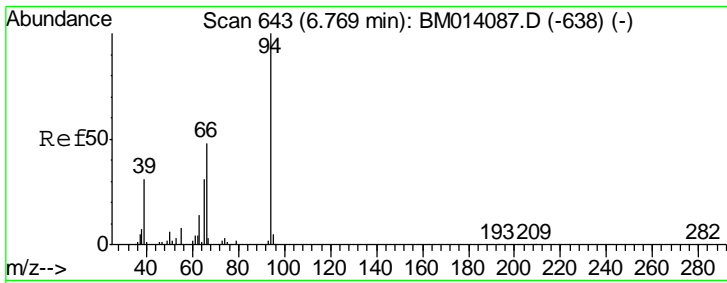
(#) = qualifier out of range (m) = manual integration (+) = signals summed

Data Path : Z:\HPCHEM1\BNA M\DATA\BM020118\  
 Data File : BM014101.D  
 Acq On : 02 Feb 2018 07:43  
 Operator : SJ/JU  
 Sample : J1317-18  
 Misc :  
 ALS Vial : 31 Sample Multiplier: 1

Instrument :  
 BNA\_M  
 ClientSampleId :  
 F6D11

Quant Time: Feb 02 08:19:31 2018  
 Quant Method : Z:\HPCHEM1\BNA M\METHODS\SOM-EPA-BM013118.M  
 Quant Title : SVOA CALIBRATION  
 QLast Update : Fri Feb 02 03:15:28 2018  
 Response via : Initial Calibration

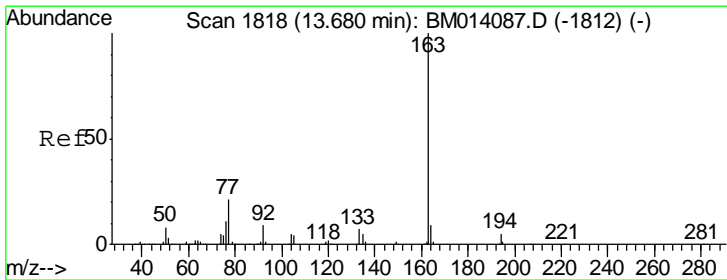
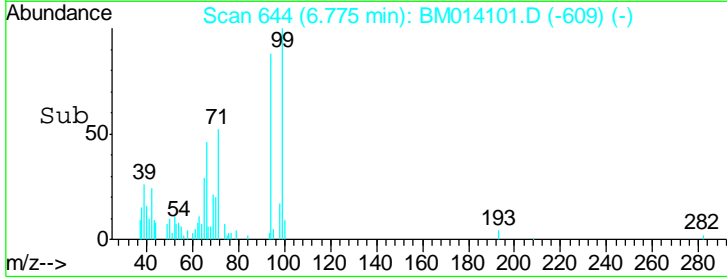
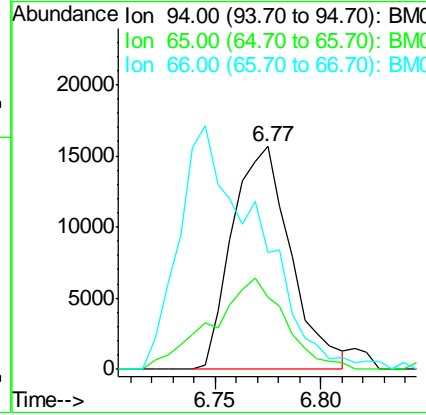
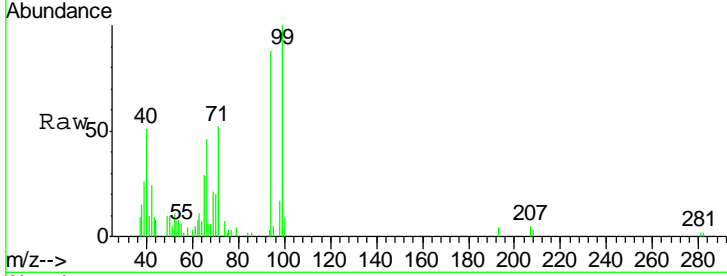




#6  
 Phenol  
 Concen: 3.255 ng/ul  
 RT: 6.77 min Scan# 644  
 Delta R.T. 0.01 min  
 Lab File: BM014101.D  
 Acq: 02 Feb 2018 07:43

Instrument :  
 BNA\_M  
 ClientSampled :  
 F6D11

Tgt Ion	Resp	Lower	Upper
94	30093		
65	32.6	28.2	42.4
66	52.3	47.2	70.8



#44  
 Dimethylphthalate  
 Concen: 8.643 ng/ul  
 RT: 13.68 min Scan# 1818  
 Delta R.T. -0.00 min  
 Lab File: BM014101.D  
 Acq: 02 Feb 2018 07:43

Tgt Ion	Resp	Lower	Upper
163	232267		
194	3.8	3.5	5.3
164	8.5	8.2	12.4

