

Data Path : U:\HPCHEM1\BNA M\DATA\BM020218\  
 Data File : BM014119.D  
 Acq On : 02 Feb 2018 18:35  
 Operator : SJ/JU  
 Sample : J1355-05  
 Misc :  
 ALS Vial : 14 Sample Multiplier: 1

Instrument :  
 BNA\_M  
 ClientSampled :  
 F6D30

Integration Parameters: LSCINT.P  
 Integrator: RTE  
 Smoothing : OFF  
 Sampling : 1  
 Start Thrs: 0.2  
 Stop Thrs : 0

Filtering: 5  
 Min Area: 1 % of largest Peak  
 Max Peaks: 100  
 Peak Location: TOP

If leading or trailing edge < 100 prefer < Baseline drop else tangent >  
 Peak separation: 5

Method : Z:\HPCHEM1\BNA M\METHODS\SOM-EPA-BM013118.M  
 Title : SVOA CALIBRATION

Signal : TIC

peak #	R.T. min	first scan	max scan	last scan	PK TY	peak height	corr. area	corr. % max.	% of total
1	6.745	633	639	654	rBV	461188	895171	25.31%	2.515%
2	6.904	659	666	680	rBV	369041	581190	16.43%	1.633%
3	7.087	691	697	711	rVB	519481	876287	24.77%	2.462%
4	7.557	770	777	786	rBV	348268	626864	17.72%	1.761%
5	8.269	891	898	913	rBV	597120	1080562	30.55%	3.036%
6	8.710	965	973	989	rBV	544354	954591	26.99%	2.682%
7	9.428	1088	1095	1106	rBV2	456865	848765	24.00%	2.385%
8	9.963	1179	1186	1207	rBV	613617	1200097	33.93%	3.372%
9	10.322	1240	1247	1255	rBV	486834	840730	23.77%	2.362%
10	10.481	1268	1274	1285	rBV	518060	1038942	29.37%	2.919%
11	11.663	1468	1475	1486	rBV2	55631	135961	3.84%	0.382%
12	13.627	1803	1809	1814	rBV	1275695	1848218	52.25%	5.193%
13	13.674	1814	1817	1828	rVB	326112	531937	15.04%	1.494%
14	13.898	1847	1855	1868	rBV	1458392	2150513	60.80%	6.042%
15	14.210	1901	1908	1918	rBV2	757516	1161529	32.84%	3.263%
16	14.451	1943	1949	1967	rBV	294330	737661	20.85%	2.072%
17	15.210	2070	2078	2089	rBV	1836142	2630957	74.38%	7.392%
18	15.357	2098	2103	2114	rBV	432619	761123	21.52%	2.138%
19	15.451	2116	2119	2125	rVB5	23429	39130	1.11%	0.110%
20	15.586	2134	2142	2152	rBV	662867	925149	26.16%	2.599%
21	16.968	2371	2377	2385	rVB	1008843	1420819	40.17%	3.992%
22	17.062	2387	2393	2408	rVV	1911818	2897959	81.93%	8.142%
23	17.874	2525	2531	2541	rBV2	209552	359818	10.17%	1.011%
24	19.015	2720	2725	2729	rBV4	36150	55819	1.58%	0.157%
25	19.162	2744	2750	2763	rBV3	142339	263704	7.46%	0.741%
26	19.368	2778	2785	2794	rBV	2395425	3397203	96.04%	9.544%
27	20.321	2943	2947	2951	rVB6	24361	35689	1.01%	0.100%
28	20.892	3040	3044	3051	rBV4	187361	292083	8.26%	0.821%
29	21.174	3087	3092	3101	rBV	1227217	1754479	49.60%	4.929%
30	23.215	3432	3439	3449	rBV2	1946380	3537160	100.00%	9.938%
31	23.350	3456	3462	3475	rVB	871537	1713879	48.45%	4.815%

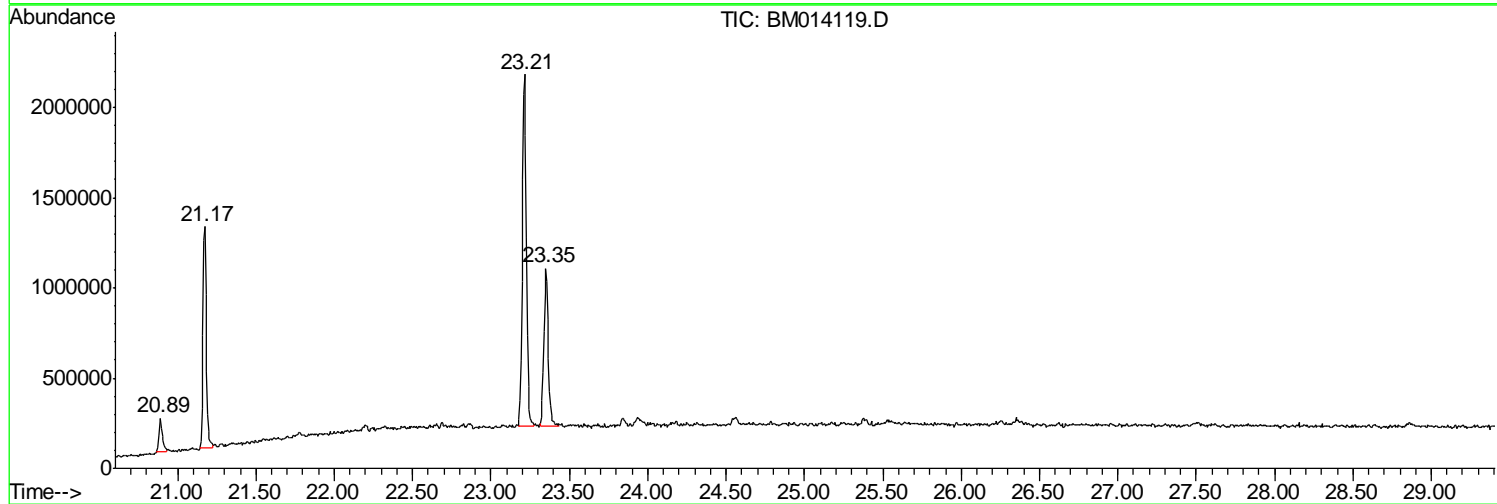
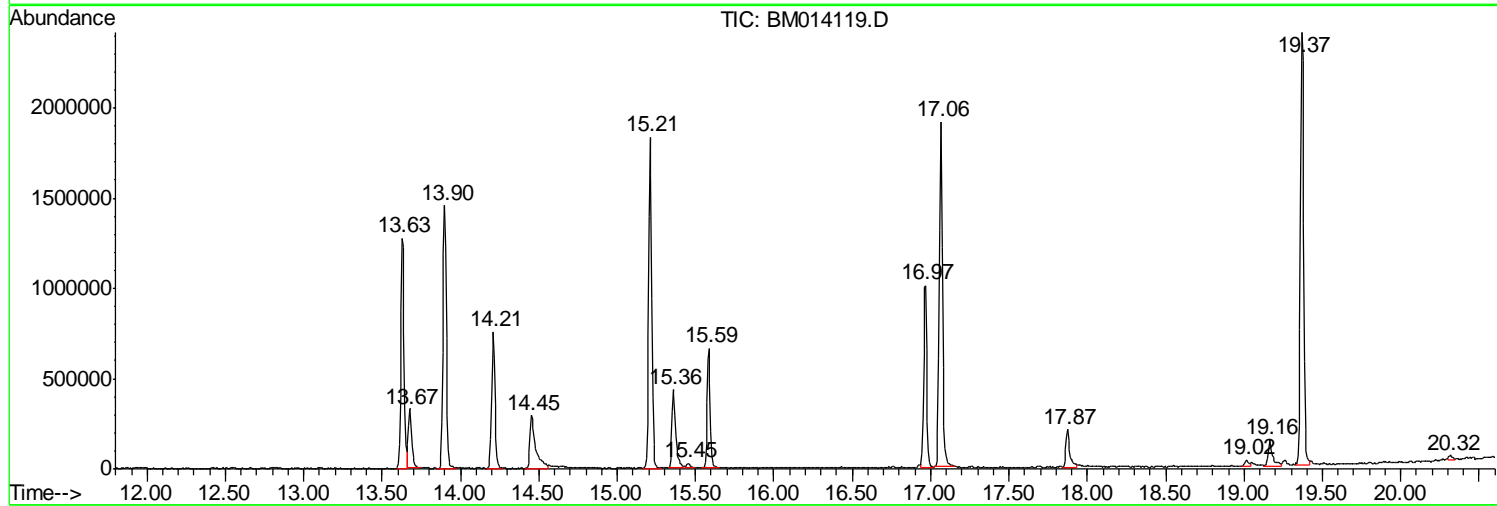
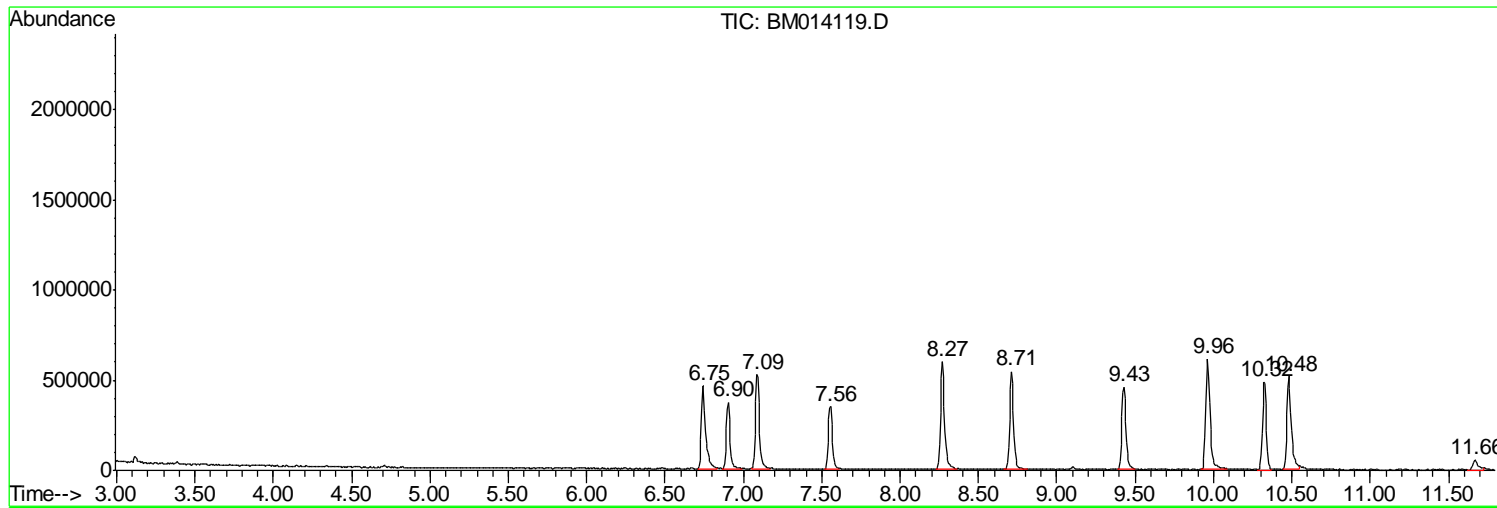
Sum of corrected areas: 35593989

Data Path : U:\HPCHEM1\BNA M\DATA\BM020218\  
 Data File : BM014119.D  
 Acq On : 02 Feb 2018 18:35  
 Operator : SJ/JU  
 Sample : J1355-05  
 Misc :  
 ALS Vial : 14 Sample Multiplier: 1

Instrument :  
 BNA\_M  
 ClientSampleId :  
 F6D30

Quant Method : Z:\HPCHEM1\BNA M\METHODS\SOM-EPA-BM013118.M  
 Quant Title : SVOA CALIBRATION

TIC Library : C:\DATABASE\NIST11.L  
 TIC Integration Parameters: LSCINT.P



Data Path : U:\HPCHEM1\BNA M\DATA\BM020218\  
 Data File : BM014119.D  
 Acq On : 02 Feb 2018 18:35  
 Operator : SJ/JU  
 Sample : J1355-05  
 Misc :  
 ALS Vial : 14 Sample Multiplier: 1

Instrument :  
 BNA\_M  
 ClientSampled :  
 F6D30

Quant Method : Z:\HPCHEM1\BNA M\METHODS\SOM-EPA-BM013118.M  
 Quant Title : SVOA CALIBRATION

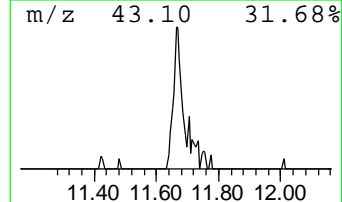
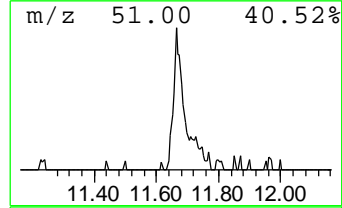
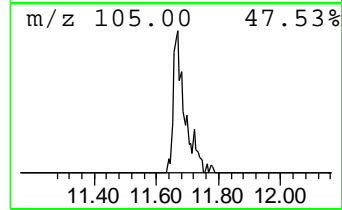
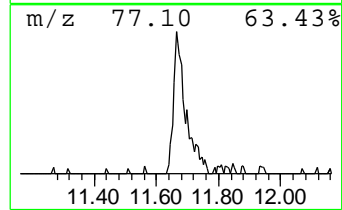
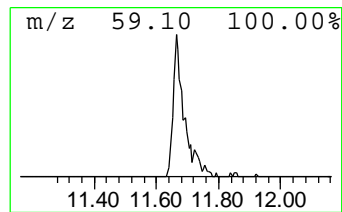
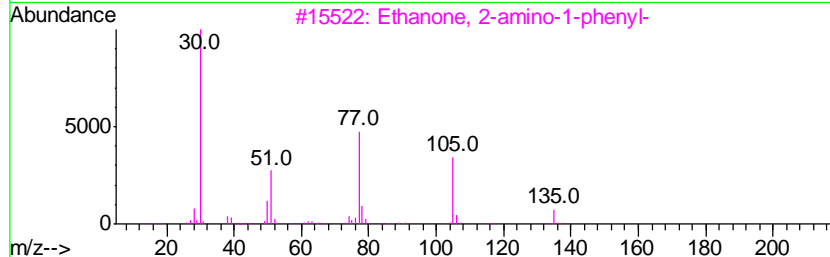
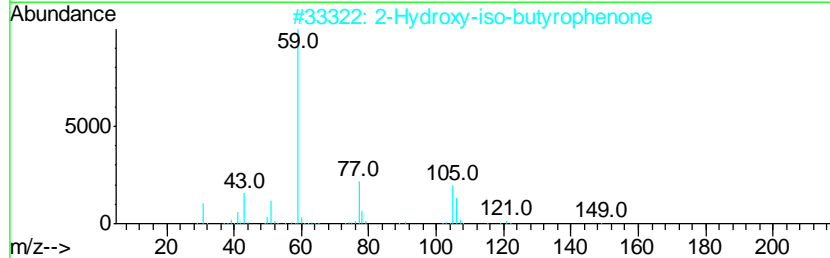
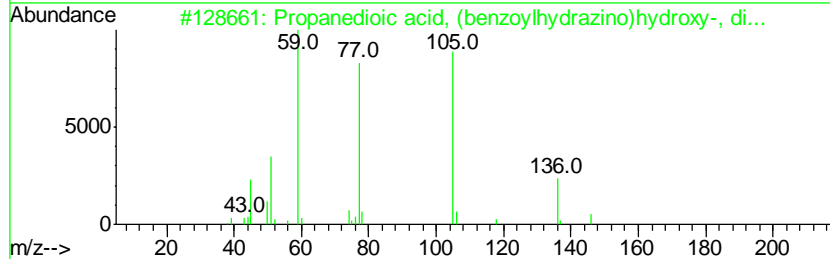
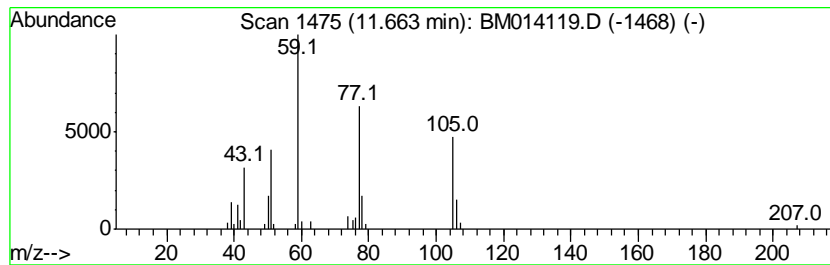
TIC Library : C:\DATABASE\NIST11.L  
 TIC Integration Parameters: LSCINT.P

\*\*\*\*\*  
 Peak Number 1 Propanedioic acid, (benzoyl... Concentration Rank 4

R.T.	EstConc	Area	Relative to ISTD	R.T.
11.66	3.23 ng/ul	135961	Naphthalene-d8	10.32

Hit#	of	Tentative ID	MW	MolForm	CAS#	Qual
1	5	Propanedioic acid, (benzoylhydra...	282	C12H14N2O6	1000142-99-9	78
2		2-Hydroxy-iso-butyrophenone	164	C10H12O2	007473-98-5	45
3		Ethanone, 2-amino-1-phenyl-	135	C8H9NO	000613-89-8	43
4		3-Isoxazolecarboxylic acid, 4...	263	C14H17NO4	035145-84-7	40
5		N-Benzoyl-d-threo-O-methylthreonine	237	C12H15NO4	131644-54-7	39



Data Path : U:\HPCHEM1\BNA M\DATA\BM020218\  
 Data File : BM014119.D  
 Acq On : 02 Feb 2018 18:35  
 Operator : SJ/JU  
 Sample : J1355-05  
 Misc :  
 ALS Vial : 14 Sample Multiplier: 1

Instrument :  
 BNA\_M  
 ClientSampleID :  
 F6D30

Quant Method : Z:\HPCHEM1\BNA M\METHODS\SOM-EPA-BM013118.M  
 Quant Title : SVOA CALIBRATION

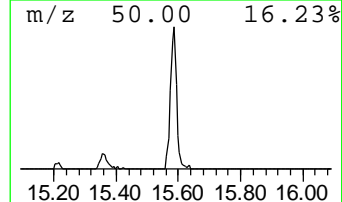
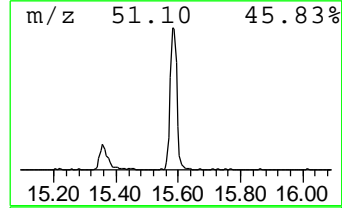
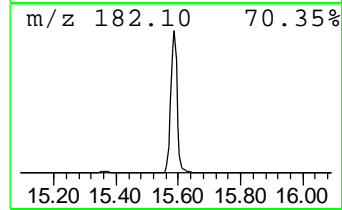
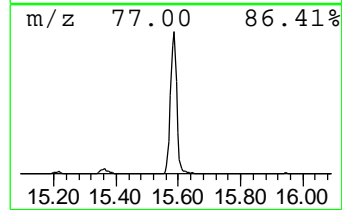
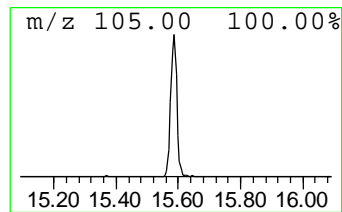
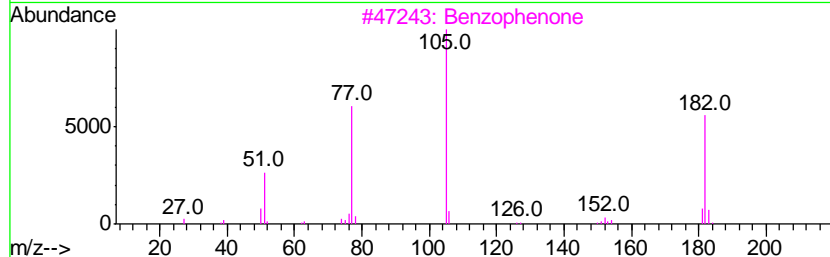
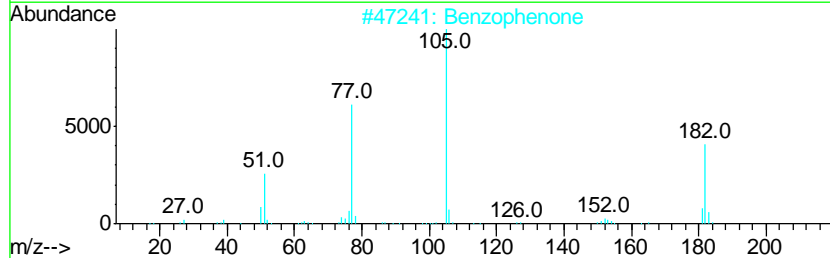
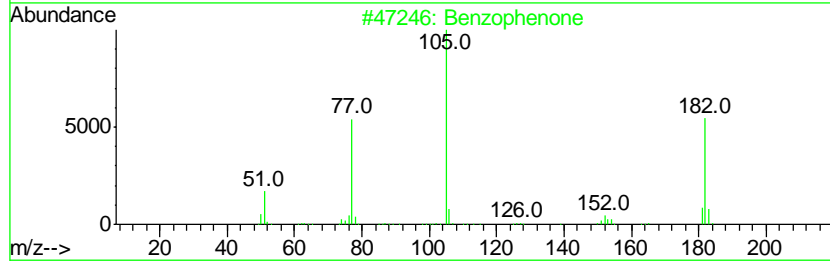
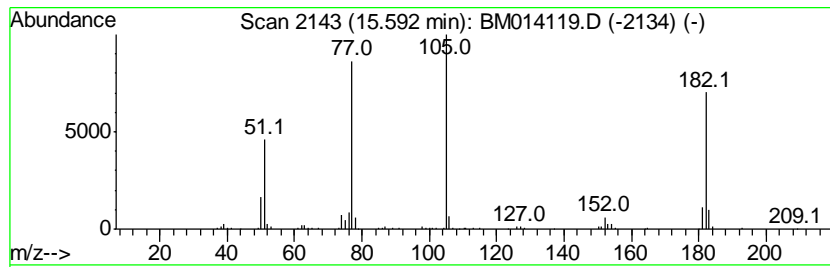
TIC Library : C:\DATABASE\NIST11.L  
 TIC Integration Parameters: LSCINT.P

\*\*\*\*\*  
 Peak Number 2 Benzophenone Concentration Rank 1

R.T.	EstConc	Area	Relative to ISTD	R.T.
15.59	15.93 ng/ul	925149	Acenaphthene-d10	14.21

Hit#	of	Tentative ID	MW	MolForm	CAS#	Qual
1	5	Benzophenone	182	C13H10O	000119-61-9	95
2		Benzophenone	182	C13H10O	000119-61-9	94
3		Benzophenone	182	C13H10O	000119-61-9	91
4		Benzophenone	182	C13H10O	000119-61-9	91
5		Benzophenone	182	C13H10O	000119-61-9	90



Data Path : U:\HPCHEM1\BNA M\DATA\BM020218\  
 Data File : BM014119.D  
 Acq On : 02 Feb 2018 18:35  
 Operator : SJ/JU  
 Sample : J1355-05  
 Misc :  
 ALS Vial : 14 Sample Multiplier: 1

Instrument :  
 BNA\_M  
 ClientSampleId :  
 F6D30

Quant Method : Z:\HPCHEM1\BNA M\METHODS\SOM-EPA-BM013118.M  
 Quant Title : SVOA CALIBRATION

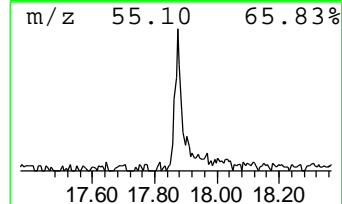
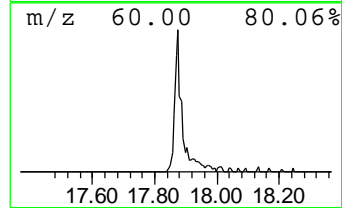
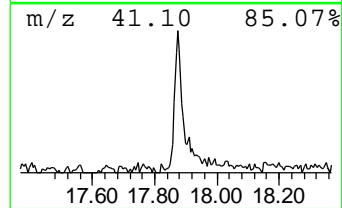
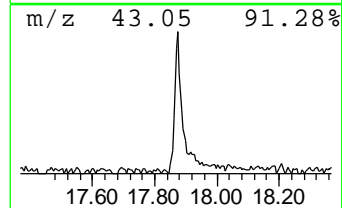
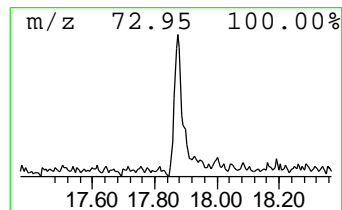
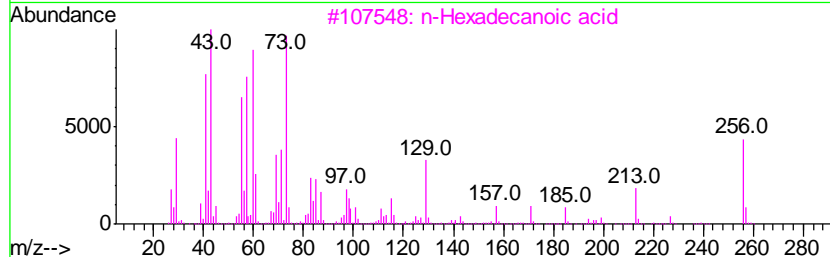
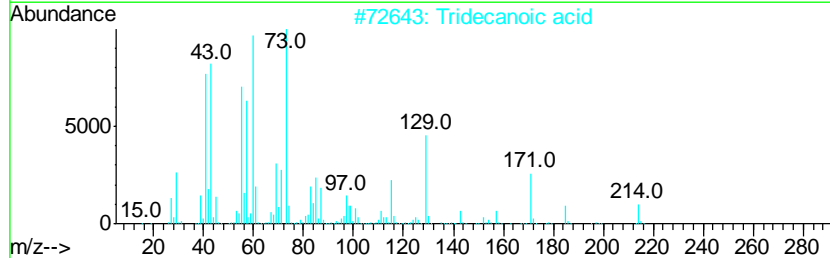
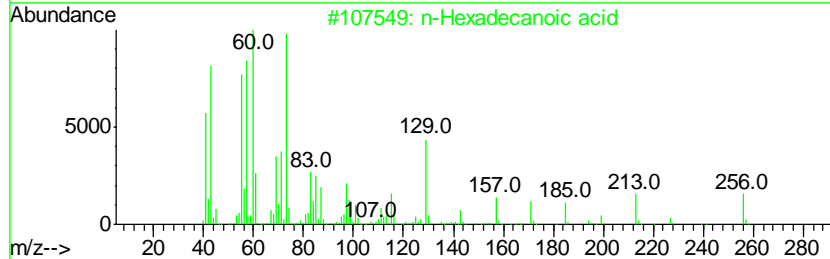
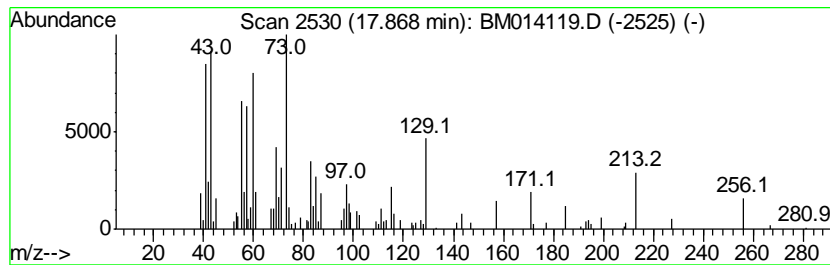
TIC Library : C:\DATABASE\NIST11.L  
 TIC Integration Parameters: LSCINT.P

\*\*\*\*\*  
 Peak Number 3 n-Hexadecanoic acid Concentration Rank 2

R.T.	EstConc	Area	Relative to ISTD	R.T.
17.87	5.06 ng/ul	359818	Phenanthrene-d10	16.97

Hit#	of	Tentative ID	MW	MolForm	CAS#	Qual
1	5	n-Hexadecanoic acid	256	C16H32O2	000057-10-3	96
2		Tridecanoic acid	214	C13H26O2	000638-53-9	96
3		n-Hexadecanoic acid	256	C16H32O2	000057-10-3	94
4		Tridecanoic acid	214	C13H26O2	000638-53-9	94
5		Pentadecanoic acid	242	C15H30O2	001002-84-2	76



Data Path : U:\HPCHEM1\BNA M\DATA\BM020218\  
 Data File : BM014119.D  
 Acq On : 02 Feb 2018 18:35  
 Operator : SJ/JU  
 Sample : J1355-05  
 Misc :  
 ALS Vial : 14 Sample Multiplier: 1

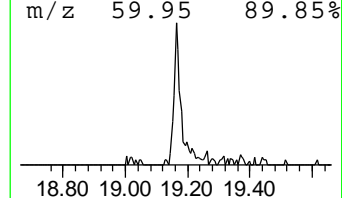
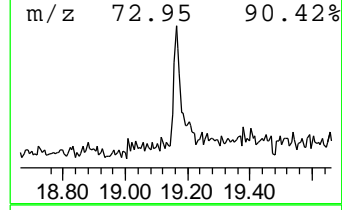
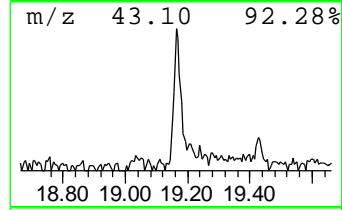
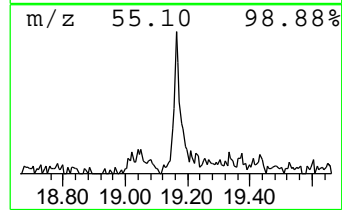
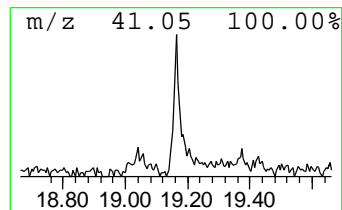
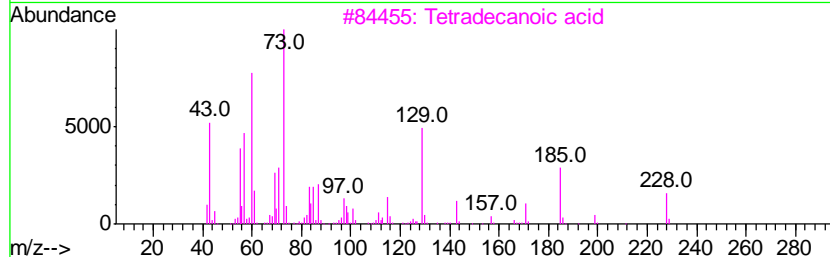
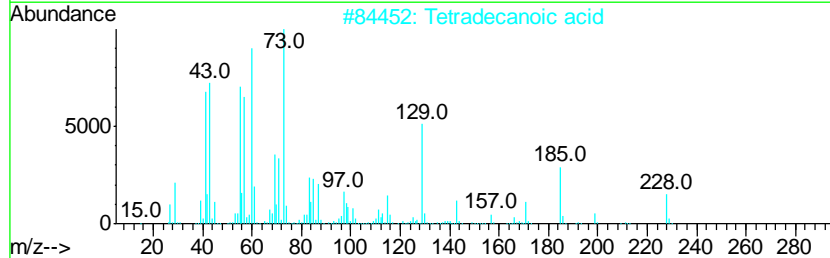
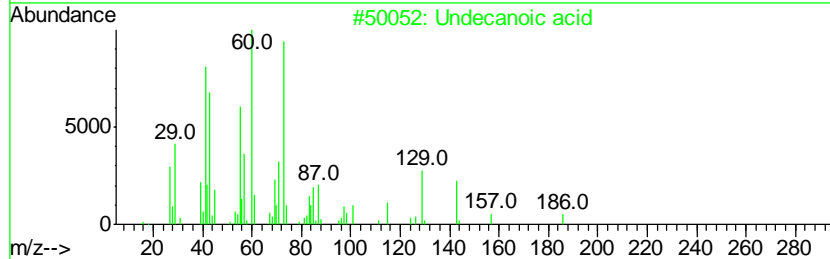
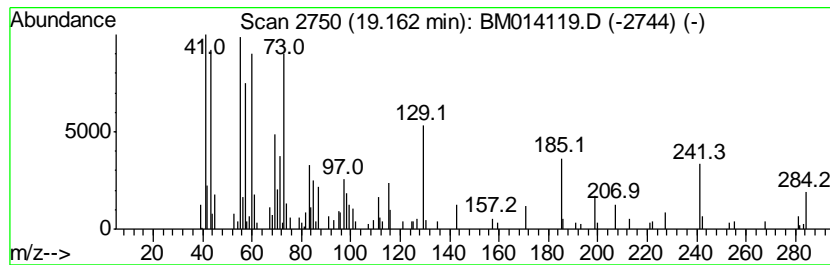
Instrument :  
 BNA\_M  
 ClientSampleId :  
 F6D30

Quant Method : Z:\HPCHEM1\BNA M\METHODS\SOM-EPA-BM013118.M  
 Quant Title : SVOA CALIBRATION

TIC Library : C:\DATABASE\NIST11.L  
 TIC Integration Parameters: LSCINT.P

\*\*\*\*\*  
 Peak Number 4 Undecanoic acid Concentration Rank 5

R.T.	EstConc	Area	Relative to ISTD	R.T.
19.16	3.01 ng/ul	263704	Chrysene-d12	21.17
Hit# of	5	Tentative ID	MW MolForm	CAS# Qual
1		Undecanoic acid	186 C11H22O2	000112-37-8 83
2		Tetradecanoic acid	228 C14H28O2	000544-63-8 81
3		Tetradecanoic acid	228 C14H28O2	000544-63-8 81
4		n-Hexadecanoic acid	256 C16H32O2	000057-10-3 81
5		Octadecanoic acid	284 C18H36O2	000057-11-4 78



Data Path : U:\HPCHEM1\BNA M\DATA\BM020218\  
 Data File : BM014119.D  
 Acq On : 02 Feb 2018 18:35  
 Operator : SJ/JU  
 Sample : J1355-05  
 Misc :  
 ALS Vial : 14 Sample Multiplier: 1

Instrument :  
 BNA\_M  
 ClientSampled :  
 F6D30

Quant Method : Z:\HPCHEM1\BNA M\METHODS\SOM-EPA-BM013118.M  
 Quant Title : SVOA CALIBRATION

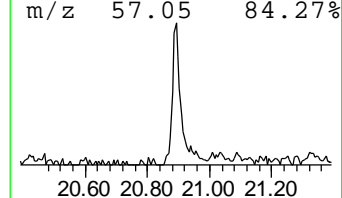
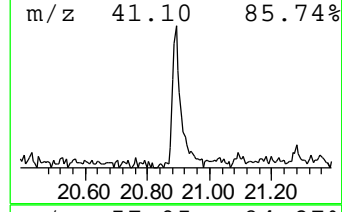
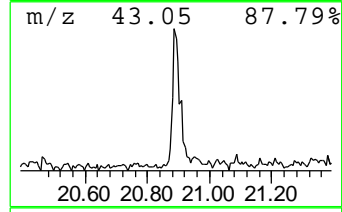
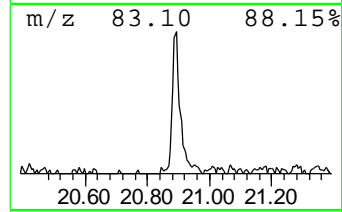
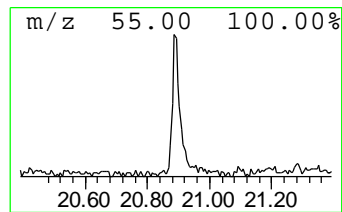
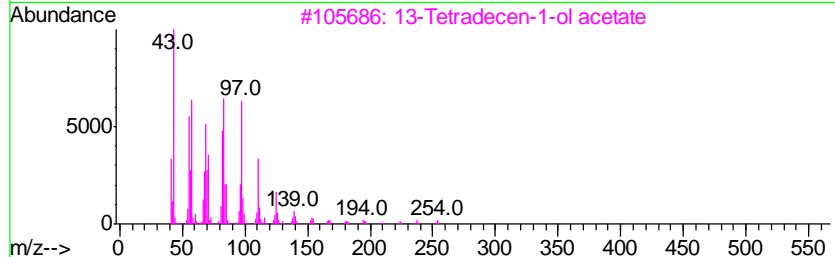
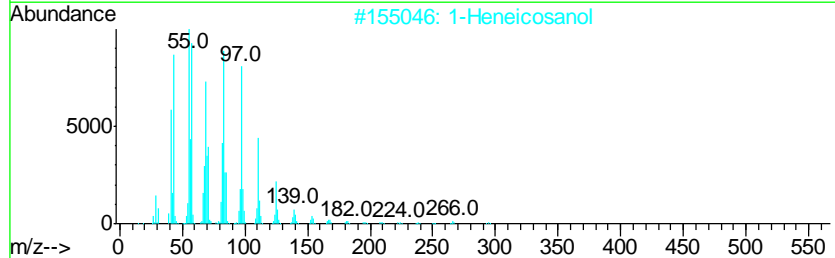
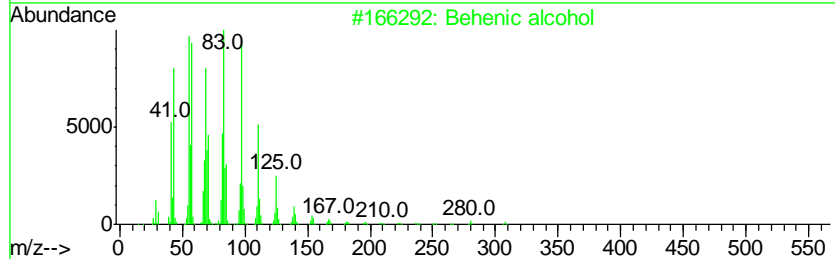
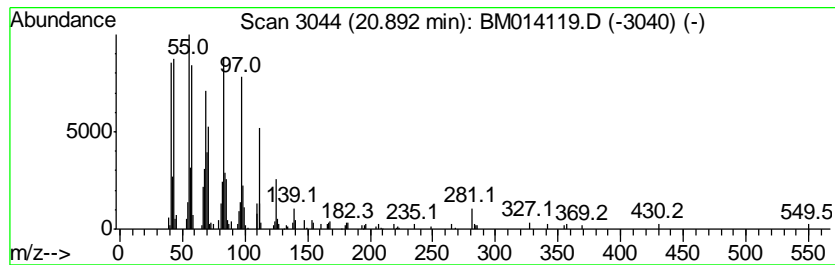
TIC Library : C:\DATABASE\NIST11.L  
 TIC Integration Parameters: LSCINT.P

\*\*\*\*\*  
 Peak Number 5 Behenic alcohol Concentration Rank 3

R.T.	EstConc	Area	Relative to ISTD	R.T.
20.89	3.33 ng/ul	292083	Chrysene-d12	21.17

Hit#	of	Tentative ID	MW	MolForm	CAS#	Qual
1	5	Behenic alcohol	326	C22H46O	000661-19-8	94
2		1-Heneicosanol	312	C21H44O	015594-90-8	91
3		13-Tetradecen-1-ol acetate	254	C16H30O2	056221-91-1	91
4		n-Tetracosanol-1	354	C24H50O	000506-51-4	90
5		1-Heptacosanol	396	C27H56O	002004-39-9	87



Data Path : U:\HPCHEM1\BNA\_M\DATA\BM020218\  
Data File : BM014119.D  
Acq On : 02 Feb 2018 18:35  
Operator : SJ/JU  
Sample : J1355-05  
Misc :  
ALS Vial : 14 Sample Multiplier: 1

Instrument :  
BNA\_M  
ClientSampleId :  
F6D30

Quant Method : Z:\HPCHEM1\BNA\_M\METHODS\SOM-EPA-BM013118.M  
Quant Title : SVOA CALIBRATION

TIC Library : C:\DATABASE\NIST11.L  
TIC Integration Parameters: LSCINT.P

TIC Top Hit name	RT	EstConc	Units	Response	--Internal Standard--			
					#	RT	Resp	Conc
Propanedioic acid...	11.66	3.2	ng/ul	135961	2	10.32	840730	20.0
Benzophenone	15.59	15.9	ng/ul	925149	3	14.21	1161530	20.0
n-Hexadecanoic acid	17.87	5.1	ng/ul	359818	4	16.97	1420820	20.0
Undecanoic acid	19.16	3.0	ng/ul	263704	5	21.17	1754480	20.0
Behenic alcohol	20.89	3.3	ng/ul	292083	5	21.17	1754480	20.0