

Data Path : Z:\svoasrv\HPCHEM1\BNA_M\Data\BM020221\
 Data File : BM028634.D
 Acq On : 02 Feb 2021 22:12
 Operator : CG/JU
 Sample : M1286-19
 Misc :
 ALS Vial : 15 Sample Multiplier: 1

Instrument :
 BNA_M
 ClientSampleId :
 JJ_BH_03_2-4

Quant Time: Feb 02 23:43:18 2021
 Quant Method : Z:\svoasrv\HPCHEM1\BNA_M\Methods\8270-BM012021.M
 Quant Title : ASP BNA STANDARDS FOR 5 POINT CALIBRATION
 QLast Update : Fri Jan 29 16:19:07 2021
 Response via : Initial Calibration

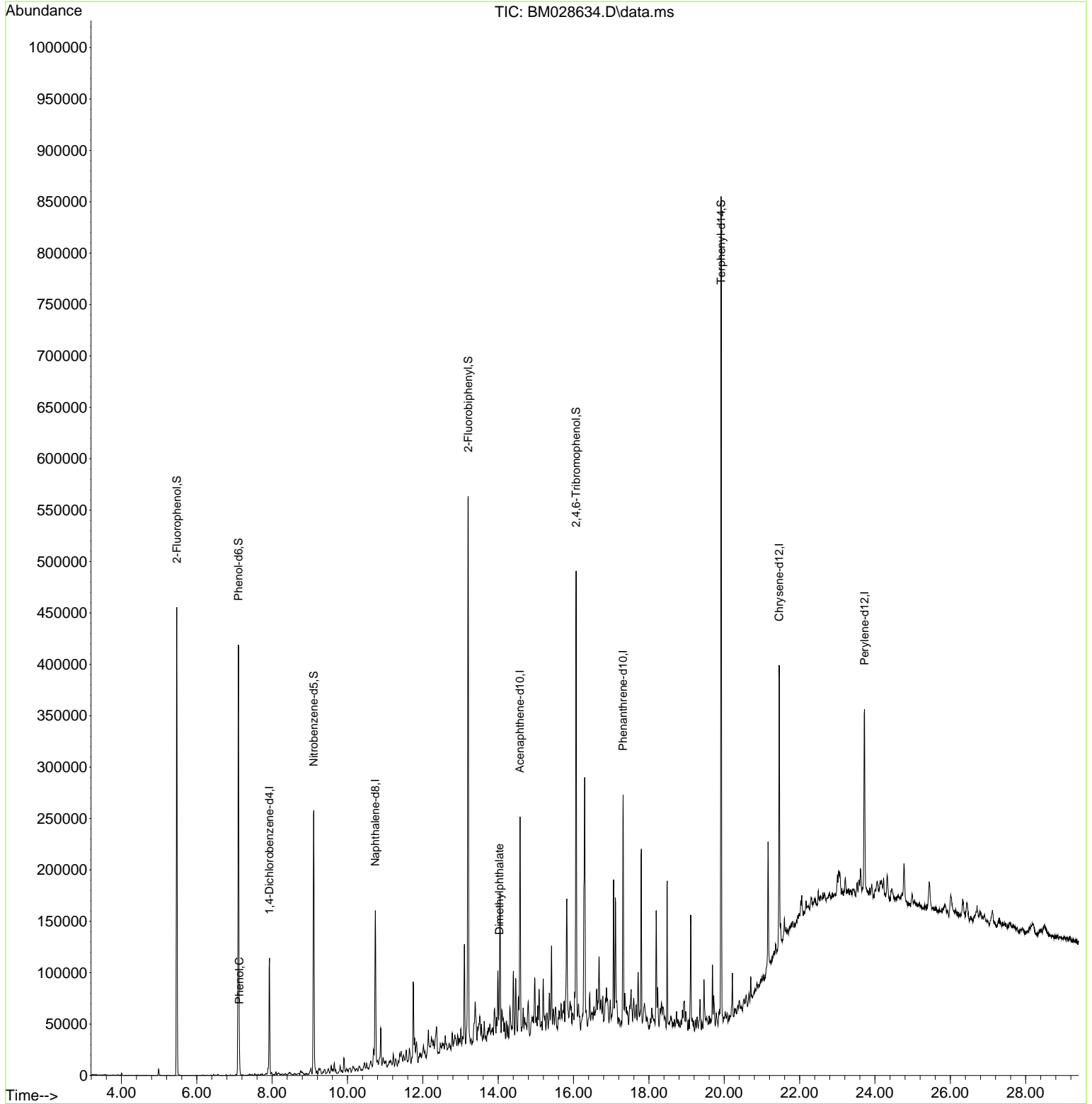
Compound	R.T.	QIon	Response	Conc	Units	Dev(Min)	
Internal Standards							
1) 1,4-Dichlorobenzene-d4	7.928	152	30743	20.00	ng	0.00	
21) Naphthalene-d8	10.739	136	115619	20.00	ng	# 0.00	
39) Acenaphthene-d10	14.580	164	61795	20.00	ng	0.00	
64) Phenanthrene-d10	17.315	188	118990	20.00	ng	# 0.00	
76) Chrysene-d12	21.456	240	116923	20.00	ng	#-0.01	
86) Perylene-d12	23.721	264	120636	20.00	ng	0.00	
System Monitoring Compounds							
5) 2-Fluorophenol	5.469	112	185193	95.16	ng	-0.01	
7) Phenol-d6	7.104	99	227620	85.90	ng	-0.02	
23) Nitrobenzene-d5	9.104	82	139859	57.37	ng	0.00	
42) 2,4,6-Tribromophenol	16.068	330	73977	90.35	ng	0.00	
45) 2-Fluorobiphenyl	13.204	172	278736	56.59	ng	0.00	
79) Terphenyl-d14	19.915	244	325538	50.28	ng	0.00	
Target Compounds							Qvalue
10) Phenol	7.134	94	8272	3.31	ng		86
50) Dimethylphthalate	14.033	163	11315	2.23	ng		98

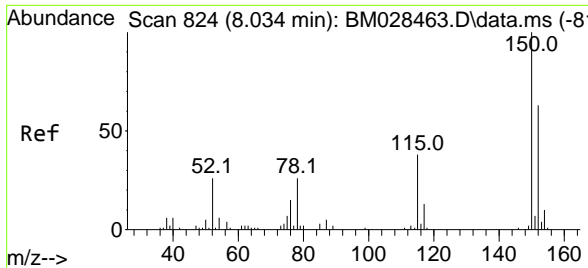
(#) = qualifier out of range (m) = manual integration (+) = signals summed

Data Path : Z:\svoasrv\HPCHEM1\BNA_M\Data\BM020221\
 Data File : BM028634.D
 Acq On : 02 Feb 2021 22:12
 Operator : CG/JU
 Sample : M1286-19
 Misc :
 ALS Vial : 15 Sample Multiplier: 1

Instrument :
 BNA_M
ClientSampleId :
 JJ_BH_03_2-4

Quant Time: Feb 02 23:43:18 2021
 Quant Method : Z:\svoasrv\HPCHEM1\BNA_M\Methods\8270-BM012021.M
 Quant Title : ASP BNA STANDARDS FOR 5 POINT CALIBRATION
 QLast Update : Fri Jan 29 16:19:07 2021
 Response via : Initial Calibration

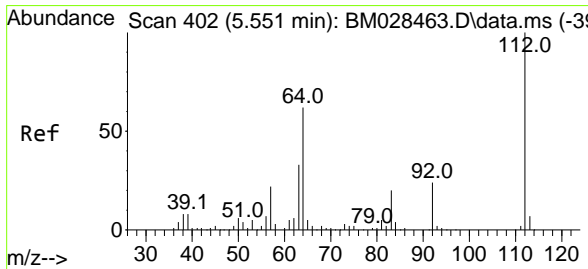
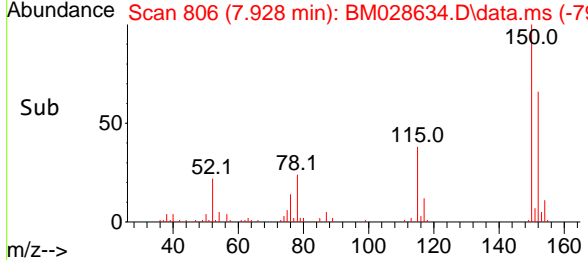
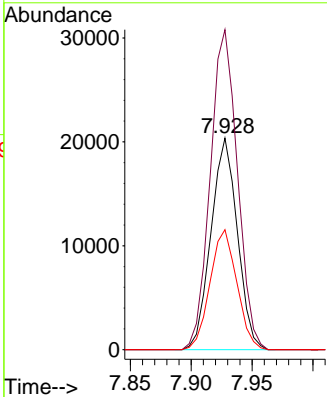
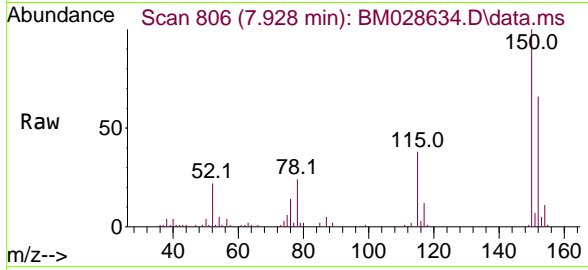




#1
 1,4-Dichlorobenzene-d4
 Concen: 20.00 ng
 RT: 7.928 min Scan# 806
 Delta R.T. -0.006 min
 Lab File: BM028634.D
 Acq: 02 Feb 2021 22:12

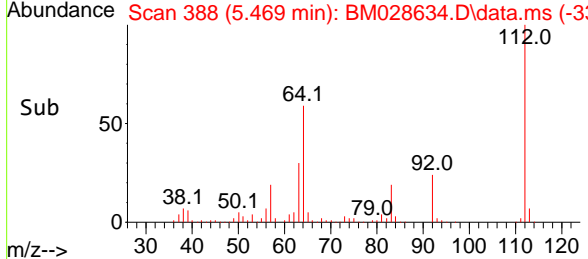
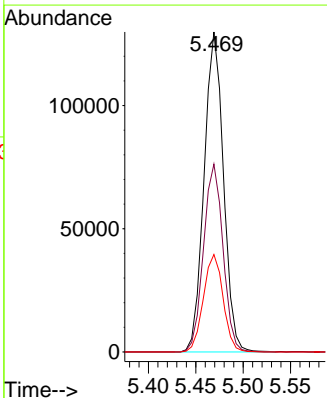
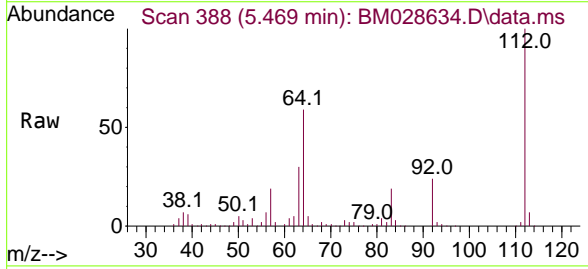
Instrument :
 BNA_M
 ClientSampled :
 JJ_BH_03_2-4

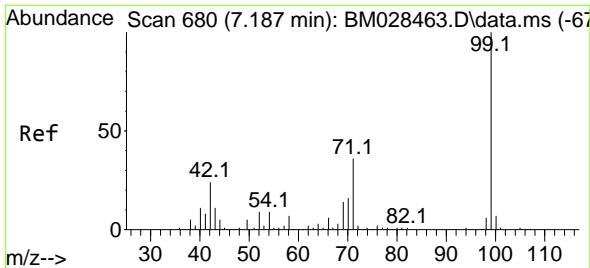
Tgt Ion:152 Resp: 30743
 Ion Ratio Lower Upper
 152 100
 150 151.3 120.6 181.0
 115 56.7 47.2 70.8



#5
 2-Fluorophenol
 Concen: 95.16 ng
 RT: 5.469 min Scan# 388
 Delta R.T. -0.012 min
 Lab File: BM028634.D
 Acq: 02 Feb 2021 22:12

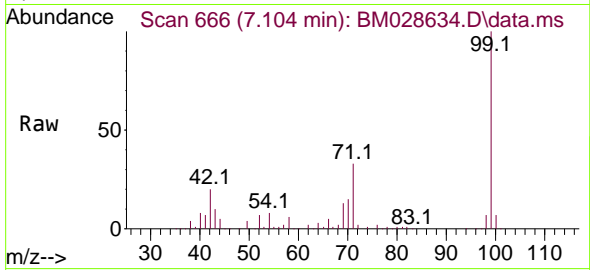
Tgt Ion:112 Resp: 185193
 Ion Ratio Lower Upper
 112 100
 64 58.7 50.6 76.0
 63 30.4 31.0 46.6#



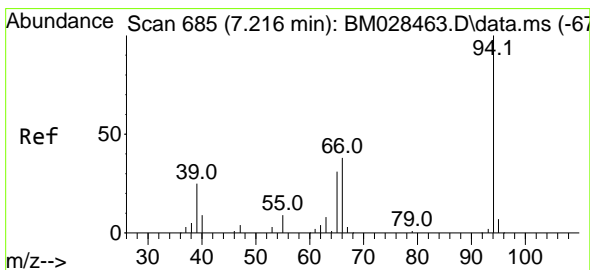
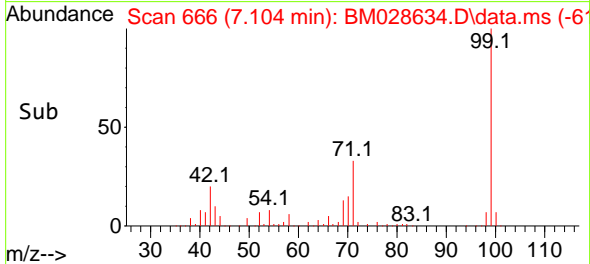
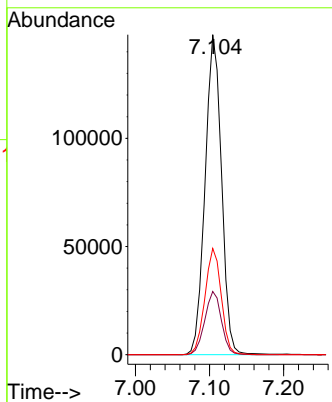


#7
 Phenol-d6
 Concen: 85.90 ng
 RT: 7.104 min Scan# 666
 Delta R.T. -0.018 min
 Lab File: BM028634.D
 Acq: 02 Feb 2021 22:12

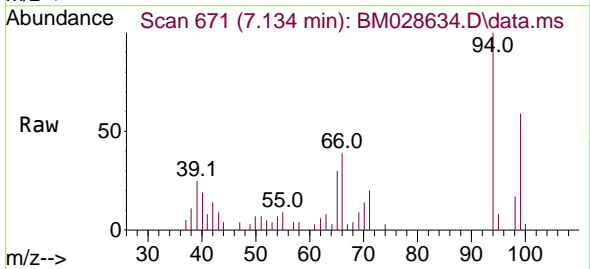
Instrument :
 BNA_M
 ClientSampleId :
 JJ_BH_03_2-4



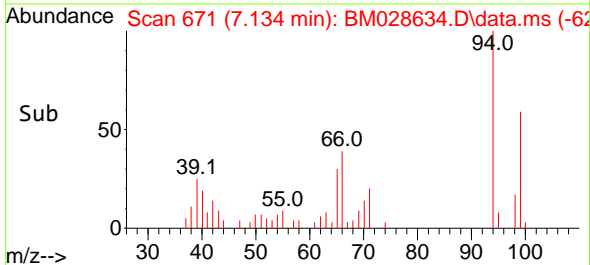
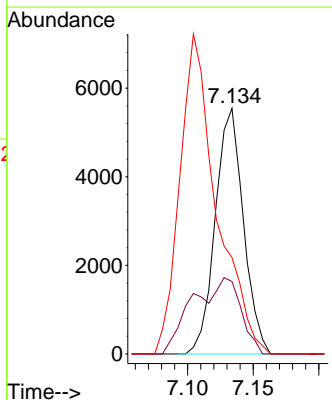
Tgt Ion	Resp	Lower	Upper
99	100		
42	19.8	13.5	20.3
71	33.2	39.4	59.0

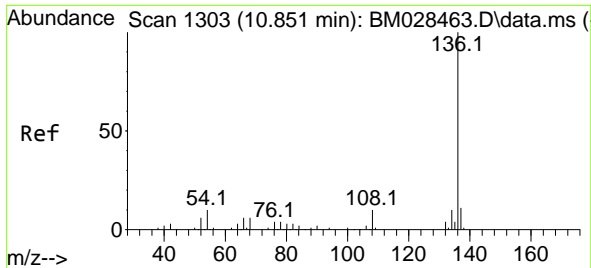


#10
 Phenol
 Concen: 3.31 ng
 RT: 7.134 min Scan# 671
 Delta R.T. -0.012 min
 Lab File: BM028634.D
 Acq: 02 Feb 2021 22:12



Tgt Ion	Resp	Lower	Upper
94	100		
65	29.5	16.4	56.4
66	39.3	30.2	70.2

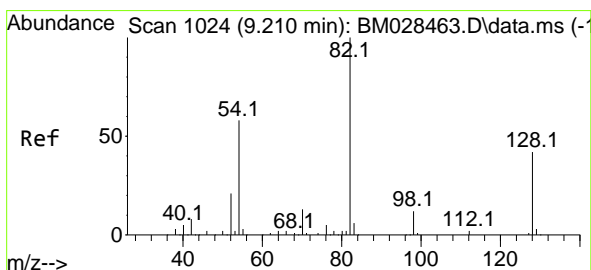
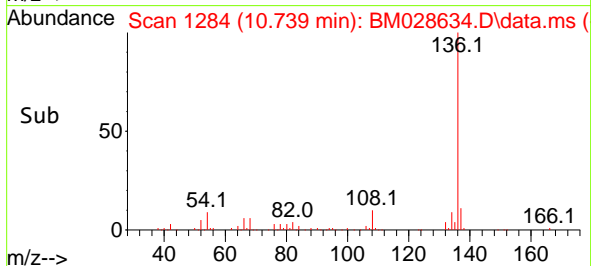
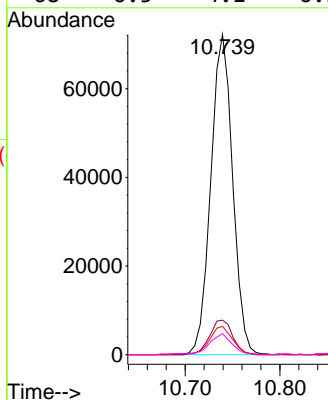
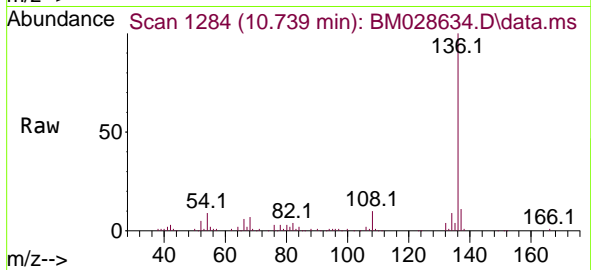




#21
 Naphthalene-d8
 Concen: 20.00 ng
 RT: 10.739 min Scan# 1284
 Delta R.T. -0.006 min
 Lab File: BM028634.D
 Acq: 02 Feb 2021 22:12

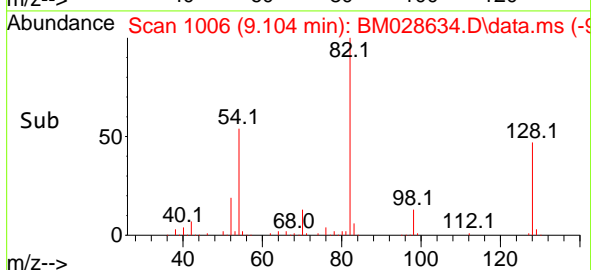
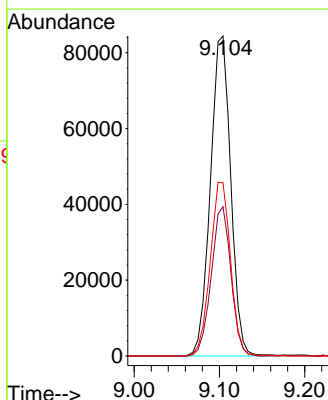
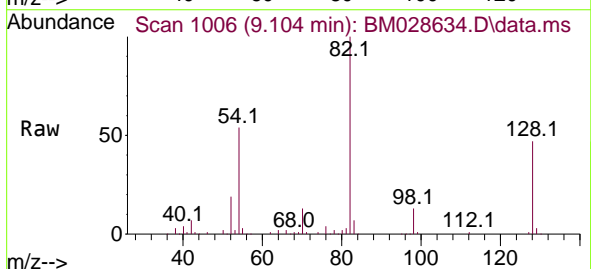
Instrument :
 BNA_M
 ClientSampleId :
 JJ_BH_03_2-4

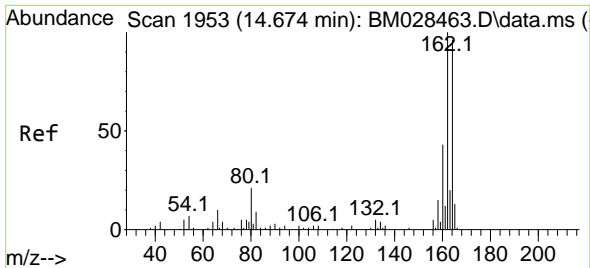
Tgt Ion	Resp	Lower	Upper
136	115619		
136	100		
137	10.8	8.6	12.8
54	8.8	4.6	7.0#
68	6.5	4.1	6.1#



#23
 Nitrobenzene-d5
 Concen: 57.37 ng
 RT: 9.104 min Scan# 1006
 Delta R.T. -0.006 min
 Lab File: BM028634.D
 Acq: 02 Feb 2021 22:12

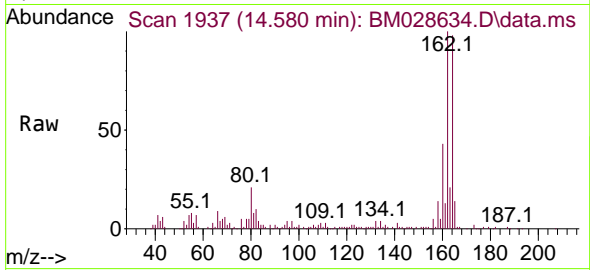
Tgt Ion	Resp	Lower	Upper
82	139859		
82	100		
128	46.7	27.4	41.0#
54	54.1	31.4	47.0#



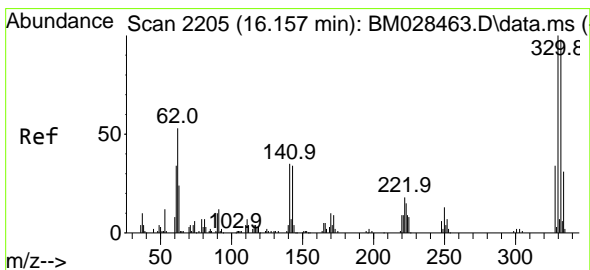
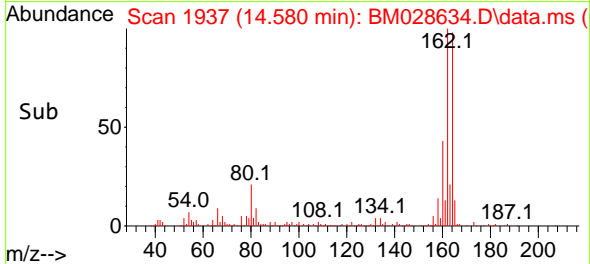
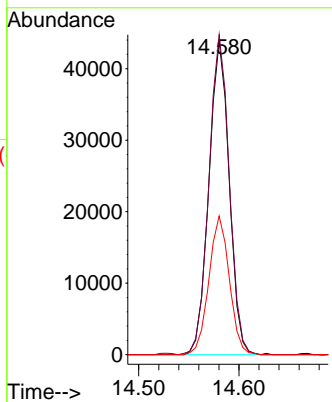


#39
 Acenaphthene-d10
 Concen: 20.00 ng
 RT: 14.580 min Scan# 1937
 Delta R.T. -0.006 min
 Lab File: BM028634.D
 Acq: 02 Feb 2021 22:12

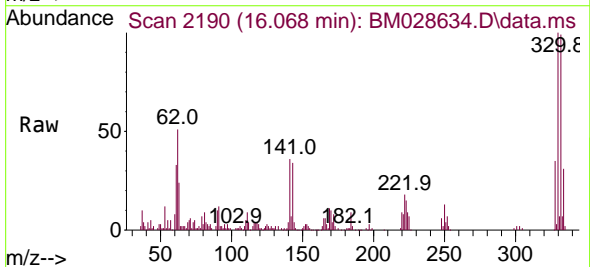
Instrument :
 BNA_M
 ClientSampleId :
 JJ_BH_03_2-4



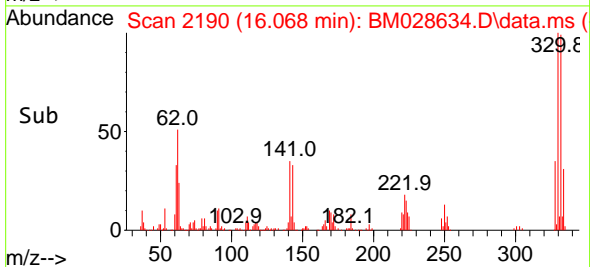
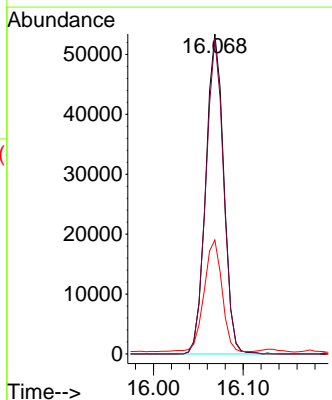
Tgt Ion:164 Resp: 61795
 Ion Ratio Lower Upper
 164 100
 162 102.0 80.4 120.6
 160 44.2 35.9 53.9

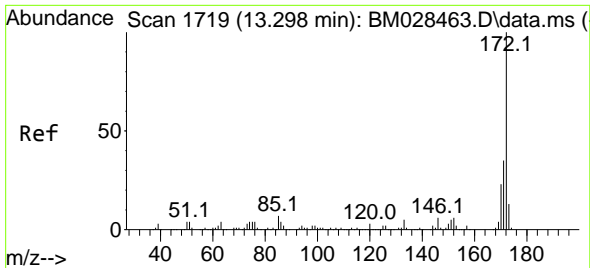


#42
 2,4,6-Tribromophenol
 Concen: 90.35 ng
 RT: 16.068 min Scan# 2190
 Delta R.T. -0.006 min
 Lab File: BM028634.D
 Acq: 02 Feb 2021 22:12



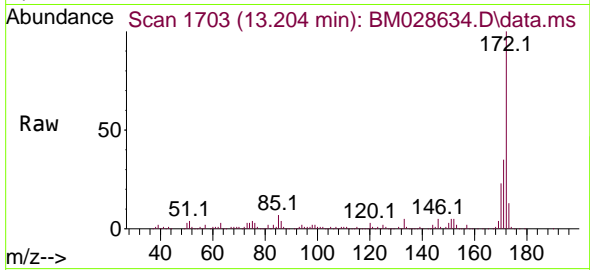
Tgt Ion:330 Resp: 73977
 Ion Ratio Lower Upper
 330 100
 332 97.3 77.8 116.8
 141 35.0 28.4 42.6





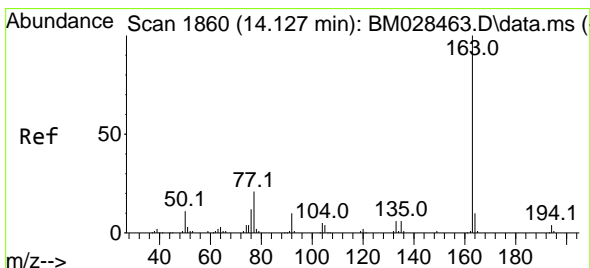
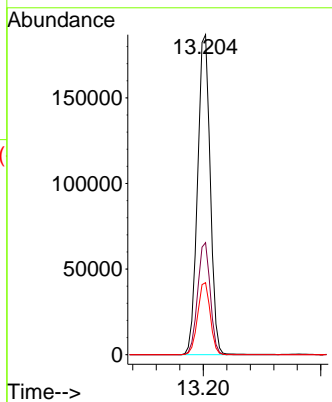
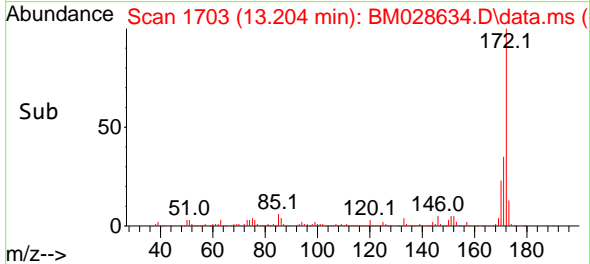
#45
 2-Fluorobiphenyl
 Concen: 56.59 ng
 RT: 13.204 min Scan# 1703
 Delta R.T. -0.006 min
 Lab File: BM028634.D
 Acq: 02 Feb 2021 22:12

Instrument :
 BNA_M
 ClientSampleId :
 JJ_BH_03_2-4

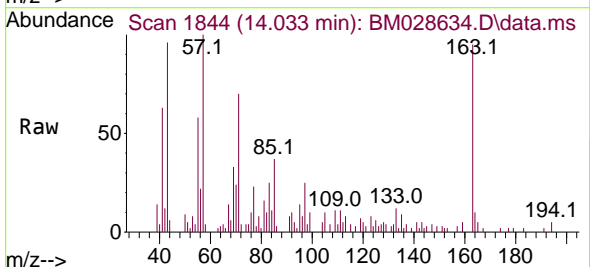


Tgt Ion:172 Resp: 278736

Ion	Ratio	Lower	Upper
172	100		
171	35.0	27.8	41.8
170	22.5	18.6	27.8

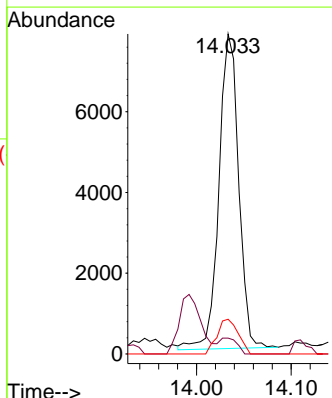
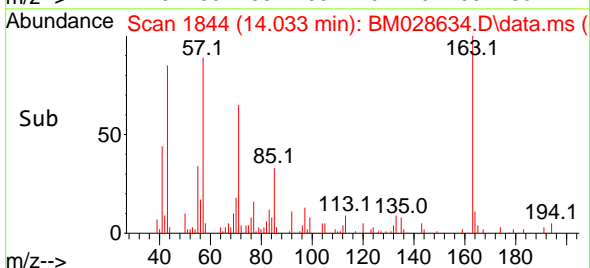


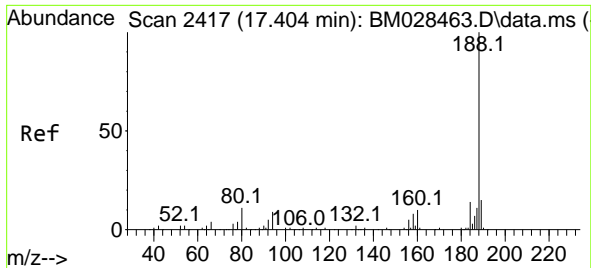
#50
 Dimethylphthalate
 Concen: 2.23 ng
 RT: 14.033 min Scan# 1844
 Delta R.T. -0.018 min
 Lab File: BM028634.D
 Acq: 02 Feb 2021 22:12



Tgt Ion:163 Resp: 11315

Ion	Ratio	Lower	Upper
163	100		
194	5.0	3.4	5.2
164	10.8	8.1	12.1

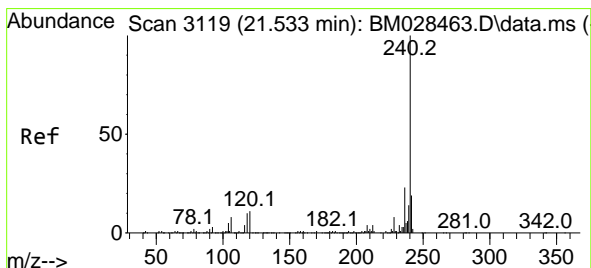
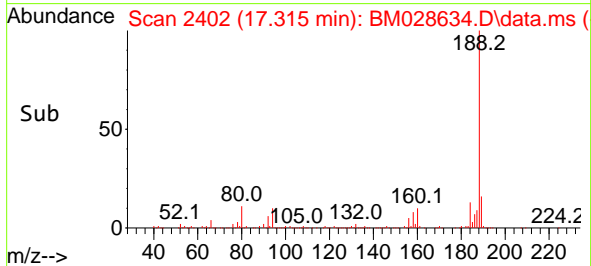
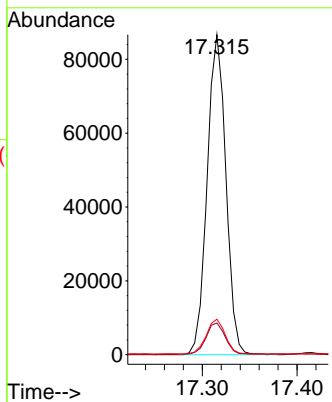
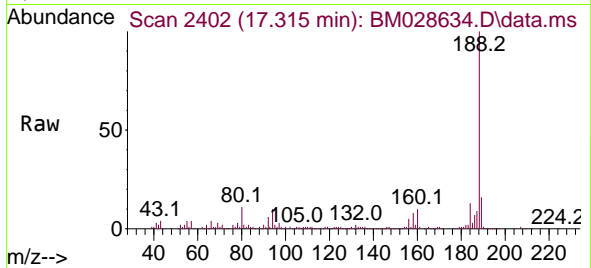




#64
 Phenanthrene-d10
 Concen: 20.00 ng
 RT: 17.315 min Scan# 2402
 Delta R.T. -0.006 min
 Lab File: BM028634.D
 Acq: 02 Feb 2021 22:12

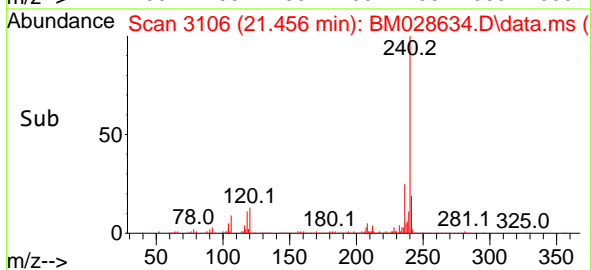
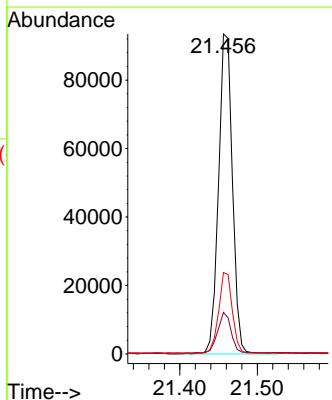
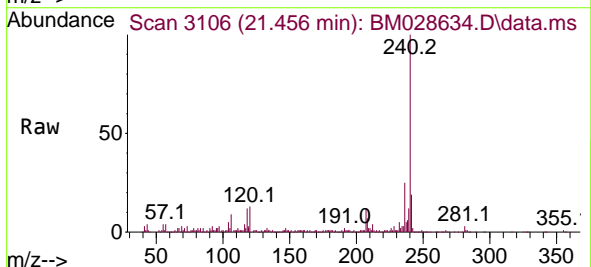
Instrument :
 BNA_M
 ClientSampleId :
 JJ_BH_03_2-4

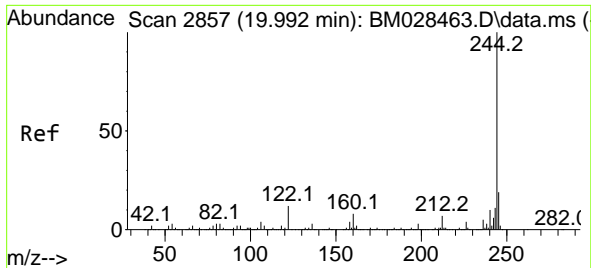
Tgt Ion	Resp	Lower	Upper
188	118990		
94	9.9	6.2	9.4#
80	11.1	7.5	11.3



#76
 Chrysene-d12
 Concen: 20.00 ng
 RT: 21.456 min Scan# 3106
 Delta R.T. -0.012 min
 Lab File: BM028634.D
 Acq: 02 Feb 2021 22:12

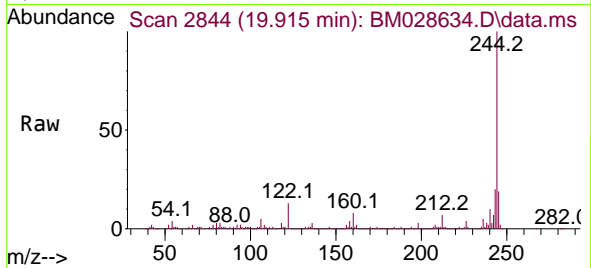
Tgt Ion	Resp	Lower	Upper
240	116923		
120	13.0	6.4	9.6#
236	25.4	20.1	30.1



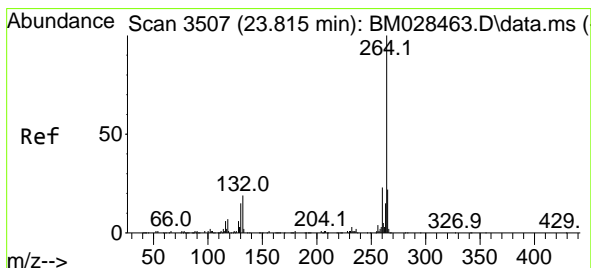
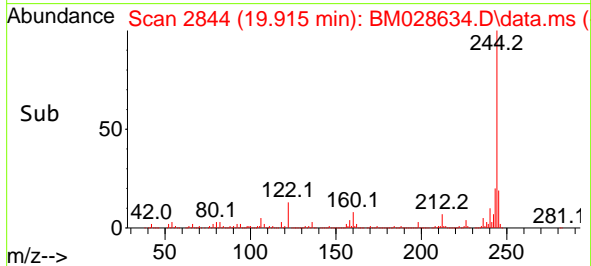
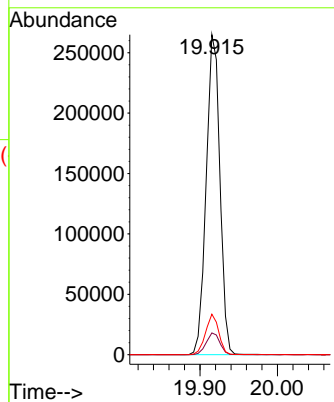


#79
 Terphenyl-d14
 Concen: 50.28 ng
 RT: 19.915 min Scan# 2844
 Delta R.T. -0.006 min
 Lab File: BM028634.D
 Acq: 02 Feb 2021 22:12

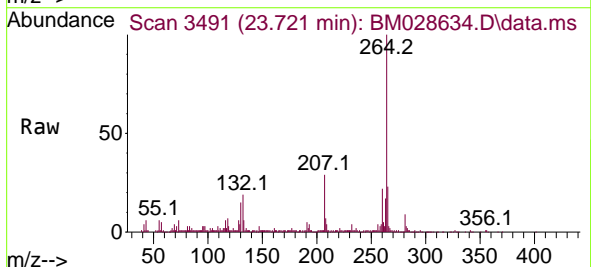
Instrument :
 BNA_M
 ClientSampleId :
 JJ_BH_03_2-4



Tgt Ion:244 Resp: 325538
 Ion Ratio Lower Upper
 244 100
 212 6.8 5.8 8.8
 122 12.7 6.5 9.7#



#86
 Perylene-d12
 Concen: 20.00 ng
 RT: 23.721 min Scan# 3491
 Delta R.T. -0.006 min
 Lab File: BM028634.D
 Acq: 02 Feb 2021 22:12



Tgt Ion:264 Resp: 120636
 Ion Ratio Lower Upper
 264 100
 260 22.1 19.0 28.4
 265 22.7 17.7 26.5

